

NELSON'S MONUMENT, -GT. YARMOUTH.



# POST CARD.

THIS SPACE CAN NOW BE USED FOR  
CORRESPONDENCE IN THE UNITED  
KINGDOM AND MOST FOREIGN COUNTRIES

THE ADDRESS ONLY TO BE  
WRITTEN HERE.

Printed in Germany.

BLISS' SERIES.  
I found a dozen Postals on sporting  
subjects for one penny and a half, and  
shall send them to you gradually. We have  
enjoyed our stay in L. after seeing Edinburgh  
but we have failed in seeing the Cathedrals  
of England. You know we cannot travel fast  
and we feel like resting after trips. But we  
find very much pleasure in L. and can only  
see a small number of the interesting things there





Tower-Bridge, LONDON



# POST CARD.

Printed  
in Holland.

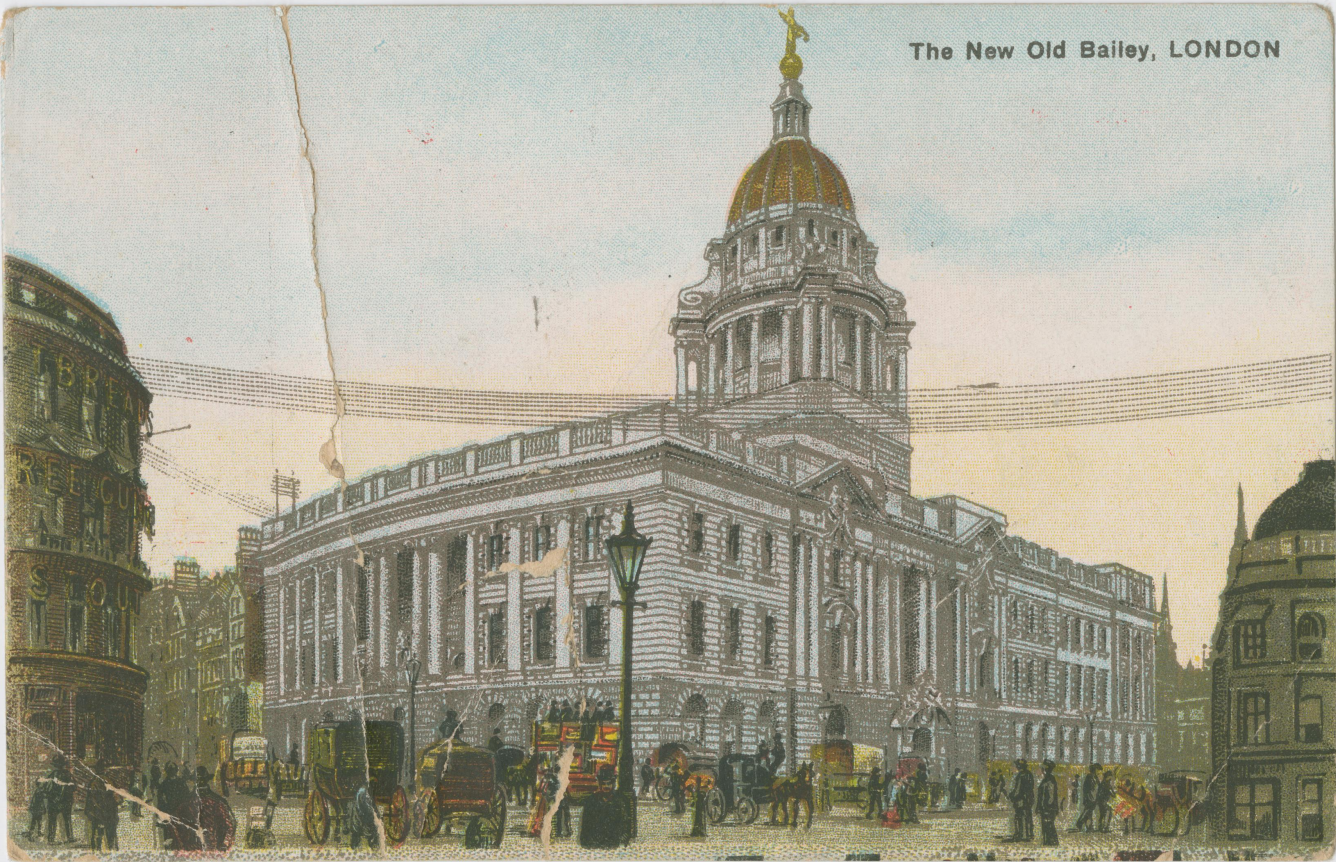
THIS SPACE FOR CORRESPONDENCE.

THE ADDRESS ONLY HERE.

Most of the people I talk with ask  
me how I like the tower bridge.  
It seems to be much thought of by the  
Londoner and certainly is a great  
piece of engineering. There are elevators  
which carry people up to the span on top  
when the leaves of the bridge are lifted.  
I saw them open the other day when I stood on  
London Bridge



The New Old Bailey, LONDON





# POST CARD.

Printed  
in Holland.

THIS SPACE FOR CORRESPONDENCE.

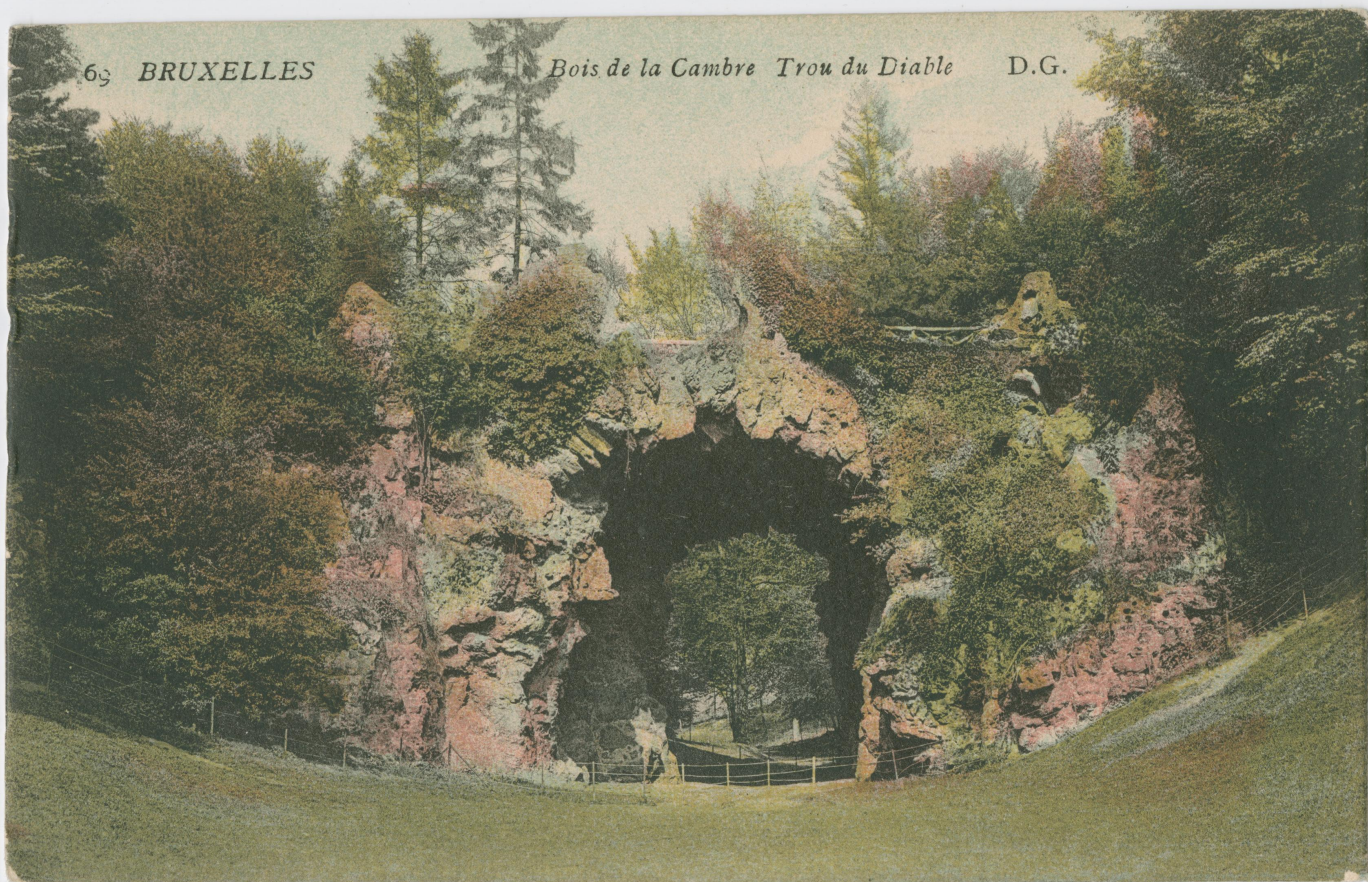
THE ADDRESS ONLY HERE.

I have not been very close to this building  
and really it is a place to steer clear of  
for it occupies the site of the old Newgate  
Prison, where so many thousands of people have  
been hanged. Dickens *Barnaby Rudge*, I think  
deals with it. I have read many ghastly  
stories concerning Newgate, Walter Scott  
brings it in one of his stories. The L. County  
Council are wide awake in rebuilding London  
E W



69 BRUXELLES

*Bois de la Cambre Trou du Diable* D.G.







*Amstel Hotel*

*Amsterdam*



Sept 16. Monday.

This is our present Hostel and you can see yourself what wide canals there are around, and there are scores of them. If Venice has more, I shall be surprised. This hotel has coolly appropriated the ~~the~~ entire sidewalk <sup>for a short period</sup> in front of the building and people have to turn off into the street until they pass the porch. This looks funny that to me, that the ~~the~~ citizens would put up with such an infraction of their rights.



La Haye

Vue extérieure de l'Hôtel du Vieux Doelen





Sept 15

After a good night's rest at Antwerp at Hotel Weber  
we left at 11<sup>30</sup> and enjoyed a long ride over the flat  
Country you can think of. It was as flat as a table and  
laid out in squares, by ditches to keep the land drained  
It is well named Netherlands. The soil seemed productive  
and we saw many fine gardens and produce farms, and  
we saw thousands of Holstein belted and spotted cattle.  
We had our baggage examined at Rotterdam and thence  
on through Holland, were meadows and windmills. We  
stopped off at the Hague, the capital of Holland, 156,000 Pop.  
The King and Queen are away, but we saw their palace

BRIEFKAART

08 53:08



SCHEVENINGEN  
Heerenbaden





Sept 16.

We find that we get pretty tired moving  
around so rapidly the last few days. We  
left Paris for Brussels where we remained  
3 days, then made Antwerp for 24 hours, then to  
the Hague for a day and to night we are in  
Amsterdam, which has as many canals  
as any of the other Dutch towns. We skipped Rotterdam  
and Delft and Leyden and Haarlem and other  
interesting towns, because we simply  
cannot try to see everything, - so two Dutch towns are enough







11747 Luzern — Das Löwendenkmal



Sept 24<sup>th</sup>

My dear son, this is a fine old lion and he is  
cut out of the great cliff of white sandstone  
which you <sup>do not see</sup> above him, but which is there. It is  
the work of Thorwaldson, a famous Danish sculptor  
and commemorates the slaughter of the 26 officers  
and 800+ Swiss soldiers, who were the body guards  
of Louis XVI. The mob overpowered them in the Palais  
de Justice in Paris and murdered the whole lot  
who died fighting. We leave Lucerne to-morrow  
for Interlaken

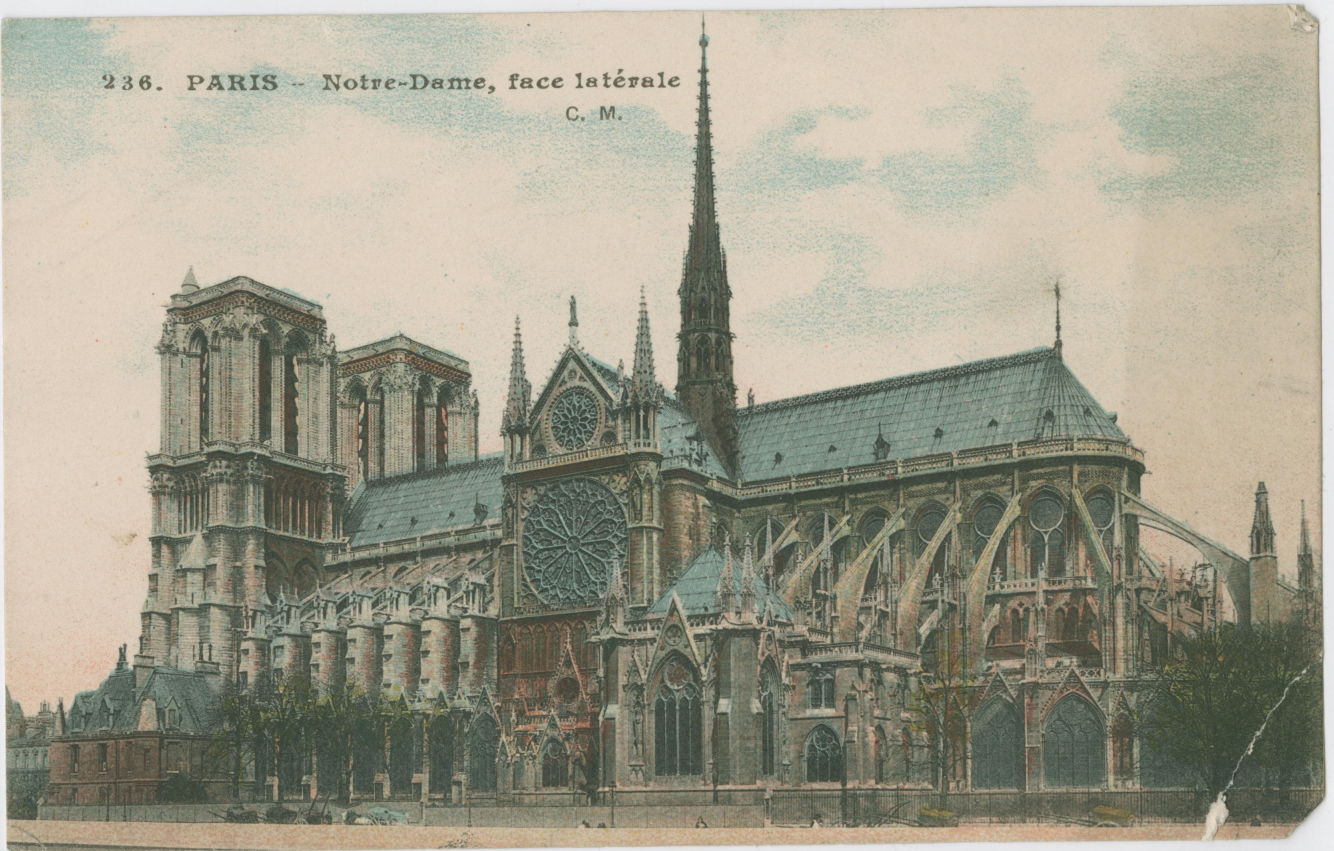




112 PARIS. — La Tour Saint-Jacques. — LL.



236. PARIS -- Notre-Dame, face latérale  
C. M.





# CARTE POSTALE

Correspondance

Adresse

I may have sent you a picture of Notre Dame, but a different view. This is to my mind a most wonderful and beautiful pure Gothic cathedral. The tower was not built on account of the weak foundations.

M \_\_\_\_\_  
\_\_\_\_\_  
\_\_\_\_\_  
\_\_\_\_\_





J. J. 6658 Chamonix. Village et Glacier des Bossons.





1690 Pilatusbahn. Eselwand



They have a cogwheel railroad up Sept 24  
Pilatus and it looks steeper than  
the Mt Washington Cog. Gracie you  
gave me and I have got a hotel key.  
None of us intend to climb mountains  
even on a railroad. You will have to  
do that when you come over.

Lucerne is a lovely town and the river  
Reuss which flows out of Lake Lucerne is  
the ~~best~~ <sup>most</sup> water I ever saw in a river



*Chamonix.*

*Dans les Séracs.*







2711. Genève. La Rade.

V.F.



Köln a. Rh.

Dom. Südseite.





Sept 19<sup>th</sup> Saturday.

Dear son we all ate breakfast at the  
fine Amstel Hotel in Amsterdam this morning  
and took a 9<sup>30</sup> fast train for Cologne in Germany.  
We parted with Holland with regret for they are  
polite and amiable people, and they have been the  
best fighters in the old days, when the Spanish  
under Duke of Alva was trying to oppress them  
they fought for eighty years and finally  
threw the Spaniards and established the Dutch  
Republic. We arrived in Cologne after a pleasant  
ride of 5<sup>1</sup>/<sub>2</sub> hours and are stopping at the Dom Hotel  
near the great Dom.





Nürnberg

Erker am Sebaldus Pfarrhof

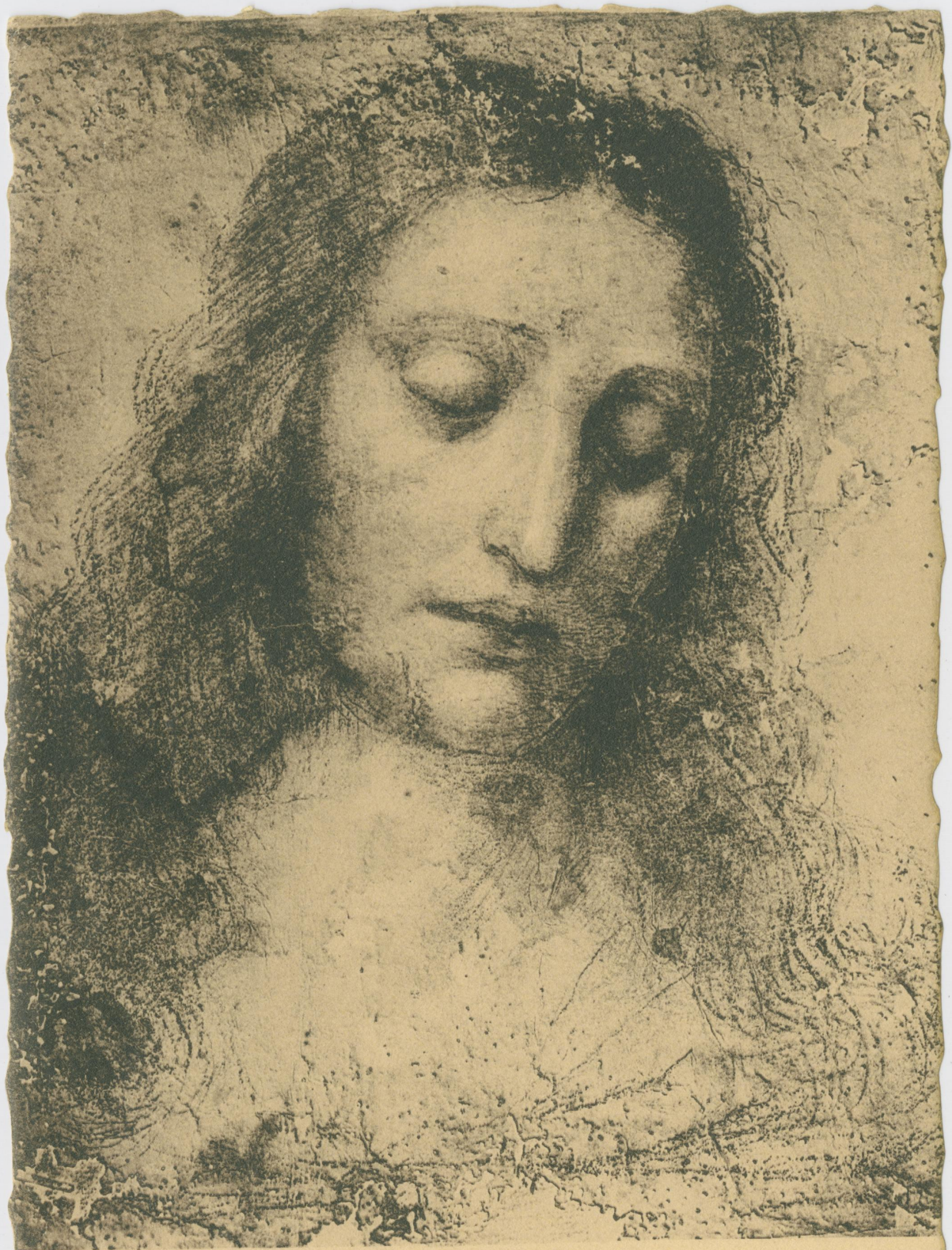


Nürnberg

Stadttheater







**Cristo - Studio del Cenacolo (L. DA VINCI)**

*Milano R. Pinacoteca, Palazzo Brera*



Milano



Chiesa di S. Maria delle Grazie







*Venezia - Canal Grande - Palazzo Franchetti.*





*Venezia - Chiesa di S. Maria della Salute.*







Rheinl. Rh.

Dom, Inneres.



The great piers which support the roof look like  
a collection of smooth tree trunks bound together.  
Mother says that the aisles of forest trees first gave  
a poetical architect the idea of the gothic church,  
and you can see how the piers in this picture resemble  
a forest of trees. The height of the arched roof is very great,  
and one wonders how an architect could conceive  
or carry out a complicated system of arches  
as you see, which could support such a weight without  
a crack or sign of trouble. You know there is not a  
stone roofed gothic church in the whole of the United S.  
They all have wooden or plastered ceilings. He built  
very well, but none of our buildings will last 700 years



GIBRALTAR

Casemates Square.

