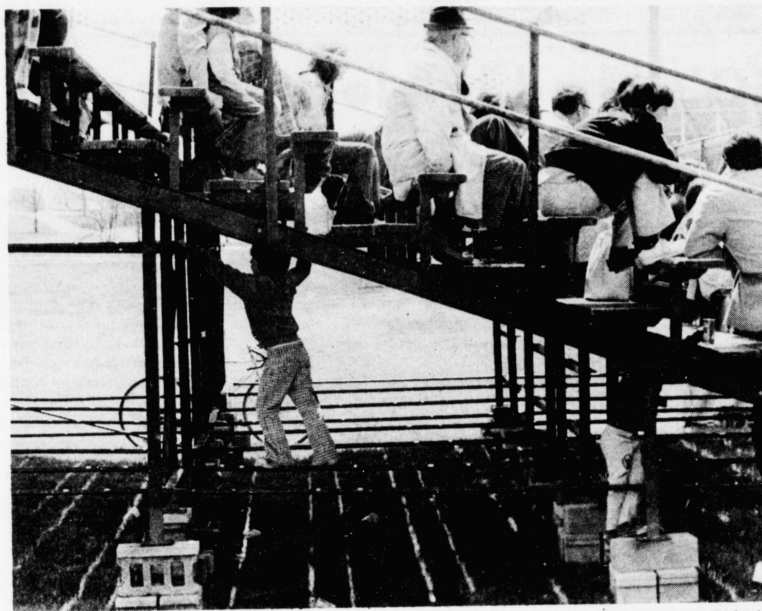


FILM

## I walk the line

Zack Wade, "walks the tightrope" during the UK-Tennessee tennis match yesterday held at the Seaton Center. Zack, 7, is the son of Mr. and Mrs. Dick Wade.



Kernel staff photo by Ed Gerald

# KENTUCKY Kernel

an independent student newspaper

Vol. LXVI No. 149  
Monday, April 21, 1975

University of Kentucky  
Lexington, Ky. 40506

## Civic center and UK resume negotiations

By RON MITCHELL  
Managing Editor

Lexington Civic Center Corporation (LCC) representatives and University officials will resume negotiations Tuesday concerning use of the Lexington Civic Center.

The first in a series of negotiating sessions will be held Tuesday at 9:30 a.m. in the office of Larry Forgy, UK vice president for business affairs and treasurer, according to Bruce Glenn, LCC negotiating committee chairman. Forgy is the University's chief negotiator.

LCC IS A public, non-profit corporation established to oversee the administration of the \$46 million Lexington Civic Center, now under construction. The center is located in an area bounded by Main, Vine, High and Patterson Streets.

The University's position during the negotiating sessions will probably be decided this afternoon at the open meeting of the UK Athletics Association Board of Directors. The meeting will be held in the UK Administration Building.

Although previous negotiating sessions between the University and LCC have been closed, Tuesday's meeting will be open to the public and press as a result of an opinion released Friday by State Asst. Atty. Gen. Carl T. Miller Jr.

**MILLER RULED THAT** Kentucky's sunshine law applies to these sessions because the University is a state agency and LCC is a part of Urban County government. Miller said the law applies to other LCC committees and sub-committees.

Contract negotiations are not exempt

under the state's open meetings law, Miller said.

This latest negotiating session evolved after the University announced it was ready to resume negotiations. The LCC board of directors passed a resolution Thursday directing the LCC negotiating committee to schedule a meeting with UK officials.

**BUT THE LCC** resolution stipulated that the meetings be closed. Last week Lexington Mayor Foster Pettit and Urban County Councilman William Hoskins, who is also an LCC board member, publicly favored a closed meeting.

The LCC-University negotiation sessions were interrupted by a controversy concerning the number of professional basketball games to be played in Rupp arena. The University and LCC agreed last July not more than seven pro games could

be played per year and none of those games could be scheduled during UK's regular basketball season.

When details of the interim agreement were made public last week by UK President Otis A. Singletary, the Kentucky Colonels, a Louisville-based American Basketball Association team, withdrew their requests to play in Rupp Arena.

**TWO WEEKS** ago the Urban County Council unanimously agreed there should be no limitations on the number of professional games to be played in the arena.

If the negotiating session is private it could be voided if a private citizen challenged it in court, Miller said. But, if action taken during the meeting goes unchallenged, he said, it would be legally valid.



P.S. Sabharwal

## New academic ombudsman strives for campus cooperation

The University's new academic ombudsman feels cooperation among students, faculty and administrators is needed to provide a happier University environment.

"If a student's problem is real then faculty and administration should help solve that problem," said Dr. Pritam S. Sabarwal, biology professor. "To create a happier situation it takes the cooperation of students, faculty and administration."

**SABARWAL SAID** IN his one-year term as ombudsman, which officially begins July 1, he will attempt to "get the job done without hurting anybody and by cutting red tape."

"To make the situation happier we have to give in something. The students have to give, the faculty has to give and the administration has to give. It can't be a 'take' situation," he said.

Sabarwal, a native of New Delhi and a UK faculty member since 1966, said he will attempt to help students understand "the University belongs to us and we belong to the University."

**HE SAID ONE** of the major problems of the job will be to make students aware the ombudsman's office exists and to persuade students to bring their problems to him.

"If a student has a problem he will have to bring it to somebody to get it solved," Sabarwal said. "If you keep it to yourself you don't want to get it solved."

Sabarwal said he had been active in many student-oriented programs, but the one he is most proud of is the Adopt-a-House program.

**DEVELOPED BY SABARWAL** and a group of students approximately two years ago, the voluntary service program helps local residents paint and clean up their property at no charge.

Continued on page 5

## SG's shoddy election procedures slip by

The true character of this year's Student Government (SG) shined through once again during the SG elections held last week. This time its lackadaisical attitude came very close to having the elections declared invalid.

SG President David Mucci evidently failed to familiarize himself with University Senate rules which stipulate that SG must have its election procedures approved annually by the University Senate Council, the administrative arm of the University Senate. The senate also requires SG to reapportion its

seats each year. Twenty-five student Senate seats are apportioned according to the number of students in each college.

Neither of these procedures was begun until about a week after the official filing deadline for SG offices. The blame shouldn't be placed on Elections Board Chairwoman Emily Ledford, but on Mucci for not knowing the University Senate rules.

If SG does not adhere to the Senate's election rules the Senate usually declares elections invalid, therefore denying students

representation on the University Senate, the Senate Council and all Senate Committees. This year, because the senate was willing to stretch the rules, SG was allowed to slip by with its shoddy election procedures.

SG was fortunate that the apportionment of senators remained the same as last year. If there had been a change in the number of senators from each college it would have been, rather difficult for them to make the change since the filing deadline had passed.

After SG realized its neglect some Election Board members finally hand-carried the procedures to members of the Senate Rules Committee, who approved them. However, Joseph Krislov, Senate Council chairman, said the Council did not have a chance to formally approve the procedures because they did not receive them.

Technically the election should have been declared invalid. It was not, but we chalk up another blunder on SG's behalf for its tardiness and failure to carry out its responsibilities.

### Nicholas Von Hoffman

## After 300 years, witchcraft is on the docket again

By NICHOLAS VON HOFFMAN

LOS ANGELES — After Zsuzanna (or Z, for short) had answered three or four phone calls in the back of her shop where she sells herbs, candles and occult supplies, she announced that, "High priestesses are flying in left and right for my trial."

For all of Z Budapest's unconventional assertiveness, her arrest for fortunetelling, or divination as she prefers to call it, by the Los Angeles police has shaken her up. As the high priestess and top witch of the Susan B. Anthony Coven No. 1, Z considers foretelling the future by reading tarot cards part of her religion, which, however, doesn't seem especially well suited to battling the authorities.

"I'D NEVER been arrested for anything before. I thought I was a religious leader," says Z, who was born in Hungary but escaped at age 16 when the Russians destroyed the Freedom Fighters' revolution. "I could make a helluva analogy between Communist Hungary and capitalist America...those cops coming in here, taking out handcuffs — the symbol of bondage — freaked me out. I promised them four months of nightmares. They were searching for guns. I said, 'I don't need guns. I have candles.' No, I didn't really say that, so don't put it down."

The spirit of Z's religion isn't combative, but rather more given over to dancing, ritual, love-making and feasting. "Life-affirming," she calls it. "We don't think there is any merit in celibacy or self-deprivation. We celebrate a lot; we have eight major holidays a year — every new moon and every full moon is one; not once do we worship the death principle," Z explained. In fact, one of the officers is called The Nymph, "and her only function is to see that the coven has fun, to make sure there is plenty of good wine and plenty of the sacred salami."

In the event that the Los Angeles police can't be induced to partake of the sacred salami, the coven, which numbers 300 women, does have some of the traditional curses with which to defend itself. Z says they can hex rapists, and that once a group of 13 witches destroyed the ground where the men had built "a jock temple," or stadium, when the women wanted a child-care center. The problem, as Z points out, is that curses take two or three years to realize themselves while masculine guns speak ever so much more quickly.

ONE OF THE reasons that Z Budapest began the coven and the Feminist Wicca, as she calls her shop, is like that which impels other women to demand ordination in the Episcopal church; the feeling of exclusion. But Z goes further. She has come to look on Christianity — she was a Catholic much of her life — as a "patriarchal," anti-feminist faith. In that regard one of the more interesting books she has in

her store is an 1895 "Women's Bible" put out by a group of women led by the great 19th-century feminist, Elizabeth Cady Stanton. The "Women's Bible" tries to demonstrate that orthodox scripture is a giant male usurpation.

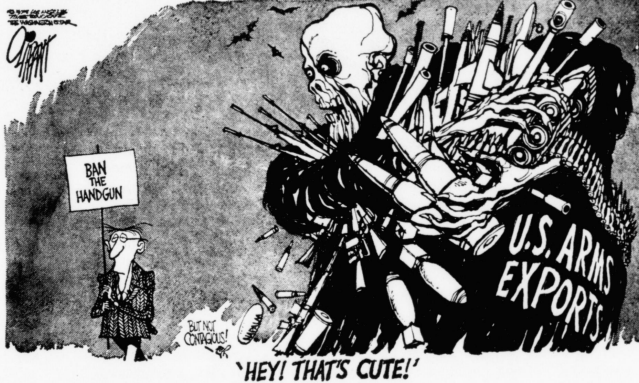
For Z, the enthronement of Father Zeus and the other principal male gods in the place of older, female divinities ushered in the slavery of marriage for women. Beyond that and their banishment from religion and politics, it gave most of our civilizations an overly male hue. "To exclude the female principle from public life results in extremes by which the male principle goes unchecked," says Z in offering an explanation as to why "people go around playing suicide games."

Z's witchcraft or paganism is something that she has built up as she goes along and has inherited from ancient times. The Avatar Goddess of Witches Aradia, Z says, is a very, very old lady, and it is Aradia's "Book of Shadows" that the coven follows when it meets in its secret places on mountaintops to invoke her and the other distaff spirits.

WHILE MUCH of this is delightfully spooky, it has nothing to do with the more wicked forms of diabolism which are rumored to be practiced in these parts. "Satanism," Z remarks, "is just the flip side of Christianity, and we don't have anything to do with that. My religion isn't supernatural. I believe my religion is very earthy in fact. I believe in what works."

Most covens are coed. Over the centuries, large numbers of men as well as women have been killed for practicing witchcraft. Still, there is a decidedly feminine aspect to the occupation, perhaps because it is a low-overhead religion you can practice at home in the kitchen. Z erects her altars in the backyard between the clotheslines. But the boys busted her anyway, thus making Z Budapest the first witch to be tried in this country in 300 years.

Nicholas Von Hoffman is a columnist for King Features Syndicate.



### Letters to the editor

## Show opposition to war

The events in Indochina over the past three weeks have brought new political and military aspects to the situation. The ending of the long war grows nearer. Two-thirds of the area below the 17th parallel is now in the hands of the Provisional Revolutionary Government (PRG) of South Vietnam. Thieu's government is in a precarious situation — his cabinet has resigned and the military leadership of the Saigon Regime has no cohesion. In Cambodia, the U.S. and Lon Nol have suffered almost total defeat. Saigon and Phnom Penh stand in isolation.

Here at home, the President is trying to blame Congress for the recent events in Vietnam. Yet, it was Thieu's decision to withdraw troops from the Northern and Central provinces. Ford and Kissinger still continue to press for more aid, both military (over \$700 million) and "Humanitarian" (\$250 million) in the face of almost overwhelming opposition from the Congress and the majority of American people. Please demonstrate your opposition to

this new American escalation of the war by writing your senators (Wendell Ford and Walter "Dee" Huddleston) or sending an inexpensive mail-o-gram immediately, as the supplemental aid vote will be the first item of business when the Congress returns from its recess. Sen. James Abourezk has submitted an amendment to this bill calling for the end of all military aid to South Vietnam and calls only for the humanitarian aid. Please urge our senators to support this amendment. This is a major thrust of the campaign to end the war.

For peace and reconciliation in Indochina.

Mary Elizabeth Branaman  
Jack Beckford  
Lexington Indochina Committee

### It's personal

I have never submitted nor do I ever intend to submit a "personal" to your classified ad section.

Without my prior knowledge or permission, an unidentified per-

son or persons placed a "personal" in Tuesday's *Kernel* and signed my name to it.

The "personal" was so ridiculous, I chose to believe that it was merely intended as a joke by those persons involved. However, it was taken seriously by a number of people and I resent the time and energy I have had to spend disclaiming this little item. In addition to the personal embarrassment involved in its publication, this "personal" enabled a campus-wide dissemination of information which I wanted to share only with my friends.

In my case, the damage is done. However, I hope that some form of identification process will be instituted by your advertising department to prevent further gross misrepresentations of this sort.

B.J. Dollase  
A&S senior

Editor's note: We regret the embarrassment caused and must now request all "personals" in the classified ad section contain the writer's signature, address and telephone number.



# SCB misunderstood

By GEORGEANN ROSENBERG  
and  
TOM WHEELER

We understand that the policy of the comment page allows anyone to express their viewpoint, regardless of whether or not they know anything about the situation. Obviously, Lynn Funk's comment (Fri., April 11) expressed this right to be misinformed.

Any individual on this campus has a right to approach Student Center Board (SCB) to discuss and learn about the operation of any committee. Funk, as a residence hall president and Kernel staff writer, as well as any campus leader concerned with campus activities and programs, has not only a right but a responsibility to find out this information.

**THE CONCERT** Committee, for one, has always realized that there are many misconceptions about its operation. To help alleviate this problem, the concert committee has held a gripe forum and has always welcomed student input. They have expressed regrets that more students do not take advantage of these opportunities.

When concert co-chairperson, Don Trimbath, explained to Funk that no one was available for the LKD date, she proceeded to "translate" this as meaning "no band which would insure a definite profit." Had Ms. Funk not "translated" for Trimbath, but asked him about this allegation, she would have been informed of the following points.

First of all, there were no major acts available. The concert committee negotiated for several months trying to book a LKD concert. When this proved impossible they tried to work out a festival with several smaller acts. Due to routing problems the groups found it impossible to get to Lexington on the available date. Funk's concern over a concert's profitability is totally unfounded. The concert committee has a basic philosophy of

booking concerts for the campus, and is not as overly concerned with profit as Funk seems to think. The committee would not book a concert which would not sell, but in the same light maintains the lowest possible ticket prices on all concerts basing them on a breakeven basis.

**UNLIKE MANY OTHER** schools—a very basic, but major problem is the size of facilities—Memorial Coliseum seats 12,645 and the Student Center Ballroom's capacity is 1,200. This virtually eliminates many of the popular groups such as Jackson Browne who wants to play in a 5,000 - 7,000 seat auditorium. A second major problem is the availability of the Coliseum during the Spring semester. For example, during March the Coliseum was available only two days when students were in school. Obviously, this makes booking difficult.

Funk also implied there is considerable disorganization in other areas of the SCB as well. Had she taken the time to be more thorough, she would have realized that the crux of the problem is hardly disorganization on the part of the SCB, but the lack of communication and interest on the part of many segments of campus, including residence hall governments.

The SCB is responsible for getting out general information to the campus. We have a very good internal structure to accomplish this. Considerable time and effort is put into advertising and publicizing the events we sponsor. However, the SCB cannot spoon-feed certain individuals with this information.

**GARY HOLMQUIST**, PERFORMING arts chairperson, made an effort to go to the north campus with a program. He made arrangements with Reader's Theatre two months in advance and they cancelled two days prior to the show. Kernel deadlines made it impossible to retract the information after it was



Robert Pryor

publicized. How can this be an example of SCB disorganization? For point of contrast, Complex Government approached us with the idea of co-sponsoring the David Foy lecture. They assumed the responsibility to come to us. We agreed to co-sponsor the event and we look forward to more programming and better relations with any dorm government.

We do, however, hope that if dorm governments see a need for more promotion and information on campus events, they will take the initiative to facilitate

this. And if we send out information, we hope dorm governments can develop, within themselves, a good system of relaying it.

All SCB committees are interested in reaching all segments of campus. We hope that residence hall governments are interested in working with us and we hope to establish good future relations.

Georgeann Rosenberg and Tom Wheeler are members of the Student Center Programming Board.

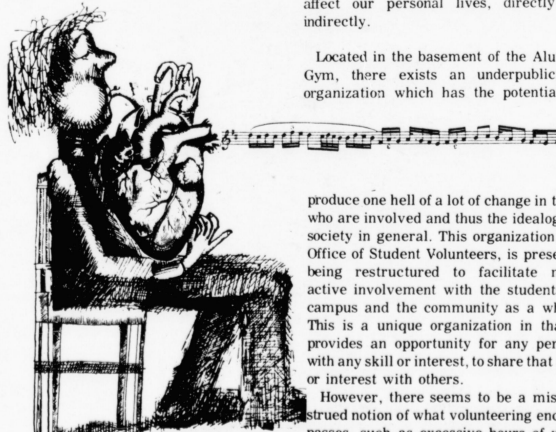
# Volunteers: Potential to change society's ideology

By JOHN RHODES

It seems we live in a society which reinforces verbalization of ideas, yet stifles, through an induced ethnocentrism, active participation in change. The so-called "silent majority" is not exceeded in its criticisms of the present system and proposals for something better, yet sits on its gluteus maximus, waiting for that day of a "great awakening." How many times have all of us been the recipient of a tirade of complaints and suggestions in everyday conversation with Bill or Becky Bitchabunch? How many times have we all been a Bill or a Becky? Maybe the "silent majority" should be reclassified as "VAAP." A VAAP is not a relative of the aardvark—it is a human being—verbally Active and Actively Passive.

Think about this, what can we, what can each of us, do? First of all, a reorientation in perspectives and values is necessary. How important is "me and my little world?" Pretty important, right? Right. It's unfortunate that most of us have been conditioned by an ideological system of pseudo-noble facades obscuring self-centered values, and so fail to perceive and thus integrate relevant external opportunities with our own personal lives. By reorienting ourselves toward more aware-

ness, integration, and active participation in relation to these opportunities, then improvement, in all probability, would occur in both our own little world and our immediate social structure, which are two peas in the same pod anyway.



Pius Rosado

**SO THE QUESTION** is, "What opportunities?" At this University there are a number of diversified organizations oriented toward some aspect of change. We're all too familiar with SG, the Student Center Board, etc., whose decisions often affect our personal lives, directly or indirectly.

Located in the basement of the Alumni Gym, there exists an underpublicized organization which has the potential to

produce one hell of a lot of change in those who are involved and thus the ideology of society in general. This organization, the Office of Student Volunteers, is presently being restructured to facilitate more active involvement with the students on campus and the community as a whole. This is a unique organization in that it provides an opportunity for any person, with any skill or interest, to share that skill or interest with others.

However, there seems to be a misconstrued notion of what volunteering encompasses, such as excessive hours of work every week, untold personal sacrifice,

martyrdom, etc. Sorry to pop your stereotyped bubble, gang, but it ain't that way!

**FIRST OF ALL**, the time element involved is not excessive as most believe; what's a couple hours out of the week to give a hand? Second, what's so sacrificing in beng with other people, since the choice of whom or what group one wishes to work with belongs to the volunteer. Finally, there's the notion of martyrdom, or the Joan of Arc syndrome, which just doesn't exist in the new program being developed.

Completing the circuit we return to "me, myself and I," which is where most of our heads are anyway (aw, come on and admit it, I do) and ask ourselves what personal outcomes we'll get. Fortunately, that can only be answered by the person involved, and then only when he actually is involved, as opposed to merely projecting himself into the situation.

With such a reservoir or potential in all of us, one is left with a choice: participatory apathy, or, more hopefully, active participation and involvement with other people, the result being...change.

John Rhodes, an A&S junior, is a member of the Student Volunteer Advisory Council.

**OPEN ENROLLMENT**  
FOR  
**HUNTER FOUNDATION**  
— **UNIVERSITY OF KENTUCKY GROUP PLAN**  
**ENDS**  
**APRIL 30, 1975**  
NEXT ENROLLMENT — FEBRUARY, 1976  
to enroll NOW - contact:  
UK Employee Benefits Office  
Room 310 — Service Building  
Telephone — 257-2831  
**IMMEDIATELY**  
The Hunter Foundation is a health maintenance organization with 26 services.

## North Viets surround province near Saigon

SAIGON (AP) — North Vietnamese forces backed by tanks closed in Sunday on another province east of Saigon and the evacuation of both government forces and civilians appeared to signal its imminent collapse, field reports said. Americans flew out of Saigon at an accelerated pace.

Binh Tuy province would be the 20th of South Vietnam's 44 provinces to fall into the hands of Communist-led forces, most of them since mid-March.

IN CAMBODIA, the Khmer Rouge marched unopposed into Poipet along the Thai border, one of the few Cambodian towns which had not previously fallen to the insurgents. A newsman who saw Poipet from the Thai side said the takeover was peaceful and that residents greeted the rebels with cheers and white flags draped from buildings.

Hundreds of Americans and their Vietnamese wives and children were evacuated from the South Vietnamese capital aboard U.S. Air Force C141 transports that had brought war materials in from Clark Air Base in the Philippines.

## Lon Nol to buy house in Honolulu subdivision

HONOLULU (AP) — Former Cambodian President Lon Nol plans to buy a \$103,000 house in a Honolulu subdivision, a realtor says.

An agent for Mike McCormack Realtors here said the former political figure last week visited the home in the Hawaii Kai subdivision, located in a mountain-ringed valley. Lon Nol and his wife liked the house, the agent said, and decided to buy it.

THE FORMER CAMBODIAN president, his family and about 20 other Cambodians in his entourage are staying in special quarters at Hickam Air Force Base near Honolulu.

The two-story, four-bedroom house is located in the Mariner's Cove section of the subdivision originally developed by the late industrialist Henry Kaiser. Homes in the area range between \$75,000 and \$750,000.

The real estate agent said the papers for purchase of the home had to go through escrow and the final financing details are expected to be completed next week.

## Courier-Journal alleges meeting between Ford and coal operators

LOUISVILLE (AP) — A secret meeting between Wendell Ford and 16 Kentucky strip mine operators in 1971 resulted in cash and pledges of up to \$80,000 for Ford's gubernatorial campaign. The Louisville Courier-Journal and Times, quoting several persons at the meeting, reported in Sunday editions.

In a copyrighted story, the newspaper said the meeting between Ford, who was then lieutenant governor, and the coal operators, was held in Wise, Va.

FORD HAS DENIED that the purpose of the meeting was to collect money. He also has denied that any money was collected then or later.

The newspaper quoted Ford as saying the purpose of the meeting "was like every other meeting. I was campaigning for votes. Wise was a central location where a plane could land safely at an airport which had been constructed from a surface mining area. I wanted to see it."

The newspaper article, written by reporter Kyle Vance, says the operators became "furious" with Ford because they say he broke some of the promises he made at Wise. The story said Ford has angered the coal operators by supporting strip mine control legislation.

THE NEWSPAPER SAID it submitted a set of written questions to Ford, who became governor and is now a U.S. senator.

One of the questions was: "Do you in fact now deny all allegations made by coal operators who say they attended the Wise meeting and gave money to your campaign?"

The senator's answer: "I recall the words of a former boss: 'I deny the allegations and I defy the allegator.'"

# Pizza Inn

AMERICA'S FAVORITE PIZZA

**477 New Circle Rd**  
NW At Russell Cave

**FIGHT INFLATION WITH PIZZA**

**FAMILY SPECIALS**  
EVERY TUESDAY  
PIZZA BUFFET  
5:30-8:30 P.M.  
1/2 Price Children Under 12  
All the Pizza and Salad You Can Eat for one low price

**\$1.69**

**EVERY WEDNESDAY**  
SPAGHETTI  
Includes Spaghetti, Salad and Garlic Toast

**\$1.19** Meat Ball **\$1.49**

Meat Sauce 1/2 Price Children Under 12  
**ALL DAY**  
SUNDAY PIZZA BUFFET  
After Church—Noon-2:30 P.M.  
1/2 Price Children Under 12  
All the Pizza and Salad You Can Eat for one low price

**\$1.69**

ANY SIZE!

BUY ONE  
PIZZA  
GET ONE  
FREE

ANY TYPE!

PHONE ORDERS BOXED AND  
READY IN TWENTY MINUTES

**BRING THIS COUPON**

FREE

Bring this coupon and receive one pizza free with the purchase of one of equal value. One coupon per visit, please.

Valid through May 15, 1975

**Open 7 Days A Week**

477 New Circle Road  
NW at Russell Cave  
Lexington, Ky.  
Phone 293-0568

## Pizza Inn

	Small	Medium	Large	Giant
MOZZARELLA CHEESE	1.35	1.90	2.70	2.70
ONION	1.60	2.20	3.15	4.10
GREEN OLIVE	1.60	2.20	3.15	4.10
BLACK OLIVE	1.60	2.20	3.15	4.10
GREEN PEPPER	1.60	2.20	3.15	4.10
BEEF	1.70	2.25	3.70	4.80
MUSHROOM	1.80	2.45	3.75	4.95
DOUBLE CHEESE	1.80	2.45	3.70	4.80
PEPPERONI	1.80	2.45	3.70	4.80
BEEF	1.80	2.45	3.70	4.80
SAUSAGE	1.80	2.45	3.70	4.80
SHRIMP	1.90	2.55	3.85	4.95
BAKED CLAMS	1.90	2.55	3.85	4.95
CANADIAN BACON	1.80	2.45	3.70	4.80
HOT JALAPENO	1.55	2.20	3.15	4.10
ANCHOVY	1.55	2.20	3.50	4.60
1/2 CHEESE 1/2 SAUSAGE	1.65	2.25	3.25	4.25
1/2 CHEESE 1/2 BEEF	1.65	2.25	3.25	4.25
PIZZA INN SPECIAL	2.20	2.95	4.30	5.60
BEEF & CHOPPED ONIONS	1.95	2.70	3.95	5.20
PEPPERONI & MUSHROOMS	1.95	2.70	3.95	5.20
PEPPERONI & GREEN PEPPER	1.95	2.70	3.95	5.20
SAUSAGE & MUSHROOM	1.95	2.70	3.95	5.20
Each Added Ingredient	.25	.30	.35	.45

Extra Ingredients Not Added to Plain Cheese Pizzas  
Ask About Our Party Facilities

The Kentucky Kernel, 114 Journalism building, University of Kentucky, Lexington, Kentucky, 40506, is mailed five times weekly during the school year except during holidays and exam periods, and twice weekly during the summer session. Third-class postage paid at Lexington, Kentucky, 40511.

Published by the Kernel Press, Inc. Founded in 1971. Began as the Cadet in 1894 and published continuously as the Kentucky Kernel since 1915.

Advertising published herein is intended to help the reader buy. Any false or misleading advertising should be reported to the editors.

Kernel Telephones  
Editor, Editorial editor 257-1755  
Managing editor, News desk 257-1740  
Advertising, Business Circulation 258-4646  
Sports, Arts 257-1800

The  
Kentucky  
Kernel



campus

# Brower stresses conservation of energy resources for future

By GAYLE HOFFMAN  
Kernel Staff Writer

Now is the time to begin efforts to conserve energy resources for generations to come, said David Brower in a keynote address which was part of an environmental workshop held April 18-19 at UK.

Brower, president of Friends of the Earth, an international conservation organization, said U.S. coal supplies can last for a long time, but only if the increasing growth of energy demands and decreasing supplies of other fuels are recognized.

"THE IDEA IS to try to make it last indefinitely," he said. "We've got to quit crying 'Emergency' as the excuse for using up our coal."

"By 1990, the choice must be made—do we feed automobiles, or do we feed people," Brower said. Oil will be needed for more important things than transportation, such as making fertilizer, he said.

Brower predicts that by 1990, 85 to 90 per cent fewer cars on the nation's highways.

"THERE COMES A time when the only progressive step is backward," he said. "That doesn't mean that we abandon our technology, but that we use it better."

"The top issue in the environmental movement is apathy," Brower said. Politicians and the press, he said, do not understand or aid the environmental movement. The public is way ahead of them in seeing the importance of environmental concern, he said. Brower warned politicians will not "get away with sloughing off" these issues.

Brower suggested the Army Corp of Engineers could use its "lobbying and engineering skills" in rebuilding the nation's railroads. "Let them fix road beds and not destroy river beds," he said.

BROWER'S SPEECH WAS sponsored by the UK Environmental Awareness Society and the Undergraduate Lecture Series.

## P.S. Sabarwal named academic ombudsman

Continued from page 1

The program is aimed mainly at senior citizens who cannot afford to repair property, Sabarwal said. There are now about 1,000 students involved in the project, he said.

Sabarwal said residents and students have been happy with the project.

"THIS PROGRAM HELPS expose students to the realities of this part of life. Some students were shocked to find this situation exists in this community this close to the University," he said.

In addition to helping senior citizens repair their residences, Sabarwal said students also take

people to the doctor, grocery and on several occasions bring them to campus for tours and dinner.

Sabarwal was awarded the UK Alumni Association's Great Teacher Award in 1973 and serves as faculty advisor to Alpha Xi Delta, a sorority, and the UK India Association.

SABARWAL STUDIED AT the Delhi University in New Delhi, where he received his Ph.D. in 1963.

The academic ombudsman is responsible for handling issues for which no established policy exists and for problems which have gone through regular procedures and have not been solved to the satisfaction of all concerned.

WANTED:  
SUMMER

circulation  
mgr.

Will Be Responsible For Circulating Summer Kernel (2 Days Per Week), Plus Mailing Of Newcomer Edition In August. Must Have Car, Will Train. See John Ellis, Rm. 210 Journalism Bldg.

Watch Coach Joe Hall conduct the Philharmonic!

# SUPER POPS SATURDAY

7:30 P.M.  
APRIL 26

MEMORIAL COLISEUM

Vincent DiMartino and the U.K. Jazz Ensemble **JAZZ**

J. D. Crowe and the New South **BLUEGRASS**  
Earshot & Lexington Philharmonic **ROCK & POP**

PROCEEDS TO LEXINGTON PHILHARMONIC  
TICKETS IN ADVANCE, \$2.00/AT THE DOOR, \$2.50

On Sale at Barney Millers, Kennedy Book Store, Philharmonic Box Office 266 0311 and Graves Cox -  
Space donated by Big Run Coal & Clay Co.

Super Pops Saturday Tickets On Sale In Lower Lounge, Student Center, 12 Noon To 3 p.m., April 21-25.

The American Mercury  
coming  
Wednesday  
on page 2

**MOST COMPLETE LAPIDARY SHOP**  
IN THE BLUE GRASS  
FINISHED JEWELRY AND GIFTS  
SEMI-PRECIOUS STONES  
MINERAL SPECIMENS AND CUTTING MATERIAL  
FROM AROUND THE WORLD  
EQUIPMENT AND SUPPLIES  
LEXINGTON CUT STONE MARBLE & TILE CO. 255-2496  
276 MIDLAND AVE. 255-2497

OPEN UNDER NEW MANAGEMENT  
**Arcade, Parlour & You Know What**  
Mon.-Thurs. & Sat. 4-1  
Fri. 2-1  
(21 & Over) 683 S. Broadway

## The LINGUISTICS Program

### As A Major:

Linguistics Provides Sound And Broad Study Of The Nature Of Language And Its Structures, Drawing On Resources From Anthropology, Computer Science, Psychology, Philosophy, European And Non-european Languages, As Well As A Variety Of Sources In Linguistics Proper.

### As A Minor:

Linguistics Makes An Excellent Supporting Area Or Double Major For Programs In English, Communications, Languages, Psychology, Philosophy,

### As Elective:

Linguistics Offers Several Upper Division Courses To Assist Students In Finding Interesting And Enriching Options.

### Offerings for Fall 1975 (Listed in Schedule Book) include:

- LIN 301 — No Prerequisite — Introduction To Linguistics
- LIN 515 — No Prerequisite — Descriptive Linguistics: Phonology (Course Now Titled Phonemics)
- LIN 395 — Independent Study
- A Challenging Interdisciplinary Program

**For Further Information On Courses And On The Program In Linguistics, See**

- Richard Levy — Anthropology
- William Magretta — English
- Michael McCord — Mathematics
- Thomas Olszewsky — Philosophy
- Jean Pival — English
- John A. Rea — French

# SOUTHLAND DRIVE is ALIVE

LEXINGTON'S MOST COMPLETE AND CONVENIENT SHOPPING AREA FOR UK STUDENTS

Southland - where these merchants offer you complete selections and personal, friendly service - just a short drive away!

**If You Own A Volkswagen, Datsun, Capri, Toyota, Or Colt, Our Specialists Have Something For You.**

The MacPherson Strut Replacement Cartridge

**From Monroe**

Before Replacing MacPherson Struts Was A Time consuming Rebuilding Job For A Skilled Mechanic. Now, Monroe Makes It A More Economical Operation With Cartridges Factory sealed To Assure Quality And Ease Of Installation.

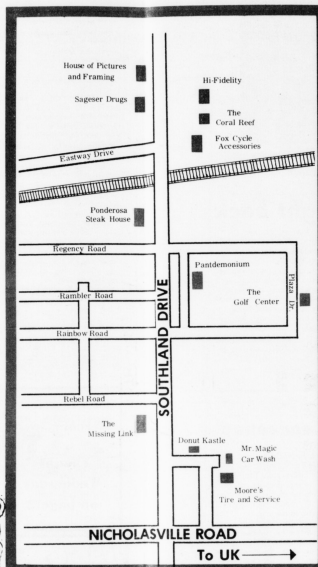
**AT THE POWER CENTER MOORE'S Tire And Service**

171 Southland Drive  
Phone 278-9481

**House of Pictures and Frames**  
Specializing in Custom Framing and Collector's Prints  
Complete Selection of Paul Sawyer Prints  
472 Southland Drive 277-1841

**KICK THE BUCKET Full Service Car Wash**  
(Includes Inside Cleaning)  
Plus Hot Wax Treatment  
A \$3.60 Service For \$2.50 With UK I.D. Exp. April 28  
**MR. MAGIC CAR WASH**  
Southland Drive  
Behind DeNur Kastle

**Valuable Coupon**  
35 varieties of Donuts  
OPEN - 7 DAYS A WEEK  
24 Hrs. at Southland 277-9414  
20% OFF DOZEN of DONUTS  
Choose Your Favorite Present This Coupon.  
**Freddie DONUT KASTLE**  
185 SOUTHLAND DR. GARDENSIDE PLAZA



**SAVING YOU MONEY IS OUR BAG!**  
Best Club Buys In Lexington!  
Wilson Walker Cup 2 5 Irons - 2 Woods  
List \$85 - Only \$58.95 Plus A Free Bag Included!  
Ram Dave Hill 8 Irons - 3 Woods  
List \$105 - Only \$64.95 Plus A Free Bag Included!  
Savings On Top Quality Balls  
Ram Pros Spalding Era  
List \$15 doz. - Only \$7.95 doz. List \$15 Doz. - Only \$7.95  
**The GOLF CENTER**  
277-6631 2nd Plaza Dr. 12:30-7:00  
Just Off Southland Dr. Tue., Wed., Fri., Sat. 10-5:30

**The Coral Reef**  
tropical marine fish tanks & accessories  
small pets & supplies  
12:30-7:00  
MON-SAT 357  
SOUTHLAND DR.

**SAGESER DRUGS**  
*"Like going to your hometown druggist"*  
Wes Marion Dwaine Green  
Proprietors  
Free Delivery  
392 Southland Dr. 277-1186

**TUESDAY - STUDENT NIGHT**  
**\$1.25 SPECIALS**  
Rib Eye Steak broiled to order, plus a steaming baked potato, crisp tossed salad, and fresh buttery roll.  
Chopped Beef Dinner, Complete with salad, potato, roll and butter.  
**Ponderosa Steak House**  
284 Southland Drive 1316 Russell Cave Road

**The Missing Link**  
Your LEVI'S Store  
**10% Off** On All Purchases With UK I.D.  
Thru May 8th  
Mondays thru Thursdays  
136 Southland Dr.

**FOX Cycle Accessories**  
"All Your Motorcycling Needs"  
UNDOUBTEDLY THE BEST PRICES IN LEXINGTON  
353 Southland Drive 278-7424

**TDK C-90 Super-Dynamic Blank Recording Cassettes Low Noise, High Output**  
2-Pack Reg. 7<sup>99</sup>  
Now **\$5.40**  
**HIFI FIDELITY**  
423 Southland Drive Next to Sir Pizza

**Tuxedo's**  
Jacket, Shirt, Tie and Boutonniere  
only **\$9.99**  
Kentucky's original \$5.00 pants store  
**PANT demonium**  
(next to the best Pizza Place in town)  
243 Southland Dr. 277-9942

You Are Invited To A Free  
Theosophical Study Series

Life's Purpose  
Life After Death  
Reincarnation  
Karma, Etc.

April 22 7:30 p.m.  
Howard Johnson Motor Inn  
2280 Nicholasville Rd. Lexington, Ky.



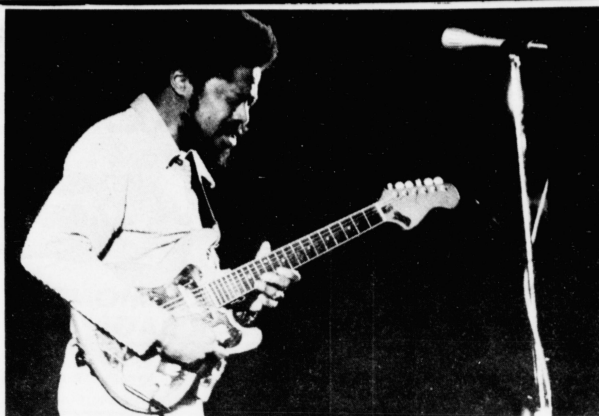
**Piedmont's new 50/30 Excursion Plan. Saves you money, buys you time.**

And taking advantage of it is simple. You can leave any time on a Saturday. Then save up to 50% on the return portion of your Piedmont ticket—just by coming back on a Saturday, Sunday or up to noon on Monday, within 30 days of departure. That's Piedmont's 50/30 Excursion Plan. An easier than ever way to take us up and save.

Piedmont also offers special Group 10 Fares and more-for-your-money vacation package plans.

We've got a place for you, along with plenty of money-saving ways to get there. See your travel agent or call Piedmont Airlines. Most major credit cards accepted.

**PIEDMONT**



Kernel staff photo by Larry Mead

Son Seals (above) led his Blues Band in a searing concert in front of a small, but enthusiastic, audience Saturday night in the Student Center Grand Ballroom. Seals, who like many modern blues musicians, came out of the southside of Chicago's music scene, electrified the audience with his virtuoso guitar work.

## Musical comedies brought back

By MINDY FETTERMAN  
Kernel Staff Writer

Nostalgia has taken many forms during its present swing through America. From American Graffiti to Bluegrass pickin' and grinnin', nostalgia has shown its protean character—something for everyone.

Musical comedies have also made their nostalgic moments as Diner's Playhouse's latest production, "I Do! I Do!" proves.

"I DO! I DO!" traces the story of Agnes (Alicia Helen Markarian) and her loving husband Michael (Alex Petrides) from their wedding night, through two children, a near divorce and old age.

The scene of the play is Agnes and Michael's bedroom, all done in pink and blue. Everything, in fact, is pink and blue. The set is practically pink and blue crazy. But the costumes are simple and only require a scarf or a bowtie to show a change in time.

AGNES IS GREAT as a middle aged woman whose husband, now rich and famous and "irresistible to the ladies," was about to divorce her. In "Flaming Agnes," my favorite song of the

play, she declares, "If I'm going to pot, this pot's gona' be hot!" Complete with red strobe lights and pounding drums, Agnes struts around like a two-bit stripper. The audience loved it.

Michael hits on a common emotion with "My Daughter's Marrying an Idiot." He clutches his breast and grabs his head and moans in a most amusing way. "Why can't she pick someone like me?"

The characters are well presented with a touch of humor and sadness which makes the audience reach for their Kleenexes on more than one occasion.

THE ILLUSION OF old age is arranged by an on-stage make-up change. Both Agnes and Michael spray their hair grey, and add old sweaters to an old net-and-fruit hat so they appear aged 20 years. Except for the clouds of grey hair spray floating around the theater for awhile, the change was very effective.

Despite the unsophisticated nostalgic plot, cynics might say sickly sweet, "I Do! I Do!" was great after-dinner entertainment.

At last Diner's Playhouse has finally found something that sits well on a full stomach.

## Eagles concert cancelled

The Eagles concert, scheduled for 8 p.m. April 25 in Memorial Coliseum, has been cancelled by the group because of a conflict in their recording schedule.

The group was under contract with Asylum records to produce an album before they began their eastern tour, which was supposed to begin with the UK performance, according to a Student

Center Board concert committee spokesman.

The contractual agreement with the recording company was not fulfilled and the Eagles have had to cancel the first six concerts on the tour.

Refunds for ticketholders will be given in the Student Center Ballroom Tuesday at 10 a.m. The purchased ticket is needed for the refund.

## memos

**SDX, SOCIETY FOR Professional Journalists** will meet at 7:30 Tuesday in the Maggie Room to elect next year's president. All members are urged to attend. 21A22

**LINKS MEETING,** Tues. April 22, Student Center Rm. 111 at 6:30. All new members urged to come. 21A22

**STUDENT COUNCIL FOR Exceptional Children (SCEC)** general meeting, Wednesday, April 23—7:00 p.m. Dickey Hall, Rm. 125. Very important for all concerned to attend! 21A23

**ATTENTION ANTHRO.** undergraduates there will be an important meeting Mon 4/21 in Lafferty 213 at 4:00. Dr. Collins will speak about grad school. Everyone please come. 18A21

**A LECTURE BY Professor Edward Wasiolek,** University of Chicago, April 21, at 8:15 p.m. in the President's Room, S.C. The public is invited.

**PHI BETA LAMBDA** will hold its next & last meeting of the year this Tuesday, April 22, 1975, at 7 P.M. in Room 140 TEB. Agenda includes election of officers. All members please attend. 18A22

**GRADUATE RECITAL,** Sherman Cline, piano, Memorial Hall, 8:15 p.m. April 22. 18A22

**THE POLITICAL SCIENCE** Undergraduate Advisory Committee office is open 9 a.m., April 21 and 23 for advising. Majors come to 1673 O.T. for advising and to vote for PSUAC representatives. 21A23

**REMINDER: ALPHA LAMBDA DELTA** initiation tonight, April 21—7 p.m., Rm. 309 Student Center. 21A21

**THE EXPANSION COMMITTEE** of Societas Pro Legibus will meet Monday, April 21 at 7:00 p.m. in 1673 O.T. All members must attend. 21A21

**CHEMISTRY SEMINAR — DR. Aerie Patenquill,** UK, on "Classical and Semiclassical Three Atom Studies" at 4 p.m., Tuesday, April 22, in CP 137. 18A22

**UK LINGUISTICS CIRCLE** meeting Monday, April 21st, 4:00 p.m., President's Room, Student Center. Arnold Zwicky, Ohio State University will talk on "Settling on an Underlying Form." 17A21

**BIOLOGICAL SCIENCES SEMINAR** by Dr. Cyril Ponnamperna, University of Maryland — "Chemical Studies on the Origin of Life," 3:30 p.m., Tuesday, April 22, 1975, Room 116, Thomas Hunt Morgan Biological Sciences Building. 18A21

**SPA STUDENTS: GROUP** Pre-registration — Freshmen Sophomores, April 23, 7:30 p.m., Room 353 Dickey Hall; Juniors—Seniors, April 22, 7:30 p.m., Room 353, Dickey Hall. 18A22

# SHARE THE RIDE WITH US THIS VACATION AND GET ON TO A GOOD THING.

Us means Greyhound, and a lot of your fellow students who are already on to a good thing. You leave when you like. Travel comfortably. Arrive refreshed and on time. You'll save money, too, over the increased air fares. Share the ride with us on weekends. Holidays. Anytime. Go Greyhound.

## GREYHOUND SERVICE

TO	ONE-WAY	ROUND-TRIP	YOU CAN LEAVE	YOU ARRIVE
Louisville	5.10	9.70	5:10pm	6:40 pm
Cincinnati	5.10	9.70	5:15 pm	7:40 pm
Knoxville	11.60	22.05	2:15 pm	8:20 pm
Ashland, Ky.	7.50	14.25	2:05 pm	5:35 pm
Hazard, Ky.	8.10	15.40	3:45 pm	8:30 pm

Ask your agent about additional departures and return trips.

E. H. Rogers—Agent

240 N. Limestone

255-4261

**GO GREYHOUND**  
...and leave the driving to us®

**Thornbury's**  
**SCHWINN®**  
**CYCLERIES**

The Bike Experts  
277-1141

140 Moore Drive — 1 Block North Of New Circle On Nicholasville Road Across From Steak And Ale.

We'll Assemble It, Adjust It, And Fit It To You At No Extra Charge!



**Just missed**

UK secondbaseman Mike Moore races to first but fails to beat the throw during the Cats 2-1 victory over Tennessee on Saturday. Senior Ed McCaw, who leads the SEC with an 0.85 ERA, went the distance while allowing the Vols only one unearned run and picking up his sixth win of the year against one defeat.



Kernel staff photo by Ed Geralt



**Check Out Our New Classified Rates!!!**

March 17, 1975

**University Senate Council  
Course-Program Actions, effective: Fall, 1975  
UNLESS OTHERWISE NOTED**

The Senate Council circulates for your approval the following curricular actions listed below. Objections will be accepted from University Senators and faculty members and must be received within ten days of receipt of this notice to the appropriate Council designated below. All other requirements for offering the courses or programs as approved below must be met.

**ACADEMIC COUNCIL FOR THE MEDICAL CENTER:**

**COLLEGE OF MEDICINE:**

**Community Medicine:**

- Course Change:**  
**CM 831 Community Medicine Clerkship** (7)  
 (Change in number, description and prerequisite.)  
**Change to:**  
**CM 841 Community Medicine Clerkship** (7)  
 This course provides each student the opportunity to become involved with the health and medical affairs of a selected Kentucky area under the supervision of a Community Medicine faculty member. Choice is offered the student of taking the five-week experience as a member of a self-selected group of students studying an area from the perspective of Comprehensive Health Planning agencies or health departments, as individual students working from the perspective of selected public health departments, or ambulatory care centers or health maintenance organizations, or in conjunction with selected extramural clinical clerkships.  
 Prereq: Admission to fourth year, College of Medicine.

**COLLEGE OF ALLIED HEALTH PROFESSIONS:**

- Physical Therapy:**  
**NW Courses:**  
**PT 836 Cardio Respiratory Therapy** (1-2)  
 A combined lecture, laboratory series dealing with the mechanics and physiology of normal cardio respiratory functions, medical and surgical pathologies, and physical therapy evaluation and treatment techniques for respiratory problems, cardiac arrhythmias, myocardial infarction rehabilitation, and various cardiac stress tests.  
 Prereq: Admission to the Physical Therapy curriculum.  
**PT 827 Rehabilitation Techniques** (3-4)  
 Prepares the student as a participating member of a prosthetic or orthotic clinic team with emphasis on the role of the physical therapist. Patient evaluation, physical restoration, and vocational training for a variety of long-term illnesses are presented, discussed, demonstrated, and clinical techniques practiced.  
 Prereq: Admission to the Physical Therapy curriculum or consent of the instructor.  
**PT 838 Clinical Clerkship IV** (2)  
 Continuation of PT 837, Clinical Clerkship III. Offered on a pass-fail basis only.  
 Prereq: PT 837.  
**Course Changes:**  
**PT 805 Functional Anatomy I** (2)  
 (Change in title, credits, description and prerequisite.)  
**Change to:**  
**PT 805 Normal Functional Anatomy** (3)  
 A regional study of the normal functional aspects of the neuromusculoskeletal system, including the basic principles of biomechanics and human locomotion.  
 Prereq: ANA 811.  
**PT 806 Functional Anatomy II** (2)  
 (Change in title and description.)  
**Change to:**  
**PT 806 Clinical Functional Anatomy** (2)  
 A regional study of common pathomechanical conditions of the neuromusculoskeletal systems, including the pathomechanics of human motion and an introduction to basic neuromusculoskeletal assessment techniques for such anatomical region.  
 Prereq: PT 805.  
**PT 815 Basic Clinic Skills** (3)  
 (Change in credits, and description.)  
**Change to:**  
**PT 815 Basic Clinic Skills** (4)  
 Theory and techniques of basic physical therapeutic procedures of hydrotherapy, electrotherapy, massage and measurements. Rationale, physiological effects, indications are presented in lecture. Technics are demonstrated and practiced in laboratory.  
 Prereq: Admission to the Physical Therapy curriculum.  
**PT 818 Advanced Clinical Problems** (2)  
 (Change in title, credits, description, prerequisites.)  
**Change to:**  
**PT 181 Clinical Problems** (3-4)  
 Designed to study planning and coordination of hospital and communication services in comprehensive care of patients with major orthopedic, neurological, medical-surgical, and trauma disabilities by the way of lecture, laboratory, staff conferences, seminars, and case presentations.  
 Prereq: Consent of instructor.

- PT 835 Introduction to Physical Therapy** (2)  
 (Change in course number, credits, description, prerequisite.)  
**Change to:**  
**PT 834 Introduction to Physical Therapy** (2)  
 A general orientation to the fields of Physical Therapy and rehabilitation with their history, development, national organizations, and place in patient care. Instruction is given in basic skills including patient handling, range of motion, positioning, draping, and ambulation training. Students perform elementary procedures in the laboratory, observe and perform patient care under supervision. Offered on a pass-fail basis only.  
 Prereq: Admission to the Physical Therapy curriculum or consent of instructor.  
**Clinical:**  
**PT 837 Clinical Clerkship II** (2)  
 (Change in course number and credits.)  
**Change to:**  
**PT 836 Clinical Clerkship II** (1)  
 The clinical participation of the physical therapy students, under supervision, is increased by more intense practice of the basic techniques taught in the classroom. Offered on a pass-fail basis only.  
 Prereq: Admission to the Physical Therapy curriculum.  
**PT 846 Medical Lectures II** (2)  
 (Change in title, credits, and description.)  
**Change to:**  
**PT 846 Medical Lectures I** (1)  
 An introduction to medical procedures, including history, physical examination, laboratory data, and radiographic film. An introduction to basic pharmacology will be presented.  
 Prereq: Admission to the Physical Therapy curriculum.  
**PT 847 Medical Lectures III** (2)  
 (Change in title, credits and prerequisite.)  
**Change to:**  
**PT 847 Medical Lectures II** (1)  
 Musculoskeletal diseases and orthopedic disabilities, anesthesiology, general surgery, chest and cardiac surgery, vascular and plastic surgery are presented.  
 Prereq: Admission to the Physical Therapy curriculum and PT 846.  
**PT 856 Therapeutic Exercise I** (4)  
 (Change in credits, description and lecture-lab ratio.)  
**Change to:**  
**PT 856 Therapeutic Exercise I** (1-2)  
 Includes an overview of therapeutic exercise and its relation to patient management and development of skill in basic therapeutic exercise techniques for strengthening, relaxation, and mobilization.  
 Prereq: Admission to the Physical Therapy curriculum.  
 Lecture: 1 hour; laboratory 2 hours.  
**PT 857 Therapeutic Exercise II** (3-4)  
 (Change in credits, description, and prerequisites.)  
**Change to:**  
**PT 857 Therapeutic Exercise II** (4)  
 Includes the physiological effects of exercise; neurophysiological basis of movement and its relation to treatment of patients with central nervous system deficits; and the development of skill in utilizing therapeutic exercise techniques which emphasize proprioceptive feedback.  
 Prereq: PT 856, admission to the Physical Therapy curriculum.  
**PT 858 Therapeutic Exercise III** (2)  
 (Change in description.)  
**Change to:**  
**PT 858 Therapeutic Exercise III** (2)  
 Includes the normal and abnormal development of movement and its relation to treatment of children with central nervous system deficits.  
 Prereq: Admission to the Physical Therapy curriculum.  
**PT 867 Research Methodology** (3-4)  
 (Change in credits and description.)  
**Change to:**  
**PT 867 Research Methodology** (2)  
 This course will introduce the student to the scientific method of problem solving, basic statistics with emphasis on interpretation and analysis of scientific literature.  
 Prereq: Admission to the Physical Therapy curriculum.  
**PT 868 Research Problems** (3)  
 (Change in credits only.)  
**Change to:**  
**PT 868 Research Problems** (2)  
**PT 898 Independent Study** (1-4)  
 (Change in credits only.)  
**Change to:**  
**PT 898 Independent Study** (1-4)  
 The student will pursue in depth a particular aspect of Physical Therapy or related fields. May be repeated to a maximum of four credits.  
 Prereq: Senior standing or consent of the instructor.  
**Drop Courses:**  
**PT 845 Medical Lectures I** (2)  
**PT 846 Medical Lectures IV** (1)
- and dropping courses to more logically present the information and develop the skills. An eight (8) credit hour summer session is added to reduce student academic pressure during the regular academic year. This extension of the program to the summer session has been under serious consideration for some time by the faculty, but now is also recommended by students. Clinical Internship (PT 839) is now included as part of the graduate requirements.**
- Suggested Professional Curriculum**  
**Third Year**
- Fall Semester:**
- |   |   |
|---|---|
| ANA 801 Histology for Physical Therapy Students | 1 |
| ANA 811 Gross Anatomy                           | 5 |
| ANA 813 Developmental Anatomy                   | 2 |
| PGY 502 Principles of Physiology                | 4 |
| PT 834 Introduction to Physical Therapy         | 2 |
- Spring Semester:**
- |  |   |
|--|---|
| ANA 802 Neuroanatomy for Physical Therapy Students | 2 |
| AHE 854 Biology of Disease                         | 3 |
| AHE 856 Allied Health Colloquium                   | 2 |
| PT 805 Normal Functional Anatomy                   | 3 |
| PT 815 Basic Clinic Skills                         | 4 |
| PT 835 Clinical Clerkship I                        | 1 |
| PT 836 Therapeutic Exercise I                      | 1 |
- Summer Session: (4 week)**
- |                                    |   |
|------------------------------------|---|
| PT 816 Summer Clerkship (optional) | 2 |
|------------------------------------|---|
- Summer Session (8-week)**
- |                                     |   |
|-------------------------------------|---|
| PT 817 Electrophysiological Testing | 2 |
| PT 826 Cardio-respiratory Therapy   | 2 |
| PT 836 Clinical Clerkship II        | 1 |
| PT 846 Medical Lectures I           | 1 |
| PT 867 Research Methodology         | 2 |
- Fourth Year**
- Fall Semester:**
- |  |   |
|--|---|
| AHE 855 Allied Health Colloquium                       | 2 |
| PT 806 Clinical Functional Anatomy                     | 2 |
| PT 807 Introduction to Physical Therapy Administration | 2 |
| PT 827 Rehabilitation Techniques                       | 5 |
| PT 837 Clinical Clerkship III                          | 2 |
| PT 847 Medical Lectures II                             | 1 |
| PT 857 Therapeutic Exercise II                         | 4 |
- Spring Semester:**
- |   |       |
|---|-------|
| CH 841 Community Health Clerkship               | 3     |
| PT 806 Advanced Physical Therapy Administration | 2     |
| PT 818 Clinical Problems                        | 2     |
| PT 838 Clinical Clerkship IV                    | 2     |
| PT 856 Therapeutic Exercise III                 | 2     |
| PT 866 Research Problems                        | (2)   |
| and/or  |       |
| PT 898 Independent Study                        | (1-4) |
- Summer Session (8 week)**
- |                            |   |
|----------------------------|---|
| PT 839 Clinical Internship | 9 |
|----------------------------|---|
- UNDERGRADUATE COUNCIL:  
COLLEGE OF ENGINEERING**
- Department of Civil Engineering:**
- Change in Curriculum:** The Department of Civil Engineering requests approval to change the way in which the English requirements are listed in the Civil Engineering curriculum. The new listing will encourage students to take ENG 203 instead of ENG 102.
- First Semester (Fresh Year) — ENG 101, 102 or 105 Freshman Comp.**  
**First Semester (Soph. Year) — ENG 203 Writing for Business and Industry** (preferred over ENG 102)
- The department recommends that students who are required to complete two semesters of English take English 101, 102 or 105 and 203. Students who elect to take two semesters of freshman English must complete both courses during their freshman year.
- Approval is also requested to change the Civil Engineering curriculum to enable students to take the surveying courses a year earlier.
1. Move CE 100, Plane Surveying from the second semester, sophomore year to the second semester, freshman year.
2. Move CE 215 (Summer Surveying Camp) from the 4 week intercession following the sophomore year to the 4 week intercession following the freshman year.
- The changes in English and Surveying are coupled and further require moving the General Studies course from the first semester to the second semester of the sophomore year.
- Approval is requested to add some statistics courses to the list of courses acceptable as the Math Elective in the Civil Engineering curriculum. The additional courses are STA 421, STA 423, and STA 482. These courses are comparable in level of sophistication and applicability to Civil Engineering to the courses presently accepted.
- GRADUATE COUNCIL  
COLLEGE OF AGRICULTURE**
- Department of Horticulture**
- Course Change:**  
**HOR 525 Plant Propagation** (3)  
 (Change in number title, description, and prerequisite.)  
**Change to:**  
**HOR 625 Advanced Plant Propagation** (3)  
 A detailed study of the principles and methods of propagating horticultural crops by seedling, cuttage, graftage, tissue culture and miscellaneous techniques.  
 Prereq: HOR 350 or equivalent, BOT 501 (BOT 521 recommended.)

**UNDERGRADUATE COUNCIL:  
COLLEGE OF ALLIED HEALTH PROFESSIONS**

**Department of Physical Therapy**  
**Curriculum Change: for Third and Fourth Years**

The faculty of the College of Allied Health Professions and the Undergraduate Council have approved and submit for your approval changes in the requirements and content in the Physical Therapy curriculum.

The majority of changes consist of shifting course content to other courses, addition of new courses, change of emphasis in content areas,

**Blood Plasma Donor Center**

313 E. Short Street  
Monday - Friday  
9:30 a.m. - 4:45 p.m.


**Earn \$\$\$ Weekly**

252-5586

First Time Donors Please  
Come In Before 3:00 p.m.

**BOARD OF STUDENT PUBLICATIONS**  
for  
**1975 — 1976**

The Office Of The Vice President For Student Affairs Is Now Accepting Student Applications For Membership On The Board Of Student Publications. Come And Participate In An Experiment With The Kyian, Which Will Be In Magazine Format Next Year.



Applications Forms are Available At The Office Of Vice President For Student Affairs, Room 529 Patterson Office Tower, Or Will Be Mailed To You If You Call The Office, 257-1911. Deadline For Applying Is **Today**, April 21, 5:00 p.m.

A New Experiment

Stock up now at this  
stock Reduction

**Sale**

**MOVED TO SPECIAL MEDIA**

**20% OFF**

PIPES PAPERS CLIPS  
WATERBEDS POSTERS CARDS  
CLOTHES BEDSPREADS

Hours 12-5PM

157 S Limestone

**the Store**

## A lot at steak

### White team wins annual spring finale 8-7

By WALTER HIXSON  
Kernel Staff Writer

Fifteen fumbles and a pile of beans. So it was at the annual Blue-White intrasquad football game held Saturday night at Commonwealth Stadium before 17,000 fans. A two-point conversion run with 3:08 remaining by sophomore quarterback Derek Ramsey gave the White's an 8-7 win and the right to eat steak for dinner tonight.

**ASIDE FROM THE** chance to impress the coaches in game action, the players were further motivated by coach Fran Curci who decided the losers would eat hot dogs and beans while the winners should feast on steak. "I was hoping they (White's) would kick" the extra point said Curci who viewed the game from the pressbox. "then they'd all have to eat beans."

The drive stopping fumbles, three by senior All-American candidate Sonny Collins, prompted that statement from Curci.

"**THAT WAS ONE** of the sloppiest games I've ever seen," he said. "They were just running down the field and dropping the football."

Sophomore linebacker Mike Martin pounced on a Collins fumble at the White 25 yard line to set up the only Blue score.

Joe Dipre, who gained 44 yards in 11 carries, slammed in from a yard out and John Pierce added the extra point for a 7-0 Blue lead with 6:41 left in the first quarter.

**THE COMEDY OF** errors ensued with the White's finally capitalizing late in the game.

With Ramsey at the helm, they marched 63 yards for the score in the only sustained drive in the game.

Ramsey mixed runs by Collins and senior Steve Compassi with sharp passes, mostly to sophomore Randy Burke, who hauled in four aerials for 91 yards. The

## McCaw leads Kentucky in two game split with UT

The strong right arm of senior Ed McCaw led the Wildcat baseball team to a split of a two game series with Conference power Tennessee this weekend at the Shively Sports Center.

McCaw (6-1), who leads the SEC with an 0.85 ERA, went the distance Saturday and gave up one unearned run in the fourth as the Vols dropped their first conference game of the year, 2-1.

**THE CATS TOOK** a 1-0 lead in the first and then scored the winning run in the ninth when designated hitter Herbie Hammond, who had three hits on the

drive climaxed when Compassi dove the last yard.

**WITH VISIONS OF** a simmering T-Bone in their eyes, the White's shunned a tie and lined up for the two point conversion. Looking for receivers and finding none, Ramsey reversed his field and galloped in for the winning score.

The Blue attack, led by Cliff Hite, who has the inside track on next year's quarterback job, was for the most part ineffective. Hite connected on only three of 13 pass attempts and ran for 29 yards in 16 carries.

day, singled with two outs to drive in Mike Moore from second.

But, Kentucky lost the second game 5-2, on Sunday, as Mike Howard (now 2-3) gave up four runs in six innings before Tim Gravin came on and finished in relief.

The Vols jumped out to an early 4-0 lead on the strength of Rick Honeycutt's two run homer in the second. Honeycutt, who is the leading hitter in the SEC, had picked up Saturday's loss.

Mark Cummins went eight innings and picked up the win for Tennessee, but needed relief from Jack Whittlesey.

**UK, NOW** 16-16 (.65 in the SEC), also beat Kentucky State 13-11 on Friday as the Cats pounded out five runs in each of the first two innings.

During the early outburst Koenen contributed a grand slam home run in the first and Saunders added a three run shot in the second.

Jerry Frantz (1-2), who picked up the win, went eight innings and was relieved by John Crabtree.

Injured firstbaseman, Marv Foley, who suffered a hip pointer last week at Bellarmine, did not see action over the weekend and is not expected to play again until at least Thursday against Morehead.

It was reported yesterday that Foley is receiving sound treatment on his hip and is recovering fine.

**UK WILL NEXT** travel to Cincinnati on Tuesday for a meeting with the Bearcats. Steve Pettitt will be the Wildcat starter.

GENERAL CINEMA CORPORATION

TURLAND MALL  
**Cinema**  
6100

Held Over! 6th Week!  
**AGATHA CHRISTIE'S**  
**"MURDER ON THE ORIENT EXPRESS"**

Academy Award Winner — Best Supporting Actress

PG Times: 2:00—4:45—7:25—9:45

FAYETTE MALL  
**Cinema I**  
272-0002  
KNOXVILLE NEW CIRCLE EDS

Winner Of 4 Academy Awards Incl. Best Picture

★★★★★ HIGHEST RATING

The Godfather **PART II**

R Sun.—Thur. At: 1:00—4:30—8:00

FAYETTE MALL  
**Cinema II**  
272-0002  
KNOXVILLE NEW CIRCLE EDS

HELD OVER!

warren beatty  
julie christie · goldie hawn

SHARPOO

R Sun.—Thur. At: 2:20—4:55—7:35—9:45

ALL CINEMAS—BARGAIN MATS. EVERY DAY TIL 2:30P.M.—\$1.25

**ORSON WELLES**


This Week At  
The Student  
Center Theatre

**TONIGHT**

6:30 p.m. & 9:00 p.m.

**CITIZEN KANE (1941)**

Directed By Orson Welles



UK Theatre  
Presents

The Time Of Your Life  
By William Saroyan

April 23-26

Guignol Theatre  
Fine Arts Building  
Rose St.  
Curtain: 8 p.m. Nightly  
Saturday Matinee: 4:30 p.m.  
Reservations: 258-2680

# classifieds

## PERSONALS

**CATHY, I'VE BEEN** watching you Honey, Pieman.

**CINDY, WHO'S NEXT?**

**TAMARA GARTRELL**, come to me, you sweet thing!

**MARtha, WHO DO** you like best?

**TOO BAD GIRLS**, better luck next week.

**KAREN, LOVE YOUR** hair, Mike.

**DR. S. & COMO** pseudo descender la montana? Hace Friol A.M.

**ANN MARIE K.** happy late birthday — September 1973.

**MIKE: LET'S GET** together again, Betty.

**ATTENTION CS PEOPLE**, party Sat. afternoon at Larry's.

**ANN B., I'M** free, available, hot, luscious, experienced, Dana.

**FLO, I LOVE** your bod. The Drunk.

**RODOLPH, I HAVE** a bet for you, Your Bookie.

**SELECTIONS ARE** a spectacle of comic nihilism.

**RICHARD — YOU ARE** expected for lunch on Monday.

**HAPPY BIRTHDAY** Bev Mertz! From the Teatthes.

**ANN, YOUR TENNIS** victory days are numbered, Larry.

**RICHARD GRAEF: UK'S** true electric warrior — Marc Bolan.

**ALEX C. YOU** gorgeous gumba, I desire you body!

**KIMBERLY CORUM — HAVE** fun this weekend, love, Don.

**SOUTHWESTERN IS NUMBER** one. Who's Varsity?

**SECRET ADMIRER . . . CRAVE** your body too! Bill S.

**ROCKY & GRIKUDE DUB** three Boris. Love Natasha.

**GOOD LUCK, MIKE** McLaughlin, next Senator at large.

**GINNY K — CALL** me! Bill.

**CUCUMBER KID: FRIDAY** is coming!! "Fella ship".

**LORRETTA — I LOVE** your new hair style. Goldsboro.

**STEVE — THANKS** FOR apologizing sweetie. You're forgiven, Suzanne.

**ALICE B. TOKLAS —** this weekend! — Signed, Highflying.

**JESUS CHRIST IS** God's only provision for man's sin.

**CHI O'S SAY** way to go Harvey!

**HEY GAIL!** The soap works! Thanks, Greg.

**MARtha ANN, YOU** can take me for Cake anytime.

**JUDI, I LUV U —** Your Sly Fox.

**SALLY JO — I** love your lungs.

**ROB MILLER, did** your tootsie roll?

**ROBEY — I LOVE** you, Judy H.

**NED BOY — YOU** were great! Carol.

**RONALDE — ITALIAN** Jews do it better — G.C.

**PAM WHITE, WHICH "E"** tonight? How CLEVVUH, EVVUH: shevuhs up my backzone — Chesty Man.

**DONNA, LOVE YOUR** eyes, Mike.

**CORVAIR AND FALCON+LOVERS** of the world unite . . . soon!

**GOD IS DEAD —** Adolf!

**ADOLF IS DEAD —** God!!

**CARIN, YOU'VE** GOT a nice delivery, Coach.

**PARTY AT 4** Saturday, Coach and Superstars.

**PERSONAL: MIKE P.** Like your moustache, Dimples.

**MIKE B., WHAT** time did you get home Sunday?

**GILLY-TODD — HOW** are the breaks?

**KATHY Z., HERE** it is — I love you.

**RED-BLOUSED, BLACK HAIR**ED GIRL desires different meeting time M.I.K.

**JUDI AND TOTO —** too — Next Sunday! Bill on the hill.

**ANTHONY, I WILL** love you forever and ever — A.M.

**DAD — NO MATTER** what — You are beautiful — Mom.

**LINDA NORRIS —** HAPPY birthday my lovely Linda, Buckley.

**S.A.E. PIGGY —** I need your body, Margaret Riner.

**ALLISON — HOW** is your boshed knee, Secret Admirer.

**URCHIN BEAR: WHAT** are ya doing up in the tree? Wurch.

**BURNETTE, BLOW** IT out your shorts.

**POOT WADDLE —** HAPPY birthday — love, Charley.

**TIM, HOPE YOUR** 20th is the happiest, G.A.

**JIMMY LYLE: MAY** I wear that hat sometimes?

**SIGMA NU'S, THANKS** for the good time, Chio's.

**LARRY N. — I'M** dying for a dat — V.B.

**JO, WATCH OUT!** The man with the golden gun.

**CHARLES HURST —** WVLK will call Thurs. Bertha Buff and Motormouth.

**ROADRUNNER — I** LOVE you, Your Brave Little Chickenheart.

**PIE IN THE** eye and 21 B. Thanks, Fred.

**JULIE — YOU** CAN really bump — The Shoes.

**ATTENTION — LINDEN** WALK 4 have delayed the experience.

**BIG MAN OF BIT —** You're groovy! Christie.

**MY GENIUS SUPERMAN,** I love you eternally, NCM.

**T.J.C. YOU'RE** BEING a real baby, Merlin.

**MARK MORRIS —** WEDNESDAY night at Singles — Secret Admirer.

**OPHELIA — I WANT** your chockos Lovingly, Rod Stewart.

**EDNA GALE, YOU'RE** my everything, Earl.

**DOLLY — I CRAVE** your beautiful body! An admirer.

**"I'M NO MIDGE!"** said JD, Don, and Mike.

**CHRISTIE — STOP** picking on a nose! Brest.

**BARBARA NEWCOMB, SAVE** me a place — in line? Admirer.

**STEPH: THE MEAL** and company were great!

**PORNO: HOPE** YOU enjoyed the Gorge, Mayor La.

**HIGBYMILLVILLE** AND MOUNTAIN Oyster — Thanks for great gig.

**PAT D. — ANOTHER** international treat on the way — Chuckles.

**SUE COME TO N.C.** party Friday, John.

**THE BAKER SPECIALTY** is sweet peas.

**JOHN T. WHAT** about the 19th? Guess Who?

**JOHN IRVIN I** love you! Your Hobbit.

**BUD: YOU'RE** A good bud, Little Bud.

**KRAJNAK: MESSED** OVER? Love, Ra-chers.

**CEC: RATHER** BE an Oscar Meyer Weiner? Dave.

**Laura, TOO** bad your last name isn't Heister.

**BIG OTIS** is watching.

**SANDY, I** LOVE you, Yours and Only Yours.

**YING-YANG "SEZ"** '35 has third degree "burns".

**A.K. — C.H.H. —** Lambrusco's and kiltifying. Want to? Risen Dough.

**C'MON UK GIRLS,** Get with it, It's here! P.R.'S, K.B.'S, GOOD luck in drill meet.

**D.K.K. — PLEASE** FORGIVE me and come back — Puffy Chin.

**TRENT: DO YOU** ever change your pants? — Frar.

**B.B. — WHERE** SHOULD I sent your phone calls!! Ziggy.

**LEXINGTON POLICE** thanks 411 Aylesford for the thanks.

**MILLER — THANKS** FOR taking out the trash! "Buddies" (Apt 6)".

**ELENN M., ONLY** thirteen to four, Love Robert.

**GREAT SPECKLED** HOOTY still high — be here now.

**DORRYCOTT: KEEP** THOSE skates tap dancing, Carol, Sharon.

**V.R.H. 143 ALWAYS,** C.A.B.

**AKC COCKER** Spaniel, black, 4 months, female, semi-trained, 252-5453. 16A18

**1971 HONDA** CL100 with new helmet. Very good condition. Must see! \$350. 272-6462. BA21

**COMPONENT SET** AM-FM receiver, amplifier, 8-track tape player, twin speakers. \$100. 269-1542. 10A23

**GIBSON LES PAUL** and VW spare tire. Best offer, must sell. 254-1828. 16A22

**40W-6 SONY** receiver, 2 JBL's, excellent condition. Call 255-8294 after 2:30. 16A22

**COLOR-TV-CONSOLE** in need of repair — \$40 or best offer. 269-2268. 18A22

**TRIUMPH TR6,** 1971, low mileage AM-FM radio. Dunlop radials. 278-5084 after 6. 18A22

**COUCH: DARK** GREEN vinyl; hide-a-bed; good condition; \$20. 278-0269. 18A24

**RICHEST-FIELD** TELESCOPE. Aero-Ektar f-6 2 1/2". Equatorial mount, tripod. 147 Forest Avenue.

**LABRADOR** RETRIEVER pups, AKC, papers, shots, wormed, ready to go. \$100. 266-4273. 18A24

**49 FIREBIRD,** low mileage, low price — \$1100. 257-3891 before 5. after 272-8518. 16A22

**BASS AMP** 300 Peavey two cabinets (JBL) 2 1/2", 1-18", \$600. 278-6476. 16A22

**FOR RENT, SUMMER,** three bedroom house, furnished and equipped, shaded lot. 255-3081. 21A23

**ONE ROOM EFFICIENCY,** separate bath, Off street parking. Near UK. Christian preferred. 259-0283. 18A22

**SUBLET: FOR SUMMER.** Furnished room. Private bath. \$60. Close to campus. 253-0246. 18A22

**SUMMER LEASE** BY Mon. April 21st. 3 bedroom. 374 Aylesford, 252-6330. 18A22

**SUBLEASE APT. FOR** summer. Central air, completely furnished, windows, pool, tennis courts, laundry, dishwasher, Day, 277-1189. Evening, 269-3447. 18A24

**FURNISHED APARTMENT** to sublet for summer. Utilities paid. Evenings, 253-3581. 18A24

**FURNISHED APARTMENTS.** Close to campus. Summer rates available. Call 255-6521. 18A24

**SUBLEASE APARTMENT —** SUMMER. Available May 10th, 332 Aylesford, \$95 + one-third utilities. 18A24

**HOUSE THREE** BEDROOMS, two baths. Stove, refrigerator, washing machine, large yard. 277-8059. 17A23

**APARTMENTS AND** rooms for rent, summer and fall. Close to UK, reduced summer rates. 269-1876. 1A21

**EXTRA LARGE** bedroom and living room completely furnished, central air and heat, laundry facilities. Walking distance to UK. Utilities included. Deposit will hold apartment for fall semester. Summer apartments available, lower rates. Ph. 266-8442 after 5:30 p.m. weekdays. 1A28

**2 BEDROOM FURNISHED** mobile home near campus, \$135 month, utilities paid, 254-1411. 16A22

**ROOMS, \$25 UP.** Apartments, \$95 up. House, \$225. Also, fall rentals, 278-6725. 16A22

**SUMMER ROOMS,** \$50 plus utilities, 1 min. walk to campus. 252-7350. 15A21

**SUBLET: FOR SUMMER,** nice efficiency apartment close to campus. Call 254-2125. 15A21

**FURNISHED ONE** bedroom apartment to sublet for summer. Nice. Evenings, 266-3065. 10A23

**ABORTION, BIRTH** control information and referral. No fee. Up to 24 weeks. General anesthesia. Vasectomy, tubal ligation also available. Free pregnancy test. Call PCS, non-profit. (202) 298-7995. 1M2

## MISC.

**OVERSEAS JOBS —** Australia, Europe, South America, Africa. Students all professions and occupations \$700 to \$3,000 monthly. Expenses paid, overtime, sightseeing. Free information. Transworld Research Dept. F-2, Box 603, Corte Madera, Calif. 94925. 21A25

**OAK'S ROCKCASTLE** CANOEING-Survival Trip. May 12-15. Intensive instruction followed by two days of whitewater under survival conditions. Lose your "final's fat." Outdoor Adventures of Kentucky, Inc. Intensity, discipline, purpose. Phone 276-1356. 18A24

**FOR THE TIME** of Your Life, telephone 258-2680. UK Theatre, April 23-26. 17A25

**OUTDOOR ADVENTURES** of Kentucky (OAK) Survival. Canoeing, climbing instruction. Canoe rentals. 276-1356. 27A30.

**ABORTION, FREE** literature and information. Know the facts. Contact Right to Life of Central Kentucky, 111 East Short St., 252-3721. 4W2

## WANTED

**STUDENT TO LIVE** in summer and/or 1975 school year. Room and board for babysitting. Two young children. Country house two miles from Bellfline. Private quarters, references required. 278-4992. 21A22

**PERSON WITH** the herbal essence V.W. please contact Liz. 259-2082. 21A23

**SOUND SYSTEM** NEEDED for march in Frankfort/Red River. Call 253-3241. 18A22

**FEMALE ROOMMATE** NEEDED — two bedrooms near campus, \$60 month, 253-3545 after 6. 18A24

**FEMALE: FREE** ROOM, board for part-time care of woman in wheel chair. 266-5691. 18A24

**MALE ROOMMATE.** One-bedroom furnished. \$62.80, half electricity or relocate. Greg. 278-6752 or 272-7122. 18A24

**THREE OR FOUR** bedroom house for fall semester. Near UK. Call 258-4037 after 7 p.m. 15A21

**LARGE FURNISHED** house or apartment needed for fall semester. John. 258-2135 or 257-3526. 15A21

## BUSINESS OPPORTUNITY

**ADDRESS ENVELOPES** at home. \$800 per month, possible. Offer details, send 50 cents (refundable) to: Triple "S", 699-R18, Highway 138, Pinion Hills, CA 92372. 10A23

## HELP WANTED

**TENNIS INSTRUCTOR** applicants — need good background in playing and teaching. Salary averaging \$150-\$300 per week. Call (703) 548-2064 or send resume to: 203 South Union Street, Alexandria, VA 22314. 21A21

**STILL IN DOUBT** about your future? If you are, it might not be too late. Penn Mutual Life Insurance Company will be interviewing at the Placement Center Thursday, April 24, between 12:00-3:00 p.m. persons who are interested in life insurance as a career. What have you got to lose? 17A23

**EXPERIENCED FLORAL** DESIGNER. Summer work only. Send resume to 3033 Breckinridge Lane, Louisville, Ky. 40220. 17A30

**ADDRESS ENVELOPES** at home. \$800 per month, possible. See ad under Business opportunities. Triple "S", 10A23

**COURIER JOURNAL & Louisville Times** will hold interviews at University Placement Office for summer employment, Thursday, April 24, from 9:30 a.m. to 5 p.m. These positions will be in the sales field. Will require travel in Kentucky and Southern Indiana. Salary: \$100 per week, plus expenses. No commission selling. 16A23

## FOR SALE

**ELECTROPHONIC STEREO** SYSTEM: includes Garrard turntable, AM-FM radio. \$100. Jim, 254-3175. 21A23

**1972 AKAI REEL** to reel tape player. Like new. 885-9673. 21A23

**ARNOLD PALMER SIGNATURE** clubs, complete plus bag, cart, covers. Like new, \$130. 269-6411. 21A23

**MOTORCYCLE, YAMAHA** TX750cc., 1973, low miles, custom paint and handlebars. Call 278-7697. 21A25

**FOR SALE: AUSTIN** Healey Sprite, convertible. Will bargain, call: 269-5048. 21A25

**KALKHOFF 10** SPEED bike. Also compact stereo system with 8 track. Call 277-5943. 16A22

**KUSTOM BASS** cabinets, 2 2 1/2" with covers. \$125 each, \$225 both. 278-3562. 16A22

**TUXEDOS** OF ALL types, \$10; new evening gowns \$25-\$50; 1940's and '50's clothing; all types sweaters. Stop by J&J Used Clothing, 502 East 7th St. between 10 a.m. and 5 p.m. 16A22

**40 ACRES, MORE** or less, in Massillon County. Beautiful land much like the Gorge; half hillable, good house, electricity, two creeks, huge trees. \$3,500. Call 254-8202 or 269-3551. 16A22

**KAWASAKI** 350, good condition, book value \$75. Take best offer. 269-4593. 709 Cramer. 16A22

**1963 PORSCHE** COUPE, white/red, \$2600. Also classic 1957 Porsche Speedster. 252-6887 (evenings). 15A21

**1968 PONTIAC** LEMANS, excellent condition, air conditioning, power steering, \$900. 272-7369. 15A21

**COMPONENT SET —** 8-track and cassette recorders, turntable, AM-FM receiver and speakers. 252-2837. 15A21

**MATTRESS, BOX** SPRINGS and frame (twin-size): very reasonable. 258-8934 or 253-2869 after 9 p.m. 15A21

**1968 CL125A** HONDA motorcycle, good tires, just tuned. \$250. 266-7747 after 5 p.m. 15A21

**ANTIQUE REFRIGERATOR** — one of first by General Electric. Best offer! 252-2837. 15A21

**PLANTS FOR SALE.** Pooch's Corner at Jefferson Viaduct — High. 10 per cent student discount. 15A25

**INTERNATIONAL TRAVELLALL** zlamblance) 304V-8, many extras, great camper. 17A21

**DYNA 100 WATT** amplifier. Like new. Call 254-0173 after 5. 17A23

**1971 V.W. GOOD** condition, \$1000. Call 253-2770. 16A23

**DATSUN 240-Z** 1973, 95cc. miles, silver grey exterior, black interior. Call 257-1095. 8A21

**U.S. DIVERS,** 1974, 712 cu. ft., tank and bac pac, used twice. Call 257-1095. 8A21

**MOTHER'S DAY** gifts: beautiful hand-made quilts. From \$200. 7-2377; evenings 7-1295. 9M2

## LOST

**LOST — BEHIND** MCVHEY — a silver spoon ring engraved with "M" on front and "Nellie" on inside. Call 257-3710. 18A22

**WHITE PERSIAN** CAT. Village Dr. area. Unstable college student's pet. Reward. 253-3555. 18A24

## FOR RENT

**UNFURNISHED** EFFICIENCY with private bath for student within walking distance of UK. Can occupy anytime after June 1. Call 277-2312. 21A21

**UNFURNISHED** APT. NEAR campus. Available mid-May. Five rooms, garage, ground floor. Prefer mature individual or couple. Call 278-8706 between 1:00 and 4:00. 21A25


In Honor of "TOMMY"

# PINBALL TOURNNEY

TO BE HELD AT STINGLES, MONDAY & TUESDAY NIGHT  
REGISTRATION BEGINS AFTER 3 p.m. TODAY  
TOURNNEY SPONSORED BY  
CHEVY CHASE CINEMA AND WKQQ

Tuesday Nite  
TOUCH OF FUNK

Thursday Nite  
JOPPA



CHEVY CHASE 21 AND OVER



# Student Center Board CAMPUS CALENDAR

## IN CONCERT

### NOTICE:

**THE  
EAGLES  
CONCERT  
CANCELLED**

**"6 for 6"  
ALIZA  
NGONO  
with Abadingi  
African Folk Music  
Wed. April 23 8p.m.  
Memorial Hall  
\$2 admission**

### THIS WEEK AT THE

- 4-23 Touch of Evil
- 4-24 The Trial
- 4-25 Magical Mystery Tour  
Firesign Funnies
- 4-26 Magical Mystery Tour  
Firesign Funnies
- 4-27 Firesign Funnies

## Monday 21

- Recital — G. Scott, Memorial Hall, 8:15 p.m.
- SCB Movie — "Citizen Kane", SC Theatre, 6:30 p.m. and 9:00 p.m. Adm. \$.75.
- Lecture — "Dostoevsky, Faulkner, and Camus" Prof. Wasiolek, Univ. of Chicago. Pres. Rm., SC, 8:15 p.m.

## Tuesday 22

- SCB Movie — "Lady from Shanghai", SC Theatre, 6:30 p.m. and 9:00 p.m. Adm. \$.75.
- Recital — S. Cline, piano, Memorial Hall, 8:15 p.m.
- University Chorus, S. Holyrod, director, Memorial Hall, 8:15 p.m.
- Readers Theatre — Greek Myths for Students, Amphitheatre behind Memorial Hall, 3:00-4:00 p.m.
- Free Theosophical Study and Discussion Series, Howard Johnson Motor Lodge, Nicholasville Rd., 7:30 p.m. Starting April 22nd and every Tuesday thereafter.
- Chem. Dept. Seminar: "Classical and Semiclassical Studies of Rotational Excitation in the System Ar & N<sub>2</sub>" Dr. M. Pattengill, Rm. 137, CP, 4:00 p.m.
- Lecture — "Oil and Politics in the Middle East and Their Impact on the Failure of Kissinger's Shuttle Diplomacy" Dr. F. Pollack, Yeshiva Univ. Rm. 206, SC, 1:30 p.m.

## Wednesday 23

- Theatre Arts — "The Time of Your Life", Guignol Theatre, Fine Arts Bldg., 8:00 p.m. Adm. \$1.50 students, \$2.50 faculty and public.
- SCB "Six for Six" Series — Aliza Ngoni with Abadingi, Memorial Hall, 8:00 p.m. Adm. \$2.00.
- SCB Movie — "Touch of Evil", SC Theatre, 6:30 p.m. and 9:00 p.m. Adm. \$.75.

## Thursday 24

- SCB Movie — "The Trial", SC Theatre, 6:30 p.m. and 9:00 p.m. Adm. \$.75.
- Theatre Arts — "The Time of Your Life", Guignol Theatre, Fine Arts Bldg., 8:00 p.m. Adm. \$1.50 students, \$2.50 faculty and public.
- Lecture — "The Problem of Cultural Complexity and Ego Development", Dr. Shodtbeck, Univ. of Chicago. Rm. 102, CP, 8:00 p.m.

- Readers Theatre — Greek Myths for Students, Amphitheatre behind Memorial Hall, 3:00-4:00 p.m.

- University Orchestra, P. Miller, conductor, Memorial Hall, 8:15 p.m.

## Friday 25

- Concert — Eagles and Emmy Lou Harris, Memorial Coliseum, 8:00 p.m. Adm. \$3.00, \$3.50, \$4.00, \$5.00.
- Theatre Arts — "The Time of Your Life", Guignol Theatre, Fine Arts Bldg., 8:00 p.m. Adm. \$2.00 students, \$3.00 faculty and public.
- UK Baseball — UK vs. Georgia, Shively Sports Center, 1:30 p.m.
- Recital — G. Thornbury, organ, Memorial Hall, 8:15 p.m.
- Lecture — "Studies on Sex-Role Identity" Dr. Stodtbeck, Univ. of Chicago. Rm. 213, Kastle Hall, 1:00 p.m.

- SCB Movie — "Magical Myster Tour" and "Firesign Funnies", SC Theatre, 7:00 p.m. and 10:00 p.m. Adm. \$1.00.

## Saturday 26

- SCB Movie — "Magical Mystery Tour" and "Firesign Funnies", SC Theatre, 7:00 p.m. and 10:00 p.m. Adm. \$1.00.
- Theatre Arts — "The Time of Your Life", Guignol Theatre, Fine Arts Bldg., 4:30 p.m. Adm. \$1.50 students, \$2.50 faculty and public and 8:00 p.m. Adm. \$2.00 students, \$3.00 faculty and public.
- UK Baseball — UK vs. Georgia, Shively Sports Center, 1:30 p.m.
- UK Rugby — UK vs. Univ. of Tenn. Shively Sports Center Rugby Field, 2:00 p.m.
- University Symphonic Band, H. Clarke, director, 8:15 p.m.
- "Lady Kats" Track & Field — UK at Becky Boone Relays — EKV, Richmond, Ky.

## Sunday 27

- Solemn High Mass, St. Augustine's Chapel, Canterbury Fellowship, 10:30 a.m.
- UK Rugby — UK vs. Queen City RFC, Shively Sports Center, 2:00 p.m.
- SCB Movie — "Fireside Funnies", SC Theatre, 6:30 p.m. and 9:00 p.m. Adm. \$.75.

## Monday 28

- UK Baseball — UK vs. MSU, Shively Sports Center, 1:30 p.m.
- Exhibition — Group Graduate Show of work by UK Art Dept. Graduate Students, Barnhart Gallery, Reynolds Bldg. No. 1, 9:00 a.m. - 5:00 p.m. daily, April 28 - May 9. Reception April 28th, 8:00 p.m.
- Recital — William Stanley, saxophone, Memorial Hall, 8:15 p.m.

## Tuesday 29

- Recital — University Choristers, S. Holroyd, director, Memorial Hall, 8:15 p.m.

## Wednesday 30

- UK Baseball — UK vs. EKV, Shively Sports Center, 3:00 p.m.
- SCB Movie — "Breathless", SC Theatre, 6:30 p.m. and 9:00 p.m. Adm. \$.75.

**The Student Center  
Board Congratulates  
the 1975-76 Student  
Government Members  
and Officers Elect**

—ADVERTISEMENT—