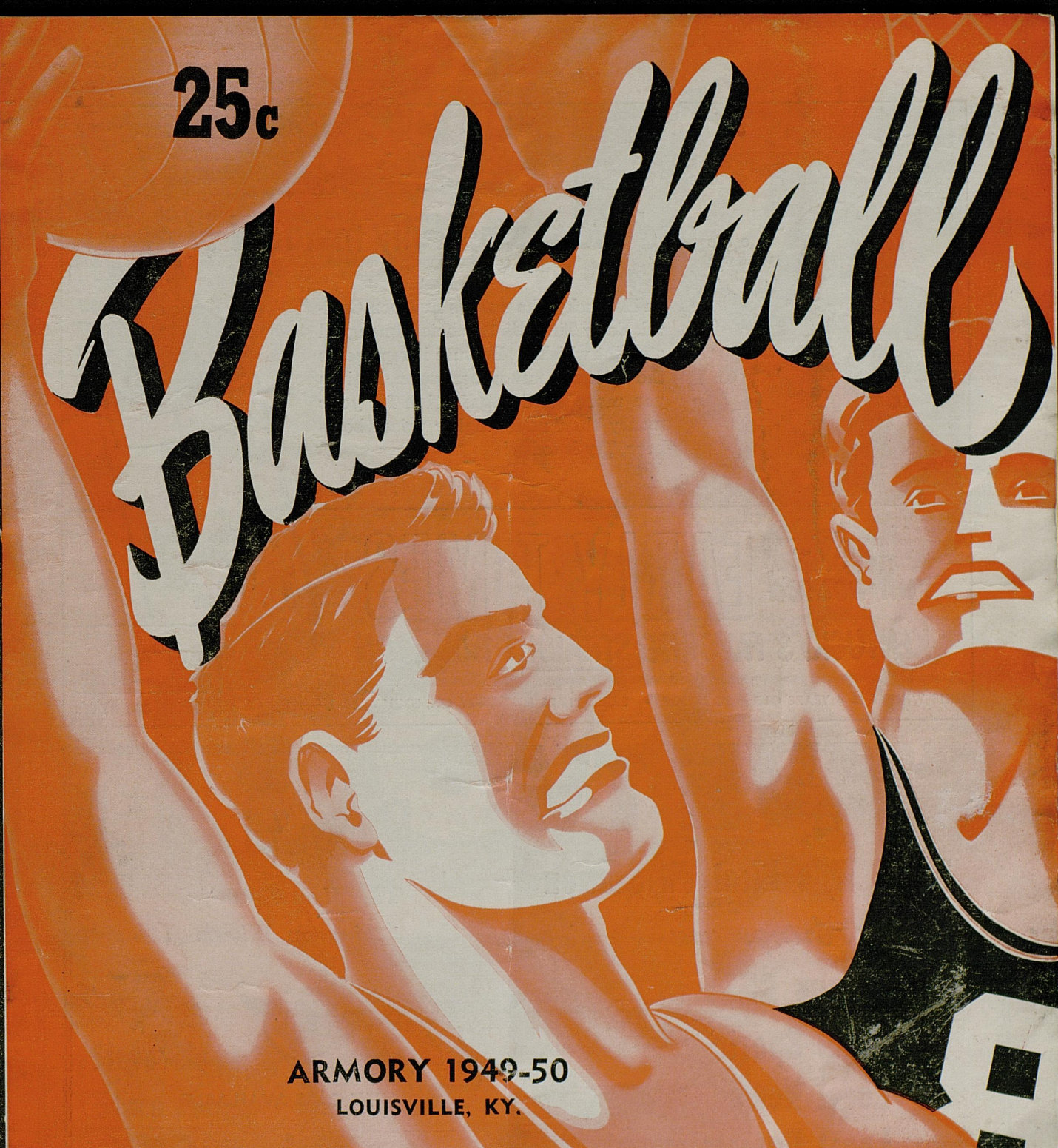


25c

Basketball



ARMORY 1949-50
LOUISVILLE, KY.

You'll Have Much More Fun This Winter . . . if you're a good Dancer!



450 S. 3RD ST.

ENROLL TODAY AT
ARTHUR MURRAY'S

For Appointments
Phone CL 2738

Arthur Murray

2 FOR 1
RATES NOW
IN EFFECT

Open from 10 A.M. to 10 P.M.
COR. 3RD & WALNUT

Every Ounce a Man's Whisky!

...and every drop fully matured!



In Kentucky, the world's Bourbon Capital, Early Times is 1st choice among all straight whiskies. Because it represents the peak of bourbon perfection, it gives you more solid satisfaction for your money than many higher priced bourbons. Try it today!



Hearty -
Full-bodied

EARLYTIMES

KENTUCKY'S FAVORITE STRAIGHT BOURBON

THIS WHISKY IS 4 YEARS OLD — 90 PROOF • EARLY TIMES DISTILLERY CO., LOUISVILLE 1, KENTUCKY

**NOW \$4.49
FIFTH**

Also Pints and Halves

WAVE-TV

Kentucky's First TV Station

brings you

THE BEST IN

Local Sports

Local News

Local Entertainment

plus

TOPNOTCH NETWORK SHOWS

(NBC . CBS . ABC . DUMONT)

WAVE-TV

CHANNEL 5

SEE "SNOW WHITE and the SEVEN DWARFS" on ICE at the Armory April 8 thru 16.

Pontiac

*The Most Beautiful
thing on Wheels*



NEW CARS AVAILABLE

GOOD-WILL USED CARS

COOKE PONTIAC CO.

5th and York

SHIRLEY WINKLER, Manager

Louisville Hockey Club

Incorporated

ARMORY — LOUISVILLE

IRVING WAYNE..... *President and Treasurer*
WALTER WAGNER..... *Secretary*
HERMAN PENN..... *Assistant Treasurer*
F. A. McDONOUGH, JR..... *Publicity Director*
RUDOLPH "Rudy" PILOUS..... *Coach*
DR. JOSEPH M. FREHLING..... *Team Physician*
FRANK BIDACK..... *Trainer*
HENRY DENZER, GEORGE McKEOWN *Timers*
MILT METZ, TOM BROOKS..... *Announcers*

STANLEY WEATHERBY
Superintendent of Armory and Arena Ice



CLUB HEADQUARTERS
Armory 525 West Walnut Street
CLay 2768 — Louisville, Ky.



HOCKEY

*The South's Finest
Liquor Store*

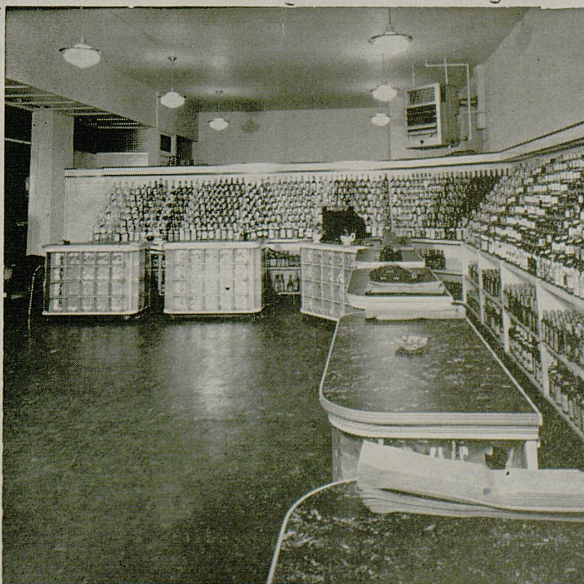
State Liquor Store No. 1

501 W. Walnut

*Always A Complete
Line of the Finest*

WINES • WHISKIES
CORDIALS

JERRY ROSENBERG
C. ROSENBERG



State Liquor Store No. 2

418½ W. Walnut

WAbash 9342

*Always A Complete
Line of the Finest*
WINES • WHISKIES
CORDIALS

A Full Line of Bar Sup-
plies in Stock at
Both Stores

SEE "SNOW WHITE and the SEVEN DWARFS" on ICE at the Armory April 8 thru 16.



LEO A. SELTZER
President

ARMORY NOW MECCA OF MILLIONS FOR VARIETY OF SPORTS, AMUSEMENTS, CIVIC EVENTS, IN CONTRAST TO OLD REGIME.

THE ARMORY now is in its fifth season under the Leo A. Seltzer Enterprises and the personal management of Irving Wayne. And, to say that their operation has been successful, and their efforts fruitful for Kentuckiana is an understatement.



IRVING WAYNE
Vice Pres.-Mgr.

IN BRILLIANT CONTRAST to the bleak old regime, LOUISVILLE'S ARMORY is today the mecca of the sports and entertainment world. The Armory is the scene of all MAJOR INDOOR SPORTS and AMUSEMENT EVENTS AND EXHIBITIONS serving Kentucky and the mid-west.

Under the personal direction of Irving Wayne, General Manager, the Armory—in the past year alone—has been the host to over 200 events witnessed by more than a million and a half people and grossing well over a million dollars!

Outstanding on the Armory calendar include the KENTUCKIANA HOME SHOW, internationally famous ice shows, the ROLLER DERBY, CHAMPIONSHIP BASKETBALL, LOUISVILLE BLADES U. S. LEAGUE ICE HOCKEY, Wrestling, Boxing, Ice Skating, Dancing & Concerts, Stage Shows, Shrine Circus and a wide variety of other attractions serving the amusement, educational and sports needs of the mid-west.

Not only is the ARMORY firmly entrenched in the favor of KENTUCKIANA and MID-WEST fans, but National promoters are already bidding for open dates for the 1951-52 season and future seasons.

When You Need Prescriptions think of—

LOUISVILLE APOTHECARY

"The South's Leading Prescription Store"

FREE DELIVERY TO ALL PARTS OF THE CITY

"Watch for our WHITE JEEPS"

Open every day 8 a.m. to 9 p.m.
4365—JA—4366

Louisville Apothecary
Incorporated
337 W. Broadway, in
BROWN HOTEL

Name Engraved FREE on any Pen or Lighter Purchased At

fountain pen headquarters

KENTUCKY PEN SHOP
316 W. CHESTNUT

Complete Repair Service for Parker, Sheaffer, Eversharp, Ronson and all pens and lighters

Lucky

NUMBER

MELLOWER . . .

Sterling

AGED THAT EXTRA MONTH

Schlitz

THE BEER THAT MADE MILWAUKEE FAMOUS

★

Distributed In Louisville By

JOHN MARTIN DISTRIBUTOR
INCORPORATED

Public Address and Sound Equipment For All Purposes SOLD AND RENTED

Inter Office Systems Televisions

Microphones :: Loud Speakers

LEWIS RADIO & SOUND SERVICE

JA 3350 2nd & Liberty

*Before the Game for Lunch
After the Game for Dinner*

FREDERICKS Bar & Restaurant

**TURTLE SOUP AND
FRIED TURTLE**

Our Specialty

MIXED DRINKS — PACKAGE LIQUORS

27th at Bank

**For Fine Clothes
MADE TO MEASURE**

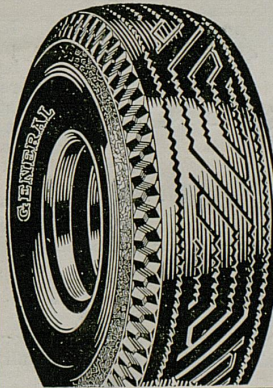
Poachy Marks

Highland 7286

1810 LAUDERDALE ROAD

A
Nº 87838

If the above number corresponds with the one announced at the end of the First Period you will receive special awards through the courtesy of BREAUX BALLARD CO., 2nd and Broadway, also HURRY UP BROADWAY, Jackson and Broadway.



**GENERAL
TIRES
HAWKINSON
TREADS**

**WESTINGHOUSE
APPLIANCES**

HURRY UP BROADWAY

BROADWAY AT JACKSON Easy Terms WA 4246

FREE 2 hockey tickets will be given at the end of the first period through the courtesy of Hurry-Up-Broadway

If the same Lucky Number appears on more than one Program, the Management reserves the right to hold a special drawing among those having duplicate numbers for the purpose of determining the winner. No member of the personnel of the Armory may be a participant in this contest.

**GUSS SAMPLE
SHOE SHOP**
423 WEST WALNUT

*Samples and Cancellations
of High Grade Footwear
AT POPULAR PRICES*

•
We Are Not Connected
With Any Other Sample
Shop

**SPORT
COATS - SHIRTS - SLACKS**

Borden's
SPORTSWEAR

425 West Walnut
Jackson 7370

**SUITS AND
TOPCOATS**

For
**SUPERIOR
MIMEOGRAPHING**

and
DIRECT MAILING

**LOUISVILLE
LETTER SERVICE**

Leeds Bldg. 3rd & Walnut

JA 5406

Jimmy **AMIN**

"Your Ice Man"

ICE and COAL

WHOLESALE AND RETAIL

For Service

Call **CLay 8615**

After Every Event . . .

AT THE ARMORY

Visit

BOONE'S CAFE

ALTON BOONE, Prop.

Wines — Liquor — Beer

Around the Corner at
460 SOUTH FIFTH

**Rialto Flower
Shop**

224 WEST WALNUT ST.

*"Say It With Our
Flowers"*

☆

JA 0429

WA 1181

WA 6862

**ELECTRICAL
WORKERS
UNION**

No. 369—I. B. of E. W.

Affiliated with the A.F. of L.

312 ARMORY PLACE

H. H. HUDSON, Business Mgr.

WA 6471—Phones—SH 6475W

**B. K. (RED)
BRANTLEY**

Crowd Engineering

USHERS • CASHIERS
TICKET TAKERS • GUARDS

525 West Walnut St.

**Playing
Surface**

The playing surface is as nearly as possible 200 feet by 85 feet and is marked off in three equal divisions by lines drawn across the ice. At each end, is a goal ten feet from the fence.



* * *

**Hockey
Sticks**

Hockey sticks shall not exceed 53 inches in length from the heel to the end of the shaft and 1 3/4 inches from the heel to the end of the blade. The stick shall be made of wood and without any projections. The blade of the stick shall not exceed three inches in height, except in the case of the goal-keepers' sticks, which shall not exceed three and a half inches.

* * *



**Kicking
the Puck**

Kicking the puck shall be permitted in all areas except by a broken stick, but a goal may not be scored by a kick of an attacking player. If a player with a broken stick shall kick the puck, a face-off shall be ordered at the spot where the puck was kicked, except as otherwise provided.

* * *

**Delaying
the Game**

A player beyond his defense area shall not carry or pass the puck backward into his defense area for the purpose of delaying the game. For an infringement of this rule the referee shall order a face-off at the point from which the pass was made.

* * *

Scoring

When the puck is put fairly into the goal by the means of the stick or if it should carom off any part of a defending player, a goal is scored. The team scoring the greater number of goals wins the match. The duration of a match is sixty minutes each. Rest periods of ten minutes each are allowed between the playing periods.



BASHFUL



DOPEY

KOSHER STYLE

RESTAURANT

DELICATESSEN

Leon & Ben's

330 W. Jefferson

SERVICE

Call A Sully Van

☆

**Sullivan Transfer
Company**

1105-07 West Main St.
7383—JA—7384

*We Do All Plumbing and
Heating Work at Armory*

Chas. F. Zehnder & Son

**Plumbing and Heating
Contractors**

☆

1354 Ellison Ave.
HI 2335

The

Nut & Candy Shop

For the Best in

NUTS & CANDIES

612 South Fourth

Next to Mary Anderson Theater

**ART PRINT
and
PUBLISHING
COMPANY**

●
Jackson 5683



SOUVENIR CONTEST Questions

Souvenirs will be given to fans sending correct answers to the following questions. For answers read the advertisements throughout this program. Address replies to Souvenir Contest Editor.

1. Where can you get Falls City Minnow Buckets?
2. What popular Bar and Restaurant at 27th & Bank features turtle?
3. What Tire Dealer sponsors the Souvenir Contest?
4. Where can you get the finest sea foods in Louisville?
5. Who engraves your name free on pens and lighters?
6. Who delivers to all parts of Louisville in White Jeeps?
7. Who is the Official Sign Writer for the Armory?



ED MITCHELL
Gen'l. Mgr.

Kentucky's
Largest
U. S. Tire
Dealer



ANDY YORK
Sales Mgr.

A GOOD
TIRE TEAM
"Mitchell
& York"



LA FENDRICH

Now... with
AIR-VENT

SMOKES
COOLER



DRAWS
FREER

BEFORE AND AFTER THE GAMES

PATRONIZE THE

WATTERSON HOTEL

Bar and Grill



It's just a few of the Ice Cycles of "ICE CYCLES OF 1950" in bathing suits of Grandma's day that were considered "oh so daring!" They appear in A DAY AT ATLANTIC CITY as just one of the 20 acts and 7 great production numbers which includes Walt Disney's SNOW WHITE AND THE SEVEN DWARFS — to be seen at the Armory, April 8th through 16th.

LOUISVILLE HAY, GRAIN & COAL COMPANY

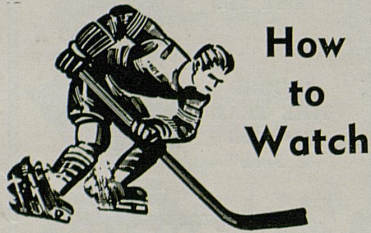
Home of

Good Coal, All Kinds—Steam and Domestic Furnaces
Coal, Gas and Oil Furnaces

REPAIRS AND REPLACEMENTS

SH 7500-7501 CY 8625

C. STERLING GOFF, Owner



How
to
Watch

A Hockey Game

A team is composed of six players forwards, or wing men, and a goalie. The wing men and center spearhead the offensive play while the defense men and goalie lead the defensive play.

The secret of hockey enjoyment is "Keep your eye on the puck." Regardless of what action takes place elsewhere on the ice, the manipulation of the puck determines the eventual winner.

Much interest comes from the satisfaction of seeing well-executed passing plays, passing of the puck from one player to another, as they plunge down the ice.

If the puck goes into the opponent's net the home club scores a goal; if the puck goes into the home club's net the opponent scores a goal. The team scoring the most goals wins the game, naturally.

The observer who watches the puck at all times cannot miss seeing plays

develop as the puck is skillfully worked towards a goal, nor can he fail to see defensive plays develop to stop the action of the puck.

By following the puck, the hockey fan will see the development of situations that cause a pause in the game. Usually, penalties are called for illegal action taken against the puck-carrier. Off-side plays, which bring frequent stops in the action of a game, develop when the puck is passed illegally across a blue line to a player of the same team, or when a player of the attacking team precedes the puck across a blue line.

There are, of course, other incidents to watch for on the ice. For instance note whether the defensive forwards attempt to take the puck away from the attacking team when the puck is being brought down the

Give the youngsters

ICE SKATES

And/Or

ICE SKATING
TICKETS

Special Prices On Both

Inquire tonight at

Office, or call CL. 2768

"Real Estate is the Best Investment"

FOR SALE
SOLLEY BROS. CO.
JA. 8535. WA. 7831

SOLD
SOLLEY BROS. CO.
JA. 8535. WA. 7831

ice by their opponents—watch where the defensemen are playing, and see whether each is covering his own side of the ice—whether they force the puck carrier into the boards so he cannot complete his play, or whether they combine to block him so that he cannot get a shot at the goal.

Hockey requires coordinated team-play. The best way to appreciate hockey is to follow the flight of the puck itself, for it is the location of this puck that determines at which point on the ice the offensive and defensive play is developing.

Wedding
Announcements

Genuine Engraved
Choice of Styles

\$1750
Per 100

Coats

ENGRAVING CO.

619 S. Second
JACKSON 8626



MASON'S

Quality

PAINT

For Every Surface

CITY SALES

427 W. Broadway
JACKSON 0151

Mason Paint Co.

1520 Algonquin Pkwy.

Phone JACKSON 5732



616 South 5th

Second Floor

Just a block away
The KENTUCKY
 Cocktail Lounge
 and the MURAL BAR
 now featuring
 HAZEL and EVELYN LENAUD
 Duo Pianist
 nightly except Sunday
 "It's the place to GO"
The KENTUCKY
 Dave Quinn, Manager

ICE SKATING NOW !! OPEN TO PUBLIC

REGULAR SESSIONS

Schedules Available
 At The Box Office

PRIVATE LESSONS

See Instructor Jean
 Tolton, Star of Ice
 Capades, in office or
 Call CL. 2768



LOW PRICES — SEASON OR SESSION
 SPECIAL SCHOOL, PARTY RATES

Blades at Home **HOCKEY**

Oct. 16—Lou...0	Omaha ...5	Dec. 6—Lou...3	Omaha1	Tuesday, 31	Omaha
Oct. 18—Lou...7	Tulsa6	Dec. 9—Lou...4	K. C.7	FEBRUARY	
Oct. 21—Lou...3	St. Paul ...3	Dec. 16—Lou...3	St. Paul ...3	Sunday, 5	Minneapolis
Oct. 28—Lou...7	Tulsa4	Dec. 20—Lou...5	Tulsa2	Tuesday, 14	St. Paul
Nov. 1—Lou...7	K. C.5	Dec. 23—Lou...7	St. Paul ...3	Sunday, 19	Tulsa
Nov. 4—Lou...5	St. Paul ...2	Dec. 27—Lou...4	Omaha ...5	Sunday, 26	Minneapolis
Nov. 11—Lou..4	K. C.3	Friday, 30	Kansas City	Tuesday, 28	Kansas City
Nov. 18—Lou...3	Minn.3	JANUARY			
Nov. 22—Lou...7	Tulsa1	Tuesday, 3	St. Paul	Sunday, 5	Omaha
Nov. 29—Lou...2	Omaha ...6	Friday, 6	Minneapolis	Tuesday, 7	Tulsa
Dec. 2—Lou...6	Minn.3	Friday, 13	Kansas City	Friday, 10	St. Paul
		Sunday, 15	Tulsa	Tuesday, 14	Kansas City
		Tuesday, 17	Omaha	Sunday, 19	Minneapolis
		Friday, 27	Minneapolis		

FLY WITH THE COMPANY THAT FLIES THE BLADES

CAPITOL AIRWAYS, Incorporated

Douglas DC-3 Airliners For Charter

Call LOUISVILLE FLYING SERVICE — CHerokee 1152 or 5031

SEE "SNOW WHITE and the SEVEN DWARFS" on ICE at the Armory April 8 thru 16.

"U"
 Can score a goal at
FALLS CITY PONTIAC CO.

NEW CAR STORE
 BROADWAY at FIRST
 WA 3154
 USED CAR LOT
 BROADWAY at HANCOCK
 WA 2423

Fair Prices Fair Terms Fair Trades

Complete Body Shop

Like Good Food?

☐ Come to Blue Boar for a scrumptious dinner, before evening events... Delicious Southern-style cooking, at modest cost, will make your palate and your budget sing with joy.

☐ At noon, of course, it's Luncheon Star Specials, for even less than regular, low Blue Boar prices. Full-sized, portions, too.

☐ There are two beautiful Blue Boars to serve you—644 S. Fourth and 410 W. Walnut. Luncheon served, 10:45 a.m. until 3:00 p.m. Dinner, 4:30 p.m. until 8:30 p.m. If you'd pick a winner, choose Blue Boar at mealtime.

BLUE BOAR CAFETERIA CO.
 Incorporated

644 S. Fourth • 410 W. Walnut

Louisville's Most Modern Plant

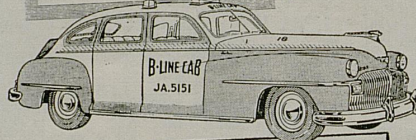
THE
Parrot
 DRY CLEANERS

OFFICE AND PLANT — 1131-33 Ellison Ave.
 MAgnolia 8891 — 8892
 BRANCH STORE — 1422 Bardstown Road
 Highland 9122

RAIN OR SHINE

Call
B-LINE
 Cab

UNION
 DRIVERS
 LOCAL 89



INSURED
 FOR YOUR
 Protection!

JACKSON
5151

Support the Blades . . .
HOCKEY
 Tomorrow Night



Blades vs. Omaha

Tickets On Sale, Armory Box Office

WATCH REPAIR

C. JACK STEFFEN
 JEWELER

Crystals Fitted While You Wait

422 W. Chestnut

For Prompt Efficient Service



ELLINGSWORTH AUTO ELECTRIC COMPANY

PARTS

1003-1009 E. Broadway JACKSON 1167

SERVICE

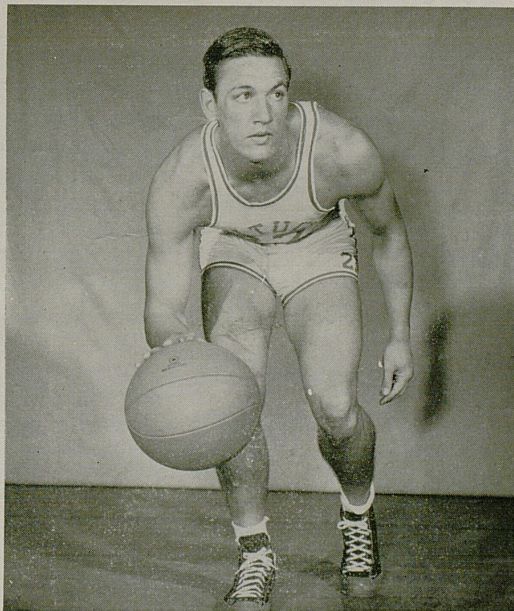
AUTOMOTIVE - AIRCRAFT - MARINE - INDUSTRIAL - DIESEL

SEE "SNOW WHITE and the SEVEN DWARFS" on ICE at the Armory April 8 thru 16.

With the Home Team it's

**KENTUCKY DAIRIES
MILK**

the MILK
of Superior Flavor!



Wallace Jones

DEPENDABLE

Yellow Cabs

JACKSON 2121

ARMOR IROQUOIS Gardens 

NOW
IN PERSON

Presents
THE WORLD'S MOST UNUSUAL DANCE TEAM!

ZENANA  **TOP SHOW OF THE YEAR**

and "FIFI" HER MONKEY  

GENE GORY
and ROBERTA
EXONENTS OF
INTELLECTUAL INSANITY 

PAUL CARLTON
"Mr. Song" 

FRAN MCCARTHY
and his ORCHESTRA 

Show 9 and 12:30



Since 1892...

A Name to Remember

WHEN YOU WANT TO EAT

Open 7 a.m. to 7:30 p.m.

Now Serving Breakfast

KUNZ'S

CATERERS

DINING ROOM
IMPORTED DELICACIES

619 S. 4th

JA 7273

1 DAY SERVICE
FACTORY METHOD

RECAPPING

6.00 x 16

\$6⁹⁵

**SOUTHERN
Service Station**

601 East Market

JA 0034

• JA 2564

See Universal
FIRST OR LAST

But

See

**UNIVERSAL
CAR COMPANY**

CHEVROLET
DEALERS

25th and Broadway

The Home of
CHEVROLET

SEE "SNOW WHITE and the SEVEN DWARFS" on ICE at the Armory April 8 thru 16.

*"Don't Take a Chance
Take a CHECKER"*

**CHECKER
CAB**

Clay 6561

Distributors

Ebonite
THE BALL THAT ROLLS RIGHT

BOWLING BALLS

For "action" in the pin area, roll an Ebonite Ball with Bates Grip and Curval drilling. Leather, Canvas and Plastic Bowling Ball and Shoe Bags. Bowling Shoes, Sandals.

Manufacturers
BILLIARD TABLES
Bowling and Billiard Supplies
C. C. STEEPLTON & CO.
530 W. Main Street Jackson 6582

WAR RECORDS
645 S
Everything
R

ALBUM GIVEN FREE TO LUCKY No.

When You
Build For
Yourself
You Will Want
Our Lumber . . .

"Build With The Best"

**BOLAND-MALONEY
Lumber Company**
913 E. MAIN • 328 BAXTER • LOUISVILLE

OLYMPIANS

No.	Name	Ht.	F. G.'s		FOULS		P. F.s	No.
			1st Half	2nd	1st Half	2nd		
15	Alex Groza Kentucky	6'7"						4 A
12	Ralph Beard Kentucky	6'						5 Jo
17	Wallace Jones Kentucky	6'4"						6 G
10	Cliff Barker Kentucky	6'2"						7 W
14	Joe Holland Kentucky	6'4"						8 P
18	Carl Shaeffer Alabama	6'3"						9 R
9	Bob Evans Butler	6'2"						10 A Ur
16	Malcolm McMullen Xavier	6'5"						11 L
19	Marshall Hawkins Tennessee	6'3"						12 A
7	Bruce Hale Santa Clara	6'2"						13 E
5	Paul Walther Tennessee	6'2"						14 A

Say: "I'll
Meet
You
At

Luvisi's
*The Spaghetti Specialist
On Fifth Street*

Full Course
Steak . . . Chicken . . .
Italian Dinners
Open Every Day 4 P.M.
Until Midnight
Air-Conditioned Dining Room
448 S. 5th, Just North of Walnut

DeSoto
VISIT RIGGS BIG
USED CAR LOT!
*Eighth and Broadway,
Next to SEARS*

Whether you — BUY — SELL — or TRADE
Automobiles — You'll SAVE at RIGGS!
Easy Credit Terms

Riggs Motor Co.

YOUR DOWNTOWN DE SOTO-PLYMOUTH DEALER
HEADQUARTERS, 710 W. BROADWAY—Clay 4887
8th & Broadway—USED CAR LOTS—730 S. Seventh

VARIETY

RECORD SHOP

645 SOUTH FOURTH

WAbash 8638

Everything In Popular and Classical
Records and Albums

JCKY No. B HOLDER EACH GAME

Catering is our Business
Not a side-line

Preston R. Kunz

CATERERS

BUFFET — DINNER PARTY
BUSINESS DINNERS

MA. 3272

1506 Shelby St.



Bluegrass Ford Co.

Incorporated

3827 Frankfort Ave.

S. L. BASSETT
President

FORD SERVICE
NITE and DAY
TA 0353

ST. MATTHEWS, KY.

SYRACUSE

No.	Name	Ht.	F. G.'s		FOULS		P. F.'s
			1st Half	2nd	1st Half	2nd	
4	Adolph Schayes New York University	6'7"					
5	John Macknowski Seton Hall College	6'					
6	George Ratkovicz Tri-City Blackhawks	6'7"					
7	William Gabor Syracuse University	5'11"					
8	Paul Seymour Toledo University	6'1"					
9	Raymond Corley Georgetown University	6'					
10	Alexander Hannum University of Southern California	6'7"					
11	Leroy Chollet Canisius College	6'2½"					
12	Alfred Cervi Rochester Royals	5'11"					
13	Edward Peterson Cornell University	6'9"					
14	Andrew Levane St. John's University	6'2"					

PAINT FACTORY TO YOU—SAVE A \$ OR 2

M
A
R
K
S



Manufactured and Sold By Us
Since 1929

PAINT CO.

626 W. Market—WA 4264
FREE PARKING ACROSS STREET
Herb Marks Fred McCoy

TIME OUT FOR

Clean Sport with the Louisville Blades
Clean Uniforms By Dulaney Cleaners

THE BLADES LOOK SHARP

With Uniforms Cleaned By

Dulaney Cleaners

E. D. ROBY, Owner

23rd at Oak

CYpress 2721

JACOB BAILEN
& SONS Since 1913

5 Vehicles to Serve You

ROOFERS

SHEET METAL

1135 South Second Street

Phones CLay 1663 - 1664

BYERS

New Car Sales and Service

144 East Broadway

USED CARS

123 East Broadway

BEAUTIFUL AND POWERFUL

DESOTO - PLYMOUTH

Motor Cars

Ask for a Demonstration



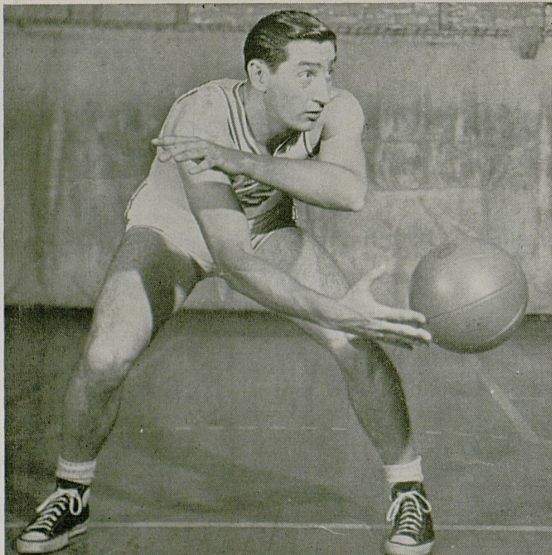
GOOD USED CARS

That We Guarantee

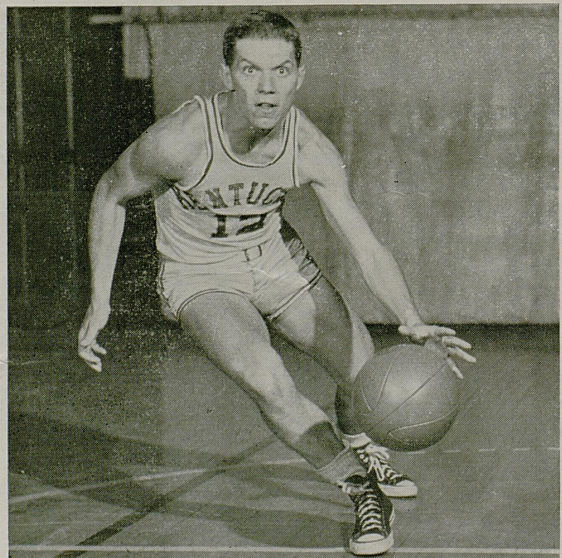
CONVENIENT TERMS

ALWAYS A FAIR DEAL WITH HONEST VALUES

Transportation Merchants Over 50 Years



Alex Groza



Ralph Beard



"Little George"

Success
to the
Blades



"Teek"

LITTLE GEORGE'S NEW YORK BAR

The Skyline Bar

BROADWAY AT ARMORY PLACE

Geo. McKeown and J. T. Cunningham
Props.

We Pay
MORE for
Used Cars



You'll make an ERROR if you don't TAKE
A WALK to our store before you sell.

TRI-CITY OLDSMOBILE CO.

909 East Broadway

SEE "SNOW WHITE and the SEVEN DWARFS" on ICE at the Armory April 8 thru 16.

BUICK

LEYMAN MOTOR CO., INC.

501 E. Broadway, Louisville, Ky.

"Your Buick Dealer for 30 Years"

WAREHOUSE

With

Falls Cities Transfer Co.

WA 4275

Over 200,000 sq. ft.
of Storage Space
Sprinkler Protection

Rail and Truck Facilities
Modern Handling Methods

Now as always—first choice

"BOB GREEN"

Sign-writer

Official Armory Sign Writer

708 E. BURNETT AVE.

LOUISVILLE 8, KY.

Phone MA. 4131

Always Ready To Serve You
Carter Steffey, Ken Grunwald

STEFFEY'S Service Stations

Standard Oil Products
PARKING

Tires—Batteries—Lubrication
Armory and Walnut—WA. 9534
7th and Jefferson—WA 9303
632 Armory Place
Road Service

FOR STAR COVERAGE

Get Sound Protection

ALL LINES
INSURANCE

The
BUDGET
Way

JULIUS

Jacobson
INSURANCE AGENCY

446 S. 5TH ST. CL 7734

Our Blades



Harry Dick

Autograph Here



Carrol Bloom

Autograph Here

*For Assured Comfort
For Economy
For Long Life*

Install a CHRYSLER AIR-
TEMP FURNACE — Expert
Installation — Dependable

Service

THE L. H. CALLAWAY CO.

945 Baxter Ave.

HI 7700

CHRYSLER AIR CONDITIONING
FOR ALL NEEDS

MARMOR INSURANCE AGENCY

506 South Third

FIRE — CASUALTY —

AUTOMOBILE

WA 5871

WA 5872

"KLEMPNER"

A GOOD NAME
TO REMEMBER

When You Have

SCRAP

Klempner Bros.

1371-1379 Lexington Road

Phone JA 5391-92

Louisville 4, Ky.

Ice Cycles



HAPPY



SNEEZY

April 8 to 16

SEE "SNOW WHITE and the SEVEN DWARFS" on ICE at the Armory April 8 thru 16.

THE ARMORY

KENTUCKY'S SPORTS AND EXPOSITION CENTER
LOUISVILLE, KENTUCKY

Leo A. Seltzer, President

Oscar Seltzer, Secretary

Irving Wayne, Vice Pres.-Mgr.

COMING ATTRACTIONS

JANUARY, 1950

Monday 30th — BASKETBALL . . . Indianapolis Olympians vs. Syracuse
Tuesday 31st — HOCKEY Blades vs. Omaha

FEBRUARY, 1950

Saturday 4th — BASKETBALL U of L vs. Duquesne
Sunday 5th — HOCKEY Blades vs. Minneapolis
Mon. 6th thru 12th — SHRINE CIRCUS
Monday 13th — BASKETBALL U of L vs. Marshall
Tuesday 14th — HOCKEY Blades vs. St. Paul
Saturday 18th — BASKETBALL U of L vs. North Carolina State
Sunday 19th — HOCKEY Blades vs. Tulsa

ORDER YOUR TICKETS TONITE AT ARMORY BOX OFFICE

For HOCKEY NEWS

Read

FRANK HARTLEY  DAVE KENNEDY
Louisville Times Courier-Journal

Listen To

DON HILL, WGRC
FINNEGAN-PHIL SUTTERFIELD, WHAS
GEORGE REEVES, WINN
DARYL PARKS, WKLO
JERRY BROWN, JACK DONNELL, WGRC

After the Game Visit

HOTEL SEELBACH

New COFFEE SHOP
Open 24 Hours

and

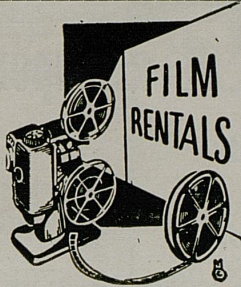
Winnah Bar

SEE "SNOW WHITE and the SEVEN DWARFS" on ICE at the Armory April 8 thru 16.

Distributor of
The R.C.A. 16 MM.
Sound Projector
for State of Kentucky
and Southern Indiana

Write or call for free
demonstration

**NATIONAL
FILM SERVICE**



NATIONAL SCHOOL SUPPLY CO. of KENTUCKY

Kentucky's Only Complete 16MM Film Library

JACKSON 6501

422 W. BRECKINRIDGE



You'll See Every-
body at Stebbins'
Grill of Louisville
. . . because the
whole crowd gath-
ers here for steaks,
chops and sea-
foods, also the fin-
est wines and liq-
uors.

WA 3562

Stebbins Grill
Chestnut, Between 4th & 5th

Louisville's
Leading Restaurant

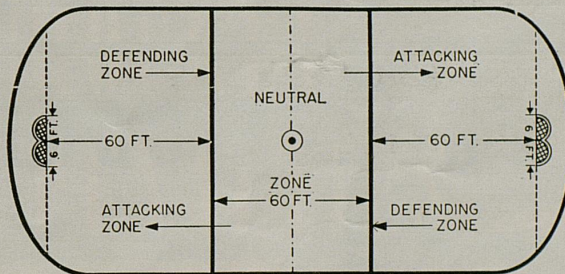
The playing surface is as nearly as possible 200 feet by 85 feet and is marked off in three equal divisions by lines drawn across the ice. At each end is a goal, 10 feet from the fence.

A circular spot six inches in diameter shall be marked in blue exactly in the center of the rink and with this spot as a center a circle of ten feet radius shall be marked with a line two inches in width, also in blue.

There shall also be a red line, 12 inches in width drawn through center ice and continued vertically up the side of the fence or dasher, to be known as the "Center Line".

In explanation of this red line, let's pretend that three

THE RINK



players are skating toward the opposing goal. The player carrying the puck must cross the last BLUE line first. Otherwise, the whistle blows, and an off-side is called, and the puck is faced off.

But, should a defending player acquire possession of zone, he has the privilege of passing the rubber disc to any team-mate as long as the pass is completed this side of the center Red line.

This eliminates considerable crowding in the corners. The defensemen cannot play too close to the blue line, for they must be careful not to be caught out of the position.

Introducing :-

"Coach of Champions"

Rudy Pilous, new head man, for our Blades;
Winner with San Diego and Houston teams!



★
Background includes play
with champs, scouting,
refereeing.

★
Famous also as humorist—
but not on ice rink; his
stories "tall".

★
Meet Mr. Rudy Pilous, the new coach of the
Louisville Blades entry in the United States
Hockey League.

★
Mr. Pilous is the "Coach of Champions", a repu-
tation he earned by guiding the San Diego to the
Pacific Coast League championship in 1948-49,

Continued on Page 20

for complete coverage of all sports



sports director
Jimmy Finegan

listen to the
WHAS
Sports Team

SPORTS DOUBLE-HEADER • KENTUCKIANA SPORTS
5:15 P.M. (Mon.-Fri.) • 10:15 P.M. (Mon.-Sat.)

WHAS
Louisville
(840 on the dial)

Kentuckiana's Clear-Channel Station



sportscaster
Phil Sutterfield

ask for a **FROZEN CONFECTION**
ICE CREAM BAR



ICE CREAM

BAR

SOLD BY VENDORS
AT ARMORY

FROZEN CONFECTION CO.

606 W. HILL — LOUISVILLE, KENTUCKY



COLD RUBBER RECAPPING
BATTERY SERVICE
ROAD SERVICE

TIRES



WAbash 5943

Motorola
TELEVISION
SET

will be given
most popular
player.

I AM VOTING _____

MY NAME IS _____

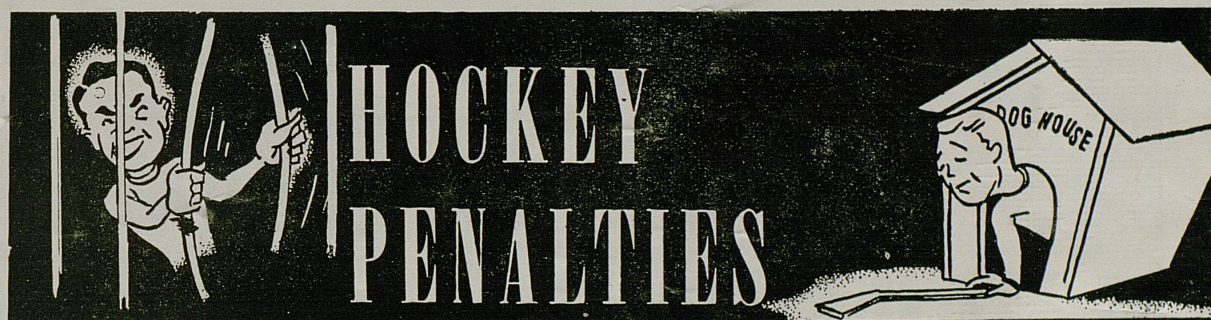
MY ADDRESS IS _____

Write the name of your favorite player and your own name and address, tear the coupon out and drop it in the ballot box. Vote as often as you please.

You Are Never Penalized
at
McLEOD
90-Day Credit Same as Cash
Liberal Trade-Ins
SERVEL REFRIGERATORS
THOR WASHERS
CALLORIC RANGES
McLEOD
Appliance Co.
605-7 W. Oak WA 8926

The SILVER MIRROR
"Downtown's Smartest
Nite Club"
442-4 S. Third St.
THE BEST
IN FOOD AND
ENTERTAINMENT
DINING
DANCING
FOR
RESERVATIONS
Phone JA 9420

4 Hr. Odorless
Dry Cleaning Service
JANES
Cleaners and Launderers
222 So. 7th
814 W. Market
1-Day Complete Laundry
Service. Shirts A Specialty.



A—MINOR—Two Minutes:

1. Holding puck with hands or gloves.
2. Holding an opponent in any way.
3. Tripping, charging, loafing, interference.
4. Deliberately shooting the puck outside of playing surface, cross-checking, hooking.
5. Second offense of players interfering with face-off.
6. Player substituting for other player too soon, anti-defense, delaying game.
7. Player moving out of position on penalty face-off.
8. Fighting—if not the aggressor, carrying high stick.
9. Body-checking into boards (optional).

10. Returning to ice before penalty is up.

B—MAJORS—Five Minutes:

1. Tripping or holding an opponent to prevent scoring a goal.
2. Charging from behind.
3. Cross-checking or charging goal-keeper.
4. Throwing stick in defending or neutral zone.
5. Violently body-checking or hooking.
7. Starting a fight.
8. Carrying a high stick which results in injury to an opponent.

N.B. — Second Major 15 Minutes with sub allowed after five minutes.

Third Major Balance of Game.

C—MISCONDUCT—Ten Minutes:
(Substitute allowed)

D—MATCH—Balance of Game:

1. Deliberately injuring an opponent. No substitute allowed until 10 minutes elapse.
2. Attempting to injure an opponent, official or spectator. Substitute allowed, at end of fifth minute.
3. Kicking or attempting to kick an opponent. Substitute allowed after five minutes.
4. Interference with officials. Substitute allowed.

E—PENALTY FACE-OFF:

1. Goal-Keeper not throwing puck away immediately or throwing it towards opponents goal.

Prompt
WATCH
REPAIRING
Competent experienced watchmakers, plus right materials assure the right repairs of your watch.
WA 7821

509 W. WALNUT
Putnam Clark
Jeweler

Ice Skating
Open to Public
Schedules Available
At The Box Office
PRIVATE LESSONS
See Instructor Jean Tolton,
Star of Ice Capades
In Office or Call
CLay 2768

RECAPPING
Don't Boot That Tire
"CAP IT"
CARL EARL ED. DAVIS
Distributors of
KELLY SPRINGFIELD TIRES
MODERN
HI-CAP TIRE CO.
WAbash 5067
617 WEST OAK

ARMORY
NIGHTLY 8:30
April 8 thru 16
Matinees 2:30 p.m.
April 9, 15, 16



**ICE
CYCLES of 1950**

Featuring
All The Hit Tunes, Lovable Characters Of
Walt Disney's
**"SNOW WHITE
And The
SEVEN DWARFS"**

"The Latchstring is a handy spot to grab a bite or eat a Lot."

LATCHSTRING

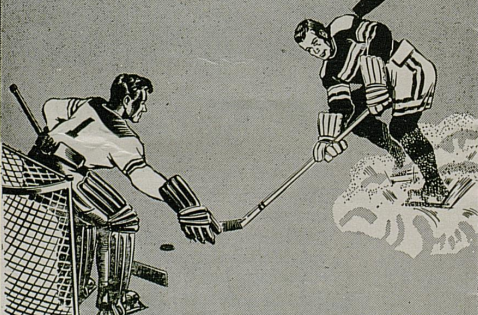
Restaurant

419 West Broadway

*The Cleanest Kitchen
in Town*

**STEAKS :: CHOPS
CHICKEN**

Serving 'til Midnight



Lucky

NUMBER

and the Houston Club to the United States League title in 1947-48.

But the new Blades head man didn't come by this success overnight, or through luck. His background—like that of most Canadians affiliated with their great National sport—goes back to his childhood days, and is one full of color as well as championships.

Always a little fellow in his younger days, the 35-year-old 6', 230-pound mentor started out with three things on his mind: First, hockey; second, exercising horses with Johnny Longden and his other friends; third, music—his entire family of five sisters, and two brothers, and father are musicians of the symphonic type.

Hockey captured his youthful ambitions, and Rudy grew up an outstanding rink star. He excelled in juvenile and Junior Hockey in Winnipeg; starred with Selkirk in Canada's Senior League; played before the King and Queen in England;

pastimed on the Champion New York Rovers team of the New York Rangers; organized and headed the St. Catherine's, finalists four straight years in the Championship playoffs; refereed a year; then joined Buffalo Hockey Club as chief scout and assistant to the general manager; and aside from his piloting the San Diego and Houston clubs to titles the new coach rounded up some of the most sparkling performers in "big leagues" today. He also set up our great championship Blades of the International League last year.

Away from business, Pilous is a great story teller, his dialect "tall tales" being in demand wherever members of the press and radio gather. He's an outdoor specialist, a hunter and fisherman; likes to cook, too—native Bohemian dishes and sauerbraten is his No. 1 dish.

He's a family man, and Mrs. Pilous and his daughter are with him in Louisville—cheering and rooting for another championship!



HIGH ROCK!

is made with real Jamaica Ginger!

HIGH ROCK!

is the only ginger-y Ginger Ale!

HIGH ROCK!

in the big 32-ounce bottle!

★ FULL QUART ★
SERVES SIX ★

ALL FLAVORS ON SALE AT
ALL GOOD DEALERS

FOR REAL ANGLERS!

Sturdy, durable, streamlined! De-
signed for easier selection of min-
nows. There's Falls City Minnow
Bucket to meet **your** needs. Look
'em over at your dealer's!



ALSO
My Buddy
TACKLE BOXES

**FALLS CITY
MINNOW BUCKETS**

B

No 42693

If the above number corresponds with
the one announced at the end of the
Second Period you will receive special
awards through the courtesy of Bank
of Louisville, 427 West Market Street.



The holder of the lucky
number receives 2 free
hockey tickets. If you
are a Bank of Louisville
Customer at time of
drawing, you will receive
4 FREE TICKETS.

BANK OF LOUISVILLE

"Where Louisville Banks"

Loans · Checking · Savings · Safety Boxes

Main Office 427 W. Market St.

Broadway Branch
Near 7th St.
Will Open Soon

If the same Lucky Number appears on more than one Program, the Management reserves the right to hold a special drawing among those having duplicate numbers for the purpose of determining the winner. No member of the personnel of the Army may be a participant in this contest.

**Independent
Cleaners**

CALL
JA-0113

for
Famous



ONE DAY CLEANING

Phone Independent Cleaners anytime dur-
ing the day (before 5 P. M.)—and a
courteous routeman will be at your door
that same evening between 5 P. M. and
8 P. M. Upon request, you can have your
clothes back the very next evening. Re-
member the number: JACKson 0113.

**Independent
Cleaners**

30 Stores 30
MAIN PLANT — 817 E. MARKET



SLEEPY

Another Ice Show!

**FEATURING YOUR FAVORITES OF
RADIO, SCREEN & TELEVISION**

★ ★ ★ ★ ★
**ALL IN PERSON
ON ICE**

Get your tickets at the Armory Box Office

ICE CYCLES of 1950



GRUMPY

SEE "SNOW WHITE and the SEVEN DWARFS" on ICE at the Armory April 8 thru 16.

DODGE
Passenger
Cars
PLYMOUTH

BREAUX BALLARD CO.

"Where Your Car Is Among Friends"

TRUCK HEADQUARTERS

River Road at Jackson St.

Phone CLay 2731

DODGE
Job Rated
TRUCKS

2nd and Broadway

THE SMOKER

When in Louisville, it's a must to visit

TOPPY LOCKE NEWS EMPORIUM

Located at 458 S. Fifth Street

Opposite Kentucky Hotel

YOUR FAVORITE BRANDS

Cigars, Cigarettes, Tobaccos,
out of town Papers and Magazines
Sporting events received daily

When You Think of Coal
THINK OF ST. BERNARD

Washed Coal Specialists

FROM MINES TO YOU

Since 1870

ST. BERNARD COAL CO.

W. W. Chilton, Mgr.

U. of L. NET COACH CONFIDENT

Cards plan ambitious Schedule at the Armory



Coach "Peck" Hickman

see, Denver, Duquesne, Xavier, Eastern, Western, Murray and Evansville.

The 1949-50 basketball season will mark one of the most ambitious schedules that the up - and - coming Cardinals have attempted. They will meet major teams from every section of the country at the Armory. Major opponents will include North Carolina State, Tennessee, Eastern, Western, Murray and Evansville.

The team? Well, there are two main questions that cannot be answered until it actually takes the floor. Can they replace Coleman and Johnny Knopf? Coach "Peck" Hickman figures to replace Coleman and Knopf with Bob Lockmuller, 6' 6" center from Indiana and Lou Jensen of New Albany. The remainder of the team will be intact: Kenny Reeves, Glenn 'Ish' Combs, co-captains; and Dick Robison, center.

This year Cardinals will probably be faster. The height will average about the same. They may be stronger in reserves. Coach Hickman is confident about the coming grind.

The Cards are eager yet cautious about the coming campaign, a year that should make the University of Louisville known even better known nationally.

DING HO CHINESE RESTAURANT

229 W. Jefferson

in the Earle Hotel

FEATURING

Exotic Chinese Dishes
and Fine American Food

WE PUT UP TO
TAKE OUT

Jackson 5470

Open 11:00 A.M. to 12:30 A.M.

DAY AND NITE SERVICE
PIN BALL MACHINES

B & B NOVELTY COMPANY

Incorporated

SHUFFLEBOARD
PHONOGRAPHS

JA 8811 — WA 2663

WA 3615

715-717 W. Main St.

WIEDEMANN'S

Fine
BEER

REISING DISTRIBUTORS

415 East Woodbine

MAGnolia 2442

SEE "SNOW WHITE and the SEVEN DWARFS" on ICE at the Armory April 8 thru 16.

SERVE YOURSELF—Coca Cola
HERE IN THE ARMORY
FOR YOUR CONVENIENCE—NO WAITING—ICE COLD



112 E. MAIN **AUTOMATIC DRINK VENDORS** LOUISVILLE, KY.
OPERATORS

Coca-Cola Cup Vending Machines

ANOTHER ICE SHOW!

More brilliant than ever, and featuring for first time all in person—your favorites of radio, screen and television!!

ARMORY

Nightly at 8:30 P. M.
APRIL 8 THRU 16
Matinees April 9, 15, 16 at 2:30

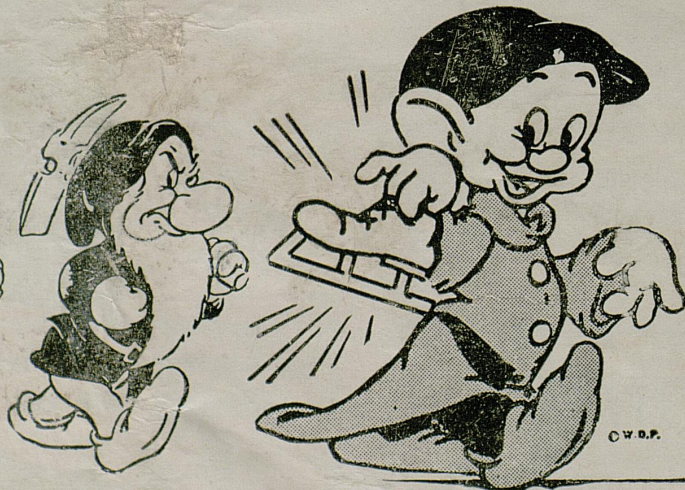
We've put them on Ice!

BY SPECIAL ARRANGEMENT WITH
WALT DISNEY . . .

"SNOW WHITE and the SEVEN DWARFS"



ICE CYCLES of 1950



MAIL ORDERS NOW! TO ARMORY BOX OFFICE

**TO INSURE CHOICE OF SEATS FOR THIS GREAT SHOW
BE SURE TO ORDER EARLY**

Kindly mail me _____ tickets at \$3.00 - \$2.50 - \$2.00 for ICE CYCLES OF 1950. (List second choice.)

**Kindly Enclose Stamped Self-Addressed Envelope
for Prompt Return of Tickets.**

Name _____

Address _____

NIGHTS 8:30 P.M.

Saturday	April	8	<input type="checkbox"/>
Sunday	"	9	<input type="checkbox"/>
Monday	"	10	<input type="checkbox"/>
Tuesday	"	11	<input type="checkbox"/>
Wednesday	"	12	<input type="checkbox"/>
Thursday	"	13	<input type="checkbox"/>
Friday	"	14	<input type="checkbox"/>
Saturday	"	15	<input type="checkbox"/>
Sunday	"	16	<input type="checkbox"/>

MATINEES 2:30 P.M.

Sunday	April	9	<input type="checkbox"/>
Saturday	"	15	<input type="checkbox"/>
Sunday	"	16	<input type="checkbox"/>