



Hello Down There!

This week's Kernel Sweetheart, Emily Riley, a junior sociology major from Louisville, appears unperturbed as she stands high up on the tower on the football practice field. Miss Riley is a Kappa Kappa Gamma sorority pledge. She attended Stephens College in Columbia, Mo., last year.

Awards Are Given 14 ROTC Students

Fourteen military science students were awarded the title of Distinguished Military Student yesterday.

Students selected were Henry S. Beeler Jr., Lebanon Junction; William F. Byrne, Ashland.

Emercy S. Conyers, Berry; George A. Duncan, Auburn; James S. Hayes, Cobb.

James P. Hill, Lexington; Thomas I. Isaacs, Lebanon; Caryl G. Merch, Prospect; Donald A. Martina, Lexington.

Gerald E. Milam, Lewisburg; Jimmy D. Robinson, Kevil; Frederick I. Rosenberg, Frankfort; Daniel M. Shepherd, Madison, Ind.; and Robert C. Sholar, Cadiz.

Selection of these students was

100 Expected To Attend Conference

About 100 delegates are expected to attend the annual Leadership Conference beginning tomorrow at Camp Bingham, according to Anne Shaver, conference chairman.

The delegates will leave from the SUB at 8 a.m. tomorrow by bus for the camp near Springfield.

Leroy Miles, president of the First National Bank, Lexington, will be the keynote speaker. Jim May, personnel director of American Air Filter Company, Louisville, is the conference advisor and will deliver the closing address.

The conference will be held to discuss problems of student organizations, general campus problems, and student-faculty-administration relationships.

"This conference provides a chance to talk over campus problems, both among ourselves, and with the members of the faculty," Miss Shaver said. "Also it is a good opportunity for freshmen to learn who's who and what's what," she added.

Classes Will Meet During Kennedy Talk

By MARILYN MORRIS
Kernel Staff Writer

Classes will not be dismissed tomorrow during Sen. John F. Kennedy's campaign speech at 9:30 a.m., according to a release from the president's office.

Personnel in all areas of the campus may attend the Demo-

cratic nominee's speech if their supervisor approves.

The opinion of several instructors contacted yesterday was that although classes are not going to be dismissed, there will probably be low attendance in second hour classes.

Dr. E. G. Trimble, acting head of the Political Science Department said, "I assume that many classes will be cut, but that is up to the student and his instructor."

Prof. Richard B. Freeman, head of the Art Department said, "Classes will not be dismissed, but attendance is up to the individual and the instructor."

Dr. James C. Eaves, head of the Department of Mathematics and Astronomy, emphatically stated, "There are no cuts in my class except in an emergency, and this certainty is not an emergency."

University Vice President Leo M. Chamberlain withheld comment.

Kennedy will arrive at Blue Grass Field at 11 o'clock tonight following a nationally televised debate with his Republican opponent, Vice President Richard M. Nixon. He will be accompanied by his staff of 20 and by 70 press representatives.

The candidate will be greeted tonight by a welcoming committee of members of the UK and Transylvania Young Democrats clubs.

Following his address in front of the Administration Building, Kennedy and his party, which includes one of his sisters and Gov. Bert Combs, will head a motorcade to the airport. They will leave at 10:30 a.m. Saturday for Bowling Green where Kennedy is also scheduled to speak.

Anticipating a large crowd tomorrow, Dr. Chamberlain said that Parking Area I will not be closed to the faculty and staff, but emphasized that there will be a limited number of spaces.

He added, however, that offices in the area may be closed with the supervisor's approval.

Skinner Will Open Psychology Series

Dr. B. F. Skinner, a Harvard University psychologist who introduced the "machine method" of classroom teaching, will open the annual University Psychology Lecture Series at 8 p.m. Monday.

In his lecture, "The Future of Teaching Machines," he will present information and predictions on his theory that through machine teaching, "any given material can be learned in half the time, with half the effort."

The teaching machine is a device that teaches by testing and employs a method which originated in experimental psychology. Machines are now being used in a number of schools and colleges to teach introductory courses.

Skinner himself teaches an elementary psychology course at Harvard by the machine method. His program is also being used in Java, Lebanon, and the Philippines.

Statistics point up the need for stepping up the teaching and learning process, claims Dr. Skinner. By 1970 there will be 50 million children in school and 10 million students in college.

"To supply teachers for this number, 50 percent of all college graduates would have to become teachers," Skinner said. "This is, of course, impossible," he added.

Dr. Skinner's interest in experimental analysis of behavior was confined to rats and pigeons until a few years ago. Extensions of his techniques to humans reportedly began after he visited his daughter's fifth grade math class.

Noting the lack of interest, the slowness of teaching and the obvious "waste of time" by students and teacher, he immediately began to develop his machine method of teaching.

Dr. Skinner received the War-

ren Medal of the Society of Experimental Psychology in 1942 and the Distinguished Scientific Contribution Award of the American Psychological Association in 1958.

He is a member of the National Academy of Sciences, the American Philosophical Society and the American Academy of Arts and Sciences.

Both his M.A. and Ph.D. degrees were granted by Harvard after which he received the National Research Council and Guggenheim Fellowships.



DR. B. F. SKINNER

ID Cards

Students who have had ID pictures made can pick them up today from 9 a.m. to 12 noon and from 1:30 p.m. to 4:30 p.m. behind the ticket office in the basement of the Coliseum.

Fee slips must be presented to get the ID cards.

Students who have lost ID cards or fee slips should report to the offices of the dean of men or dean of women.

made by the professor of military science, Col. R. E. Tucker, and referred to the University president, Dr. Frank G. Dickey, for approval.

The basis for selection is a combination of academic achievement and outstanding leadership traits.

Students maintaining D.M.S. status throughout their senior year are offered a regular Army officer's commission upon graduation.

LSU Professor To Speak Today

Dr. Rene deVisme Williamson will deliver the Blazer Lecture on "Religion and the Constitutional Convention of 1787" at 11 a.m. today in Guignol Theatre.

Dr. Williamson is the head of the Department of Political Science at Louisiana State University. He is a former associate editor of the Journal of Politics. The lecture is open to the public.

World News Briefs

U.N. Haggles Over Red China

UNITED NATIONS, N.Y., Oct. 6 (AP)—The U.N. General Assembly plunged tonight into a wrangle over the Red China membership issue. The United States, aware it had aroused resentment in the powerful Asian-African bloc, was confident of barring action.

The Soviet bloc opened the debate with a new attack on the United States keyed to the theme of discrimination against Negroes in the United States, already raised in the assembly by Premier Khrushchev Saturday.

Nixon Blamed For Cuban Mess

CINCINNATI, Oct. 6 (AP)—Sen. John F. Kennedy tonight blamed Vice President Richard M. Nixon and the Eisenhower administration for policy failures which he said led to establishment of a militant Communist satellite in Cuba.

"It is the party in power which must accept full responsibility for this disaster," the Democratic presidential nominee declared in a speech at a \$100 a plate fund raising dinner.

Cubans Pursuing Invaders

HAVANA, Oct. 6 (AP)—Fidel Castro's government claimed today its armed forces are in hot pursuit of 24 survivors of a 27-man invasion force from the United States which landed near the eastern tip of Cuba. U.S. policy directors were blamed for the incursion.

A communique of the armed forces ministry said militiamen intercepted the invaders soon after the landing at Navas Bay, killed their leader and captured two others.

Kennedy Farm Plan Rapped

WASHINGTON, Oct. 6 (AP)—A report prepared at the Agriculture Department says Sen. Kennedy's farm program would shrink the nation's farm plant a fifth and cost a million jobs in agriculture and related industry.

In addition, it said the program would boost farm prices 50 to 60 percent over last year and increase food prices about 25 percent. Current farm prices are about 1 percent below 1959 levels.

New Presbyterian Center To Be Completed In Spring

A \$170,000 Presbyterian student center is being built at the corner of Rose Street and Rose Lane near the Fine Arts Building.

The new center is expected to be completed next spring, said the Rev. John R. King, Presbyterian minister to students.

The building will replace the old center located beside the Maxwell Street Presbyterian Church. The lot for the center was bought from the University in 1957.

The center will be a two-story brick structure. Its architecture will blend with that of the Fine Arts Building.

On the first floor will be office space, a large lounge and game room, and restrooms. The second floor will have a library, a chapel, a dining and recreation room, a kitchen, two seminar rooms, and two offices.

Sixty-five students new regularly attend the Sunday evening services at the old student center and approximately 200 students take part in its activities, Mr. King said.

Weekday activities at the new center will be mostly group studies of the Bible, religious literature, religious art, and the like, Mr. King added.

The new center's cornerstone will be laid Nov. 4, and dedication ceremonies will be held in April.

Blood Bank Is Organized For UK By Local Hospital

A blood bank is being set up at the Central Baptist Hospital for UK students. ed to contact the BSU at 371 South Limestone, phone 2-5393.

Sponsored by the UK Baptist Student Union, the bank will serve charity patients as well as eligible students.

Full time students, their wives or husbands, and their children will be able to receive blood at no cost, regardless of the location of their hospitalization.

Students must be 21 years old. Those students between 19 and 21 who have legal written permission from their parents or guardians may donate.

Prospective donors will be given a free physical examination at the hospital.

Three to five donors are needed each month to meet the quota. All interested students are ask-

Placement Service Releases Schedule

The University Placement Service has announced the following interview schedule for next week.

Oct. 10—Sinclair Research Laboratories, B.S., M.S., Ph.D. in chemistry; and chemical engineering.

Oct. 12—American Steel Foundries, metallurgical, mechanical, and electrical engineering. Atlas Power Company, chemical and mechanical engineering; and chemistry at all levels.

Oct. 14—American Air Filter, electrical and mechanical engineering.

Campus Events

FRIDAY
Student Union Board, party for international students, 4 p.m., Music Room, SUB.

SATURDAY
Art Club, 1 p.m. in Room 208, Fine Arts Building.
Faculty of the School of Home Economics, 1 p.m., Old South Inn, Winchester.

MONDAY
Blue Marlin Swimming Club, 6:30 p.m., Oct. 10, 11, and 13; Coliseum pool.

YWCA, 6 p.m., Music Room, SUB.

UK Music Department, 4:00 p.m., Music Room, SUB. Dr. A. C. Howell, UK Music Department will present "Opera Program Notes."

Student Union Board Social Committee, free dancing lessons, 6:30 p.m., Ballroom, SUB.

Home of the College Folks

ADAMS

683 S. Broadway PHONE 4-4373



Private Rooms for Parties — Reasonable Prices
"High Fidelity Music for Your Dining Pleasure"

MR. AND MRS. JOHN INNES, Proprietors

TAYLOR TIRE CO.

Phone 2-7127

"Complete Automotive Service"

400 E. VINE ST.

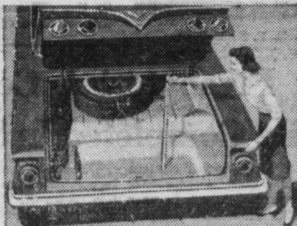
LEXINGTON, KY.

HERE! THE GREATEST SIXTY-ONE DERFUL CHEVROLET

Here's the car that reads you loud and clear—the new-size, you-size '61 Chevrolet. We started out by trimming the outside size a bit (to give you extra inches of clearance for parking and maneuvering) but inside we left you a full measure of Chevy comfort. Door openings are as much as 6 inches wider to give feet, knees, and elbows the undisputed right of way. And the new easy-chair seats are as much as 14% higher—just right for seeing, just right for sitting.

Once you've settled inside you'll have high and wide praises for Chevrolet's spacious new dimensions (in the Sport Coupes, for example, head room has been upped as much as 2 inches, and there's more leg room, too—front and rear). Chevy's new trunk is something else that will please you hugely—what with its deep-well shape and bumper-level loading it holds things you've never been able to get in a trunk before.

Yet, generously endowed as this car is with spaciousness and clean-etched elegance, it holds steadfastly to all the thrifty, dependable virtues Chevrolet buyers have come to take for granted. Your dealer's the man to see for all the details.



There's never been a trunk like it before! The floor's recessed more than half a foot and the loading height is as much as 10 1/2 inches lower.

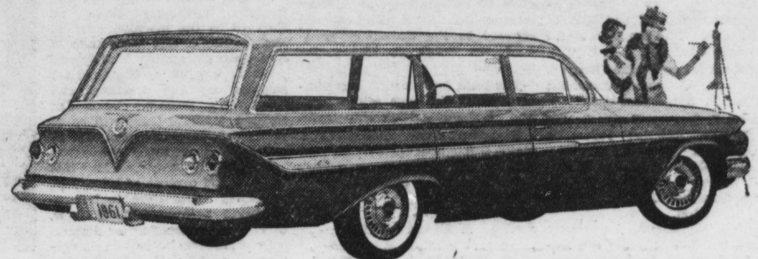
INTRODUCING THE '61 CHEVY BISCAYNE 6

the lowest priced full-sized Chevy with big-car comfort at small-car prices!

Chevy's new '61 Biscaynes—6 or V8—give you a full measure of Chevrolet quality, roominess and proved performance—yet they're priced down with many cars that give you a lot less! Now you can have economy and comfort, too!



IMPALA 4-DOOR SPORT SEDAN—one of five Impalas that bring you a new measure of elegance from the most elegant Chevis of all.



NOMAD 9-PASSENGER STATION WAGON. You have a choice of six Chevrolet wagons, each with a cave-sized cargo opening nearly 5 feet across.



BEL AIR 2-DOOR SEDAN, like all '61 Chevrolets brings you Body by Fisher newness—more front seat leg room.



Biscayne 4-Door Sedan

See the new Chevrolet cars, Chevy Corvairs and the new Corvette at your local authorized Chevrolet dealer's

Probation Ruling Approved

A ruling prohibiting students on academic probation to participate in intramural sports was unanimously approved Wednesday by the Faculty Committee on Student Organizations.

A May 1958 ruling of the committee stated that a student who is on academic probation shall not be allowed to do the following.

1. To serve as an officer or committee member in any campus organization.

2. To participate in any University extra-curricular activity or in the activities of any University organization if the participation involves the expenditure of an appreciable amount of time.

3. To participate in intercollegiate athletics.

Because of several requests from the students the second part of the 1958 ruling was brought before the committee for interpretation.

Last year students on probation were allowed to participate in the intramural activities.

White To Head National Committee

Arts and Sciences Dean M. M. White has been appointed national centennial chairman for the division of arts and sciences of the American Association of Land Grant Colleges and State Universities.

The nation-wide celebration is set for 1961-62. Dean White's committee will be responsible for liaison with national societies, associations, and similar groups to bring the centennial to their attention.

KERNEL Classifieds Bring Results

SOUTHSIDE CHURCH OF CHRIST

One-half Mile South of UK Campus — 1533 Nicholasville Road

SUNDAY

Classes	10:00 a.m.
Communion	11:00 a.m.
Sermon	11:15 a.m.
Evening Service	6:00 p.m.
WEDNESDAY	7:30 p.m.

THURSDAY

Campus Devotionals, SUB "Y" Chapel, 6:30 p.m.



BASIL OVERTON
Minister
Phone 7-6718

Don't Spend Hours Washing
Let us do it for you . . .

We Wash . . . Dry . . . Fold
ONLY 11c A POUND

Anne's Wee Wash It Laundry
E. HIGH AT WOODLAND

Monday Meetings

Young Democrat Club, 7 p.m.
Room 128 SUB.

Guignol Players, meeting for all students interested in any form of theater work, 4 p.m., Laboratory Theatre.

SHOW ON WORTH!

NEW '61 CHEVY CORVAIR More space . . . more spunk and wagons, too!



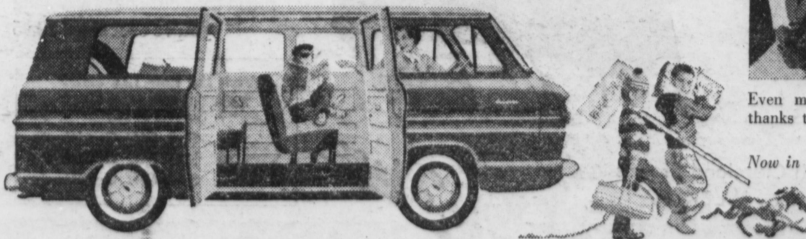
The newest car in America: the CORVAIR 700 LAKEWOOD 4-DOOR STATION WAGON.



CORVAIR 700 CLUB COUPE. Like all coupes and sedans, it has a longer range fuel tank.



CORVAIR 700 4-DOOR SEDAN. Provisions for heating ducts are built right into its Body by Fisher.

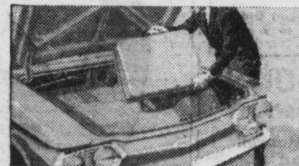


Here's the new Chevy Corvair for '61 with a complete line of complete thrift cars.

To start with, every Corvair has a budget-pleasing price tag. And Corvair goes on from there to save you even more. With extra miles per gallon . . . quicker-than-ever cold-start warmup so you start saving sooner . . . a new extra-cost optional heater that warms everyone evenly. Riding along with this extra economy, more room inside for you, more room up front for your luggage (sedans and coupes have almost 12% more usable trunk space).

And our new wagons? You'll love them—think they're the greatest thing for families since houses. The Lakewood Station Wagon does a man-sized job with cargo, up to 68 cubic feet of it. The Greenbrier Sports Wagon you're going to have to see—it gives you up to 175.5 cubic feet of space for you and your things.

Corvair's whole thrifty lineup gets its pep from a spunkier 145-cu.-in. air-cooled rear engine. Same rear-engine traction, same smooth 4-wheel independent-suspension ride. See the polished and refined 1961 Corvair first chance you get at your Chevrolet dealer's.



Spare tire is in the rear in coupes and sedans—leaving more luggage space up front.



Even middle-seat passengers sit pretty, thanks to Corvair's practically flat floor.

Now in production—the GREENBRIER SPORTS WAGON with up to twice as much room as ordinary wagons (third seat optional at extra cost).

See the new Chevrolet cars, Chevy Corvairs and the new Corvette at your local authorized Chevrolet dealer's

Sense Of Values

Last Sunday was a day of joy and of sorrow. It was joyous for those young ladies who received bids from the sororities they wanted to pledge, sad for the young ladies who did not receive the bid of a favored group.

To both of these groups, and to all others who may benefit from our advice, we direct our words.

Often as we go through our lives, we see things—bright, shining things—which we want very badly. Often they have no direct bearing upon our actual physical being, they are merely things we would like to have for reasons of social prestige.

Such a thing is sorority membership. We do not feel that because sorority membership is a matter of social prestige it is any less important than a need to have attractive clothes, good food, or a fine home. We do not feel, however, that it is more import-

ant than these other things.

The pain of not having the desired scraps of colored ribbon and the small badge will fade away. It will be soon forgotten as such things always are. What will not be forgotten are the years spent here at the University. The education and experiences one may gain here will remain long after minor social triumphs dim and lose their luster.

There is more to a university career than its social life. There is a fulfillment of educational promise, friendships to be made outside sororities, and the strength of character that comes from learning to take setbacks as well as victories. All of us must learn to accept these things as an essential part of growing up.

There is something else for everyone in such experiences. It is called a sense of values.

Athletic Easter Parade

The University has often been referred to as the "country club of the South." Although increased scholastic standards have done much to erase that tag, some of the pseudo-sophistication of the "country club" era still survives.

One of the hardy remnants of the carefree days of the past is the practice among students of wearing their best clothes to football games. People who would never think of wearing anything but khakis and dirty tennis shoes to class break out their most expensive finery for the football games.

This phenomenon is one which is peculiar to this campus. At other schools the standard garb for games

is the most casual dress. Psychologists could undoubtedly drum up a theory explaining it, but we don't particularly want to know why.

All we'd like to see is a football game where everyone looks like they're at a football game instead of an Easter parade.

Kernels

"Things they don't understand always cause a sensation among the English."—*Alfred de Musset*.

"Man is certainly stark mad; he cannot make a worm, and yet he will be making gods by the dozen."—*Michel de Montaigne*.



"You didn't use a man's deodorant."

The Kentucky Kernel

UNIVERSITY OF KENTUCKY

Entered at the post office at Lexington, Kentucky as second class matter under the Act of March 3, 1879. Published four times a week during the regular school year except during holidays and exams. SIX DOLLARS A SCHOOL YEAR

Bob Anderson, Editor

Mike Wenninger, Managing Editor Newton Spencer, Sports Editor

Bobbie Mason, Assistant Managing Editor

Alice Akin, Society Editor Stuart Goldfarb, Advertising Manager

Skip Taylor, Cartoonist

Perry Ashley, Business Manager Nicky Pope, Circulation

Friday News Staff

Rex Bailey, News Editor Logan Bailey, Associate

Newton Spencer, Sports

Dunn Drugs



PRESCRIPTION SERVICE

- Prompt
- Reliable

RAPID DELIVERY SERVICE

Fountain Service

Sandwiches and Short Orders
Open 7:30 a.m. to 9 p.m.

WILL DUNN DRUG COMPANY

Lime and Maxwell
4-4255

DELICIOUS STEAKBURGERS

For that evening meal or midnight snack. They're charcoal broiled . . . try them and you'll never leave them.



DOBBS HOUSE
SNACK BAR
330 Romany Road
Open 24 Hours



Watch Cleveland Browns
Sunday WLEX TV

USE YOUR
CHARGE ACCOUNT



Jantzen sportswear
for sportsmen

big sweater on campus

...ARGYLE SHAG

Any University man can tell you — Jantzen's Argyle Shag is "the look" for '60. We've got them in depth — big, beefy windjammer styles that display a whole new feeling for color combination. Soft, subtle tones are patterned into a brushed wool-and-mohair blend that out-shags any shag you've ever seen! 16.95

Visit the new 123 SHOP

REGISTER FOR FREE GIFTS
Nothing to buy

WIN
\$50 Gift Certificate
\$25 Gift Certificate
\$10 Gift Certificate

Angelucci & Ringo



USE 1st NATIONAL
CHARGE ACCOUNT

Openhouses, Danceland Fill Social Bill

By ALICE AKIN
Kernel Society Editor

These ballgame weekends are a bore. Everybody says the same thing—"Oh, just open house after the ballgame and Danceland tonight."

Well, that's all right with me, but it sure makes this column hard to fill up. Thank goodness for the few that are doing something else besides going to Danceland and the ballgame.

Take the TKE's for instance. They're starting off this afternoon with a jam session at the house with the Red Coats. While on the jam session bit, I heard the Sigma Nus are planning one tomorrow afternoon before the game.

The Phi Sigs are being original with a "Tussle in the Hay" tonight. All guests are insured by Lloyds of London. Meet at the house at 7:30 and don't forget tomorrow night—a hi-fi party after the game.

Also tussling in the hay tonight are the AGE's. In fact they're tussling all the way to High Bridge. (How exhausting!)

Speaking of exhaustion, I think it has set in on the whole campus. My massive frame certainly has had its share which might explain why the column has become such a stale bit of literature.

Don't fret though, as soon as

something comes up that is worth tearing apart, things will perk up. In the meantime let's go back to this thing called weekend.

Tomorrow, bright and early—well early anyway—campus leaders will board buses, cattle trucks, or tricycles to make their way down to Camp Bingham for the annual leadership conference.

Leadership chairman Anne Shaver promises a good time to all those who are planning the trip. She plans to cover all the points of leadership and urges everyone to take plenty of blankets.

Guess who's coming to our charming campus October 21? The Brothers Four! Can't believe we're actually getting some celebrities here, but Lances and Keys are going together on this concert and they're expecting a big turnout for the occasion. No doubt some people will still prefer Danceland.

Even the SUB has become concerned with people who want to dance and they're sponsoring ballroom dancing instruction beginning Monday around 7 p.m. Of course the 4-H club can't participate because they're having a picnic Monday at Blue Grass Park.

Did you know that the KA's have a colored television set? I've

been hearing that the place is packed every night with TV fans or maybe that's just the excuse they use to get over there and swing out a tad.

Well, you know that this is about all for now. When the news gets so bad we have to start talking about TV for entertainment it's time to sign off.

ENGAGED

Annette Adkins to John Callahan, Fiji.

MARRIED

Carolyn Shrouse to Jim Williams, Fiji.

Kentucky THEATRE

HELD OVER!
2nd Big Week

Fun and Romance On the Isle of Capri!

CLARK GABLE
SOPHIA LOREN
VITTORIO DE SICA
IT STARTED IN NAPLES
Technicolor

OPEN DAILY 1:30 P.M.
ASHLAND
Euclid Avenue—Chevy Chase
TODAY AND SATURDAY!
"BELLS ARE RINGING"
Judy Holliday—Dean Martin
"WALK LIKE A DRAGON"
Jack Lord—Nobu McCarthy

2 Italian Operas To Be Presented In Concert Series

The New York Opera Festival performers will present two operas at 8:15 p.m. Monday in Memorial Coliseum.

They are the one-act opera "Cavalleria Rusticana" by Pietro Mascagni and "Pagliacci," a two-act drama by Ruggero Leoncavallo.

It is the second presentation of the season in the Lecture and Concert Series schedule.

It Pays To Advertise In
The Kentucky Kernel

LEVAS
Restaurant
DOWNTOWN
119 South Limestone
Open Until 1:00 a.m.



SPECIAL STUDENT PRICES

ALL SEATS \$1.25 ANY TIME
Choice Seats Available For Each Performance

From M-G-M
BEN HUR
WILLIAM WYLER'S

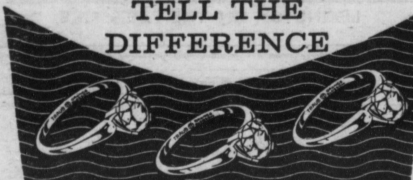
EARLY BIRD EVENING SHOW
Every Thurs. Night
At 6:30 p.m.

STRAND THEATRE
BEN ALI
PHONE 4-4370
NOW SHOWING

RELEASING COLOR
THE MAGNIFICENT
GORDON SCOTT - JACK MURRAY - BETTE ST. JOHN
CO-FEATURE

"CONSPIRACY OF HEARTS"
LILLI PALMER
ALBERT LIEVEN
STEVIA SYMS

?
COULD YOU TELL THE DIFFERENCE



These three rings are identical in outward appearance and diamond weight. But their prices differ widely—because of variations in the quality of the stones . . . variations we will be happy to show you. This is one of the reasons why so many people trust our guidance when they select their diamonds . . . and why we have been named "Master Jewelers" by the makers of

Orange Blossom Diamond Rings

Victor Bogart Co.
Diamond Jewellers
Manufacturers of Jewelry



127 West Main Street

Phone 2-6230

DRIVE-IN DIRECTORY

CIRCLE U.S. BY-PASS AT WINCHESTER RD.
Starts 7:00 — Admission 75c
Sinners Beware! Elmer Gantry is Here . . . With His Whiskey and His Women!
"ELMER GANTRY" (7:06 & 11:19)
Burt Lancaster—Jean Simmons
Sinclair Lewis Novel Now 1960's Most Controversial Movie
ALSO — Ernest Borgnine in "THE RABBIT TRAP" (9:31)

FAMILY On the BELTLINE between WINCHESTER and LIBERTY RDS.
Starts 7:00 — Admission 75c
20,000,000 Readers Made It the Best Selling Novel Of All Time!
"GOD'S LITTLE ACRE" (7:06 & 12:16)
Robert Ryan—Tina Louise
ALSO — The Screen's Mightiest Comedians
"THE VIKINGS" (19:06)
Kirk Douglas—Tony Curtis (Technicolor)

BLUE GRASS LEX-GEORGISTOWN PI. U.S. HWY #25
Starts 7:00 — Admission 65c
Hold Over!
The Naked Shameful Life of A "Good Time Girl"
"WHY MUST I DIE"
Terry Moore—Debra Paget
Only the motion picture screen would dare tell this shocking story!
ALSO—Forbidden Love from the Author of "Suzie Wong"
"THE WIND CANNOT BLOW"

TONIGHT AND SATURDAY D LEXINGTON DRIVE-IN U.S. 27 NICHOLASVILLE RD. (All Color) FEATURE

JUNGLE SAVAGERY!
MARACAIBO
CORNEL WILDE - JEAN WALLACE
TECHNICOLOR

James STEWART
Arthur KENNEDY
Julia ADAMS
BEND OF THE RIVER
A REVEREND DISSENTATION
Technicolor

Danger... Excitement... Romance—Sweep the Screen!
GREGORY PECK ANN BLYTH
A REX BEACH'S
"THE WORLD IN HIS ARMS"
COLOR BY Technicolor

FOR THE FIRST TIME...
THE SHOCKING TRUTH!
THE FBI STORY
TECHNICOLOR
JAMES STEWART
VERA MILES
A HANCOCK BROS. PRODUCTION

Sunday and Monday
Paramount Presents
THE YOUNG CAPTIVES
STEVEN MARLO
LUANA PATTON

STARTS 7:00—ADMISSION 75c
CIRCLE U.S. BY-PASS AT WINCHESTER RD.
ENDS SATURDAY
Don't Miss the Most Controversial Movie Of Our Time!!!

BURT LANCASTER JEAN SIMMONS
"ELMER GANTRY"
SUNDAY
COMEDY SPIKED WITH FARCE!
—N. Y. Times
First Lexington Showing
PETER SELLERS
"The Battle of the Sexes"
A Continental Distributing Inc. Release

COMING SOON!
BING goes to college with a BANG!
BING CROSBY FABIAN
TUESDAY
WELD NICOLE MAUREY
HIGH TIME
CINEMASCOPE • COLOR BY DE LUXE
Produced by CHARLES BRONCKETT - BLAKE EDWARDS
Directed by CHARLES BRONCKETT - BLAKE EDWARDS
Screenplay by TOM WALDMAN & FRANK WALDMAN - CARSON KANNI
Based on a story by TOM WALDMAN & FRANK WALDMAN - CARSON KANNI

COMING SOON!
BING goes to college with a BANG!

BING CROSBY FABIAN
TUESDAY
WELD NICOLE MAUREY

HIGH TIME
CINEMASCOPE • COLOR BY DE LUXE
Produced by CHARLES BRONCKETT - BLAKE EDWARDS
Directed by CHARLES BRONCKETT - BLAKE EDWARDS
Screenplay by TOM WALDMAN & FRANK WALDMAN - CARSON KANNI
Based on a story by TOM WALDMAN & FRANK WALDMAN - CARSON KANNI

FAMILY On the BELTLINE between WINCHESTER and LIBERTY RDS.
ENDS SATURDAY
20 Million Read It—Now See It!
"God's Little Acre"
7:06 and 12:16
"The Vikings" 10:06

SUNDAY
An Open Invitation From . . . M.M.
"LET'S MAKE LOVE"

Dedicated to the NEW Monroe Doctrine!
MARILYN MONROE
YVES MONTAND
JERRY WALD'S
"LET'S MAKE LOVE"

MARILYN MONROE
YVES MONTAND
JERRY WALD'S
"LET'S MAKE LOVE"
TONY RANDALL - FRANKIE VAUGHAN
Directed by GEORGE CLUON - NORMAN KRASNA
Additional Directed by HAL ROOPER
CINEMASCOPE COLOR BY DELUXE

Wildcats Anticipate Breather Against Marshall Saturday

Diverse objectives mark the Kentucky-Marshall clash tomorrow night at Stoll Field.

Kentucky will be anticipating a breather while for the Green—it's the game of the year.

If Kentucky takes Marshall too lightly, it could mean trouble for the Wildcats because Marshall is described as a team on the way back after dismal seasons the last two years.

Coach Blanton Collier dispels any fears of Marshall being taken lightly. He said earlier this week, "This is the type of ball club that can give you a real close game if they taste success early. We don't intend to let up."

"This is just as important a game to us as it is to them and I'm expecting an aggressive, keyed-up opponent. Coach (Charlie) Snyder will see to that as he would like nothing better than to upset us."

Snyder, a former UK assistant, was hired by Marshall two years ago to rebuild the school's football fortunes.

This year, the Green have a 1-2 record, losing to Bowling Green, 14-7, and Wittenberg, 3-0, while beating Toledo, 14-0.

Millard Fleming and Eddie Wright lead the ground attack for Marshall. The two are averaging five yards per carry thus far.

The team's quarterback, Ralph May, has completed 14 of 30 passes for 184 yards.

The Wildcats will be hampered by injuries to Charlie Sturgeon, Mel Chandler, and Bob Hunt. Sturgeon, Kentucky's leading ground gainer, is definitely out Saturday while Chandler and Hunt are doubtful performers.

Gary Steward will replace Sturgeon at halfback.

Leading Kentucky again this week will be Quarterbacks Jerry Woolom and Tom Rodgers with Jerry Eisaman again in a reserve role.

Wildcat Runners After First Win

Kentucky's cross country team goes after its first win at 11 a.m. tomorrow on the Picadome Course.

The team lost its first encounter to Miami (Ohio) last week.

CLASSIFIED

Advertising rates—3 cents per word; 17 word minimum; 25 percent discount if ad runs all week.

Copy deadline—
For Tuesday edition—Monday, 3 p.m.
Wednesday edition—Tuesday, 2 p.m.
Thursday edition—Wednesday, 3 p.m.
Friday edition—Thursday, 4 p.m.
Phone Beverly Pedigo—3386

FOR SALE

FOR SALE—UNDERWOOD PORTABLE TYPEWRITER, slightly used. Apply Kernel business office. Phone 2487. 2758t

FOR RENT

FOR RENT—Comfortable furnished apartments. Private entrances and baths. Utilities paid. Walking distance from town and university. Apply 250 So. Limestone. 2758t-b

FOR RENT—3 room apartment, private bath furnished, all utilities paid. \$75 per month. Phone Karl Anderson, 6-8497. 324 Preston Avenue. 708t

FOR RENT—Male students or faculty member. Large first floor room in private house. Near bath, furnace. Breakfast furnished. 430 East Maxwell St. Garage for rent across street. 404t-b

LOST

LOST—Yellow woolen skirt at Columbia and Rose. \$5.00 Reward. Ph. 2166. 602t

LOST—Billfold, Tuesday night, between SUB and Cooperstown. Phone 6-2210 or 232 Sycamore Road. Finder may keep money. 701t-b

MISCELLANEOUS

TENNIS RACKETS RESTRUNG—Overnight service. New Wilson, Davis and Bancroft equipment at special student rates. Pickup and delivery at Kennedy Book Store. LARRY'S TENNIS SERVICE. Phone 6-6147. Clip this ad. 27519t-b

TYPIST—Experience on thesis, dissertations and theses. Responsible, accurate and fast. Phone 2-2729. Mrs. Wedding. 604t

SATELLITES—Rhythm and Blues Dance Combo. Available for campus consumption. Phone 7-7043 or 2-3785. 401t

FLY—Easy to learn how. Be a pilot of the future. Instructor and finest airplane around available. Fly, it costs less with the Lexington Flying Club. Phone 2-8544 in the evenings. 704t

SATURDAY DANCING

Howard Bingham
and the
UPSETTERS

Admission \$1.00 Per Couple
8:30 'til 12:30 p.m.

SUNDAY DANCING

Featuring
Little Ennis
and the
TABLE TOPPERS

Admission \$1.00 Per Person
7 'til 11 p.m.

JOYLAND *Casino*
LEXINGTON ON THE PARIS PIKE

STUDENT SPECIAL

Corduroy Suits
Continental and Ivy
Styling
\$22.95 and up

Bulky Knit Shawl
Collar Sweaters
Latest Fall Tones
\$6.95 and up

Latest in Fall and
Winter Outerwear
Jackets, Surcoats, ¾ and
Full Length Coats



Formal Rentals

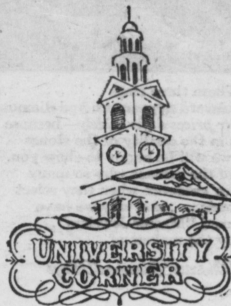
Discounts to Groups



Phillip Gall & Son

117 S. Upper

Phone 2-0652



THE INVESTMENT'S
THE THING

Wherein to catch the eye of the ladies, it is in this three-piece natural shoulder suit in the new, very masculine color of Antique Olive. A large return in wearing time is bound to be realized, especially since this suit is so reasonably priced and so good looking—in tweeds, hopsacks, and worsteds.

\$60 and \$65

VINTAGE TONES
OR ANTIQUE OLIVE



Yanks Bomb Pirates 16-3; Mantle Slams Two Homers

PITTSBURGH, Oct. 6 (AP) —The New York Yankees bombed six Pittsburgh pitchers for 19 hits, including a pair of homers by Mickey Mantle, in crushing the Pirates 16-3 today. This tied the World Series at 1-1.

The two homers, driving in five runs, and a seven-hit, seven-run spree in the sixth inning, wrecked the Pirates. The Yanks' hit total was only one behind the record of 20 set by the New York Giants in 1921 and the St. Louis Cardinals in 1946.

Despite the big cushion his mates gave him, right-hander Bob Turley, shaky all the way, couldn't finish the game. He was replaced by Bobby Shantz with one out in the ninth after yielding 13 hits and three runs.

The Pirates had scored two runs in the ninth and had two men on. Shantz then ended the game by getting Don Hoak to hit into a double play.

Pittsburgh was trailing 3-1 and very much in the ball game against Turley when Mantle unloaded his first homer—and first hit of the series—against the left-handed Fred Green in the fifth inning. Green had just relieved starter Bob Friend. Mantle scored behind Gil McDougald, who had walked.

The Yankees unloaded seven hits for as many runs against Green. Clem Labine and George (Red)

WEDNESDAY'S I-M RESULTS

Deacon 6, Tappa Keggs 0.
BSU 14, Newman Club A 0.
ME 2, Barristers 0 (forefeit).
Scott's Raiders 2, CE 0 (forefeit).

Wesley Foundation 3, AFROT 0 (forefeit).

CSF and the Swamp Rats both took losses when neither team showed up.

Witt in the sixth inning. Elston Howard, sent behind the plate in one of Manager Casey Stengel's three lineup changes, and Bobby Richardson each rapped out two hits in the big inning.

Then Mickey gave the 37,308 Forbes Field spectators a thrill by blasting a three-run, 475-foot homer over the center field wall.

Mantle's 13th series homer put him only two behind Babe Ruth's record of 15.

For the personal gift . . . Your Portrait

Spengler Studio
N. E. Corner of Main & Lime
PHONE 2-6672



Special Offer!

This beautiful 2-seat re-conditioned Ercoupe for sale.

NO DOWN PAYMENT
Only \$125 per month
300 mile range
100 m.p.h. cruising speed
2-way radio

Practical for business! Excellent for pleasure! Test fly it today.

BOHMER Flying Service
Blue Grass Field
Dial 4-5146

FRATERNITY • SORORITY HEADQUARTERS

NOW AVAILABLE LOCALLY
PADDLES • BEER MUGS
SHIRTS • FAVORS
OFFICER & CHAPTER GUARDS

Monogram lapel buttons and
lavaliers in stock

P. Edw. Villemiot
JEWELER-SILVERSMITH

105 W. Main St. Phone 2-3210
368 Southland Dr. Phone 7-7321



Dobbs House Luau

Where every meal becomes a
very special occasion . . .

Served in the utmost of Polynesian excellence

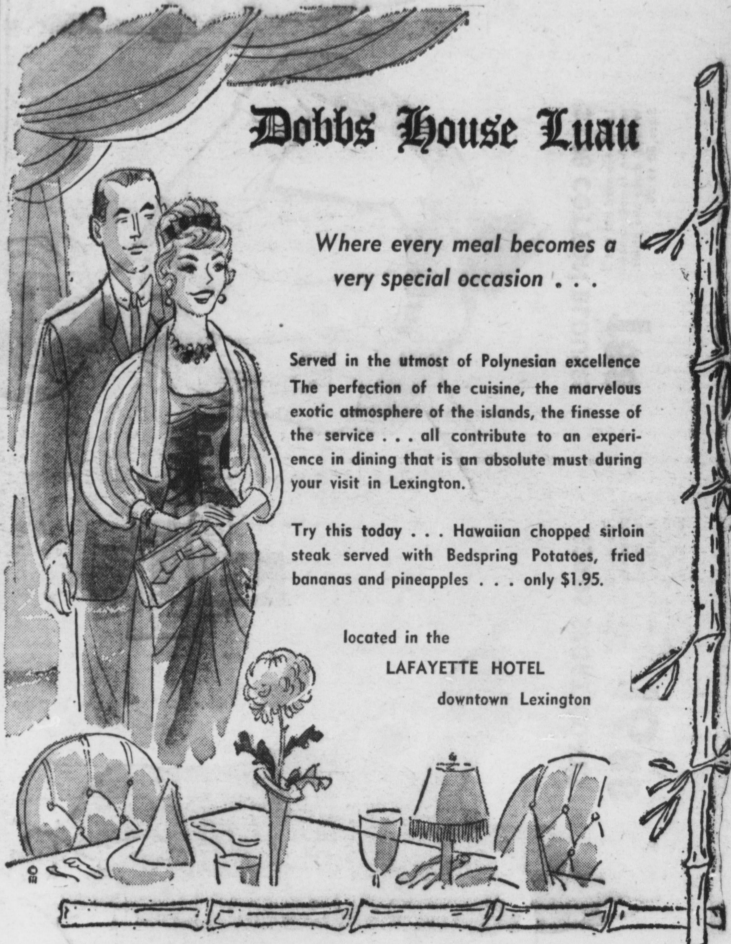
The perfection of the cuisine, the marvelous exotic atmosphere of the islands, the finesse of the service . . . all contribute to an experience in dining that is an absolute must during your visit in Lexington.

Try this today . . . Hawaiian chopped sirloin steak served with Bedspring Potatoes, fried bananas and pineapples . . . only \$1.95.

located in the

LAFAYETTE HOTEL

downtown Lexington



Dance At . . .

● **DANCELAND** ●
Old Frankfort Pike

THIS FRIDAY

Music By

Charlie Bishop

8:00 To 12:30

\$2.00 Per Couple

Also Available For Parties

Impress Your Date—
Take Her To . . .

LA FLAME RESTAURANT

941 Winchester Rd.

"FINE FOODS, LOUNGE
AND DANCING"

Church of Christ

(UNIVERSITY HEIGHTS)
328 Clifton Avenue

WELCOME TO ALL SERVICES

SUNDAY:

9:45 a.m. Bible Classes
10:45 a.m. Morning Worship
6:00 p.m. Evening Worship

WEDNESDAY:

7:30 p.m. Bible Study

BARNEY KEITH, Evangelist
Telephone 3-2989 or 7-5588

ONE BLOCK FROM ROSE ST.
ON CLIFTON

KEENELAND RACE COURSE

Silver Anniversary Meeting

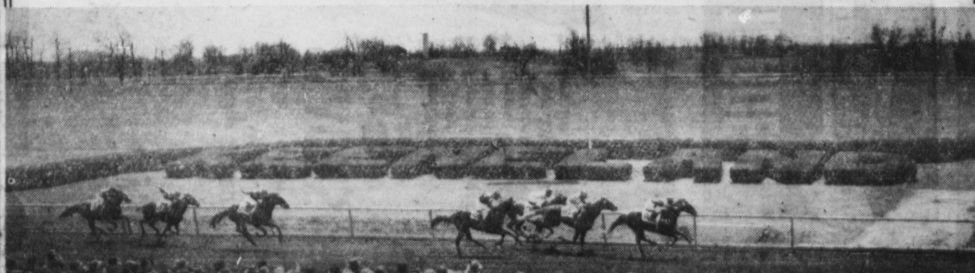
OCTOBER 8-22

(No Racing on Mondays)

● **First Post Time Daily — 2:00 p.m. EST**

● **General Admission — \$1.35 Reserved Seats \$1.20 (additional)**

Lexington Transit Bus and Lexington Yellow Cab Service To and From Track



WELGO GET TOBER SALE!

Greatest

We're Out To Break All Previous October Sales Records!



\$10.98 Fur Blend
Sweaters
488

Sharp Necklines, Slip-on sweaters and Cardigans in whites, pastels and dunks. Sizes 34 to 42.

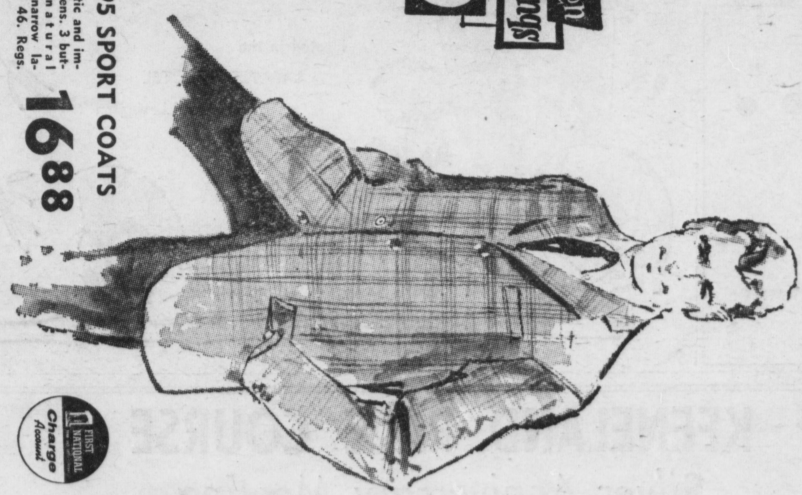
\$7.98 100% Wool
SKIRTS
388

Plaids and tweeds with lined seat and some with leather belts. Sizes 20 to 30.



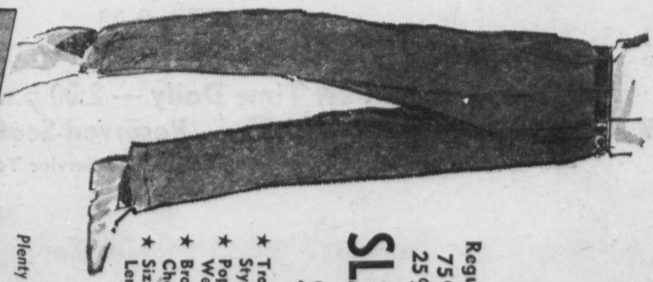
\$3.98 COTTON BLOUSES
188

Labels removed but you'll recognize famous maker. Whites, dunks and prints. Sizes 30 to 38.



\$29.95 SPORT COATS
1688

Fine domestic and imported wools, 3 button model, not a r a l shoulders, narrow lapels. 35 to 46. Regs. and longs.



Regular \$10.00
75% Wool -
25% Acrilan
SLACKS
\$5

- * Traditional Ivy Styling!
- * Popular Hopsack Weave!
- * Brown, Cambridge, Charcoal, Olive!
- * Sizes 29 to 38.
- * Lengths 29 to 34!

Plenty Free Parking!

WELGO TRADERS
PIONEERS IN MODERN SHOPPING
Wincennes, Ky. * Southland D.
WELGO TRADERS
WELGO TRADERS
WELGO TRADERS

