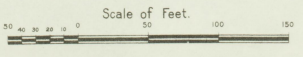
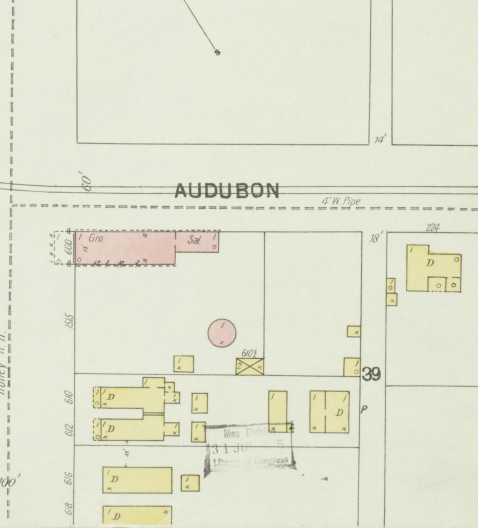
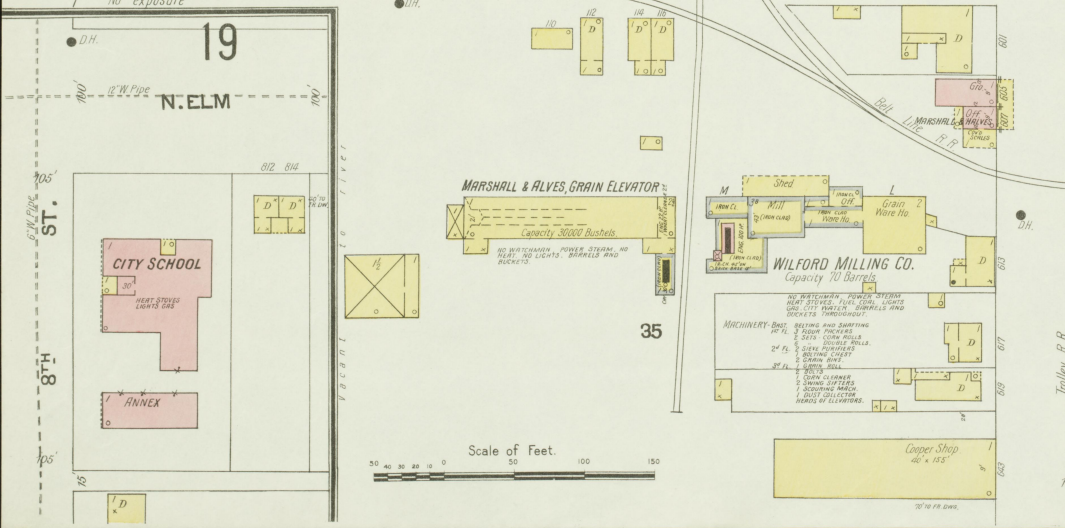
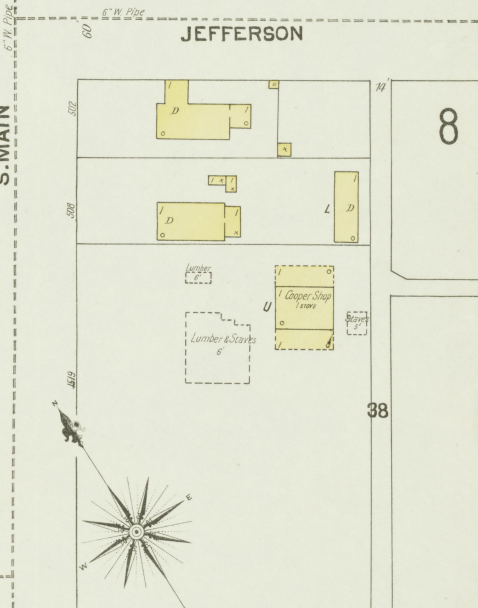
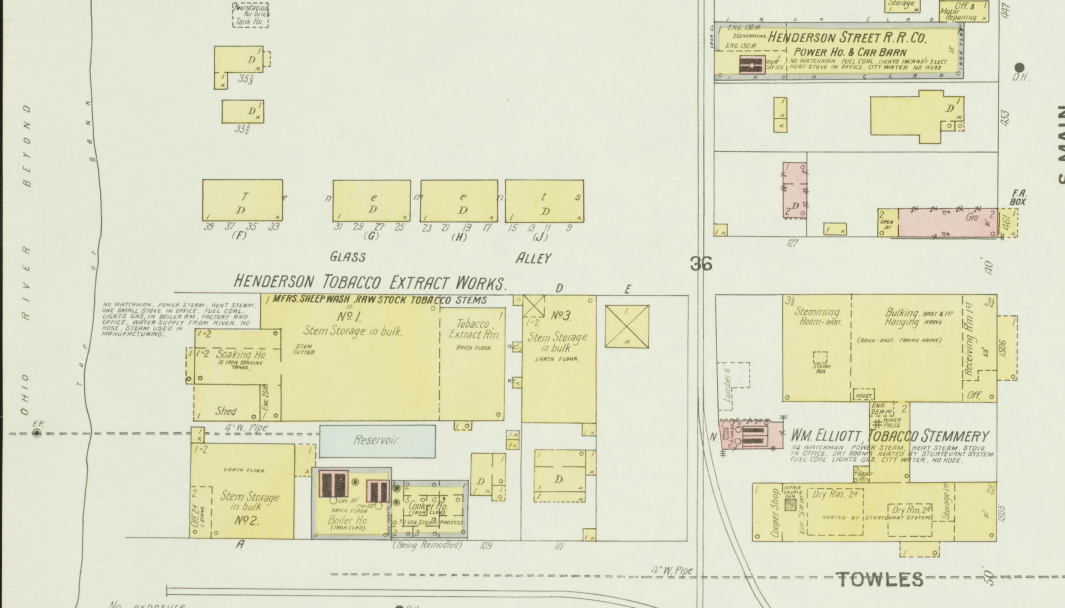
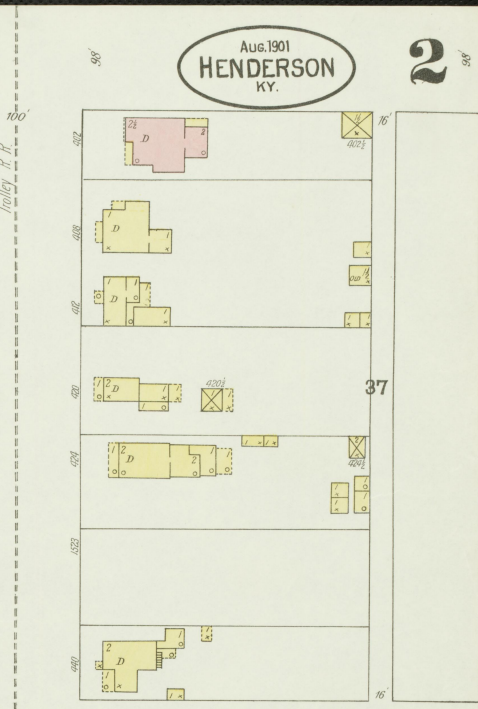
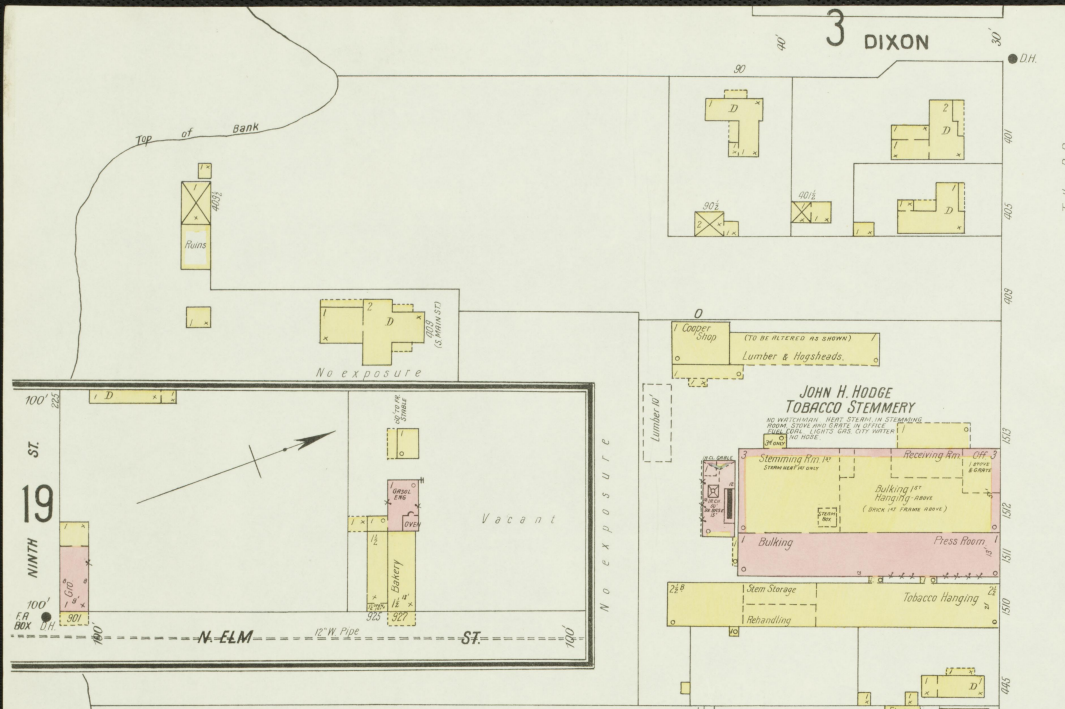
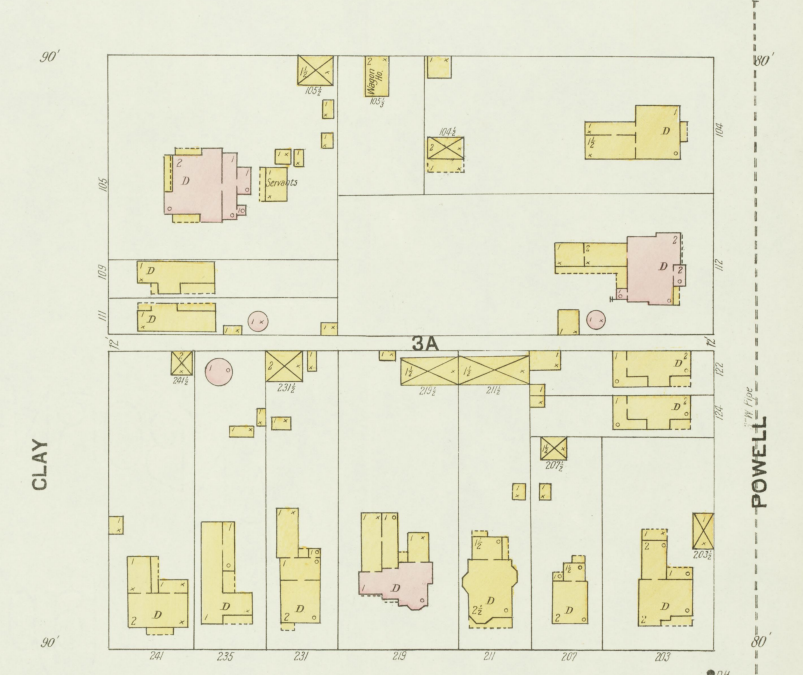
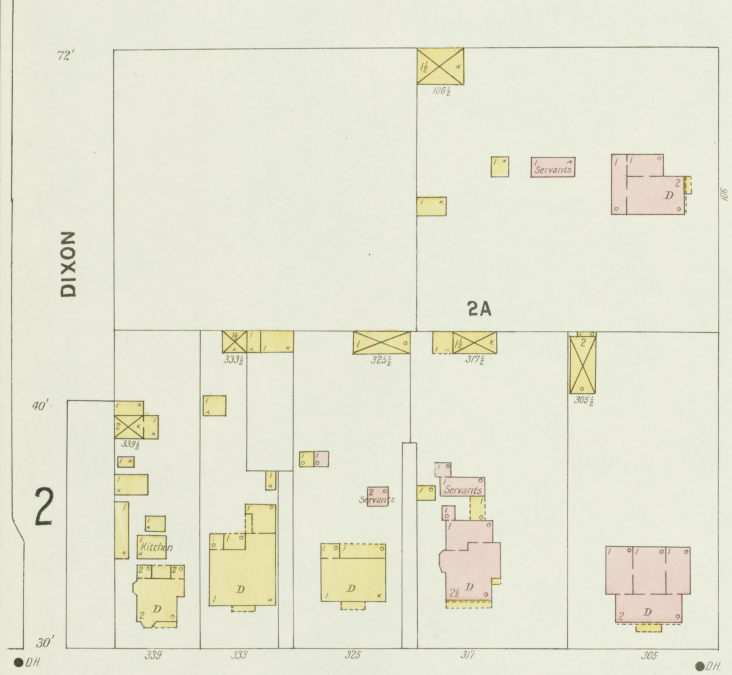
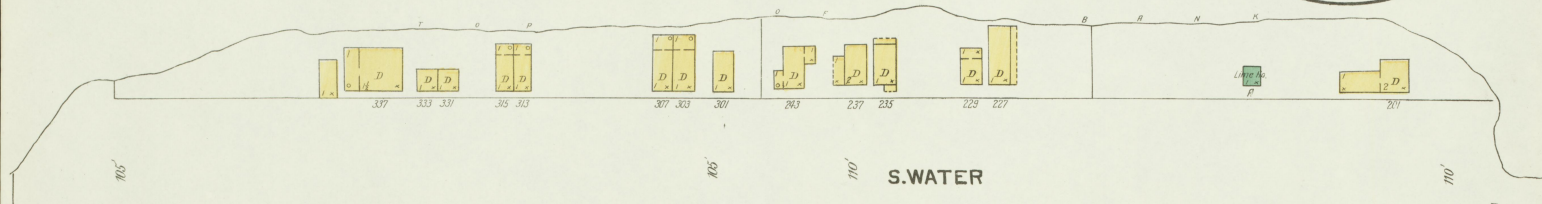


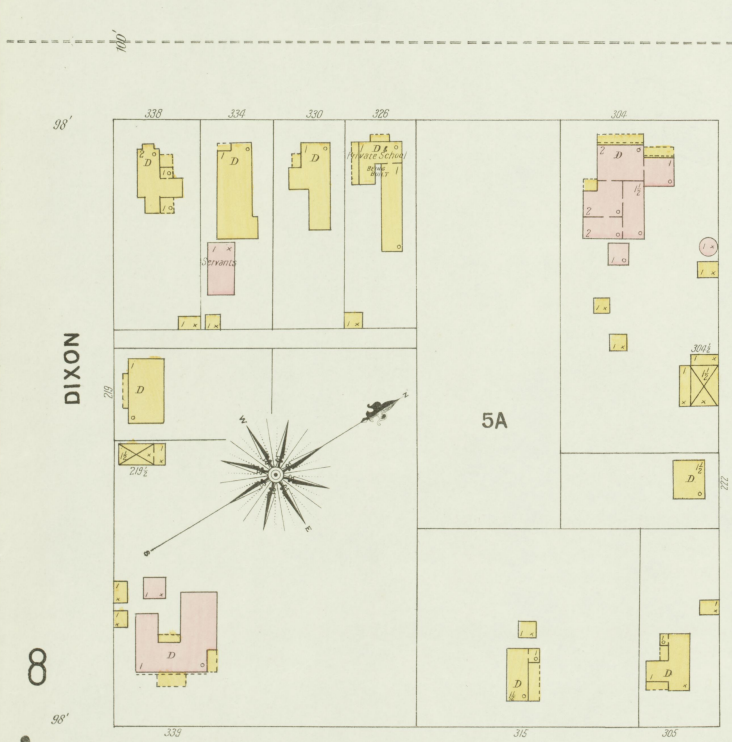
3 DIXON



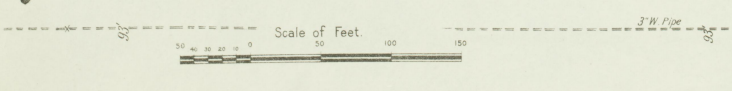
1A



6" W Pipe S. MAIN



3" W Pipe 6" W Pipe S. ELM



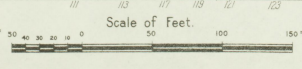
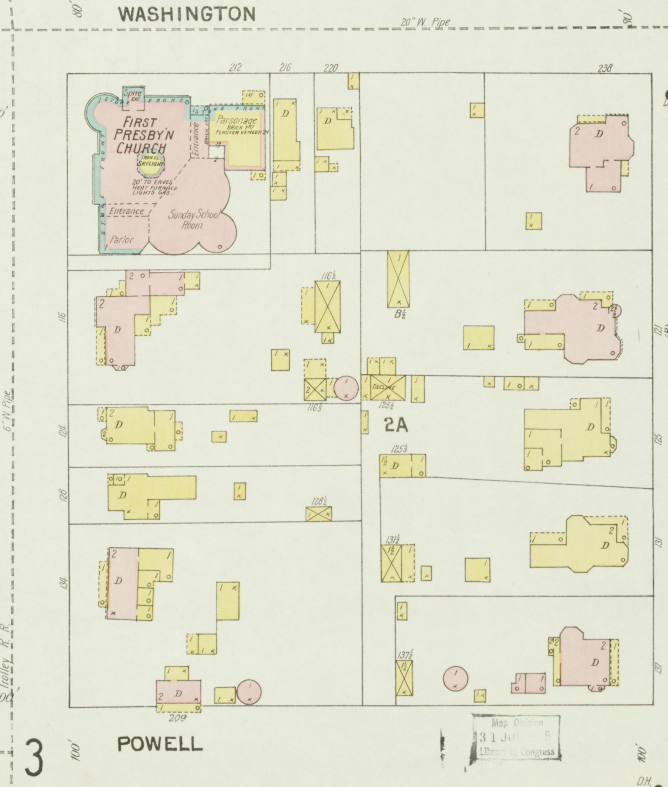
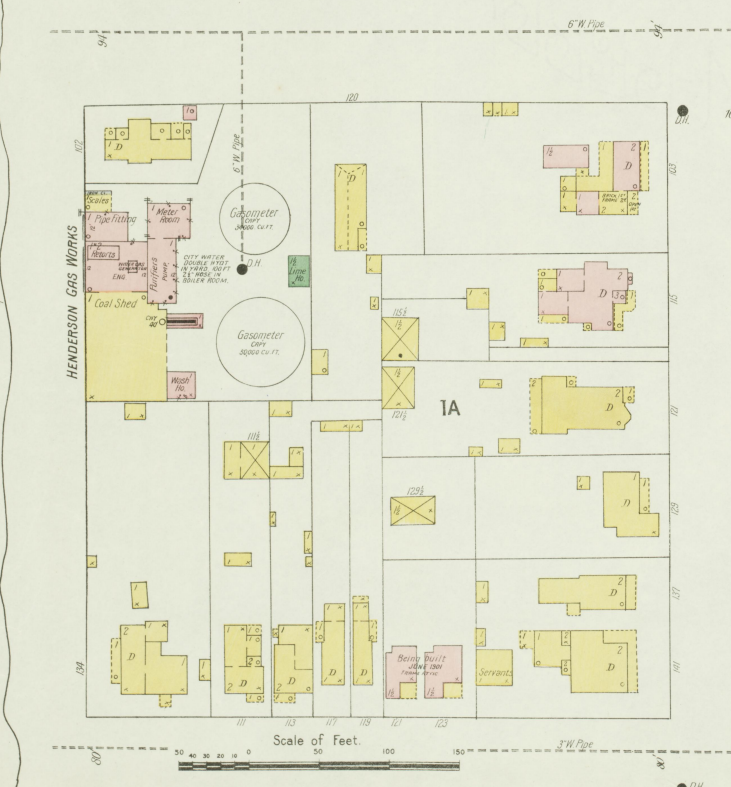
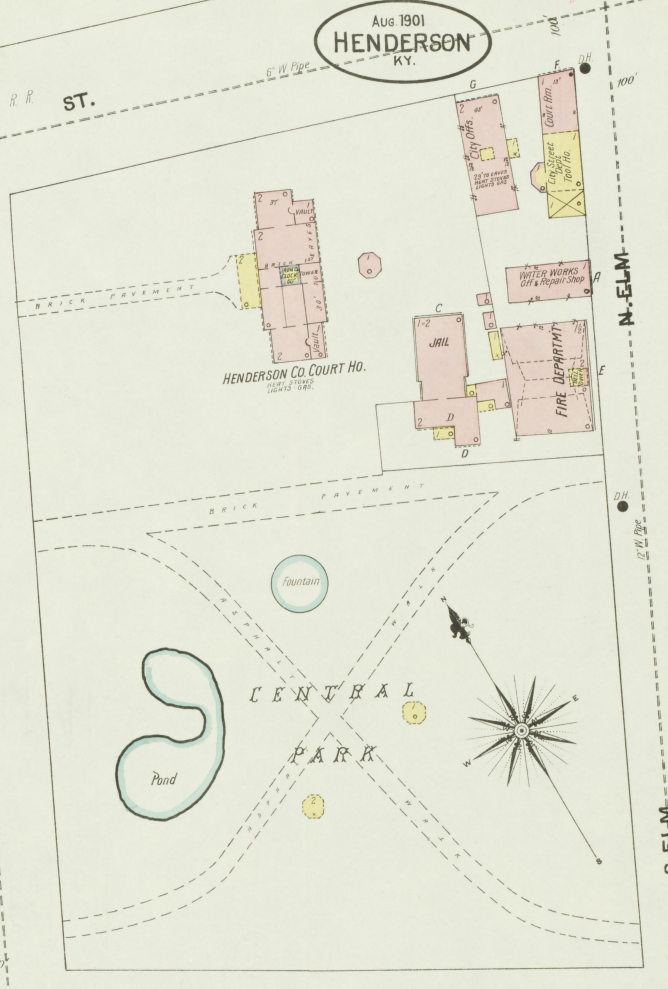
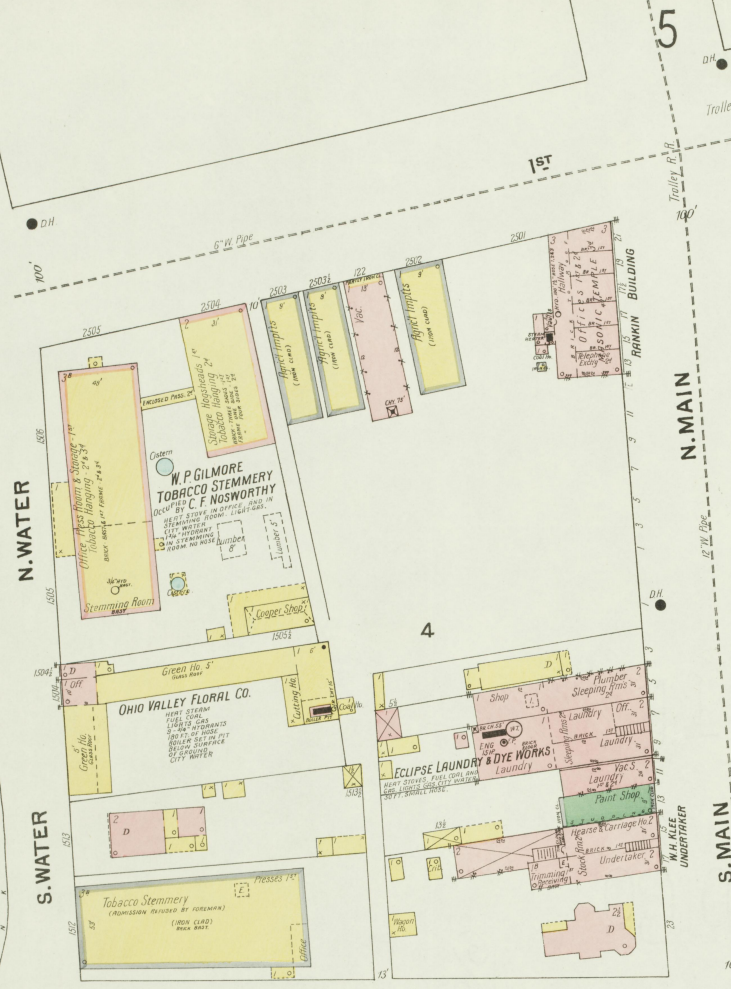
Map Printed
1 JUL 1905

AUG 1901
HENDERSON
KY.

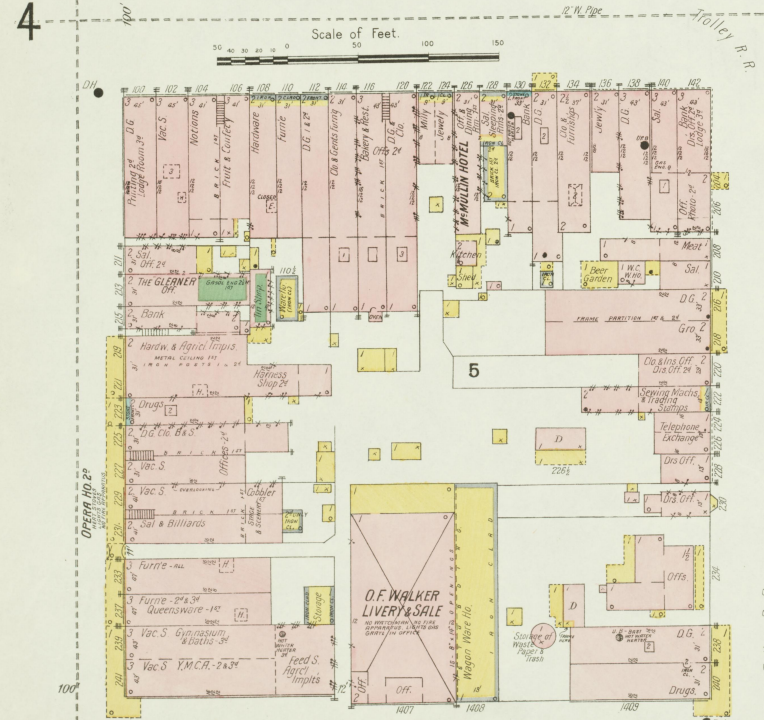
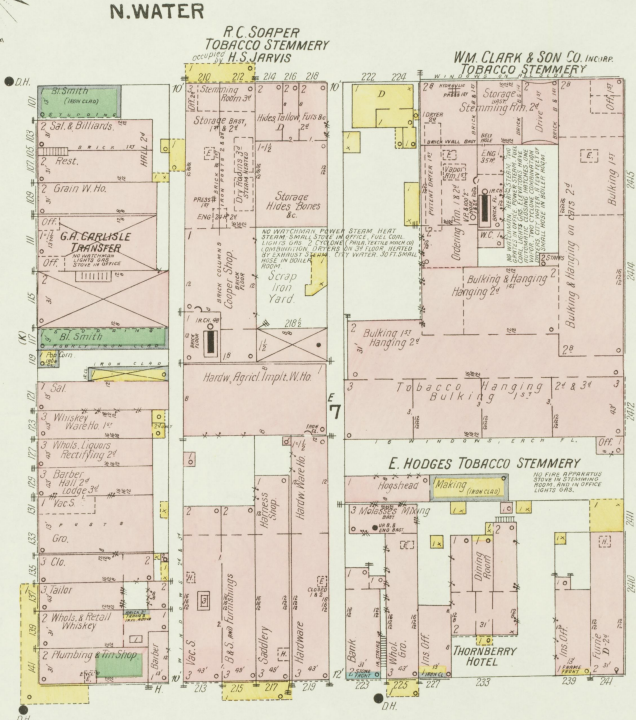
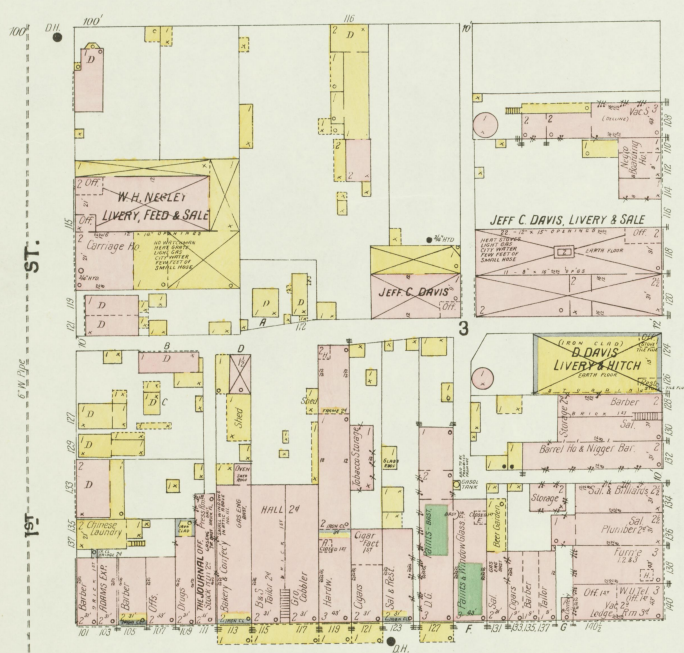
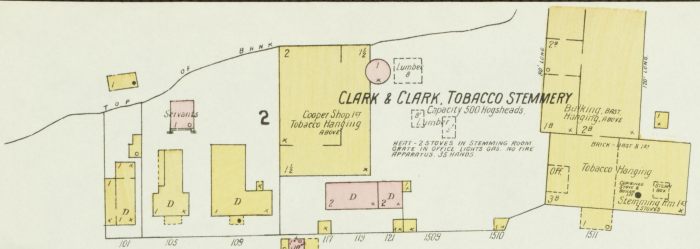
4

14

10

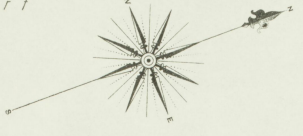


3



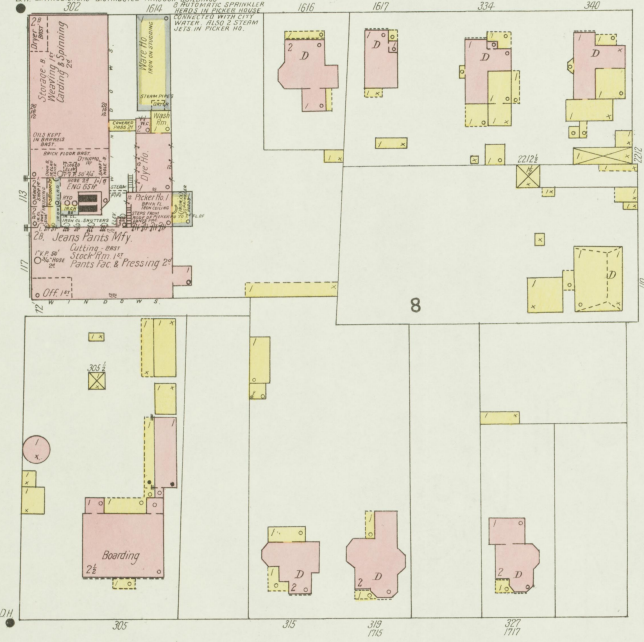
AUG. 1901
HENDERSON
KY.

Paved Wharf



HENDERSON WOOLEN MILLS CO.

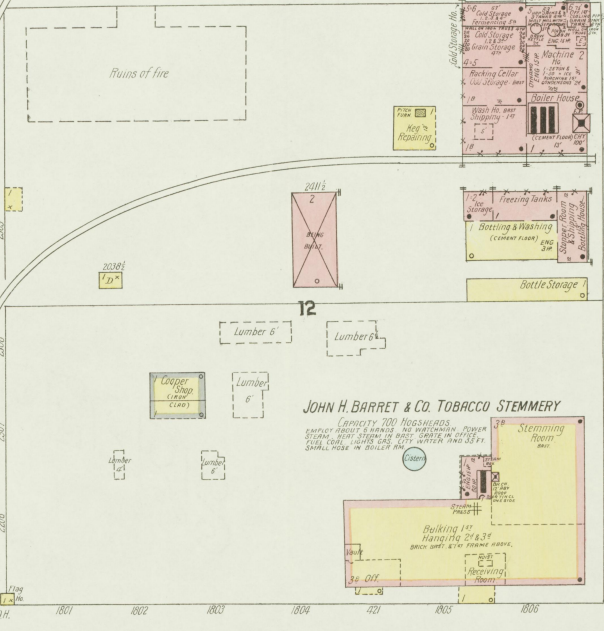
INDICATE MECHANICAL, PLUMBING, ELECTRIC, GAS, HEATING, HOISTS, ELEVATORS, PUMPS AND WIND SYSTEMS, ETC. COOKS, LAUNDRY, REFRIGERATORS, STEAM HEATING, ETC. SHOWS PLANT, TANKS, PIPES, VALVES, ETC. IN RED. SHOWS STAIRS, ESCALATORS, ETC. IN BLUE. SHOWS ROOFS AND ROOFING IN GREEN. SHOWS FLOORS AND FLOORING IN YELLOW. SHOWS WALLS AND PARTITIONS IN PINK. SHOWS DOORS AND WINDOWS IN BLACK. SHOWS LIGHTS AND FIXTURES IN WHITE. SHOWS FURNITURE AND EQUIPMENT IN RED. SHOWS TREES AND PLANTS IN GREEN. SHOWS RAILS AND TRACKS IN BLACK. SHOWS BRIDGES AND STRUCTURES IN BLACK. SHOWS UTILITIES AND SERVICES IN RED. SHOWS LANDSCAPE AND GARDENS IN GREEN. SHOWS FENCES AND BARRIERS IN BLACK. SHOWS SIGNAGE AND MARKINGS IN RED. SHOWS OTHER FEATURES IN VARIOUS COLORS.



N. WATER

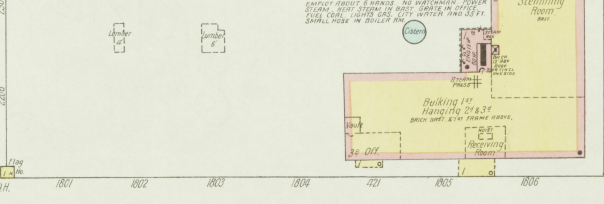
HENDERSON BREWING CO.

INDICATE MECHANICAL, PLUMBING, ELECTRIC, GAS, HEATING, HOISTS, ELEVATORS, PUMPS AND WIND SYSTEMS, ETC. COOKS, LAUNDRY, REFRIGERATORS, STEAM HEATING, ETC. SHOWS PLANT, TANKS, PIPES, VALVES, ETC. IN RED. SHOWS STAIRS, ESCALATORS, ETC. IN BLUE. SHOWS ROOFS AND ROOFING IN GREEN. SHOWS FLOORS AND FLOORING IN YELLOW. SHOWS WALLS AND PARTITIONS IN PINK. SHOWS DOORS AND WINDOWS IN BLACK. SHOWS LIGHTS AND FIXTURES IN WHITE. SHOWS FURNITURE AND EQUIPMENT IN RED. SHOWS TREES AND PLANTS IN GREEN. SHOWS RAILS AND TRACKS IN BLACK. SHOWS BRIDGES AND STRUCTURES IN BLACK. SHOWS UTILITIES AND SERVICES IN RED. SHOWS LANDSCAPE AND GARDENS IN GREEN. SHOWS FENCES AND BARRIERS IN BLACK. SHOWS SIGNAGE AND MARKINGS IN RED. SHOWS OTHER FEATURES IN VARIOUS COLORS.

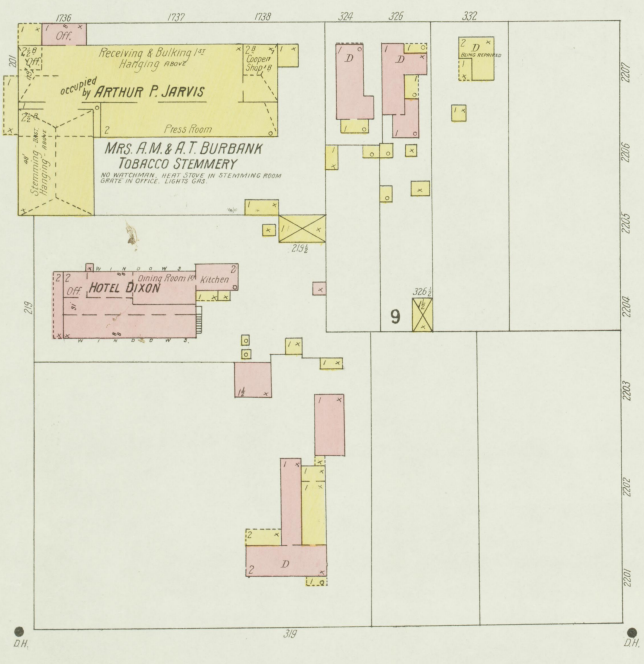


JOHN H. BARRETT & CO. TOBACCO STEMMERY

CAPACITY 700 HOGSHEADS. INDICATE MECHANICAL, PLUMBING, ELECTRIC, GAS, HEATING, HOISTS, ELEVATORS, PUMPS AND WIND SYSTEMS, ETC. COOKS, LAUNDRY, REFRIGERATORS, STEAM HEATING, ETC. SHOWS PLANT, TANKS, PIPES, VALVES, ETC. IN RED. SHOWS STAIRS, ESCALATORS, ETC. IN BLUE. SHOWS ROOFS AND ROOFING IN GREEN. SHOWS FLOORS AND FLOORING IN YELLOW. SHOWS WALLS AND PARTITIONS IN PINK. SHOWS DOORS AND WINDOWS IN BLACK. SHOWS LIGHTS AND FIXTURES IN WHITE. SHOWS FURNITURE AND EQUIPMENT IN RED. SHOWS TREES AND PLANTS IN GREEN. SHOWS RAILS AND TRACKS IN BLACK. SHOWS BRIDGES AND STRUCTURES IN BLACK. SHOWS UTILITIES AND SERVICES IN RED. SHOWS LANDSCAPE AND GARDENS IN GREEN. SHOWS FENCES AND BARRIERS IN BLACK. SHOWS SIGNAGE AND MARKINGS IN RED. SHOWS OTHER FEATURES IN VARIOUS COLORS.

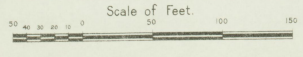


N. MAIN



N. ELM

Map drawn
1 JUL 1905
Thos. H. Longness



ST. Tracing traffic, approach to bridge

Track to be elevated, 15 ft.

12' W. Pipe

Henderson Bridge

Incline to Wharf Boat

ST. 3rd

3rd

5

ST. 2nd

5th

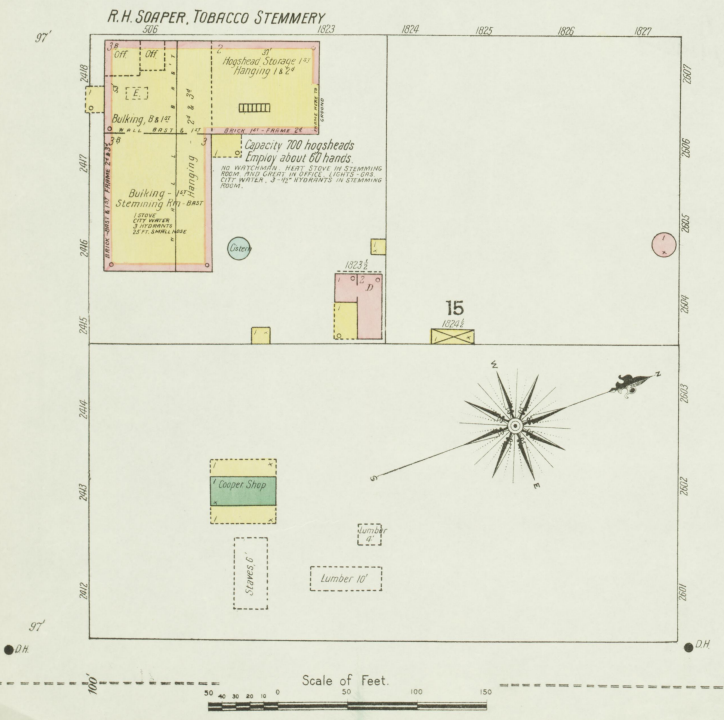
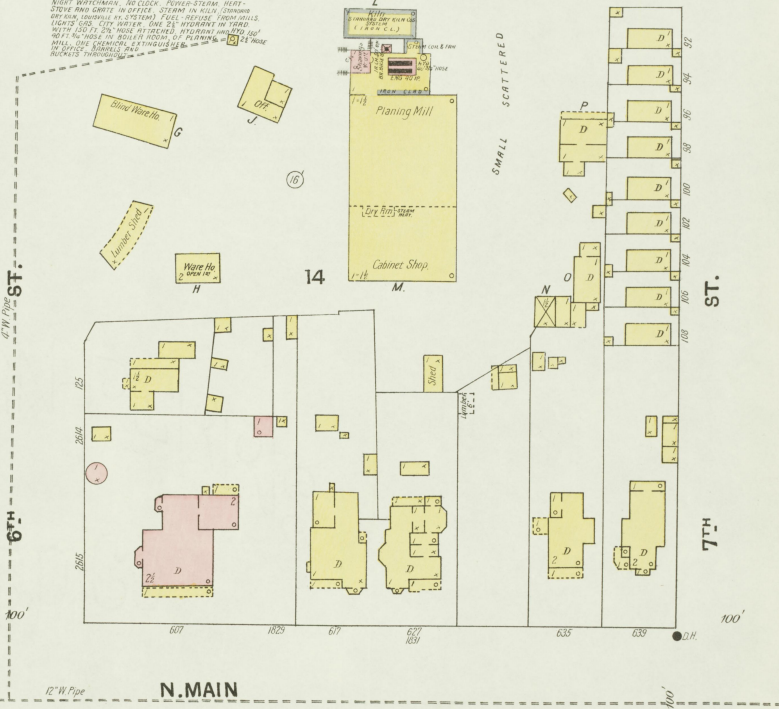
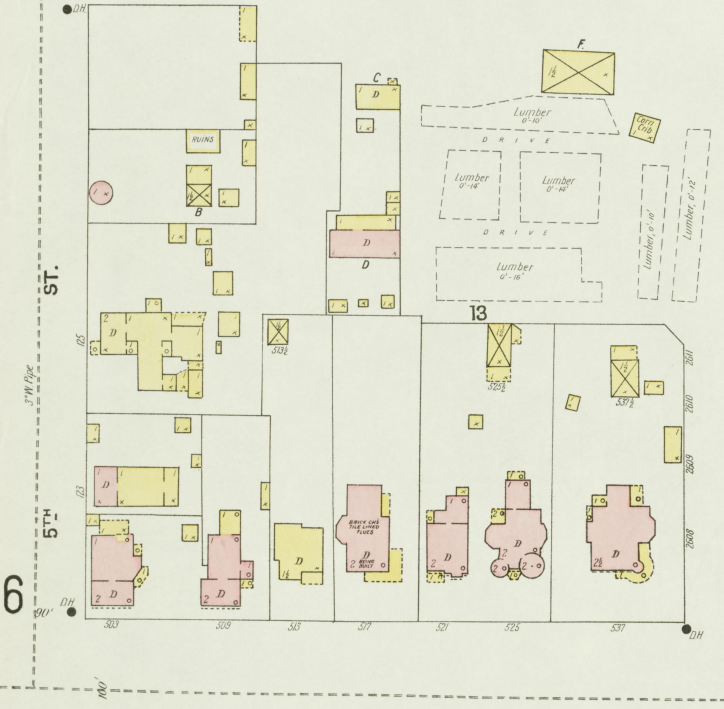
7

Remains of fire
HENDERSON CRANNING CO.

SCATTERED PILES OF LUMBER AND SLAB WOOD

JOSEPH CLORES SONS SAW & PLANING MILLS.

NIGHT WATCHMAN, NO CLOCK POWER-STEAM, HEAT-
 STORE AND SMITH IN OFFICE. STEAM IN BURN CHIMNEY
 (BY AIR) (WINDMILL AS SYSTEM) FUEL-REDAISE, FROM WELLS.
 LUMBER DRY, CITY WATER. ONE SET WINDMILL IN FIELD.
 WINDMILL 2 1/2 HOLE ATTACHED, 100 FEET HIGH AND 100 FEET
 WINDMILL IN FIELD IN FRONT OF PLANING MILL. 1 1/2 HOLE
 IN OFFICE. BURNING, 2 FEET HIGH OF 1 1/2 HOLE
 WINDMILL THROUGHOUT.



Aug 1901
HENDERSON
KY.

S. ELM

S. GREEN

S. INGRAM

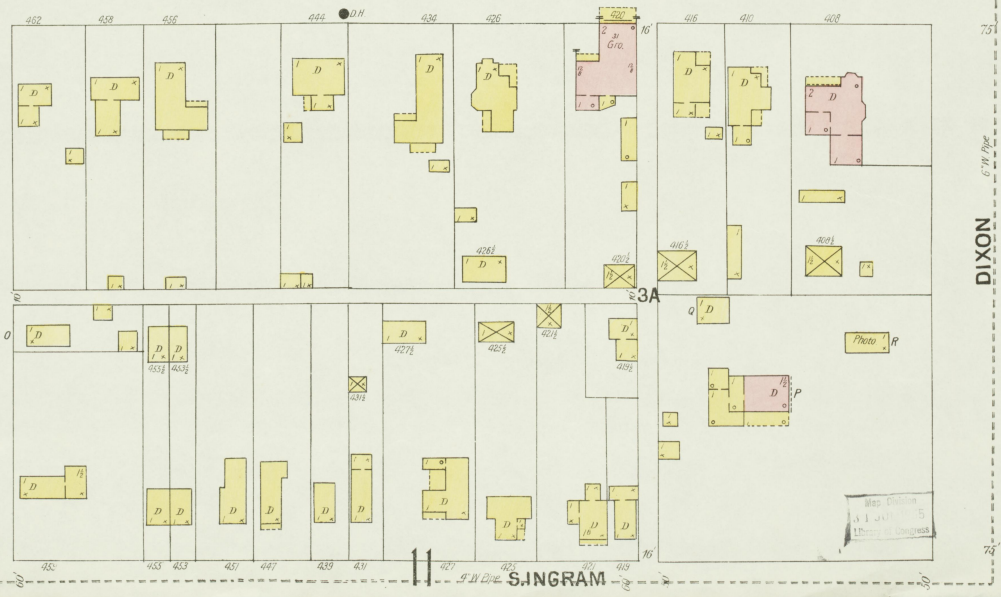
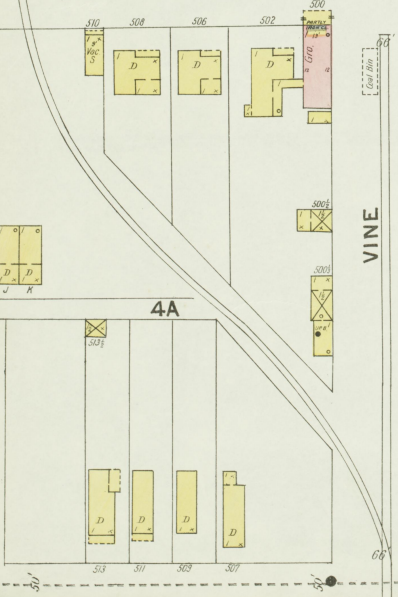
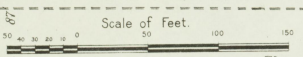
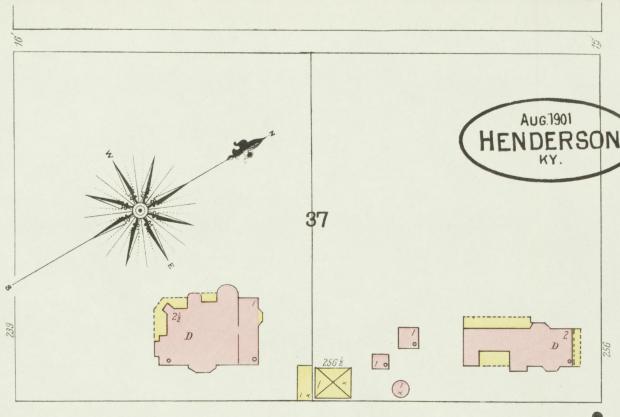
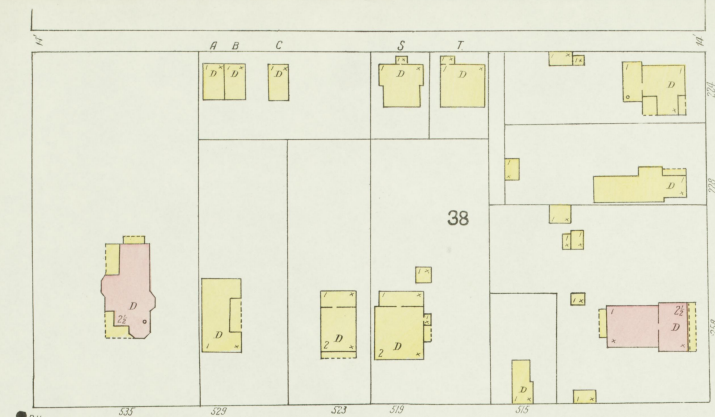
AUDUBON

JEFFERSON

VINE

DIXON

DIXON

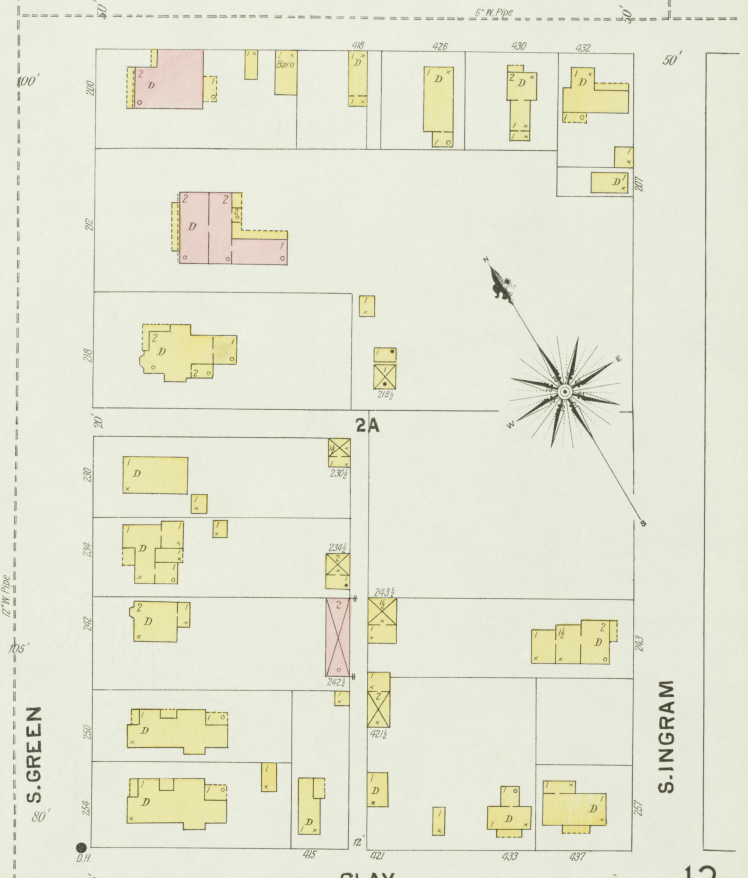
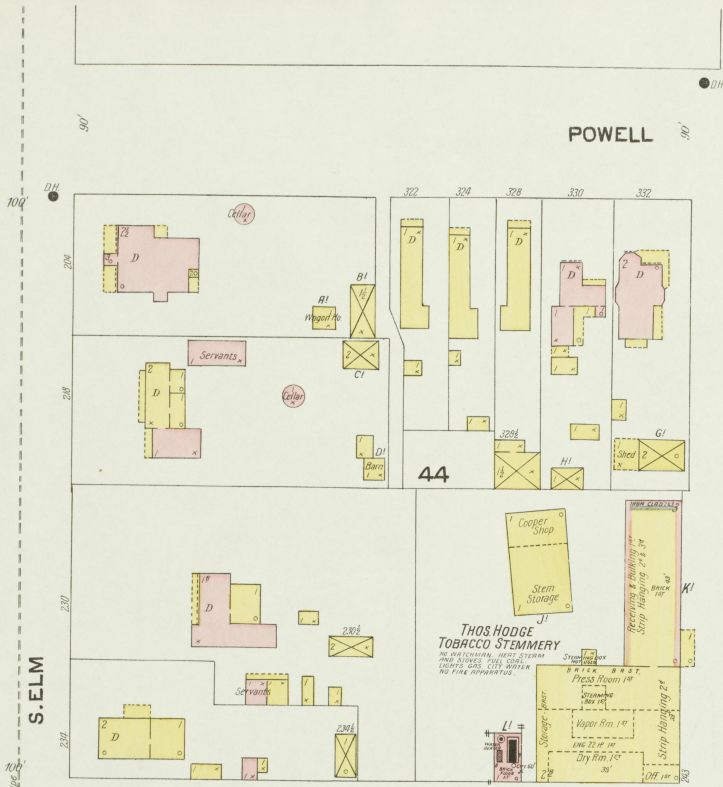


Map Division
JUL 15 1905
U.S. DEPT. OF AGRICULTURE

Aug. 1901
HENDERSON
KY.

10

9

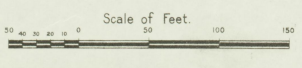
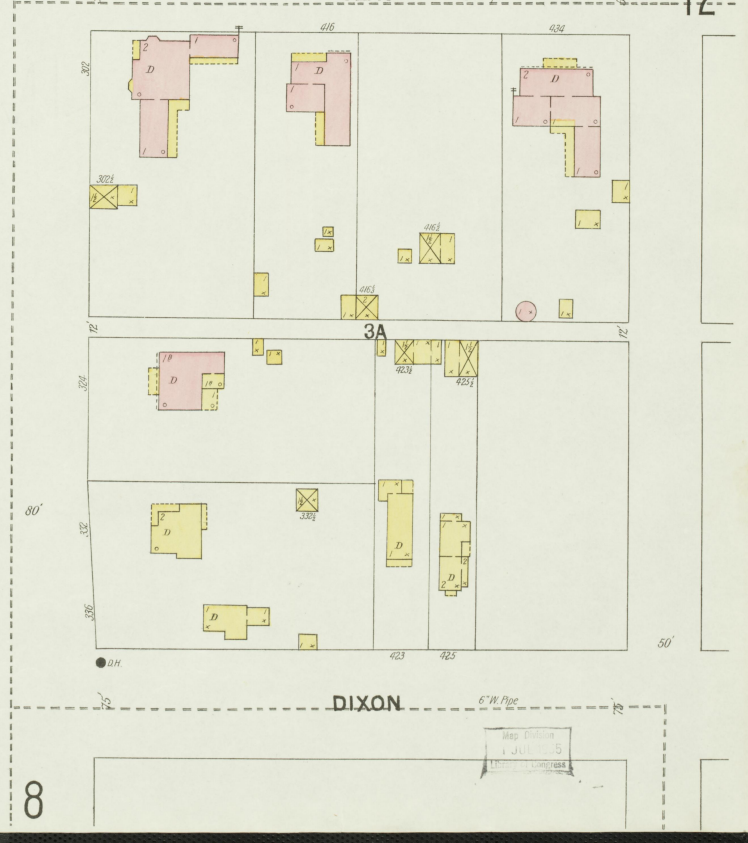


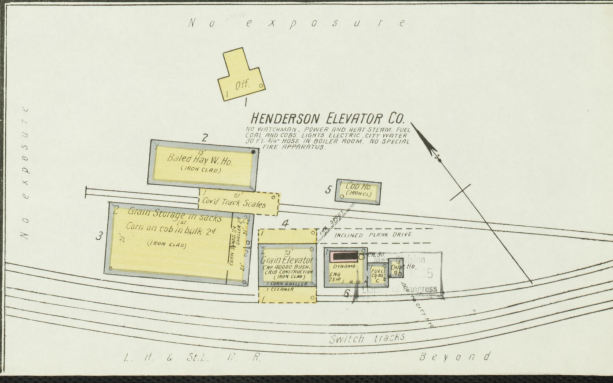
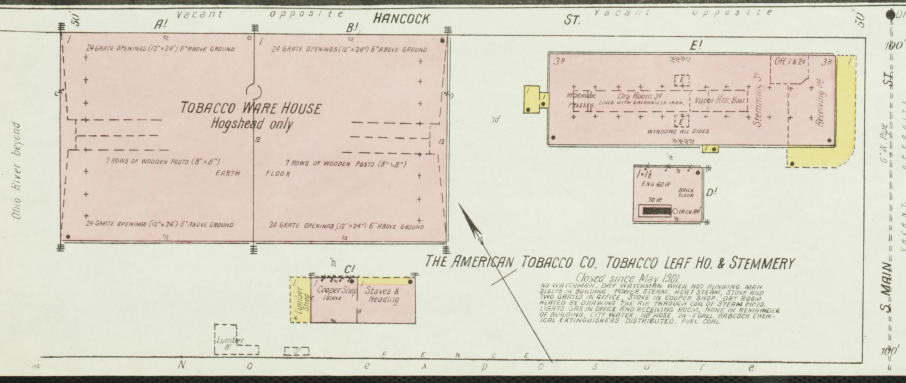
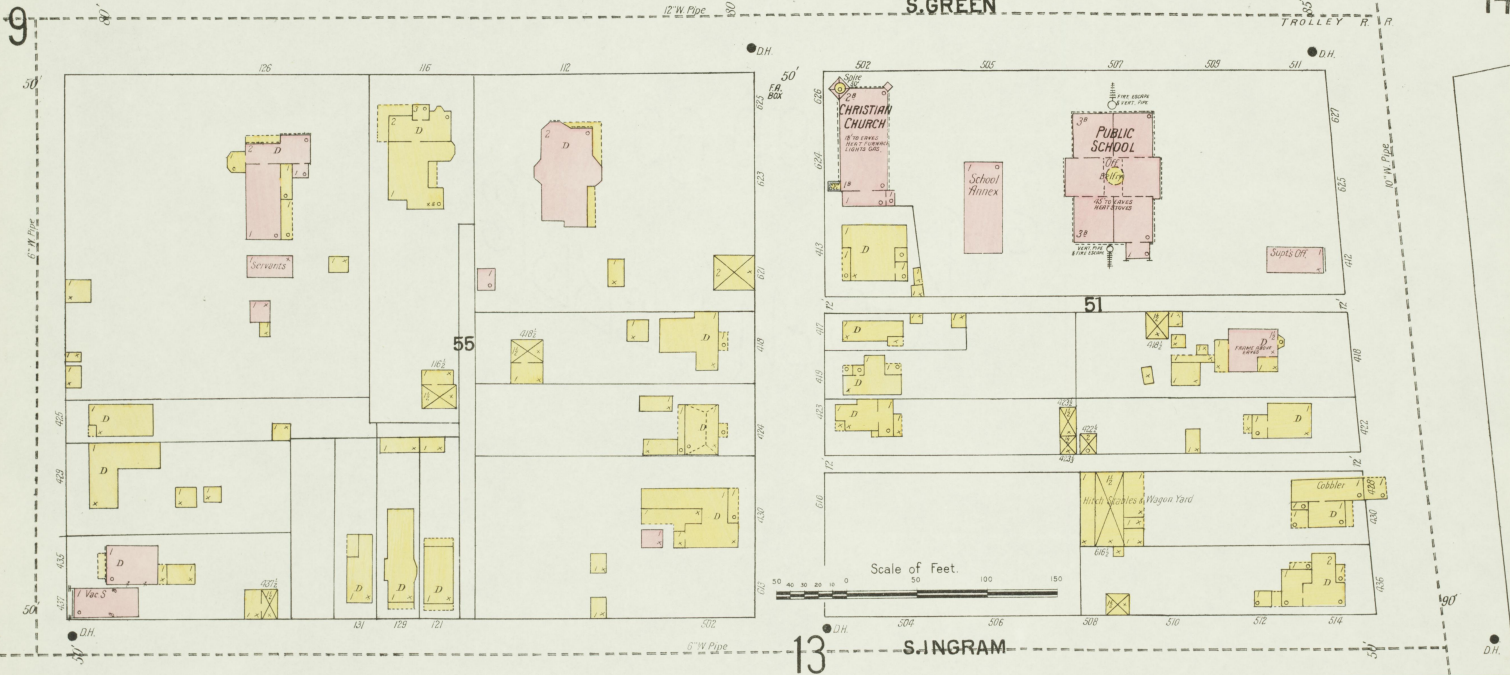
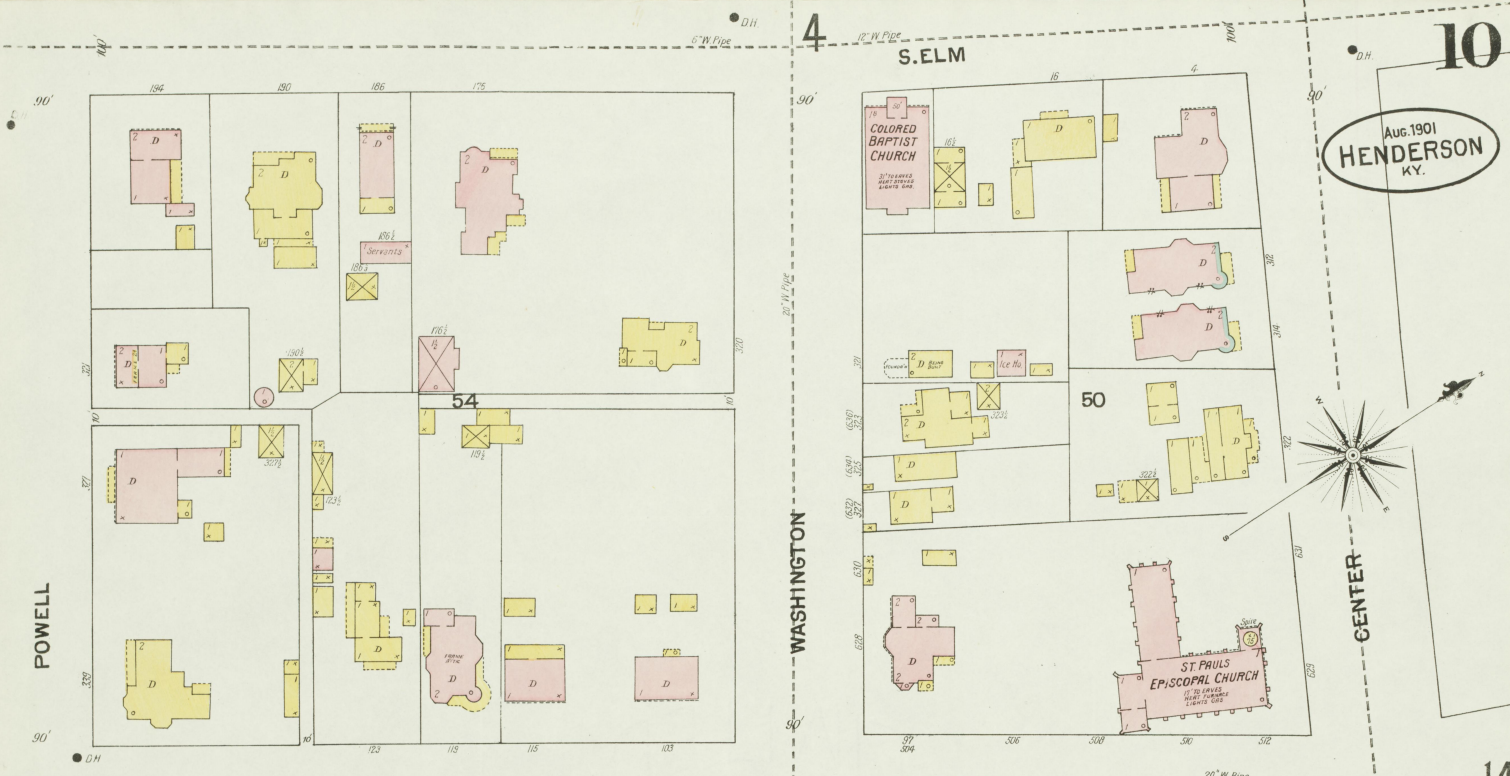
3



8

12



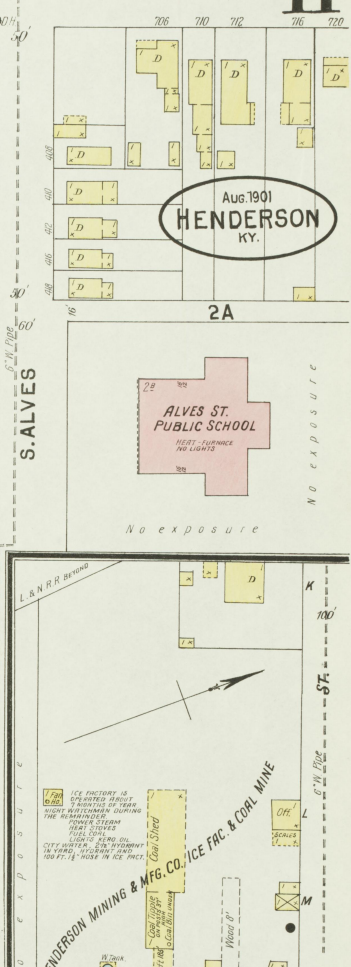
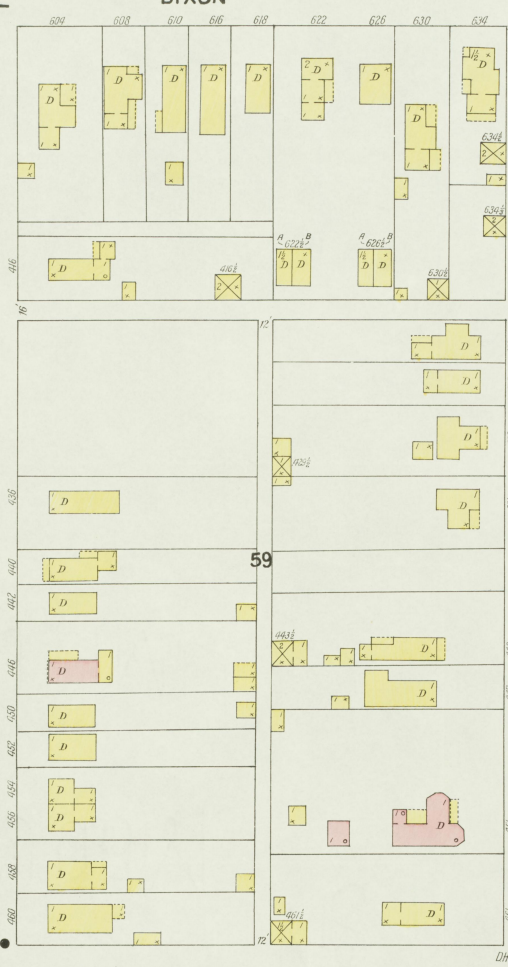


D.H.

12

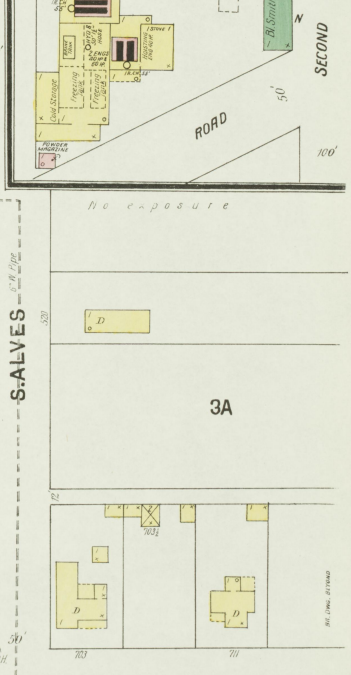
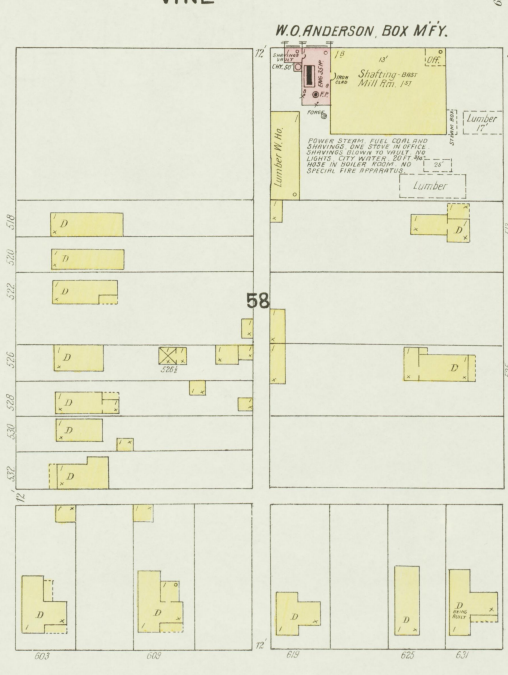
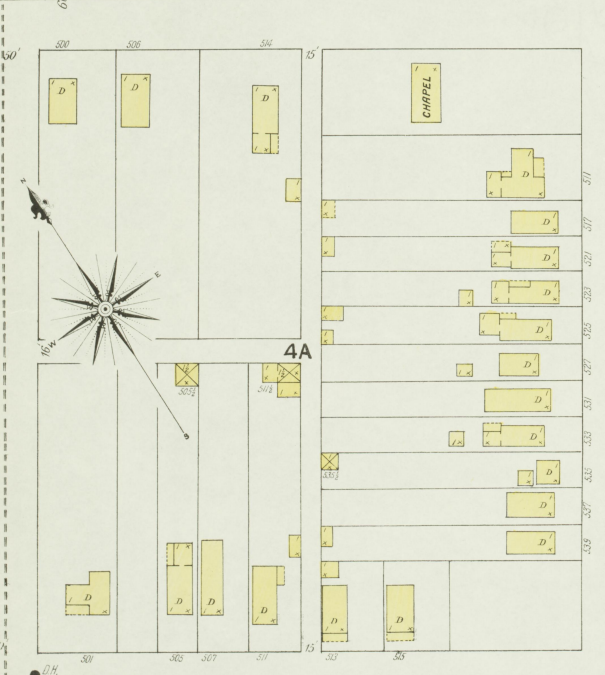
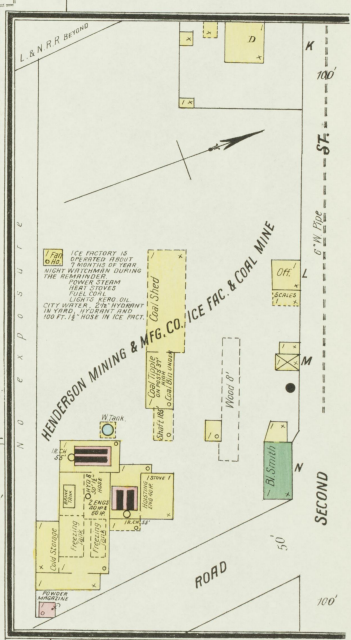
DIXON

11



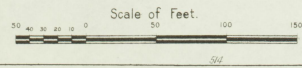
Aug. 1901
HENDERSON
KY.

ALVES ST.
PUBLIC SCHOOL



W.O. ANDERSON, BOX MFG.

PLUM



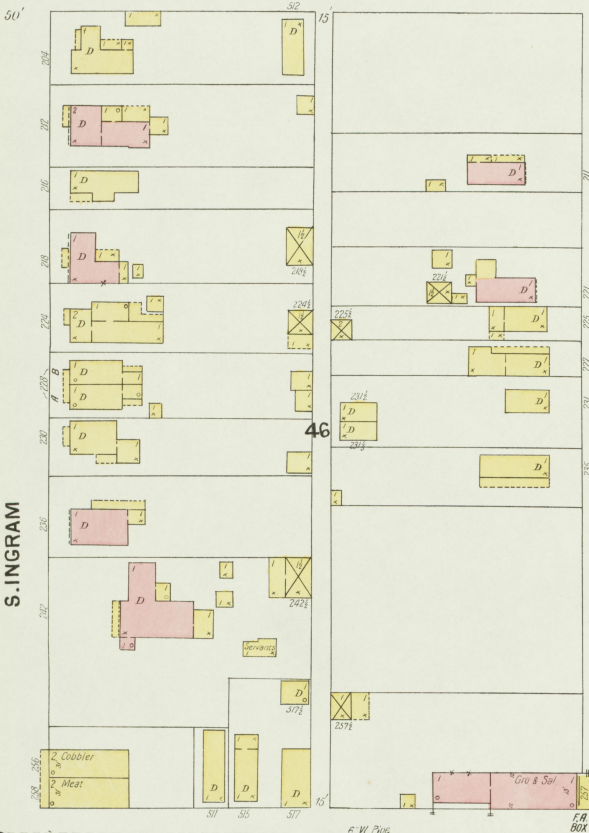
Vacant Field

Vac Field

Map Edition
JULY 5
1901 Congress

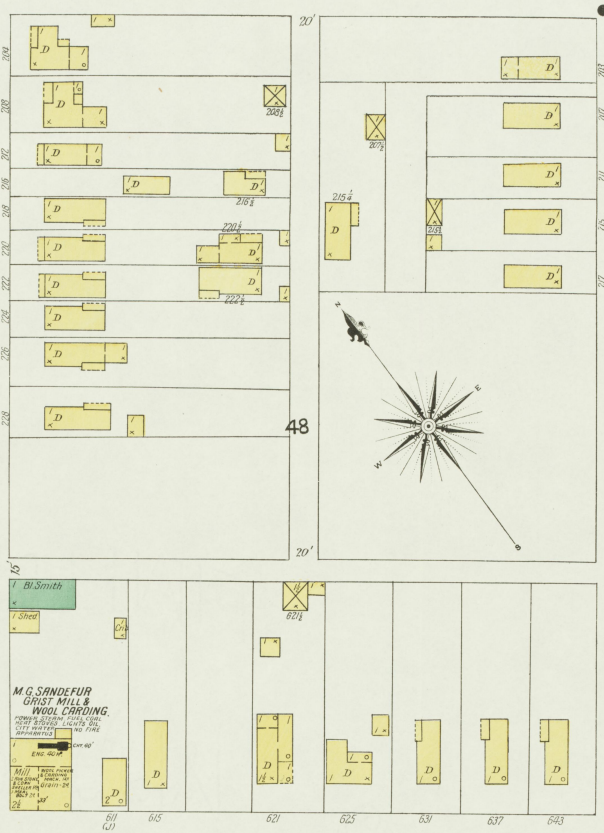
3

POWELL



S. ADAMS

S. INGRAM



CLAY

S. ALVES

9



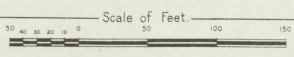
S. ADAMS

S. INGRAM



DIXON

S. ALVES



11

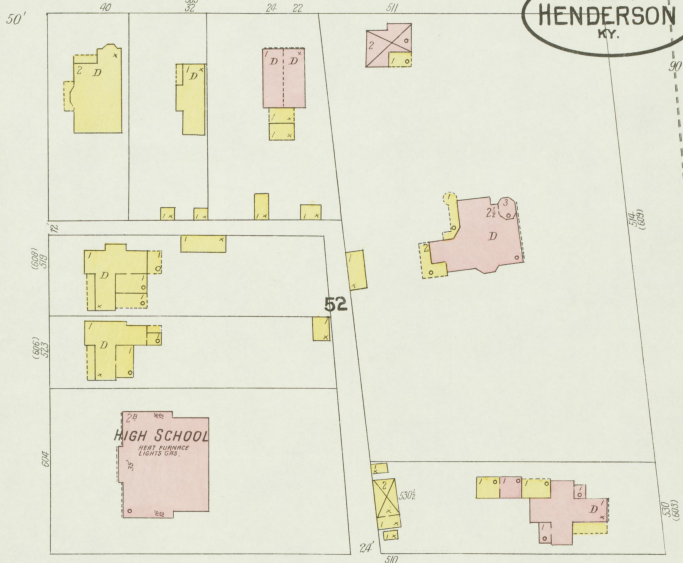
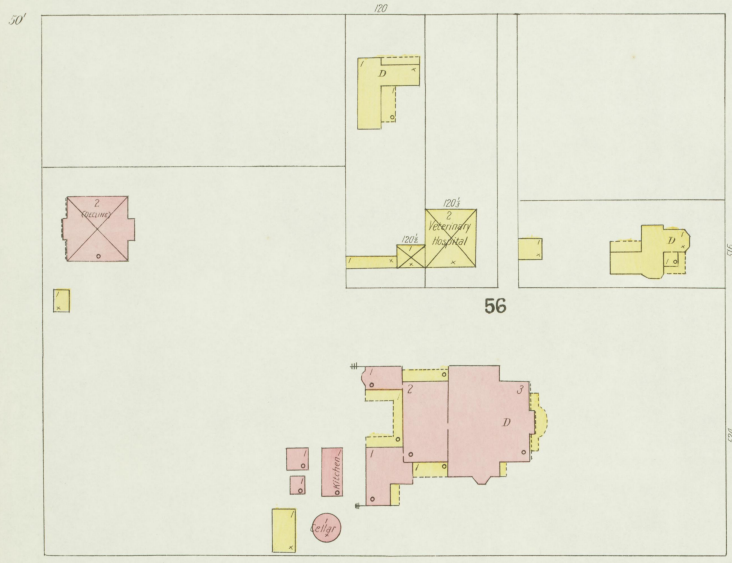
Map of Henderson
Ky. 1898

10

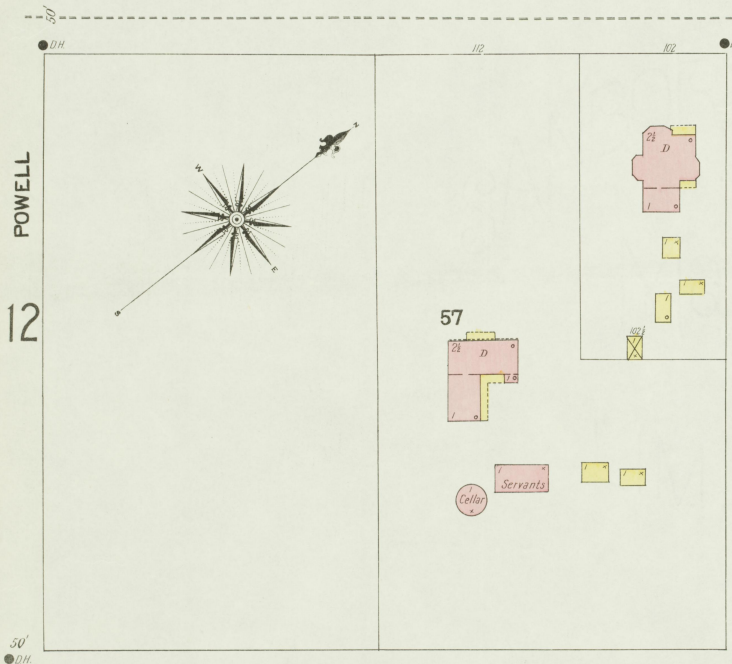
6" W. Pipe

13

Aug. 1901
HENDERSON
KY.

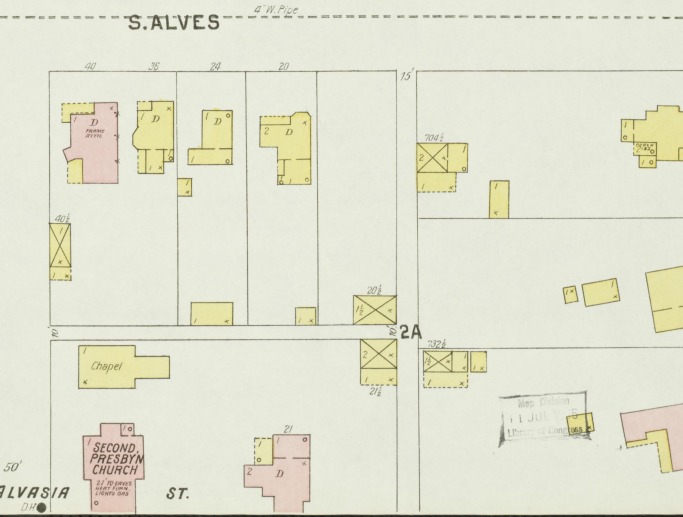


CENTER



6" W. Pipe

15



4" W. Pipe

15

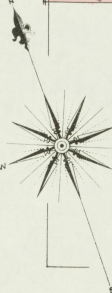
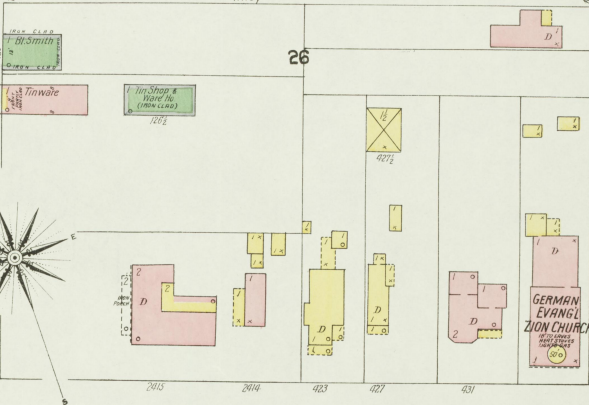
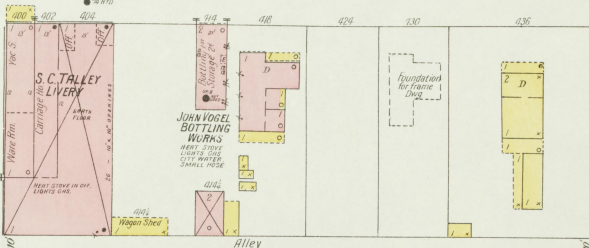
POWELL

WASHINGTON

S. ALVANIA ST.

ST.

2ND

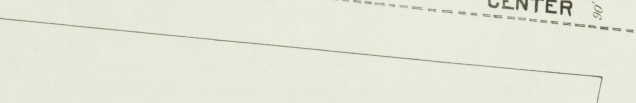
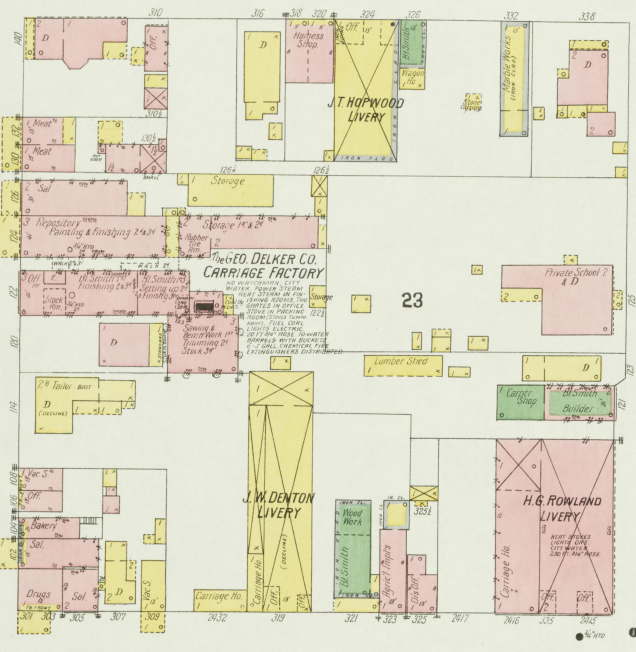
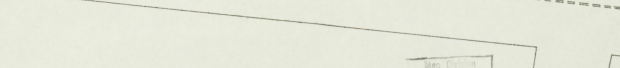
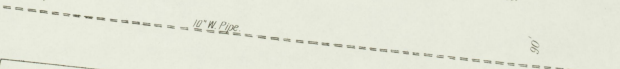


N. GREEN

N. INGRAM

ST.

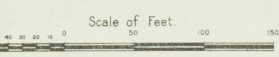
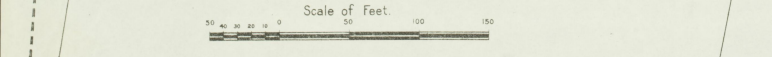
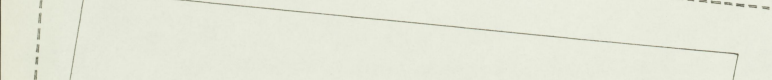
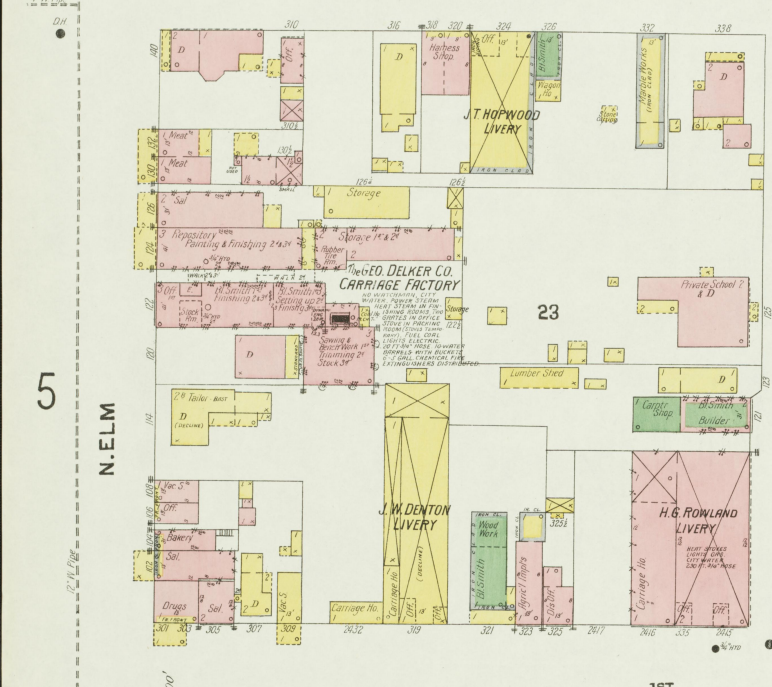
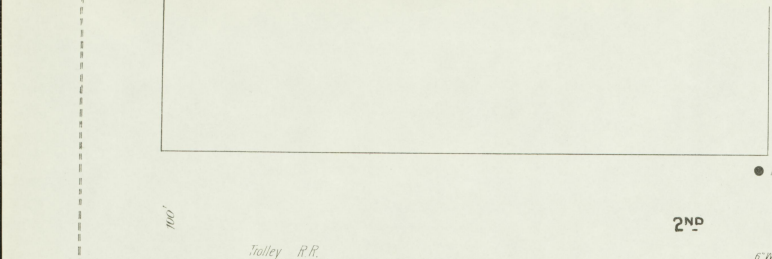
1ST



5

4

10



1 JUL 1905
11th of Congress

Aug. 1901
HENDERSON
KY.

N. INGRAM

N. ADAMS

N. ALVES

14

15

17

18

ST.

ST.

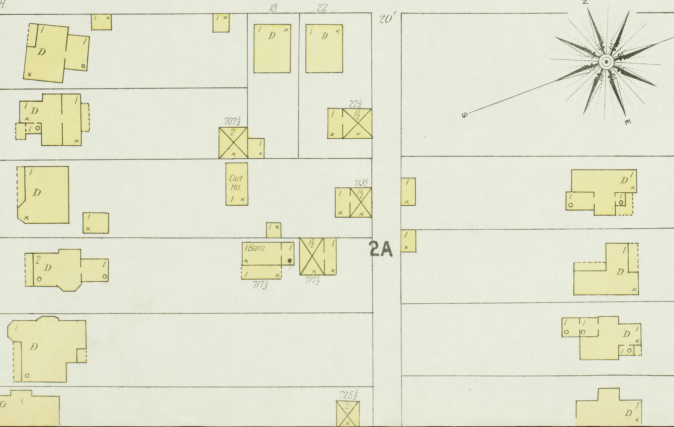
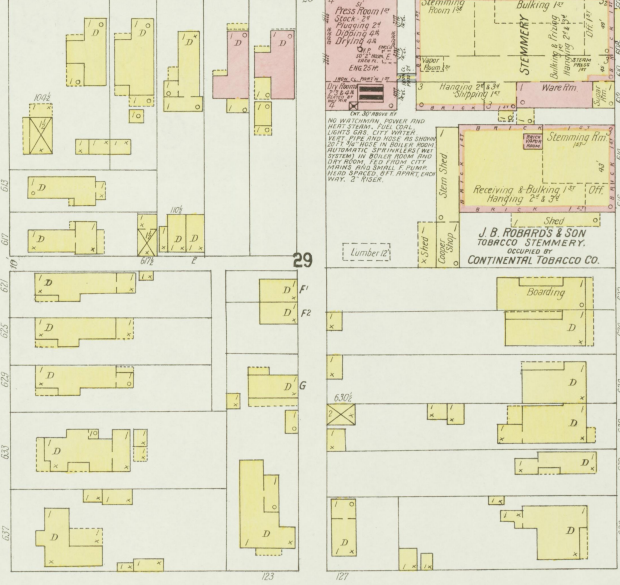
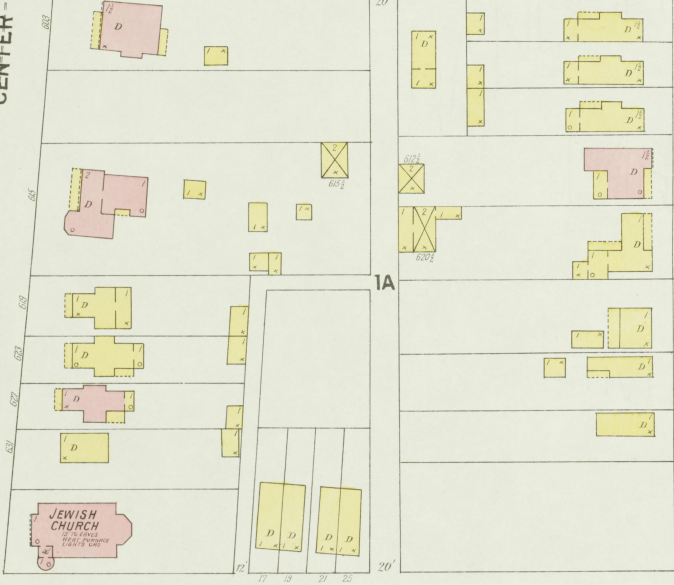
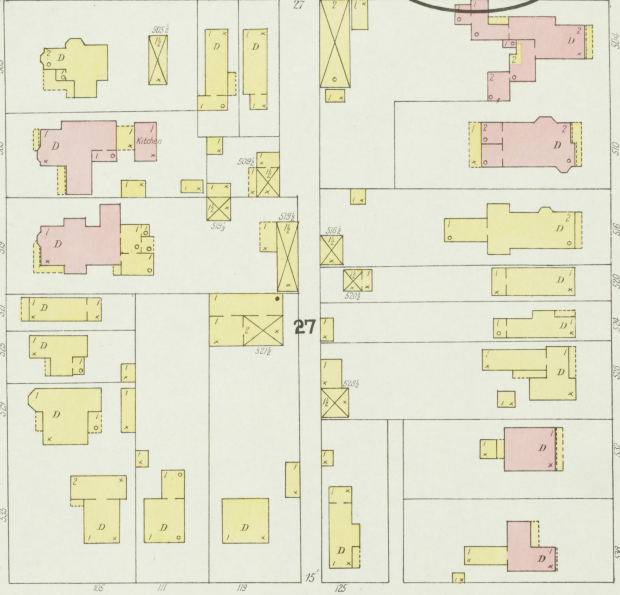
1ST

2ND

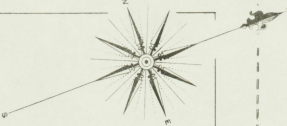
CENTER

13

90



Scale of Feet.



ROBARDS TOBACCO CO. KY.
TOBACCO FAC. FAC. NO. 34 2D DIST. HENDERSON CO. KY.
Press Room 10
Steering Room 14
Baking 10
STEMMERY
J. B. ROBARDS & SON
TOBACCO STEMMERY.
CONTINENTAL TOBACCO CO.

Aug 1901
HENDERSON
KY.



6

5

16

17

Scale of Feet.

14

ST.

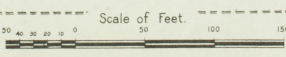
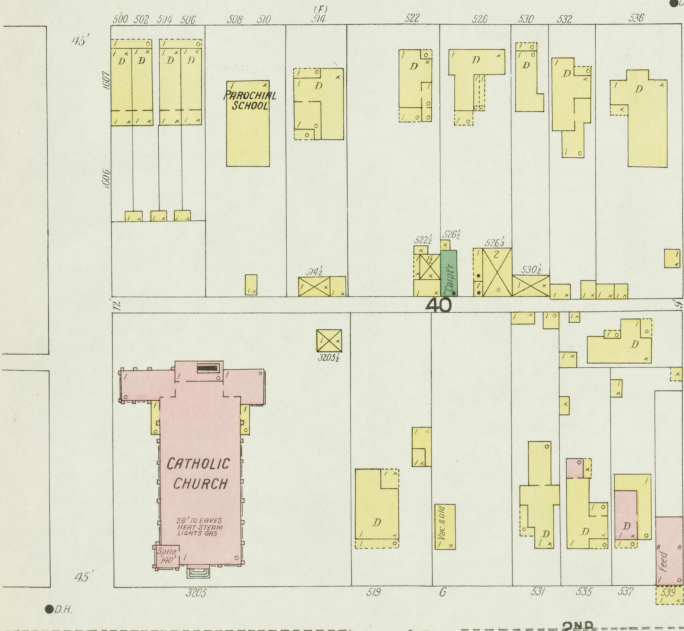
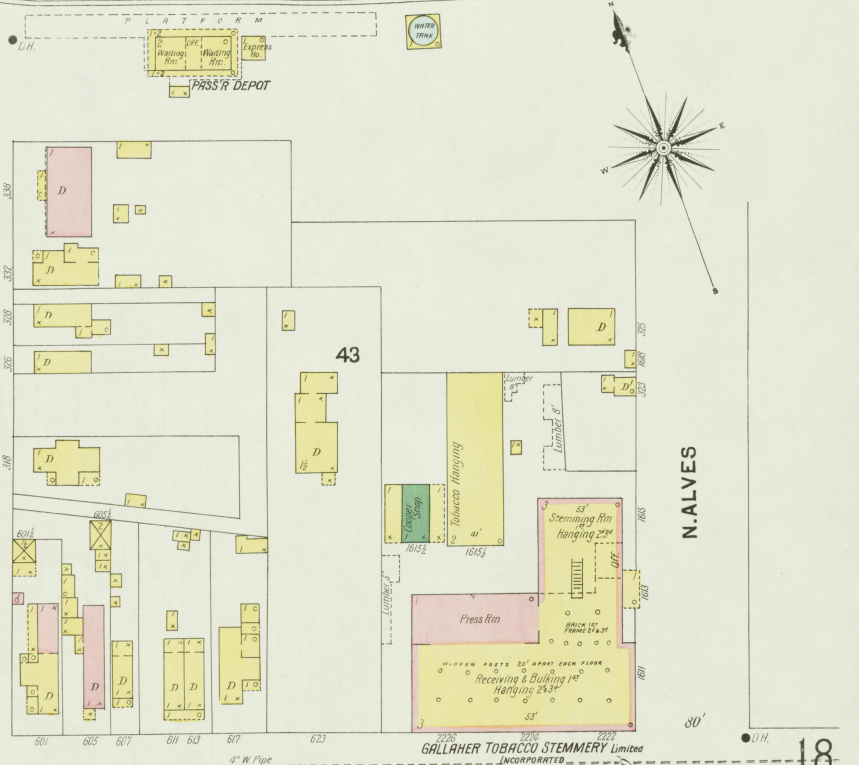
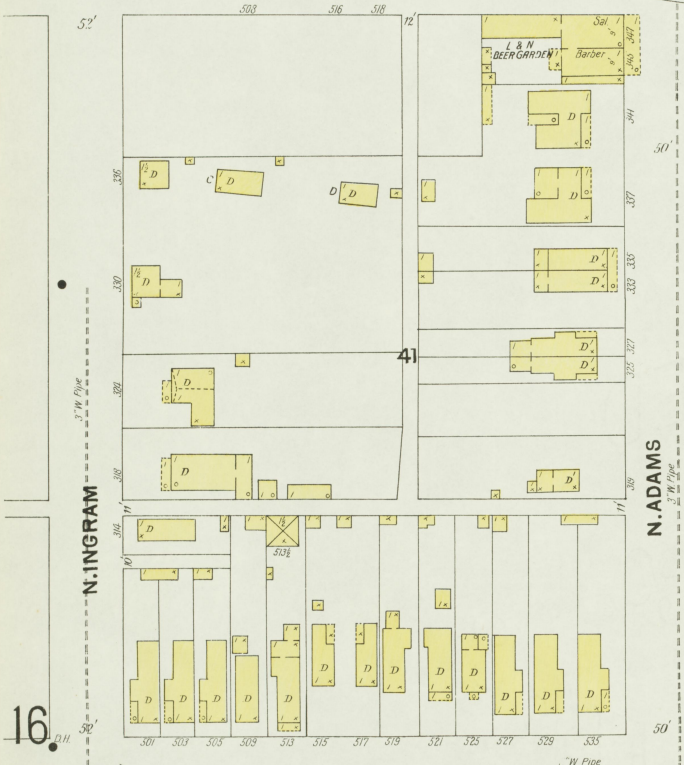
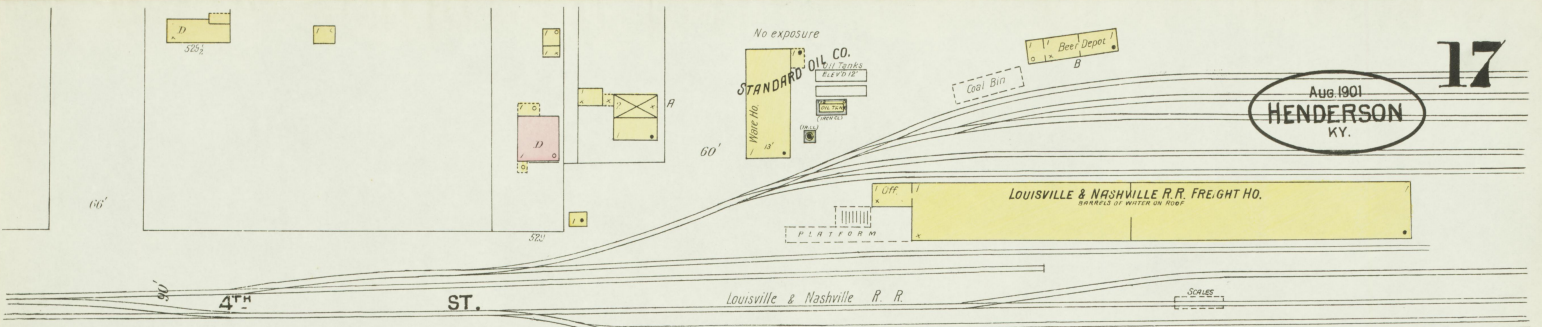
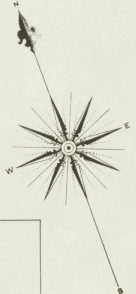
Trolley R.R.

No exposure
STANDARD OIL CO.
Ware Ho.
No. 13

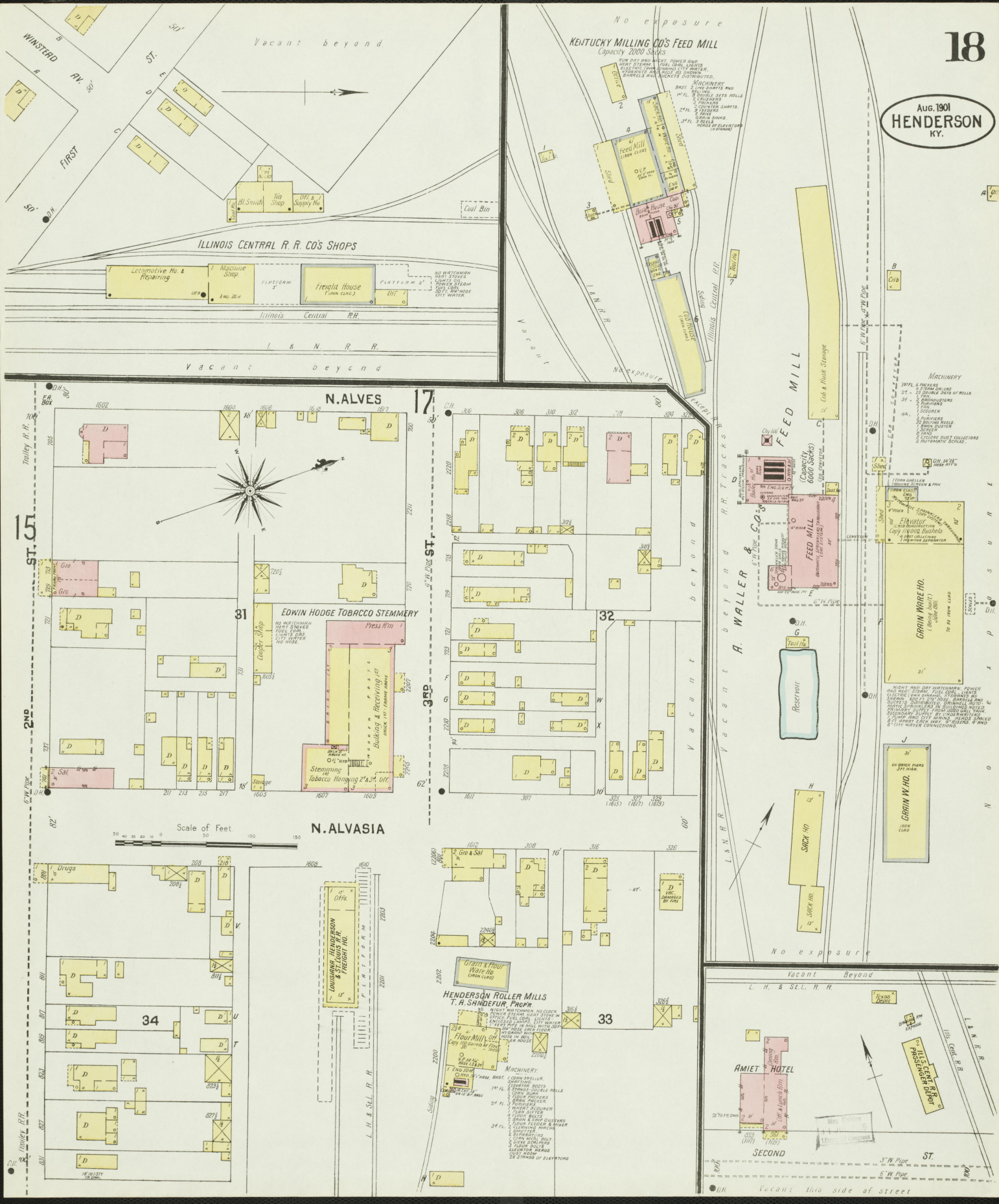
Coal Bin
Beet Depot

LOUISVILLE & NASHVILLE R.R. FREIGHT HO.
BOARD OF WATER ON ROOF

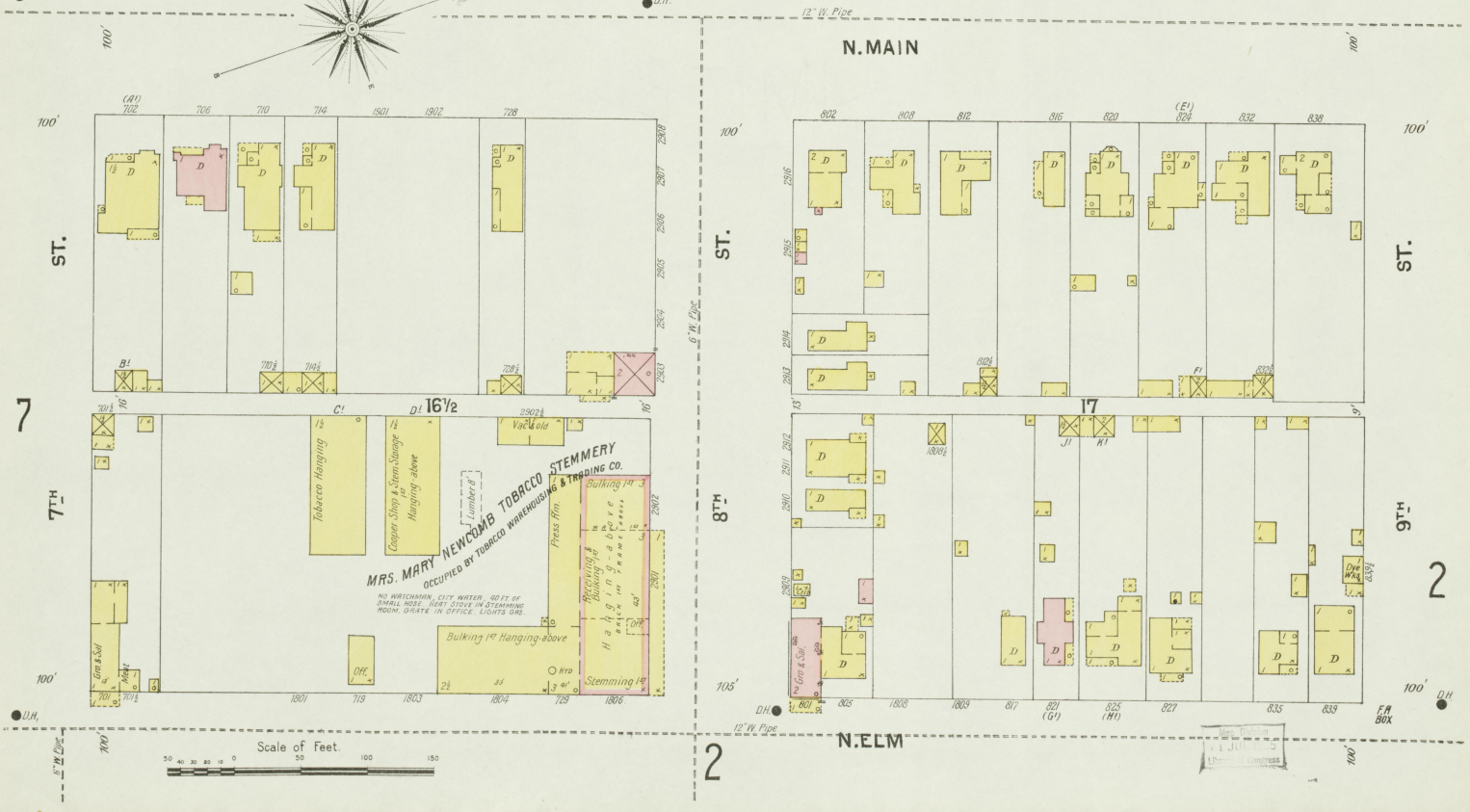
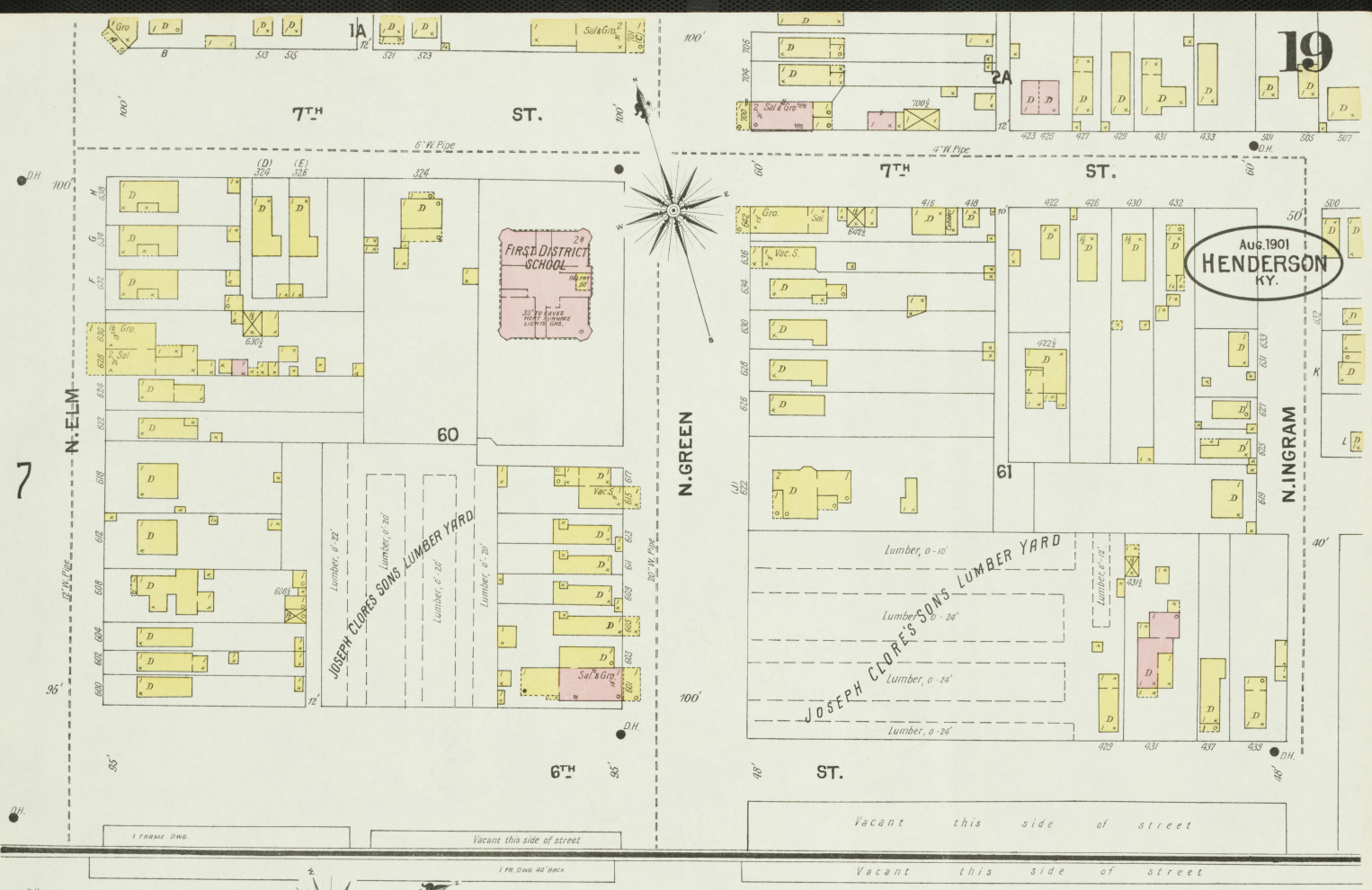
Louisville & Nashville R.R.



AUG. 1901
HENDERSON
KY.



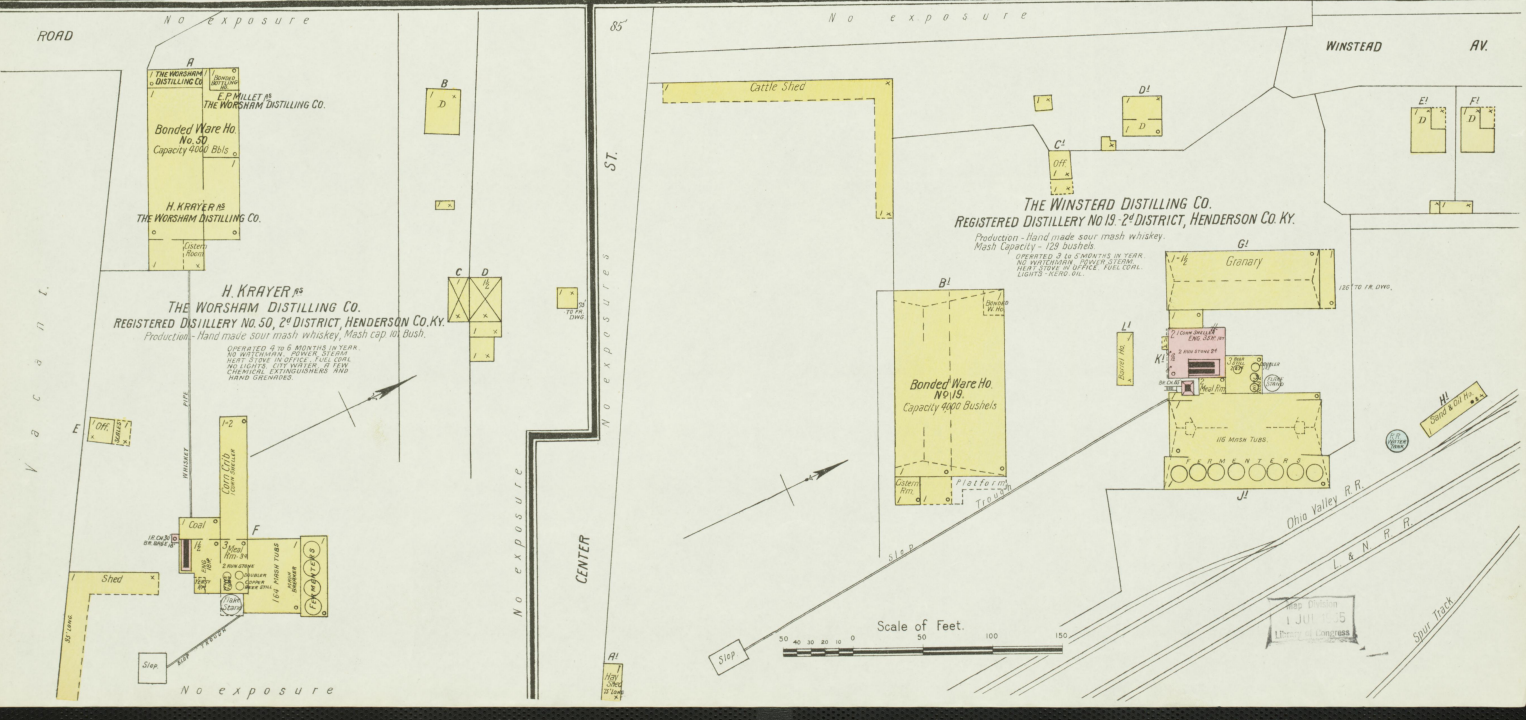
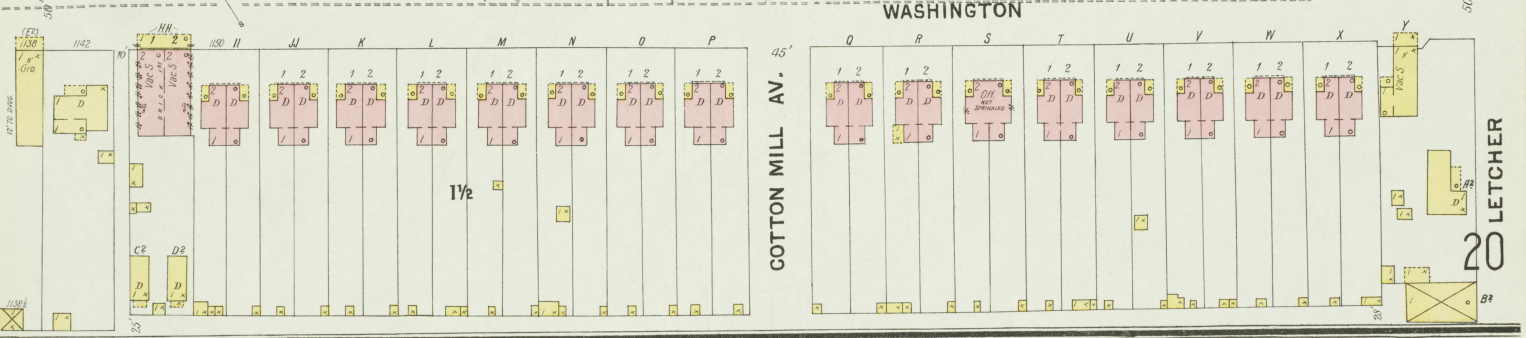
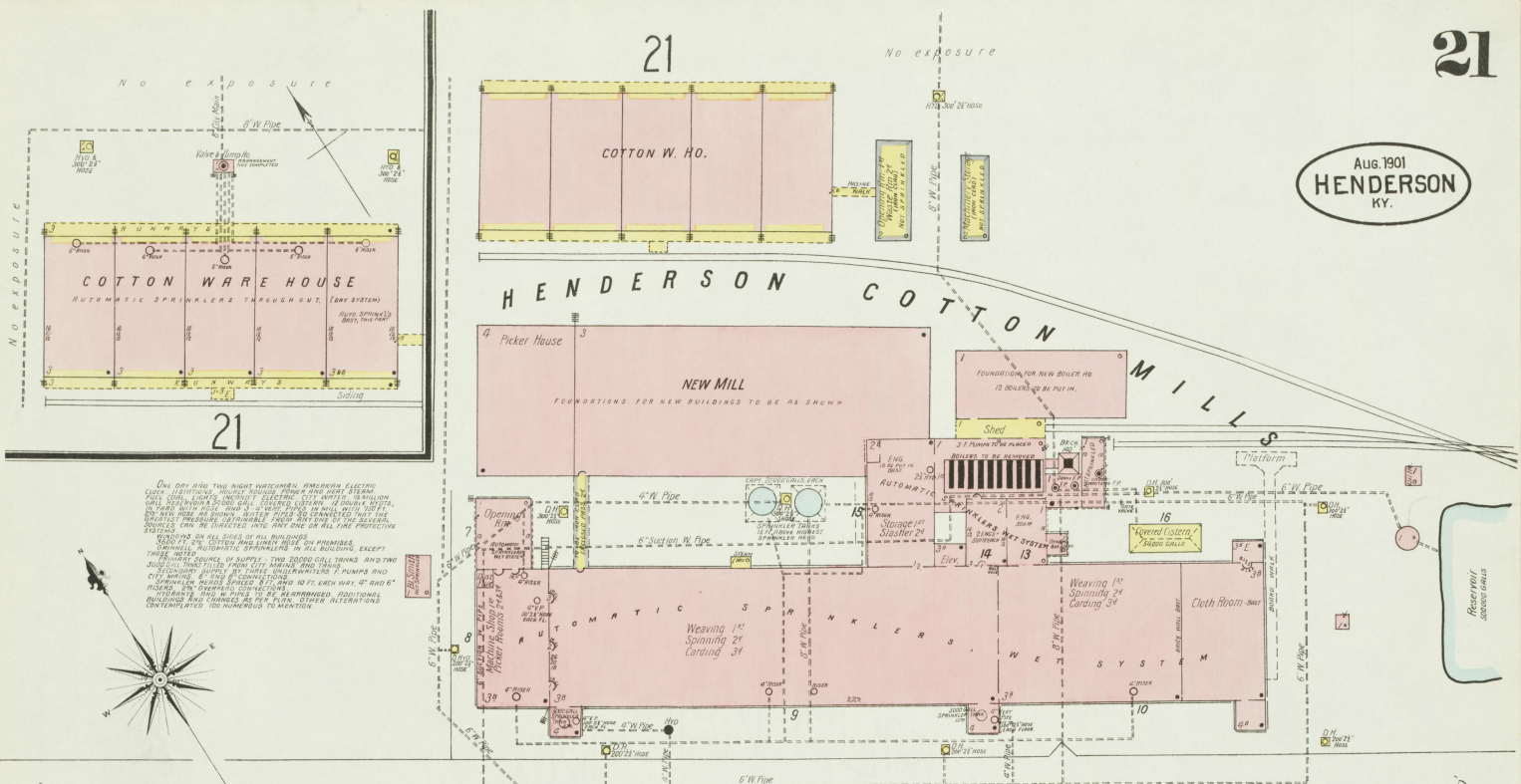
AUG. 1901
HENDERSON
KY.





Scale of Feet. 0 20 40 60 80 100 120 140 160

Aug. 1901
HENDERSON
KY.



Aug. 1901
HENDERSON
KY.

