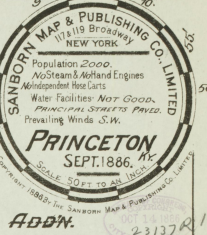


SEE

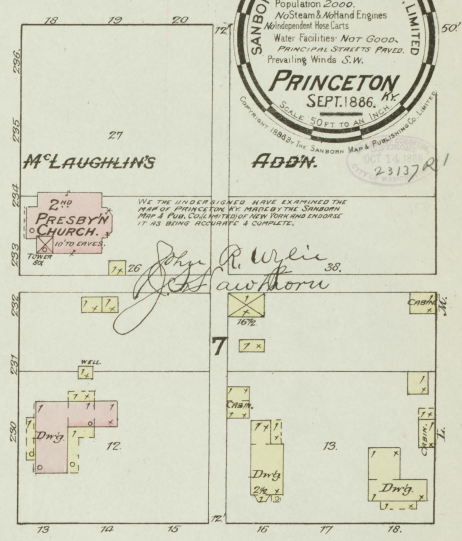
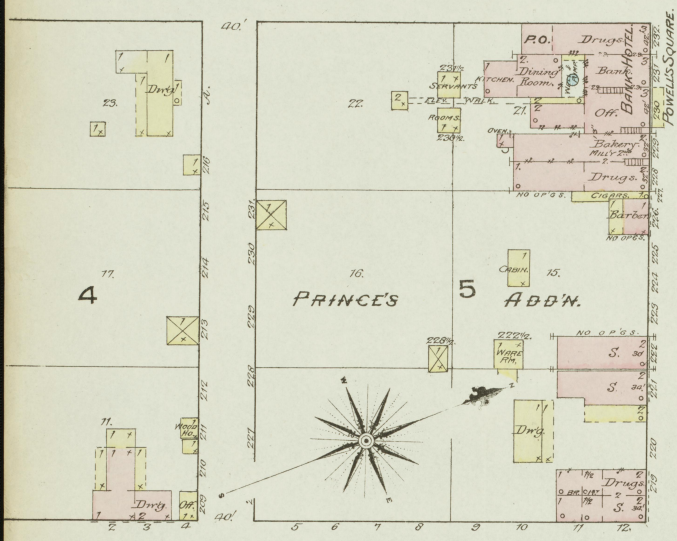
SHEET

No. 2.

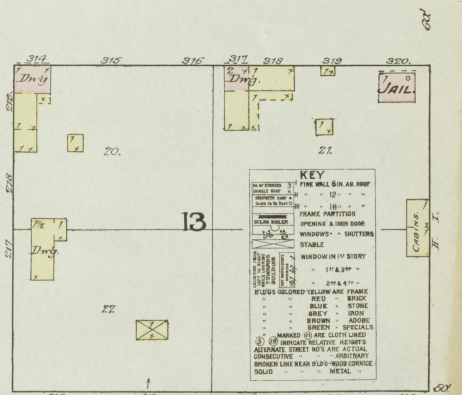
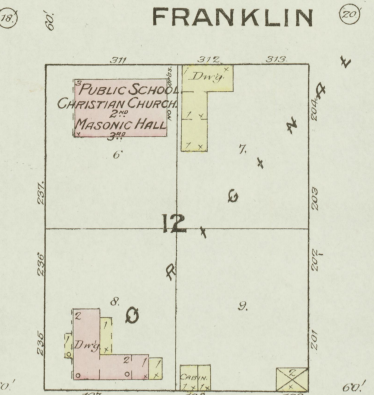
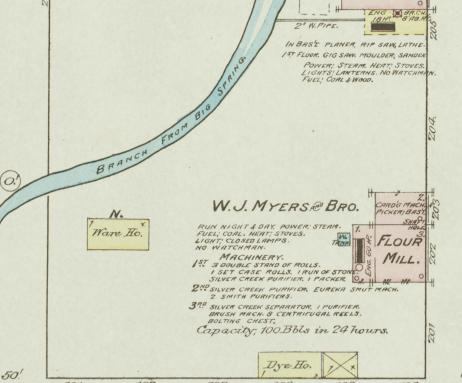
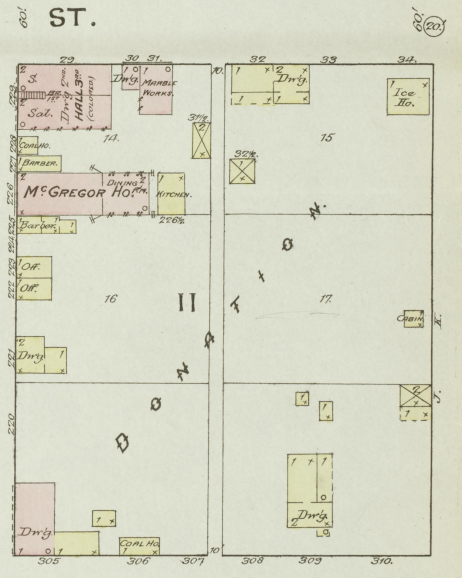
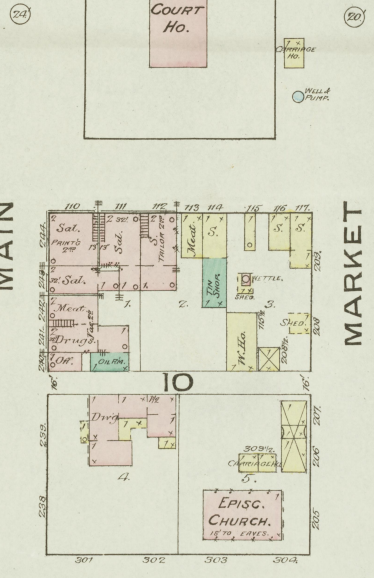
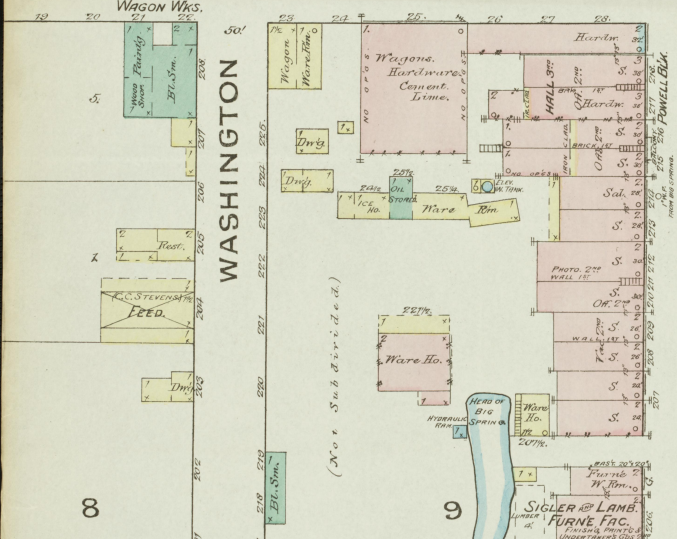
M.L. EDWARDS, WAGON WKS.



HARRISON

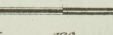


JEFFERSON

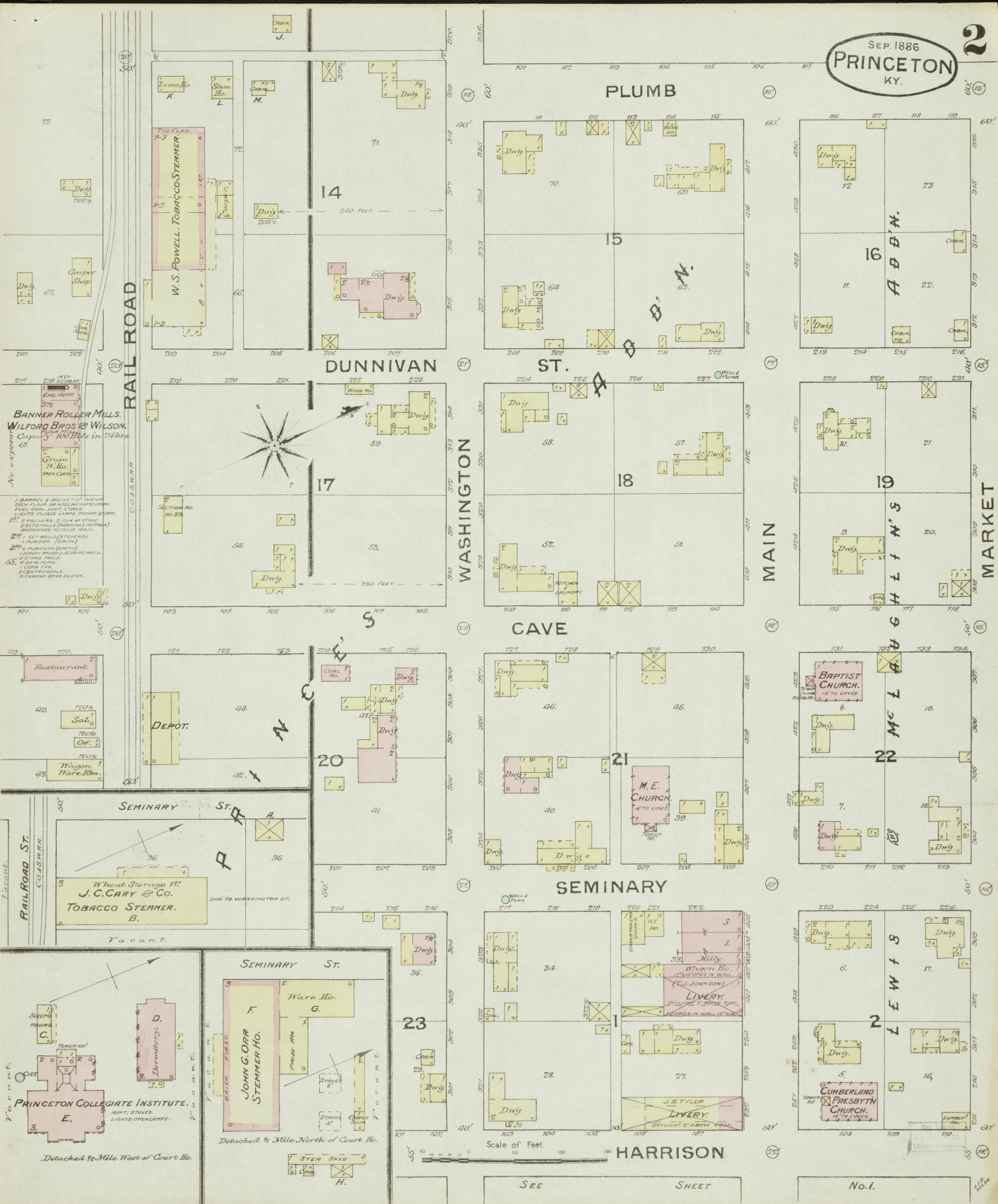


KEY	
11	FIRE WALL 8 IN. AIR ROOF
12	FRAME PARTITION
13	FRAME PARTITION
14	FRAME PARTITION
15	FRAME PARTITION
16	FRAME PARTITION
17	FRAME PARTITION
18	FRAME PARTITION
19	FRAME PARTITION
20	FRAME PARTITION
21	FRAME PARTITION
22	FRAME PARTITION
23	FRAME PARTITION
24	FRAME PARTITION
25	FRAME PARTITION
26	FRAME PARTITION
27	FRAME PARTITION
28	FRAME PARTITION
29	FRAME PARTITION
30	FRAME PARTITION
31	FRAME PARTITION
32	FRAME PARTITION
33	FRAME PARTITION
34	FRAME PARTITION
35	FRAME PARTITION
36	FRAME PARTITION
37	FRAME PARTITION
38	FRAME PARTITION
39	FRAME PARTITION
40	FRAME PARTITION
41	FRAME PARTITION
42	FRAME PARTITION
43	FRAME PARTITION
44	FRAME PARTITION
45	FRAME PARTITION
46	FRAME PARTITION
47	FRAME PARTITION
48	FRAME PARTITION
49	FRAME PARTITION
50	FRAME PARTITION

Scale of Feet.

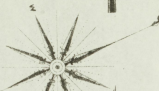


7 a a n t.



BANNER ROLLER MILLS.
WILFORD BROS & WILSON.
Capacity 1000 Bbls in 24 Hrs.
No. 1. 200' x 300'
No. 2. 200' x 300'
No. 3. 200' x 300'
No. 4. 200' x 300'
No. 5. 200' x 300'

- 1. BARREL & BUCKET OF WOODS
- 2. 6000 FEET OF AN IRON AND STEEL PIPE
- 3. 1000 FEET OF AN IRON AND STEEL PIPE
- 4. 1000 FEET OF AN IRON AND STEEL PIPE
- 5. 1000 FEET OF AN IRON AND STEEL PIPE
- 6. 1000 FEET OF AN IRON AND STEEL PIPE
- 7. 1000 FEET OF AN IRON AND STEEL PIPE
- 8. 1000 FEET OF AN IRON AND STEEL PIPE
- 9. 1000 FEET OF AN IRON AND STEEL PIPE
- 10. 1000 FEET OF AN IRON AND STEEL PIPE
- 11. 1000 FEET OF AN IRON AND STEEL PIPE
- 12. 1000 FEET OF AN IRON AND STEEL PIPE
- 13. 1000 FEET OF AN IRON AND STEEL PIPE
- 14. 1000 FEET OF AN IRON AND STEEL PIPE
- 15. 1000 FEET OF AN IRON AND STEEL PIPE
- 16. 1000 FEET OF AN IRON AND STEEL PIPE
- 17. 1000 FEET OF AN IRON AND STEEL PIPE
- 18. 1000 FEET OF AN IRON AND STEEL PIPE
- 19. 1000 FEET OF AN IRON AND STEEL PIPE
- 20. 1000 FEET OF AN IRON AND STEEL PIPE
- 21. 1000 FEET OF AN IRON AND STEEL PIPE
- 22. 1000 FEET OF AN IRON AND STEEL PIPE
- 23. 1000 FEET OF AN IRON AND STEEL PIPE



Scale of Feet.
0 50 100 150 200

SEE SHEET

No. 1.