

RUSSELLVILLE

LOGAN COUNTY KENTUCKY

Sanborn Map Company
of NEW YORK

APRIL 1923

Copyright 1923 by the Sanborn Map Co.

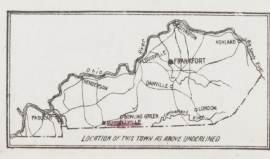
Population, 5,000.

Prevailing Winds, N.W. & S.W.
Great care is exercised in the preparation of our publications and in our service, but absolute accuracy is not guaranteed.

WATER FACILITIES: Direct pressure system of water works under municipal ownership. Installed in 1905. Water supply from deep well. Water pumped from well into reservoir of 150,000 galls. capy by one Cook deep well pump, capy 5000 galls. per hour, from reservoir water is pumped directly into mains by two Herring compound duplex steam pumps, capy 20,000 galls. each per hour.
2 sizes of water pipes, 6" to 8" diam. 30 double hydrants. Average pressure, 50 lbs. Fire pressure 125 lbs.
Entire new water system is proposed and is to be installed at an early date. Gravity and direct pressure system. Water supply from spring 3 miles from town. Water pumped from spring into reservoir of one million galls. capy located on hill at end of Main St. Gravity flow from reservoir to pumping station, thence pumped directly into mains by centrifugal electric pump.

FIRE DEPARTMENT: Volunteer. One chief and 12 men. One Ford hose auto. truck. Two hand hose carts. 1500 ft. 2 1/2" hose.
Fire alarm by bells, and by siren at pumping station.

Scale 700 feet to one inch.



KEY

- STAIRS (C)-CONCRETE BLOCK
- BUILDING COLOR: YELLOW (AS FRAME)
- RED (BRICK)
- BLUE (STONE)
- GRAY (IRON)
- BROWN (FIRE PROOF)
- SPRINKLER
- FIRE STATION (SHOWS BY STAR)
- ALTERNATE STREET NUMBERS ARE ACTUAL
- CONSECUTIVE STREET NUMBERS ARE ARBITRARY

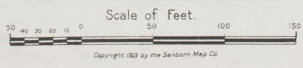
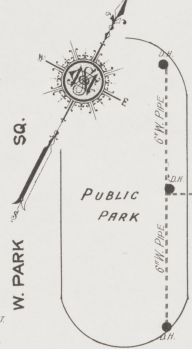
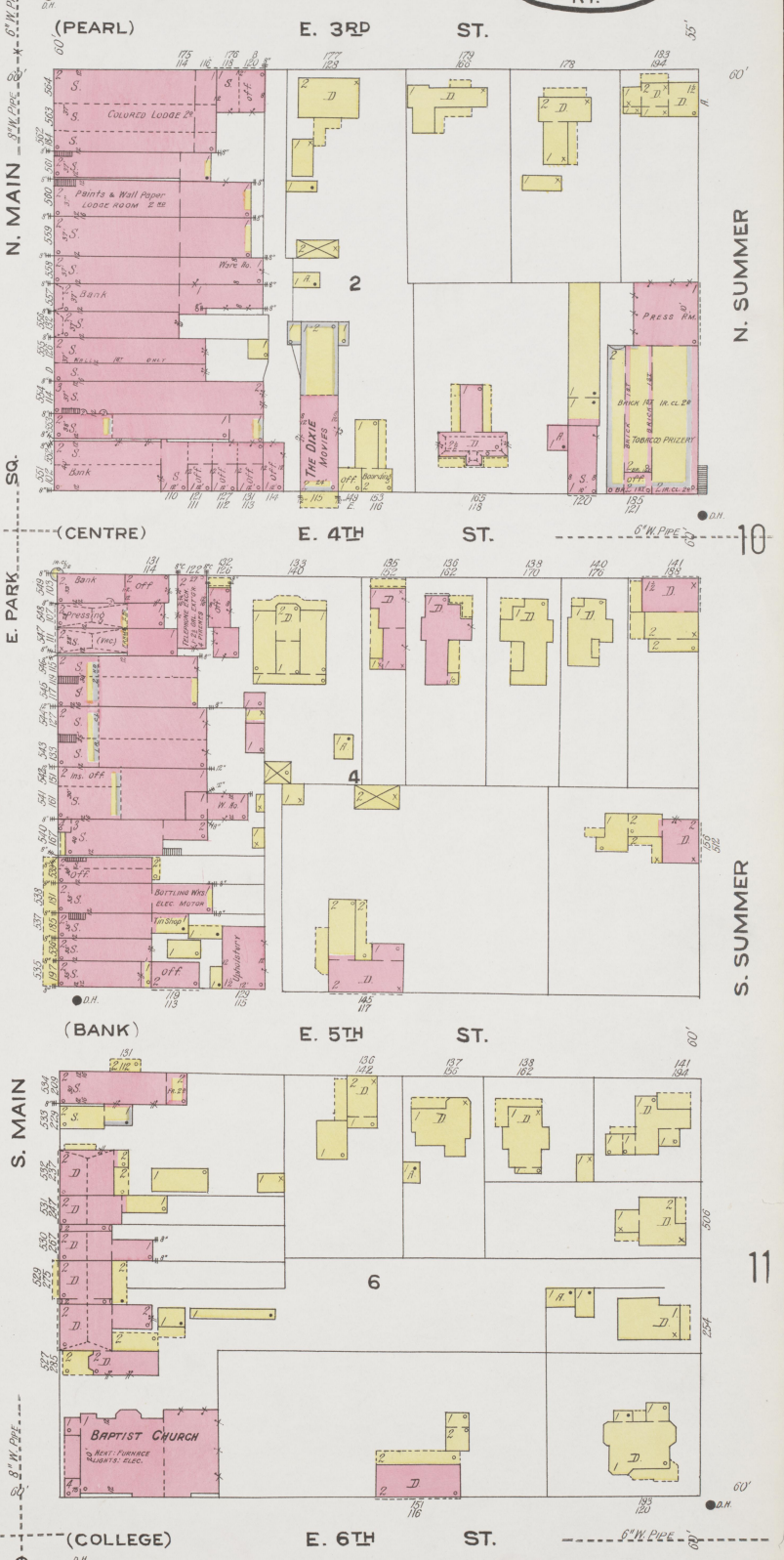
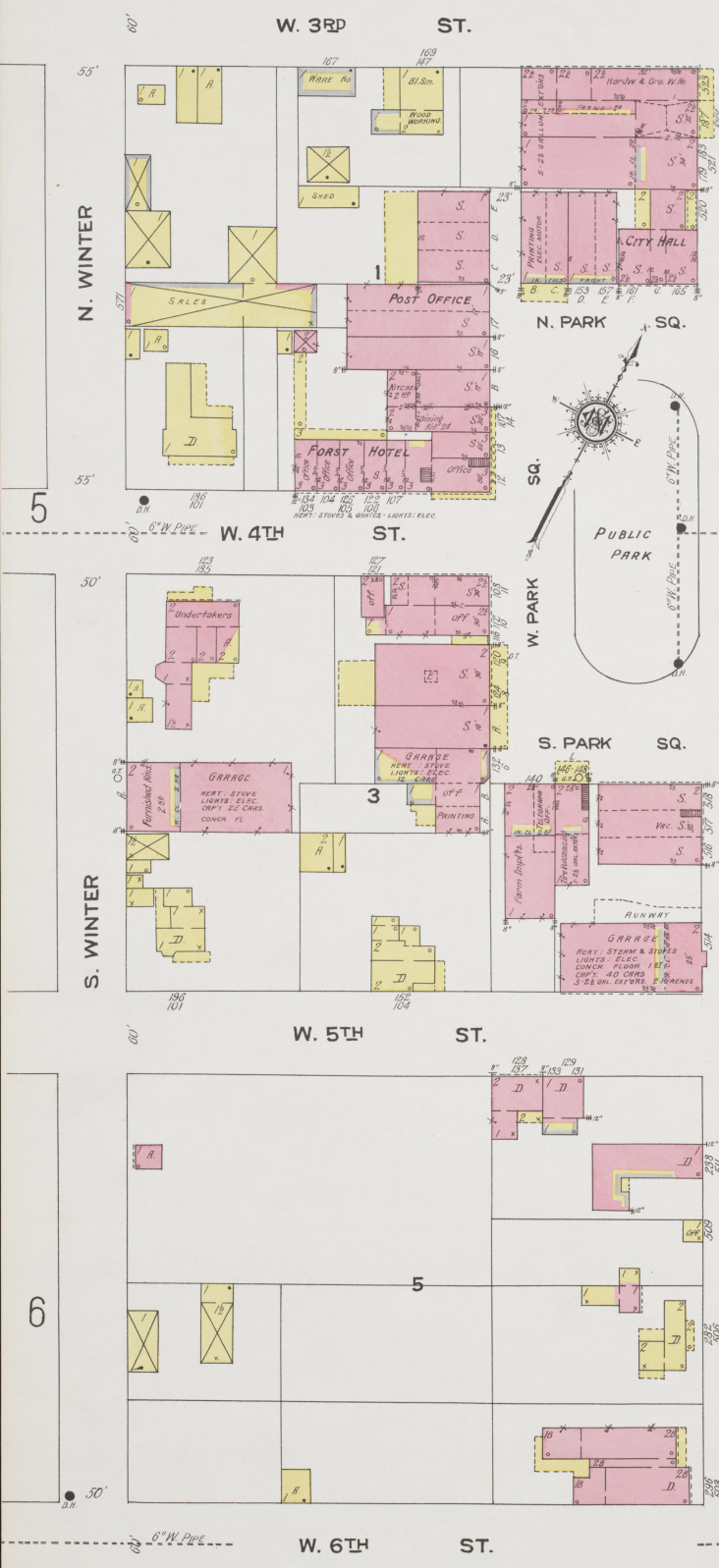
INDEX

STREETS		INDEX		INDEX		INDEX	
Armstrong, A	7	First, E.	200-495 9	Owen, N.	5	Summer, S.	100-298 *2
Bank, see E. Fifth.		" "	500-634 *12	" S.	5	" "	101-199 *4
Barclay, see E. Second.		" "	591-633 14	" S.	5	" "	201-499 *11
Bethel, N.	3, 5 & 13	Fourth, E.	100-185 2	Park Square, E.	2	" "	300-634 *8
Bibb, see E. Eighth.	5, 6 & 13	" W.	200-499 10	" S.	2	Third, E.	100-198 *2
Blaizey, N.	5 & 6	" W.	500-721 12	" S.	2	" "	101-199 *4
Breathitt, N.	100-298 10	" W.	100-185 2	Payton, N.	12 & 14	" W.	200-499 10
" S.	200-495 9	Franklin, G	500-699 12	Pearl, see E. Third.		" W.	100-194 *4
" S.	200-889 11	Gladish Court, G	13	Perry, P.	14	" W.	101-185 *2
Caldwell, N.	12	Gray, see W. Eighth.	14	Pleasant, see Wade.		" W.	200-600 *3
Cedar, see E. Seventh.		Greenville Pike, H	14	Russell, R	14	" W.	501-605 *13
Centre, see E. Fourth.		High, see E. Ninth.		Sanders, see E. First.		" W.	507-508 13
Cherry, S.	13	Hopkinsville Pike, H	13	Second, E.	100-213 4	Wade, W.	7 & 13
Clarksville Pike, C	13	Johnson, J	9 & 14	" "	100-198 *2	Winter, N.	100-198 *2
College, see E. Sixth.		Main, N.	100-199 2	" "	101-189 *5	" S.	100-185 *5
Cornelius Ave., C	3, 4 & 14	" "	200-495 4	" W.	100-199 8	" "	101-189 *5
Dixie Highway, see Franklin.		" S.	500-699 14	" S.	200-488 *6	" "	100-185 *5
Eighth, E.	8	" S.	100-299 2	" W.	301-399 *7	" "	101-185 *2
" W.	8 & 13	Morgan, N.	300-625 8	" W.	401-497 *13	" "	101-185 *2
Evans, S.	13	" "	101-295 10	Sixth, E.	100-199 8	" "	101-185 *2
Fifth, E.	100-199 2	" "	101-295 *9	" W.	100-199 8	" "	101-185 *2
" "	200-498 *10	" "	400-504 *14	" S.	100-199 8	" "	101-185 *2
" W.	500-699 12	Nashville, N	13 & 14	" S.	200-488 *6	" "	101-185 *2
" W.	100-199 8	Road, see Armstrong.		" W.	500-699 12	" "	101-185 *2
" W.	200-495 *5	Ninth, E.	100-199 8	" W.	100-188 *2	" "	101-185 *2
First, E.	201-499 *6	" "	200-425 7	" W.	101-199 *8	" "	101-185 *2
" "	100-185 4	" "	426-695 13 & 14	Spring, N.	200-499 6	" "	101-185 *2
		" "		" S.	101-197 *2	" "	101-185 *2
		" "		Summer, N.	100-195 10	" "	101-185 *2
		" "		" "	101-197 *2	" "	101-185 *2
		" "		" "	200-399 11	" "	101-185 *2
		" "		" "	100-195 10	" "	101-185 *2
		" "		" "	101-197 *2	" "	101-185 *2
		" "		" "	300-396 9	" "	101-185 *2
		" "		" "	301-395 4	" "	101-185 *2

* Indicates only one side of Street shown.

SPECIALS

A. M. E. Zion Church,	12
Armory,	6
Baptist Church,	2
Bell's Coal Yard,	4
Bethel College,	11
Brown-Richardson & Co., Planing Mill,	4
Church of Christ,	7
City Hall,	2
County Court House and Jail,	8
Cumberland Presbyterian Church,	4
Dark Tobacco Growers Co-operative Ass'n:	
Prizery,	4
Tobacco Warehouse,	13
Dixie, The, Moving Pictures,	2
Ellis, T. M., & Co., Flour Mill,	4
Episcopal Church,	8
Farmers Loose Leaf Tobacco Warehouse Co.,	4
Fire Department,	4
First Baptist Church,	11
Forest Hotel,	2
K. of P. Hall (Colored),	11
Knob City Flour Mill,	4
High School,	14
Logan Female College,	11
L. & N. R. R. Freight Depot,	3
Passenger Depot and Shops,	13
Methodist Episcopal Church,	8
Model Hotel, The,	4
Old First Baptist Church (Colored),	12
Post Office,	2
Public School,	11
Pure Ice and Coal Co., Ice Factory,	3
Roman Catholic Church,	6
Russellville Electric Light & Water Works Plant,	4
Steam Laundry,	4
Second Baptist Church (Colored),	12
Standard Oil Co., Storage,	4



5

10

6

11

1

APR. 1923
RUSSELLVILLE
Ky.

60'

NOWEN ST.

5

W. 3RD ST. (PEARL)

N. BLAKEY ST.

13

1

3

4

LIME WORK

L.M. REPAIR DEPOT

CONC. FL. FOUNDATION

THE PURE ICE & COAL CO.
20 TON OBSERVATION SYSTEM, NO. 10
WITH CHIMNEY, HEAT SYSTEM, STEAM
ELEC. PUMP, COM.



50

N. BETHEL

W. 2ND ST.

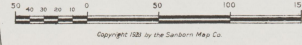
CORNELIUS AV.

12

14

101

Scale of Feet.



Copyright 1923 by the Sanborn Map Co.

4

14

4

APR. 1923
RUSSELLVILLE
KY.

CORNELIUS AV.

L. & N. R.R.

W. 1ST ST.

(SANDERS)

E. 1ST ST.

ST.

N. MAIN

(BARCLAY)

E. 2ND ST.

ST.

W. 2ND ST.

W. 3RD ST.

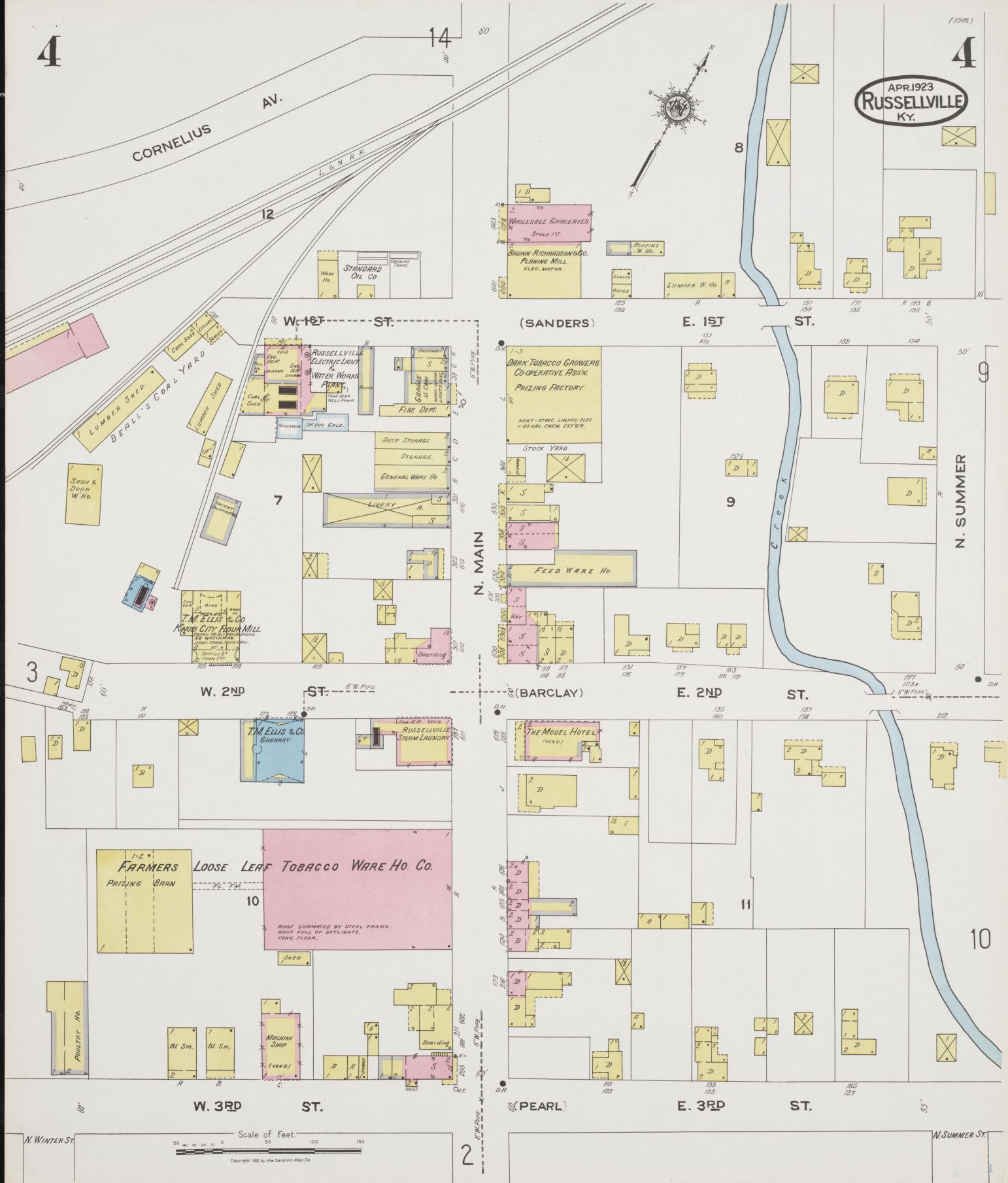
ST.

(PEARL)

E. 3RD ST.

ST.

N. SUMMER ST.



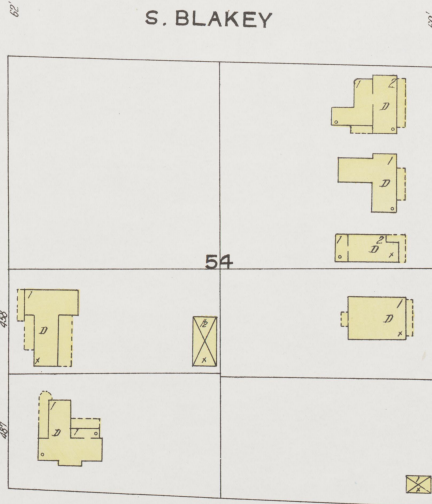
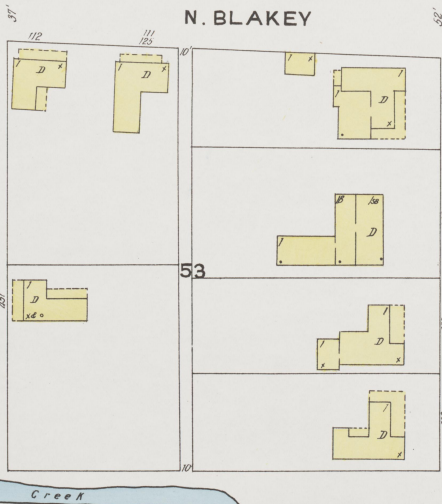
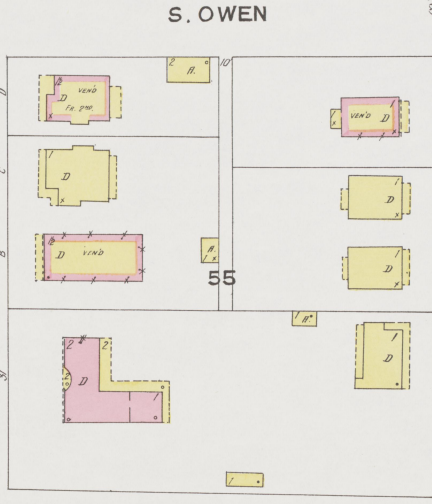
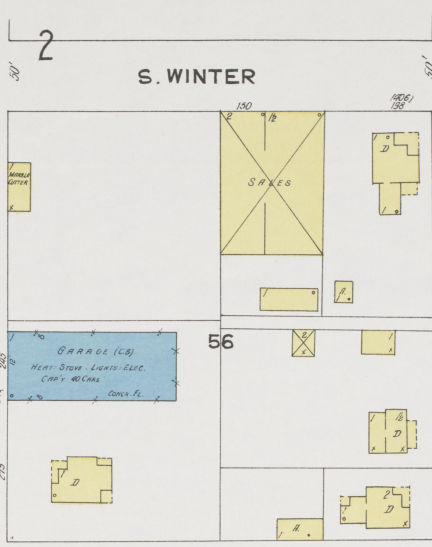
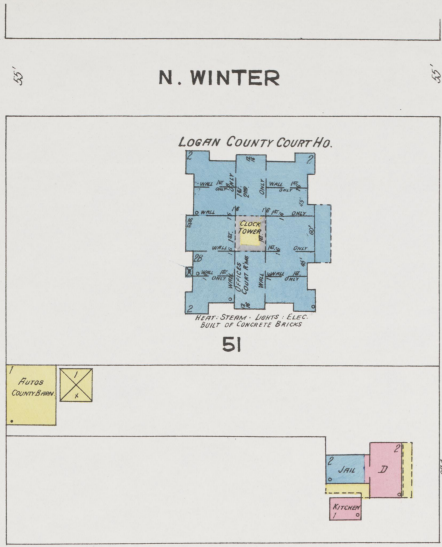
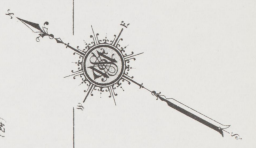
Scale of Feet.

0 10 20 30 40 50 60 70 80 90 100 110 120 130 140 150

Copyright 1923 by the Sanborn Map Co.

2

APR. 1923
RUSSELLVILLE
KY.



3

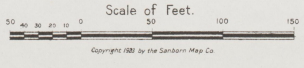
W. 3RD ST. (PEARL)

W. 4TH ST. (CENTRE)

W. 5TH ST. (BANK)

6

13



6

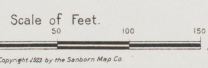
2

8

6



APR. 1923
RUSSELLVILLE
 KY.

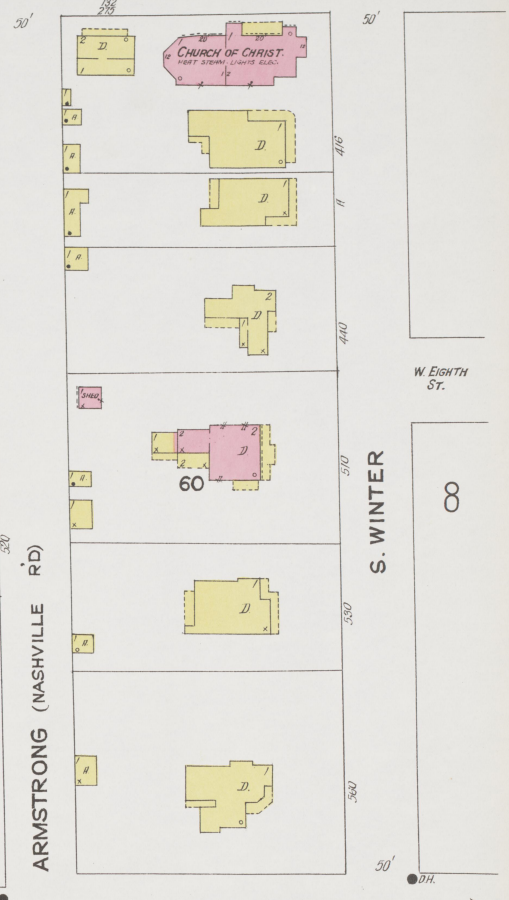
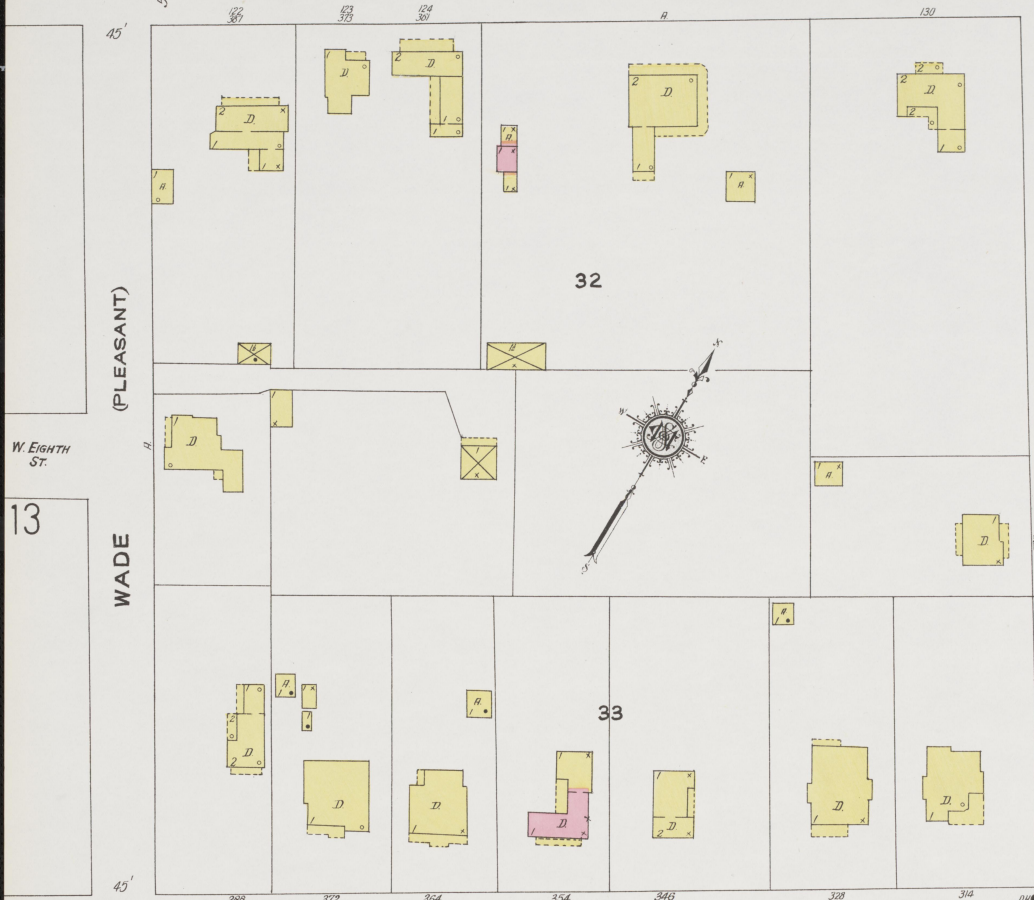


13

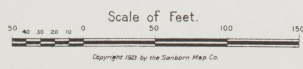
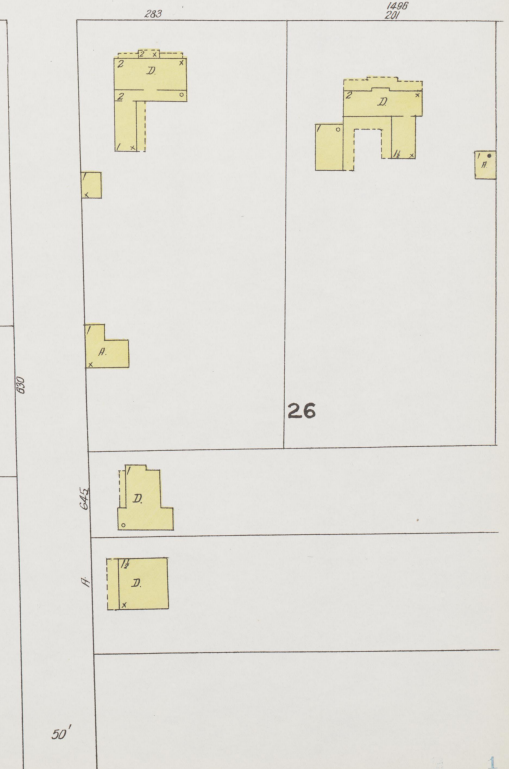
1

APR. 1923
RUSSELLVILLE
KY.

W. 7TH ST. (CEDAR)



W. 9TH ST. (HIGH)



APR. 1923
RUSSELLVILLE
KY.



8

8

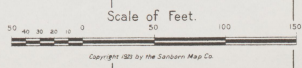
6

11

S. WINTER

S. SUMMER

7



1

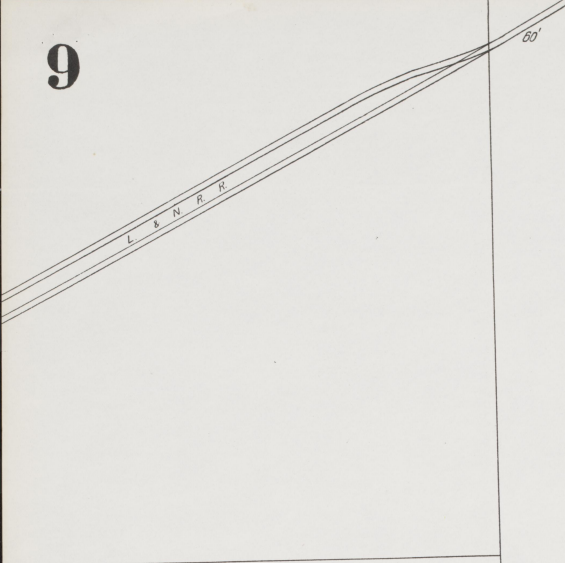
9

9

APR. 1923
RUSSELLVILLE
Ky.



103



8

JOHNSON

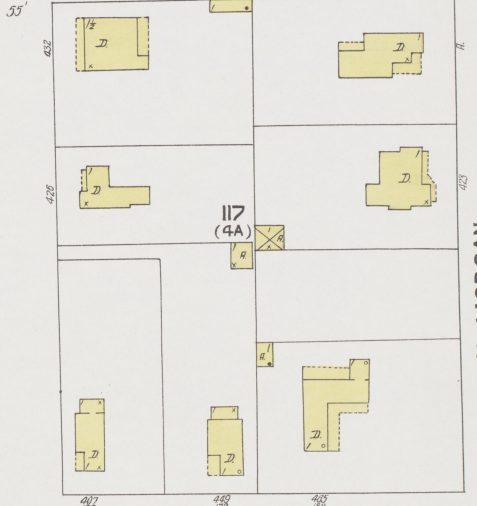
14

N. BREATHITT

N. MORGAN



E. 1ST ST. (SANDERS)



N. SPRING

12

4

N. SUMMER

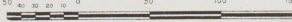


118 (8A)

119 (5A)

E. 2ND ST. (BARCLAY)

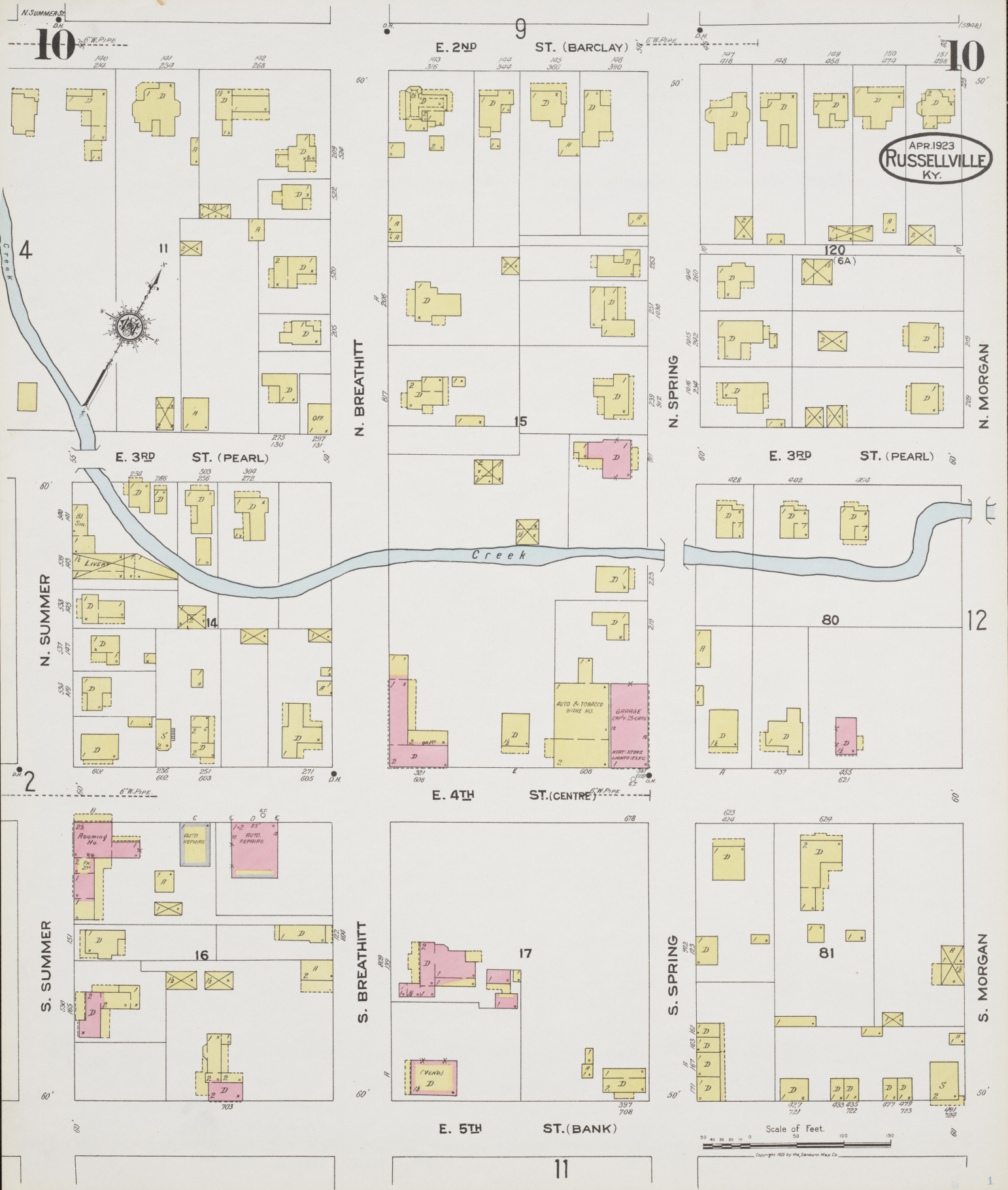
Scale of Feet.



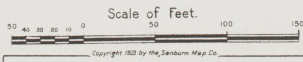
Copyright 1923 by the Sandborn Map Co.

10

1



APR 1923
RUSSELLVILLE
 KY.



10

9

10

E. 2ND ST. (BARCLAY)

E. 3RD ST. (PEARL)

E. 3RD ST. (PEARL)

E. 4TH ST. (CENTRE)

S. SUMMER

S. BREATHITT

S. SPRING

S. MORGAN

E. 5TH ST. (BANK)

11

4

11

14

15

80

12

16

17

81

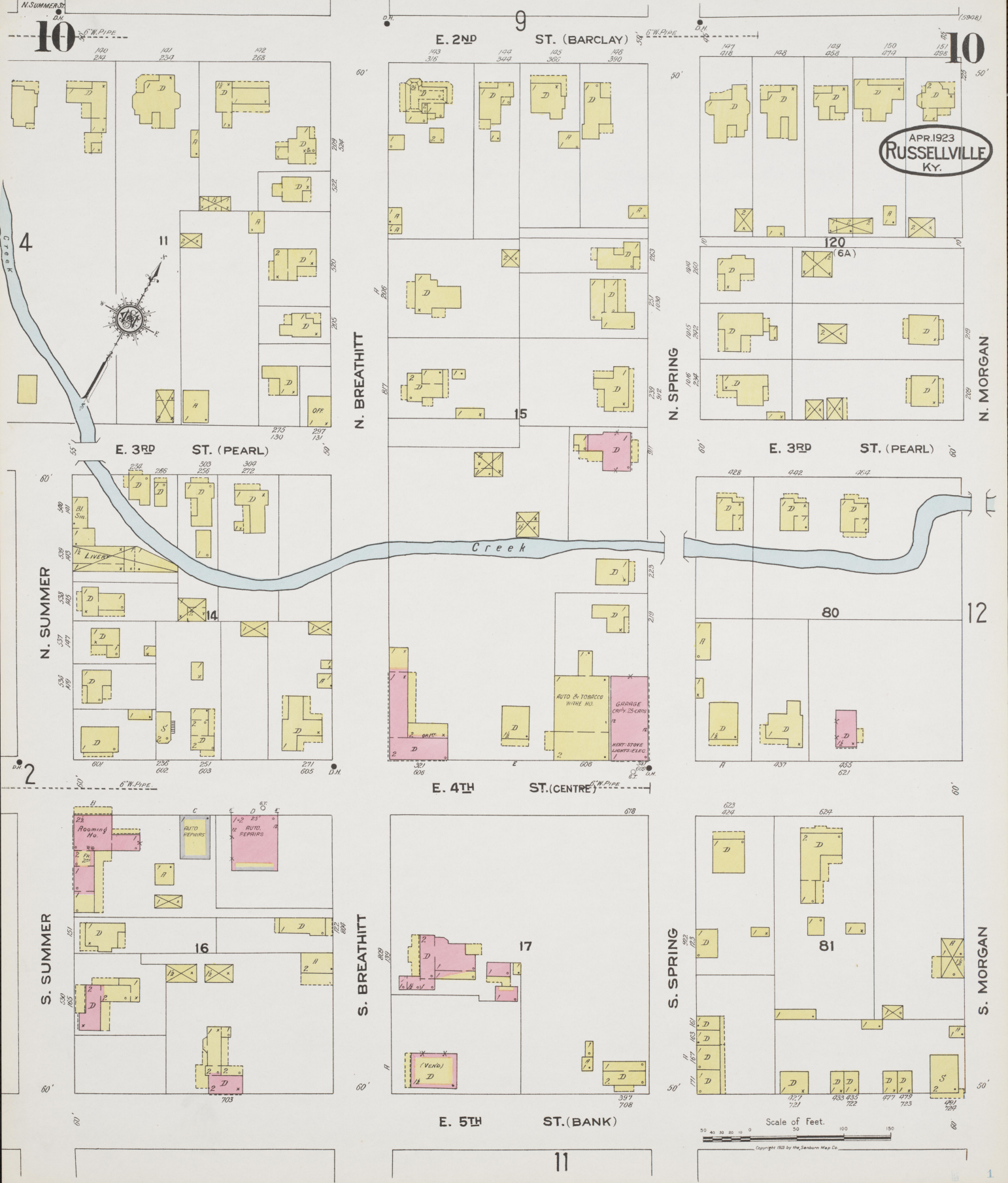
APR 1923
RUSSELLVILLE
 KY.

120
 (6A)

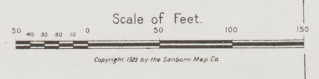
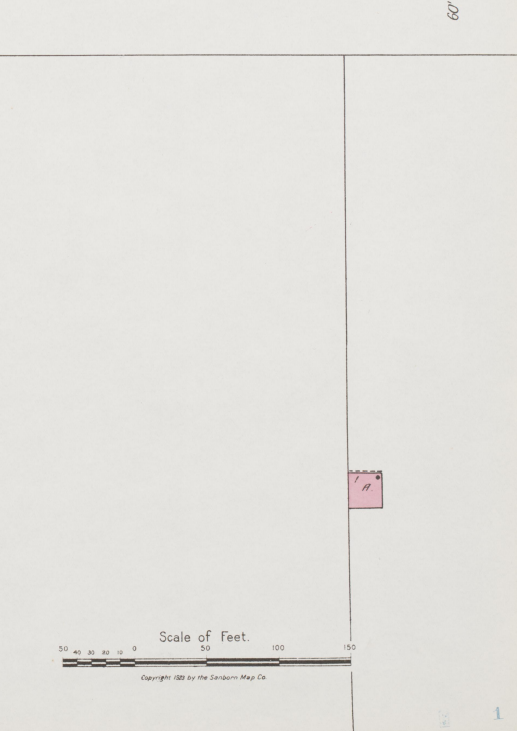
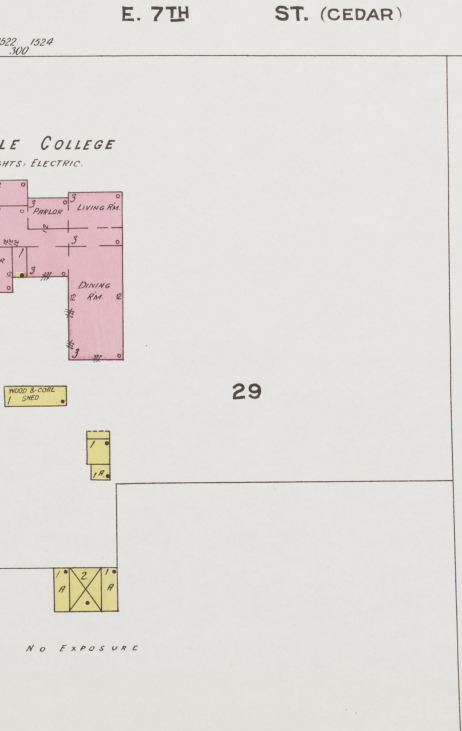
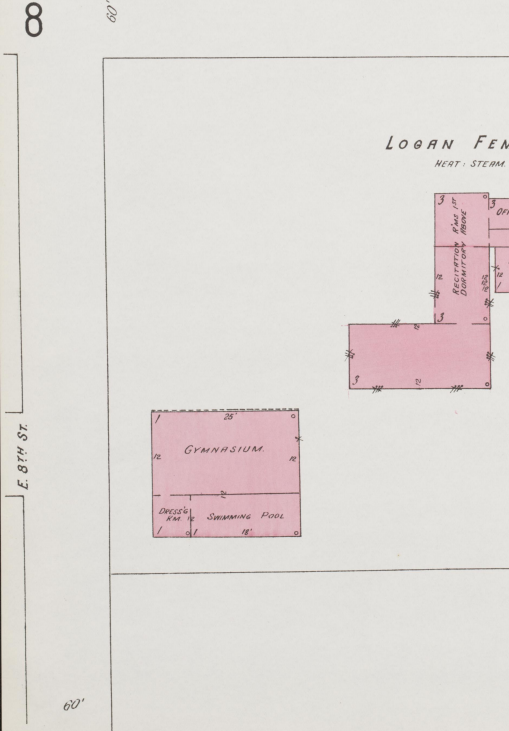
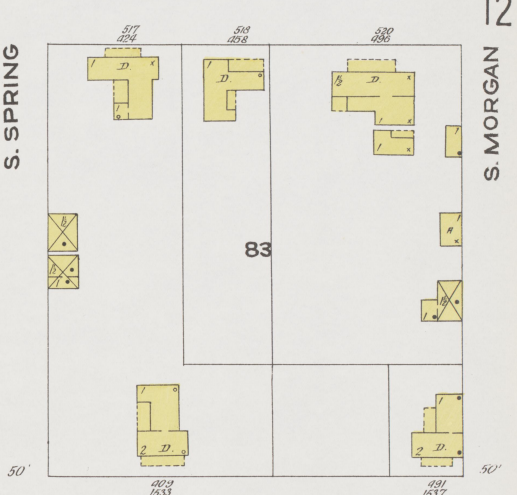
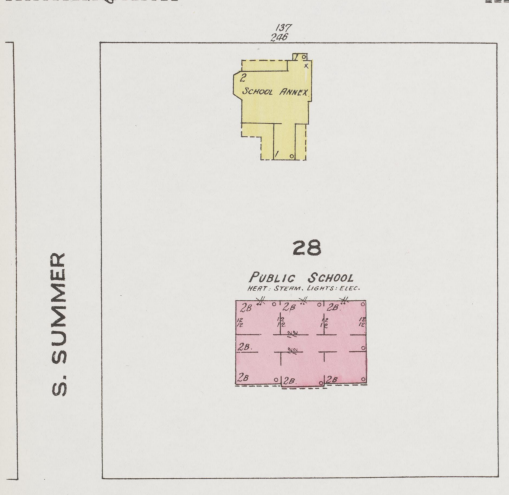
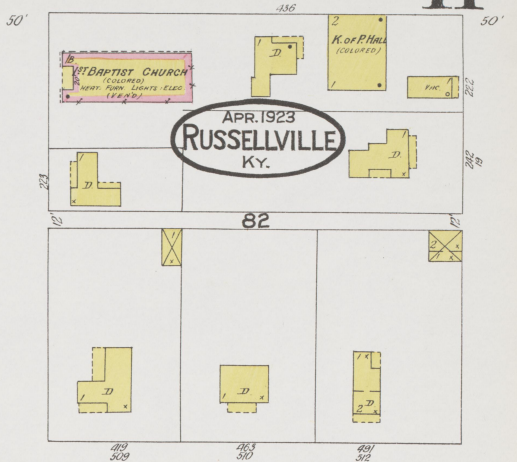
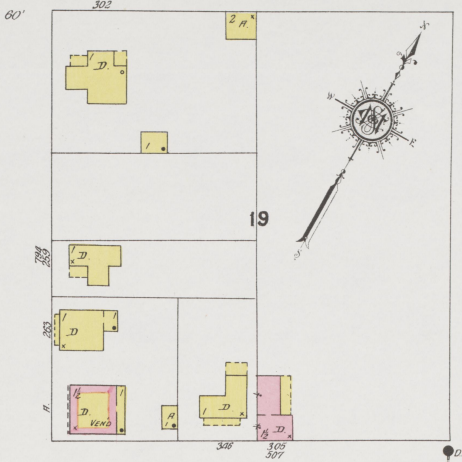
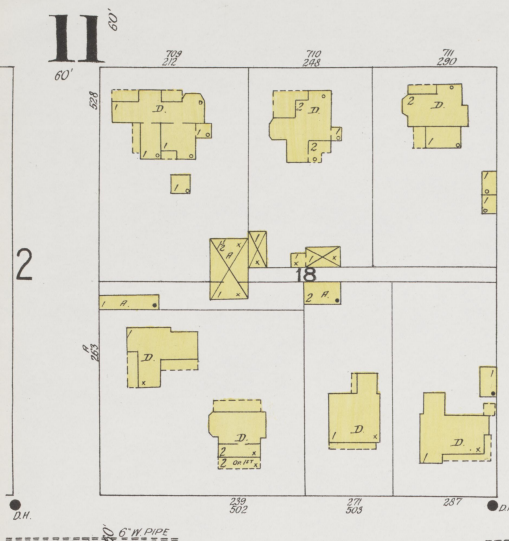
AUTO & TOBACCO
 WARE HO.
 GARAGE
 CRAFT 25 CARS
 MEAT STORE
 LIGHTS-ELEC

Rooming
 Ho.
 AUTO REPAIRS
 1-2 RUM REPAIRS

(VEND.)



E. 5TH 10 ST. (BANK)



12

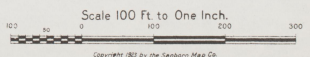
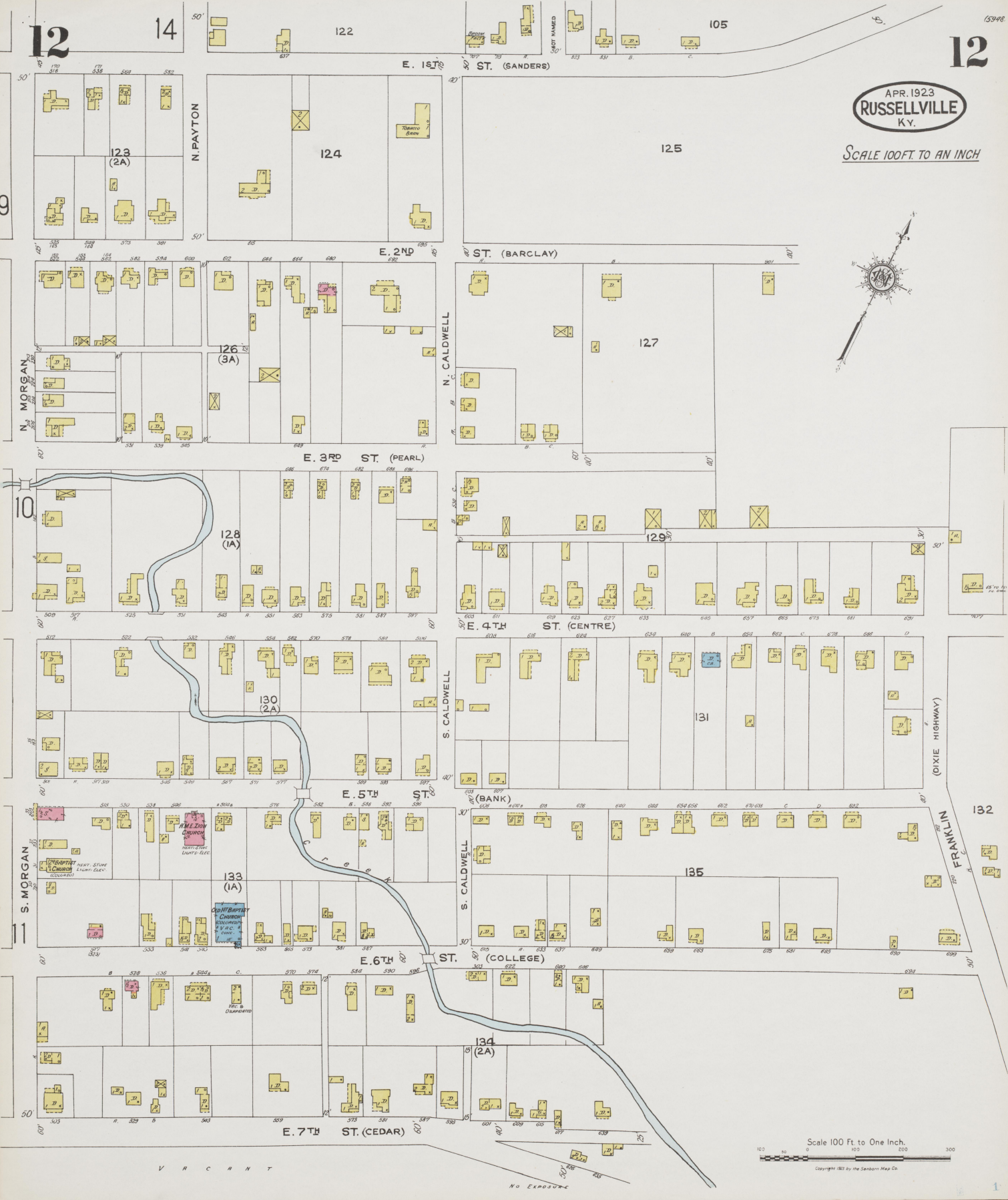
14

12

15948

APR. 1923
RUSSELLVILLE
KY.

SCALE 100 FT. TO AN INCH



Scale 100 Ft. to One Inch.
Copyright 1923 by the Sanborn Map Co.

V R C A N T

NO EXPOSURE

SCALE 100 FT. TO AN INCH



109

108

106

107

6

110

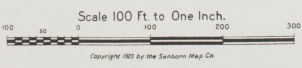
32

111

35

14

112



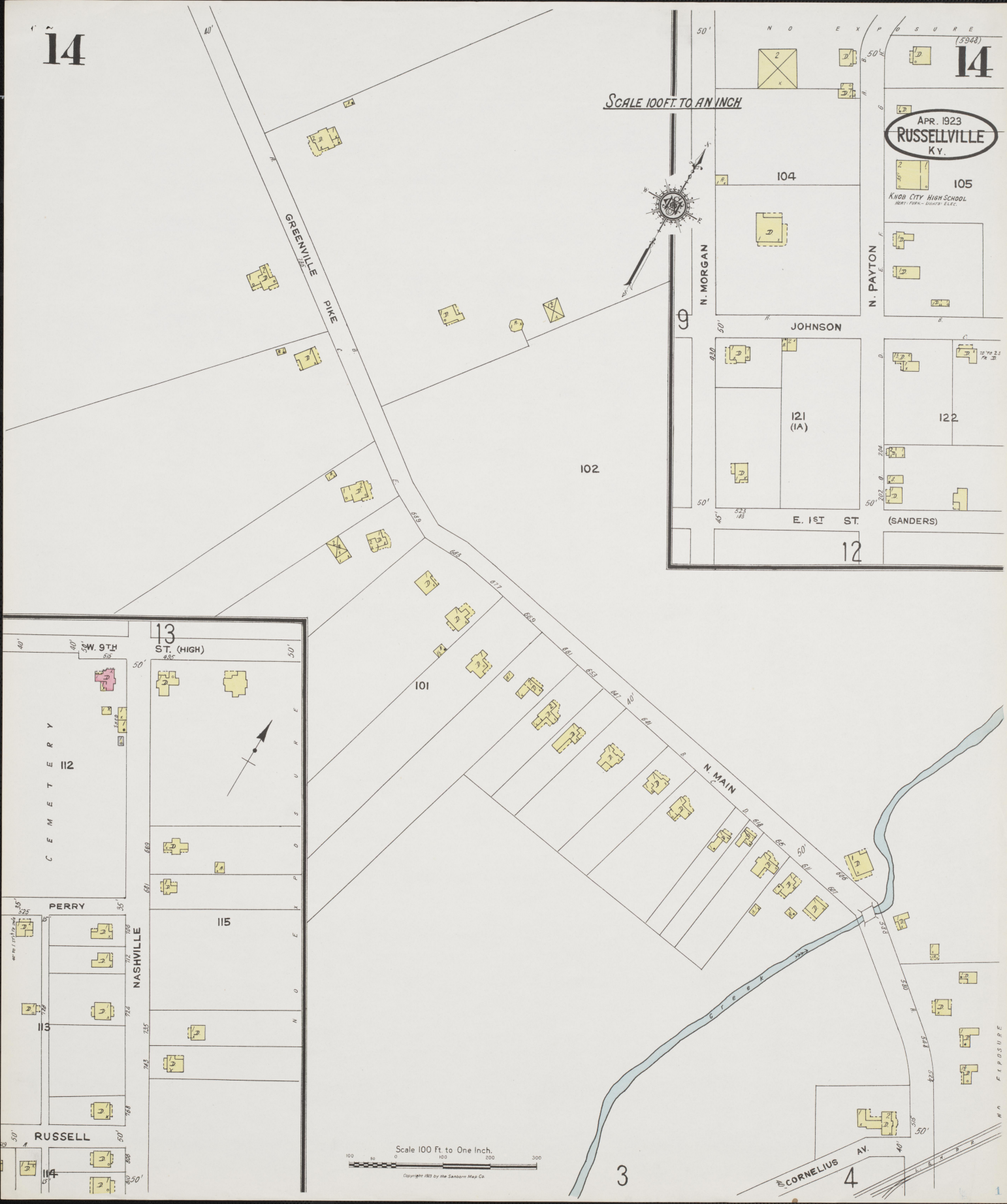
Scale 100 Ft. to One Inch.

Copyright 1923 by the Sanborn Map Co.

SCALE 100 FT. TO AN INCH

APR. 1923
RUSSELLVILLE
KY.

KNOX CITY HIGH SCHOOL
1801 PARK - 100 FT. ELEV.



Scale 100 Ft. to One Inch.
Copyright 1923 by the Sanborn Map Co.