



Official Program 25c

# WEST VIRGINIA vs. KENTUCKY

Saturday, Nov. 14, 1942

Stoll Field

# THE KENTUCKIAN

LEXINGTON'S NEWEST HOTEL

YOU'LL FIND YOUR VISIT TO OUR  
HOTEL AS PLEASING AS A  
'WILDCAT VICTORY'

FRIENDLY, PERSONALIZED SERVICE  
RADIO, BATH AND ICE WATER IN EVERY ROOM

VISIT OUR NEW  
AIR CONDITIONED GRILL ROOM

T. H. HARDWICK & PAUL McBRAYER  
Managers

SUKY CIRCLE SERVING YOU



Dixie Ice Cream Co., Inc.

Lexington, Ky.

**FOOTBALL**  
**University of Kentucky**  
**vs. West Virginia**

**STOLL FIELD**

**Lexington, Kentucky**

**SATURDAY, NOVEMBER 14, 1942**

Published by the Athletics Department of the University of  
Kentucky, Lexington, Kentucky

*Represented for National Advertising by DON SPENCER COMPANY, INC., 271 Madison Ave., New York City.*

**FROM THE KICK-OFF**  
to the last moment of play, we're pulling for  
the Wildcats to  
**WIN FOR U. OF K.**

**First National Bank & Trust Company**

Lexington's Oldest and Largest Bank

Member Federal  
Reserve System

Member Federal Deposit  
Insurance Corporation

**BUY MORE WAR BONDS**

## THE LAFAYETTE HOTEL

extends a cordial welcome and an invitation to the football fans to meet with us after the games — renew old friendships, greet new friends and enjoy the spirit of good fellowship that abounds.

### 15% DISCOUNT ON ALL CASH AND CARRY

Make Use of Our Convenient Drive-in Facilities

### *De Boor*

Laundry - - - Dry Cleaning

PHONE 2000

265 EUCLID AVE.

#### THE WHITE SPOT WELCOMES YOU

We are always ready to serve you the best of Foods at any time—for 24 hours a day—

. . . we put the O. K. in Cooking

#### The White Spot

George Sarras—103 East Main Street

#### RENT A CAR!

Phone 648

—NEW—

Fords and Plymouths

#### FORD U-DRIVE-IT

139 E. Short Street

Compliments of

**J. P. WRIGHT and B. C. JONES**

### SPOTSWOOD SPECIALTY COMPANY, Inc.

Phone 705 — Lexington, Ky.

DANCE FAVORS  
SERPENTINE

BALLOONS  
HATS

CONFETTI  
HORNS

Pencils — Leather Goods — Calendars, Etc., Etc.

Originators and Manufacturers of Advertising Specialties



**HON. KEEN JOHNSON**  
Governor of Kentucky

Eats, Drinks and Smokes

## Dunn Drug Store

Lime and Maxwell

PHONE 289

"The Home of Dunn's  
Better Ice Cream"

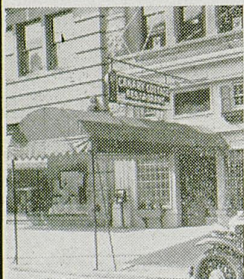
Lexington's Most Beautiful Drug Store

Foundation For Good Health

## Honey Krust Bread

Contains All Necessary Vitamins

**MEET** AFTER THE GAME IN



128 E. MAIN

## Canary Cottage

AIR-CONDITIONED  
FOR YOUR  
COMFORT

THE SOUTH'S MOST BEAUTIFUL  
COCKTAIL LOUNGE . . . . .

also

- Cincinnati
- Louisville
- Indianapolis

## Cropper's Laundry

(Incorporated)

137 NORTH LIMESTONE

Phone 210

Zoric Cleaning Is Odorless

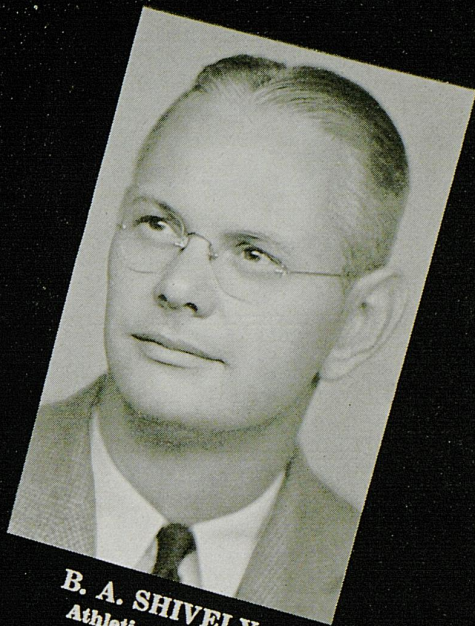


Work Called For and Delivered

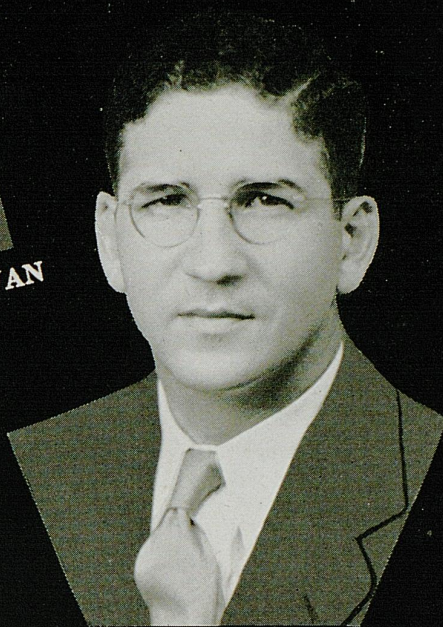
*U. of K.*



**PRESIDENT H. L. DONOVAN**



**B. A. SHIVELY**  
Athletic Director



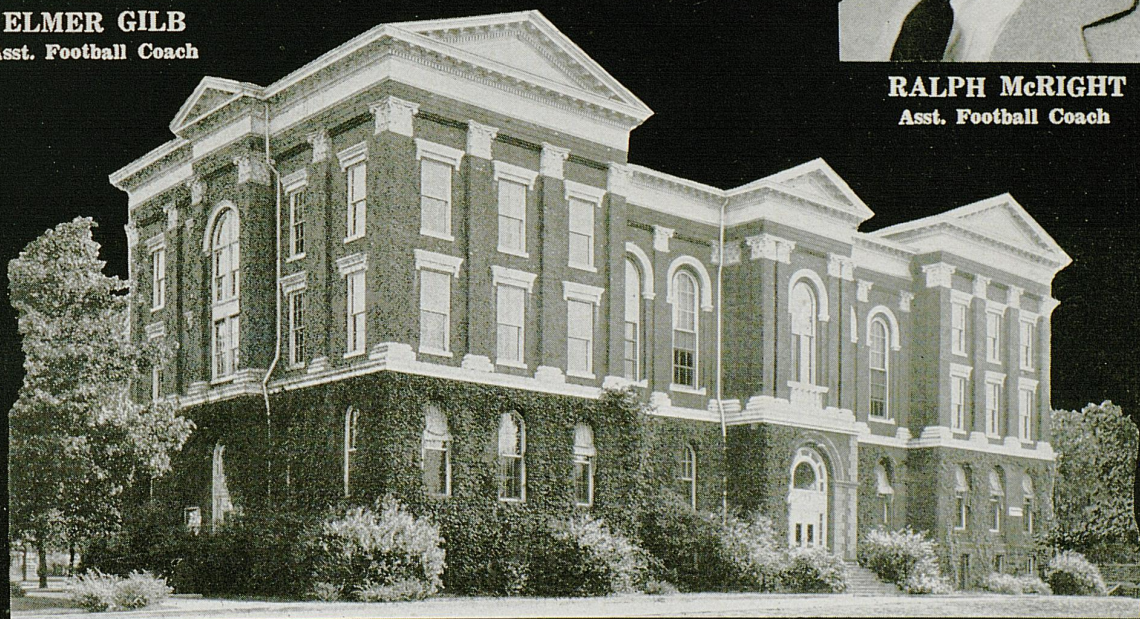
**AB KIRWAN**  
Head Football Coach



**ELMER GILB**  
Asst. Football Coach



**RALPH McRIGHT**  
Asst. Football Coach



**ADMINISTRATION BUILDING**

Long Distance Phone L. D. 99  
City Phones 7760, 7761, 7762, 7763

**Wombwell Automotive  
Parts Company**  
(Incorporated)

THE PARTS AND EQUIPMENT HOUSE  
151-153-155 East Short Street  
LEXINGTON, KENTUCKY

Compliments  
of  
**Fred Bryant Motor Co.**

**Hubbard and Curry**  
Druggists  
Short and Limestone  
Phone 1280

Compliments of  
**Lexington Yellow Cab**  
(Incorporated)

“SURE  
I'LL MEET YOU AT THE  
**PHOENIX DRUG**”  
Phoenix Hotel Block

**Weneker's Sample Shoe Store**

FAMOUS BRANDS SOLD ELSEWHERE \$7.50 to \$16.50  
SOLD HERE AT \$2.95-\$3.95-\$4.95. Others to \$7.95  
153 E. MAIN ST. Next To Strand Theatre

Compliments of  
**LEET BROTHERS FURNITURE STORE**  
Main and Broadway

*Axe the Axis--  
Buy War Bonds!*



**The Stirrup Cup**  
MAIN AND ASHLAND  
After the Game  
**FOXY FRANK**

That hale fellow, well met, friend of football appetites, Foxy Frank—frank cooked in butter, grilled in a bun with cheese and mustard and pickle relish; served on the curb or inside at the Stirrup Cup, Lexington's convenient drive-in eating places. Lunches, dinners, sandwiches, sodas.

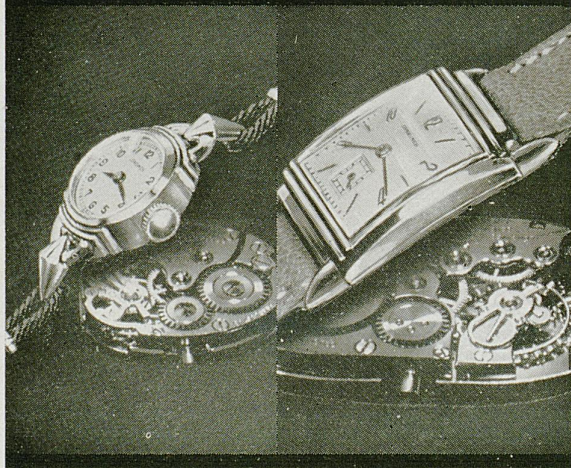
**The official football  
timing watch for  
University of Kentucky**

*Longines*  
**THE WORLD'S MOST HONORED WATCH**

Longines, official football timing watch for this game, is the sports world's most honored watch. For many years Longines Watches have timed the principal championship football, track, basketball, swimming, auto racing, aviation, ski, bobsledding, rodeo, and other sports events. For the 1940 Olympics Longines was selected as exclusive official watch; an honor which was repeated by the Organization Committee for the first Pan-American Sporting Games.

Other Longines honors include 10 world's fair grand prizes, 28 gold medals, and more acknowledgments of accuracy than have been won by any other timepiece. Throughout the world, no other name on a watch means so much as Longines, *the world's most honored watch.*

*The beating heart of every Longines Watch  
the Longines "Observatory Movement"*



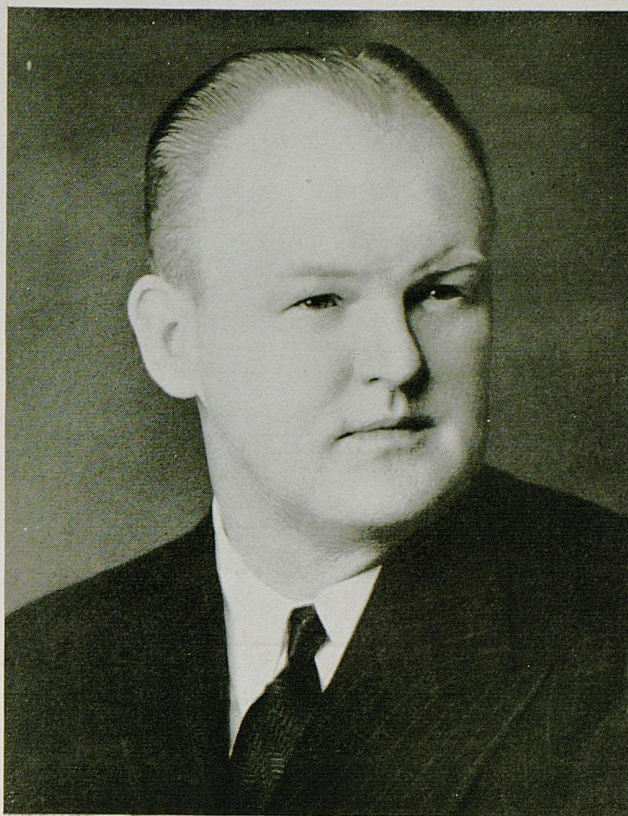
The skill, experience, and workmanship necessary for the construction of Longines Watches for precision timing, aviation, and navigation, are reflected in the greater accuracy of every Longines Watch at any price. And every Longines Watch contains the Longines "Observatory Movement," world-honored for greater accuracy and long life. Longines jewelers also sell the Wittnauer Watch, a companion line of moderate price, product of—  
Longines-Wittnauer Watch Company, 580 Fifth Avenue, New York, N. Y.

REG. U. S. PAT. OFF.



WILLIAM FRANKLIN KERN  
Head Football Coach  
of the Mountaineers,

now in his third season at West Virginia. Formerly head mentor at Carnegie Tech, where he was acclaimed "coach of the year" in 1938 when his team won its way to the New Orleans Sugar Bowl.



ROY M. HAWLEY  
Director of Athletics  
West Virginia University

Since 1938, this genial gentleman has guided the athletic destinies of the Mountaineers and guided them well. Known wherever he goes and by the thousands he meets as "Legs." Formerly University Alumni Secretary.



GO YOU

# WILDCATS



Hit 'Em Hard!

Hit 'Em Low!

COURTESY

**BANK OF COMMERCE**

For PERFECT DRY CLEANING Phone 62

**Lexington Laundry Company**

**Faulkner Builders & Supply Co.**

BUILDERS' SUPPLIES — COAL

585 East Third St.

Phone 2340

"BUY THE BEST—IT'S CHEAPER"

**Baugh & Garner**

(Incorporated)

COMPLETE HOME FURNISHERS

"If It Isn't Right We Make It Right"

Lexington

Danville

Compliments of

**ADES-LEXINGTON DRY GOODS CO.**

Lexington, Kentucky

**CENTRAL TOBACCO CO.**

CANDY AND TOBACCO SUPPLIES

225 Walnut St.

Phone 625

**Smith-Haggard Lumber Co.**

(Incorporated)

Building Contractors

901 East Third St.

Lexington, Ky.

YOU'LL

FIND



"CAROLYN"

HERE!

**B. B. Smith & Co.**  
(Incorporated)

Official Photographers for 1943 Kentuckian

All Kentuckian negatives are on file at our studios.

**Lafayette Studio**

141-143 N. Lime

Phone 6271

ACTION PICTURES OUR SPECIALTY

Compliments of

**Lexington Cab Company**

(Incorporated)

AFTER THE GAME

**"De Camp"**

BAR-B-Q

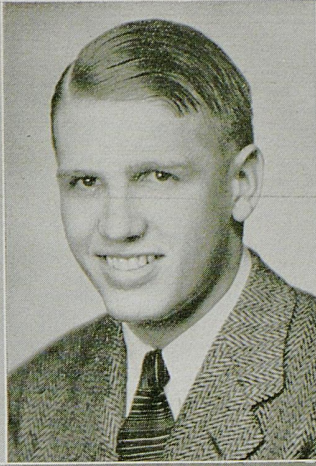
Limestone at Maxwell

"A Nickel Drink—Worth a Dime"



Pepsi Cola Bottling Co.

Phone 3500



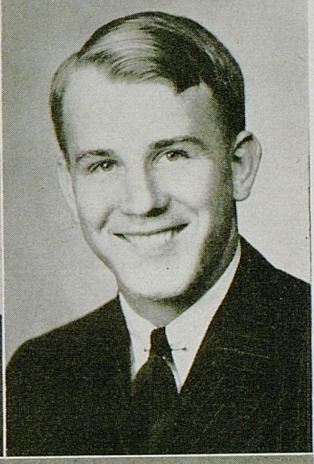
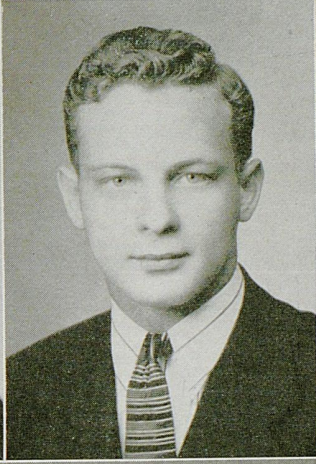
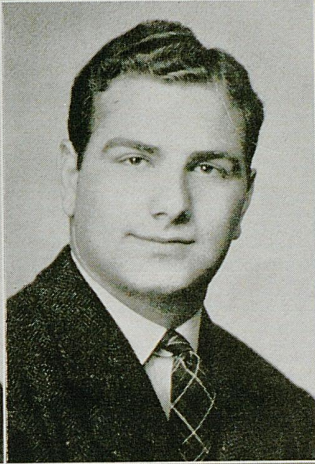
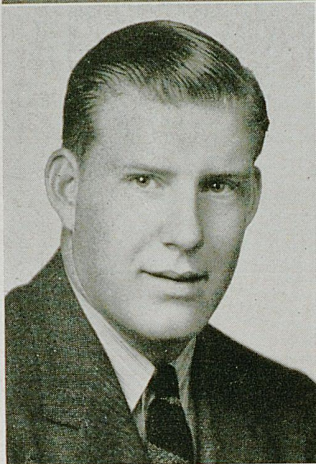
**W. VA.**

**NEIL MONTONE '44**  
End

**PETER YOST '43**  
Center

**WILLIAM GARDNER '43**  
Halfback

**LEO BENJAMIN '44**  
Center

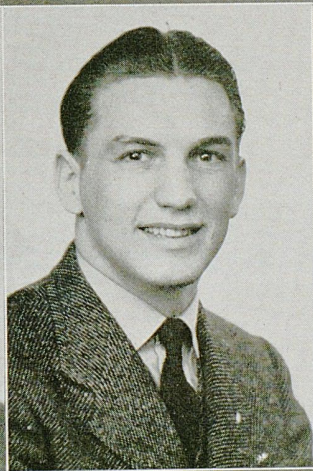
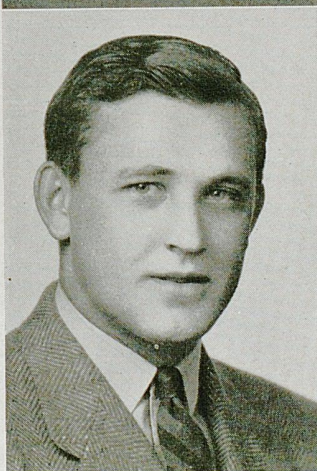


**WARDER POWELL '44**  
Tackle

**VINCENT CIMINO '43**  
Guard

**ALLAN MARTIN '43**  
Halfback

**VICTOR PEELISH '43**  
Guard

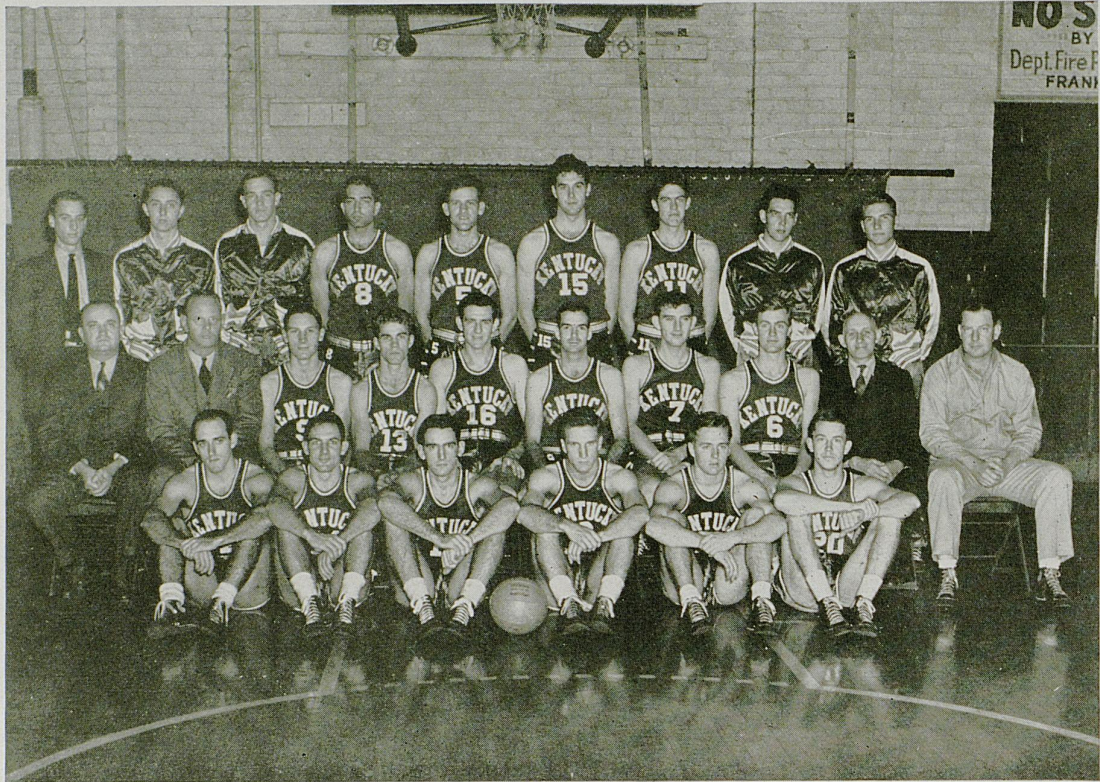


**CHARLES HELINSKI '44**  
Fullback

**GENE CORUM '44**  
Guard

**TONY PAULIN '44**  
Tackle

**JOHN MERCULAR '44**  
Tackle



Southeastern Conference Champions

## University of Kentucky BASKETBALL SCHEDULE — 1942-1943

<p>Dec. 5—Open 7—Open 12—Cincinnati ..... Here 16-17-18—Exams 19—Washington Univ. .... Here 23—Indiana ..... Louisville</p> <p>Jan. 2—Ohio State ..... Here 4—Ft. Knox ..... Here 8—Georgia (tentative) .... Here 10—Xavier ..... There 16—Tennessee ..... There 18—Georgia (tentative) .... There</p>	<p>19—Georgia Tech ..... There 23—Notre Dame ..... Louisville 26—Vanderbilt ..... Here 30—Alabama ..... There</p> <p>Feb. 1—Vanderbilt ..... There 6—Alabama ..... Here 8—Xavier ..... Here 13—Tennessee ..... Here 15—Georgia Tech ..... Here 20—DePaul ..... Chicago 25-26-27—Tournament .. Louisville</p> <p>Mar. 6—Great Lakes ..... Louisville</p>
--	---

**JOHNNY  
CALLS 'EM**

# SIGNALS & PENALTIES



Holding. (Penalty—by offense, 15 yards; by defense, 5 yards.)



Time out.



Offside or violation of kick-off formation. (Penalty 5 yards.)



Penalty refused, incomplete pass, missed field goal or conversion, both sides offside, etc.

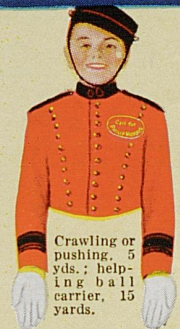


Delay of game or extra time-outs. (Penalty, 5 yards.)



Illegal forward pass.

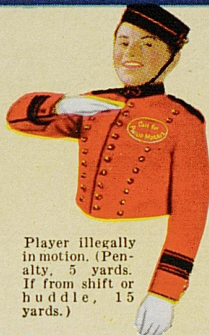
**You can't help inhaling—But you can help your throat!**



Crawling or pushing, 5 yds.; helping ball carrier, 15 yards.



Safety.



Player illegally in motion. (Penalty, 5 yards. If from shift or huddle, 15 yards.)



Score — touchdown, field goal, or conversion.



Unnecessary roughness, illegal defensive use of the hands, clipping, running into or roughing the kicker (Penalty, 15 yards.)



Intentional grounding of forward pass. (Penalty — loss of down and 15 yard penalty from spot of preceding down.)

**Philip Morris superiority is recognized by eminent medical**



Illegal formation or position of one or more players. (Penalty—5 yards from where ball was put in play.)



Illegal touching of kicked ball inside opponent's 10-yard line—touchback.



Unsportsmanlike conduct. (Penalty —15 yards.) For flagrant unsportsmanlike conduct—15 yard penalty and disqualification.



Interference with forward pass, pass touching ineligible player, or "screening" pass receiver. (If penalty on offense, when interference occurs beyond line of scrimmage, 15 yards and loss of down; on or behind line of scrimmage, loss of down only. Interference by defense, ball to offense on spot of foul as first down.)

**authorities. For smoking pleasure without penalties—**



**CALL FOR PHILIP MORRIS!**  
**AMERICA'S FINEST CIGARETTE**

BE BETTER FITTED  
IN  
*Baynham's*  
SHOES OF DISTINCTION

for  
**MEN AND WOMEN**

•  
Smart Styles

for  
On and Off the Campus

•  
135 E. Main Street

also in Louisville, Ky. and Nashville, Tenn.

## "THE GLASS KEY"

starring

VERONICA LAKE

BRIAN DONLEVY

ALAN LADD

Midnight Preview

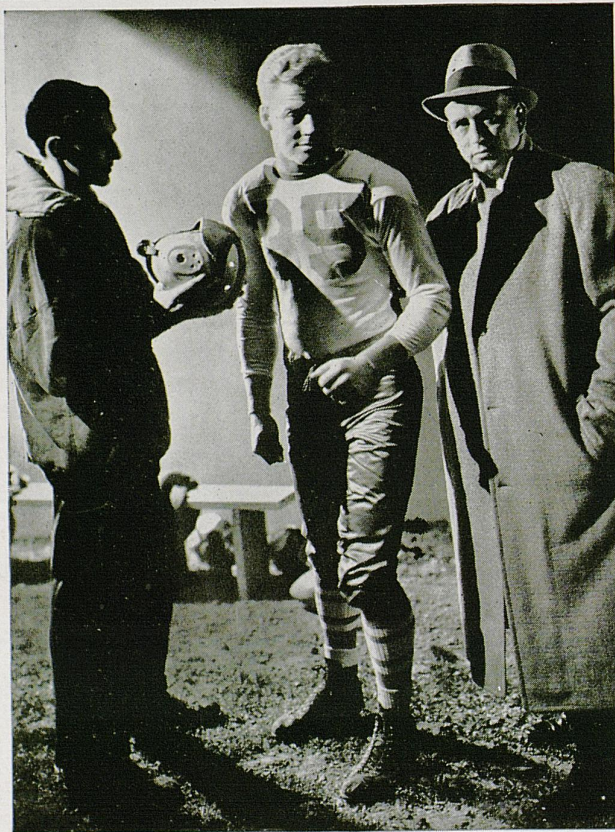
Tonight

At 11:30 P. M.

(Regular Run—Sunday through Wednesday)

# BEN ALI

## THEATRE



In Today's Game

## THE WILDCATS

Are Wearing

# GoldSmith

*Preferred*  
TRADE MARK

### FOOTBALL EQUIPMENT

Coaches, players and trainers of leading colleges and universities use and endorse Goldsmith athletic equipment. They know Goldsmith products represent the utmost in value and service.

Today, in the Armed Forces, in the Army, in the Navy, and in the Air Force, Goldsmith athletic equipment is doing its bit to make our men physically fit for the big job on hand.

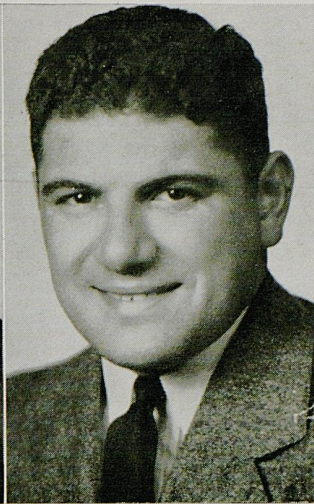
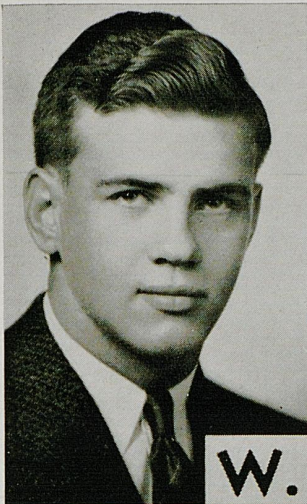
There is Goldsmith equipment for every sport. The name "Goldsmith" has been a hallmark of quality for over 65 years.

### THE SMITH-WATKINS CO.

Distributors

236 E. Main St.

Lexington, Ky.



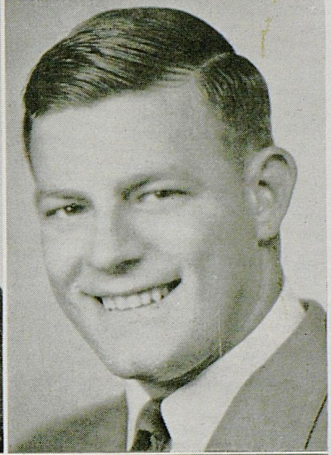
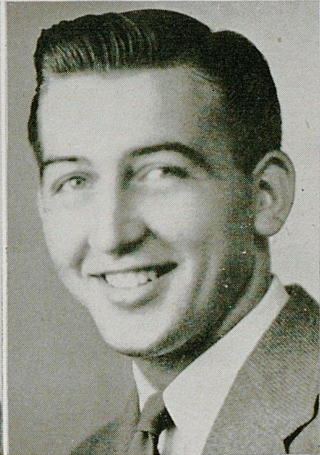
W. VA.

**GEORGE FATT '44**  
End

**JOHN RYAN '44**  
Halfback

**JOSEPH SALUCCI '44**  
Guard

**JOHN KATCHUR '43**  
Halfback

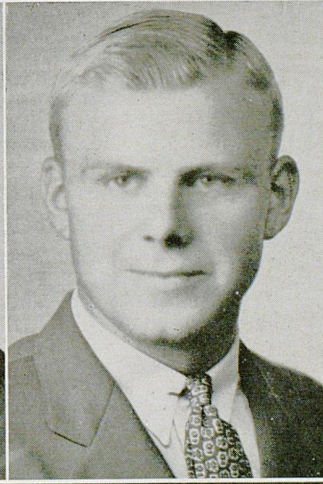
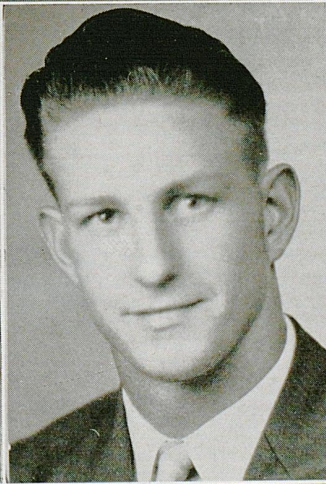
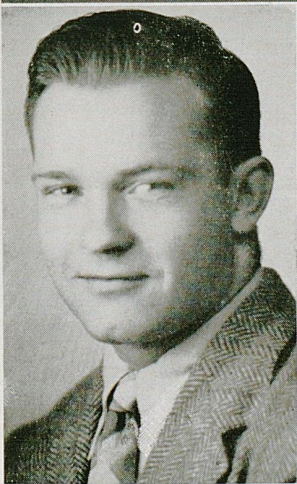


**LESLIE PALMER '45**  
Halfback

**ALFRED JONES '46**  
Halfback

**JOHN POZEGA '45**  
Center

**ROBERT THOMAS '44**  
Center

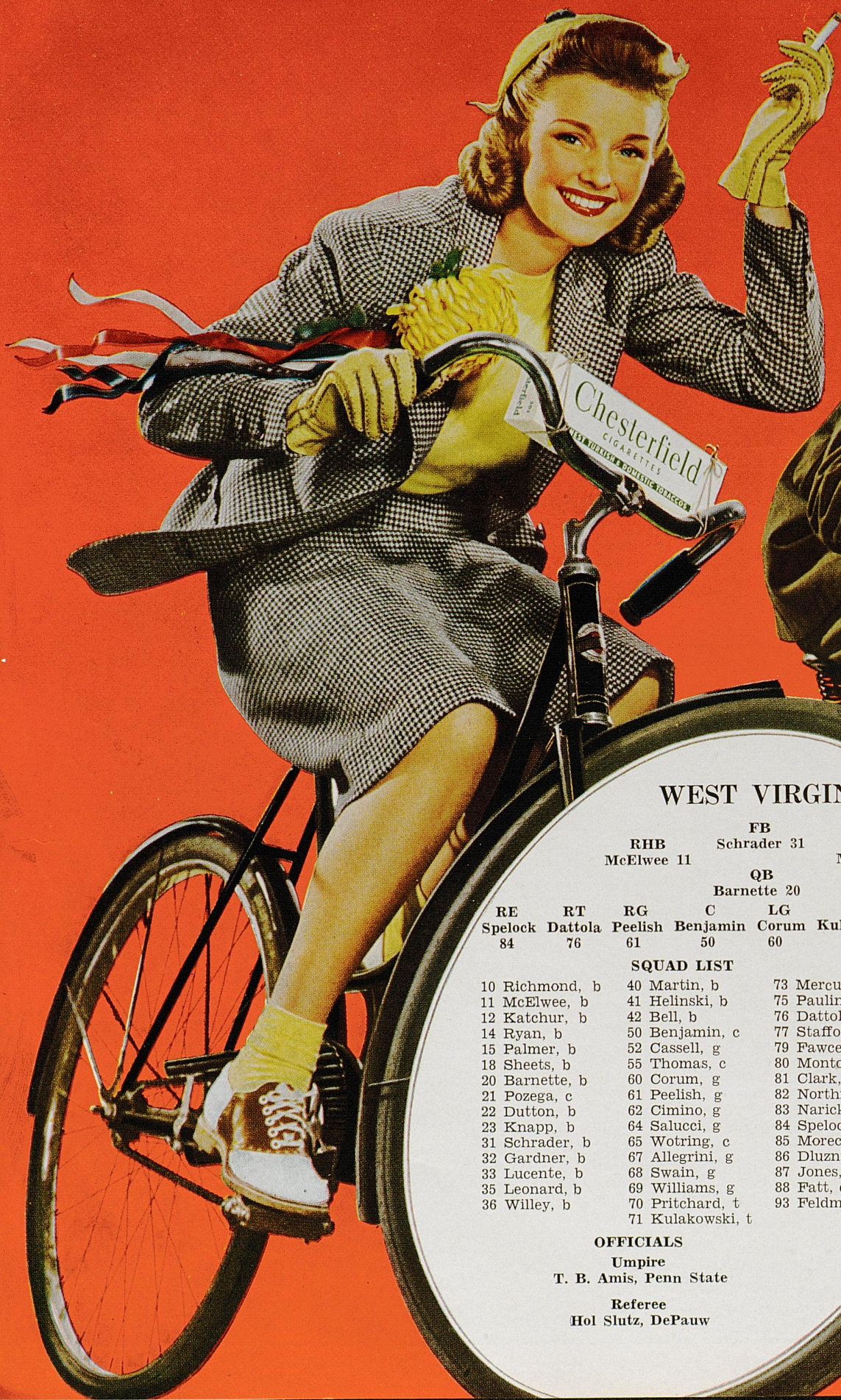


**EDWIN LUCAS '45**  
Halfback

**RICHARD NORTHROP '46**  
End

**CHARLES SWAIN '46**  
Guard

**FRED MORECRAFT '45**  
End



## WEST VIRGINIA

**RHB** Schrader 31      **LHB** Martin 40  
**McElwee** 11

**QB**  
 Barnette 20

<b>RE</b>	<b>RT</b>	<b>RG</b>	<b>C</b>	<b>LG</b>	<b>LT</b>	<b>LE</b>
Spelock	Dattola	Peelish	Benjamin	Corum	Kulakowski	Clark
84	76	61	50	60	71	81

### SQUAD LIST

10 Richmond, b	40 Martin, b	73 Mercular, t
11 McElwee, b	41 Helinski, b	75 Paulin, t
12 Katchur, b	42 Bell, b	76 Dattola, t
14 Ryan, b	50 Benjamin, c	77 Stafford, e
15 Palmer, b	52 Cassell, g	79 Fawcett, b
18 Sheets, b	55 Thomas, c	80 Montone, e
20 Barnette, b	60 Corum, g	81 Clark, e
21 Pozega, c	61 Peelish, g	82 Northrop, e
22 Dutton, b	62 Cimino, g	83 Narick, e
23 Knapp, b	64 Salucci, g	84 Spelock, e
31 Schrader, b	65 Wotring, c	85 Morecraft, e
32 Gardner, b	67 Allegrini, g	86 Dluznieski, t
33 Lucente, b	68 Swain, g	87 Jones, b
35 Leonard, b	69 Williams, g	88 Fatt, e
36 Willey, b	70 Pritchard, t	93 Feldman
	71 Kulakowski, t	

### OFFICIALS

**Umpire**  
 T. B. Amis, Penn State

**Referee**  
 Hol Slutz, DePauw





# It's all the GO CHESTERFIELD

Smokers cheer for the cigarette that really performs... gives them a Milder smoke... cheers them with its Cooler, Better Taste—

— that's **CHESTERFIELD**



## KENTUCKY

**RHB**  
Kuhn 5

**FB**  
Herbert 24

**LHB**  
Cutchin 48

**QB**  
Ewing 2

<b>RE</b> Eblen 39	<b>RT</b> Wood 47	<b>RG</b> Beck 6	<b>C</b> Walker, C. 41	<b>LG</b> Colvin 44	<b>LT</b> Johnson 8	<b>LE</b> Sengle 25
--------------------------	-------------------------	------------------------	------------------------------	---------------------------	---------------------------	---------------------------

### SQUAD LIST

2 Ewing, q	28 Jones, g	41 Walker, C., c
5 Kuhn, h	29 Meeks, h	42 Griffin, t
6 Beck, g	30 Welborn, g	43 Drury, t
8 Johnson, t	31 Kohl, t	44 Colvin, g
15 Hoyer, h	32 Triplett, c	45 Bell, b
18 Lair, q	33 Yarutis, g	46 Rhodemyre, c
20 Taylor, e	34 Hammer, q	47 Wood, t
22 Browning, g	36 Althaus, e	48 Cutchin, h
23 Minor, e	37 Kafoglis, t	50 Walker, P., h
24 Herbert, f	38 Casner, g	51 Parr, e
25 Sengle, e	39 Eblen, e	53 Moseley, q
26 Kessinger, q	40 Edwards, e	54 Webb, t
27 Tunstill, h		55 Hurst, f

### OFFICIALS

Linesman  
John McPhee, Ohio

Field Judge  
John J. Durkin, St. Edwards





GO YOU

# WILDCATS



Hit 'Em Hard!

Hit 'Em Low!

## Metropolitan Restaurant

"FAMOUS FOR"  
STEAKS — CHOPS

107-111 W. Main

Lexington, Ky.

## Kentucky Ignition Co., Inc.

DISTRIBUTORS AUTOMOTIVE EQUIPMENT

Rose Street at Vine

Lexington, Ky.

PHONES 2681 - 2682 - 2683

## PERRY LUMBER COMPANY

(Incorporated)

246 Walton Avenue

Phone 5500

"Builders of Better Homes"

CAREY ROOFING LUMBER YALE HARDWARE

## The Sherwin-Williams Co.

All You Need to Know About Paint

350 W. MAIN STREET

PHONE 8100

## Transylvania Printing Co.

(Incorporated)

Printers — Stationers — Office Outfitters

Parker — Sheaffer — Eversharp Fountain Pens

Christmas Card Headquarters

108 N. Upper St.

Established 1872

Phone 34-35-36

Robt. S. Byors, Exec. Vice Pres.

Gayle M. Denny, Mgr.

Distributors for:

CARRIER  
KELVINATOR

Air conditioning's first name.

Commercial and domestic re-  
frigeration.

## Combs Lumber Company

(Incorporated)

439 E. Main St.

Telephone 5300

Compliments of

## Bryan - Hunt Company

(Incorporated)

WHOLESALE GROCERS

Lexington, Kentucky

## Skuller's

Lexington's Leading Jeweler and Silversmith

115 W. Main St.

Lexington, Ky.

"We Never Disappoint"

## Howard & Heafey

F L O R I S T S

Phones 404 - 440

Winchester Road

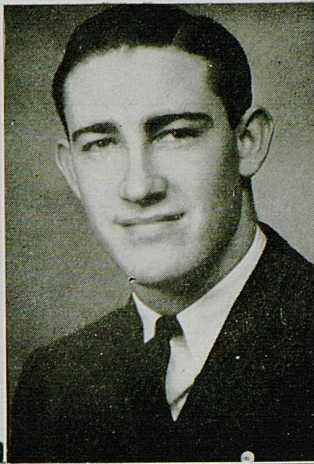
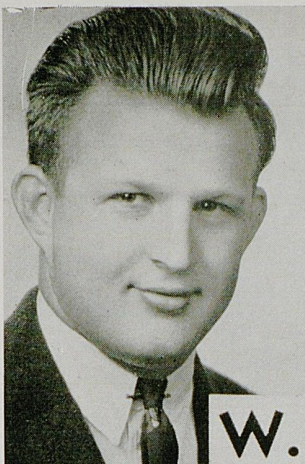
Lexington, Ky.

## Union Transfer & Storage Co.

MOVING AND STORAGE

Spring and Vine Streets

Phone 7030



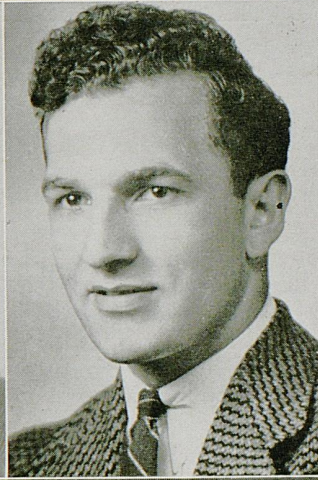
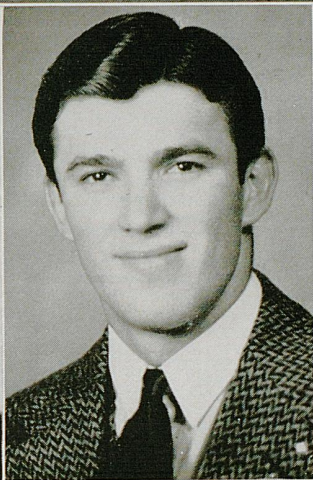
W. VA.

**CHESTER  
SPELOCK '44**  
End

**CHARLES  
SCHRADER '44**  
Fullback

**RICHARD  
McELWEE '43**  
Halfback

**QUENTIN  
BARNETTE '43**  
Quarterback

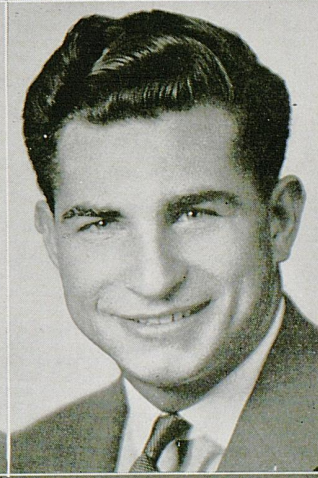
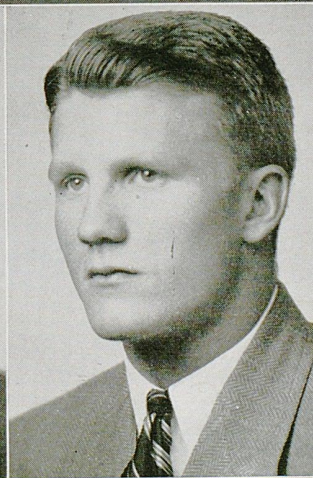


**VIRGIL  
WILLIAMS '44**  
Guard

**STEVEN NARICK '43**  
End

**LOUIS  
DATTOLA '44**  
Tackle

**EMIL ALLEGRINI '44**  
Guard



**EDMUND  
KULAKOWSKI '44**  
Tackle

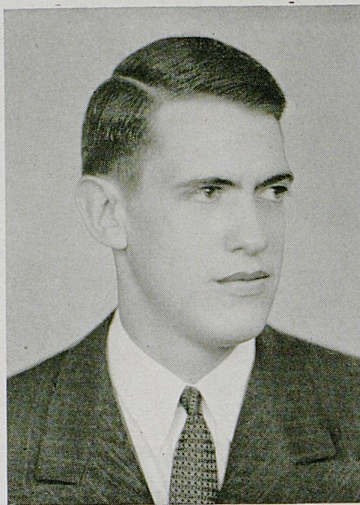
**WILLIAM BELL '44**  
Halfback

**ANDY CLARK '44**  
End

**ROBERT  
DUTTON '44**  
Quarterback



S. C. BROWN  
Equipment Manager



FRANK PARKS  
Senior Manager



FRANK MANN  
Trainer

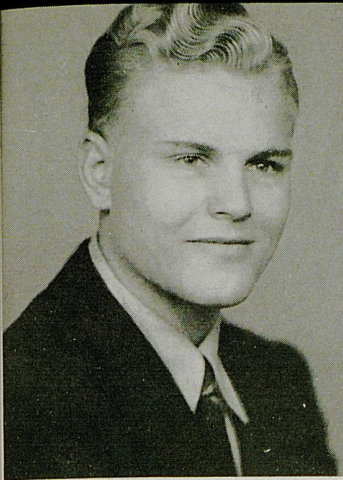
## *Kentucky Trainer & Managers*



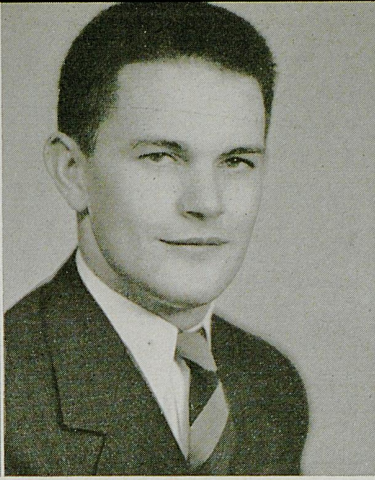
"South's Finest"

# COLONIAL BOWLING LANES

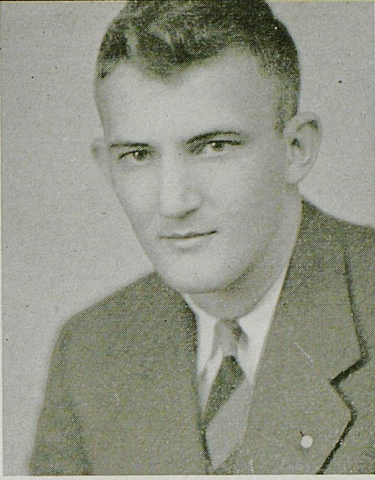
187 Euclid Ave.



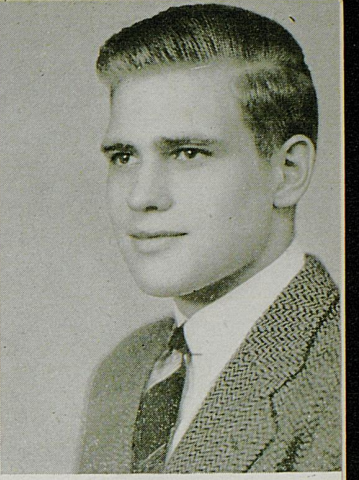
CLARK WOOD  
Tackle



TOM EWING  
Quarterback

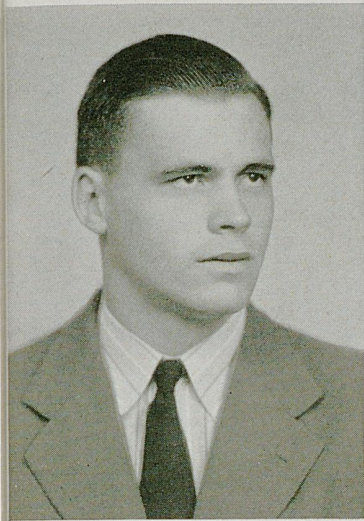


CHAS. EBLEN  
End

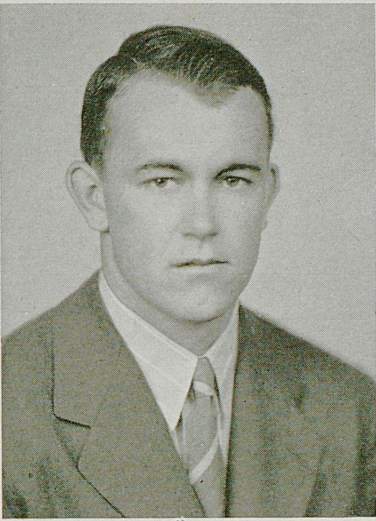


ERIC HOYER  
Halfback

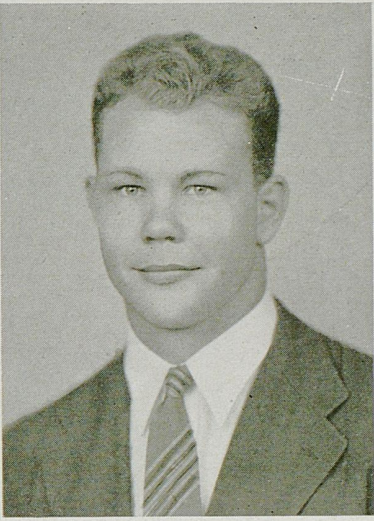
KENTUCKY



PETE TRIPLETT  
Center



HURTHEL JONES  
Guard

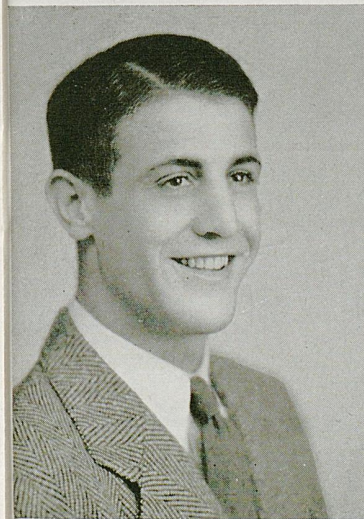


CHAS. BROWNING  
Guard

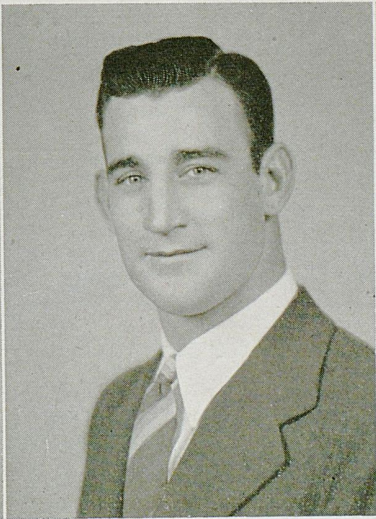


BERYL McALLISTER  
Tackle

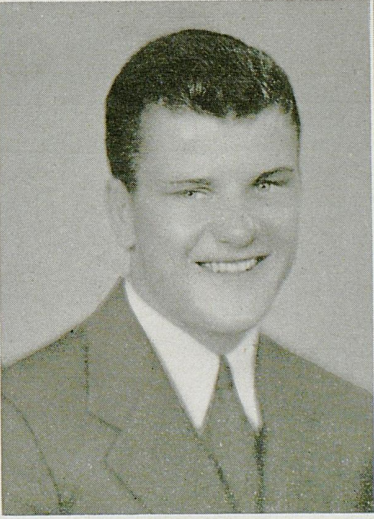
PLAYERS



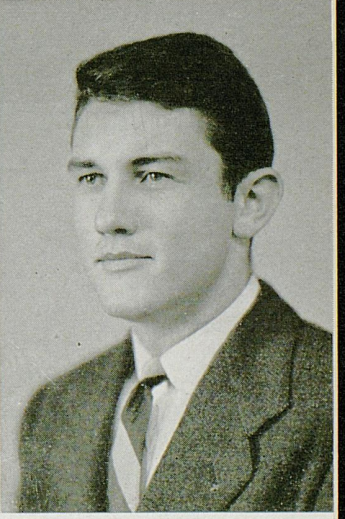
PHIL CUTCHIN  
Halfback



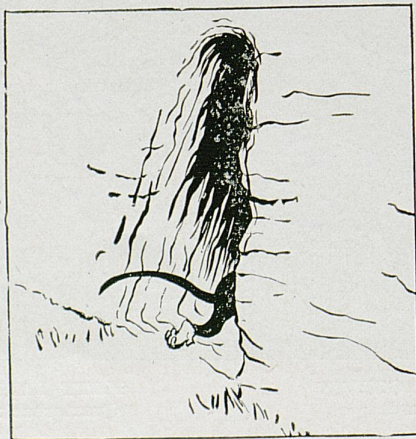
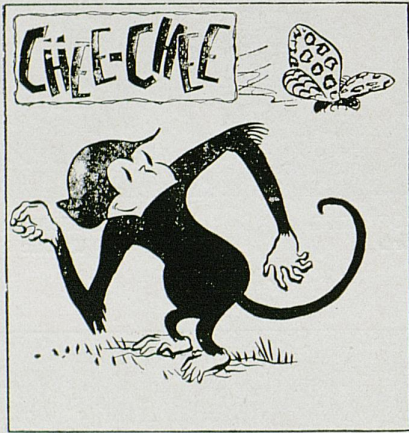
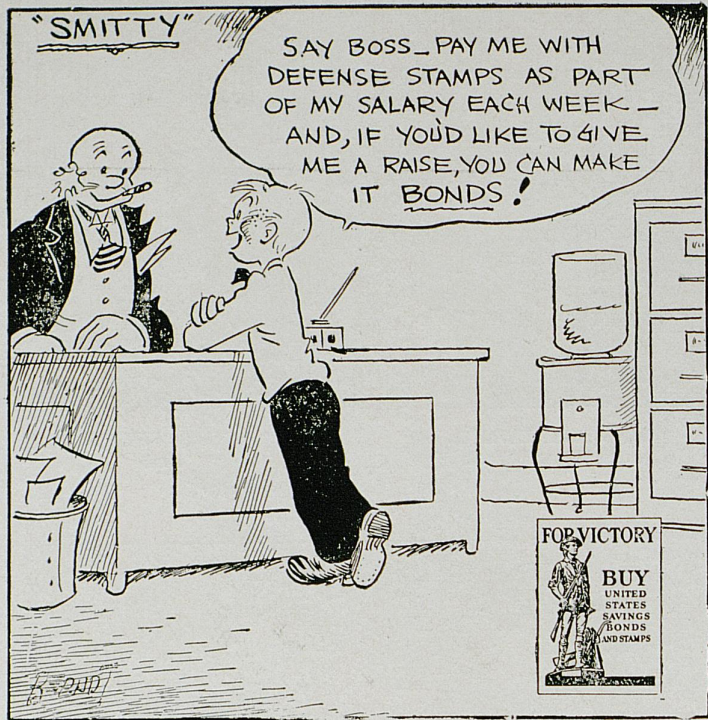
RICHARD COLVIN  
Guard



MATT LAIR  
Quarterback

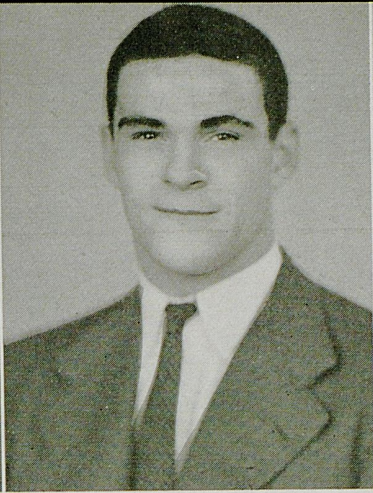


NORMAN BECK  
Guard

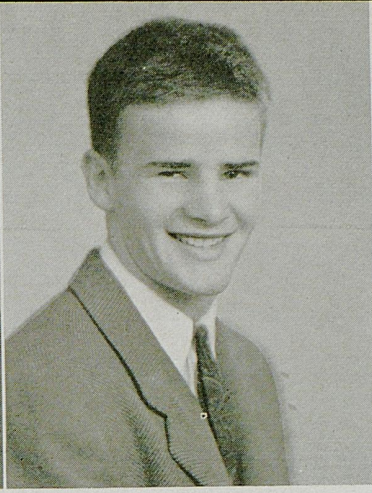




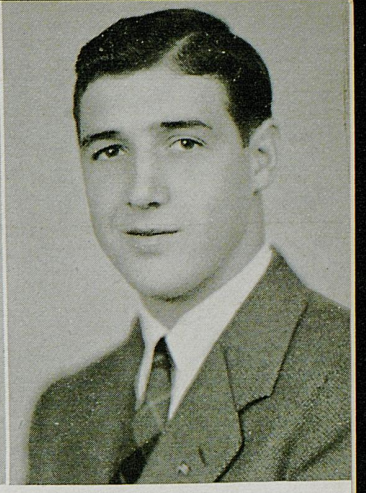
**GEORGE EDWARDS**  
End



**JAY RHODEMYRE**  
Center

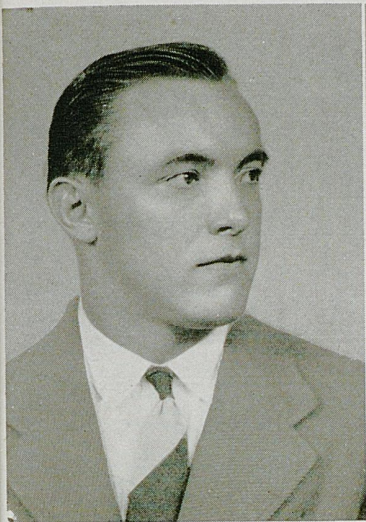


**TOMMY BELL**  
Halfback

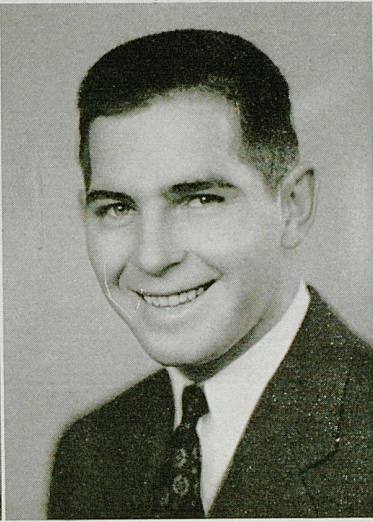


**CHARLES MINOR**  
End

**KENTUCKY**



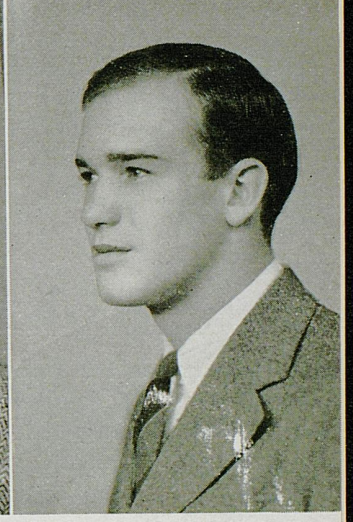
**BILL MOSELEY**  
Quarterback



**JACK CASNER**  
Guard

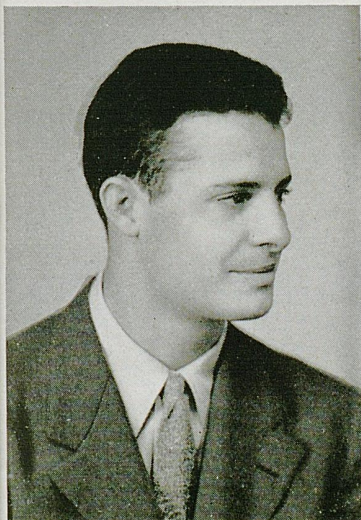


**CHAS. WALKER**  
Center

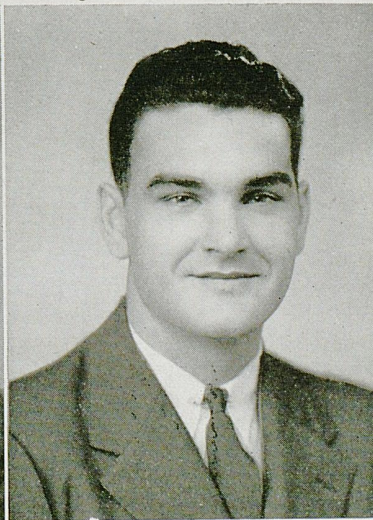


**CARL ALTHAUS**  
End

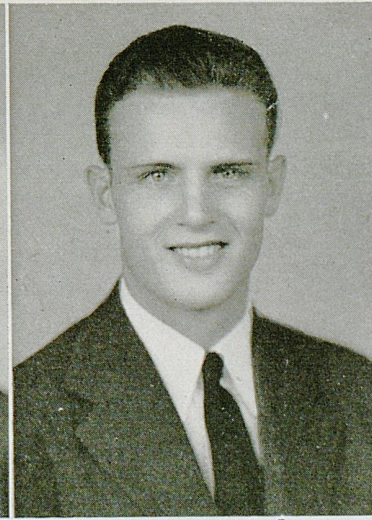
**PLAYERS**



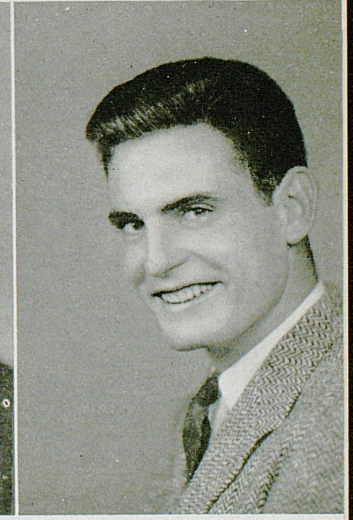
**BILL WELBORN**  
Guard



**CLYDE JOHNSON**  
Tackle



**BEN KESSINGER**  
Quarterback



**BOB HERBERT**  
Fullback

We are exclusive agents in the  
State of Kentucky for

*O'Shea*

KNITTING MILLS

WRITE FOR OUR LATEST  
108-PAGE CATALOG

O'Shea Football Equipment  
O'Shea Basketball Clothing  
O'Shea Award Sweaters

HUNT'S ATHLETIC GOODS CO.

MAYFIELD, KY.

IF YOU WANT  
QUICK STARTING,  
SPEED, POWER

USE

RED PEPPER  
BETTER ETHYL  
GASOLINE



Ashland Oil & Refining  
Company

REFINERS and DISTRIBUTORS

Elmer Rix, Local Mgr.

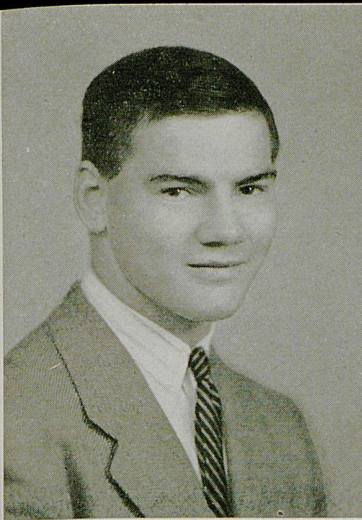
Lexington,

Kentucky

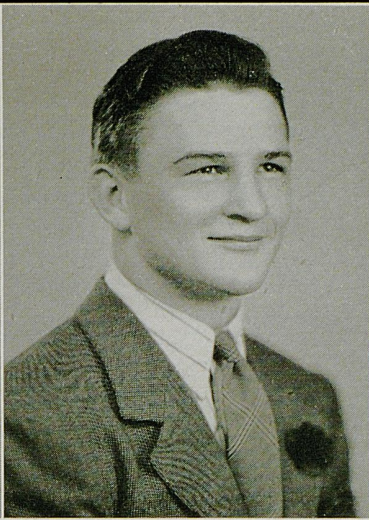
*Good Luck, Wildcats*

Campus Book Store

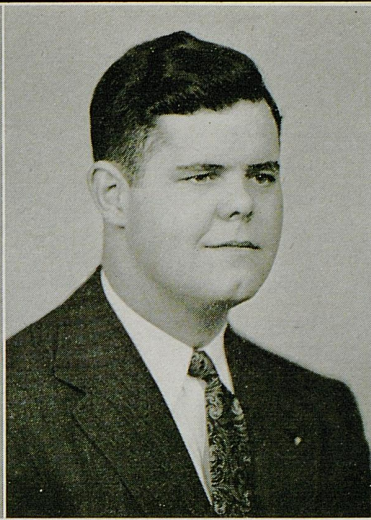




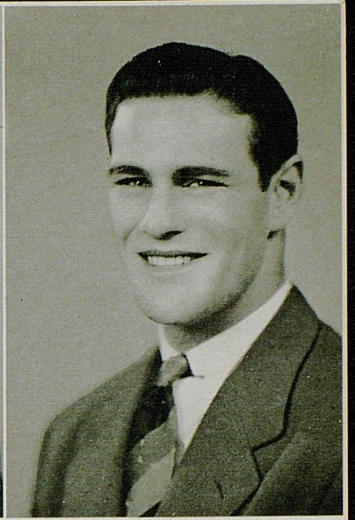
**GENE MEEKS**  
Halfback



**LEO YARUTIS**  
Guard

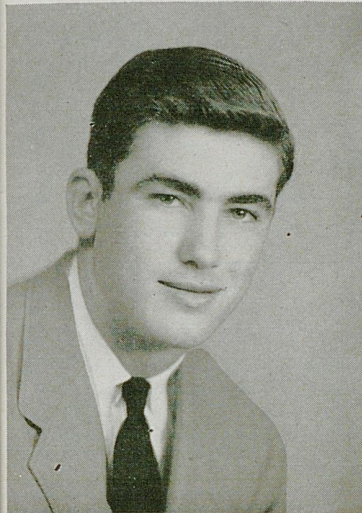


**ROBERT DRURY**  
Tackle

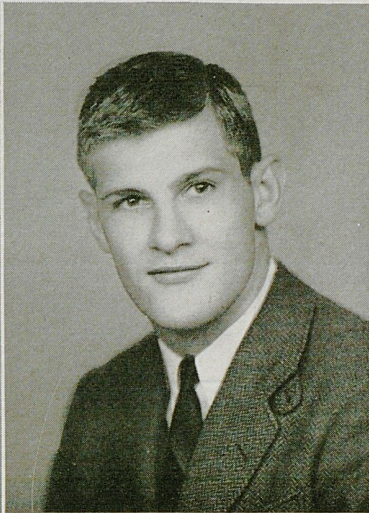


**RALPH KOHL**  
Tackle

**KENTUCKY**



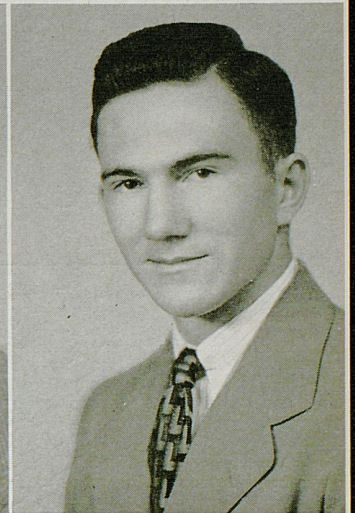
**CHAS. KUHN**  
Halfback



**ALLAN PARR**  
End

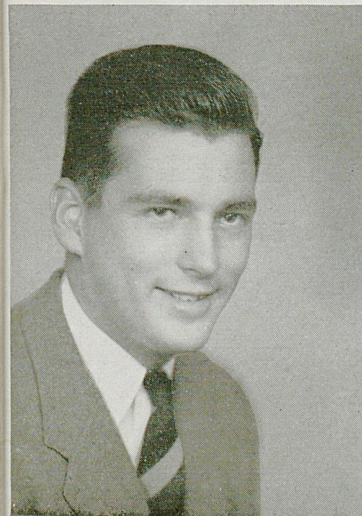


**JESSE TUNSTILL**  
Halfback

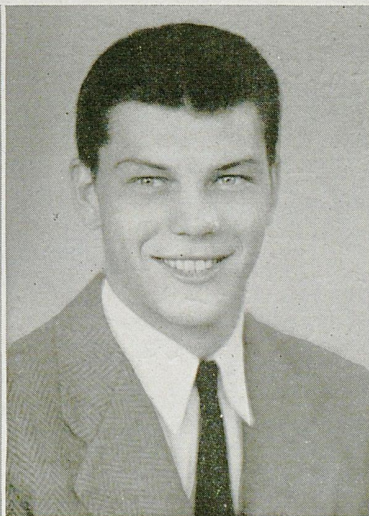


**RANDALL HAMMER**  
Quarterback

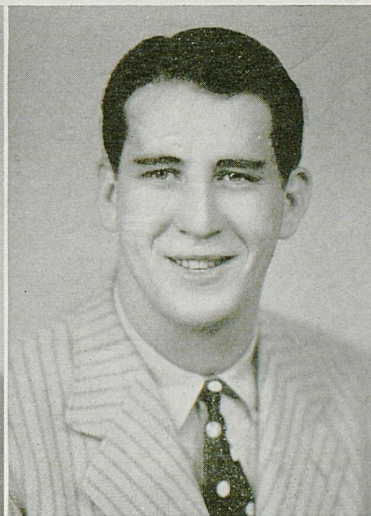
**PLAYERS**



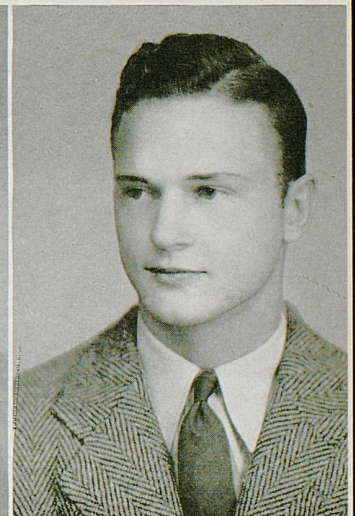
**HARRY TAYLOR**  
End



**GEORGE SENGLER**  
End



**BILL GRIFFIN**  
Tackle



**JOHN HURST**  
Fullback



"Him and his zoot suit!"



A Statue of  
Liberty play  
that has  
our approval.

# Summary of Penalties

## LOSS OF FIVE YARDS

Request for time out more than three times during half.  
Illegal delay of game.  
Failure of substitute to report.  
Illegal return or withdrawal of eligible player.  
Violation of kick-off formation.  
Position of players in scrimmage.  
Encroaching on neutral zone.  
Center, guard or tackle may not drop back.  
Player in motion less than 5 yards back.  
Player out of bounds when scrimmage begins.  
Ball not put in play by scrimmage when so specified.  
Attempts to draw opponents offside.  
Interference with opponents before ball put in play.  
Lineman running with, passing or kicking ball.  
Player taking more than two steps after fair catch.  
Player of kicking team ahead of restraining line.  
Player of receiving team ahead of restraining line.  
Illegal use of hands and arms by defensive team.  
Using flying block or flying tackle.  
Running into the kicker.  
Crawling by the runner.

## LOSS OF 15 YARDS

Violation of rules during intermission.  
Team not ready to play on scheduled time.  
Illegal return to game.  
Failure to come to stop in shift play.  
Forward pass by player of defensive team.  
Forward pass touched by ineligible player.  
Intentional incompleteness of pass.  
Interference by passing team.  
Interference with opportunity to make fair catch.  
Throwing to ground player who has made fair catch.  
Helping the runner or interlocked interference.  
Illegal use of hands and arms by offense.  
Defensive player striking opponents above shoulders with palms of hands.  
Roughing the kicker.  
Flagrant roughing of kicker (also disqualification).  
Piling up.  
Hurdling.  
Tripping, tackling runner out of bounds, etc.

Running or diving into players obviously out of play.  
Unsportsmanlike conduct by players.  
Clipping.  
Side line coaching.  
No walking on sidelines.  
Unsportsmanlike conduct by coaches, trainers.

## LOSS OF HALF DISTANCE TO GOAL LINE

Striking, kneeling, kicking (also may be disqualification).  
Foul within one-yard line.  
Foul by defensive team behind its goal.

## LOSS OF BALL

Kick out of bounds at kick-off.  
Attempt of player of kicker's team who has gone out of bounds at kick-off to recover ball.  
Failure to advance ball 10 yards in four downs.  
Interference by team which did not make pass.  
Kicking team illegally touching ball.  
Illegal use of hands or arms when ball is free.  
Batting ball toward opponents' end line or batting free ball in end zone.  
Free ball kicked or kicked at.  
Other fouls when ball is free.

## SUSPENSION

Illegal return to game (also 15 yards).  
Illegal equipment.

## DISQUALIFICATIONS

Striking, kneeling, kicking (also half-distance to goal).  
Flagrant roughing of kicker (also 15 yards).  
Flagrant unsportsmanlike conduct (also 15 yards).

## FORFEITURE OF GAME

Refusal of either team to play when ordered.  
Fouls to delay game.



## For Campus Wear This Fall

It's Graves-Cox for the best in campus wear this Fall. In spite of government restrictions our standards of style and quality are still maintained so that you may enjoy clothing that is the very best you can find. We know all the "whys and wherefores" of college men, and for this reason we are able to give you exactly what you want at the price you want to pay.



MEET YOUR FRIENDS  
AT THE

## Phoenix Hotel

LEXINGTON, KY.

Visit

Our Cocktail Lounge

### The Blue Grass Room

"We have all the ingredients  
for a good time."

Delicious meals in the  
**Coffee Shop**

A. E. (Red) Huckle, Mgr.  
Class of 1922

## ATHLETIC EQUIPMENT For Every Sport

---

WHOLESALE PRICES  
TO SCHOOLS AND COLLEGES

Write for Catalog

---

## The Sutcliffe Co.

Incorporated

LOUISVILLE, KY.

## KENTUCKY SQUAD

<i>No.</i>	<i>Name</i>	<i>Position</i>	<i>Years on Squad</i>	<i>Weight</i>	<i>Home Town</i>
36	Althaus, Carl	E	2	188	Louisville, Ky.
6	Beck, Norman	G	3	185	Louisville, Ky.
45	Bell, Tommy	B	1	150	Lexington, Ky.
22	Browning, Chas.	G	1	190	Montgomery, Ala.
38	Casner, Jack	G	3	185	Ft. Thomas, Ky.
44	Colvin, Richard	G	2	200	Bardstown, Ky.
48	Cutchin, Phil	HB	2	175	Murray, Ky.
43	Drury, Robert	T	1	230	Cleveland, Ohio
39	Eblen, Chas.	E	2	183	Ashland, Ky.
40	Edwards, George	E	1	175	Harrodsburg, Ky.
2	Ewing, Tom	QB	1	175	Catlettsburg, Ky.
42	Griffin, Bill	T	1	230	Mayfield, Ky.
34	Hammer, Randall	QB	2	175	Tompkinsville, Ky.
24	Herbert, Bob	FB	3	188	Fairmont, W. Va.
15	Hoyer, Eric	HB	2	165	Chicago, Ill.
55	Hurst, John	FB	2	180	Evansville, Ind.
8	Johnson, Clyde	T	3	230	Ashland, Ky.
28	Jones, Hurthel	G	1	200	Corbin, Ky.
37	Kafoglis, Milton	T	1	200	Lexington, Ky.
26	Kessinger, Ben	QB	1	175	Lexington, Ky.
31	Kohl, Ralph	T	1	193	Cleveland, Ohio
5	Kuhn, Chas.	HB	2	180	Louisville, Ky.
18	Lair, Matt	QB	1	175	Paris, Ky.
29	Meeks, Gene	HB	1	178	Lawrenceville, Ill.
23	Minor, Charles	E	1	185	Lexington, Ky.
53	Moseley, Bill	QB	1	175	Montgomery, Ala.
51	Parr, Allan	E	3	183	Louisville, Ky.
46	Rhodemyre, Jay	C	1	183	Ashland, Ky.
25	Sengle, George	E	1	175	Louisville, Ky.
20	Taylor, Harry	E	3	190	Cynthiana, Ky.
32	Triplett, Pete	C	1	180	Lexington, Ky.
27	Tunstill, Jesse	HB	1	190	Paducah, Ky.
41	Walker, Chas.	C	2	203	Corbin, Ky.
50	Walker, Paul	HB	1	175	Glasgow, Ky.
54	Webb, Dick	T	1	215	Lexington, Ky.
30	Welborn, Bill	G	2	175	Madisonville, Ky.
47	Wood, Clark	T	3	200	Huntington, W. Va.
33	Yarutis, Leo	G	1	183	Gary, Ind.

“The Official Watch for Timing Today’s Game is Longines — The World’s Most Honored Watch”

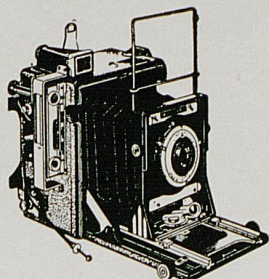
## WEST VIRGINIA SQUAD

No.	Name	Position	Years on Squad	Weight	Home Town
43	Allegrini, Emil	G	2	174	Warwood, W. Va.
20	**Barnette, Quentin	QB	3	185	Charleston, W. Va.
42	*Bell, William	HB	2	160	Parkersburg, W. Va.
50	*Benjamin, Leo	C	2	179	New Philadelphia, Ohio
52	Cassell, Guy	G	1	186	Cass, W. Va.
62	*Cimino, Vincent	G	3	190	Weirton, W. Va.
81	*Clark, Andy	E	2	179	Mt. Hope, W. Va.
60	*Corum, Gene	G	2	181	Huntington, W. Va.
76	Dattola, Louis	T	2	182	Springdale, Penna.
86	Dluznieski, Pete	T	1	196	Greenwich, Conn.
22	Dutton, Robert	QB	2	175	Morgantown, W. Va.
88	Fatt, George	E	1	170	Morgantown, W. Va.
79	Fawcett, James	HB	0	176	Belle, W. Va.
93	Feldman, Louis	T	1	201	Coscob, Conn.
32	**Gardner, William	FB	3	182	Charleston, W. Va.
41	*Helinski, Charles	HB	2	178	Benwood, W. Va.
87	Jones, Alfred	HB	0	174	Cabin Creek, W. Va.
12	Katchur, John	HB	3	169	Morgantown, W. Va.
23	Knapp, John	QB	0	190	Morgantown, W. Va.
71	*Kulakowski, Edmund	T	2	201	Kingston, Penna.
35	Leonard, Richard	HB	0	190	Morgantown, W. Va.
16	Lucas, Edwin	HB	1	179	Ellenboro, W. Va.
33	Lucente, John	HB	0	180	Clarksburg, W. Va.
40	*Martin, Allan (Ike)	HB	3	170	Elm Grove, W. Va.
11	**McElwee, Richard	HB	3	163	Marlinton, W. Va.
73	Mercular, John	T	2	201	Warwood, W. Va.
80	*Montone, Neil	E	2	192	Jersey City, N. J.
85	Morecraft, Fred	E	1	190	South Charleston, W. Va.
83	**Narick, Steven	E	3	171	Wheeling, W. Va.
82	Northrop, Richard	E	0	163	St. Marys, W. Va.
15	Palmer, Leslie	HB	1	168	Cedar Grove, W. Va.
75	Paulin, Anthony	T	2	180	Charleston, W. Va.
61	**Peelish, Victor	G	3	183	Raleigh, W. Va.
74	*Powell, Warder	T	2	206	Clarksburg, W. Va.
21	Pozega, John	C	1	181	Dehue, W. Va.
70	Pritchard, Howard	T	0	180	Mullens, W., Va.
10	Richmond, Alva	HB	0	164	Mullens, W. Va.
14	Ryan, John	HB	2	155	Wheeling, W. Va.
64	Salucci, Joseph	G	2	180	Morgantown, W. Va.
31	*Schrader, Charles	FB	2	180	Charleston, W. Va.
18	Sheets, Harloe	HB	0	159	Oak Hill, W. Va.
84	**Spelock, Chester	E	2	181	Gallagher, W. Va.
77	Stafford, Carlyle	E	0	165	Coalwood, W. Va.
68	Swain, Charles	G	0	183	Parkersburg, W. Va.
55	Thomas, Robert	C	1	197	Mt. Morris, Penna.
36	Willey, Arnett	HB	0	178	Hinton, W. Va.
69	*Williams, Virgil	G	2	190	Parkersburg, W. Va.
65	Wotring, Donald	C	0	165	Morgantown, W. Va.

\* Letter Awards

## SPEED GRAPHIC

Favorite of the Press for  
Sports and other pictures



See this outstanding camera and the many other cameras we have in our complete Camera Shop.

— EXPERT —  
**PHOTO FINISHING**

- DEVELOPING
- PRINTING
- ENLARGING

Bring your films in before 9 A.M. and get them the same day. Those in before 4 P.M. ready by noon day following.

## Tinder-Krauss-Tinder

OPTICIANS—PHOTOGRAPHIC SUPPLIES

145 North Upper St.

Phone 5080

# Compare

## YOUR BRAND WITH **OLD GOLD**

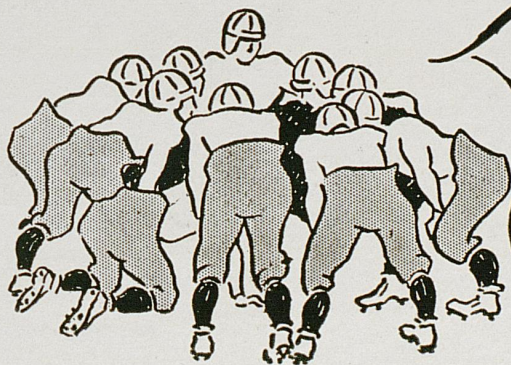
- ★ lowest in Nicotine
- ★ lowest in Irritating Tars and Resins

AS SHOWN BY READER'S DIGEST TESTS



THE smoke of Old Gold *lowest* in nicotine! Old Gold *lowest* in throat-irritating tars and resins. That's what impartial, scientific Reader's Digest tests showed. But no laboratory can show you how delightful today's Old Golds *taste!* Get New Old Golds!

P. Lorillard Company, Established 1760



The winning play after the game is to head straight for Walgreen's for a really delicious treat. Whether your appetite signals for a refreshing soda or a complete dinner, you'll find exactly what you want, skillfully prepared and properly served. At any hour of the day or evening, you'll find Walgreen's the ideal place to eat.

LET'S ALL MEET AT  
**WALGREEN'S**  
AFTER THE GAME!

### *Tempting Suggestions*

**DOUBLE DIP CHOCOLATE SUNDAE**  
*Rich, smooth, doubly-delicious!*

**DELICIOUS DINNERS**  
*A varied menu of favorite dishes!*

**TASTY SANDWICHES**  
*Every bite a real delight!*

**DELIGHTFUL LUNCHEONS**  
*A fine selection: nourishing, tasty!*

## YOU'RE ALWAYS WELCOME AT WALGREEN'S

140 WEST MAIN STREET

THEY'RE Milder  
ALL WAYS —

THEY DON'T TIRE  
MY TASTE —

**THERE'S NOTHING LIKE  
A CAMEL!**

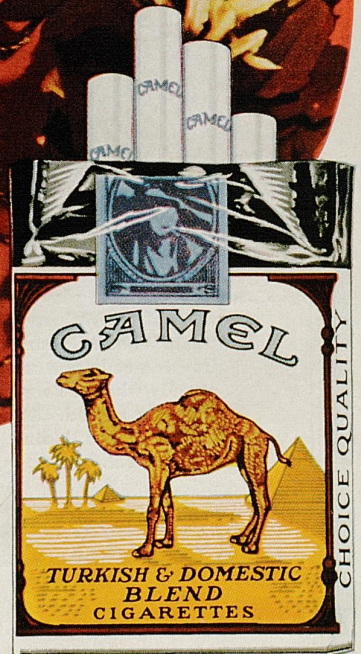
ε b



FOR  
STEADY  
PLEASURE

# Camel

*the cigarette of Costlier Tobaccos*



R. J. Reynolds Tobacco Company  
Winston-Salem, North Carolina