



JAN. 1908  
**JACKSON**  
KY.



3

2

BROADWAY

Kentucky River

RIVER

2

BRIDGE

53

51

52

HAWK

Kentucky River

1

SYCAMORE

STONE PATTON

THOMPSON HO.

3

BROADWAY

MAIN

54

11

S.P. LEES COLLEGIATE INSTITUTE

BONEY COMBS SAW MILL

LEES

AV.

JACKSON ELECTRIC LIGHT CO.

COLLEGE AV.

7

CHRISTIAN CHURCH

Scale of Feet.

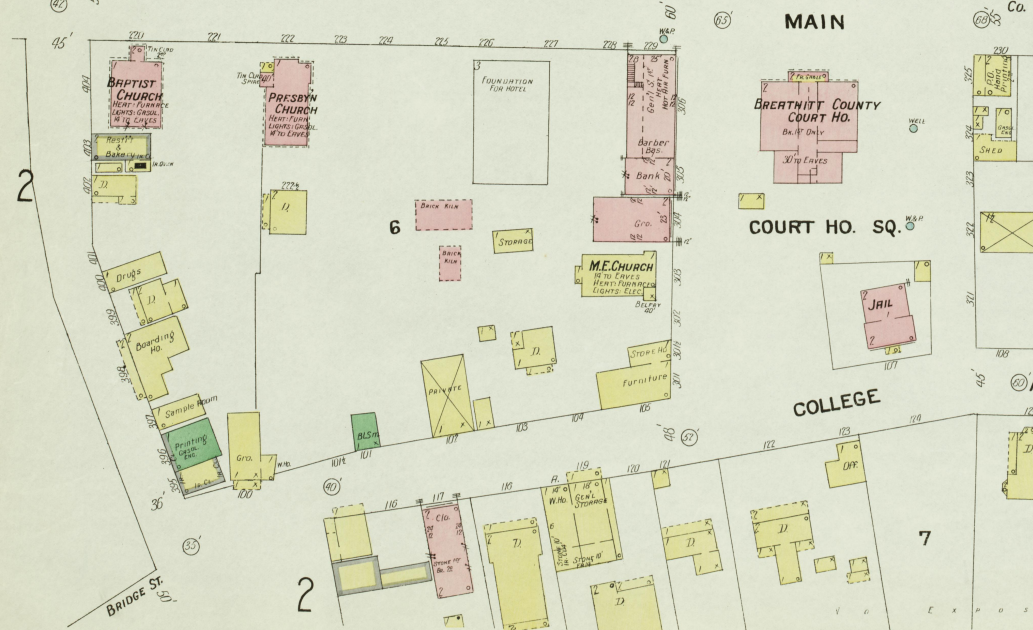
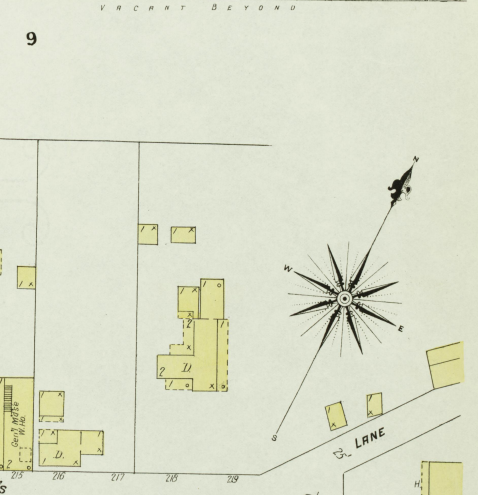
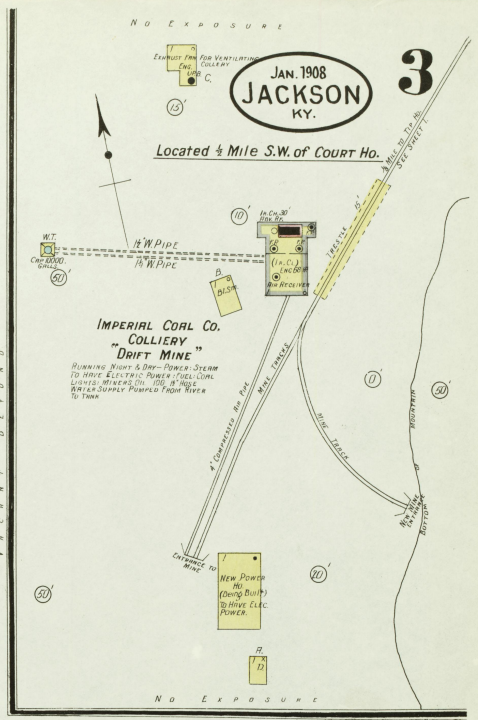
BRIDGE

3

2

COLLEGE AV.

Map 1625  
JUL 1 1908  
Library of Congress

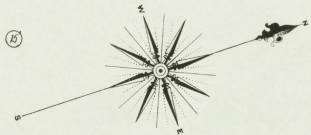
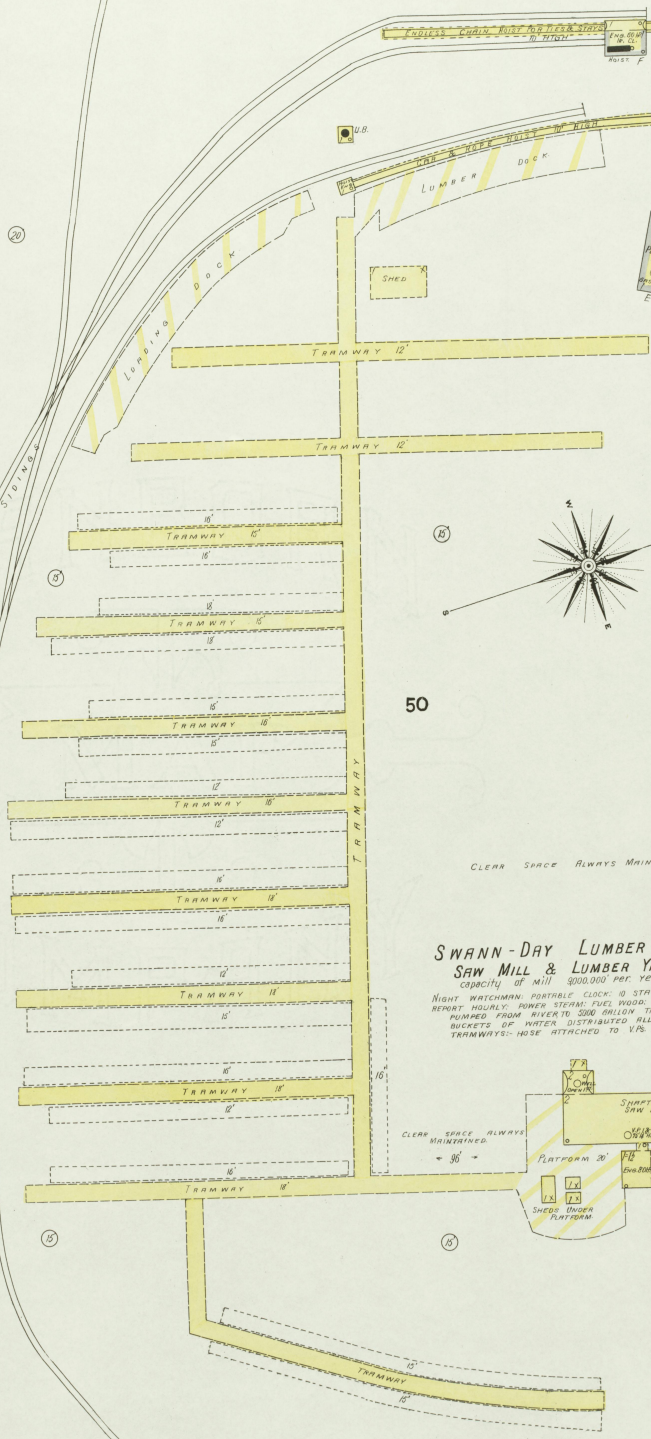
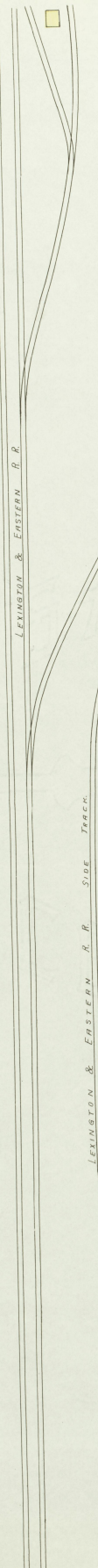


JAN. 1908  
JACKSON  
KY.

4



RAILROAD

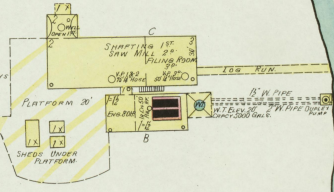


50

CLEAR SPACE ALWAYS MAINTAINED.

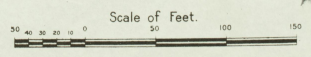
**SWANN-DAY LUMBER CO.**  
SAW MILL & LUMBER YARD.

Capacity of mill 300,000 per year.  
NIGHT WATCHMAN PORTABLE CLOCK: 10 STATIONS.  
REPORT HOURLY. POWER STEAM PUMP, WATER SUPPLY  
PUMPED FROM RIVER TO 5000 GALLON TANK. BARRELS &  
BUCKETS OF WATER DISTRIBUTED ALL OVER MILL &  
TRAMWAYS - HOSE ATTACHED TO V.P.S. AS SHOWN.



CLEAR SPACE ALWAYS MAINTAINED.

VACANT



Map Printed  
11 JUL 1905  
Library of Congress