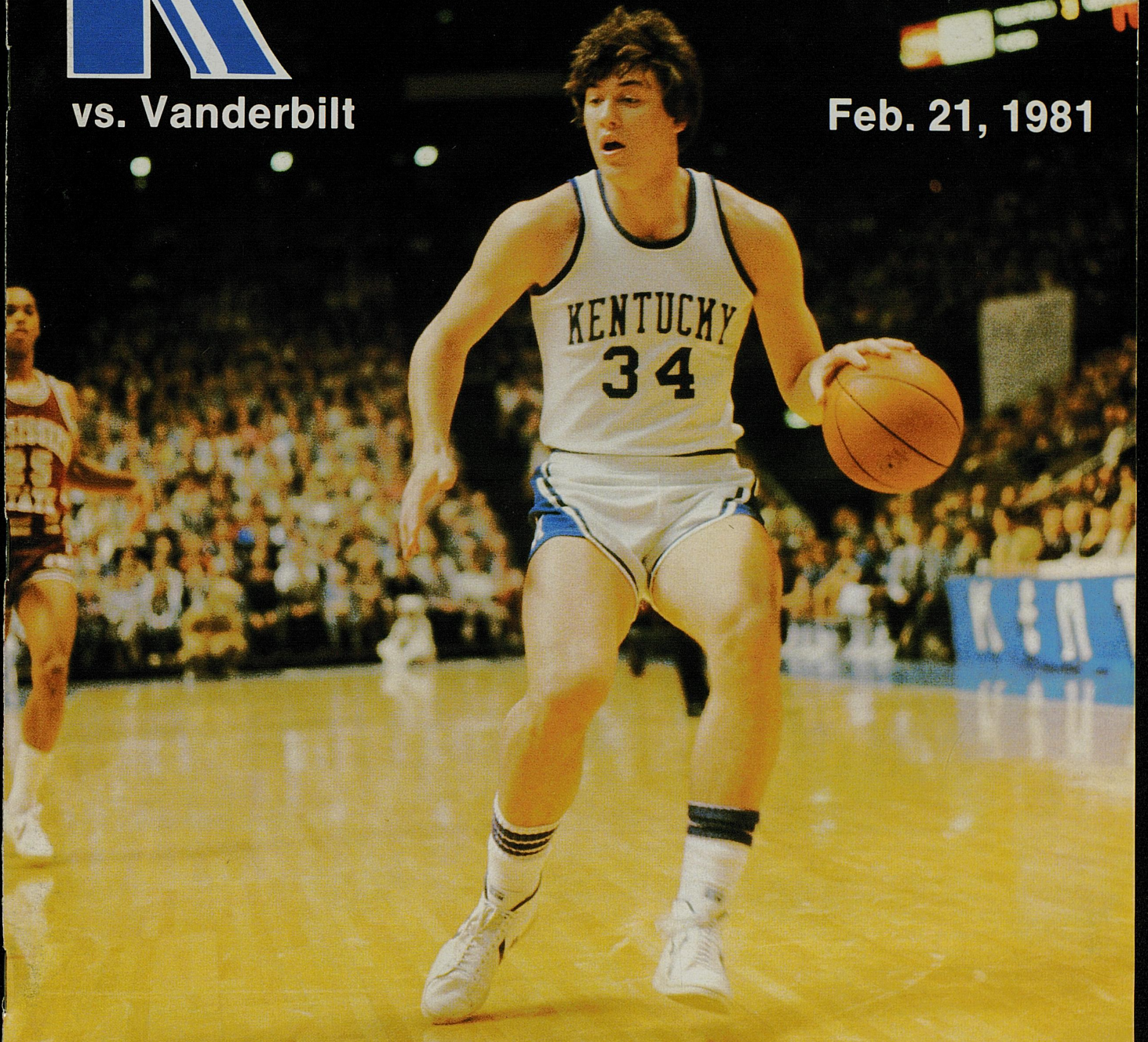


KENTUCKY

vs. Vanderbilt

Feb. 21, 1981



Souvenir Program \$1.50
Est. Price \$1.42 Tax \$.08

Vol. 2 No. BB-14

"All we have of freedom—all we use or know—
This our fathers bought for us, long and long ago."
—Rudyard Kipling



This collage by New York artist Fred Otnes was especially commissioned by Brown & Williamson for its permanent collection of fine art works.

The freedom to choose our livelihood was provided to us long ago. And it was typified by the struggle of immigrants to America in the early 1800's. People like Adam Gimbel, a humble Jewish peddler from Germany, who later founded the country's first department store. And individuals who became industrial giants, like Andrew Carnegie from Scotland, who built one of the largest steel producing businesses in the United States. America had given both of them the freedom. The freedom to choose.

A free individual does not live without choice. A free society does not prosper without it. Consider, if you will, the personal

choices we make every day without intervention from others. Now consider how many we take for granted.

The right to choose is the basis of all freedom—political, social, artistic, economic, religious—for all people. But this right must be protected from those who would chip away at it...either deliberately for personal gain, or innocently for the "betterment" of humanity. It must be protected from those who would make *their* choice, *your* choice. These personal freedoms are our legacy as well as our responsibility...to protect and to pass on to those who follow.

Freedom. It's a matter of choice.

Brown & Williamson Tobacco Corporation



Compliments of

CHUCK VERDERBER 34

1980 Long John Silver's, Inc. All rights reserved.
Long John Silver's®
SEAFOOD SHOPPES



Chuck Verderber

34

Position: Forward

Birthday: 11-3-59

Class: Junior

Hometown: Lincoln, Ill.

Height: 6'6"

Major: Pre-Dental Studies

Weight: 225

Chuck is a hard-nosed leader . . . always plays hard off the bench . . . scored 11 points vs. Alaska in Anchorage . . . had a 52.1 field

goal percentage and 73.7 free throw percentage . . . had a career high 22 points and 13 rebounds vs. Florida in 1979 . . . holds nine

Lincoln High School records . . . scored 44 points in a sectional game against Danville.

He who has no self-discipline despises himself



© 1980 Long John Silver's, Inc. All rights reserved.

Long John Silver's®
SEAFOOD SHOPPES

Go, Big Blue! We're Behind You All The Way!

**"GIVE THAT MAN
A BLUE RIBBON!"**



We're more than a Kentucky business. We're in the business of Kentucky.



We're a bank. We're an energy company. We're a mortgage company. We're a leasing corporation. In short, we're in the business of making business profitable in Kentucky.

WE'RE A BANK

We offer every commercial bank service, and we're committed to orchestrating these services to our corporate customers' financial requirements. We help them make money, move it, invest it, account for it, disperse it and conserve it.

We're also Kentucky's largest correspondent bank, the Bankers' Bank, affording every modern banking service to Kentucky through a network of nearly 400 correspondent banks.

WE'RE AN ENERGY COMPANY

One of the nation's greatest energy resources is Kentucky coal. We're the number one coal bank in America's number one coal state. We provide expert financial counsel to help mine coal profitably and in accordance with environmental regulations.

WE'RE A MORTGAGE COMPANY

We're the largest construction lender in Kentucky, providing loans for residences, income-producing

properties, government-secured developments and construction of every kind. We've financed hospitals, nursing homes, shopping centers, schools, factories, municipal buildings and motels. Ours is a complete service, from land acquisition through development to permanent financing, including mortgage servicing and property management.

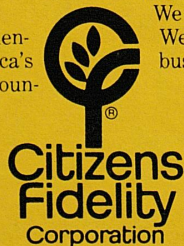
WE'RE A LEASING CORPORATION

We help Kentucky businesses expand and operate more profitably through the cash flow and tax advantages of equipment leasing. We've arranged leasing for everything from bank equipment to locomotives, and from the newest advances in medical technology to river barges.

WE'RE CITIZENS FIDELITY

We have \$1.8 billion in assets to benefit Kentucky.

We're a lot of things to a lot of people. We're in the business of Kentucky. Member FDIC.



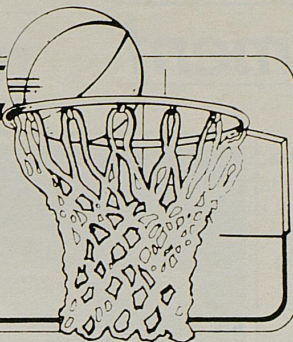
Citizens Fidelity Bank and Trust Company
Citizens Fidelity Energy Company
Citizens Fidelity Mortgage Company
Citizens Fidelity Leasing Corporation

Louisville, Kentucky 40296



TODAY, YOU NEED A GREAT FINANCIAL INSTITUTION BEHIND YOU.™

WILDCAT TIPOFF



State Government	4
University Administration	5
Athletic Department	6
Wildcat Coach	7
Coaching Staff	8
Player Feature	12
Feature of the Month	13
Around Campus	16
UK Schedule	18
Wildcat Team Portrait and Roster	19
Scorecard	28, 29
Opponent	40
UK Statistics	42
Faces in the Crowd	46
Lady Kats	47
Cheerleaders	48
Wildcat Record Book	50
NCAA Records	52
UK Sports Information	54
Arena Information	56

Wildcat Tipoff

Editor.....Barry Bronson
 Editorial Assistant.....Thomas K. Shropshire
 Editorial Consultant.....Russell Rice
 Photography.....Alen Malott
 Ad Sales.....Kenneth R. Adams, Jenny Eubanks
 Printing.....Thoroughbred Press, Lexington, Ky.

Wildcat Tipoff is the official Lexington Center program for University of Kentucky basketball and is published by Lexington Productions, Inc., 120 Kentucky Ave., Lexington, KY, 40502, Kenneth R. Adams, General Manager. Telephone 233-3533.

TAXI

308
S. BDWY.

24 HOUR
SERVICE

233-4811

Holiday

CAB CO.

UNIFORMED, COURTEOUS DRIVERS
ALL CABS AIR CONDITIONED & METERED

"FOR PEOPLE GOING PLACES"

dawahares



IZOD

Wildcat Sweaters

Vee-neck and Cardigan link sweaters made exclusively for Dawahare's from IZOD®. Each style features the embroidered Wildcat. Made of 100% orlon acrylic. Available in marine blue or white. Sizes small thru extra large. Also available is the IZOD short sleeve Knit Shirt with embroidered Wildcat. Sizes small thru extra large.

CARDIGAN & VEE-NECK — \$30

KNIT SHIRT — \$26

Gardenside — Fayette Mall
and Lexington Mall

State Government

The Honorable
John Y. Brown, Jr.
Governor of Kentucky

John Y. Brown, Jr., became the 51st governor of Kentucky on December 11, 1979. He succeeded incumbent Julian Carroll after defeating Republican candidate Louie B. Nunn.

Born on December 28, 1933, Governor Brown graduated from Lafayette High School in his hometown, Lexington, and obtained a Bachelor of Arts degree from the University of Kentucky in 1957. He graduated from the UK College of Law three years later.

The Governor served in the U. S. Army Reserve from 1959 to 1965.

He has been named the Outstanding Young Man of America by the National Junior Chamber of Commerce (1965), as one of the outstanding Civic Leaders of America (1967) and Louisville's Out-



standing Young Man by the same group. Lions Club International gave him an Outstanding American Award (1974) and he is the youngest person to be named to the University of Kentucky's Hall of Fame. He has three children by a pre-

vious marriage, John Y. Brown, III (17), Eleanor (15) and Sandra (14). He married Phyllis George on March 17, 1979 and they recently added a fourth child to the family, Lincoln Tyler George Brown, born in June, 1980.

classic & traditional clothing



A collection of some of the finest labels in men's and women's clothing; Graham & Gunn, Walter-Morton, Southwick, Norman-Hilton, Kingsridge and Corbin.

Visit us soon for Traditional clothing for men, women and boys.



*Leonard Cox
& Lexington*

Park Free While Shopping Leonard Cox Downtown
(606) 252-3583 • Downtown • Lansdowne

Administration



DR. OTIS A. SINGLETARY

President, University of Kentucky

The University of Kentucky has become one of the major institutions of higher learning in the United States under the leadership of Dr. Otis Singletary, the eighth president of the University.

Dr. Singletary was named president of the University in August, 1969. He had previously served as executive vice-chancellor for academic affairs in the University of Texas System and director of the Job Corps program for the Office of Economic Opportunity.

Dr. Singletary, a native of Gulfport, Miss., holds degrees from Millsaps College and Louisiana State University.

As president of the principal institution of higher learning in the Commonwealth, Dr. Singletary is greatly concerned with the University's role as a land-grant institution, a "people's university" accessible to all who can profit from education.

In the nine years he has been

president, the University has grown to where there are now more than 22,000 students on the Lexington campus and more than 17,000 students in UK's 13 community colleges. The University has also become one of the major research institutions in the country.

Recognition of his service to the University was evidenced by the UK Alumni Association, which presented to Dr. Singletary its Alumni Service Award — an honor rarely bestowed upon a non-alumnus of the University.

Dr. Singletary is the author of two books and several monographs.

A Navy veteran of World War II and the Korean Conflict, he is a commander in the U. S. Naval Reserve. He and Mrs. Singletary, the former Gloria Walton, have three children: Bonnie, Scot and Kendall.

The Singletarys live at Maxwell Place, traditional home of UK presidents.

Athletics Director

Expansion of the football training room and addition of a beautiful player's lounge at Shively Sports Center, new carpeting in the stadium football offices, a new basketball office complex in Memorial Coliseum, rearrangement of the baseball fences and a new surface for the running track are just a few of the recent improvements that signify the continuing progress of UK athletics since Cliff Hagan joined the Wildcat Staff eight years ago.

Recognized nationally as a progressive, business-oriented and promotion-minded administrator, Hagan has seen and overseen vast improvements in all phases of an ever-expanding operation that has encompassed 16 sports since the men's and women's programs were merged in July, 1978.

The merger, under Hagan's direction, has been orderly, with office space remodeled, and in some

cases created, to make room for the women's coaching and administrative staff.

The introduction of Hagan into the UK athletics administrative structure came in 1972, when he was named assistant to Harry C. Lancaster and given the task of implementing the Blue & White Fund for 57,600-seat Commonwealth Stadium and later for Rupp Arena. The fruits of his labors in this area have provided the additional financial support that has elevated the UK athletics program into a first class operation.

Hagan was named Athletics Director in July 1975 following Lancaster's retirement.

Hagan has also been an advocate of a strong scholar-athlete program, feeling "a genuine commitment to provide all the academic support and encouragement we can to help our athletes leave our campus with a college educa-



CLIFFORD O. HAGAN

Director

tion and a degree."

On the personal side, Hagan received one of his highest individual honors in 1978 when he became the first University of Kentucky basketball player to be installed in the Naismith Memorial National Basketball Hall of Fame in Springfield, Mass.

He is married to the former Martha Milton of Owensboro. They have four children: Lisa, Laurie, Amy and Kip.

Athletics Department

Larry is entering his fifth year as Assistant Director of Athletics for Finance. Ivy, who came to the University of Kentucky as director of housing in 1969, is involved primarily with the administration and management of the business operations, and helps to develop and initiate policies for accounting procedures and related financial management.

A native of Alabama, Ivy graduated in 1961 from Huntsville High School, where he lettered in four sports. He is a 1967 graduate of the University of Alabama and earned his MBA from Alabama in 1968.

He is married to the former Barbara Foster of Huntsville. They have one daughter, Kim, 10.

Ivy is a son of Mr. and Mrs. Jack F. Ivy of Huntsville.

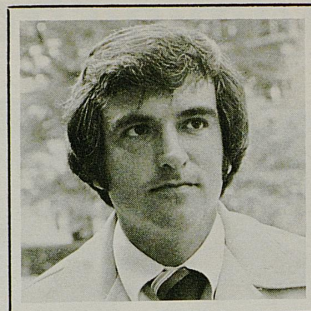
Frank Ham became assistant director of athletics soon after Cliff Hagan succeeded Harry C. Lancaster as director of athletics.

A native of Scranton, PA, Ham came to the University in 1969 as administrative assistant to football coach John Ray, and was reassigned to the athletic director's staff in 1972.

Ham graduated from high school at Niles, Michigan and completed his undergraduate work at Olivet College. He did graduate work at Indiana University and coached high school football and track at John Adams High in South Bend. He then returned to Olivet as athletic director and head football and basketball coach.

In 1962, he became assistant to the president at Olivet, with responsibilities in public and alumni relations. He was in private business from 1956 until 1968.

(continued on page 55)



LARRY IVY
Assistant Director of
Athletics for Finance



FRANK HAM
Assistant Director of Athletics



RUSS DUNN
REALTOR
278-9384

WE'RE
DUNN SOLD
ON THE
CATS

RUSS DUNN
REALTOR, INC.

Wildcat Coach

JOE B. HALL
Basketball Coach

Joe B. Hall begins his ninth season as head coach of the Kentucky Wildcats with eight returning lettermen, including three starters, and another banner recruiting class.

For the second consecutive season, the Kentucky freshmen have been tabbed the top group in the country. Last season, Hall led a youth-dominated squad to a 29-6 record and to three championships. The 1979-80 Wildcats won the Southeastern Conference title for the fifth consecutive year and claimed tournament championships in the UKIT and the Great Alaskan Shootout.

While leading the Wildcats to a 29-6 record last year, Hall upped his eight-year UK record to 183-60 (75.3%), an average of 22.9 wins per season, to keep ahead of the pace set by his former coach, Adolph Rupp, who averaged 21.5 victories a season over a 41-season span to become the winningest collegiate basketball coach of all time.

Hall has won such honors as Kellogg's 1978 National "Coach of the Year," three Southeastern Conference "Coach of the Year" awards (1973, '75, and '78) in seven years, and nomination for Kodak's 1975, '76, and '78 (finalist) "Coach of the Year" awards.

In 1978 when Kentucky won its fifth NCAA title, Hall was also presented the Rupp Cup (presented to the SEC Coach of the Year by the Birmingham Tipoff Club) and Hall's most coveted personal award, the Dr. James Naismith "Peachbasket" award, which previously had been awarded to UCLA's John Wooden, Oklahoma State's Hank Iba, Kentucky's Adolph Rupp, and the Boston Celtics' Red Auerbach.

Entering this season, Hall's 14 year career coaching record stands at 259-116, (excluding a 17-2 record on a 1974 Australian tour, a 7-0 record on a 1978 Japan tour, and six pre-season exhibition wins against foreign and domestic teams) and that record was compiled against nationally ranked non-conference teams and teams in a conference that fast is becoming recognized as among the toughest in the nation. Broken down, it



shows a 57-50 five-year mark at Regis, a 19-6 record at Central Missouri, and a 183-60 record at UK.

Hall began his tour as UK head coach in rather auspicious fashion, becoming in 1973 the first rookie coach in the SEC to be designated Coach of the Year by his fellow coaches and by Coach and Athlete Magazine.

Gathering such honors has been one of Hall's trademarks during a coaching career that began at Shepherdsville (Ky.) High School in 1956 and continued through Regis

College and Central Missouri State College before he returned to UK July 1, 1965, as an assistant to his former coach, Adolph Rupp.

A three-letter winner and team captain in both sports in high school at Cynthiana, Ky., he played freshman basketball and one year of varsity basketball in the "Fabulous Five" era at the University before transferring to the University of the South at Sewanee, Tenn., where he set a school single game scoring record and was team captain. Coach Lon Varnell, upon retirement, rated Hall as No. 1 of the three best players he ever coached.

After touring Europe with the Globetrotters in 1951, Hall returned to U.K. in 1955 to complete requirements for his B.A. and later (1964) received his M.A. at Colorado State.

Perhaps the best appraisal of the job Hall has been doing at the University came from Rupp, who died in 1977. "A good coach," Rupp said, "is a person who can take good material and win with it. Joe has done that."

He is married to the former Katharine Dennis of Harrison County, Ky. They have three children—Mrs. Rick Derrickson and Steve of Lexington, and Mrs. Mike Summers of Greenville, S. C.

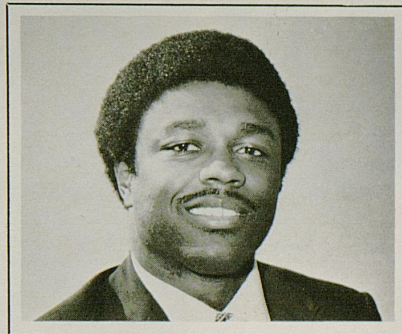
LEONARD HAMILTON
Associate Coach

Leonard Hamilton was named the University's first associate basketball coach on Oct. 15.

Hamilton has been a Wildcat assistant coach for six years. He came to Kentucky after spending three years as an assistant coach at Austin Peay.

He has always been noted as an outstanding recruiter and as a defensive specialist. Most remarkable in his coaching career is the fact that in eight of his nine years on the college scene, the team he has been associated with has advanced to post-season play. Only in his first season at Austin Peay has Hamilton not been involved in a post-season tournament.

A native of Gastonia, N.C., Hamilton lettered three years in football and twice in basketball as a prep-



ster. He captained his team for two seasons at Gastonia Community College in Dallas, N.C. He also captained his team at Tennessee-Martin, where he graduated in 1970.

The 32 year old Hamilton is married to the former Claudette Hale of McLemoresville, Tenn. They have a son, Lenny, 10.

Coaches

JOE DEAN

Assistant Coach

A vital and vibrant member of the Wildcat coaching staff, Joe Dean enters his fourth year at Kentucky.

A native of Baton Rouge, La., he attended Baton Rouge High School where he earned letters in basketball and football.

Dean got an early taste of Kentucky basketball when he played against the Wildcats three years for Mississippi State University. After graduating from State in 1976, he served one year as Bulldog graduate assistant while earning a masters degree in physical education. Outstanding in academics, he was named to the 1976 Academic All-SEC second team.

Putting Dean's youthful enthusiasm to full use, coach Hall has appointed the young coach director of the annual Wildcat Coaching Clinic and the popular Wildcat Summer Basketball Summer Camp in addition to regular duties.

He is married to the former Ellen Elizabeth Anger of Jackson, Mississippi. They have a son, Scott, 1.



The Wildcats are fortunate to have the services of volunteer coach Harry Lancaster and part-time assistant coach Bob Chambers this season.

Both bring to Coach Joe Hall's program many years of basketball experience working with young players.

LANCASTER



Harry Lancaster, former athletics director and assistant basketball coach at the University of Kentucky, came to Kentucky in 1946 and served as an assistant coach under the legendary Adolph Rupp until 1968. In 1968, he was named acting athletics director of Kentucky, and in 1969, he was named athletics director.

CHAMBERS



Bob Chambers has 20 years of high school coaching experience, 13 as a head coach. His overall record is 317-116. For nine years prior to 1979-80, he coached at Tennessee High in Bristol and fashioned a 228-68 mark and made three trips to the state play-offs. Last season, eight of his former players, including Kentucky's Derrick Hord, played college basketball.

RAMADA INN

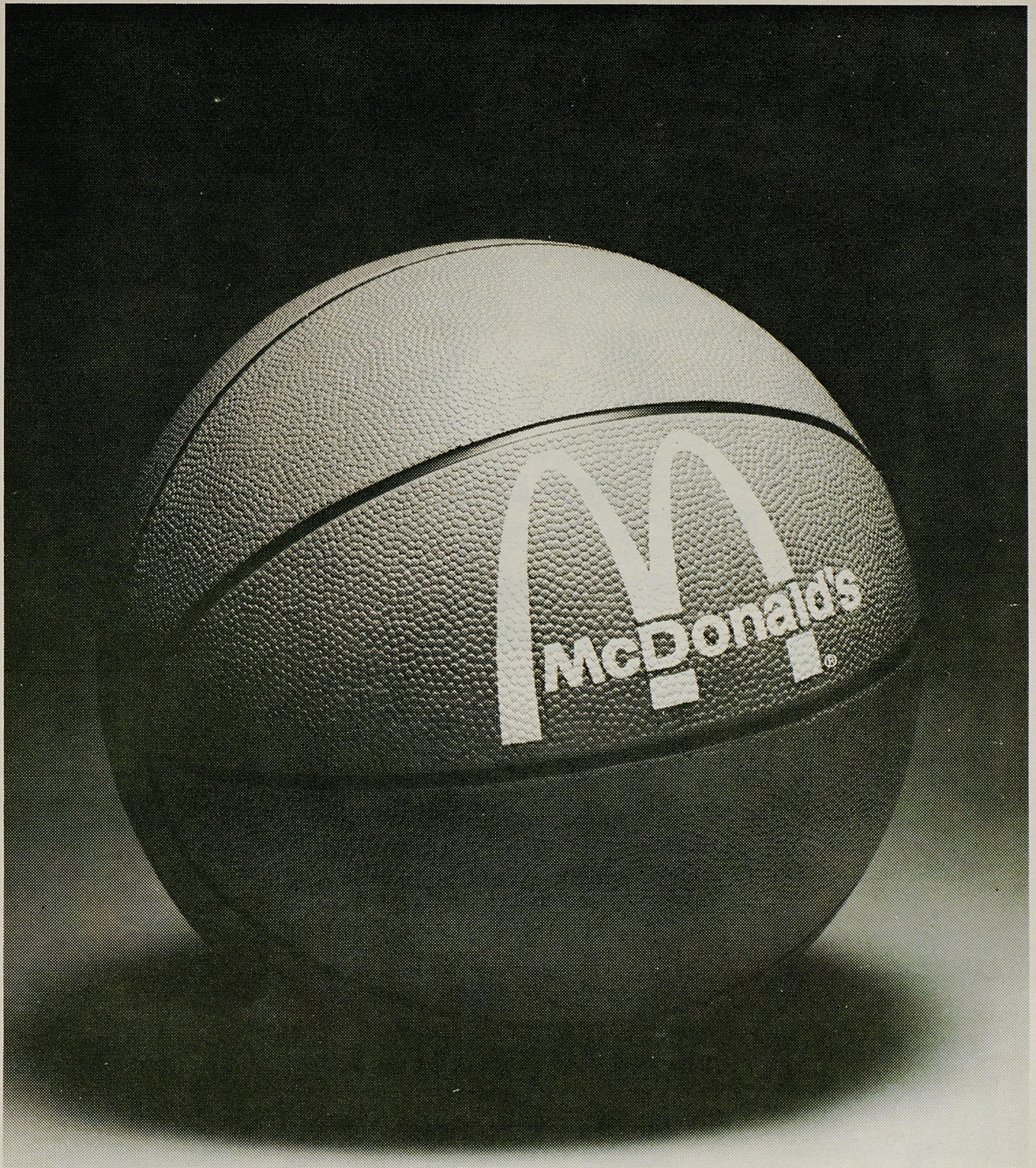
WILDCAT WEEKEND

Join us at the **REFURBISHED RAMADA IMPERIAL**,
Waller Ave., for a great **WILDCAT WEEKEND**.
(Within walking distance of Commonwealth Stadium)

- Saturday Dinner
- Sunday Breakfast
- Room (one night)

\$70⁰⁰ per couple

606-254-1177
Ramada Inn, 525 Waller Ave., Lexington, Ky. 40504



Game plan.

Success in basketball requires plenty of training, good coaching and team play. And it requires a game plan.

At McDonald's, our game plan is simple. We have the team to produce winners every season.

Winners like Quarter Pounder,[™] Big Mac,[™] Golden French Fries, and Triple Thick Shakes.

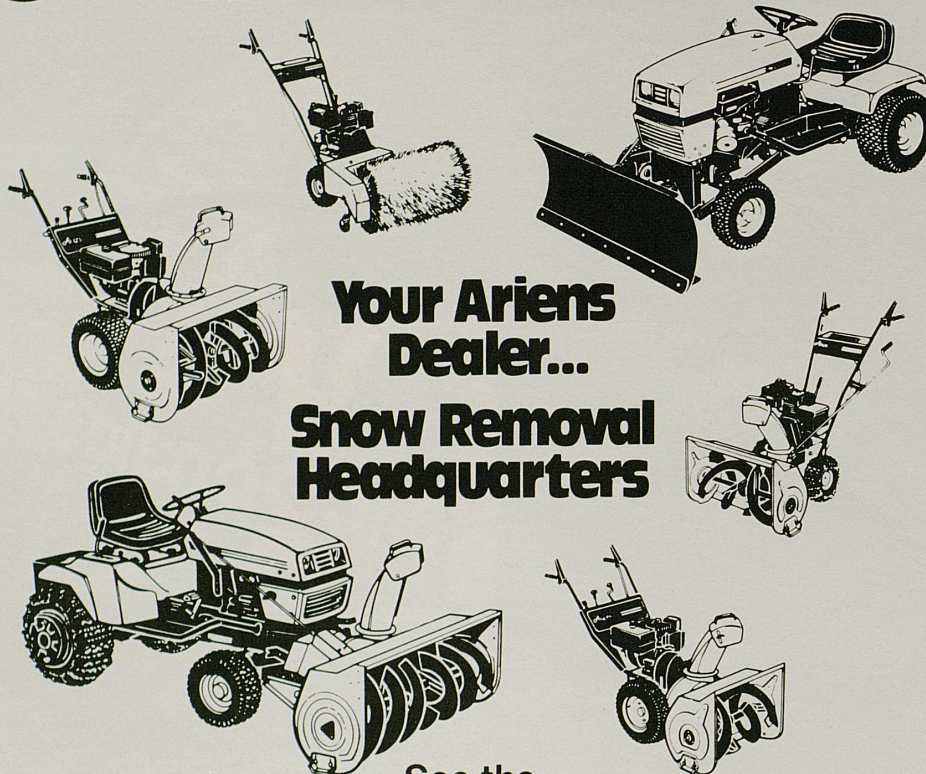
And our game plan includes careful handling. We never drop the ball when it comes to service. Prompt and courteous—whether you're home team or visitor.

So, before or after the next battle on the hardwood, include McDonald's in your game plan.

Nobody can do it like McDonald's can.[™]



Ariens



**Your Ariens
Dealer...
Snow Removal
Headquarters**

See the
full line of
Ariens Sno-Thros, Tractors, and
versatile attachments today!
Your Ariens Dealer
is headquarters for high performance
snow removal equipment.
Nobody does it better, in so many ways,
than Ariens!

CENTRAL EQUIPMENT CO.

Specialists in Mowing & Lawn Maintenance Equipment
855 Angliana Avenue Lexington, Kentucky Phone 253-2611

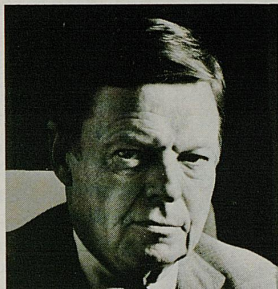
The security they offer is better than a slam dunk.

The security your New York Life Agent offers is as basic as life itself—the realization of your personal goals. Your family's financial security. Protection against the high cost of illness. A more comfortable retirement.

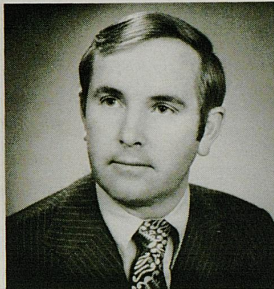
These are some of the New York Life Agents in

this area who devote their careers to helping people achieve solid financial security. They have the experience and knowledge to design a life insurance program to meet your family's needs.

For their special kind of security, call today.



Joseph Argabrite
Lexington



Larry Botts, C.L.U.
Lexington



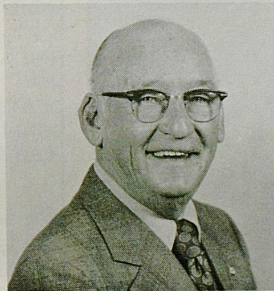
Thomas Brough, C.L.U.
Lexington



Gene Cravens, C.L.U.
Lexington



Mike Fawbush
London



Chalmer Lindon
Hazard



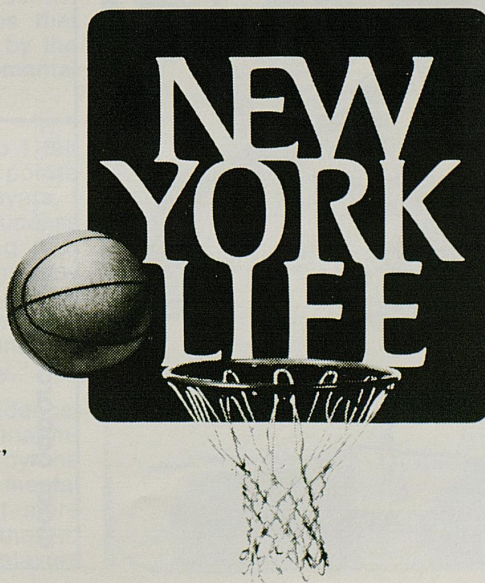
Bill Lyle
Paris



Tom Massengill
Middlesboro



George Ridings, C.L.U.
Richmond



Larry True
Grant County

Peter B. Crane, General
Manager 200 West Vine, 6A,
Lexington, 254-2341

New York Life.
For all of your life.

Verderber: A Leader Returns

There are many reasons for Kentucky's recent rash of fine playing. Many Wildcat fans will point to Sam Bowie's consistent scoring and defensive intimidation. Others will tell you Dirk Minniefield has been tremendous as the iron man, the floor leader who can beat you with the pass or the shot.

But there is another big reason for the team's latest streak and that reason is No. 34, Chuck Verderber. After sitting out more than a month following an emergency appendectomy, Chuck has worked himself back into shape and back into the starting lineup.

"You just can't imagine what having Chuck Verderber back has meant for us," Coach Joe B. Hall said after the Alabama game.

Verderber's quick return surprised many observers. Although he still gets winded and admits his legs seem a bit heavier, Chuck is able to give 100 percent when he's in the game.

"Well, it's getting better," Verderber was saying just after the Cats had beaten the Crimson Tide by fifteen points Saturday night. "I can go a lot longer than I thought I could."

"When I first came back I couldn't really play hard in the second half. Now, I am playing 20 to 22 minutes a game. I just have to play myself into shape. Practice just isn't enough. It helps, but it's just not enough."

And when does Verderber think he might be back as a 40-minute man?

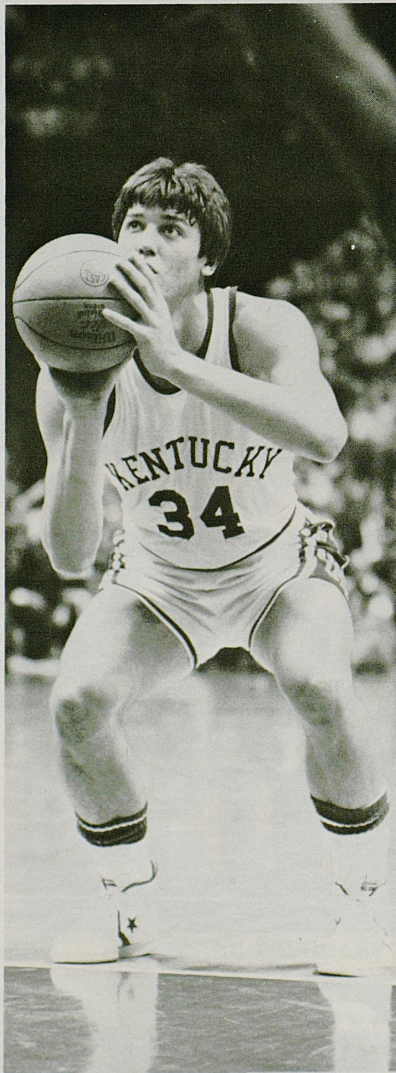
"I don't know if I'll get back in for 40 minutes a game by the end of the season. I'm trying my hardest. I'm just going to continue to try for 20-25 minutes a game and maybe by the end of the season I'll get to 30 minutes. It's hard, I just lost my conditioning. I just go in, rest, go back in, and just play as hard and as much as I can."

Next to Fred Cowan, Verderber is the elder statesman of the regular players and he's qualified to comment on the emerging personality of this young—but—rapidly maturing team.

"Enthusiasm is the big thing, in

the sense that it's not a youthful enthusiasm. It is an enthusiasm generated as each play goes on and a big play comes up so we just play better defense. That's the type of enthusiasm we have. Youthful enthusiasm is where on a young ball club guys can make up for their mistakes by hustle, diving for loose balls.

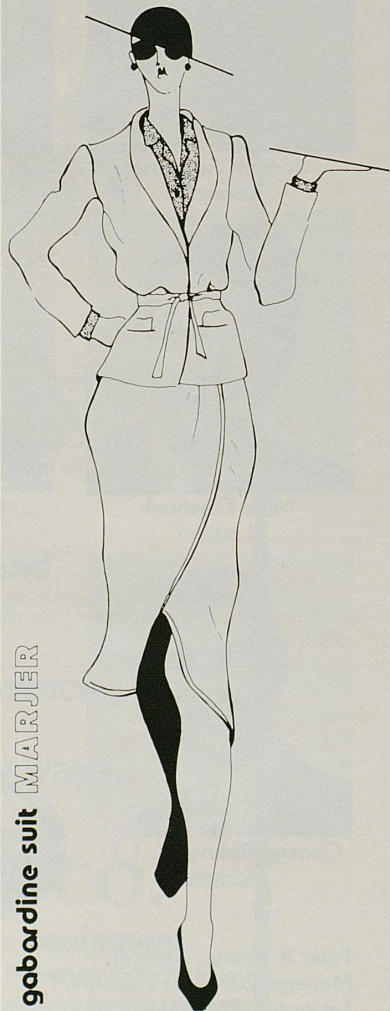
"Now we've changed that. We still have that kind of enthusiasm but we have a different type of enthusiasm that can carry us for the rest of the season."



collage

153 PATCHEN DRIVE PATCHEN VILLAGE
269-2614

- Albert Nipon
- Nipon Collectibles
- Nipon boutique
- Albert Capraro
- Les Mouches
- Serge Nancel - Paris
- J. G. Hook
- Cargo



wool gabardine suit MARGHERITA

The Coach and the Program: Conditioning Program Pays Big Dividends

You've heard the comments — and sometimes the accusations. The Kentucky Wildcats are so physical they should be playing in the NBA, it is often said.

This, of course, was more true when Coach Joe B. Hall had such brawny lads as Mike Phillips, Rick Robey and James Lee mixing it up underneath and powering the ball in the basket. And winning the National Championship.

This year's edition of the Wildcats aren't quite as physical as the 1978 bunch. But that doesn't mean each of them isn't capable of coming out on top in a physical match-up. Some observers have even claimed that Coach Hall and the Kentucky strength program have revolutionized the game of college basketball.

Coach Hall might not consider himself a revolutionary. But he's been combining basketball and strength programs since 1956 when he began a running and weight lifting program designed specifically for basketball at Shepherdsville High School.

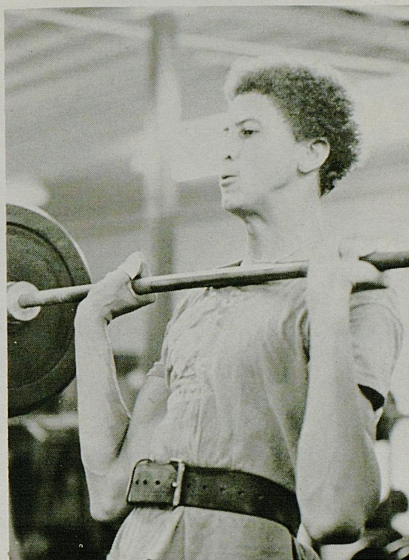
"I lifted weights as a high school player at Cynthiana and as a college player at Kentucky," explained Hall. "It helped my stamina, leg

With strength comes confidence. And with confidence comes that intangible that is evidenced by the best teams in any sport—mental toughness.

strength and confidence, so I felt that as a coach I would incorporate it into a program for my players. I have experienced some success with the weight and running program and I have added some new things each year — some on my own and some upon the consultation of our weight lifting (and UK track) coach, Pat Etcheberry."

With strength comes confidence. And with confidence comes that intangible that is evidenced by the best teams in any sport — mental toughness. Nowhere is that more important, perhaps, than in the pro game and former Kentucky players

in the NBA feel the Kentucky conditioning program has helped them tremendously.



"The running program definitely contributed to my successful career at Kentucky and to my being in the NBA," said Robey, now a mainstay with the Boston Celtics. "When I first reported at Kentucky, I weighed around 260. Over a four-year period of running and weight lifting, I trimmed down to 218, increased my vertical jump, improv-

Rick Robey went from 260 to 218 and increased his vertical jump, while improving his lateral movement and speed.

ed my lateral movement and speed.

"Going through the program gave me the ability to rebound in a crowd, play aggressive defense for longer periods of time and enabled me to score inside while being bumped or pushed," added Robey.

The conditioning program is de-



EASTLAND SHOPPING
CENTER-Winchester Rd.
254-1412

1424 ALEXANDRIA DR.
Near Versailles Rd.
252-1034

"Where The Extras...Don't Cost Extra!"

**FEATURING BANQUET ROOM
FACILITIES FOR GROUPS:**

- Meetings
- Family Reunions
- Receptions
- Parties
- Rehearsal Dinners

**"SUNDAY'S AT DUFF'S IS LIKE SUNDAY AT GRANDMA'S
(...AND SO ARE THE OTHER SIX DAYS)"**

HOURS

Sunday 11-8:00 \$3.50

Monday-Thursday

Lunch 11-3 \$2.75

Dinner 3-8:00 \$3.50

Friday & Saturday

Lunch 11-3 \$2.75

Dinner 3-9:00 \$3.50

Special Low

Children's Prices

signed to cover four specific areas: FLEXIBILITY (important in body control and body movement in any sport); RUNNING (the 220-yard runs and running at forced intervals of 1½ to 2 minutes improves stamina, speed and the respiratory system); WEIGHT TRAINING (to work on body strength, endurance and muscular conditioning); and MENTAL TOUGHENING (designed to improve each player's mental approach).

The flexibility regimen concen-

The philosophy on weight training centers around the idea that the muscle must be put in a state of overload.

trates on stretching exercises. The 220-yard runs at forced intervals develops cardiovascular endurance and overall mental conditioning, according to the coach. By preventing fatigue from setting in so quickly, players can work with greater intensity.

The philosophy on weight training centers around the idea that, to achieve strength, the muscle must be put in a state of overload.



Sam Bowie puts his weight training to use.

Photo by Bill Straive

Weights lifted vary with each play-

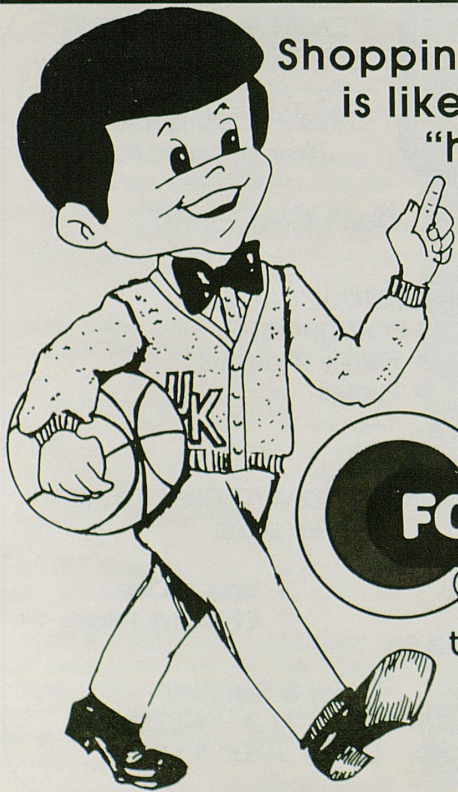
er. The player works up to a maximum weight and toward the end of the program, more emphasis is put on speed and the weight is decreased. The following weight routines are charted: power squats, cleans, step-ups, toe raises, jump splits, leg extensions, leg curls, military press and jump squats.

Along with a conditioning program, it is imperative that a proper diet be followed. Eight hours sleep each night is also important.

"We have found that our program develops that fourth area, 'mental toughness,'" said Coach Hall. "In a lot of our games we have found that it is close going into the last five minutes and then, the mental toughness from the weights and running, along with the conditioning, come into play.

"We have found that our running program philosophy goes along with our basketball philosophy: high intensity = high rewards."

(from "Kentucky's Conditioning Program for Basketball," by Joe B. Hall and Dwane Casey, published by Joe B. Hall and Lexington Productions. \$5 + \$1 handling from: Lexington Productions, 120 Kentucky Ave., Lexington, Ky., 40502).



**Shopping at FOODTOWN
is like enjoying a
"home court"
advantage!**

We're Central
Kentucky's finest
LOCALLY owned
and operated
supermarkets.

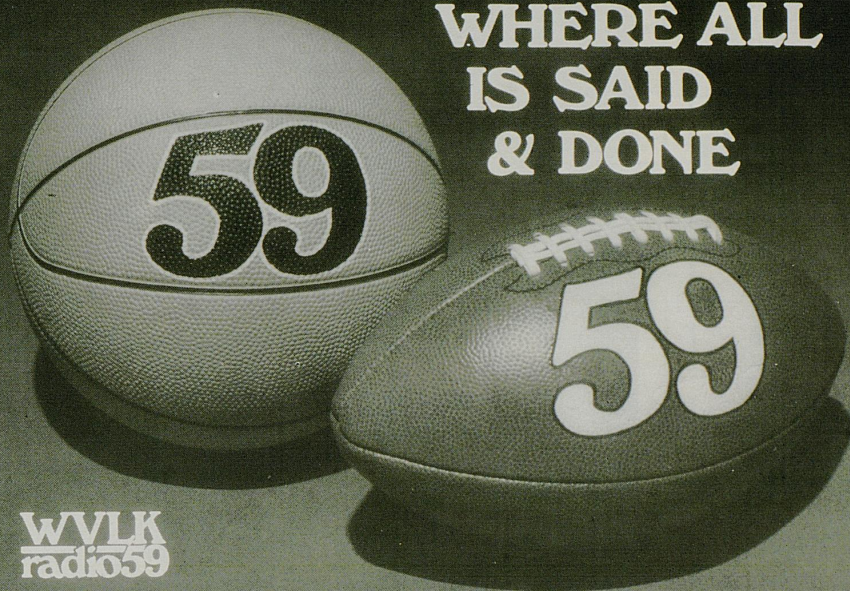
FOODTOWN

SUPER MARKETS

the stores with
"More for You"

WVLK RADIO 59 PLAYS BALL

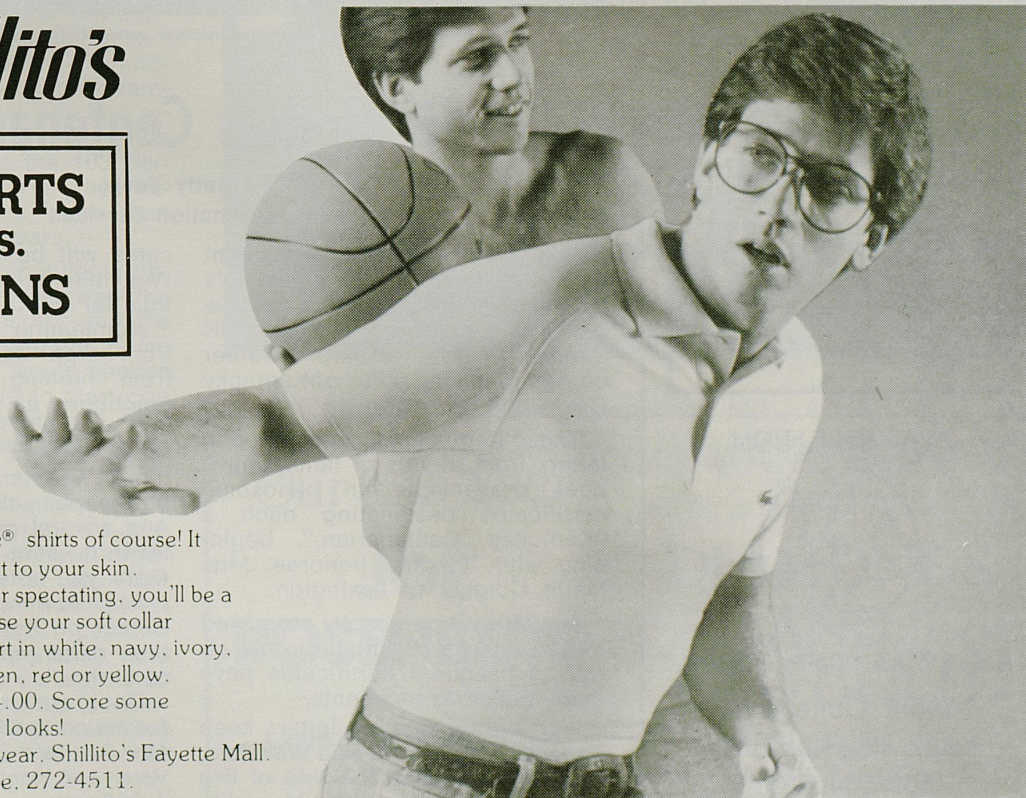
WHERE ALL
IS SAID
& DONE



WVLK
radio59

shillito's

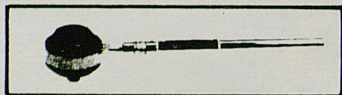
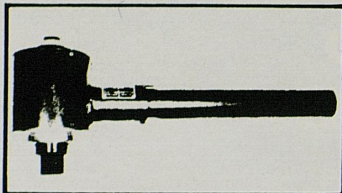
**SHIRTS
vs.
SKINS**



Izod® Lacoste® shirts of course! It feels great next to your skin. Participating or spectating, you'll be a winner. Choose your soft collar cotton lisle shirt in white, navy, ivory, light blue, green, red or yellow. S.M.L.XL. 24.00. Score some points in good looks! Men's Sportswear. Shillito's Fayette Mall. Shop by phone. 272-4511.

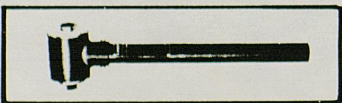
For local deliveries, please add 1.50 fee for orders under 25.00 or COD orders under 50.00, excluding tax.

**SWEENEY
UNIVERSAL
MULTIPLIERS
TORQUE**



A new family of universal torque multiplying wrenches.

These models have special application when space limitations are critical. The multiplying wrenches are gear-driven torque multipliers that multiply input torque either six or fifteen times at the output drive. Maximum rated output capacities vary from 1,000 ft-lbs to 8,000 ft-lbs depending on the model.



AVAILABLE FROM



A.C. BRAKE COMPANY, INC.

308 E. College St.
Louisville, Kentucky
502/584-5226

***Around Campus* Profile . . .**



Mrs. Marie Quigley, Lexington, receives certificate from Gov. Brown.

UK Honors Centenarians

**By Betty Tevis
UK Information Services**

Forty-six of what UK President Otis A. Singletary calls "the state's most respected citizens" have been honored recently by the UK Sanders-Brown Research Center on Aging and the office of Kentucky Gov. John Y. Brown Jr.

These Kentuckians, nominated in letters from friends or family, have been presented with handsome certificates designating each a "Kentucky Centenarian," beginning with the first honoree, Mrs. Marie Quigley of Lexington.

Gov. Brown personally presented Mrs. Quigley's certificate in his office; subsequent certificates have been mailed to recipients.

And the nominating letters keep coming in, said Dr. David Wekstein, Center director, at the rate of two to four a week. Another 24 certifi-

cates will be mailed in February, Wekstein said, bringing the total thus far to 70.

Nominating letters have come from area development districts, from nursing homes and from neighbors, as well as from friends and relatives of centenarians.

"We've had some delightful letters," Wekstein says, "many with newspaper clippings, snapshots. And several centenarians have afterward sent us very gracious thank-you notes."

Eligible persons should notify the Center on Aging in writing, giving their name, address, age and date of birth.

They are urged to send the information to Dr. David R. Wekstein, 101 Sanders-Brown Building, University of Kentucky, Lexington, Ky. 40536.

UK Grads Surveyed

By Jackie Bondurant
UK Information Services

Respondents to a survey of University of Kentucky graduates said college education had improved the quality of their lives and that if they had it to do over again they would choose to attend UK.

The mail survey was part of a University study to assess the impact of UK on the career development of its alumni. A random sample of 500 individuals was chosen from the Alumni Association membership list. The survey was conducted by the Office of Admissions.

The sample included four basic groups: alumni who had graduated with a baccalaureate degree at least a year ago, those who graduated three years ago, five years ago, or seven or more years previously.

The instrument used was a pilot questionnaire developed by the American College Testing Program, which included a set of questions designed by UK personnel.

Because of the University's special interest in the career development of undergraduate students—for this particular study—the findings were based entirely on a sample of 163 respondents who had received no UK degrees beyond the baccalaureate. All of the 163 persons were graduated from UK within the last nine years, more than half in the last four years.

At the time the respondents applied for admission, UK was the first choice of 87 percent and the second choice of 12 percent. Some 86 percent said they would choose UK again; and if able to start college again, 66 percent said they would choose to graduate with the same major.

Of those currently employed, 77 percent said their present occupation is highly and/or moderately related to their major at UK. This combined percentage was lowest in arts and sciences (61 percent) and education (66 percent), and highest in the health colleges (100 percent) and engineering (92 percent). The majority (79 percent) felt that UK had prepared them either "very well" or "moderately well" for their present occupation.



**LOOK FOR US...
WE'LL BE THERE!**

And we're sure you know when news is made in Central Kentucky, our reporters and photographers are there. A greatly expanded news team. Top notch field equipment and editing facilities. Informative news features.

**CONTACT 36
RESPONSIBLE NEWS
CONSUMER REPORTER
COMPREHENSIVE SPORTS
EYEWITNESS RADAR WEATHER**

**Monday thru Friday at Noon, 5:30 & 11:00 PM
Weekends 11:00 PM**

EYEWITNESS NEWS



Our 85th Year

**JOE
ROSENBERG**

*Corner Upper and Vine
Lexington, Ky.*

*Highest Prices
Paid for*

**DIAMONDS
AND
OLD GOLD**

*"Your Diamond Store
Since 1896."*

SEC TOURNAMENT

From first round action to the exciting championship game, SEC Tournament. Watch as the best teams in the conference

ACTION

don't miss a minute of the battle it out for first place.

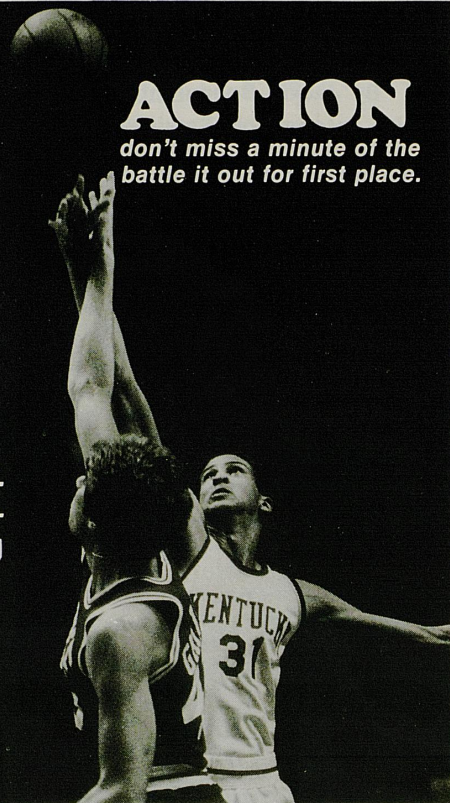
Opening Round: Wed., Mar. 4th & Thurs., March 5th

Semi-Final Round: Friday, March 6th

Championship Round: Saturday, March 7th

ALL LIVE AND EXCLUSIVELY ON CHANNEL 27.

Check local listings for game time.



CATS LOVE IT.

MILK'S
THE
ONE

THE DAIRY FARM
FAMILIES
OF KENTUCKY

american dairy association

WE'RE PROUD OF OUR KENTUCKY WILDCATS!

THE DAIRY FARM FAMILIES OF KENTUCKY AMERICAN DAIRY ASSOCIATION



The 1980-81 University of Kentucky Wildcats; front row left to right: Equipment Manager Bill Keightley, Head Coach Joe B. Hall, Dirk Minniefield, Bo Lanter, Jim Master, Chris Gettelfinger, Dicky Beal, Associate Coach Leonard Hamilton, and Manager George Fletcher. Back row left to right: Trainer Walt McCombs, Volunteer Assistant Harry Lancaster, Chuck Verderber, Fred Cowan, Bret Bearup, Melvin Turpin, Sam Bowie, Tom Heitz, Charles Hurt, Derrick Hord, Part-time Assistant Bob Chambers, and Assistant Coach Joe Dean.

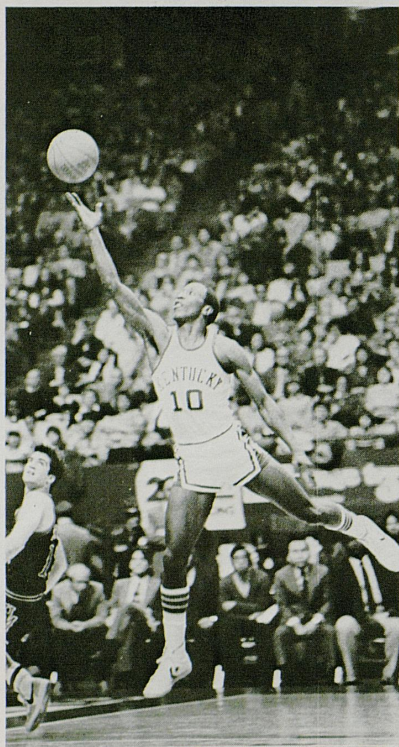


KENTUCKY ROSTER

No.	Name	Pos.	Cl.	Ht.	Wt.	Exp.	Hometown
10	Dirk Minniefield	G	So.	6-3	180	1L	Lexington, Ky.
11	Dicky Beal	G	Fr.	5-11	170	—	Covington, Ky.
12	Bo Lanter	G	Jr.	6-1	175	1L	Versailles, Ky.
15	Chris Gettelfinger	G	Sr.	6-2	185	1L	Knoxville, Tn.
20	Jim Master	G	Fr.	6-4	170	—	Ft. Wayne, In.
24	Bret Bearup	F	Fr.	6-9	230	—	Centerport, N.Y.
31	Sam Bowie	C	So.	7-1	235	1L	Lebanon, Pa.
32	Derrick Hord	G-F	So.	6-6	215	1L	Bristol, Tn.
34	Chuck Verderber	F	Jr.	6-6	225	2L	Lincoln, Il.
40	Fred Cowan	F	Sr.	6-8	225	3L	Sturgis, Ky.
44	Charles Hurt	F	So.	6-6	215	1L	Shelbyville, Ky.
54	Melvin Turpin	C	Fr.	6-11	240	—	Lexington, KY.

american dairy association

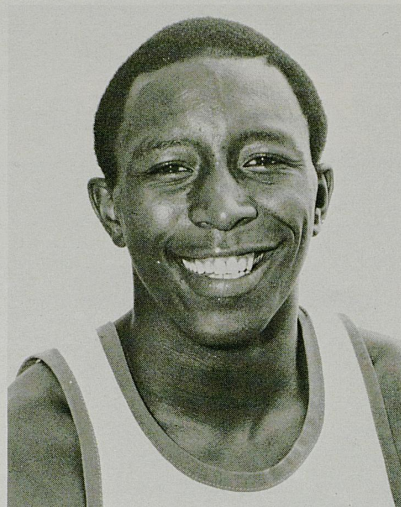
Dirk Minniefield



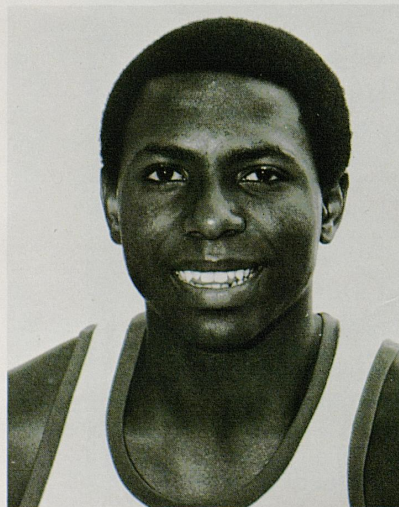
Position: Guard
Class: Sophomore
Height: 6'3"
Weight: 180
Birthday: 1-17-61
Hometown: Lexington
Major: Arts and Sciences

10

Dirk Minniefield...excellent speed and quickness...set the UK record handing out 13 assist at Mississippi State...scored a season high 14 points in the same game...was a starter for Coach Hall in 18 games as a freshman...led Lafayette High School to 1979 Kentucky State Championship... "Mr. Basketball"...three time All-State...won MVP honors in the first Derby Classic in 1979.



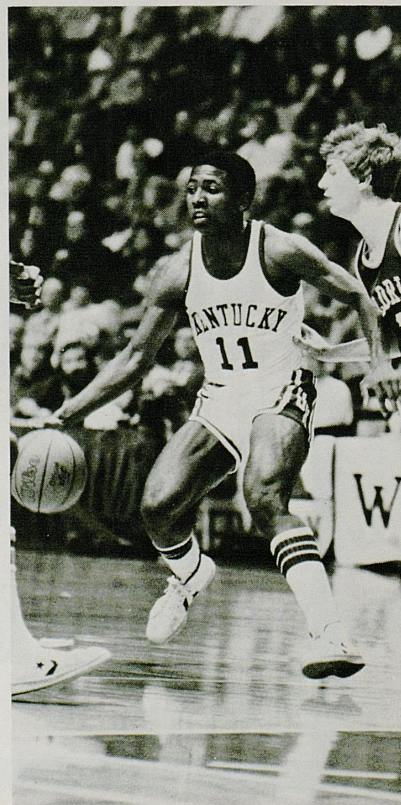
Dicky Beal

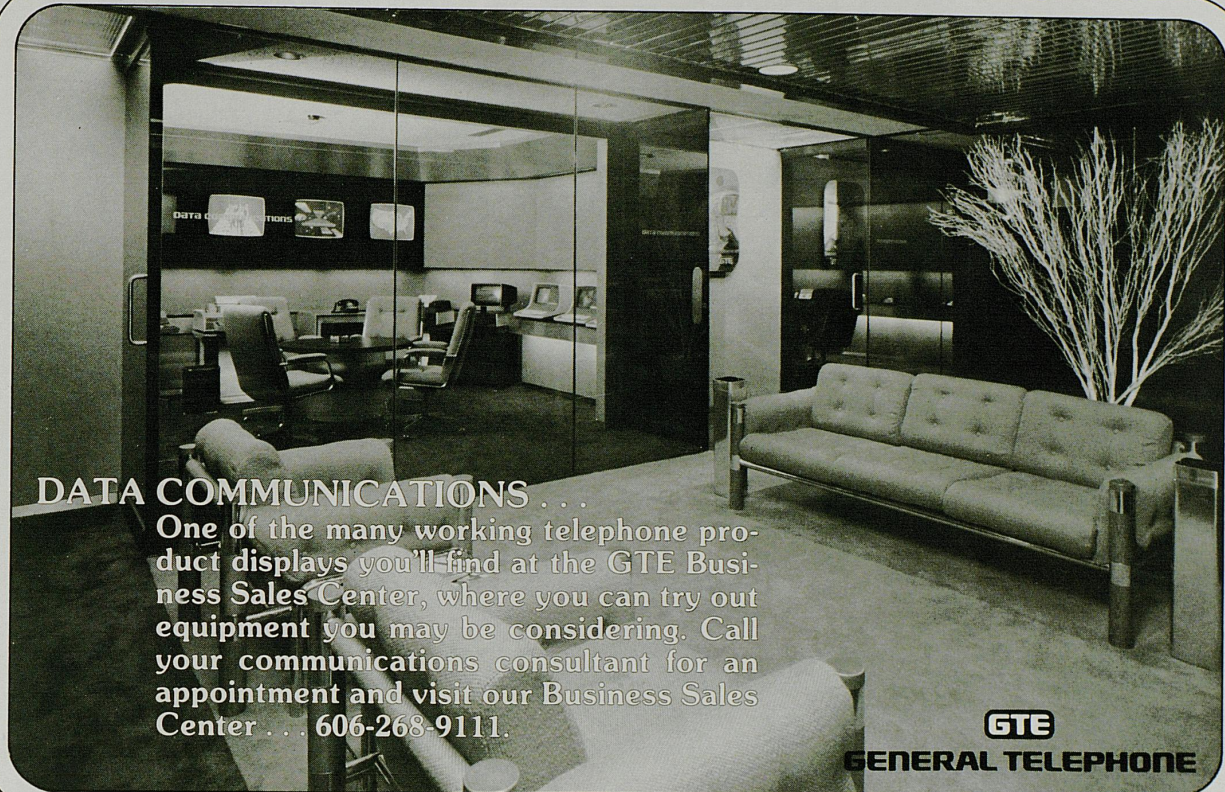


Position: Guard
Class: Freshman
Height: 5'11"
Weight: 170
Birthday: 9-18-62
Hometown: Covington
Major: Arts and Sciences

11

Averaged 23.6 ppg., 6.5 rpg. and 8.3 assists as a senior...led Covington Holmes to the 1980 Kentucky State Tournament and a 33-3 record...exceptional jumping ability...named to several prep All-America teams...played in Atlanta Classic and Kentucky-Indiana All-Star games...four year letterman...scored a career high 50 points vs. Covington Holy Cross.





DATA COMMUNICATIONS . . .

One of the many working telephone product displays you'll find at the GTE Business Sales Center, where you can try out equipment you may be considering. Call your communications consultant for an appointment and visit our Business Sales Center . . . 606-268-9111.

GTE
GENERAL TELEPHONE

Rally round the Wildcats at the Hyatt Regency pre-game buffet.

Beginning Saturday, November 29, and continuing all season long, the Hyatt Regency will offer a pre-game buffet before each evening Wildcat home game and the U.K.I.T. The buffet will open at 5 p.m. and feature hearty food specially prepared for basketball fan appetites.

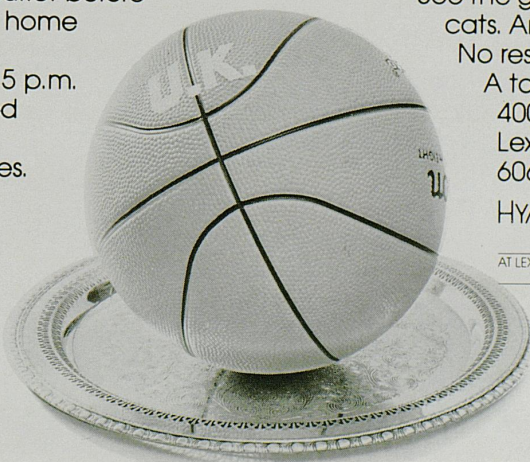
Arrive early. Avoid the parking hassle. Be hungry. Enjoy the food. Stroll over to the arena. See the game. Cheer for the Wildcats. And have fun.

No reservations necessary.

A touch of Hyatt
400 West Vine Street
Lexington, Kentucky 40507
606-253-1234.

HYATT REGENCY  LEXINGTON

AT LEXINGTON CENTER



"THERE'S MORE GASOLINE WHERE THIS CAME FROM. ASHLAND MEANS TO KEEP IT COMING."



Harold Chadwick runs the demonstration coal liquefaction plant operated by Ashland Oil.

"We are now successfully converting coal into synthetic crude oil. After we finish testing this process, we plan to build a commercial plant to produce synthetic crude oil for refining into gasoline."

Gasoline for your car from America's abundant supply of coal. At Ashland, we don't just search for oil, we research for energy.



YOUR ENERGY NEEDS, WE'RE WORKING ON THEM. 



**Home of
14 CHAMPIONS
or Sires of CHAMPIONS!**

LESLIE COMBS II
Spendthrift

Brownell Combs II President, P.O. Box 996, Lex., Ky. 40588 (606)299-5271

Affiliate
Affirmed
Big John Taylor
Blue Times
Bald Hour
Caro
Coiak
Cornish Prince
Delta Oil
Exclusive Native
Gallant Man
Golden Man
Grey Legion
J.O. Tobin
Jungle Savage
Kentucky Gold
List
Majestic Prince
Marshua's Dancer
Nashua
Nashua and Dancer
Native and Bold
Northern Royalty
Princely Jove
Proud Clarion
Raise a Native
Seattle Slew
Sham
Silent Cal
Sired
Triple Bend
Turn to Mars
Valdez
Wajima

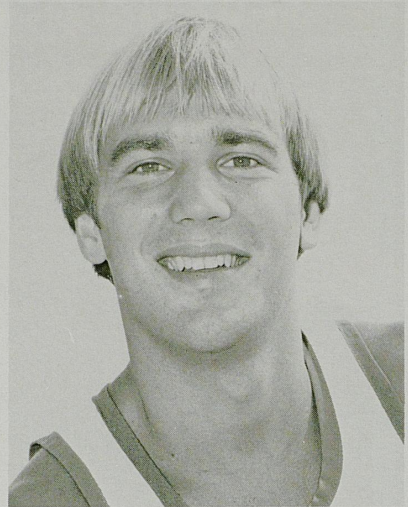


Bo Lanter

Position: Guard
Class: Junior
Height: 6'1"
Weight: 175
Birthday: 9-4-59
Hometown: Versailles
Major: Public Relations

12

A walk-on at UK from Midwestern State in Texas . . . played exceptionally well against Notre Dame . . . described by Coach Hall as a team player . . . played high school ball at Woodford County in Versailles . . . averaged 20 points and seven rebounds as a junior and a senior.

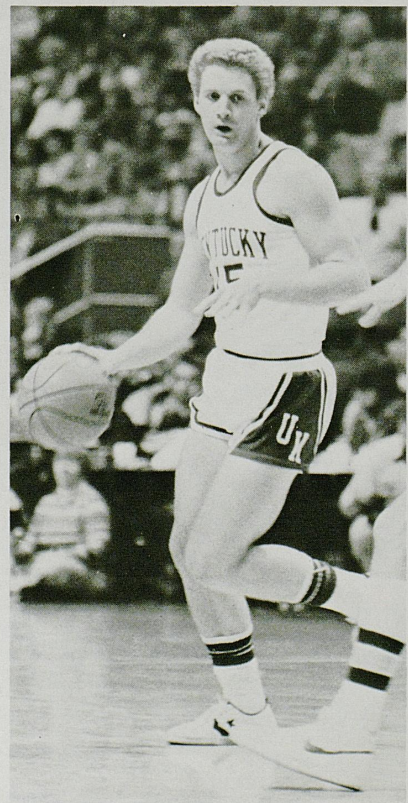
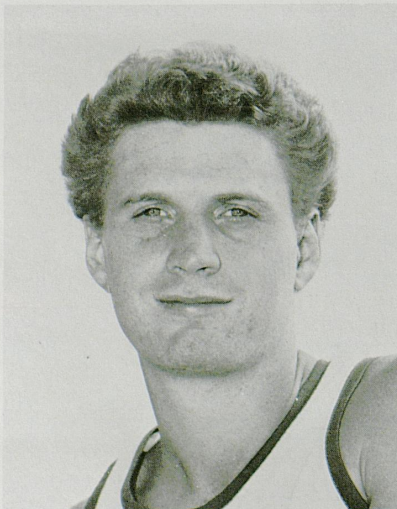


Chris Gettelfinger

Position: Guard
Class: Senior
Height: 6'2"
Weight: 185
Birthday: 4-1-58
Hometown: Knoxville, Tenn.
Major: Business Administration

15

Another walk-on . . . like Lanter, Chris earned a scholarship . . . scored a career high six points at Mississippi State in only one minute of play . . . solid defensively . . . averaged 24 ppg. as a senior at Catholic High School in Knoxville . . . averaged 24.4 and 25 as a junior and sophomore in high school, respectively . . . led Catholic to state finals in 1974 and 1976.



We salute the Kentucky Wildcats
with the U of K pep song.

On, on U of K
We are right
for the fight, today.
Hold that ball
and hit that line,
Every Wildcat star will shine.
We'll fight, fight, fight
for the blue and white.
As we roll to that goal, varsity.
We will kick, pass and run
Till the battle is won
and we'll bring home a victory.



T. O. Jack Hall, CLU
Suite 600
Louisville Trust Bldg.
Louisville, KY 40202
(502) 587-0936



Leonard "Babe" Ray, CLU
506 Security Trust Bldg.
Lexington, KY 40507
(606) 255-8722

INSURANCE FOR YOU AND YOUR BUSINESS

**LIFE • DISABILITY
GROUP • RETIREMENT**



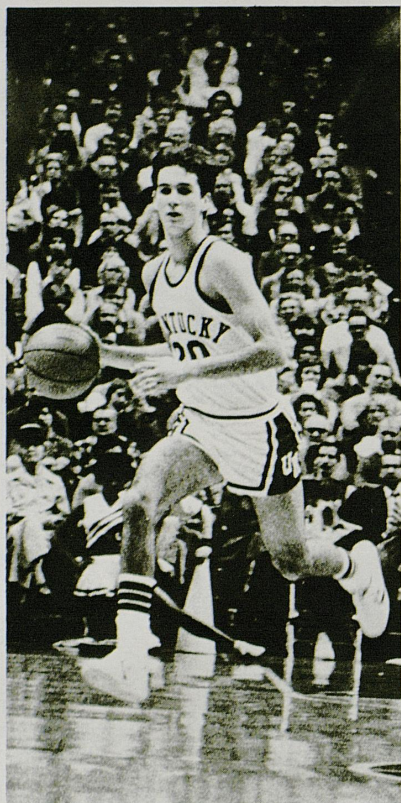
Stewart's says
"Go Big Blue"

the short sleeve terry
from Kennington is
the way to go and cheer
them on

In navy, rust, cream, lt. blue and
hunter green with knit collar. S-M-L-
XL. D085 The Varisty Shop, Fayette
Mall

\$17

Stewart's

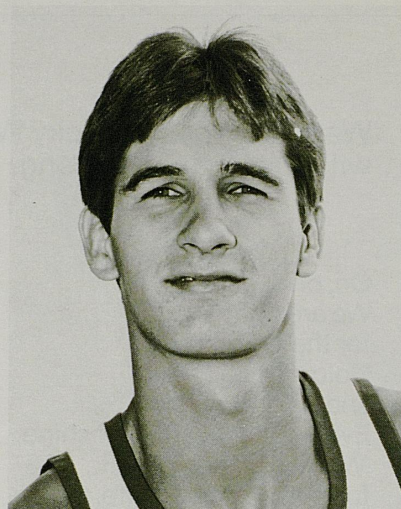


Jim Master

Position: Guard
Class: Freshman
Height: 6'4"
Weight: 170
Birthday: 3-16-62
Hometown: Ft. Wayne, Ind.
Major: Arts and Sciences

20

Indiana's "Mr. Basketball" in 1979-80... consensus prep All-America... averaged 27.8 ppg. and connected on 52 percent from the field... single game high of 43 points... scored 30 consecutive points in 12 minutes vs. state ranked Southside High... played in numerous All-Star games... only one of three players to take part in the National Sports Festival in Colorado Springs.

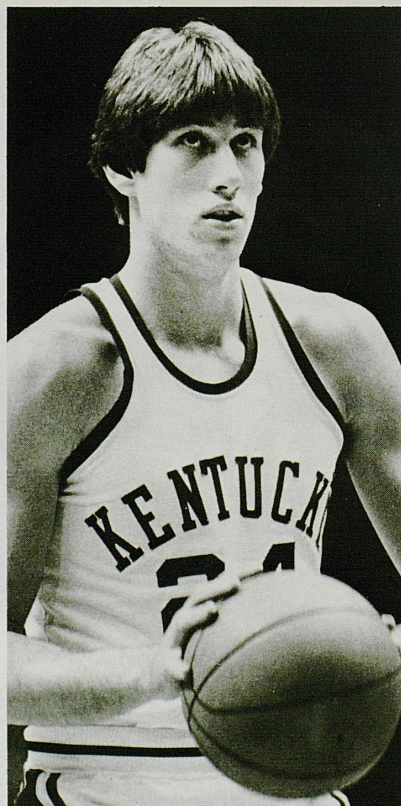
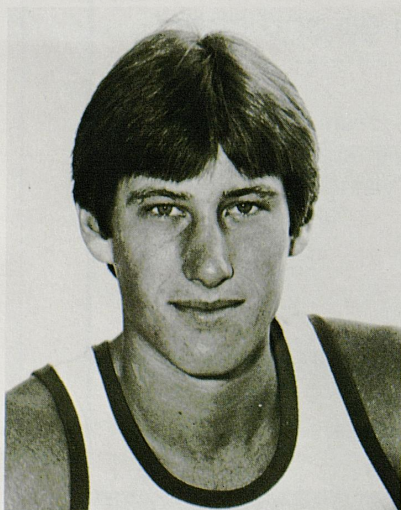


Bret Bearup

Position: Forward
Class: Freshman
Height: 6'9"
Weight: 230
Birthday: 11-17-61
Hometown: Centerport, N. Y.
Major: Arts and Sciences

24

Consensus prep All-America... ranked number one power forward in the country... two-time All-Stater... played in Capital Classic, Derby Classic, McDonald's East-West All-Star game... went to Europe with the New York all-star team... as a senior Bret averaged 28.5 ppg., 17 rpg. and shot 60 percent from the field... one of the players to break the 300 pound barrier in the clean and jerk during conditioning.





Crescent Farm

3800 Bryan Station
Lexington, Kentucky



"Coca-Cola" and "Coke" are registered trade-marks which identify the same product of The Coca-Cola Company.

KENTUCKY WILDCAT SCORECARD

Min	FGA, FTA, Rebound, Assists	FG	FT	PF	TP
23	Verderber 7,0,8,0	1 2 3 4 5 6 7 8 9 10 11 12 13 14 15	1 2 3 4 5 6 7 8 9 10 11 12	1 2 3 4 5	8
15	Hurt 2,0,1,0	1 2 3 4 5 6 7 8 9 10 11 12 13 14 15	1 2 3 4 5 6 7 8 9 10 11 12	1 2 3 4 5	0
35	Bowie 16,10,15,3	1 2 3 4 5 6 7 8 9 10 11 12 13 14 15	1 2 3 4 5 6 7 8 9 10 11 12	1 2 3 4 5	19
17	Minniefield 11,3,3,2	1 2 3 4 5 6 7 8 9 10 11 12 13 14 15	1 2 3 4 5 6 7 8 9 10 11 12	1 2 3 4 5	17
28	Beal 1,5,1,5	1 2 3 4 5 6 7 8 9 10 11 12 13 14 15	1 2 3 4 5 6 7 8 9 10 11 12	1 2 3 4 5	3
13	Master 2,0,0,0	1 2 3 4 5 6 7 8 9 10 11 12 13 14 15	1 2 3 4 5 6 7 8 9 10 11 12	1 2 3 4 5	0
15	Bearup 6,5,5,0	1 2 3 4 5 6 7 8 9 10 11 12 13 14 15	1 2 3 4 5 6 7 8 9 10 11 12	1 2 3 4 5	9
23	Hord 9,3,6,5	1 2 3 4 5 6 7 8 9 10 11 12 13 14 15	1 2 3 4 5 6 7 8 9 10 11 12	1 2 3 4 5	7
17	Cowan 6,6,4,0	1 2 3 4 5 6 7 8 9 10 11 12 13 14 15	1 2 3 4 5 6 7 8 9 10 11 12	1 2 3 4 5	11
10	Turpin 3,2,4,0	1 2 3 4 5 6 7 8 9 10 11 12 13 14 15	1 2 3 4 5 6 7 8 9 10 11 12	1 2 3 4 5	4
2	Lantero 0,0,1,1	1 2 3 4 5 6 7 8 9 10 11 12 13 14 15	1 2 3 4 5 6 7 8 9 10 11 12	1 2 3 4 5	0
2	Gettelfinger 2,0,1,0	1 2 3 4 5 6 7 8 9 10 11 12 13 14 15	1 2 3 4 5 6 7 8 9 10 11 12	1 2 3 4 5	2
200	TOTAL 65,34,49,16	28-65	24-34	28	80



TO-9

Bluegrass Coca-Cola



Have a Coke[®]
and a smile.

VISITORS SCORECARD

Min	FGA	FGA	Rebounds	Assists	FG								FT								PF	TP			
34	Jones	12	5	12	0	1	2	3	4	5	6	7	8	1	2	3	4	5	6	1	2	3	4	5	14
27	Young	6	0	5	0	1	2	3	4	5	6	7	8	1	2	3	4	5	6	1	2	3	4	5	4
13	Turner	5	0	2	2	1	2	3	4	5	6	7	8	1	2	3	4	5	6	1	2	3	4	5	0
30	McKinney	3	4	2	3	1	2	3	4	5	6	7	8	1	2	3	4	5	6	1	2	3	4	5	7
14	Miller	7	2	4	1	1	2	3	4	5	6	7	8	1	2	3	4	5	6	1	2	3	4	5	5
2	Weikert	0	0	0	0	1	2	3	4	5	6	7	8	1	2	3	4	5	6	1	2	3	4	5	0
15	Lenz	3	5	1	0	1	2	3	4	5	6	7	8	1	2	3	4	5	6	1	2	3	4	5	3
26	Rhodes	9	7	5	0	1	2	3	4	5	6	7	8	1	2	3	4	5	6	1	2	3	4	5	12
3	Williams	1	0	1	0	1	2	3	4	5	6	7	8	1	2	3	4	5	6	1	2	3	4	5	0
23	Allsmiller	3	2	3	0	1	2	3	4	5	6	7	8	1	2	3	4	5	6	1	2	3	4	5	1
3	Derenbecker	2	2	0	0	1	2	3	4	5	6	7	8	1	2	3	4	5	6	1	2	3	4	5	1
10	Linder	2	7	5	1	1	2	3	4	5	6	7	8	1	2	3	4	5	6	1	2	3	4	5	1
200	TOTAL	53	34	46	7	14-53								20-34								30	48		

Team Rebounds - 5
TO - 18



"STATE OF THE ART" Dining

Casa Executiva

(EXECUTIVE HOUSE)



Relax and enjoy . . .

Simply put, we offer the ultimate in elegant dining . . . from tantalizing appetizers to a provocative offering of unusual American, Continental or Italian dishes, complemented by an incomparable selection of choice vintage wines and cocktails.

At Casa Executiva, we invite you to savor selections from a menu which is a cut above the rest . . . including veal, lamb, quail, lobster, scampi, frog legs, steaks, beef Wellington, dover sole and pasta (fettucine Alfredo, tortellini, cavatelli, mannicotti, canelloni, etc.).

Then the finish . . . a delectable selection from our pastry cart or a flaming dessert (bananas Foster, cherries jubilee, baked alaska, etc.). Experience all of this in the elegant atmosphere of a restored 18th century mansion.

We're the ONLY Lexington gourmet restaurant with full tableside service.

Casa Executiva. ASK ANYBODY!

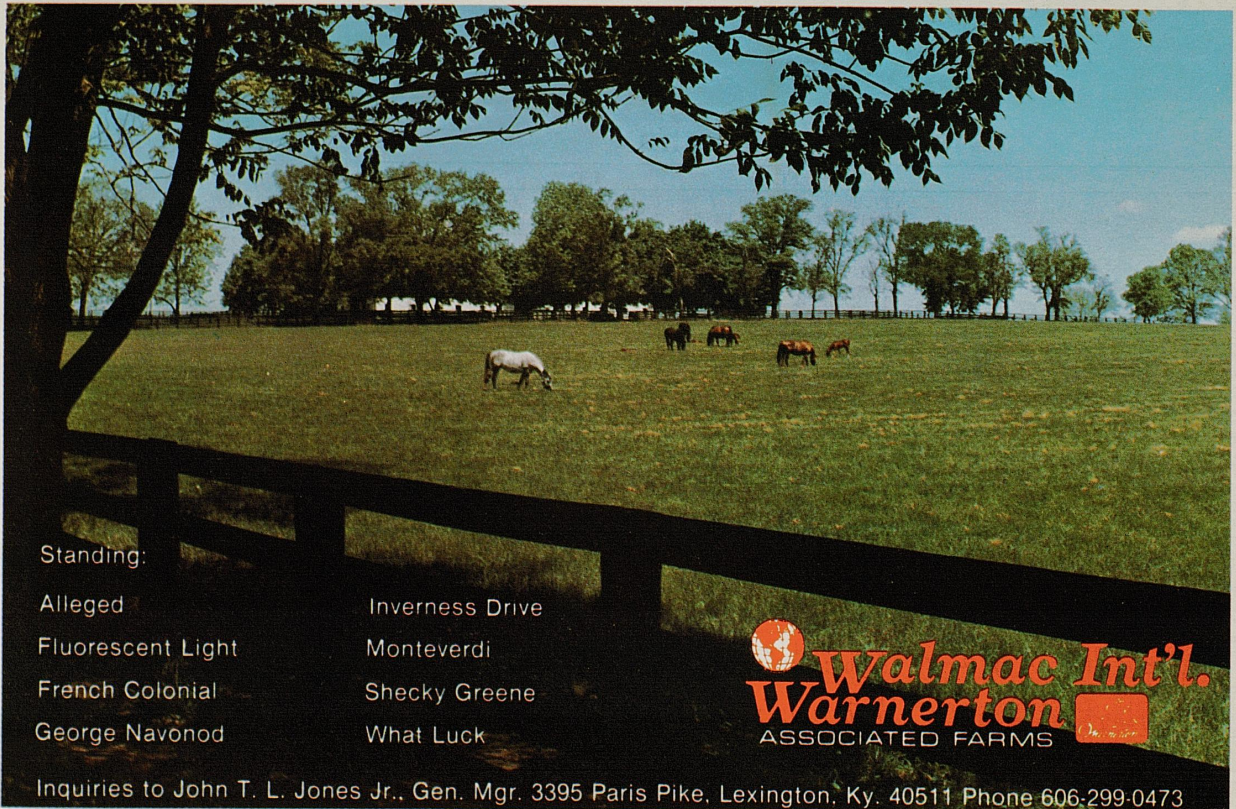
...the ultimate dining experience

*OPEN FOR DINNER ONLY *ALL MAJOR CREDIT CARDS HONORED

*FREE PARKING

*RESERVATIONS-254-6263
253-1174

"Casa Executiva" located at 270 South Limestone (Limestone at Maxwell)



Standing:

Alleged

Fluorescent Light

French Colonial

George Navonod

Inverness Drive

Monteverdi

Shecky Greene

What Luck

Walmac Int'l.
Warnerton
ASSOCIATED FARMS

Inquiries to John T. L. Jones Jr., Gen. Mgr. 3395 Paris Pike, Lexington, Ky. 40511 Phone 606-299-0473



Sam Bowie

Position: Center

Class: Sophomore

Height: 7'1"

Weight: 235

Birthday: 3-17-61

Hometown: Lebanon, Pa.

Major: Business Administration

31

Sam is considered the top collegiate center...led the US Olympic Team to five victories against a team of NBA All-Stars in the "Gold Medal Games"...led Olympic team in rebounding, blocked shots and minutes...started 33 games as a freshman...UK's leading rebounder and second leading scorer last season...All-SEC, SEC All-Tournament, SEC Freshman-of-the-Year...added considerable weight and strength during the summer...prep All-American...holds all Lebanon High School scoring and rebounding records.



Derrick Hord

Position: Forward-Guard

Class: Sophomore

Height: 6'6"

Weight: 215

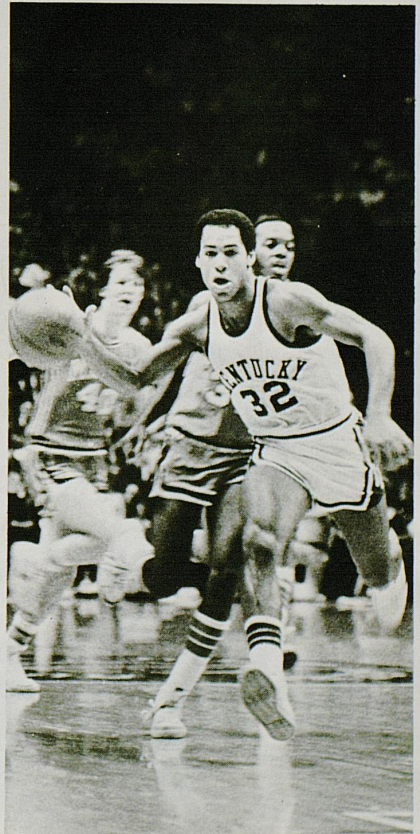
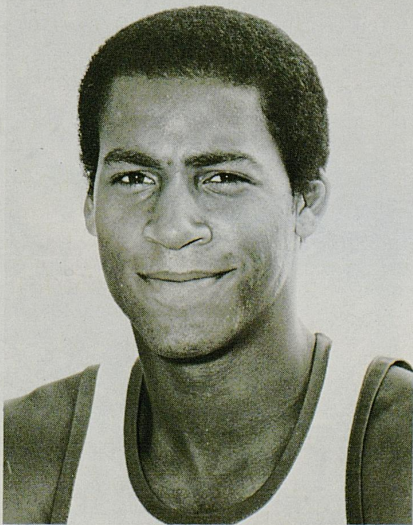
Birthday: 9-19-60

Hometown: Bristol, Tenn.

Major: Communications

32

Derrick will see action at both forward and guard this season...very quick and super strong...played in all 35 games for the Cats last year...averaged 5.9 points and 2.5 rebounds...scored season high 18 points vs. Florida and South Carolina...had a game high 11 rebounds in a starting role vs. Notre Dame...played for Tennessee High in Bristol and was named to every prep All-America team...averaged 27.6 ppg. and 13.4 rebounds as a prep senior.



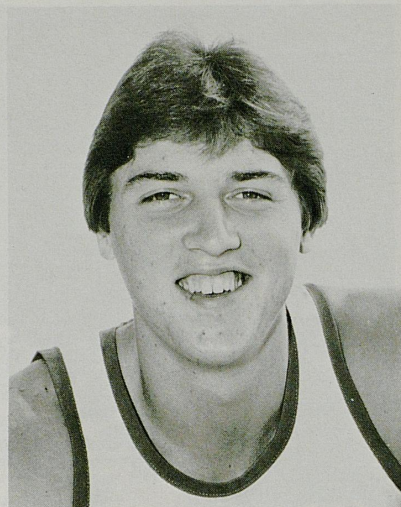
Chuck Verderber



Position: Forward
Class: Junior
Height: 6'6"
Weight: 225
Birthday: 11-3-59
Hometown: Lincoln, Ill.
Major: Pre-Dental Studies

34

Chuck is a hard-nosed leader...always plays hard off the bench...scored 11 points vs. Alaska in Anchorage...had a 52.1 field goal percentage and 73.7 free throw percentage...had a career high 22 points and 13 rebounds vs. Florida in 1979...holds nine Lincoln High School records...scored 44 points in a sectional game against Danville.

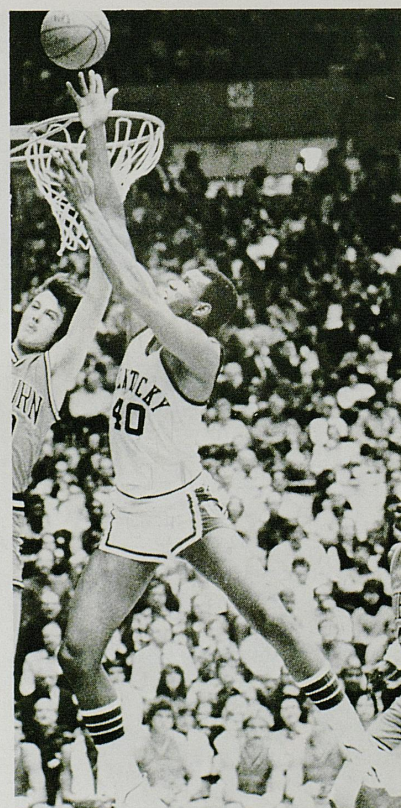
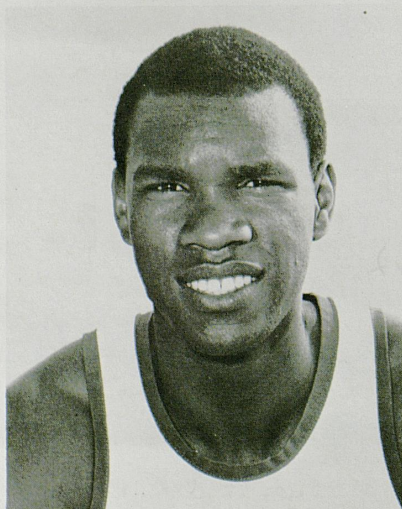


Fred Cowan

Position: Forward
Class: Senior
Height: 6'8"
Weight: 225
Birthday: 4-23-58
Hometown: Sturgis
Major: Arts and Sciences

40

Freddie is only one of two seniors...he is expected to provide leadership for the Cats...very dedicated and hard working...was the spark in a one-point lose to Duke ending the '79-'80 campaign scoring 26 points...scored a career high 27 points in UK's SEC title clincher against LSU...averaged 12.5 ppg...scored in double figures 23 times...named to All-Tournament Team in the UKIT and Great Alaskan Shootout...led Union County High School to regional title as a senior.

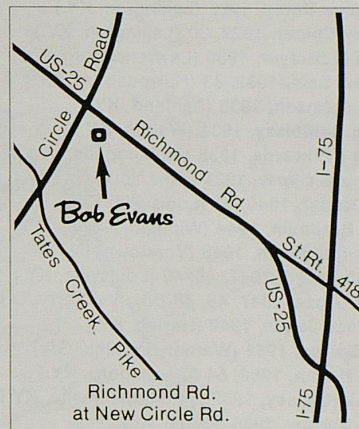


AT BOB EVANS, A BISCUIT MORE THAN AN HOUR OLD WILL NEVER CROSS YOUR LIPS.

Every day, we make our biscuits from scratch and bake them just before you're ready to eat them. Then we serve them hot with lots of fresh honey.

Our sausage is made fresh from the best cuts. And every day we make our special sauce for our boneless barbeque ribs.

At Bob Evans Restaurants, because we're so careful from the beginning, our food tastes better in the end.



Bob Evans FARMS® RESTAURANTS

Richmond Rd. at New Circle Rd.

© 1980 BOB EVANS FARM FOODS, INC.



“Good Luck to the Wildcats”

Claiborne Farm

Paris, Kentucky

UK ALL-AMERICANS

- Basil Hayden**, 1921 (Paris, KY.)
Burgess Carey, 1925 (Lexington, KY.)
Carey Spicer, 1929, 30 (Lexington, KY.)
Paul McBrayer, 1930 (Lawrenceburg, KY.)
Forest Sale, 1932, 33 (Harrodsburg, KY.)
Ellis Johnson, 1933 (Ashland, KY.)
John DeMoisey, 1934 (Walton, KY.)
LeRoy Edwards, 1935 (Indianapolis, IN.)
Bernard Oppen, 1939 (New York, N. Y.)
Lee Huber, 1940, 41 (Louisville, KY.)
Bob Brannum, 1944 (Winfield, KS.)
Jack Parkinson, 1946 (Yorktown, IN.)
Ralph Beard, 1947, 48, 49 (Louisville, KY.)
Alex Groza, 1947, 48, 49 (Martins Ferry, O.)
Wallace Jones, 1949 (Harlan, KY.)
Bill Spivey, 1951 (Warner Robbins, GA.)
Cliff Hagan, 1952, 54 (Owensboro, KY.)
Frank Ramsey, 1952, 54 (Madisonville, KY.)
Bob Burrow, 1956 (Wells, TX.)
Vernon Hatton, 1958 (Lexington, KY.)
Johnny Cox, 1959 (Hazard, KY.)
Cotton Nash, 1962, 63, 64 (Lake Charles, LA.)
Pat Riley, 1966 (Schenectady, N. Y.)
Louie Dampier, 1966 (Indianapolis, IN.)
Dan Issel, 1969, 70 (Batavia, IL.)
Kevin Grevey, 1974, 75 (Hamilton, O.)
Jack Givens, 1976, 77, 78 (Lexington, KY.)
Rick Robey, 1977, 78 (New Orleans, LA.)
Kyle Macy, 1979 (Peru, IN.)



GREAT MEXICAN FOOD

IN LEXINGTON:

3251 Nicholasville Rd.
(Across from Fayette Mall)

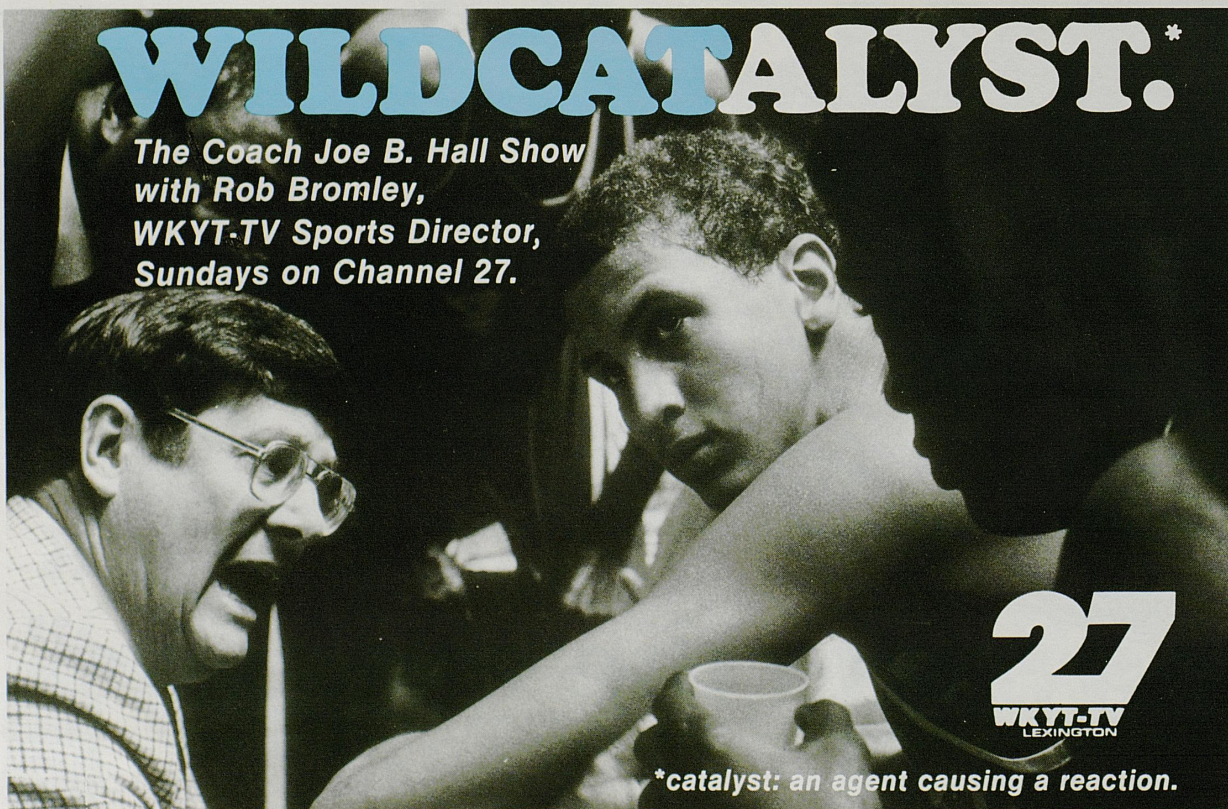
IN LOUISVILLE:

10430 Shelbyville Rd.
(Stonefield Square Shopping Center)

Visit Us After the Game!

WILDCATALYST.*

The Coach Joe B. Hall Show
with Rob Bromley,
WKYT-TV Sports Director,
Sundays on Channel 27.

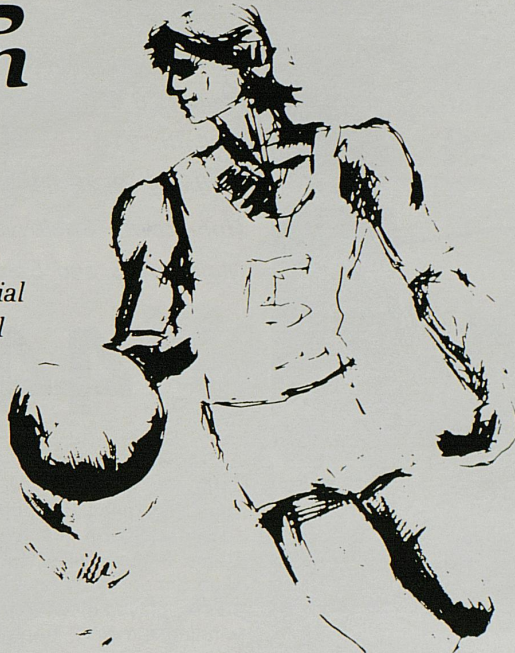


27
WKYT-TV
LEXINGTON

**catalyst: an agent causing a reaction.*

Practicing Perfection

Building a great Wildcat basketball team into champions requires the dedication of both players and staff...to set and achieve goals game by game. You can reach your financial goals with the help of Second National Bank. After all, at Second we practice our "helping people first" game plan everyday. Member F.D.I.C.



Second National Bank

WILD!
SHOW YOUR KENTUCKY SPIRIT!
GIFTS OF DISTINCTION FOR THE
TRUE BLUE FAN. ALL ITEMS
TRIMMED IN 22 KT. GOLD.



- A Basketball Bank 9.00
- B 2 oz Whiskey Shot 2.00
- C 2 1/2 oz Salt & Pepper Shaker Set 7.75
- D 20 oz Team Mug 11.00, Set of 4 - 40.00
- E 15 oz Tankard 9.85, Set of 4 - 35.00
- F 24 oz Viking Mug 9.00, Set of 4 - 32.00
- G 11 oz Coffee Mug 5.00, Set of 4 - 18.00
- H Horn Mug 9.50, Set of 4 - 35.00
- I Football Bank 9.00
- J 9 1/2 oz Old Fashion 3.50, Set of 4 - 12.00
- K 13 oz Glass Tankard 6.00, Set of 4 - 22.00
- L Set of 1/2 Liter Wine Carafe / 4 Glasses 32.00
- M 5 1/2 oz Brandy Snifter 4.40, Set of 4 - 14.50
- N 15 oz Old Fashion (also available in 9 1/2 oz.) 4.30, Set of 4 - 14.00
- O 5 1/2" Square Ashtray 8.50

INSERT NUMBER OF ITEMS:

A	D	G	J	M
B	E	H	K	N
C	F	I	L	O

MAIL ORDERS TO:

Wildcat Ceramics
P.O. Box 530
Versailles, Kentucky 40383

SEND TODAY FOR YOUR WILDCAT CERAMICS OR GLASSWARE.
Great for gifts or any Wildcat fan. Enclosed is \$ _____ or Visa _____ (check one).

of Items: _____
 Credit Card No.: _____
 MC in Interbank No.: _____
 Expiration Date: _____
 Signature: _____
 Name: _____
 Address: _____
 City: _____
 State, Zip: _____

Plus 5% sales tax.



Charles Hurt

Position: Forward

Class: Sophomore

Height: 6'6"

Weight: 215

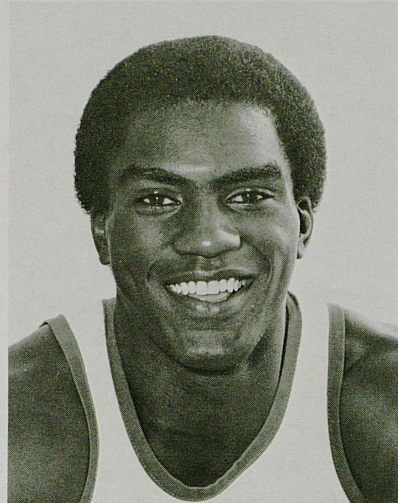
Birthday: 3-28-61

Hometown: Shelbyville

Major: Arts and Sciences

44

A tremendous leaper with outstanding strength...played in all 35 games last year...averaged 3.9 ppg. and 2.5 rpg...scored a season high 10 points vs. Notre Dame in Louisville...led Shelby County High School to the state championship in 1978...played in two Derby Classic games winning the MVP trophy once.



Melvin Turpin

Position: Center

Class: Freshman

Height: 6'11"

Weight: 240

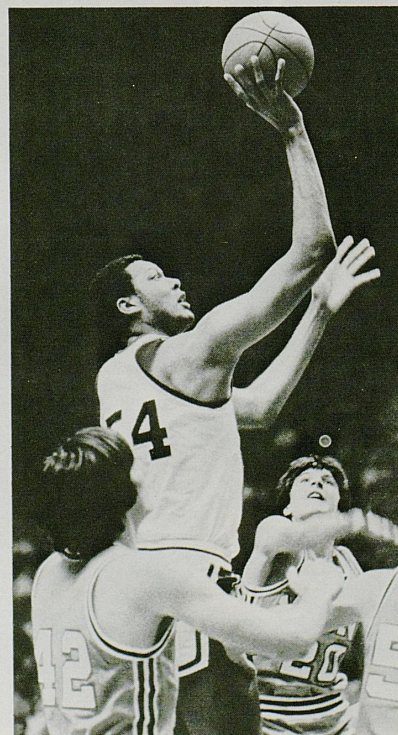
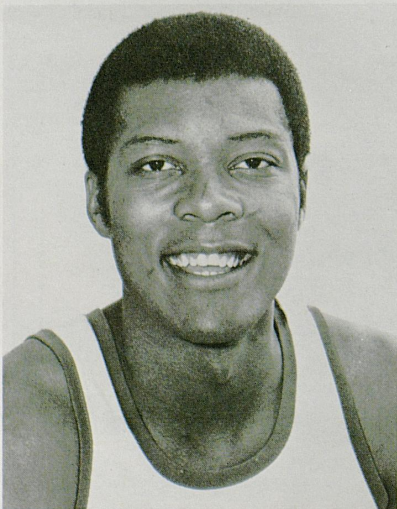
Birthday: 12-28-60

Hometown: Lexington

Major: Arts and Sciences

54

Attended prep school at Fork Union Military Academy last year...led the Academy to a 25-1 record...averaged 24.5 points, 14.2 rebounds and 7.5 blocked shots per game...played for Lexington Bryan Station...had a 24 points and 15 rebounds average as a senior...great shooting touch...played in several post-season tournaments...has gained weight and strength since being on the UK weight program.



CELLA

Imported Wines



**What a taste to
Cellabrate**

Sole Distributors for the U.S.A.,
The Jos. Garneau Co., New York, N.Y.

The Campbell House Inn

300 Rooms
Jacuzzi Suites
Bridal Suites
Color Television
Dining Room
Coffee Shop
Cocktail Lounge
... live entertainment

Convenient to Rupp Arena, Join us after the game
Phone (606)255-4281
1375 Harrodsburg Road
Lexington, Kentucky 40504

Meeting Rooms
Game Room
Year Around Swimming
enclosed tropical pool

... for traditional southern hospitality



Toll Free Numbers Ky. only (800) 432-9254 Other States (800) 354-9235 All Major Credit Cards Accepted

Is Northwestern Mutual Crazy?



Yeah, like a fox.

When the Northwestern Mutual Life Insurance Company announced its "GET MORE OUT OF LIFE" program this year, other life insurance companies were a bit worried. Imagine America's 9th largest life insurance company offering permanent policyowners a 14% average increase in coverage without increasing the policy premium*. While future dividends will be slightly lower than they would have been, future cash values on these policies will be higher. This offer is made possible because of a massive and dedicated effort in research and development. It provides a tax savings which can be channeled back to the true owners of the company, the policyowners. The "GET MORE OUT OF LIFE" program is just another example of over a century of continued dedication to providing the best possible life insurance value. As for those other life insurance companies ... guess you can say they've been out-foxed again.

*Policies issued after December 31, 1977 already contain these improved features.

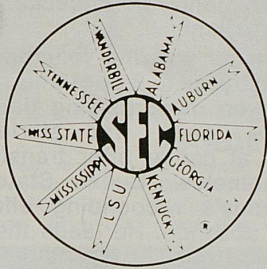
FOR MORE INFORMATION AND CAREER OPPORTUNITIES CALL THE LEXINGTON AGENCY. FRANK A. FISHER JR., CLU, GENERAL AGENT. CORPORATE CENTER, 801 CORPORATE DRIVE, LEXINGTON, KENTUCKY.
PHONE: (606) 223-4545
IN CORBIN, CALL (606) 528-8070.
IN DANVILLE, CALL (606) 236-7468.
IN FRANKFORT, CALL (502) 223-0500.

Northwestern Mutual Life is represented only by Northwestern agents and not by brokers or agents from other companies.

NORTHWESTERN MUTUAL LIFE
The Quiet Company

usually

The SEC: "The Homestretch"



TONIGHT

KENTUCKY hosts VANDERBILT
Florida at Alabama
Georgia at Auburn
LSU at Tennessee
Miss. State at Ole Miss

FEBRUARY 22

Texas A&M at LSU

FEBRUARY 25

KENTUCKY at MISS. STATE
Alabama at Auburn
Florida at Vanderbilt
Tennessee at Georgia
Ole Miss at LSU

FEBRUARY 28

Vanderbilt at Alabama
Auburn at Tennessee
Florida at Miss. State
Georgia at Ole Miss

MARCH 1

KENTUCKY hosts LSU

MARCH 4-7

SEC Tournament at Birmingham

RADIO'S TOP EARLY LINE ON SPORTS
FROM TOP SPORTSCASTERS
WIN ELLIOT AND JIM KELLY
MON-FRI 6:54 AM

**SPORTS WORLD
ROUNDUP**

LISTEN...HERE!

TOP SPORTS REPORTERS
MON-FRI 5:25 PM BRENT MUSBURGER
SAT-SUN 11:08 PM HOWARD DAVID

**SPORTS
TIME**

LISTEN...HERE!

DEFINITIVE WRAP-UPS ON ALL THE
GAMES PEOPLE PLAY EACH WEEKEND.
WIN ELLIOT PRESIDING
SATURDAY 7:06 PM, SUNDAY 7:06 PM

**Weekend
Worldwide
Sports**

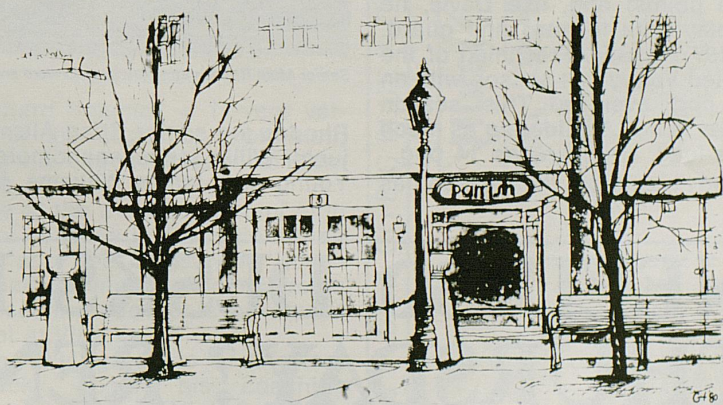
LISTEN...HERE!

TEN TIMES A WEEKEND,
ALL THE UPDATES AND ACTION FROM
WIN ELLIOT AND CBS RADIO SPORTS.
SAT: 1:25 PM, 2:25 PM, 3:25 PM, 4:25 PM,
5:25 PM SUN: 1:25 PM, 2:25 PM,
3:25 PM, 4:25 PM, 5:25 PM

**SPORTS
CENTRAL USA**

LISTEN...HERE!

63LAP
A CBS NETWORK AFFILIATE



purely, & simply...

parrish

at Patchen Village...fine clothing for men & women!

OUTLOOK

Short-handed Commodores Can Score

The Vanderbilt Commodores of Coach Richard Schmidt have had problems this season. However, scoring has not been one of them.

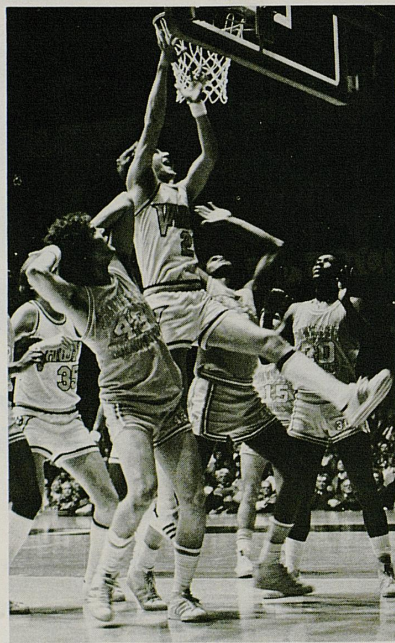
Last season, Vandy led the SEC in scoring (79.3 ppg). This year, the Commodores are second to conference-leading LSU with an even better average (79.7 ppg). Vanderbilt sharpshooters are hitting a fine 52.2% from the field, again second behind LSU.

Providing the firepower is the senior forward tandem of Charles Davis and Mike Rhodes—nicknamed "Town and Country." Davis, a 6-7, 215-pound jumping jack, is coming off a redshirt season. He sat out all but one game with tendonitis in his ankle. An All-SEC pick in 1978-79, Charlie D led his team in shooting, scoring and rebounding that season. This season, Davis is averaging 15.2 ppg while shooting 55.5% from the field.

Mike Rhodes is fourth on the Commodore all-time scoring list (1,406 points) and, like Davis, he can play both forward and guard. The 1977-78 SEC Freshman of the Year led Vandy last season with an 18.4 ppg average. This season Rhodes is not shouldering as much of the load. He averages 14 ppg.

Vandy's strength this season has

been at forward where Schmidt has 10 men capable of playing on the front line. Joining Davis and



Senior Mike Rhodes can play both forward and guard.

Rhodes are senior Brian Allsmiller, junior Willie Jones, sophomore Ted Young and James Williams, junior

transfer John Derenbecker, and three freshmen.

Allsmiller was the valuable sixth man last year (6.8 ppg) and he has seen even more playing time this season. Jones, who started 18 games at center after transferring from hometown Buffalo State, aided Vandy's rebounding effort in Davis' absence. He leads the SEC in field goal percentage with 69.8%. Young, a 6-8 strongman from Clarksville, TN., started 25 games as a freshman last year, leading the team in rebounding and finishing to Rhodes in scoring.

Sophomore leaper Jimmy Gray (6-1) has been playing point guard this season and currently is sixth in assists in the SEC (3.9 apg). Al Miller, a talented freshman from Louisville Ballard High School, perhaps has been the biggest surprise for the Commodores. The 6-6 forward-guard is averaging 14.3 ppg and ranks 11th in assists in the conference.

Earlier this season, Kentucky dominated Vandy 78-64 in Nashville.

Just this week Coach Schmidt suspended Davis and Gray for two games so the Commodores have one more obstacle to overcome tonight.

NEED 30 DESKS BY THURSDAY? RENT THEM!

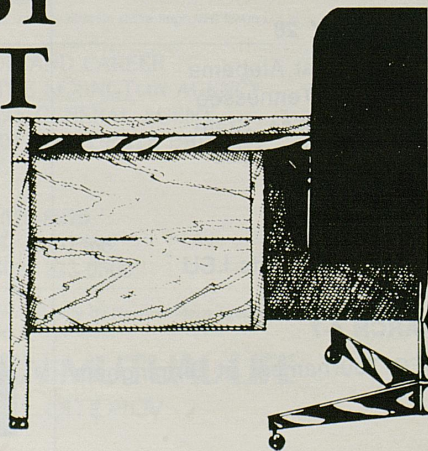
CORT

Furniture Rental

195 Moore Drive
Lexington, Kentucky 40503
606/276-1426

Rent handsome furniture for one office or an entire department. At CORT you can. Our short and long term leases all include a purchase option and design assistance. And rental payments are tax deductible. Whether it's one desk or thirty, if you need it by Thursday... call CORT.

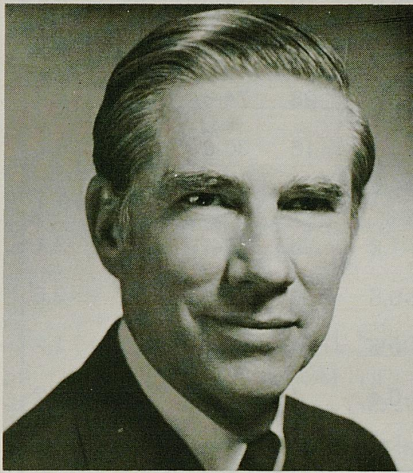
WE'RE READY
TO DO BUSINESS
WHEN YOU ARE.





VANDERBILT UNIVERSITY

Kneeling: Team managers Billy Wheeler, Earl Carter and James Parker. Standing: (From left), Head coach Richard Schmidt, assistant coach Bob Lindsay, Doug Weikert, Al McKinney, Al Miller, James Williams, Ted Young, Willie Jones, Jeff Turner, Brian Allsmiller, John Derenbecker, Charles Davis, Kevin Linder, Mike Rhodes, Jimmy Lenz, Jimmy Gray, assistant coach Don Bostic, and assistant coach Dale Clayton.

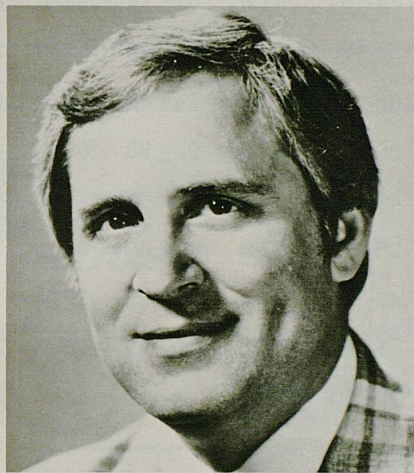


ALEXANDER HEARD
University Chancellor

Chancellor Heard enters his 18th year at Vanderbilt. Arriving in 1963 as a noted author and political scientist, Heard also brought with him a wealth of experience in public service. In 1961-62 he served as chairman of President Kennedy's Commission on Campaign Costs. President Johnson appointed him to the National Citizens' Committee for Community Relations and the Task Force on Education as well as the Advisory Committee on Intergovernmental Relations.

In 1969 President Nixon appointed him to the Commission on White House Fellows, the Task Force on Priorities in Higher Education and as special advisor on campus affairs.

He is a 1938 graduate of the U. of North Carolina and earned the M.A. and Ph.D. from Columbia University.



RICHARD SCHMIDT
Head Coach

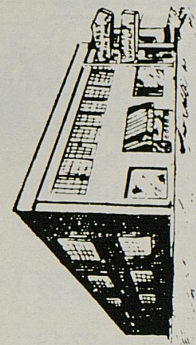
Richard Schmidt, a 14-year veteran of the coaching profession, enters his second season at Vanderbilt.

One of the most successful high school coaches in the nation three years ago, the 38-year-old Louisville native joined the Commodores after serving two years as an assistant at Virginia.

The 1964 graduate of Western Kentucky began his coaching career at Westport High School in Louisville, moving on to coach at Ballard where for the next seven years, that school enjoyed great success. Twice voted Kentucky's outstanding high school coach and three times named Louisville Coach of the Year, Schmidt led his teams to six consecutive district titles and the 1977 state championship.

In all, Schmidt sent 21 players to college on full athletic scholarships, including Jeff Lamp and Lee Raker of Virginia and Jerry Eaves of Louisville.

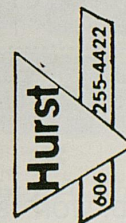
GO BIG BLUE * GO BIG BLUE



Office Supplies and Printing
257-263 East Short Street

From one professional
... to another

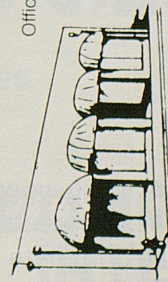
"BACK THE CATS!"



Lexington, Kentucky

"FREE"
CONVENIENT
PARKING

Office Furniture
and
Interior
Design



"The Building with the Yellow Awning"
333 East Short Street

GO BIG BLUE * GO BIG BLUE

Statistics

1980-81 UNIVERSITY OF KENTUCKY BASKETBALL STATISTICS

(Twenty-Two Games)

PLAYER	G-ST	MIN	FG-FGA	PCT	FT-FTA	PCT	REB-AVE	A	PF-D	PTS	AVE
BOWIE	22-22	711	158-296	53.4	95-132	72.0	208-9.5	26	58-0	411	18.7
MINNIEFIELD	22-22	688	87-161	54.0	39- 44	88.6	59-2.7	121	59-4	213	9.7
HORD	22-19	580	84-199	42.2	43- 55	78.2	69-3.1	38	46-0	211	9.6
COWAN	20-16	429	64-154	41.6	51- 72	70.8	81-4.0	16	55-3	179	9.0
MASTER	21- 3	401	50-109	45.9	41- 48	85.4	22-1.0	21	35-0	141	6.7
HURT	22-17	531	58- 99	58.6	24- 39	61.5	101-4.6	28	74-6	140	6.4
VERDERBER	13- 9	264	30- 57	52.6	20- 30	66.7	49-3.8	16	30-0	80	6.2
TURPIN	22- 0	315	42- 79	53.2	28- 39	71.8	90-4.1	1	45-1	112	5.1
BEARUP	12- 0	228	25- 66	37.9	12- 19	63.2	37-1.8	8	32-1	62	3.1
BEAL	22- 2	260	19- 47	40.4	20- 35	57.1	12-0.5	36	33-2	58	2.6
LANTER	8- 0	28	5- 10	50.0	0- 2	00.0	5-0.6	4	7-0	10	1.2
GETTELFINGER	5- 0	15	1- 1	100.0	4- 7	57.1	2-0.4	1	4-0	6	1.2

KY. TOTALS	22		623-1278	48.7	377-522	72.2	787-35.8	316	478-17	1623	73.8
OPPONENTS	22		516-1182	43.7	350-490	71.4	705-32.0	266	484-15	1382	62.8

SEASON RECORD: WON 18, LOST 4.

Quick Copy Service, Inc.

"The Express Printer"

254-5716

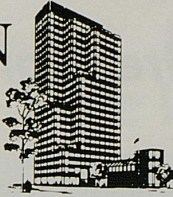
- Multi-page Duplicating
- Architects and Engineering Specs
- Complete Bindery Services
- Color Brochures
- Stationery
- Carbonless Forms

FAIR PRICES — GOOD QUALITY — EXCELLENT SERVICE

1485 ALEXANDRIA DRIVE

LEXINGTON, KENTUCKY 40504

**LEXINGTON
INSURANCE
AGENCY, INC.**



KINCAID TOWERS, 300 W. VINE ST., SUITE 810
LEXINGTON, KENTUCKY 40507
P.O. BOX 966 40588
(606) 253-6570



Auto • Homeowners
Commercial Property
Boat • Aircraft • Life
Health & Accident • Bonds

—INSURING LEXINGTON'S FINEST—

Jim Fightmaster
President

Dick Reilly
Vice President

Larry Reesman
Vice President

Betty Ann Oakes
Vice President

Sleepy Head
HOUSE

418 West Short Street
ACROSS FROM THE OPERA HOUSE
(Side Entrance)

Featuring
FINE HOME FURNISHINGS
SEALY AND SERTA BEDDING



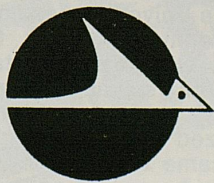
"Where People Shop For Quality And Don't Mind Paying A Little Less[®]"

**OFFICE
FURNITURE
AND SUPPLIES**

931 WINCHESTER RD.
LEXINGTON
255-9585

**CARDINAL
OFFICE
SYSTEMS**

OPEN PLAN SYSTEMS
FURNITURE & ACCESSORIES
CARPET & DRAPERY



576 E. MAIN ST.
FRANKFORT
875-3300

**COMPLETE
INTERIOR
DESIGN**

University of Kentucky: Great and Growing

Truly one of the leading land grant institutions in the nation, the University of Kentucky has a national and international reputation in such diverse fields as medicine, business, engineering, law and agriculture.

More than 22,000 students are enrolled on the main campus in Lexington. Another 17,000 students are enrolled at the 13 community colleges operated by UK across the state at Ashland, Henderson, Cumberland, Elizabethtown, Prestonsburg, Hopkinsville, Somerset, Louisville, Paducah, Hazard, Maysville, Madisonville and Lexington.

UK has a graduate school and 17 academic colleges . . . Arts and Sciences, Agriculture, Engineering, Business and Economics, Education, Home Economics, Library Science, Social Work, Architecture, Communications, Fine Arts, Law, Medicine, Dentistry, Nursing, Allied Health Professions and Pharmacy.

Kentucky is noted for its research efforts, especially in the fields of energy, tobacco and cancer.

UK's Institute for Mining and Minerals Research is a national leader in energy-related research, especially in the areas of coal liquefaction and gasification.

Kentucky's Tobacco and Health Research Institute is a world-wide leader in research on the problems of tobacco and health.

The UK College of Agriculture has been responsible over the years for the development of 80 percent of the burley tobacco varieties grown anywhere in the world, and its research on tobacco diseases has saved farmers millions of dollars.

Scientists at UK did much to save Kentucky's thoroughbred horse industry a few years ago when a dreaded disease, called contagious equine metritis (CEM), struck the industry. Horse vaccines developed at Kentucky for horses are being used all over the world.

UK has an outstanding faculty with some of the top teachers and researchers in the nation. The Kentucky mathematics department has seven faculty members who have been awarded the prestigious



Sloan Fellowship, and the Political Science department consistently ranks among the top such departments in the nation in the number of scholarly papers published.

In the arts, close to 100,000 people attend the many art, music and theatre productions at UK. The Kentucky Marching Band is one of the best collegiate contingents in the country, and the UK orchestra, chorus, theatre and opera offer sterling performances throughout the year.

A real boon to the arts at Kentucky was the opening of UK's new Center for the Arts. The building contains a 400-seat recital hall, a 1,500-seat concert hall and the 20,000 square foot University of Kentucky Art Museum.

UK's Albert B. Chandler Medical Center has a wide range of programs in education and research. In addition to its 20-year mission as a major teaching and research center, the facility serves as a medical complex for the Lexington community and a regional center for the Commonwealth.

The Medical Center offers, through direct patient care or referral, more than 40 services ranging from primary care and family practice to highly specialized areas such as open heart surgery, renal transplants and cancer treatment.

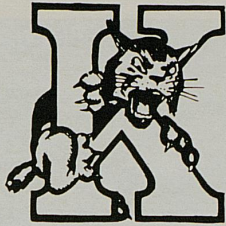
The five colleges of the Medical Center—Medicine, Dentistry, Nurs-

ing, Pharmacy and Allied Health — have more than 2,000 students pursuing bachelor, masters and doctoral degrees in health-related fields. Extramural funding in support of teaching, research and public service has more than doubled in the past 10 years to some \$11.4 million in 1979.

Of major significance in the area of medical research is the recent opening of the Sanders-Brown Research Center on Aging, one of the first facilities of its kind in the nation. The building, made possible by a matching grant from the John Y. Brown, Jr. Foundation, will enable UK scientists and researchers to study the biological aspects of aging with the ultimate goal of improving the quality of life for the elderly.

School spirit is on a continuous high at UK. The 1979-80 cheerleading squad was judged the second best collegiate cheerleader in the nation. The Kentucky band receives standing ovations wherever it appears.

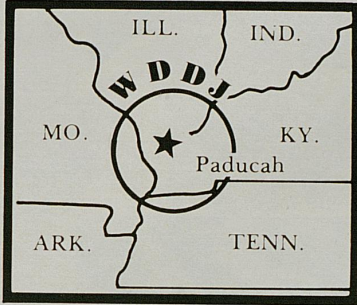
The University has had only eight presidents since its founding in 1865. Dr. Otis Singletary, now in his 12th year as UK president, is a history scholar and nationally-recognized university administrator. He came to Kentucky from Texas where he served as executive vice chancellor for academic affairs of the University of Texas system.



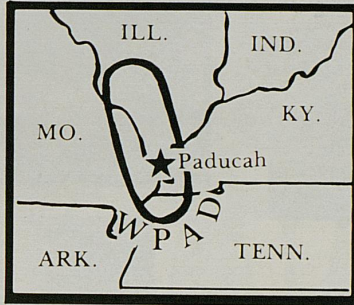
**Hear
the Wildcats!**
IN PADUCAH AREA

WDDJ FM-97

WPAD AM-1560



100,000 Watts All Hours



10,000 Watts Days (1000 Nights)

PADUCAH BROADCASTERS, INC.

Edward B. Fritts - President & General Manager

P.O. Box 450 • Paducah, Kentucky 42001 • (502) 442-8231

Nobody...does...it...better..

**fast
free...
delivery**

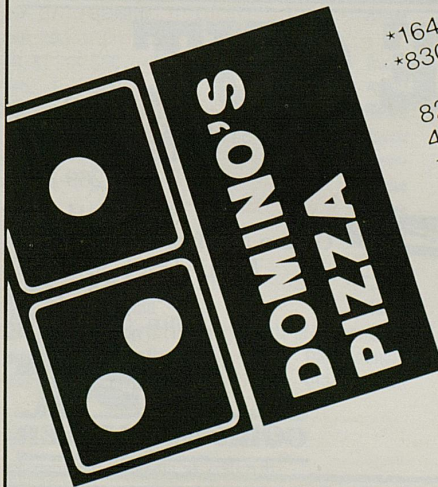
*1641 Nicholasville Rd., 276-4437
*830 Euclid Ave., 269-9655

820 Lane Allen Rd., 276-4376
470 New Circle Rd., 252-4941
1392 Trent Blvd., 272-9612
169 E. Reynolds Rd., 273-4626
3301 Clays Mill Rd., 276-1540

*U. of K. campus delivery.

Free 30 minute delivery
and 10 minute pick-up
service.

Limited delivery areas
©1980, Domino's Pizza



009673/1402-7

Call
252-1557

or
Winchester

744-4785

And

Discover

Rees Printing

- Printing
- Office Supplies
- Office Furniture

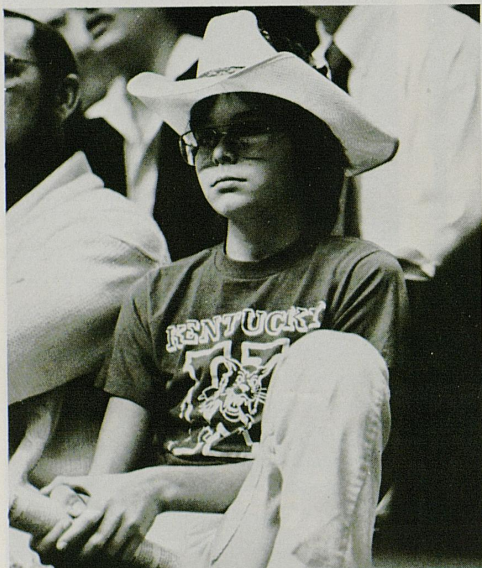
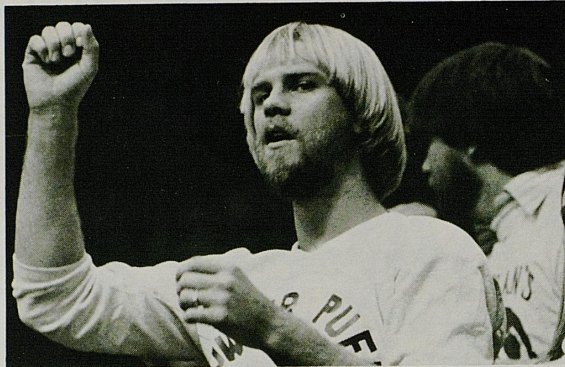


Rees

10 Court Street
Winchester, Ky. 40391

Faces in the Crowd

Photos by Bill Straus



CALL FOR A TIME OUT

Where the action is!

Enjoy the casual comfort of Cork 'N Cleaver after the game or any time!

Specializing in choice aged steaks, delicious seafood, and a garden fresh salad bar, all prepared with careful attention for your dining enjoyment.



2750 Richmond Rd.
Lexington, Ky.
269-3644

Serving Hours:
Game Nights 5:30 - 12:00
Mon. - Fri. 5:30 - 11:00
Sat. 5:30 - 12:00
Sun. 5:00 - 10:00


CORK 'N CLEAVER

1980-81 LADY KATS



1980-81 Lady Kats, left to right seated: Beth Kogoy, Lynette Lewis, Lori Edgington, Patty Jo Hedges, Lea Wise, Lisa Collins. Standing: Trainer Mimi Porter, Coach Terry Hall, Kathy Lokie, Maria Donhoff, Jody Runge, Liz Lukschu, Valerie Still, Tayna Fogle, Assistant Coach Dorothy Berry, Graduate Assistant Margaret LaFontaine.

Schedule

Dec. 1	U. of Charleston	Home
Dec. 4	Cincinnati	Home
Dec. 6	Indiana	Away
Dec. 10	Murray	Away
Dec. 13	Carson Newman	Rupp Arena
Jan. 1	Morehead	Home
Jan. 3	Murray	Home
Jan. 6	Northern	Home
Jan. 8	Louisville	Away
Jan. 11	Rutgers	Away
Jan. 13	Western	Away
Jan. 16	L.K.I.T.	Home
Jan. 17	L.K.I.T.	Home
Jan. 22	Tennessee at Chattanooga	Home
Jan. 24	South Carolina	Home
Jan. 27	Eastern	Away
Jan. 29		
30, 31	SEC	Away
Feb. 1	SEC	Away
Feb. 3	Eastern	Home
Feb. 6	Tennessee-Knoxville	Away
Feb. 10	Northern	Away
Feb. 14	Louisville	Home
Feb. 16	Western	Home
Feb. 21	Morehead	Away
Feb. 26,		
27, 28	K.W.I.C. Play-offs	T.B.A.
Mar. 2	Marshall	Home
Mar. 10	Region II (1st round)	Site of Higher Seed
Mar. 13	Region II	Old Dominion
Mar. 14	Region II	Old Dominion

2:00 p.m. games—Memorial Coliseum

All home games begin at 7:30 p.m.

Rupp Arena game—5:00 p.m.

University Of Kentucky Lady Kats Roster

NO.	NAME	POS.	CLASS	HEIGHT	WEIGHT	HOMETOWN
10	Lisa Collins	F	FR	5-9	135	Corbin
12	Valerie Still	F-C	SO	6-1	159	Kansas City, MO.
13	Patty Jo Hedges	G	SO	5-7	127	Louisville
14	Lea Wise	G	SO	5-7	138	Lexington
21	Maria Donhoff	F	SR	5-11	164	Louisville
22	Kathy Lokie	G-F	FR	5-11	138	Chesapeake, VA.
32	Lori Edgington	G	SO	5-8	132	Covington
40	Lynette Lewis	F	FR	5-9	159	Loyall
41	Jody Runge	C	FR	6-2	166	Waukon, IA.
43	Beth Kogoy	G	FR	5-10	146	So. Charleston, WV
53	Liz Lukschu	C	SR	6-4	181	Owensboro
55	Tayna Fogle	F	JR	5-10	196	Lexington

Head Coach: Terry Hall Assistant Coach: Dorothy Berry

TERRY HALL

Head Basketball Coach

Arriving at the University of Kentucky after an impressive five-year stint at the University of Louisville, Terry Hall looks forward to the challenge of becoming women's basketball coach at UK. She brings with her substantial experience in various levels of women's sports.

Hall, the Cardinals' first full-time women's basketball coach, compiled a 79-53 record at U of L. She directed all aspects of the Louisville program, including scheduling, recruiting, preparing the budget and supervising the athletes' housing. Last season she guided the Cardinals to their first Metro Conference championship and a 17-17 record, defeating highly respected Memphis State in the pre-season tournament finals.

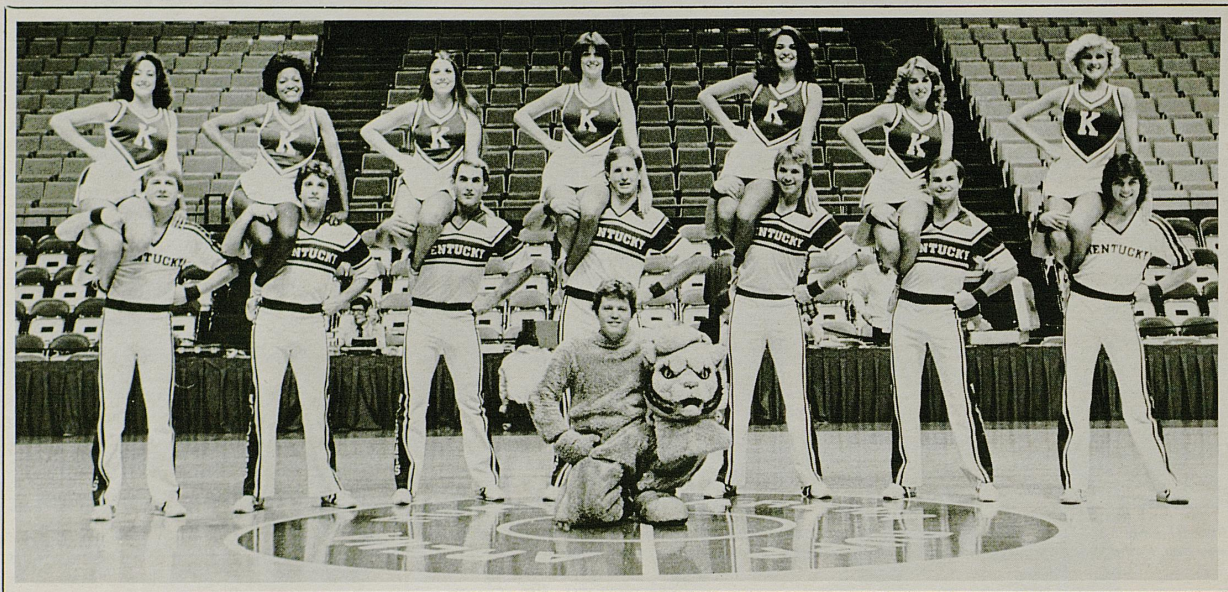
Her 11-year coaching career began at Butler High School in Louisville. Her first coaching assignment at the collegiate level was at Eastern Kentucky University. In addition to her coaching duties, Hall is the chairperson of both the Southern Region II Sports Committee and the KWIC Division Basketball Committee. Earlier this year she



was nominated to the National Basketball Committee and the Outstanding Young Women of America.

Hall graduated from Indiana State University in 1966 with a degree in Health and Physical Education. She earned a Master's degree in P. E. from Eastern in 1974.

UK Cheerleaders



The 1980-81 University of Kentucky cheerleaders. Left to right: Tomi Anne Blevins (alternate), Tim Hudson, Jennifer Parks, Greg Medley, Paula Sumner, Lee Ackiss, Sandra Burton, Mark Wingate, Mona Wilson, Jeff Fossett, Leslie Davis, Jimmy Mortimer, Barbara Betts, Jeff Collins (alternate). Front: Ralph McBarron, wildcat.

Alan Malott

What's Number Two in the nation and Number One in the hearts of all Kentucky Wildcat fans? The unanimous choice is the University of Kentucky Wildcat cheerleaders!

The 1979-80 squad finished second behind Indiana State in the National Collegiate Cheerleading Championship held in Los Angeles.

The competition was broadcast nationwide last spring on network television.

The UK cheerleaders are practicing a "new look" for the 1980 basketball season. Because of Southeastern Conference regulations restricting cheerleader routines, the Wildcats will be building smaller pyramids but creating more

entertaining and crowd-pleasing routines.

New this year to the squad is the UK Wildcat, **Ralph McBarron**, a senior majoring in marketing from Louisville.

This season's spirited squad includes eight persons from last year's championship team, plus six newcomers.



Coach Joe B. Hall

Eat, Sleep and Dream Basketball — "WILDCAT STYLE"
at the Seventh Annual

KENTUCKY WILDCAT BASKETBALL CAMP

1981 Summer Sessions

June 14-19 June 21-26

June 28-July 3

For Free Brochure Write:
Kentucky Wildcat Basketball Camp
Memorial Coliseum
University of Kentucky
Lexington, Ky. 40506
or Phone (606) 257-1916



**We Back
the Cats!**

**STANLEY
STEEMER®** CARPET
CLEANER

- No hassle with bulky do-it-yourself machines
- No need to lift heavy furniture
- We move all furniture free
- Clean upholstery

266-1142

When you schedule a carpet cleaning, tell us you "Back the Cats" and receive an "I Back the Cats" t-shirt free.

(Franchises Available)



Meidinger

**Compensation
and
Benefit
Services**

Experienced. Dependable. Innovative. Meidinger provides the highest quality compensation, benefit and actuarial services, and is an innovator in helping employers find solutions to complex benefit and compensation problems.

Meidinger, Inc.
Corporate Offices:
2440 Grinstead Drive
Louisville, Kentucky
40204
502/499-1240

Offices:
Atlanta
Baltimore/Washington
Birmingham
Boston
Charlotte
Chicago
Cincinnati
Cleveland
Dallas
Indianapolis
Kansas City
Louisville
Memphis
Metro New York
Milwaukee
Philadelphia
Pittsburgh
Richmond

Uncork Yourself Tonight



Let your natural effervescence flow and uncork those bottled up feelings. Tonight come and enjoy a great evening of fun at the LIBRARY.

LIBRARY

Woodland at Euclid Avenues
The Place Where Things Happen!

UK Records

INDIVIDUAL CAREER RECORDS (Varsity Play)

Most Points—2138 by Dan Issel in 83 Games, 1968-70
(Conference Play Only—1399 by Dan Issel in 54 Games, 1968-70)

Highest Scoring Average—25.7 by Dan Issel, 1968-70
(Conference Play Only—25.9 by Dan Issel in 54 Games, 1969-70)

Most Games Played—139 by Ralph Beard, 1945-49
(Conference Play Only—74 by Truman Claytor, 1976-79)

Most Consecutive Games Started—120 by Alex Groza, Nov. 28, 1946 to March 26, 1949
(Conference Play Only—54 by Dan Issel and Mike Pratt in 1968-70, Jack Givens, 1975-78)

Most Field Goals Attempted—1638 by Jack Givens, 1975-78
(Conference Play Only—1059 by Dan Issel, 1968-70)

Most Field Goals Made—843 by Jack Givens in 123 Games, 1975-78
(Conference Play Only—546 by Dan Issel in 54 Games, 1968-70)

Highest FG Pct.—58.1 by Rick Robey in 105 Games, 1975-78
(Conference Play Only—57.3 by Rick Robey in 58 Games, 1975-78)

Most Free Throws Attempted—661 by Dan Issel in 83 Games, 1968-70
(Conference Play Only—405 by Dan Issel in 54 Games, 1968-70)

Most Free Throws Made—488 by Dan Issel in 83 Games, 1968-70
(Conference Play Only—307 by Dan Issel in 54 Games, 1968-70)

Highest FT Pct.—89.0 by Kyle Macy in 98 Games (331-372), 1978-80
(Conference Play Only—88.2 by Kyle Macy (224-254) in 61 Games, 1978-80)

Most Rebounds—1078 by Dan Issel in 83 Games, 1968-70 (No Rebounds kept prior to 1951)
(Conference Play Only—685 by Dan Issel in 54 Games, 1968-70)

Best Rebound Average—16.1 by Bob Burrow in 51 Games, 1955-56
(Conference Play Only—17.5 by Bob Burrow in 30 Games, 1955-56)

Most Assists—470 by Kyle Macy in 98 Games, 1978-80

Most Personal Fouls—344 by Mike Phillips, 1975-78 (Four Seasons)
(For 3 Seasons—294 by Pat Riley, 1965-67)

INDIVIDUAL RECORDS (Season)

Most Points — 948 by Dan Issel in 28 Games, 1969-70
(Regular Season Only—876 by Dan Issel in 26 Games, 1969-70)
(Conference Play Only—612 by Dan Issel in 18 Games, 1969-70)

(Soph. Year—608 by Cotton Nash in 26 Games, 1961-62)

Highest Scoring Average—33.9 by Dan Issel in 28 Games, 1969-70
(Regular Season Only—33.7 by Dan Issel in 26 Games, 1969-70)
(Conference Play Only—34.0 by Dan Issel in 18 Games, 1969-70)

(Soph. Year—23.4 by Cotton Nash in 1961-62)

Most Rebounds—528* by Cliff Hagan in 32 Games, 1951-52
(Regular Season Only—447 by Bill Spivey in 25 Games, 1950-51)
(Conference Play Only—250 by Cliff Hagan in 14 Games, 1951-52)

Most FG Attempts—667 by Dan Issel in 28 Games, 1969-70
(Regular Season Only—614 by Dan Issel in 26 Games, 1969-70)
(Conference Play Only—433 by Dan Issel in 18 Games, 1969-70)

*Also Southeastern Conference Record
†Recognized As National Record

Most Field Goals Made—369 by Dan Issel in 28 Games, 1969-70
(Regular Season Only—339 by Dan Issel in 26 Games, 1969-70)
(Conference Play Only—239 by Dan Issel in 18 Games, 1969-70)

Most Free Throws Attempted—275 by Dan Issel in 28 Games, 1969-70
(Regular Season Only—259 by Dan Issel in 26 Games, 1969-70)
(Conference Play Only—169 by Dan Issel in 18 Games, 1969-70)

Most Free Throws Made—210 by Dan Issel in 28 Games, 1969-70
(Regular Season Only—198 by Dan Issel in 26 Games, 1969-70)
(Conference Play Only—134 by Dan Issel in 18 Games, 1969-70)

(Consecutive—32 in 12 games by Kyle Macy (5 games 1978-79 and 7 games 1979-80)

Highest Field Goal Pct.—63.5 by Rick Robey in 32 Games, 1977-78
(Regular Season Only—62.5 by Rick Robey in 27 Games, 1977-78)
(Conference Play Only—64.7 by Rick Robey in 18 Games, 1977-78)



•423 Southland Dr.
Lexington, Ky. 40503
(606) 276-4497

•Mall at Civic Center
Lexington, Ky. 40507
(606) 255-1702



BRING HOLLYWOOD'S BEST MOVIES HOME JOIN THE VIDEO VILLAGE MOVIE CLUB

Now you can enjoy your favorite movies whenever and with whomever you wish to view them. Video cassette movies are uncut, uncensored, without commercial interruptions, exactly as presented in first run theatres.

Video Village offers an unbelievable selection of the finest motion pictures ever produced: major feature movies, all-time classics, cartoons, sporting events, educational films, etc. Some for the kids, some NOT for the kids.

Call or write now about our movie club or any of your other video needs.

If we are not in your area now . . . watch for us soon.

UK Records

(Continued)

INDIVIDUAL RECORDS—SEASON

Highest Free Throw Pct.—91.8 by Larry Steele in 23 Games, (45-49) 1969-70 (Regular Season Only—92.2 by Kyle Macy in 30 games, (94-101) 1979-80 (Conference Play Only—90.9 by Kent Hollenbeck in 12 Games (40-44) 1970-71 Most Assists—178 by Kyle Macy in 32 Games, 1977-78

Single Game

Most Points—53 by Dan Issel (Against Mississippi at Oxford, Feb. 7, 1970)
Most Field Goals Attempted—42 by Bill Spivey (Against Ga. Tech Feb. 18, 1950. Made 16)
Most Field Goals Made—23 by Dan Issel (Against Mississippi at Oxford, Feb. 7, 1970)
Most Free Throws Attempted—24 by Cliff Hagan (Against Temple, Dec. 5, 1953)
Most Free Throws Made—18 by Dwight Anderson (Against Miss. State, Feb. 12, 1979) Attempted 23.
Consecutive Free Throws Made—16* by Cliff Hagan (Against Mississippi, Jan. 2, 1952)
Highest Field Goal Percentage (Min. 10 Made)—Rick Robey 91.7 (11 of 12) against Miami (O.) (H) Dec. 10, 1975, Jack Givens 91.7 (11 of 12) against Miss. State (A) Jan. 31, 1977
Highest Free Throw Percentage (Min. 10 Made)—1.000 by Louie Dampier (13 of 13 against Florida, Jan. 30, 1965, and 14 of 14 against Oregon State Dec. 22, 1966) 11 other players have 15—1.000% performances. (Min. 15 made)—.944 (17 of 18) by Cliff Hagan against Mississippi, Jan. 2, 1952)
Most Rebounds—34* (SEC non-conference record) by Bob Burrow (Against Temple, (H) Dec. 10, 1955)
Conference Play Only—30 by Cotton Nash (Against Mississippi (H) Feb. 8, 1964)

NCAA TOURNAMENT RECORDS

Most Appearances—24† (1942, 1945, 1948, 1949, 1951, 1952, 1955, 1956, 1957, 1958, 1959, 1961, 1962, 1964, 1966, 1968, 1969, 1970, 1971, 1972, 1973, 1975, 1977, 1978, 1980)
Most Points—4958 in 65 Games
Most Games—65†

MISCELLANEOUS RECORDS

Season Opener Consecutive Wins—34 (Kentucky lost first opening game since 1926 in defeat by Va. Tech, Dec. 1, 1962)
Consecutive Home Floor Wins—129† (Jan. 4, 1943 to Jan. 8, 1955) (First 84 wins in Alumni Gym, remainder in Memorial Coliseum) (Conference Play Only—70 from Jan. 21, 1939 to Jan. 8, 1955) (Overall since 1943, Kentucky has been defeated on its home floor only 40 times) (Most losses at home one season—7 in 1966-67)
Longest Winning Streak—32 (Dec. 5, 1953 to Jan. 8, 1955)

* Also Southeastern Conference Record

† Recognized as National Record

WILD!



Show the world you're a Wildcat booster. With exciting wildcat jewelry. Choose men's or ladies' rings or pendants. All of gleaming vermeil set

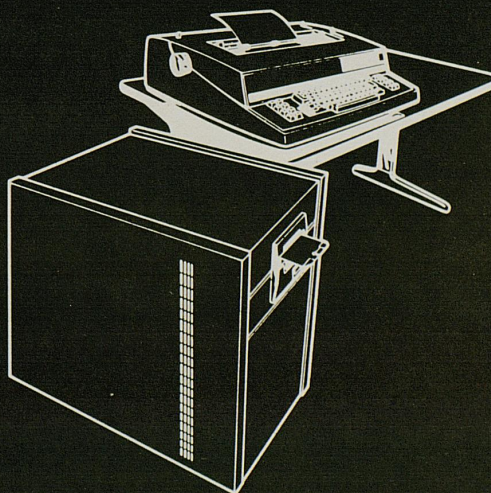
with genuine rubies, diamonds and sapphires. They look like a million. Men's ring, \$95; ladies' ring, \$85; pendant, \$75. Also available in 14K gold. "Go Big Blue!"

LeRoy's Jewelers

- EASTLAND SHOPPING CENTER
- TURFLAND MALL • LEXINGTON MALL • FAYETTE MALL

ABDICK

Copiers
Duplicators
Electronic
Typewriters
Graphic Arts
Supplies
Paper



A.B. Dick Products of Lexington



NCAA Records

ATTENDANCE: LEADING NCAA DIVISION I TEAMS — 1979-80

	G/S	Attend.	Avg.	Change		G/S	Attend.	Avg.	Change
1 Kentucky	15	352,511	*23,501	Up 98	31 Missouri	16	151,359	9,460	Up 2,836
2 Brigham Young	14	300,713	21,480	Up 1,693	32 Texas-El Paso	15	139,390	9,293	Up 188
**3 Indiana	15	251,726	16,782	Up 2,730	33 Texas	17	157,332	9,255	D 6,630
4 Minnesota	19	292,386	15,389	Up 248	34 Nebraska	16	145,626	9,102	D 2,877
5 Vanderbilt	15	228,029	15,202	D 179	35 Western Kentucky	16	145,550	9,097	Up 758
6 Louisville	16	237,198	14,825	Up 776	†‡36 Alabama	14	126,462	9,033	D 2,202
7 New Mexico	18	257,121	14,285	D 2,356	37 North Carolina State	12	108,300	9,025	D 875
8 Illinois	19	271,375	14,283	Up 74	38 Syracuse	13	115,885	8,914	Up 249
9 Purdue	17	234,353	13,785	Up 150	39 Virginia	15	132,304	8,820	D 13
10 Ohio State	14	190,274	13,591	Up 272	40 Clemson	15	130,900	8,727	D 306
11 Iowa	13	173,745	13,365	Up 883	‡41 Arkansas	16	139,277	8,705	D 123
12 Kansas	14	182,330	13,024	D 880	42 Duke	12	102,768	8,564	Up 391
13 Tennessee	14	176,652	12,618	Up 535	43 Drake	15	128,358	8,557	Up 683
14 Louisiana State	14	174,339	12,453	D 259	**44 Oregon	17	143,889	8,464	D 1,400
**15 Oregon State	16	186,443	11,653	Up 2,060	@45 West Virginia	16	132,534	8,283	Up 114
16 Utah	15	173,299	11,553	D 561	46 Virginia Tech	12	98,500	8,208	Up 1,356
17 Arizona	16	181,428	11,339	D 316	47 Toledo	15	122,849	8,190	Up 676
18 Notre Dame	16	180,369	11,273	D 72	48 Oral Roberts	13	106,064	8,159	Up 724
19 UCLA	16	179,481	11,218	D 562	49 Utah State	16	105,220	8,094	Up 17
20 Michigan	15	164,405	10,960	D 3,905‡	50 Indiana State	16	127,972	7,998	D 1,963
21 Kansas State	16	172,682	10,793	Up 680	51 Arizona State	17	135,644	7,979	D 166
22 Dayton	17	183,085	10,770	D 933	52 Providence	16	124,983	7,811	D 178
#23 Marquette	16	170,728	10,671	D 267	†b53 Georgia	16	123,850	7,741	Up 1,334
##24 North Carolina	11	117,247	10,659	D 277	54 Evansville	16	123,760	7,735	D 280
25 Wichita State	18	186,660	10,370	Up 2,304	55 Wisconsin	15	115,960	7,731	D 479
26 Maryland	16	160,815	10,051	D 1,145	£56 Washington State	16	120,954	7,560	Up 34
27 New Mexico State	14	140,513	10,037	Up 1,961	57 Old Dominion	14	103,792	7,414	Up 1,520
28 Michigan State	11	109,440	9,949	D 1,719‡	58 Alabama-Birmingham	15	109,593	7,306	Up 1,188
29 Weber State	17	167,762	9,868	Up 2,055	59 Bradley	16	116,050	7,253	Up 503
30 Memphis State	17	162,892	9,582	Up 1,419	§60 Oklahoma	15	107,993	7,200	Up 26

*All-time national high. **Includes 1g Indianapolis. ***Each 3g Portland. #1g Madison. ##2g Greensboro. †1g Birmingham. ‡2g Little Rock, 2g Pine Bluff. §3g Oklahoma City. @1g Charleston. †b1g Atlanta. £2g Spokane, 1g Pasco. (All 29 teams with 150,000 home listed above). †Michigan State down 55, Michigan 2,184 without Pontiac Silverdome games of 1979 (31,638 for Cincinnati, 37,283 for Notre Dame, respectively).

(800) 292-9492

GATCHEL'S

IMAGE FORMATION SPECIALISTS SINCE 1862

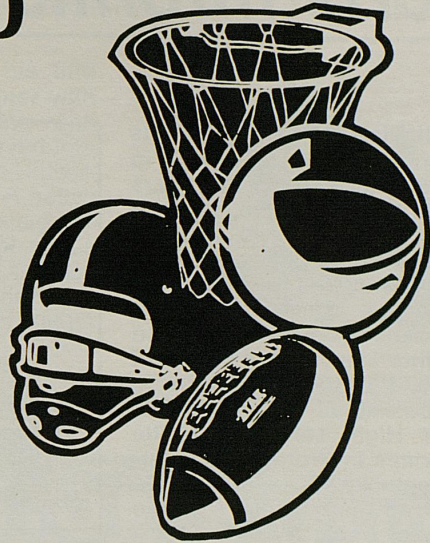
**Equipment and Supplies for Composing, Prepress,
Pressroom, Bindery and Finishing Operations**

W.D. Gatchel & Sons, Inc. 720 E. Market Street Louisville, KY 40202 (502) 582-2631

GET INVOLVED

Teamwork and involvement go hand in hand to build the best athletes and the best teams. It's the same with the best financial institutions, too.

At BC & T, we want you to get involved with our many services because we want you to understand the many different ways we can help. Checking, Savings, Retirement Accounts, The Club, Checkmate...some of the ways BC & T is involved with you.



**BANK OF COMMERCE
and Trust Co.**

Equal Opportunity Lender • Member FDIC
Member Federal Reserve System

318 E. Main Street
720 Euclid Avenue
1975 Harrodsburg Road
2500 Nicholasville Road
252-4971

DEADLINES...

When you print the
NCAA Basketball program, Keeneland programs,
SEC Tournament, U.K. Football
and U.K. Basketball
programs you can't afford
to miss one!

We promise the same dependable
service for your brochure,
magazine, pamphlet,
annual report or business form.

Thoroughbred Press • 904 N. Broadway • Lexington, Ky. 40511 • (606) 252-6681 •



Sports Information

Russell Rice was named sports information director at U.K. in May, 1969, after serving two years as assistant to Ken Kuhn, who retired after more than two decades of service with the University. Rice came to the Wildcats from **The Lexington Leader**, where he was a general reporter eight years and sports editor five years. A native of Paintsville, Ky., he won letters in football, basketball and baseball at Van Lear High, served with the U. S. Marines in World War II, attended Kentucky Wesleyan College and received his bachelor's at the University of Kentucky in 1951.

He has served as manager of the NCAA Mid-East Basketball Tournament (1969), and chairman of the Basketball Hall of Fame Committee of the College Sports Information Directors Association and was recipient of the 1971 Churchmen's "Sportswriter of the Year" award.

As a newspaperman, his duties ranged from agricultural hearings in Washington to spending three



months as the traveling companion to a Kentucky gubernatorial candidate. He reported the activities of such Wildcat teams as football coach Charlie Bradshaw's "Thin Thirty" and "The Runts" of basketball coach Adolph Rupp. He is a former Kentucky area correspondent for **Time - Life - Fortune** magazines and was Kentucky editor of **Tobacco Magazine** and Religious News Service.

For the past 13 years, he has pursued a hobby of researching Kentucky basketball and football. He authored "The Wildcats: A Story of Kentucky Football," and "The Big Blue Machine: A Story of Kentucky Basketball." His latest work is the Kentucky portion of a "History of the Southeastern Conference." He edits the K-Men's Newsletter and has been named an honorary member of that organization. He also was honored by WAVE-TV for "Outstanding Contribution to Televised Sports." He was the first member of the Southeastern Conference Publicity Directors Association to be elected to a two-year term (1977-78) and recently completed his second year as president of the Blue Grass (Kentucky) chapter of the U. S. Harness Writers Association, which was organized in 1977.

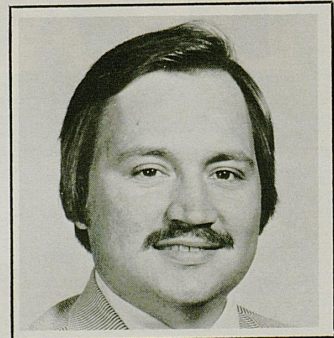
He is married to the former Doris Thacker of Knott County. They have four children — Mrs. Rodney Morris of Louisville, Mrs. Mike Covington of Georgetown, Russell James and Kim of Lexington.

Randy Stacy Assistant Sports Information Director

Randy Stacy joined the sports information staff August 25, 1980, after serving as Sports Information Director at Tennessee Tech. A native of Knott County, KY, Stacy graduated from Carr Creek High School, where he was class valedictorian, and earned a bachelor's

degree in radio-television and journalism from Morehead State University, graduating with honors in 1977.

Stacy's main area of responsibility at UK will be basketball, with additional duties in other sports.

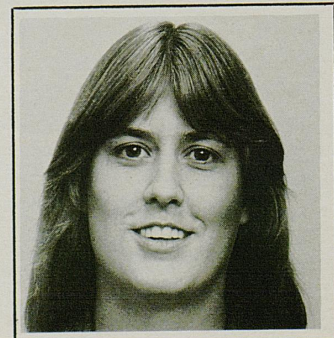


Rena Koier Assistant Sports Information Director

Rena Koier, former reporter for Harlan, Louisville and Lexington daily newspapers, recently was appointed assistant sports information director at the University of Kentucky.

Koier's primary responsibility will be Lady Kat basketball, with administrative duties in the Level III sports, which includes men's and women's non-revenue sports.

A native of Lynch, Ky., Koier graduated from Lynch High School and spent eight months as a sports reporter for the Harlan Daily Enterprise before attending the University of Kentucky and receiving a B.A. in journalism in 1976. After a year with The Courier-Journal, she was a sports reporter and columnist for The Herald-Leader from 1977 until January, 1980.



Athletics Dept. and Trainer

SUE FEAMSTER

Assistant Director of Athletics



Sue joined the athletics association in 1978 with the merger of the men's and women's programs after serving as director of women's athletics since 1974.

The Frankfort native came to UK as a grad student and was named assistant director of campus recreation in 1972. She graduated from Franklin County High School and earned letters in tennis, field hockey, basketball and track from Indiana University and Kentucky State University, where she earned her B.S. degree and graduated with honors.

BOB BRADLEY

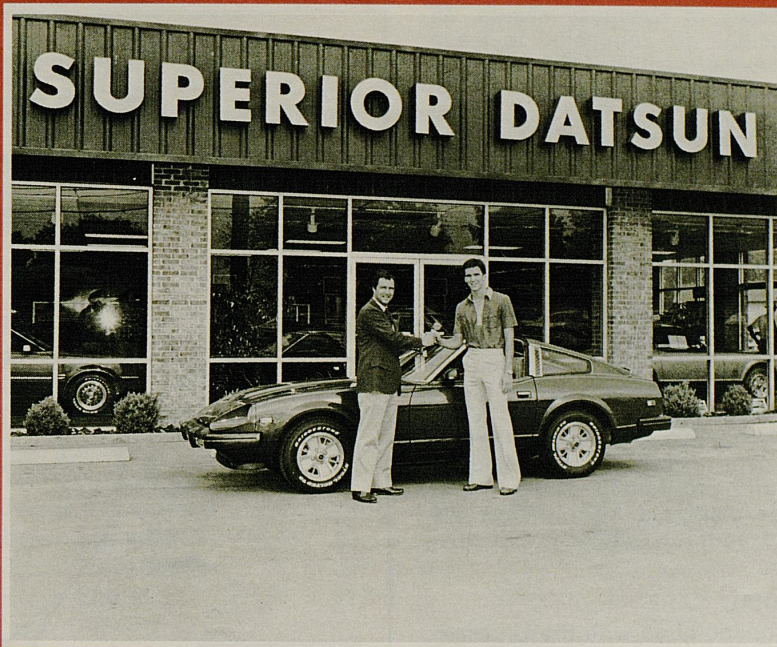
Assistant Director for Academic Affairs



Bob is a native of New York who earned his M.A. at UK before serving as coordinator of counseling and head of finances at the Lexington Technical Institute. He joined the Athletics Association last year. Bob earned letters in football, baseball, basketball and track at Hornell High School (NY) and played football at Salem College in West Virginia.

WALT McCOMBS

Walt McCombs is in his fifth year as assistant trainer with chief responsibilities resting with the basketball team. He served in a similar capacity at Clemson University prior to coming to UK. A native of Belton, S. C. McCombs is a graduate of Parker High School and a 1971 graduate of The Citadel, where he was student trainer for four years. He was assistant trainer at U K in 1972 and 1973.



**KYLE MACY and the NO. 1
Datsun Dealership in Kentucky**

**Superior
Datsun
JAVES**
Just Minutes South Of Fayette Mall

**Nicholasville Road
Ph. 885-3367**

Arena Information

FIRST AID

The University of Kentucky and the Lexington Center provide for your convenience and welfare, a First Aid Station on the Purple Concourse. Persons with any type of chronic medical problem are requested to leave their name and seat location with the nurse on duty at the First Aid Station. A person in need of assistance with a health emergency should report the situation immediately to an usher. For University of Kentucky events, all physicians are requested to leave their name, seat location and any other information required to locate them if they receive an emergency telephone call, at the UK Public Assistance station located on the purple concourse between sections 30 and 31. For all other events in Rupp Arena all physicians are requested to leave their name, seat location and any other information required to locate them if they receive an emergency telephone call at the First Aid Room located on the purple concourse between sections 33 and 34. In the event of an emergency, you will be notified at your seat. In order that the activities and program in Rupp Arena not be disrupted, paging over the public address system is not possible.

CARDIAC CARE

In cooperation with the University Medical Service, the University of Kentucky provides a cardiac resuscitation program at all UK basketball games.

LOST AND FOUND

Lost and found articles should be reported or turned in to an usher or a security officer. You may wish to write to the director of arena security and describe lost articles which will be returned if found.

LIQUORS

Alcoholic beverages are strictly prohibited within the arena as are all food and drink containers including hard surfaced materials of any type, bottles, cans, thermos bottles, ice bags, ice chests, and any object related to above. Arena personnel are instructed to enforce this rule in the interest of safety.

COURT REGULATIONS

Spectators must keep off the court at all times. Spectators must use the arena stairs and vomitories. There are no public facilities located on the arena floor level. Public facilities in Rupp Arena are located on the entry concourse level. You will find all refreshment stands, drinking fountains, public telephones, restrooms, vending machines and first aid on the concourse level.

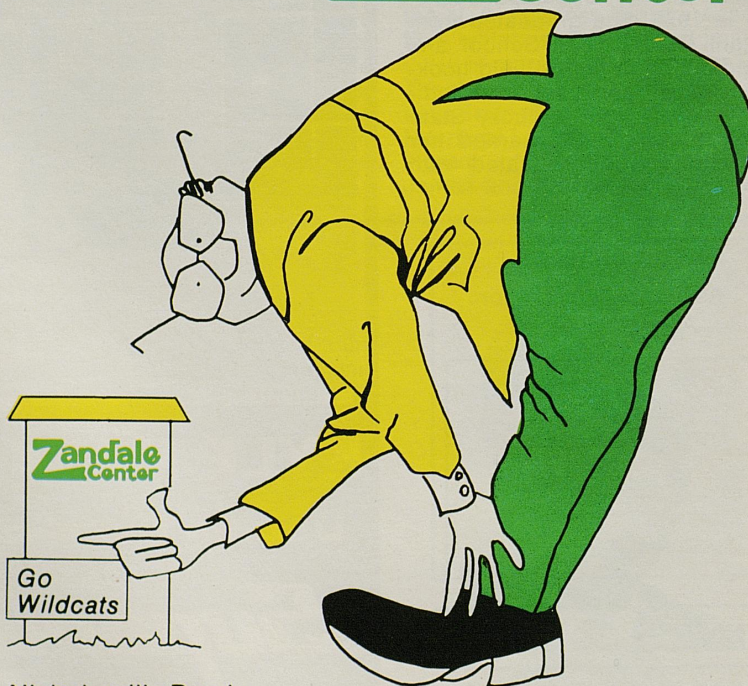
NO HORNS

Horns are not permitted in Rupp Arena and will be picked up at the entrances. Be considerate and allow your neighbor to enjoy the game. Keep portable radios at a low volume.

GATE INFORMATION

Rupp Arena will normally open one hour prior to any scheduled event. Please do not leave the area until the conclusion of an event or game or at halftime if you plan to re-enter. No "Passout" tickets will be issued and you will not be permitted to re-enter.

Spring, Fall, Summer, or
Winter, Find
it all at **Zandale
Center**



Nicholasville Road
25 Great Stores

AIRSTEP FOOTWORKS
ARCADE BEAUTY SALON
BENEFICIAL FINANCE OF KENTUCKY
CAKE BOX BAKERY
D & H CLEANERS
DENNY'S COIN LAUNDRY
FABRIC FAIR
FOWLER & RUE TV
J & J's HOME ACCESSORIES

JACK & JILL SHOPPE
KENNEDY CRAFTS & PLASTERCRAFTS
MONFRIED OPTICAL COMPANY
SHIRLEY'S INC.
SOL'S SHOE REPAIR
TALL & BIG MEN'S SHOP
THE THIMBLE
WAREHOUSE FOODS
ZANDALE PHARMACY

Zandale Merchants Association, Inc.

UNIVERSITY OF KENTUCKY



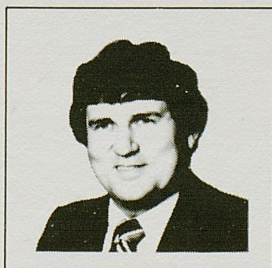
No.	Name	Pos.	Cl.	Ht.	Wt.	Hometown
10	Dirk Minniefield	G	So.	6-3	180	Lexington
11	Dicky Beal	G	Fr.	5-11	170	Covington
12	Bo Lanter	G	Jr.	6-1	175	Versailles
15	Chris Gettelfinger	G	Sr.	6-2	185	Knoxville, Tn.
20	Jim Master	G	Fr.	6-4	170	Ft. Wayne, In.
24	Bret Bearup	F	Fr.	6-9	230	Centerport, N. Y.
31	Sam Bowie	C	So.	7-1	235	Lebanon, Pa.
32	Derrick Hord	G-F	So.	6-6	215	Bristol, Tn.
34	Chuck Verderber	F	Jr.	6-6	225	Lincoln, Il.
40	Fred Cowan	F	Sr.	6-8	225	Sturgis
44	Charles Hurt	F	So.	6-6	215	Shelbyville
54	Melvin Turpin	C	Fr.	6-11	240	Lexington

OFFICIALS: Don Rutledge, Charles Vacca and Robert Hartsfield.

VANDERBILT



No.	Name	Pos.	Cl.	Ht.	Wt.	Hometown
10	Doug Weikert	G	So.	6-1	166	French Lick, In.
11	Jimmy Lenz	G	Fr.	6-2	175	Louisville, Ky.
12	Al McKinney	G	Fr.	6-2	161	Kensington, Md.
15	Jimmy Gray	G	So.	6-1	160	Louisville, Ky.
20	Mike Rhodes	F-G	Sr.	6-5	190	Linden
21	Al Miller	F-G	Fr.	6-6	195	Louisville, Ky.
22	Willie Jones	C-F	Jr.	6-8	190	Buffalo, N. Y.
23	Charles Davis	F-G	Sr.	6-7	215	Nashville
25	Jeff Turner	C-F	Fr.	6-9	225	Brandon, Fl.
31	Ted Young	F	So.	6-8	226	Clarksville
32	James Williams	F-G	So.	6-6	184	Chattanooga
35	Brian Allsmiller	C-F	Sr.	6-8	215	Chicago, Il.
40	John Derenbecker	F	Jr.	6-7	217	New Orleans, La.
41	Kevin Linder	F	Fr.	6-7	216	Denver, Co.



Mike Casey
Director

"\$100,000 BIG BLUE

**CERTIFICATES OF DEPOSIT AT Peoples Bank
PAYS \$500 MORE**

**interest per year than most other banks and savings and loans
pay, and is insured to \$100,000 by the F.D.I.C."**

Call Lee Kinsolving, President, collect for more information: (502) 633-6660.

Substantial interest penalty
is required for early withdrawal.

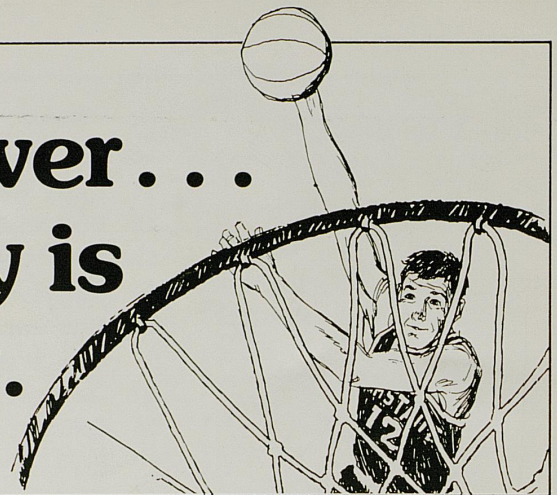
**Bank where
you're important**

**Peoples
Bank**
Bagdad and Shelbyville
Kentucky

insured
up to \$100,000
by F.D.I.C.



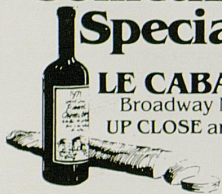
The game is over...
but the party is
just beginning.



The American Express® Card.
Don't leave home without it.™



Try
Something
Special



LE CABARET
Broadway Music
UP CLOSE and FUN

Dinner Tuesday-Saturday
Lunch Monday-Friday
(606) 259-1433

**LE CAFE
CHANTANT**

137 West Vine

Open After the Game

Relax with a cocktail and dessert...
While the traffic lines are long

The Mall at
Lexington Center
(first level)
Open 11 a.m. daily



GRAND EAST
Cantonese • Mandarin • Sze Chuan
Your Gateway to Grand Chinese Dining
Southpark Arcade 272-6626
Nicholasville Road Exit off Circle 4



Restaurant

141 West Vine
Just two blocks from
Rupp Arena

Before the game...
Dinner begins at 5:00
We'll make sure you
make tip-off

After the game...
Dinner or late snacks
till 11:30

Lexington Downtowner



Superb Drinks - Entertainment
Excellence in Dining

"The Only Downtown Motel"
347 East Main Street 255-4481

Dining Room Open
Monday-Saturday 7 a.m.-
2 p.m. and 5 p.m.-9 p.m.
Sunday 7 a.m.-2 p.m.

Lounge Open
10-1 a.m. Daily
Happy Hour 5 p.m.-7 p.m.

Buffet Lunch
Tuesday-Friday 11:30 a.m.-
2:00 p.m. \$3.50

GENNARO'S

Lexitalia

★★★★

RESTAURANT

Lexington's only authentic Italian
Restaurant with a Four Star review.

1765 Alexandria Dr. (Gardenside Plaza) 277-1116 or 1117

Serving Fine Wines and Beer.

Open Monday thru Thursday 11 a.m. to 10 p.m.
Friday and Saturday 11 p.m. to 11 p.m., Sunday 5 p.m.-9 p.m.

Coupon entitles bearer to **ONE FREE Cocktail**
of his/her choice.

**STEAK
and ALE**
RESTAURANT



Redeemable on game day only.

2555 Nicholasville Rd.
Lexington, Ky. 40503
(606) 276-1432



Don Giovanni

Continental American
Restaurant

Lunch M-F 11:00-2:30
Dinner M-Sun 5:00-10:00

Woodhill Center, Lexington, Kentucky

The American Express® Card. Don't leave home without it.™



When You Want to Know



Call 253-1314 for subscription information.



*You are cordially invited
to
Join a Circle of Winners*

Tom Gentry
*Keeneland's leading
Consignor and Buyer*

U.K. Wildcats
*NCAA Champions 1948,
1949, 1951, 1958 & 1978*

Tom Gentry Farm
Route 3, Harp-Innis Pike, Lexington, Kentucky 40511
(606) 299-6657