

# KENTUCKY

vs. Tennessee

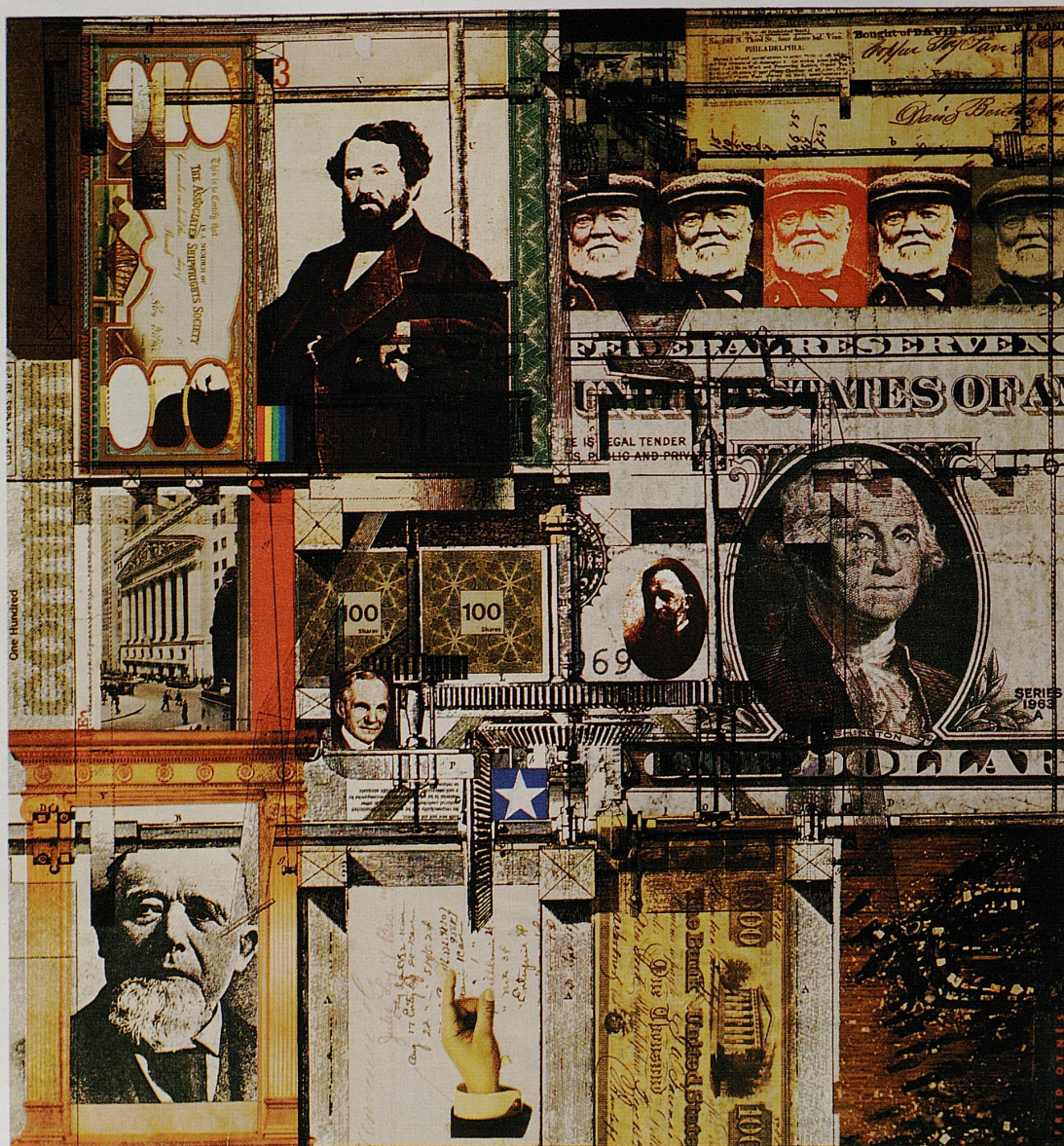


Souvenir Program \$1.75  
RUPP ARENA

Feb. 27, 1983  
Vol. 4, No. BB-16



"All we have of freedom—all we use or know—  
This our fathers bought for us, long and long ago."  
—Rudyard Kipling



This collage by New York artist Fred Otnes was especially commissioned by Brown & Williamson for its permanent collection of fine art works.

The freedom to choose our livelihood was provided to us long ago. And it was typified by the struggle of immigrants to America in the early 1800's. People like Adam Gimbel, a humble Jewish peddler from Germany, who later founded the country's first department store. And individuals who became industrial giants, like Andrew Carnegie from Scotland, who built one of the largest steel producing businesses in the United States. America had given both of them the freedom. The freedom to choose.

A free individual does not live without choice. A free society does not prosper without it. Consider, if you will, the personal

choices we make every day without intervention from others. Now consider how many we take for granted.

The right to choose is the basis of all freedom—political, social, artistic, economic, religious—for all people. But this right must be protected from those who would chip away at it...either deliberately for personal gain, or innocently for the "betterment" of humanity. It must be protected from those who would make *their* choice, *your* choice. These personal freedoms are our legacy as well as our responsibility...to protect and to pass on to those who follow.

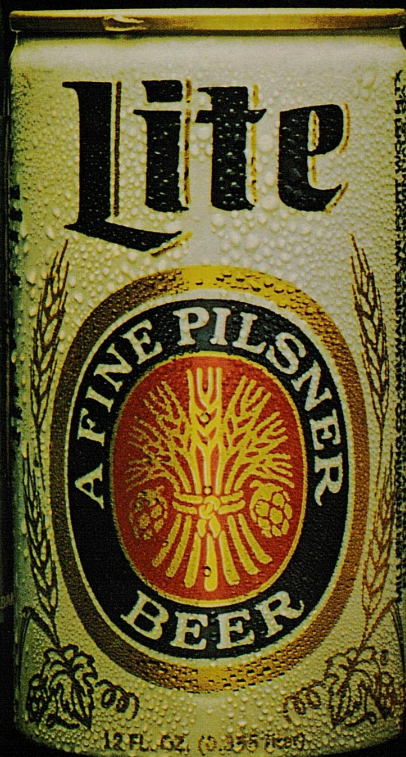
Freedom. It's a matter of choice.

**Brown & Williamson Tobacco Corporation**

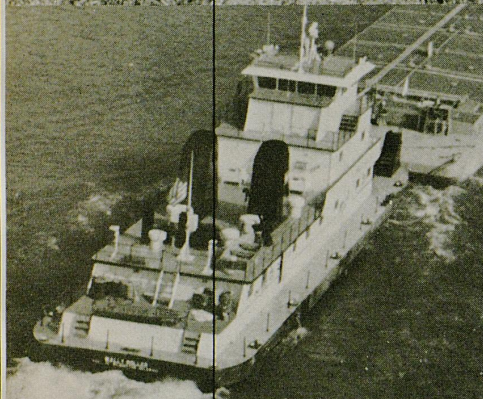
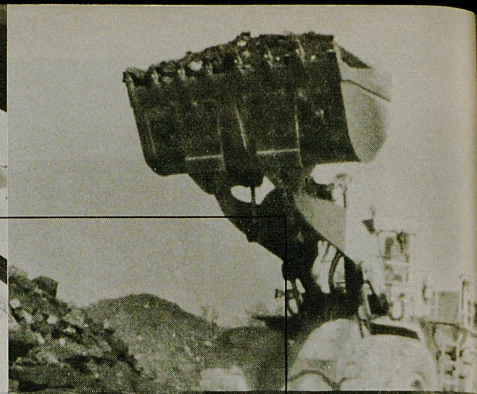
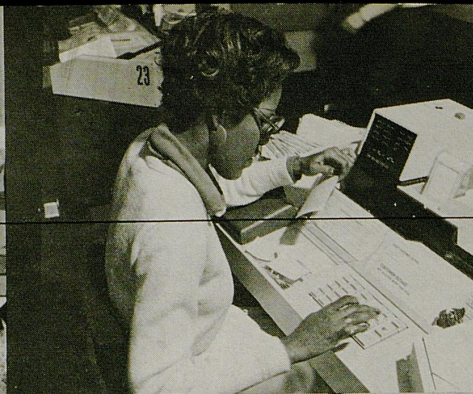
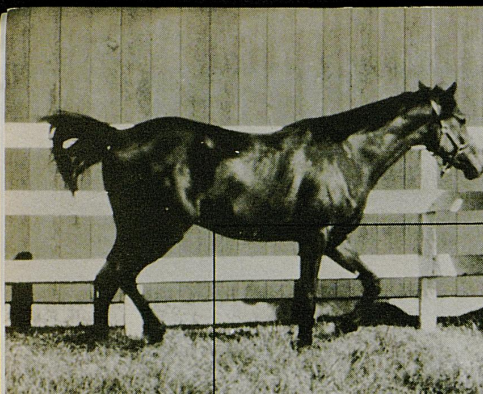


\*1981 Beer Brewed by Miller Brewing Co., Milwaukee, Wis.

*The Miller Brewing Company  
Uncompromised quality  
since 1855.*







## WE'RE MORE THAN A KENTUCKY BUSINESS. WE'RE IN THE BUSINESS OF KENTUCKY.

We're in the business of making business profitable in Kentucky.

### We're Citizens Fidelity Bank

We offer every commercial bank service and we're committed to personalizing those services to meet the financial needs of Kentucky businesses.

We're also the largest correspondent bank in the state, providing every modern banking service to Kentucky through a network of nearly 400 correspondents.

### We're Citizens Fidelity Energy Company

Whatever the field of energy—coal, oil, gas, synthetic fuel or nuclear—we're putting technical know-how and capital resources together to make projects become realities.

### We're Citizens Fidelity

### Equine Company

To meet the needs of a business that's vital to

Kentucky's economy, we're bringing specialized financial expertise to the thoroughbred and standardbred industries.

### We're Citizens Fidelity Mortgage Company

We're the largest construction lender in Kentucky, with complete financial services ranging from land acquisition and development to permanent financing and property management.

### We're Citizens Fidelity Leasing Corporation

We're helping businesses in the Commonwealth profit from the cash flow and tax advantages of equipment leasing. Everything from medical equipment to locomotives.

### We're Citizens Fidelity Corporation

All together, we have over \$2 billion in assets to benefit our state. We're a lot of things to a lot of people. We're in the business of Kentucky.

*In all the financial forest,  
there's only one Service Tree.®*

Member FDIC





# WILDCAT TIP OFF

## CONTENTS

UK Coach Joe B. Hall	4
Tonight's Game	9
UK President, Athletics Director	12
UK Chancellors	13
Wildcat Feature	14-15
Around Campus	18-19
College Basketball Roundup	22
Wildcat Team Photo	25
Scorecard	41
Wildcat Scrapbook	50
Faces in the Crowd	54-55
Opponent Section	58-60
UK Statistics	64-65
Wildcat Greats of the Past	70-71

Published by  
Host Communications, Inc.  
Sports Division  
120 Kentucky Avenue  
Lexington, KY 40502  
(606) 253-3230

Mark A. Dyer  
Director of  
Sports Publications  
Dan Leal, Manager  
Glenda Moore  
Advertising Sales Staff

Russell Rice  
Editorial Consultant  
Photography: Bill Straus  
Printing: The Thoroughbred  
Press  
Lexington, KY  
Artists: Phil Bloomfield  
Barb Van Wie

*Our 86th Year*

**JOE  
ROSENBERG**

*Corner Upper and Vine  
Lexington, Ky.*

**DIAMONDS  
AND  
OLD GOLD**

Bought & Sold

**Cliff  
Hagan's**



**RIBEYE**

*featuring*  
**"FRESH CUT  
TO ORDER"**

**Top Choice  
STEAKS**

Over 27 Different  
Condiments in our  
Open Salad Bar

Select Wines  
& Cocktails  
Available\*

Potato and Bread  
Bread Freshly Baked

**PRIVATE PARTY ROOMS  
AVAILABLE FOR  
CLUBS, ETC.**

- 941 Winchester Rd., Lex., Ky.  
Ph: 253-0750
- Franklin Square Shopping Ctr.,  
Frankfort, Ky. 227-2380
- I-75 Interchange, Berea, Ky.  
Ph: 986-3639

\*Not Available in Berea, Ky.





Joe B. Hall's 10-year record establishes him as one of the finest coaches in college basketball.

While leading the Wildcats to a 22-8 record last year, Hall upped his UK record to 227-74, an average of 22.7 wins per season, to keep ahead of the pace set by his former coach, Adolph Rupp. Rupp averaged 21.5 victories per season over a 41-season span to become the winningest college basketball coach of all time.

One of the finest compliments Hall has received during his coaching career came from Rupp, who died in 1977.

"A good coach," Rupp said, "is a person who can take good material and win with it. Joe has done that."

Judging from Hall's coaching honors, Rupp was as usual, right on target with his evaluation.

Hall has won such honors as Kellogg's 1978 National "Coach of the Year," three Southeastern Conference "Coach of the Year" awards (1973, '75 and '78) and

nomination for Kodak's 1975, '76 and '78 (finalist) "Coach of the Year" awards.

---

**"A good coach," Rupp said, "is a person who can take good material and win with it. Joe has done that."**

---

In 1978 when Kentucky won its fifth NCAA title, Hall was also presented the Rupp Cup (presented to the SEC Coach of the Year by the Birmingham Tipoff Club) and Hall's most coveted personal award, the Dr. James Naismith "Peachbasket" award. The Peachbasket has previously been given to UCLA's John Wooden, Oklahoma State's Hank Iba, Kentucky's Rupp and Red Auerbach of the Boston Celtics.

The 1978 national champs, which had a 30-2 record, became the sixth Wildcat team to win 30 or more games, joining such illus-

trious company as the 1947 NIT runner-up (34-3), the 1948 Olympic Champions (36-3), the 1949 NCAA champions (32-2), the '51 NCAA champs (32-2) and the '66 NCAA runner-up (32-2).

The Hall Era has produced five All-Americans and seven All-Southeastern Conference players. Kevin Grevey, Jack Givens, Rick Robey, Kyle Macy and Sam Bowie were selected a total of 10 times.

Hall began his tour as UK head coach in rather auspicious fashion in 1973, becoming the first rookie coach in league history to be designated Coach of the Year by his peers.

Gathering such honors has been one of Hall's trademarks during a career that began at Shepherdsville (Ky.) High School in 1956 and continued through Regis College before he returned to Kentucky, July 1, 1965, as an assistant to his former coach, Adolph Rupp.

An outstanding athlete at Cyn-

(Continued on page 6)



*Creating Athletes for  
the Sport of Kings...*



# LESLIE COMBS II Spendthrift

Brownell Combs II P.O. Box 996, Lex., Ky. 40588 (606) 299-5271 Telex 218337

Affiliate  
Affirmed  
Al Nasr  
Bends Me Mind  
Big John Taylor  
Blue Times  
Bold Hour  
Caro  
Clem Pac  
Cojack  
Cornish Prince  
Delta Oji  
Dewan Keys  
Exclusive Native  
Fairway Phantom  
Gallant Man  
Golden Man  
Grey Legion  
Hechizado  
Hugueno  
J.O. Tobin  
Jungle Savage  
Kentucky Gold  
List  
Lord Avie  
Magisterial  
Marshua's Dancer  
Nash and Bold  
Native Royally  
Northern Jove  
Orbit Dancer  
Premier Minisire  
Proctor  
Raise a Native  
Seattle Slew  
Sham  
Silent Cal  
Sittad  
State Dinner  
Triple Bend  
Turn to Mars  
Valdez  
Wallima  
Yukon



## A Kentucky Thoroughbred . . .

(Continued from page 4)

thiana, Ky., Hall played freshman basketball and one year of varsity basketball in the "Fabulous Five" era at UK before transferring to the University of the South at Seawanee, Tenn., where he set a school single game scoring record and was considered by Coach Lon Varnell as the best player he ever coached.

After touring Europe with the Globetrotters in 1951, Hall returned to UK in 1955 to complete requirements for his B. A. and later received his M. A. at Colorado State University.



Returning to UK again in 1965 as assistant coach and head recruiter, he was instrumental in developing a running-conditioning program which obviously paid big dividends as the Wildcats capitalized on speed and endurance to advance to the championship game of the NCAA Final Four.

Hall became No. 1 varsity assistant and head freshman coach to Rupp after Harry C. Lancaster was named permanent athletics director Feb. 1, 1969. His record with the freshmen was 60-15, including a 22-0 season in 1971-72.

Hall's basketball reputation

stretches world-wide and has made him a much sought-after clinician and guest speaker. Last summer during the Wildcats' tour of the Orient, he conducted clinics in the Republic of China and in Hong Kong.

He was guest lecturer for the World Basketball Coaches Con-

gress in July of 1977 in the Canary Islands. Hall considers the chance to speak before some 400 coaches from the international set to have been one of his major coaching honors.

He was a member of the 1975 Olympic Basketball Committee and in 1972, he served under Hank Iba in the Olympic Trials at the Air Force Academy.

He is married to the former Katharine Dennis of Harrison County, Ky. They have three children—Mrs. Mike (Kathy) Summers, Mrs. Rick (Judy) Derrickson and Steve of Lexington.

# DELICIOUS!



## This is Wildcat Country... Arby's salutes the University of Kentucky Basketball Team!

Hey Wildcat fans, start your pre-game warm ups at Arby's...join us for your victory celebrations! We're rallying with you all the way...so before and after your games, team up with Arby's.

**At all participating  
Lexington area Arby's**





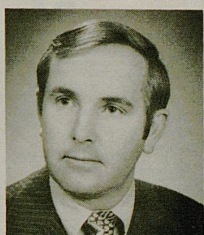
# Ask me.

## Get your coaching tips on life insurance from a pro.

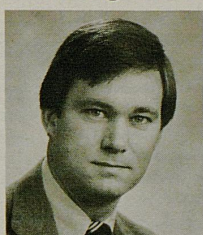
These are some of the many New York Life Agents in this area — all good people to know.



**Joseph Argabrite**  
Lexington



**Larry Botts, C.L.U.**  
Lexington



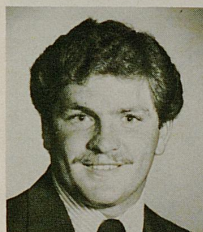
**Bob Breeden**  
Lexington



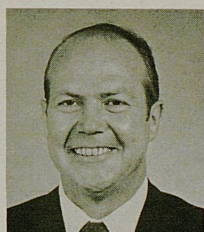
**Ray Daugherty**  
Mount Sterling



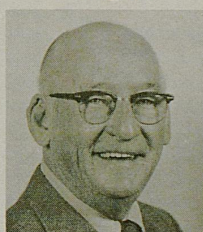
**Mike Fawbush**  
London



**Mark Gardner**  
Frankfort



**Jerry Kincaid**  
Lexington



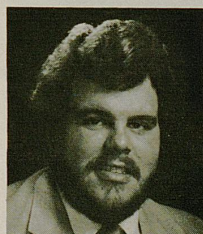
**Chalmer Lindon**  
Hazard



**Ellen Clark Marshall**  
Lexington



**Doug Martin**  
Pike County



**Darrell Patton**  
Prestonsburg



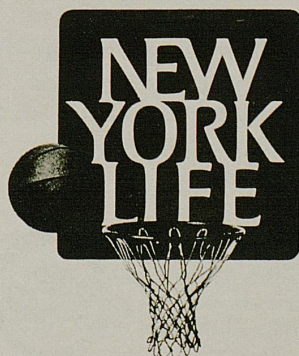
**George Ridings, C.L.U.**  
Richmond



**Paul Trautner**  
Lexington



**Joe Williams**  
Lexington



**Peter B. Crane**  
General Manager  
200 West Vine, 6A  
Lexington, Kentucky  
254-2341

## Go ahead, ask.

New York Life Insurance Company. Life, Group and Health Insurance, Annuities, Pension Plans.



# There are a lot of reasons to shop at LeRoy's.



## Here are 24 of them.

LeRoy's is proud to have 24 highly trained diamontologists and gemologists in our 11 Kentucky stores. Each is a professional who has been certified by the Diamond Council of America. So choosing that perfect diamond at an affordable price is easy at LeRoy's, where you'll find experts who can help make you a better diamond buyer. In fact we guarantee it, in writing with our 60-day money back guarantee. Whether you're buying an engagement ring or a gift for someone special, come and see all the other beautiful reasons to shop LeRoy's in Lexington at the Eastland Shopping Center, Fayette Mall, Lexington Mall and Turfland Mall.

You'll also find LeRoy's Jewelers in Frankfort, Louisville, Morehead, Richmond, Somerset and Winchester.

**LeRoy's**  
Jewelers





# Today's Game

The south's greatest basketball rivalry resumes this afternoon before a packed house at Rupp Arena and a big television audience.

Kentucky and Tennessee have been going at it since 1910 and the best of the two has historically gone on and won the Southeastern Conference. In the 50 years of the SEC, UK and UT have either won outright or shared in 37 titles.

The winner of this border war in football gains possession of the "Beer Barrel." In basketball, the victor many times has claimed the conference championship trophy.

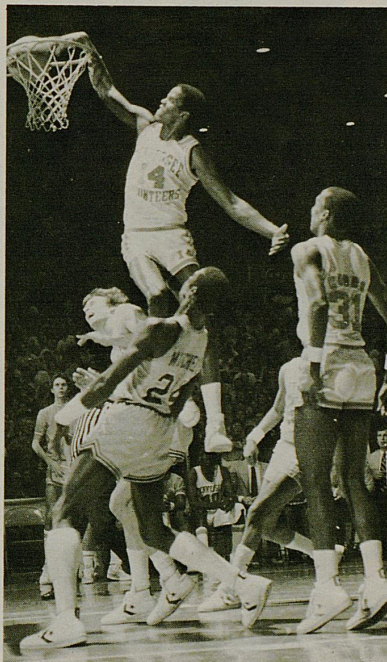
Fourth-year coach **Don DeVoe** has had significant success against the Big Blue. He started off with a bang in 1979 as his first Volunteer squad defeated the Wildcats twice in the regular season and again in the heart-stopping finals of the SEC Tournament.

Since then, the two teams have split, each team winning at home. Kentucky must keep that cycle intact today since the Vols eeked out a two-point win at Knoxville in January.

The big story that night was **Melvin Turpin**, who shredded UT's man-to-man defense for 42 points. The "Big Dipper" hit 18 of 22 shots from the field and six of eight from the free throw line in one of the finest performances in

Kentucky basketball history. **Willie Burton** seemed to have the most "success" against Turpin in that game, but the term should be used loosely.

As was the case with most of UK's losses during that time, turnovers did the 'Cats in. Kentucky lost the ball 18 times to Tennessee's seven. UK's floor game is



DALE ELLIS

KENTUCKY

vs.

TENNESSEE

- Salute To The Seniors On Page 14.
- Scorecard On Page 40.

usually much better in Rupp than at Stokely Center.

Tennessee starts four juniors with senior All-America **Dale Ellis**, including long-range marksman **Michael Brooks**, who had a big bucket in the closing seconds against UK at Knoxville.

The Vols have two major problems coming into today's game: depth and the inability to protect leads late in the game via the four-corner offense. The 45-second clock eliminates stalling and DeVoe admits the Vols have had a tough time adjusting.

Turpin will assuredly be the object of Tennessee's defensive affection, but it will be surprising if the Vols open up in anything but a man-to-man. DeVoe would rather take castor oil than use a zone, but he's been known to use it on occasion.

**LAST MEETING:** (Jan. 31 at Knoxville)—Ellis and Brooks combined for 40 points but Turpin had 42. It still wasn't enough as the Vols won, 65-63.

**SERIES HISTORY:** Although Tennessee has had more success against UK than any other SEC school, the Wildcats still hold a commanding 101-51 advantage.

## PROBABLE LINEUPS

TENNESSEE	HT.	PPG	RPG	POS.	KENTUCKY	HT.	PPG	RPG
10 TYRONE BEAMAN, Jr.	5-11	8.7	1.7	G	10 DIRK MINNIEFIELD, Sr.	6-3	8.4	3.2
21 MICHAEL BROOKS, Jr.	6- 2	14.5	1.4	G	20 JIM MASTER, Jr.	6-5	12.3	2.0
33 DAN FEDERMANN, Jr.	6-10	7.6	4.0	C	54 MELVIN TURPIN, Jr.	6-11	14.7	6.2
14 DALE ELLIS, Sr.	6- 7	22.4	6.9	F	44 CHARLES HURT, Sr.	6-6	8.4	4.9
40 WILLIE BURTON, Jr.	6- 7	9.4	8.5	F	32 DERRICK HORD, Sr.	6-6	11.1	3.9

Top Reserves: 31—Kevin Woods (F, 6-5, So., 2.9 pp, 2.2 rpg); 32—Kirk Naler (G-F, 6-8, So., 1.7 ppg, 1.2 rpg); 34—Rob Jones (F, 6-7, Fr., 1.6 ppg, 2.4 rpg).

Top Reserves: 11—Dicky Beal (G, 5-11, Jr., 5.2 ppg, 1.5 rpg); 24—Bret Bearup (F-C, 6-9, So., 3.5 ppg, 2.1 rpg); 34—Kenny Walker (F-C, 6-8, Fr., 6.6 ppg, 4.7 rpg).

stats through 2/23



*Why do women  
love to stop by*



*Every visit is a warm  
and friendly adventure,  
as you enjoy the relaxed,  
homey atmosphere, attentive  
service, and freedom to  
browse at your leisure.*

*You'll also find our  
Pappagallo  
shoes, clothes and accessories on*

**SALE**

*right now! Do stop by  
before or after the game and  
bring your friends—our sale  
items will go quickly.*

*Join us for a Pappagallo  
adventure...*

**Pappagallo®**

Located downstairs, 2nd level  
The Mall at Lexington Center  
and in the  
Lansdowne Shoppes

## Assistant Coaches



**LEONARD HAMILTON**  
Associate Coach

Leonard Hamilton was named UK's first associate basketball coach on Oct. 15, 1980.

Hamilton has been a member of the Wildcat coaching staff for eight years. He came to Kentucky

after serving three years as an assistant coach at Austin Peay.

He has always been noted as an outstanding recruiter and as a defensive specialist. In 10 of the 11 years Leonard's been coaching, the team he has been associated with has advanced to post-season play.

A product of Gastonia, N. C., Hamilton lettered three years in football and two years in basketball in high school. He captained his basketball team for two years at Gastonia Community College, and also served as team captain at the University of Tennessee at Martin, where he graduated in 1970.

The 34-year-old Hamilton is married to the former Claudette Hale of McMoresville, Tenn. They have a son, Lenny, 13.



**JOE DEAN**  
Assistant Coach

Enthusiastic, hard-working Joe Dean is in his sixth season with the University of Kentucky basketball program.

The Baton Rouge, La., native earned football and basketball letters at Baton Rouge High and played basketball at Mississippi State, making the 1976 Academic All-SEC squad.

Besides his duties associated with the Wildcat basketball team, Dean also serves as director of the annual Wildcat Coaching Clinic and the popular Joe B. Hall Wildcat Basketball Summer Camp.

He is married to the former Ellen Anger of Jackson, Miss. They have a son, Scott, 3.



**BOB CHAMBERS**  
Assistant Coach

Bob Chambers, a respected high school coach in Tennessee prep circles for 20 years, is now in his third season with UK.

Prior to the 1979-80 season, Chambers coached nine years at Tennessee High in Bristol, Tenn., where he compiled a shining 228-68 mark and made three trips to the state playoffs.

Of his 20 total years in high school coaching, he spent 13 as a head coach. His overall record is 317-116.

He is married to the former Elva Jean Potter of Elizabethton, Tenn. They have a daughter, Robin Lea, 20, a student at UK and 18-year-old Chip.



# **Fayette Mall is the place for the Working Woman, Like Me!**



Because I'm a working woman, I have precious little time to spend on shopping, and Fayette Mall understands. There are over 80 great stores including Sears, Stewarts, and Shillito's, full of quality products and the latest fashions all in one location. Fayette Mall is convenient to where I work and I always get fast, courteous service. And when I need a quick lunch or dinner, Fayette Mall has everything from salads to steaks. Reasonably priced too, just like everything else I find at Fayette Mall, the best products at the lowest possible cost. That's value. That's why Fayette Mall is the place for the working woman . . . like me.



## **Fayette Mall**

Fayette Mall. It's the place for me. Over 80 great stores.  
Nicholasville Road at New Circle Road. Lexington, Ky. 272-3493  
Mon.-Sat. 10-9, Sun. 1-5



## Administration

Dr. Otis A. Singletary, the eighth president of the University of Kentucky, assumed that office in August 1969. He had previously served as chancellor of the University of North Carolina at Greensboro, executive vice chancellor for academic affairs in the University of Texas System and director of the Job Corps for the Office of Economic Opportunity.

Dr. Singletary, a native of Gulfport, Miss., holds degrees from Millsaps College and Louisiana State University.

As president of the principal institution of higher learning in the Commonwealth, Dr. Singletary is greatly concerned with the University's role as a land-grant institution, a "people's university" accessible to all who can profit from education.

In the 13 years he has been president, the University has grown to where there are now about 23,000 students on the Lexington campus and about 22,000 students in UK's 13 community colleges, and the University has become one of the major research institutions in the country.

Great strides toward academic excellence have been made during Dr. Singletary's presidency at UK. Two professional schools—dentistry and pharmacy—have been ranked among the best in the nation. Departments such as political science, history and mathematics have gained national attention. The UK Library now ranks among the best in the Southeast, and a large portion of the world-wide research related to tobacco and health is now done at UK.

Under Dr. Singletary's guidance, strong efforts have been made to meet the needs of minority groups including the establishment of an office of vice chancellor for minority affairs.

Recognition of his service to the University was evidenced by the UK Alumni Association which presented to Dr. Singletary its Alumni Service Award—an honor rarely bestowed upon a non-alumnus of the University.

He and Mrs. Singletary, the former Gloria Walton, have three children: Bonnie, Scot and Kendall.



**OTIS A. SINGLETARY**  
University President

### UKAA Board of Directors

#### Faculty Members

Dean Marion E. McKenna  
Dr. Daniel R. Reedy  
Dr. N. J. Pisacano  
Dr. Paul Sears  
Dr. Charles Ellinger  
Dr. Charles Roland

#### Trustee Members

Frank Ramsey, Jr.  
William B. Sturgill

#### Members-at-large

Albert B. Chandler  
S. T. Roach

#### Ex Officio Members

Dr. Otis A. Singletary, Chairman  
Dr. R. G. Zumwinkle  
Dr. Jack Blanton  
Dr. Ray Hornback  
Dr. W. L. Matthews  
Dr. Art Gallaher  
Steve Lochmueller

#### Alumni Members

Dr. Ralph Angelucci  
Thomas P. Bell

#### Student Members

Whayne Houghland  
Lynn Spoonamore

## Athletics Director

Continued growth in practically all phases of UK athletics has been a hallmark of Cliff Hagan's seven-year reign as Wildcat athletics director, with fine attendance at football and basketball games, increased attendance at Lady Kat basketball and men's baseball, and a steady up-grading of facilities.

Recent physical improvements include a new baseball grandstand behind home plate, a new athletic learning center for the academic advisory staff, new locker rooms in the football dressing rooms and construction of a new equipment shed for track.

On the institutional side of the ledger, the University was host

to both the men's and women's Southeastern Conference basketball tournaments earlier this year and will host the NCAA Mideast Regionals in 1984 and the NCAA Championship Finals in 1985.

Hagan, who has seen and overseen vast improvements in all phases of the UK athletics program since returning to his alma mater as assistant athletics director in 1972, has under his command a total of 20 sports ranging from football and men's basketball in Level I, to women's basketball in Level II, and 17 sports in Level III.

On the personal side, Hagan received one of his highest individual honors in 1978 when he



**CLIFFORD O. HAGAN**

became the first University of Kentucky basketball player to be installed in the Naismith Memorial National Basketball Hall of Fame in Springfield, Mass.

He is married to the former Martha Milton of Owensboro. They have four children: Mrs. Barry "Lisa" Thaxton of Lexington, Mrs. Jim "Laurie" Hill of West Liberty, and Amy and Kip, both of Lexington.



## UK Chancellors



**PETER BOSOMWORTH**  
Medical Center

Dr. Peter Bosomworth, vice president of the Albert B. Chandler Medical Center since 1970, was named chancellor of the center when a major reorganization of the University was completed in August.



**ART GALLAHER**  
Lexington Campus

Dr. Art Gallaher is chancellor of the Lexington campus in the University of Kentucky system. Dr. Gallaher came to UK in 1963 as chairman of the UK anthropology department and in 1972, he was named dean of the College of Arts and Sciences.



**CHARLES WETHINGTON**  
UK Community College System

Dr. Charles Wethington became vice president of the UK Community College System in 1980 and is now chancellor of the system. Dr. Wethington began his UK career in 1964 as an instructor of educational psychology.

After the game  
"adjourn" to  
**Spirits**

a uniquely  
special kind of meeting place—  
at the



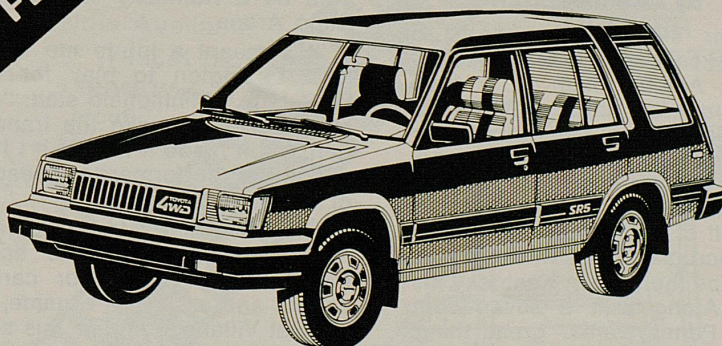
**RADISSON PLAZA  
LEXINGTON**

Across from Rupp Arena

Great entertainment—  
even BETTER drink prices!  
**NO COVER/NO MINIMUM**

**OH  
WHAT A  
FEELING!**

**Sales  
Service  
Parts**



TERCEL 4WD 5-DOOR SR5 WAGON

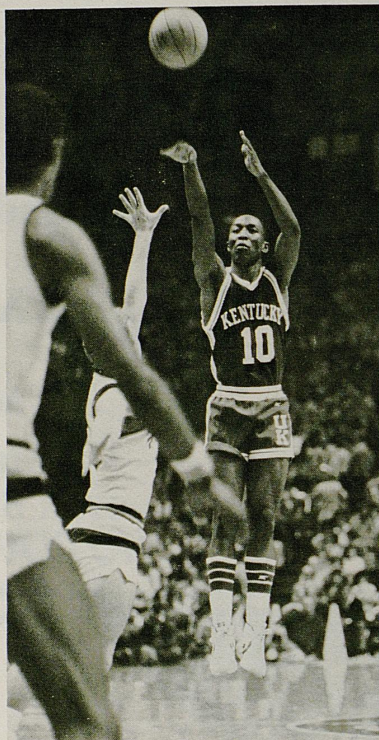
**Toyota of Lexington, Inc.**

630 New Circle Road  
Lexington, Kentucky 40505  
254-5751





# Here's to the Seniors...Dirk, D



By DAN METZGER

Their statistics are proof of their excellence on the basketball court. Among them is a 1000-point member, an all-time UK assist leader, and one whose consistency has become a trademark.

The three seniors on this Kentucky squad came to Lexington in the fall of 1979, touted as the finest recruiting class in the nation, perhaps the best in Kentucky history. Along with a seven-footer from Pennsylvania, great things were expected from these young men.

The national championships haven't materialized yet, but there is still that one more shot. Three consecutive NCAA tournament appearances, three 20-win seasons, a career mark of 91-25, and two seasons without the seven-foot All-American are the accomplishments of Dirk Minniefield, Derrick Hord and Charles Hurt as they appear today for their last

time as a Kentucky Wildcats in Rupp Arena.

"It's meant a lot to me being from Lexington to play for the University," Minniefield said. "It's been easier to make the transition, but it made it harder if I had a sub-par performance because of the peer pressure."

The 6-3 former "Mr. Basketball" from Lexington Lafayette holds the Kentucky record for career assists and assists in a game, 14 against Villanova earlier this season. Heading into the weekend, he was only six points away from the 1000-mark.

Minniefield has been named Co-MVP of the team the last two seasons and was named MVP of the SEC Tournament last season in Lexington. However, he does not hold these individual accomplishments as his biggest thrill at Kentucky.

"Beating LSU my freshman year on a last second shot to win

the SEC was the biggest highlight," he said, "and we've been a success, winning 29 games every year and there was only one year we didn't win the SEC."

"Dirk's been a real leader for us," said UK head coach Joe B. Hall. "It will seem like part of the University will be gone when he leaves. His contributions don't always show up in the scoring column."

The strictness and rigidity of the UK program has been a learning experience for the father of three.

"It taught me to be punctual and on time. My background was not used to that and that will help me tremendously in the future."

When asked what type of reception he thought he would receive today from the Kentucky fans, the business major said "the record shows what I've done."

"It's been a pretty good experience," said the smooth-shoot-





# k, Derrick and Charles

ing Hord. "I've had a lot of ups and downs, but it's been a learning experience that will be valuable for me the rest of my life."

"It will help me deal with any type of situation in both work and family."

An All-SEC and honorable mention All-American selection last season after leading the Wildcats in scoring and minutes played, Hord is currently 20th on the all-time UK scoring list with 1,199 career points heading into the weekend.

**"It will help me deal with with any type of situation in both work and family."**

"Derrick Hord is one of the finest young men ever to wear the blue," Hall said, "and he has been a key factor in all four years. We will miss his feather touch and exciting play."

The communications major, who hopes to land a job in broadcasting when his playing days are over, hopes the Kentucky fans remember him as a team player and "somebody who played hard for a team that meant a lot to me and gave it my all when I went out there."

"I've enjoyed myself," said the steady Hurt. "I have no regrets being here four years."

One of UK's most consistent players, the Shelbyville native has played in every game since coming to Kentucky and traditionally draws the opposition's top offensive player.

"Charlie Hurt exemplifies what a captain should be," Hall said. "He's a leader on and off the court by example and will always be a credit to the University and the state of Kentucky."

"The main thing is I've accomplished my goals of being a better person and player," said the public relations major. "I would like everyone to remember me as a person rather than a basketball player."

All three share one thought of playing Tennessee in their last home appearance: to beat the Vols.

"Hopefully, that's the goal we're shooting for," Hord said, "we just want to win."

"It's nice playing Tennessee the

last time," Hurt said. "We would like going out winning the game."

"I definitely do. I like playing Tennessee the last game," Minniefield said. "Tennessee is our main rival and beating them would make all the ups and downs worth while."

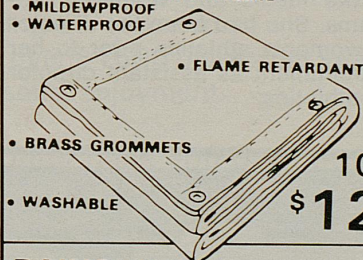
## HARBOR FREIGHT SALVAGE COMPANY'S TOOL WAREHOUSE

### Big Blue Special

#### TARPS

- MEETS ALL OSHA REQUIREMENTS
- REINFORCED POLYETHYLENE
- MILDEWPROOF
- WATERPROOF

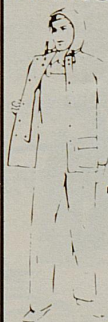
Available in  
Blue or Orange



8 x 10  
\$9.00

10 x 12  
\$12.00

#### RAINSUIT



Now Available  
in Wildcat Blue

- 100% Water-proof
- Fully Lined

10.95

#### BLACK & DECKER WORKMATE



Wt. 18 lbs.  
Ht. 27 3/4"

\$24.95



MON. - FRI.  
8:30-6:00

1387 NEW CIRCLE RD., N.E.

Lexington, KY 40505  
(606) 253-0148

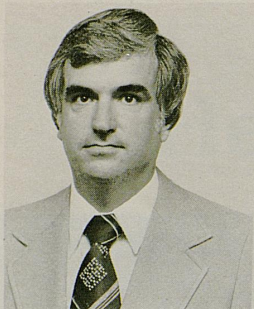


SAT.  
9:00-5:00

**TOOLS FOR FARM, HOME and INDUSTRY  
SAVE MONEY WITH OUR PRODUCTS**







**LARRY IVY**

**LARRY IVY  
Asst. Director of Athletics  
for Finance**

Larry is involved primarily with the administration and management of the business operations of the athletics department. He joined the athletics department in 1976 and he came to UK in 1969 as director of housing.

A native of Huntsville, Ala., Ivy earned his bachelor's and master's degrees from the University of Alabama. He and wife Barbara have one daughter, Kim.

**FRANK HAM**  
**Asst. Director of Athletics**

Frank came to the University in 1968 as administrative assist-



**FRANK HAM**

ant to football coach John Ray, and was reassigned to the athletic director's staff in 1972. He became assistant athletics director soon after Cliff Hagan succeeded Harry C. Lancaster as athletics director.

Ham and wife Rosemary are both from Niles, Mich.

**SUE FEAMSTER**  
**Asst. Director of Athletics**

Sue joined the athletics association in 1978 with the merger of of the men's and women's programs. She had been the director of women's athletics prior to her appointment as assistant director of athletics.



**SUE FEAMSTER**

A product of Frankfort, Feamster came to UK as a grad student in 1970 and was named assistant director of campus recreation in 1972 and women's athletics director in 1974.

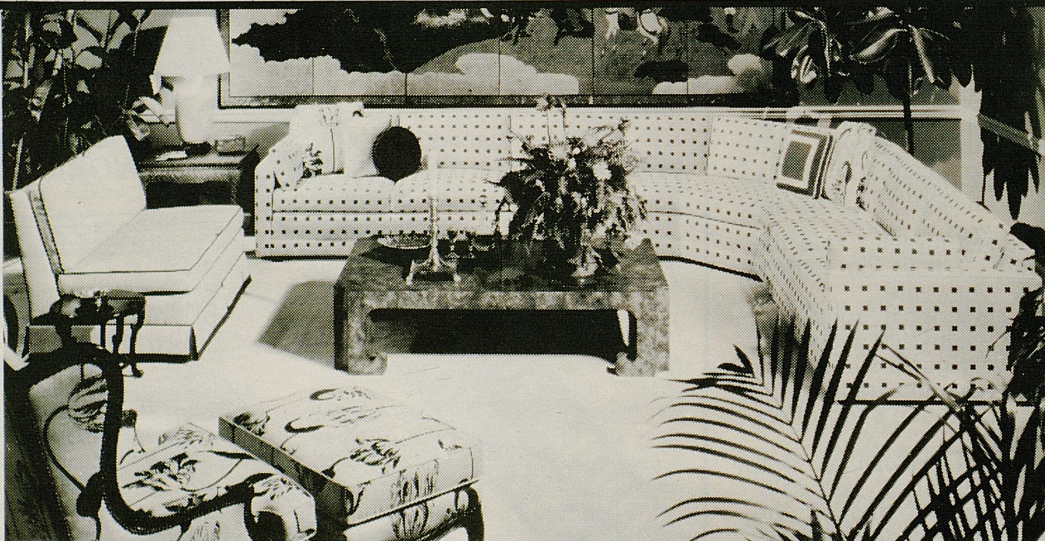
**BOB BRADLEY**  
**Assistant Director of Athletics  
for Academic Affairs**

Bob Bradley came to UK in 1971 to pursue a master's degree in education psychology and counseling.

He served as coordinator of career counseling and director of financial aid for the Lexington Technical Institute before joining the Athletics Association in 1977.



**BOB BRADLEY**



Furniture & Interiors  
by Heinsmith  
A discerning investment  
in quality

**Heinsmith**

868 East High St.  
Chevy Chase Place  
Lexington, Ky. 40502  
(606) 269-7339



## **Do you need financial help with your college education?**

**If so . . . The Kentucky Air National Guard has  
good news for you.**

The Kentucky Air National Guard is one of the best ways that you'll find to help finance a college degree. The following are just a few of the many benefits that can be yours for working only two days a month and fifteen days annual training a year.

- Obtain up to 50% tuition assistance to attend any college, university, vocational school or accredited proprietary school within the state of Kentucky.
- Enlistment bonus or tuition grant for non-prior service persons only for selected career fields when available, up to \$4000 in tuition assistance.
- Part-time employment while attending college, only 16 hours per month and two weeks during the summer.
- Opportunity to earn over \$1500 dollars per year to use toward your education or for your personal enjoyment.

Don't let this opportunity pass you by. Set your sights high with today's Air National Guard.

On, on U of K and Go Big Blue, continue to be a part of a winning tradition with the best Air National Guard unit in the nation — The Kentucky Air National Guard — The Fighting Phantoms and The Fighting Wildcats — what a team!!!

**CONTACT THE KENTUCKY AIR NATIONAL GUARD TODAY!  
(502) 566-9424**

**The Guard belongs.**





## Campbell House Inn

We take special pride in providing the finest in services... for your stay in Lexington during UK sporting events... for after-game dining and entertainment... for anytime you and your guests require the finest!

•  
**Over 300 rooms**

•  
**New jacuzzi suites**

•  
**Biggest line-up  
of entertainment  
in town**

•  
**The finest in  
dining service**

•  
**Dancing in our lounge**



### The Campbell House Inn

1375 Harrodsburg Road  
Lexington, Kentucky  
(606) 255-4281

Toll Free—KY: 800-432-9254  
Other States: (800) 354-9235

# Around

By PAM FAHEY  
UK Information Services

Hidden away in what was once a storeroom in the animal sciences department at the University of Kentucky is one of the better-known personalities of the UK campus.

A mild-mannered Irishman with a penchant for tea with milk, Thomas Tobin has become perhaps not a household name, but certainly a "stable" name.

Tobin came to UK not only with a beguiling smile and intriguing soft speech, but with a portfolio of impeccable credentials. He graduated in veterinary medicine from University College, Dublin, Ireland, and the University of Toronto, Canada, with a Ph.D. in pharmacology. Since becoming head of the Kentucky Equine Drug Research Program at UK, Tobin has passed the appropriate boards and is a licensed veterinarian in this state.

A veterinary pharmacologist-toxicologist, Tobin was recruited from Michigan State University where he was a professor in the department of pharmacology. When offered the UK position, Tobin moved here willingly. He is an expert in this field and the horse population presents some very interesting and challenging opportunities for research.

"I am intrigued by animals' various solutions to problems of living. The horse is in an unusual environment in that he is at the whim of mankind," he said concerning his interest in the horse aspect of pharmacology research.

The demand for drug study in horses is greater than in other species, Tobin said. Most of the other species' work is done 'in-house' by drug companies. With the public's increased awareness of the use of drugs in performance horses, particularly race horses, the need for information on the subject has grown geometrically.

A prolific writer, Tobin has been involved in about 120 publications; about 80 have been written since he came to UK. Most widely known is his book, "Drugs and the Performance Horse," published in 1981. This tome deals with the "state of the art" of using medications in horses and how they act. It has been well received. Reviews from both scientific and horse publications have been favorable. Though scientifically based, the book is not purely a 'hard-core' scientific treatise. It was designed to reach all persons interested in performance horses.

---

**"I am intrigued by animals' various solutions to problems of living. The horse is in an unusual environment in that he is at the whim of mankind."**

---

While embroiled in a field in which there is controversy—drug use in horses—Tobin has not become a truly controversial figure. He says he reports scientific findings and lets the reader apply them.

He has been called to testify in several court cases but only as a pharmacologist-toxicologist—he relates scientifically the chemistry of these drugs.

Tobin often is backed by funds from such organizations as the U. S. Trotting Association and the USDA Animal Health Research group. Including projects funded while he was in school, he has been supported to the tune of about \$1.2 million. Research beginning in his lab this fall is in the perception of pain in horses and ways medications can alter those perceptions.

Tobin will study the chemistry of these drugs because there is a "big controversy now about the running of horses that are on these medications," he said. The



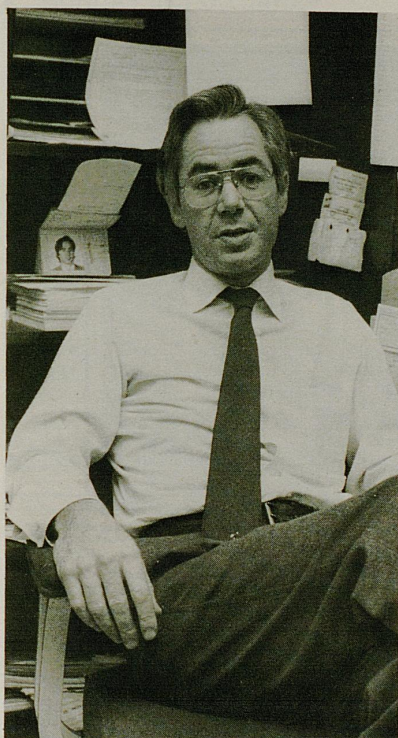


# Campus

research will begin with developing simple pain models.

Always humane, this veterinarian who took in the campus-famous squirrel, Earl, and raised it from infancy, assures people that the work will not be cruel.

Beams of light similar to flashlights will be directed at a horse's



**Thomas Tobin is intrigued by solutions to horse problems because these animals are at the "whim of mankind."**

ankle. As soon as the horse experiences any uncomfortable sensation as noted by either flinching or shifting of its weight, the experiment is terminated, Tobin said. It will be a timed response model. The animals will not be subjected to inhumane treatment. After researchers have determined the response time to the stimulus, they will administer medications which alter perception and time the horse again.

The research will begin with the most common compounds like

phenylbutazone ("bute") and will progress through other classes. "There is a misconception of how these drugs work," Tobin said. "We want to clearly demonstrate how they work."

For example, bute, which is a non-steroidal anti-inflammatory, is often confused with narcotics. It is analogous to human's aspirin. There is a need, according to Tobin, to dispel many of these myths so that people involved with their use can be informed and accurate.

"We expect these drugs to behave in horses as they do in other species," he said, but that is not a certainty. In all he does, Tobin strives to reduce misinformation. He seeks the scientific data. He calls it, "Applying the methods of science vigorously" to these questions.

He may not know the answer to a drug-related question when first asked, but like Kentucky's weather, give him a day (in the cosmic sense) and that'll change.

A scientist in the purest sense, he looks for answers. If called upon to interpret them, he will, and in a most scholarly manner. But, if asked merely for "the facts, just the facts" he will with equal adroitness, present them and leave the application to others.

From the first time he stepped off a plane and saw the lush, rolling landscape of Kentucky, Tobin knew when he arrived. The greenness reminded him of his Irish homeland. The people here have received him openly. He and his wife, Marysia, are often guests of prominent horse people and it isn't uncommon to see his ever-present smile in social event press photos.

Calling Lexington and the Bluegrass a "mid-western, semi-Southern with the overlay of the University and the horse world" area and the "international center of the horse industry," Tobin seems to have found his niche.

## *Come See Lexington's First Sport Court*

**Offering 15 games**

- Racquetball
- Paddle Tennis
- Wacketball
- Badminton
- Pickleball
- Volleyball
- Shuffleboard
- Basketball
- Etc. etc. etc.

### **BEAUTIFUL HOMES**

**These apartments are so plush & private, it's almost like having your own home.**

Huge apartments, each with individualized entrance and solid, soundproofed construction. Lush landscaping and extensive recreational facilities make it the natural choice for single or family living!

On Tates Creek Rd., just west of New Circle

No pets, please **273-5500**

*ROLLING  
RIDGE*



# WE HAVE A GAME PLAN!



At Ashland and Valvoline, we recognize the need to develop a game plan to get the jump on competition and stay ahead.

In our business as in sports, we look to competitive spirit and teamwork as vital links in the drive to success and future growth.

Each day we begin a renewed dedication to practice the main fundamentals in the game of business . . . to provide our customers with the best possible products in the most cost-effective manner. Our customers are the bricks of the foundation upon which our exceptional growth has been built.

Like the Kentucky Wildcats, Ashland

and Valvoline have developed a winning tradition over the years. And as we approach each new "season", we realize that the battle to win will be tough. But we are ready for the challenge.

Ashland Oil, Inc. and  
Valvoline Oil Company.

*We have a winning game plan.*





THERE'S  
SOMETHING  
FOR  
EVERYONE  
AT

## Blue Boar<sup>®</sup> CAFETERIAS

TURFLAND MALL

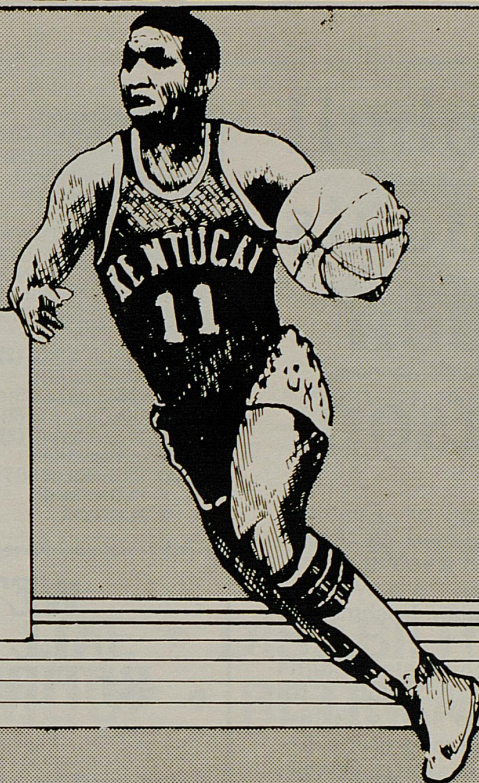
MONDAY thru SATURDAY

SUNDAY

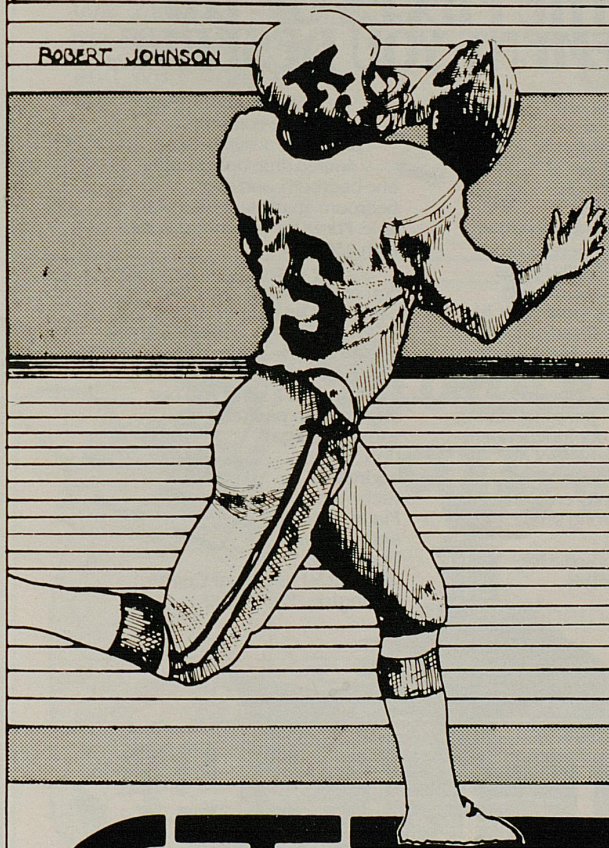
11:00 A.M. — 2:30 P.M.

11:00 A.M. — 7:00 P.M.

4:15 P.M. — 8:00 P.M.



ROBERT JOHNSON



THE HOTTEST GAME IN TOWN!

Special  
Party  
Packages



Ask About  
our  
Fund-Raising  
Ideas!

Monday - Saturday 10 a.m. - 11 p.m.  
Sunday 12:30 p.m. - 9:30 p.m.

## Record Bar<sup>®</sup>

RECORDS, TAPES & A LITTLE BIT MORE  
TURFLAND MALL



# Turfland Mall

Harrodsburg Road  
at Lane Allen

Monday-Saturday 10:00 a.m. to 9:00 p.m.  
Sunday 1:00 p.m. to 5:00 p.m.



# Baseball Wildcats Open Season

The University of Kentucky baseball team opened its season this weekend with a young squad.

Nineteen of the 29 players on the roster are either freshmen or sophomores.

The entire pitching staff returns from last year's 23-32 club, a rebuilding year after 1981's 39-16-1 campaign and second place finish in the Southeastern Conference.

Fourteen lettermen return for Coach Keith Madison, but only two returnees were among last year's regular eight starters.

First baseman Tim Anderson and second bagger Terry Ryan are back, but junior college transfer Steve Kundick will challenge Anderson for playing time.

Pitching should be the strength of the club as starters Paul Kilgus, Jay Ray, Jeff Parrett and Jeff Helman are back.

Kilgus, the only left-hander of the group, was 6-5 last season with a 3.51 ERA. Ray notched a 6-1 record with a 4.11 ERA as a freshman.

A newcomer to watch is Louisville freshman Jack Savage, perhaps the finest prep right-hander in the Commonwealth last year.

JUCO John Sikes will be a player to watch at third base and newcomers Scott Knox and Wayne Able are expected to become standouts in the outfield. Able, a freshman from Mobile, was a seventh round pick of the Montreal Expos last June.

Instead of the usual spring trip to Florida, the Wildcats will host the first Kentucky Classic, March 14-18 at Shively Sports Center. Seton Hall, Maryland, Southeast Massachusetts, Eastern Connecticut and Dayton are entered.

## 1983 UK BASEBALL SCHEDULE

Date	Opponent	Time			
Feb. 26	ST. XAVIER (2)	1:00	Apr. 5	at Eastern Kentucky	3:00
Feb. 27	ST. XAVIER (2)	1:00	Apr. 6	NEW YORK TECH	3:00
Mar. 2	at Kentucky St.	3:00	Apr. 7	NEW YORK TECH	3:00
Mar. 5	at Georgia (2)	1:00	Apr. 9	GEORGIA (2)	1:00
Mar. 6	at Georgia	1:30	Apr. 10	GEORGIA	1:30
Mar. 10	GEORGETOWN	3:00	Apr. 12	INDIANA	3:00
Mar. 11	KENTUCKY STATE	3:00	Apr. 15	at LOUISVILLE	7:30
Mar. 12	WEST VIRGINIA	1:30	Apr. 16	SOUTHERN ILLINOIS (2)	1:00
Mar. 13	WEST VIRGINIA	1:30	Apr. 17	SOUTHERN ILLINOIS	1:00
Mar. 14	KENTUCKY CLASSIC	TBA	Apr. 18	EASTERN KENTUCKY	3:00
-18			Apr. 19	LOUISVILLE	3:00
Mar. 19	TENNESSEE (2)	1:00	Apr. 23	at Tennessee (2)	1:00
Mar. 20	TENNESSEE	1:30	Apr. 24	at Tennessee	1:30
Mar. 22	at Morehead State	3:00	Apr. 26	at Cincinnati	3:00
Mar. 24	CINCINNATI (2)	1:00	Apr. 30	VANDERBILT (2)	1:00
Mar. 26	at Vanderbilt (2)	1:00	May 1	VANDERBILT	1:30
Mar. 27	at Vanderbilt	1:30	May 7	at Florida (2)	6:00
Mar. 30	MOREHEAD STATE	3:00	May 8	at Florida	1:30
Apr. 2	FLORIDA (2)	1:00	May 12-15	SEC Tournament	TBA
Apr. 3	FLORIDA	1:30		Home Games in ALL CAPS	
				SEC Eastern Division in Bold	

## WE'VE PUT TOGETHER ALL THE PIECES OF THE RETIREMENT YOU DESERVE.

You know what you want in retirement. But, putting the right pieces together can be tough. Especially today.

Now there's an exciting new community developing in Lexington that finally brings together the very elements

you're looking for in retirement: the

right location with plenty of elbowroom, a personal setting for independent

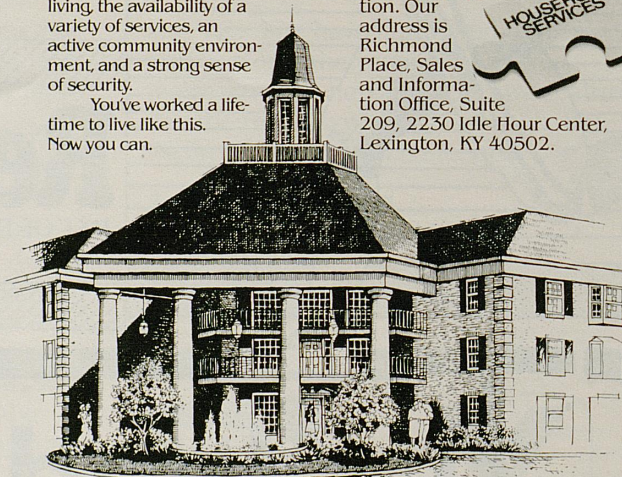
living, the availability of a variety of services, an active community environment, and a strong sense of security.

You've worked a lifetime to live like this. Now you can.

At Richmond Place. Pre-construction

prices are available for a limited time only. Studio, one-bedroom, and two-bedroom apartments are available. Prices for these start in the high \$30s.

For a complete presentation of the Richmond Place plans and programs telephone (606) 269-6308 and ask a sales representative for an appointment. Or send your address to us and we'll send you our information packet with no obligation. Our address is Richmond Place, Sales and Information Office, Suite 209, 2230 Idle Hour Center, Lexington, KY 40502.



**RICHMOND PLACE**  
You've earned it.



We salute the Kentucky Wildcats  
with the U of K pep song.

On, on U of K  
We are right  
for the fight, today.  
Hold that ball  
and hit that line,  
Every Wildcat star will shine.  
We'll fight, fight, fight  
for the blue and white.  
As we roll to that goal, varsity.  
We will kick, pass and run  
Till the battle is won  
and we'll bring home a victory.



T.O. Jack Hall, CLU  
Suite 600  
Louisville Trust Bldg.  
Louisville, KY 40202  
(502) 587-0936



Leonard "Babe" Ray, CLU  
501 First National Bldg.  
Lexington, KY 40507  
(606) 255-8722

INSURANCE FOR YOU AND YOUR BUSINESS

## LIFE • DISABILITY GROUP • RETIREMENT

Registered Representatives  
PML Securities Company  
4601 Market Street  
Philadelphia, PA 19101



PROVIDENT  
MUTUAL  
LIFE INSURANCE COMPANY  
OF PHILADELPHIA



## Attention: Big Blue Fans We've Got The Spirit!

For dining and spirits, T. W. Lee's can't be beat.  
...Whether you're headed for the game... or celebrating  
afterwards, meet your friends at T. W. Lee's

Our lineup features a variety of specialty foods,  
including our famous ribs... plus seafood, salads,  
sandwiches, burgers, and desserts.

Or enjoy an expertly mixed drink from our  
lounge... Win or lose at the game, no one loses at  
T. W. Lee's... We've got the spirit.

# T.W. LEE'S

Richmond at New Circle Roads



# U.K. Basketball Schedule 1982-83

DATE	OPPONENT	SITE	TIME	DATE	OPPONENT	SITE	TIME
Nov. 21	<b>Soviet National Team</b>	LEXINGTON	86-89	Jan. 15	<b>Auburn</b>	LEXINGTON	67-75
Nov. 27	<b>Butler</b>	LEXINGTON	90-53	Jan. 17	<b>Florida</b>	LEXINGTON	70-63
Dec. 1	<b>Notre Dame</b>	South Bend	58-45	Jan. 22	<b>Vanderbilt</b>	Nashville	82-77 (OT)
Dec. 4	<b>Villanova</b>	LEXINGTON	93-79	Jan. 29	<b>Georgia</b>	Athens	63-70
Dec. 7	<b>Detroit</b>	LEXINGTON	83-46	Jan. 31	<b>Tennessee</b>	Knoxville	63-65
Dec. 11	<b>Illinois</b>	LEXINGTON	76-57	Feb. 5	<b>Alabama</b>	LEXINGTON	76-70
Dec. 17	<b>UKIT</b>	LEXINGTON		Feb. 8	<b>Mississippi State</b>	LEXINGTON	88-67
	<b>UK vs. Duquesne</b>		55-42	Feb. 12	<b>Auburn</b>	Auburn	71-69
Dec. 18	<b>UK vs. Tulane</b>	LEXINGTON	80-61	Feb. 14	<b>Florida</b>	Gainesville	73-61
Dec. 22	<b>Indiana</b>	Bloomington	59-62	Feb. 19	<b>Vanderbilt</b>	LEXINGTON	82-63
Dec. 29	<b>Kansas</b>	LOUISVILLE	83-62	Feb. 26	<b>Georgia</b>	LEXINGTON	2:00 (TV-27*)
Jan. 3	<b>Mississippi</b>	LEXINGTON	72-60	Feb. 27	<b>Tennessee</b>	LEXINGTON	2:05 (TV-18)
Jan. 5	<b>Louisiana State</b>	LEXINGTON	52-50	Mar. 3	<b>Mississippi</b>	Oxford	7:35 (ESPN)
Jan. 8	<b>Alabama</b>	Tuscaloosa	67-74	Mar. 5	<b>Louisiana State</b>	Baton Rouge	8:30
Jan. 10	<b>Mississippi State</b>	Starkville	59-53 (OT)	Mar. 10-13	<b>SEC Tournament</b>	Birmingham	TBA

All times EST and p.m.

\*Delayed TV



# CATS LOVE IT.



THE DAIRY FARM  
FAMILIES  
OF KENTUCKY

american dairy association



## WE'RE PROUD OF OUR KENTUCKY WILDCATS!

### THE DAIRY FARM FAMILIES OF KENTUCKY AMERICAN DAIRY ASSOCIATION



The 1982-83 University of Kentucky Wildcats: front row, left to right: Volunteer Assistant Jeff Riley, Head Coach Joe B. Hall, Dirk Minniefield, Roger Harden, Troy McKinley, Derrick Hord, Jim Master, Dickie Beal, Associate Coach Leonard Hamilton, Student Manager Roger Thomas. Back row, left to right: Equipment Manager Bill Keightley, Assistant Coach Bob Chambers, Todd May, Tom Heitz, Melvin Turpin, Sam Bowie, Bret Bearup, Kenny Walker, Charles Hurt, Assistant Coach Joe Dean, Trainer Walt McCombs.

*Tune in the "Joe Hall Show"  
for an inside look at the Wildcats  
Brought to you by  
Kentucky's Dairy Farm Families.*

## KENTUCKY ROSTER

No.	Name	Pos.	Ht.	Wt.	Cl.	Age	Exp.	Hometown
10	Dirk Minniefield	G	6-3	180	Sr.	21	3L	Lexington
11	Dicky Beal	G	5-11	170	Jr.	20	2L	Covington
20	Jim Master	G	6-5	175	Jr.	20	2L	Ft. Wayne, Ind.
23	Roger Harden	G	6-1	170	Fr.	18	—	Valparaiso, Ind.
24	Bret Bearup	F	6-9	230	So.	21	1L	London
31	Sam Bowie	C-F	7-1	230	Jr.	21	2L	Lebanon, Pa.
32	Derrick Hord	F	6-6	210	Sr.	22	3L	Bristol, Tenn.
33	Tom Heitz	C-F	6-9	215	Jr.	21	2L	Hamilton, Ind.
34	Kenny Walker	F	6-8	190	Fr.	18	—	Roberta, Ga.
40	Troy McKinley	F	6-6	195	So.	19	1L	Independence
44	Charles Hurt	F	6-6	210	Sr.	21	3L	Shelbyville
54	Melvin Turpin	C	6-11	235	Jr.	22	2L	Lexington

american dairy association



## MAKE YOUR MOVE WITH A WINNER...

Get the jump on your financial needs by making your move to Second National Bank. Ninety-nine years of experience, friendly personnel and comprehensive services have made Second National the banking choice of many successful businesses and individuals.

Visit any of our eleven convenient locations and let our team of professionals put its experience and expertise to work for you.

Second National wishes much success to Coach Hall and the Cats during the 1982-83 season.

Second National Bank and Kentucky Basketball...solid and established.

**Second  
National Bank**

Member F.D.I.C.

## Growing with Kentucky



Reliable Prescription Service  
Since 1921

From our first drug store in London, Kentucky to 48 locations throughout Kentucky, Begley's is dedicated to continued growth while upholding the tradition of old fashioned personal care and friendly service to all our customers.

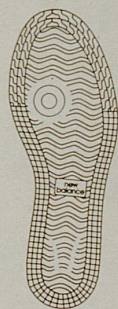




# How James Worthy improved his game over the summer.

Between the NCAA Championships and his professional debut as a Los Angeles Laker, James Worthy took a step to improve his game:

He started wearing the most technically advanced shoe in basketball—the New Balance Pride.

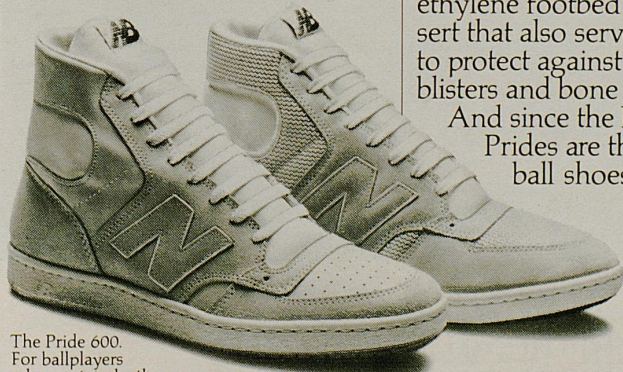


The sine wave outsole gives James great traction.

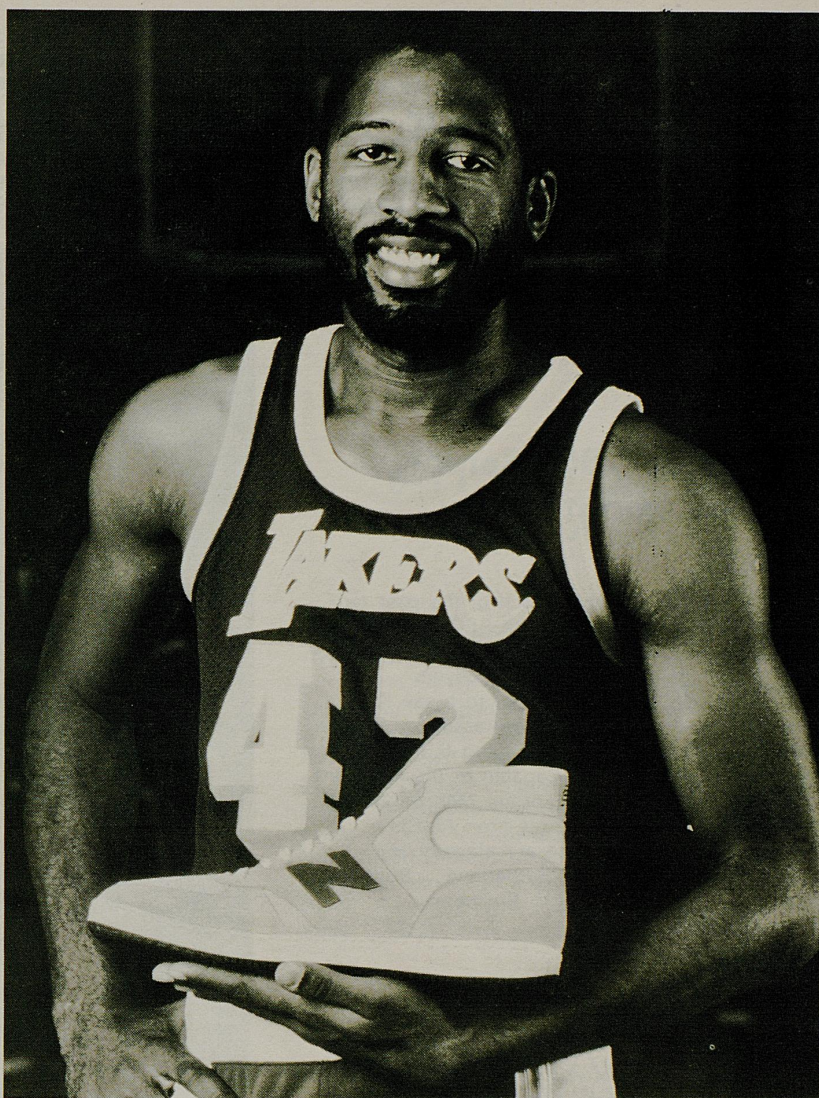
(Given the fact that Mr. Worthy wears a size 14 shoe, this was no small improvement.)

Consider the high performance features the NBA's number one draft choice now enjoys:

For superior upper foot support, the Pride has a unique triple-layer upper. This combination of lining, mesh and leather results in a shoe that retains its shape—and stability—better than any basketball shoe ever has.



The Pride 600. For ballplayers who are into leather.



For superior traction, the Pride has a sine wave outsole made of durable, high-grade rubber.

For unprecedented comfort, the Pride has a polyethylene footbed insert that also serves to protect against blisters and bone spurs.

And since the New Balance Prides are the only basketball shoes available in a



A thickly padded action collar cradles and protects James' Achilles.

variety of widths, James Worthy is now able to get *exactly* the fit he demands from his shoes.

Why not take a tip from a guy destined for greatness in the NBA, and get yourself a pair of Prides.

You'll notice an immediate improvement in *your* game.

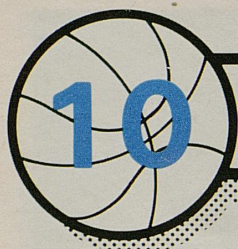


**new balance**  
**PRIDE**

New Balance Inc., Boston, MA 02134

The Pride 500. For ballplayers who think mesh is cool.

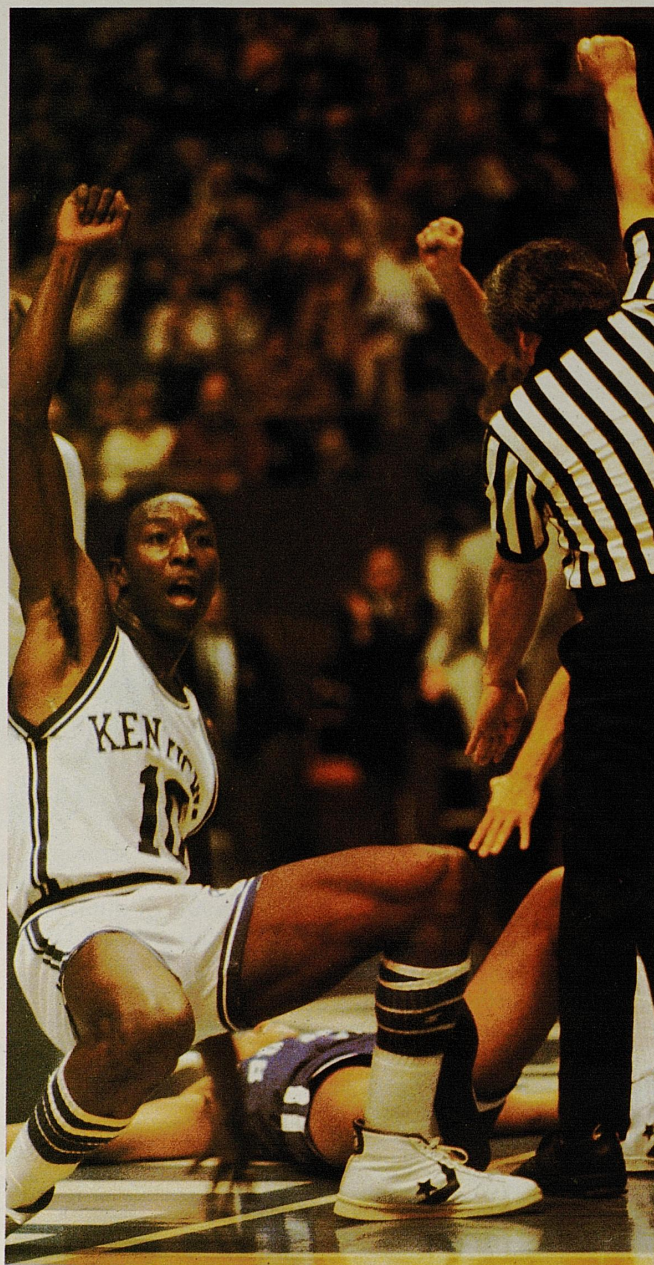




## Dirk Minniefield – Guard

**6-3, 180, Senior  
Lexington, Ky.**

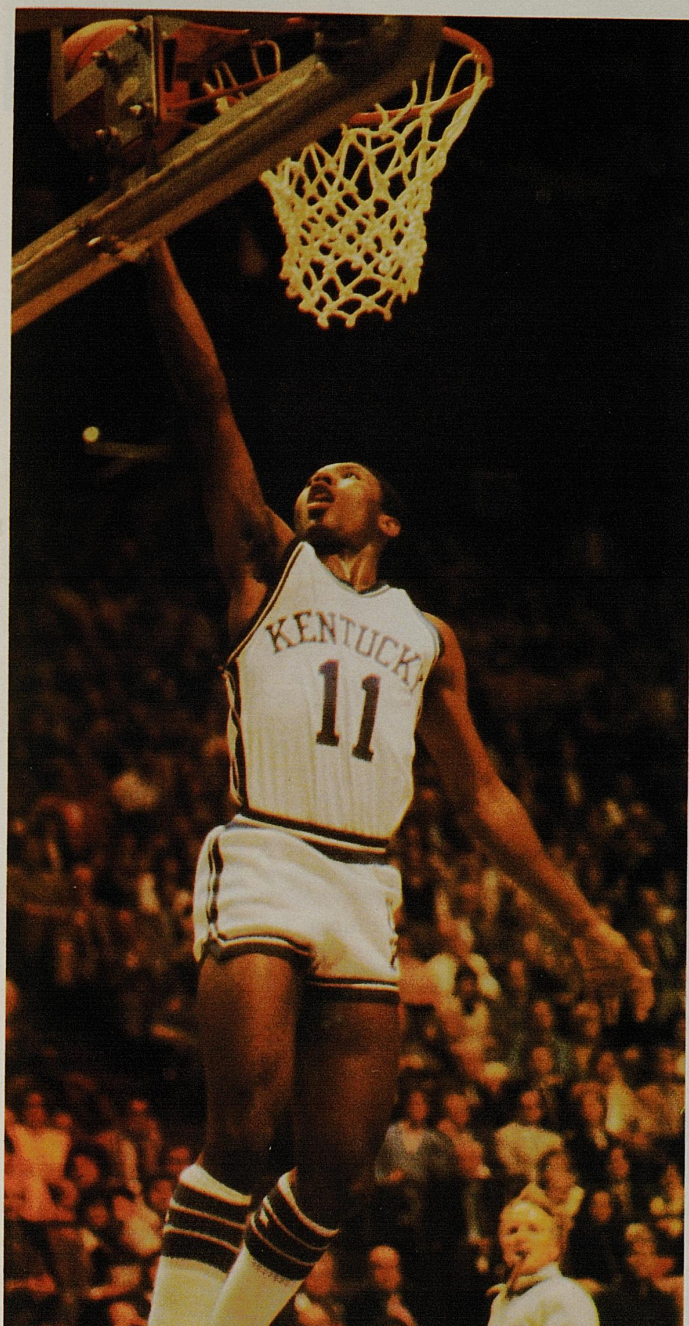
Co-MVP of the squad for each of the past two seasons... Named MVP of the SEC Tournament played last season in Rupp Arena... Also named to All-UKIT team... Member of players' all-conference team... Sure bet to break Kyle Macy's school record for career assists... Ranked second in the league by averaging 6.3 assists per game last season... Capable of playing point guard or second guard... Former "Mr. Basketball" in state of Kentucky... Three-time All-State pick and prep All-America at Lafayette High... High school coach: Jock Sutherland... Born January 17, 1961... Major: Business Administration.



Yr.	G-GS	Minutes	Field Goals	Free Throws	Rebounds	A	PF-D	Points	High
Fr. (79-80)	34-18	691-20.3	68-142-47.9	35- 49-71.4	70-2.1	126	82- 3	171- 5.0	14
So. (80-81)	28-28	890-31.8	118-213-55.4	55- 63-87.3	79-2.8	151	79- 4	291-10.4	20
Jr. (81-82)	30-30	1034-34.5	128-251-51.0	84-111-75.7	94-3.1	188	90- 4	340-11.3	25
Career	92-76	2615-28.4	314-606-51.8	174-213-78.0	243-2.6	465	151-11	800- 8.7	25

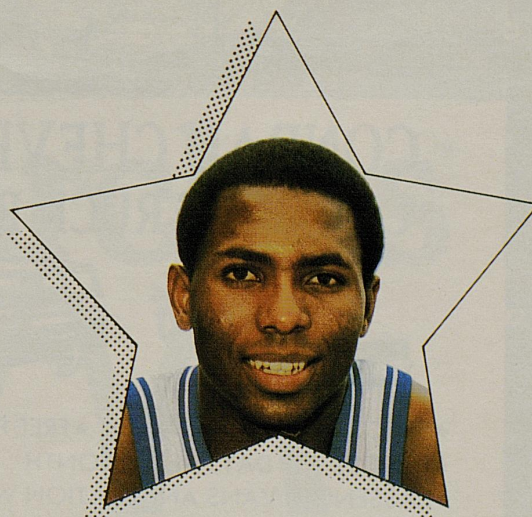


# Dicky Beal - Guard



**5-11, 170, Junior  
Covington, Ky.**

Played in 29 games last season, starting one... Averaged 3.3 points per game and was tied for second on the team with 54 assists... Scored career high 12 points against Auburn in the SEC Tournament... Earned UK's Sixth Man Award three times last season... Started six games as a freshman and made All-UKIT team that year... Exceptional quickness and leaping ability... Prep All-American at Covington Holmes High... Led Holmes to 33-3 record and state tournament as a senior... High school coach: Reynolds Flynn... Born: September 18, 1962... Major: Arts and Sciences.



Yr.	G-GS	Minutes	Field Goals	Free Throws	Rebounds	A	PF-D	Points	High
Fr. (80-81)	27-6	344-12.7	23- 52-44.2	24-42-57.1	19-0.7	50	44-2	70-2.6	9
So. (81-82)	29-1	360-12.4	38- 78-48.7	19-33-57.6	23-0.8	54	44-1	95-3.3	12
Career	56-7	704-12.6	61-130-46.4	43-75-57.3	42-0.8	104	88-3	165-2.9	12

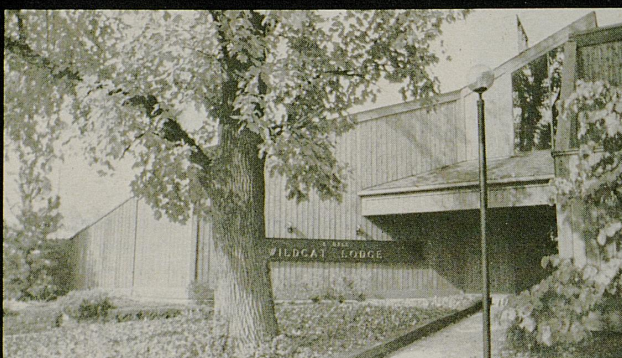


## Hubbuck's Interior design

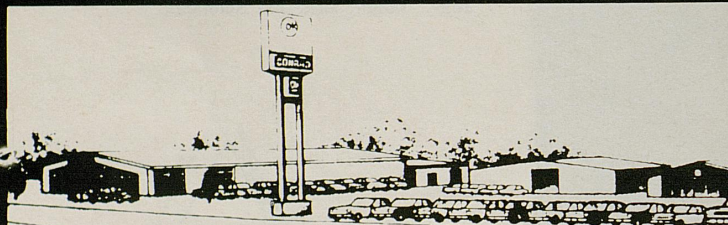
882 East High Street  
in Chevy Chase  
Lexington, Kentucky 40502  
269-2306

324 West Main  
Louisville, Kentucky 40202

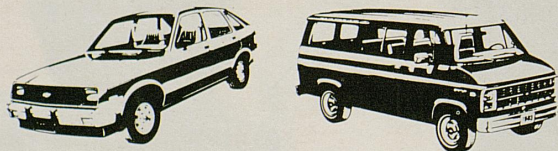
1100 Walnut  
Owensboro, Kentucky 42301



Wildcat Lodge



## CONRAD CHEVROLET CAR AND TRUCK RENTAL



- ★ SPECIAL WEEKEND RATES    ★ FREE PICK-UP & DELIVERY
- ★ RENT BY THE DAY, WEEK, MONTH
- ★ PASSENGER VANS AND STATION WAGONS

**269-4634**    2800 RICHMOND Rd.  
Just Off New Circle



**RUSSELL RICE**  
Sports Information  
Staff Director

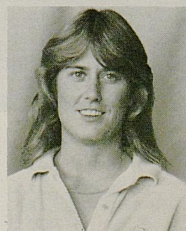
Russell Rice was named sports information director at UK in May, 1969, after serving two years as assistant to Ken Kuhn. Rice came to UK from the **Lexington Leader**, where he was a general reporter eight years and sports editor five years.

A three-sport letterman at Paintsville's Van Lear High, Rice was graduated from UK after a stint in the U. S. Marine Corps during World War II.

An authority on Kentucky basketball and football, Russell has authored several books, including his latest work: "The Wildcat Legacy, A Pictorial History of Kentucky Basketball," published this fall. Others include: "The Wildcats: A Story of Kentucky Football," "The Big Blue Machine: A Story of Kentucky Basketball," the Kentucky portion of "The SEC: A Pictorial History of Southeastern Conference Football," and "Joe B. Hall: My Own Kentucky Home."

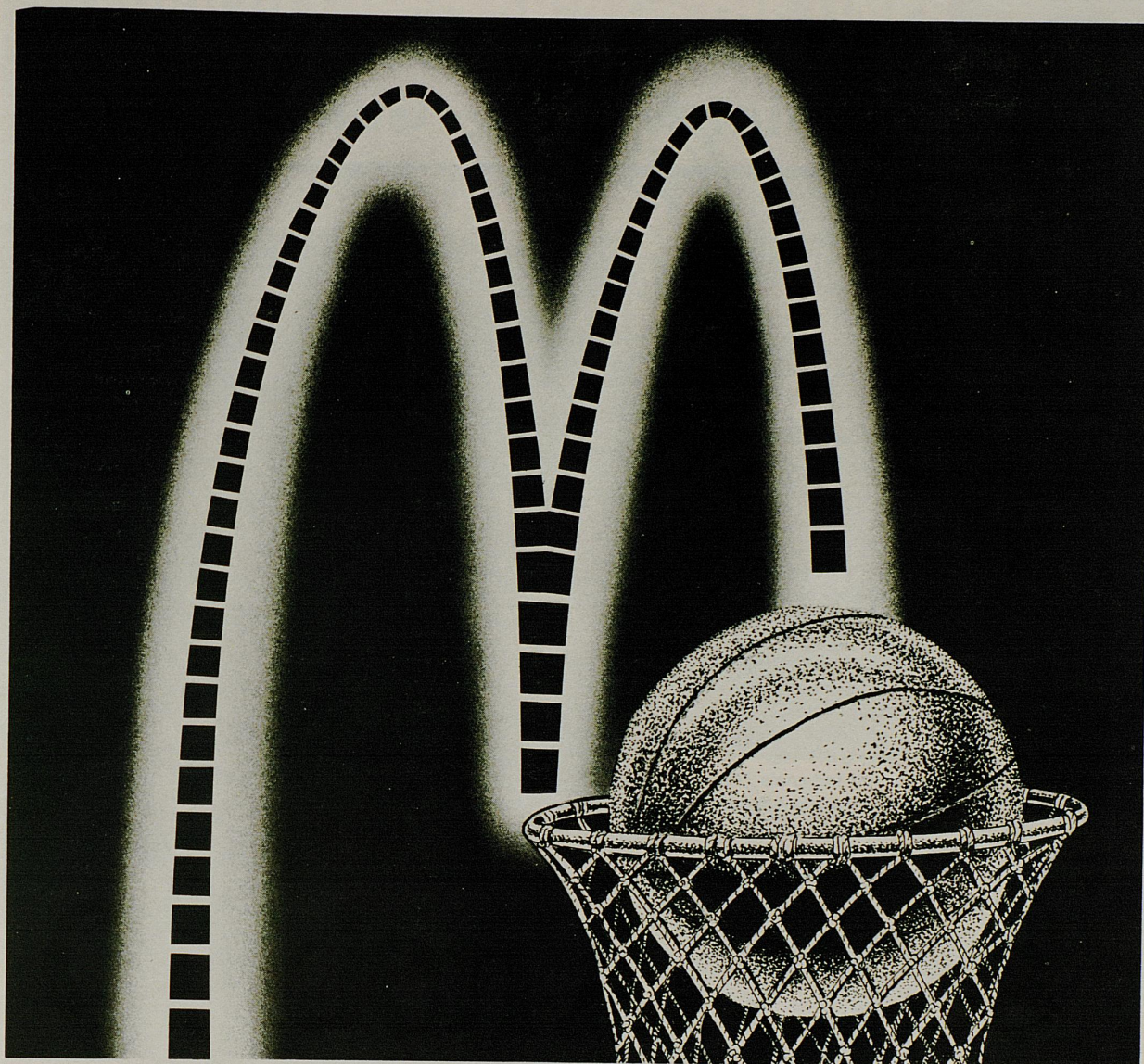


**RANDY STACY**  
Asst. Sports  
Information  
Director



**RENA KOIER**  
Asst. Sports  
Information  
Director





# Golden Arches<sup>TM</sup>

Real Crowd Pleasers.



OF THE BLUEGRASS

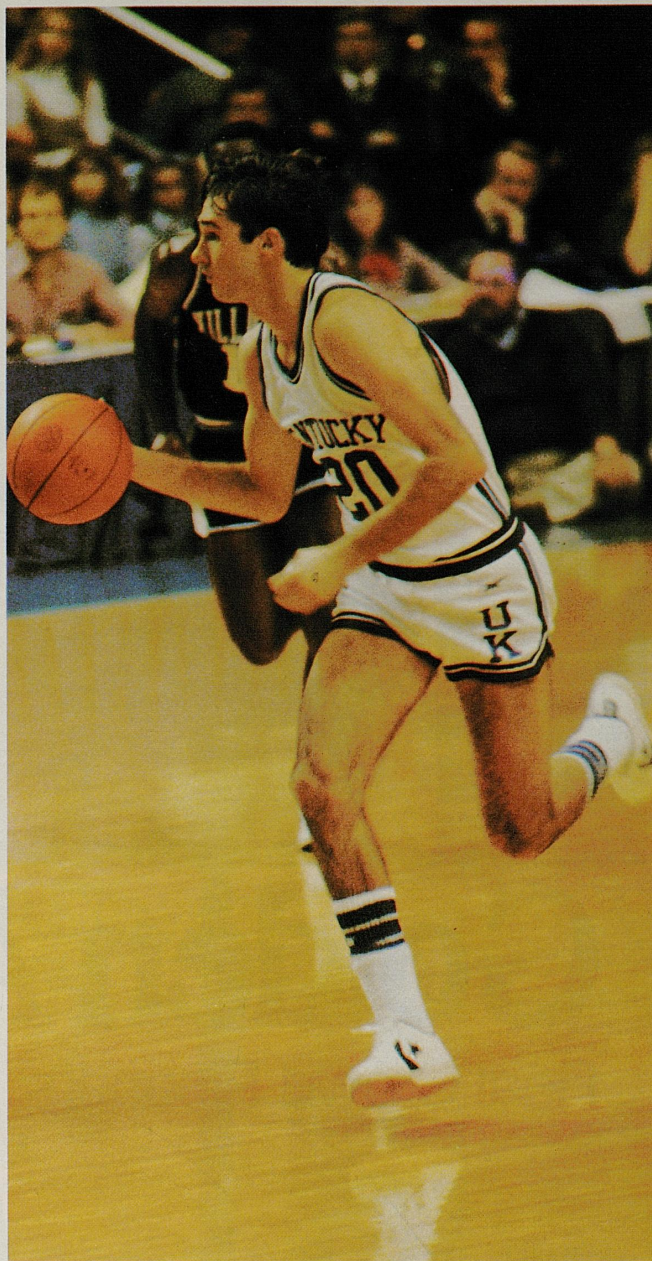
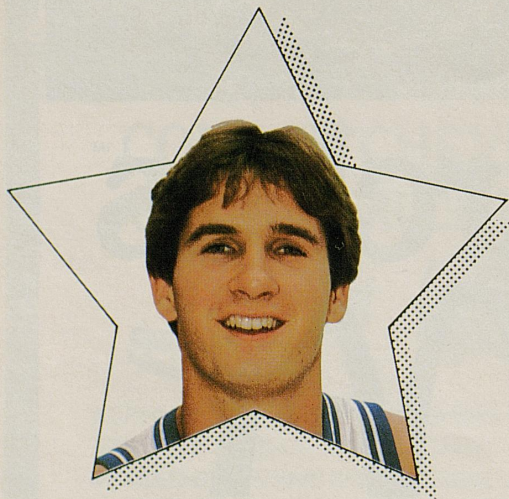




## Jim Master - Guard

**6-5, 175, Junior  
Ft. Wayne, Ind.**

Started 29 of UK's 30 games in '81-82...  
Second on the team with 13.4 scoring average...  
Won SEC free throw title with 89.6% accuracy... Hit 40 consecutive free throws from Dec. 12, 1981 through Jan. 20, 1982 to break Kyle Macy's school record and establish the second longest streak in league history...  
Entered the season with a streak of 13 straight charity tosses... Named to All-UKIT last season... Prep All-America and Indiana's "Mr. Basketball" at Harding High... Led South team to silver medal in 1981 during basketball competition at the National Sports Festival...  
High school coach: Harlan Frick... Born: March 16, 1962... Major: Arts and Sciences.



Yr.	G-GS	Minutes	Field Goals	Free Throws	Rebounds	A	PF-D	Points	High
Fr. (80-81)	27- 3	512-19.0	64-142-45.1	48- 56-85.7	26-1.0	25	43-0	176- 6.5	16
So. (81-82)	30-29	969-32.3	153-315-48.6	95-106-89.6	63-2.1	78	57-2	401-13.4	29
Career	57-32	1480-26.0	217-457-47.5	143-162-88.3	89-1.6	103	100-2	577-10.1	29



## AGRICULTURE'S SIGN OF THE TIMES...



**Fourth Street Fertilizer Co.**  
Lexington  
Paynes Depot  
Shelbyville  
Lebanon  
Warsaw  
Gallatin County Farm Supply

**Fourth Street Implement Co.**  
Ford Tractors & Equipment  
Sales Parts Service  
993 Nandino Boulevard  
Lexington

**Fourth Street Tobacco Whse. Co.**  
Lexington  
Marshall's Tobacco Warehouse  
Gentry Tobacco Warehouse  
Fourth Street Tobacco Warehouse  
Lebanon  
Fourth Street Tobacco Warehouse  
Paris  
Paris Independent Tobacco Warehouse



# We love ya 'cats!

The Clay Ward Agency.  
Insuring the world's finest  
bloodstock for half a century.

Since 1931. Equine Insurance through Lloyds of London.

BOX 294/PARIS, KY. 40361  
PHONE (606) 987-1861  
TELEX 218-460  
CABLE CLAYWARD

DAVID C. PARRISH  
SHACKELFORD PARRISH  
LONNIE OWENS  
W. BRUCE ISAACS





## Roger Harden – Guard

**6-1, 170, Freshman  
Valparaiso, Ind.**

Indiana's "Mr. Basketball" last season at Valparaiso High... Played in Kentucky-Indiana All-Star Series... Consensus All-State pick... Named to numerous prep All-America teams... Averaged 14.0 as a sophomore, 21.1 as a junior and 27.6 points a game as a senior... Excellent passer and outside shooter... Good court sense... Coach Hall calls him "a leader on the floor"... His brother Rob played at Florida before transferring to Valparaiso University... High school coach: Skip Collins... Born: December 19, 1963... Major: Political Science.



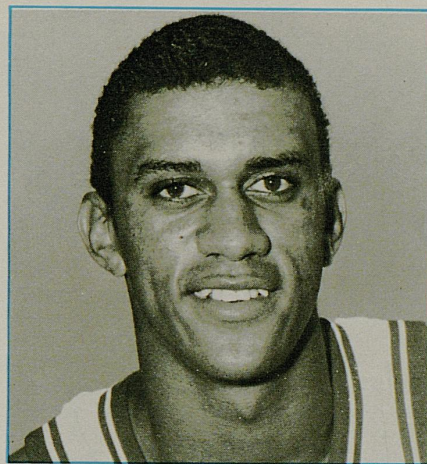


# Player of the Week

## MOST VALUABLE PLAYER

### KENNY WALKER

The freshman "Skywalker" from Roberta, Ga., had an unbelievable 18 rebounds against Vanderbilt last Saturday night, just one short of the Rupp Arena record held by Mike Phillips. Kenny also scored 16 points against the Commodores, hitting three of five from the field and 10 of 12 from the free throw line.



**YOU'RE  
Wendy's  
KIND OF  
PEOPLE™**

## SIX LOCATIONS TO SERVE YOU

- 1499 Boardwalk
- 1792 Alexandria Drive
- 757 New Circle Road
- 3010 Richmond Road
- 2575 Nicholasville Road
- Eastern By-Pass, Richmond, Ky.

THIS COUPON GOOD FOR A

**FREE LARGE**

*Coca-Cola*

when you buy any sandwich  
and fries at

**Wendy's®**

EXPIRES  
MARCH 31, 1983

*Good at participating Wendy's. Not good with any other offer.*



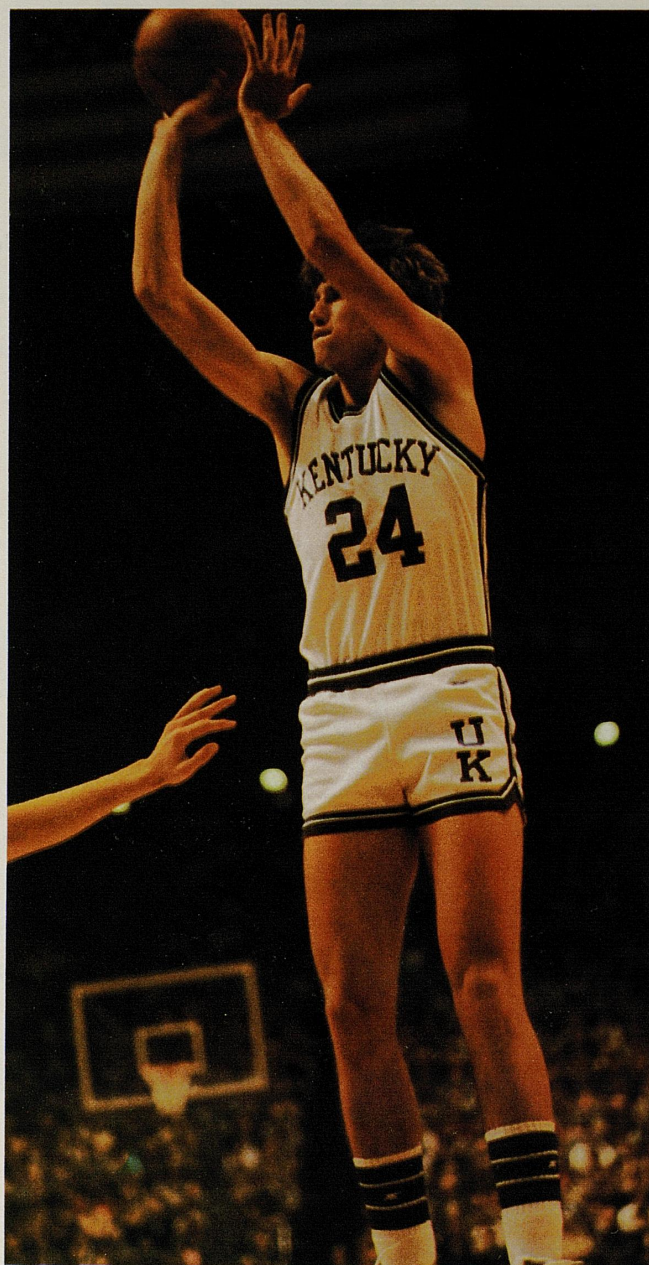




## Bret Bearup – Forward

**6-9, 230, Sophomore  
Centerport, N.Y.**

Chose to red-shirt last season... Played in 26 of 28 games as a freshman in 1980-81... Scored in double figures three times as a reserve forward... Family has moved from Centerport, N.Y., to London, Ky.... Participated with the South team in the National Sports Festival in 1981... Two-time All-State and prep All-America at Harborfields High on Long Island... Ranked in top five percent nationally on the National Merit Test as high school senior... Benefited greatly from hard work in UK's weight program by adding needed strength for rugged inside play in SEC... High school coach: Joe Mayer... Born: November 17, 1961... Major: Arts and Sciences.



Yr.	G-GS	Minutes	Field Goals	Free Throws	Rebounds	A	PF-D	Points	High
Fr. (80-81)	26-0	258-9.9	28-74-37.8	15-24-62.5	43-1.7	8	35-1	71-2.7	12





# Airdrie Stud

## The Airdrie Stallions

An Eldorado  
Barrera  
Bold L.B.  
Borzoï  
Doc Sylvester  
Doonesbury  
Elocutionist  
Far North  
Fifth Marine  
Guilty Conscience

Highland Park \*  
Irish Tower  
Junction  
Key to the Kingdom  
Kirtling  
Matsadoon  
Nain Bleu  
Nikoli  
Northjet

Providential II  
Rich Cream  
San Fellou  
Silver Hawk  
Star Spangled  
Tanthem  
Torsion  
To the Quick  
Upper Nile

\* In Training

Mr. and Mrs. Brereton C. Jones • Box 487, Midway, Ky. 40347 • (606) 873-7270.

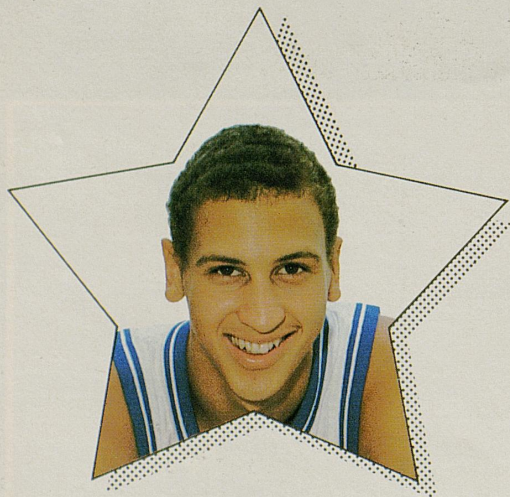




## Sam Bowie – Center

**7-1, 230, Junior  
Lebanon, Pa.**

Missed last season while suffering from a small, incomplete fracture of his left tibia (shin bone)... Recovered sufficiently to practice with the team prior to the tour of the Orient last summer, but had a cast reapplied in early August due to a weakening in the area and underwent surgery in October... When he returns, he should be one of college basketball's outstanding players... Named to most All-America teams in 1980-81... Two-time All-SEC... Averaged 12.9 ppg as freshman and 17.4 in sophomore season... Led U.S. Olympic Team to five wins in "Gold Medal Games" in 1980... A member of the high school division of the Basketball Hall of Fame... Named to every prep All-America team after his senior season at Lebanon High... High school coach: Chic Hess... Born: March 17, 1961... Major: Arts and Sciences.



Yr.	G-GS	Minutes	Field Goals	Free Throws	Rebounds	A	PF-D	Points	High
Fr. (79-80)	34-33	886-26.1	165-311-53.1	110-144-76.4	276-8.1	26	110- 8	440-12.9	27
So. (80-81)	28-28	895-32.0	185-356-52.0	118-164-72.0	254-9.1	39	80- 2	488-17.4	29
Career	62-61	1781-28.7	350-667-52.4	228-308-74.0	530-8.5	65	190-10	928-15.0	29







## Walmac-Warnerton Stallions

Alleged  
Brent's Prince  
Fluorescent Light  
French Colonial  
George Navonod

Inverness Drive  
Lines of Power  
Miswaki  
Monteverdi  
Nureyev

Red Ryder  
Shecky Greene  
Sportin' Life  
Stalwart

 **Walmac Int'l.**  
**Warnerton**   
ASSOCIATED FARMS

Inquiries to John T. L. Jones Jr.  
3395 Paris Pike Lexington, Ky. 40511  
Phone (606) 299-0473

## The Pager



**Comtel**

606-233-2337

220 E. Second, Lexington





"Coca-Cola" and "Coke" are registered trade-marks which identify the same product of The Coca-Cola Company.

# KENTUCKY

		FG														FT						PF			TP	
10	DIRK MINNIEFIELD 6-3 Senior Guard	1	2	3	4	5	6	7	8	9	10	11	12	13	14	15	1	2	3	4	5	6	1	2	3	
																	7	8	9	10	11	12	4	5		
11	DICKY BEAL 5-11 Junior Guard	1	2	3	4	5	6	7	8	9	10	11	12	13	14	15	1	2	3	4	5	6	1	2	3	
																	7	8	9	10	11	12	4	5		
20	JIM MASTER 6-5 Junior Guard	1	2	3	4	5	6	7	8	9	10	11	12	13	14	15	1	2	3	4	5	6	1	2	3	
																	7	8	9	10	11	12	4	5		
23	ROGER HARDEN 6-1 Freshman Guard	1	2	3	4	5	6	7	8	9	10	11	12	13	14	15	1	2	3	4	5	6	1	2	3	
																	7	8	9	10	11	12	4	5		
24	BRET BEARUP 6-9 Sophomore Forward	1	2	3	4	5	6	7	8	9	10	11	12	13	14	15	1	2	3	4	5	6	1	2	3	
																	7	8	9	10	11	12	4	5		
32	DERRICK HORD 6-6 Senior Forward	1	2	3	4	5	6	7	8	9	10	11	12	13	14	15	1	2	3	4	5	6	1	2	3	
																	7	8	9	10	11	12	4	5		
33	TOM HEITZ 6-9 Junior Center-Forward	1	2	3	4	5	6	7	8	9	10	11	12	13	14	15	1	2	3	4	5	6	1	2	3	
																	7	8	9	10	11	12	4	5		
34	KENNY WALKER 6-8 Freshman Forward	1	2	3	4	5	6	7	8	9	10	11	12	13	14	15	1	2	3	4	5	6	1	2	3	
																	7	8	9	10	11	12	4	5		
40	TROY MCKINLEY 6-6 Sophomore Forward	1	2	3	4	5	6	7	8	9	10	11	12	13	14	15	1	2	3	4	5	6	1	2	3	
																	7	8	9	10	11	12	4	5		
44	CHARLES HURT 6-6 Senior Forward	1	2	3	4	5	6	7	8	9	10	11	12	13	14	15	1	2	3	4	5	6	1	2	3	
																	7	8	9	10	11	12	4	5		
54	MELVIN TURPIN 6-11 Junior Center	1	2	3	4	5	6	7	8	9	10	11	12	13	14	15	1	2	3	4	5	6	1	2	3	
																	7	8	9	10	11	12	4	5		
		1	2	3	4	5	6	7	8	9	10	11	12	13	14	15	1	2	3	4	5	6	1	2	3	
																	7	8	9	10	11	12	4	5		
		1	2	3	4	5	6	7	8	9	10	11	12	13	14	15	1	2	3	4	5	6	1	2	3	
																	7	8	9	10	11	12	4	5		
	TOTALS																									



# Sit!



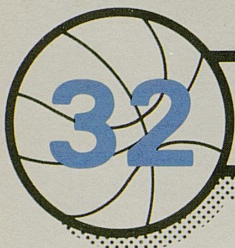
		FG								FT								PF	TP
10	TYRONE BEAMAN 5-11 Junior Guard	1	2	3	4	5	6	7	8	1	2	3	4	5	6	1	2	3	
		9	10	11	12	13	14	15		7	8	9	10	11	12	4	5		
14	DALE ELLIS 6-7 Senior Forward	1	2	3	4	5	6	7	8	1	2	3	4	5	6	1	2	3	
		9	10	11	12	13	14	15		7	8	9	10	11	12	4	5		
21	MICHAEL BROOKS 6-2 Junior Guard	1	2	3	4	5	6	7	8	1	2	3	4	5	6	1	2	3	
		9	10	11	12	13	14	15		7	8	9	10	11	12	4	5		
23	MYRON CARTER 6-2 Sophomore Guard	1	2	3	4	5	6	7	8	1	2	3	4	5	6	1	2	3	
		9	10	11	12	13	14	15		7	8	9	10	11	12	4	5		
25	SETH McDONALD 6-9 Junior Forward	1	2	3	4	5	6	7	8	1	2	3	4	5	6	1	2	3	
		9	10	11	12	13	14	15		7	8	9	10	11	12	4	5		
30	TYRONE HARPER 6-7 Freshman Forward	1	2	3	4	5	6	7	8	1	2	3	4	5	6	1	2	3	
		9	10	11	12	13	14	15		7	8	9	10	11	12	4	5		
31	KEVIN WOODS 6-5 Sophomore Forward	1	2	3	4	5	6	7	8	1	2	3	4	5	6	1	2	3	
		9	10	11	12	13	14	15		7	8	9	10	11	12	4	5		
32	KIRK NALER 6-8 Sophomore Forward	1	2	3	4	5	6	7	8	1	2	3	4	5	6	1	2	3	
		9	10	11	12	13	14	15		7	8	9	10	11	12	4	5		
33	DAN FEDERMANN 6-10 Junior Center	1	2	3	4	5	6	7	8	1	2	3	4	5	6	1	2	3	
		9	10	11	12	13	14	15		7	8	9	10	11	12	4	5		
34	ROB JONES 6-7 Freshman Forward	1	2	3	4	5	6	7	8	1	2	3	4	5	6	1	2	3	
		9	10	11	12	13	14	15		7	8	9	10	11	12	4	5		
40	WILLIE BURTON 6-7 Junior Forward	1	2	3	4	5	6	7	8	1	2	3	4	5	6	1	2	3	
		9	10	11	12	13	14	15		7	8	9	10	11	12	4	5		
41	WILLIAM MILLS 6-6 Freshman Forward	1	2	3	4	5	6	7	8	1	2	3	4	5	6	1	2	3	
		9	10	11	12	13	14	15		7	8	9	10	11	12	4	5		
		1	2	3	4	5	6	7	8	1	2	3	4	5	6	1	2	3	
		9	10	11	12	13	14	15		7	8	9	10	11	12	4	5		
	TOTALS																		

# TENNESSEE

Officials: Don Rutledge, Bob Olah and Luis Grillo

CA-COLA BOTTLING CO.

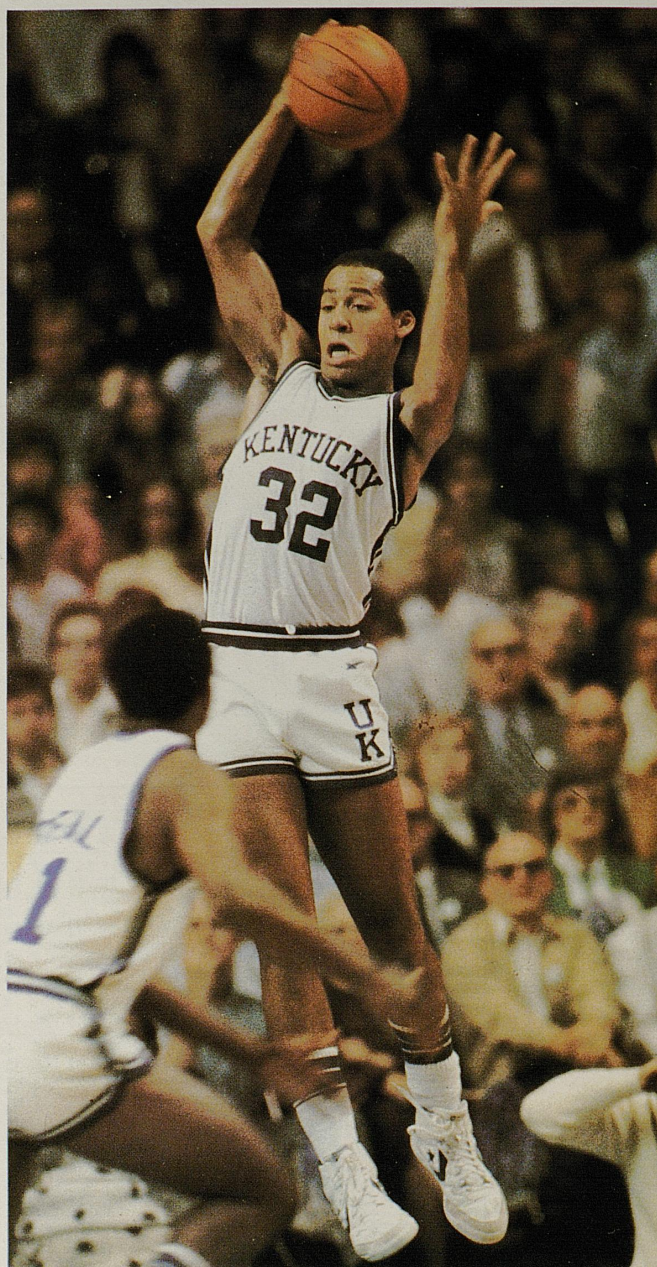
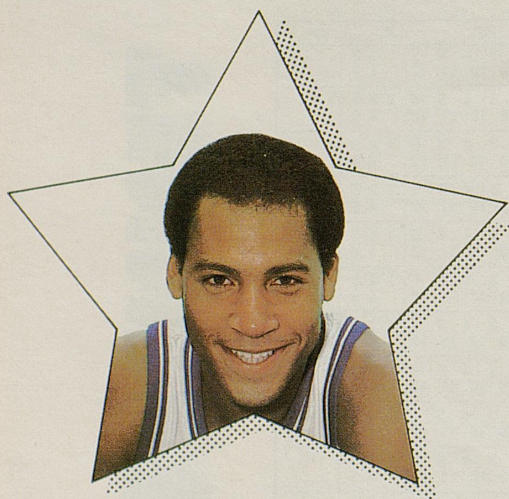




## Derrick Hord – Forward

**6-6, 210, Senior  
Bristol, Tenn.**

All-SEC, All-District (Basketball Writers) and honorable mention All-America last season after leading UK in scoring (16.3 ppg) and minutes played (36.4 per game)... Averaged 18.4 ppg in SEC action... Also hit 56.6 percent from the field during league play as opposed to 49.2 percent overall... Scored career high 28 points against Akron in last season's opener... Named to every prep All-America team as highly recruited player out of Tennessee High in Bristol... Three-time All-State pick, averaged 26.7 ppg in senior campaign... Extremely talented player who is just now reaching his potential... High school coach: Bob Chambers... Born: September 19, 1960... Major: Communications.



Yr.	G-GS	Minutes	Field Goals	Free Throws	Rebounds	A	PF-D	Points	High
Fr. (79-80)	35- 2	677-19.3	78-166-47.0	49- 64-76.6	87-2.5	37	66-2	205- 5.9	18
So. (80-81)	28-21	710-25.4	97-239-40.6	54- 72-75.0	91-3.2	48	56-0	248- 8.9	24
Jr. (81-82)	30-30	1092-36.4	194-374-49.2	102-141-77.9	161-5.4	54	80-0	490-16.3	28
Career	93-53	2479-26.7	369-799-46.2	205-267-76.8	349-3.8	139	202-2	943-10.0	28





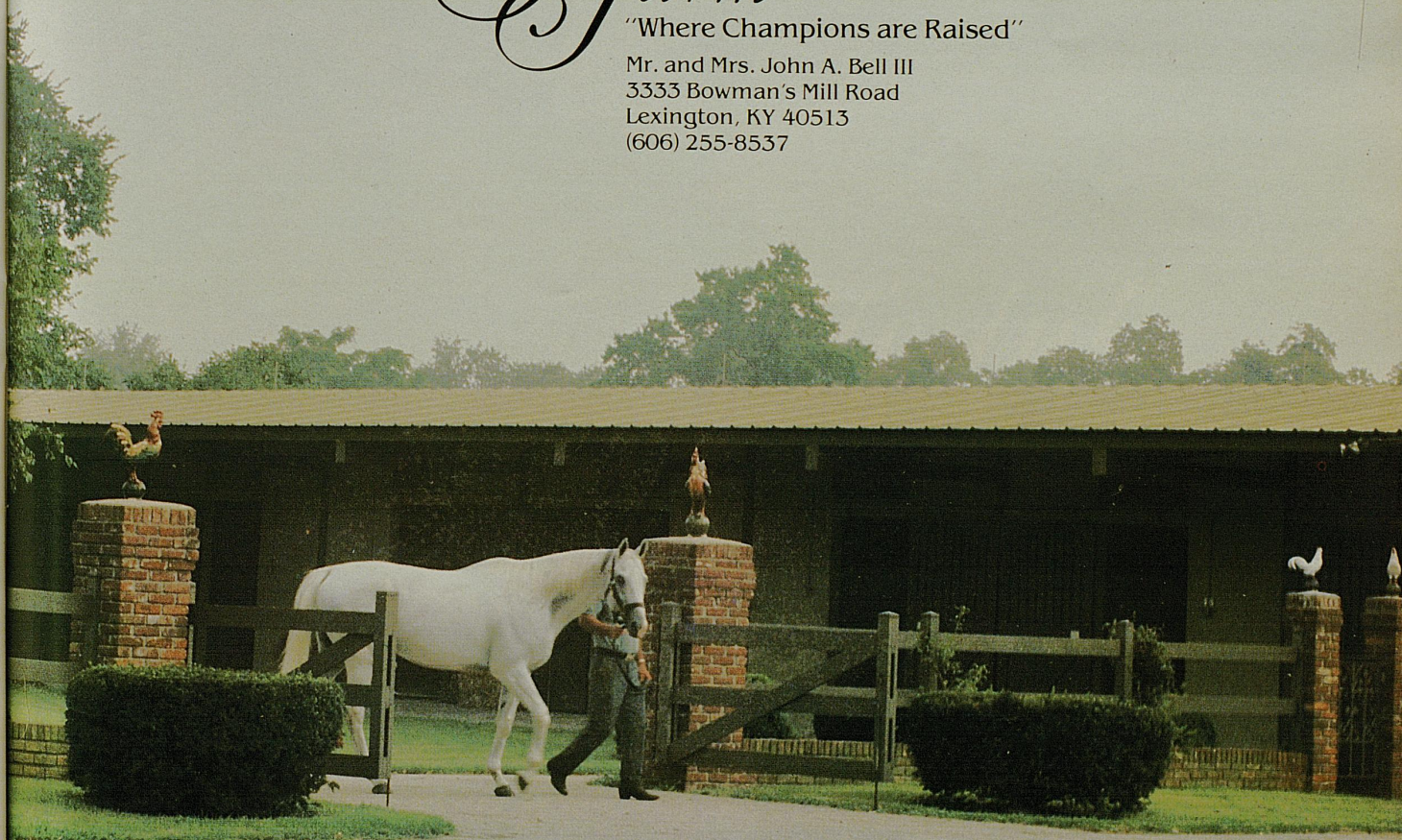
# The Jonabell Farm Stallions

<i>Bailjumper</i>	<i>Nostrum</i>
<i>Cloudy Dawn</i>	<i>One for All</i>
<i>Green Forest</i>	<i>Summing</i>
<i>Hail the Pirates</i>	<i>Vigors</i>

*Jonabell  
Farm*

"Where Champions are Raised"

Mr. and Mrs. John A. Bell III  
3333 Bowman's Mill Road  
Lexington, KY 40513  
(606) 255-8537



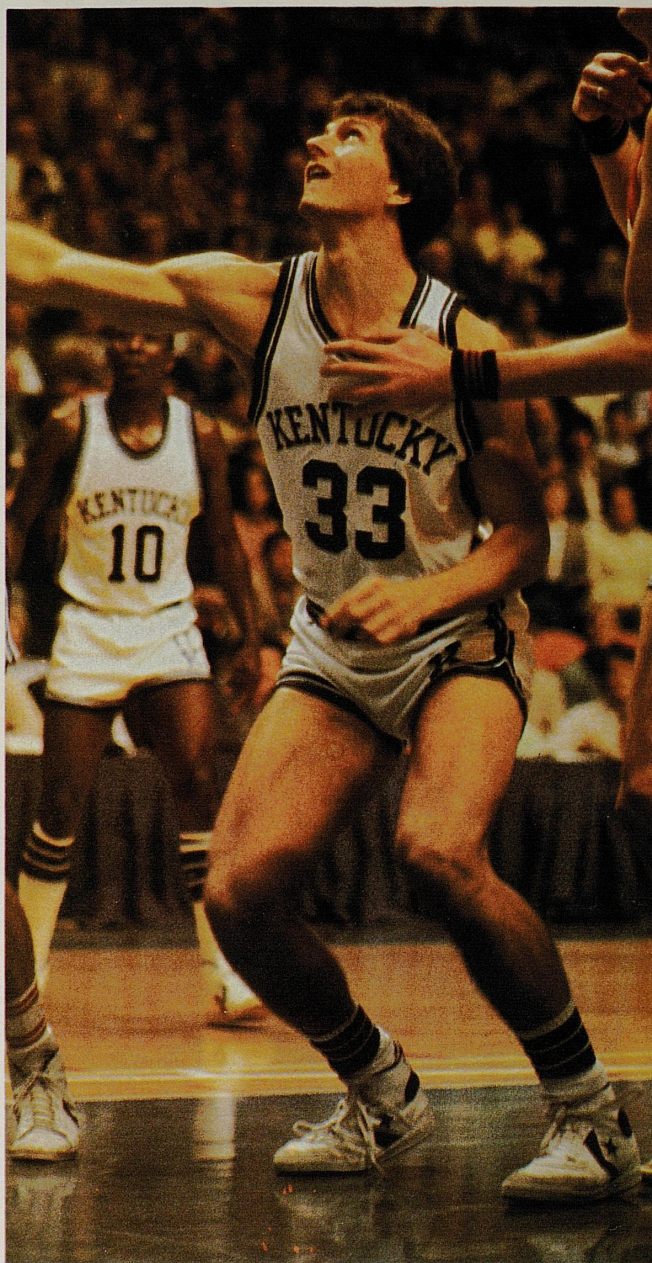




## Tom Heitz – Center/Forward

**6-9, 215, Junior  
Hamilton, Ind.**

Returned to action last season after red-shirting in 1980-81... Appeared in 29 of UK's 30 games as back-up center last season... Averaged 3.1 points per game and 1.9 rebounds per... Scored career high 15 points at Florida... Hit 60 percent from the field and 62.1 from the free throw line... Scored in double figures three times during last summer's trip to the Orient... Has added strength for rigors of long conference schedule... All-Stater at small Hamilton High... Played in Kentucky-Indiana All-Star Series after his senior year... Brother Mike was a seven-footer at West Virginia... Head coach: Steve Grill... Born: February 23, 1961... Major: Business Administration.



Yr.	G-GS	Minutes	Field Goals	Free Throws	Rebounds	A	PF-D	Points	High
Fr. (79-80)	24-0	108-4.5	6-22-27.3	18-33-54.6	20-0.8	3	13-0	30-1.3	5
So. (81-82)	29-0	219-7.6	24-40-60.0	41-66-62.1	54-1.9	5	27-0	89-3.1	15
Career	53-0	327-6.2	30-62-48.4	57-99-59.6	74-1.4	8	40-0	119-2.2	15





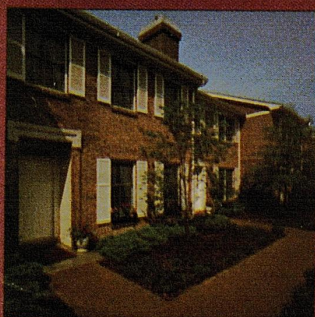
Copyright 1982 Griffin Gate Realty, Inc.



Womens Fashions by Collage

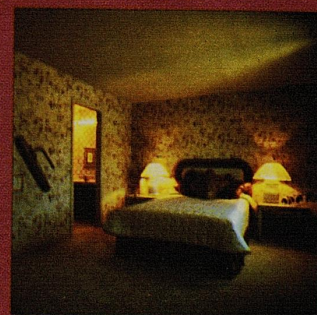
Interior by Barbara Ricke, A.S.I.D.

## *Picture your lifestyle...*



Surround yourself with a lifestyle at Opera House Square that lets the world know who you are. Each townhome at Opera House Square is uniquely created and accented with touches of charm and warmth that distinguishes it from any other. Indulge your individual tastes by choosing your own decor or step into your new townhome that's ready for living with beautifully coordinated furnishings.

At Opera House Square you'll have a home that lets you be you... one that reflects your lifestyle.



## *Opera House Square Townhomes*

541 West Short Street

Located one block from Lexington Center and Vine Center

For further information, contact Griffin Gate Realty, Inc., W. Michael Terry, Real Estate Broker; (606) 259-0411.

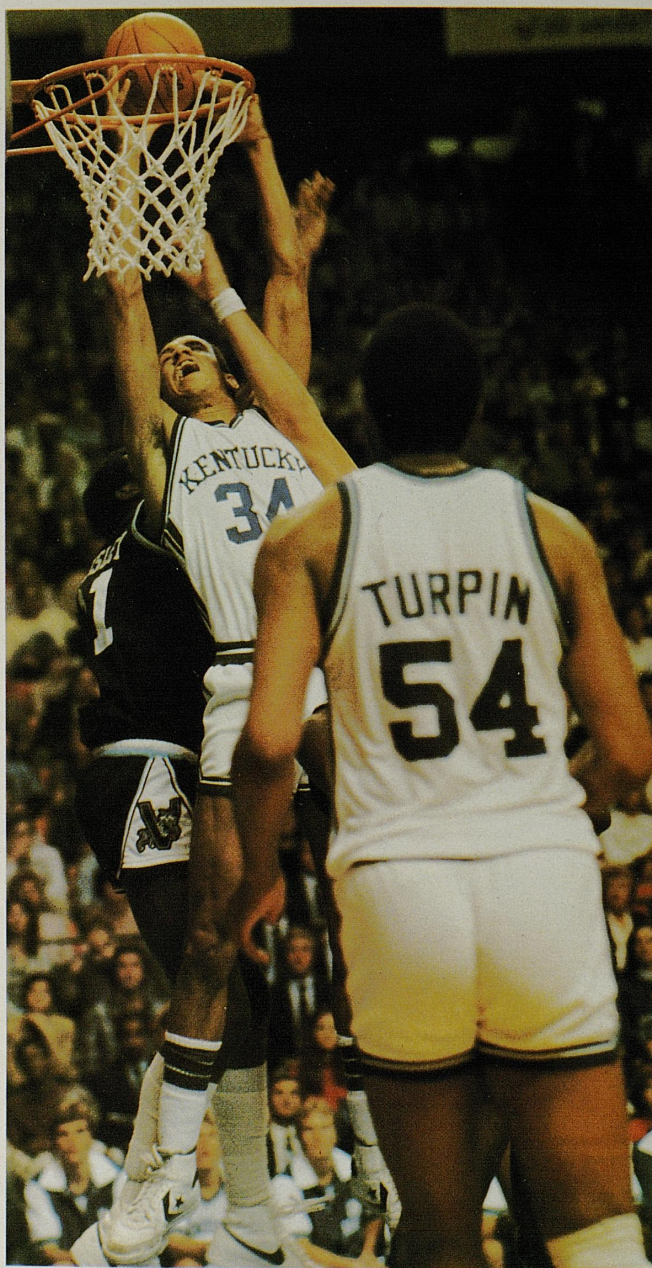
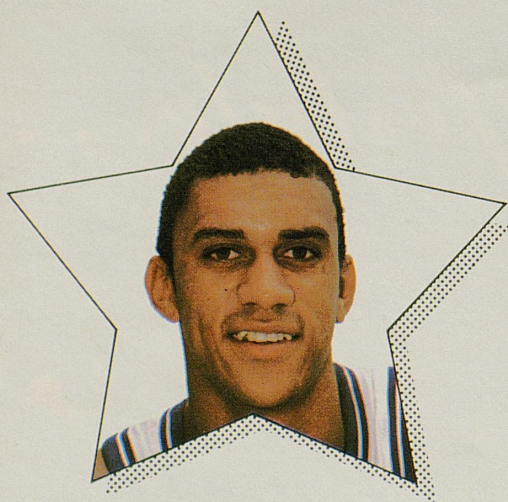




## Kenny Walker – Forward

**6-8, 190, Freshman  
Roberta, Ga.**

High school player of the year in Georgia... Named to most prep All-America teams... Led Crawford Co. High to Georgia AA state titles in junior and senior years... Averaged 28.5 ppg and 18 rebounds per game in senior season... Scored 12.5 ppg as a sophomore and 25.0 ppg as a junior... Scored 20 points and grabbed 14 rebounds in the McDonald's Classic all-star game in Chicago... Member of South team in last summer's National Sports Festival... High school coach: Clyde Zachery... Born: August 18, 1964... Major: Business.





# the Alchemy



Heather Blair photo

*Alchemy: A mythical power or process  
of transforming base metal into gold.*

*United States*  
Rt. 1, Old Frankfort Pike  
Versailles, KY 40383  
Ph. (606) 846-4402, 846-4433  
Telex 218344

*London Office*  
144-146 New Bond St., W1  
Phone 01 493-2689  
Telex 261547

*France*  
Haras de Preaux  
B.P. No. 1, 14290 Orbec  
Normandie. Ph. (31) 32.84.04  
Telex 170160

## STALLIONS:

Caracolero  
Laomedonte  
Lydian  
Mount Hagen  
Northern View  
Rio Carmelo  
Ruthie's Native

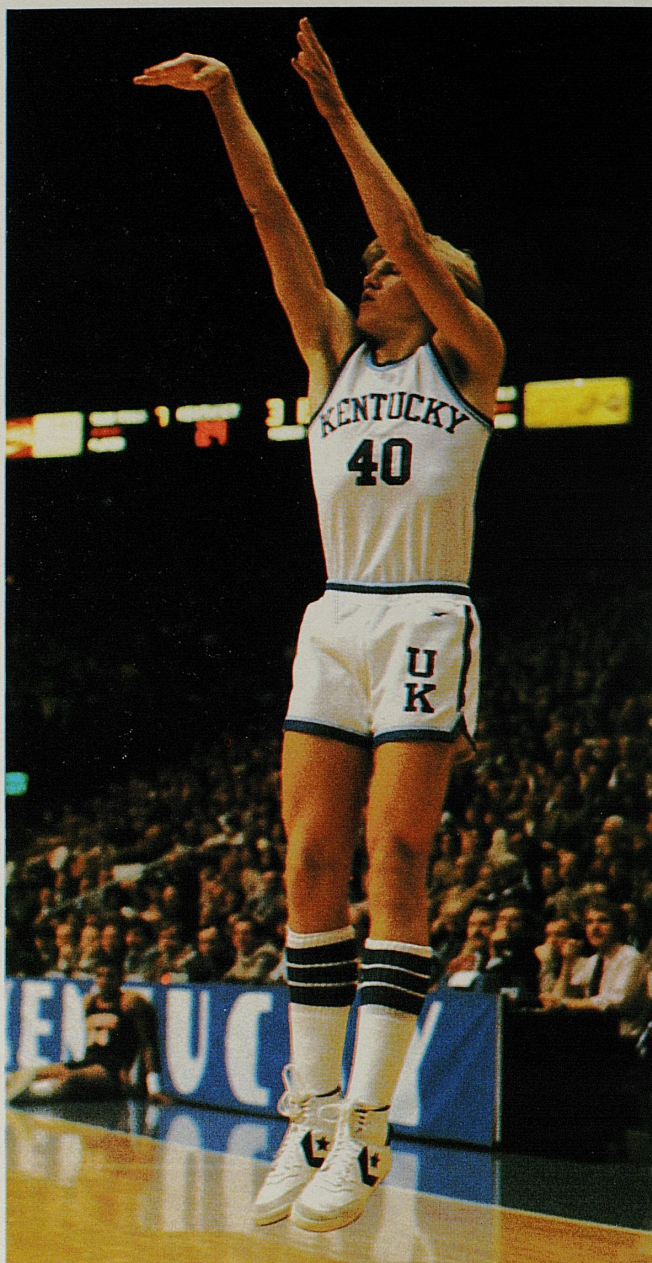




## Troy McKinley – Forward

**6-6, 195, Sophomore  
Independence, Ky.**

Saw action in 16 games as a freshman... Averaged 1.0 ppg... Scored career-high 10 points vs. Jacksonville in the UKIT... Demonstrated outside shooting ability... Scored in double figures twice during tour of the Orient... Led Simon Kenton High to the Kentucky state title as a senior... Was named MVP of the state tournament... Averaged 25.3 ppg and 10.6 rebounds per contest as a senior... Played in Derby Classic and East-West all-star games... Coach Hall called him "one of the finest high school shooters I've seen" following his performance in state championship game... High school coach: Larry Miller... Born: March 21, 1963... Major: Business Administration.



Yr.	G-GS	Minutes	Field Goals	Free Throws	Rebounds	A	PF-D	Points	High
Fr. (81-82)	16-0	48-30	7-15-46.7	2-2-100.0	8-0-5	1	6-0	16-1.0	10





# *You May Not Know The Difference Between Tires. That's Why We Make Sure We Do.*

Let's face it, tires aren't the number one topic of discussion at most cocktail parties. All you know about them is you want good handling, a smooth ride, and lots of mileage. And, of course, you want the best possible price.

Unfortunately, knowing what qualities you want doesn't mean you'll be able to pick the tire that delivers those qualities. So, in most cases, this means you'll have to rely on your tire dealer. And if your dealer just carries one or two brands, guess which tire he'll tell you is best for your car and driving habits?

At NTW, our customers have been trusting us for a long time. We've built our reputation with honest and accurate advice, given by courteous, classroom trained salespeople. Our multiple brand selection assures you of getting exactly the right tire you need. And the buying power that comes

with our \$80 million annual sales means you won't find the tire you want at a better price — anywhere.

Next time you need tires, try NTW. Once we become the tire dealer *you* trust, you still might not want to talk tires at cocktail parties, but you'll know everything you need to know about your tires. You'll know NTW.

Know NTW...  
And You'll Know Tires



North Store

**231-8383**

1251 Georgetown Road (just off New Circle Rd.)

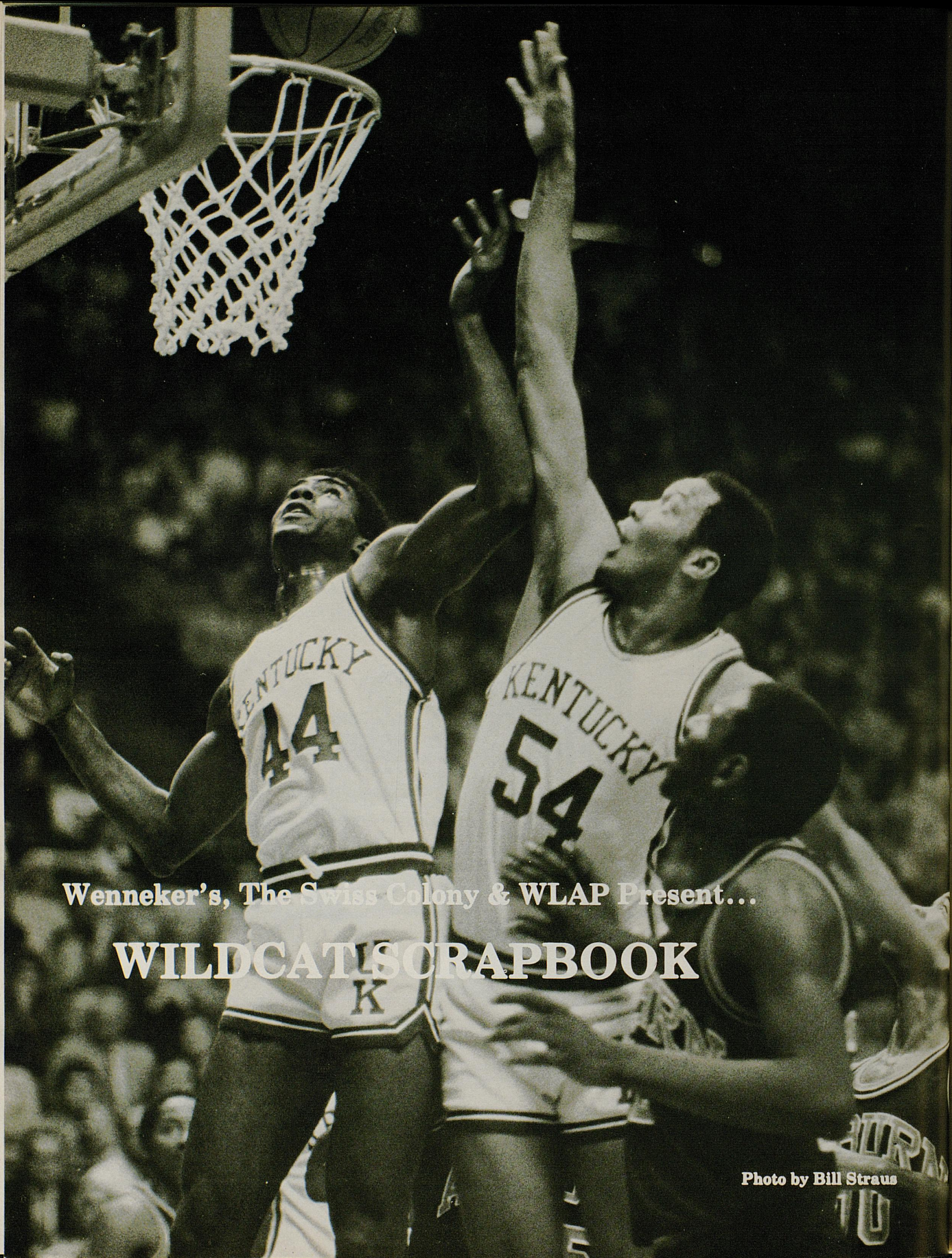
South Store

**276-4318**

2550 Regency Road (behind Steak & Ale, at the end of Moore Drive)

**Tires** by **NTW**  
National Tire Wholesale





Wenneker's, The Swiss Colony & WLAP Present...

# WILDCATSCRAPBOOK

Photo by Bill Straus

Wenneker's

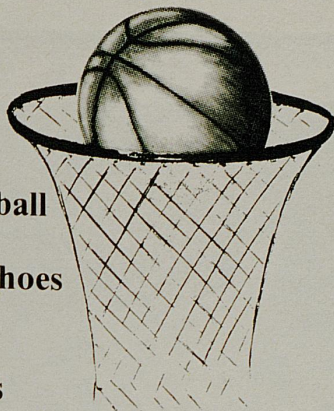
Tu  
Fa  
Le  
an  
Ox  
Ba

An



*wenneker's wenneker's wenneker's*

**U.K. Basketball  
and  
Wenneker's Shoes  
Two  
Kentucky  
Traditions**



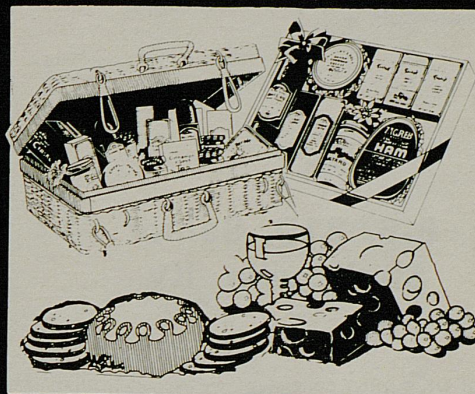
Turfland Mall  
Fayette Mall  
Lexington Mall

and in Louisville at  
Oxmoor Center  
Bashford Manor Mall

American Express • Mastercard • VISA • Shoppers Charge  
Open Evenings 'til 9 • Sunday 1 'til 5 P.M.

**The Swiss Colony**

Fayette Mall



## **Delicious-Delightful-Delectable Gifts and Party Foods**

For a beautiful selection of delicious meats, cheeses and party trays, come to your gourmet gift center, Swiss Colony. Also Gift Pacs for every occasion that we mail anywhere in U.S.A.

Open Evenings 'til 9 • Sunday 1 'til 5 P.M.

**ADULT CONTEMPORARY MUSIC  
with PERSONALITY**

**WLAP**  
**AM 630**

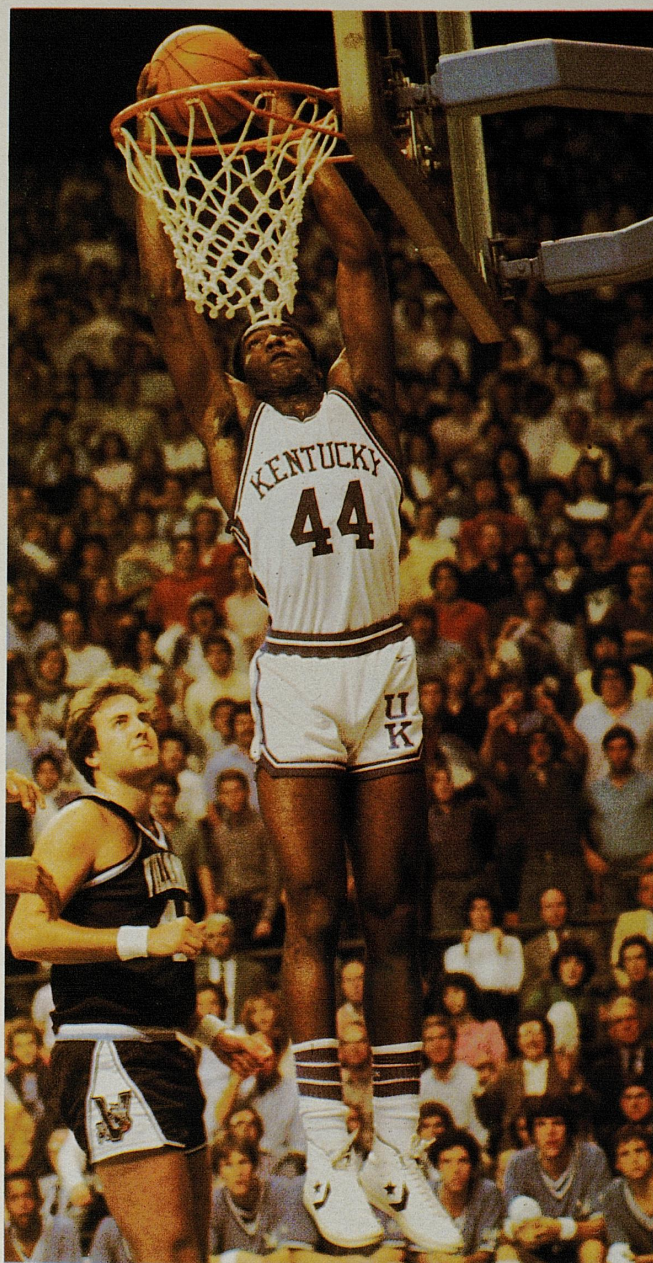
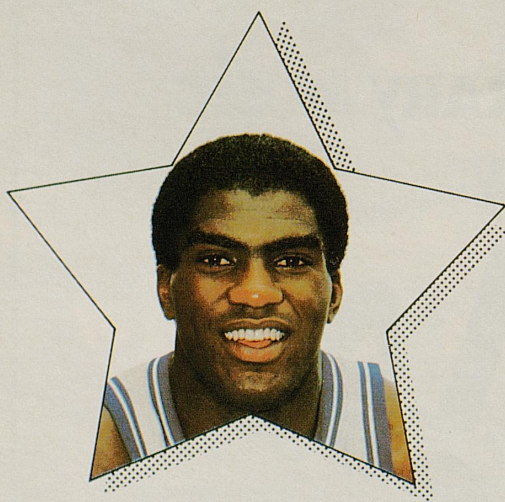




## Charles Hurt – Forward

**6-6, 210, Senior  
Shelbyville, Ky.**

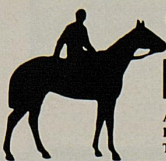
One of UK's most consistent players... Earned Sixth Man Award six times in '81-82... Started only eight games but was fifth on the squad in minutes played... Averaged 6.6 ppg and 4.5 rpg... Matched career high of 18 points vs. North Carolina... Has career shooting marks of 57.6 percent from the field and 64.7 percent from the charity stripe... Improved from 57.9 to 70.7 percent at the free throw line the last two seasons... Great athlete with tremendous jumping ability... Has played in every game since coming to Kentucky... Prep All-America and two-time All-State at Shelby Co. High... MVP in Derby Classic... High School coach: Tom Creamer... Born: March 28, 1961... Major: Arts and Sciences.



Yr.	G-GS	Minutes	Field Goals	Free Throws	Rebounds	A	PF-D	Points	High
Fr. (79-80)	35- 1	475-13.6	52- 86-60.5	32- 52-61.5	87-2.5	14	74- 2	136-3.9	10
So. (80-81)	28-23	683-24.4	79-138-57.2	33- 57-57.9	127-4.5	30	92- 6	191-6.8	18
Jr. (81-82)	30- 8	754-25.1	70-125-56.0	65- 92-70.7	134-4.5	21	80- 2	205-6.8	18
Career	93-32	1912-20.6	201-349-57.6	130-201-64.7	348-3.7	65	246-10	532-5.7	18



# GO CATS YOU "GATO" BELIEVE



**STONE  
FARM**

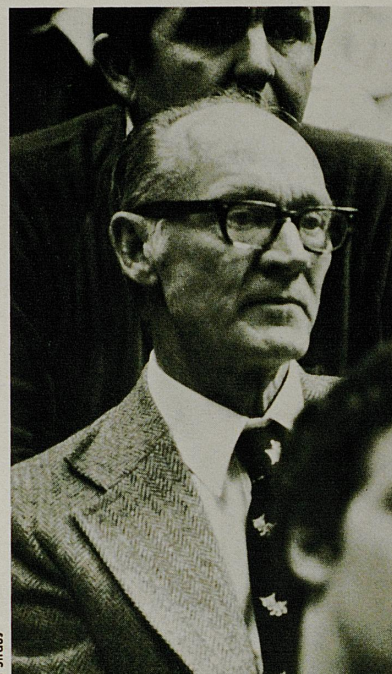
ARTHUR B. HANCOCK, III  
RT. 2, PARIS, KENTUCKY 40361  
TELEPHONE (606) 987-3737

WE'RE TRYING TO RAISE YOU A GOOD HORSE!





# Faces In Th



Photos By Bill Strauss



## Take it from the Pros

You can't score points without perfecting the fundamentals—things like timing, execution and team work. At Domino's Pizza we work fast to give our customers 30 minute delivery that's always free. We believe in nutritious, well balanced meals prepared exactly the way you want them.

So give us a call. Domino's Pizza is the champion of free delivery!

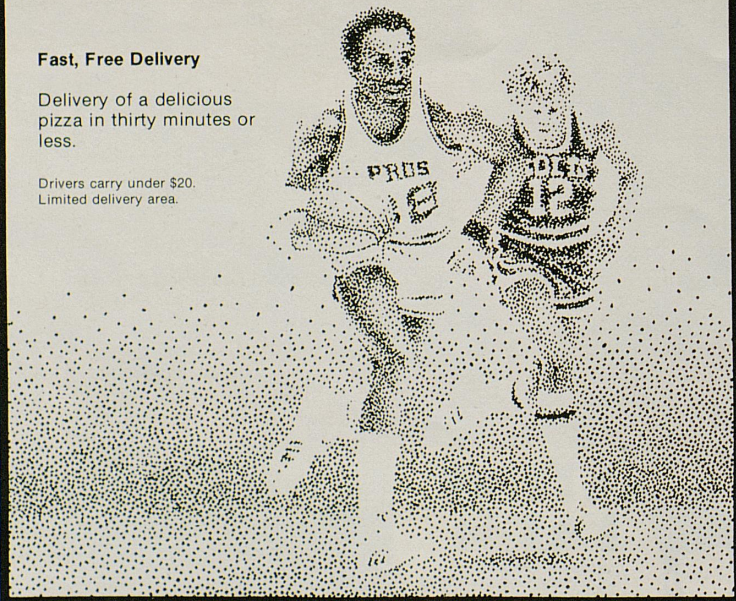


**Domino's  
Pizza  
Delivers...**

### Fast, Free Delivery

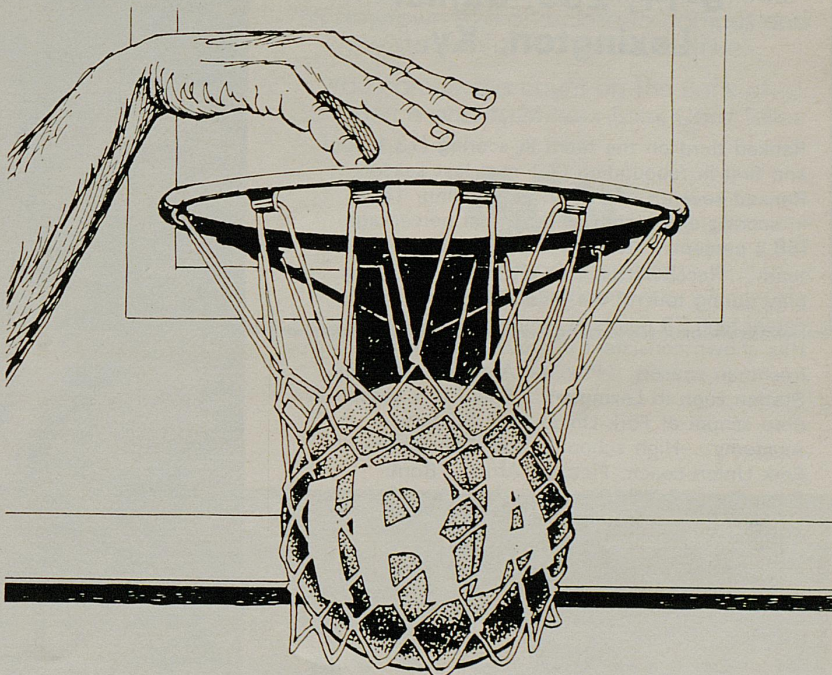
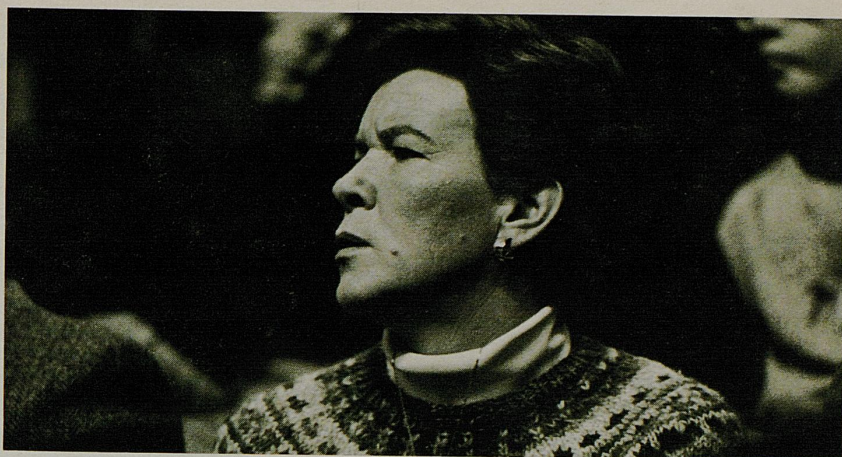
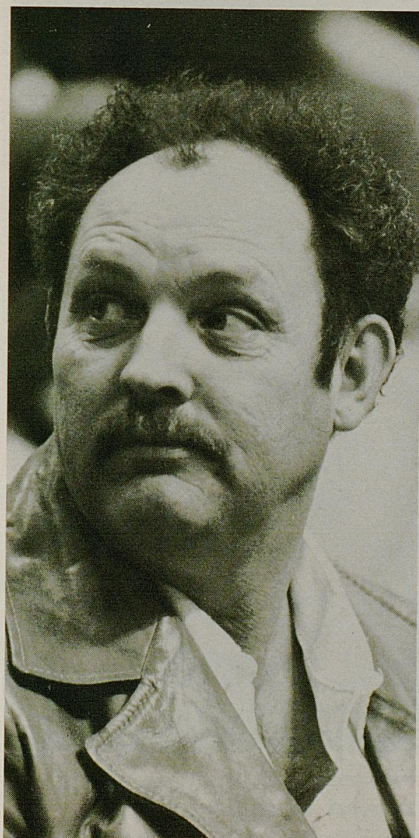
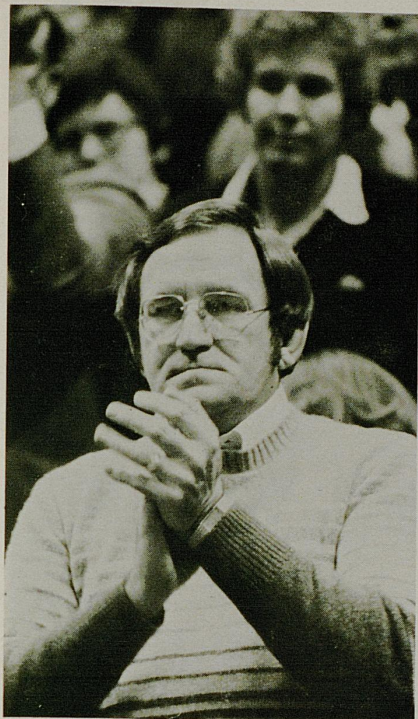
Delivery of a delicious pizza in thirty minutes or less.

Drivers carry under \$20.  
Limited delivery area.





# The Crowd



## Take a Tax Break.

You can score big tax savings with an Individual Retirement Account from Central Bank & Trust Co. And enjoy a comfortable financial lead when your game plan calls for retirement. Central Bank can set up an IRA that's tailored to boost the economic strengths of you and your family. So you can keep on going strong while you're saving money . . . and taxes!

Get the facts on the tax breaks you get with an IRA. Talk to the folks who are number one in serving your financial needs . . . Central Bank & Trust Co.



**Central Bank**

Central Bank & Trust Co.  
Member FDIC

Substantial interest penalty for early withdrawal.



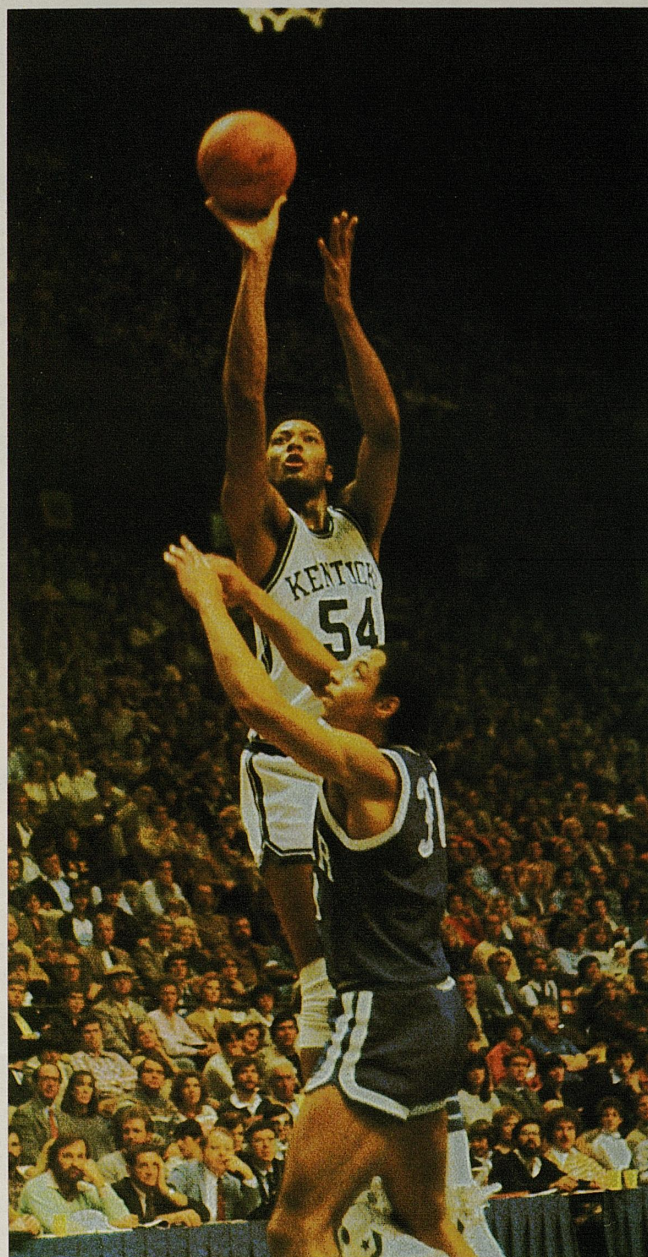




## Melvin Turpin - Center

**6-11, 235, Junior  
Lexington, Ky.**

Ranked third on the team in scoring (13.1 ppg) and first in rebounding (7.1 rpg) last season... Ranked seventh in SEC in rebounding, 15th in scoring and eighth in field goal percentage (58.2 percent)... Named to players' all-conference team... Received team award for outstanding play during tour of the Orient... Scored career high 28 points at Tennessee last season... Has shown consistent improvement since freshman season... Prep All-America at Bryan Station High in Lexington... Spent one season in prep school at Fork Union (Va.) Military Academy... High school coach: Bob Barlow... Fork Union coach: Fletcher Arritt... Born: December 28, 1960... Major: Arts and Sciences.



Yr.	G-GS	Minutes	Field Goals	Free Throws	Rebounds	A	PF-D	Points	High
Fr. (80-81)	28- 0	380-13.6	50- 95-52.6	31- 44-70.5	106-3.8	1	62-2	131- 4.7	17
So. (81-82)	30-30	912-30.4	160-275-58.2	72-106-67.9	212-7.1	22	90-3	392-13.1	28
Career	58-30	1292-22.3	210-380-55.3	103-150-68.7	318-5.5	23	152-5	523- 9.0	28





Member FDIC  
Member Federal Reserve System  
Equal Opportunity Lender

## the bank for all the right reasons

The Bank Card Teller...always available when you need quick cash to celebrate a "Big Blue Victory." Your nearest Bank Card Teller can be found at 2500 Nicholasville Road, 755 Newtown Pike and close to campus and the stadium at 720 Euclid Avenue.

You can always count on The Bank of Commerce and its 24-hour Bank Card Teller.



**BANK OF COMMERCE  
AND TRUST COMPANY**

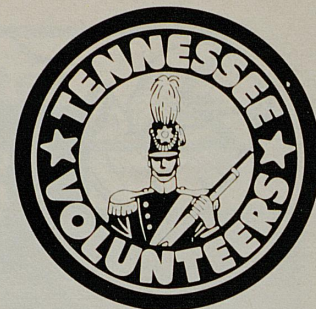


**The Joe B. Hall Show**  
**with WKYT Sports Director Rob Bromley**  
**Sundays on WKYT-TV, Channel 27, Lexington, KY.**





## Tennessee Volunteers



Soft-spoken **Dale Ellis** brings his All-America actions to Rupp Arena for the last time this afternoon.

The 6-7, 205-pound from Marietta, Ga., is bringing a superlative college career to a close after being one of the dominant forwards in the game the last two years.

Despite being the object of intense defensive pressure, Ellis still averages around 22 points a game and hits nearly 60 percent of his field goal attempts. Ellis has been to the free throw line more than 165 times this season. He visited the charity stripe 152 times last year.

Although he wasn't considered in the class of a **Dominique Wilkins** as a high schooler, Ellis did win Atlanta area player of the year honors and was a prep All-America. After a tough adjustment year as a freshman at UT, Ellis took to Don DeVoe's inside-oriented attack like butter to hot bread. He could finish out just behind **Ernie Grunfeld** and **Reggie Johnson** on UT's all-time scoring list.

Tennessee's only other double figures man is 6-2 junior **Michael Brooks**, an excellent offensive player who's hitting around 50 percent from the field. Brooks is one of a very few Vols permitted to launch long outside shots.

Brooks' running mate in the backcourt is point guard **Tyrone Beaman**. Averaging six assists per game, the 5-11 junior has the ability to inject vigor into the Vol offense. Beaman is definitely a key today.

One of DeVoe's most improved players is 6-10 junior **Dan Federmann** from Cincinnati Elder High. Though he lacks quickness and has trouble on defense, Federmann possesses a good shooting touch and he now plays with more aggressiveness.

Another improved player is 6-7 Willie Burton, also a junior. The Millen, Ga., product is second on the team in assists and is one of the leading rebounders in the league.

First off the bench is 6-5 sophomore **Kevin Woods**, a forward. Freshman **Rob Jones** helps out inside and 6-8 soph **Kirk Naler** fills in at guard.

### UNIVERSITY OF TENNESSEE ROSTER

No. Name	Pos.	Class	Ht.	Wt.	Hometown
10 Tyrone Beaman	G	Jr.	5-11	155	Niagara Falls, N.Y.
12 Ed Littleton	G	Sr.	6-2	160	Paris, Tenn.
14 Dale Ellis	F	Sr.	6-7	205	Marietta, Ga.
21 Michael Brooks	G	Jr.	6-2	160	Memphis, Tenn.
23 Myron Carter	G	So.	6-2	170	Madison, Tenn.
24 Walter Evans	C	So.	6-5	250	Morristown, Tenn.
25 Seth McDonald	F	Jr.	6-9	205	Tullahoma, Tenn.
30 Tyrone Harper	F	Fr.	6-7	210	Nashville, Tenn.
31 Kevin Woods	F	So.	6-5	185	Baltimore, Md.
32 Kirk Naler	F	So.	6-8	195	Gadsden, Ala.
33 Dan Federmann	C	Jr.	6-10	235	Cincinnati, Ohio
34 Rob Jones	F	Fr.	6-7	195	Knoxville, Tenn.
40 Willie Burton	F	Jr.	6-7	210	Millen, Ga.
43 Mike Johanson	C	Fr.	6-9	205	Alliance, Ohio

Head Coach: Don DeVoe

Assistants: Bob Burton, Jack Fertig,  
John Byers, Duke Thorpe

Transamerica is actually much more than a word. We're thousands of people, situated strategically throughout our country, who want to play a major role in your insurance needs and goals.

Call our agency to learn more

about one of America's most creative and valued insurance companies. Specializing in fair prices, fast claims, innovative programs and professional, personalized assistance.

Please take our word for it.

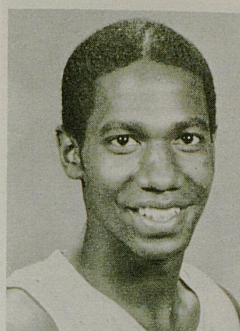


### THE FINAL WORD IN SECURITY AND PROTECTION: TRANSAMERICA.

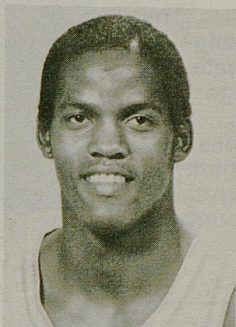
Consult your Yellow Pages  
for a local agent.

**Transamerica**  
Insurance Services

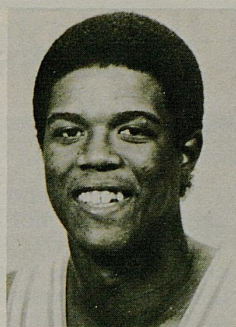




TYRONE BEAMAN



DALE ELLIS



MICHAEL BROOKS



Don DeVoe  
Head Coach

In the four previous years Don DeVoe has been at Tennessee, he's surprised the experts by taking the Volunteers to the NCAA Tournament each time.

DeVoe was an overwhelming choice as regional and SEC coach of the year in 1982, after directing his Vols to a 13-5 league record and a share of the conference crown.

#### DeVOE'S UT RECORD

	W	L	PCT.
1978-79	21	12	.636
1979-80	18	11	.621
1980-81	21	8	.724
1981-82	20	10	.667
Total	80	41	.661

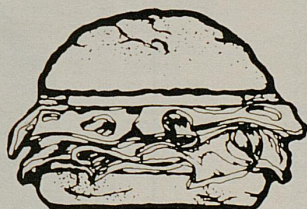
DeVoe became the twelfth head basketball coach in the history of UT when he was selected for the post in March, 1978.

His first coaching assignment was at Virginia Tech where he put together an 88-45 record in five seasons and won the NIT Championship in 1973.

The Sabina, Ohio product spent two seasons as head mentor at the University of Wyoming before coming on board at Tennessee.

He played on the Ohio State glory teams of the early 1960s under head coach Fred Taylor. After graduation in 1964, he joined another Ohio State grad, Bobby Knight, on Knight's staff at Army.

DeVoe is known in the coaching profession for his devotion to a sticky man-to-man defense. His training under Taylor and Knight prepared him well to adopt that type defense when he moved into a head coaching job.



Thank You For Making Our Sandwiches

**\*No. 1**

**Homemade Does Make a Difference**

- Tuna Fish
- Chicken Salad
- Egg Salad
- Pimento Cheese
- Potato Salad
- Macaroni Salad
- Cole Slaw
- Cheesecake
- Soups & Salads

We at the Upper Krust are glad you appreciate our homemade foods. This, along with using choice Kosher style meats from Chicago, help create the sandwich you voted the best.

\*Lexington Leader Restaurant survey September 1, 1982

# UPPER KRUST

393 Waller Avenue-Imperial Plaza  
Carry out-Phone 233-1717

**Cocktail Lounge Now Open**





# University of Tennessee

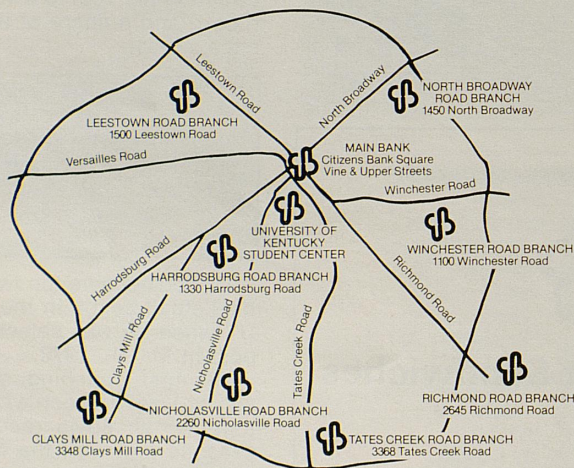
Continuing a tradition of service begun in 1794, the University of Tennessee's Knoxville campus carries out a unique mission in higher education in the Volunteer State.

UTK Chancellor Jack Reese heads the campus, which offers a full range of academic programs to approximately 28,000 students.

Professional and graduate education in 300 fields of study is available at UT Knoxville. The campus offers a wide range of undergraduate and graduate degree programs in 19 colleges and schools.

The student body includes men and women from every county in Tennessee, each of the fifty states and more than 70 other countries.

## 10 Convenient Locations



**CITIZENS UNION**  
NATIONAL BANK AND TRUST CO.

Lexington, Ky. 40507, 254-1112

Member Federal Reserve / Equal Opportunity Employer  
Equal Credit Opportunity Lender



**Dr. Edward J. Boling**  
University President

Dr. Edward J. Boling, seventh president of the University of Tennessee, was appointed in 1970 after a career in teaching, industry, state government and university administration.

He is the chief administrative officer of a statewide system of higher education which includes four primary campuses, several special units and statewide programs of research and public service.



**Bob Woodruff**  
Athletic Director

Success by Vol teams in head-to-head combat has characterized the UT sports program since Bob Woodruff took command as director of athletics in 1983.

The Vols have captured eight Southeastern Conference all-sports championships since 1969.

A native of Athens, Georgia, Woodruff was a standout tackle at Tennessee in 1936-38 on teams that won 23 games and lost only five.



# 1982-83 SEC Basketball Schedules

## ALABAMA

Date	Opponent	Score
Nov. 29	Middle Tenn. St.	103-58
Dec. 4	Texas Tech (B'ham)	74-53
Dec. 6	SMU	74-56
Dec. 11	at Penn State	75-67
Dec. 18	La. Tech	88-73
Dec. 20	Texas Southern	88-58
Dec. 28	Winston Tire Classic	
-29	at Los Angeles	
	Georgetown	74-61
Jan. 3	at FLORIDA	85-89
Jan. 5	at AUBURN	80-91
Jan. 8	KENTUCKY	74-67
Jan. 11	VANDERBILT	79-81
Jan. 15	at GEORGIA	64-67
Jan. 18	at TENNESSEE	64-73
Jan. 22	LSU	75-70
Jan. 24	OLE MISS	63-64
Jan. 28	at UCLA	70-67
Jan. 31	at MISS STATE	69-78
Feb. 5	at KENTUCKY	70-76
Feb. 7	at VANDERBILT	60-61
Feb. 12	GEORGIA	73-71
Feb. 14	TENNESSEE	90-78
Feb. 19	at LSU	71-67
Feb. 21	at OLE MISS	52-56
Feb. 26	MISS. STATE	
Mar. 3	FLORIDA	
Mar. 6	AUBURN	

## AUBURN

Date	Opponent	Score
Nov. 26	at Ala-Birmingham	63-61
Nov. 29	Mercer	85-76
Dec. 1	Florida St.	78-68
Dec. 4	Tennessee Tech.	74-65
Dec. 6	at Stetson	58-59
Dec. 8	at Houston	65-77
Dec. 20	Florida International	115-77
Dec. 28	Utah-Hilton Classic	
-29	at Salt Lake City	
	Cal-State Fullerton	69-60
Jan. 3	MISS. STATE	77-66
Jan. 5	ALABAMA	91-80
Jan. 8	at FLORIDA	75-92
Jan. 15	at KENTUCKY	75-67
Jan. 17	at VANDERBILT	62-64
Jan. 22	GEORGIA	66-64
Jan. 24	TENNESSEE	77-80
Jan. 29	at LSU	64-62
Jan. 31	at OLE MISS	48-61
Feb. 5	FLORIDA	62-54
Feb. 12	KENTUCKY	69-71
Feb. 14	VANDERBILT	72-71
Feb. 19	at GEORGIA	60-67
Feb. 22	at TENNESSEE	74-82
Feb. 26	LSU	
Mar. 1	OLE MISS	
Mar. 3	at MISS. STATE	
Mar. 6	at ALABAMA	

## FLORIDA

Date	Opponent	Score
Nov. 26	Alaska Shootout	63-80
-28	Louisville	72-52
	Alaska-Anchorage	55-68
Dec. 3	Illinois	74-80
Dec. 10	Ohio State	
-11	Florida Four Tourney	
	Jacksonville	104-78
	South Florida	73-77
Dec. 19	at Florida State	84-63
Dec. 21	Biscayne	92-72

Dec. 28 Gator Bowl Tourney  
-29 at Jacksonville

Date	Opponent	Score
Jan. 3	Penn State	82-60
Jan. 5	Jacksonville	56-47
Jan. 8	ALABAMA	89-85
Jan. 11	MISS. STATE	60-62
Jan. 15	AUBURN	92-75
Jan. 18	at South Florida	92-79
Jan. 21	at VANDERBILT	58-69
Jan. 24	at KENTUCKY	63-70
Jan. 27	TENNESSEE	78-74
Jan. 30	GEORGIA	79-83
Jan. 33	at OLE MISS	61-67
Feb. 1	at LSU	69-78
Feb. 4	at AUBURN	54-62
Feb. 7	St. Leo	85-49
Feb. 10	VANDERBILT	61-54
Feb. 13	KENTUCKY	61-73
Feb. 16	TENNESSEE	53-78
Feb. 19	at GEORGIA	65-80
Feb. 22	OLE MISS	
Feb. 25	LSU	
Mar. 1	at ALABAMA	
Mar. 4	at MISS. STATE	

## GEORGIA

Date	Opponent	Score
Nov. 26	Georgia State	99-62
Nov. 30	Randolph-Macon	81-53
Dec. 4	at Georgia Tech	82-67
Dec. 11	at Central Wesleyan	93-55
Dec. 15	at Texas	75-54
Dec. 18	at Augusta College	104-60
Dec. 22	at Georgia Southern	57-55
Dec. 29	Cotton States Classic	
-30	at Atlanta	
	Columbia	86-53
	Western Kentucky	90-69
Jan. 3	at TENNESSEE	76-87
Jan. 8	at LSU	56-60
Jan. 10	at OLE MISS	68-53
Jan. 15	ALABAMA	67-64
Jan. 17	MISS. STATE	75-59
Jan. 22	at AUBURN	64-66
Jan. 25	at FLORIDA	83-79
Jan. 29	KENTUCKY	70-63
Jan. 31	VANDERBILT	86-61
Feb. 5	LSU	59-70
Feb. 12	at ALABAMA	71-73
Feb. 15	at MISS. STATE	64-73
Feb. 19	AUBURN	67-60
Feb. 21	FLORIDA	80-65
Feb. 26	at KENTUCKY	
Feb. 28	at VANDERBILT	
Mar. 5	TENNESSEE	

## LOUISIANA STATE

Date	Opponent	Score
Nov. 26	Hawaiian Tip-Off	
	Chaminade	75-62
Nov. 27	at Hawaii-Pacific	98-76
Nov. 28	Hawaiian Tip-Off	
	Hawaii	66-68
Nov. 30	Pan American	76-67
Dec. 4	North Carolina at E. Rutherford, N. J.	43-47
Dec. 6	Loyola	97-80
Dec. 8	Texas A&M at New Orleans	88-70
Dec. 18	Cleveland St.	115-77
Dec. 20	at UCLA	68-82
Dec. 22	at Texas-El Paso	51-49
Dec. 30	St. Francis	67-66
Jan. 3	at VANDERBILT	65-67
Jan. 5	at KENTUCKY	50-52
Jan. 8	GEORGIA	60-56
Jan. 10	TENNESSEE	58-59

Date	Opponent	Score
Jan. 15	at OLE MISS	71-68
Jan. 17	N.C.-Wilmington	70-55
Jan. 22	at ALABAMA	70-75
Jan. 24	at MISS STATE	65-80
Jan. 29	AUBURN	62-64
Feb. 1	FLORIDA	78-69
Feb. 5	at GEORGIA	70-59
Feb. 7	at TENNESSEE	63-66
Feb. 12	OLE MISS	72-63
Feb. 19	ALABAMA	67-71
Feb. 21	MISS STATE	86-73
Feb. 26	at AUBURN	
Feb. 28	at FLORIDA	
Mar. 3	VANDERBILT	
Mar. 5	KENTUCKY	

## MISSISSIPPI

Date	Opponent	Score
Dec. 1	Carson-Newman	91-70
Dec. 4	at East Tennessee	63-69
Dec. 7	Ala.-Birmingham	66-54
Dec. 10	Cougar Classic	
-11	at Provo	
	Fordham	57-47
Dec. 15	Long Beach St.	54-53
Dec. 18	at Mercer	48-40
Dec. 21	Central Arkansas	67-60
Dec. 29	Illinois Wesleyan	77-65
Dec. 29	Memphis State	58-63
Jan. 3	at KENTUCKY	60-72
Jan. 5	at VANDERBILT	77-62
Jan. 8	TENNESSEE	56-55
Jan. 10	GEORGIA	53-68
Jan. 15	LSU	68-71
Jan. 22	at MISS. STATE	67-61
Jan. 24	at ALABAMA	64-63
Jan. 29	FLORIDA	67-61
Jan. 31	AUBURN	61-48
Feb. 5	at TENNESSEE	53-65
Feb. 7	at GEORGIA	76-59
Feb. 12	at LSU	63-72
Feb. 19	MISS. STATE	65-63
Feb. 21	ALABAMA	56-52
Feb. 26	at FLORIDA	
Mar. 1	at AUBURN	
Mar. 3	KENTUCKY	
Mar. 5	VANDERBILT	

## MISSISSIPPI STATE

Date	Opponent	Score
Nov. 29	Southern Miss	81-58
Dec. 1	at Houston	65-74
Dec. 4	Northwestern St.	97-59
Dec. 6	Florida International	102-66
Dec. 11	North Alabama	80-49
Dec. 17	Krystal Classic	
-18	at Chattanooga	
	Ala.-Birmingham	67-47
Dec. 28	UT-Chattanooga	56-62
-29	Sugar Bowl Classic	
	at New Orleans	
	Tulane	51-47
Jan. 3	SW Louisiana	65-56
Jan. 5	at AUBURN	66-77
Jan. 8	at FLORIDA	62-60
Jan. 10	VANDERBILT	64-48
Jan. 15	KENTUCKY	53-59
Jan. 17	at TENNESSEE	75-74
Jan. 22	at GEORGIA	59-75
Jan. 24	OLE MISS	61-67
Jan. 29	LSU	80-65
Jan. 31	ALABAMA	78-69
Feb. 5	at VANDERBILT	60-63
Feb. 8	at KENTUCKY	67-83
Feb. 12	TENNESSEE	75-66
Feb. 15	GEORGIA	73-64
Feb. 19	at OLE MISS	63-65

## TENNESSEE

Date	Opponent	Score
Nov. 27	Biscayne	84-59
Dec. 1	at UT-Chattanooga	55-49
Dec. 8	Arizona	92-73
Dec. 11	New Orleans	76-74
Dec. 17	Volunteer Classic	
-18	St. Francis (NY)	70-51
	Miami of Ohio	69-62
Dec. 22	Oklahoma City	99-56
Dec. 28	Las Vegas Classic	
-29	San Jose State	50-42
	Nevada-Las Vegas	54-70
Jan. 3	GEORGIA	87-76
Jan. 8	at OLE MISS	55-56
Jan. 10	at LSU	59-58
Jan. 15	MISS. STATE	74-75
Jan. 18	ALABAMA	73-64
Jan. 22	at FLORIDA	74-78
Jan. 24	at AUBURN	80-77
Jan. 29	VANDERBILT	60-61
Jan. 31	KENTUCKY	65-63
Feb. 5	OLE MISS	65-53
Feb. 7	LSU	66-63
Feb. 12	at MISS. STATE	66-75
Feb. 14	at ALABAMA	78-90
Feb. 19	FLORIDA	78-53
Feb. 22	AUBURN	82-74
Feb. 24	at VANDERBILT	
Feb. 27	at KENTUCKY	
Mar. 5	at GEORGIA	

## VANDERBILT

Date	Opponent	Score
Nov. 26	Alaska Shootout	
-28	Illinois	58-47
	Clemson	72-63
	Louisville	70-80
Dec. 4	Western Carolina	81-66
Dec. 7	St. Louis	88-67
Dec. 11	Duke	74-65
Dec. 13	at Illinois	77-79
Dec. 18	at Clemson	75-72
Dec. 22	Middle Tennessee	64-53
Dec. 27	Music City Invitational	
-28	Eastern Ky.	82-71
	Manhattan	85-71
Jan. 3	LSU	67-65
Jan. 5	OLE MISS	62-77
Jan. 8	at MISS. STATE	48-64
Jan. 11	at ALABAMA	81-79
Jan. 15	FLORIDA	69-58
Jan. 17	AUBURN	64-62
Jan. 22	KENTUCKY	77-82
Jan. 24	at South Carolina	71-85
Jan. 29	at TENNESSEE	61-60
Jan. 31	at GEORGIA	61-86
Feb. 5	MISS. STATE	63-60
Feb. 7	ALABAMA	61-60
Feb. 12	at FLORIDA	54-61
Feb. 14	at AUBURN	71-72
Feb. 19	at KENTUCKY	63-82
Feb. 24	TENNESSEE	
Feb. 28	GEORGIA	
Mar. 3	at LSU	
Mar. 5	at OLE MISS	

March 10-13 SEC Tournament  
at Birmingham



### Growth in a challenging environment.

In the increasingly complex and challenging world of business, employers realize that people are their most important resource. In the development of that resource Meidinger can provide essential services that will generate company growth far into the future.

Meidinger is a national company that helps employers deal with the full range of employee benefit, compensation and communication issues.

Meidinger can provide practical, workable programs that will successfully meet the challenges of the business environment.

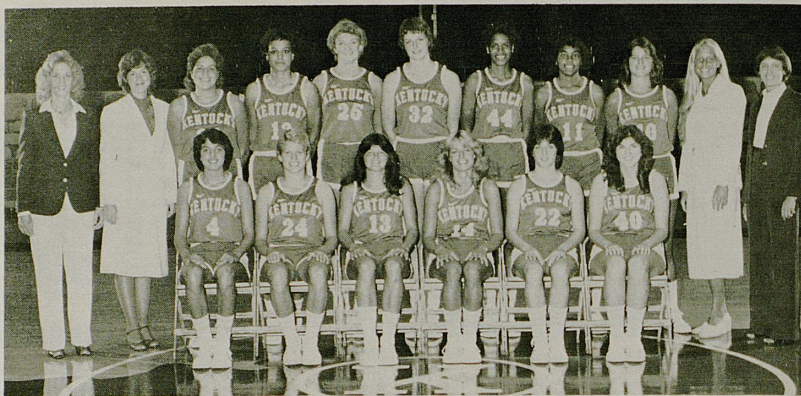
Remember our name. We're developers of your company's most important resource.

## Meidinger

Meidinger, Inc.  
Compensation and  
Benefit Services  
2600 Meidinger Tower  
Louisville Galleria  
Louisville, KY 40202  
502/561-4500



## 1982-83 KENTUCKY LADY KATS



Front row, left to right: Diane Stephens, Donna Martin, Patty Jo Hedges, Lea Wise, Audre Andrew and Lynnette Lewis. Back row, left to right: Assistant Coach Dottie Berry, Trainer Sue Stanley, Terri Naiser, Valerie Still, Jody Runge, Sally Loughton, Karen Mosley, Leslie Nichols, Lisa Collins, Graduate Assistant Lynn Norenberg and Head Coach Terry Hall.

No.	NAME	POS.	CLASS	HEIGHT	WEIGHT	HOMETOWN
4	Diane Stephens	G	SO.	5-9	138	Louisville
10	Lisa Collins	F	JR.	5-10	142	Corbin
11	Leslie Nichols	F	FR.	6-0	159	Lexington
12	Valerie Still	C/F	SR.	6-1	170	Kansas City, Mo.
13	Patty Jo Hedges	G	SR.	5-7	130	Louisville
14	Lea Wise	G	SR.	5-7	127	Lexington
22	Audre Andrew	G	FR.	5-6	133	Bedford
24	Donna Martin	G	JR.	5-7	143	Lexington
25	Jody Runge	C	JR.	6-2	176	Waukon, Iowa
32	Sally Loughton	C	FR.	6-4	171	Stafford, England
33	Terri Naiser	F	SR.	5-9	171	Louisville
40	Lynnette Lewis	F	JR.	5-9	149	Loyall
44	Karen Mosley	C	FR.	6-3	152	Toledo, Ohio

Head Coach: Terry Hall  
Assistant Coach: Dottie Berry  
Graduate Assistant: Lynn Norenberg

Trainer: Sue Stanley  
Managers: Michele Oberst, Heather Longton,  
Mie Nishigori

DATE	OPPONENT	SITE
Nov. 27	CINCINNATI	84-76
Dec. 2	OHIO STATE	73-60
Dec. 5	MIAMI UNIVERSITY	90-61
Dec. 8	Indiana	85-72
Dec. 21	EAST TENN. STATE	97-52
Dec. 19	CHARLESTON	106-81
Dec. 21	FLORIDA	71-66
Jan. 3	Memphis State	71-75
Jan. 6	MIDDLE TENN. ST.	73-68
Jan. 10	TENNESSEE TECH	102-67
Jan. 14	SOUTH FLORIDA	93-65
Jan. 15	ARKANSAS	77-43
Jan. 18	Alabama	104-77
Jan. 20	Louisville	79-66
Jan. 23	Vanderbilt	106-85
Jan. 26	DePaul	72-48
Jan. 30	GEORGIA	66-59
Feb. 2	SOUTH CAROLINA	89-77
Feb. 5	OLD DOMINION	80-66
Feb. 9	TENNESSEE	85-95
Feb. 12	VANDERBILT	80-71
Feb. 16	Rutgers	89-80
Feb. 18	AUBURN	77-55
Feb. 20	Georgia	81-99
Feb. 22	Florida	73-63
Feb. 27	Tennessee	Away
Mar. 3-6	SEC Championships at Tennessee	

All Home Games at Memorial Coliseum.  
\*7:30 p.m.



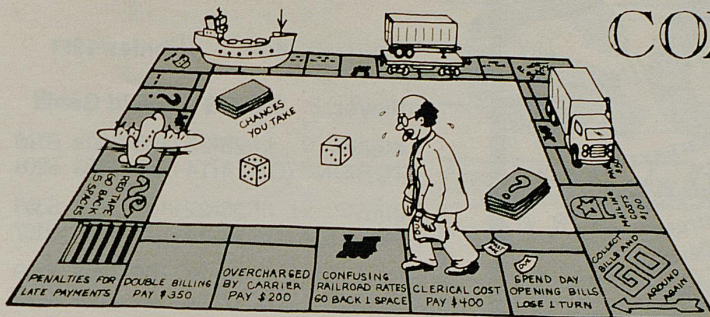
Terry Hall is in her third season at the helm of the nationally ranked Lady Kats.

She was head coach at the University of Louisville for five years, building an impressive 79-53 record and winning a Metro Conference championship. At U of L she gained substantial experience in various levels of womens' sports.

Her 13-year coaching career began at Butler High School in Louisville. Her first college coaching assignment was at Eastern Kentucky University. The Indiana State graduate earned a Master's degree in P.E. from Eastern.



# The Freight Game: Play to WIN with COMPUTREX, INC.



Pre-Audit & Complete Freight  
Payment Services

Data-Base Management  
Studies

Prominent National Clientele —  
both large & small

Charles E. Buxton, President

P. O. BOX 13020 • LEXINGTON, KY 40582 • (606) 252-5624

Ralph Lauren

# Polo®



men's  
women's  
and  
children's

## dawahares

GARDENSIDE \* FAYETTE MALL \* LEXINGTON MALL



## JOE BOLOGNA'S



103 W. Maxwell  
252-4933

Richmond Road  
at Lakeview Plaza  
269-6332

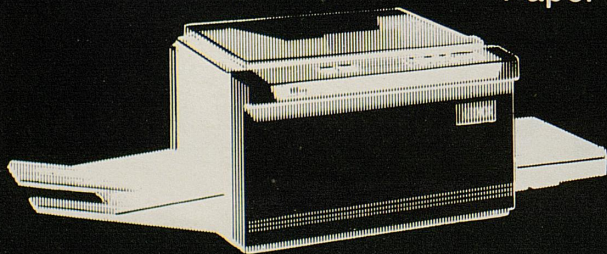
365 Southland  
277-6155





# ABDICK®

Copiers  
 Duplicators  
 Electronic  
 Typewriters  
 Word/Info  
 Processors  
 Supplies  
 Paper



**A.B. Dick Products of Lexington**

## 1982-83 UNIVERSITY OF KENTUCKY BASKETBALL STATISTICS

Overall: 18-5 Home: 12-1 Away: 5-4

Player	G-GS	Field Goals	Free Th	Points
Melvin TURPIN (C)	23-23 14-14	136-221- 61.5 91-145- 62.8	67- 98- 51- 72-	68.4 70.8
Jim MASTER (C)	23-22 14-14	122-229- 53.3 77-149- 51.7	38- 46- 29- 34-	82.6 85.3
Derrick HORD (C)	23-23 14-14	97-187- 51.9 51-108- 47.2	62- 75- 24- 29-	82.7 82.8
Dirk M'FIELD (C)	23-23 14-14	78-148- 52.7 44- 85- 51.8	38- 49- 25- 31-	77.6 80.6
Charles HURT (C)	23-21 14-14	79-126- 62.7 42- 73- 57.5	35- 51- 20- 31-	68.6 64.5
Kenny WALKER (C)	23- 0 14- 0	56- 88- 63.6 42- 65- 64.6	39- 59- 36- 47-	66.1 76.6
Dicky BEAL (C)	17- 1 8- 0	27- 47- 57.4 8- 17- 47.1	34- 46- 9- 13-	73.9 69.2
Bret BEARUP (C)	23- 2 14- 0	33- 70- 47.1 16- 29- 55.2	14- 22- 8- 15-	63.6 53.3
Troy McKIN'Y (C)	18- 0 11- 0	17- 33- 51.5 11- 22- 50.0	3- 4- 3- 4-	75.0 75.0
Tom HEITZ (C)	15- 0 8- 0	4- 8- 50.0 2- 4- 50.0	9- 12- 4- 4-	75.0 100.0
Roger HARDEN (C)	19- 0 12- 0	4- 19- 21.1 3- 16- 18.8	3- 4- 2- 2-	75.0 100.0

Other TEAM 5- 11 4- 6

KENTUCKY (C)	23 14	658- 387-	1187- 713-	55.4 54.3	346-472-7 211-282-7	3.3 4.8	745- 438-
OPPONENTS (C)	23 14	583- 375-	1381- 839-	42.2 44.7	258-389-6 167-250-6	6.3 6.8	727- 437-

Deadball Rebounds: UK-64, O

MINUTES PLAYED: Minniefield 709-30.8, Master 699-27.6, Hord 628-27.3, Walker 391-17.0, Beal 256-17.3, McKinley 103-5.7, Heitz 76-5.1, Oth 33

BLOCKED SHOTS: Turpin 70, Walker 13, Bearup 6, Beal 1, Hord 1, UK-98, Opp.-45

HIGH SCORING GAMES: Turpin 42 (Tennessee-A); Walker 23 (Mississippi State-A); Hurt 15 (Villanova and Indiana); Heitz 4 (Butler), McKinley 4 (Kentucky)



# SI TY OF KENTUCKY T ISTICS (23 Games)

wa ay: 5-4 Neutral: 1-0 SEC: 10-4

Th rows	Reb.	PF-D	A TO S	Points
88- 68.4	143- 6.2	60-1	14 45 9	339-14.7
72- 70.8	92- 6.6	43-1	11 30 6	235-16.8
16- 82.6	45- 2.0	26-0	46 38 12	282-12.3
34- 85.3	30- 2.1	16-0	29 25 8	183-13.1
75- 82.7	89- 3.9	35-1	40 50 18	256-11.1
29- 82.8	47- 3.4	23-0	21 36 12	126- 9.0
19- 77.6	74- 3.2	67-1	150 79 33	194- 8.4
31- 80.6	44- 3.1	48-1	76 47 20	115- 8.2
51- 68.6	113- 4.9	54-1	30 26 23	193- 8.4
31- 64.5	60- 4.3	33-0	23 19 13	104- 7.4
59- 66.1	108- 4.7	43-0	13 19 10	151- 6.6
47- 76.6	79- 5.6	32-0	12 17 6	120- 8.6
16- 73.9	25- 1.5	30-0	45 28 11	88- 5.2
13- 69.2	11- 1.4	9-0	18 10 2	25- 3.1
22- 63.6	48- 2.1	38-1	21 8 3	80- 3.5
15- 53.3	22- 1.6	20-1	11 3 2	40- 2.9
4- 75.0	14- 0.8	2-0	3 3 0	37- 2.1
4- 75.0	5- 0.5	1-0	0 2 0	25- 2.2
12- 75.0	8- 0.5	17-0	3 9 2	17- 1.1
4- 100.0	4- 0.5	9-0	1 7 0	8- 1.0
4- 75.0	14- 0.7	18-0	20 21 2	11- 0.6
2- 100.0	9- 0.8	15-0	17 15 2	8- 0.7

6 10 0-0 1 4 1 14  
54 1

-7 3.3 745- 32.4 390- 5 386 331 124 1662-72.3  
-7 4.8 438- 31.3 249- 3 219 214 72 985-70.4

-6 6.3 727- 31.6 462-22 306 291 165 1424-61.9  
-6 6.8 437- 31.2 273-12 195 172 104 917-65.5

ds: UK-64, Opp.-48

M aster 699-30.4, Turpin 695-30.2, Hurt 635-  
B eal 256-15.1, Bearup 286-12.4, Harden 139-  
oth er 33

B earup 6, Hurt 4, Minniefield 2, Master 1,

nn essee-A); Hord 26 (Villanova); Master 26  
e-H), Minniefield 17 (Tulane and Ala-  
tand iana), Beal 14 (Illinois), Bearup 10 (Butler  
Mc Kinley 4 (Six Times), Harden 2 (Five Times)



FOODTOWN introduces "G.O.Q."—supermarket specials that are **so** super special, you've got to "Grab One Quick" before they disappear! Each week, Foodtown makes some extra special deals with manufacturers and suppliers and speeds the savings down the line to you—so grab one quick.

Look for the specially marked "Grab One Quick" displays in your neighborhood Foodtown (expiration dates will be indicated for each item). Grab one quick, because at prices like these, they'll be gone before you can say "G.O.Q."



## for Wildcat Action

Depend on  
**WHAS**  
Radio **84**

Depend on  
**WHAS**  
Radio **84**



# Campbell Home Furnishings

where bargains and beauty  
go hand in hand

"Featuring Names You Know  
& Trust"

Pennsylvania House •  
Thomasville • Davis Cabinet Co.  
Serta • Stiffel • Council  
Craftsman

Decorator  
Service  
Available

TOLL FREE

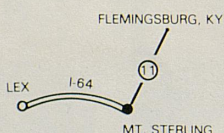
**255-7511**

MT. STERLING RD.  
FLEMINGSBURG, KY

FLEMINGSBURG

**845-5231**

OPEN DAILY 8 AM - 8 PM  
SUNDAYS 1 PM - 6 PM



Visit Our New  
Catalog Showroom  
490 New Circle Rd.  
**233-2242**

HOURS: 10 - 8 Mon.-Fri.  
10 - 6 Daily  
1 - 6 Sunday

"Eastern Kentucky's Largest Selection  
of Home Furnishings and Biggest Savings  
are only 58 minutes from Lexington"

Free Delivery within 50 miles



**TURF TOWN**  
properties, inc.

274 Southland Dr., Suite 204

Lexington, Kentucky 40503

(606) 278-9315

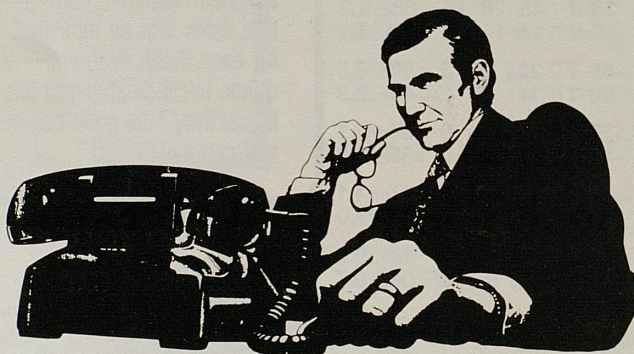
Offering choice Bluegrass residential & farm  
properties

**MLS**

Edith Dillon, GRI, CRS  
Broker



## When Your Business Depends On A Phone System...



## Depend On General Telephone.

We are the phone company.  
We know PABXs, Key Systems, and  
any other type of telephone your  
business needs.

Now, we are offering you an option of  
lease-purchase or direct ownership.

If you need a few phones or several  
hundred phones, call...

General Telephone— **THE** phone company.

**General  
Telephone**





**Guests from all over the world  
continue to rave about our  
resort hotel.**

**NOW, IT'S YOUR TURN!**

**SPECIAL ROOM RATE FOR  
CENTRAL KENTUCKIANS ONLY**

**\$39**

We've set aside a limited number of luxurious rooms for folks living within 150 miles of us; call and make your reservation—NOW—and present this coupon when you check in.

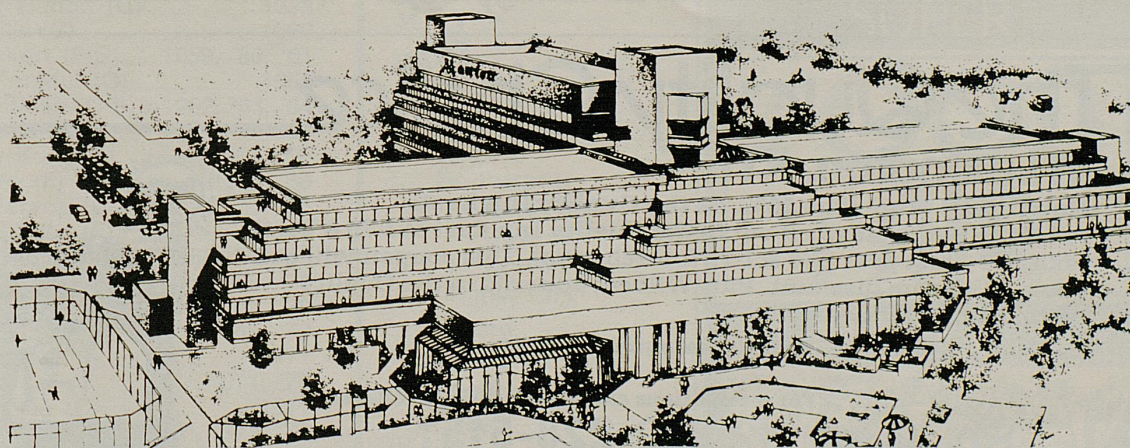
thru March 31, 1983  
plus applicable taxes

*Lexington Marriott Resort Griffin Gate*

For reservations and information call 606/231-5100

- Deluxe accommodations
- Indoor pool, saunas, health club and whirlpool
- Excellent restaurants and lounges
- Other packages available—many inclusive of meals, gratuity and taxes
- Subject to availability

This rate does not apply to groups and is not commissionable. Limited number of rooms available.



*Lexington Marriott Resort Griffin Gate*

1800 Newtown Pike, Lexington, Kentucky 40511



## INDEX OF ADVERTISERS

A		G		P	
A. B. Dick	64	Godfather's Pizza	77	Pappagallo	10
A. C. Brake	74	Griffin Gate Realty	45	Provident Mutual	23
Airdrie Farm	37	GTE	66		
Air Systems, Inc.	KU-3				
Alchemy Farm	47				
Ale 8	72				
American Bank	74				
American Dairy Association	24-25				
Arby's	6				
Ashland Oil	20				
B		H		Q	
Bank of Commerce	57	Harbor Freight Salvage	15	Quality Inn	68
Begley Drug	26	Harris & Co.	79		
Bluegrass Bottling Co.	40	Heinsmith	16		
Brown & Williamson	Inside Front Cover	Host Communications, Inc.	78		
		Hubbuck in Kentucky	30		
C		J		R	
Campbell Home Furnishings	66	Joe Bologna's Pizza	63	Radisson Hotel	13
Campbell House Inn	30	Jonabell Farm	43	Richmond Place	22
Casa Executiva	80			Rolling Ridge Apartments	19
Central Bank	55			Rosenberg Jewelers	3
Citizens Fidelity Bank	2			Ryder Trucks	80
Clay Ward Agency	33				
Cliff Hagan's Ribeye	3				
Coca-Cola	40-41				
Computrex	63				
Comtel	39				
Conrad Chevrolet	30				
Cracker Barrel	72				
D		K		S	
Dairy Farm Families of Ky.	24-25	Kentucky Air National Guard	17	Second National Bank	26
Dairy Farm Families of Ky.	KU-4-25			Sleepy Head House	75
Dawahare's	63			Spendthrift Farm	5
Dixie Beer	69			Stone Farm	53
Domino's Pizza	54			Swiss Colony	51
Duff's Smorgasbord	75				
F		L		T	
Fayette Mall	11	La Quinta Motor Inn	71	Tom Gentry Farm	Back Cover
Food Fair-Somerset	69	LeRoy's Jewelers	8	Toyota of Lexington	13
Foodtown	65	Lexington Clinic	73	Transamerica	58
4th Street Implement	33	Lexington Herald-Leader	Inside Back Cover	Turfland Mall	21
Freedom Dodge	75	Library Lounge	64	Turftown Properties	66
		Long John Silver's	Color Insert	T. W. Lee's	23
		Lexington Crown	70		
		Lundy's Catering	73		
		M		U	
		Marathon Oil	79	UK Summer Camps	78
		Marriott Hotel	67	United American Bank	60
		McDonald's	31	Upper Krust	59
		Meidinger	62		
		Mid-State Distributing	1		
		N		V	
		National Tire Wholesale	49	Valvoline	20
		New Balance Shoe	27		
		New York Life	7		
				W	
				Walmac-Warnerton Farm	39
				Wal-Mart	76
				Wendy's	35
				Wenneker's	51
				WHAS Radio	65
				WKYT-TV	57
				WLAP Radio	51

## The Quality Choice in Lexington, KY!

**Have a ball. And save 10%. At the Quality Inn East.**

After the game, head on out to the Quality Inn East at I-75 & US 60 (exit 110—just past I-64 & I-75 interchange). This coupon will get you a 10% room discount. Plus Wildcat specials in the Quality restaurant and tavern.

**Quality Inn East I-75 & US 60, Lexington, KY 40511**

For reservations call 606-293-1431 or toll-free:

**800-228-5151**

*The Quality Choice.*





## UK Players Selected To ALL-SEC

(59) Players Chosen 106 Times)

Ellis Johnson (G)	1933
Forest Sale (C)	1933
John DeMoisey (F)	1933, '34
Bill Davis (G)	1934
Leroy Edwards (C)	1935
Dave Lawrence (F)	1935
Ralph Carlisle (F)	1936, '37
Warfield Donohue (G)	1937
Bernie Oppen (G)	1938, '39
Layton Rouse (G)	1940
Lee Huber (G)	1941
James King (C)	1941
Marvin Akers (F)	1941, '43
Ermal Allen (F)	1942
Melvin Brewer (C)	1943
Bob Brannum (C)	1944
Jack Parkinson (G)	1944, '45, '46
Jack Tingle (F)	1944, '45, '46, '47
Kenton Campbell (C)	1945
Ralph Beard (G)	1946, '47, '48, '49
Wallace	
Jones (F)	1946, '47, '48, '49
Joe Holland (F)	1947
Alex Groza (C)	1948, '49
Kenny Rollins (G)	1947, '48
Jim Line (F)	1950
Bill Spivey (C)	1950, '51
Walt Hirsch (F)	1951
Shelby Linville (F)	1951
Bobby Watson (G)	1951, '52
Frank Ramsey (G)	1951, '52, '54
Cliff Hagan (C)	1952, '54
Bill Evans (G-F)	1955
Bob Burrow (C)	1955, '56
Johnny Cox (F)	1957, '58, '59
Vernon Hatton (G)	1958
Don Mills (C)	1960
Bill Lickert (F-G)	1959, '60, '61
Larry Pursiful (G)	1962
Cotton Nash (C-F)	1962, '63, '64
Ted Deeken (F)	1964
Tommy Kron (G)	1965, '66
Pat Riley (F)	1965, '66
Thad Jaracz (C-F)	1966
Larry Conley (F)	1966
Louie Dampier (G)	1965, '66, '67
Mike Casey (G)	1968, '69, '71
Dan Issel (C)	1968, '69, '70
Mike Pratt (F)	1969, '70
Larry Steele (F)	1971
Tom Parker (F)	1971, '72
Tom Payne (C)	1971
Jim Andrews (C)	1972, '73
Kevin Grevey (F)	1973, '74, '75
Jack Givens (F)	1976, '77, '78
Rick Robey (F)	1977, '78
Kyle Macy (G)	1978, '79, '80
Sam Bowie (C)	1980, '81
Derrick Hord (F)	1982



# FIGHTING WILDCATS BEER

**THERE'S NOTHING MORE  
KENTUCKY THAN WILDCAT!**

Not associated with the University of Kentucky  
Distributed by Forum Distributors, Lexington, KY

*"Friendly  
Service All the  
Way to Your Car."*

### Serving

#### Somerset:

North 27  
Downtown  
Greenhill

Whitley City  
Hazard  
Jackson  
Stanford  
Hyden  
Corbin  
Mt. Vernon  
Pineville  
London



## SUPER FOOD FAIR MARKETS



*Good luck  
to the  
Wildcats  
from*

**HEAVEN  
HILL  
DISTILLERS**

The BEST  
of the Great  
KENTUCKY  
BOURBONS

Distributed by  
**LEXINGTON  
CROWN, INC.**  
2497 Palumbo Drive  
Lexington, KY 40509

*The Value of  
Tradition*

# High Tech Enhances WKYT

By DAN METZGER

The recent acquisition of a Chyron 4 graphics generator and an Ampex Digital Optics package has made WKYT's coverage of Kentucky basketball unrivaled in the country.

The two, according to Mike Kanarek, director of operations at WKYT, has allowed the station's mobile unit to develop into perhaps the finest equipped in the world.

"The Chyron 4 graphics generator shows a player's name, when for example, he's shooting a free throw, and also his statistics on the screen," Kanarek said. "It's the state of the art—it's the best."

The Ampex Digital Optics (ADO) is a completely stand alone effects processor. It is a special effects device. Though there are approximately 20 others in the nation, WKYT is the only station with an ADO in a mobile unit, Kanarek said.

When Kentucky is playing at home, the station sends its engineering crew to Rupp Arena six hours before the telecast. In this time, the crew of 12 sets up four cameras, as many as 12 microphones, three intercom circuits and an Interrupt Foldback (IFB) circuit.

The IFB allows the producer in the truck to talk to the three talent, or broadcasters. The producer, in WKYT's case, Roger Roebuck, can talk to the talent in an all-call, or to only one. The IFB allows the producer to talk to the talent, but not the talent to the producer. The IFB is an earpiece, and if the talent wishes to talk to the producer, they must wait until a commercial, or station break.

Roebuck will cue Rob Bromley, Jack Givens, or Bob Domine of upcoming replays during the game, or during a commercial they may refine a play on video tape.

A transmitter on the top of Rupp Arena microwaves the game

back to the station, where five engineers oversee the transmission. AT&T feeds the game to the other six stations carrying the game through the telephone company.

Two of the cameras are mounted on platforms extending out from the upper deck of the arena. These are large, full-sized cameras with longer lenses, ranging from 450 millimeters to 650 millimeters. "These allow a tight shot up high," Kanarek said, "we need a longer lense to zoom right in."

---

**"The Chyron 4 graphics generator shows a player's name, when for example, he's shooting a free throw, and also his statistics on the screen," Kanarek said. "It's the state of the art—it's the best."**

---

The other two cameras are at courtside held on the shoulders of cameramen. They are approximately 120 to 140 millimeters and are usually situated at the ends of the court.

"The microphones are placed in different areas, and on each backboard there is a microphone to pick up the grunts and groans of the players, Kanarek said.

One video tape machine (VPR) is used for the game, and the producer directs the cameramen to which camera will be fed into the VPR for a slow-motion replay.

The cameras must be assembled before each game, but due to WKYT's experienced technicians, Kanarek said they are able to disassemble in nearly an hour.

Bromley, Givens, and Domine may share the spotlight, but it is Roebuck who controls the show. "The director decides what goes on," Kanarek said. "He chooses the cameras and what camera gives the best action."

Kanarek, who is the technical director of the UK games, fills the



# WKYT's Coverage



The on-air team: from left, Bob Domine, Rob Bromley and Jack Givens.

role of carrying out the director's such as wiring, lights and the sound system. He is basically, the director's right hand man.

The game is recorded in two 90-minute reels of two-inch quad tape. The station also uses as a backup three hours of three-quarter inch tape, plus a recording of three hours of three-quarter inch tape in the truck in the event the microwave fails. An hour of one-inch tape for slow-motion is also in the mobile unit.

When the game is played back at 11:30, the quad tape and the three-quarter inch tape is played simultaneously. If the quad tape breaks down during the course of the telecast, the back-up tape will continue running, without the television audience aware of a

malfunction.

Kanarek admits the station would not have been able to afford the mobile unit without renting it to other stations throughout the country.

"The truck has been used by ABC, NBC, CBS, ESPN and USA-cable. We've produced all types of sporting events, rock concerts, beauty pageants and game shows," Kanarek said.

Due to an SEC rule which prohibits live telecasts of conference games unless it is carried by the SEC network (TVS), WKYT is unable to carry the games live. Non-conference games may be televised live, and the station negotiates with the university for the telecasts.



WKYT's mobile unit is one of the finest in the country.

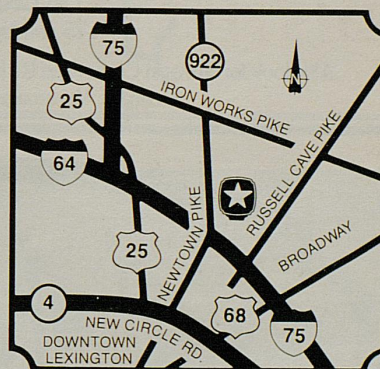
## Wake up to La Quinta Sports Fans!

People who travel a lot are waking up to La Quinta (La KEEN ta) Motor Inns for quality, comfort and value across the United States.

### La Quinta Motor Inn Lexington

1919 Stanton Way  
I-64/75 Newtown Pike Exit.  
606-231-7551

Only 3 miles from Rupp Arena  
6 miles from the University of Kentucky



- 130 rooms with color TV, AM/FM radio, extra long beds, direct dial phones
- All major credit cards accepted

Nationwide  
Toll Free  
Reservations  
800-531-5900



Over 100 locations and growing.  
From Florida to California, in the Midwest  
and Rocky Mountain areas.

© 1982, La Quinta Motor Inns, Inc. 8/82.  
Traded on the New York Stock Exchange.



## The Cracker Barrel Old Country Store. Country cookin' the way it was.

Before or after the game, when it's down-home Southern cookin' you're looking for, we hope you'll look no further than the Cracker Barrel Old Country Store. Big country breakfasts and Country Dinner Plates with home-style meats and a garden of country vegetables are our specialties.

Open Sunday through Thursday from 6 a.m. til 10 p.m.  
Friday and Saturday from 6 till 11.



Old Country Store  
I-75 and Newtown Road

Also look for stores in Corbin and Richmond. Plus, we're all through Tennessee, Georgia, Alabama and South Carolina, too.



KENTUCKY'S UNIQUE SOFT DRINK  
SALUTES AMERICA'S NUMBER ONE TEAM

## Rupp Arena Records

(Collegiate-Varsity)

Team—Single Game

**Consecutive Wins**—30 by Kentucky (Nov. 29, 1980 to Mar. 6, 1982).

**Most Points**—126 by Kentucky vs. South Carolina, 81 (Dec. 10, 1979).

**Most Points by Kentucky Opponent**—91 by Jacksonville, Dec. 18, 1981.

**Biggest Margin of Victory for Kentucky**—50 (Kentucky 103, TCU 53, Dec. 2, 1976).

**Biggest Margin of Defeat for Kentucky**—14 (Alabama 78, Kentucky 64, Jan. 12, 1980).

**Smallest Margin of Victory for Others**—2 (Utah 70, Kentucky 68, Dec. 18, 1977).

**Smallest Margin of Defeat for Others**—1 (Kentucky 61, Purdue 60—UKIT—Dec. 22, 1979).

**Most Points, Both Teams**—202 (Kentucky 114, Portland State 88—UKIT—Dec. 16, 1977).

**Most Points in One Half**—66 by Kentucky in second half vs. West Texas State, Dec. 4, 1978.

**Fewest Points**—47 by Tennessee vs. Kentucky 48, Jan. 10, 1981.

**Most FGA's, Both Teams**—163 (Kentucky 82 vs. Vanderbilt 81, Feb. 5, 1977).

**Most Field Goals Made**—46 by Kentucky vs. Portland State, Dec. 16, 1977.

**Best FG Pct. (Game)**—68.0 (34 of 50) by West Virginia vs. Bowling Green, Dec. 18, 1977 (UKIT).

**Best FG Pct. (First Half)**—78.6 (11-14) by Kentucky vs. Mississippi, Jan. 14, 1981.

**Best FG Pct. (Second Half)**—83.3 (15 of 18) by Kentucky vs. Mississippi State, Feb. 28, 1977.

**Most Free Throws Attempted**—56 by Kentucky vs. Miss State, Feb. 12, 1979.

**Most FTA's, Both Teams**—97 (Kentucky 48, Vanderbilt 49, Jan. 19, 1980).

**Most Free Throws Made**—44 by Kentucky vs. Vanderbilt, Jan. 19, 1980.

**Most Free Throws Missed**—19 by Kentucky vs. Wisconsin, Nov. 27, 1976 and vs. Portland State, Dec. 16, 1977.

**Most Rebounds**—62 by Kentucky vs. Bowling Green, Dec. 17, 1976.

**Fewest Points, Both Teams**—94 (Alabama 48, Kentucky 46, Mar. 6, 1982).

**Most Personal Fouls**—41 by La Salle vs. Kentucky, Dec. 2, 1978.

**Most Personal Fouls, Both Teams**—75 (UK 32, La Salle 43, Dec. 2, 1978).

**Largest Crowd**—24,165\* (Kentucky vs. Indiana, Dec. 8, 1981).

Individual—Single Game

**Most Points**—39, Freeman Williams, Portland State vs. Kentucky (UKIT), Dec. 16, 1977.

**Most Field Goal Attempts**—40 by Freeman Williams, Portland State vs. Kentucky, (UKIT) Dec. 16, 1977.

**Most Field Goals Made**—17 by Freeman Williams, Portland State vs. Kentucky, (UKIT) Dec. 16, 1977.

**Most Free Throws Attempted**—23 by Dwight Anderson, Kentucky vs. Miss. State, Feb. 12, 1979. Made 18.

**Most Free Throws Made**—18 by Dwight Anderson, Kentucky vs. Miss. State, Feb. 12, 1979.

(CONSECUTIVE)—12 by Kyle Macy vs. Vanderbilt and Mike Rhodes of Vanderbilt vs. Kentucky, Jan. 19, 1980).

**Most Rebounds**—19 by Mike Phillips, Kentucky vs. LSU, Jan. 22, 1977; and Bernard King, Tennessee vs. Kentucky, Jan. 12, 1977.



## Fitness & Sports Medicine Center

*Fitness Programs      Sports Medicine*  
*Cardiac Rehabilitation*

Established to provide comprehensive fitness evaluations, fitness programs and rehabilitation for both individuals and teams.

Complete range of evaluation and improvement programs under **constant medical supervision** utilizing cybex equipment, exercise treadmills and the physical therapy department.

Lexington Clinic, P.S.C.

1221 South Broadway/Lexington, Kentucky 40504/606/255-6841

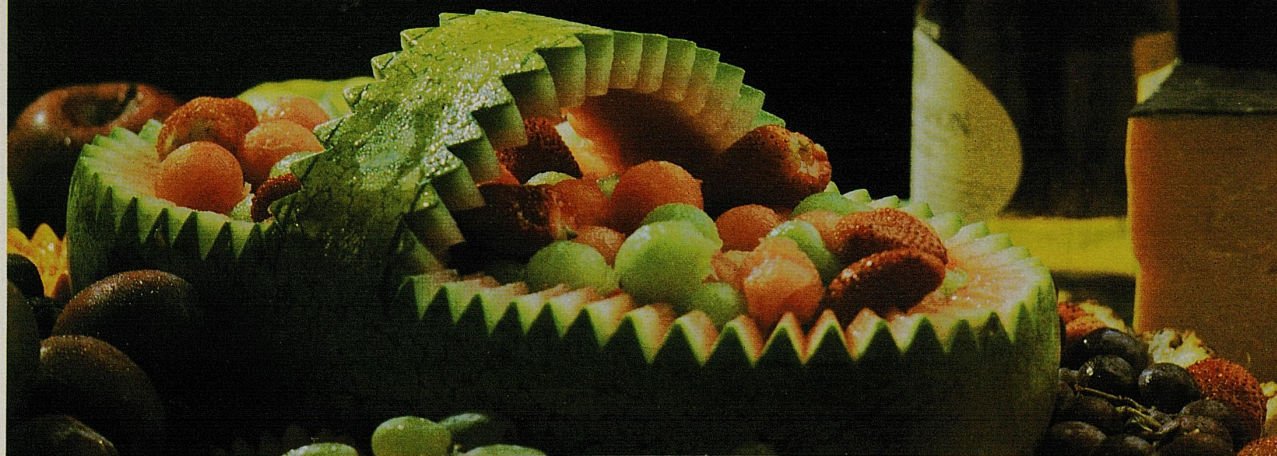


**LUNDY'S**

**CATERING—**

Lexington, Kentucky (606) 255-0717

*Not The Oldest But The Best*





A Leader  
in a Changing Time.  
Discover the American Difference



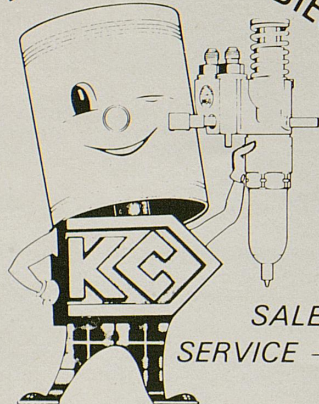
Corporate Center, Short & Upper, Codell & Woodhill


**JIM'S**  
SEAFOOD RESTAURANT  
LOCK 4 — KENTUCKY RIVER

THE  
FINEST SEAFOOD  
AVAILABLE IS A  
SHORT DRIVE AWAY  
★ COCKTAILS ★

950 WILKINSON BLVD.  
FRANKFORT

REPLACEMENT PARTS FOR GM DIESEL ENGINES



INSIST  
ON  
GENUINE  
  
QUALITY

SALES —  
SERVICE — RENTAL

KORODY COLYER



A-C BRAKE CO., INC.

308 E. College St. Louisville, Kentucky 502/584-5226



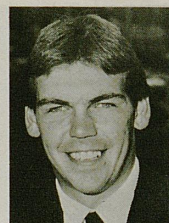
**WALT McCOMBS**  
Assoc. Trainer

Assigned to basketball, McCombs joined the UK staff in 1972 and returned in 1977 after a three-year stint at Clemson. A native of Belton, S. C., he is a 1971 graduate of The Citadel.



**BILL KEIGHTLEY**  
UK Basketball  
Equipment Mgr.

An eight-year staff member, Bill was graduated from Kavanaugh High School in Lawrenceburg, Ky. A mail-carrier for the U. S. Postal Service, he is married to the former Hazel Robinson of Lawrenceburg.



**JEFF RILEY**  
Volunteer Coach

Jeff Riley, a native of Wheelwright, Ky., is in his first season with the Wildcat basketball program. An All-State selection at Wheelwright High, Riley initially signed with Georgia Tech and transferred to Morehead State.



**ROGER THOMAS**  
Head  
Student Mgr.

After serving two years as an assistant manager, Roger Thomas is in his second season as head student manager. He is a native of Chattanooga, Tenn.



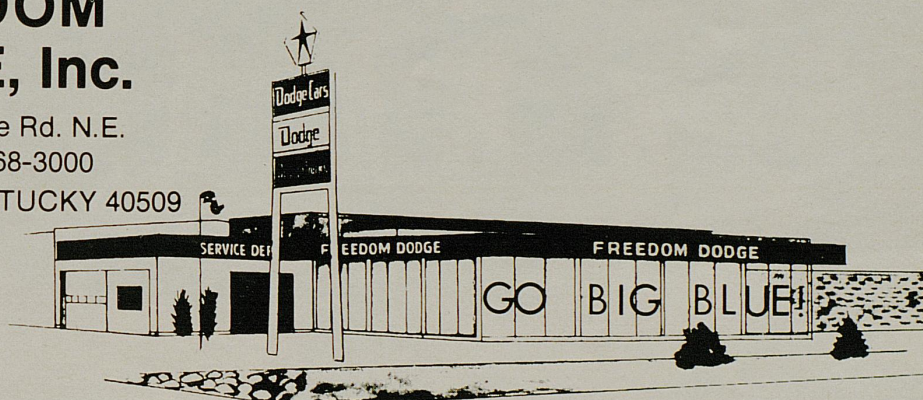
**We're proud to serve you  
all you care to eat for one  
low  
price!**



**321 Eastland Shopping Center • Lexington, Kentucky**

## **FREEDOM DODGE, Inc.**

1560 New Circle Rd. N.E.  
Telephone 268-3000  
LEXINGTON, KENTUCKY 40509



*YOU'LL LIKE THE WAY WE DO BUSINESS!*

## *Sleepy Head* **HOUSE**

418 West Short Street  
ACROSS FROM THE OPERA HOUSE  
(Side Entrance)

**Featuring  
FINE HOME FURNISHINGS  
SEALY AND SERTA BEDDING**



*"Where People Shop For Quality And Don't Mind Paying A Little Less®"*



# The 1982-83 UK Cheerleading Squad



The 1982-83 UK Cheerleaders: (on floor, from left) Julie Billington, Murray; Steve Gibson, Lexington; Tom Creasey, Paris; Lee Ackiss, Lexington; Don Ware, Louisville; Jimmy Mortimer, Glasgow; Jeff Gothard, Lexington; Lorea Towery, Lake Oswego, Ore. (forming pyramid, from left) Holly Bankemper, Ft. Thomas; Tomi Anne Blevins, Williamson, W. Va.; UK Mascot Dean Paris, Grand Rapids, Mich.; Lisa Perkins, Lexington; Kim Calvert, Lexington.

• Wal-Mart Sells for Less • Wal-Mart Sells for Less • Wal-Mart Sells for Less • Wal-Mart Sells for Less • Wal-Mart Sells for Less •

A great Wildcat basketball team includes dedication of both players and staff, and a game plan

## WAL-MART

*Wal-Mart's game plan includes careful handling, never dropping the ball, and prompt courteous service*

Among our many locations visit:

Winchester • Richmond • Danville • Frankfort • Somerset • Campbellsville • Bardstown • Elizabethtown

20 other locations in the state with more on the way

• Wal-Mart Sells for Less • Wal-Mart Sells for Less • Wal-Mart Sells for Less • Wal-Mart Sells for Less •



# there's nobody's pizza like **Godfather's Pizza**™



**1424 Alexandria Drive**  
231-0666

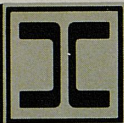
**2950 Richmond Road**  
269-9641

**348 Southland Drive**  
276-5384

*Home delivery from all locations*

UK Students call 231-0666





## HOST COMMUNICATIONS, INC.

**Marketing, Public Relations,  
Association & Meeting Management,  
Radio Sports Broadcasting:  
HOST COMMUNICATIONS, INC.**

**Typesetting, Design & Printing:  
ART CRAFT PRESS  
REES PRINTING**

**Meeting & Convention Service:  
THE LEXINGTON CONNECTION**

**Radio, T.V. Production & Broadcasting:  
COLONY COMMUNICATIONS  
CAWOOD LEDFORD PRODUCTIONS**

**120 Kentucky Avenue • Lexington, Kentucky 40502 • (606) 253-3230**

## Summer Camps At UK

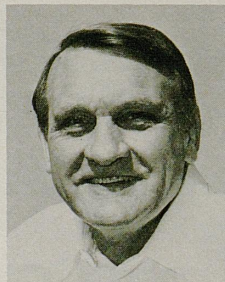
### **Ninth Annual Kentucky Wildcat Basketball Camp**



Coach Joe B. Hall

**1983 Summer Sessions  
June 12 - 17      June 19 - 24**

**For Free Brochure Write:  
Kentucky Wildcat Basketball Camp  
Memorial Coliseum  
University of Kentucky  
Lexington, KY 40506  
or phone: (606) 257-1916**



Coach Jerry Claiborne

### **Fourth Annual Kentucky Wildcat Football Camp**

**1983 Session:  
June 5 - 10      UK Campus  
(Age 11 Through High School Jr.)**

**FOR APPLICATION &  
INFORMATION WRITE:  
WILDCAT FOOTBALL CAMP  
COMMONWEALTH STADIUM  
UNIVERSITY OF KENTUCKY  
LEXINGTON, KY 40506-0222**





Best in the Long Run



## Your insurance needs are unique

*Putting a finger on the program that matches your needs is our principal concern*



*Call UK alumni  
James Harris and  
W. Grant Lewis*

No two insurance programs *should* be identical. If they are, they may be in the wrong hands. When a program is tailored to your operation, your risks, your goals, and your perception of value, it can't be exactly like anyone else's. So don't become a victim of mistaken identity. At Harris & Co. you deal with a principal of the firm who recognizes your individuality, and whose experience is best suited to your field. And you deal with a buyer, who knows where to go for the coverage you need.

If this system for identifying your insurance needs makes sense to you, we hope you'll call us.

## Harris & Co.

**Buyers of Insurance**

9th Floor  
Starks Building  
Louisville, Kentucky 40202  
502 584-2193



# RENT A RYDER TRUCK AND SAVE.

Save about 50% of the cost of a moving company by renting a Ryder truck and moving it yourself. Save still more in time, trouble and aggravation by renting a truck from the best-maintained, most dependable fleet in the world: Ryder's. Save in peace of mind by knowing your Ryder truck is sturdy, dependable and up to the job. Save time and effort with the built-in loading ramp that's part of each Ryder move-it-yourself truck. Isn't that enough savings for you?

**Branch Office**  
233-7836

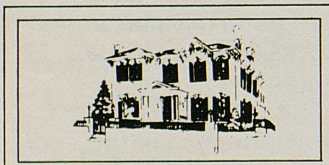
West 259-0784  
East 269-5376  
S. East 255-5109

RYDER. THE BEST TRUCK MONEY CAN RENT.



## "STATE OF THE ART" Dining

### *Casa Executiva* (EXECUTIVE HOUSE)



### *Relax and enjoy . . .*

Simply put, we offer the ultimate in elegant dining . . . from tantalizing appetizers to a provocative offering of unusual American, Continental or Italian dishes, complemented by an incomparable selection of choice vintage wines and cocktails.

At Casa Executiva, we invite you to savor selections from a menu which is a cut above the rest . . . including veal, lamb, quail, lobster, scampi, frog legs, steaks, beef Wellington, Dover sole and pasta (fettuccine Alfredo, tortellini, cavatelli, mannicotti, canelloni, etc.).

Then the finish . . . a delectable selection from our pastry cart or a flaming dessert (bananas Foster, cherries jubilee, baked Alaska, etc.). Experience all of this in the elegant atmosphere of a restored 18th century mansion.

We're the ONLY Lexington gourmet restaurant with full tableside service.

Casa Executiva. ASK ANYBODY!

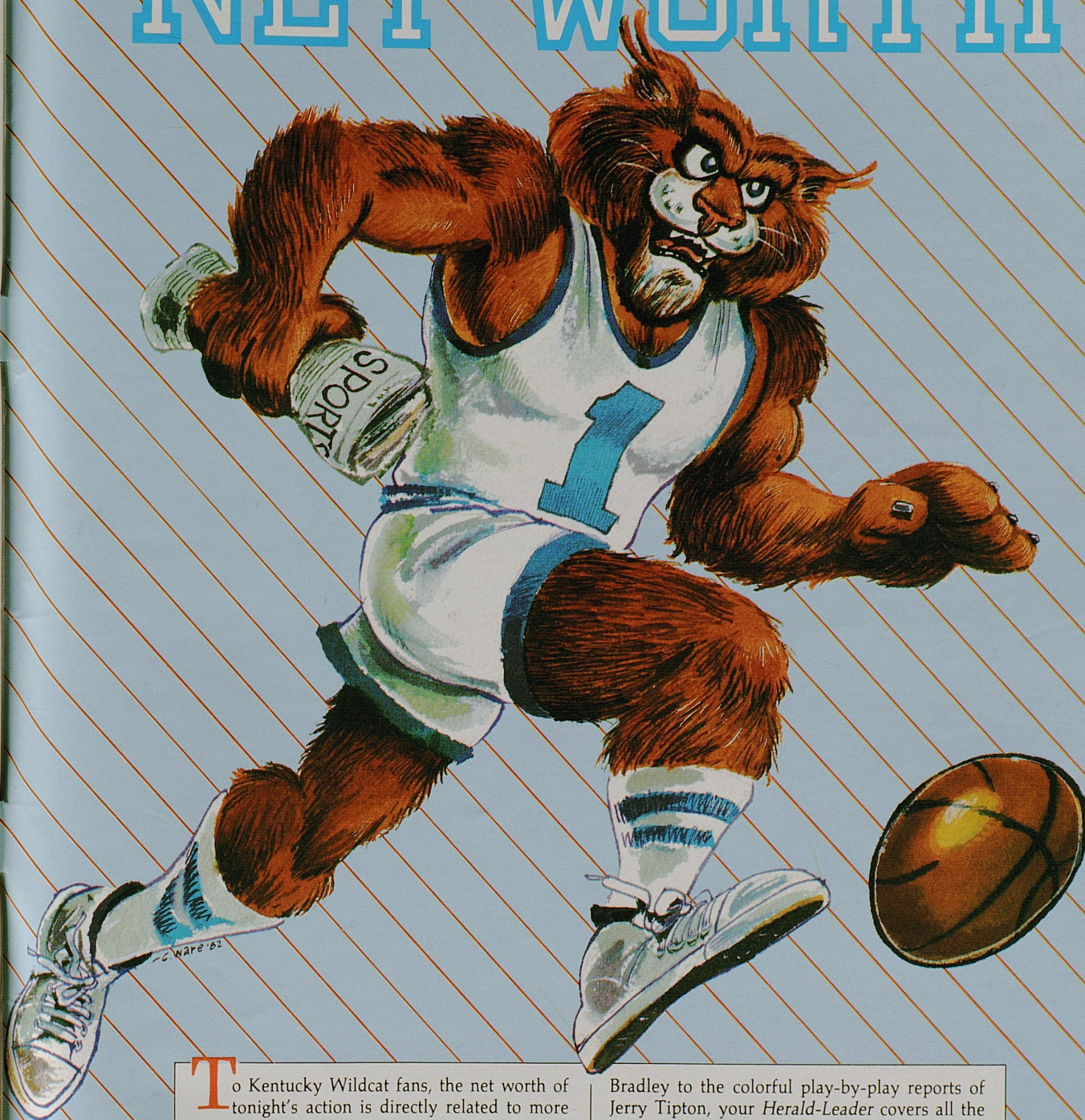
### *...the ultimate dining experience*

\*OPEN FOR DINNER ONLY    \*ALL MAJOR CREDIT CARDS HONORED  
\*FREE PARKING    \*RESERVATIONS-254-6263  
253-1174

"Casa Executiva" located at 270 South Limestone (Limestone at Maxwell)



# NET WORTH



**T**o Kentucky Wildcat fans, the net worth of tonight's action is directly related to more than just the bottom-line score. Kentucky basketball connoisseurs want to know the details behind the action . . . on the hardwood and in the locker room.

That's why more and more Kentuckians daily turn to the sports pages of the *Lexington Herald-Leader*. From the spicy commentary of D.G. FitzMaurice to the hardwood savvy of Mark

Bradley to the colorful play-by-play reports of Jerry Tipton, your *Herald-Leader* covers all the angles and delivers the action right to your front door.

When it comes to Kentucky basketball coverage, the net worth of your *Lexington Herald-Leader* is second to none.

For home delivery information, telephone 253-1314 or toll free 1-800-432-9548.

LEXINGTON HERALD-LEADER