

POINTS OF INTEREST
Chattooga River Information Site — An exhibit area with restrooms provides information on the nearby Chattooga Wild and Scenic River.
Wahalla National Fish Hatchery — This large trout hatchery is open to the public. A scenic Forest Service picnic area adjacent to the hatchery contains the largest white pine and hemlock trees in South Carolina.
King Creek Falls — This is an attractive 70-foot high waterfall at the end of a well-marked, 7-mile trail.

Welcome To The Francis Marion & Sumter National Forests

The Francis Marion and Sumter National Forests were established in 1936. Covering 609,000 acres, they are well distributed in the nearby level coastal plain, the rolling piedmont, and rugged mountains, and provide many goods, services and forms of recreation for the public. The Forest Service manages these resources — timber, water, wildlife, forage and recreation — for the continuing benefit of the American people both today and for the future.

MANY RECREATION OPPORTUNITIES
 Developed recreational facilities at more than 50 locations on the Francis Marion and Sumter National Forests provide activities ranging from rifle ranges and boat ramps to attractive swimming and picnic areas. Campgrounds are on a first-come, first-served basis, with visits limited to 14 consecutive days. While campers pay a fee at the more extensively developed areas, many of the smaller areas are free. Signs at the entrances of fee areas give information on the charge system.

Visitors can enjoy swimming, camping, picnicking, sightseeing, fishing and nature studies. The cooler months of spring and fall are not only the most colorful on the Forests, but are more comfortable for the visitor. Most wildflowers, shrubs and trees blossom in March and April. Visitors should be prepared for mosquitoes on the Francis Marion during the summer and fall.

TRAILS
 Trails offer one of the best opportunities to enjoy the large areas of back country on these Forests. There are over 370 miles of hiking, horseback, motorcycle and canoe trails. Contact the Supervisor's Office for information on these trails.

WILDLIFE, FISHING
 With its wide variety of habitats, the Forests provide many opportunities for hunting, bird watching, nature study, environmental education, photography and just plain enjoyment of the out-of-doors. Hunters seek game species such as deer, squirrel, rabbit, turkey, dove, quail and raccoon. Fox, opossum, bobcat and bear also live here, along with about 250 species of birds and many kinds of fish. The South Carolina Wildlife and Marine Resources Department and the U.S.D.A. Forest Service work together to provide the food, shelter and protection needed by wildlife.

All National Forest lands are open to hunting and fishing, except those posted because of recreation and administrative facilities. Persons over 14 years of age must have a current South Carolina license, and hunters must also have a game management area permit.

TIMBER
 You may see timber harvesting during your visit to the Forests. The Francis Marion and Sumter are two of the leading timber producing National Forests in the South. Timber is harvested using methods designed to protect and enhance other resources such as wildlife and recreation. Private contractors purchase trees and deliver them to sawmills and pulp mills for conversion into useful products. The Forests grow about two times as much wood as is being harvested. Vigorous stands of trees are left to serve as storehouses of high quality timber for future enjoyment and use. The Forest Service returns twenty-five percent of the income from timber and other uses to counties which contain National Forest land to use for schools and roads.

THE CHATTOOGA WILD AND SCENIC RIVER
 In 1974, Congress designated the Chattooga as the South's first Wild and Scenic River. In addition to offering the most challenging whitewater boating in the eastern United States, the Chattooga provides quality trout fishing.

Persons who do not have the skill or equipment to safely float the river, or who need instruction, can hire the services of competent outfitter guides operating under Forest Service permit. The Andrew Pickens District Office near Wahalla, S.C. has information on commercial trips and sells a detailed map of the Chattooga. Registration and life jackets are required for all boaters.

WILDERNESS
 The 1964 National Wilderness Preservation Act defines wilderness as "an area where the earth and its community of life are untrammeled by man... where man himself is a visitor and does not remain..."
 South Carolina's first designated wilderness was the attractive 3,300 acre Ellicott Rock area in mountainous western South Carolina, Georgia and North Carolina. Maps and information showing the hiking trails in this area are available from the Andrew Pickens Ranger District.
 A far different experience awaits visitors to the four new wilderness areas near the Atlantic coast on the Francis Marion. These areas, which have a total acreage of 13,750 acres, are: Wambaw Creek, Wambaw Swamp, Little Wambaw Swamp and Hell-hole Bay. All are normally wet, swampy areas, and therefore, are generally without trails. Visitors should use caution and carry a compass and map when entering.

- PLEASE HELP OUT**
1. Pack it in — Pack it out. Carry out your trash and someone else's to a refuse container.
 2. Realize that others have just as much right to the forest as you have.
 3. Park vehicles so that they won't block gates, roads, or parking spaces.
 4. There are numerous tracts of private land within the National Forests. Avoid traveling on these unless permission is obtained from owner.
 5. Hiking and horseback trails are closed to all off-road vehicles.
 6. Protect water supplies.
- SAFETY ITEMS**
1. WARNING: climbing waterfalls may result in serious injuries or death!
 2. Don't leave valuables in unattended cars.
 3. Water in recreation areas is tested regularly. While streams may look pure, drinking the water may cause sickness.
 4. Mosquitoes are numerous on the Francis Marion during the summer.

Stumphouse Tunnel Park — This area contains a never-completed railroad tunnel built in the 1850's in an attempt made to cross the mountains. To the east of the campground is Isaquena Falls, which drops to the rocks far below.

Rose Hill State Park — Visitors may tour the area and grounds of the old Gist Mansion Plantation.

Parson's Mountain Lookout Tower — Located high atop one of the taller hills in the Piedmont, is open to the public and provides a good vista of the surrounding area.

Hampton Plantation — An historic State Park which features a large mansion built in the 1750's where South Carolina's poet, Archibald Rutledge lived for many years.

St. James' Church — This Anglican church built in 1768, provides an excellent example of early church architecture in a scenic setting.

Guillard Lake Scenic Area — A 925-acre area along the Santee River established to protect very old cypress trees and unusual limestone outcropping.

McClellanville — A quaint fishing village with oak-chestnut forest and interesting old church.

FOR FURTHER INFORMATION
 Purchase of a "Forest visitor map" will provide additional detail for any of the four divisions shown on this map. Numerous free brochures describing individual trails are also available. For maps or information, contact:

Supervisor's Office, (803) 765-5222
 Strom Thurmond Federal Building
 1835 Assembly Street, P.O. Box 2222
 Columbia, S.C. 29202
 Weekdays 8:00 a.m.-4:30 p.m.

FRANCIS MARION NATIONAL FOREST

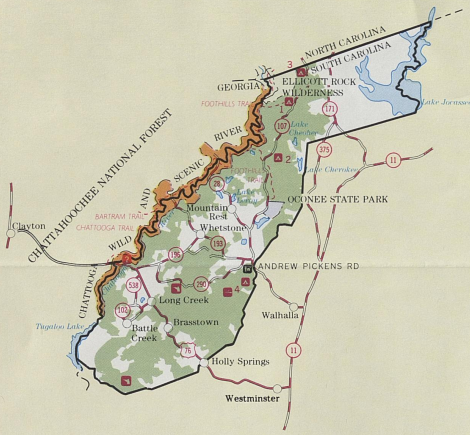
Wambaw District P.O. Box 106 McClellanville, S.C. 29458 (803) 887-3311	Wilderbee District Rt. 3, Box 630 Monks Corner, S.C. 29461 (803) 336-3248
--	---

SUMTER NATIONAL FOREST

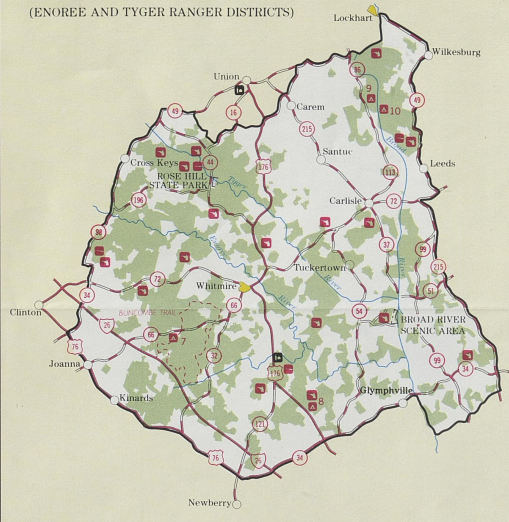
Andrew Pickens District Star Route Wahalla, S.C. 29691 (803) 838-8568	Long Cane District Rm. 201, Federal Bldg., Box 3188 Greenwood, S.C. 29646 (803) 229-2406
Edgefield District 321 Bacon Street, Box 30 Edgefield, S.C. 29824 (803) 637-5395	Tyger District Duncan By-Pass Highway 176, Drawer 10 Union, S.C. 29379 (803) 427-9698
Enoree District Rt. 1, Box 179 Whitmers, S.C. 29178 (803) 276-4810	

APR 1983
 University of Ky. Library

SUMTER NATIONAL FOREST
(ANDREW PICKENS RANGER DISTRICT)



SUMTER NATIONAL FOREST
(ENOREE AND TYGER RANGER DISTRICTS)



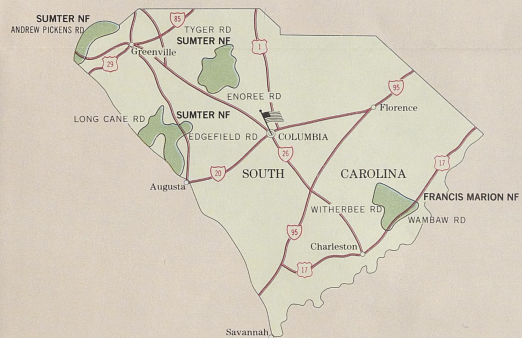
FOREST VISITOR GUIDE TO THE FRANCIS MARION AND SUMTER NATIONAL FORESTS
SOUTH CAROLINA

1982
1" = 8 miles

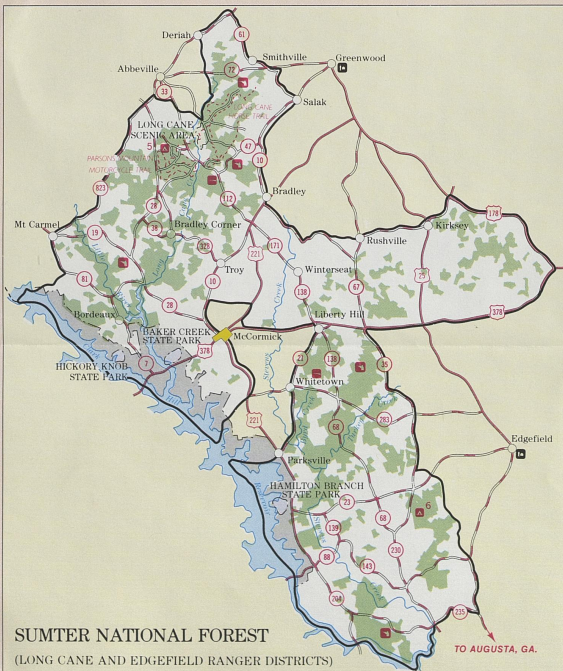
LEGEND

- National Forest Boundary
- Forest Supervisor's Office
- Ranger District Office
- Recreation Site, Forest Service
- Recreation Site, Non Forest Service
- Rifle Range
- Hunt Camp
- Information Site
- National Forest Land
- Chattooga Wild and Scenic River
- Wilderness Area
- State Park
- Corps of Engineers Land
- Urban Area
- Primary Route
- Secondary Route
- Other Route
- Trail
- Interstate Highway
- U.S. Highway
- State Highway
- Forest Road

KEY TO MAJOR RECREATION AREAS	Site Number	Fee Area	Camping	Swimming	Picnicking	Drinking Water	Hiking Trails	Boat Launch	Sanitary Facilities	Showers	Trailer Dump Sta.	
												1
ANDREW PICKENS RD												
CHATTOOGA	1		•	•	•	•	•	•	•	•	•	
CHERRY HILL	2		•	•	•	•	•	•	•	•	•	
SLOAN BRIDGE	3		•	•	•	•	•	•	•	•	•	
YELLOW BRANCH	4		•	•	•	•	•	•	•	•	•	
LONG CANE RD												
PARSONS MOUNTAIN LAKE	5		•	•	•	•	•	•	•	•	•	
EDGEFIELD RD												
LICK FORK LAKE	6		•	•	•	•	•	•	•	•	•	
ENOREE RD												
BRICK HOUSE	7		•	•	•	•	•	•	•	•	•	
MOLLY'S ROCK	8		•	•	•	•	•	•	•	•	•	
TYGER RD												
BROAD RIVER	9		•	•	•	•	•	•	•	•	•	
WOODS FERRY	10		•	•	•	•	•	•	•	•	•	
WAMBAW RD												
BUCK HALL	11		•	•	•	•	•	•	•	•	•	
WITHERBEE RD												
CANAL	12		•	•	•	•	•	•	•	•	•	
HUGER	13		•	•	•	•	•	•	•	•	•	

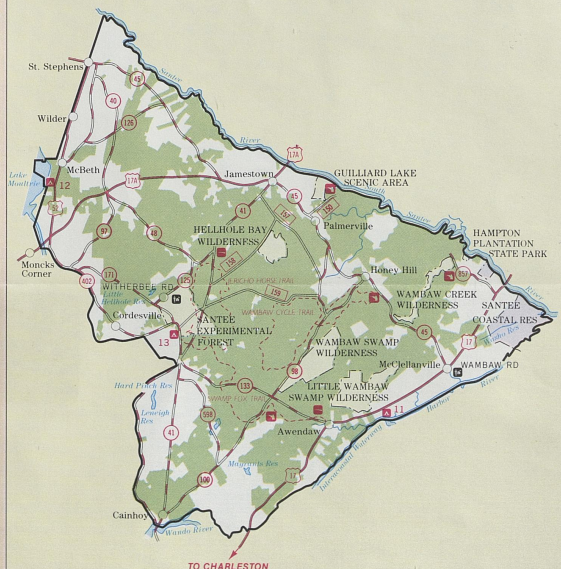


KEY MAP



SUMTER NATIONAL FOREST
(LONG CANE AND EDGEFIELD RANGER DISTRICTS)

FRANCIS MARION NATIONAL FOREST
(WAMBAW AND WITHERBEE RANGER DISTRICTS)



TO CHARLESTON