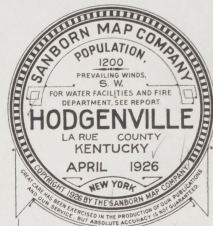


### WATER FACILITIES

Covered by town supply from deep well & driven electric system  
 4" WATER MAINS 100' DIAMETER  
 10" MAINS 24" DIAMETER  
 16" MAINS 36" DIAMETER  
 24" MAINS 54" DIAMETER  
 36" MAINS 84" DIAMETER  
 48" MAINS 126" DIAMETER  
 60" MAINS 156" DIAMETER  
 72" MAINS 186" DIAMETER  
 84" MAINS 216" DIAMETER  
 96" MAINS 246" DIAMETER  
 108" MAINS 276" DIAMETER  
 120" MAINS 306" DIAMETER

### FIRE DEPT

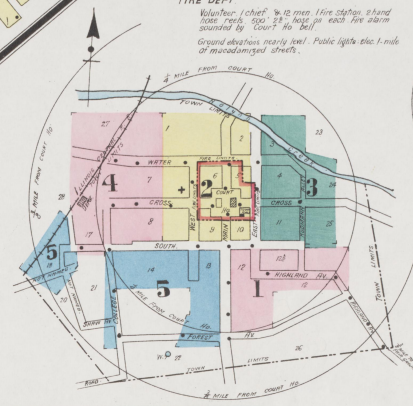
Volunteer 1 Chief & 16 men 1 fire station 2 hand trucks 200' 24" hose per each fire alarm sounded by "COIT No. 2"  
 Ground obstructions nearby level. Public lights elec. 1 mile of macadamized streets.



INCLUDING  
**ATHERTONVILLE**

#### KEY

[Symbol]	CHARLE-ROSETT BLOCK
[Symbol]	BUILDINGS COLORED YELLOW ARE FRAMED
[Symbol]	REAR
[Symbol]	BEEL
[Symbol]	FRONT
[Symbol]	BROWN FIRE PROOF
[Symbol]	RELIGIOUS
[Symbol]	INDUSTRIAL
[Symbol]	RESIDENTIAL
[Symbol]	SHEDS
[Symbol]	WATER TOWER
[Symbol]	WINDMILL
[Symbol]	WINDMILL FOUNDATION
[Symbol]	WINDMILL
[Symbol]	WINDMILL FOUNDATION
[Symbol]	WINDMILL
[Symbol]	WINDMILL FOUNDATION
[Symbol]	WINDMILL
[Symbol]	WINDMILL FOUNDATION
[Symbol]	WINDMILL
[Symbol]	WINDMILL FOUNDATION
[Symbol]	WINDMILL
[Symbol]	WINDMILL FOUNDATION

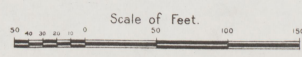
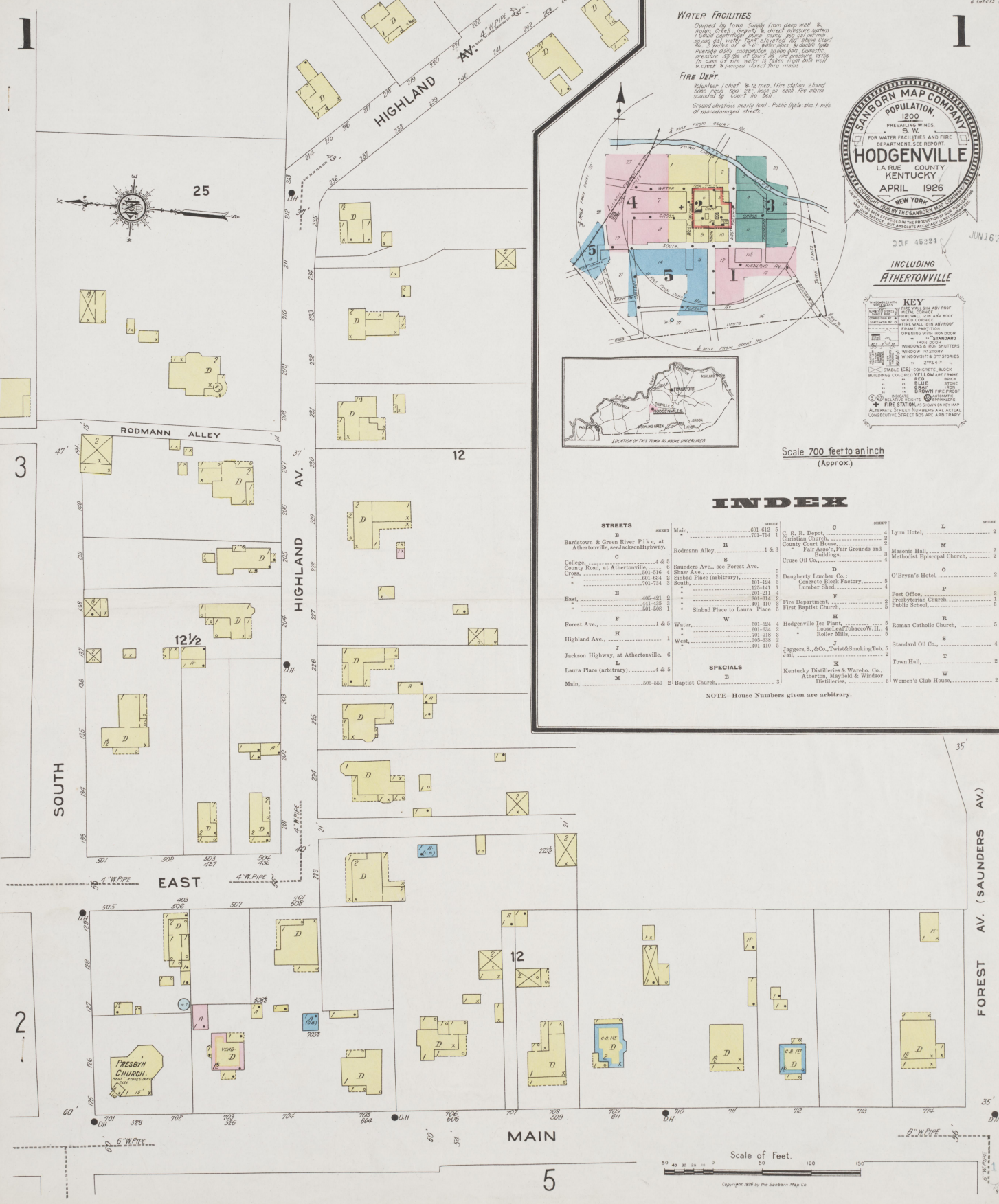


Scale 700 feet to an inch  
 (Approx.)

## INDEX

STREETS	SHEET	MAIN	OTHER	SHEET	OTHER
Bartstown & Green River Pike, at Athertonville, see Jackson Highway.	B	Main	601-812	5	
College, C	C	Main	701-714	1	
Cruse, C	C	Cruse Oil Co.	1	4	Lynn Hotel, L
Cruse Oil Co., C	C	County Court House, Fair Ass'n'n, Fair Grounds and Building.	1 & 3	4	Masonic Hall, M
Cruse Oil Co., C	C	Saunders Ave., see Forest Ave.	5	4	Methodist Episcopal Church, O
County Road, at Athertonville, C	C	Shaw Ave., S	5	5	O'Bryan's Hotel, O
Cruse, C	C	Sinbad Place (arbitrary), S	5	5	Post Office, P
Cruse, C	C	South, S	101-124	2	Presbyterian Church, R
Cruse, C	C	East, E	201-211	2	Public School, S
Cruse, C	C	East, E	301-423	3	
Cruse, C	C	East, E	441-458	2	
Cruse, C	C	East, E	500-500	1	
Forest Ave., F	F	Forest Ave., F	501-504	4	Roman Catholic Church, R
Forest Ave., F	F	Water, W	601-634	2	
Forest Ave., F	F	Water, W	701-715	3	
Forest Ave., F	F	Water, W	802-855	2	
Forest Ave., F	F	Water, W	901-910	5	
Highland Ave., H	H	Highland Ave., H	1	4	Standard Oil Co., S
Highland Ave., H	H	West, W	1	2	
Jackson Highway, at Athertonville, J	J	Jackson Highway, J	601-610	5	Town Hall, T
Laura Place (arbitrary), L	L	Laura Place (arbitrary), L	4 & 5	2	
Main, M	M	Main, M	500-550	3	Women's Club Rooms, W
		SPECIALS			
		Baptist Church, B	3		
		Kentucky Distilleries & Warehouse Co., Atherton, Mayfield & Windsor Distilleries, X			

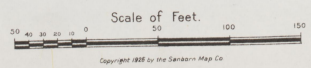
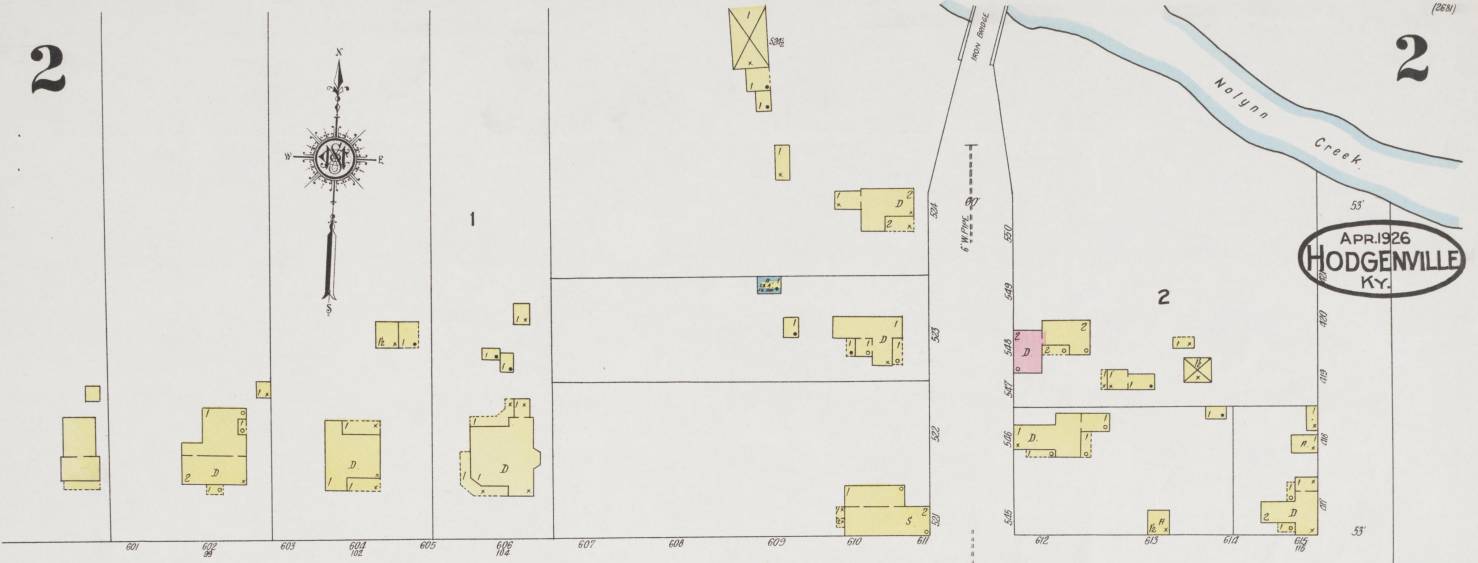
NOTE—House Numbers given are arbitrary.



2

2

APR 1926  
HODGENVILLE  
KY.



5

Copyright 1926 by The Seaman Map Co.

3

(2681)

APR. 1926  
HODGENVILLE  
KY.

3

SCALE 100 FT. TO AN INCH

23

LARUE COUNTY FAIR ASSN.  
FAIR GROUNDS

Located 3/4 Mile S.E. of Court Ho.

53'  
53'

3

WATER

Nolynn  
Creek

2

EAST

4

ALLEY

24

CROSS

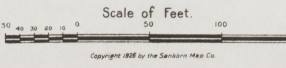
60'

BAPTIST CHURCH  
W. STONE  
CHAIRSELS ETC.

RODMANN

25

SOUTH



Copyright 1926 by the Sanborn Map Co.



4

4

APR. 1926  
HODGENVILLE  
KY.

27



28

7

2

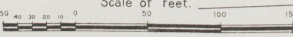
CROSS

5

17

8

SOUTH  
Scale of Feet.



Copyright 1926 by the Sanborn Map Co.

5

5

5

MAIN

APR. 1926  
HODGENVILLE  
KY.

FOREST AV. (SAUNDERS AV.)

22

4

19

21

LAURA PL.

LAURA PL.

20

20

2  
SOUTH

4  
SOUTH ST.

WEST

R. C. CHURCH  
WEST SIDE  
LIGHTS - OIL  
PLUMBING

STANLEY JAGGERS & CO  
MFG. TWIST & SMOKING TOBACCO  
WEST SIDE  
LIGHTS - OIL  
Tobacco Factory No. 62

28  
HODGENVILLE ICE PLANT  
LIGHTS - OIL  
PUMPS - OIL  
ICE FACTORY

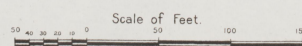
HODGENVILLE ROLLER MILLS  
CAPACITY 25 BLS PER 24 HOURS  
NO WATCHMEN, POWER OFF AND FUEL OIL MUST STAY IN OFF  
LIGHTS - OIL  
FIRE HOSE

DRUGHERTY LUMBER CO.  
CONCRETE BLOCK FACTRY

PUBLIC SCHOOL  
LIGHTS - OIL  
HEAT - STEAM

COLLEGE

SHAW

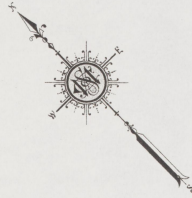


Copyright 1926 by the Sanborn Map Co.



APR 1926  
HODGENVILLE  
KY.

ATHERTONVILLE  
Located 10 1/2 Miles E. of Hodgenville



Scale 100 Ft. to One Inch.  
Copyright 1926 by the Searborn Map Co.