

WATER FACILITIES:

Owned by town - direct pressure system. Supply from 15-acre artificial lake, 10 deep, formed by damming stream, located 1/2 mile E. of Pumping Station & elevated as above same. Water reaches complaining basin, filter bed, & reservoir by gravity & is then pumped direct through mains. Reservoir capacity 100,000 gals. lines 20" ft. below level of business section. Two Fairbanks Morse duplex elec. driven pumps. 1 x 10, 4000 gals. per min. each. One Fairbanks-Morse booster pump in reserve for fire purposes. Domestic pressure 40 lbs. - Fire Pressure 100 lbs. - 24" c. l. pipes & one single hydr. - 2 1/2" valves at 10' to 15' water pipes. Daily consumption: 100,000 gals.

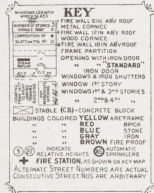
FIRE DEPT.:

Volunteer, not organized. Federal comb. hose & chem motor truck, 40 gal. chem. tank, 400 ft. chem. hose, 100 ft. 1 1/2" C. R. L. hose - two hand hose reels, 300 ft. 1 1/2" C. R. L. hose on each. One fire alarm box in reserve. Fire alarm, siren on roof of fire No. 1 fire station box on door of fire No. - No fire limits.

Streets paved - Grades level - Public lights - Elec.



SCALE 700 FT. TO AN INCH



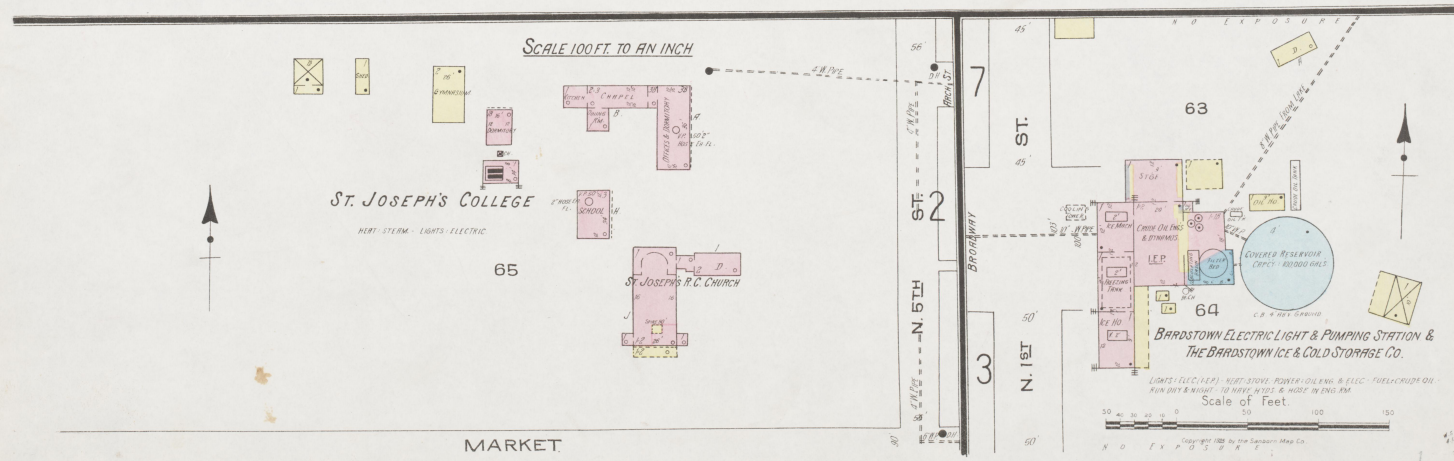
LOCATION OF THIS TOWN AS INDICATED

INDEX

STREETS		STREETS	
STREET	NO.	STREET	NO.
Arch	1-28	Main	289-307
"	29-40	"	315-342
"	41-54	"	349-379
"	55-62	"	401-414
		"	416-429
		"	1001-1025
		"	1201-1232
		"	81-91
		"	92-108
		"	109-120
		"	121-143
		"	144-151
		"	152-159
		"	N. S. W. of Fifth
		"	Moore
		"	O'Bryan Ave.
		"	103-112
		"	116-121
		"	185-206
		"	207-228
		"	229-252
		"	253-245
		"	246-276
		"	1003-1023
		"	19-35
		"	289-307
		"	315-342
		"	349-379
		"	401-414
		"	416-429
		"	1001-1025
		"	1201-1232
		"	101-1010
		"	near A. G. Foster's Flour Mill
		"	401-434
		"	501-540
		"	6
		"	(Colored)
		"	7
		"	4
		"	3
		"	9
		"	13-25
		"	5
		"	6
		"	7
		"	4
		"	3
		"	9
		"	4
		"	3
		"	4
		"	4
		"	2
		"	2
		"	7
		"	1
		"	1
		"	2
		"	2
		"	4
		"	3
		"	4
		"	9

SPECIALS

NOTE.—House Numbers given are arbitrary.



SCALE 100 FT. TO AN INCH

Scale of Feet

Copyright 1925 by the Bardstovm Map Co.

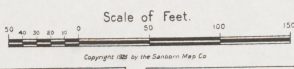
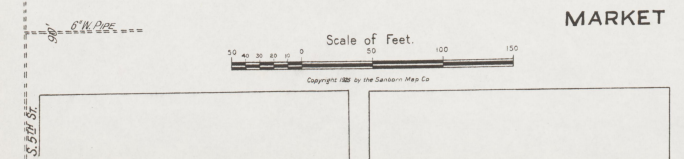
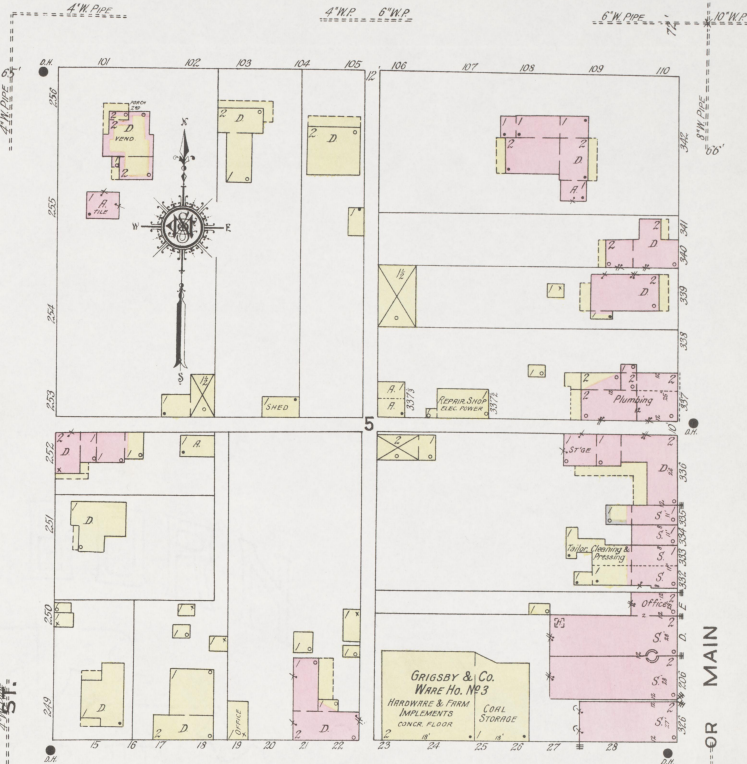
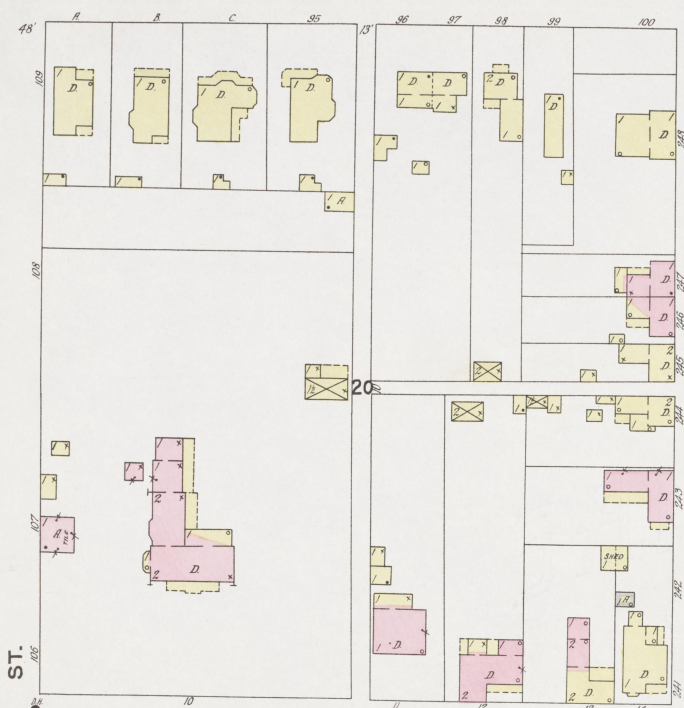
2

6

MAR. 1925
BARDSTOWN
KY.

2

BROADWAY



MARKET

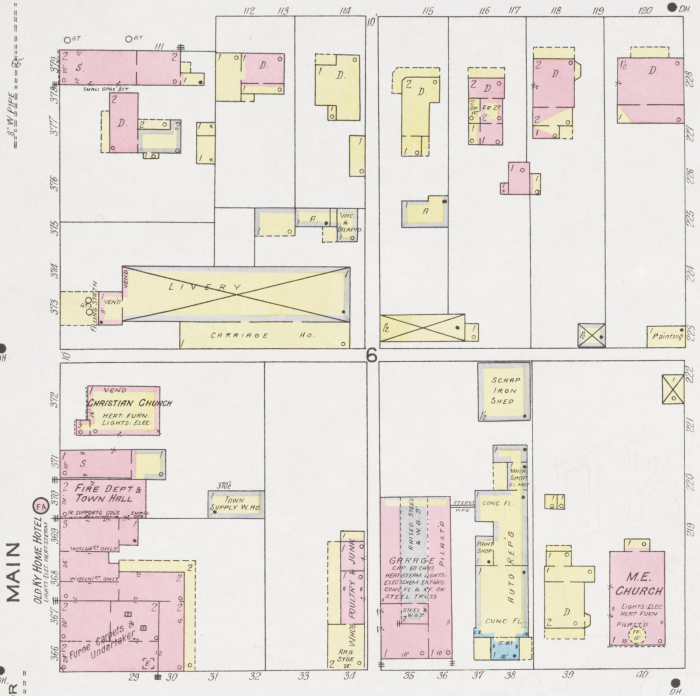
S. 5th St.

S. 4th St.

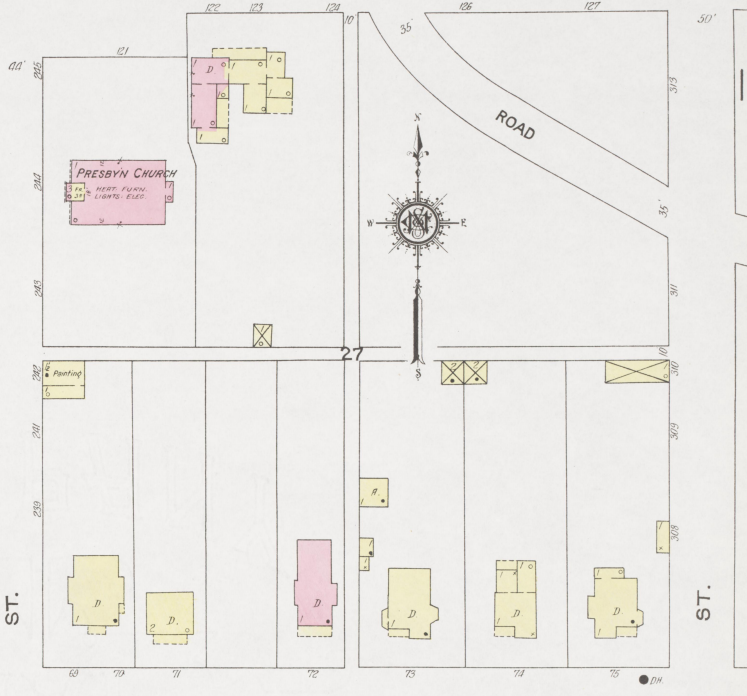
N. 5th St. OR MAIN ST. N. 3rd St.

4

BROADWAY



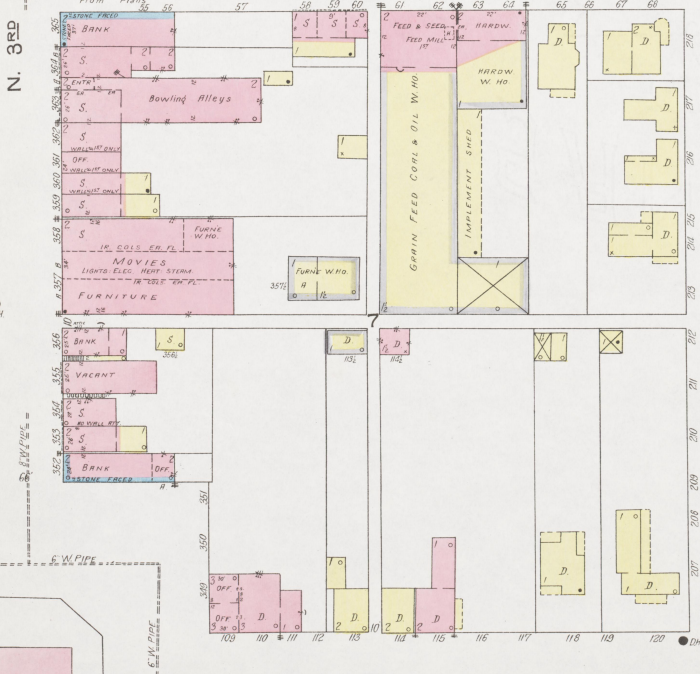
MAIN
20th HOME HOTEL



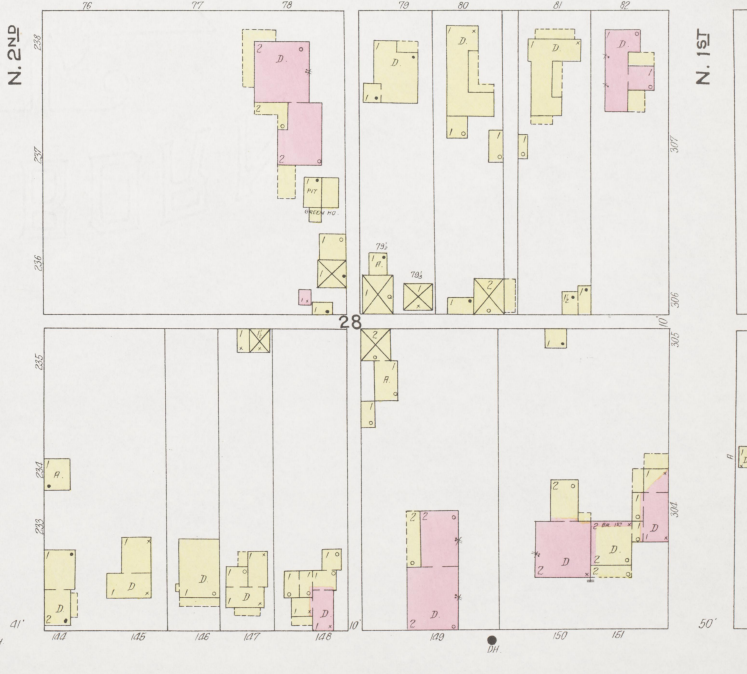
ST.

ST.

ARCH

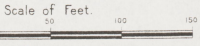


N. 3RD

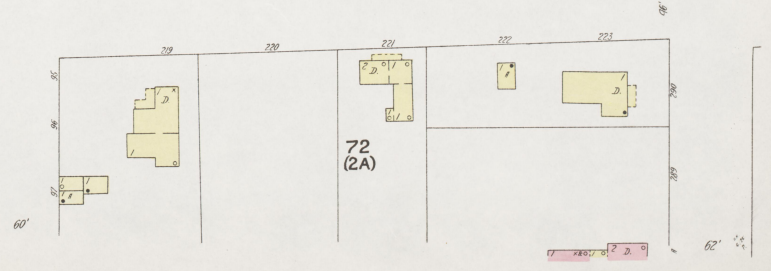
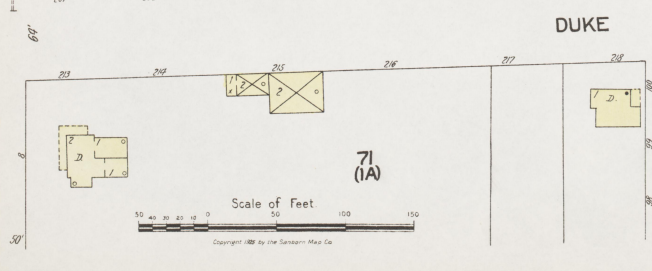
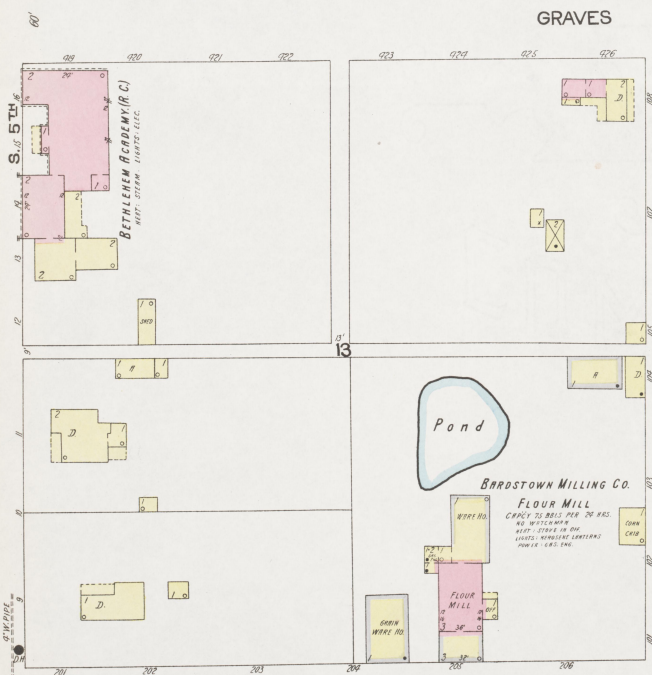
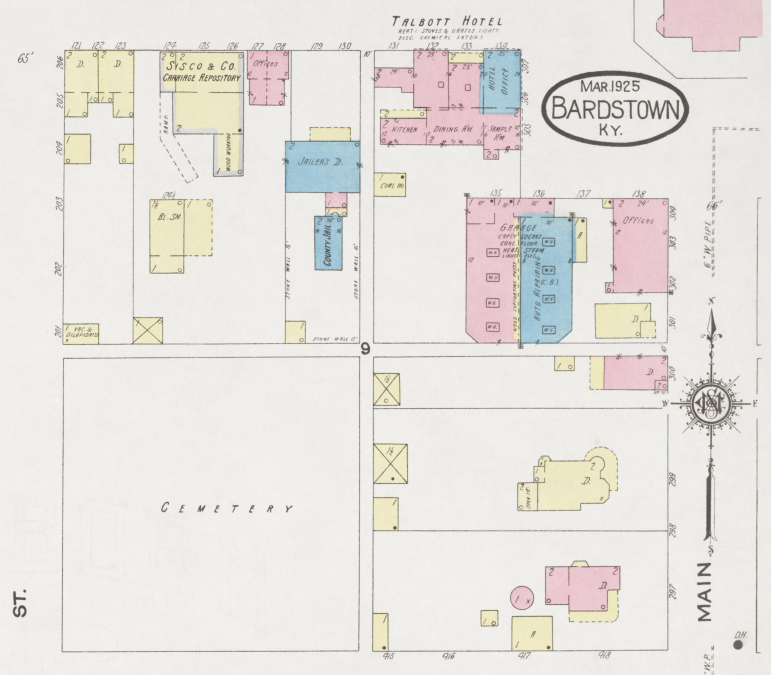
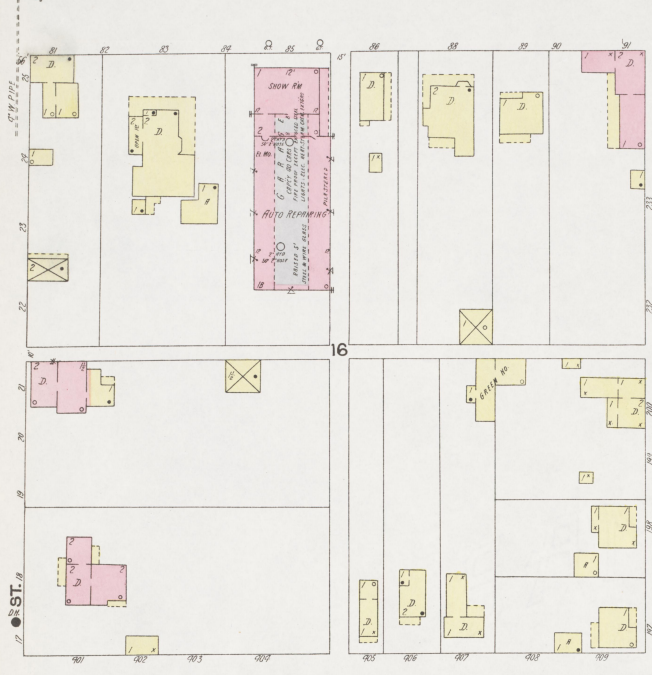


N. 2ND

N. 2ND



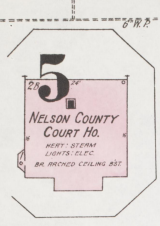
MARKET



MAR 1925
BARDSTOWN
KY.



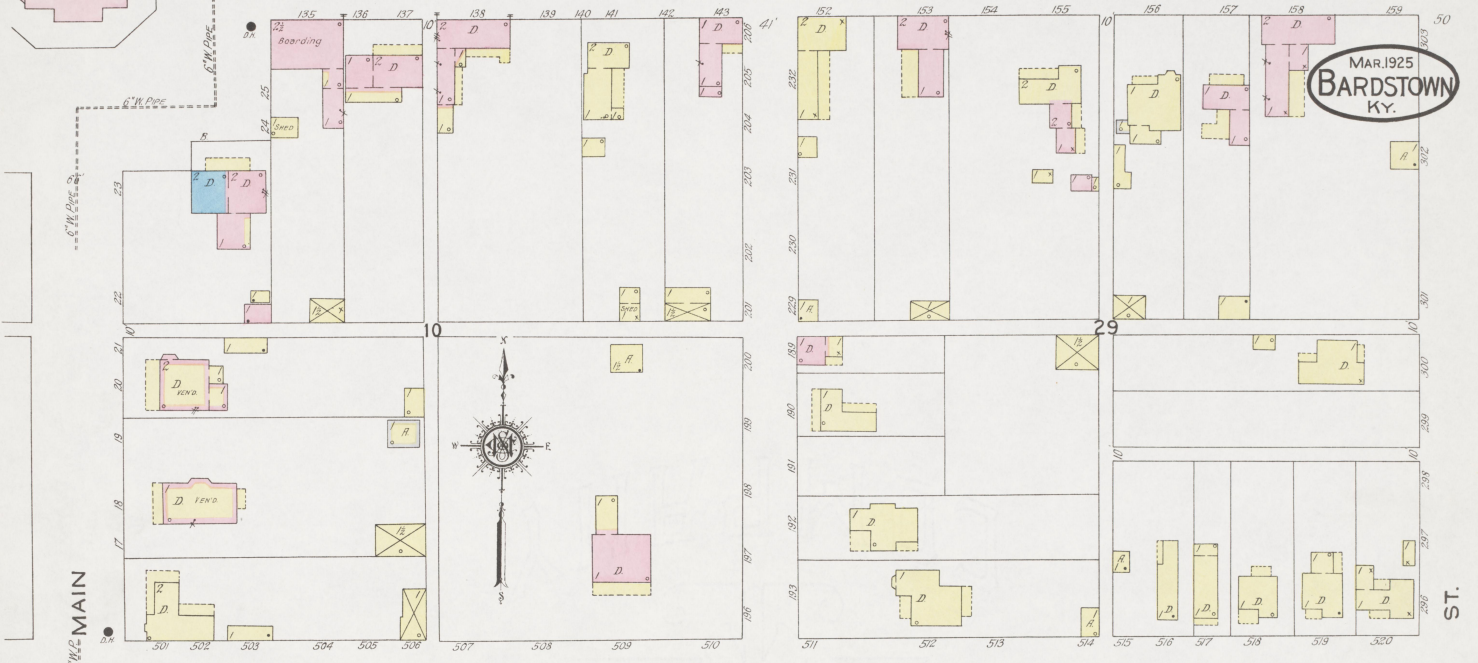
Scale of Feet
0 25 50 75 100 125 150
Copyright 1925 by the Sanborn Map Co.



5
N. 1ST ST
(2074)

MARKET

MAR. 1925
BARDSTOWN
KY.

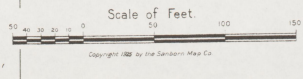


GRAVES



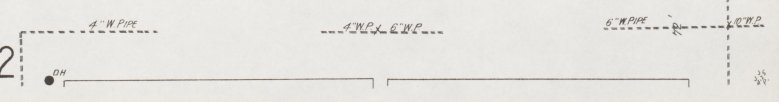
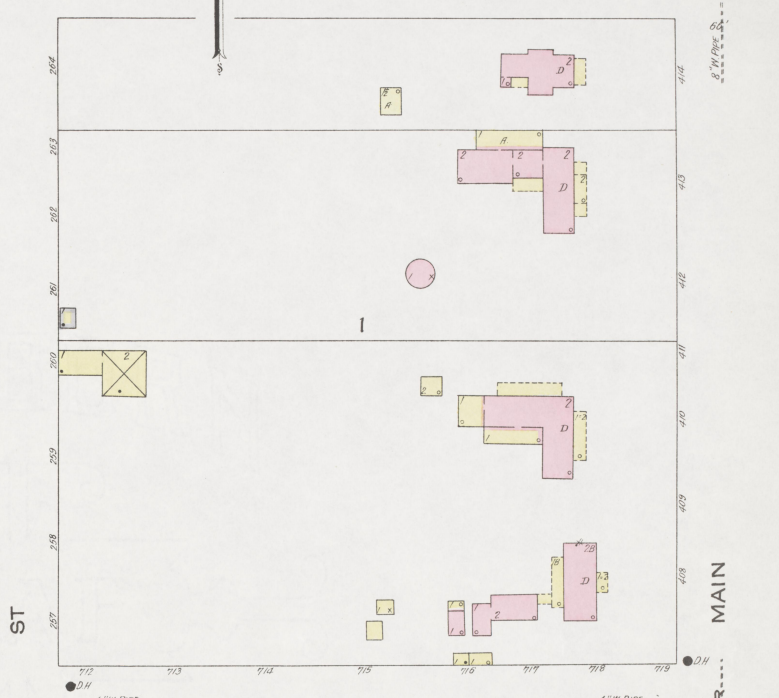
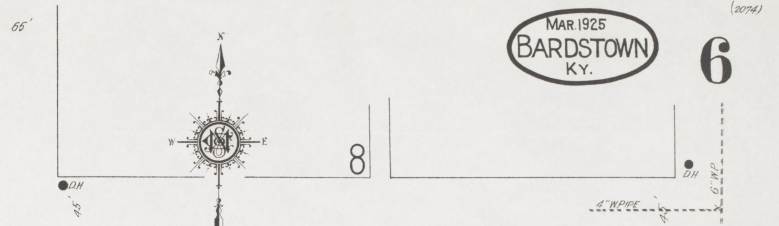
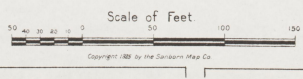
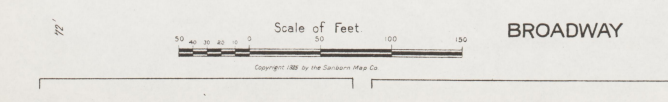
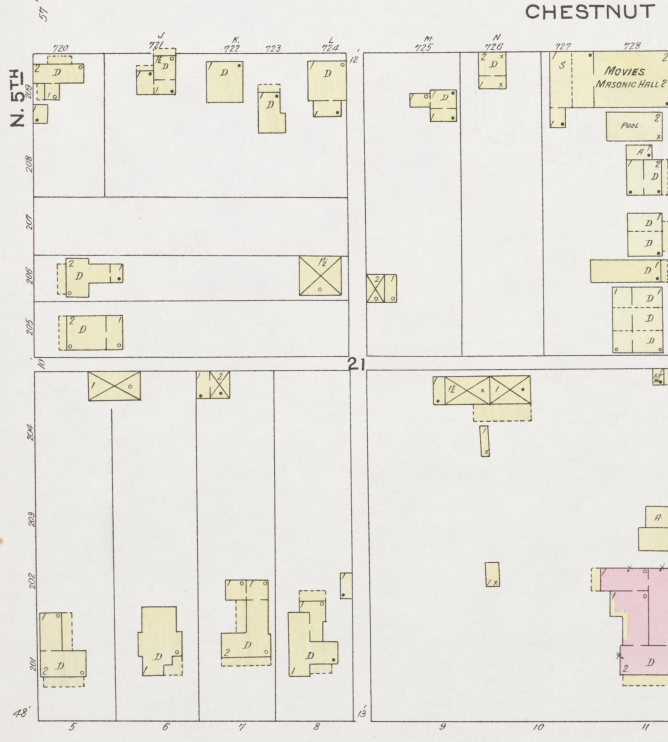
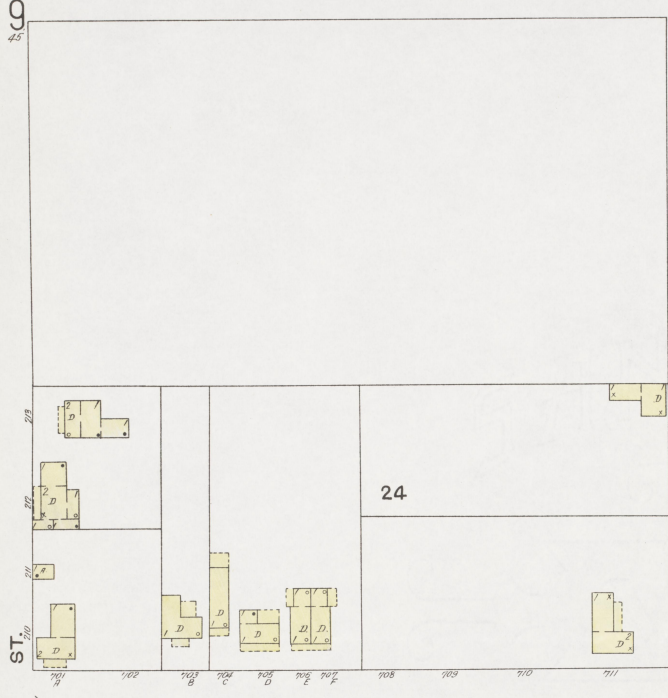
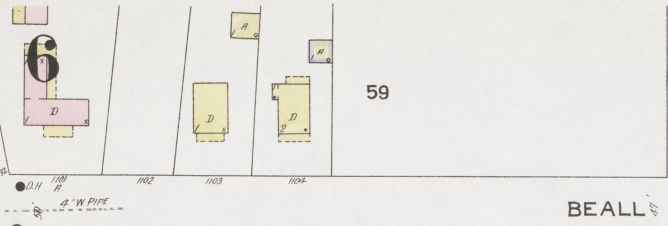
DUKE

73
(1A)



74
(2A)

Copyright 1925 by the Sandborn Map Co



MAR 1925
BARDSTOWN
 KY. **6**

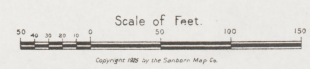
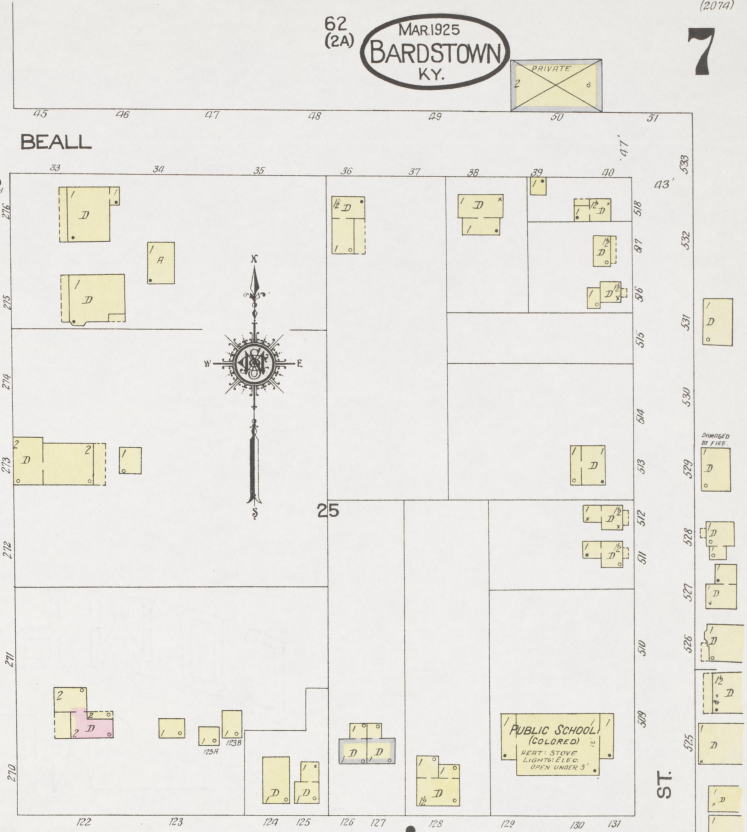


(2076)

MAIN
DR.
7

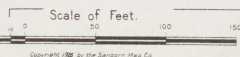
BROADWAY

62 (2A) MAR 1925 BARDSTOWN KY.





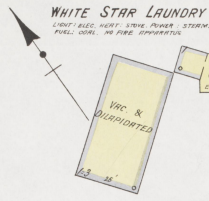
MAR 1925
BARDSTOWN
KY.



Copyright 1925 by the Sanborn Map Co.

9

NO EXPOSURE



Located 1 Mile W. of Court Ho.

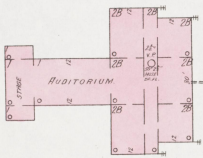
BARDSTOWN & BOSTON RD.

53

NO EXPOSURE

NO EXPOSURE

BARDSTOWN PUBLIC SCHOOL



SHEPHERDVILLE RD.

BEALL ST.

N. 5TH ST.

56

NO EXPOSURE

NO EXPOSURE

HURST, BROWN HARDWARE CO

Stables & Wagon Hds.

GREEN WARE

CHEMERY

56 (1A)

A. G. POSTERS FLOUR MILL

HEAT. STERN. LIGHT. ELEC.

O'BRYAN AV.

HALSTEAD AV.

9

MAR 1925
BARDSTOWN
KY.

54

DAUGHERTY AV.

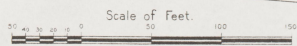
AV.

ST. OR MAIN N. 3RD

MOORE

57 (2A)

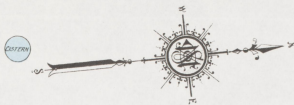
O'BRYAN AV.



Copyright 1925 by the Standard Map Co.



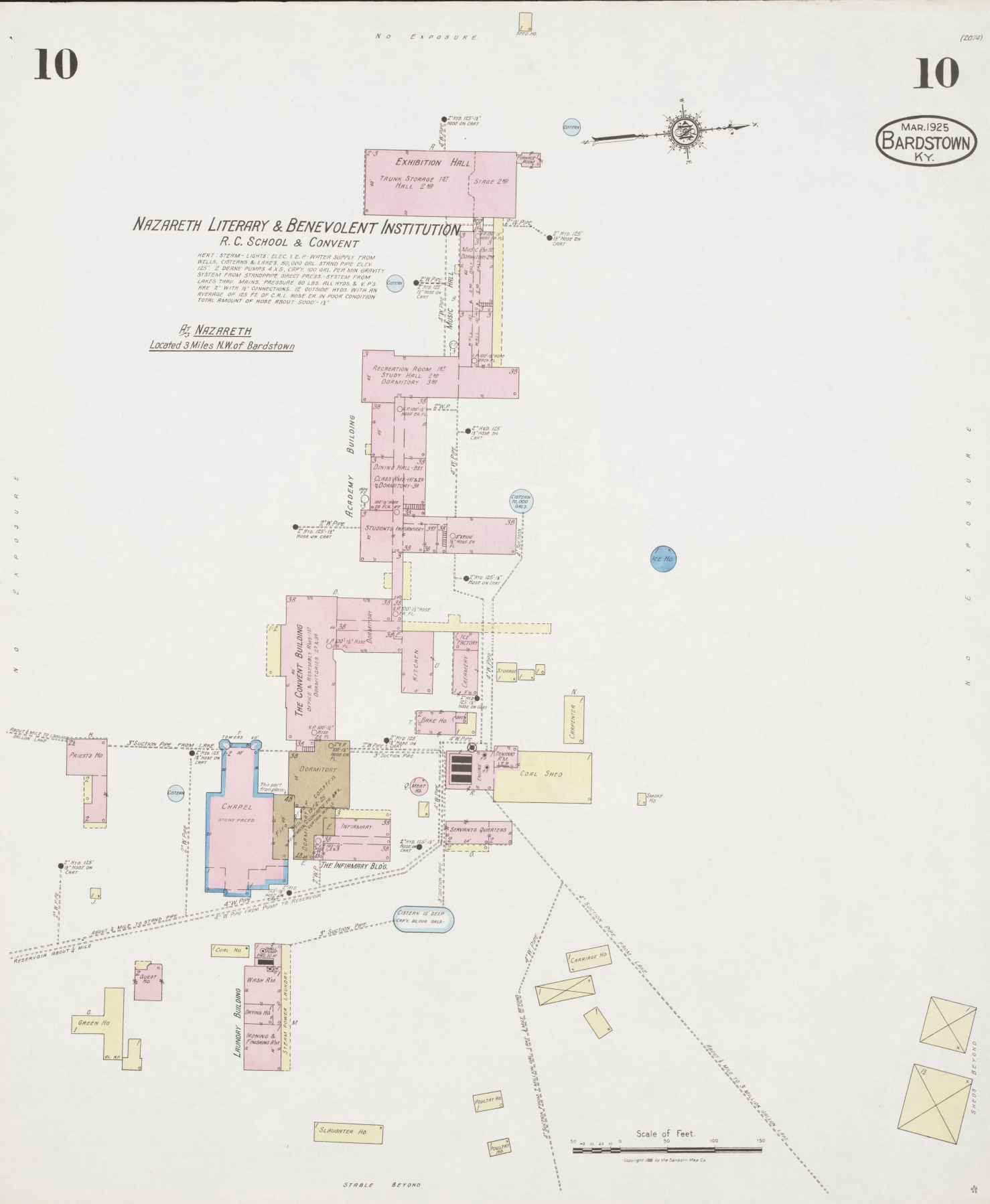
MAR. 1925
BARDSTOWN
KY.



NAZARETH LITERARY & BENEVOLENT INSTITUTION R. C. SCHOOL & CONVENT

HEAT - STERN - LIGHTS - ELEC. L. E. P. WATER SUPPLY FROM
WELLS, CISTERNS & LAKES. 50,000 GAL. STAND PIPE ELEV.
125'. 2" DESING PUMPS 4 X 5, CAP'Y 100 GAL. PER MIN. GRAVITY
SYSTEM FROM STANDPIPE DIRECT PRESS. SYSTEM FROM
LAKES THRU MAINS. PRESSURE 60 LBS. ALL HYDS. & V. P'S
ARE 2" WITH 1/2" CONNECTIONS. 12 OUTSIDE FIRES WITH AN
AVERAGE OF 125 FT. OF C. R. L. HOSE EX. IN POOR CONDITION
TOTAL AMOUNT OF HOSE ABOUT 5000'-15"

At NAZARETH
Located 3 Miles N.W. of Bardstown



STABLE BEYOND

NO EXPOSURE

STABLE BEYOND