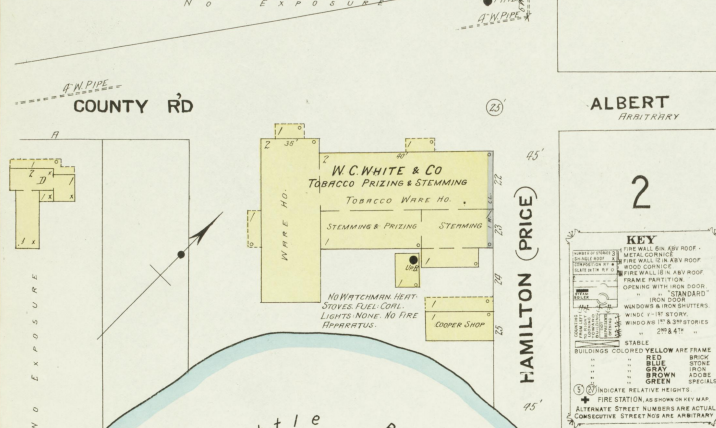


**WATER FACILITIES:** Gravity & direct pressure system. 10000 Gall. Stand Pipe elevated about 55' above Court Ho. Served by one Sanborn Governor P. Valve, 3000 lbs. per Sq. In. and one Governor-General P. Valve. 1000 Gals. per Hour. About one mile of 6" w/c Water Mains. 8 double hydrants, 10 hydrants which pump from Little River & never failing Spring. Domestic pressure 40 lbs. fire pressure 20 lbs.

**FIRE DEPT:** Volunteer, 6 men. No Steam Engine. 4 hand Reels. No Ladder Truck. 300 2 1/2" First Class hose. Alarm given by bells & gongs.

Grades uneven. No lights. Artificial Streets macadamized.



### INDEX.

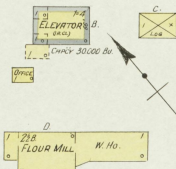
SPECIALS.	HEET	Glen Hotel,.....	G	HEET
A	1	Alexander Bros., Ice Factory.....	H	3
B	3	Baptist Church.....	M	2
C	4	Cadiz Hotel.....	P	2
		R. R. Depots.....	Planners' Protective Association.....	4
		Shops.....	Post Office.....	3
		Revol. Printing.....	Public Schools.....	3 & 4
		Roller Mills and Elevator.....	S	
		Warehouse and Storage Co.....	1 Street, F. T., Tobacco Prizing.....	1
		Christian Church.....	W	
		County Court House and Jail.....	White, W. C., & Co., Tobacco Prizing and Stem'g.....	1
		Crutchfield, L. M., Tobacco Prizing.....	Woodruff, W. B., Planing Mill.....	2



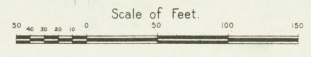
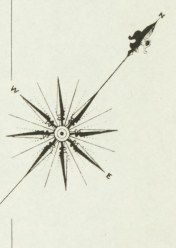
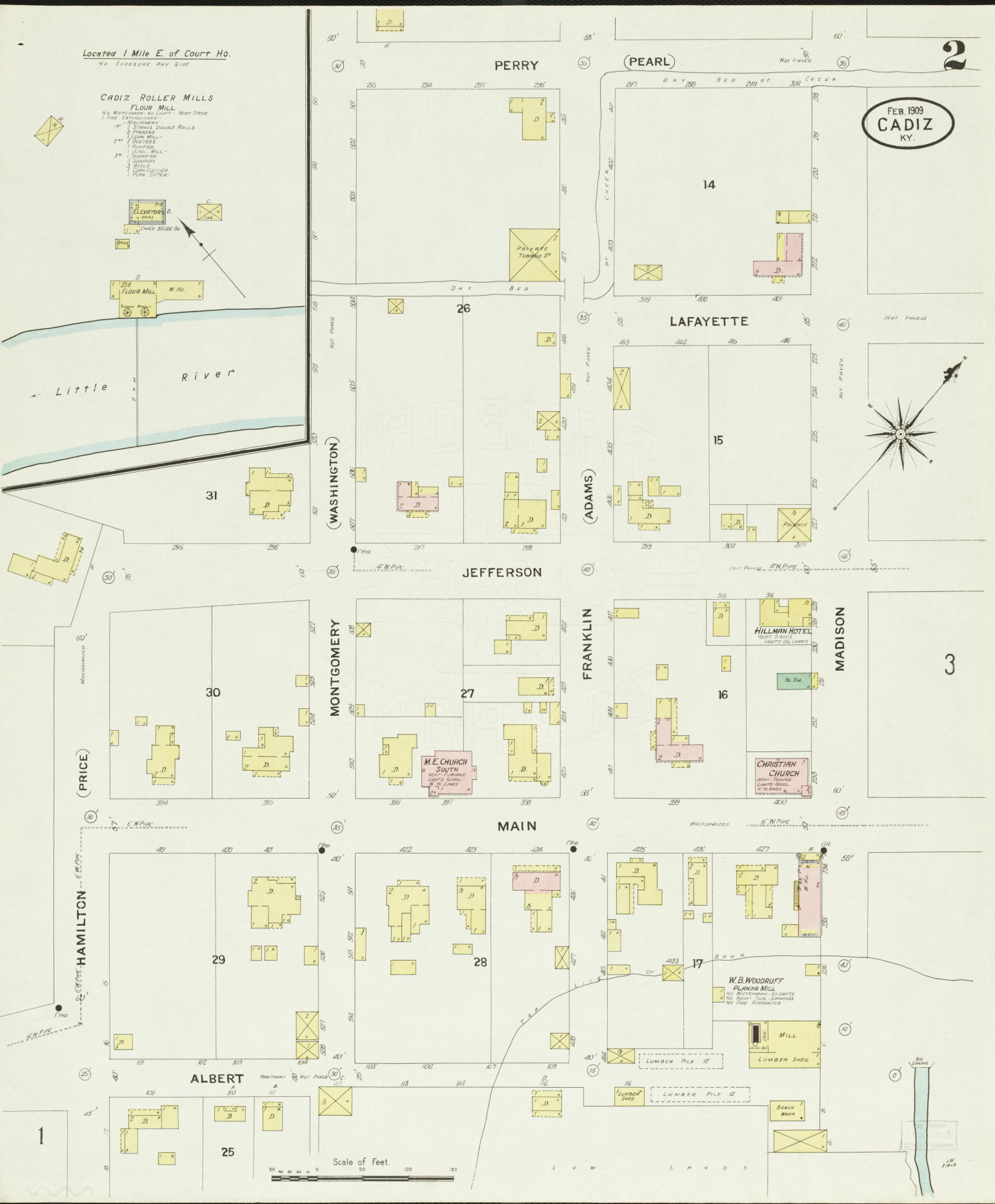
Located 1 Mile E. of Court Ho.  
No EXPOSURE ANY SIDE

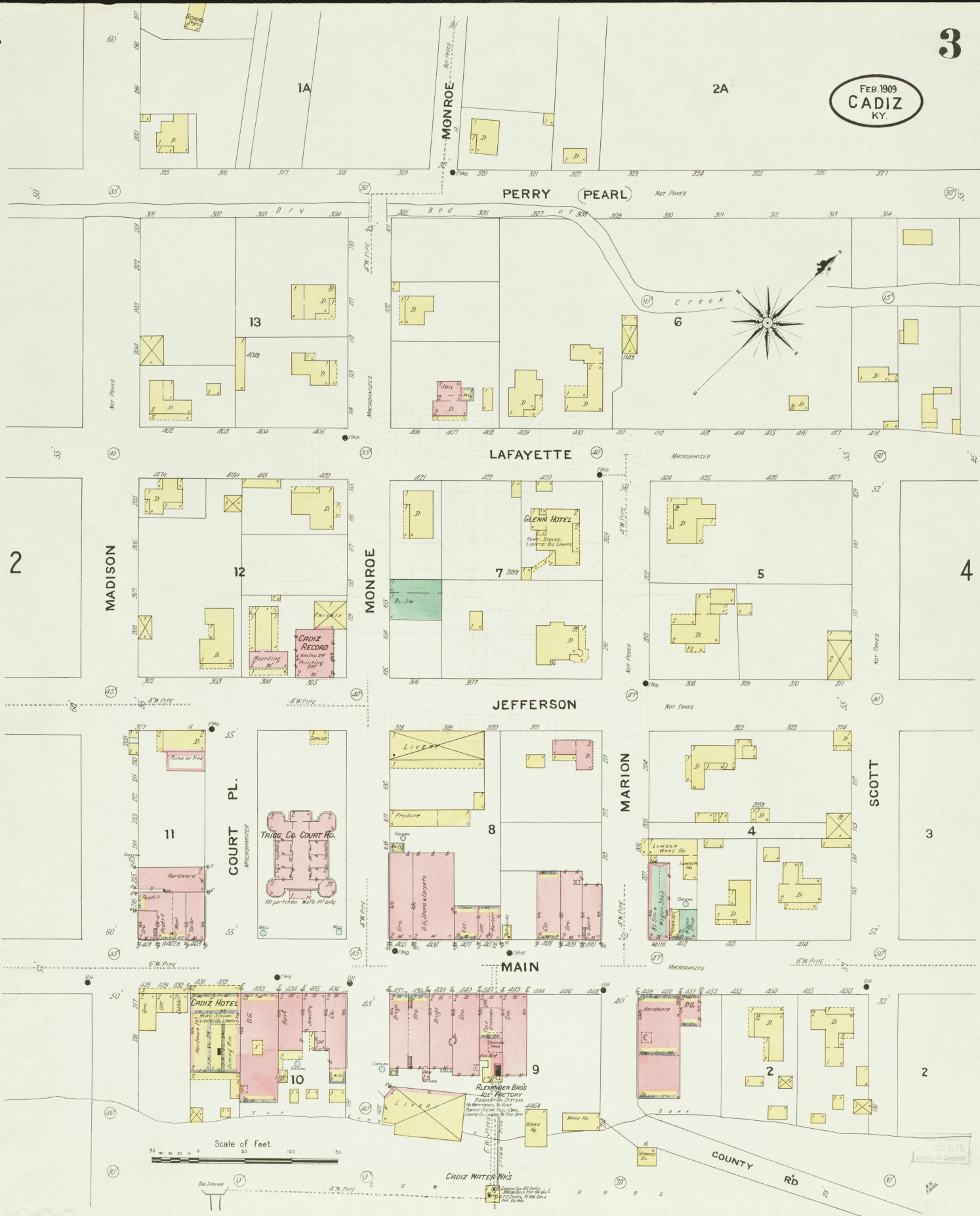
**CADIZ ROLLER MILLS**

- FLOUR MILL**  
 No WATERWORKS - NO LIGHTS - HEAT-STEVE  
 1 THE EXTRACTOR  
 2 - BECKMANN  
 3 - DOUBLE ROLL  
 4 - GRINDERS  
 5 - FLOUR MILL  
 6 - PUMPS  
 7 - PUMPS  
 8 - PUMPS  
 9 - PUMPS  
 10 - PUMPS  
 11 - PUMPS  
 12 - PUMPS  
 13 - PUMPS  
 14 - PUMPS  
 15 - PUMPS  
 16 - PUMPS  
 17 - PUMPS  
 18 - PUMPS  
 19 - PUMPS  
 20 - PUMPS  
 21 - PUMPS  
 22 - PUMPS  
 23 - PUMPS  
 24 - PUMPS  
 25 - PUMPS  
 26 - PUMPS  
 27 - PUMPS  
 28 - PUMPS  
 29 - PUMPS  
 30 - PUMPS  
 31 - PUMPS  
 32 - PUMPS  
 33 - PUMPS  
 34 - PUMPS  
 35 - PUMPS  
 36 - PUMPS  
 37 - PUMPS  
 38 - PUMPS  
 39 - PUMPS  
 40 - PUMPS  
 41 - PUMPS  
 42 - PUMPS  
 43 - PUMPS  
 44 - PUMPS  
 45 - PUMPS  
 46 - PUMPS  
 47 - PUMPS  
 48 - PUMPS  
 49 - PUMPS  
 50 - PUMPS  
 51 - PUMPS  
 52 - PUMPS  
 53 - PUMPS  
 54 - PUMPS  
 55 - PUMPS  
 56 - PUMPS  
 57 - PUMPS  
 58 - PUMPS  
 59 - PUMPS  
 60 - PUMPS  
 61 - PUMPS  
 62 - PUMPS  
 63 - PUMPS  
 64 - PUMPS  
 65 - PUMPS  
 66 - PUMPS  
 67 - PUMPS  
 68 - PUMPS  
 69 - PUMPS  
 70 - PUMPS  
 71 - PUMPS  
 72 - PUMPS  
 73 - PUMPS  
 74 - PUMPS  
 75 - PUMPS  
 76 - PUMPS  
 77 - PUMPS  
 78 - PUMPS  
 79 - PUMPS  
 80 - PUMPS  
 81 - PUMPS  
 82 - PUMPS  
 83 - PUMPS  
 84 - PUMPS  
 85 - PUMPS  
 86 - PUMPS  
 87 - PUMPS  
 88 - PUMPS  
 89 - PUMPS  
 90 - PUMPS  
 91 - PUMPS  
 92 - PUMPS  
 93 - PUMPS  
 94 - PUMPS  
 95 - PUMPS  
 96 - PUMPS  
 97 - PUMPS  
 98 - PUMPS  
 99 - PUMPS  
 100 - PUMPS



FEB. 1909  
CADIZ  
KY.

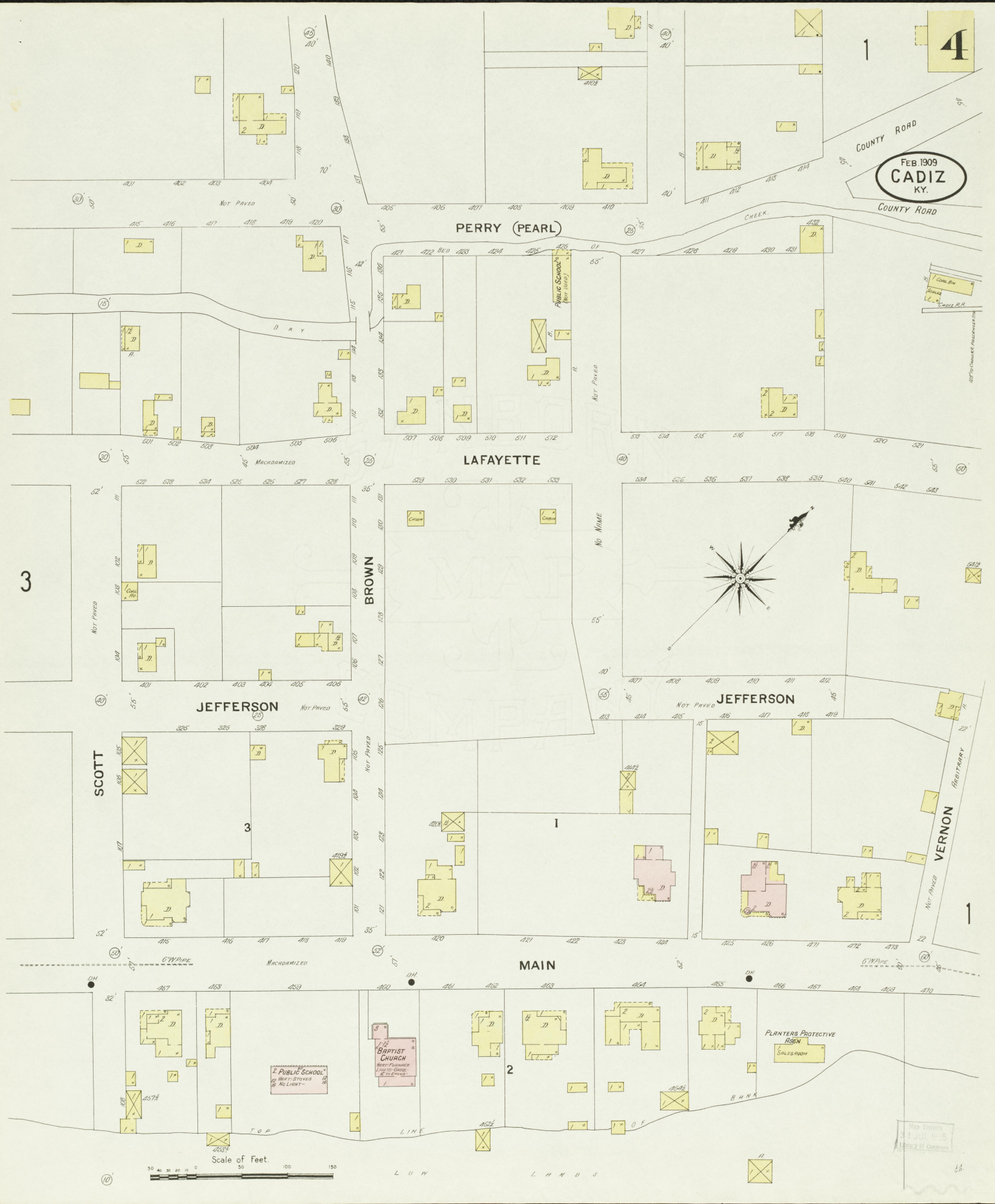




Scale of Feet  
0 50 100 150

1909-1915  
Library of Congress

FEB 1909  
**CADIZ**  
KY.



3

4

PERRY (PEARL)

LAFAYETTE

BROWN

JEFFERSON

SCOTT

JEFFERSON

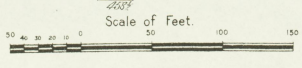
VERNON

MAIN

PUBLIC SCHOOL  
MEET-STORES  
NO LIGHT

BAPTIST CHURCH  
MEET-STORES  
NO LIGHT

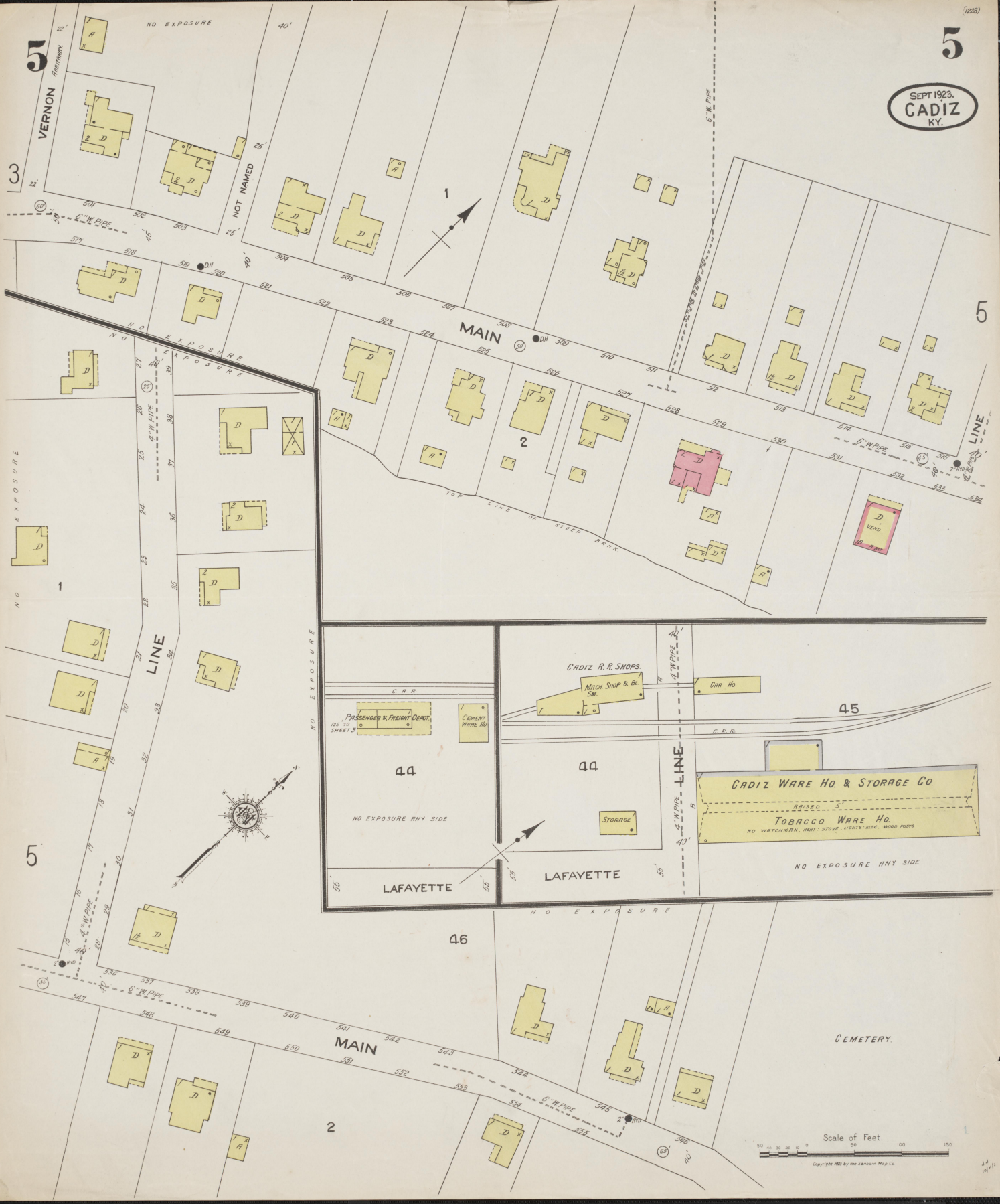
PLANTERS PROTECTIVE  
ASSN  
SALESROOM



Map drawn  
31 Jul 1905  
Lewis & Clark

LOW LANDS

SEPT 1923.  
CADIZ  
KY.



Scale of Feet  
0 50 100 150  
Copyright 1923 by the Sanborn Map Co.