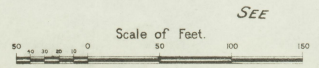
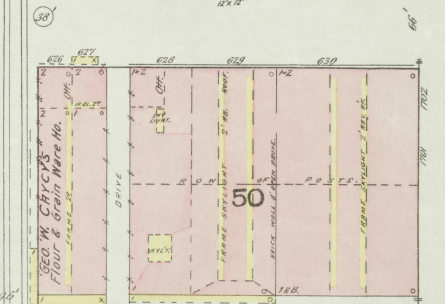
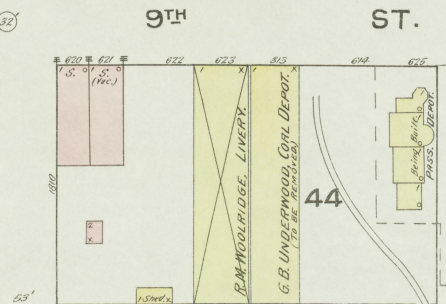
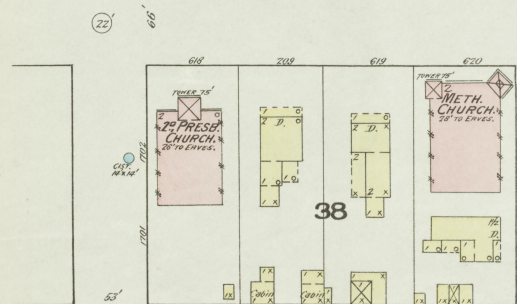
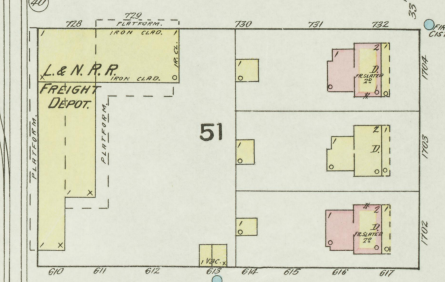
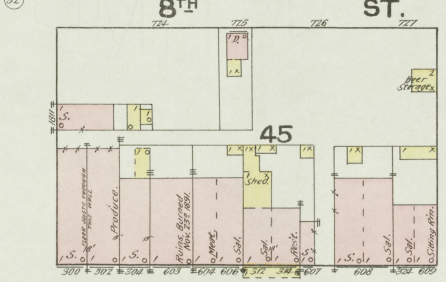
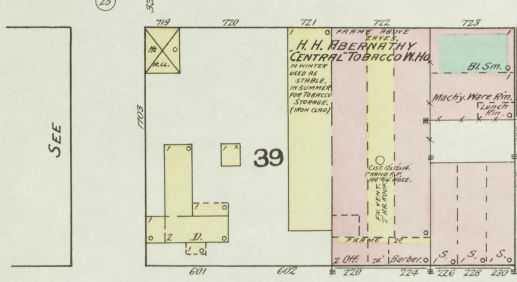
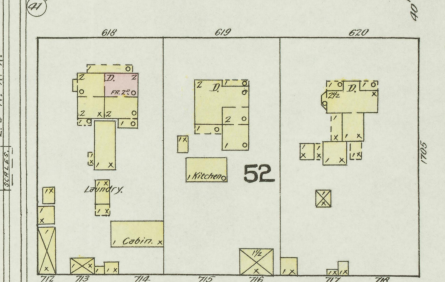
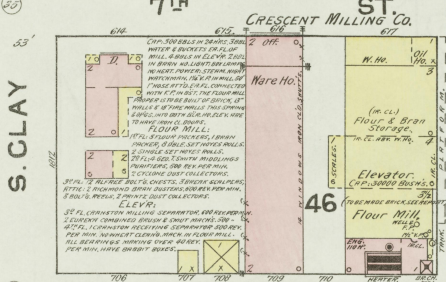
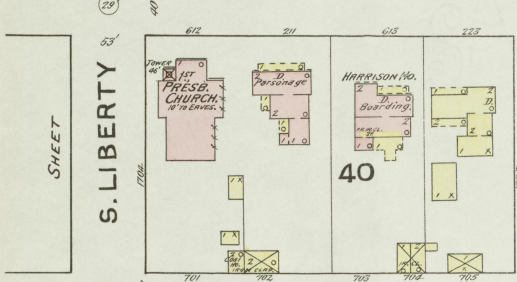
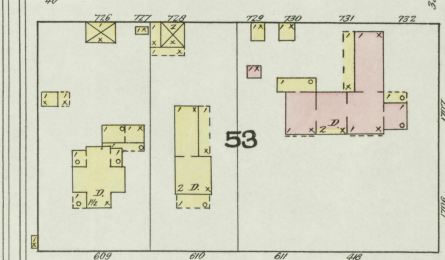
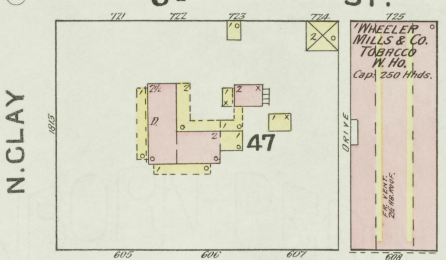
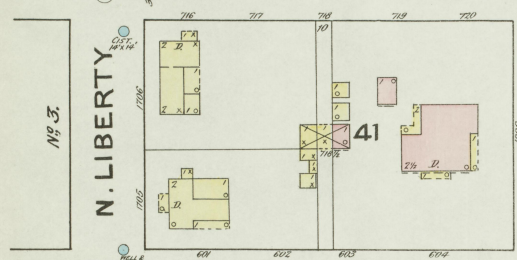
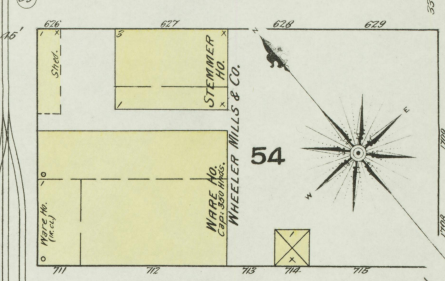
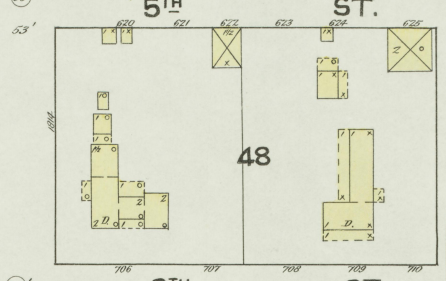
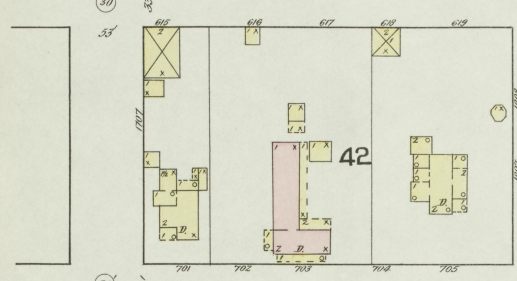
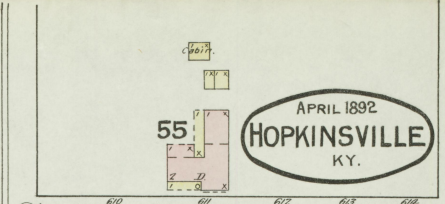
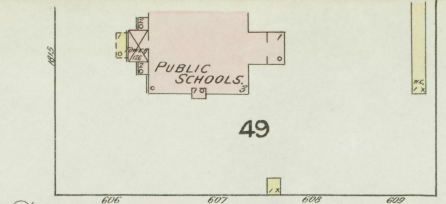
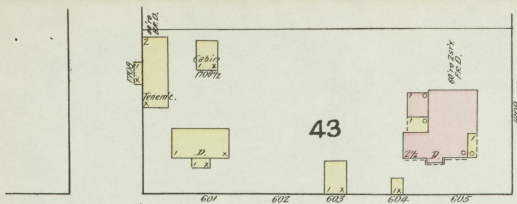


INDEX.

STREETS.	SECT.	SECT.	SECT.	SECT.	
Campbell, N.	2-298	Ninth, E.	1-120	Baptist Church.	B
Clay, N.	2-299	" W.	290-421	Beard's Block, Colored.	2
Court Place.	1-229	Seventh, E.	1-120	Bismarck Carriage Co.	3
Eight, E.	1-229	" W.	290-421	Boose & Wright, Wagon Works.	3
Eleventh, E.	1-229	Sixteenth, W.	100-137	Cayer, G. Flour & Grain Warehouse.	4
Fifteenth, E.	1-229	" W.	100-137	Central Tobacco Warehouse.	4
" W.	1-229	Seventh, E.	1-120	County Court House.	4
Fourth, E.	1-229	" W.	290-421	Crescent Milling Co.	4
Fourth, W.	1-229	Tenth, E.	1-229	" Coopers.	4
Fifth, E.	1-229	" W.	290-421	Cumberland Presbyterian Church.	4
Fourth, W.	1-229	Eleventh, E.	1-229	Dabney, F. W. Tobacco, W. H. & Stemmy, Ducker Carriage Factory.	4
Sixth, E.	1-229	" W.	290-421	Ellis, F. L. & Co. Ice Factory.	4
Seventh, E.	1-229	Twelfth, E.	1-229	Episcopal Church.	4
" W.	1-229	" W.	290-421	Esperanza Mill.	4
Fourth, W.	1-229	Thirteenth, E.	1-229	First Presbyterian Church.	4
Fifth, E.	1-229	" W.	290-421	Holland Opera House.	4
Fourth, W.	1-229	Fourth, E.	1-229	Forbes & Bro. Planing Mill.	4
Sixth, E.	1-229	" W.	290-421	Frederick's Tobacco Wh. & Co.	4
Seventh, E.	1-229	Virginia, N.	1-216	Henry Block.	4
" W.	1-229	" W.	290-421	Hopkinsville Tobacco Wh. & Co. Warehouse.	4
Seventh, W.	1-229	Wider, N.	1-229	Hopkinsville Tobacco Wh. & Co. Warehouse.	4
Eighth, E.	1-229	" W.	290-421	Hotel.	4
" W.	1-229	Main, N.	1-229	Latham, J. C. Tobacco Warehouse.	4
Ninth, E.	1-229	" W.	290-421	L. & N. R. R. Depot.	4
" W.	1-229	Eleventh, E.	1-229	"	4
Tenth, E.	1-229	" W.	290-421	"	4
Eleventh, E.	1-229	Twelfth, E.	1-229	"	4
" W.	1-229	" W.	290-421	"	4
Twelfth, E.	1-229	Thirteenth, E.	1-229	"	4
" W.	1-229	" W.	290-421	"	4
Thirteenth, E.	1-229	Fourteenth, E.	1-229	"	4
" W.	1-229	" W.	290-421	"	4
Fourteenth, E.	1-229	Fifteenth, E.	1-229	"	4
" W.	1-229	" W.	290-421	"	4
Fifteenth, E.	1-229	Sixteenth, E.	1-229	"	4
" W.	1-229	" W.	290-421	"	4
Sixteenth, E.	1-229	Seventeenth, E.	1-229	"	4
" W.	1-229	" W.	290-421	"	4
Seventeenth, E.	1-229	Eighteenth, E.	1-229	"	4
" W.	1-229	" W.	290-421	"	4
Eighteenth, E.	1-229	Nineteenth, E.	1-229	"	4
" W.	1-229	" W.	290-421	"	4
Nineteenth, E.	1-229	Twentieth, E.	1-229	"	4
" W.	1-229	" W.	290-421	"	4
Twentieth, E.	1-229	Twenty-first, E.	1-229	"	4
" W.	1-229	" W.	290-421	"	4
Twenty-first, E.	1-229	Twenty-second, E.	1-229	"	4
" W.	1-229	" W.	290-421	"	4
Twenty-second, E.	1-229	Twenty-third, E.	1-229	"	4
" W.	1-229	" W.	290-421	"	4
Twenty-third, E.	1-229	Twenty-fourth, E.	1-229	"	4
" W.	1-229	" W.	290-421	"	4
Twenty-fourth, E.	1-229	Twenty-fifth, E.	1-229	"	4
" W.	1-229	" W.	290-421	"	4
Twenty-fifth, E.	1-229	Twenty-sixth, E.	1-229	"	4
" W.	1-229	" W.	290-421	"	4
Twenty-sixth, E.	1-229	Twenty-seventh, E.	1-229	"	4
" W.	1-229	" W.	290-421	"	4
Twenty-seventh, E.	1-229	Twenty-eighth, E.	1-229	"	4
" W.	1-229	" W.	290-421	"	4
Twenty-eighth, E.	1-229	Twenty-ninth, E.	1-229	"	4
" W.	1-229	" W.	290-421	"	4
Twenty-ninth, E.	1-229	Thirtieth, E.	1-229	"	4
" W.	1-229	" W.	290-421	"	4
Thirtieth, E.	1-229	Thirty-first, E.	1-229	"	4
" W.	1-229	" W.	290-421	"	4
Thirty-first, E.	1-229	Thirty-second, E.	1-229	"	4
" W.	1-229	" W.	290-421	"	4
Thirty-second, E.	1-229	Thirty-third, E.	1-229	"	4
" W.	1-229	" W.	290-421	"	4
Thirty-third, E.	1-229	Thirty-fourth, E.	1-229	"	4
" W.	1-229	" W.	290-421	"	4
Thirty-fourth, E.	1-229	Thirty-fifth, E.	1-229	"	4
" W.	1-229	" W.	290-421	"	4
Thirty-fifth, E.	1-229	Thirty-sixth, E.	1-229	"	4
" W.	1-229	" W.	290-421	"	4
Thirty-sixth, E.	1-229	Thirty-seventh, E.	1-229	"	4
" W.	1-229	" W.	290-421	"	4
Thirty-seventh, E.	1-229	Thirty-eighth, E.	1-229	"	4
" W.	1-229	" W.	290-421	"	4
Thirty-eighth, E.	1-229	Thirty-ninth, E.	1-229	"	4
" W.	1-229	" W.	290-421	"	4
Thirty-ninth, E.	1-229	Fortieth, E.	1-229	"	4
" W.	1-229	" W.	290-421	"	4
Fortieth, E.	1-229	Forty-first, E.	1-229	"	4
" W.	1-229	" W.	290-421	"	4
Forty-first, E.	1-229	Forty-second, E.	1-229	"	4
" W.	1-229	" W.	290-421	"	4
Forty-second, E.	1-229	Forty-third, E.	1-229	"	4
" W.	1-229	" W.	290-421	"	4
Forty-third, E.	1-229	Forty-fourth, E.	1-229	"	4
" W.	1-229	" W.	290-421	"	4
Forty-fourth, E.	1-229	Forty-fifth, E.	1-229	"	4
" W.	1-229	" W.	290-421	"	4
Forty-fifth, E.	1-229	Forty-sixth, E.	1-229	"	4
" W.	1-229	" W.	290-421	"	4
Forty-sixth, E.	1-229	Forty-seventh, E.	1-229	"	4
" W.	1-229	" W.	290-421	"	4
Forty-seventh, E.	1-229	Forty-eighth, E.	1-229	"	4
" W.	1-229	" W.	290-421	"	4
Forty-eighth, E.	1-229	Forty-ninth, E.	1-229	"	4
" W.	1-229	" W.	290-421	"	4
Forty-ninth, E.	1-229	Fiftieth, E.	1-229	"	4
" W.	1-229	" W.	290-421	"	4
Fiftieth, E.	1-229	Fifty-first, E.	1-229	"	4
" W.	1-229	" W.	290-421	"	4
Fifty-first, E.	1-229	Fifty-second, E.	1-229	"	4
" W.	1-229	" W.	290-421	"	4
Fifty-second, E.	1-229	Fifty-third, E.	1-229	"	4
" W.	1-229	" W.	290-421	"	4
Fifty-third, E.	1-229	Fifty-fourth, E.	1-229	"	4
" W.	1-229	" W.	290-421	"	4
Fifty-fourth, E.	1-229	Fifty-fifth, E.	1-229	"	4
" W.	1-229	" W.	290-421	"	4
Fifty-fifth, E.	1-229	Fifty-sixth, E.	1-229	"	4
" W.	1-229	" W.	290-421	"	4
Fifty-sixth, E.	1-229	Fifty-seventh, E.	1-229	"	4
" W.	1-229	" W.	290-421	"	4
Fifty-seventh, E.	1-229	Fifty-eighth, E.	1-229	"	4
" W.	1-229	" W.	290-421	"	4
Fifty-eighth, E.	1-229	Fifty-ninth, E.	1-229	"	4
" W.	1-229	" W.	290-421	"	4
Fifty-ninth, E.	1-229	Sixtieth, E.	1-229	"	4
" W.	1-229	" W.	290-421	"	4
Sixtieth, E.	1-229	Sixty-first, E.	1-229	"	4
" W.	1-229	" W.	290-421	"	4
Sixty-first, E.	1-229	Sixty-second, E.	1-229	"	4
" W.	1-229	" W.	290-421	"	4
Sixty-second, E.	1-229	Sixty-third, E.	1-229	"	4
" W.	1-229	" W.	290-421	"	4
Sixty-third, E.	1-229	Sixty-fourth, E.	1-229	"	4
" W.	1-229	" W.	290-421	"	4
Sixty-fourth, E.	1-229	Sixty-fifth, E.	1-229	"	4
" W.	1-229	" W.	290-421	"	4
Sixty-fifth, E.	1-229	Sixty-sixth, E.	1-229	"	4
" W.	1-229	" W.	290-421	"	4
Sixty-sixth, E.	1-229	Sixty-seventh, E.	1-229	"	4
" W.	1-229	" W.	290-421	"	4
Sixty-seventh, E.	1-229	Sixty-eighth, E.	1-229	"	4
" W.	1-229	" W.	290-421	"	4
Sixty-eighth, E.	1-229	Sixty-ninth, E.	1-229	"	4
" W.	1-229	" W.	290-421	"	4
Sixty-ninth, E.	1-229	Seventieth, E.	1-229	"	4
" W.	1-229	" W.	290-421	"	4
Seventieth, E.	1-229	Seventy-first, E.	1-229	"	4
" W.	1-229	" W.	290-421	"	4
Seventy-first, E.	1-229	Seventy-second, E.	1-229	"	4
" W.	1-229	" W.	290-421	"	4
Seventy-second, E.	1-229	Seventy-third, E.	1-229	"	4
" W.	1-229	" W.	290-421	"	4
Seventy-third, E.	1-229	Seventy-fourth, E.	1-229	"	4
" W.	1-229	" W.	290-421	"	4
Seventy-fourth, E.	1-229	Seventy-fifth, E.	1-229	"	4
" W.	1-229	" W.	290-421	"	4
Seventy-fifth, E.	1-229	Seventy-sixth, E.	1-229	"	4
" W.	1-229	" W.	290-421	"	4
Seventy-sixth, E.	1-229	Seventy-seventh, E.	1-229	"	4
" W.	1-229	" W.	290-421	"	4
Seventy-seventh, E.	1-229	Seventy-eighth, E.	1-229	"	4
" W.	1-229	" W.	290-421	"	4
Seventy-eighth, E.	1-229	Seventy-ninth, E.	1-229	"	4
" W.	1-229	" W.	290-421	"	4
Seventy-ninth, E.	1-229	Eightieth, E.	1-229	"	4
" W.	1-229	" W.	290-421	"	4
Eightieth, E.	1-229	Eighty-first, E.	1-229	"	4
" W.	1-229	" W.	290-421	"	4
Eighty-first, E.	1-229	Eighty-second, E.	1-229	"	4
" W.	1-229	" W.	290-421	"	4
Eighty-second, E.	1-229	Eighty-third, E.	1-229	"	4
" W.	1-229	" W.	290-421	"	4
Eighty-third, E.	1-229	Eighty-fourth, E.	1-229	"	4
" W.	1-229	" W.	290-421	"	4
Eighty-fourth, E.	1-229	Eighty-fifth, E.	1-229	"	4
" W.	1-229	" W.	290-421	"	4
Eighty-fifth, E.	1-229	Eighty-sixth, E.	1-229	"	4
" W.	1-229	" W.	290-421	"	4
Eighty-sixth, E.	1-229	Eighty-seventh, E.	1-229	"	4
" W.	1-229	" W.	290-421	"	4
Eighty-seventh, E.	1-229	Eighty-eighth, E.	1-229	"	4
" W.	1-229	" W.	290-421	"	4
Eighty-eighth, E.	1-229	Eighty-ninth, E.	1-229	"	4
" W.	1-229	" W.	290-421	"	4
Eighty-ninth, E.	1-229	Ninety, E.	1-229	"	4
" W.	1-229	" W.	290-421	"	4
Ninety, E.	1-229	Ninety-first, E.	1-229	"	4
" W.	1-229	" W.	290-421	"	4
Ninety-first, E.	1-229	Ninety-second, E.	1-229	"	4
" W.	1-229	" W.	290-421	"	4
Ninety-second, E.	1-229	Ninety-third, E.	1-229	"	4
" W.	1-229	" W.	290-421	"	4
Ninety-third, E.	1-229	Ninety-fourth, E.	1-229	"	4
" W.	1-229	" W.	290-421	"	4
Ninety-fourth, E.	1-229	Ninety-fifth, E.	1-229	"	4
" W.	1-229	" W.	290-421	"	4
Ninety-fifth, E.	1-229	Ninety-sixth, E.	1-229	"	4
" W.	1-229	" W.	290-421	"	4
Ninety-sixth, E.	1-229	Ninety-seventh, E.	1-229	"	4

APRIL 1892
HOPKINSVILLE
KY.



N. LIBERTY

S. LIBERTY

SEE

N. CLAY

S. CLAY

SEE

N. CAMPBELL

S. CAMPBELL

SEE

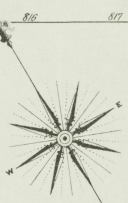
SHEET No 4

SEE SHEET No 1

U.S. GOVERNMENT
LIBRARY OF CONGRESS



APRIL 1892
HOPKINSVILLE
 KY.



Scale of Feet.
 0 50 100 150

Library of Congress

