

In 5 Days return to
Young Men's Christian Association
143 FOURTH STREET
MILWAUKEE, WISCONSIN

RHB

MILWAUKEE, WIS.
JAN 19
9:30 PM
1912



Miss Beulah M. Bowden,
Blanchardville,
Wis.

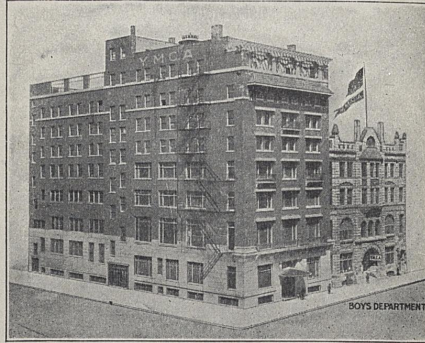
The Young Men's Christian Association

Officers

WM. M. POST, PRESIDENT
DR. E. W. KELLOGG, 1ST VICE-PRESIDENT
A. E. MIELENZ, 2ND VICE-PRESIDENT
W. H. BENDER, RECORDING SECRETARY
EWALD HAASE, TREASURER

Directors

W. W. WALLIS F. C. COMSTOCK
F. H. LINDSAY L. F. BOWER
W. S. PADDOCK C. F. KECK
CHAS. MCKENNY E. J. HUGHES
S. A. GROBBEN



Executive Officers

C. B. WILLIS, GENERAL SECRETARY
PHILLIP B. WILLIS, ASSISTANT GENERAL SECRETARY
C. S. MINTER, PHYSICAL DIRECTOR
F. C. COGGESHALL, BOYS' SECRETARY
A. O. BROCK, ASSISTANT SECRETARY
C. A. PASSELL, EDUCATIONAL SECRETARY
T. F. SCHROEDER, ASSISTANT BOYS' SECRETARY
A. H. STEGENGA, OFFICE SECRETARY
R. T. BOWDEN, ASSISTANT OFFICE SECRETARY
ALBERT OLSEN, ASSISTANT PHYSICAL DIRECTOR
R. V. BOGGESE, MEMBERSHIP SECRETARY
R. L. CUSHING, RELIGIOUS WORK SECRETARY
I. G. MAXWELL, ASSISTANT PHYSICAL DIRECTOR

141-149 FOURTH STREET
TELEPHONE GRAND 2386

MILWAUKEE,

Jan. 5, 1912.

Dear Sister:— This letter may reach you I know not when. I wish you a happy school-time!

Have just returned (11 P.M.) from a visit with Bro. August Hardt and wife. Spent seven hours with them at their home.

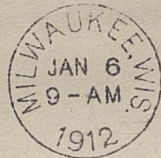
The biting wind has made the weather seem colder than it is. I am prepared for it. Are you?

Last Sunday night my program was different than usual. Played at the Majestic theatre at the watch-meeting for men. Had a full house. Frank Higgins, Sky Pilot of the lumber-camps spoke. It is late. Good Night. Woe next.

Ralph

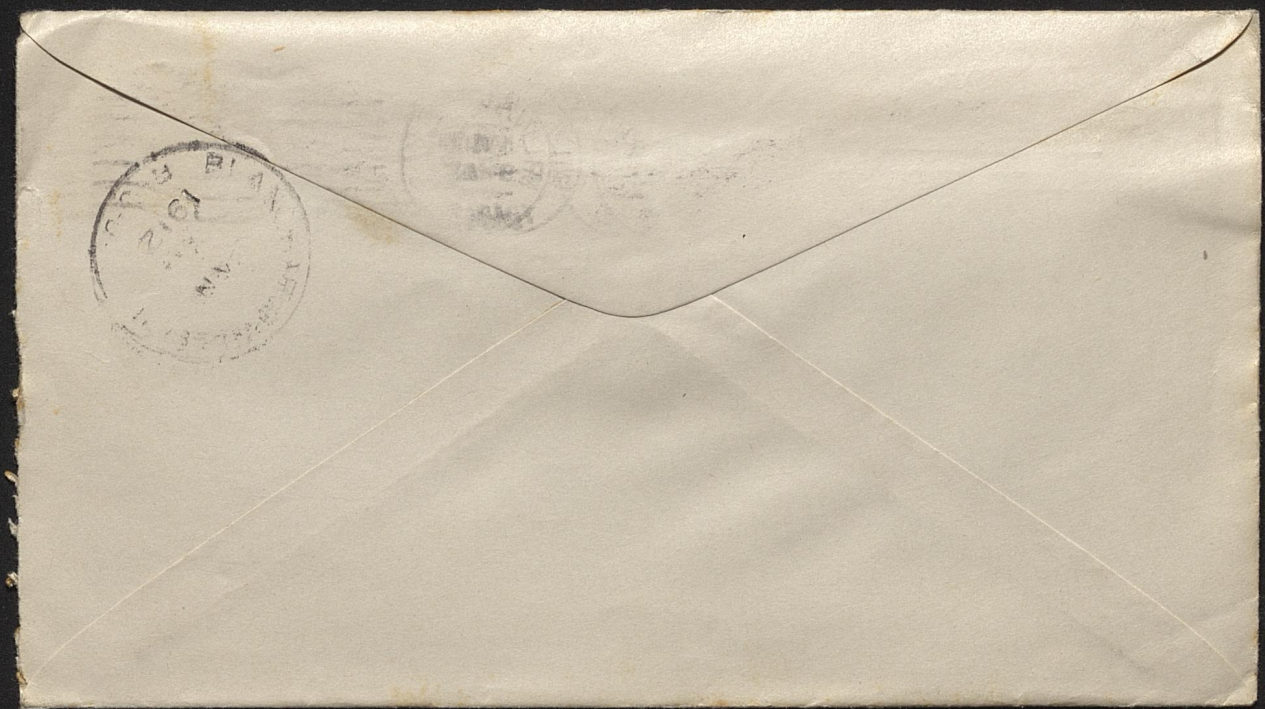
In 5 Days return to

Young Men's Christian Association
143 FOURTH STREET
MILWAUKEE, WISCONSIN



Miss Beulah M. Bowden,
Blanchardville,
Wis.

Please hold if necessary



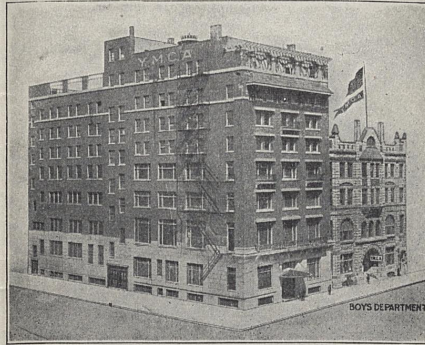
The Young Men's Christian Association

Officers

WM. M. POST, PRESIDENT
 DR. E. W. KELLOGG, 1ST VICE-PRESIDENT
 A. E. MIELENZ, 2ND VICE-PRESIDENT
 W. H. BENDER, RECORDING SECRETARY
 EWALD HAASE, TREASURER

Directors

W. W. WALLIS	F. C. COMSTOCK
F. H. LINDSAY	L. F. BOWER
W. S. PADDOCK	C. F. KECK
CHAS. MCKENNY	E. J. HUGHES
S. A. GROBEN	



Executive Officers

C. B. WILLIS, GENERAL SECRETARY
 PHILLIP B. WILLIS, ASSISTANT GENERAL SECRETARY
 C. S. MINTER, PHYSICAL DIRECTOR
 F. C. COGGESHALL, BOYS' SECRETARY
 A. O. BROCK, ASSISTANT SECRETARY
 C. A. PASSELL, EDUCATIONAL SECRETARY
 T. F. SCHROEDER, ASSISTANT BOYS' SECRETARY
 A. H. STEGENGA, OFFICE SECRETARY
 R. T. BOWDEN, ASSISTANT OFFICE SECRETARY
 ALBERT OLSEN, ASSISTANT PHYSICAL DIRECTOR
 R. V. BOGESS, MEMBERSHIP SECRETARY
 R. L. CUSHING, RELIGIOUS WORK SECRETARY
 I. G. MAXWELL, ASSISTANT PHYSICAL DIRECTOR

141-149 FOURTH STREET
 TELEPHONE GRAND 2386

MILWAUKEE,

1-12-1912,

Dear sister:— You have no idea how greatly I enjoy this weather. I go out wearing a light overcoat, wrist-protectors, ear-protectors, heavy gloves and a muffler. A tenant here who intends to take charge of the Chetek M. E. church this month says it was 44° below when he visited there. The cars, electric and steam, have been greatly delayed and disturbed by the eccentric conduct of the weather.

I am glad to know you will be comfortable this winter. There is nothing like Christian association.

The churches were greatly annoyed by the cold last Sunday, some holding only Sunday School. I kept all regular appointments Sunday. At my Tuesday evening Bible class there were six present beside (R. B.).

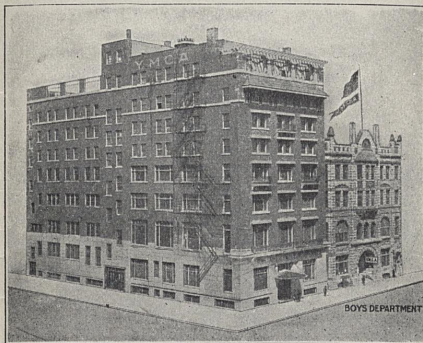
The Young Men's Christian Association

Officers

WM. M. POST, PRESIDENT
DR. E. W. KELLOGG, 1ST VICE-PRESIDENT
A. E. MIELENZ, 2ND VICE-PRESIDENT
W. H. BENDER, RECORDING SECRETARY
EWALD HAASE, TREASURER

Directors

W. W. WALLIS	F. C. COMSTOCK
F. H. LINDSAY	L. F. BOWER
W. S. PADDOCK	C. F. KECK
CHAS. MCKENNY	E. J. HUGHES
S. A. GROBBEN	



Executive Officers

C. B. WILLIS, GENERAL SECRETARY
PHILLIP B. WILLIS, ASSISTANT GENERAL SECRETARY
C. S. MINTER, PHYSICAL DIRECTOR
F. C. COGGESHALL, BOYS' SECRETARY
A. O. BROCK, ASSISTANT SECRETARY
C. A. PASSELL, EDUCATIONAL SECRETARY
T. F. SCHROEDER, ASSISTANT BOYS' SECRETARY
A. H. STEGENGA, OFFICE SECRETARY
R. T. BOWDEN, ASSISTANT OFFICE SECRETARY
ALBERT OLSEN, ASSISTANT PHYSICAL DIRECTOR
R. V. BOGCESS, MEMBERSHIP SECRETARY
R. L. CUSHING, RELIGIOUS WORK SECRETARY
I. G. MAXWELL, ASSISTANT PHYSICAL DIRECTOR

141-149 FOURTH STREET
TELEPHONE GRAND 2386

MILWAUKEE.

This week I played at the Crystal Theatre noon meeting, Tuesday; these services are being conducted this and next week under the auspices of the Men and Religion Forward Movement. I played at the Majestic Theatre Dec. 31, at the mass meeting for men held at midnight.

The family seems to be refrigerated. I have yet six communications due me from relatives and more from others.

Your loving brother,

Ralph.

In 5 Days return to

Young Men's Christian Association
143 FOURTH STREET *RFB*
MILWAUKEE, WISCONSIN



Miss Beriah M. Bowden,
Blanchardville,
Wis.

Mail.

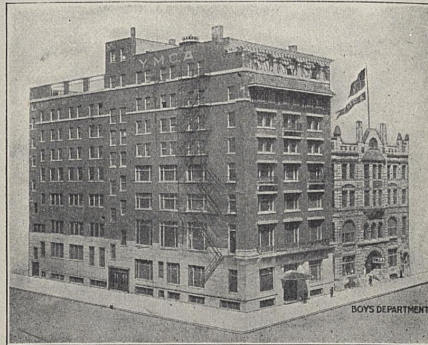
The Young Men's Christian Association

Officers

WM. M. POST, PRESIDENT
DR. E. W. KELLOGG, 1ST VICE-PRESIDENT
A. E. MIELENZ, 2ND VICE-PRESIDENT
W. H. BENDER, RECORDING SECRETARY
EWALD HAASE, TREASURER

Directors

W. W. WALLIS F. C. COMSTOCK
F. H. LINDSAY L. F. BOWER
W. S. PADDOCK C. F. KECK
CHAS. MCKENNY E. J. HUGHES
S. A. GROBEN



Executive Officers

C. B. WILLIS, GENERAL SECRETARY
PHILLIP B. WILLIS, ASSISTANT GENERAL SECRETARY
C. S. MINTER, PHYSICAL DIRECTOR
F. C. COGGESHALL, BOYS' SECRETARY
A. O. BROCK, ASSISTANT SECRETARY
C. A. PASSELL, EDUCATIONAL SECRETARY
T. F. SCHROEDER, ASSISTANT BOYS' SECRETARY
A. H. STEGENGA, OFFICE SECRETARY
R. T. BOWDEN, ASSISTANT OFFICE SECRETARY
ALBERT OLSEN, ASSISTANT PHYSICAL DIRECTOR
R. V. BOGGESS, MEMBERSHIP SECRETARY
R. L. CUSHING, RELIGIOUS WORK SECRETARY
I. G. MAXWELL, ASSISTANT PHYSICAL DIRECTOR

141-149 FOURTH STREET
TELEPHONE GRAND 2386

MILWAUKEE, 1-19-1912.

Dear Sister:- These fellow-teachers of yours will dance themselves into hell before they get done. If the church would get busy, some radical changes would be made in the social life of to-day. I have great confidence in the ability of any determined church to do great things for God even to-day. Personally I would like to enter active work among young people's societies. I hope to engage in considerable both-class work. Education is necessary in order to train people in righteousness. It is evident that the very physical existence of modern humanity is endangered by the wickedness and corruption of the

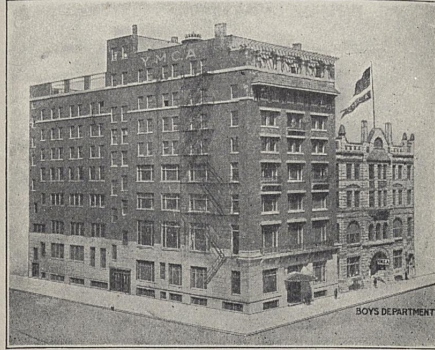
The Young Men's Christian Association

Officers

WM. M. POST, PRESIDENT
DR. E. W. KELLOGG, 1ST VICE-PRESIDENT
A. E. MIELENZ, 2ND VICE-PRESIDENT
W. H. BENDER, RECORDING SECRETARY
EWALD HAASE, TREASURER

Directors

W. W. WALLIS F. C. COMSTOCK
F. H. LINDSAY L. F. BOWER
W. S. PADDOCK C. F. KECK
CHAS. MCKENNY E. J. HUGHES
S. A. GROBEN



Executive Officers

C. B. WILLIS, GENERAL SECRETARY
PHILLIP B. WILLIS, ASSISTANT GENERAL SECRETARY
C. S. MINTER, PHYSICAL DIRECTOR
F. C. COGGESHALL, BOYS' SECRETARY
A. O. BROCK, ASSISTANT SECRETARY
C. A. PASSELL, EDUCATIONAL SECRETARY
T. F. SCHROEDER, ASSISTANT BOYS' SECRETARY
A. H. STEGENGA, OFFICE SECRETARY
R. T. BOWDEN, ASSISTANT OFFICE SECRETARY
ALBERT OLSEN, ASSISTANT PHYSICAL DIRECTOR
R. V. BOGCESS, MEMBERSHIP SECRETARY
R. L. CUSHING, RELIGIOUS WORK SECRETARY
I. G. MAXWELL, ASSISTANT PHYSICAL DIRECTOR

141-149 FOURTH STREET
TELEPHONE GRAND 2386

MILWAUKEE.

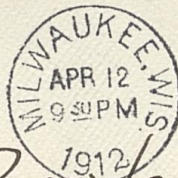
modern ways. I have it from first-hand knowledge that the very basis of human existence in Milwaukee and other cities is quivering in dissolute weakness. These are great days of opportunity for evangelical Christianity.

How about my cold? I have none. This weather suits me.

My best Milw. friend, Mr. John Edwin Foster, left the Ymca for at a 2 months' vacation at his home in Cedar Bluffs, Nebraska this week. He is an electrician.

Your affectionate brother,

Ralph



Miss Beulah M.
Bowden,
Blanchardville,
Wis.



LANCASHIRE
JAN 11
1892

with a water supply
contaminated with the
city sewage. The pro-
position may become
decidedly serious in
the very near future.
I greatly prefer well
water to sewage. Some-
day I hope to get
back to earth again.
City life is without
ideals. The Lord
willeth!

Your true brother,

Ralph

Milw. Y.M.C.A.,
Jan. 26, 1912.

Dear Sister: - I would
like to have a part in
the temperance scrip in
Blanchardville. In Mil-
waukee I have become
accustomed to fight-
ing and am become
quite proficient! There
is nothing quite so abom-
inable as the trade
in alcohol beverages.
You should see
my Sunday morning

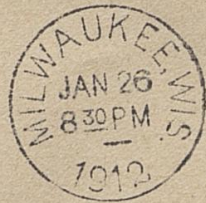
squad of church-going men. We attend my church, game. Last Sunday I had seven men with me.

My Both class enrollment is now thirteen men. I started with five men. We have interesting times.

It would do Ray's blood much good to take some of my exercise along with his own. He must take care of himself. I must acknowledge that I take an interest in Ray which I feel toward no other individual on account of our long association in school and other places. He is rough-grained, but also strong grained.

Of what ages and sexes are your Sunday classes constituted?

Just now Schütz city is troubled.



Miss Beulah M. Bowden,
Blanchardville,
Wis.

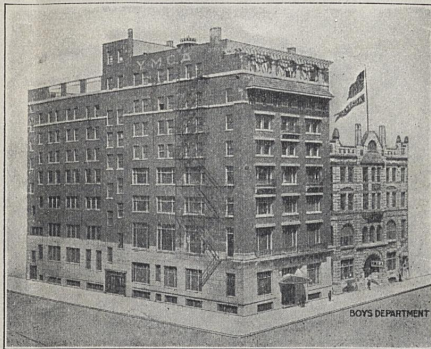
The Young Men's Christian Association

Officers

WM. M. POST, PRESIDENT
DR. E. W. KELLOGG, 1ST VICE-PRESIDENT
A. E. MIELENZ, 2ND VICE-PRESIDENT
W. H. BENDER, RECORDING SECRETARY
EWALD HAASE, TREASURER

Directors

W. W. WALLIS F. C. COMSTOCK
F. H. LINDSAY L. F. BOWER
W. S. PADDOCK C. F. KECK
CHAS. MCKENNY E. J. HUGHES
S. A. GROBBEN



Executive Officers

C. B. WILLIS, GENERAL SECRETARY
PHILLIP B. WILLIS, ASSISTANT GENERAL SECRETARY
C. S. MINTER, PHYSICAL DIRECTOR
F. C. COGGESHALL, BOYS' SECRETARY
A. O. BROCK, ASSISTANT SECRETARY
C. A. PASSELL, EDUCATIONAL SECRETARY
T. F. SCHROEDER, ASSISTANT BOYS' SECRETARY
A. H. STEGENGA, OFFICE SECRETARY
R. T. BOWDEN, ASSISTANT OFFICE SECRETARY
ALBERT OLSEN, ASSISTANT PHYSICAL DIRECTOR
R. V. BOGCESS, MEMBERSHIP SECRETARY
R. L. CUSHING, RELIGIOUS WORK SECRETARY
I. G. MAXWELL, ASSISTANT PHYSICAL DIRECTOR

141-149 FOURTH STREET
TELEPHONE GRAND 2386

MILWAUKEE, 2-1-12.

Dear Sister:—

In accordance with your request I mailed the enclosed missives and so faithfully performed my part of your ingenious scheme of education.

Tuesday night the number of men in my Ruth class became, in respect to mentorship, 15. It pays to learn men and others.

Mother writes that Brother Everett seems to be improving in several respects. Even Ray, she says, remarked the fact.

I wonder if Mills manages to keep busy. Let us hope so. It is his only salvation. Everett will present the identical problem soon and it will have to be solved promptly. He is a Junior in High School now.

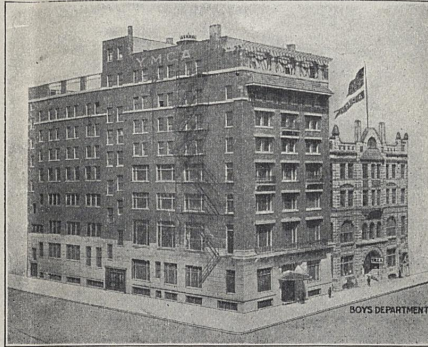
The Young Men's Christian Association

Officers

WM. M. POST, PRESIDENT
DR. E. W. KELLOGG, 1ST VICE-PRESIDENT
A. E. MIELENZ, 2ND VICE-PRESIDENT
W. H. BENDER, RECORDING SECRETARY
EWALD HAASE, TREASURER

Directors

W. W. WALLIS F. C. COMSTOCK
F. H. LINDSAY L. F. BOWER
W. S. PADDOCK C. F. KECK
CHAS. MCKENNY E. J. HUGHES
S. A. GROBBEN



Executive Officers

C. B. WILLIS, GENERAL SECRETARY
PHILLIP B. WILLIS, ASSISTANT GENERAL SECRETARY
C. S. MINTER, PHYSICAL DIRECTOR
F. C. COGGESHALL, BOYS' SECRETARY
A. O. BROCK, ASSISTANT SECRETARY
C. A. PASSELL, EDUCATIONAL SECRETARY
T. F. SCHROEDER, ASSISTANT BOYS' SECRETARY
A. H. STEGENGA, OFFICE SECRETARY
R. T. BOWDEN, ASSISTANT OFFICE SECRETARY
ALBERT OLSEN, ASSISTANT PHYSICAL DIRECTOR
R. V. BOGGESS, MEMBERSHIP SECRETARY
R. L. CUSHING, RELIGIOUS WORK SECRETARY
I. G. MAXWELL, ASSISTANT PHYSICAL DIRECTOR

141-149 FOURTH STREET
TELEPHONE GRAND 2386

MILWAUKEE,

2-1-12
Mamma wants me to make a visit home during the time of vacations of yourself and brother Ray. It looks difficult. My work is tight.

Have you forgotten the occupant of the next presidential chair? Roosevelt seems to be gaining in strength.

The general secretary here has been conducting a warfare against smoking, dancing, and other similar evils. He is an invincible fighter.

Your brother,

R. T. Bowden

In 5 Days return to
Young Men's Christian Association
143 FOURTH STREET *Y.M.C.A.*
MILWAUKEE, WISCONSIN



Miss Beulah M. Bowden,
Blanchardville,
Wis.

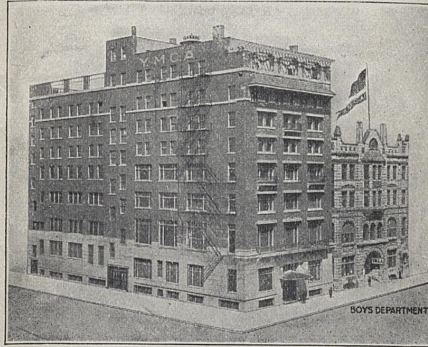
The Young Men's Christian Association

Officers

WM. M. POST, PRESIDENT
DR. E. W. KELLOGG, 1ST VICE-PRESIDENT
A. E. MIELENZ, 2ND VICE-PRESIDENT
W. H. BENDER, RECORDING SECRETARY
EWALD HAASE, TREASURER

Directors

W. W. WALLIS F. C. COMSTOCK
F. H. LINDSAY L. F. BOWER
W. S. PADDOCK C. F. KECK
CHAS. MCKENNY E. J. HUGHES
S. A. GROBBEN



Executive Officers

C. B. WILLIS, GENERAL SECRETARY
PHILLIP B. WILLIS, ASSISTANT GENERAL SECRETARY
C. S. MINTER, PHYSICAL DIRECTOR
F. C. COGGESHALL, BOYS' SECRETARY
A. O. BROCK, ASSISTANT SECRETARY
C. A. PASSELL, EDUCATIONAL SECRETARY
T. F. SCHROEDER, ASSISTANT BOYS' SECRETARY
A. H. STEGENGA, OFFICE SECRETARY
R. T. BOWDEN, ASSISTANT OFFICE SECRETARY
ALBERT OLSEN, ASSISTANT PHYSICAL DIRECTOR
R. V. BOGCESS, MEMBERSHIP SECRETARY
R. L. CUSHING, RELIGIOUS WORK SECRETARY
I. G. MAXWELL, ASSISTANT PHYSICAL DIRECTOR

141-149 FOURTH STREET
TELEPHONE GRAND 2386

MILWAUKEE, 2-8-1912,

Dear Sister:-

Your plan of instruction by mail appeals to me. Some time ago I came to this conclusion with respect to Christianity: the church is bound and commissioned by Jesus Christ to compel every reachable individual to come to a decision concerning Jesus Christ and his salvation. The Christian needs no other authority than the word of Jesus to act aggressively toward the world in religious matters.

You and I have wonderful opportunities and great responsibilities among the youth. My Bible class had the usual attendance last month. God only knows the possibilities of his children in character and service.

My own work brings me into a variety of social functions very one-sided. Personally

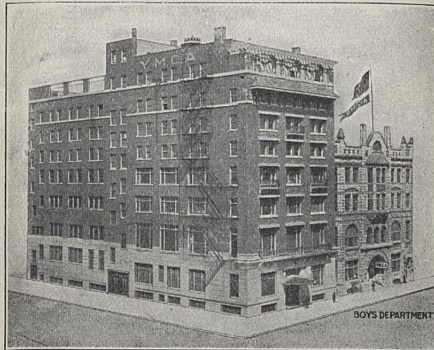
The Young Men's Christian Association

Officers

WM. M. POST, PRESIDENT
DR. E. W. KELLOGG, 1ST VICE-PRESIDENT
A. E. MIELENZ, 2ND VICE-PRESIDENT
W. H. BENDER, RECORDING SECRETARY
EWALD HAASE, TREASURER

Directors

W. W. WALLIS	F. C. COMSTOCK
F. H. LINDSAY	L. F. BOWER
W. S. PADDOCK	C. F. KECK
CHAS. MCKENNY	E. J. HUGHES
S. A. GROBBEN	



Executive Officers

C. B. WILLIS, GENERAL SECRETARY
PHILLIP B. WILLIS, ASSISTANT GENERAL SECRETARY
C. S. MINTER, PHYSICAL DIRECTOR
F. C. COGGESHALL, BOYS' SECRETARY
A. O. BROCK, ASSISTANT SECRETARY
C. A. PASSELL, EDUCATIONAL SECRETARY
T. F. SCHROEDER, ASSISTANT BOYS' SECRETARY
A. H. STEGENGA, OFFICE SECRETARY
R. T. BOWDEN, ASSISTANT OFFICE SECRETARY
ALBERT OLSEN, ASSISTANT PHYSICAL DIRECTOR
R. V. BOGGESS, MEMBERSHIP SECRETARY
R. L. CUSHING, RELIGIOUS WORK SECRETARY
I. G. MAXWELL, ASSISTANT PHYSICAL DIRECTOR

141-149 FOURTH STREET
TELEPHONE GRAND 2386

MILWAUKEE,

I think every Christian evangelist ought, as far as possible, to extend his influence and labor among the mixed social elements which fill life. Social events, unless they are essentially unwholesome, will not corrupt the true belief in the gospel.

This afternoon with a true friend I walked several miles into the country to Wauwatosa in the face of a driving wind, and variously spent the afternoon. I claim few true friends, tho' I have hundreds of nominal friends. With another friend, a member of my Beth class, I attended a naturally reproduced photographic series of stereoptican views at Emmanuel church tonight. It pays to work with usable Christian young men.

verily,

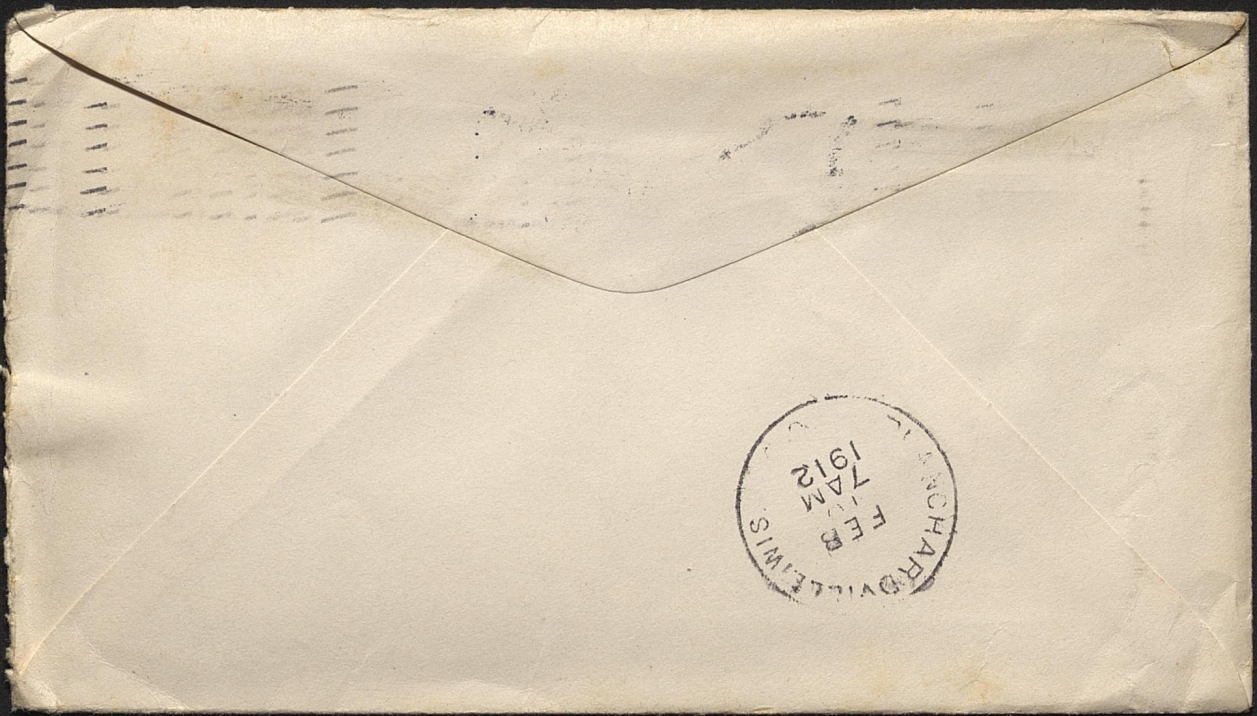
R. True Bowden

In 5 Days return to
Young Men's Christian Association
143 FOURTH STREET *WLB*
MILWAUKEE, WISCONSIN

MILWAUKEE WIS
FEB 9
10 30 AM
1912



Miss Beulah M. Bowden,
Blanchardville,
Wis.



RICHARDVILLE MISSISSIPPI
FEB 7 AM
1912

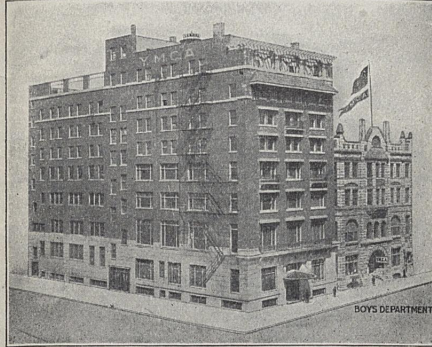
The Young Men's Christian Association

Officers

WM. M. POST, PRESIDENT
DR. E. W. KELLOGG, 1ST VICE-PRESIDENT
A. E. MIELENZ, 2ND VICE-PRESIDENT
W. H. BENDER, RECORDING SECRETARY
EWALD HAASE, TREASURER

Directors

W. W. WALLIS F. C. COMSTOCK
F. H. LINDSAY L. F. BOWER
W. S. PADDOCK C. F. KECK
CHAS. MCKENNY E. J. HUGHES
S. A. GROBBEN



Executive Officers

C. B. WILLIS, GENERAL SECRETARY
PHILLIP B. WILLIS, ASSISTANT GENERAL SECRETARY
C. S. MINTER, PHYSICAL DIRECTOR
F. C. COGGESHALL, BOYS' SECRETARY
A. O. BROCK, ASSISTANT SECRETARY
C. A. PASSELL, EDUCATIONAL SECRETARY
T. F. SCHROEDER, ASSISTANT BOYS' SECRETARY
A. H. STEGENGA, OFFICE SECRETARY
R. T. BOWDEN, ASSISTANT OFFICE SECRETARY
ALBERT OLSEN, ASSISTANT PHYSICAL DIRECTOR
R. V. BOGGESS, MEMBERSHIP SECRETARY
R. L. CUSHING, RELIGIOUS WORK SECRETARY
I. G. MAXWELL, ASSISTANT PHYSICAL DIRECTOR

141-149 FOURTH STREET
TELEPHONE GRAND 2386

MILWAUKEE, 2-16-12.

Dear Sister:-

You do wisely to firmly avoid the practices of the devil in the church. Some tricks and games are positively helpful; others are pernicious and deleterious to the life in Christ.

Some of these weeks nineteen-year-old girls and boys ought to acquire more strength. I am now quite rugged, but I should have had greater physical training in my development and less mental restriction.

The notion that Christ was, in his boyhood, a god-child, is unscriptural. Jesus started as a boy and finished as a man.

I know nothing of vacation except that I shall get one some time next summer. Of late I have indulged in various hikes and visits with three particular friends of mine who are, respectively, enthusiasts in

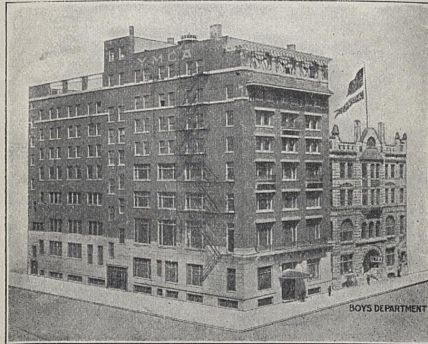
The Young Men's Christian Association

Officers

WM. M. POST, PRESIDENT
 DR. E. W. KELLOGG, 1ST VICE-PRESIDENT
 A. E. MIELENZ, 2ND VICE-PRESIDENT
 W. H. BENDER, RECORDING SECRETARY
 EWALD HAASE, TREASURER

Directors

W. W. WALLIS	F. C. COMSTOCK
F. H. LINDSAY	L. F. BOWER
W. S. PADDOCK	C. F. KECK
CHAS. MCKENNY	E. J. HUGHES
S. A. GROBBEN	



Executive Officers

C. B. WILLIS, GENERAL SECRETARY
 PHILLIP B. WILLIS, ASSISTANT GENERAL SECRETARY
 C. S. MINTER, PHYSICAL DIRECTOR
 F. C. COGGESHALL, BOYS' SECRETARY
 A. O. BROCK, ASSISTANT SECRETARY
 C. A. PASSELL, EDUCATIONAL SECRETARY
 T. F. SCHROEDER, ASSISTANT BOYS' SECRETARY
 A. H. STEGENGA, OFFICE SECRETARY
 R. T. BOWDEN, ASSISTANT OFFICE SECRETARY
 ALBERT OLSEN, ASSISTANT PHYSICAL DIRECTOR
 R. V. BOGGESE, MEMBERSHIP SECRETARY
 R. L. CUSHING, RELIGIOUS WORK SECRETARY
 I. G. MAXWELL, ASSISTANT PHYSICAL DIRECTOR

141-149 FOURTH STREET
 TELEPHONE GRAND 2386

MILWAUKEE.

chase-making, drug-selling, and electric-construction. My most pleasurable moments are spent in this manner. It is thus that I have made friends.

Ray feels considerable responsibility connected with the camp meeting plans. I wonder what God thinks of the A.C. apathy?

Sunday a.m. I shall preach in the N. Milw. Pres. Church; in the evening I lead the Epworth League service at Trinity M.E. Church; next Sunday P.M. I lead the E.E. meeting at Calvary Pres. Church.

My Bible class, which achieved the highest attendance in January, and has been challenged in February, has added three new members since last meeting.

In brotherly love,
 Ralph True.

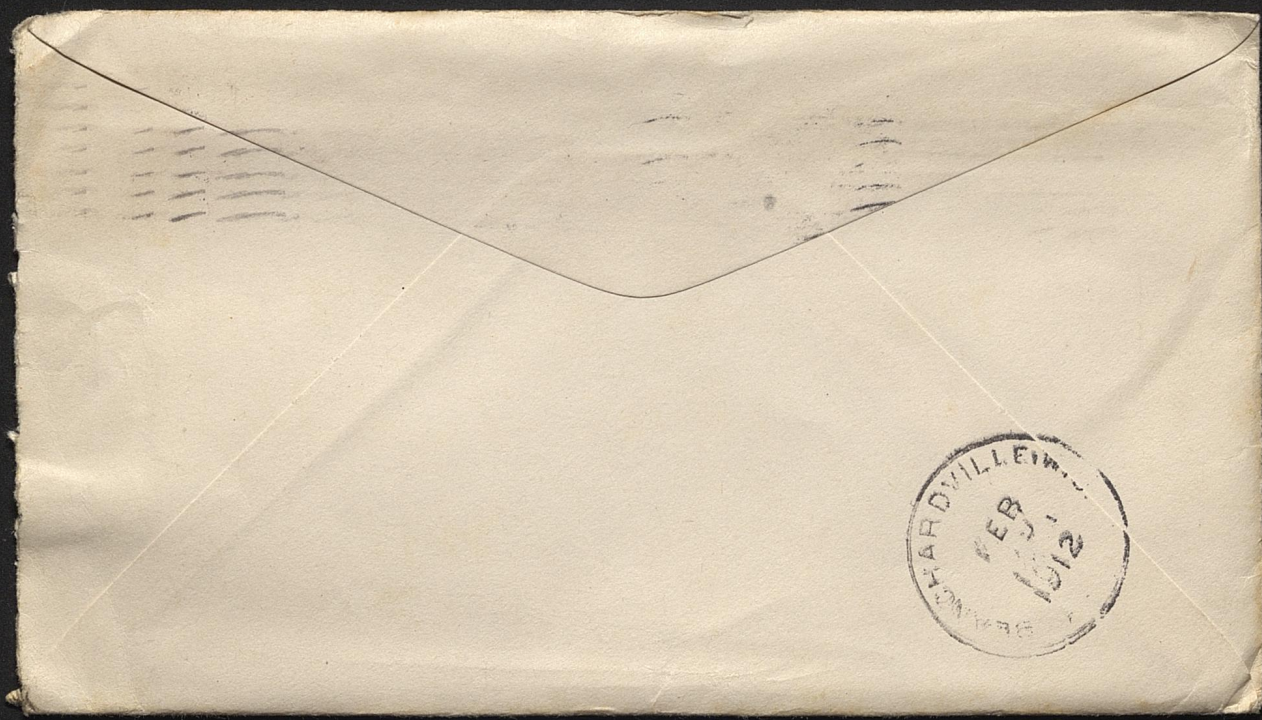
In 5 Days return to
Young Men's Christian Association
143 FOURTH STREET
MILWAUKEE, WISCONSIN

MILWAUKEE WIS
FEB 17
3-PM '12



Miss Beulah M. Bowden
Bancroftville
Wis,





DEARBYRDVILLE INDIAN
FEB
1912

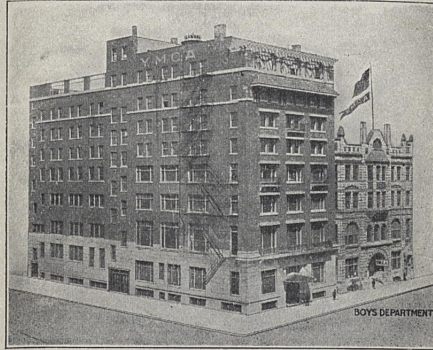
The Young Men's Christian Association

Officers

WM. M. POST, PRESIDENT
DR. E. W. KELLOGG, 1ST VICE-PRESIDENT
A. E. MIELENZ, 2ND VICE-PRESIDENT
W. H. BENDER, RECORDING SECRETARY
EWALD HAASE, TREASURER

Directors

W. W. WALLIS F. C. COMSTOCK
F. H. LINDSAY L. F. BOWER
W. S. PADDOCK C. F. KECK
CHAS. MCKENNY E. J. HUGHES
S. A. GROBBEN



Executive Officers

C. B. WILLIS, GENERAL SECRETARY
PHILLIP B. WILLIS, ASSISTANT GENERAL SECRETARY
C. S. MINTER, PHYSICAL DIRECTOR
F. C. COGGESHALL, BOYS' SECRETARY
A. O. BROCK, ASSISTANT SECRETARY
C. A. PASSELL, EDUCATIONAL SECRETARY
T. F. SCHROEDER, ASSISTANT BOYS' SECRETARY
A. H. STEGENGA, OFFICE SECRETARY
R. T. BOWDEN, ASSISTANT OFFICE SECRETARY
ALBERT OLSEN, ASSISTANT PHYSICAL DIRECTOR
R. V. BOGCESS, MEMBERSHIP SECRETARY
R. L. CUSHING, RELIGIOUS WORK SECRETARY
I. G. MAXWELL, ASSISTANT PHYSICAL DIRECTOR

141-149 FOURTH STREET
TELEPHONE GRAND 2386

MILWAUKEE, 2-23-12

Dear Sister:— my letter was delayed in transmission from this terminal. I presume you have here this received the said communication.

In Milwaukee some churches are conducting respectable dances, which do not, however, realize the 'ideal' dance.

Many churches seem to have found that the speediest way to a man's pocket is his stomach.

Your bed-time is just three hours earlier than is mine.

If the Spirit of God held sway in our churches, they would be different in most ways. I think this is the trouble: we have nearly lost our connection with heaven. O h! that men and women were filled with the life of God as in the past!

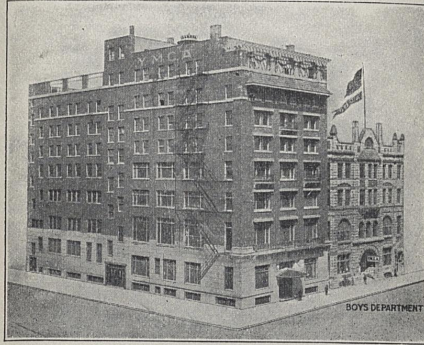
The Young Men's Christian Association

Officers

WM. M. POST, PRESIDENT
 DR. E. W. KELLOGG, 1ST VICE-PRESIDENT
 A. E. MIELENZ, 2ND VICE-PRESIDENT
 W. H. BENDER, RECORDING SECRETARY
 EWALD HAASE, TREASURER

Directors

W. W. WALLIS	F. C. COMSTOCK
F. H. LINDSAY	L. F. BOWER
W. S. PADDOCK	C. F. KECK
CHAS. MCKENNY	E. J. HUGHES
S. A. GROBBEN	



Executive Officers

C. B. WILLIS, GENERAL SECRETARY
 PHILLIP B. WILLIS, ASSISTANT GENERAL SECRETARY
 C. S. MINTER, PHYSICAL DIRECTOR
 F. C. COGGESHALL, BOYS' SECRETARY
 A. O. BROCK, ASSISTANT SECRETARY
 C. A. PASSELL, EDUCATIONAL SECRETARY
 T. F. SCHROEDER, ASSISTANT BOYS' SECRETARY
 A. H. STEGENGA, OFFICE SECRETARY
 R. T. BOWDEN, ASSISTANT OFFICE SECRETARY
 ALBERT OLSEN, ASSISTANT PHYSICAL DIRECTOR
 R. V. BOGESS, MEMBERSHIP SECRETARY
 R. L. CUSHING, RELIGIOUS WORK SECRETARY
 I. G. MAXWELL, ASSISTANT PHYSICAL DIRECTOR

141-149 FOURTH STREET
 TELEPHONE GRAND 2386

MILWAUKEE, 2-23-12

I have walked all over town in the last two weeks with several choice friends.

Ray writes of his busy life. I am pleased to hear it. No word comes from Loyol.

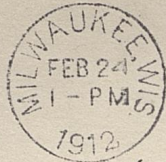
Sunday a.m. I preached in the No. Mt. Pres. church on 'Faction'. Sunday evening I led the Ep. League service at Bay View in the Trinity M.E. church.

I am conducting a tremendous Bible study campaign. Have enrolled my 23rd. member. Only one of these men has proven traitor to the class. Will let you know the results later.

Have to lead the L.E. meeting at Calvary Pres. church Sunday evening.

Your faithful brother,
 Ralph True.

In 5 Days return to
Young Men's Christian Association
143 FOURTH STREET
MILWAUKEE, WISCONSIN



Miss Beulah M. Bowden
Blanchardville,
Wis.

ymca. mil.,

3-1-12.

Dear Sister: - You and I have similar Bible Class Interests. Tuesday night the attendance at my class was twenty men. My total enrollment is now 29. A number of new joiners are pledged already for next week. Already we ^{have} overwhelmingly defeated the other classes this month, ^{but} I have

virtually another challenge from one, and I intend to win my point again most effectually. Our sessions have become most interesting.

Have been having considerable dental work performed on my teeth also.

Assuredly we would have no scarcity of conversational material could we visit at this time. I hope to have a visit from Ray this month early.

Mother repeatedly and faithfully reports all mortal issues about home weekly. The Greenwood Cemetery must now be a live place.

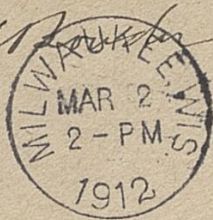
My rural excursions and urban trips with close friends continue incessantly.

Your brother

Ralph True.

ymca, Milwaukee,

~~221 Franklin~~



Miss Beulah M. Bowden,

Blanchardville,

Wis.

100

times seems lonesome.
I have not seen Everett since Jan. 2, 1911.

My chum, John Irwin Foster, returns from Nebraska this month. I assume you three will be warm times this summer. We are the greatest hiking team in this hemisphere.

With love,
your brother,
Ralph True.

Y.M.C.A.,

3-8-1912.

Dear Sister: - Sunday morning I preached in the West Altis Baptist church and afterwards had dinner at the Altis Chalmers Club. It was a pleasant occasion.

The foundation of the whole of real life is friendship. Christianity without friendship would be a vacuum. Personally, there are few whom I

care to consider friends
in any very intimate
way.

You seem to be
addicted to the exam-
ination habit in Blau-
chardville.

If our churches would
get the spirit of ewange-
lism, special revival
meetings would not be
considered much. Of course
I realize how dead our
churches are.

My Tuesday night
attendance was not as
large this week on

account of the absence
of the city section. Hence
a continued labor will
be necessary.

It takes study usu-
ally to defeat even the
devil and his questions.

Sabbatarianism is no
new thing now.

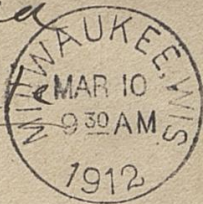
I intend to start
my Sunday morning
project again this
Sunday.

Ray will undoubtedly
by visit me soon. I
too wish you could also
be here. Milwaukee at

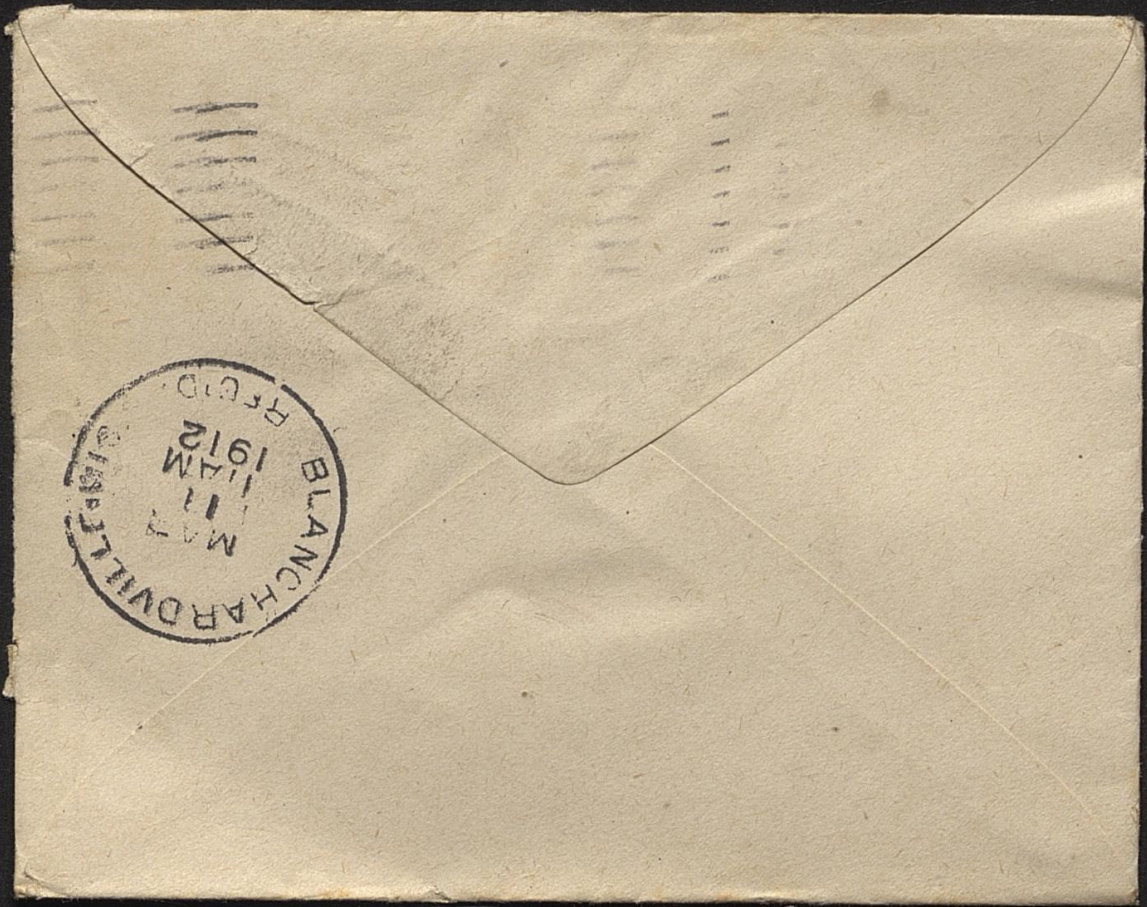
*ymca
Milwaukee*

POSTED

R. T. B. *L*



*Miss Beulah M. Boudin,
Blanchardville,
Wis.*



Ymca,

3-15-12.

Dear Sister:-

I like the school
music idea.

Sunday A. M. I
lead the jail service
for Pilgrim Cong. church.
Last Sunday evening
I spoke for ten min-
utes in Labor Evangel-
ical church on, "Evangelism".

Ray is a rock.
His visit here was a
genuine pleasure to

me. It will be re-
membered in several ways.
We had several confer-
ences on some matters.
In my opinion Ray
is the most integral
character among the
young men of Wisconsin
as far as I know them.

Was surprised to
hear from Everett this
week. He is evidently
changing variously.

Was out on a
long and variegated
hike this evening with
a close personal friend.

We are becoming post-mes-
tous in the hiking art.
Mother will cease
to practice the wary
habit if I chide her a
little more, I think.

Wm. seems to be
having considerable trou-
ble with living quar-
ters.

I have an opportu-
nity to learn Spanish
free of charge if I
will promise to take
up missionary work
in the Philippines.
Your true brother,
Ralph.

ymca,
Milw!



Miss Beulah Brown,
Blanchardville,
Wis.

100

Ymca., Mil.
3-22-12

Dear Sister:-

Ray's visit here was most helpful to me.

Catholicism, alcoholism, vice, and greed control this people. We need to wake up, and fight for God.

This is current expense campaign week in the Ymca., therefore there are no vacations this week.

My time is very limited. In a recent tilt with the general secretary I came out on top.

to the humiliation of my
boss. He apologized to
me and treated the
office crowd with oranges.

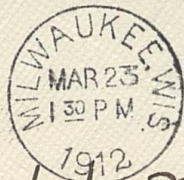
I have orchestral prac-
tice from 10⁰⁰ to 11⁰⁰ each
evening. The worthy instru-
tor and myself have an
orchestral duet.

My daily program
now includes morning
mentuship work. It keeps
me out doors. It may be
a step toward a better
position. I am working hard.

Do you not wish
that the gospel of the
kingdom were being

preached and taught as
it ought in this country.
God will not forsake
his truth. It burdens
my heart to see the
lack of distinct Christian
faith concerning the
future.

Your loving brother,
Ralph Luce.



Miss Beulah M. Bowden,
Blanchardville,
Wis.

100



ymca.,
4-5-12.

Dear Sister: -

Certainly I am anxious that the babies should have good color and health. I am starting a family campaign of health. Be careful of your own health, sister. You know our family is composed of individuals who need development and attention physically. Strengthen yourself in every possible way. I am concerned for those whom I love. This evening I spent and hour wrestling and tugging with six other men on this floor. My blood is surging at a red rate!

Wm. has got to watch
and invigorate his health.
I shall insist on it. It
is a matter of divine duty.
The same is true of the
rest of us. I shall tackle
the whole family on this.

How is Wm's wife physically?
Is she strong? If nobody else
will undertake to arrange
the family before the loss of
health, I surely will. Wm.
has got to get out of his
critical condition. There must
be no surrender to evil.

Blanchardville seems to
have many revivals.
Keep the evangelistic spirit
permanently. God's work
demands it.

It would overjoy me
to see the family entire.
But I am convinced
that the world crisis is
at hand. Paganism, Roman-
ism, and Mohammedan-
ism, as evil spirits are
going into all the earth;
the gospel is also. May we
pressure in love into the
coming of Jesus. Oh! to see
him, our Lord! We need
to be busy, but we must
keep well in Him!

In love,
your true brother,
Ralph.

Mil. Y.M.C.A.
4-5-12.

MILWAUKEE, WIS.
APR 6
9 30 AM '12

2



Miss Beulah M. Borden,
Blanchardville,
Wis.

100



Y.M.C.A.
4-12-12

Dear Sister:—

Wish I could see
my nephews!

Have written Wm.
a letter on religious
conduct in its relation
to hygiene and physical
life. It ought to awaken
him. You better preserve
your health too, and should
have something else to
write to you. We must
be strong—all!

Sunday morning five
men on this floor, inclu-
ding myself, have agreed

to meet on this floor
in my room for the
purpose of organizing a
prayer group or evangelism
band the object of which
shall be the evangelization
of every man in this building
of ours. This is definite. We
assemble at 8.30 a.m. for
a half-hour session. Other
things will develop later.

My work remains va-
rious and engaging. Have
many other duties outside of
my regular engagements,
i.e. regular duty. Unless
I am fired for being in-

dependent, I shall have con-
siderable to do this sum-
mer. Oh! that the work
of spreading the message
of a coming Christ might
be advanced!

A culmination of earthly
affairs is imminent. Paganism,
Jaganism, and Mohammedan-
ism are pitted against
God. It cannot long en-
dure. May God keep us
all.

Truly,

R. I. Bondy,
your brother.

Ymca.
4-20-12.

Dear Sister: -

Yours at hand. I am of the opinion that nothing can ultimately save us from the liquor business except the God of heaven. Romanism is the foundation of alcoholism. Vice flourishes on drink, and greed is responsible for all. Thebarism, Monism, and militarism are linked with the greed for gold. The whole problem is one of Christian citizenship, pure and simple.

My swift letter of last week drew fire from Wm. He will be fully awake before I get done with him.

My prayer-group project, started in my room last Sunday A.M. will continue from week to week.

Mother told me you expected to stay another year. Wish I were able to visit you.

Snow always melts immediately in Milwaukee.

Hope you find a Christian teacher for company next

year. I have learned to test chums, and have many.

Have been quite busy lately performing trickery among select friends on this floor. Wish I could get located in a rural district.

Earth's grand climax approaches. May God help us. Wish our people would get busy.

Verily,
your loving brother,

Ralph.

ymca
mil.

MILWAUKEE, WIS.
APR 20
7 - P.M.
1912



Miss Beulah M. Bowden,
Blanchardville,
Wis.



The Young Men's
Christian Association

Milwaukee, 4-27-12.

Dear Sister:- By force of absolute circumstances
this letter is written ^{late} last night with several
others I attended a rural evangelistic meeting and
saw one of my Bible class members gloriously con-
verted. We walked 6 miles back home.

That picture of the ladies arrived. It is
priceless!

Do not overcook. To do so is sin. Preserve
and train your physique.

Milwaukee doesn't know what snow is.

The prayer-group has a slightly changed
personnel tomorrow morning at 8:30 a.m.

The Young Men's
Christian Association

Milwaukee.

You have sent me no views from Blau-
chardville, although Ray has sent me several.

It appears that many of the Titaville crew
were drunk at the time of the disaster. Ice
floes prevented earlier rescue by other vessels.
God still lives.

Have started a continued Bible study class
in the life of Peter.

Am giving it over to Wm. Write him
yourself. Wish I had more time.
Truly your brother,
Ralph Lane.

In 5 Days return to

Young Men's Christian Association

143 FOURTH STREET

MILWAUKEE, WISCONSIN



Miss Bertha M. Bowden,
Blanchardville,
Wis.

Y.M.C.A. Mil.
May 5, 1912.

Dear Sister:-

A dozen special projects outside of my regular work have so thoroughly engaged my time that my letter is delayed two days. Some day I will tell you about our various enterprises.

I wish you could have gratified your desire for a Christian companion. You can not understand the value of Christian associates to me here.

There is no better remedy for the downgrade tendency than the gripping power and influence of Christian interest and companionship. My own

recent experience has found that patient love is fruitful in salvation. We are bound to present Christ and his power to weak people and strong.

Evidences are increasing that earth is nearing her culmination. May God keep us in his truth.

Since coming here I have become acquainted with a number of young people's societies. Have some playing and speaking appointments. Went to two society sessions this evening.

I hope to see you at camp, if not before, which will be hardly possible. It

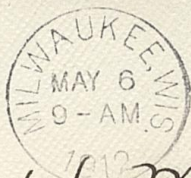
hunts me to think that our work is so ill attended. With God's help I hope to attack some problems soon and assist in their solution. This is a day when God's people ought to think. The message of the coming Christ ought to be spread. We ought to watch and pray.

Have been filling a full program. I hope you enjoy your work. We must be true in these last days.

Truly,

R. H. Bowden
your brother.

Ymca.
Mil.



Miss Beulah May Bowden,
Blanchardville,
Wis.

The Young Men's
Christian Association

Milwaukee, 5-12-12.

Dear Sister:- I am grateful for the post-card souvenir of your school. The Romanists hate the public schools, for they stand for free speech and thought.

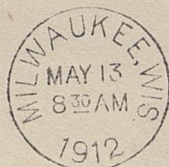
To get into the country would please me ecstasically. Smoke and dust are poor materials for good lungs. Fortunately my personal habits of training and sleep insure me a constantly good physique.

The Young Men's
Christian Association

Hope to get well ^{Milwaukee.} mixed up with some
little children during vacation. It may
help me to stay young. I must remember
always the little Harris boy with
whom I became acquainted last sum-
mer.

Have never read the "Great Destroyer".
Have fulfilled a score of religious work
engagements to-day. Keeps me busy,
Verily,
Ralph, your brother.

In 5 Days return to
Young Men's Christian Association
143 FOURTH STREET
MILWAUKEE, WISCONSIN



Miss Beulah M. Bowden,
Blanchardville,
Wis.

The Young Men's Christian Association

Officers

WM. M. POST, PRESIDENT
L. R. E. W. KELLOGG, 1ST VICE-PRESIDENT
A. E. MIELENZ, 2ND VICE-PRESIDENT
W. H. BENDER, RECORDING SECRETARY
EWALD HAASE, TREASURER

Directors

W. W. WALLIS F. C. COMSTOCK
F. H. LINDSAY L. F. BOWER
W. S. PADDOCK C. F. KECK
CHAS. MCKENNY E. J. HUGHES
S. A. GROBBEN



Executive Officers

C. B. WILLIS, GENERAL SECRETARY
PHILLIP B. WILLIS, ASSISTANT GENERAL SECRETARY
C. S. MINTER, PHYSICAL DIRECTOR
F. C. COGGESHALL, BOYS SECRETARY
A. O. BROCK, ASSISTANT SECRETARY
C. A. PASSELL, EDUCATIONAL SECRETARY
T. F. SCHROEDER, ASSISTANT BOYS SECRETARY
A. H. STEGENGA, OFFICE SECRETARY
R. T. BOWDEN, ASSISTANT OFFICE SECRETARY
ALBERT OLSEN, ASSISTANT PHYSICAL DIRECTOR
R. V. BOGESS, MEMBERSHIP SECRETARY
R. L. CUSHING, RELIGIOUS WORK SECRETARY
I. G. MAXWELL, ASSISTANT PHYSICAL DIRECTOR

141-149 FOURTH STREET
TELEPHONE GRAND 2386

MILWAUKEE, 5-19-12,

Dear Sister:- Your account of Mrs. Rice has
proven to me decidedly instructive. The spirit
of evangelism is the spirit of Christ. With
Mr. Slater, an intelligent active Christian
here, I am endeavoring to compel young
men to choose between the devil or the
devilment. Shall have many interesting
things to say to you this summer.
I little observe the Free Press. It is, on
the whole, a contemptible paper.

The social element in Christian work
is a most fitting and useful feature. I
use it mouth in and mouth out.

Milwaukee preachers are, many of them,
most faithful in exposing evil practices.
I believe in directors in Christian language.
The amusement craze has always proven
ruinous to Christian living.

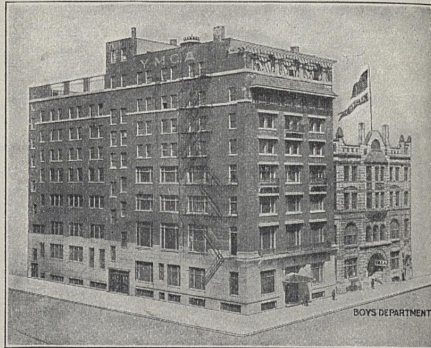
The Young Men's Christian Association

Officers

WM. M. POST, PRESIDENT
 DR. E. W. KELLOGG, 1ST VICE-PRESIDENT
 A. E. MIELENZ, 2ND VICE-PRESIDENT
 W. H. BENDER, RECORDING SECRETARY
 EWALD HAASE, TREASURER

Directors

W. W. WALLIS	F. C. COMSTOCK
F. H. LINDSAY	L. F. BOWER
W. S. PADDOCK	C. F. KECK
CHAS. MCKENNY	E. J. HUGHES
	S. A. GROBBEN



Executive Officers

C. B. WILLIS, GENERAL SECRETARY
 PHILLIP B. WILLIS, ASSISTANT GENERAL SECRETARY
 C. S. MINTER, PHYSICAL DIRECTOR
 F. C. COGGESHALL, BOYS' SECRETARY
 A. O. BROCK, ASSISTANT SECRETARY
 C. A. PASSELL, EDUCATIONAL SECRETARY
 T. F. SCHROEDER, ASSISTANT BOYS' SECRETARY
 A. H. STEGENGA, OFFICE SECRETARY
 R. T. BOWDEN, ASSISTANT OFFICE SECRETARY
 ALBERT OLSEN, ASSISTANT PHYSICAL DIRECTOR
 R. V. BOGESS, MEMBERSHIP SECRETARY
 R. L. CUSHING, RELIGIOUS WORK SECRETARY
 I. G. MAXWELL, ASSISTANT PHYSICAL DIRECTOR

141-149 FOURTH STREET
 TELEPHONE GRAND 2386

MILWAUKEE.

There is but one fate suitable for the
 drunk evil - the abyss.

My regular and special programs
 seem to continue to appear with
 unaltered strength and speed. We need
 grace to do the will of God amid
 rushing circumstances. I ask your prayer-
 ful interest. Nothing except the charac-
 ter of Christ is sufficient for his people.

With a number of friends, I am
 perpetuating my hike habits. It does
 me vast good to get out of doors.

World conditions indicate quite
 clearly a near culmination of earthly
 courses. May we be waiting!

Truly in love,

Ralph True.

In 5 Days return to

Young Men's Christian Association
143 FOURTH STREET
MILWAUKEE, WISCONSIN

POSTED
R.T.B.



Miss Beulah M. Bowden,
Blanchardville,
Wis.

200

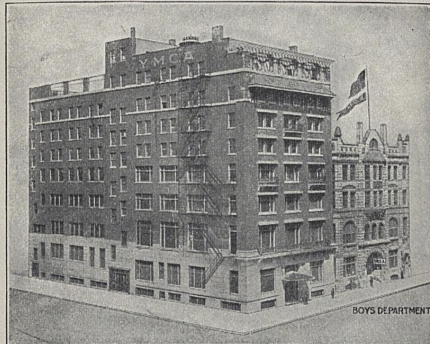
The Young Men's Christian Association

Officers

WM. M. POST, PRESIDENT
L. R. E. W. KELLOGG, 1ST VICE-PRESIDENT
A. E. MIELENZ, 2ND VICE-PRESIDENT
W. H. BENDER, RECORDING SECRETARY
EWALD HAASE, TREASURER

Directors

W. W. WALLIS F. C. COMSTOCK
F. H. LINDSAY L. F. BOWER
W. S. PADDOCK C. F. KECK
CHAS. MCKENNY E. J. HUGHES
S. A. GROBBEN



Executive Officers

C. B. WILLIS, GENERAL SECRETARY
PHILLIP B. WILLIS, ASSISTANT GENERAL SECRETARY
C. S. MINTER, PHYSICAL DIRECTOR
F. C. COGGESHALL, BOYS' SECRETARY
A. O. BROCK, ASSISTANT SECRETARY
C. A. PASSELL, EDUCATIONAL SECRETARY
T. F. SCHROEDER, ASSISTANT BOYS' SECRETARY
A. H. STEGENGA, OFFICE SECRETARY
R. T. BOWDEN, ASSISTANT OFFICE SECRETARY
ALBERT OLSEN, ASSISTANT PHYSICAL DIRECTOR
R. V. BOGGESS, MEMBERSHIP SECRETARY
R. L. CUSHING, RELIGIOUS WORK SECRETARY
I. G. MAXWELL, ASSISTANT PHYSICAL DIRECTOR

141-149 FOURTH STREET
TELEPHONE GRAND 2386

MILWAUKEE, 6-2-12.

Dear Sister:- I hope you will take care of your health while you work so hard. Personally, I can stand about anything now. Surely you must be intensely interested in the outcome of the lives under your spiritual attention. Commencement ought to find every graduate a disciple of Jesus.

I wish I could have visited you in your school. My campaigning period will be broken up this year. My vacation will begin on the 20. th and last two weeks. However, I shall be able to take in the first Sunday also by special arrangement. Do not know where I shall spend the latter part of my vacation.

Friday by electric I went to and returned from Watertown. During the

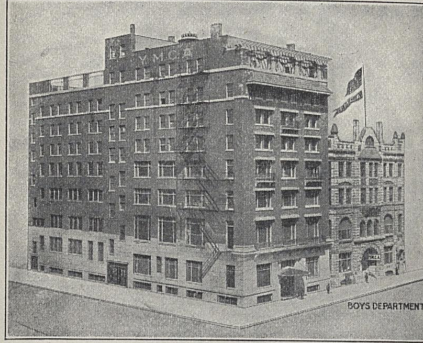
The Young Men's Christian Association

Officers

WM. M. POST, PRESIDENT
GR. E. W. KELLOGG, 1ST VICE-PRESIDENT
A. E. MIELENZ, 2ND VICE-PRESIDENT
W. H. BENDER, RECORDING SECRETARY
EVALD HAASE, TREASURER

Directors

W. W. WALLIS F. C. COMSTOCK
F. H. LINDSAY L. F. BOWER
W. S. PADDOCK C. F. KECK
CHAS. MCKENNY E. J. HUGHES
S. A. GROBBEN



Executive Officers

C. B. WILLIS, GENERAL SECRETARY
PHILLIP B. WILLIS, ASSISTANT GENERAL SECRETARY
C. S. MINTER, PHYSICAL DIRECTOR
F. C. COGGESHALL, BOYS' SECRETARY
A. O. BROCK, ASSISTANT SECRETARY
C. A. PASSELL, EDUCATIONAL SECRETARY
T. F. SCHROEDER, ASSISTANT BOYS' SECRETARY
A. H. STEGENGA, OFFICE SECRETARY
R. T. BOWDEN, ASSISTANT OFFICE SECRETARY
ALBERT OLSEN, ASSISTANT PHYSICAL DIRECTOR
R. V. BOGGESS, MEMBERSHIP SECRETARY
R. L. CUSHING, RELIGIOUS WORK SECRETARY
I. G. MAXWELL, ASSISTANT PHYSICAL DIRECTOR

141-149 FOURTH STREET
TELEPHONE GRAND 2386

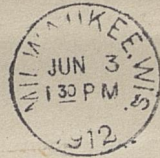
MILWAUKEE.

five hours I was in the city I visited everybody thoroughly and pleasantly, and gave some ~~original~~ original suggestions. Wish you could be here to take some moral walks with me.

Will be able to write more and better next week. Have been very much occupied but will talk of many things this summer.

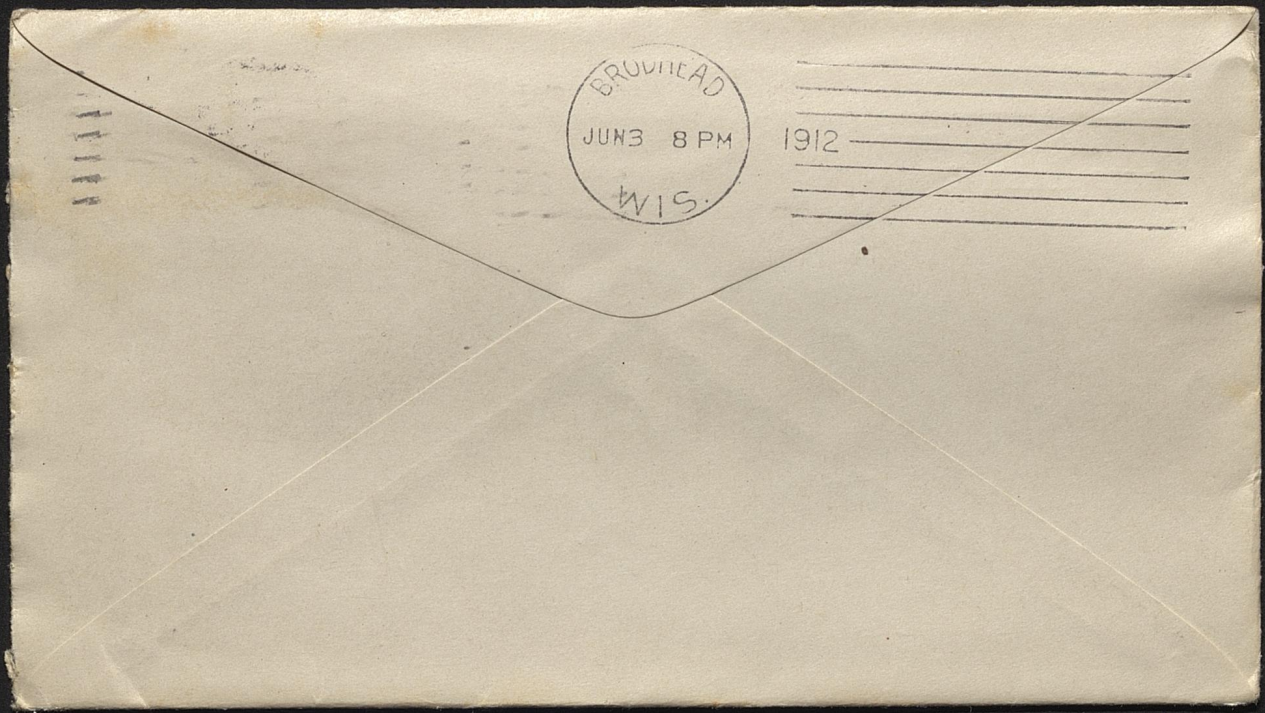
Truly with love,
Ralph

In 5 Days return to
Young Men's Christian Association
143 FOURTH STREET
MILWAUKEE, WISCONSIN



Miss Beulah M. Bowden,
Brookfield,
Wis.

200



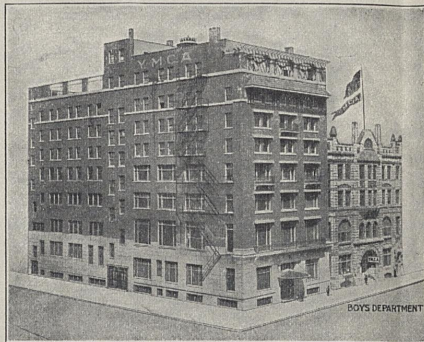
The Young Men's Christian Association

Officers

WM. M. POST, PRESIDENT
 D. R. E. W. KELLOGG, 1ST VICE-PRESIDENT
 A. E. MIELENZ, 2ND VICE-PRESIDENT
 W. H. BENDER, RECORDING SECRETARY
 EWALD HAASE, TREASURER

Directors

W. W. WALLIS	F. C. COMSTOCK
F. H. LINDSAY	L. F. BOWER
W. S. PADDOCK	C. F. KECK
CHAS. MCKENNY	E. J. HUGHES
S. A. GROBBEN	



Executive Officers

C. B. WILLIS, GENERAL SECRETARY
 PHILLIP B. WILLIS, ASSISTANT GENERAL SECRETARY
 C. S. MINTER, PHYSICAL DIRECTOR
 F. C. COGGESHALL, BOYS SECRETARY
 A. O. BROCK, ASSISTANT SECRETARY
 C. A. PASSELL, EDUCATIONAL SECRETARY
 T. F. SCHROEDER, ASSISTANT BOYS SECRETARY
 A. H. STEGENGA, OFFICE SECRETARY
 R. T. BOWDEN, ASSISTANT OFFICE SECRETARY
 ALBERT OLSEN, ASSISTANT PHYSICAL DIRECTOR
 R. V. BOGGESE, MEMBERSHIP SECRETARY
 R. L. CUSHING, RELIGIOUS WORK SECRETARY
 I. G. MAXWELL, ASSISTANT PHYSICAL DIRECTOR

141-149 FOURTH STREET
 TELEPHONE GRAND 2386

MILWAUKEE, 7-28-12

Dear Sister:- your communication was mailed promptly, your postal idea strongly appears to me. Directness of effort pays in the work of evangelism.

Sudden things do happen. Wonder if William has decided his course for next year.

I understood the Baptists at Brookhead had received the last votes.

Equal suffrage I regard as an inevitable result of a pure spirit of Christian citizenship. Romanism opposes it.

This morning in company with a member of my Entourage Troop I went several miles into a rural section and counted 924 people who, in forty minutes, entered a Roman church for 7.30 mass. How's that?

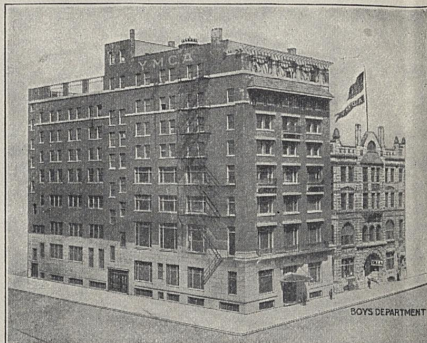
The Young Men's Christian Association

Officers

WM. M. POST, PRESIDENT
DR. E. W. KELLOGG, 1ST VICE-PRESIDENT
A. E. MIELENZ, 2ND VICE-PRESIDENT
W. H. BENDER, RECORDING SECRETARY
EWALD HAASE, TREASURER

Directors

W. W. WALLIS F. C. COMSTOCK
F. H. LINDSAY L. F. BOWER
W. S. PADDOCK C. F. KECK
CHAS. MCKENNY E. J. HUGHES
S. A. GROBBEN



Executive Officers

C. B. WILLIS, GENERAL SECRETARY
PHILLIP B. WILLIS, ASSISTANT GENERAL SECRETARY
C. S. MINTER, PHYSICAL DIRECTOR
F. C. COGGESHALL, BOYS' SECRETARY
A. O. BROCK, ASSISTANT SECRETARY
C. A. PASSELL, EDUCATIONAL SECRETARY
T. F. SCHROEDER, ASSISTANT BOYS' SECRETARY
A. H. STEGENGA, OFFICE SECRETARY
R. T. BOWDEN, ASSISTANT OFFICE SECRETARY
ALBERT OLSEN, ASSISTANT PHYSICAL DIRECTOR
R. V. BOGGESS, MEMBERSHIP SECRETARY
R. L. CUSHING, RELIGIOUS WORK SECRETARY
I. G. MAXWELL, ASSISTANT PHYSICAL DIRECTOR

141-149 FOURTH STREET
TELEPHONE GRAND 2386

MILWAUKEE.

Our 8:15 Sunday a.m. prayer circle is doing good by its intensification of the Christian faith of our leaders among the dormitory young men.

Although I had to work this morning on duty, I sent my church squad to church. Under a supply preacher they took turns going asleep.

My dinner group showed a record attendance to-day.

Went on gospel wagon this P.M. as usual to play the little organ.

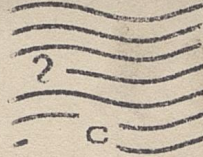
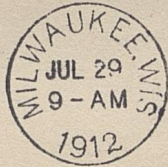
Took three members of my endeavor band with me tonight to Immanuel.

Have had much music practice to-day. In a late squal tonight one man was drowned.

Give my love to Grandma and Aunt Lucy and Everett and Miss Halfhead, etc.
You true brother,
Ralph.

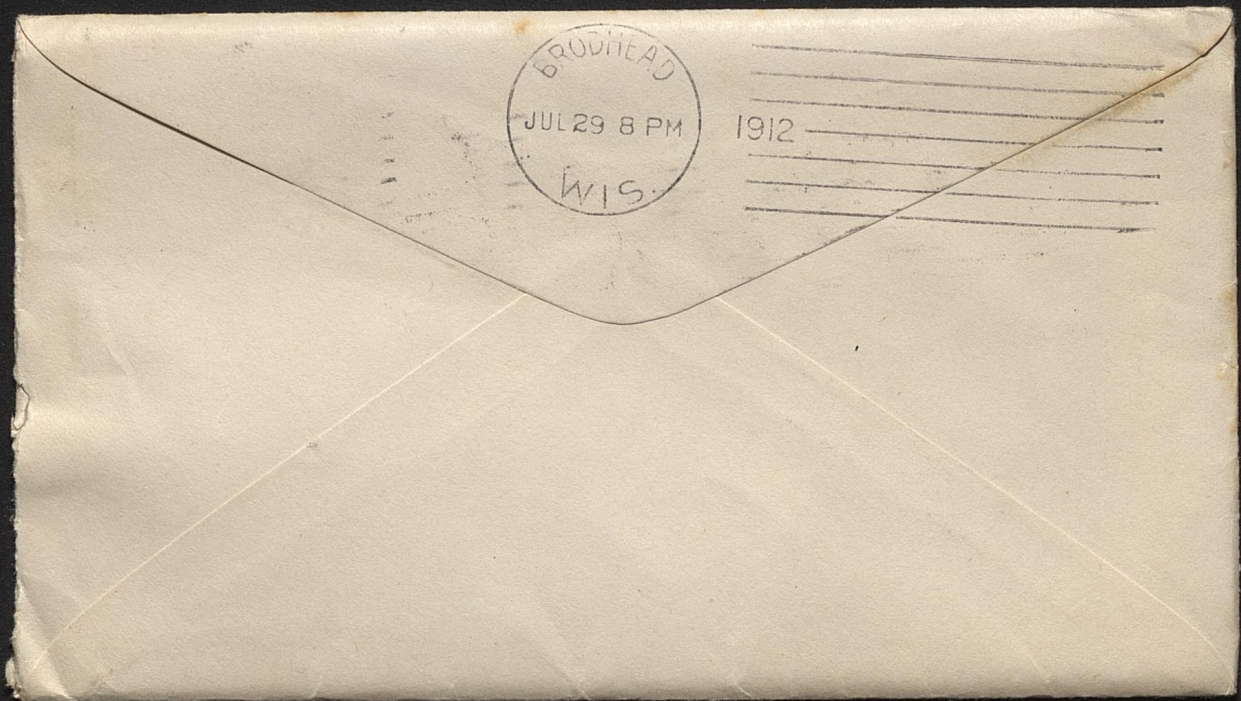
In 5 Days return to

Young Men's Christian Association
R. P. Bowden
148 FOURTH STREET
MILWAUKEE, WISCONSIN



*Miss Beulah M. Bowden,
Brookfield,
Wis.*

200



The Young Men's
Christian Association

Milwaukee, 8-13-12.

Dear Sister:- Tell Ray when next you see him that I am surprised that he permits various girls to embrace him in such a rude manner. Urge him to reserve his affections for more ~~sober~~ subjects.

great things, as regard my interest, are transpiring. My decision remains unchanged. Some things of significance I shall relate when next we converse.

The Young Men's
Christian Association

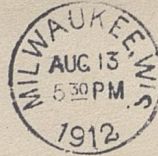
Milwaukee.

Besides much of my regular work, I preached in two Presbyterian churches Sunday, and have other two for next Sunday. I wish you might be with me on some of these delightful trips. I shall never forget last Sunday evening's service.

Remember me cordially to my friends
and joyously to my enemies.
Verily, in love,
R. T. Bowden.

In 5 Days return to

Young Men's Christian Association
R. H. Borden
143 FOURTH STREET
MILWAUKEE, WISCONSIN



Miss Beulah M. Borden,
Bridghead,
Wis.

Forward if advisable

660

BRODHEAD
AUG 14 10 AM
WIS.

1912

