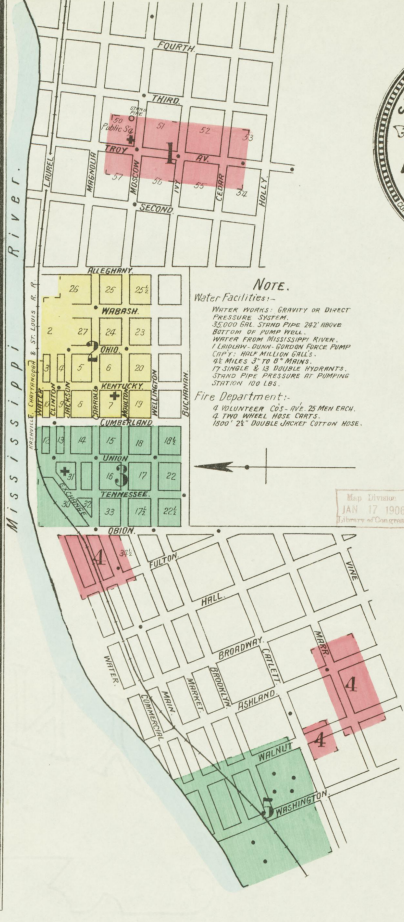




KEY

- ① FIRE WALL SIX ANY ROOF
- ② FIRE WALL IN ANY ROOF
- ③ FIRE WALL IN ANY ROOF
- ④ FRAME PARTITION
- ⑤ OPENING WITH IRON DOOR
- ⑥ STANDARD
- ⑦ IRON DOOR
- ⑧ WINDOWS AND IRON SHUTTERS
- ⑨ WINDOW IRON SHUTTERS
- ⑩ WINDOWS IRON SHUTTERS
- ⑪ STREETS
- ⑫ STABLE
- ⑬ BUILDINGS COLORED YELLOW AND FRAME
- ⑭ RED
- ⑮ BRICK
- ⑯ BRICK
- ⑰ BRICK
- ⑱ BROWN
- ⑲ BRICK
- ⑳ IRON DOOR
- ㉑ SPECIAL
- ㉒ ① INDICATE RELATIVE HEIGHTS.
- ㉓ FIRE SECTION AS SHOWN ON THIS MAP
- ㉔ ALTERNATE STREET NUMBERS ARE ACTUAL
- ㉕ CONSECUTIVE STREET NUMBERS ARE ARBITRARY



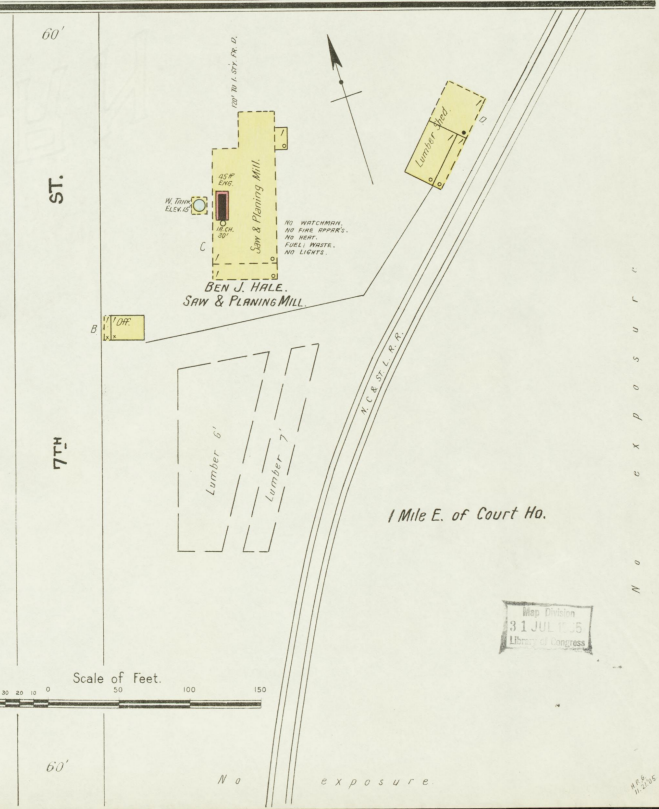
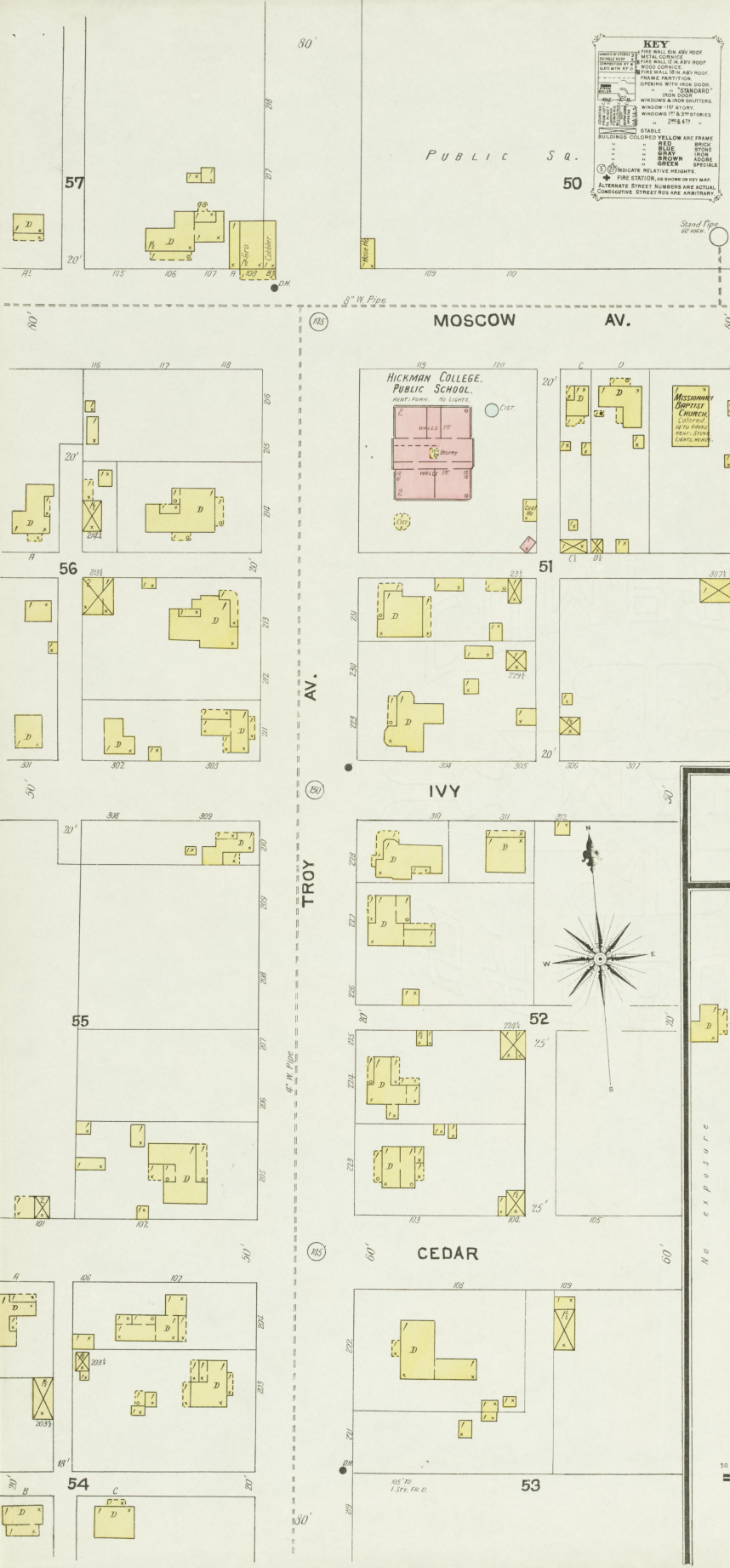
Note.

Water Facilities -
Water Meters - Gravity on Direct
Pressure System.
Electric Meters - 100 and 300
SECTION OF PUMP PUMP.
WATER FROM MISSISSIPPI RIVER.
1. LUMBER - GAIN - GARDEN FORCE PUMP
CAPACITY - 1000 GALLONS PER
MINUTE - 2 1/2 TO 3 1/2 INCH
DIAMETER & 10 HORSE POWER.
STEADY FLOW PRESSURE BY PUMPING
STATION 100 LBS.

Fire Department:
4 HYDRANTS - CO. - 100 25 MIN. EACH.
4 TROOP HORSE, WOOD CHIPS.
1000' 2 1/2" DOUBLE JOINTED COTTON HOSE.

INDEX.

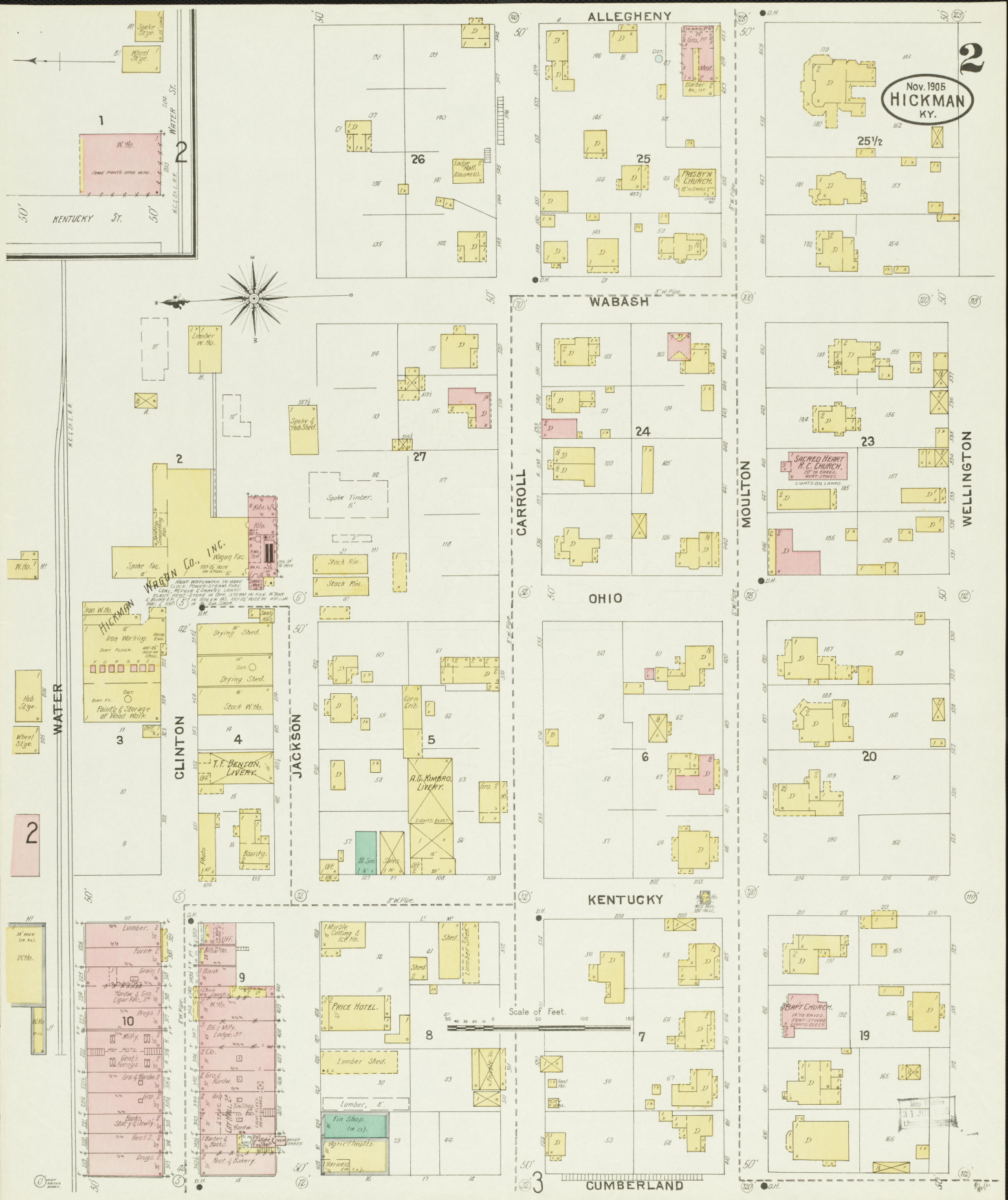
- SPECIALS.**
- Baptist Church, 2
 - Christian Church, 3
 - County Court House and Jail, 3
 - Dodds, J. F. & S. L., Co., Cotton Gin, 4
 - Episcopal Church, 3
 - Paris, A. A., Elevator, 4
 - Hale, E. J., Saw and Planing Mill, 4
 - Hickman College, 1
 - Roller Mills, 2 & 4
 - Wagon Co., 2 & 4
 - Water and Electr. L. Works, 3
 - Laclade Hotel, 3
 - Mengle Box Co., 5
 - Methodist Episcopal Church, 3
 - Missionary Baptist Church, 1
 - N. C. & St. L. R. R. Depot, 3
 - " " Elevator, 5
 - Presbyterian Church, 2
 - Price Hotel, 1
 - Public School, 1
 - Reaves, E. E., Grist Mill, 4
 - Richmond-Bond Co., Cotton Oil Mill, 5
 - Standard Oil Co., 4
 - Sacred Heart Catholic Church, 2
 - Tyler, H. T., Roller Mill, 4



Map Division
31 JUL 1906
Library of Congress

Nov. 1905
HICKMAN
KY.

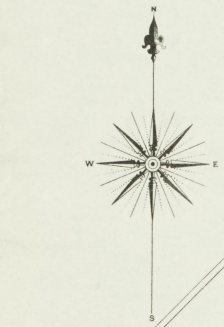
2



WELLINGTON

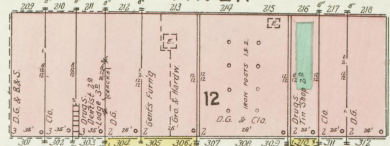
117

112

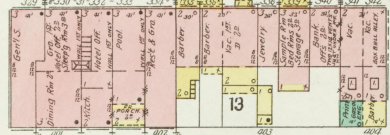


Nov. 1905
HICKMAN
KY.

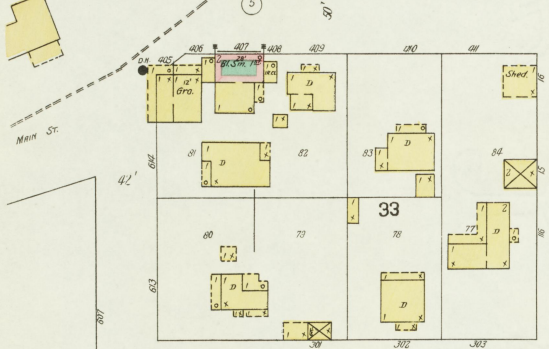
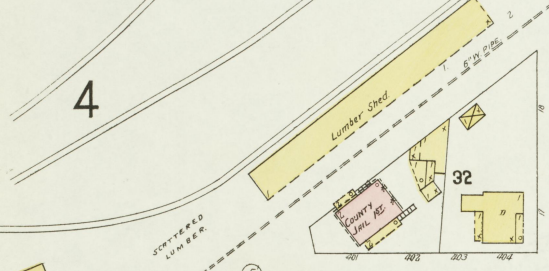
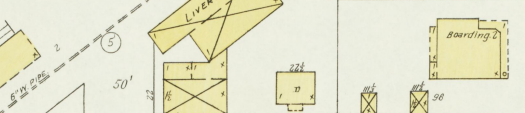
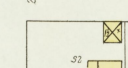
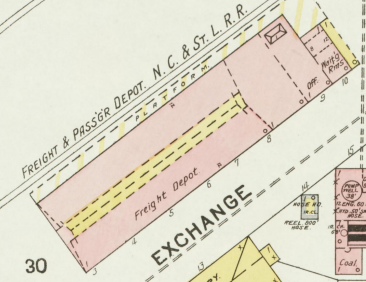
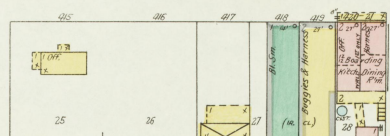
WATER



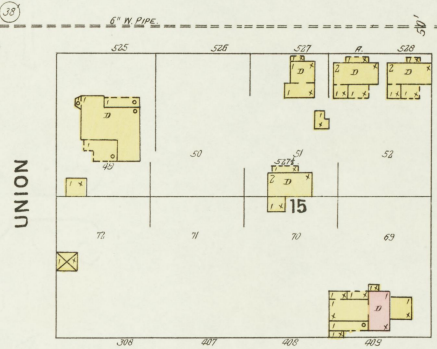
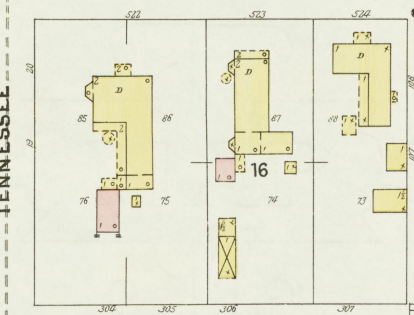
GLINTON



JACKSON



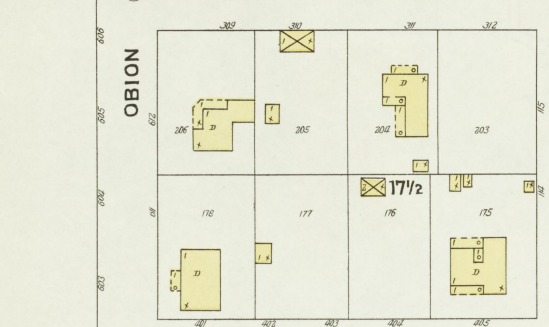
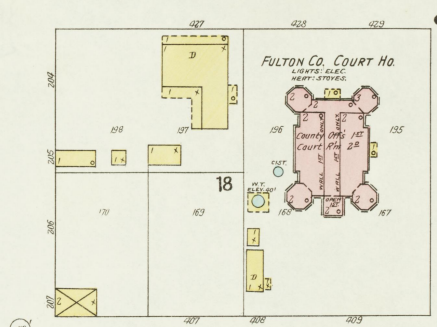
CARROLL



CUMBERLAND

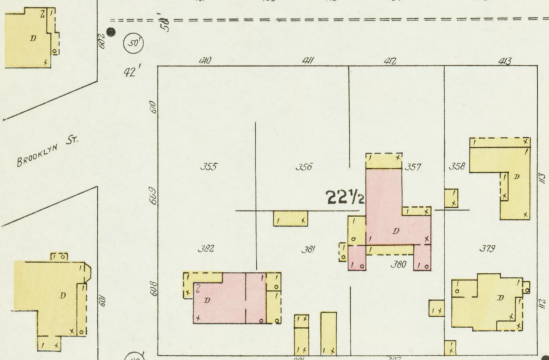
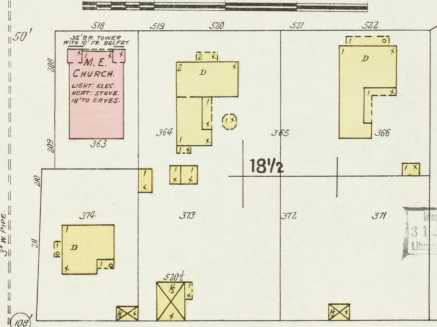
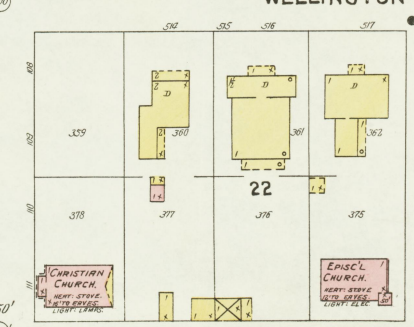
UNION

MOULTON



OBION

WELLINGTON



BUCHANAN

Scale of Feet: 0 50 100 150

Brooklyn St.

Main St.

N.C. & St. L. R.R.

Lumber Shed

Country Mill

Freight & Passenger Depot N.C. & St. L. R.R.

Exchange

Livery

Water Works & Elec. Light Plant

Boarding

Block 12: Lot numbers 201-210

Block 13: Lot numbers 211-220

Block 14: Lot numbers 221-230

Block 30: Lot numbers 291-300

Block 31: Lot numbers 301-310

Block 32: Lot numbers 311-320

Block 33: Lot numbers 321-330

Block 16: Lot numbers 341-350

Block 15: Lot numbers 351-360

Block 17: Lot numbers 361-370

Block 18: Lot numbers 371-380

Block 17 1/2: Lot numbers 381-390

Block 22: Lot numbers 391-400

Block 18 1/2: Lot numbers 401-410

Block 22 1/2: Lot numbers 411-420

50'

50'

50'

50'

50'

50'

50'

50'

50'

50'

50'

50'

50'

50'

50'

50'

50'

50'

50'

50'

50'

50'

3

12

13

14

15

16

17

18

17 1/2

22

18 1/2

22 1/2

3

12

13

14

15

16

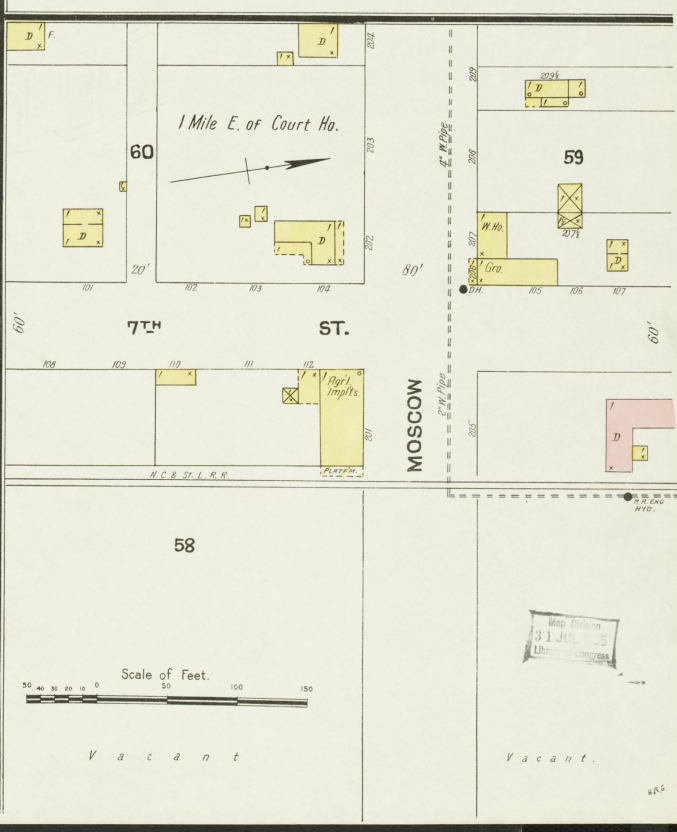
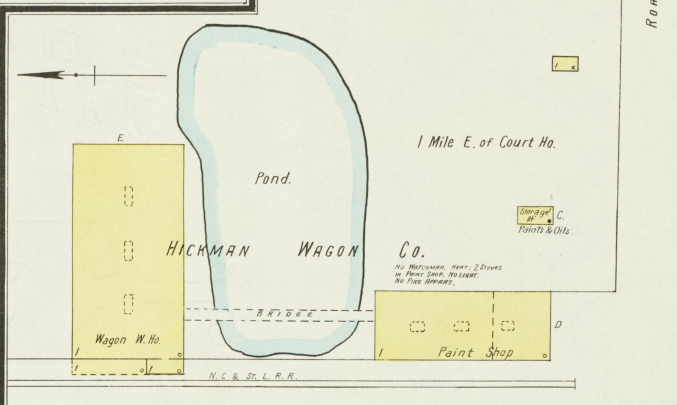
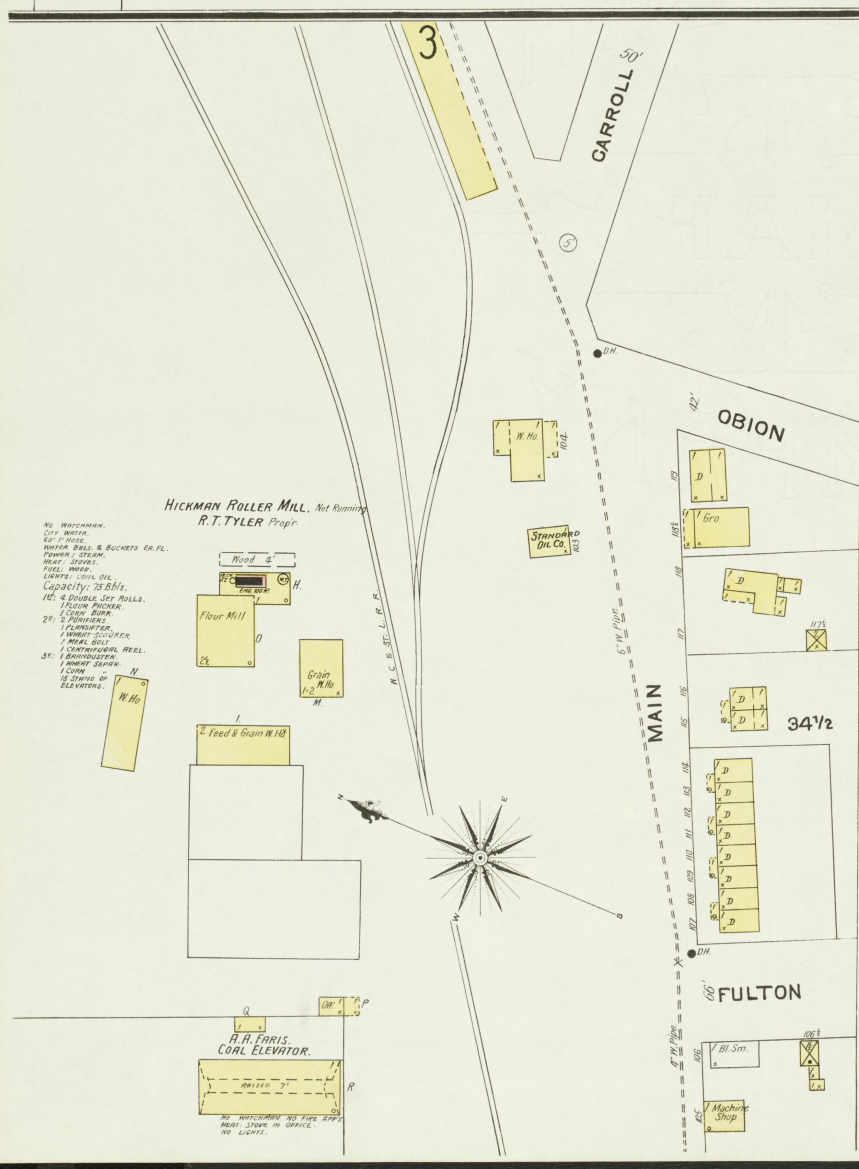
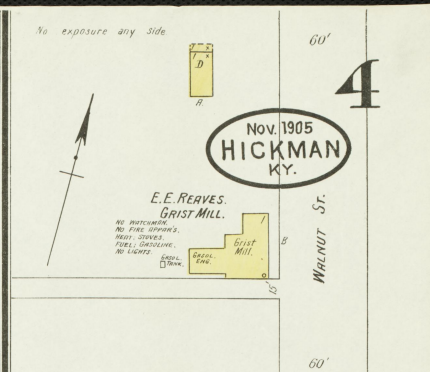
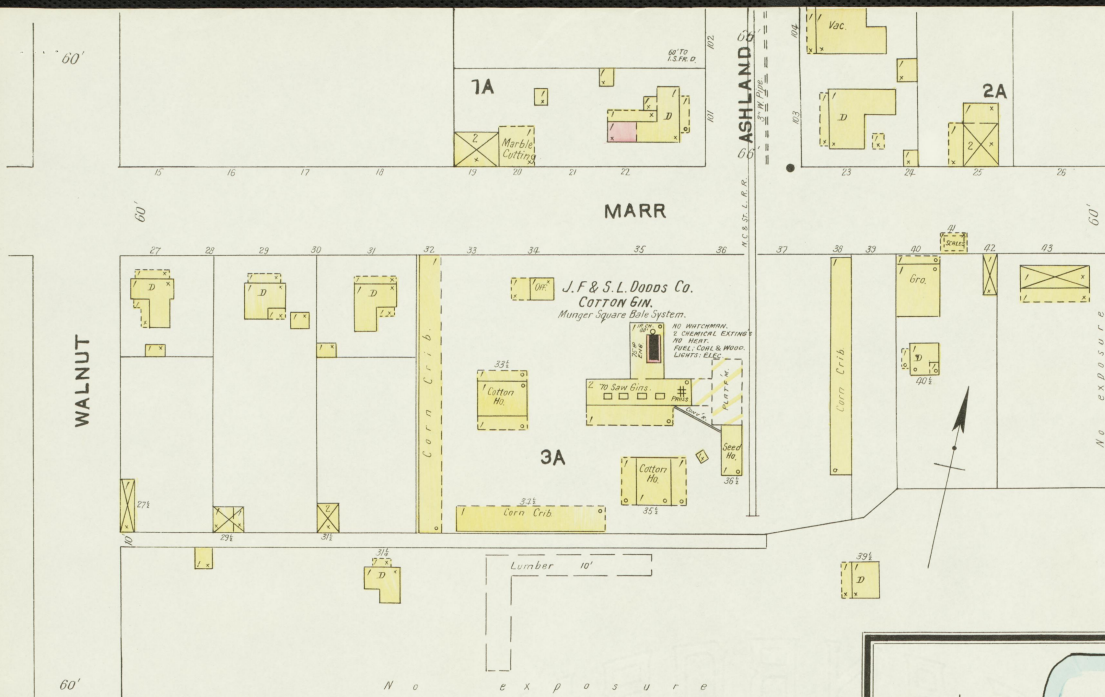
17

18

17 1/2

22

18 1/2



Nov. 1905
HICKMAN
KY.

HICKMAN ROLLER MILL. Not Running
R.T. TYLER Prop.

Scale of Feet.

