

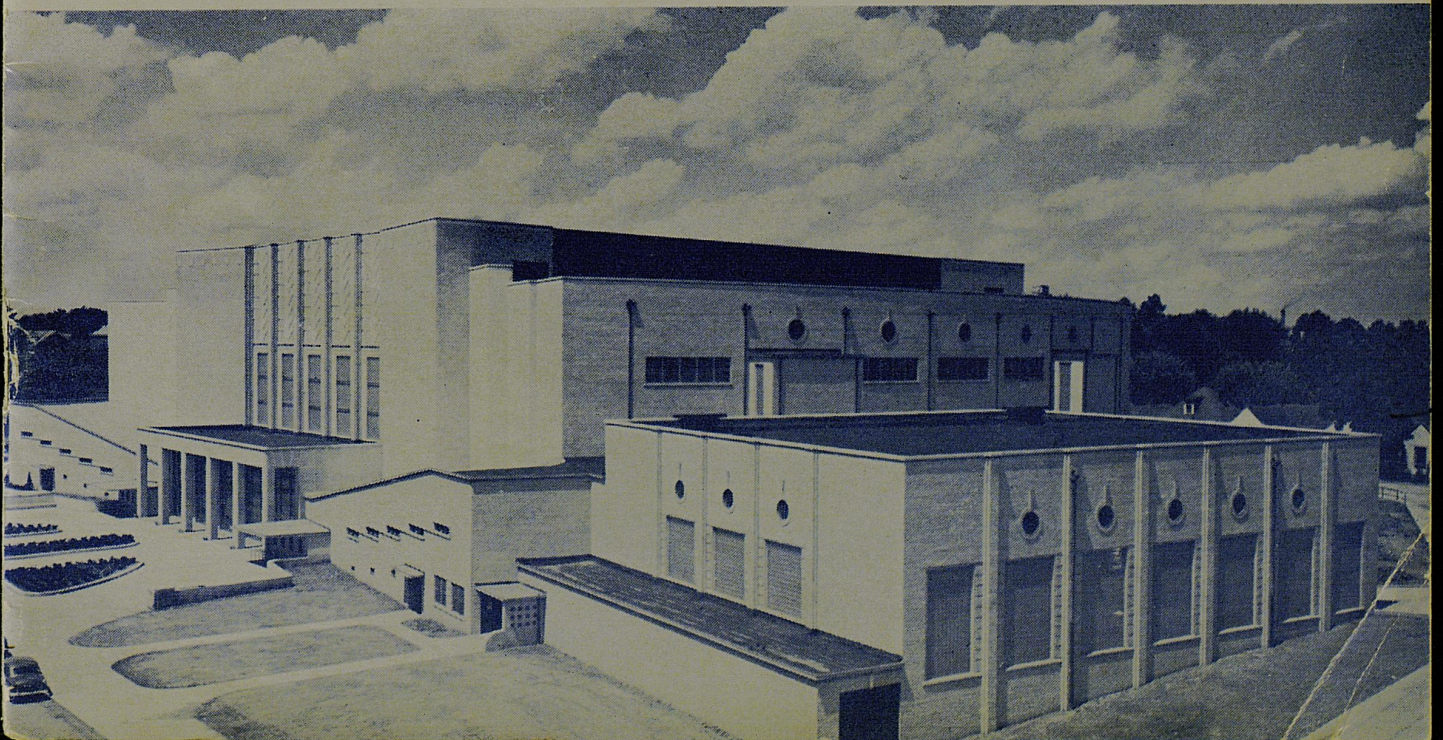
UNIVERSITY OF KENTUCKY MEMORIAL COLISEUM

Kentucky vs. Purdue

Sports Dedication

SATURDAY, DECEMBER 9, 1950

8:00 P.M.



MEMORIAL COLISEUM

HERE IN STONE AND STEEL IS RAISED
A MEMORIAL TO
MORE THAN NINE THOUSAND SONS AND DAUGHTERS
OF THE
STATE OF KENTUCKY
WHO GAVE THEIR LIVES IN BATTLE
THAT WE MIGHT LIVE IN PEACE
ERECT AND STRONG AND FREE

WORLD WAR II 1941-45

"THEY SHALL GROW NOT OLD, AS WE THAT ARE LEFT GROW OLD:
AGE SHALL NOT WEARY THEM, NOR THE YEARS CONDEMN.
AT THE GOING DOWN OF THE SUN AND IN THE MORNING
WE WILL REMEMBER THEM."

IN MEMORY OF MEN WHO DIED



Dr. Donovan

THIS IS A HOUSE built not on sand but on a firm foundation. Fabricated out of steel, stone, concrete, and brick, it is more substantially built than the Coliseum at Rome and should stand as long. This is Kentucky's Coliseum. It belongs to the people. Erected as a memorial to our honored dead of World War II, it is to be used in the service of the living.

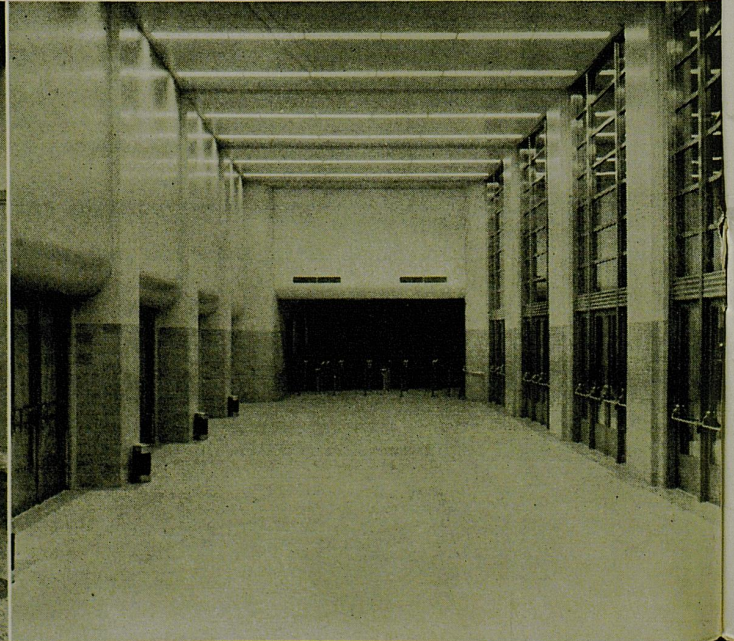
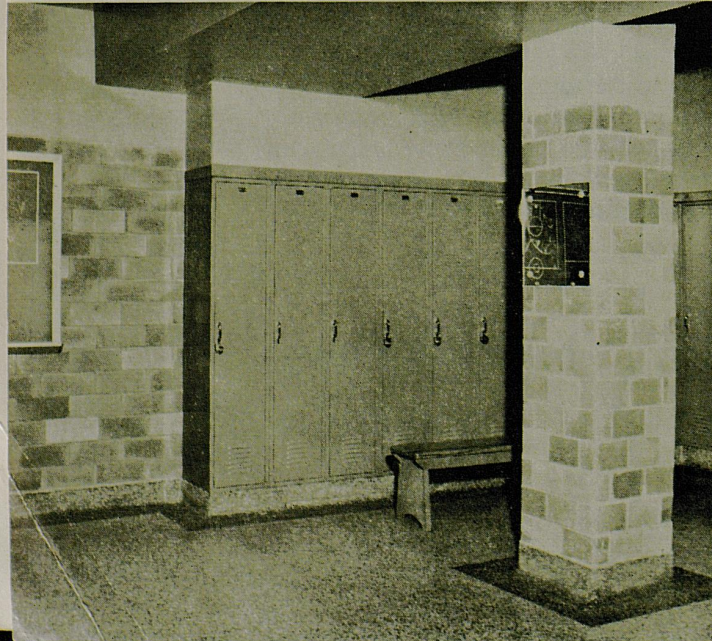
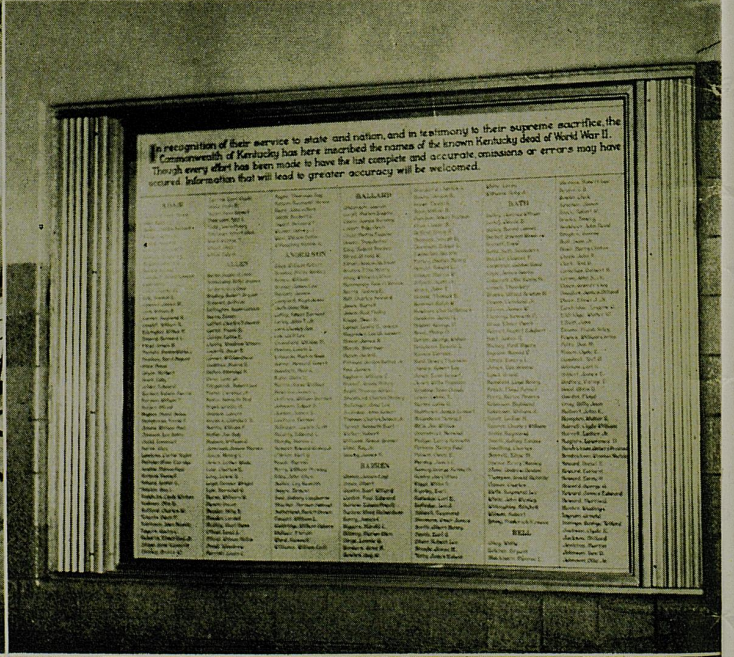
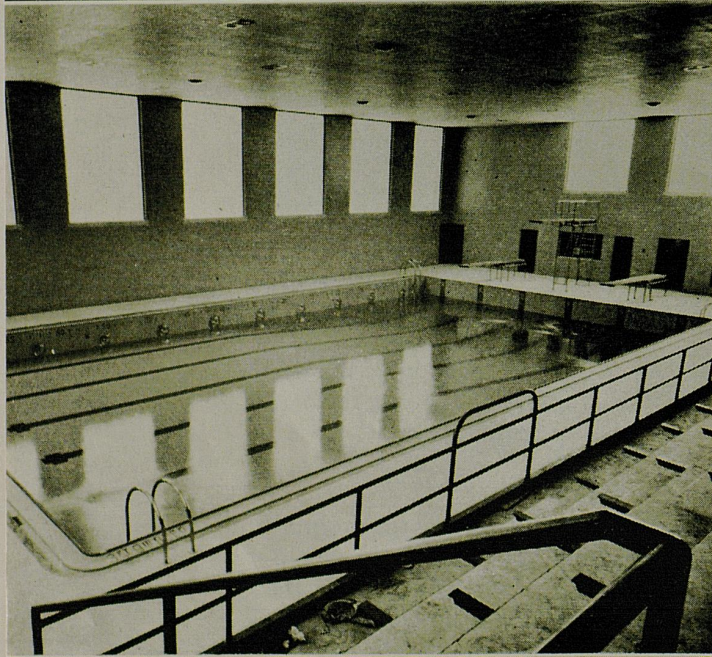
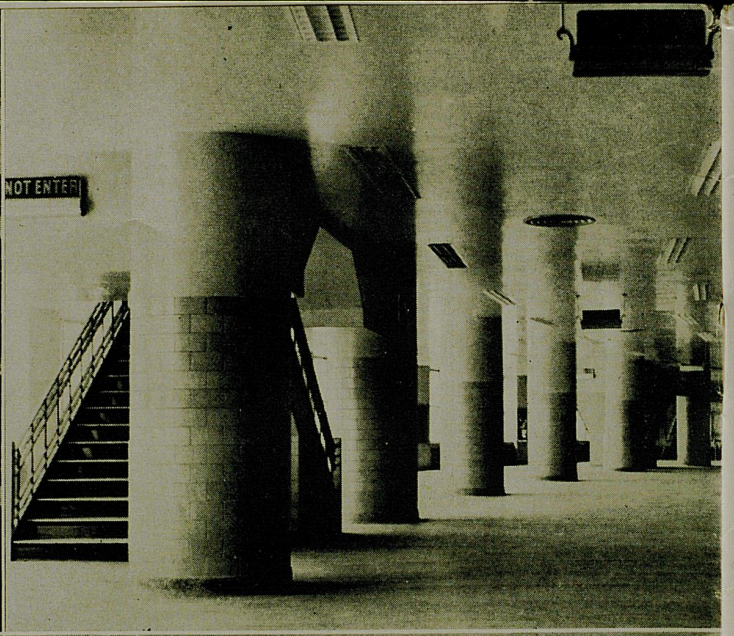
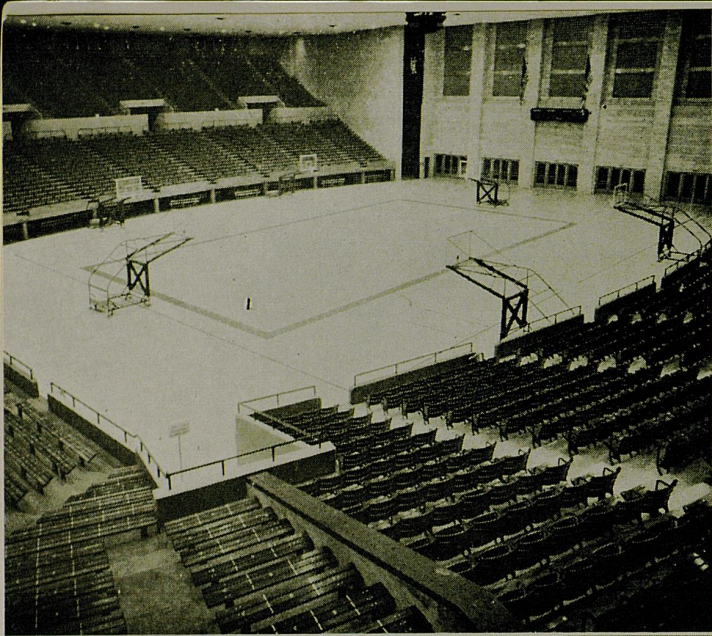
It is an honest building.

This is a house built not for superficial purposes but for an honest program of education. It is a sports arena where thousands may gather in wholesome recreation to witness games of skill played by men who display the finest quality of sportsmanship. It is a gymnasium where students pursue courses in physical education to the betterment of their minds and bodies. It is an auditorium where students and citizens may meet to hear the world's greatest speakers and thinkers bring us wisdom and knowledge. It is a music hall where we may assemble to listen to the great artists of all nations lift us to new heights of aesthetic appreciation. May it, also, frequently be a temple where we may worship and be led into closer communion with God. It will ever be a shrine where the brokenhearted may come to pay homage to their own who paid the last full measure of devotion.

To these ends we dedicate this Memorial Coliseum.

H. A. Donovan.

PRESIDENT



FACTS ABOUT THE COLISEUM

LOCATED ON EUCLID AVENUE between Lexington Avenue and Rose Street, the majestic Memorial Coliseum has a seating capacity of 12,000 for basketball games and 15,000 for programs in which folding chairs may be placed on the playing floor. Seating space for approximately 300 persons is provided alongside the 75-foot six-lane swimming pool. All seats on the building's west side, approximately one third of the total, are theater-type chairs, and the remainder are bleacher type. More than 80 per cent of the Coliseum's permanent seats are at side court.

The building contains ticket sales offices, offices for the athletics director, football coach, basketball coach, all assistant coaches, swimming pool director, and the sports publicity editor. Locker rooms for football, basketball, baseball and all minor sports also are located in the new structure.

Excavation of the building site required removal of 40,000 cubic yards of earth and more than 10,000 cubic yards of rock. Construction required 11,000 cubic yards of concrete and more than 500 tons of reinforcing steel. Other construction materials used in the building include 3,500,000 brick, 3,000 tons of structural steel, 2.3 acres of roofing, and two acres of terrazo flooring.

Measured from the Euclid avenue side (the front), the Coliseum is 82 feet in height. Its acoustically-treated ceiling is 49 feet above the playing floor, and the span of its main trusses is 225 feet. Twenty-six double-doored exits allow the building to be emptied of a capacity crowd in little more than ten minutes, and a combination heating and ventilating system produces six to eight complete air changes per hour.

The basketball court, laid on a sub-floor of concrete, is permanent and cannot be removed.

Near perfect from an acoustical standpoint, the huge auditorium can be used for concerts and lectures as well as for sports events, conventions and all-University convocations. Programs during the school year include concerts by James Melton, the London Philharmonic Orchestra, the Don Cosack Chorus, Artur Rubinstein, and Jascha Heifetz, and lectures by Elmer Davis, Charles Laughton, and Mrs. Eleanor Roosevelt.

The Coliseum's permanent equipment includes a large electric organ, facilities for radio and television broadcasts, and ample space for the working press.

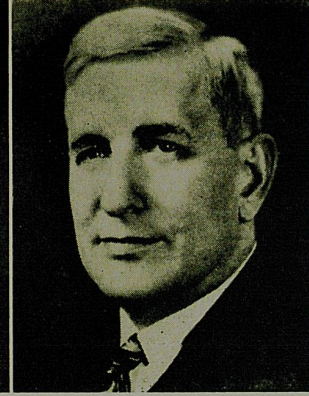
Names of the 9,306 Gold Star Kentuckians have been lettered on permanent plaques which occupy recessed wall panels in the Coliseum entry ramps. Bronze stars have been placed in the concourses of the building by the Student Government Association in honor of the University of Kentucky men who died in the war.



Earle C. Clements



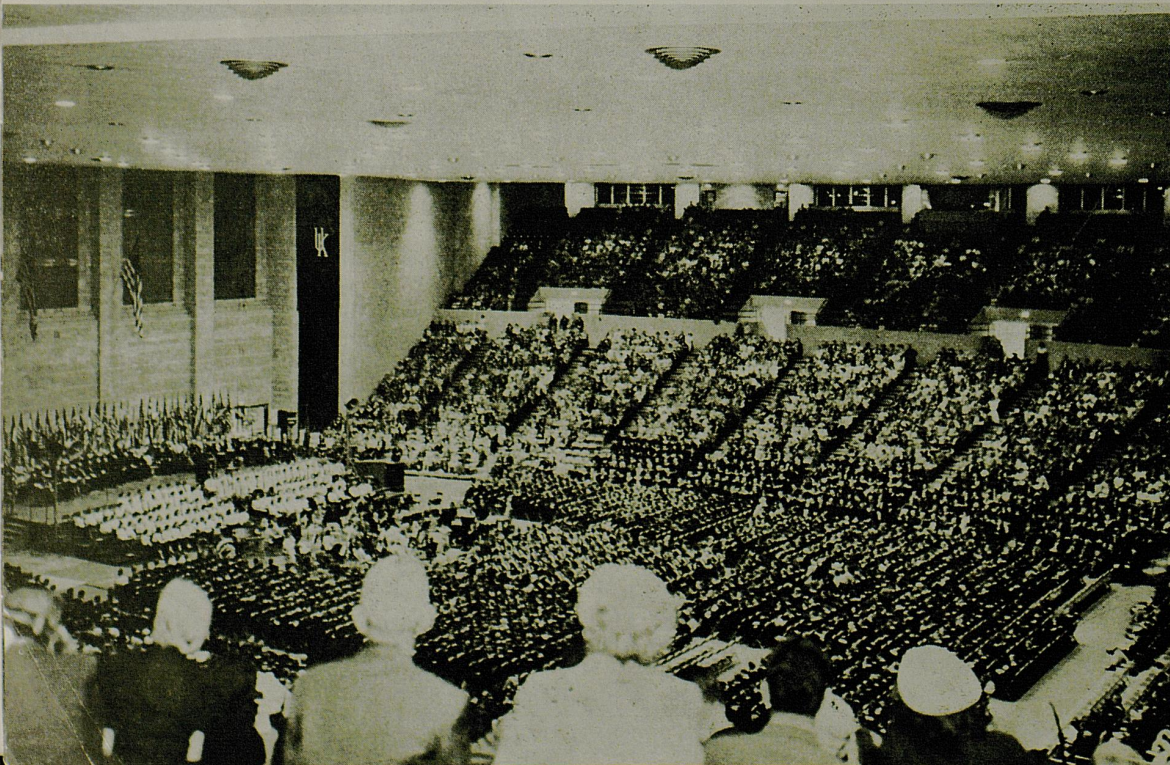
Keen Johnson



Simeon Willis

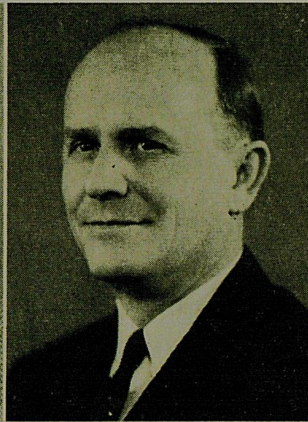
APPROPRIATIONS for the Memorial Coliseum, totaling \$3,100,000, were made under the administrations of three governors — Keen Johnson, Simeon Willis, and Earle C. Clements — and by the General Assemblies of 1942, 1946, and 1948. This sum was not sufficient to complete the building as planned, so the University's Board of Trustees sold \$825,000 worth of bonds to finish the construction. These bonds will be liquidated over a period of twenty years out of income from athletics events conducted on the campus. In round numbers, the Coliseum has cost approximately \$4,000,000, of which the taxpayers have invested \$3,100,000.

Formal Opening of Memorial Coliseum, May 30, 1950.





Albert D. Kirwan



Leo M. Chamberlain



Bernie A. Shively

Athletics at Kentucky

ATHLETICS at Kentucky are organized under the Department of Athletics and a corporation known as the University of Kentucky Athletics Association.

A firm believer in sports and sportsmanship, Dr. Leo M. Chamberlain, Vice President of the University, has general supervision over the Department of Athletics. He also is vice chairman of the Board of Directors of the Athletics Association.

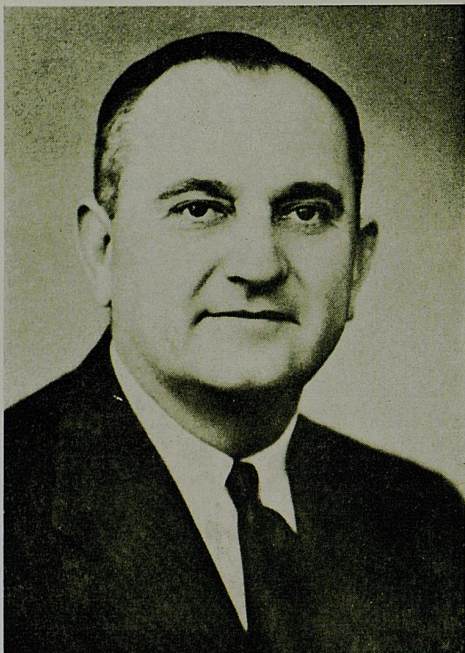
Dean of Students A. D. Kirwan is secretary of the University Athletics Association and serves as faculty representative to the Southeastern Conference. He is a former player and football coach at the University.

Bernie A. Shively, former All-America guard at Illinois and former football coach at Kentucky, serves in the capacity of Director of Athletics, directly supervising one of the nation's top athletics departments.

Maintaining over-all control of U.K. athletics affairs is the Board of Directors of the Athletics Association, composed of the President of the University and ten other directors appointed by him, including five members of the faculty of the University, the president of the Student Government Association, an alumnus of the University, a member of the U.K. Board of Trustees, and two others. Frank D. Peterson, University Comptroller, serves the board as treasurer.

The current Board of Directors consists of the following members:

Dr. H. L. Donovan, Chairman	Dr. Leo M. Chamberlain,
Dr. A. D. Kirwan, Secretary	Vice Chairman
Dr. M. E. Ligon	Dr. Frank Murray
Jerry Jones	Dean D. V. Terrell
R. P. Hobson	Tom Ballantine
H. D. Palmore	Guy A. Huguelet



ADOLPH RUPP —'THE BARON'

"THE MAN IN THE BROWN SUIT" sounds like the title for a good mystery thriller and might very well be if Adolph Rupp, the University of Kentucky's affable wizard of hardwood magic, had not long ago been tagged with the descriptive title by sportswriters because of his preference of brown as a game-night wardrobe.

The 1950 "Coach of the Year" is known to the basketball world by a variety of other titles, such as "Mr. Basketball," "The Baron of Basketball," and "Ol' Rupp and Ready"—but none adequately describes the man who has done more than any other modern tutor to make the cage game a national spectator sport.

Beginning his 21st year at the Bluegrass school, Baron Rupp can look back over a two-decade reign of unparalleled success — an amazing record of 410 wins against 77 losses in 20 seasons coaching Kentucky basketball.

For the re-building job Coach Rupp accomplished on the sophomore-studded 1949-50 Wildcats (25-5), weakened by the loss of four great stars, the New York Basketball Writers Association named Rupp "Coach of the Year." In 1944, he won the highest individual coaching honor in the basketball world — election to the Basketball Hall of Fame sponsored by Helms Foundation. Rupp was the tenth coach in the history of the sport to be so honored by the California organization, which in 1949 selected him as Coach of the Year for the second season in a row and designated the Wildcats as national champions for the third time — an honor given no other collegiate quintet.

Rupp's Kentucky Wildcats can boast an unequalled record of 71 victories against 15 defeats in major tournament competition over the past 20 years, including participation in 14 national classics. The Bluegrass cagers were the first team in basketball history to win two NCAA titles and a National Invitation crown. Coach Rupp and his "Fabulous Five" represented the United States as a unit at the 1948 Olympic Games.

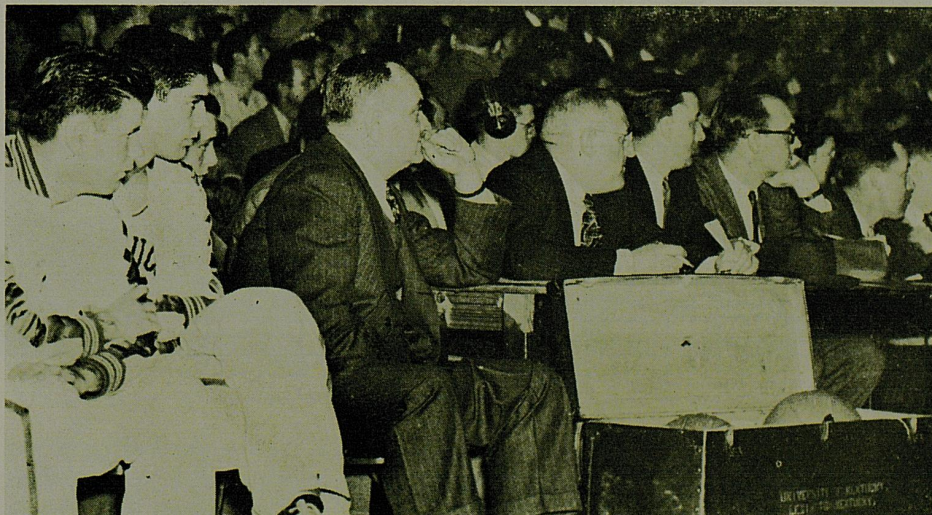
Kentucky Colonel Rupp is the author of a best-seller, "Championship Basketball," which is already being translated into foreign languages. During the past season, he was made an honorary citizen of New Orleans and received the first plaque of appreciation ever awarded by the Sugar Bowl basketball committee. He was honored in 1949 as the outstanding citizen of Lexington, and holds high office in the Oleika Temple of the Shrine. In 1945, Rupp was named to the Kentucky Hall of Fame, the second man to be so honored in the history of the state.

Coach Rupp is a native of Halstead, Kansas, where he captained the high school cage team. Later, at the University of Kansas, he played under the tutelage of Dr. Forrest (Phog) Allen, a noted basketball mentor. As a high school coach at Freeport, Illinois, his teams won 71 out of 82 games prior to his entry on the Kentucky scene in 1930.



Lancaster

Baron Rupp's capable assistant is genial Harry Lancaster, former Georgetown college athlete.



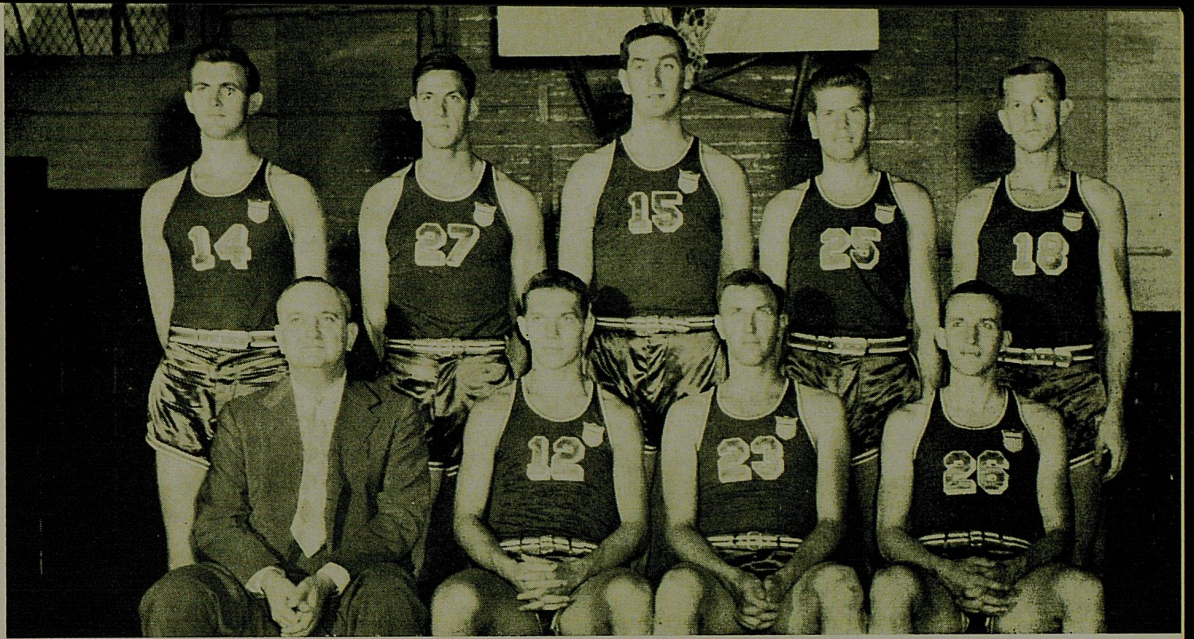


ALUMNI GYMNASIUM



THIS BUILDING SERVED AS THE HOME COURT OF
UNIVERSITY OF KENTUCKY BASKETBALL TEAMS
FROM 1924 TO 1950
DURING THIS PERIOD AND ON THIS FLOOR
TEAMS REPRESENTING THE UNIVERSITY
PLAYED 287 GAMES, WINNING 262 AND LOSING 25.
FROM 1931 TO 1950
UNDER THE DIRECTION OF
COACH ADOLPH F. RUPP
UNIVERSITY TEAMS ESTABLISHED A HOME RECORD OF
204 VICTORIES AND 8 LOSSES.
DURING THE SAME PERIOD THE TEAMS OF COACH RUPP WON
EIGHTY-FOUR CONSECUTIVE HOME VICTORIES, 1943 - 1950
SIXTY-FOUR CONSECUTIVE VICTORIES IN THE
SOUTHEASTERN CONFERENCE, 1945 - 1950
TWELVE SOUTHEASTERN CONFERENCE TOURNAMENT
CHAMPIONSHIPS, 1933 - 1950
THREE SUGAR BOWL CHAMPIONSHIPS, 1939, 1940, 1950
THE NATIONAL INVITATIONAL TOURNAMENT
CHAMPIONSHIP, 1946
TWO NATIONAL COLLEGIATE
ATHLETIC ASSOCIATION CHAMPIONSHIPS, 1948, 1949
THE OLYMPIC CHAMPIONSHIP, LONDON, ENGLAND, 1948

TO COMMEMORATE THESE UNPARALLELED ACHIEVEMENTS
THIS TABLET IS ERECTED BY THE
UNIVERSITY OF KENTUCKY ALUMNI ASSOCIATION.
DECEMBER 9, 1950



Kentucky Members of the World Champion 1948 Olympic Basketball Team:
Coach Rupp, Beard, Barker, Rollins, Holland, Jones, Groza, Line, Barnstable.

Basketball at Kentucky

ANY STORY OF A MAN who began "on a shoestring" and moved along to acquire a financial empire has a parallel in the story of University of Kentucky basketball. The first quintet at U.K. was a one-basketball outfit, and the ball used for all practice and games was furnished by the players, who chipped in a quarter or a half-dollar apiece to buy the heavy little balloon.

Basketball appeared on the campus soon after the turn of the century, the game itself then very, very young. The school made no provision for a coach, but a gymnasium had been provided — perhaps with no such specific purpose in mind — when Barker Hall was erected and placed in use in 1902. The south end of the new structure housed what has since become known as Buell Armory, where cadets drilled on a dirt floor. In the other wing was a shiny new gymnasium.

Kentucky's first recognized varsity hoop team, according to available records, played only two games — in the season of 1904-05 — and broke even. The pioneering cagers participated in 12 games the following season. Thomson R. Bryant, now Assistant Director of Agricultural Extension at U.K., was one of the first varsity hoopsters. Dick Barbee was another. Finally, a duly designated basketball coach came along, for the season of 1907-08, in the person of one W. H. Mustaine.

Many of the players in the first decade or so of Kentucky basketball were survivors of those rugged early-day gridiron altercations on near-by Stoll Field, who mostly turned to the new game for a little fun and exercise

during the winter months, but the sport had established itself in its own right by the time a U.K. team captured the Southern collegiate championship in a tournament in Atlanta in 1921.

A Lexingtonian, Bill King, cashed the free throw that nipped Georgia 20-19 in the final contest there, bringing the first of many championships earned by U.K. in basketball and spurring public clamor for a better court.

The first gym, which for the last 20 years has been known as the women's gymnasium, was the scene of several of the early state high school basketball tournaments although having room for only three or four hundred spectators. Alumni Gymnasium, then viewed as a huge structure, was used first in 1924-25, and many wondered whether its 2,800 seats would ever be needed.

It seemed particularly fitting to most that the first Kentucky team to use the spacious new gymnasium was composed largely of Capt. Jimmy McFarland, Will Milward, Burgess Carey, and Lovell (Cowboy) Underwood, all of whom had been regulars on the team that brought the national high school championship in 1922 to old Lexington Senior High. Rounding out the first team for that campaign was C. T. (Turkey) Hughes, who was to become the first U.K. athlete earning varsity letters in four sports.

Fairly soon after the appearance on the scene for coaching duty of Adolph Rupp, championships began to come with regularity, crowds began to overflow the "huge" new hall not just occasionally but for most of the games.

Alumni Gymnasium had been badly outgrown long before it could be abandoned for the world's handsomest basketball hall—a climax in a story of success from a shoestring start.—LARRY SHROPSHIRE.

Alumni Gymnasium, Scene of Many Wildcat Triumphs.



PAUL BRYANT
—'THE BEAR'



ONE OF THE NATION'S outstanding young football mentors, Paul Bryant has become synonymous in the South with the rise to national prominence of Kentucky's Bluegrass Wildcats.

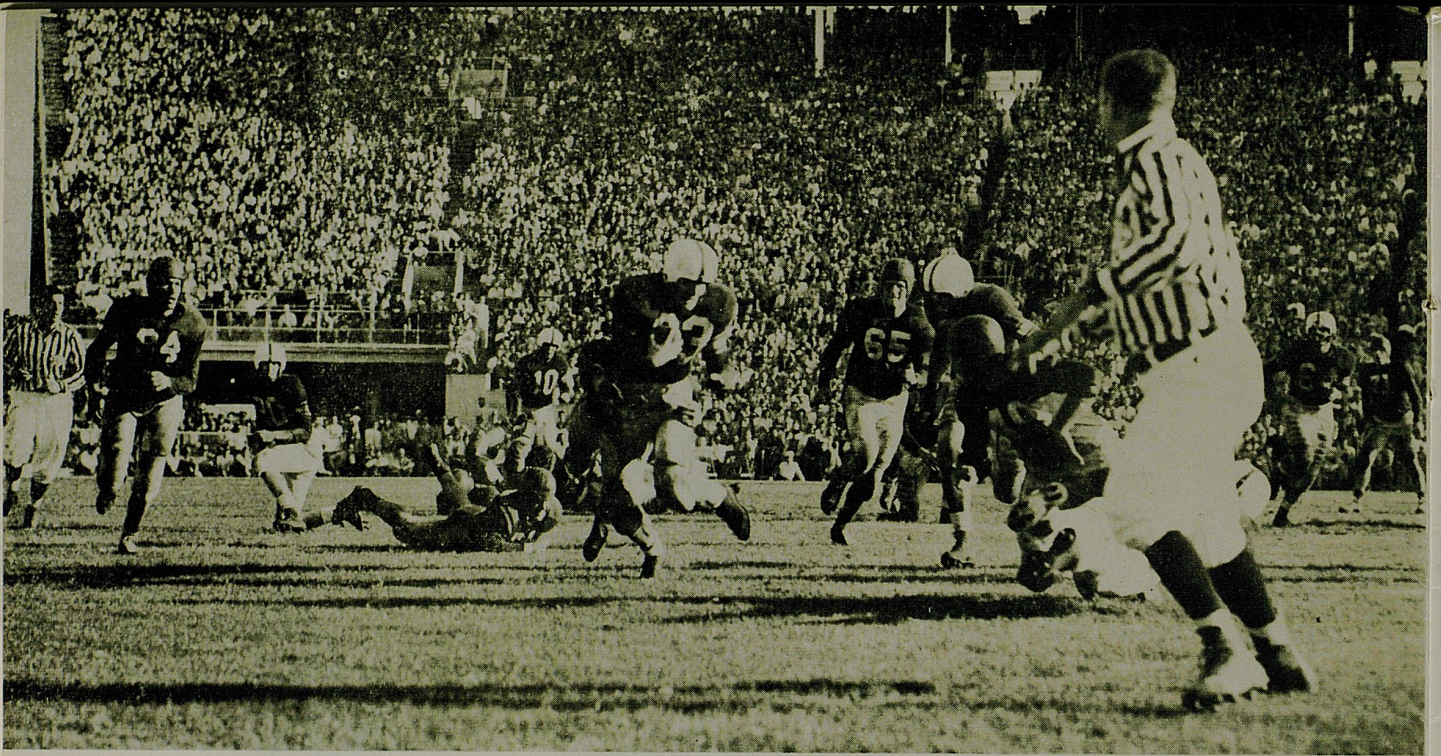
In five seasons at the helm of the Kentucky football machine, the 36-year-old former Alabama star has lifted the victory-famished Wildcats out of the doldrums of the Southeastern Conference football cellar and firmly established them as one of the nation's leading elevens.

The outcome of the efforts of 'Bear' Bryant and his staff of capable assistants has been Kentucky's best record in the modern history of the school, its first major post-season bowl appearance (Orange Bowl), and a visit to the coveted Sugar Bowl this year.

A native of Fordyce, Arkansas, Bryant starred in football at Alabama from 1933-35 and became an assistant Tide coach following graduation. After four seasons, he moved to Vanderbilt as line instructor and worked with the Commodores two years before entering the Navy in 1941.

In 1945, Bryant became head coach at the University of Maryland and, in one year, gave the Terps their best football record in history (6-2-1).

Moving to Kentucky for the 1946 season, Bryant took just one year to accomplish the seemingly-miraculous feat of rebuilding the shattered foundations of U.K. football into a solid front.



Football at Kentucky

U. K. FOOTBALL teams played 459 games in 62 seasons without receiving a bowl bid and, with the exception of a few seasons, did little to command the attention of the gridiron world. Then along came Paul Bryant. Under him, the Wildcats played 54 games through five seasons and they:

1 — Received invitations to three bowl games; 2 — Became the first Kentucky football team in the school's long grid history to capture the coveted Southeastern Conference title; 3 — Astounded the football world by rising from the role of whipping boy for the S.E.C. to one of the nation's major and feared powers.

This awesome and successful "Five Year Plan" was constructed on 39 victories, 13 defeats, and two ties. Of the triumphs, 14 were achieved in conference play. And those victories in five years are more than Wildcat teams had won in the loop in the preceding 12 years.

The hard-working, serious Bryant is the 26th coach in the school's history. During his tenure, and besides turning out three bowl teams and one S.E.C. champ, he has produced nine All-Southeastern Conference players and two All-Americans. Previously, Kentucky had had only tackle Clyde Johnson as an All-American in 1942 and these All-Southeasterns: Ralph Kercheval, 1933; Bert Johnson in 1934; Clyde Johnson in 1942; and Wash Serini in 1948.

Added to the honor scroll are tackle Bob Gain, mentioned on many All-American teams in 1949 and a near unanimous choice in 1950, and quarterback Babe Parilli, a 1950-All-American choice.

Kentucky received its first bowl invitation — to the Great Lakes Bowl at Cleveland — in the gusty year of 1947. Cold, piercing winds lashed off Lake Erie, icily sweeping through the canyon of Cleveland's giant stadium. On that bitterly raw, gray December day, a chapter was added to Kentucky football history. The fact that only 10,000 people challenged the miserable weather to see the game, in which the Wildcats licked Villanova, did not dampen the elation of Kentucky rooters.

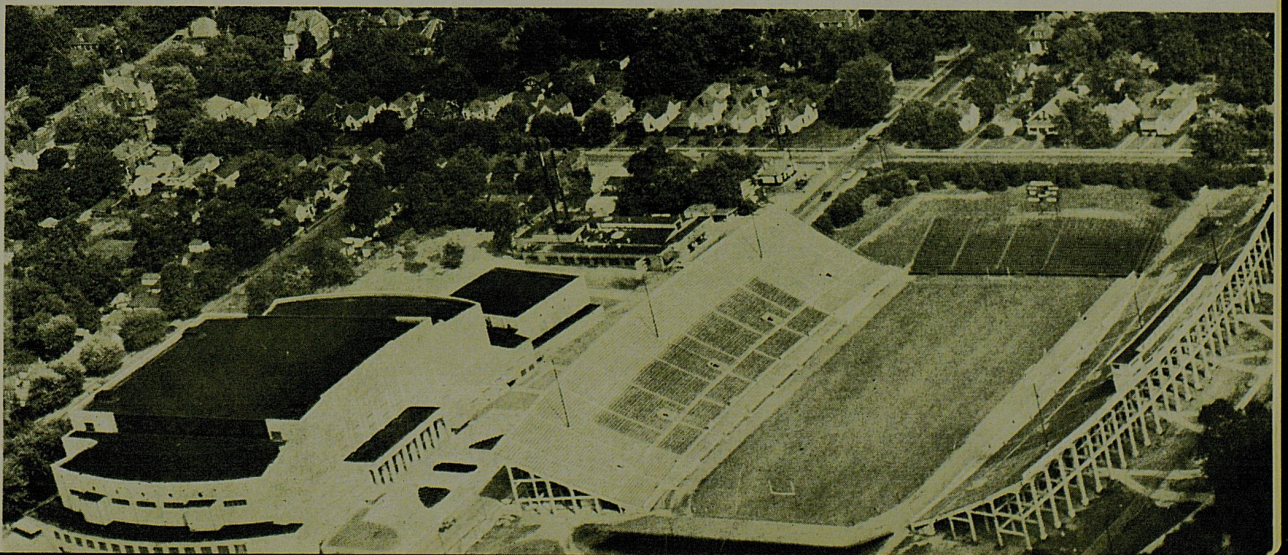
The setting was quite different in 1949. Behind the tropical background of enticing Miami, Kentucky went to the Orange Bowl, where it was conquered by Santa Clara. But the Cats were making progress.

They climaxed their epochal rise in 1950 with an outstanding 10-1 record and their second major bowl invitation. On New Year's Day, Kentucky will play Oklahoma in the Sugar Bowl.

Back in the handlebar mustache days, Kentucky came up with some creditable outfits. Football actually started in 1881 at Kentucky, and the Wildcats won the first game they ever played. The score: State $7\frac{1}{4}$, Transylvania 1. Transy came back, however, to win the next two, 2-1 and $3\frac{3}{4}$ to $2\frac{1}{4}$. The scoring of this rugby football is peculiar. Newspaper accounts give only the score, and no explanation.

So began Kentucky football history. It will be interesting, indeed, to see where these amazing Wildcats go from here. — LARRY BOECK.

Aerial View, University of Kentucky Athletics Plant.





The Kentucky grid staff: Back row (left to right) Trainer Charles Harper, and Assistant Coaches Ermal Allen, George Chapman, Bill McCubbin and Dick Holway; seated, Assistant Coaches Frank Moseley and Carney Laslie, Coach Bryant, and Asst. Coach Clarence Underwood. Assistant Coach Unis Saylor is not in the picture.

ASSISTANT FOOTBALL COACHES

CARNEY LASLIE . . . Product of University of Alabama (1930-32). Joined Tide staff for year after graduation before moving to Blytheville (Ark.) High as head coach. Served next as line coach at V.M.I. Entered Navy in 1942 and coached North Carolina Pre-Flight eleven. Following release in 1945, he joined Bryant at Maryland U. and moved to Kentucky with Bryant in 1946.

FRANK MOSELEY . . . Quarterbacked Crimson Tide elevens of 1931-33, playing on same teams as Bryant and Laslie. Backfield coach at Kentucky from 1934-42. Entered Navy in 1942 and served as gunnery officer aboard aircraft carrier Lexington. Joined Coach Bryant's staff at Maryland U. in 1945 and returned to the Bluegrass in 1946 with Bryant.

ERMAL ALLEN . . . Joined Kentucky coaching staff after being ruled ineligible following Wildcats' first two games of '46 season in one of SEC's most controversial cases. On leave in 1947, he played T-quarterback for Cleveland Browns.

CLARENCE UNDERWOOD . . . A 1938 graduate of Marshall College where he was a varsity guard for three years. Coached at Beckley (W.Va.) High. Joined Kentucky staff in 1948.

RICHARD HOLWAY . . . Regular left guard and alternate captain of Kentucky's Orange Bowl eleven of 1949. Dick joined the coaching staff following graduation.

GEORGE CHAPMAN . . . Added to coaching staff this summer after successful career at Augusta (Va.) Military Institute. Graduate of Georgia in 1935.

BILL McCUBBIN . . . Played three years as Wildcat end (1937-39). Part-time assistant on U.K. coaching staff for five years.

UNIS SAYLOR . . . Played a year with U.K. freshmen before an injury forced him to quit. Joined coaching staff as part-time assistant this season.

CHARLES HARPER . . . Named Kentucky trainer last season after serving at several major universities. Graduate of Mercer.



Don Seaton



Frank Moseley

Other Major Sports

BASEBALL AND TRACK are two of the oldest sports on the University of Kentucky athletic agenda.

The first baseball competition on record took place April 3, 1896, when Centre and U.K. (then Kentucky A. & M.) split a doubleheader, Centre taking the first game, 12-6, and Kentucky winning the nightcap, 13-9.

The track team dates even further back, having begun in 1894, according to the records. No individual meet scores are set down for that season, but the statistics do show that the team won second place in the state meet, including a first place in the tug-of-war.

Since their birth back in the turtle-neck-sweater days, both sports have advanced steadily, and in the past few years have been contributing their share to the mounting athletic prominence the University is gaining.

In 1950, Kentucky won the Western Division SEC title, but was defeated by Alabama in the playoffs. The Cats participated in the NCAA tourney, but were ousted by Wake Forest. The baseball team, coached by Frank Moseley, posted a 16-7-1 record this year.

The track team, led by stellar hurdler Tony Dallas, lost only one meet in 1949 — to Tennessee — while winning three dual meets. Dallas compiled the amazing total of 73½ points in 4 meets for Coach Don Seaton's aggregation, or an average of over 18 points per meet. In 1950, the harriers split even, winning two and losing two. Dallas again was the most prolific point-maker, despite being injured part of the time.—BOB GORHAM.



Breckinridge — Fencing Reece — Swimming Paton — Tennis Atkins — Golf

Minor Sports at UK

ONE OF THE MOST under-rated phases of athletic activity at universities throughout the country is the minor sports program, and the 34 years of non-major sports history at U.K. is no exception.

While the older, more prominent spectator sports of football and basketball for many years have held the major share of attention at Kentucky, minor sports have constantly maintained high standards and attracted numerous good athletes to their program of wholesome inter-collegiate athletic competition.

For years the University has fielded teams, at one time or another, in golf, tennis, swimming, fencing, boxing, wrestling, rifle, and cross-country. In golf, the Kentuckians have made respectable marks since 1930. Season records indicate that U.K. teams have been above average consistently and the '50 niblickers posted a score of 12 wins, four losses and one tie. The Wildcats' senior captain, Johnny Owens, became the first Kentucky golfer to annex the Southeastern Conference individual championship.

A few seasons of swimming are on the record books, but the sport was interrupted after 1942, due principally to the lack of pool facilities on the campus. Swimmers will resume competition this winter in the new Memorial Coliseum pool, one of the finest in the country.

Competition by mail has resulted in outstanding success for the University's ROTC rifle team, which has won numerous tournaments and meets since 1930, including two national championships in the Hearst Trophy matches. Tennis activity dates back to 1916 and has been marked by intermittent success due to the handicap of inexperienced players in the exacting sport. Fencing has captured attention with exceptionally good records since 1938. Last season, the team recorded seven victories against three defeats.

Boxing, wrestling, and cross-country have been interrupted for long periods of time and have not been resumed as yet.

GREETINGS FROM PURDUE

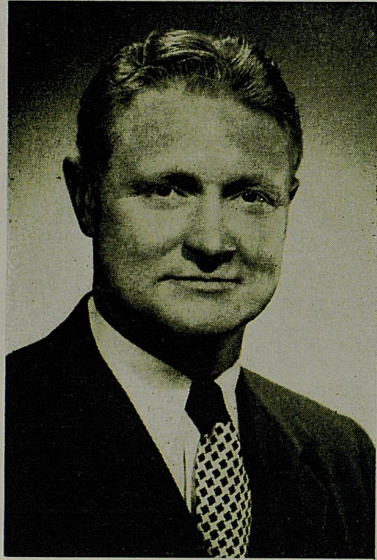


Dr. Hovde

PURDUE UNIVERSITY is proud to have a part in the program of dedication of the new Memorial Coliseum of the University of Kentucky.

We send greetings and congratulations to all members of the University and the citizens of Kentucky on the completion of a great structure that provides not only a fitting memorial to Kentucky men and women who gave their lives in defense of the nation, but also unexcelled facilities for athletic, cultural, and educational programs that will be invaluable to the present and coming generations.

Frederick L. Hovde
President, Purdue University



GUY J. (RED) MACKEY, Purdue's athletic director, has virtually grown up with the expanding program of the Division of Physical Education for Men and is thoroughly familiar with coaching problems as well as administrative details. During his regime, the Boilermaker physical plant has been developed into one of the most modern, unified setups in the country. A 1929 graduate of the Purdue School of Agriculture, Mackey launched his twenty-second year as a member of the Boilermaker athletic staff this fall. A native of New Albany, Ind., he won three major letters during his undergraduate days as an outstanding end on the gridiron combinations of 1926, 1927, and 1928. Following his graduation, Mackey first joined the Purdue staff as assistant freshman coach in the fall of 1929.

Purdue Chieftains



RAY EDDY, who steps into the collegiate coaching ranks for the first time this year, has been as successful a high school coach as he was a member of two championship teams during his playing days at Purdue. Following his graduation in 1934, Eddy started coaching at Tell City, Ind., high school, where he remained for five years before moving to Madison as head coach in 1939. In 11 years at Madison, his teams compiled a record of 10 sectional, six regional, and three semi-final tournament championships. Eddy entered Purdue as a freshman in 1929, and won a forward berth as a sophomore on the 1931 quintet. As a junior, he gained all-conference recognition on the Purdue team that won the conference title as well as the mythical national championship.

Basketball at Purdue

PURDUE INVADES KENTUCKY with a great basketball background, including the distinction of heading the all-time Big Ten standings. The Boilermaker leadership is shown in the following official all-time conference standing:

	Won	Lost	Pct.
Purdue	314	213	.596
Wisconsin	317	217	.594
Illinois	314	218	.590
Michigan	204	188	.520
Ohio State	216	224	.491
Indiana	240	252	.488
Minnesota	257	280	.479
Iowa	196	262	.428
Northwestern	200	289	.409
Chicago	185	299	.382

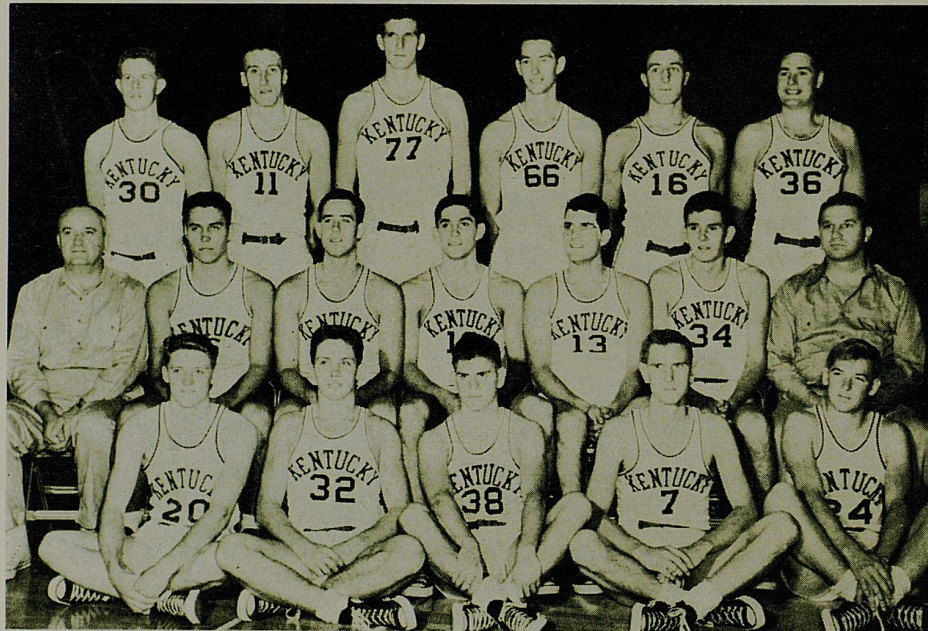
While compiling their all-time leadership on the basis of games won and lost, the Boilermakers have won or shared in 13 Big Ten titles to share the league lead with Wisconsin in that respect. Purdue has won seven undisputed championships, in 1911, 1922, 1930, 1932, 1934, 1938, and 1940, and shared in six others, in 1912, 1921, 1926, 1928, 1935, and 1936. The 1932 team, which had a 17-1 record for the season as a whole, was generally recognized as national champion.

Over the span of years, Purdue players have figured prominently in All-American selections. The list of generally recognized All-Americans follows: 1921, Donald White; 1922, Ray Miller; 1926, George Spradling; 1929-1930, Charles Murphy; 1930-1931-1932, John Wooden; 1934, Emmett Lowery; 1934, Norman Cottom; 1935-1936, Robert Kessler; 1938, Jewell Young; 1940, Fred Beretta.

The Boilermakers' home court is provided by a modern fieldhouse, dedicated in 1938, which provides seating accommodations for 10,500 spectators. The fieldhouse was the site of last year's Kentucky-Purdue game which was won by the Wildcats after a great battle, 60-54.

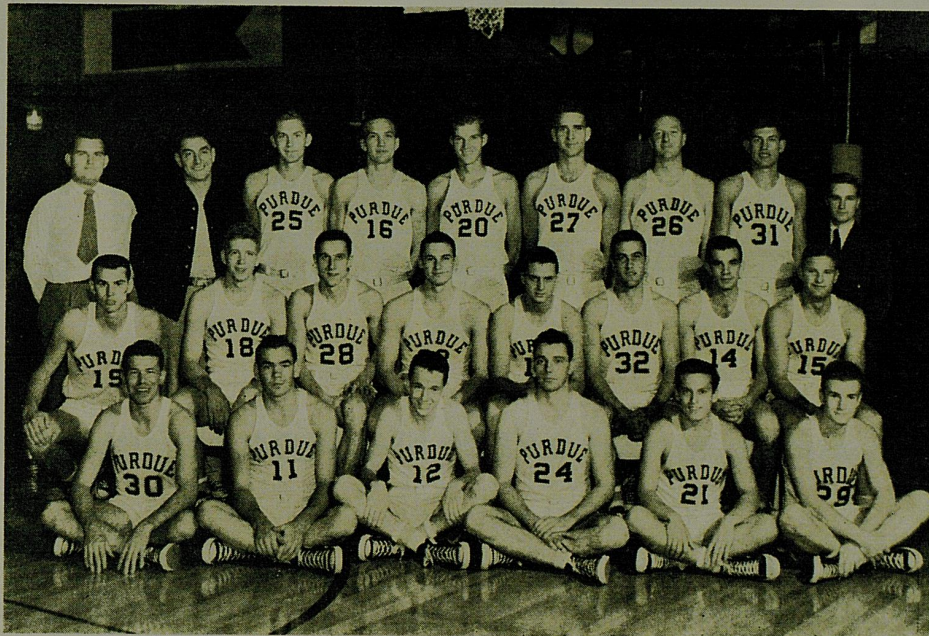
Rebuilding and a return to fast-break tactics provide the main objectives of Ray Eddy, Purdue's energetic new head basketball coach, as he attempts to regain a place in the hardwood spotlight for the 1950-51 Boilermaker combination that can be rated no better than a question mark.

In a sense, even though six major lettermen are available, Eddy is starting from scratch in his reconstruction venture with a comparatively young squad that lacks both size and experience but apparently will have better than average speed. As trimmed from the original turnout of candidates, his current varsity squad includes 11 sophomores, six juniors, and three seniors.



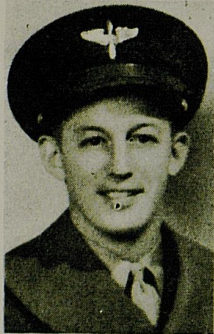
UK BASKETBALL ROSTER

Number	Name	Pos.	Ht.	Wt.	Age	Class	Home Town
20	Castle, Lindle	G	5-11	165	18	Soph.	Winchester, Ky.
6	Hagan, Cliff	C-F	6-4	210	19	Fr.	Owensboro, Ky.
19	Hirsch, Walter (Capt.)	F-C	6-3	185	21	Sr.	Dayton, Ohio
34	Lansaw, Paul	F	6-2	180	22	Jr.	Middletown, Ohio
66	Layne, Roger	C	6-7	185	21	Sr.	McKamie, Ark.
11	Linville, Shelby	F-C	6-5	210	21	Jr.	Middletown, Ohio
36	Morgan, Reed	F	6-4	200	20	Jr.	Milwaukee, Wis.
35	Newton, C. M.	G-F	6-2	190	19	Jr.	Ft. Lauderdale, Fla.
18	Price, Dwight	F	6-2	175	19	Soph.	Lexington, Ky.
30	Ramsey, Frank	G-F	6-3	180	19	Soph.	Madisonville, Ky.
77	Spivey, Bill	C	7	215	21	Jr.	Macon, Ga.
7	Strong, Guy	G	6	165	20	Jr.	Irvine, Ky.
16	Tsioropoulos, Louis	C-F	6-5	195	20	Soph.	Lynn, Mass.
38	Watson, Bobby	G	5-10	175	20	Jr.	Owensboro, Ky.
32	Whitaker, Lucian	G	6	175	20	Jr.	Sarasota, Fla.



PURDUE BASKETBALL ROSTER

Number	Name	Pos.	Ht.	Wt.	Class	Home Town
11	Price, Samuel	G	5-11	175	Jr.	Rossville, Ind.
12	Toeppe, John	F	6-1	170	Soph.	Frankfort, Ind.
14	Westall, Dave	F	6-1	170	Sr.	Olney, Ill.
15	Greiner, Norman	G	6-2	180	Sr.	Ft. Wayne, Ind.
16	Bahler, Glenn	F	6-3	180	Sr.	Rensselaer, Ind.
17	Dermody, John	G	6-2	175	Soph.	Calumet City, Ill.
18	Bol, Donald	F	6-1	185	Jr.	Lafayette, Ind.
19	McNulty, Carl	F	6-3	180	Jr.	Logansport, Ind.
20	Horn, Martin	C	6-5	190	Jr.	Rossville, Ind.
21	Eubanks, Paul	G	5-9	145	Soph.	Chicago, Ill.
22	McGiffin, John	F	6-1	185	Soph.	Kendallville, Ind.
23	Brewster, Darrel	F	6-2	201	Jr.	Portland, Ind.
24	Stone, James	F	6-1	175	Soph.	Summittville, Ind.
25	Ritter, James	F	6-3	185	Jr.	Scottsburg, Ind.
26	Anderson, David	C	6-4	210	Soph.	Hammond, Ind.
27	Storm, Howard	C	6-5	210	Jr.	W. Springs, Ill.
28	Rokicki, Ted	G	6-0	165	Soph.	Toledo, O.
29	Santee, Neil	G	5-11	160	Soph.	Rockford, Ill.
30	Server, Jack	G	6-1	165	Soph.	Madison, Ind.
31	Calhoun, Glen	C	6-4	180	Soph.	Farmer City, Ill.
32	Pollom, Thomas	F	6-2	180	Soph.	Indianapolis, Ind.



Adams



Beasley



Beeler



Botts



Brewer

'K' MEN WHO DIED IN WORLD WAR II

ADAMS, A/C William Frank, 27, A&S 1935-39, son of Mrs. Olive Frank Adams of Louisville, and the late Martin Lillard Adams. While attending the University of Kentucky he was captain of the golf team in 1937-38. Prior to joining the Army Air Corps on November 2, 1942, he was a member of the firm of Martin L. Adams and Sons, general contractors, in Louisville. He was sent first to Pine Bluff, Ark., and then to the air base at Coffeyville, Kans., where he was in training at the time of his death. Aviation Cadet Adams was killed July 9, 1943, when his parachute failed to open as he jumped from a disabled bomber over the Coffeyville base.

BEASLEY, 1st Lt. Virgil Kinnaird, 26, LLB. '45, son of Mrs. Virginia King Beasley of Lexington and the late Rurich Nevel Beasley. At the University of Kentucky he was president of the Student Bar Association, a member of Alpha Tau Omega, Scabbard and Blade, Phi Alpha Delta, and was a member of the fencing team. Entering the service in 1941, he served in North Ireland prior to participating with the armored infantry in the invasion of French North Africa. Lt. Beasley died of wounds received November 8, 1942, during the landing of American troops at Oran. His degree was awarded posthumously.

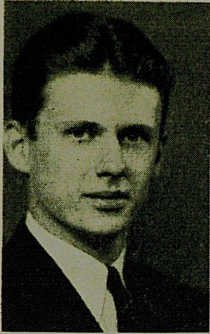
☆

BEELEER, Sgt. Robert J., 21, Engr. 1942-43, son of the late Mr. and Mrs. Andrew Beeler of Lebanon Junction. While attending U.K., he was a member of the football team. He joined the Army Air Corps on July 1, 1943, attended training schools in Louisiana, Illinois, Arizona, and Wyoming, and went overseas in January, 1945. Before his death he took part in bombing raids over Burma, Thailand and China. A radio operator and gunner on a B-24, he lost his life May 8, 1945, when the plane of which he was a crew member exploded after taking off from the airfield at Madhaiganj, Province of Bengal, India.

BOTTS, 1st Lt. Walter Coleman, 28, A.B. '40, son of Mrs. May Barnes Botts and the late Robert LeeRoy Botts of Winchester, and husband of Mrs. Marguerite Gordon Botts of Louisville. While attending the University he was a member of the tennis team. He joined the Army Air Corps in April of 1942 and received training at Brooks Field, Randolph Field and Myrtle Beach. In November, 1943, he was sent to the Pacific area as pilot of a Liberator bomber. Lt. Botts was reported missing in action over Truk Island on April 2, 1944, and declared dead on February 5, 1946. Lt. Botts was awarded the Air Medal.

☆

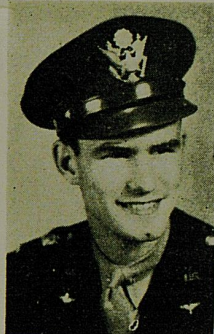
BREWER, 2nd Lt. Melvin Charles, 25, B.S. in Com. '43, son of Mr. and Mrs. Calvin J. Brewer and husband of Mrs. Jacqueline Bir Brewer of New Albany, Ind. While attending the University of Kentucky he was a star basketball player from 1941 through the spring of 1943. Brewer entered the Army on May 10, 1943, following his graduation from the University where he had taken advanced military training. He received his commission at Ft. Benning, Ga., and was sent overseas for combat. Lt. Brewer lost his life while fighting in France on August 6, 1944. Besides his wife and parents, his two children, Vicki Lynn and Melvin Charles, survive.



Colby



Cole



Dunn



England



Garland

'K' MEN WHO DIED IN WORLD WAR II

COLBY, Ensign Carl L., 27, B.S. in Met. Eng. '40, son of Mr. and Mrs. Martin Colby of Chicago, Ill. While attending the University of Kentucky he was a member of Beta Phi Sigma and Sigma Phi Epsilon and was on the swimming team. A member of the Naval Reserve, he was called to duty on July 15, 1943, and was stationed with the V-12 unit at Purdue University and later at Minneapolis, Minn. Next he took aviation training at Corpus Christi, Tex., and Daytona Beach, Fla. His death occurred October 2, 1945, at Deland, Fla., while he was diving at a target and his plane failed to come out of the dive, crashing into a lake.

COLE, 1st Lt. John Sherman, Jr., 22, B.S. '41, son of Mr. and Mrs. J. Sherman Cole of Nicholasville, and husband of Mrs. Constance Larson Cole. While attending the University he was on the baseball team. He was called to active duty August 28, 1941, and served in the armored division at Ft. Knox. His death occurred November 8, 1942, in the African invasion at Oran. When he was killed he was aboard one of two Coast Guard cutters that fought their way under heavy fire from coast batteries and French war vessels to force the boom in the harbor. His son, John Sherman Cole III, also survives.



DUNN, Capt. John Allen, 24, B.S. in Com. '41, son of Mr. and Mrs. Eugene Allen Dunn of Paducah, formerly of Fulton, and husband of Mrs. Virginia Fishback Dunn. At U.K. he was on the track team. He went to the China-Burma-India theater with the first group of pilots to fly B-29's. Capt. Dunn took part in bombing raids over Japan, Manchuria, and Formosa, and was killed November 21, 1944, at Anhang, China, when his plane, which was hit on a mission over Japan, made a crash landing. Capt. Dunn was awarded the Distinguished Service Cross. Besides his wife and parents, he is survived by one son, John Allen.



ENGLAND, Capt. Kenneth Haynes, 24, B.S. in Agri. '42, son of Mr. and Mrs. Gilbert H. England of Campbellsburg. While at the University of Kentucky, he was an outstanding basketball player. During the war he commanded the 10th Mountain Division, the only ski troop in America. In December of 1944 he left for duty in Italy. He led the division in taking Mt. Belvedere from the Nazis, for which he won the Bronze Star. In the final campaign in Italy he died of wounds received while crossing a mine field on April 14, 1945. Besides the Bronze Star he had been awarded the Silver Star. An athletic field in Italy was named England Field.

GARLAND, Capt. Laurence Joseph, Jr., 28, A.B. in Ed. '39, M.A. '41, son of Mr. and Mrs. L. J. Garland, Sr., of Lexington. A member of the University of Kentucky football and basketball teams, he remained at the University after his graduation to become an assistant in the psychology department while obtaining his Master's degree. Before entering the Army Air Corps, he was resident manager of an N.Y.A. project near Ft. Knox. Capt. Garland served in Saipan and later Iwo Jima, where he was stationed as a pilot of a P-61 night-fighter plane and a division leader of his squadron. He was killed in action near Iwo Jima July 31, 1945.



Gholson



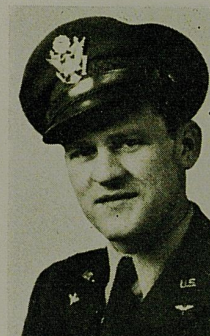
Goforth



Hillenmeyer



Johnson



King

'K' MEN WHO DIED IN WORLD WAR II

GHOLSON, Capt. Edward Lynn, 25, Com. A&S 1937-41, son of Charles D. Gholson of Paducah and the late Ruth Lynn Rudolph Gholson, and husband of Mrs. Helyne Morrow Gholson of Roswell, N. M. A member of the football team at U.K., he joined the Army Air Corps in October, 1940, while a senior. He was serving as an instructor of Flying Fortress pilots at the Roswell Army Air Field, N. M., at the time of his death. He was killed December 23, 1943, when his plane crashed into the Guadalupe Mountains near Carlsbad, N. M. Besides his wife and father, a daughter, Elizabeth Lynn survives.

GOFORTH, 1st Lt. James William, 30, A.B. in Ed. '38, son of Mr. and Mrs. John Goforth of Louisville and husband of Mrs. Nancy Offut Goforth of San Bernardino, Calif. One of the University of Kentucky's outstanding basketball stars, he went to Harlan county following his graduation and was teacher and coach at Alva. Lt. Goforth served with the Fourth Marine Division in the Marshall Islands campaign. After leading his company for several days after his captain was wounded, he was killed June 22, 1944, by machine gun fire during the battle of Saipan. Decorations included the Bronze Star, the Presidential Citation, and the Silver Star.

HILLENMEYER, Capt. Henry Reiling, 24, Com. 1938-42, son of Mrs. Marie Reiling Hillenmeyer and the late Walter Hillenmeyer, and husband of Mrs. Lucy Taylor Hillenmeyer of Lexington. At U.K. he was captain of the swimming team. Capt. Hillenmeyer served with the Sixth Infantry Division on Luzon. He was transferred later to Korea for occupation duty. The officer's death occurred at Kunsong, Korea, November 30, 1945, in the explosion of an ammunition dump. In his memory a new camp built there was called Camp Hillenmeyer. Besides his wife and mother, Capt. Hillenmeyer is survived by a son Henry R. Hillenmeyer, Jr.

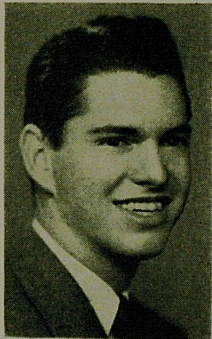
JOHNSON, S 1/c Walter Marion, Jr., 19, A&S 1943-44, son of Mr. and Mrs. Walter M. Johnson of Mt. Sterling. Johnson was a star guard on the University of Kentucky basketball team when he entered the Navy in February, 1944. After completing his training he was given sea duty as gunner's mate aboard the cruiser Indianapolis. After taking part in many of the major campaigns in the Pacific including Iwo Jima, Guam, the Philippines and Okinawa, he was reported missing when his ship was sunk by a Japanese submarine after delivering atom bomb supplies to Guam. In September Seaman Johnson was officially reported as killed in action.

KING, 2nd Lt. James Libern, 24, Agr. 1938-42, son of Mr. and Mrs. Sol H. King of Benton, and husband of Mrs. Helen Moore King of Parksville. Center on the Wildcat varsity basketball team for three years, he entered the Army Air Corps on August 20, 1942. He trained at various air fields in this country and arrived in England the first of December, 1943. Lt. King had participated in one raid over enemy territory when he was killed. He lost his life February 24, 1944, near Gotha, Germany, when the B-24 on which he was co-pilot was shot down. Four brothers and four sisters survive besides his wife and parents.

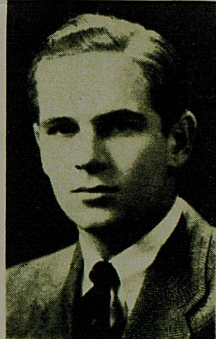




Lewis



Melloan



Meyer



Rose



Spickard

'K' MEN WHO DIED IN WORLD WAR II

LEWIS, 1st Lt. Jackson B., 25, Com. 1936-40, son of Mr. and Mrs. J. B. Lewis of South Fort Mitchell. While enrolled at U.K. he was a member of the swimming team. Before entering the Army Air Corps December 17, 1941, he was employed by Westheimer Broker in Cincinnati, Ohio. After receiving his commission and pilot's wings, he was sent to the Pacific in July, 1942. He was promoted to first lieutenant in December of that year. Lt. Jackson was reported missing in action over the Philippines on February 27, 1943, and on that date the following year was declared dead. Two sisters survive in addition to his parents.

MELLOAN, Maj. Barry Emil, 26, Com. 1937-40, grandson of Mrs. Sarah Woosley of Canmer and J. W. Woosley of Louisville. At U.K. he was a member of the fencing team. Enlisting in the Army Air Corps in 1940, he won his wings and commission at Kelly Field. While stationed at Albrook Field, Panama Canal Zone, he was awarded the Silver Star for gallantry. Later he served as squadron commander at Langley Field, Va., and in September, 1943, was sent to the Asiatic theater as a member of the 30th Pursuit Squadron. His death occurred June 15, 1944. Surviving besides his grandparents are his daughter, Barrie Lin, and his wife.



MEYER, SK 2/c Theodore Henry, 21, Com. 1938-40, son of Mr. and Mrs. Ridgely William Meyer of St. Louis, Mo. A member of the baseball team, Keys, and Kappa Sigma fraternity, he joined the Navy in October, 1941. After receiving training in St. Louis and New York, he was assigned to the Naval Supply ship, Pollux, and was stationed in Norfolk, Va., between trips. He lost his life February 18, 1942, when the Pollux was destroyed in a storm off the coast of Argentinia, Newfoundland. Besides his parents he is survived by a brother, Ridgely W. Meyer, Jr.



ROSE, T/Sgt. Conrad A., 38, A&S Ed. 1928-34, son of Mrs. Minnie A. Rose of Chicago, Ill., formerly of Evansville, Ind., and the late Harry B. Rose. A member of the University of Kentucky football team and Sigma Chi social fraternity, he later coached at Georgetown College before being employed by International Harvester Company. He joined the Army Air Corps in 1941. The ship which carried Rose to the Philippines was attacked by enemy aircraft as it lay at anchor off Leyte. Sgt. Rose, who was standing near where a plane crashed, suffered severe wounds from which he died, November 12, 1944, at a hospital on the Islands.

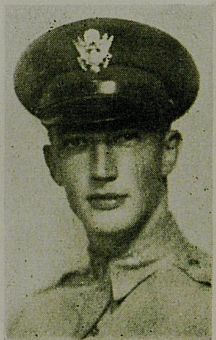
SPICKARD, Capt. Thomas W., 26, Agr. 1936-40, son of Mr. and Mrs. Mack Spickard of Princeton. A star football player at the University, he joined the Army in June, 1940, at Ft. Knox, and after training was sent with an Infantry division to the Philippines in July of 1941. He received his promotion to first lieutenant in November of that year and to captain in December, 1942. He fought until the surrender of the Philippines when he was reported missing. In August, 1943, the family received a card from him from a Japanese prison camp. On February 20, 1945, he died of illness in a prison camp at Fukuoka, Japan, on the island of Kyushu.



Stephenson



Thompson



White



Wisner



Zinn

'K' MEN WHO DIED IN WORLD WAR II

STEPHENSON, 1st Lt. William Letelle, 23, A.B. in Ed. '41, son of Dr. and Mrs. I. S. Stephenson of Lexington, and husband of Mrs. Caroline Bisbee Stephenson of Chicago. He was diving champion of the Southeastern Conference, a member of the boxing team, Pershing Rifles, Scabbard and Blade and Pi Kappa Alpha. He received his commission as Air Corps bombardier pilot at Victoria, Tex., in May, 1942. He served in Florida, Utah, Arizona, Colorado, and New Mexico. Lt. Stephenson was stationed at Topeka, Kans., when he was killed near there January 24, 1943, in the crash of a four-motored bomber on routine training flight.

THOMPSON, Capt. Arnold M., 34, B.S. in E.E. '36, son of Mrs. Nannie Byron Thompson of Owingsville and the late Stephen A. D. Thompson, and husband of Mrs. Ruth Hurt Thompson of Springfield, N.J. He was on the baseball team at U.K. In March, 1942, he was called to active duty first at Ft. Benning, then at Camp Barkley. He went overseas in March, 1944, and was stationed in England. On D-Day he landed in France and fought with Patton's Third Army. As battalion operations officer, he was directing an assault on Hochstadt, Germany, when he was killed by machine gun fire. A son, James Arnold also survives.



WHITE, 1st Lt. Walter Raymond, 26, A&S 1940-41, son of Mrs. Roberta Burchell White and the late Walter R. White, and husband of Mrs. Bertha Newberry White of Manchester. He played basketball at U.K. On December 20, 1941, Lt. White joined the Army Air Corps. After training at Kelly Field, Tex., and Grider Field, Ark., he received his wings and commission at Randolph Field, Tex., on August 5, 1942. He served in Florida and Louisiana and then was sent overseas to the North African area. Pilot of a B-26, he was shot down by the enemy over the Tyrrhenian Sea on July 25, 1943, during the invasion of Sicily.



WISNER, Capt. Oscar Evans, 28, A.B. '38, son of Mr. and Mrs. John Wisner of Danville. At U.K. he was a member of the tennis team. After transferring to the Air Corps, he received his bombardier's wings July 23, 1942. He attended special schools and served as instructor. At the time of his death, May 5, 1944, he was stationed in the Admiralty Islands, and was returning from a bombing mission over Biak, when his plane crashed into the ocean. Capt. Wisner, who was awarded the Air Medal with two Oak Leaf Clusters, is survived by a son, Evans Worth, and his wife.

ZINN, 2nd Lt. Thomas Franklin, 27, A.B. in Ed. '42, son of Mr. and Mrs. Thomas C. Zinn of Burnsville, W.Va., and husband of Mrs. Virginia Waring Zinn of Russell. At the University he was a member of Sigma Chi fraternity, "K" Club, and the football team. Immediately after graduation Lt. Zinn was called to active duty on May 29, 1942, and trained with the airborne infantry. He was sent to England in time to participate in the invasion of France. He was reported as missing in action on September 28, 1944 near Grossbeek, Holland. The War Department declared him dead officially on September 29 of the following year.

Code of Sportsmanship

We, the students of the University of Kentucky, having an abiding faith in the value of intercollegiate athletics as an instrument in promoting friendly relations among universities, do adopt this code of sportsmanship for this Memorial Coliseum:

1. Winning or losing, an athletics team of the University of Kentucky will have our continued and wholehearted support.
2. We expect our team to measure up to the highest ideals in sportsmanship, and we pledge that our conduct shall be equally as praiseworthy.
3. The visiting team and coaches, and the officials are our guests. As such, they command our respect, courtesy, and hospitality.
4. We shall in all ways abide by the regulations of the University governing the use of the Coliseum.
5. Bearing always in mind the sacrifices of those to whose memory this building is dedicated, we pledge ourselves to a standard of conduct worthy of these honored dead.
6. We call upon all who join us in the support of University of Kentucky athletics teams to join us likewise in support of this code.

The Student Government Association
of the University of Kentucky

UK Sports Records

The following season performances of various U.K. athletic teams have been compiled from records that may not, in all cases, have been complete. The University Athletics Association and the U.K. Public Relations Department will welcome any corrections or additions.

Team	Ky.	Opp.	Team	Ky.	Opp.	Team	Ky.	Opp.
Basketball			1909-10—Won 4; Lost 5			YMCA		
1904-05—Won 1; Lost 1			Kentucky Wesleyan	14	12		55	15
Cincinnati YMCA	22	43	Georgetown	31	11		302	212
Kentucky University	30	29	DePauw	11	24	1914-15—Won 7; Lost 5		
	52	72	Centre	19	87	Maryville	37	17
1905-06—Won 4; Lost 8			Georgetown	16	34	Louisville	18	14
Miami U.	10	15	Tennessee	26	5	St. Andrews	35	15
Central U.	15	14	Centre	13	31	Maryville	23	22
Central U.	17	15	Georgetown	24	23	Tennessee	21	36
Cincinnati YMCA	16	23	Centre	9	49	Tennessee	22	27
Cin. Christ Church	24	38		163	276	Vanderbilt	34	39
Georgetown	22	28	1910-11—Won 6; Lost 6			Vanderbilt	36	24
New Albany YMCA	12	29	Lexington High	29	36	Tennessee	22	13
Vernon College	34	14	Transylvania	18	23	Tennessee	20	18
Moore's Hill College	32	11	Wesleyan	19	21	St. Andrews	25	50
Cincinnati YMCA	17	54	Bethany, W.Va.	24	11	Louisville	15	26
U. of Cincinnati	9	38	Ohio Wesleyan	19	37		308	301
Miami	19	29	Otterbein	27	41	1915-16—Won 8; Lost 6		
	227	308	Christ Church	21	32	Cincinnati	39	24
1906-07—Won 2; Lost 4			Georgetown	47	22	Georgetown	29	22
Lexington YMCA	17	25	Butler	21	16	Georgetown	30	22
Georgetown	16	15	Transylvania	30	25	Vanderbilt	25	39
Central U.	22	9		304	308	Vanderbilt	20	23
Central U.	23	25	1911-12—Won 9; Lost 0			Louisville	22	28
Georgetown	8	29	Georgetown	38	12	Centre	38	5
Central U.	13	15	Central	32	13	Cincinnati	34	10
	99	118	Miami	31	14	Louisville	32	24
1907-08—Won 5; Lost 6			Central	32	10	Tennessee	17	28
Lexington YMCA	19	29	Tennessee	27	15	Maryville	36	25
Kentucky University	20	15	YMCA	32	20	Centre	38	14
Central University	21	32	Vanderbilt	28	17	Marietta	22	27
Kentucky University	20	15	Vanderbilt	22	18	Marietta	23	27
Louisville Coliseum	29	28	Georgetown	19	18		405	318
Georgetown	22	30		261	137	1916-17—Won 4; Lost 6		
Central University	31	20	1912-13—Won 6; Lost 3			Centre	31	21
Lexington YMCA	19	23	YMCA	25	27	Georgetown	19	22
Louisville Coliseum	18	30	Cincinnati	20	18	Rose Polytechnic	33	12
Georgetown	18	13	Marietta	42	14	Tennessee	20	23
Central University	10	29	Louisville	34	10	Tennessee	19	22
	227	264	Vanderbilt	17	24	Centre	24	28
1908-09—Won 4; Lost 4			Vanderbilt	42	27	Georgetown	32	18
Advent Memorial Club	27	41	Miami	24	15	Cumberland	48	20
(Cinn.)	25	39	Christ Church	19	30	Tennessee	26	27
Cincinnati U.	25	39	Central	20	18	Tennessee	10	30
Central U.	24	23		243	183		262	223
Central U.	20	36	1913-14—Won 9; Lost 2			1917-18—Won 9; Lost 2; Tied 1		
Georgetown	45	32	Louisville YMCA	30	21	Wesleyan	23	13
Georgetown	48	19	Ashland YMCA	28	15	Centre	21	29
Cincinnati	28	23	Marshall	46	6	Georgetown	22	18
Central U.	20	26	Virginia University	23	39	Tennessee	33	26
	237	239	Washington & Lee	—	—	Tennessee	40	12
			(Cancelled)	—	—	Wesleyan	21	21
			VMI	18	32	Georgetown	25	16
			Louisville	22	17	Centre	22	20
			Tennessee	21	14	Cumberland	42	21
			Tennessee	20	18	Tennessee	29	18
			Cincinnati	20	18	Tennessee	32	20
			Marietta	19	17	Centre	12	22
							322	236

(Continued on Next Page)

Team	Ky.	Opp.	Team	Ky.	Opp.	Team	Ky.	Opp.
(BASKETBALL — Cont.)								
1918-19—Won 6; Lost 8			1923-24—Won 13; Lost 2			1927-28—Won 12; Lost 6		
Wesleyan	46	5	Vanderbilt	33	13	Clemson	33	17
Georgetown	30	32	Mexico YMCA	25	14	Miami	31	36
Centre	30	38	Georgetown	32	24	Berea	37	16
Cincinnati	18	28	Miss. A&M	16	17	Centre	36	25
Chattanooga	28	25	Sewanee	50	15	Vanderbilt	43	23
Tennessee	22	40	Tennessee	14	20	Virginia	31	28
Cumberland	22	21	Chattanooga	24	23	Navy	26	32
Vanderbilt	26	36	West Virginia	24	21	Maryland	7	37
Georgetown	18	22	Centre	27	18	Tennessee	48	18
Cincinnati	34	21	Georgetown	39	35	Washington & Lee	34	28
Wesleyan	18	13	Clemson	38	13	Indiana	29	48
Centre	10	21	Virginia	29	16	Vanderbilt	54	29
Tennessee	30	14	VPI	36	14	Tennessee	43	16
Miami	14	40	Centre	38	24	Georgia Tech	31	35
			Georgia Tech	33	27	Centre	30	20
	346	322		458	294		513	408
1919-20—Won 5; Lost 7			1924-25—Won 13; Lost 8			TOURNAMENT		
Cincinnati	11	13	Cincinnati	28	23	South Carolina	56	40
Maryville	27	16	Indiana	18	20	Georgia	33	16
Georgetown	25	14	Michigan	11	21	Mississippi	28	44
Tennessee	24	29	Cincinnati	20	24		630	508
Tennessee	26	27	Illinois	26	36	1928-29—Won 12; Lost 5		
Centre	15	44	Wabash	11	57	Eastern Normal	35	10
Georgetown	28	16	Mississippi	26	23	Miami	43	42
Kentucky Wesleyan	43	13	Georgetown	25	17	North Carolina	15	25
Cumberland	21	30	Centre	33	26	Notre Dame	19	16
Tennessee	25	28	Washington & Lee	28	22	Georgia Tech	19	33
Tennessee	36	25	West Virginia	29	19	Tennessee	35	29
Centre	18	20	Alabama	15	24	Tennessee	27	22
	299	275	Georgia Tech	18	16	Alabama	26	27
1920-21—Won 13; Lost 1			TOURNAMENT			Mississippi A&M	25	23
Wesleyan	38	13	Mississippi	29	22	Mississippi A&M	32	14
Cumberland	37	21	Georgetown	36	21	Tulane	22	34
Georgetown	38	23	Tennessee	26	21	Washington & Lee	31	30
Chattanooga	42	10	Centre	39	10	Centre	47	11
Cincinnati	26	19		476	452	Mississippi	35	30
Auburn	40	25				Mississippi	32	26
Centre	27	29					443	372
Georgetown	56	11				TOURNAMENT		
Centre	20	13	Mississippi A&M	31	26	Tulane	29	15
Vanderbilt	39	18	Georgia	31	32	Georgia	24	26
Tulane	50	28		538	510		496	413
Mercer	49	24	1925-26—Won 13; Lost 2			1929-30—Won 16; Lost 3		
Miss. A & M	28	13	DePauw	29	38	Georgetown	46	9
Georgia	20	19	Indiana	23	34	Miami	35	20
	510	266	Berea	37	23	Berea	29	26
1921-22—Won 10; Lost 6			Georgetown	36	21	Clemson	31	15
Georgetown	17	26	Georgia Tech	25	24	Creighton	27	28
Louisville	38	14	Centre	45	25	Creighton	25	21
Vanderbilt	12	22	Georgetown	25	20	Tennessee	23	20
Louisville	29	22	Alabama	27	16	Mississippi A&M	43	17
Miss. A&M	28	21	Centre	46	19	Mississippi A&M	20	14
Marshall	34	12	Auburn	35	26	Tennessee	24	29
Centre	26	17	Washington & Lee	44	34	Georgia	22	21
Georgetown	26	17	Tennessee	51	17	Clemson	34	20
Washington & Lee	21	20	Georgia	22	18	Georgia Tech	39	19
VMI	32	37	Tennessee	27	21	Georgia	36	23
Georgetown	23	28	Vanderbilt	30	20	Ky. Wesleyan	32	20
University of Virginia	30	32		473	318	Washington & Lee	28	26
Clemson	38	14	1926-27—Won 2; Lost 13			Maryland	26	21
Centre	40	23	Cincinnati	10	48	Sewanee	44	22
Georgetown	41	21	Indiana	19	38	Duke	35	37
Mercer	22	35	Cincinnati	23	51		599	408
	457	361	Princeton	26	30	1930-31—Won 15; Lost 3		
1922-23—Won 3; Lost 10			Florida	38	32	Georgetown	67	19
Georgetown	24	13	Ky. Wesleyan	25	31	Marshall	42	26
Tennessee	26	30	Vanderbilt	32	48	Berea	41	25
Chattanooga	25	18	Tennessee	14	19	Clemson	33	21
Alabama	35	45	Georgia Tech	16	48	Tennessee	31	23
Centre	14	21	Centre	27	25	Chattanooga	55	18
Georgia	19	23	Georgetown	19	26	Vanderbilt	42	37
Cincinnati	24	33	Washington & Lee	34	36	Tennessee	36	32
Centenary	21	28	West Virginia	26	44	Washington & Lee	23	18
Tennessee	23	28	Mississippi	17	37	Georgia Tech	38	34
Centre	10	17	Tennessee	21	30	Georgia	16	25
Clemson	17	30		347	543	Clemson	26	15
Georgetown	21	48				(Continued on Next Page)		
Sewanee	30	14						
	289	348						

Team	Ky.	Opp.
(BASKETBALL — Cont.)		
Georgia Tech	35	15
Vanderbilt	42	23
	527	345

TOURNAMENT		
North Carolina St.	33	28
Duke	35	30
Florida	56	35
Maryland (Finals)	25	27
	676	465

1931-32—Won 15; Lost 2		
Georgetown	66	24
Carnegie Tech	36	34
Berea	52	27
Marshall	46	16
Clemson	43	24
Clemson	30	17
Sewanee	30	20
Tennessee	29	28
Chattanooga	51	17
Washington & Lee	48	28
Vanderbilt	61	37
Duke	37	30
Alabama	50	22
Tennessee	41	27
Vanderbilt	31	32
	651	383

TOURNAMENT		
Tulane	50	30
North Carolina	42	43
	743	456

1932-33—Won 20; Lost 3		
Georgetown	62	21
Marshall	57	23
Tulane	53	17
Tulane	42	11
Chicago	58	26
Ohio State	30	46
Creighton	32	26
Creighton	22	34
South Carolina	44	36
Tennessee	42	21
Clemson	67	18
Tennessee	44	23
Vanderbilt	40	29
Clemson	42	32
South Carolina	38	44
Mexico	81	22
Georgia Tech	45	22
Alabama	35	31
Vanderbilt	45	28
	879	510

SEC TOURNAMENT		
Univ. of Miss.	49	31
Florida	48	24
L.S.U.	51	38
Miss. State	46	27
	1,073	630

1933-34—Won 15; Lost 1		
Georgetown	41	12
Marshall	48	25
Cincinnati	31	25
Tulane	32	22
Tulane	42	29
Sewanee	55	16
Tennessee	44	23
Chattanooga	47	20
Tennessee	53	26
Alabama	33	28
Vanderbilt	48	26
Alabama	26	21
Georgia Tech	49	25
Sewanee	60	15
Vanderbilt	46	30
	655	343

Team	Ky.	Opp.
SEC TOURNAMENT		
Florida	32	38
	687	381

1934-35—Won 19; Lost 2		
Alumni	61	10
Oglethorpe	81	12
Tulane	38	9
Tulane	52	12
Chicago	42	16
N.Y.U.	22	23
Tulane	63	22
Tulane	55	12
Chattanooga	66	19
Tennessee	48	21
Alabama	33	26
Vanderbilt	58	22
Xavier	40	27
Georgia Tech	57	30
Alabama	25	16
Michigan State	26	32
Tennessee	38	36
Creighton	63	42
Creighton	24	13
Vanderbilt	53	19
Xavier	46	29
	991	448

1935-36—Won 15; Lost 6		
Georgetown	42	17
Berea	58	30
Pittsburgh	35	17
New York University	28	41
Xavier	36	32
Tulane	49	24
Tulane	39	21
Tulane	27	19
Michigan State	40	31
Tennessee	23	32
Vanderbilt	32	30
Alabama	40	34
Alabama	20	41
Notre Dame	39	28
Butler	28	39
Tennessee	49	40
Xavier	68	38
Creighton	29	31
Creighton	61	41
	743	586

SEC TOURNAMENT		
Miss. State	41	39
Tennessee	28	39
	812	644

1936-37—Won 17; Lost 5		
Georgetown	46	21
Berea	70	26
Xavier	34	28
Centenary	37	19
Michigan State	28	21
Notre Dame	28	41
Creighton	59	36
Michigan State	23	24
Akron Univ.	32	22
Tennessee	43	26
Vanderbilt	41	26
Alabama	38	27
Tulane	28	35
Tulane	28	25
Mexico Univ.	60	30
Alabama	31	34
Tennessee	24	26
Vanderbilt	51	19
Xavier	23	15
	724	501

SEC TOURNAMENT		
L.S.U.	57	37
Georgia Tech	40	30
Tennessee	39	25
	860	593

Team	Ky.	Opp.
1937-38—Won 13; Lost 5		
Berea	67	33
Cincinnati	38	19
Centenary	35	25
Pittsburgh (Sugar Bowl)	40	29
Michigan State	37	42
Detroit	28	34
Notre Dame	37	47
Tennessee	52	27
Vanderbilt	42	19
Alabama	57	31
Xavier	32	39
Michigan State	44	27
Alabama	27	21
Marquette	35	33
Xavier	45	29
Vanderbilt	48	24
Tennessee	29	26
	693	505

SEC TOURNAMENT (Baton Rouge)		
Tulane	34	36
	727	541

1938-39—Won 16; Lost 4		
Georgetown	39	19
Ky. Wesleyan	57	18
Cincinnati	44	27
Washington & Lee	67	47
Long Island	34	52
St. Joseph	41	30
Notre Dame	37	42
Tennessee	29	30
Alabama	38	41
Vanderbilt	51	37
Marquette	37	31
Xavier	41	31
Alabama	45	27
Mississippi State	39	28
Tennessee	36	34
Xavier	43	23
Vanderbilt	52	27
	730	544

SEC TOURNAMENT		
Ole Miss.	49	30
L.S.U.	53	34
Tennessee	46	38
	878	646

1939-40—Won 15; Lost 6		
Berea	74	24
Cincinnati	30	39
Clemson	55	31
Ohio St. (Sugar Bowl)	36	30
Kansas State	53	26
Xavier	42	41
West Virginia	47	38
Notre Dame	47	52
Tennessee	35	26
Alabama	32	36
Vanderbilt	32	40
Marquette	51	45
Alabama	46	18
Xavier	37	29
Mississippi St.	45	37
Tennessee	23	27
Georgia Tech	39	44
Vanderbilt	43	38
	767	621

SEC TOURNAMENT		
Vanderbilt	44	31
Tennessee	30	29
Georgia	51	43
	892	724

1940-41—Won 17; Lost 8		
Alumni	62	25
West Virginia	46	34
Maryville	53	14

(Continued on Next Page)

Team	Ky.	Opp.	Team	Ky.	Opp.	Team	Ky.	Opp.
(BASKETBALL — Cont.)			Great Lakes	39	53	Cincinnati	67	31
Nebraska	39	40		935	750	Arkansas	67	42
Creighton	45	54	SEC TOURNAMENT			Oklahoma	43	33
Kansas State	28	25	Tulane	48	31	St. John's	73	59
Centenary	70	18	Georgia	59	30	Temple	45	53
Indiana (Sugar Bowl)	45	48	Miss. State	52	43	Ohio U.	57	48
Notre Dame	47	48	Tennessee	30	33	Fort Benning	81	25
Xavier	48	43		1,124	887	Michigan State	55	44
West Virginia	43	56	1943-44—Won 19; Lost 2			Xavier	62	32
Tennessee	22	32	Fort Knox	51	18	Tennessee	50	32
Georgia Tech	47	37	Berea (Naval V-12)	54	40	Georgia Tech	68	43
Xavier	44	49	Indiana	66	41	Notre Dame	47	56
Vanderbilt	51	50	Ohio State	40	28	Georgia Tech	54	26
Alabama	38	36	Cincinnati	58	30	Michigan State	59	51
Alabama	46	38	Illinois	41	43	Vanderbilt	59	37
Mississippi	60	41	Carnegie Tech	61	14	Vanderbilt	64	31
Tennessee	37	28	St. John's	44	38	Tennessee	54	34
Georgia Tech	60	41	Notre Dame	55	54	Ohio U.	60	52
Vanderbilt	58	31	Wright Field (Dayton, O)	61	28	Xavier	83	40
	989	788	Fort Knox A.R.C.	76	48		1,329	879
SEC TOURNAMENT			DePauw	38	35	SEC TOURNAMENT		
Mississippi	62	52	Illinois	51	40	Auburn	69	24
Tulane	59	30	Cincinnati	38	35	Florida	69	32
Alabama	39	37	Ohio Univ.	51	35	Alabama	59	30
Tennessee	33	36		785	527	L.S.U.	59	36
	1,182	943	SEC TOURNAMENT				1585	1001
1941-42—Won 19; Lost 6			Georgia	57	29	POST-SEASON GAME		
Miami	35	21	Louisiana State	55	28	Temple	54	43
Ohio State	41	43	Tulane	62	46		1639	1044
Nebraska	42	27		959	630	NATIONAL INVITATION		
South Carolina	64	25	NATIONAL INVITATION TOURNAMENT			Arizona	77	53
Texas A&M	49	29	Utah	46	38	West Virginia	59	51
Washington & Lee	62	32	St. John's	45	48	Rhode Island St.	46	45
Xavier	40	39	Okla. A&M (Consolation)	45	29		1821	1193
Tennessee	40	46		1,095	745	1946-47—Won 34; Lost 3		
Georgia	51	26	1944-45—Won 22; Lost 4			Indiana Central	78	36
Georgia Tech	63	53	Fort Knox	56	23	Tulane	64	35
Mexico Univ.	56	26	Berea	56	32	Fort Knox	68	31
Georgia	55	38	Cincinnati	66	24	Cincinnati	80	49
Alabama	35	41	Indiana	61	43	Idaho	65	35
Notre Dame	43	46	*Ohio State	53	48	DePaul	65	45
Alabama	50	34	Wyoming	50	46	Texas A&M	83	18
Tennessee	36	33	Temple	45	44	Miami U. (Ohio)	62	49
Georgia Tech	57	51	*Long Island U.	62	52	St. Johns	70	50
Xavier	44	36	Ohio U.	59	46	Baylor	75	34
	863	646	Arkansas State	75	6	Wabash	96	34
SEC TOURNAMENT			Michigan State	66	35	Okla. A&M (Sugar Bowl)	31	37
Florida	42	36	Tennessee	34	35	Ohio U.	46	36
Mississippi	59	32	Georgia Tech	64	58	Dayton U.	70	29
Auburn	40	31	*Notre Dame	58	59	Vanderbilt	82	30
Alabama	36	34	Georgia	73	37	Tennessee	54	39
N.C.A.A. TOURNAMENT			Georgia Tech	51	32	Georgia Tech	70	47
Illinois	46	44	Georgia Tech	50	66	Georgia	84	45
Dartmouth	28	47	Tennessee	40	34	Xavier	71	34
	1,114	870	Ohio U.	61	38	Michigan State	86	36
POST-SEASON GAME			Cincinnati	65	35	Notre Dame	60	30
Great Lakes	47	58		1,145	793	Alabama	48	37
	1,161	928	SEC TOURNAMENT			DePaul	47	53
1942-43—Won 18; Lost 5			Florida	57	35	Georgia	81	40
Cincinnati	61	39	L.S.U.	68	37	Tennessee	61	46
Washington Univ.	45	38	Alabama	52	41	Alabama	63	33
Indiana	52	58	Tennessee	39	35	Xavier	58	31
Ohio State	40	45		1,361	941	Vanderbilt	84	41
(Last Tome Floor Loss-Jan. 2, 1943)			N.C.A.A. TOURNAMENT			Georgia Tech	83	46
Fort Knox	64	30	Ohio State	37	45		1985	1096
Xavier	43	38	Tufts (Consolation)	66	56	SEC TOURNAMENT		
Tennessee	30	28		1,464	1,042	Vanderbilt	98	29
Georgia	60	28	* Denotes overtime games.			Auburn	84	18
Georgia Tech	38	36	1945-46—Won 28; Lost 2			Georgia Tech	75	53
Notre Dame	60	55	Fort Knox	59	36	Tulane	55	38
Vanderbilt	38	37	Western Ontario	51	42		2297	1234
Alabama	41	32	Western Ontario	71	28	POST-SEASON GAME		
Vanderbilt	54	43				Temple	68	29
Alabama	67	41					2365	1263
Xavier	48	36				(Continued on Next Page)		
Tennessee	53	29						
Georgia Tech	58	31						
DePaul	44	53						

Team	Ky.	Opp.
(BASKETBALL — Cont.)		
NATIONAL INVITATION		
Long Island U.	63	62
North Carolina St.	60	42
Utah	45	49
	2536	1416

Team	Ky.	Opp.
1947-48—Won 36; Lost 3		
Indiana Central	80	41
Fort Knox	82	41
Tulsa University	72	18
Tulsa University	71	22
DePaul University	74	50
Univ. of Cincinnati	67	31
Xavier University	79	37
Temple University	59	60
St. John's	52	40
Creighton	65	23
Western Ontario	98	41
Miami (Ohio)	67	53
Michigan State	47	45
Ohio University	79	57
Tennessee	65	54
Georgia Tech	71	56
Georgia	88	51
Univ. of Cincinnati	70	43
DePaul	68	51
Notre Dame	55	64
Alabama	41	31
Washington Univ.	69	39
Vanderbilt	82	51
Tennessee	69	42
Alabama	63	33
Vanderbilt	79	43
Georgia Tech	78	54
Temple	58	38
Xavier	59	37

Team	Ky.	Opp.
SEC TOURNAMENT		
Florida	87	31
L.S.U.	63	47
Tennessee	70	47
Georgia Tech	54	43
	2279	1414

Team	Ky.	Opp.
N.C.A.A. TOURNAMENT		
Columbia	76	53
Holy Cross	60	52
Baylor	58	42
	2473	1561

Team	Ky.	Opp.
OLYMPIC TRIALS TOURNAMENT		
Louisville	91	57
Baylor*	77	59
Phillips Oilers	49	53
	2690	1730

Team	Ky.	Opp.
OLYMPIC TEAM EXHIBITION GAMES		
Kentucky vs. Phillips Oilers		
6-30-48—Tulsa, Okla.	52	60
7-2-48—Kansas City, Mo.	70	69
7-9-48—Lexington, Ky.	50	56
**OLYMPIC GAMES		
Switzerland	81	21
Czechoslovakia	53	28
Argentina	59	57
Egypt	66	28
Peru	61	33
Uruguay	63	28
Mexico	71	40
France	65	21

* Denotes championship of collegiate bracket
 ** Kentucky participated as part of U.S. basketball entry

Team	Ky.	Opp.
1948-49—Won 32; Lost 2		
Indiana Central	74	38
DePaul Univ.	67	36

Team	Ky.	Opp.
Tulsa Univ.	81	27
Arkansas Univ.	76	39
Holy Cross	51	48
St. John's	57	30
Tulane (Sugar Bowl)	78	47
St. Louis (Sugar Bowl)	40	42
St. Louis	40	42
Bowling Green	63	61
Tennessee	66	51
Georgia Tech	56	45
DePaul Univ.	56	45
Notre Dame	62	38
Vanderbilt	72	50
Alabama	56	40
Mississippi	75	45
Bradley Univ.	62	52
Tennessee	71	56
Xavier	96	50
Alabama	74	32
Mississippi	85	31
Georgia Tech	78	32
Georgia	95	40
Xavier	51	40
Vanderbilt	70	37
	1763	1099

Team	Ky.	Opp.
SEC TOURNAMENT		
Florida	73	36
Auburn	70	39
Tennessee	83	44
(Championship)		
Tulane	68	52
	2057	1270

Team	Ky.	Opp.
NATIONAL INVITATION TOURNAMENT		
(Madison Square Gdn.—New York)		
Loyola of Chicago	56	67
	2113	1327

Team	Ky.	Opp.
NCAA TOURNAMENT EASTERN DIVISION		
(Madison Square Gdn.—New York)		
Villanova	85	72
(Championship)		
Illinois	76	47

Team	Ky.	Opp.
NCAA FINALS (Seattle, Washington)		
Oklahoma A&M	43	36
	2320	1402

Team	Ky.	Opp.
1949-50—Won 25; Lost 5		
Indiana Central	84	61
Western Ontario	90	18
St. John's	58	69
DePaul	49	47
Purdue	60	54

Team	Ky.	Opp.
Sugar Bowl Tournament		
Villanova (Overtime)	57	56
Bradley (Championship)	71	66
Arkansas	57	53
Mississippi State	87	55
North Carolina U.	83	44
Tennessee	53	66
Georgia Tech	61	47
Georgia	60	71
DePaul	86	53
Notre Dame	51	64
Xavier	58	47
Georgia	88	56
Vanderbilt	58	54
Alabama	66	64
Mississippi U.	61	55
Tennessee	79	52
Alabama	77	57
Mississippi U.	90	50
Georgia Tech	97	62
Xavier	58	53
Vanderbilt	70	66

Team	Ky.	Opp.
SEC TOURNAMENT		
Miss. State	56	46
Georgia	79	63

Team	Ky.	Opp.
Tennessee	95	58
NATIONAL INVITATION TOURNAMENT		
City College of N.Y.	50	89
	2089	1696

Football

Team	Ky.	Opp.
1881—Won 1, Lost 2		
Transylvania	7 1/4	1
Transylvania	1	2
Transylvania	2 1/4	3 3/4
For method of scoring, see footnote A.		

1882-1889—No varsity teams.

Team	Ky.	Opp.
1890-'91—Won 1, Lost 0.		
Georgetown	8	2

Team	Ky.	Opp.
1891—Won 0, Lost 1.		
Transylvania	-	-
(Called after one play because of injury to Dwight Harrison of Transylvania.)		
Centre College	0	10

Team	Ky.	Opp.
1892—Won 2, Lost 3, Tied 1.		
Transylvania	0	0
Central U.	6	8
Louisville A.C.	14	10
V.M.I.	0	34
Central U.	6	10
Transylvania	10	4

Team	Ky.	Opp.
1893—Won 5, Lost 2, Tied 1.		
Georgetown	80	0
Tennessee	56	0
Centre College	4	6
Transylvania	28	0
(Exhibition game—arranged after cancellation of Cincinnati YMCA on account of rain.)		
Central U.	36	48
Cincinnati YMCA	14	4
Transylvania	38	28
Indiana	24	24

Team	Ky.	Opp.
1894—Won 5, Lost 1.		
Miami U.	28	6
Jeffersonville A.C.	66	0
Georgetown	40	6
Transylvania	44	0
Centre College	0	67
Central U.	38	10

Team	Ky.	Opp.
1895—Won 4, Lost 5.		
Frankfort A.C.	10	0
Purdue	0	32
DePaul	0	18
Centre College	6	0
Georgetown	0	10
Transylvania	26	0
Ohio State	6	8
Lexington A.C.	16	10
Centre College	0	16

Team	Ky.	Opp.
1896—Won 3, Lost 6.		
Lexington A.C.	0	10
Vanderbilt	0	6
Central U.	0	5
Catlettsburg A.C.	4	6
Transylvania	36	6
Centre College	0	32
Central U.	62	0
Centre College	0	44
Georgetown	16	0
Lexington A.C.	4	30

(Continued on Next Page)

Team	Ky.	Opp.	Team	Ky.	Opp.	Team	Ky.	Opp.
(FOOTBALL — Cont.)								
1897—Won 4, Lost 4.								
Transylvania	8	6	Central U.	40	0	Central U.	8	5
Ky. Wesleyan	0	4	Berea College	42	0	Tennessee	12	0
Georgetown	32	0	Bethany	6	0	1912—Won 7, Lost 2.		
Georgetown	24	4	Cincinnati	0	11	Maryville College	34	0
Vanderbilt	0	50	K.M.I.	11	0	Marshall College	13	6
Central U.	0	18	Georgetown	35	0	Miami U.	8	13
Georgetown	12	4	Central U.	81	0	Cincinnati	19	13
Centre College	0	36	Transylvania	21	4	U. of Louisville	41	0
1898—Won 7, Lost 0.								
Transylvania	18	0	1905—Won 6, Lost 3, Tied 1.			V.M.I.	2	3
Georgetown	28	0	Cynthiana	52	0	Hanover College	64	0
Co. H. of 8th Mass.	59	0	Catlettsburg	23	0	Tennessee	13	6
Louisville A.C.	17	0	Indiana	0	29	Cincinnati YMCA	56	0
Centre College	6	0	K.M.I.	12	4	1913—Won 6, Lost 2.		
160th Indiana	17	0	Berea College	46	0	Butler College	21	7
Newcastle A.C.	36	0	Marshall College	53	0	Illinois	0	21
Central U.	-	-	U. of W.Va.	0	45	Ohio Northern U.	21	0
Cancelled by Central U.			Cumberland U.	12	0	Cincinnati	27	7
			(Forfeit-See Footnote B.)	-	-	Earlham	28	10
			St. Louis	0	82	Wilmington	33	0
			Central U.	11	11	U. of Louisville	20	0
			1906—Won 4, Lost 3.			Tennessee	7	13
			Vanderbilt	0	28	1914—Won 5, Lost 3.		
			Eminence A.C.	48	0	Wilmington Col.	87	0
			K.M.I.	16	11	Maryville Col.	80	0
			Marietta College	0	16	Morris-Harvey (Cancelled)	-	-
			Tennessee	21	0	Mississippi A&M	19	13
			Georgetown	19	0	Earlham College	81	3
			Centre College	6	12	Cincinnati	7	14
			1907—Won 8, Lost 1, Tied 1.			Purdue	6	40
			Ky. Reserves	17	0	Louisville	42	0
			Manual	30	0	Tennessee	6	23
			Vanderbilt	0	35	1915—Won 6, Lost 1, Tied 1.		
			Morris-Harvey	29	0	Butler College	33	0
			Hanover	40	0	Earlham College	54	13
			Tennessee	0	0	Miss. A&M	0	12
			Maryville	6	0	Sewanee	7	7
			Georgetown	38	0	Cincinnati	27	6
			Centre College	11	0	Louisville U.	15	0
			Transylvania	5	0	Purdue	7	0
			1908—Won 4, Lost 3.			Tennessee	6	0
			Berea College	18	0	1916—Won 4, Lost 1, Tied 2.		
			Tennessee	0	5	Butler College	39	3
			Maryville	18	0	Centre College	68	0
			Sewanee	0	12	Vanderbilt	0	45
			Michigan	0	62	Sewanee	0	0
			Rose Polytechnic	12	0	Cincinnati	32	0
			Centre College	40	0	Louisville U.	-	-
			1909—Won 9, Lost 1.			(Cancelled by Louisville.)		
			Ky. Wesleyan	18	0	Miss. A&M	13	3
			Berea College	28	0	Tennessee	0	0
			U. of Illinois	6	2	1917—Won 3, Lost 5, Tied 1.		
			Tennessee	17	0	Butler	33	0
			N.C. A&M	6	15	Maryville	19	0
			Rose Polytechnic	43	0	Miami U.	0	0
			Georgetown	22	6	Vanderbilt	0	5
			St. Mary's	29	0	Sewanee	0	7
			Transylvania	77	0	Centre College	0	3
			Central U.	15	6	Miss. A&M	0	14
			1910—Won 7, Lost 2.			Alabama	0	27
			Ohio U.	12	0	Florida	52	0
			Maryville	12	0	1918—Won 2, Lost 1.		
			U. of N.C.	11	0	Indiana	24	7
			Ky. Wesleyan	42	0	Vanderbilt	0	33
			Georgetown	37	0	Georgetown	21	3
			Tulane U.	10	3	Centre College	-	-
			Tennessee	10	0	(Cancelled because of 'flu epidemic in Lexington.)		
			St. Louis U.	0	9	1919—Won 3, Lost 4, Tied 1.		
			Central U.	6	12	Georgetown	12	0
			1911—Won 7, Lost 3.			Indiana U.	0	24
			Maryville	13	0	Ohio State	0	49
			Morris-Harvey	12	0	Sewanee	6	0
			Miami	12	0	Vanderbilt	0	0
			Lex. High School	17	0	(Continued on Next Page)		
			Cincinnati	0	6			
			Georgetown	18	0			
			Vanderbilt	0	18			
			Transylvania	5	12			

Team	Ky.	Opp.	Team	Ky.	Opp.	Team	Ky.	Opp.			
(FOOTBALL — Cont.)											
Cincinnati	0	7	Indiana	0	21	1935—Won 5, Lost 4.					
Centre College	0	56	Ky. Wesleyan	13	7	Maryville College	60	0			
Tennessee	13	0	Florida	6	27	Xavier	21	7			
1920—Won 3, Lost 4, Tied 1.											
Maryville College	68	0	Washington & Lee	0	25	Ohio State	6	19			
S.P.U.	62	0	Vanderbilt	6	34	Georgia Tech	25	6			
Miami	0	14	Alabama	6	21	Auburn	0	23			
Sewanee	6	6	V.M.I.	25	0	Alabama	0	13			
Vanderbilt	0	20	Centre College	53	0	Florida	15	6			
Cincinnati	7	6	Tennessee	0	20	Tulane	13	20			
Centre College	0	49	1928—Won 4, Lost 3, Tied 1.								
Tennessee	7	14	Carson-Newman	6	0	1936—Won 6, Lost 4.					
1921—Won 4, Lost 3, Tied 1.											
Ky. Wesleyan	68	0	Washington & Lee	6	0	Maryville College	54	3			
Marshall	28	0	Northwestern	0	7	Xavier	21	0			
Vanderbilt	14	21	Centre College	8	0	V.M.I.	38	0			
Georgetown	34	0	Vanderbilt	7	14	Georgia Tech	0	34			
Sewanee	0	6	Alabama	0	14	Washington & Lee	39	7			
Centre College	0	55	V.M.I.	19	6	Florida	7	0			
V.M.I.	14	7	Tennessee	0	0	Alabama	0	14			
Tennessee	0	0	1929—Won 6, Lost 1, Tied 1.								
1922—Won 6, Lost 3.											
Marshall	16	0	Maryville College	40	0	Maryville College	54	3			
Cincinnati	15	0	Washington & Lee	20	0	Xavier	21	0			
Louisville	73	0	Carson-Newman	58	0	Georgia Tech	0	32			
Georgetown	40	6	Centre College	33	0	Washington & Lee	41	6			
Sewanee	7	0	Clemson	40	6	Manhattan	19	0			
Centre College	3	27	Alabama	13	24	Alabama	0	41			
Vanderbilt	0	9	V.M.I.	23	12	South Carolina	27	7			
Alabama	6	0	Tennessee	6	6	Boston College	0	13			
Tennessee	7	14	1930—Won 5, Lost 3.								
1923—Won 4, Lost 3, Tied 2.											
Marshall College	41	0	Sewanee	37	0	Maryville College	57	0			
Cincinnati	14	0	Maryville College	57	0	Washington & Lee	33	14			
Washington & Lee	6	6	Washington & Lee	33	14	Virginia	47	0			
Maryville College	28	0	Virginia	47	0	Alabama	0	19			
Georgetown	35	0	Alabama	0	19	Duke	7	14			
Centre College	0	10	V.M.I.	26	0	V.M.I.	26	0			
Alabama	8	16	Tennessee	0	8	Tennessee	0	8			
Georgia Tech	3	3	1931—Won 5, Lost 2, Tied 2.								
Tennessee	0	18	Maryville College	19	0	Maryville College	19	0			
1924—Won 4, Lost 5.											
Louisville	29	0	Washington & Lee	45	0	Washington & Lee	45	0			
Georgetown	42	0	Maryland	6	6	Maryland	6	6			
Washington & Lee	7	10	V.P.I.	20	6	V.P.I.	20	6			
Sewanee	7	0	Alabama	7	9	Alabama	7	9			
Centre College	0	7	Duke	0	7	Duke	0	7			
Alabama	7	42	V.M.I.	20	12	V.M.I.	20	12			
V.M.I.	3	10	Tennessee	6	6	Tennessee	6	6			
Tennessee	27	6	Florida	7	2	Florida	7	2			
W.Va. Wes.	7	24	1932—Won 4, Lost 5.								
1925—Won 6, Lost 3.											
Maryville College	13	6	V.M.I.	23	0	V.M.I.	23	0			
Chicago	0	9	Sewanee	18	0	Sewanee	18	0			
Clemson College	19	6	Georgia Tech	12	6	Georgia Tech	12	6			
Washington & Lee	0	25	Washington & Lee	53	7	Washington & Lee	53	7			
Sewanee	14	0	V.P.I.	0	7	V.P.I.	0	7			
Centre College	16	0	Alabama	7	12	Alabama	7	12			
Alabama	0	31	Duke	0	13	Duke	0	13			
V.M.I.	7	0	Tulane	3	6	Tulane	3	6			
Tennessee	23	20	Tennessee	0	26	Tennessee	0	26			
1926—Won 2, Lost 6, Tied 1.											
Maryville College	25	0	1933—Won 5, Lost 5.								
Indiana	6	14	Maryville College	46	2	Maryville College	46	2			
Washington & Lee	13	14	Sewanee	7	0	Sewanee	7	0			
Florida	18	13	Georgia Tech	7	6	Georgia Tech	7	6			
V.P.I.	13	13	Cincinnati	3	0	Cincinnati	3	0			
Alabama	0	14	Washington & Lee	0	7	Washington & Lee	0	7			
V.M.I.	0	7	Duke	7	14	Duke	7	14			
Centre College	0	7	Alabama	0	20	Alabama	0	20			
Tennessee	0	6	V.M.I.	21	6	V.M.I.	21	6			
1927—Won 3, Lost 6, Tied 1.											
Maryville College	6	6	Tulane	0	34	Tulane	0	34			
1934—Won 5, Lost 5.											
Indiana	6	14	Tennessee	0	27	Tennessee	0	27			
Washington & Lee	13	14	Maryville College	26	0	Maryville College	26	0			
Florida	18	13	Washington & Lee	0	7	Washington & Lee	0	7			
V.P.I.	13	13	Cincinnati	27	0	Cincinnati	27	0			
Alabama	0	14	Clemson	7	0	Clemson	7	0			
V.M.I.	0	7	N. Carolina	0	6	N. Carolina	0	6			
Centre College	0	7	Auburn	9	0	Auburn	9	0			
Tennessee	0	6	Alabama	14	34	Alabama	14	34			
1942—Won 3, Lost 6, Tied 1.											
Maryville College	6	6	Southwestern	33	0	Southwestern	33	0			
(Continued on Next Page)											

Team	Ky.	Opp.
(FOOTBALL — Cont.)		
Xavier	35	19
Washington & Lee	53	0
Vanderbilt	6	7
V.P.I.	21	21
Alabama	0	14
George Washington	27	6
Georgia Tech	7	47
W. Virginia	0	7
Tennessee	0	26

1943—No team (War Year)

1944—Won 3, Lost 6.

Mississippi	27	7
Tennessee	13	26
Michigan State	0	2
Georgia	12	13
V.M.I.	26	2
Alabama	0	41
Mississippi State	0	26
W. Virginia	40	9
Tennessee	7	21

1945—Won 2, Lost 8.

Mississippi	7	21
Cincinnati	13	7
Michigan State	6	7
Georgia	6	48
Vanderbilt	6	19
Cincinnati	7	16
Alabama	19	60
W. Virginia	19	6
Marquette	13	19
Tennessee	0	14

1946—Won 7, Lost 3.

Mississippi	20	6
Cincinnati	26	7
Xavier	70	0
Georgia	13	28
Vanderbilt	10	7
Alabama	7	21
Michigan State	39	14
Marquette	35	7
W. Virginia	13	0
Tennessee	0	7

1947—Won 8, Lost 3.

Mississippi	7	14
Cincinnati	20	0
Xavier	20	7
Georgia	26	0
Vanderbilt	14	0
Michigan State	7	6
Alabama	0	13
W. Virginia	15	6
Evansville	36	0
Tennessee	6	13
Great Lakes Bowl Game,		
Villanova	24	14

1948—Won 5, Lost 3, Tied 2.

Xavier	48	7
Mississippi	7	20
Georgia	12	35
Vanderbilt	7	26
Marquette	25	0
Cincinnati	28	7
Villanova	13	13
Florida	34	15
Tennessee	0	0
Miami (Fla.)	25	5

1949—Won 9, Lost 3.

Miss. Southern	71	7
L.S.U.	19	0
Mississippi	47	0
Georgia	25	0
The Citadel	44	0
Southern Methodist	7	20
Cincinnati	14	7
Xavier	21	7

Team	Ky.	Opp.
Florida	35	0
Tennessee	0	6
Miami (Fla.)	21	6
ORANGE BOWL		
Santa Clara	13	21

Baseball

1896—Won 1, Lost 2

Centre	6	12
K. U.	13	9
Wesleyan	7	27

1897—Won 0, Lost 2

L.A.C.	11	18
Wesleyan	-	-
State College	9	13

1903—Won 8, Lost 2

Transylvania	15	9
Central U.	7	2
Berea	6	1
Georgetown	7	1
South Ky. College	12	9
South Ky. College	15	14
South Ky. College	15	5
Cincinnati	6	1
Boston Americans	3	24
Boston Americans	2	17

1904—Records not available

1905—Won 8, Lost 8

K.M.I.	7	4
Rochester League	1	8
Central	3	0
Kent U.	7	13
Central	8	3
Cumberland	4	10
Cumberland	10	8
Cumberland	2	3
Vanderbilt	2	7
Vanderbilt	6	8
Vanderbilt	4	8
Transylvania	15	2
Berea	12	4
Indiana U.	1	3
Transylvania	8	3
Transylvania	5	2

1906—Won 12, Lost 2, Tied 1

Lexington A.C.	6	3
K.M.I.	7	6
Georgetown	5	0
Miami U.	12	6
Millersburg M. I.	3	0
Georgetown	12	4
Central	5	4
Univ. of Virginia	2	7
Richmond College	2	3
No. Car. A&M	2	0
Washington & Lee	4	4
Clifton Forge	5	0
Morris Harvey	8	4
Georgetown	8	0
Berea	8	2

1907—Won 10, Lost 2

Lexington A.C.	5	2
Cincinnati	5	4
Cincinnati	22	2
Millersburg M. A.	3	5
Georgetown	1	0
Transylvania	14	4
Central	2	4
Millersburg A.C.	3	0
Georgetown	-	-
Transylvania	-	-
Georgetown	1	0

Team	Ky.	Opp.
Transylvania	8	1
Central	-	-
Miami	2	1
Central	2	1

1908—Won 13, Lost 5

Maryville	3	3
Maryville	1	3
Transylvania	4	0
Georgetown	6	0
Earlham	1	0
Butler	9	0
Depauw	0	4
Franklin	4	1
Central	0	9
Berea	9	5
DePauw	9	5
DePauw	9	1
Georgetown	17	3
Transylvania	8	1
Transylvania	4	6
Central	4	0
Georgetown	4	5
Transylvania	7	1

1909—Records Not Available

1910—Won 12, Lost 8, Tied 1

Manual H.S.	11	4
Louisville H.S.	8	2
Transylvania	18	4
Ky. Wesleyan	6	1
Central	10	4
No. Car. A&M	3	5
Univ. N.C.	0	5
Trinity College	2	5
Trinity College	12	15
Tennessee	6	4
Tennessee	15	3
Cincinnati	9	3
Louisiana MTHS	3	3
Georgetown	2	3
Central	4	3
Ky. School for Deaf	1	5
Georgetown	4	3
DePauw	1	2
Georgetown	4	0
Central	4	0

1911—Won 11, Lost 3

Ky. Wesleyan	4	3
Michigan	1	3
Transylvania	1	3
Georgetown	4	1
Cincinnati	7	6
Manual H. S. (Won)		
Louisville H. S. (Won)		
Ohio Wesleyan (Lost)		
Cincinnati	10	3
Transylvania	9	0
Georgetown	9	0
Georgetown	6	0
Transylvania	5	3

1912—Won 12, Lost 5, Tied 1

Michigan	7	7
Georgetown	10	3
Cincinnati Law School	4	3
Central	4	5
Louisville Manual HS	4	0
Louisville H.S.	5	1
Culver Military In.	6	2
Notre Dame	2	15
Michigan	4	6
Ohio Wesleyan	5	2
Cincinnati	7	2
Transylvania	6	4
W. Va. Wesleyan	0	5
Georgetown	22	3
Transylvania	7	9
Central	9	0
Georgetown	7	4
Transylvania	14	5

(Continued on Next Page)

Team	Ky.	Opp.	Team	Ky.	Opp.	Team	Ky.	Opp.
(BASEBALL — Cont.)			1920—Won 11, Lost 3			Alabama 2 8		
1913—Won 3, Lost 5, Tied 1			Michigan 3 8			Miss. A&M 0 9		
Michigan	3	10	Miami	11	2	Miss. A&M 3 9		
Louisville Manual HS	9	0	Centre	12	2	Mississippi 0 2		
Hanover	18	3	DePauw	4	2	Centre 8 0		
Oberlin	2	3	Tennessee	3	0	1926—Won 5, Lost 5, Tied 2		
Michigan	1	11	Tennessee	7	1	Michigan 8 13		
Michigan Ags.	2	6	Cincinnati	5	2	Georgetown 10 0		
Heidelberg Univ.	8	0	Cincinnati	2	6	Cincinnati 10 10		
Wilmington	4	4	Miami	4	0	Western Norm. 9 9		
Hawaiian Univ.	3	7	DePauw	14	6	Vanderbilt 7 9		
1914—Won 9, Lost 5			Indiana State Norm.	14	2	Vanderbilt 6 9		
Kentucky S. D.	13	3	Univ. of Ind.	5	14	Centre 9 0		
Michigan	1	7	Georgetown	6	3	Miss. A&M 6 2		
Tennessee	7	0	Georgetown	6	1	Miss. A&M 12 1		
Illinois	14	2	1921—Won 6, Lost 7			Centre 19 5		
Miami	8	7	Georgetown	5	2	Georgia 7 11		
Sewanee	5	0	Ky. Wesleyan	9	2	Georgia 2 16		
Sewanee	2	11	Michigan	1	9	1927—Won 6, Lost 7		
Alabama	2	5	Cincinnati	0	12	Ky. Wesleyan 7 0		
Alabama	2	1	Centre	9	8	Georgia Tech 2 3		
Tennessee	10	1	Georgia	1	11	Georgia Tech 5 7		
Tennessee	2	6	Vanderbilt	4	9	Georgia 6 15		
Tennessee	2	2	Tennessee	7	8	Georgia 6 7		
Cincinnati	8	2	Vanderbilt	7	5	Notre Dame 2 3		
Univ. of Hawaii	2	4	Vanderbilt	5	6	Minnesota 6 2		
Marietta College	3	2	Cincinnati	8	2	Univ. of Louisville 2 12		
1915—Won 7, Lost 8, Tied 1			Ky. Wesleyan	6	7	Tennessee 6 0		
Ohio Univ.	5	7	Georgetown	8	3	Tennessee 5 9		
Michigan	2	8	1922—Won 7, Lost 9			Centre 11 4		
Tennessee	12	0	Georgetown	8	2	Univ. of Louisville 8 4		
Tennessee	7	8	Michigan	1	9	Centre 10 4		
Miami	7	6	Michigan	10	3	1928—Won 7, Lost 6, Tied 1		
Miami	1	2	Ohio State	10	6	Georgia 0 9		
Tennessee	7	4	Centre	10	9	Georgia 1 6		
Tennessee	15	2	Cincinnati	10	18	Oglethorpe 5 7		
Cumberland (Tenn.)	2	2	Cincinnati	12	14	Oglethorpe 4 4		
Cumberland (Tenn.)	6	7	Vanderbilt	6	10	Tennessee 3 5		
Cumberland (Tenn.)	4	0	Georgia	0	1	Illinois 4 7		
SPU (Clarkesville, Tenn.)	2	3	Georgia	7	11	Centre 13 0		
SPU	0	3	Mercer	0	9	Minnesota 3 2		
SPU	1	0	Mercer	5	6	Vanderbilt 4 6		
Univ. of Hawaii	4	6	Centre	10	1	Univ. of Louisville 12 4		
DePauw	3	2	Georgetown	3	5	Pressmen Home 10 6		
1916—Won 7, Lost 4			Tennessee	10	7	Louisville 13 2		
Ohio Wesleyan	6	2	Tennessee	7	3	Eastern Norm. 21 0		
Ohio Wesleyan	3	4	1923—Won 4, Lost 7			Centre 8 0		
Georgetown	7	6	Notre Dame	4	2	1929—Won 9, Lost 1, Tied 1		
Ohio State	4	16	Michigan	6	23	Louisville 3 0		
Ohio State	4	9	Oglethorpe	1	9	Minnesota 5 1		
Tennessee	4	7	Cincinnati	0	2	Centre 10 3		
Tennessee	7	4	Tennessee	6	3	Vanderbilt 16 11		
Georgetown	8	6	Tennessee	6	1	Vanderbilt 3 8		
DePauw	9	1	Oglethorpe	2	8	Centre 7 3		
DePauw	4	2	Oglethorpe	6	7	Tennessee 11 1		
Centre	3	1	Georgia Tech	5	9	Tennessee 5 4		
1917—Won 6, Lost 1			Centre	5	6	Louisville 0 0		
Univ. of Indiana	3	1	Georgetown	8	3	Cincinnati 4 3		
Tennessee	1	0	1924—Won 8, Lost 5			Cincinnati 5 3		
Miami Univ.	5	1	Indiana	6	2	1930—Won 7, Lost 5, Tied 1		
Illinois	0	2	Michigan	9	8	Miami Univ. 3 2		
Centre	3	1	Cincinnati	5	3	Ohio State 8 5		
Georgetown	3	0	Maryville	0	3	Ohio State 6 7		
Centre	5	3	Maryville	13	10	Ohio State 0 5		
1918—Records Not Available			V.P.I.	8	2	Ohio State 5 10		
1919—Won 11, Lost 2			V.P.I.	4	2	Illinois 3 2		
Georgetown	8	3	Tennessee	1	5	Vanderbilt 8 4		
Georgetown	10	3	Tennessee	5	1	Vanderbilt 5 13		
Tennessee	11	0	Maryville	1	7	Miami Univ. 3 8		
Miami	0	4	Vanderbilt	9	11	Cincinnati 3 3		
Cincinnati	11	8	Vanderbilt	2	7	St. Xavier 16 4		
Miami	7	5	Centre	7	0	Cincinnati 7 2		
Cincinnati	7	4	1925—Won 4, Lost 9			1931—Won 5, Lost 9		
Georgetown	12	6	Georgetown	11	1	Ohio State 1 9		
Tennessee	11	3	Michigan	5	18	Ohio State 4 10		
Vanderbilt	13	10	Univ. of Louisville	8	2	Xavier 9 8		
Vanderbilt	13	1	Georgetown	22	4	Tennessee 9 8		
Centre	6	3	Georgia Tech	3	4	Tennessee 4 17		
Centre	3	4	Alabama	3	9			
			Alabama	5	10			
			Alabama	4	5			

(Continued on Next Page)

Team	Ky.	Opp.
(BASEBALL — Cont.)		
Vanderbilt	2	5
Vanderbilt	6	9
Eastern	11	10
Vanderbilt	6	7
Vanderbilt	3	16
Cincinnati	9	1
Tennessee	8	7
Tennessee	19	5
Xavier	0	4
1932—No Team		
1933—No Team		
1934—Won 1, Lost 11		
Miss. State	7	9
Miss. State	4	11
Eastern Norm.	14	5
Univ. of Louisville	0	6
Eastern Norm.	2	4
Marshall College	4	10
Morehead Norm.	9	10
Cincinnati	0	3
Cincinnati	2	3
Marshall College	2	6
Univ. of Louisville	6	7
1935—No Team		
1936—No Team		
1937—No Team		
1938—No Team		
1939—Won 5, Lost 7		
Vanderbilt	3	10
Vanderbilt	6	7
Eastern	4	6
Tennessee	18	5
Cincinnati	8	9
Xavier	8	6
Eastern	5	8
Cincinnati	5	4
Vanderbilt	4	2
Vanderbilt	24	9
Xavier	6	7
1940—Won 7, Lost 7		
Ohio State	1	9
Ohio State	4	10
Xavier	9	8
Tennessee	9	8
Tennessee	4	17
Vanderbilt	2	5
Vanderbilt	6	9
Eastern	11	10
Vanderbilt	6	7
Vanderbilt	3	16
Cincinnati	9	1
Tennessee	8	7
Tennessee	19	5
Xavier	0	4
1941—Won 8, Lost 11		
Georgia Tech	5	12
Georgia Tech	5	17
Vanderbilt	13	10
Vanderbilt	3	9
Alabama	1	7
Alabama	3	7
Miss. State	2	28
Tennessee	1	8
Tennessee	4	2
Eastern	11	6
Cincinnati	5	6
Vanderbilt	5	2
Vanderbilt	6	8
Ohio State	3	4
Ohio State	6	2
Tennessee	6	15

Team	Ky.	Opp.
Tennessee	6	3
Cincinnati	5	3
Eastern	6	5
1942—Won 7, Lost 6		
Georgia Tech	7	10
Georgia Tech	5	6
Vanderbilt	9	6
Ohio State	5	19
Tennessee	12	9
Tennessee	5	11
Eastern	3	2
Cincinnati	3	1
Vanderbilt	8	20
Vanderbilt	4	5
Ft. Darnall Gen. Hosp.	18	7
Eastern	10	8
Marshall	5	4
1943—No Team		
1944—No Team		
1945—No Team		
1946—Won 1, Lost 5		
Georgetown	19	0
Eastern	1	4
Murray	8	9
Ohio Univ.	2	9
Ohio Univ.	4	12
Ohio Univ.	0	21
1947—Won 7, Lost 9, Tied 1		
Xavier	15	18
Cincinnati	3	6
Xavier	1	1
Eastern	4	13
Murray	7	9
Vanderbilt	5	3
Vanderbilt	2	2
Georgetown	12	2
Tennessee	2	11
Tennessee	2	3
Cincinnati	5	6
Vanderbilt	8	0
Vanderbilt	5	2
Georgetown	5	6
Tennessee	6	2
Tennessee	12	2
1948—Won 9, Lost 7		
Vanderbilt	1	5
Vanderbilt	6	12
Georgia	12	10
Georgia	2	26
Vanderbilt	9	10
Vanderbilt	7	0
Georgia Tech	8	5
Georgia Tech	6	18
Georgia Tech	5	4
Georgia Tech	8	12
Tennessee	14	1
Tennessee	6	1
Georgia	9	13
Georgia	11	6
Tennessee	15	7
Tennessee	11	3
1949—Won 15, Lost 10		
Georgia Tech	14	7
Georgia Tech	9	8
Vanderbilt	4	2
Vanderbilt	10	8
T.P.I.	10	7
Georgia	3	2
Georgia	12	13
Vanderbilt	7	2
Vanderbilt	4	6
Georgia Tech	14	18
Georgia Tech	9	1
Tennessee	5	4
Tennessee	8	3
Georgia	0	15

Team	Ky.	Opp.
Georgia	7	13
Tennessee	4	2
Tennessee	8	10
SEC CHAMPIONSHIP PLAY-OFFS		
Miss. State	3	6
Miss. State	2	7
Miss. State	4	3
Miss. State	5	7
N.C.A.A. TOURNAMENT—		
DISTRICT II		
at Charlotte, N. C.		
Wake Forest	3	5
Richmond	2	0
Mississippi State	2	0
Wake Forest	0	8
1950—Won 14, Lost 2, Tied 1		
Georgia	2	5
Georgia	4	6
Georgia Tech	10	6
Georgia Tech	14	9
Cincinnati	8	6
Vanderbilt	14	6
Vanderbilt	2	1
Centre	5	3
Georgia Tech	7	2
Georgia	3	7
Georgia	8	7
Vanderbilt	8	7
Cincinnati	12	2
Tennessee	11	10
Tennessee	7	6
Tennessee	5	4
Tennessee	9	5
SEC CHAMPIONSHIP PLAY-OFFS		
Alabama	1	4
Alabama	0	13
Alabama	14	3
Alabama	1	9
N.C.A.A. TOURNAMENT—		
DISTRICT II		
Wake Forest	4	9
Clemson	4	2
Wake Forest (Semi-Finals)	2	9

Fencing

1938—Won 1, Lost 4		
Illinois	1	17
North Carolina	6	12
Vanderbilt	3	6
Cincinnati	8	10
Vanderbilt	5	4
1939—Won 2, Lost 6		
Ohio State	8	9
Illinois	4	13
Chanute Field	7	10
Cincinnati	7	10
Chanute Field	6	11
Cincinnati	8	9
Le Panache	11	6
Georgia Tech	9	8
1940—Won 5, Lost 1, Tied 1		
Ohio State	7	10
Cincinnati	13	4
Vanderbilt	11	5
Georgia Tech	8½	8½
Cincinnati	11	6
Georgia Tech	10	7
Vanderbilt	10	6
1941—Won 2, Lost 6		
Ohio State	6	11

(Continued on Next Page)

Team	Ky.	Opp.
(FENCING — Cont.)		
Cincinnati	7	10
Charleston Fencing Club	4	13
Vanderbilt	6	10
Georgia Tech	7	10
Vanderbilt	7	9
Cincinnati	9	8
Georgia Tech	10½	6½

1943-48—Records not available

1949—Won 6, Lost 1

Illinois	5	22
Vanderbilt	10	6
Cincinnati	17½	9½
Louisville	13	4
Vanderbilt	5	4
Louisville	15	2
Cincinnati	11	6

1950—Won 7, Lost 3

Illinois	9	18
Vanderbilt	10	6
Louisville	19½	7½
Notre Dame	2	25
Virginia	12½	14½
North Carolina	20	7
N. Carolina State	22	5
Cincinnati	16	11
Louisville	14	3
Vanderbilt	9	7

Track

1920—Won 2, Lost 1

Vanderbilt	62½	46½
Miami	52½	56½
Cincinnati	59	58
S.I.A.A. Meet	19	

1921—Won 1, Lost 2

Vanderbilt	35	82
Miami	52	65
Tennessee	92	25
S.I.A.A. Meet	16	

1922—Won 2, Lost 0

Tennessee	80	51
Cincinnati	68½	48½
Ky. Intercollegiate	63	

1923-29—Records not available

1930—Won 4, Lost 1

Georgetown	87½	29½
Vanderbilt	65½	51½
Tennessee	49	68
Sewanee	73½	43½
Cincinnati	68½	62½

1931—Won 5, Lost 0

Louisville	77	40
Vanderbilt	67½	49½
Tennessee	74	43
Sewanee	85	32
Cincinnati	77	54

1932—Won 3, Lost 2

Louisville	101½	15½
Vanderbilt	47	70
Georgia Tech	51	80
Berea	101½	29½
Tennessee	68	49

1933—Records not available

1934—Won 3, Lost 2

Butler Relays	0	
Vanderbilt	74	43
Georgia Tech	46⅔	79⅓
Hanover	99	18
Berea	80	51
Tennessee	50	67

1935—Won 3, Lost 2

Vanderbilt	85	32
Georgia Tech	50	81
Hanover	77	54
Berea	85	46
Tennessee	48⅓	68⅓

1936—Won 2, Lost 1

Vanderbilt	61½	55½
Tennessee	51	66
Berea	94	37
Conference Meet	22	

1937—Won 3, Lost 0

Vanderbilt	59	58
Berea	95	36
Tennessee	70	47

1938—Won 2, Lost 2

Vanderbilt	45	72
Hanover	85	46
Berea	89½	41½
Tennessee	53½	63½

1939—Records not available

1940—Won 3, Lost 1

Hanover	90	45
Vanderbilt	CANCELLED	
West Virginia	61	55
Tennessee	26½	90½
Cincinnati	79	51

1941—Won 2, Lost 3

Vanderbilt	46	71
Cape Girardeau	40	91
Hanover	85	46
Tennessee	27	90
Cincinnati	66⅔	64⅓

1942—Won 2, Lost 2

Vanderbilt	35½	71½
Tennessee	46	85
T.P.I.	85	49
Berea	83½	47½

1943-45—No Team

1946—Records not available

1947—Won 3, Lost 2

T.P.I.	79	41
Vanderbilt	56	61
G'town & Centre — 78; Centre 12; Georgetown 30		
Tennessee	57½	59½
Berea	104	27

1948—Records not available

1949—Won 3, Lost 0

Cincinnati	68⅔	53⅓
Vanderbilt	78½	52½
Louisville	67⅔	54⅓
S.E.C. Meet	8½	

1950—Won 2, Lost 2

Vanderbilt	44	87
Marshall	74	48
Tennessee	41	83
Louisville	66	56

Golf

1939—Won 6, Lost 2

Louisville	10	8
Cincinnati	5	16
Louisville	9½	8½
Tennessee	16	14
Xavier	17	1½
Tennessee	14½	6½
Cincinnati	7	11
Xavier	11	7

1940—Won 5, Lost 1, Tied 1

Michigan Teachers	9	9
Georgia Tech	11	7
Cincinnati	8½	9½
Tennessee	16½	1½
Louisville	16½	1½
Tennessee	14	4
Vanderbilt	11	7

INTERCOLLEGIATE GOLF CHAMPIONS

1941—Won 9, Lost 0

Cincinnati	12½	5½
Missouri St. Tchrs. Col.	18	0
Western Normal	15½	2½
Tennessee	14½	3½
Western Normal	17	1
Cincinnati	16½	1½
Miami (Ohio)	18	0
Tennessee	11½	6½
Miami	13	5

1942—Won 9, Lost 0

Georgia Tech	16½	1½
Michigan	11½	6½
Cincinnati	16½	1½
Tennessee	18	0
Cincinnati	11	7
Miami	15½	2½
Tennessee	18	0
Miami	18	0
Vanderbilt	15	3

No Team in 1943, '44, '45

1946—Results not available

1947—Results not available

1948—Won 5, Lost 3

Indiana	12½	14½
Western Mich. (score not listed)		
Vanderbilt	13	5
Miami (Ohio)	21	6
Indiana	11½	15½
Notre Dame	9	18
Xavier	20	7
Tennessee	13½	4½
Georgia Tech	11	7

1949—Won 7, Lost 7

Vanderbilt	4½	13½
W. Kentucky State	7½	10½
Vanderbilt	8	10
Xavier	24½	2½
Tennessee	16	2
Georgia Tech	½	17½
Georgia	8½	9½
Miami (Ohio)	22	5
Tennessee	11	7
Cincinnati	10	17
Xavier	10½	7½
Miami (Ohio)	12	15
Cincinnati	10	8
Louisville	17½	9½
Georgia Tech	CANCELLED	

(Continued on Next Page)

Team	Ky.	Opp.
(GOLF — Cont.)		
1950—Won 12, Lost 4, Tied 1		
Louisville	6½	20½
Xavier	20½	6½
Marshall	23½	3½
Vanderbilt	13½	13½
Mississippi State	21½	5½
Alabama	10½	16½
Vanderbilt	20½	6½
Miami (Ohio)	23	4
Cincinnati	19	8
Tennessee	13½	7½
Georgia	5½	7½
Tennessee	14	7
Cincinnati	17	10
Miami (Ohio)	16½	10½
Georgia Tech	11	7
Georgia Tech	14½	3½
Xavier	11½	16½

Tennis

1916—Won 3, Lost 0		
Georgetown	3	0
Wabash	2	1
Georgetown	2	1
1917-18—No Team-War		
1919-22—Records not available		
1923—Won 2, Lost 1		
Centre	2	3
Berea	3	2
Centre	3	1
1924—Records not available		
1925—Won 4, Lost 3, Tied 1, Incomplete 1		
Georgetown	7	0
Cincinnati	3	4
Covington Tennis Club	6	1
Louisville	2½	2½
Berea	5	2
Georgetown	7	0
Georgetown	7	0
Louisville	2	3
Cincinnati	0	7
1926-31—Records not available		
1932—Won 7, Lost 3		
Wheaton College	6	1
Berea	7	2
Berea	6	0
St. Xavier	8	0
Cincinnati	3	6
Marshall College	6	3
Maryville	7	1
Tennessee	2	5
Sewanee	2	5
St. Xavier	6	1
1933—Won 4, Lost 6		
Emory College	3½	5½
Alabama	0	7
Tulane	0	7
Berea	7	0
Berea	8	0
St. Xavier	6	1
Indiana	5	4
Illinois	0	7
Ohio State	2	5
Cincinnati	3	6

1934—Won 7, Lost 4		
Louisville	3	4
Vanderbilt	3	6
Berea	4	3
Tulane	0	6
Indiana	7	0
St. Xavier	6	1
Cincinnati	5	4
Chattanooga	4	2
Louisville	4	3
Tennessee	4	2
Centre	3	4
1935—Won 4, Lost 2		
Berea	7	2
Vanderbilt	6	3
Alabama	0	5
Auburn	7	2
Georgia	0	9
Berea	6	3

1936—Won 11, Lost 1		
Wayne University	5	2
Tennessee	5	2
Vanderbilt	6	3
Tennessee	5	4
Berea	8	1
Cincinnati	8	1
Indiana	7	2
Purdue	5	1
Notre Dame	7	2
Michigan State	4	5
Wayne University	8	1
Indiana	5	4

1937—Won 8, Lost 2, Rained out 4, Cancelled 1		
Indiana	4	3
University of South	1	5
Tennessee	7	2
University of South	7	2
Michigan State	1	8
Notre Dame	7	2
Louisville	8	1
Cincinnati	7	2
Tennessee	7	0
Berea	8	1

1938—Won 12, Lost 3		
Ohio State	8	1
Berea	9	0
Tennessee	8	1
Wayne	3	4
Vanderbilt	7	0
Indiana	5	4
Purdue	9	0
Notre Dame	6	3
Northwestern	2	7
Michigan State	7	2
Tennessee	9	0
Kenyon College	2	7
Berea	9	0
Cincinnati	5	4
Georgia	5	1

1939—Won 6, Lost 3, Tied 1		
Michigan State	1	8
Berea	9	0
Tennessee	6	3
Sewanee	5	4
Georgia Tech	2	7
Notre Dame	4½	4½
Indiana	6	3
Cincinnati	3	6
Berea	9	0
Tennessee	6	3

1940—Won 6, Lost 6		
Tennessee	5	4
Indiana	5	4
Berea	9	0
Tennessee	5	4
Western	7	2
Detroit	7	0

Ohio State	2	6
Wayne Univ.	0	9
Mich. State	0	9
Notre Dame	1	8
Georgia Tech	2	7
Cincinnati	1	8

1941—Won 8, Lost 5		
DePauw	4	5
Georgia Tech	3	5
Tennessee	6	2
Sewanee	6	3
Vanderbilt	6	3
Western	9	0
Spring Hill	1	5
Wayne Univ.	6	3
Notre Dame	3	6
Cincinnati	7	2
Michigan State	3	6
Berea	8	1
Clarksville, Ind.	7	2

1942—Won 3, Lost 7		
Georgia Tech	3	6
Miami, Fla.	1	8
Wayne	5	4
Mich. State	2	7
Notre Dame	1	8
Tennessee	2	6
Western	3	4
Cincinnati	5	1
Vanderbilt	1	8
Berea	7	0

1943-45—No teams		
1946-48—Records not available		
1949—Won 4, Lost 3		
Kalamazoo	0	9
Vanderbilt	0	9
Xavier	6	1
Ky. Wesleyan	6	1
Xavier	6	1
Berea	7	0
Louisville	5	4
T.P.I.	3	6

1950—Won 1, Lost 6		
Indiana	1	6
Vanderbilt	1	3
Western Ky.	3	4
Tennessee	0	9
Berea	10	0
Cincinnati	0	9
Georgia Tech	3	6

Swimming

1940—Records not available		
1941—Won 2, Lost 5		
Georgia Tech	34	41
Tennessee	21	54
Tusculum	41	34
Michigan State	17	58
DePauw	26	49
Loyola	29	37
Berea	45	29
SEC Meet	7	
1942—Won 0, Lost 5		
Tennessee	18	57
Georgia	37	38
Georgia Tech	9	66
Indiana	23	59
Tusculum	37	38
1943-50—No teams		

Kentucky All-Americans

BASIL HAYDON
Basketball —'21

BURGESS CAREY
Basketball —'25

CAREY SPICER
Basketball —'29-31

PAUL McBRAYER
Basketball —'30

FORREST SALE
Basketball —'32-33

ELLIS JOHNSON
Basketball —'33

JOHN DEMOISEY
Basketball —'34

LEROY EDWARDS
Basketball —'35

BERNARD OPPER
Basketball —'39

LEE HUBER
Basketball —'40

CLYDE JOHNSON
Football —'42

ROBERT BRANNUM
Basketball —'44

JACK PARKINSON
Basketball —'46

RALPH BEARD
Basketball —'47-48-49

ALEX GROZA
Basketball —'47-48-49

WALLACE JONES
Basketball —'49

DOMINIC FUCCI
Baseball —'49

ROBERT GAIN
Football —'49-50

VITO PARILLI
Football —'50



MEMORIAL COLISEUM

APPROPRIATIONS FOR THE SITE AND BUILDING WERE MADE BY THE GENERAL ASSEMBLIES OF 1942, 1946, AND 1949. THE PURCHASE OF THE SITE WAS AUTHORIZED IN 1944. CONSTRUCTION WAS STARTED IN 1947 AND THE BUILDING WAS COMPLETED AND DEDICATED IN 1950. HEREAFTER IS LISTED THE MEMBERSHIP OF THE BOARD OF TRUSTEES DURING THE PERIOD FROM OCTOBER ELEVEN, 1941, WHEN THE PURCHASE OF THE SITE WAS AUTHORIZED, TO FEBRUARY TWENTY-TWO, 1949, WHEN THE CORNERSTONE WAS LAID.

GOVERNOR EARLE C. CLEMENTS

GOVERNOR KEEN JOHNSON GOVERNOR SIMEON S. WILLIS

ELDRID E. ADAMS
MARSHALL BARNES
MRS PAUL G. BLAZER
JOHN W. BROOKER
HORACE S. CLEVELAND
JOHN S. COOPER
GROVER H. CRBECH
THOMAS H. CUTLER
JOHN C. EVERETT
HARPER GATTON
LOUIS E. HILLENMEYER
ROBERT P. HOBSON

BOSWELL B. HODCKIN
GUY A. HUGUELET
LEE KIRKPATRICK
WILLIAM H. MAY
EDWARD C. O'NEAR
HOVEY D. PALMORE
JAMES PARK
ELLIOTT ROBERTSON
JIM N. SMITH
RICHARD C. STOLL
ROBERT C. TWAY
HARRY E. WALTERS

JOHN FRED WILLIAMS

HERMAN LEE DONOVAN PRESIDENT OF THE UNIVERSITY

JOHN T. GILLIG ARCHITECT

ARCHITECTS ASSOCIATED

ERNST V. JOHNSON AND HUGH MERIWETHER

ENGINEERS

SAMUEL A. MORY JR. BEN C. INGELS WARREN AND RONALD

CONTRACTORS

GRAYSON JONES CONSTRUCTION COMPANY

MIDLAND STRUCTURAL STEEL CORPORATION

STROCK CONSTRUCTION COMPANY

WILLIAM HILBURN AND COMPANY

H. AND J. JACOBS COMPANY INC.

GEORGE BRIDGEMORE AND SON