



**Gay and
Lesbian
Services
Organization**

The GLSO NEWS

October 2006

A Publication of the Lexington Gay and Lesbian Services Organization

Volume 21 Number 7

IT'S A MATTER OF PRIDE

A drag Show to benefit The Pride Center of the Bluegrass will be held on Wednesday, October 18 at the Bar Complex. Doors open at 8 pm and the show is scheduled for 9 pm. Admission is \$5 with proceeds to benefit the Pride Center of the Bluegrass.

This promises to be a great show featuring LaToya BaCall, Sundae DeLarouge, Crystal Diamond, Natalie Gaye, Jennifer Grant, Lady Marmalade, Bunny Marshall, Kristen Miranda, Empress XXV Sierra Reign, and Kenneth J. Squires.

GLSO invites you to visit the Pride Center at 839 Waller Ave. Check out a book or video, schedule a meeting, or consider renting the space for a party.

Diva of Darkness

Come kick off your Halloween early as the Imperial Court of Kentucky hosts its annual Diva of Darkness Pageant at the Bar Complex on Wednesday, October 25th at 9:30 pm. Doors open at 8:30 pm with a \$5 cover. Proceeds benefit the charities of the Court, including GLSO, AVOL, Moveable Feast, KFA, and Bluegrass Fairness.

With categories like Creative Funeral Wear, you're bound to be entertained. Potential contestants may pick up applications from Brad @ the Bar, or by emailing Empress Sierra at bradleyeday@yahoo.com or Emperor John at Ursaloco2@aol.com There is a \$10 application fee.

See you there!

Marriage Equality Matters

The Bluegrass Chapter of the Kentucky Fairness Alliance will host a free educational forum on Sat., October 7 at the UK Law Courtroom, 620 S. Limestone. The forum, entitled Marriage Equality Matters, will begin at 1 pm with a reading of the play, *Tying the Knot*, by David Rush.

The play focuses on several gay and lesbian couples and explores how the lack of civil marriage rights effects their relationships. Mr. Rush will answer questions after the reading.

At 3 pm refreshments will be served, followed by a presentation by Evan Wolfson, Executive Director of Freedom to Marry. Wolfson is a civil rights attorney and a longtime leader of the marriage movement. More info on page 8 & 14.

Annual Meeting

The Bluegrass Chapter of the KFA will host its annual membership meeting October 24 at 7 pm in the lower level of the downtown Central Public Library. We invite you to come hear what the chapter has been doing and learn ways to become active. For more info, contact Cindy Downey at 859-539-2703.

Debra Hensley

Insurance

1513 Nicholasville Rd.

859 276-3244



**GAY AND
LESBIAN
SERVICES
ORGANIZATION**

Lexington, Kentucky

GLSO NEWS

Vol. 21 No.7

Published Monthly by:

GLSO

P.O. Box 1172 Lex., KY 40588

www.lexingtonglso@yahoo.com

www.glsopc.org

News Editors

Mary Crone & Jackie Cobern

Pride Center Office Manager

Bill Chandler

859 253-3233

GLSO BOARD

Tom Collins, President

Ben Salyers, Secretary

Jackie Cobern

Mary Crone

Aaron Hutson

Lindsay Mattingly

Sondra Mellott

Terry Mullins

GLSO Membership

& Newsletter

Individuals/Couples

\$20 per year

Opinions expressed in the GLSO News are those of the authors and don't necessarily represent those of the GLSO Board. Submissions received after the deadline, which is the 15th of each month, may be cut or not printed when space is limited. The staff reserves the right to edit or reject submissions and ads.

MR. KENTUCKY LEATHER 2007

The Imperial Court of Kentucky will sponsor the Mr. Kentucky Leather 2007 Contest. The two day event will be held Friday and Saturday, October 20-21, at **StarbaseQ**, 921 West Main Street, in downtown Louisville. The contest will be produced by Kentucky Leather Productions with Ky's Leather Clubs: the Lexington Lyons Leather Club, the Louisville Nightwings, and the Louisville Trailblazers serving as co-sponsors.

The weekend will get underway with a reception on Friday, October 20 at **StarbaseQ** for judges, contestants, and special guests from 9 to 10 PM. This will be followed by a Meet and Greet that will include the introduction of the contestants, judges, and special demonstrations.

The contest will be held on Saturday, October 21, 2006 at Starbase Q. at 11 PM. Doors will open at 9:00 on Saturday. Cover for Saturday night will be \$5. The opening ceremony on Saturday night will include a Color Guard, the Leather Anthem and a Parade of Colors. Kentucky Bootblack 2006 Pony will offer boot polishing. Several gift baskets will be raffled.

Judges for the contest are: Rev. Dan Newman, Mr. Tri-State Leather 2001; Donnie Ray, Mr. Kentucky Leather 2005; Thomas Smith, Mr. International Rubber 1999; Roger Spencer, Mr. International Daddy Bear; and Mistress Tammy, Great Lakes Master and Slave 2004.

The winner of the contest will represent Kentucky and the Imperial Court of Kentucky at the 29th annual International Mr. Leather competition in Chicago, IL, over the 2007 Memorial Day weekend. Net proceeds from the weekend will benefit the charities of the Imperial Court.

For additional information and/or contest applications contact Larry Stanley at LDStanley09@aol.com or 859-312-3816.

Deadline for Newsletter

October 15

**send articles, ads, and changes to
the directory to**

marycrone@insightbb.com &

lexingtonglso@yahoo.com

put "newsletter" in subject line

Community News

Robbie Bartlett in Concert

On Wednesday, October 11, Robbie Bartlett will be performing in concert at Comedy off Broadway. Comedian Bernie Lubbers will be joining her for an evening of great entertainment. Admission is \$6 at the door, show starts at 7:30. Tickets available www.comedyoffbroadway.com.

Robbie has been performing in Central Kentucky for several decades. Her talent and strong sense of musical direction is electric and engaging. She has a warm, smokey alto voice which she puts to good use in a diverse repertoire. She includes torchy blues songs, jass and R&B favorites and some raucous numbers that will get you on your feet.

Dress and Gender Alliance

The Lexington Dress and Gender Alliance (also know as the Diversity in Gender Alliance) is reorganizing. We are considering a new name and we would love your input on a variety of organizational matters. We still meet on the first Saturday of each month at a private location.

LexDGA is a peer support group for anyone that transcends gender norms. This includes transsexuals, intersexuals, cross dressers, drag kings, drag queens, gender queers, and people who are unsure what their gender identity might be. This is not a therapy group but we offer some honest conversation and support. Call the Pride Center for more info at 253-3233.

Gay Pride Union of Ky

The Gay Pride Union is a peer support group for the GLBT Community in Somerset, KY. For more info email: Alexstalcup@yahoo.com

Lexington Lyons Leather/Levi Club

The Lexington Lyons meet the second Monday of each month at the Pride Center, 389 Waller Ave. at 7 pm. In October that will be Mon.9. The Lyons are a group of friends that come together to celebrate strength, unity, and diversity in order to form a bond within a community that enjoys the Leather /Levi lifestyle.

Membership has grown steadily over the last year and we now have 14 active members. For more info visit <http://www.lexlyons.org>.

SisterSound Invitation

SisterSound is looking for interested women to join the chorus. We do not require auditions. Come to a rehearsal, meet some people, try singing with us and see how much fun we have together. Rehearsals are at 6 pm every Sunday at Landsdowne Cumberland Presbyterian Church, 333 Redding Rd. For information call Patti at 806-0243 or email paowens@excite.com

... Visit www.geocities.com/sistersound for more information about us.

Quirk Cafe and Coffee

Quirk Café & Coffee is located on Railroad St. in Midway, KY. It is an easy 15 minute drive from Lexington. We feature live music every Friday from 5:30 to 8 pm. For upcoming events you can call Quirk at (859) 846-4688. or check on line at www.kygallery.com/quirk/.

We are now open on Thurs, Fri. and Sat. evening, serving our full menu. We offer a variety of salads, soups, sandwiches and wraps. You can select from our 23 different gourmet press pot coffees & teas along with fresh baked scones.

Wishing Chair

Wishing Chair has been nominated by JP Folks for several 2006 awards for their recent CD *Underdog*. Including:

Best Americana Song: Calamity Jan

Best New Folk Song: Sidewalks

Best Roots Song: Sue Mundy

Best New Folk Album: *Underdog*

Congratulations to Miriam and Kiya for creating such wonderful music. See all the nominees at www.jpfolks.com/home.html. Scroll down the home page to see Wishing Chair's album cover along with those of the top nominees. This is an impressive accomplishment; only 1 in 300 songs got nominated and less than 1 in 50 albums.

Wishing Chair is on tour and they will be playing in the vicinity a couple of times in Oct.

Friday, October 13, Women Upfront Prod.

York Street Cafe - 738 York Street

Newport, KY - Showtime: 8:00 PM

:\$10 in advance and \$15 @ door

Saturday, October 14th, IndyIndie Concert

7:30 pm 7780 Eagle Valley Pass

Indianapolis IN 46214

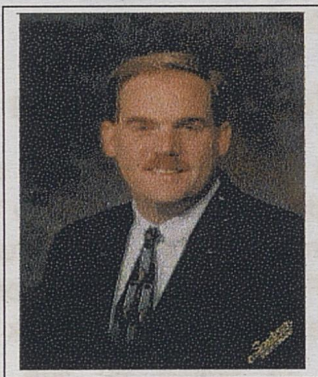
Computer Classes

Aaron Hutson, a GLSO Board Member, is teaching evening workshops in Excel and Photoshop at the Carnegie Center for Literacy and Learning. If you are a beginner or if you want to improve your skills, this class is for you. Classes start in early October, so sign up today. Email ccl1@carnegieliteracy.org or call 254-4175 or to register. Scholarships are available.

Two informal Saturday workshops are also offered, \$30 each. *Keeping Track* will be on Sat. Oct. 28 11 am - 1 pm. Learn how to make your life easier. Topics covered include: spreadsheets, databases, project management software, email, and organizers. Please bring samples of data or projects.

Digital Photo Triage is offered on Sat. Oct. 21 from 11 am - 2 pm. Topics covered include: scanning, retouching, saving, digital cameras, and memory cards. Please bring photos in any form. Questions? Please email Aaron at ahutson@gmail.com.

Scott Ackerman Real Estate Service With



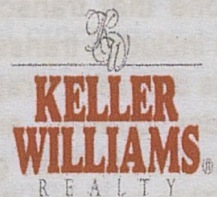
PROFESSIONALISM

RESULTS

INTEGRITY

DEDICATION

ENTHUSIASM



Mobile: 859 338-8483

Fax: 859 269-0065

E-mail: SAcker4224@aol.com



Serving Lexington &
All of Central Kentucky



Call me with all your Real Estate Needs

Sponsor of the Month

Debra Hensley Insurance

Where diversity, fairness and respect are valued.

Insurance and Financial services

Auto



Life



Home

Health

Business



&

Retirement Planning

1513 Nicholasville Rd.

Lexington, Kentucky 40503

(Across from UK Football Stadium)

859 276-3244

Pride Center News

389 Waller Ave. 859 253-3233 Mon. - Fri. 10 - 3 Sat 10 - 2

The Pride Center is also open Wed 5 - 7 pm and Thurs. 3 - 5 pm

Pride Center Activities

Lexington Insight

Pot Luck and Discussion Group

**Every Friday night - open to all
Pride Center 7:30 pm**

DISCUSSION GROUP

**Every Wed. 7 pm Open to all
Jane: ladyjaneky@yahoo.com**

Rent the Pride Center

There are a number of times when the GLSO Pride Center is not being used for meetings, discussion groups, etc. We would love to rent this space for \$25 a hour, with you doing the clean up. It is freshly painted and looks great. If you are looking for a space to have a party or reception, contact our office manager, Bill at 253-3233

D&R Gifts

**"Everything or Something
for all your Gift Needs"**

502-868-9635

ddh3498@bellsouth.net

Donny Hrdlicka & Russell Draper

D&R Gifts...

Come check out D&R Gift with items ranging from home decor, bath products, tools, and everything in between. They carry affordable and unique gifts for all occasions. Stop by the Pride Center today and pick up a copy of the catalog, Big Value Book or contact Donny and Russ at 502-868-9635.

Saturday Singles

A group for singles, women and men, is starting at the Pride Center on October 14. at 7 pm. The purpose of this group is to give support to people who are single and would like to meet other people.

Individuals who are new to our community, recently coming out, single again, or looking for new friends to socialize with are welcome. Come help us plan some activities at this organizational meeting. We are open to ideas about outings and/or plan activities for other Saturday nights. Call Jackie at 859 971-3315 for more information.

Volunteer Opportunities

1. **Keep the Pride Center open one Saturday a month 10 am - 2 pm. Or one evening a week 5 - 7. This could be a shared responsibility. (call Bill at 253-3233)**
2. **Start a group for parents of GLBT people. Could be affiliated with PFLAG (Parents, Friends and Families of Lesbians and Gays.) or it could be just a discussion group. (call mary 266-5904)**
3. **Distribute this newsletter to a couple of locations. (call mary 266-5904)**
4. **Write for this newsletter. (call mary)**
5. **Start a movie night (or afternoon) or other social event at the Center. (call Bill)**
6. **Help us with a fundraiser**

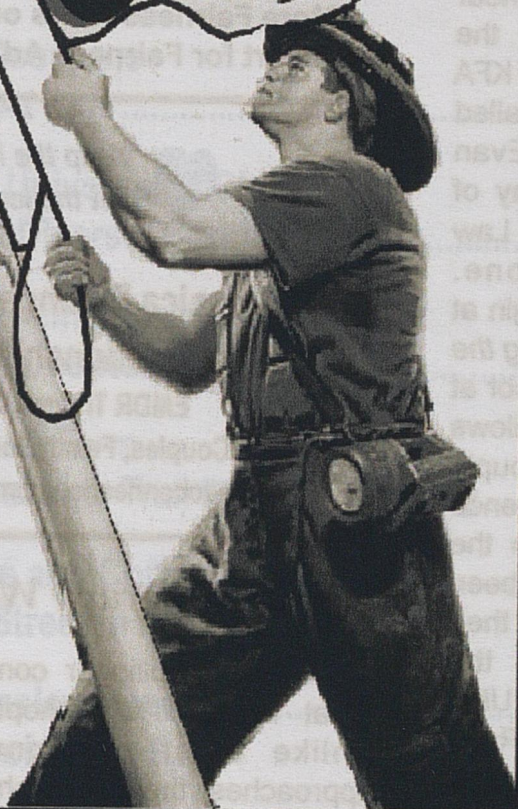
Diversity Directory

The Humanitarian Diversity Directory is available at the Pride Center. This directory lists many organizations in Lexington that are working to make Lexington more inclusive. Both GLSO and KY Fairness, Bluegrass Chapter are sponsors of this publication. Pick up a copy next time you visit the Pride Center.

IT'S A MATTER OF PRIDE
A DRAG SHOW TO BENEFIT THE PRIDE CENTER OF THE BLUEGRASS

COMING TO THE BAR COMPLEX
WEDNESDAY, OCTOBER 18, 2006
DOORS OPEN AT 8:00
SHOWTIME 9:00
ADMISSION \$5.00

GLSO PRIDE
CENTER OF THE
BLUEGRASS



FEATURING THE TALENTS OF:

LaToya BaCall
Sundae DeLarouge
Crystal Diamond
Natalie Gaye
Jennifer Grant
Lady Marmalade
Bunny Marshall
Kristen Miranda
Empress XXV Sierra Reign
Kenneth J. Squires



We're located at 389 Waller Ave.

Visit The Center on the web at www.GLSOPC.org

The mission of the GLSO Pride Center of the Bluegrass is to improve the quality of life of the Gay, Lesbian, Bisexual and Transgendered individuals and their families of Central and Eastern Kentucky by providing a community focal point through outreach, information access and support.

The GLSO is a 501c(3) non-profit organization and appreciates your support.

KFA Presents
Marriage Equality Matters
with Evan Wolfson and David Rush

On October 7th, the Kentucky Fairness Alliance will host its annual fundraising dinner at the Hyatt in downtown Lexington. The event will feature keynote speaker Evan Wolfson who is the executive director of the nationally acclaimed group Freedom to Marry. Wolfson will address the important issue of marriage equality. To lighten things up a bit, the comedian Jade Esteban Estrada will perform at the dinner as well. Interested parties can find additional information on Wolfson and his organization at www.freedomtomarry.org and further information on Estrada at www.getjaded.com.

The dinner, organized by Sen. Ernesto Scorsone and Debra Hensley, has already proven a huge success for KFA. In fact, it is sold out. However, those who want to hear Evan Wolfson speak will still have the opportunity. The Bluegrass Chapter of KFA will host a free educational forum called Marriage Equality Matters with Evan Wolfson among others during the day of Saturday, October 7th at the UK Law Courtroom at 620 S. Limestone.

Marriage Equality Matters will begin at 1 p.m. with the reading of the play *Tying the Knot* by David Rush, a theater professor at Southern Illinois University. The play follows two gay couples and one lesbian couple through their relationships. The audience will get to explore what happens to the couples as a result of not having been allowed the same marriage rights as their heterosexual counterparts. After the reading, executed by volunteers from UK's theater department, the author David Rush will participate in a question and answer session.

Immediately after the question and answer session with David Rush, the audience will have the chance to meet Evan Wolfson personally during a meet and greet with refreshments. Wolfson will give a short presentation on his work with marriage

equality and moderate a panel of selected guests during a community dialogue after the meet and greet. The audience will have ample opportunity to ask questions of and receive answers from Wolfson and the panel at large.

The Bluegrass Chapter is extremely excited about hosting this educational forum. "This forum is an excellent opportunity to fulfill the part of our mission dealing with educating the general populace about LGBT issues. We hope that bringing Evan Wolfson and David Rush to the community will produce a huge turn out with lots of audience participation," says Cindy Downey, Chair of the Bluegrass Chapter.

"Since the event is free, I hope to see many members of the community in attendance," says event organizer Paul Brown. For the latest on the educational forum, go to www.kentuckyfairness.org, and check out their Get Active section or call Paul Brown at 859-227-5004.

More Fairness News on page 14.
See Insert for Fairness Ad you can post.



*"Keep the love you find,
Get the love you want!"*

Jessica Bollinger LCSW
Imago Relationship Therapist
EMDR Trauma Work
Couples, Family, Individual
imagoconnection.com 552-6533

Imago Therapy Workshops

Jessica Bollinger continues to offer great Imago workshops for couples. Unlike other relationship therapy approaches, these workshops offer ways for couples to reconnect in a positive way immediately. You then build on these feelings to establish positive communication. In addition to offering workshops, Jess also works with couples and individuals. Give her a call today.

GLSO RAINBOW SPONSOR

The Imperial Court of Kentucky.....252-3914

A Charity Organization

2006 PRIDE MONTH SPONSOR:

Scott Ackerman.

For all your real estate needs.....(mobile) 338-8483

GLSO NEWS SPONSORS 2006

SisterSound806-0243

Diverse music for all women

Richardson Vision Center

1757 Alexandria Drive Gardenside.....278-4201

Ernesto Scorsone

Attorney At Law254-5766

Unitarian Universalist Church

Seeking a Diverse Congregation.....223-1448

Kentucky Fairness Alliance

Bluegrass Chapter.....806-4114

Windy Knoll Farm

Riding Lessons, Trail Riding, Boarding.....299-7410

Quirk Café and Coffee.....859 846-4688

Railroad Street in Midway

Debra Hensley Insurance.....276-3244

1513 Nicholasville Rd.

Lexington Lyons619-3650

Levi and Leather Club

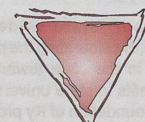
Ky. Department for Public Health.....1 800 420-7431

HIV/AIDS Branch

GLSO Newsletter Calendar

OCTOBER 2006

To schedule events at the Pride Center, call Bill at 253-3233
 Visit us on the web at: www.webspawner.com/users/glsqxnet



Sunday	Monday	Tuesday	Wednesday	Thursday	Friday	Saturday
9a and 11a UU Church 10:30 a St. Mychal's 6p SisterSound Rehearsal	2	7p GSA (call for place 266-5904)	Center Open 5p-7p 7p GLSO Discussion Group-PC 8p Gay/Lesbian AA Call for place 948-3434	Center Open 10a-7p	7p Lexington Insight @ the Pride Center 7:30 p Gay/Lesbian AA (call for place) 948-434	1p - KFA presents Tying the Knot. 3p Evan Wolfson-UK Law Courtm. 620 S. Limestone 7:30 LexDGA -PC 8p Monthly Pride Center Benefit @ Crossings 117 N. Limestone 233-7286
10:30 a St. Mychal's SoulForce (Jamie 230-5625 4p Integrity @ St. Michael's 6p SisterSound Rehearsal 6:00p Imperial Court Mtg.	7p Lexington Lyons-PC	7p GSA (call for place 266-5904)	Center Open 5p-7p 7p GLSO Discussion Group-PC 8p Gay/Lesbian AA Call for place 948-3434	Center Open 10a-7p	7p Lexington Insight @ the Pride Center 7:30 p Gay/Lesbian AA (call for place) 948-434	Center Open 10a-2p 7p New* Singles Support Group-PC
10a UU Church Service 10:30 a St. Mychal's Service 6p SisterSound Rehearsal	16	7p GSA (call for place 266-5904)	7p GLSO Discussion Group-PC 8p Pride Center Drag Benefit @ The Bar Complex 255-1551 224 East Main St.	Center Open 10a-7p	7p Lexington Insight @ the Pride Center 7:30 p Gay/Lesbian AA (call for place) 948-434 9p Mr. Leather Contest Opening night @ Starbase Q in Louisville	Center Open 10a-2p 11p Mr. Leather Contest @ Starbase Q in Louisville
10:30 a St. Mychal's SoulForce (Jamie 230-5625 4p Integrity @ St. Michael's 6p SisterSound Rehearsal 6:00p Imperial Court Mtg.	7:30p GLSO Board Mtg. (New Date)	7p GSA (call for place 266-5904)	17p GLSO Discussion Group-PC 8p Gay/Lesbian AA Call for place 948-3434 8:30p The ICK presents Dives of Darkness Paganat @ The Bar Complex	Center Open 10a-7p	7p Lexington Insight @ the Pride Center 7:30 p Gay/Lesbian AA (call for place) 948-434	Center Open 10a-2p
9a and 11a UU Church 10:30 a St. Mychal's 6p SisterSound Rehearsal	30	7p GSA (call for place 266-5904)				

Weekly Activities:

- Mondays:**
8pm - Gay/ Lesbian AA Discussion/Speaker (Call for Location) 278-7103
- Tuesdays:**
7pm - GSA (Gay Straight Alliance)
- Wednesdays:**
7pm - GLSO Discussion Group
8pm - Gay/Lesbian AA (Call for Location) 278-7103
- Fridays:**
7pm - Lexington Insight
8pm - Gay/Lesbian AA (Call for Location) 278-7103
- Saturdays:**
New to 2nd Saturdays' at 7:00pm
Singles Support Group
- Sundays:**
9:00am & 11 am - UU Church Worship Services.
10:30 - Mass. St. Mychal The Martyr.
6pm - SisterSound Rehearsal @ Landsdowne Presby. Church.

Bi-weekly:
6pm - The Imperial Court
SoulForce -Call Jamie 230-5625

Monthly Activities:

Mondays:

7pm - GLSO Board Mtg. (4th Mon.) *New Date*
7pm - Lexington Lyons (2nd Mon.)

Saturday:

7pm -LexDGA 1st Sat.

Sundays:

4pm- Integrity (2nd Sun)
4pm- Gen Y Integrity (3rd Sun)

More information about many of the events are in this newsletter. You may want to call or email the group to confirm the date and time, see the directory on back page.

Pride Center may be abbreviated - PC

Call for Place may be abbreviated- Call

Opening at the Kentucky Theater October 13

Graham Norton

Scott Thompson

Darryl Stephens

Ant

Lypsinka

Matthew Rush

James Getzlaff

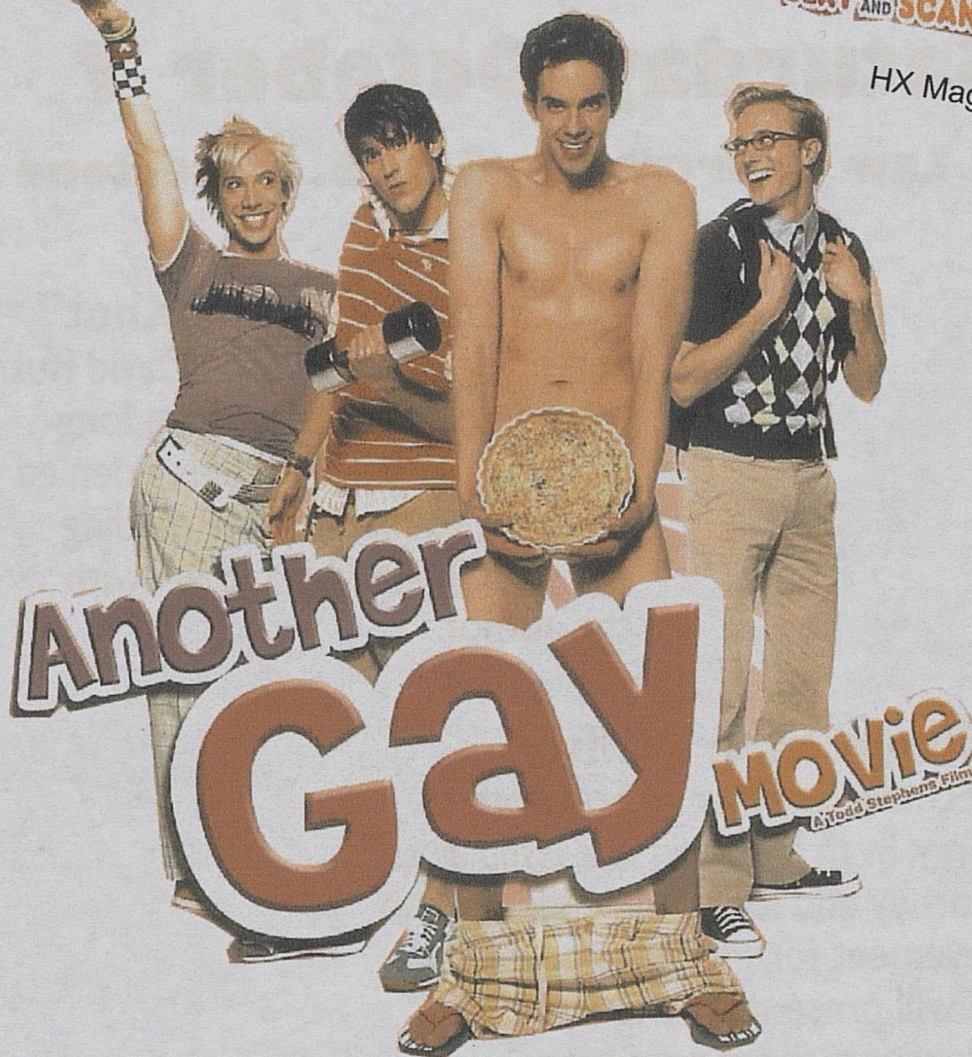
Richard Hatch

"A REFRESHINGLY **CRASS**, VERY **FUNNY**
GAY SPOOF OF **TEEN SEX ROMPS!**"

Michael Musto, Village Voice

"**HOT**, **FILTHY**, **FUN**,
SEXY AND **SCANDALOUS!**"

HX Magazine



**Our web site is up and running.
Log on to sign up for free movie updates!
www.kentuckytheatre.com**

THE KENTUCKY

214 E. Main St. + 231-6997 + www.kentuckytheatre.com

FREE PARKING weeknights and all day Sat/Sun + City Hall Annex Garage next to Police Dept.

Put this up o your fridge for a handy reminder.

Kentucky Fairness Alliance Bluegrass Chapter Presents

Marriage Equality Matters!

Saturday, October 7

UK Law Courtroom, 620 S. Limestone

1:00 pm: "Tying the Knot"

A reading of the play by David Rush that looks at the effects on long-term relationships of being denied the right to marry. The reading will be followed by a Q&A with the author.

3:00 pm: Evan Wolfson

Executive director of Freedom to Marry, Evan Wolfson is a civil rights attorney and longtime leader of the movement for marriage equality. He will present on this issue following a short reception.

Kentucky Fairness Alliance Bluegrass Chapter
PO Box 22032
Lexington, KY 40522-2032
(859) 806-4114
<http://www.bluegrassfairness.org/>

Kentucky Fairness Alliance

KFA, our state wide activist organization, is celebrating the progress we have made in the state toward domestic partner benefits in state universities. Even the Family Foundation of Ky proclaimed on the cover of their September/October *Citizen*, "The homosexual agenda is apparently on the move in the Commonwealth." Thanks for noticing. We think so too.

The University of Louisville Board of Trustees voted in July to extend domestic partner benefits to faculty and staff. Within a week the University of Kentucky's spokesperson Jay Blanton said UK would consider the issue. By the end of August,

officials at Northern Kentucky University joined the conversation. Faculty Senate President Bill Oliver said making those benefits happen is his goal for the year.

In September the U.K. Board of Trustees human resources committee gave the go-ahead for further consideration of DP benefits, and the Faculty Senate endorsed UK's plan by a greater than 2-1 margin. Western KY University President Gary Ransdell said WKU's University Senate, Administrative Council and other groups were likely to address the topic in the coming months.

KFA thanks and congratulates the campus leaders who recognize a fair workplace is essential in the 21st Century. We are definitely on the march.

RELIGION GONE BAD

Review of a new book by Mel White

The Reverend Mel White, bestselling author of *Stranger at the Gate*, has just published a new book, *Religion Gone Bad*, an exposé of the Christian Right. Before coming out as a gay man, White served the evangelical movement as pastor, professor, filmmaker, television producer, author, and ghostwriter for fundamentalist leaders Pat Robertson, Jerry Falwell, and Billy Graham, all of whom he got to know well. He writes, "These are not just Neo-cons dressed in religious drag. These men see themselves as called by God to rescue America from unrighteousness. They believe this is a Christian nation that must be returned forcibly to its Christian roots."

Religion Gone Bad documents the thirty-year war that fundamentalist Christians have waged against GLBT people. But that is only part of the story. White states: "I also hope I can persuade you that the struggle for "gay rights" is the next stage in the broader struggle for civil rights in this country. Consciously or unconsciously, fundamentalist Christians are using their anti-homosexual campaign to test how much intolerance the American people will tolerate."

White believes that the true goal of today's fundamentalists is to break down

the wall that separates church and state, superimpose their "moral values" on the U.S. Constitution, replace democracy with theocratic rule, and ultimately create a new "Christian America" in their image.

He suggests ways we can resist these efforts by educating ourselves and our communities, by becoming effective activists, and through simple conversations we have with our friends and co-workers.

The Architect

Karl Rove's Gay Connection

Another recently published book, *The Architect*, by James Moore and Wayne Slater, reveals that Karl Rove, Pres. Bush's chief political strategist, was raised by his gay stepfather. After realizing that he was gay, Louis Rove was divorced from Karl's mother in 1969. According to this book, Karl and Louis continued to have a warm and respectful relationship.

Karl Rove has been working his entire life to put Republicans in office and one of his favored techniques has been the exploitation of homophobia. Carl accepted his step-father for who he was but has no problem using GLBT people as scapegoats in his strategies to ensure Republican power. Sadly we are not surprised.

EX-GAY ORGANIZATIONS

some ideas about curing lesbians

The National Association for Research and Therapy of Homosexuality (NARTH) is a non-profit, educational organization "dedicated to affirming a complementary, male-female model of gender and sexuality."

NARTH was formed partly in response to the American Psychiatric Association's decision to remove homosexuality from its list of mental disorders in 1973. Some mental health professionals voiced opposition; they continue to see a need to "help" GLBT people "straighten up."

This organization's web site differs from other ex-gay organizations in that it is not as religiously oriented and has more articles and studies written by educated men and women. They also include articles from a wide variety of sources, including *The Advocate*.

The scientific tone and inclusive approach is little more than a veneer, however. From their web site "NARTH is

composed of psychiatrists, psychologists, certified social workers, professional and pastoral counselors and other behavioral scientists, as well as laymen from a wide variety of backgrounds such as law, religion, and education." Their stated mission: "Helping clients bring their desires and behaviors into harmony with their values."

I find this site disturbing because of the scientific veneer and because I know it is part of the larger attempts to portray us as sick and to slow our progress towards equal rights and acceptance.

Andria L. Sigler-Smalz is a Clinical Pastoral Counselor and the founder and Director of Journey Christian Ministries. She wrote a paper posted on the NARTH web site titled *Understanding the Lesbian Client* which I find particularly disturbing. She pathologizes lesbians (presents us as mentally ill) in ways that could sound reasonable to some lesbian women who turn to her or other therapists for help.

She discusses issues such as enmeshment, that could be said to be true for many people whatever their sexual orientation. And she presents these issues

...continued on next page

"Whether buying or selling - call me for your real estate needs!"

Experience Doesn't Cost...It Pays!
Personal Service You Deserve
ABR - Accredited Buyer Representative
GRI - Graduate, Realtor Institute
Committed To Premier Service



Teresa Combs, ABR, GRI
Commonwealth GMAC Real Estate

843 Lane Allen Rd

Lexington, Ky 40504

Office: (859) 278-1606

Fax: (859) 245-5156

Cell: (859) 489-1150

Email: tcombs@commonwealthgmac.com



PREMIER SERVICE®

as problems inherent in all lesbian relationships. The following paragraphs are taken from her article.

"For the female homosexual, "emotional attraction" plays a more critical role than does sexual attraction. ... holding and affection may be more highly valued than sexual relations.. The propelling drive in the lesbian relationship is the woman's same-sex emotional and nurturing deficits," *Why does she assume that a desire for affection is based on a deficit? Don't many people want affection in their relationships? .*

"Within (lesbian) relationships there appears to be a capacity for particularly strong attachment. However, a closer look reveals behaviors that indicate a fragile relational bond ridden with fear and anxiety," *Falling in love with a woman could certainly provoke fear in a woman raised as a fundamentalist.*

"While lesbian partnerships generally are of longer duration than male relationships, they tend to be fraught with emotional intensity and held together by the "glue" of jealousy, over-possessiveness and various manipulative behaviors. Excessive time together, frequent telephoning, disproportionate card or gift-giving, hastily moving in together or merging finances, are some of the ways separateness is defended against. In such relationships, we see the counterfeit of healthy attachment--that is, emotional dependency and over-enmeshment."

"There is often a desperate quality to the emotional attraction in women that struggle with lesbianism. It is not unusual for a lesbian couple to increasingly reduce contact with family members and previous friends. This gradual withdrawal serves to insure control, and protects against separateness and perceived threats to their fragile bond."

If one partner in any relationship is pushing for reduced contact with others, I would suspect that this was part of an emotional and perhaps physical abusive relationship. Some gay and lesbian relationships are abusive, we learned it from our heterosexual parents. Or, it could be that

a couple withdraws from non-supportive family members.

"The therapist must assess her (client's) personality organization. For example, does she have the separation-individuation conflicts of a borderline, the fragile self-esteem of a narcissist, or the attachment fears of a schizoid? Understanding the core conflicts will provide the therapist with the meaning behind her behaviors." *So many fun ways to label us!*

"Also important to notice is the degree of the client's compulsive or obsessive feelings, thoughts and behaviors. The higher the compulsivity, the more anxiety and/or depression may surface as the client begins to separate from her lesbian partner or chooses to not "act out" their same-sex emotional attractions. This is often the most difficult part of treatment and strongly resembles the treatment required with a person struggling with substance addiction.

Falling in love, particularly as part of coming out, can certainly feel obsessive. But it is not mental illness, it is opening a closed part of ourselves to the light. And by "act out their same sex attraction" I assume she means making love. Or maybe just holding hands would qualify. Clearly, when we express our love for each other it is seen as an addiction, when heterosexuals express love it is natural and fulfilling. Give me a break.

The duration of treatment is generally of a long-term nature, and many benefit from two to three sessions per week, depending on the level of functioning of the client. *Two or three sessions per week would certainly help the brain washing process she calls therapy. And I can imagine her clients becoming depressed as she convinces them of their "unhealthy tendencies."*

In my work with women, I have found it to be a slow and arduous process. Because the lesbian struggle is a symptom of a woman's inner pain, attaining the capacity for healthy same-sex relationships and opposite-sex relating is a manifestation of inner healing and growth. *Or of denial and shame - sounds lovely doesn't it?*

October 11 - Coming Out Day

If you have been out for a while, you may think that coming out has become easier. We certainly have more role models, more activities and "more "queer space." We are represented in films and on TV, and the characters are diverse even if sometimes stereotypical. We are making progress in our work for civil rights.

But people still may have to face internal confusion, fear and shame, religious trauma, rejection by loved ones, and many other difficulties. Every year I have worked with the ten's in our Gay Straight Alliance there has been at least one youth threatened with possible homelessness

Therefore, there continues to be a need for the GLSO Pride Center and the many activities it supports. If you are reading this by picking up a free copy, would you please make a donation to cover the cost of its production?

If 40 people became new subscribers, that would pay our rent for one month. If 100 of you made donations averaging at \$20, that would pay our utilities for half a year. With over 22,000 GLBT people in this city, we should be able to have a large Pride Center with many activities and services. If you have time to donate, there is a list of volunteer opportunities on page 6.

The GLSO Web Site www.glsopc.org

We need your financial support to keep the Center open and to continue these community based projects.

Pride Library **The Gay Straight Alliance for Youth**
ActOut Theatre Group **GLSO Discussion Group**
The Dress & Gender Alliance **Pride Month**
Speakers Bureau **Lexington Insight** **Pride Picnic**

Name : _____ Phone: _____

Address: _____

City: _____ State: _____ Zip: _____

- \$20 -1 year Membership & Newsletter for Individuals or Couples
- I would like the newsletter at this reduced rate \$
- I am enclosing an additional contribution of \$

Please mail to: GISO News PO Box 1172 Lexington, KY 40588 1172

Religious and Spiritual Resources

Jubilee Fellowship

Jubilee Fellowship of Lexington welcomes members of the GLBT community and their friends to join us in growing as a community of believers in Christ who are fanatical about loving people with God's unconditional love. We hold Sunday worship at 11 am and hold a Friday night prayer meeting at 6 pm.

If you have questions about our fellowship please contact Pastor Cori Wood at jfellowship@aol.com or call 859 5514-5518. We have a big vision and a big God. There is room for you.

Integrity

St. Michael's Episcopal Church

Integrity is a support group for GLBT people and friends that meets at St. Michael's Episcopal Church on the second Sunday of the month at 4 pm (Aug 13th). We have lively discussions about everything from current events to spiritual growth. Everyone is welcome to attend.

On the third Sunday (Aug 20), our new group Gen Y Integrity meets at 4 pm. This group is for young adults ages 18 through 30. Please join us at St Michael's, 2025 Bellefonte Dr., in Lexington. For more info call 859 243-0998 or email stmintegrity@yahoo.com. You are also welcome to attend our worship service each Sunday.

Quakers

The Lexington Friends (Quakers) invite you to our Sunday Service at 10:30 am. We are located at 649 Price Ave, between 6th and 7th, parallel to N. Broadway. Quakers have no clergy or sermons and we believe that all of us have access to spiritual truths within ourselves.

Our services are different from most religious groups - we sit together in silence until someone is lead to speak from that silence.



Unitarian Universalist Church

The Unitarian Universalist Church of Lexington is a welcoming Congregation. We do not simply accept GLBT folks within our church community, we celebrate their lives. There are two worship services on Sundays, at 9 am and at 11 am. There is a Buddhist study group (Sanga) that meets in between the two services at 10 am on most Sundays.

There is Children's Religious Exploration every Sunday during the second service. We probably have more than the average number of children with gay/lesbian parents within our youth population. I am particularly proud of the teens that I work with at church for being GLBT allies, several of them are part of the GSA's that have started in most of our public high schools.

On Wednesday evenings there are Adult Religious Exploration classes offered. Non-members are welcome, you can drop in on any of these classes. World Religions using a book by Huston Smith will meet for 9 weeks. On Oct. we will be discussing Buddhism, followed in order by Confucianism, Taoism, Islam, Judaism, Christianity.

Expanding Compassion is a series of films chosen to deepen understanding of the interconnected web of life. On Oct 4, we will be viewing and discussing *Peaceable Kingdom*, which explores the lives of farm animals, farmers, and animal rescuers struggling to make our factory farm system more humane. A third film, *The Witness*, is also about animal rights advocacy and will be shown on Oct. 11.

For something different, there is a class offered on IFA, the nature centered belief system originating with the Yoruba people, brought to South and Central America during slavery times, and practiced today by many people. This class will start on Oct 11 and continue through October.

St. Mychal the Martyr Parish

Sunday Worship 10:30



Saturday Evening Prayer 5 pm

1350 Eastland Dr. #5
(859) 389-9418

www.stmychalthemartyr.org

St. Mychal The Martyr

The mission of St. Mychal the Martyr Parish is to provide a church that welcomes all people in all their uniqueness and giftedness. We are a liturgical church whose worship is filled with ritual and whose heart is filled with joy and hope.

You are invited to our worship services every Sunday at 10:30 with Rev Ken Waibel performing mass. We also hold Saturday Vespers at 5 pm. We are located at 1350 Eastland Dr., Suite #5, off Winchester Rd.

St. Mychal is a member of the Orthodox Catholic Church of America, a national denomination that is gay supportive. We perform blessings of gay unions, welcome divorced people, and ordain women into the orders of Deacon, Priest and Bishop. The Orthodox Catholic Church is one of about three dozen offshoots of the Roman Catholic Church. For information visit : stmychalthemartyr.org.

St. Mychal's has space available for meetings and receptions. Call 859 389-9418 or email kypadre@aol.com for more information.



Couples
Counseling

Union
Ceremonies

Rev. Kenneth Waibel

Professional Spiritual Direction

*Ecumenical * Holistic * Inclusive*

kypadre@aol.com
(859) 338 - 1195

CROSSINGS Lexington

117 N. Limestone
859 233-7266

presents

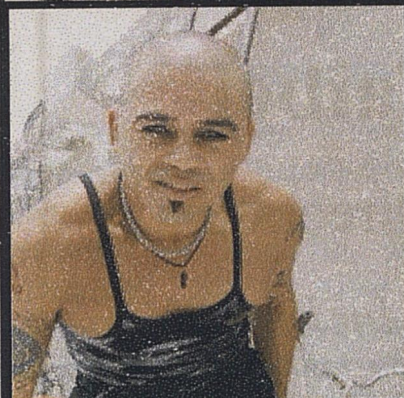
LIPPS

Leather-Night, Internet Meet /Greet
and Pride Party Saturday!

Drink Specials

Raffle Prizes

Boot Black sponsored by The Louisville Trail Blazers



LOAD UP YOUR FRIENDS
AND MAKES PLANS TO ATTEND
SATURDAY, OCTOBER 7, 2006

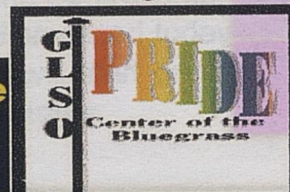
9:00 pm

\$3.00 Door-Cover will benefit the
GLSO Pride Center of the Bluegrass!

You've Connected
On-Line



Make That Live
Connection
Tonight!



Directory

GLSO Board:

GLSO Pride Center (Bill).....253-3233
 GLSO Board (Thomas).....225-3035
 Discussion Group (Bill)253-3233
 GLSO News (Mary).....266-5904
 Subscriptions (Bill).....253-3233
 Speakers Bureau (Mary).....266-5904
 Youth, Gay Straight Alliance (Mary).....266-5904
 GLSO on-line.....lexingtonglso@yahoo.com
 orwww.webspawner.com/users/glsoqxn
 Pride Gallery (Thomas).....225-3035

Student Groups:

EKU Pride Alliance.....alliance@yahoo.com
 UK Lavender Society.....uklavender@yahoo.com
 Moorehead State Univ. (Ned).....606 783-2294
 UK Lambda (Sara & Dave) info@uklambda.com
 Berea College ACE League (Ryan) 859 985-3633
 Centre College (BGLAD-Mykol).....238-5332

Anonymous HIV Testing:

Jessamine County.....885-41 49
 Lexington, Fayette County.....288-2437
 Madison County.....859 723-7312
 Woodford County.....873-4541
 U.K. Adolescent Medicine.....323-5643

HIV/AIDS Info/Services:

AVOL, AIDS Volunteers Inc.225-3000
 Lexington Health Dept. (Julie).....288-2362
 HIV/AIDS Legal Project.....502 584-1254
 HIV Support (Somerset).....679-7478 or 678-5814
 Cumberland Region (SEKY-Pat).....606 864-3776
 or 888 425-7282
 Barren River Region.....800 559-4448
 Louisville Region (Geri).....502 574-0161
 Northern Kentucky Region.....859 341-4264
 Purchase Region.....800 522-8289
 Moveable Feast Lex. Inc. (Terry).....252-2867

Community Groups

Alcoholics Anonymous (Ron).....948-0434
 Office.....276-2917
 Al-Anon (office).....277-1877
 Bluegrass C.O.L.T.S. (Morris).....225-9169
 Bluegrass Fairness.....859 806-4114
 Council for Peace & Justice (Richard) 277-6101
 Fairness of Louisville.....502 893-0788
 First Link (formerly-Ask Us).....313-5465
 International Gay Bowling (Steve).....276-3058
 I.C.K. (The Imperial Court of KY).....859 269-7756
 imperialcourtkentucky@yahoo.com
 Kentucky Leather Productions (Larry).....253-0185

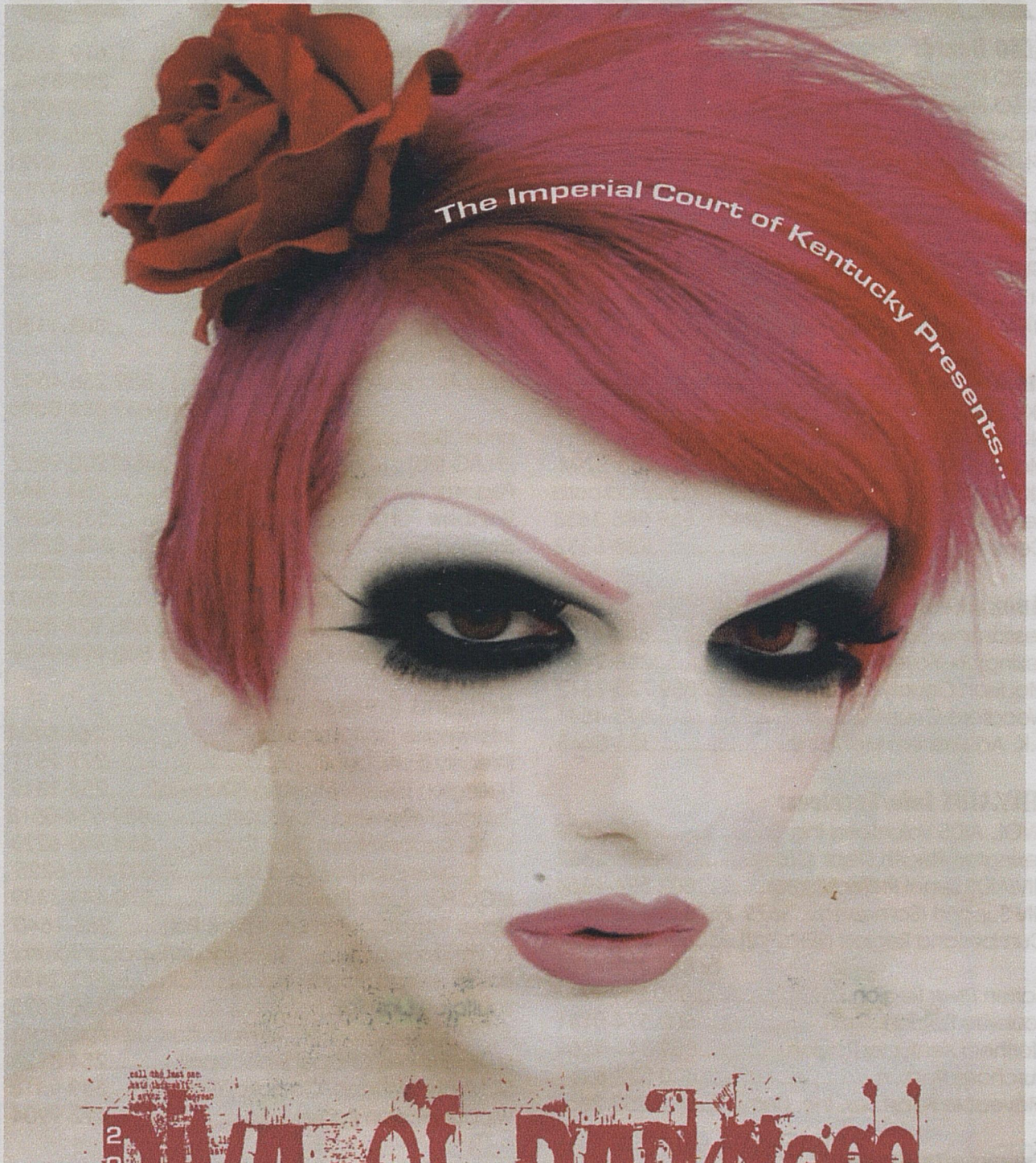
Lex. Lyons Leather/Levi Club (Paul).....619-3650
 Lex. Diversity In Gender All.288-5143
 Lex. Human Rights Commission.....252-4931
 Lex. Men's Chorus (Kenneth).....255-1974
 Lex. Men's Insight Group(Joesph).....859-523-4921
 Louisville Youth Group.....502 894-9787
 MACT Men of All Colors Together (Jon)....351-4453
 mactky@aol.com
 Moonshine Bears of Kentucky (Jim)...859 299-2047
 www.moonshinebears.com
 People for Unity & Fairness.....803-1130
 CUFCCKT@aol.com
 Pride Alliance of Central KY. (Gary) ..859 236-4547
 (Shane) 859 854-0596
 pridealliance@yahoo.com
 PFLAG (Ed).....(859) 200-9512
 Pegasus Travel.....253-1644
 Rainbow Families of Lex. (Cheryl).....533-6309
 Sienna (Gender Identity Issues).....502 346-5298
 SisterSound (Patti).....806-0243
 Sisthas in the Life (Joan).....252-2657
 24 hr. Crisis Line.....1 800 928-8000
 24 hr. Teen Crisis Line.....1 800 999 9999

Religious Groups:

Interweave (Unitarian-Mary).....266-5904
 Integrity (Episcopal).....277-7511
 Lexington Friends Meeting (Quakers).....254-3319
 Jubilee Fellowship (Rev. Cori).....859-514-5518
 MCC Elizabethtown (Rev. Cathy).....888 340-6223
 MCC Louisville (Rev. Dee Dale).....502 587-6225
 MCC Paducah (Rev. lillian).....270.443-3339
 Norse Pagan Community (Rev. Pat).....268-1640
 KY Pagan Forum http://go.to/kypaganforum/
 RainbowWind (Pagan-Sarah).....273-2455
 Soulforce (Jamie).....859 230-5625
 www.soulforcekentucky.org
 St. Augustines Chapel (Episcopal).....254-3726
 St. Mychal (Indep. Catholic) (Rev. Ken) ..389-9418
 Wiccan/Pagan (Iggie).....492-9904

GLSO News Deadline
OCTOBER 15
 Please send all articles, ads and
 directory information to:
 lexingtonglso@yahoo.com
 marycrone@insightbb.com
 Please put Newsletter in the subject line.

GLSO RAINBOW SPONSOR



The Imperial Court of Kentucky Presents...

2006
DIVA OF DARKNESS
PAGEANT

WEDNESDAY, OCTOBER 25TH

THE BAR COMPLEX

DOOR @ 8:30, SHOW @ 9:30 \$5

Proceeds to Benefit the Charities of the Imperial Court of Kentucky