

## Centralized ADD-DROP to be held Tuesday

Some simple guidelines make schedule adjustment painless

By SCOTT ROBINSON  
Associate Editor

For the countless students who will converge on Memorial Coliseum to adjust their class schedules, many time-consuming and confusing problems may arise if one is not prepared.

ADD-DROP, the process by which class schedules are adjusted for changes in students' academic needs, is at best a madhouse if students are not sure of how to have their schedules processed quickly and efficiently.

However, a forewarned student who knows what to expect and who follows a few simple guidelines will find the procedure much quicker and less painful.

Before coming to ADD-DROP, have a good idea of what you're adding and what you're dropping. Plan ahead. Once you're sure what you need, pick up a computer card (such a card is required for each class change) at the department tables, located on the concourses and central floor of the Coliseum.

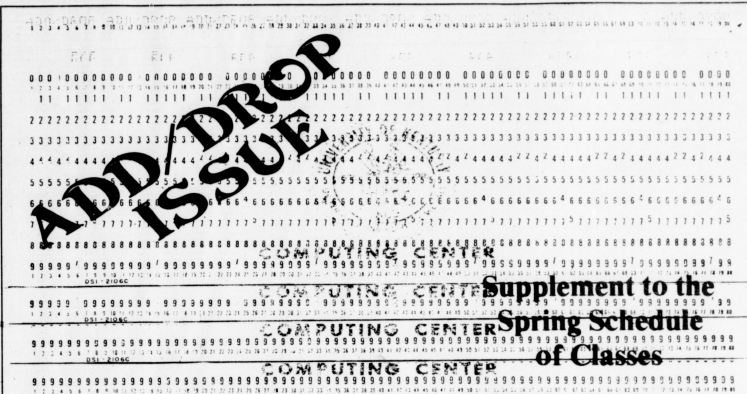
You'll also need one ADD-DROP slip — and only one — to complete all your schedule transactions. Each ADD-DROP slip has space for seven class changes.

The computer cards are required for the section where your class change is. If you add in a particular section, you need a computer card for that section. These cards, which will be read by computer, must be filled in with a No. 2 lead pencil. They must each be filled out completely, including the student's name and social security number.

In addition to these steps, here are a few things students should remember:

- ✓ Have a student ID at all times.
- ✓ Pick up an instruction sheet provided at the gate. It includes a map of the Coliseum, pointing out the location of tables for every section. It will also provide step-by-step instructions for every schedule transaction.
- ✓ Pick up an IBM preprint. One such card is assigned to every student. These cards are kept at the entrance, and each student must have this card to enter ADD-DROP.
- ✓ Pick up an ADD-DROP slip. Remember, one is all you need.

George Dexter, UK associate registrar, provided other suggestions. "Add before you drop," he advised. This will improve both the efficiency of the process as a whole and make things quicker



Supplement to the  
Spring Schedule  
of Classes

### Centralized ADD/DROP

Advance registered students who wish to add or drop classes should report to Memorial Coliseum on Tuesday, Jan. 13, at the time corresponding with their last names. Students may arrive late, but will not be admitted before their appointed time.

Tuesday, January 13, 1981

10:00 Bm-Che	1:00 Mc-O
10:30 Ch-Di	1:30 P-Ri
11:00 Dj-F	2:00 Rj-Sm
11:30 G-Hh	2:30 So-U
12:00 Heo-Kh	3:00 V-Z
12:30 Ki-Mb	3:30 A-BI

### Dates to Remember

**Jan. 12** - Registration for new students who have not advanced registered. Student Center Ballroom open for payment of fees, ID pictures and validation through Friday, Jan. 16. Remaining parking stickers may be obtained at the UK police station.

**Jan. 13** - Centralized ADD-DROP for advance registered students. Last day a student may officially drop a course or cancel registration with the Registrar for a full refund of fees.

**Jan. 14** - Class work begins.

**Jan. 14-20** - Late registration for returning students and new applicants cleared late for admission. A \$20 fee is charged to students who register late.

**Jan. 20** - Last day to enter an organized class for the Spring Semester. Last day to officially withdraw from the University and receive an 80 percent refund.

**Jan. 27** - Last day for students to pick up ID cards from Photographic Services in order to avoid replacement fees. Last day for payment of registration fees in order to avoid cancellation of registration.

**Feb. 3** - Last day to change grading option (pass-fail to letter grade, letter grade to pass-fail, credit to audit or audit to credit). Last day to drop a course without it appearing on the student's transcript.

**Feb. 5** - Last day for reinstatement of students cancelled for nonpayment of fees. Requires payment of fees plus \$50 reinstatement fee.

**Feb. 12** - Last day for filing an application for May degree in College Dean's office.

**March 5** - Last day to drop a course. Last day to withdraw from the University or reduce course schedule and receive any refund.

**March 16-21** - Spring vacation

**April 13-22** - Advance registration for the 1981 Fall Semester and both Summer Sessions.

**May 1** - End of class work.

**May 4-8** - Final examinations.

for the individual. He also suggested that every student confer with his or her advisor before making any changes.

Other good ideas: hang onto your copy of the ADD-DROP slip for future reference, to verify classes you have added and dropped should the need arise. Double check your social security number every time you write it.

Arrive at your appointed time (see sidebar). Students are processed alphabetically. While it might be smart to arrive a little early to beat the line, no student will be admitted before his or her appointed time. They may, however, arrive late.

Other transactions that can be made at

this time include adjusting the number of credit hours for variable courses and changing grade options, which include audit, pass-fail, and letter grade. Note: it should be mentioned that students should not, when changing from letter grade to pass-fail, take more than the three pass-fail options allowed by the University.

Dexter notes that as many as 6,000 students will probably make use of ADD-DROP. Not all of these will be for adding and dropping, but the smart student should expect a large crowd and come prepared. ADD-DROP opens at 10 a.m. on Tuesday.

### Under the wire

Numerous deadlines will keep many students busy

By LISA WALLACE  
Assistant Entertainment Editor

Students at UK are used to having deadlines imposed on them in classes and registration for a new semester brings with it another set of deadlines students should be aware of.

Advance registered students who did not pay fees by mail may do so Jan. 12-16 in the Student Center Ballroom. Tables will be arranged alphabetically for this purpose.

Late registration will be conducted Jan. 14-20 for returning students who did not advance register and new students whose enrollment was processed late. These students should report to the Mezzanine of the Patterson Office Tower between 8:30 a.m. and 4:00 p.m. on Jan. 14-15, and at 204 Miller Hall from Jan. 16-20.

Registration will be on a first-come, first-serve basis. Eligibility will be determined at this time. A student will be ineligible to register if he remains delinquent in any fee payment or if academically ineligible.

A \$20 late fee will be charged. Students who late register may pay their

fees through the last day payments will be taken, Jan. 27.

The deadline for withdrawal from the University, changing to part-time status, or reducing credit hours in order to receive a full refund of fees is Jan. 13. Jan. 20 is the deadline for withdrawing or dropping a course to receive an 80 percent refund. After March 5, no money will be refunded to students withdrawing or reducing credit hours.

Students who failed to pay registration fees by Jan. 27 may be reinstated until Feb. 5. A charge of \$50 will be required for late payment and reinstatement charges.

IDs may be picked up without a replacement fee until Jan. 27. Validations will be made at the time of fee payment. If students pay their fees before picking up their IDs, they should bring their receipt to photo services in order to get a validation sticker.

Late registering students may have IDs validated at the cashier's desk at the Billings and Collections office, Service Building, Room 220.

Assistant manager of Billings and Collections, Ben Crutcher said that some

delay may be expected for students who are paying fees after Jan. 16. Processing is done on a monthly basis and students who do not present proof of payment, or whose cancelled checks may have to wait for a validation sticker.

Crutcher advises that students take care of fee payment at the Student Center if possible to avoid hold-ups.

Health fees for the Spring semester may also be paid in the SC Ballroom. The fee is \$21 for the semester. Deadline for payment of the health fee is Feb. 5. After Jan. 16, payments may be made at the Billings and Collections office or at the Health Services office in Annex 4. The Health Services office accepts checks only.

Students may sign up for insurance coverage in the SC Ballroom during fee payment week. Those already enrolled will be billed for payment.

A representative for Blue Cross-Blue Shield will be in the ballroom from 9 a.m. to 3 p.m. all week. A student desiring to enroll in an insurance program, who is not registered for hours with the University, must obtain authorization from the Health Services office.

Meal cards will be validated for the

Spring semester upon receipt of fee payment. Students who paid by mail will be validated upon their return to UK. Food services will validate meal cards in the Student Center during fee payment week.

The deadline for changing meal plans is Jan. 23 and may be done in the Housing office of the Service Building. New cards will be issued to students who have never had a meal card in the Ballroom until Jan. 16. Lost meal cards may be replaced for a fee at the Food Storage office.

Parking stickers are still available and may be obtained at the UK police station on the corner of Rose and Euclid Avenues. Permits are issued on a first-come-first-serve basis.

According to Ruth Hastie of the parking permits office, there are some R3 stickers available, but very few C permits remain. The cost for a commuter permit is \$10. Residence hall parking stickers are free.

Students should keep their IDs with them during registration and fee payment as well as receipts in order to avoid delays.

### Winter wonderland

## Cold weather forecast should alert students to dress warmly

By LISA WALLACE  
Assistant Entertainment Editor

Kentucky winters are almost as unpredictable as Kentucky basketball, and the best way to survive the winter at UK is to prepare yourself for the worst it has to offer. Forecasts so far have predicted a winter season with less precipitation but much colder than normal temperatures.

Dressing warmly is good common sense, and it helps in the battle against colds and flu. Patty Medbury of Student Health Services advises that students wrap up whenever they go outdoors this winter, even for a short time.

Medbury said that a great percentage of body heat is lost through the head, so wearing a hat will keep you warmer. Although frostbite is a rare occurrence, a severe case can cause irreparable tissue damage. The fingers and toes are most apt to be affected by frostbite; gloves, thick socks and waterproof shoes or boots are a must.

The body is more susceptible to colds during the winter because its natural resistance to viral infections may be lower. Maintaining a proper diet is

essential in order to ward off colds. Students should avoid the temptation to skip meals and grab something out of vending machines because of cold conditions.

Eating balanced meals with containing selections from the basic four food groups will greatly decrease the chances of catching a cold. On the other hand, boredom may cause some to while away the hours nibbling on Hershey bars or chips. Medbury warns students not to significantly increase their intake of carbohydrates (sugars and starches). "A lot of fat isn't the best way to keep warm," she said.

Ordinarily, if students eat properly, vitamin supplements are not necessary. However, if you know you aren't getting enough vitamin C, for instance, one vitamin C tablet a day will satisfy the body's requirement.

When winter weather sets in for good, outside activities may be hampered. Remaining indoors for long periods of time causes some people to feel lethargic and depressed. "Cabin fever" may pose problems for a few students, but some simple suggestions from student health services may help some cope a little better.

Dr. J. Jones advises students to stick to established schedules and not to give up going to classes. "Classes are rarely cancelled at UK due to the weather," she said. "Planning something to do every day, even just going to classes will be at least a change of scenery."

She also suggests staying in close contact with friends and to plan activities with people whose company you enjoy, even if your mood makes you feel un-

social. A creative passtime that you can measure progress by is both entertaining and, depending on the particular diversion, educational.

Reading, handicrafts, indoor sports,

## Checks for financial aid recipients will be issued daily through Friday in Student Center

By SCOTT ROBINSON  
Associate Editor

The checks themselves are dispersed in the second line, and are issued by Billings and Collections. Upon presentation of the student's authorization slip, he or she is presented the check by a cashier.

The financial aid station will open at 9 a.m. daily, and will close at 3 p.m., an hour before most other stations in the Ballroom.

Students who applied late for financial aid, or wish to apply, or have not yet been notified as to their financial aid status should check with the Financial Aid Office later in January. The office is

still processing applications and will continue to accept applications until funds are no longer available.

No evaluation of applications will be made during the first week of school. No notifications will be sent after classwork begins. Students with questions or those wishing verification on their aid status should check with the office.

Students who do not pick up their checks during this week should first go to the Financial Aid Office to collect an authorization slip. This slip should then be presented at the Billings and Collec-

tions Office, Room 220, Service Building, where the check will be issued.

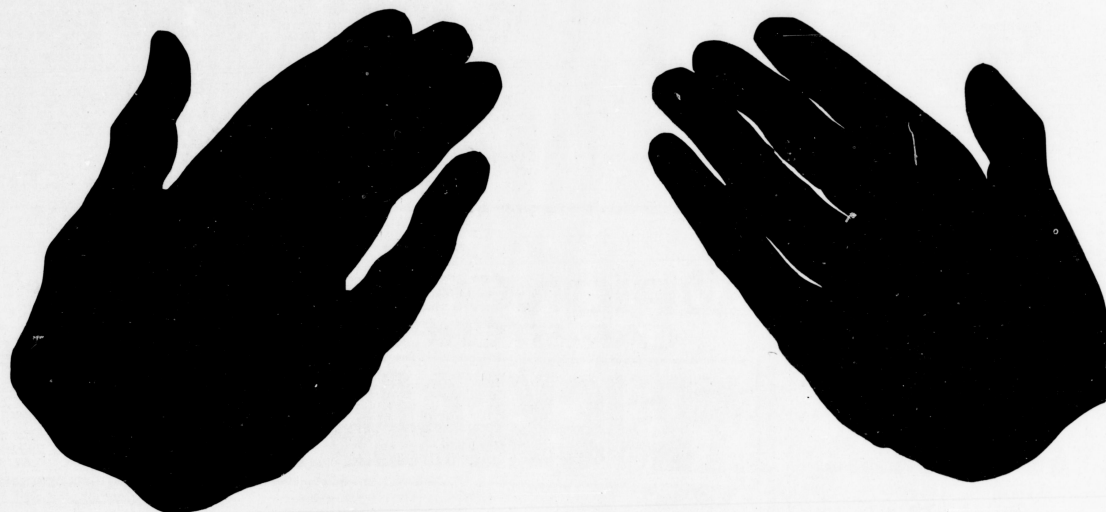
Collecting the checks in the Ballroom is, like any other service in the Ballroom, one that involves standing in line. Past observation, however, reveals that the lines die down after Monday and Tuesday.

As to the student's on-the-spot requirements, there are none. The Financial Aid people have everything they require.

"All they need," Halsey said, "is an ID."



# Donate A Helping Hand For The New Year....



## Give The Gift Of Life

At *ALPHA PLASMA* you receive \$10 every time you help save a life. All you have to do is sit back and relax while you strengthen the plasma supply desperately needed by victims of disease and injuries. So come in today and donate a precious gift to someone who needs it.

**Don't Forget!**  
**\$5 Bonus With U.K. I.D.**  
(on second donation)

# ALPHA PLASMA

313 E. Short St.  
252-5586

Hours: 7:30 a.m. to 3:00 p.m.  
Monday - Friday  
9:00 a.m. to 2:00 p.m.  
Saturdays



College of Arts and Sciences - Continued

#ENG 102 006 #ENG 102 072 #ENG 103 022 ENG 201 001 ENG 363 001  
 \*26395 ENG 161N091 INTRODUCTION TO LITERATURE 3 TR 0600-0715PM CB 331 REED  
 \*90328 ENG 222N091 SURVEY OF ENG LIT II 3 TR 0600-0715PM CB 204 MABRY

FRENCH LANGUAGE AND LITERATURE

#FR 011 001 FR 101 009 FR 106 001 #FR 201 006 #FR 261 001 #FR 406 001 FR 604 001  
 FR 010 001 FR 101 010 #FR 121 001 #FR 202 001 #FR 305 001 #FR 412 001 FR 615 001  
 #FR 101 006 #FR 101 011 #FR 122 001 #FR 202 006 #FR 306 001 #FR 550 001 FR 768 001  
 #FR 101 007 #FR 101 012 #FR 201 001 #FR 202 007 #FR 395 001 #FR 603 001 FR 769 001  
 FR 101 008 FR 102N091 #FR 201 002 #FR 203 001

\*91723 FR 101 011 ELEMENTARY FRENCH 3 MWF 1200-1250PM CB 208 STAFF  
 \*91731 FR 101 012 ELEMENTARY FRENCH 3 MWF 0100-0150PM CB 207 STAFF

GEOGRAPHY

GEO 151 001 GEO 152 003 GEO 252N091 GEO 450G001 GEO 536 001 GEO 643 001 GEO 715B002  
 GEO 151 002 GEO 152N091 GEO 255 001 GEO 480 001 GEO 540 001 GEO 655 001 GEO 768 001  
 GEO 151N091 GEO 251 001 #GEO 305 001 GEO 505 001 GEO 542 001 GEO 700 001 GEO 769 001  
 GEO 152 001 GEO 252 001 GEO 405 001 GEO 521 001 GEO 560 001 GEO 707 001 GEO 771 001  
 GEO 152 002 GEO 252 002 GEO 430G001 GEO 522 002 GEO 630 001 GEO 715A001 GEO 772 001

GEOLOGY

GLY 144 001 #GLY 210 001 GLY 240 005 GLY 420G001 #GLY 531N091 #GLY 653 001 GLY 681 001  
 GLY 144 002 #GLY 240 001 GLY 242 001 #GLY 461 002 #GLY 540 001 #GLY 654 001 #GLY 703 001  
 GLY 144 003 #GLY 240 002 GLY 341 001 #GLY 461 003 #GLY 571 001 #GLY 655 001 #GLY 768 001  
 GLY 145 002 #GLY 240 003 #GLY 395 001 #GLY 515N091 #GLY 615N091 #GLY 660 001 #GLY 769 001  
 GLY 146N091 GLY 240 004 #GLY 401 001 GLY 530 001 #GLY 620 001 #GLY 662 001

\*91324 GLY 531N091 IGNEOUS & METAMORPHIC GEOCHEM 3 TR 0730-0845PM BOW 51 BLACKBURN

GERMANIC LANGUAGES AND LITERATURES

GER 011 001 #GER 101 006 #GER 102 007 GER 201 002 GER 204 001 GER 319 001 GER 553 001  
 GER 101 001 GER 102 001 GER 102 008 GER 201 003 GER 261 001 GER 319 001 GER 615 001  
 GER 101 002 #GER 102 002 #GER 102 009 GER 202 001 GER 309 001 #GER 395 001 GER 616 001  
 GER 101 003 GER 102 004 GER 102 010 #GER 202 002 GER 309 002 GER 500 001 #GER 768 001  
 GER 101 004 GER 102 005 GER 102N091 GER 202 003 GER 313 001 GER 531 001 #GER 769 001  
 GER 101 005 GER 102 006 GER 201 001 GER 202N091

HISTORY

HIS 104N091 HIS 108 005 #HIS 108N091 #HIS 109 030 HIS 240 001 HIS 523 001 #HIS 589 001  
 HIS 105 001 #HIS 108 007 #HIS 109 015 #HIS 109 031 HIS 240N091 HIS 526 001 HIS 593 001  
 HIS 105 002 #HIS 108 008 #HIS 109 016 #HIS 109 032 HIS 261 001 HIS 535 001 HIS 594A001  
 HIS 105 003 #HIS 108 009 #HIS 109 017 #HIS 109 045 #HIS 271 001 #HIS 543 001 HIS 596 001  
 #HIS 105 004 #HIS 108 011 #HIS 109 019 #HIS 109 046 #HIS 286 001 HIS 546 001 HIS 621 001  
 HIS 105 005 #HIS 108 012 #HIS 109 020 #HIS 109 047 #HIS 296 001 HIS 549 001 #HIS 632 001  
 HIS 105 006 #HIS 108 013 #HIS 109 021 #HIS 109 048 #HIS 311 001 HIS 551 001 HIS 633 001  
 HIS 105 008 #HIS 108 014 #HIS 109 022 #HIS 109 053 #HIS 316 002 HIS 557 001 HIS 638 001  
 #HIS 105 009 #HIS 108 015 #HIS 109 023 #HIS 109 054 #HIS 351 001 HIS 562 001 HIS 695 001  
 #HIS 105 011 #HIS 108 016 #HIS 109 024 #HIS 109 055 #HIS 353 001 HIS 565 001 HIS 710 001  
 #HIS 105N099 #HIS 108 017 #HIS 109 026 #HIS 109N099 #HIS 395 001 #HIS 566 001 HIS 722 001  
 HIS 105N091 #HIS 108 018 #HIS 109 027 #HIS 109N091 HIS 397 001 HIS 579 001 HIS 730 001  
 #HIS 108 001 #HIS 108 019 #HIS 109 028 #HIS 203 001 #HIS 513 001 HIS 584 001 HIS 768 001  
 #HIS 108 003 #HIS 108 020 #HIS 109 029 #HIS 230 001 HIS 520 001 HIS 586 001 HIS 769 001  
 HIS 108 004 #HIS 108I092

\*31577 HIS 566 001 RECENT HISTORY U S SINCE 1939 3 MWF 1000-1050AM CP 320 DYE

LATIN AMERICAN STUDIES

LAS 395 001 LAS 401 001

For other courses being offered as part of the program of Latin American Studies, see appropriate departmental listings.

LINGUISTICS

#LIN 395 001 #LIN 516 001 #LIN 519 001

For other courses being offered as part of the program in Linguistics, see appropriate departmental listings.

MATHEMATICS

MA 108N095 #MA 113 012 #MA 122 009 #MA 123N092 MA 261 001 #MA 432G001 MA 639 001  
 MA 108N096 #MA 113 016 MA 122 011 #MA 132 002 #MA 320 001 MA 433G001 MA 651 001  
 MA 108N102 #MA 113 021 MA 122 012 MA 201 001 #MA 321 003 MA 472G001 MA 661 001  
 MA 108N103 MA 113A014 MA 122 014 MA 201 004 MA 322 002 MA 483G001 MA 670 001  
 MA 108N105 MA 113A015 MA 122 015 #MA 202 001 MA 351 001 #MA 525 001 MA 672 001  
 #MA 108N091 MA 113N091 MA 122 016 #MA 202 004 #MA 362 001 MA 566 001 MA 721 001  
 MA 112N093 #MA 114A015 MA 122 017 #MA 214 006 #MA 396H099 MA 602 001 #MA 732 001  
 #MA 113 001 #MA 114A016 MA 122 020 #MA 214 007 MA 399 001 MA 611 001 MA 752 001  
 #MA 113 002 #MA 114H099 MA 122 021 #MA 214 012 #MA 410G001 MA 615 001 MA 765 001  
 MA 113 003 MA 122 001 #MA 422N091 #MA 240 001 #MA 411G001 MA 620 001 #MA 768 001  
 #MA 113 010 MA 122 002 #MA 123 017 #MA 240 002 #MA 416G001 MA 622 001 #MA 769 001  
 #MA 113 011 MA 122 003 #MA 123 025 #MA 240 003 MA 417G001 MA 632 001 MA 778 001

\*91405 MA 113 018 CALCULUS I 4 MTRF 0900-0950AM CP 201 STAFF  
 \*91359 MA 113 021 CALCULUS I 4 MTRF 0200-0250PM CP 208 STAFF  
 \*91545 MA 123N092 ELE CALC & ITS APPLIES 3 TR 0600-0715PM CB 231 STAFF  
 \*35441 MA 202 001 MATH FOR ELEM TEACHERS II 3 MWF 0900-0950AM CB 335 STAFF  
 \*91375 MA 240 003 INTRO DISCRETE COMPUTER MATH 3 TR 1230-0145PM CB 345 STAFF  
 \*91389 MA 321 003 INTRO TO NUMERICAL METHODS 3 MWF 0200-0250PM CB 343 STAFF  
 \*90950 MA 732 001 SEL TOP DIFF & INTEGRAL EQUATNS 3 TR 0930-1045AM AH 265 HAYDEN

MIDDLE EAST CIVILIZATION

For courses being offered as part of the program in Middle East Civilization, see appropriate departmental listings.

MILITARY SCIENCE

MS 102 001 MS 102 004 MS 202 001 MS 221 001 MS 221 003 MS 302 002 MS 342 001  
 MS 102 002 MS 102 005 MS 202 002 MS 221 002 MS 372 001 MS 311 001 MS 342 002  
 MS 102 003 MS 102 006 MS 202 003

PHILOSOPHY

#PHI 100 005 PHI 100N091 #PHI 120 012 #PHI 130 010 #PHI 320 002 PHI 513 001 PHI 630 001  
 #PHI 100 006 #PHI 120 001 #PHI 120N091 PHI 130N091 PHI 350 001 PHI 516 001 #PHI 680 001  
 #PHI 100 007 #PHI 120 002 #PHI 130 001 PHI 130N091 PHI 395 001 PHI 520 001 PHI 710 001  
 #PHI 100 008 #PHI 120 003 #PHI 130 004 #PHI 270 001 #PHI 399 001 PHI 550 001 PHI 768 001  
 #PHI 100 011 #PHI 120 004 #PHI 130 008 #PHI 300A001 PHI 503 001 PHI 562 001 PHI 790 001  
 #PHI 100 012 #PHI 120 008 #PHI 130 009 PHI 300B002

\*42145 PHI 120N091 INTRODUCTORY LOGIC 3 TR 0730-0845PM CB 346 SLICER  
 \*91448 PHI 130 008 INTRODUCTORY ETHICS 3 TR 0330-0445PM CB 205 BRUZINA  
 \*91456 PHI 130 009 INTRODUCTORY ETHICS 3 TR 0200-0315PM CB 337 MILLER  
 \*91464 PHI 130 010 INTRODUCTORY ETHICS 3 TR 0330-0445PM CB 203 FLETCHER  
 \*91430 PHI 320 002 SYMBOLIC LOGIC I 3 MWF 1200-1250PM CB 212 CHANDLER

PHYSICS AND ASTRONOMY

PHY 105 001 #PHY 203 005 #PHY 217 003 #PHY 241 001 PHY 514 001 PHY 548 001 PHY 715 001  
 PHY 130 001 #PHY 203N091 PHY 231A009 #PHY 241 004 PHY 520 001 PHY 549 001 PHY 768 001  
 PHY 151 001 #PHY 203N092 PHY 231B099 #PHY 242 003 PHY 524 001 PHY 555 001 #PHY 769 001  
 PHY 152 001 #PHY 207 001 #PHY 232 004 #PHY 361 001 #PHY 530 001 PHY 600 001 PHY 770 001  
 #PHY 201 001 #PHY 207 002 #PHY 232 006 PHY 395 001 #PHY 535 001 PHY 604 001 PHY 781 001  
 #PHY 201 002 #PHY 207 003 #PHY 232A010 #PHY 404G001 #PHY 538 001 PHY 611 001 PHY 790 001  
 #PHY 203 002 #PHY 211 003 #PHY 232H099 PHY 417G001 PHY 545 001 PHY 632 001 PHY 791 001  
 #PHY 203 004 PHY 213N092

Astronomy

AST 191 001 AST 191 002 AST 192 001 AST 192 002 AST 192N091 AST 395 001 AST 495G001

POLITICAL SCIENCE

PS 101 001 PS 101N091 PS 201 007 PS 395 001 PS 470G001 PS 545 001 PS 711C003  
 PS 101 003 PS 101N092 PS 201N091 PS 399 001 PS 473G001 PS 553 001 PS 752 001

\*Added course  
 \*Changed course  
 #Five or less vacancies

College of Arts and Sciences - Continued

**Quality**

- jackets
- jerseys
- warmups
- custom lettering
- athletic shoes
- team equipment
- shorts
- socks
- hats

at a lot less than you'd expect.

**THE LOCKER ROOM**  
 sporting goods

NEW LOCATIONS  
 304 S. Lime 262 8212  
 739 Lane Allen Rd.  
 276-1101

**Anthony's**  
 FOOD MART & DELI  
 presents  
 what has previously been unknown to the U.K. population...VARIETY!

**Hot & Cold Deli Sandwiches**  
**Homemade Soups & Chili**  
**Large and Small Hoagies**  
 with your choice of meats & cheeses  
**Rye or White Bread**  
**Chili Dogs**

For breakfast we offer  
**Coffee & Donuts**  
**Sausage & Biscuits**

A large selection of desserts

**SHAKLEE HEALTH PRODUCTS**

567 S. Limestone  
 Across from Commerce Building

**NOW OPEN**

**White Castle**

**WE'RE PROUD TO NOW BE ABLE TO SERVE YOU IN LEXINGTON!**

24 hours a day, 7 days a week  
 New Circle and Bryan Station Rds.

*Without White Castle, All Hamburgers would taste the same.*

**IS THIS YOU IN DROP-ADD?**

If you can't find what you need or all your classes are closed...Come see us.

You can always add one of our 155 classes!

**Independent Study Program**  
 ROOM 1-FRAZEE HALL-257-2966











Graduate School - Continued

\*45934 RC 760 001 CURRENT ISSUES IN REHABILITATION J M 0600-0830PM DH 203 STAFF

TOXICOLOGY

#TX 640 001 TOX 650 001 TOX 768 001 TOX 769 001 TOX 770 001 TOX 780 001 TOX 790 001

COLLEGE OF HOME ECONOMICS

HE 300A001

FAMILY STUDIES

FAM 101 001 FAM 254 001 FAM 353 001 FAM 550 001 FAM 563 001 FAM 596C003 FAM 684 001
FAM 250 001 FAM 254 002 FAM 411 001 FAM 551 001 FAM 586 001 #FAM 624 001 FAM 768 001
FAM 251 001 FAM 254N091 FAM 464 001 FAM 553 001 #FAM 595 001 #FAM 653 001 FAM 775 001
FAM 251N091 FAM 254N092 FAM 503 001 FAM 554 001 #FAM 596A001 FAM 655 001 FAM 785 001
FAM 252 001 FAM 255 001 #FAM 509 001 FAM 562 001 FAM 596B002 FAM 668 001 FAM 786 001
FAM 253 001 FAM 350 001

HUMAN ENVIRONMENT: DESIGN AND TEXTILES

Design

#HED 101 003 HED 104 003 #HED 204 002 HED 306 002 HED 528 001 HED 768 001 \*HED 783 001
HED 102 001 HED 104 004 #HED 204 003 HED 402G001 HED 593 001 HED 772 001 \*HED 783A002
HED 102 002 HED 204 001 \*HED 206 001

\*30058 HED 206 001 EN PRO I 3 MW 0300-0415PM FB 124 WHITESIDE

\*90603 HED 783 001 SP PROBS INT DESIGN:ADV RESTOR AND PRESERVATION 3 TBA FB 107 SNADON

\*90611 HED 783A002 SP PROBS INTERIOR DESIGN 1-3 HOURS ARR STAFF

Textiles

HET 101 001 #HET 230 001 HET 320 001 #HET 414 001 #HET 537 001 #HET 597A001 HET 782 001
#HET 130 001 HET 230A003 #HET 335 001 HET 414 002 HET 592 002 HET 768 001 HET 787 001
#HET 221 003 #HET 310 002 HET 412 001 HET 533 001 HET 597 002

NUTRITION AND FOOD SCIENCE

NFS 101 001 #NFS 206 001 NFS 342 001 NFS 516 001 NFS 591B002 NFS 768 001 NFS 784 001
NFS 101N091 NFS 212 001 NFS 508 001 #NFS 546 001 NFS 594 001 NFS 771 001 #NFS 803 001
NFS 204 001 #NFS 312 001 NFS 510 001 NFS 590 001 NFS 660 001 #NFS 781 001 #NFS 806 001
#NFS 204 002 NFS 340 001 NFS 514 001

\*39942 NFS 312 001 APPLIED NUTRITION LAB 4 MW 0230-0345PM FB 211 CONCON
T 0130-0320PM EH 102

UNIVERSITY HONORS PROGRAM

#HON 102 002 HON 102 006 HON 102 010 HON 202 004 HON 202 008 #HON 300B002 HON 398 001
#HON 102 004 #HON 102 007 #HON 202 002 HON 202 005 HON 202 009 HON 395 001 HON 399 001
#HON 102 005 HON 102 009 #HON 202 003 HON 202 007 #HON 300A001

\*31879 HON 202 002 SOPHOMORE COLLOQUIUM 3 MWF 0900-0950AM FA 209 JONES
\*31887 HON 202 003 SOPHOMORE COLLOQUIUM 3 MWF 1000-1050AM FA 209 JONES

For other courses being offered as part of the Honors Program, see appropriate departmental listings.

COLLEGE OF LIBRARY SCIENCE

LS 510N091 LS 608N091 LS 622 001 LS 645 001 LS 650N091 LS 660 001 LS 690B002
LS 575 001 LS 609 001 LS 623 001 LS 646 001 LS 655 001 LS 665 001 #LS 695 001
LS 576 001 LS 618 001 LS 635 001 LS 647N091 #LS 656 001 LS 690A001 #LS 768 001
LS 603 001 LS 620 001 LS 640 001

\*Added course
\*Changed course
#Five or less vacancies

Continued

Vertical advertisement for 'FRED FRED' with repeating text and a cartoon illustration of a basketball player.

The Kentucky Kernel 210 Journalism Building, University of Kentucky, Lexington, Ky. 40506, is published each class day during the spring and fall semesters and weekly during the summer session.
Third class postage paid at Lexington, Kentucky 40511. Subscription rates are mailed \$20/year, \$10/90 semester, \$5/00 for summer or one cent per year non-mailed.

Bluegrass Coin Shop advertisement featuring a coin and text: 'Paying Cash for Used Class Rings High School or College. 10 KT gold mens \$40 & up 10 KT gold womens \$20 & up. Good with this coupon. 444 S. Ashland Ave. (in Chevy Chase) 269-6213 269-1012'

TROPICAN Aerobic Dance and Slimnastics Classes Monday Thru Thursday \$3500 6 Week Program \$4500 includes Tanning and Aerobics \$5500 Co-ed (for 2 persons). REGISTER NOW. KEEP A BEAUTIFUL TAN 10% OFF TANNING WITH STUDENT I.D. For information call 266-9104 or 266-4661

PROCESSING SPECIAL 20% DISCOUNT with this coupon. STONE PHOTOGRAPHY INC. 563 South Limestone

TACO TICO Valid at all Kentucky locations. STRETCH YOUR PESOS WITH TACO TICO COUPONS. 3 TACOS \$1.00. Save 30c with coupon. Offer expires Jan. 20, 1981. Limit four. Taco Burger 59c. Save 20c with coupon. Offer expires Jan. 20, 1981. Limit four. Burrito 79c. Save 20c with coupon. Offer expires Jan. 20, 1981. Limit four. Enchilada 69c. Save 20c with coupon. Offer expires Jan. 20, 1981. Limit four.

Cross Country SKI touring equipment Sale or Rent Complete packages start at about \$100 233-1764. Everybody's Bike Shop 212 Woodland Ave.

MINT STATE 70 Invites All Students down for cocktails & a good time Euclid Ave. 266-9471

the TIME CAPSULE ARCADE 6 tokens for \$1.00 with coupon Limit 1 per person 1466 Village Drive Across from Taco Tico Expires 12/19/80 Limit 1 per visit

Farmhouse Fraternity Spring Rush invites you to our January 12-20. Mon. 12 Jim Taylor Disco with the Delta Gamma's 8:00 p.m. Tue. 13 Casino Night 8:00 p.m. Wed. 14 Victory Party (with pizza) after game Thur. 15 Live Band (Caribou) 8:00 p.m. Fri. 16 Pier 99 (meet at house by 7:15) Mon. 19 Slides and Ballgame Night 8:00 p.m. Tue. 20 Dinner at Columbia Steak House Ph. 257-3341 Corner of Hilltop Ave. and University Dr.

ANGIE'S FAST FREE DELIVERY SIZZLING HOT Now Delivering: Mon-Fri: 9 PM - 12:30 AM Sat: 11 AM - 12:30 AM Sun: 12 NOON - 11:30 PM Lexington - 269-3366 - Euclid & Ashland in Chevy Chase Richmond - 624-2424 - 263 East Main Street

Richard I. Fleischer announces he is available to practice: Immigration and Nationality Law 202 Eagle Savings Bldg. 914 Main Street Cincinnati, Ohio 45202 513-621-1181

Beards Art Handmade Soap Civic Center Mall 254-4372 Patchen Village Shopping Center 266-8612 Zandale Shopping Center 278-1401 Welcome back U.K. Students to spring semester Please call about our upcoming classes in needlepoint, knitting, embroidery, and counted cross-stitch

kinko's 345 South Limestone 253-1360 253-1360 open evenings Mon.-Thurs. Includes cartoon of a man with a large beard and a sign: 'Look, I'm your average member of the faculty, and though as I am on my student's I believe in fairness. My course use Kinko's Professor's Publishing Program. It uses my student's time and money while giving me complete freedom in material selection. Call or drop by Kinko's for more information on the Professor's Publishing Program.'

FINE MEXICAN AMERICAN FOOD GRINGO'S Serving Lunch Mon.-Sat. 11-4 Dinner Mon.-Sat. 4-11 Lounge Mon.-Sat. 'til 1 a.m. Happy Hour Mon.-Fri. 4 to 6 1915 Nicholasville Road Next to Jerry's/Lexington, KY. Showing movies nightly Monday thru Saturday. Includes cartoon of a man in a sombrero.



COLLEGE OF MEDICINE

ANATOMY

#ANA 503 001 #ANA 532 001 ANA 536 001 ANA 611 001 #ANA 633 001 #ANA 662 001 #ANA 769 001  
 #ANA 516 001 ANA 532 002 ANA 538 001 #ANA 629 001 #ANA 636 001 #ANA 768 001 #ANA 802 001  
 ANA 529 001 #ANA 534 001

BEHAVIORAL SCIENCE

#BSC 331 001 BSC 529 001 BSC 546 001 BSC 772A001 BSC 772B002 #BSC 778 001 BSC 770 001  
 BSC 527 001

BIOCHEMISTRY

#BCH 395 001 BCH 502 001 BCH 504 001 BCH 619 001 BCH 640 001 BCH 769 001

COMMUNITY MEDICINE

CM 601N091 CM 622N091 CM 775N091 #CM 785 001 CM 821 001 CM 841 001

MEDICAL MICROBIOLOGY AND IMMUNOLOGY

MMI 515 001 MMI 707 001 MMI 710 001 MMI 811 001 MMI 812 001

PATHOLOGY

+PAT 611 001 PAT 812 001 PAT 821 002

+91235 PAT 611 001 BIOPATHOLOGY 3 MW 0200-0315PM BS 108- ZIMMER/  
 109 STEINER

PHARMACOLOGY

PHA 541 001 #PHA 612 001 PHA 663 001 PHA 750 001 PHA 768 001 #PHA 769 001 PHA 770 001  
 #PHA 603 001 #PHA 658 001

PHYSIOLOGY AND BIOPHYSICS

PGY 206 001 #PGY 511 001 PGY 660 001 PGY 769 001 PGY 774 001 PGY 791 001 PGY 812 001  
 PGY 504 001 #PGY 627 001 PGY 768 001 PGY 772 001

RADIATION MEDICINE

#RM 545 001 RM 548 001 RM 549 001 RM 640 001 #RM 660 001 RM 740 001

COLLEGE OF PHARMACY

PHR 337 001 #PHR 595 001 #PHR 790 001 PHR 828 001 #PHR 856 001 #PHR 878 001 #PHR 884 001  
 PHR 340 001 #PHR 612 001 #PHR 802 001 PHR 830 001 PHR 860 002 PHR 881 001 PHR 884 002  
 PHR 395 001 PHR 760 001 PHR 802 002 \*PHR 835 001 PHR 869 001 PHR 882 001 #PHR 890 001  
 PHR 474 001 PHR 768 001 #PHR 802 003 PHR 838 002 PHR 870 001 PHR 882 002 PHR 892 001  
 PHR 475 001 #PHR 769 001 PHR 827 001 #PHR 847 001 #PHR 872 002 #PHR 883 001 PHR 895 001  
 PHR 476 001 PHR 778 001 PHR 827 002 #PHR 852 001 #PHR 875 001 #PHR 883 002 PHR 896 001  
 #PHR 545 001 PHR 780 001 PHR 827 003 #PHR 854 001

+91758 PHR 545 001 STERILE PARENTERALS & DEVICES 3 TBA DeLUCA

\*42668 PHR 835 001 PHARMACEUTICAL LAW LECTURE 2 R 1100-1150AM CN 511 COBB  
 TBA TBA

COLLEGE OF SOCIAL WORK

SW 001 001 SW 395 001 SW 444E005 SW 580 001 SW 630 001 SW 690 001 #SW 740D004  
 SW 124 001 SW 401G001 SW 444F006 SW 601 001 SW 630N091 #SW 701 001 SW 740E005  
 #SW 124 002 SW 411G001 #SW 445A001 SW 601N091 #SW 640B002 #SW 703 001 SW 740F006  
 SW 124N091 SW 416 001 #SW 445B002 SW 604 001 SW 640C004 #SW 711 001 SW 740I007  
 SW 222 001 #SW 420S001 SW 445J004 #SW 609 001 SW 640F006 SW 721 001 #SW 745 001  
 SW 222 002 #SW 427 002 SW 445F006 SW 610N091 SW 640I007 SW 731 001 SW 750 001  
 SW 225 001 #SW 444A001 SW 510N091 SW 620 001 #SW 650 003 SW 740A001 #SW 770 001  
 SW 225 002 SW 444C003 SW 561N091 SW 621 001 #SW 680A002 SW 740B002 #SW 770 002  
 SW 322 001 SW 444D004 SW 571 001 #SW 624 001 SW 680N091 SW 740C003 #SW 790 001  
 SW 354 001

COLLEGE OF NURSING

NUR 400G001 NUR 625 001 NUR 781 001 #NUR 852 009 NUR 856 001 #NUR 858 006 #NUR 868 004  
 NUR 543 001 NUR 626 001 NUR 851 001 NUR 852 010 NUR 865 002 NUR 858 007 NUR 868 005  
 NUR 550 001 #NUR 627 001 NUR 851 002 NUR 852 011 NUR 856 003 NUR 858 008 #NUR 868 006  
 #NUR 615A001 #NUR 660 001 NUR 851 003 #NUR 852 012 #NUR 856 004 NUR 858 009 #NUR 872 001  
 #NUR 615B002 #NUR 768 001 #NUR 851 004 NUR 853 001 NUR 856 005 #NUR 864 001 NUR 874 001  
 #NUR 615C003 #NUR 771A001 #NUR 851 005 #NUR 854 002 #NUR 856 006 NUR 864 002 NUR 876 002  
 #NUR 615D004 #NUR 771B002 NUR 851 006 NUR 854 003 NUR 856 007 NUR 864 003 NUR 876A001  
 #NUR 615E005 #NUR 771C003 #NUR 852 003 NUR 854 004 #NUR 856 008 NUR 864 004 #NUR 880 001  
 #NUR 616 001 #NUR 771D004 #NUR 852 004 NUR 854 005 #NUR 858 001 NUR 866 001 NUR 880 002  
 #NUR 620 001 #NUR 771E005 #NUR 852 006 NUR 854 006 #NUR 858 002 #NUR 868 001 #NUR 880 003  
 #NUR 622 001 #NUR 771F006 #NUR 852 007 NUR 854 007 #NUR 858 003 #NUR 868 002 #NUR 895 001  
 NUR 623 001 #NUR 774 001 NUR 852 008 NUR 854 008 NUR 858 004 #NUR 868 003 #NUR 899 001  
 NUR 624 001

+91511 SW 650 003 RESEARCH PRACTICUM 2 F 0100-0250PM OT 108 McCULLAGH

+91103 SW 680A002 SP PRS SW PRAC:GRANTSMANSHIP 3 W 0600-0845PM KH 105 LEACH

\*Added course  
 \*Changed course  
 #Five or less vacancies



# do it on target

REGISTER FOR ARMY ROTC SO YOU CAN DO IT:  
 IN THE WOODS—Camping at Avon, Ky.  
 ON A ROPE—Mountaineering and Rappelling  
 ON THE FLOOR—Men & Women's Drill Team  
 ON THE RIVER—Rubber Rafting, Canoeing  
 ON TARGET—Basic Marksmanship  
 ON THE MOVE—Karate

REGISTER NOW FOR:  
 FRESHMEN MS 102 2 CREDIT HOURS  
 SOPHOMORES MS 221/202 2 CREDIT HOURS  
 THERE ARE NO OBLIGATIONS OR PREREQUISITES!



## SPECIAL ADMISSION

Public Skating & Private Parties  
 this coupon worth \$1<sup>00</sup> towards any public sessions

under new ownership also have  
 video games and other amusement machines  
 Eastland Superstore  
 1105 Winchester Rd.  
 255-2034  
 offer good til' Feb. 28, 1981

Where Fellowship and Liturgy Matter!

## CANTERBURY FELLOWSHIP


472 Rose Street 254-3726  
 Holy Eucharist  
 Sunday 10:30 a.m. Wednesday 5:30 p.m.  
 5:30 p.m. with healing service

COME AND ENJOY!

## STUDENTS!

YOU NEED A GOOD INSURANCE POLICY TO HELP MEET THE COSTS OF HOSPITALIZATION, ACCIDENT CARE, AND SURGERY!!!!

THIS WEEK IS THE TIME TO ENROLL IN THE U.K. STUDENT BLUE CROSS AND BLUE SHIELD PLAN.  
 IT'S A GOOD POLICY AT A GOOD PRICE!



Don't miss the boat

NEW ENROLLERS  
 BLUE CROSS AND BLUE SHIELD REPRESENTATIVES WILL BE AT THE STUDENT CENTER (foot of the ballroom stairs) FROM 9 AM TO 3 PM, MONDAY THROUGH FRIDAY, THE WEEK OF JANUARY 12th. THEY CAN ANSWER YOUR QUESTIONS, ACCEPT YOUR APPLICATION AND PAYMENT (check only), OR PROVIDE YOU WITH BROCHURES AND APPLICATIONS SO THAT YOU CAN MAIL YOUR PAYMENT IN LATER. IT ONLY TAKES ABOUT 10 MINUTES TO ENROLL! IF YOU PICK UP MATERIALS TO MAIL IN LATER, YOUR APPLICATION AND PAYMENT MUST BE POSTMARKED BY FEBRUARY 12, 1981.

CURRENT SUBSCRIBERS  
 IF YOU HAVE NOT RECEIVED YOUR PREMIUM DUE STATEMENT (BILLING) FOR THE SPRING 1981 SEMESTER, CONTACT THE LEXINGTON BLUE CROSS/BLUE SHIELD OFFICE (255-2437), IT IS YOUR RESPONSIBILITY TO FOLLOW UP ON THIS! YOUR CONTINUING PAYMENT MUST BE POSTMARKED BY MARCH 26, 1981

PLEASE NOTE: THE ENROLLMENT AND CONTINUING PAYMENT DEADLINES ARE STRICTLY ENFORCED. ALSO, THE HEALTH SERVICE DOES NOT TAKE PAYMENTS FOR THIS PLAN.



## STUDENT SEMESTER SPECIAL!

\*\$85.00 for:

- Karate, Nautilus, Trimmastics or Aerobic Dance

\*price includes unlimited use of spa facilities

RACQUETBALL MEMBERSHIPS AVAILABLE

- \$15 for individual/per semester
- \$25 for family/per semester

All Semester Memberships Expire May 15  
 OPEN 7 DAYS A WEEK 6 a.m.-12 p.m.

### Wildcat's Remaining Home Games

- Jan. 14 vs. Mississippi
- Jan 21 vs. Florida
- Jan 28 vs. Miss. State
- Feb. 4 vs. Auburn
- Feb. 14 vs. Alabama
- Feb 21 vs. Vanderbilt
- Mar. 1 vs. L.S.U.

G O O O O O O O O O O  
C A T S ! ! ! ! !



### Con artists.

**They'll tell you the trip is free and then take you for a ride!**



Funny thing about con artists. Every year, millions of people are talked out of their life savings. There are lots of ways to be conned. I think you should learn about them - so you won't be. Write to: Crime Prevention Coalition, Box 6600, Rockville, Maryland 20850. Help put these crooks out of business, and you'll be helping to...

**TAKE A BITE OUT OF CRIME**

A message from the Crime Prevention Coalition. This publication and The Ad Council.

### The Kentucky Kernel



Independent Since 1972



## LICK INFLATION!

For the price of a postage stamp, you can get a FREE copy of this booklet about the causes of inflation, and what you can do to help stop it. Write now!

Mail this coupon to:  
"Dollars and Sense"  
Pueblo, Colorado 81009

Name \_\_\_\_\_  
Address \_\_\_\_\_  
City \_\_\_\_\_  
State \_\_\_\_\_ Zip \_\_\_\_\_

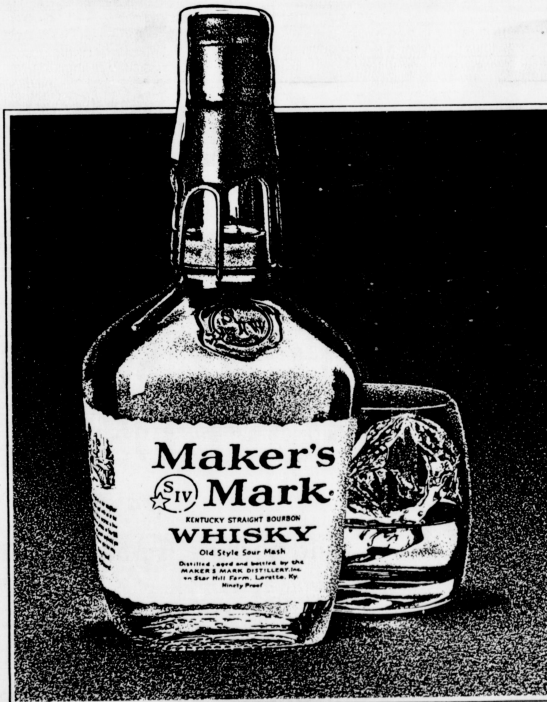


**We can all beat inflation if we just use our dollars and sense.**

A public service message of The Advertising Council and The U.S. Departments of Agriculture, Commerce, Labor and Treasury Presented by this newspaper.



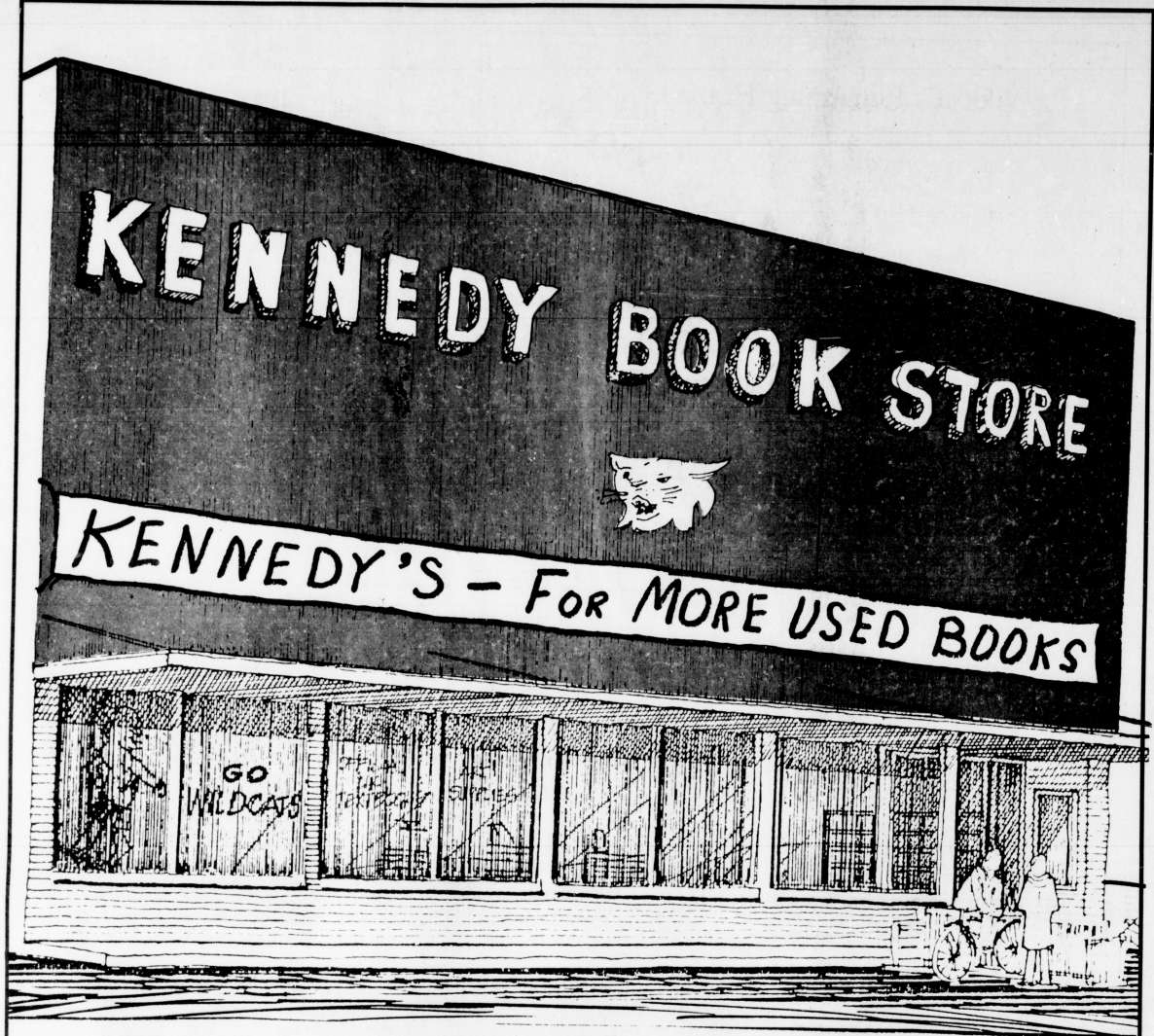
# Make your mark.



Think of it as the uncompromised whisky. Made with an absolute concern for quality. And an absolute disregard for the concerns of time and cost. Serve your friends Maker's Mark and you've told them that you know they appreciate the very best. And that you think they're worth it. Taste Maker's Mark - or the extraordinary 101 proof Maker's Mark Limited Edition. These whiskies culminate four generations of Samuels family experience in the art of making Kentucky whisky.

## It tastes expensive...and is.™

Maker's Mark Distillery, Loretto, Ky. Ninety Proof. Fully Matured.



Why do more people prefer

## KENNEDY BOOK STORE?

### BECAUSE WE HAVE MORE USED BOOKS

(save 25%)

and because we have:

- |      |   |
|------|---|
| MORE | space (largest store at U.K.)           |
| MORE | experience (31 years at U.K.)           |
| MORE | art and architecture supplies           |
| MORE | paperback books (for pleasure or study) |
| MORE | school supplies                         |
| MORE | U.K. shirts and U.K. souvenirs          |

More of what you want when you want it  
AND WE PAY TOP CASH FOR YOUR BOOKS!