

OFFICIAL PROGRAM

TWENTY-FIVE CENTS



KENTUCKY

University Archives
Margaret L. King Library - North
University of Kentucky
Lexington, Kentucky 40506



XAVIER

NOVEMBER 16 • 1957 • STOLL FIELD

B. E. Burroughs

We're Rootin' for you Kentucky Wildcats!

Begley's

**The Begley Drug Company
Three Stores In Lexington:**

- 1198 NORTH LIMESTONE
- 878 EAST HIGH STREET
- 404 SOUTHLAND DRIVE

**SERVING
THE BEST IN DRUG STORE NEEDS**

**We Also Serve Central and Eastern Kentucky
With Stores In:**

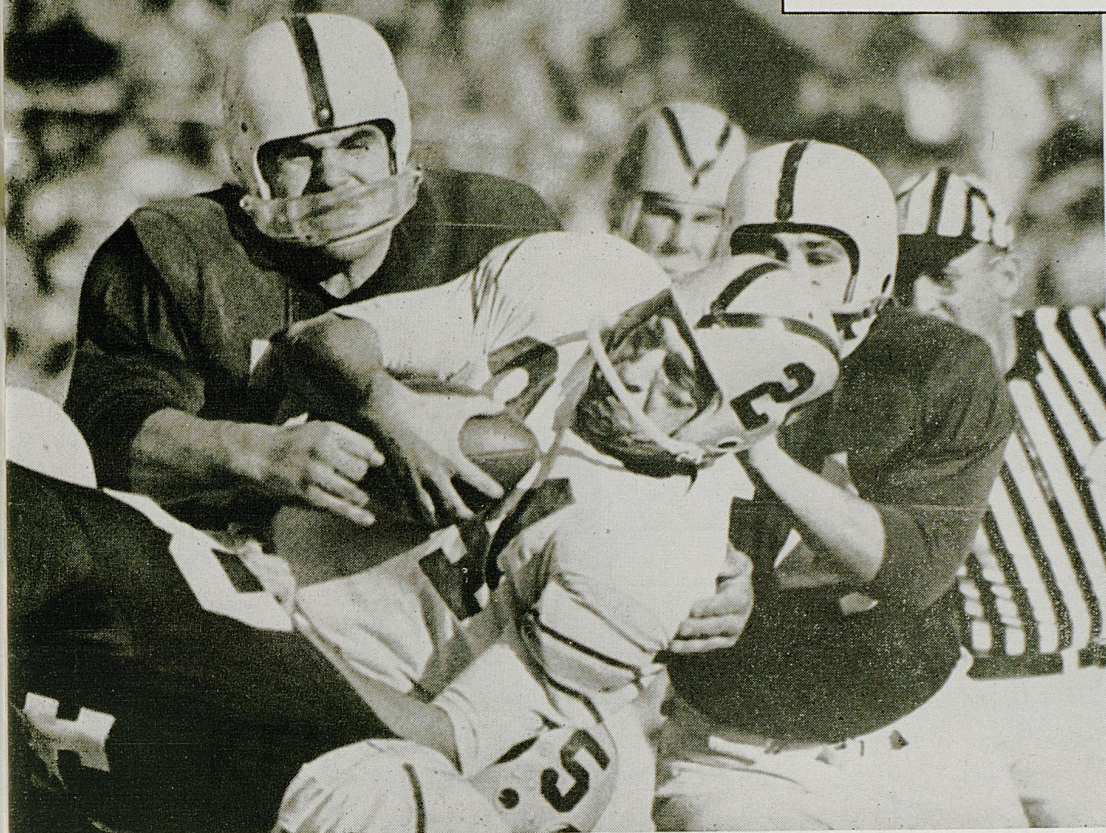
LONDON
RICHMOND
SOMERSET
MT. STERLING
DANVILLE
SHELBYVILLE

CORBIN
STANFORD
IRVINE
McKEE
CYNTHIANA
WINCHESTER

Reliable Drug Service Since 1921
"You're Always Welcome At Begley's"

OFFICIAL KENTUCKY FOOTBALL PROGRAM

Edited by Ken Kuhn, Sports Publicity Director
Published by University of Kentucky Athletics Association
Represented for National Advertising by
Spencer Advertising Co., New York



KENTUCKY
"WILDCATS"

VERSUS

XAVIER
"MUSKETEERS"

November 16, 1957 STOLL FIELD

Kentucky and its neighbor to the north of the Mason-Dixon line have met on the gridiron 13 times with the initial contest taking place in 1935 at Cincinnati and the last at Lexington a year ago. The meeting last season resumed the rivalry which had been interrupted after the 1949 renewal.

The Muskies' lone triumph in their series with the Wildcats came in 1938 as they posted a 26-7 success at Cincinnati. Kentucky has taken all the others, generally by decisive scores. A 70-0 shellacking administered by UK in '46 stands as one of the biggest point-production efforts ever seen on Stoll Field. The record high is an 83-0 debacle involving hapless North Dakota in a 1950 meeting with one of UK's greatest teams.

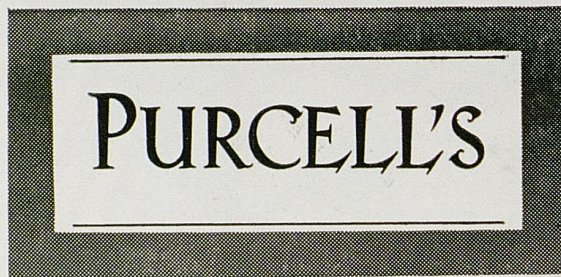
Making only its third journey to Lexington last year in the 13 years of grid relations with UK, Xavier found their

hosts a "rude" bunch and went home sadder but wiser on the short end of a 33-0 defeat. The Muskies were riding a three-game winning streak going into the game and doing all right in their class.

But the Bluegrass eleven had too many horses for the scrappy Muskies to cope with as 35 men saw action and even the reserves found it hard to hold back. Oddly enough, Xavier actually outgained Kentucky in net total offense, 347 to 341.

Colorful and successful Mick Connolly, who has piloted the Muskies into the winner's circle 73 percent of the time in the past two seasons, should be able to field another good ball club this season with a little luck. He has a hard core six starters and nine other lettermen reserves to build around and reportedly will have fine overall speed plus depth in the line.

The TREND
is to



320-330 West Main Street, Lexington, Kentucky

•Your Shopping Headquarters
for the Home and the Family!
Everything Under One Roof
at Purcell's... Since 1887
Lexington's Only Complete
Department Store



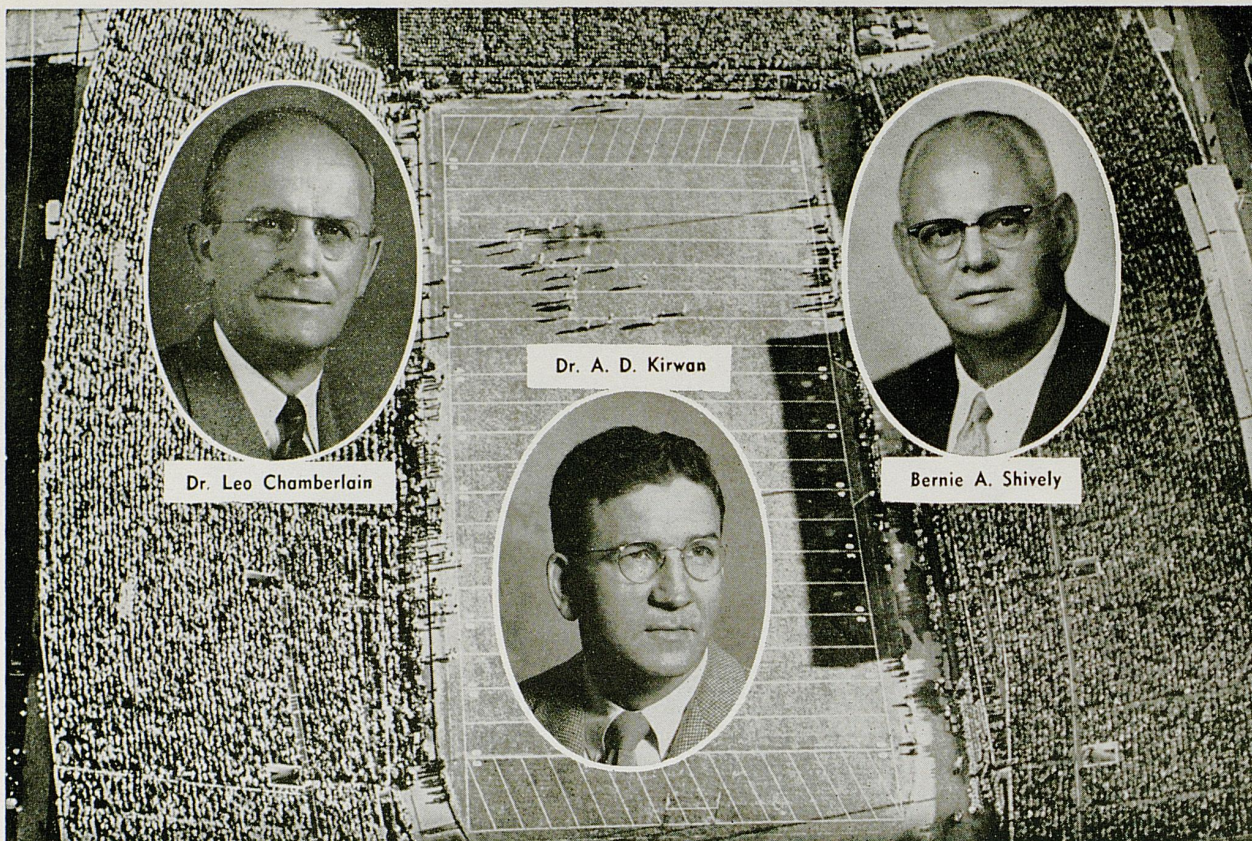


1957 CO-CAPTAINS of the Wildcats, quarterback Kenny Robertson (left) and guard Bob Collier, pose with grid chief Blanton Collier.

1957 FOOTBALL SCHEDULE AND RESULTS

Date	Opponent	Place	UK	Opp.
Sept. 21	*Georgia Tech	Atlanta	0	13
Sept. 28	*Mississippi	Lexington	0	15
Oct. 5	*Florida	Lexington	7	14
Oct. 12	*Auburn	Auburn	0	6
Oct. 19	*Louisiana State	Baton Rouge	0	21
Oct. 26	*Georgia	Lexington	14	33
Nov. 2	Memphis State	Lexington	53	7
Nov. 9	*Vanderbilt	Nashville	7	12
Nov. 16	Xavier	Lexington		
Nov. 23	*Tennessee# (Homecoming)	Lexington		

* SEC Game. Home games start at 2 p.m. CDT, 1 p.m. CST, and 8 p.m. CDT, 7 p.m. CST
 # Tennessee—1:30 p.m. CDT, 12:30 p.m. CST



Dr. Leo Chamberlain

Dr. A. D. Kirwan

Bernie A. Shively

Athletics at Kentucky

Kentucky's athletics program is organized under the Department of Athletics and a corporation known as the University of Kentucky Athletics Association.

A firm believer in sports and sportsmanship, Dr. Leo M. Chamberlain, Vice-President of the University, has general supervision over the Department and also serves as vice chairman of the Board of Directors of the Association.

Former UK football player and one-time Wildcat coach, Dr. A. D. Kirwan, acts as secretary to the Association. He also is the school's faculty representative to the Southeastern Conference.

Supervising the steady growth and balanced development of one of the nation's top athletic programs as Director of Athletics is Bernie A. Shively. The former Illinois All-America footballer has guided the development of Kentucky as a nationally-respected power in major sports since 1938 and gained wide prestige through a fair-minded approach to many problems. Under his direction, the seating capacity of McLean Stadium has been doubled, powerful lighting equipment installed to

bring night football into new popularity, mammoth Memorial Coliseum constructed, new practice facilities and two modern living units (Wildcat Manor and Kitten Lodge) provided for the grid-iron teams.

Maintaining over-all control of U.K. athletics affairs is the Board of Directors of the Athletics Association, composed of the President of the University and 10 other directors appointed by him, including five members of the faculty of the University, the president of the Student Government Association, an alumnus of the school, a member of the U.K. Board of Trustees, and two others. Frank D. Peterson, University Vice President of Business Administration, serves the board as treasurer.

The current Board of Directors consists of:

- | | |
|----------------------------------|--|
| Dr. Frank G. Dickey,
Chairman | Dr. Leo M. Chamberlain,
Vice Chairman |
| Dr. A. D. Kirwan, Secretary | Robert Hobson |
| Dr. Ralph Angelucci | Alfred L. Crabb |
| James B. Allen | Paul Oberst |
| George K. Brady | David Ravencraft (student) |
| Aubrey J. Brown | H. D. Palmore |
| Thomas Clark | D. V. Terrell |
| Lyman Ginger | William A. Tolman |

the honorable
ALBERT B. CHANDLER
Governor of Kentucky



The University of Kentucky today is one of the fastest growing institutions in the world, thanks in great measure to the patronizing far-sightedness of Governor Albert Benjamin Chandler.

Tremendous strides have been taken, under his policy direction and with his constant interest in the future of the state university, and even greater progress is anticipated.

At the request of Governor Chandler (LL.B. '24, LL.D. '37), the 1956 General Assembly granted an appropriation of \$5,000,000 to start a \$25 million Medical Center that promises to be one of the very finest in the country. Another \$6,000,000 has been pledged and is expected to be granted by the 1958 General Assembly, which like the Governor believes

in the long-term gain to be derived by the citizens of Kentucky from this medical school. Construction on the first part of this center, the Medical Sciences building, will begin very soon and is due to be finished by mid-1959.

Education in general has greatly benefited during the Chandler administration. On recommendation of the Governor, the 1956 legislature completely financed the budget requests of U.K. and the five state colleges; and appropriated \$54,785,500 to finance the Foundation Program in full. This program insures at least \$80 a year in state aid for each enrolled pupil, a nine-month school year, higher teachers' pay, more buildings, and better transportation among other benefits.

Laundry

Dry Cleaning

DeBoor

One Day Service Monday thru Friday

No Added Cost

15 Per Cent Discount

and

Curb Service

AT

**265 EUCLID AVE.
PHONE 3-0235**

**880 E. HIGH ST.
PHONE 2-7046**

**1966 HARRODSBURG PIKE
PHONE 5-1488**

MacGregor[®]

MacGregor Co. of Cincinnati, Ohio, supplied U. of K. athletic teams the following equipment:

FOOTBALL — Game Jerseys and Pants; Warmup Jackets; Sideline Capes; Absorblo Shoulder Pads, Knee Pads, and Hip Pads; Colored Leather Belts; Football Stockings.

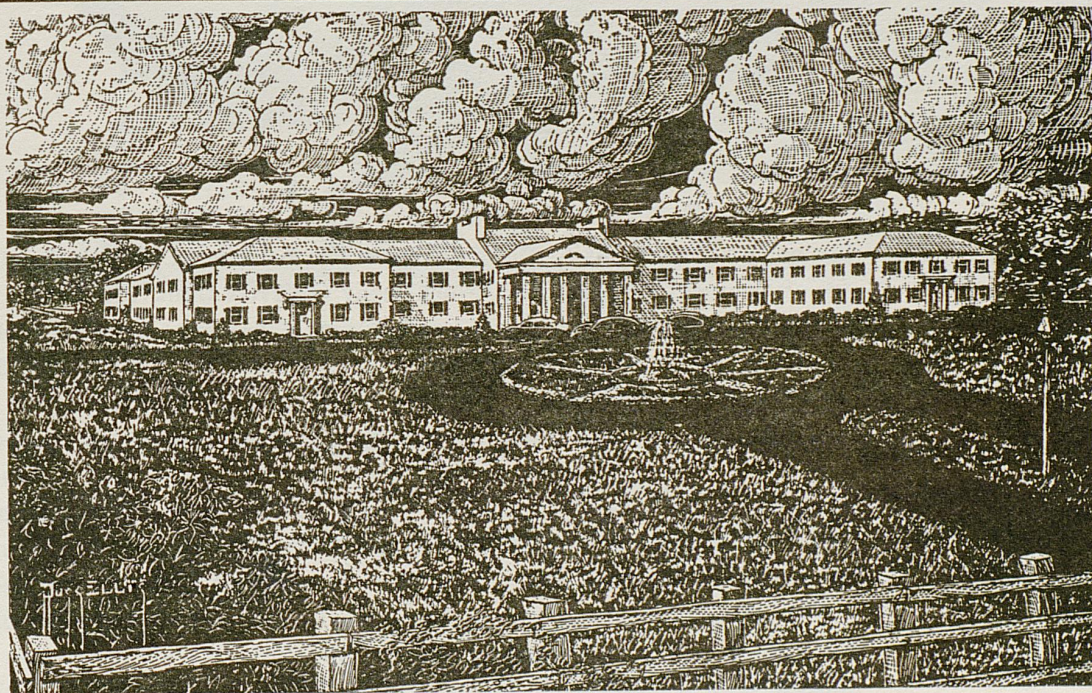
BASEBALL — Uniforms, Shoes, Caps, and #97 Baseballs; Catchers' Mitts, Protection Pads, and Masks; First Basemen's Mitts; Scorebooks.

HUNT'S ATHLETIC GOODS CO., INC.

Phone No. 103

MAYFIELD, KENTUCKY

A MACGREGOR DISTRIBUTOR FOR THIRTY-SIX YEARS



Campbell House Hotel

Free Parking
Air Conditioned

U. S. 68
Swimming Pool

Golf

SCORES OVER STOLL FIELD PUBLIC-ADDRESS SYSTEM COME TO YOU THROUGH THE COURTESY OF THE LEXINGTON NEWSPAPERS

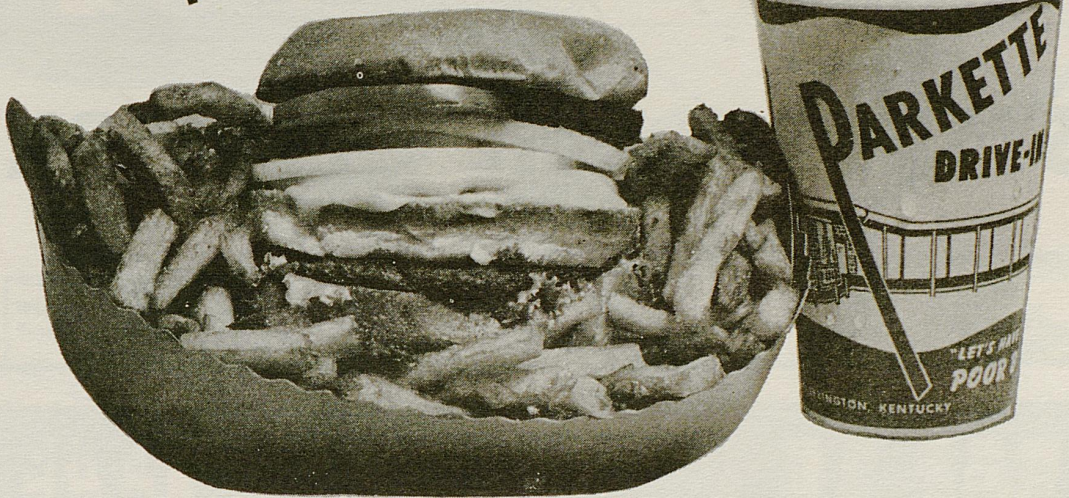


**FRANK
GRAVES
DICKEY**

Just one year ago, Frank G. Dickey accepted the challenge of guiding the University of Kentucky through years which many observers think will find it in its period of maximum physical-plant and student expansion. Enrollment during his "freshman season" in the presidency—8,125, an all-time high for the 92-year-old institution; the anticipated 12,000 to 15,000 students by 1965; and the plans for additional structures single out U.K. as one of the nation's fastest growing institutions. Although young in years, the University's fifth chief executive is recognized as an outstanding educator in the field of higher learning. Born in Wagoner, Oklahoma, Dr. Dickey received most of his education in Lexington. He was graduated from Henry Clay High School, and later was awarded the A.B. degree with highest honors by Transylvania College, and the Master of Arts and Doctor of Education degrees by the University. He also has taken post-doctoral work at Harvard. In 1949, Dr. Dickey was named to head U.K.'s Bureau of School Services and six months later was appointed as Dean of the College of Education—the post he held until his election to the presidency. The president, an avid follower of U.K. teams, strongly favors the continuance of University athletics on their current high plane and in balance with the academic program.

Try
Parkette's
Famous
"Poor Boy"

"Before
And After
The Game
Or Show,
The Parkette's
The Place
To Go"



19 OTHER
DELICIOUS
SANDWICHES !

CHICKEN OR
JUMBO SHRIMP
IN THE BOX !

GIANT
MILK
SHAKES !

Curb Service — Rain or Shine
Parkette Drive In

No. 1—Northeast Beltline . . . On Bypass 25—Phone 4-8723

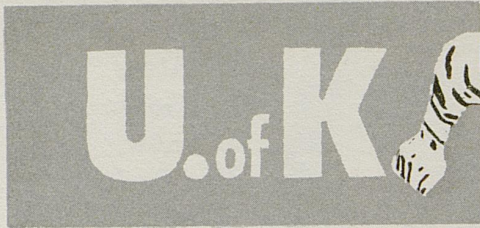
No. 2—Off Beltline Georgetown Rd. U.S. 25—Phone 2-8617

— Also Be Sure to Patronize —

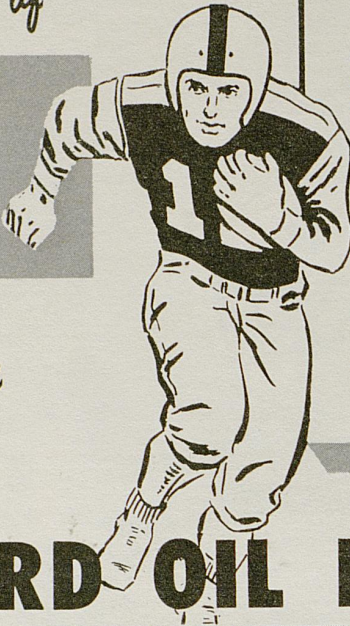
THE COLONEL'S RESTAURANT

- Home-cooked Food
- Main at Midland
- Dining Room Service

All 1957 Games of



with
Claude Sullivan
brought to you
on the



LEXINGTON

- *Mississippi Sept. 28
- *Florida Oct. 5
- *Georgia Oct. 26
- Memphis State Nov. 2
- Xavier Nov. 16
- Tennessee (Homecoming) ... Nov. 23

GAMES AWAY

- Georgia Tech Sept. 21
- Auburn Oct. 12
- *L. S. U. Oct. 19
- Vanderbilt Nov. 9
- *Night Games

STANDARD OIL NETWORK

WKCT
BOWLING GREEN

WCTT
CORBIN

WFKY
FRANKFORT

WVLK
LEXINGTON



WAVE
LOUISVILLE

WPAD
PADUCAH

WVJS
OWENSBORO

WPRT
PRESTONBURG



originating station
All U of K GAMES on



FOOTBALL NETWORK



PLAY-BY-PLAY WITH
Claude Sullivan



6 Years of Progress

1951

1954

1957

WELGO TRADERS
← FREE PARKING →

NT STORE!
WELGO TRADERS

OPEN DAILY 9 TO 9
FREE PARKING

WELGO is on
the march.... watch us
GROW! GROW! GROW!

SHOPPING CENTER
for the entire
FAMILY!

Shop
WELGO
for
COLLEGE
QUALITY
at
Kindergarten
PRICES!

KENTUCKY'S LARGEST SELF-SERVICE DEPARTMENT STORE!

FREE PARKING **OPEN 9 TO 9**

WELGO TRADERS
WINCHESTER - ROAD

SATISFACTION GUARANTEED WITH EVERY PURCHASE



Wildcat Coaches

Head Coach Blanton Collier is surrounded by the same staff of assistant coaches who tutored the Wildcats last season. In front (left to right) are Ermal Allen, Collier, Bill Arnsparger, and Matt Lair. Behind them, John North, Charley Bradshaw, Ed Rutledge and Dominic Fucci.

When quiet-mannered Blanton Collier came on the Kentucky scene three years ago as head man of the gridiron Wildcats, nobody expected miracles but every alumnus and fan were supremely confident that the native Kentuckian would "get the job done."

With only three seasons in the collegiate coaching ranks behind him, the former Paris (Ky.) High School mentor and Cleveland Browns' backfield tutor has produced a remarkable record of 19 wins against only 10 defeats and one tie; achieved Southeastern Conference "Coach of the Year" honor in his very first season at Kentucky; and gained nation-wide respect for both the Wildcats' outstanding record and the philosophy he has instilled in his players.

Coach Collier gives much of the credit to his assistant coaches. The current staff of seven, like their boss, are well grounded in football fundamentals as the result of experience varying from high school coaching to play in the professional ranks and are firm believers in the philosophy that football should teach participants how to get along in a competitive way of life. Two of the group learned their football under Collier in high school, a third was coached by him at Cleveland, and four are UK alums.

Ermal Allen starred at quarterback for the Wildcats from 1939-41 and played one season with the Browns when Collier was backfield coach. He was on the UK staff briefly in 1946, joined again in '48 after his pro stint and stayed on to become backfield coach under Collier.

Bill Arnsparger, a pupil of Collier's at Paris High, directs Kentucky's offensive line. He joined his former coach's staff in 1954 after experience at Miami (O.) University and Ohio State.

Matt Lair, another product of Collier's coaching, returned to his alma mater in 1954 and handles the defensive line. After his playing days as a Wildcat guard, Lair coached at three high schools.

Charley Bradshaw tutors Wildcat ends with a knowledge gained as an outstanding UK flankman (1946-49) and as an assistant coach-junior high co-ordinator at

Montgomery, Ala., Sidney Lanier High. He has been a member of the staff since 1954.

Dominic Fucci, the fourth alumnus coach, is in his third term as a Collier aide. He first helped out at UK in '54 and returned after playing '55 season as a Lions' defensive back.

John North, an alumnus of Vanderbilt, joined the Kentucky staff last year after a full career as collegian, pro player, high school and college coach. He was a Baltimore Colts end for two years and left Tennessee Tech to come to Kentucky as freshman coach.

Ed Rutledge is the newest member of the coaching staff, having reported in the spring of 1956 to take over duties as Freshman backfield coach. Ed played his college ball at Western Kentucky and had an outstanding, three-year coaching record at Danville (Ky.) High.

*"THE OFFICIAL WATCH FOR TIMING THIS GAME IS LONGINES—
THE WORLD'S MOST HONORED WATCH"*

From kickoff to the final gun,
with **Cracker Jack**®
it's twice the fun!



Fresh and Crunchy
with **LOTS MORE** peanuts

Try **NEW** **Cracker Jack**® **Today**

ON SALE IN THE STADIUM

time for Living



More than anything else, a KitchenAid dishwasher brings you the precious gift of *time*. You have time to be a part of things—family fun and friends-after-the-game—secure in the knowledge that all's well in the kitchen.


Indeed, your dishes could not be in better care. Your KitchenAid is produced by Hobart—another way of saying it's *the finest made*. You'll see the evidence everywhere you turn: The new Timed Spray Cycle that "warms up" tableware and dishwasher interior, clears plumbing lines of cold water before the wash action starts. The easy-rolling, cushion-coated racks that take the guess out of loading. The revolving power wash system that leaves your

tableware *hospital-clean*. The separate blower that dries even fine crystal to perfection.

Yet—wonder of convenience—Hobart has contrived to work all these features into the *standard cabinet width*; you don't give up space you sorely need. By all means, see the new KitchenAid by Hobart. You'll find just the model to go with your kitchen, as surely as it goes with your way of life. And see the new food preparer and the electric coffee mill—they're KitchenAid, too!

See the new KitchenAid! Write The Hobart Manufacturing Co., KitchenAid Home Dishwasher Division, Dept. CFP, Troy, Ohio. In Canada: 175 George Street, Toronto, 2.

time for a KitchenAid®

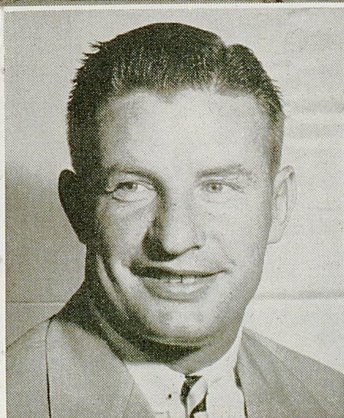
The Finest Made...by 

The World's Largest Manufacturer of Food, Kitchen and Dishwashing Machines

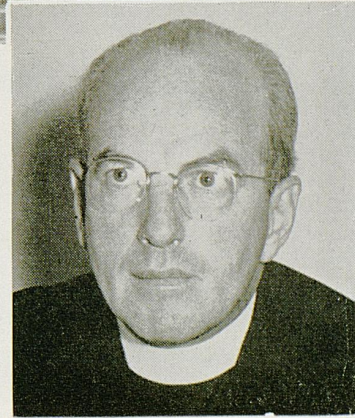


XAVIER UNIVERSITY

PAUL L. O'CONNOR, S.J.
President



HARRY CONNOLLY,
Head Coach



EDWARD J. O'CONNOR, S.J.
Moderator of Athletics

SEE AND HEAR UK COACH COLLIER



CHANNEL 18 brings you Coach Blanton Collier with film and comments on all Kentucky games every Sunday evening. Also, throughout the season, many of the nation's top collegiate games can be seen on WLEX-TV!

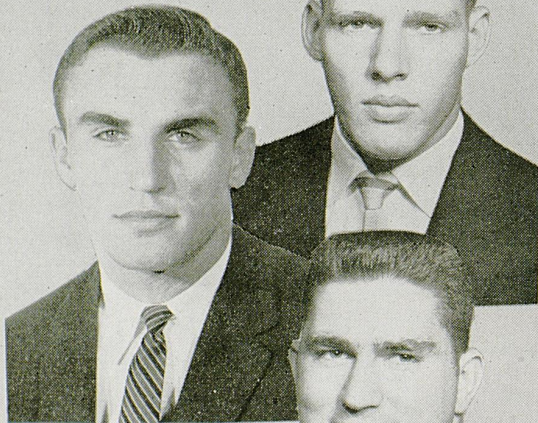
OVER WLEX-TV AND WLEX-RADIO



TUNE TO 1300 each Tuesday and Friday at 6:15 to hear Coach Collier discuss Kentucky football and the game for each week. For an accurate description of all UK games listen to WLEX sportscaster Bob Peters!

LEXINGTON'S NO 1 SPORT STATIONS

WOODY HERZOG
Hamilton, Ohio

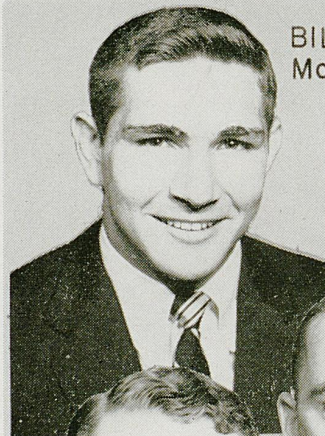


JACK GALLAGHER
Cumberland, Ky.

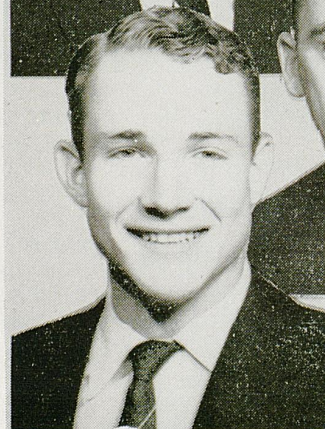
BOB LINDON
Hazard, Ky.



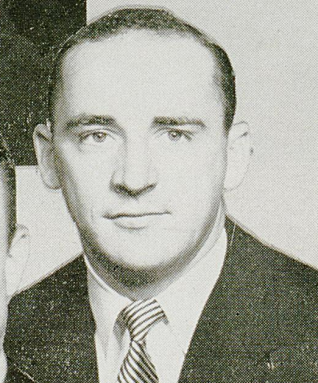
BILL LIVINGS
Montgomery, Ala.



DON BUCHANAN
Barbourville, Ky.



JOHN CORNELIUS
Bethesda, Md.



SCORES OVER STOLL FIELD PUBLIC-ADDRESS SYSTEM COME TO YOU THROUGH THE COURTESY OF THE LEXINGTON NEWSPAPERS



The Phoenix Hotel

"Lexington's Largest and Finest"

2 RESTAURANTS
2 COCKTAIL LOUNGES

"Where Friends Delight To Meet"



LOU MICHAELS
 Swoyerville, Pa.
All-America Tackle

We're Pulling For . . .

KENTUCKY'S
 WILDCATS

*To Make 1957
 A Great Season*



John T.
RIDDell INC.
 ATHLETIC EQUIPMENT
**SAFE and SURE
 BOTH HEAD and FOOT**

- Safety Suspension Helmets of Kralite and Tenite
- Tubular Face Guards
- Football Shoes
- Baseball Shoes
- Track Shoes
- Helmet Lacquer and Thinner

HUNT'S ATHLETIC GOODS CO., INC.
 Phone No. 103
MAYFIELD, KENTUCKY

"WE SHIP THE DAY YOU BUY"

FOR COMPLETE REPORTS ON THIS GAME AND OTHERS BEING PLAYED TODAY, READ THE SPORTS SECTION OF SUNDAY HERALD-LEADER



Follow the *Wildcats!*

The University of Kentucky football games are brought to you each week, over more than 40 local radio stations in Kentucky by the Ashland-Aetna Oil Sports Network.

Try to see all the Wildcat games this fall, but whenever you are at home or in your car, listen to the vivid, play-by-play accounts over the Ashland-Aetna Oil Sports Network.



SPONSORED BY

ASHLAND OIL & REFINING COMPANY
and AETNA OIL COMPANY



For The 9th Straight Year

The 36-Station **ASHLAND-AETNA SPORTS NETWORK** Presents

U OF K FOOTBALL

ORIGINATING OVER

Dial **WLAP** 630
RADIO

SPONSORED LOCALLY BY YORK-LEXINGTON AND BALL & CO.

Other Sports Features Include
Lexington High School Games Friday Nights
Washington Redskins Sunday Afternoons
Selected SEC Games, and

"CAN YOU BEAT BOARDMAN?"
WIN
\$6,500.00

SCORES OVER STOLL FIELD PUBLIC-ADDRESS SYSTEM COME TO YOU THROUGH THE COURTESY OF THE LEXINGTON NEWSPAPERS

Enjoy Your Lexington Visit At The
Ranch Motel

EASTERN CITY LIMITS — U. S. 60

1133 Winchester Road

Phone 2-0777

Lexington, Kentucky

ROBERT LUTES—OWNER

WILLARD TRAYNER, MGR.



CHARCOAL
 BROILED
 STEAKS
 ———
 LOBSTERS



PRIME RIB
 CART

—————
 LOBSTERS

—————
 129 E. Main

FOR COMPLETE REPORTS ON THIS GAME AND OTHERS BEING PLAYED
 TODAY, READ THE SPORTS SECTION OF SUNDAY HERALD-LEADER

R

SAGESER PHARMACY

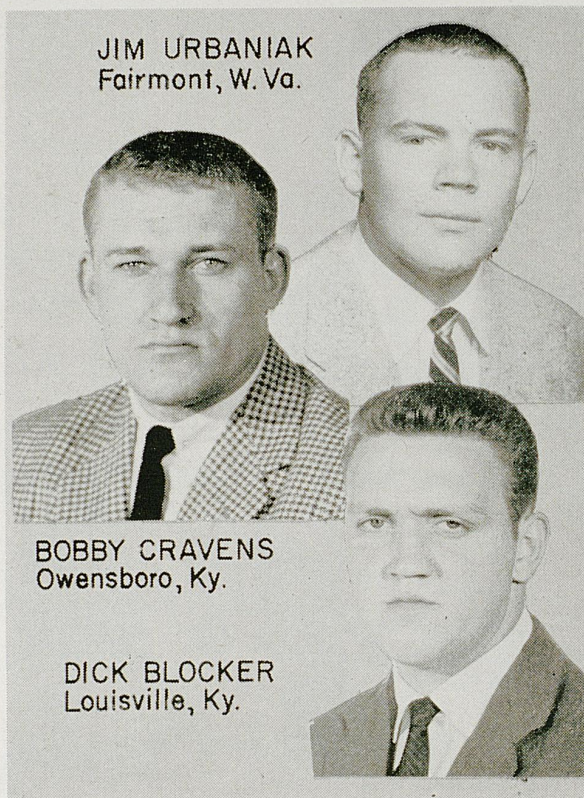
SHORT AND MILL

Phone 4-2662

R

Soon Another
SAGESER DRUGS
In Southland

"ASK YOUR DOCTOR"



Exclusive

LUSTERWAY
DRY Drycleaning

Guarantees cleaner,
brighter, and softer
garments.

BECKER

LAUNDERERS CLEANERS

6 Convenient Locations

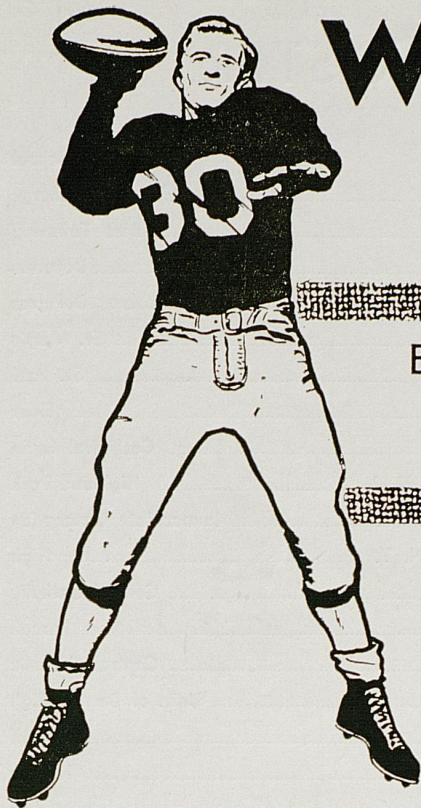
LUX
LAUNDRY

Everything washed
in gentle Lux
Flakes.

Exclusive

NOBODY can Launder a Shirt like BECKER

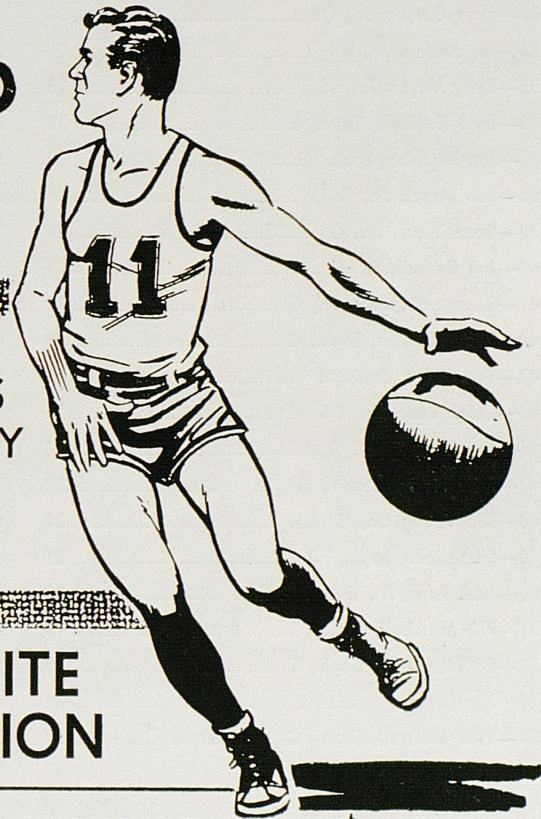
SCORES OVER STOLL FIELD PUBLIC-ADDRESS SYSTEM COME TO
YOU THROUGH THE COURTESY OF THE LEXINGTON NEWSPAPERS



WHAS 840 RADIO SPORTS

EVERY UNIVERSITY OF KENTUCKY
FOOTBALL GAME
PLAY-BY-PLAY WITH GEORGE WALSH

**TUNE TO
840**



51 OUTSTANDING KENTUCKY
COLLEGE BASKETBALL GAMES
INCLUDING EVERY UNIVERSITY
OF KENTUCKY GAME—
WITH CAWOOD LEDFORD
AND DAVE MARTIN

**WHAS— YOUR FAVORITE
SPORTS STATION**

5:15 P.M. DAILY—**REPORT ON SPORTS**

10:15 P.M. NIGHTLY—**KENTUCKIANA SPORTS**

1 to 6 P.M. SATURDAYS—**FOOTBALL JAMBOREE**

FOOTBALL SCORES, INTERVIEWS, PLAY-BY-PLAY AND NEWS

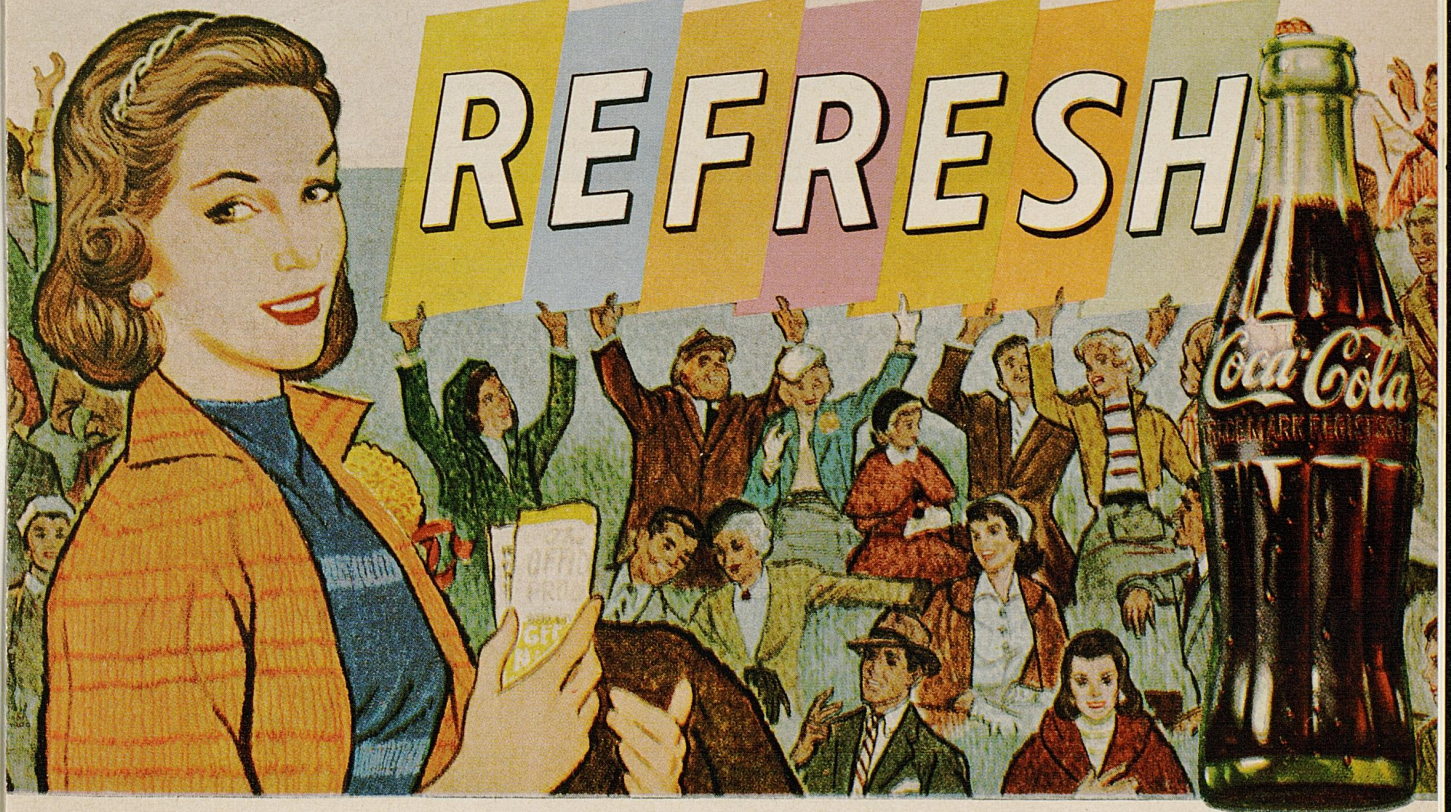
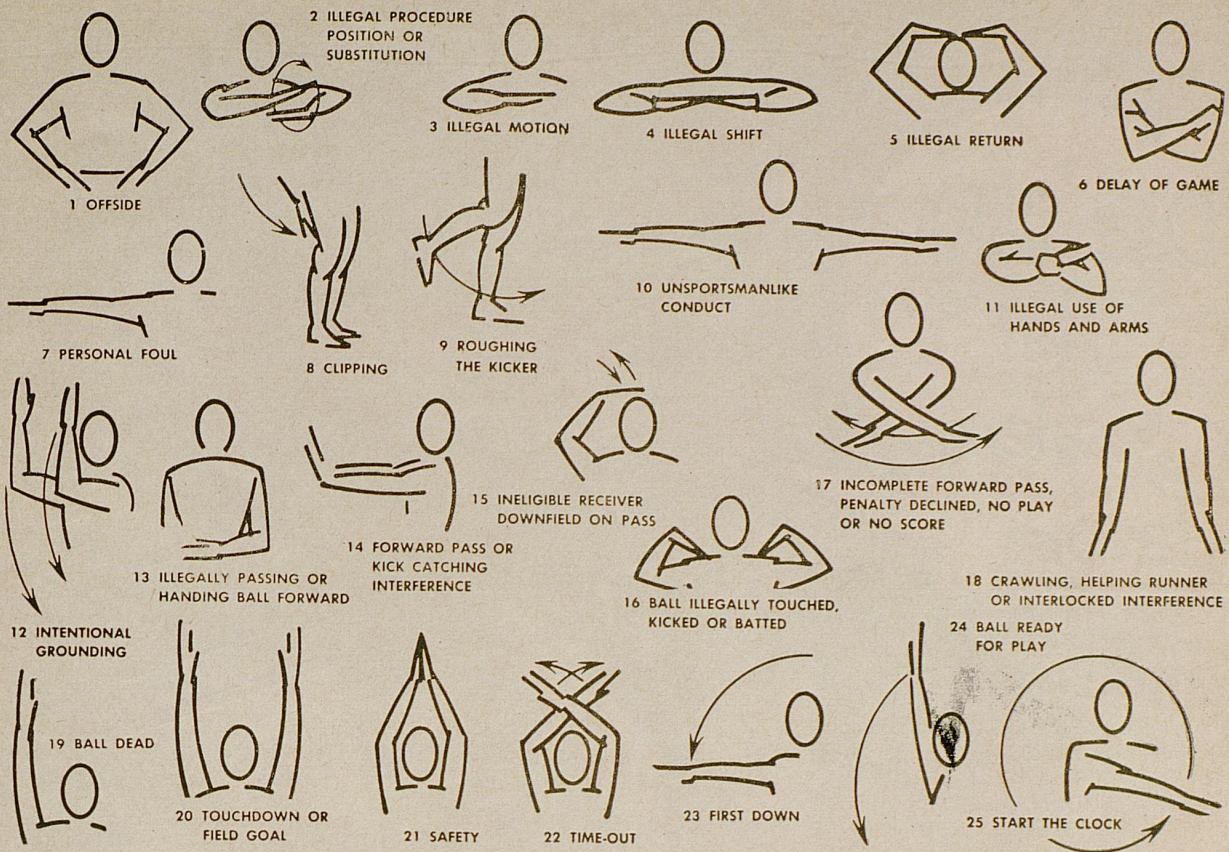
**AND EVERY GAME OF THE KENTUCKY HIGH SCHOOL
BASKETBALL TOURNAMENT**

XAVIER UNIVERSITY ROSTER

No.	Name	Class	Pos.	Age	Ht.	Wt.	Hometown	High School
20	George Noonan	Soph.	HB	19	5'10"	151	Evanston, Ill.	St. George
22	Jim Wessel, Jr.	HB		20	5'10"	158	Hamilton, O.	Ross Township
23	Eddie Thomas	Soph.	HB	23	5'11"	188	Cincinnati	DePorres
24	Myron Kilgore, Sr.	HB		21	5'11"	182	Cincinnati	DePorres
25	Tom Riley, Sr.	HB		21	5'9"	153	Jackson, Mich.	St. Mary's
27	Alan Myers	Soph.	FB	19	5'10"	173	Norwalk, O.	St. Paul
28	Dan Boyle, Jr.	E		22	6'1"	181	Cincinnati	Elder
30	Tom Krebs, Sr.	E		21	6'1"	175	Toledo, O.	Cathedral Latin
31	Faust Coyle, Jr.	FB		20	6'	184	New Brunswick, N. J.	Highland Park
32	Tom Bender	Soph.	QB	19	6'	175	Elmhurst, Ill.	Immaculate Conception
33	Jerry Casper, Jr.	QB		20	6'1"	171	Niagara Falls, N. Y.	High
34	Joe Jordan, Jr.	HB		20	5'10"	166	Toledo, O.	Central Catholic
35	Terry Meyer, Jr.	HB		20	5'8"	172	Cincinnati	Purcell
36	Dale Kopinski	Soph.	E	19	6'	191	Toledo, O.	Central Catholic
37	Jim Machlay	Soph.	G	19	5'10"	191	Detroit, Mich.	Univ. of Detroit High
38	Bob Meyer, Jr.	G		21	5'9"	189	Cincinnati	Purcell
39	Gene Terry, Sr.	C		21	6'	190	Covington, Ky.	Holmes
40	Jim Bushell, Sr.	G		21	5'10"	186	Chicago, Ill.	Leo
41	George Stepanic, Sr.	G		21	5'11"	183	Alveton, Pa.	East Huntington
42	Denny Poillon	Soph.	C	19	6'	193	Fairfield, Conn.	Fairfield Prep
43	Tom Allen	Soph.	E	21	6'1"	191	Niagara Falls, N. Y.	Bishop Duffy
45	Ralph Lane, Jr.	QB		25	6'	182	Cincinnati	Western Hills
46	Jim Link	Soph.	G	26	5'10"	198	Reading, O.	High
47	John Norkus	Soph.	G	18	5'10"	200	Chicago, Ill.	St. Ignatius
48	Bob Young, Sr.	E		21	6'1"	193	Hamilton, O.	Catholic
49	Ed Serieka	Soph.	FB	23	6'	198	Winchester, Mass.	High
50	Jack Paris, Jr.	G		23	5'11"	194	Canton, O.	Central Catholic
51	Bob Marshall, Jr.	T		19	6'1"	194	Chelsea, Mass.	High
52	Ed Wandstrat	Soph.	T	19	6'	205	Cincinnati	Elder
53	Jim Kappas	Soph.	HB	21	5'11"	199	Covington, Ky.	Dixie Heights
54	Tom McGraw	Soph.	C	22	5'10"	201	Cincinnati	Purcell
55	Bob Mallardi	Soph.	E	19	6'1"	185	Cleveland, O.	St. Ignatius
56	John Silvati, Jr.	E		20	6'3"	187	Cincinnati	Purcell
58	Natale Maratea	Soph.	T	19	5'11"	213	Chicago, Ill.	Fenwick
59	Russ Goings, Jr.	E		25	6'2"	213	Stamford, Conn.	High
60	Greg Fennell, Sr.	C		24	6'	204	Washington, D. C.	St. John's
61	Art DelConte, Jr.	T		24	5'11"	218	Philadelphia, Pa.	Southeast Catholic
62	Joe Schroeder, Jr.	T		20	6'2"	219	Hartford, Wis.	High
63	Tom Gonnella	Soph.	T	19	6'2"	223	Niles, O.	McKinley
64	Ed Mazurek	Soph.	T	18	6'3"	228	Stamford, Conn.	High
65	Matt Vilas	Soph.	T	19	6'2"	202	Niagara Falls, N. Y.	High

SCORES OVER STOLL FIELD PUBLIC-ADDRESS SYSTEM COME TO YOU THROUGH THE COURTESY OF THE LEXINGTON NEWSPAPERS





COCA-COLA BOTTLING WORKS OF LEXINGTON, KENTUCKY

Live Modern...sm

Hey Dad, light
into that
Live Modern
flavor!



...box or
Either way you w

XAVIER

PROBABLE STARTING LINEUP

No.	Name	Position
28	DAN BOYLE	LE
62	JOE SCHROEDER	LT
40	JIM BUSHELL	LG
39	GENE TERRY	C
50	JACK PARIS	RG
61	ART DELCONTE	RT
48	BOB YOUNG	RE
45	RALPH LANE	QB
35	TERRY MEYER	LH
31	FAUST COYLE	RH
49	ED SERIEKA	FB

THE MUSKETEER SQUAD

20 Noonan, HB	37 Machlay, G	52 Wandstrat, T
22 Wessel, HB	38 Meyer, B., G	53 Kappas, HB
23 Thomas, HB	39 Terry, C	54 McGraw, C
24 Kilgore, HB	40 Bushell, G	55 Mallardi, E
25 Riley, HB	41 Stepanic, G	56 Silvati, E
27 Myers, FB	42 Poillon, C	58 Maratea, T
28 Boyle, E	43 Allen, E	59 Goings, E
30 Krebs, E	45 Lane, QB	60 Fennell, C
31 Coyle, FB	46 Link, G	61 DelConte, T
32 Bender, QB	47 Norkus, G	62 Schroeder, T
33 Casper, QB	48 Young, E	63 Gonnella, T
34 Jordan, HB	49 Serieka, FB	64 Mazurek, T
35 Meyer, T., HB	50 Paris, G	65 Vilas, T
36 Kopinski, E	51 Marshall, T	

smoke modern **L&M**



box or handy pack ...
you win today with **L&M**

KENTUCKY

PROBABLE STARTING LINEUP

No.	Name	Position
84	DOUG SHIVELY	LE
79	LOU MICHAELS	LT
67	BOB COLLIER	LG
54	FRANK SCHOLLETT	C
60	JIM MILLER	RG
74	BOB LINDON	RT
82	JIM URBANIAK	RE
17	LOWELL HUGHES	QB
20	GLENN SHAW	LH
28	BOBBY CRAVENS	RH
46	BOBBY WALKER	FB

11	Robertson, QB
12	Brueck, QB
15	Bennett, QB
17	Hughes, QB
18	Martin, Jim, QB
19	Charles, E
20	Shaw, HB
21	Curnutte, HB
22	Gallagher, HB
23	Booth, HB
24	Sloan, HB
25	Steckler, HB
26	Herzog, HB
27	Allen, HB
28	Cravens, HB
29	Eanes, FB
32	Hemmer, HB
33	Goins, HB

THE WILDCAT SQUAD

34	Burkholder, G	69	Wilson, G
37	Sammons, T	70	Buchanan, T
40	Tribble, HB	71	Boone, T
43	Morris, FB	72	Bowie, T
44	Wright, R., FB	73	Schrecker, T
46	Walker, FB	74	Lindon, T
51	Living, C	76	Cambron, T
52	Kunkle, C	77	Rhyne, T
53	Lombard, C	78	Martin, John, T
54	Schollett, C	79	Michaels, T
55	Moore, T	80	Cain, E
56	Blocker, C	81	Vaughn, E
60	Miller, J., G	82	Urbaniak, E
61	Talamini, G	84	Shively, E
62	Benson, G	85	Howard, E
65	Johns, G	87	Cornelius, E
66	Spicer, G	88	Mabry, E
67	Collier, G	89	Johnson, E
68	Thomason, G		

PENALTIES

1. Taking more than five times out during either half (except for replacement of injured player).
2. Illegal delay of game.
3. Failure to complete substitution before play starts.
4. Violation of kickoff formation.
5. Player out of bounds when scrimmage begins.

15. Team not ready to play at scheduled time.
16. Violation of rules during intermission.
17. Illegal return of suspended player.
18. Interference by member of offensive team with defensive player making pass interception. (Also loss of down.)

29. Striking an opponent with fist, forearm, elbow or locked hands, kicking or kneeling — Mandatory disqualification of offending player plus loss of fifteen yards.

30. Foul within the one yard line—half the distance to the goal.

LOSS OF FIVE YARDS

6. Putting ball in play before Referee signals "Ready-for-play".
7. Failure to maintain proper alignment of offensive team when ball is snapped. Also, backfield man illegally in motion.
8. Offside by either team or encroachment on neutral zone.
9. Attempt to draw opponents offside.

LOSS OF FIFTEEN YARDS

19. Interference with opportunity of player of receiving team to catch a kick.
20. Illegal use of hands or arms by offensive player.
21. Tackling or blocking defensive player who has made fair catch.
22. Roughing the kicker.
23. Piling up, hurdling, clipping.

OTHER PENALTIES

31. Interference by defensive team on forward pass—passing team's ball at spot of foul.

32. Forward pass being touched by ineligible receiver beyond the line of scrimmage—loss of fifteen yards from spot of preceding down and loss of a down.

10. Crawling by runner.
11. Illegal forward pass (includes intentional grounding of forward pass). Also loss of down.
12. Taking more than two steps after Fair Catch is made.
13. Player on line receiving snap.
14. Any violation of the scrimmage formation.

24. Tackling player out of bounds, or running into player obviously out of play.
25. Coaching from sidelines.
26. Failure to stop one full second following shift.
27. Defensive holding.
28. Invalid Signal for Fair Catch.

33. Illegal touching of kicked ball within opponent's ten yard line — touchback.

34. Flagrant rough play or unsportsmanlike conduct — Mandatory disqualification plus loss of fifteen yards.

35. Eligible pass receiver who goes out of bounds and later touches a forward pass — loss of down.

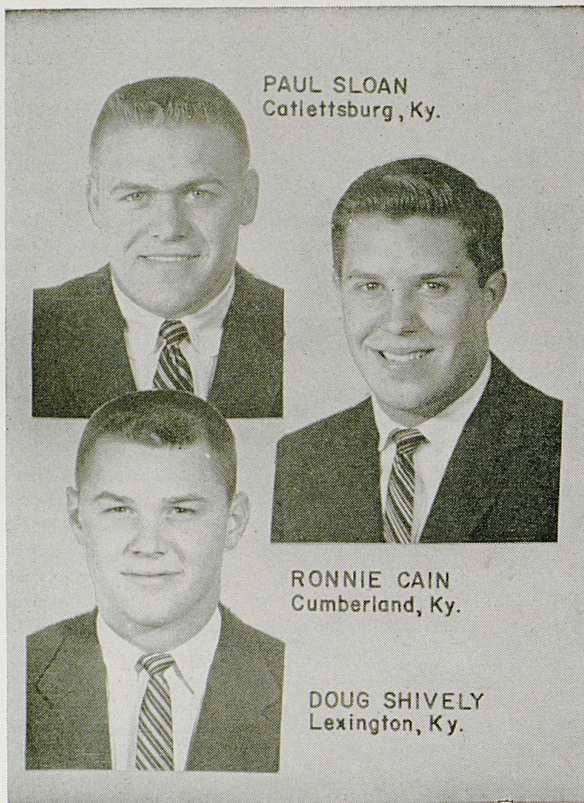


COCA-COLA BOTTLING WORKS OF LEXINGTON, KENTUCKY

UNIVERSITY OF KENTUCKY ROSTER

No.	Name	Class	Pos.	Age	Ht.	Wt.	Ltrs.	Hometown	High School
11	Kenny Robertson, Sr.	QB		21	5'11"	189	2	W. Palm Beach, Fla.	W. Palm Beach
12	Joe Brueck, Soph.	QB		19	6'1"	165	N	Brookhaven, Miss.	Brookhaven
15	Leeman Bennett, Soph.	QB		19	6'	172	N	Paducah, Ky.	Tilghman
17	Lowell Hughes, Soph.	QB		19	6'2"	177	N	Prestonsburg, Ky.	Prestonsburg
18	Jim Martin, Soph.	QB		18	5'10"	190	N	Harrodsburg, Ky.	Harrodsburg
19	Dick Charles, Jr.	E		21	6'	191	N	Murray, Ky.	Murray
20	Glenn Shaw, Soph.	HB		18	6'1"	200	N	Paducah, Ky.	Tilghman
21	Ivan Curnutte, Sr.	HB		21	5'6"	165	1	Ashland, Ky.	Ashland
22	Jack Gallagher, Jr.	HB		20	5'10"	187	N	Cumberland, Ky.	Cumberland
23	Tony Booth, Soph.	HB		18	6'3"	190	N	W. Palm Beach, Fla.	W. Palm Beach
24	Paul Sloan, Jr.	HB		19	5'11"	190	N	Cattlettsburg, Ky.	Cattlettsburg
25	Dick Steckler, Soph.	HB		17	5'11"	170	N	Mt. Carmel, Ill.	Mt. Carmel
26	Woody Herzog, Sr.	HB		20	5'11"	192	2	Hamilton, Ohio	Hamilton Public
27	Dave Allen, Soph.	HB		19	5'11"	180	N	Hamilton, Ohio	Hamilton Public
28	Bobby Cravens, Jr.	HB		19	5'10"	191	1	Owensboro, Ky.	Owensboro
29	Bob Eanes, Soph.	HB		20	5'11"	195	N	Clifton Forge, Va.	Fishburne Prep
32	Mike Hemmer, Soph.	HB		18	5'10"	180	N	Louisville, Ky.	Manual
33	Carl Goins, Soph.	HB		19	6'	190	N	Madisonville, Ky.	Madisonville
34	H. F. Burkholder, Soph.	G		19	5'10"	193	N	Nashville, Tenn.	Montgomery Bell Academy
37	Bill Sammons, Soph.	T		18	6'3"	210	N	Louisville, Ky.	Male
40	Cliff Tribble, Jr.	FB		19	5'10"	184	1	Lebanon, Tenn.	Lebanon
43	Waymond Morris, Jr.	FB		20	5'10"	191	N	Owensboro, Ky.	Owensboro
44	Rich Wright, Soph.	FB		18	6'	202	N	Nappanee, Ind.	Nappanee
46	Bobby Walker, Sr.	FB		21	5'11"	195	2	Middlesboro, Ky.	Middlesboro
51	Bill Livings, Jr.	C		20	6'2"	201	1	Montgomery, Ala.	Sidney Lanier
52	Dennis Kunkle, Soph.	C		19	5'11"	200	N	Beaver, Pa.	Beaver
53	Dick Lombard, Soph.	C		19	6'2"	202	0	Pittsburgh, Pa.	Westinghouse
54	Frank Schollett, Soph.	C		18	6'4"	215	N	Ft. Wayne, Ind.	North Side
55	Don Moore, Jr.	T		20	6'1"	198	0	Owensboro, Ky.	Owensboro
56	Dick Blocker, Jr.	C		19	6'2"	209	0	Louisville, Ky.	St. Xavier
60	Jim Miller, Jr.	G		23	6'1"	190	0	Madisonville, Ky.	Madisonville
61	Bob Talamini, Soph.	G		17	5'11"	200	N	Louisville, Ky.	St. Xavier
62	Pascal Benson, Soph.	G		18	6'	215	N	Henderson, Ky.	Henderson City
65	Jimmy Johns, Soph.	G		18	5'9"	198	N	Morristown, Tenn.	Morristown
66	William Spicer, Soph.	G		25	5'11"	205	0	Irvine, Ky.	Irvine
67	Bob Collier, Sr.	G		20	6'1"	209	2	Jenkins, Ky.	Jenkins
68	Charles Thomason, Soph.	G		18	5'11"	200	N	Philadelphia, Pa.	Rockaart, Ga.
69	Cullen Wilson, Soph.	G		18	6'2"	205	N	Turkey Creek, Ky.	Belfry
70	Don Buchanan, Jr.	T		21	5'11"	206	0	Barbourville, Ky.	Barbourville
71	George Boone, Soph.	T		18	6'2"	195	N	Louisville, Ky.	St. Joseph's Prep
72	Jim Bowie, Soph.	T		22	6'4"	225	0	Detroit, Mich.	MMI
73	Ray Schrecker, Soph.	T		18	6'2"	205	N	Louisville, Ky.	Male
74	Bob Lindon, Jr.	T		21	6'	221	0	Hazard, Ky.	Hazard
76	Jim Cambron, Jr.	T		20	6'2"	224	N	Louisville, Ky.	Flaget
77	Dan Rhyne, Soph.	T		18	6'2"	215	N	Montgomery, Ala.	Sidney Lanier
78	John Martin, Soph.	T		19	6'3"	218	N	Homestead, Pa.	Homestead
79	Lou Michaels, Sr.	T		21	6'1"	230	2	Swoyerville, Pa.	Staunton M.A.
80	Ronnie Cain, Soph.	E		19	6'	203	N	Cumberland, Ky.	Cumberland
81	Charles Vaughn, Soph.	E		18	6'1"	180	0	Celina, Tenn.	Celina
82	Jim Urbaniak, Sr.	E		21	6'	193	2	Fairmont, W. Va.	Fairmont
84	Doug Shively, Jr.	E		20	6'2"	197	1	Lexington, Ky.	Lafayette
85	Ledger Howard, Soph.	E		19	6'1"	175	N	Pineville, Ky.	Pineville
87	John Cornelius, Sr.	E		21	6'4"	205	2	Bethesda, Md.	Chevy Chase
88	Dick Mabry, Soph.	E		19	5'10"	186	0	Lexington, Ky.	Bullis M.A.
89	Joe Johnson, Soph.	E		18	6'1"	190	N	Georgetown, Ky.	Garth

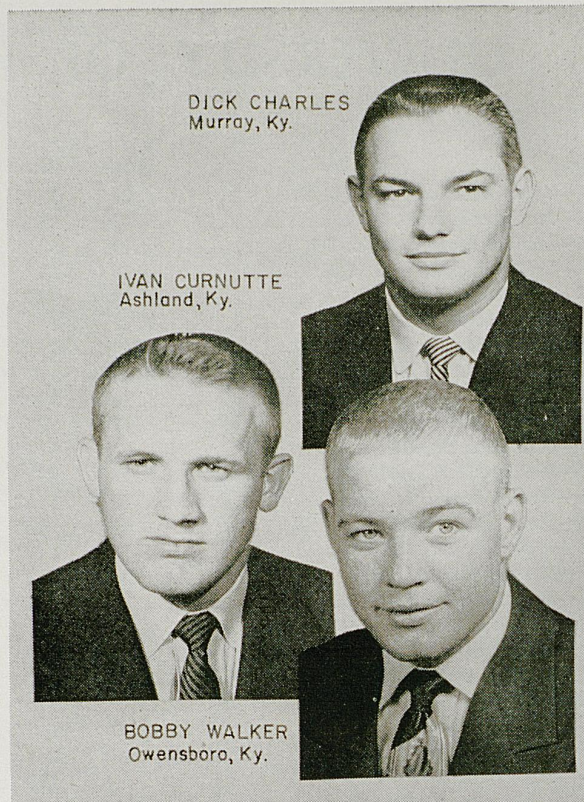
FOR COMPLETE REPORTS ON THIS GAME AND OTHERS BEING PLAYED TODAY, READ THE SPORTS SECTION OF SUNDAY HERALD-LEADER



PAUL SLOAN
Catlettsburg, Ky.

RONNIE CAIN
Cumberland, Ky.

DOUG SHIVELY
Lexington, Ky.



DICK CHARLES
Murray, Ky.

IVAN CURNUTTE
Ashland, Ky.

BOBBY WALKER
Owensboro, Ky.

The Lafayette Hotel

Extends a cordial welcome and an invitation to the football fans to meet with us after the games. Renew old friendships, greet new friends, and enjoy the spirit of good fellowship that abounds.

Perry Lumber Co.

"Contractors & Builders"

- Ready Mix Concrete
- Lumber
- Builders Supplies
- Roofing
- Mill Work
- Hardware
- Paint
- Sporting Goods
- Appliances
- Marine Supplies

— Easy Parking —

246 WALTON AVE.

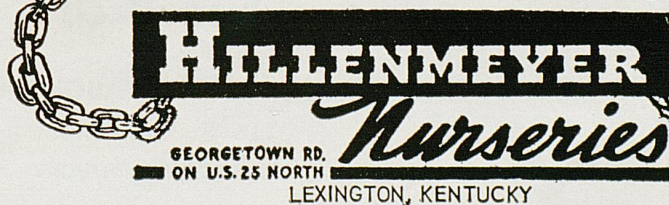
LEXINGTON, KY.

SCORES OVER STOLL FIELD PUBLIC-ADDRESS SYSTEM COME TO YOU THROUGH THE COURTESY OF THE LEXINGTON NEWSPAPERS

*The Wildcats' Turf has
that Winning Sparkle*



Cultivated Kentucky Bluegrass Seed and G&F (Greens & Fairway) fertilizer were used on Stoll Field, which has the distinction of being one of the finest playing fields in the United States. Your turf can sparkle, too.



*The 3 big links
to a
Sparkling Turf*



JIM BOWIE
Detroit, Mich.

LOWELL HUGHES
Prestonsburg, Ky.

PASCAL BENSON
Henderson, Ky.



BOB EANES
Clifton Forge, Va.

TONY BOOTH
W. Palm Beach, Fla.

JOE JOHNSON
Georgetown, Ky.

Taylor Tire Company

Incorporated

Tires — Batteries — Brakes — Clutch — Starter — Lights
Ignition — Wheel Alignment — Sales and Service

24 Hour  Service

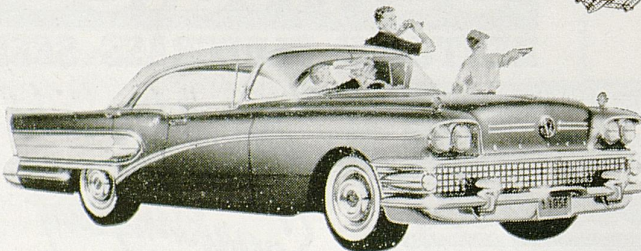
"BUDGET TERMS"

Vine at Southeastern

Phone 2-7127

Lexington, Ky.

THE AIR BORN B-58 BUICK



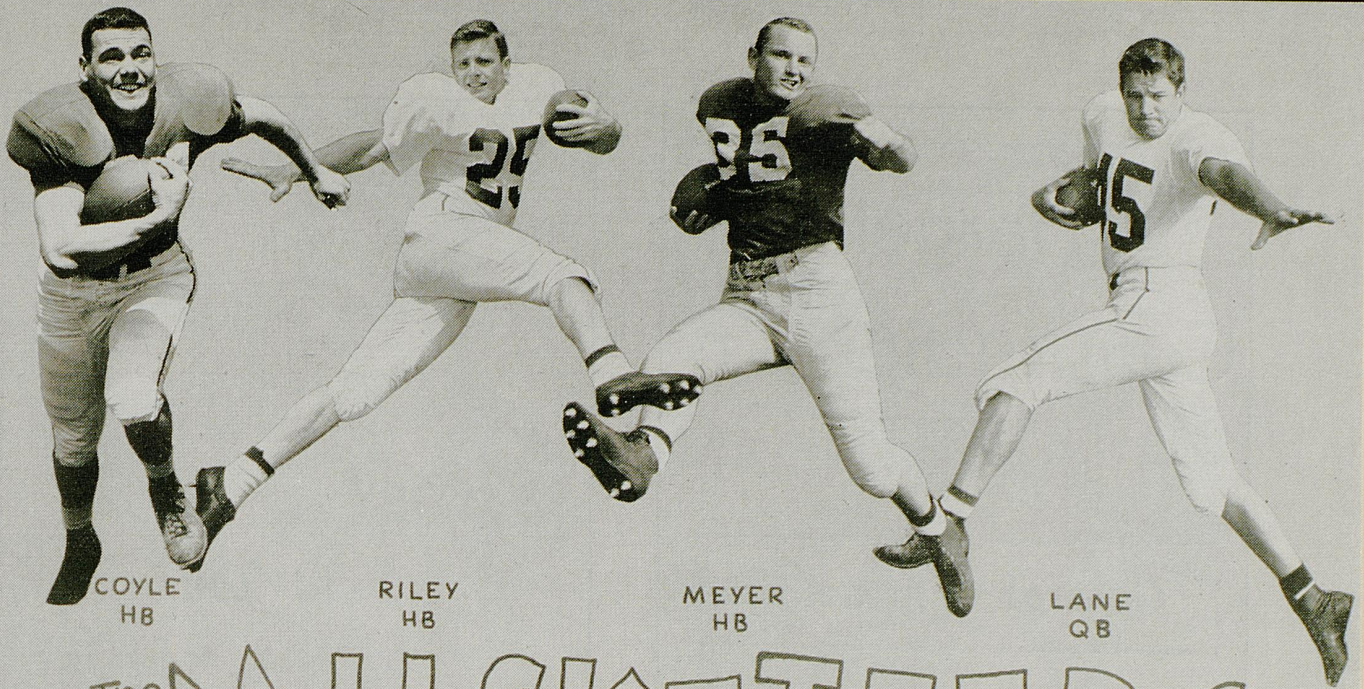
1958 Buick SPECIAL 4-Door, 6-Passenger Riviera Model 43

See it at

SHUG GLENN BUICK, INC.

116 E. High Street
LEXINGTON, KENTUCKY

SCORES OVER STOLL FIELD PUBLIC-ADDRESS SYSTEM COME TO
YOU THROUGH THE COURTESY OF THE LEXINGTON NEWSPAPERS



COYLE
HB

RILEY
HB

MEYER
HB

LANE
QB

The MUSKETEERS

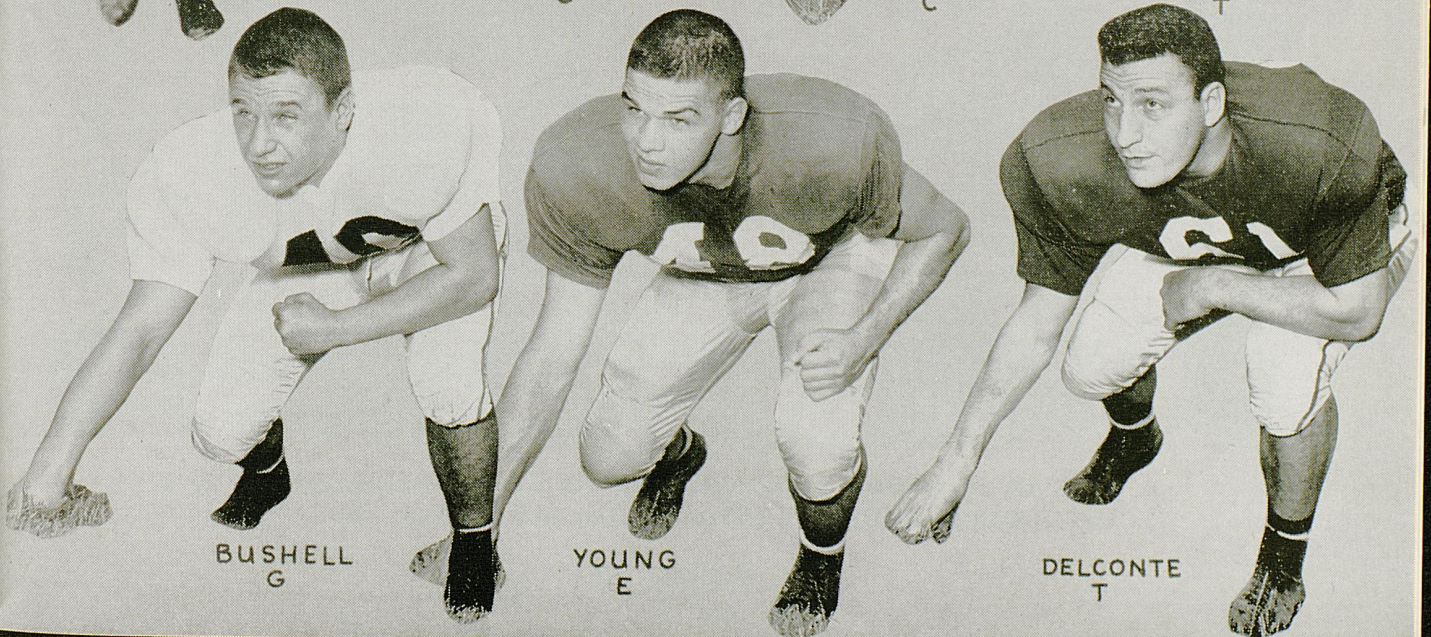


BOYLE
E

PARIS
G

TERRY
C

SCHROEDER
T



BUSHELL
G

YOUNG
E

DELCONTE
T

Hargett Construction Co.

INCORPORATED

General Contractors

Phone 2-2992

113 Walton Avenue

Lexington, Ky.

ONE STOP SHOPPING

With

*A Lunch Counter and
Large Restaurant*

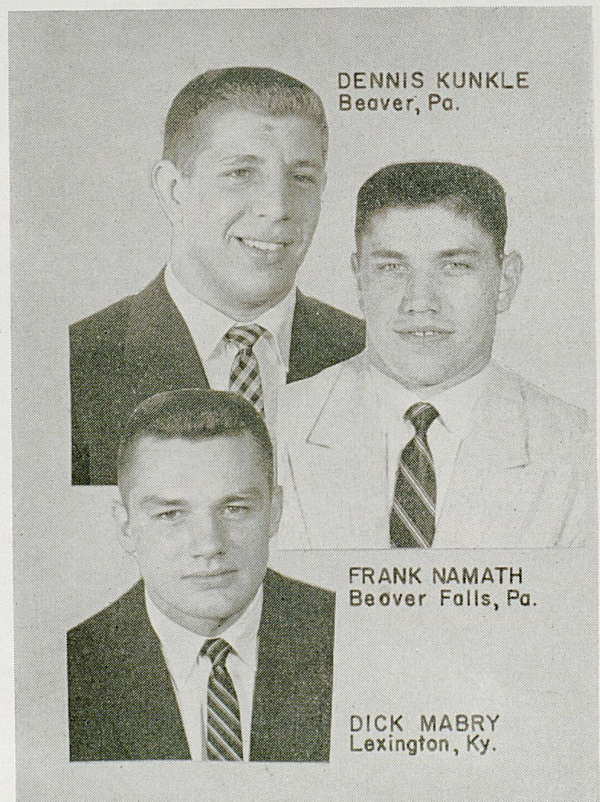
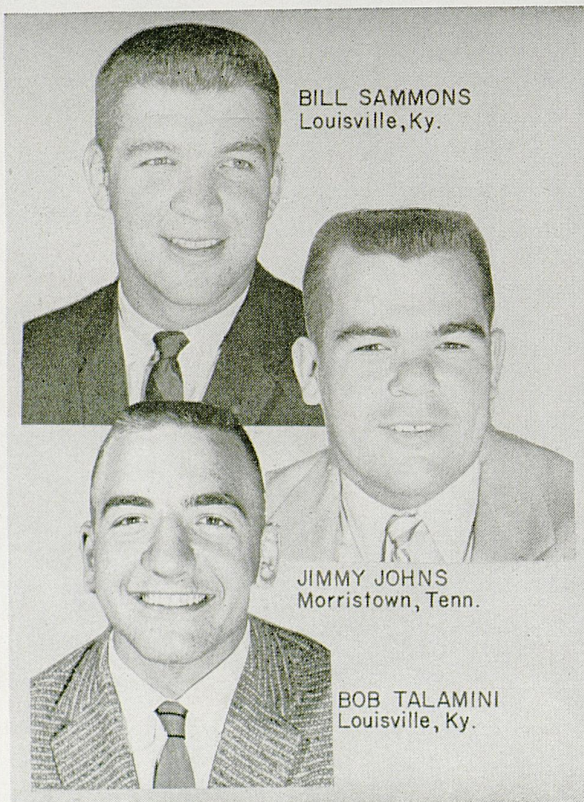
McCRORY'S

5-10-25c

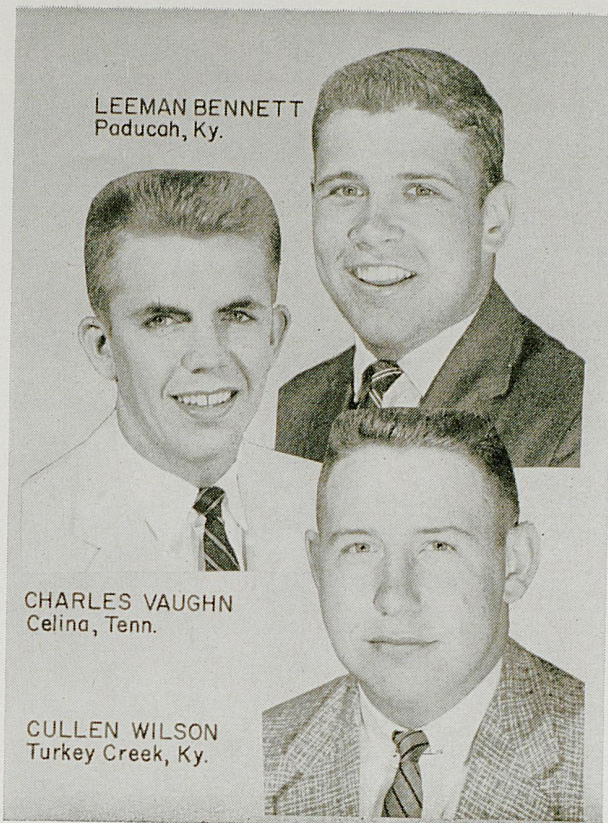
STORE

Phoenix Hotel Building

Downtown Lexington



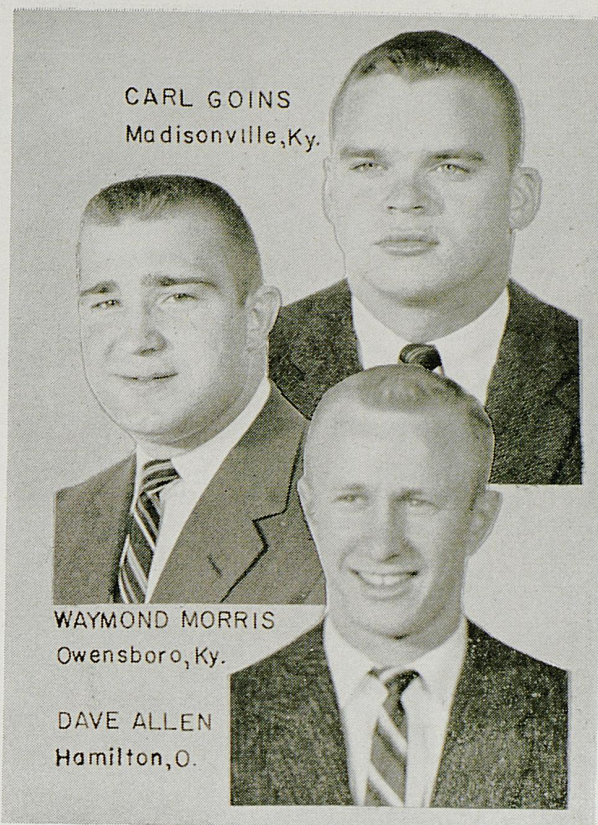
SCORES OVER STOLL FIELD PUBLIC-ADDRESS SYSTEM COME TO
YOU THROUGH THE COURTESY OF THE LEXINGTON NEWSPAPERS



LEEMAN BENNETT
Paducah, Ky.

CHARLES VAUGHN
Celina, Tenn.

CULLEN WILSON
Turkey Creek, Ky.



CARL GOINS
Madisonville, Ky.

WAYMOND MORRIS
Owensboro, Ky.

DAVE ALLEN
Hamilton, O.

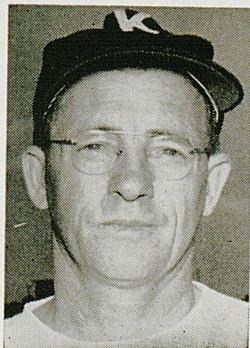
THE STORE WHERE QUALITY LEADS

Standard furniture company

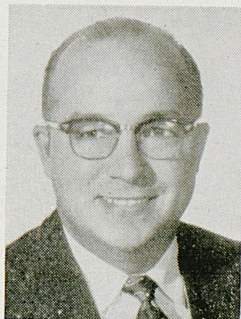
221 East Main Street

Lexington, Kentucky

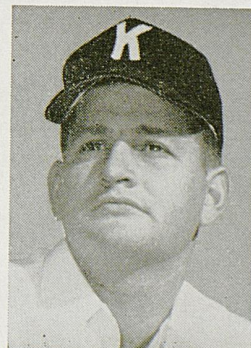
PRICES TO FIT EVERY BUDGET



BUSTER BROWN
Equipment Manager

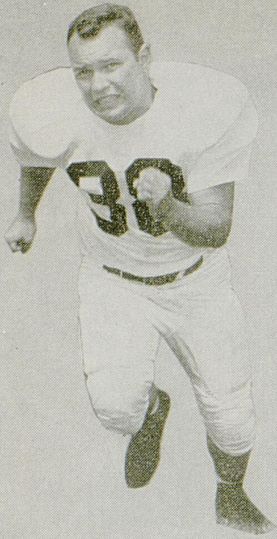


KEN KUHN
Publicity Director



JOHN (RUSTY) PAYNE
Trainer

FOR COMPLETE REPORTS ON THIS GAME AND OTHERS BEING PLAYED TODAY, READ THE SPORTS SECTION OF SUNDAY HERALD-LEADER



MEYER
G



THOMAS
HB

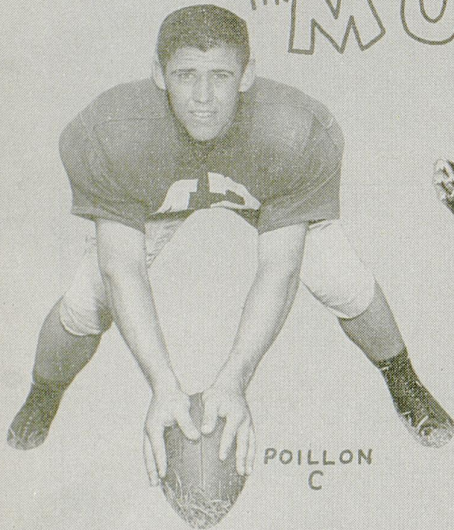


CASPER
QB



GOINGS
G

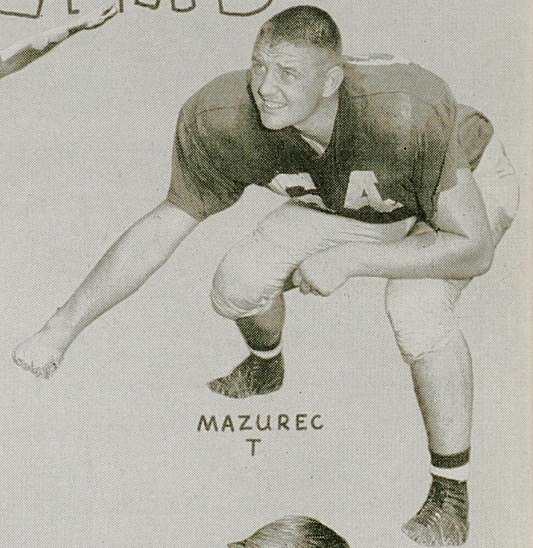
The MUSKETEERS



POILLON
C



SERIEKA
FB



MAZUREK
T



SILVATI
E



MARSHALL
T

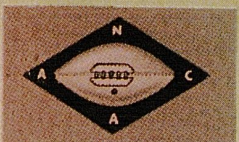


STEPANIC
G

LONGINES
is official timing
watch for
sports associations
the world over
including:



U.S. OLYMPIC COMMITTEE



NATIONAL COLLEGIATE
ATHLETIC ASSOCIATION



NATIONAL AERONAUTIC
ASSOCIATION



AMERICAN POWERBOAT
ASSOCIATION



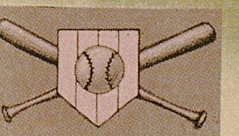
NATIONAL HORSE SHOW
ASSOCIATION



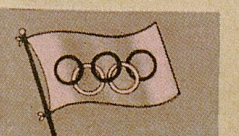
NATIONAL SKI ASSN.



NATIONAL FOOTBALL
LEAGUE



MAJOR LEAGUE BASEBALL



OLYMPIC WINTER GAMES
1960

OFFICIAL WATCH FOR TIMING THIS GAME

Longines

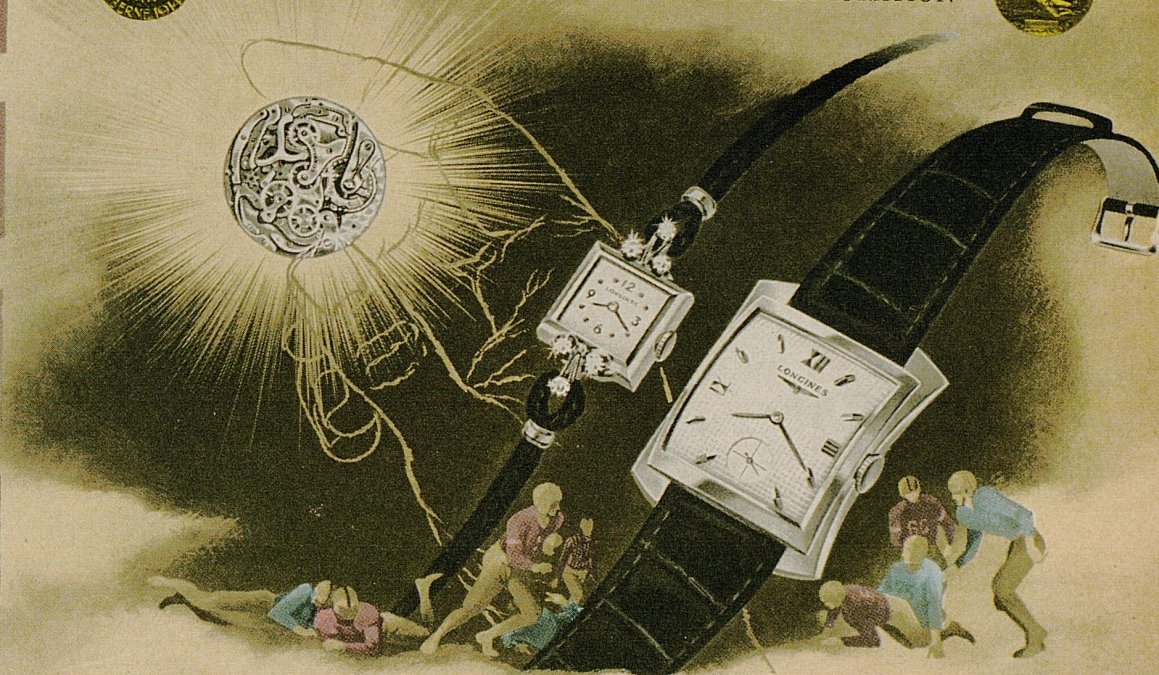
THE WORLD'S *Most Honored* WATCH

10 WORLD'S FAIR GRAND PRIZES • 28 GOLD MEDALS

HIGHEST OBSERVATORY HONORS FOR ACCURACY

OFFICIAL WATCH FOR CHAMPIONSHIP SPORTS

THE FIRST WATCH OF AVIATION AND EXPLORATION



LONGINES HONORS YOUR TIME

The pre-eminence of Longines in sports timing results from those inbuilt qualities of accuracy and dependability which have made Longines *the world's most honored watch*. These are the identical qualities which have won for Longines the highest honors to which a watchmaker can aspire

—including ten world's fair grand prizes, 28 gold medals, highest observatory awards for accuracy. A Longines watch will honor *your time*. And, among Longines' 300 fine watch models there is the perfect style and type *for you*. Your Longines-Wittnauer Jeweler will be *honored* to serve you.

Illustrated—Longines Starlight Serenade L-J 6, elegant 14K gold watch with 6 diamonds, \$175;

Longines Presidency "E", 14K gold case, \$125. Other models from \$71.50. Federal tax included.

Longines-Wittnauer Watch Company

SINCE 1866 MAKER OF WATCHES OF THE HIGHEST CHARACTER

New! Sunbeam MIXMASTERS

AUTOMATIC
for every family's mixing needs

New Ultra-smart styling—beautiful colors *New* Features for easier, better food preparation

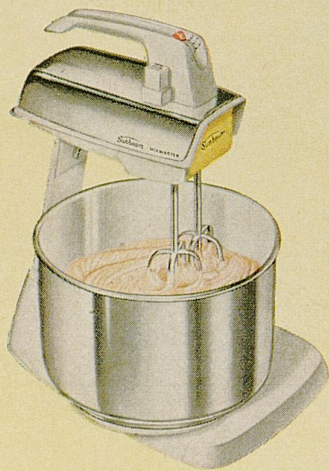
New Deluxe Sunbeam MIXMASTER

The new Deluxe Sunbeam Mixmaster is America's finest! New twelve speeds, larger Bowl-Fit beaters, automatic Bowl-Speed control give perfect mixing results. Enjoy higher, finer textured cakes; fluffier mashed potatoes; smoother icings and sauces. All foods taste better. Blender, food chopper, meat grinder, juice extractor available at extra cost. From \$45.50*



New Sunbeam MIXMASTER

TWO-IN-ONE COMBINATION



On a stand or in your hand

A NEW Mixmaster for greater value and mixing versatility. Larger "full-mix" beaters whip, beat, fold, blend, stir and mix foods thoroughly. Has THUMB-TIP speed control and beater ejector. Converts to powerful hand mixer by slipping off stand. Available in white and chrome. From \$27.95*

Look for the MARK OF QUALITY

See your **Sunbeam** dealer.
THE BEST ELECTRIC APPLIANCES MADE

New Sunbeam MIXMASTER HAND MIXER



A NEW Hand Mixer with the power to mix foods thoroughly. Larger "full-mix" beaters whip, beat, fold, blend, stir and mix foods evenly—results always perfect. Has THUMB-TIP beater release and speed control—also wide base heel rest. Always handy—stores on wall. From \$19.95*

You get all these advantages with SUNBEAM MIXMASTER and SUNBEAM MIXMASTER Hand Mixer



SIX CONVENIENT SETTINGS



THUMB-TIP CONTROL



PUSH-BUTTON BEATER EJECTOR



CONVENIENT HEEL REST



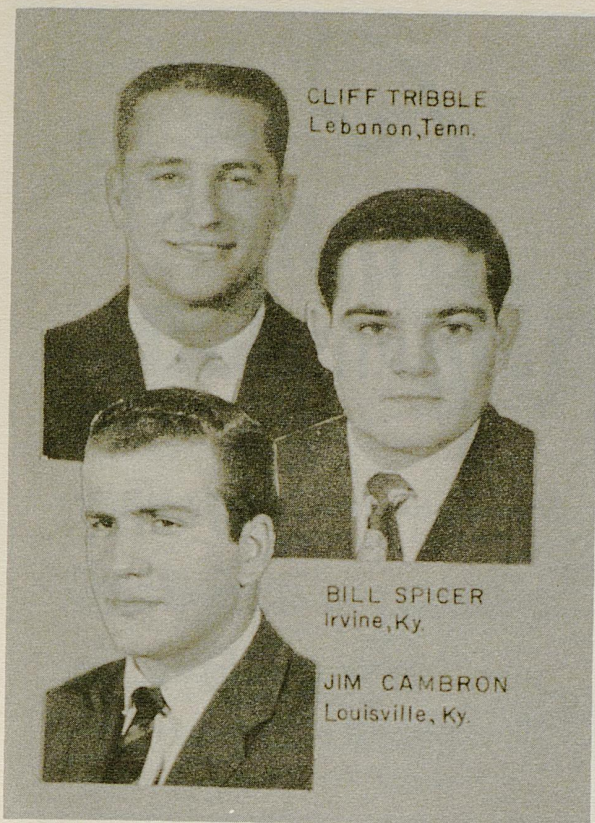
STORES EASILY ALWAYS HANDY

*Manufacturer's recommended Retail or Fair Trade price.

See Sunbeam Mixmasters demonstrated on Sunbeam sponsored NCAA Football Games and the Perry Como Show over NBC-TV, also on Premiere Performance.



©S.C. ©SUNBEAM, MIXMASTER, MIX-FINDER



CLIFF TRIBBLE
Lebanon, Tenn.

BILL SPICER
Irvine, Ky.

JIM CAMBRON
Louisville, Ky.



DON MOORE
Owensboro, Ky.

JIM MILLER
Madisonville, Ky.

DRESS UP FOR FALL!

our new
"WILDCAT"
by
WINTHROP

the new
SWEPT-WING
saddle
with the
FORWARD
LOOK...

Something old and something
new . . . the traditional favorite
saddle with modern new
swept wing styling. In the smartest
combinations . . . of course!



12.95

- Black saddle & Dirty Buck
- Black saddle & Cordovette



322 West Main Street Lexington, Kentucky

NOW... IN THE NEW SHOE DEPT.

FOR COMPLETE REPORTS ON THIS GAME AND OTHERS BEING PLAYED
TODAY, READ THE SPORTS SECTION OF SUNDAY HERALD-LEADER

Buy with Confidence at . . .



Open Mondays Until 9 p.m.

Spanjian
PASADENA

Manufacturers of Exclusive Athletic
Clothing

Leaders in Style and Performance

HUNT'S ATHLETIC GOODS CO., INC.

Phone No. 103

MAYFIELD, KENTUCKY

"WE SHIP THE DAY YOU BUY"

The Association Of
Men's Stores Of Lexington

SHOP DOWNTOWN
for better selections

The men's stores of downtown Lexington always offer a tremendous variety of authentic fashions for Fall, Winter, Spring and Summer. If you are shopping for men's clothing or accessories, you can save time by visiting any of the six stores listed below.

ANGELUCCI & RINGO
BOMANZI
GRAVES, COX & CO.

KAUFMAN'S
MAXSON'S
MEYERS



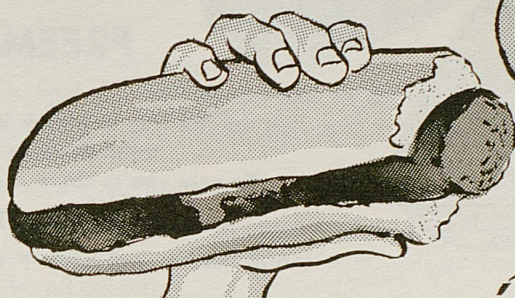
SCORES OVER STOLL FIELD PUBLIC-ADDRESS SYSTEM COME TO
YOU THROUGH THE COURTESY OF THE LEXINGTON NEWSPAPERS

have a real treat . . .

ARMOUR

FRANKS

with the
"OPEN-FIRE"
FLAVOR



Best Wishes

to

Coach Collier

and

his Wildcats!

L. R. COOKE

180 E. HIGH
PHONE 5-2110

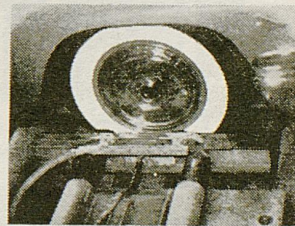
CHEVROLET

OPEN NIGHTS
CLOSED SUNDAY

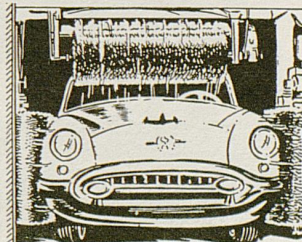


JIMMY BUTTS
Minit Auto Wash

Now Two Locations
MIDDLE OF MIDLAND and
550 SOUTH BROADWAY



Tires are cleaned snow white or
blacked automatically.



Tops and sides are washed auto-
matically.

**Slickest,
Quickest
CAR
WASH
In Town—**

FOR COMPLETE REPORTS ON THIS GAME AND OTHERS BEING PLAYED
TODAY, READ THE SPORTS SECTION OF SUNDAY HERALD-LEADER

SERVING LEXINGTON OVER 38 YEARS



Freeman's
shoes of distinction



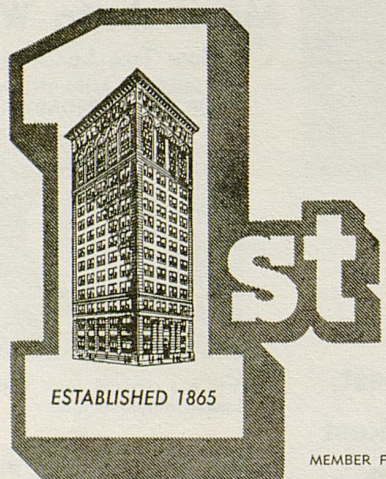
FREEMAN'S

QUALITY
SHOES
for
Men • Women
Children

The way you look is important . . .
right down to your shoes!
Be sure you're there . . . in the right pair!

Most Styles — \$12.95 to \$19.95

LOUISVILLE • PADUCAH • NASHVILLE • CINCINNATI



ESTABLISHED 1865

Winning
More
Friends
Every
Season!



SAFE AS AMERICA
U.S. SAVINGS BONDS

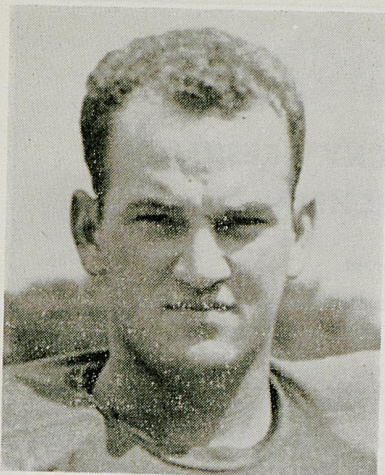
MEMBER FEDERAL DEPOSIT INSURANCE CORPORATION

MEMBER FEDERAL RESERVE SYSTEM

**FIRST NATIONAL BANK
and Trust Company**

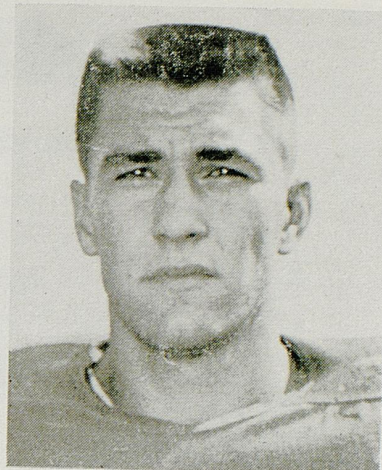
OUR 93rd YEAR OF SERVICE IN THE BLUE GRASS AREA

SCORES OVER STOLL FIELD PUBLIC-ADDRESS SYSTEM COME TO
YOU THROUGH THE COURTESY OF THE LEXINGTON NEWSPAPERS



DON SINOR

Meet the "KITTENS"



JOHN SLACK

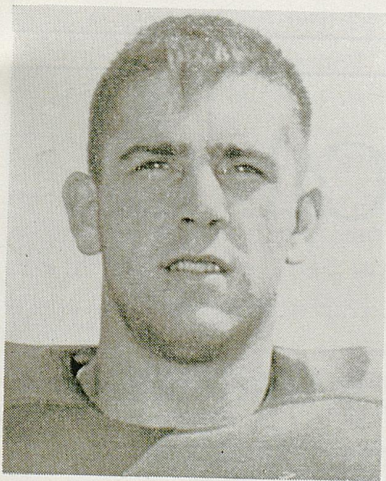
DON SINOR—An All-County, All-Conference, All-State and All-South selection, Don is considered by Coach Collier to be a top prospect for filling the gap to be vacated by All-America tackle Lou Michaels. A Hazard High graduate, Don stands 6-1, weighs 210 and gives a good account of himself in freshman action.

JOHN SLACK—One of only two Kittens with previous work at the center position, John was a valuable asset to this year's squad. The Newport boy was only an All-Conference honorable mention griddier in high school, but has shown fine capabilities in his first season of college ball. John checks in at 6-2, 202 and tosses the shot in track in the off season.

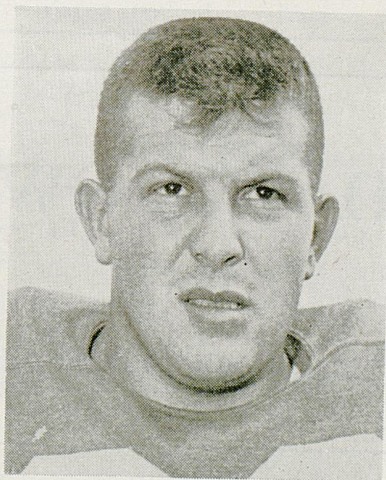
CHARLIE STURGEON—The "Owensboro Flash" joined with Calvin Bird this season in forming one of the finest pair of halfback performers the frosh have had in years. He compiled a 7.5 running average, caught three passes, was number two punt and kickoff return man, and scored 18 points in the UK freshman team's three games. He had a 54-yd. TD run against the Baby Vols.

RALPH WALL—An outstanding guard prospect from Saltville, Virginia. Held his high school extra point record. Ralph is a 205 pounder who stands 5-10 and can handle himself well in the roughest going. Plans to coach after graduation and his coaches feel he will be a good one.

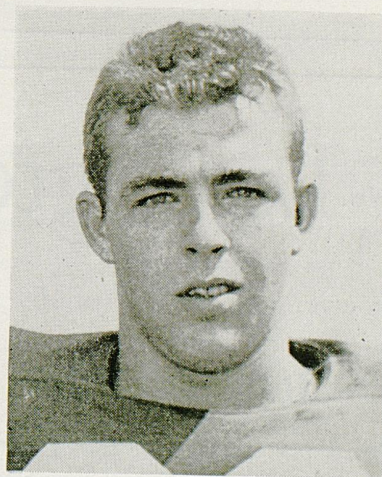
DICK WROBLESKI—A 6-1, 200 pound end of Jeffersonville High school fame. Dick was team captain and All-State honorable mention choice. Studying to become an engineer after graduation, but might turn to coaching if he picks up enough football knowledge.



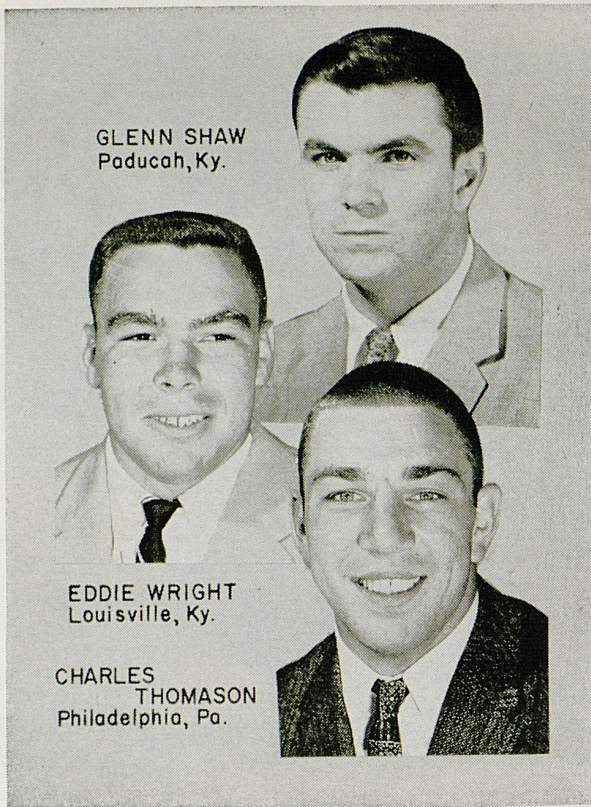
CHARLIE STURGEON



RALPH WALL



DICK WROBLESKI



GLENN SHAW
Paducah, Ky.

EDDIE WRIGHT
Louisville, Ky.

CHARLES
THOMASON
Philadelphia, Pa.

KENTUCKY FRESHMAN SCHEDULE

Date	Opponent	Site	UK	Opp.
Sept. 28	Vanderbilt Freshmen (A)..	27	13	
Oct. 21	Cincinnati Freshmen (A) ..	41	18	
Nov. 8	Tennessee Freshmen (H) ..	27	6	

1956 RESULTS

20	Vanderbilt Freshmen	13
39	Cincinnati Freshmen	7
19	Tennessee Freshmen	0

WE INVITE YOU TO STAY AT
TOWN HOUSE MOTEL

Lexington's Newest and Most Modern Air-Conditioned Motel

S. LIME AT ROSE

PHONE 5-5274

LEXINGTON, KY.

Lexington Yellow Cab Co.

Inc.

ALL
RADIO CABS

Dial 2-2230

ALL
RADIO CABS

FOR COMPLETE REPORTS ON THIS GAME AND OTHERS BEING PLAYED
TODAY, READ THE SPORTS SECTION OF SUNDAY HERALD-LEADER

The National Football Foundation and Hall of Fame

NEW BRUNSWICK

NEW JERSEY

Today's game is part of the nationwide celebration of National Football Foundation and Hall of Fame Day, an observance in which hundreds of colleges, universities and high schools throughout the country are cooperating to help reaffirm the game's value as both a great amateur sport and an established part of our nation's educational structure. This movement for greater recognition of the game is being directed by the National Football Foundation and Hall of Fame,* a non-profit service organization with headquarters at Rutgers University.

The Football Hall of Fame will be built on the Rutgers campus in New Brunswick, New Jersey, by the National Football Foundation. This shrine to American football will honor the star players and coaches of yesterday who have distinguished themselves not only as athletes and teachers, but as outstanding citizens. Equally significant, the Hall of Fame will stand as a symbol of the importance of the game to our youth today and in the years to come.

Programs of the National Football Foundation and Hall of Fame have been designed to point toward these six basic long-range goals:

1. Marshall the active support and counsel of men who know football and believe in the game as a vital force in helping train our youths for the competitive business of everyday living.
2. Muster forces and funds for the erection of the Hall of Fame.
3. Generate enthusiasm among young men and instill the desire to participate in clean, well-coached and well supervised amateur football—for the game itself.
4. Assist groups seeking to guarantee that football retains its place in the educational process.
5. Demonstrate how football helps prepare for success in life by informing the public on notable contributions to public service, business and national security by men who have played football in school or college.
6. Conduct and stimulate research on the academic achievements and post-graduate careers of football players.

The National Football Foundation and Hall of Fame is a mobilization of men and associations devoted to football. It has been formally endorsed by the National Collegiate Athletic Association, American Football Coaches Association, College Sports Information Directors of America, Football Writers Association of America, and the New Jersey Legislature. Interest and support also have been pledged by prominent men in education, communications, business, industry and the armed forces.

* (Contributions to the Foundation are tax exempt; persons desiring to support the Hall of Fame may send contributions to the National Football Foundation and Hall of Fame, Rutgers University, New Brunswick, New Jersey.)

Everything for the Student

McVEY HALL

UNIVERSITY OF KENTUCKY

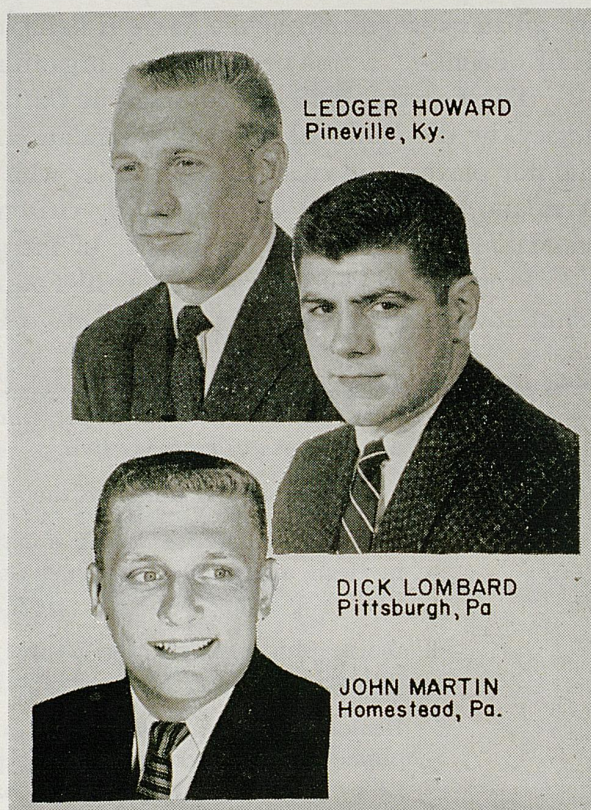
Campus Book Store



JIM MARTIN
Harrodsburg, Ky.

H. F. BURKHOLDER
Nashville, Tenn.

JOE BRUECK
Brookhaven, Miss.



LEDGER HOWARD
Pineville, Ky.

DICK LOMBARD
Pittsburgh, Pa.

JOHN MARTIN
Homestead, Pa.



When the Chips are Down and You Must Produce—

you'd better count on the guy who can deliver the best goods the fastest! There is not a person who has handled printing who has not needed fine engravings in the fastest time possible. Lexington Photo-Engraving Company is geared for "Fast Production . . . Fine Reproduction". We supply newspapers, magazines, and printers throughout Central Kentucky with the finest engravings obtainable anywhere.

LEXINGTON PHOTO-ENGRAVERS

223 W. SHORT ST.

PHONE 5-5015

SCORES OVER STOLL FIELD PUBLIC-ADDRESS SYSTEM COME TO YOU THROUGH THE COURTESY OF THE LEXINGTON NEWSPAPERS



DANCE

★ **TONITE!**

IN BEAUTIFUL

Joyland Casino

★ **BEST BANDS IN THE LAND**

★ **BEAUTIFUL SURROUNDINGS**

★ **MIXED DRINKS**

★ **HOME OF THE NATIONS NAME BANDS**

Joyland Casino

Just out of Lexington On the Paris Pike

LIKE YOUR PLEASURE **BIG?**



*MORE FULL-FLAVORED
SATISFACTION... FROM THE
WORLD'S BEST TOBACCOS!*

***PLUS KING-SIZE
FILTER ACTION!***

*A BETTER TOBACCO
FILTER BECAUSE IT'S
PACKED SMOOTHER
BY ACCU-RAY!*

*SO HAVE YOUR FUN AND MILDNESS, TOO!
SMOKE FOR REAL... SMOKE CHESTERFIELD
—KING OR REGAL REGULAR*

CHESTERFIELD KING HAS EVERYTHING!

© Liggett & Myers Tobacco Co.