

University Archives  
Margaret I. King Library - North  
University of Kentucky  
Lexington, Kentucky 40506

*Homecoming 1970*

# Kentucky vs Auburn



STOLL FIELD

• OCTOBER 3, 1970

• OFFICIAL PROGRAM

• \$1.00 Est. Price .95  
Tax ..... .05

There is no finer suit of clothes in the world. Oxford sets the absolute standard. Every suit a masterpiece.



Hunter Haig, shapes its suits for the now look with the longer leaner line. Charisma by another name: Hunter Haig.

Dorchester brings together the best of all worlds in men's wear today. At such reasonable prices, you'll be delighted.



Classic styling of fabric and tailoring insures a large devoted following of discriminating wearers. One Hickey-Freeman suit begets another.

The almost invisible K on the breast pocket identifies your Kuppenheimer suit. But you'll know it's a Kuppenheimer when you feel the fantastic fit.



In Lexington you'll find these famous-label suits only at Graves, Cox

Each of these nationally famous brands has built its reputation on the impeccable Quality of its fabrics and tailoring. And Graves, Cox's reputation has been built by masterful fitting of these famous-label garments, with a philosophy of business that insists on your absolute satisfaction.



Graves, Cox's two convenient locations . . .  
126 West Main, Downtown, and in  
Turfland Mall . . . Visit our custom  
tailoring and shirt departments.



# DAWAHARE'S

## Scouting Report on Dawahare's

FOUNDED: 1911

DEPTH: Whitesburg, Neon, Corbin, Pikeville, Hazard and two Lexington Locations

PERSONNEL: Willie, Woody, Dee, Frank, Hoover, Martin and A. F.

STRONG POINTS: Fashion, Quality and Selection

WEAK POINTS: Entire Family spends too much time supporting athletics

### STATISTICALLY SPEAKING

#### KENTUCKY LEADERS

RUSHING						
	Carries	Gain	Avg.	TD's		
Clymer, HB	27	147	3.9	0		
Bowens, HB	38	99	2.6	2		
PASSING						
	Att.	Comp.	Pct.	Int.	Yds.	TD's
Scruggs	21	13	61.9	1	175	2
Forston	47	22	46.8	2	194	0
RECEIVING						
	Caught	Yards	TD's			
Crowe, TE	9	76	0			
Bowens, HB	6	41	0			
Grant, SE	6	72	0			
PUNTING						
	Punts	Yards	Avg.			
Hardt	31	1288	41.5			
SCORING						
	TD's	X.Pts.		FG's	Pts.	
		K	P	R		
Bowens, HB	2	0	0	0	12	
Jones, KS	0	2	0	0	3	

#### AUBURN LEADERS

RUSHING						
	Carries	Gain	Avg.	TD's		
Sullivan, QB	10	73	7.3	1		
Clark, FB	19	72	2.8	1		
PASSING						
	Att.	Comp.	Pct.	Int.	Yds.	TD's
Sullivan	55	32	58.2	2	509	4
RECEIVING						
	Caught	Yards	TD's			
Beasley, SE	9	197	3			
Schmalz, WB	6	96	1			
PUNTING						
	Punts	Yards	Avg.			
Beverly	11	450	40.9			
SCORING						
	TD's		Pts.			
Beasley	2		18			

Statistically Dawahare's, like the Wildcats, ranks high on every list.

# The only college plan that's rated 'm'.

"M" for mature.

Many good life insurance and savings plans are being offered today to college seniors and graduate students, but one stands head and shoulders above the others. It's Kentucky Central Life Insurance Company's University Key Plan.

Here is the best-conceived, most mature solution to the unique life insurance needs of college people. Here is the plan with broader protection that looks realistically to the college graduate's future needs and his increased financial and familial responsibilities.

Here, too, is the plan that takes into consideration the average college student's present modest income and enables him to defer his first-year premium until his business or professional career is well launched.

And, incidentally, don't worry about military exclusions. There aren't any.

This is the mature college life insurance plan, represented only by mature, college-bred life insurance agents and general agents.

Kentucky Central's University Key Plan — the only college life insurance plan rated "M".

Your Kentucky Central representative on campus will be glad to tell you all about it.



National Headquarters  
Lexington, Ky. 40507

## HENRY HAYS, GENERAL AGENT

503 Euclid Avenue

Representing Kentucky Central's University Key Division

Phone 255-9678

# PURCELL'S

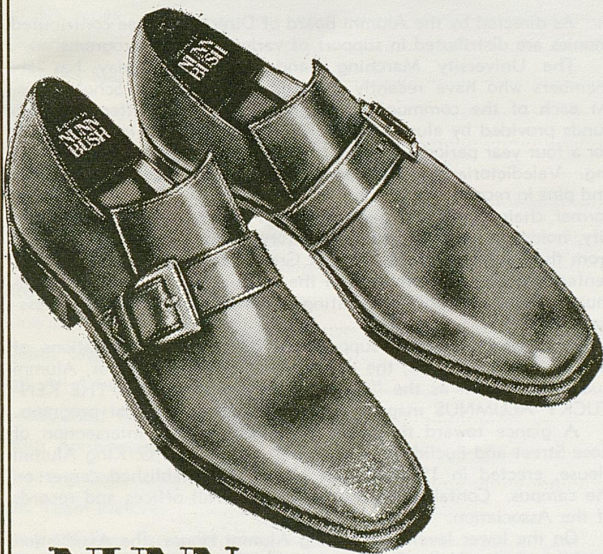
... Is where it's at in Campus  
Fashions — 1970 Style!

## The man is you The shirt McGregor®

The shirt is the Brooke, Scotset® permanent press oxford cloth with lots of shape. High collar with long low points. Double button cuffs, and smart fashion colors in sizes Small, Medium and Large.

- WINE
- BLUE
- GREEN
- GOLD
- BRASS

\$6.50



**NUNN  
BUSH**

*Buckle  
Style Shown*

\$21.95

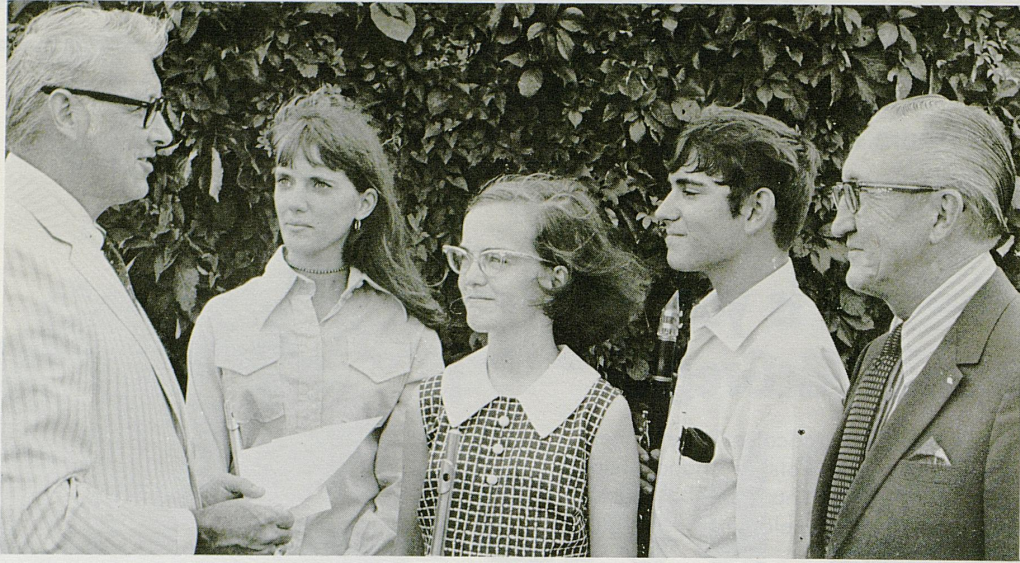
### NEW BROGUE LOOK FOR CAMPUS

NUNN-BUSH one of the finest names in men's footwear offers this fine collection with the look of much higher priced shoes.

OTHER NUNN-BUSH  
styles from which  
to choose  
from \$19.25 to \$38.95

# PURCELL'S

SHOE CENTER — MAIN FLOOR



**SCHOLARSHIP PROGRAM**—In its attempt to aid all areas of the University, the Alumni Association this year inaugurated an alumni-funded scholarship program for members of the University of Kentucky Marching Band. Director of Alumni Affairs Jay Brumfield (left) and 1970 Fund Drive chairman J. Paul Nickell flank Mary Lou Frank, Corydon, Ind., Jean Hutchinson, Warrenville, Ill., and Richard Summers, Wheeling, W. Va., three of the six recipients of the \$500 grants.

## ALUMNI ASSOCIATION: A TRUE FRIEND

Homecoming, 1970, as with previous homecomings, is a time of remembrance. A time to reflect on days past and prognosticate on days ahead.

For alumni, of this or any other institution, homecoming is visiting the "old school" whether for the first time or the 50th time. Some have left never to return. Others return and serve the University as educators or administrators. All never really leave. All retain some memory; friends made, professors loved (or loathed), shenanigans shared. All arrived to learn and departed to serve, and all who fulfilled desires become alumni.

So it was in June of 1889. Sixteen who would soon become graduates of Kentucky State College assembled, at the urging of President James K. Patterson, to organize the Association of State College Alumni. There were 56 known graduates at that time and the new organization pledged itself to the strengthening of the bonds of friendship among these graduates.

From that meager beginning, the University of Kentucky Alumni Association has grown into an important and functional part of the University community. As Association President Joe Creason told the 1970 graduating class: "Contrary to what some seem to think, our alumni association—now your alumni association—is not a branch country club comprised of . . . rah-rah types who sadly wag our heads and mutter, 'What are college kids coming to these days?'"

"Basically, the function of your alumni association is in doing what we can to make this university the quality institution Kentucky and the nation deserves and needs. To that end, your association, . . . carries on . . . functions which the University itself might not be able to underwrite."

In 1889, the treasury of the Association of State College Alumni showed a balance of \$14.70. In 1970, fund drive chairman J. Paul Nickell ('32) reported direct contributions to the Association of over \$107,700. In addition, alumni gave over \$29,500 in gifts restricted for academic departments or special projects, and another \$94,300 directly to the University and its community colleges. The total contributed, \$231,500 from 7,580 alumni, represented a 47.5 per cent increase over the previous year. The basic goal of the giving program in 1971 is \$200,000 from 10,000 alumni.

As directed by the Alumni Board of Directors, these contributed monies are distributed in support of various Alumni programs.

The University Marching Band performing today has six members who have recently received \$500 Alumni Scholarships. At each of the community colleges, students are attending with funds provided by alumni. Alumni Loyalty Scholarships of \$2,800 for a four year period are given to students of high academic standing. Valedictorians at Kentucky high schools receive certificates and pins in recognition of their achievements. Dr. Charles P. Roland, former chairman of the Department of History at Tulane University, holds the Alumni Chair of History, funded by a \$33,000 gift from the Alumni Association. Six Great Teaching Awards are presented annually to professors on the main campus and in the community colleges who have distinguished themselves in the classroom.

And the Association supports its own, with presentations of Alumni Service Awards, the development of Alumni Clubs, Alumni publications such as the "Open Door" newsletter and THE KENTUCKY ALUMNUS magazine, and University regional programs.

A glance toward the southeast corner of the intersection of Rose Street and Euclid Avenue will find the Helen G. King Alumni House, erected in 1963 to give alumni an established center on the campus. Contained in the building are all offices and records of the Association.

On the lower level of the King Alumni House, the Association established the Hall of Distinguished Alumni. At present, 127 graduates who through their achievements have brought honor to the University, are themselves honored. On Nov. 6 a banquet in the UK Student Center will acknowledge 19 alumni chosen this year for inclusion in that select group.

Again Mr. Creason: "These are nervous, trying times when the University needs for its friends to stand up and be counted as never before. Not necessarily status quo friends who abhor change, but honest-to-God, true friends who have the courage of their convictions, who believe it isn't necessary to destroy in order to improve, and who believe the University has a role to play as an institution where free exchange of ideas is an integral part of the educational process."

The Alumni Association is such a friend.

## OFFICIAL UK FOOTBALL PROGRAM

Kentucky vs. Auburn — October 3, 1970

UK Football Program: Official University of Kentucky football magazine; Mailing address—Memorial Coliseum, Lexington, Ky. 40506.

Editorial Staff: Russell Rice, editor; Ed Swift and Ellsworth Taylor, advisors; Jack Perry, Asst. SID.

Photographers: Jim Laughead, John Mitchell, Harold Melton, Ken Goad.

OUR COVER: Posed prettily with the 1951 Sugar Bowl trophy are Patricia and Priscilla Barnstable of Louisville, cheerleaders for the 1970 Wildcats and daughters of K-Basketball letterman Dale Barnstable. Today's homecoming activities are built around the 20th anniversary of the 1950 Wildcat Sugar Bowl team and the 1950-51 NCAA champion basketball team.

### CONTENTS

	Page
Statistically Speaking .....	1
Scholarship Program .....	4
Index To Advertisers .....	5
Governor Nunn .....	7
Queen Candidates .....	8
President's Message .....	9
Athletic Director Lancaster .....	11
NCAA Series .....	12
Cheerleaders .....	13
Athletics Staff .....	15
Coach Ray .....	16
Frank Ham .....	17
Scouting Report .....	17
Coaching Staff .....	19
Auburn Pictures .....	20-21
UK Football Records .....	22-23
Rosters .....	24
Lineups .....	26-27
Depth Chart .....	29
UK All-Americans .....	31
1,000-Yard Performers .....	31
20th Anniversary .....	32-33
Training Staff .....	33
UK Team Pictures .....	34-35-36
How UK Foes Faring .....	37
Athletics at UK .....	38
Chicago .....	40
UK Band .....	41
UK's Community College System .....	44-45
Wildcat Booster Pages .....	46-47
K-Men's Association .....	48
Football Signees .....	49
Wildcat Print .....	49
Officials' Signals .....	51
Kentucky Basketball .....	52

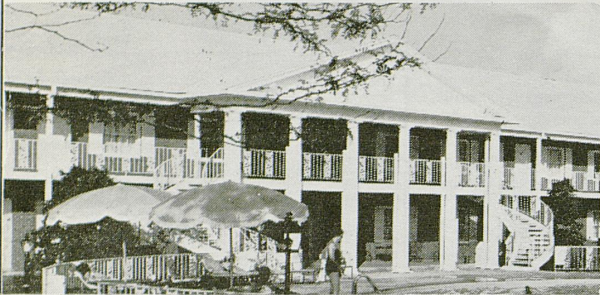
### INDEX TO ADVERTISERS

All-American Tours .....	37
American Businessmen's Life .....	43
Ashland Oil .....	18
Ben Snyder .....	19
Carey-Adams .....	37
Carpenter-Warren .....	22
Central Bank .....	28
Chevrolet .....	Back Cover
Coca-Cola .....	Center Spread
Committee of 101 .....	52
Continental Travel Agency .....	19
Dawahare's .....	1
DeBoor Laundry .....	23
Downtowner .....	42
First Security .....	10
Frisch .....	38
Graves-Cox .....	Inside Front
Howard Johnson .....	14
Imperial House .....	6
Irelands .....	15
Jerry's .....	25
Kennedy's .....	14
Kentucky Central .....	2
Kentucky Utilities .....	31
Lexington Transit Co. ....	23
Lexington Yellow Cab .....	14
Little Inn .....	31
Magna-Graphic .....	42
Marathon Oil .....	42
McAlpins .....	18
Pancake House .....	43
Phoenix Hotel .....	39
Ponderosa Steak House .....	47
Purcell's .....	3
Ray Show .....	50
Second National Bank .....	39
Sleepy-Head House .....	50
Southland Sports Shop .....	38
Stewart's .....	15
Tinder-Krauss-Tinder .....	22
University Book Store .....	10
Wenneker's .....	6
WHAS .....	Inside Back Cover
Wildcat Network .....	30
WLEX .....	39
WVLC .....	30
Yellow Cab .....	56

The

RAMADA

Imperial



*"Luxury for Less"*

Phone 254-1177  
325 Waller Ave.

*Lexington's Most Elegant Motel*

*Is Very Proud to*

BE ASSOCIATED WITH  
OUR GREAT KENTUCKY UNIVERSITY

Mr. Jack Dunn, General Manager and graduate (1966) of the University, along with his complete staff want to do everything in their power to provide excellent service to the University at all times.

Also Visit The All New EMPIRE DINING ROOM

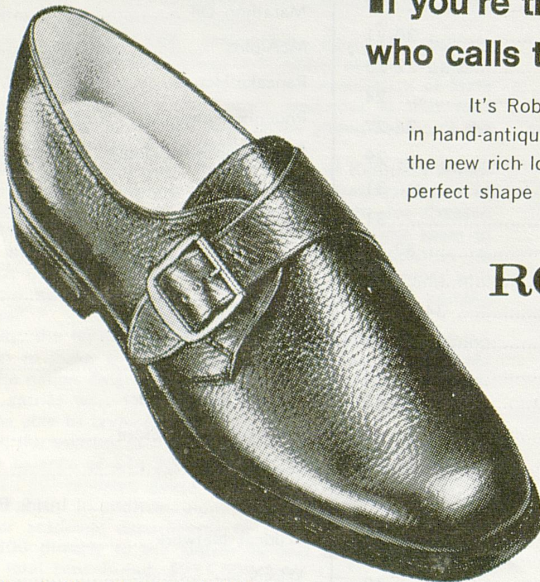
Gourmet foods and rare wine are served in continental elegance under the personal supervision of J. H. Camara, chef renown.

- Cocktail Lounge
- Dancing Nightly
- Two Dining Rooms
- Swimming Pool and Patio

CALL RON WILSON, DIRECTOR OF SALES  
FOR BANQUET AND MEETING PLANNING

**If you're the man  
who calls the shots**

It's Roblee's fashion-right shoe made in hand-antiqued leathers. It not only boasts the new rich looking finish, but also has the perfect shape for traditional clothes.



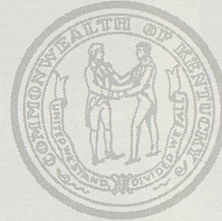
**ROBLEE.**

wenneker's

In Louisville - Oxmoor Mall Center

In Lexington - 153 E. Main & Turfland Mall





**the honorable**  
**LOUIE B. NUNN**  
Governor of Kentucky

## **Governor Boosts Wildcat Gridders . . .**

Louie B. Nunn, an architect of impressive changes and progress since his inauguration as the 56th Governor of Kentucky, believes strongly that self-reliance, pride and courage are the by-products of intercollegiate athletics.

Chairman of the Board of Trustees at the University of Kentucky, Governor Nunn leads Kentuckians in support of a football program to match the dramatic recent progress which has touched every part of the UK community.

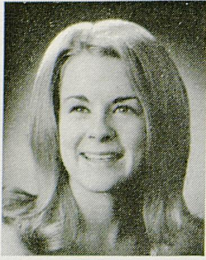
An avid sportsman and spectator, the Governor's scarce moments of relaxation during the Fall are divided among hunting, fishing and football.

Governor Nunn's deep concern for education was reflected in his budget, which contained record appropriations for every level from grade school to vocational schools, colleges and universities.

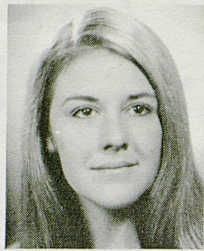
Governor Nunn, 46, is a native of Barren County. He attended Bowling Green Business University, the University of Cincinnati and the University of Louisville, where he earned a law degree in 1950.

A successful attorney, Governor Nunn has served in both executive and judicial positions. The third Republican this century to be elected Governor of Kentucky, he formerly served as a county judge and city attorney.

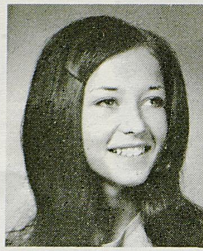
## *Homecoming Queen Candidates*



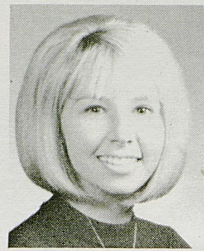
Donna Ann Baker  
*Kappa Delta Sorority*



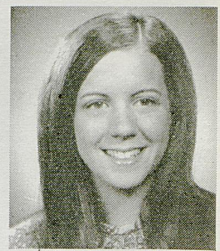
Bell Bassett  
*Delta Delta Delta*



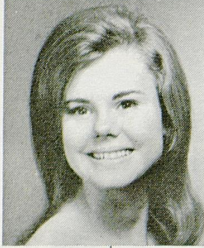
Gretchen Portwood  
*Delta Gamma Sorority*



Carolyn Workman  
*Delta Zeta*



Pam Hinkel  
*Alpha Tau Omega*



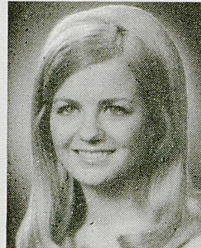
Janet Gail Reinhart  
*Alpha Epsilon Pi*



Terry Costanzo  
*Gamma Phi Beta*



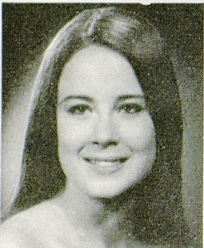
Fran Owen  
*Holmes Hall*



Susan E. Perkins  
*Alpha Gamma Delta*



Mary Cortright  
*Sigma Chi Fraternity*



Elizabeth Hayes  
*Alpha Chi Omega*



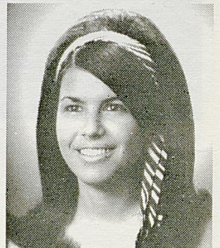
Sandy Camic  
*Alpha Delta Pi*



Karleen Warren  
*Black Student Union*



Theresa Resig  
*Chi Omega*



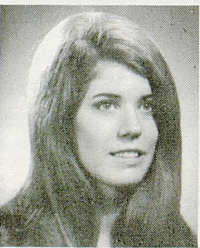
Judy Alexander  
*Pi Beta Phi*



Carol Tweeddale  
*Pi Kappa Alpha*



Karen Prising  
*Zeta Tau Alpha*



Betsy Welch  
*Phi Kappa Tau*



Norma Shamieh  
*Cosmopolitan Club*



Susan Saalfeld  
*Kappa Kappa Gamma*



Patty Bellew  
*Delta Tau Delta*

### PICTURES NOT AVAILABLE

Jill Casey  
*Sigma Alpha Epsilon Fraternity*

Terry Miller  
*Kappa Alpha Theta*

Charlene Hobbs  
*Hamilton House*

Kathy Price  
*Blanding Tower*

Freida Nichols  
*Keeneland Hall*

Sarah S. McConnell  
*Alpha Xi Delta*



### *President's Letter*

Colleges and universities everywhere have undergone sweeping change in recent years. One thing generally unchanged, however, is the nostalgia of Homecoming. It is felt as keenly, I believe, by those of us who have remained on campus as by you who are here infrequently. I speak not just for myself, therefore, but for all of U.K.'s student body, faculty and staff in expressing the wish that today's Homecoming will be an especially pleasant one for all of the visiting alumni and friends who are with us today.

Most of the changes experienced at U.K. in recent years have been for the better. Many of these will be evident as you stroll across campus—extensive physical growth, an array of new facilities, and many more people utilizing them. Other changes are not so apparent but are of equal if not greater importance. Such change, it may be said, involves the quality rather than the size and setting of our academic programs.

But none of the improvements, visible or not, would have been possible without the understanding support of Kentuckians and of many alumni and friends now far removed from Kentucky. We who are charged with the guidance of the University are deeply grateful for this support, and pledge our best effort to keep U.K. firmly on its upward course.

Sincerely,

*O. A. Singletary*

Otis A. Singletary

UNIVERSITY  
BOOK STORE  
• STUDENT CENTER •

HEADQUARTERS FOR ALL YOUR COLLEGE NEEDS

NEW and USED TEXT BOOKS

ENGINEERING and ART SUPPLIES

U of K T-SHIRTS, SWEATSHIRTS, SWEATERS, JACKETS  
U of K STATIONERY, MUGS, GLASSES, SOUVENIRS



*the bank that helps you  
get things done*

EIGHT FULL-SERVICE  
LOCATIONS IN LEXINGTON



FIRST SECURITY  
NATIONAL BANK AND TRUST COMPANY



**Athletic Director**  
**HARRY C. LANCASTER**



The University of Kentucky athletic program, with Harry C. Lancaster beginning his second year as director, looks forward to an era of exciting progress. Since the former assistant basketball coach took over as acting athletic director in September 1968 and permanent director three months later, the Wildcat ship of state has sailed smoothly. One interruption was an extended hospital stay for Mr. Lancaster during the spring of 1970, but he bounced back in a courageous manner and resumed full-time duty in mid-summer.

One of the first challenges facing Lancaster during his "acting" tenure was selection of a football coach. He and a screening committee worked hard to come up with unanimous choice John Ray.

Lancaster also has applied his energies in other areas, beefing up the spring sports program by re-surfacing the running track and adding bleachers, hiring young Ron Huebner as swim coach and Dick

Parsons as baseball coach. The Coliseum has received a new roof and the several improvements have been made to various areas of the football stadium.

A native of Paris, Ky., Lancaster lettered in football, basketball and baseball under Blanton Collier at Paris High. At Georgetown College, he was an all-conference halfback three straight years and two-time captain of both the football and basketball teams. He served as assistant football and basketball coach at Georgetown (1932-33) and Paris High (1933-34), head basketball coach at Bagdad High (1934-36), principal and coach at Gleneyrie High (1936-42) and physical education instructor at UK in 1942. He joined Adolph Rupp's staff as a part-time assistant after being discharged from the Navy in 1946 and was made a full assistant by Rupp in 1948. He was UK baseball coach 17 seasons before relinquishing that post after the 1965 campaign.

# AN OPEN LETTER TO YOUTH

## ... from an Olympic Athlete

*(Cliff Cushman, a member of the 1960 U.S. Olympic team and a University of Kansas all-time track great, suffered a stunning disappointment at the 1964 U.S. Olympic Trials. Having finished second in the 400 meter hurdles in 1960 at Rome, he was a top candidate for a gold medal in 1964. But he hit and tripped over a hurdle in the Trials and fell to the track, eliminated from the competition and the Games. When messages of sympathy poured in, Cushman replied with a stirring open letter to the youth of his home town, Grand Forks, N. Dak. In the fall of 1966, Captain Cliff Cushman, USAF, was shot down over Viet Nam and is now listed as missing in action. EDITOR)*

**Don't feel sorry for me. I feel sorry for some of you!**

You may have seen the U.S. Olympic Trials on television September 13. If so, you watched me hit the fifth hurdle, fall and lie on the track in an inglorious heap of skinned elbows, bruised hips, torn knees, and injured pride, unsuccessful in my attempt to make the Olympic team for the second time. In a split second all the many years of training, pain, sweat, blisters and agony of running were simply and irrevocably wiped out.

**But I tried! I would much rather fail knowing I had put forth an honest effort than never to have tried at all.**

This is not to say that everyone is capable of making the Olympic Team. However, each of you is capable of trying to make your own personal "Olympic Team," whether it be the high school football team, the glee club, the honor roll, or whatever your goal may be. Unless your reach exceeds your grasp, how can you be sure what you can attain? And don't you think there are things better than cigarettes, hot-rod cars, school dropouts, excessive make-up, and duck-tail grease-cuts?

Over 15 years ago I saw a star—first place in the Olympic Games. I literally started to run after it. In 1960 I came within three yards of grabbing it; this year I stumbled, fell and watched it recede four more years away. Certainly, I was very disappointed in falling flat on my face. However, there is nothing I can do about it now but get up, pick the cinders from my wounds, and take one more step followed by one more and one more, until the steps turn into miles and the miles into success.

I know I may never make it. The odds are against me but I have something in my favor—desire and faith. Romans 5:3-5 has always had an inspirational meaning to me in this regard. "... we rejoice in our sufferings, knowing that suffering produces endurance, and endurance produces character, and character produces hope, and hope does not disappoint us . . ." At least I am going to try.

### **How About You?**

How about you? Would a little extra effort on your part bring up your grade average? Would you have a better chance to make the football team if you stayed an extra 15 minutes after practice and worked on your blocking?

Let me tell you something about yourselves. You are taller and heavier than any past generation in this country. You are spending more money, enjoying more freedom, and driving more cars than ever before, yet many of you are very unhappy. Some of you have never known the satisfaction of doing your best in sports, the joy of excelling in class, the wonderful feeling of completing a job, any job, and looking back on it knowing that you have done your best.

I dare you to have your hair cut and not wilt under the comments of your so-called friends. I dare you to clean up your language. I dare you to honor your mother and father. I dare you to go to church without having to be compelled to go by your parents. I dare you to unselfishly help someone less fortunate than yourself and enjoy the wonderful feeling that goes with it.

**I dare you to become physically fit. I dare you to read a book that is not required in school. I dare you to look up at the stars, not down at the mud, and set your sights on one of them that, up to now, you thought was unattainable. There is plenty of room at the top, but no room for anyone to sit down.**

Who knows? You may be surprised at what you can achieve with sincere effort. So get up, pick the cinders out of your wounds and take one more step.

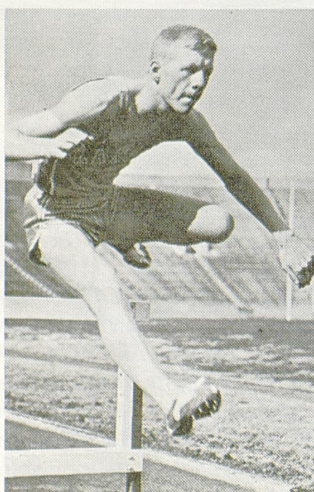
**I dare you!**

Sincerely,

CLIFTON E. CUSHMAN



CLIFF CUSHMAN  
As an Olympian

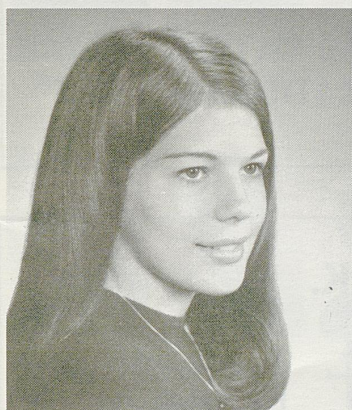


CLIFF CUSHMAN  
As a Kansas Hurdler

## MEET THE CHEERLEADERS



Name: Jill Patricia Casey  
 Parents: Mr. and Mrs. James Patrick Casey of Pompano Beach, Florida.  
 High School: Northeast. Cheerleader for 3 years. Captain for 1 year. Homecoming queen. American Cheerleader Association Badge.  
 College: Attended Jacksonville University as a freshman—was a cheerleader there. University of Kentucky—Member of Kappa Alpha Theta Sorority (song leader, assistant pledge trainer). First runner-up for Sigma Chi Derby Queen. Won talent award in Miss U.K. contest. Hobbies: writing, poetry, singing, dancing, and gymnastics.  
 Status: Junior, in Speech and Hearing.



Name: Nancy Downes  
 Parents: Mrs. Evelyn V. Downes of Cincinnati.  
 High School: Cheerleader, Homecoming Queen, Senior Class Secretary, National Honor Society, Girl Athletic Association, Concert and Marching Band, Girl Scout.  
 College: Gymnastics Team, Alpha Delta Pi.  
 Status: Sophomore, in Home Economics.



Priscilla Barnstable



Patricia Barnstable

The "cover girls" on today's program are Patricia and Priscilla Barnstable, daughters of Mr. and Mrs. Dale Barnstable of Louisville.

Both are graduates of Seneca High School, where they were J.V. and varsity cheerleaders.

"Tricia" was Junior Miss second runner-up, Miss Teenage Louisville finalist and a three-year Calendar Girl. "Cyb" was also a calendar.

At UK, both girls are members of Angel Flight, Pi Beta Phi sorority and the Honor Roll. Both list modeling and dancing as hobbies, and both are English majors. Cyb is a sophomore, Tricia a freshman.

**HOWARD JOHNSON'S**  
**Motor Lodge**



Nicholasville Road, U.S. 27, South  
Phone 277-1191, Lexington, Kentucky

LANDMARK FOR SLEEPY AMERICANS

# Lexington Yellow Cab Co.

Inc.

ALL  
RADIO CABS

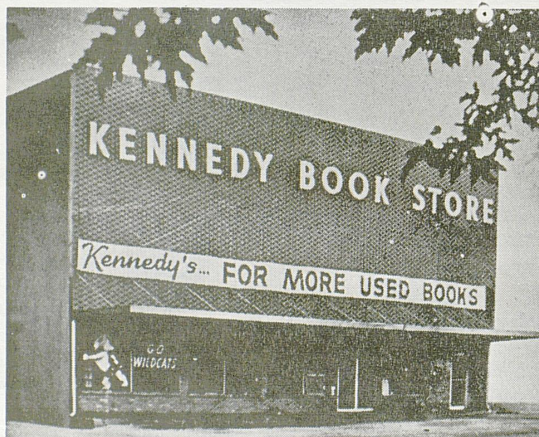
**Dial 252-2231**

ALL  
RADIO CABS

## THE NO. 1 BOOKSTORE AT U.K.

21 Years  
Serving  
U.K.

—●—  
Textbooks  
and  
Supplies



UK Shirts  
UK Pennants  
UK Decals  
UK Souvenirs  
Records

# KENNEDY BOOK STORE

405 S. LIMESTONE

ACROSS FROM STUDENT CENTER



WILDCAT HEAD COACHES  
AND ATHLETICS STAFF



CLAUDE BRUNER  
Fields Supt.



CARL EPSIN  
FB Equip. Mgr.



LOUISE GILCHRIST  
Asst. to Director



H. S. HODGES  
Ticket Manager



RON HUEBNER  
Swimming



DICK PARSONS  
Baseball



AL MORGAN  
Student Admissions



JACK PERRY  
Assistant SID



MAJ. DAVID PHILLIPS  
Rifle



RUSSELL RICE  
Information Dir.



JANE ROLLINS  
Basketball Secretary



ADOLPH RUPP  
Basketball



KATHY SCHULER  
FB Staff Asst.



JAN SMITS  
Accountant



JIM STUBBLEFIELD  
FB Tutorial Advisor



C. E. UNDERWOOD  
Co-ordinator



CLAUDE VAUGHAN  
Basketball Trainer



RICHARD VIMONT  
Tennis



PRESS WHELAN  
Track



HUMZEY YESSIN  
Golf

# Ireland's

## RESTURANT

FEATURING  
WORLD FAMOUS

# Stake an' Biskits

Tender morsels of choice steak  
tucked into hot buttery biscuits  
and heaped with Irish Skerry  
fries.

**270 Southland Drive**  
**ENTERTAINMENT**  
OPEN MON. THRU SAT.  
11 A.M. — 1 A.M.  
SUNDAYS 11 A.M. — 9 P.M.

OTHER IRELAND'S LOCATIONS

NASHVILLE, TENN. 204 21st Ave. So.	TUSCALOOSA, ALA. 823 Hargrove Rd.
ATHENS, GEORGIA 1053-A Baxter Ave.	MEMPHIS, TENN. 670 Jefferson Ave.

ALL MENU ITEMS PREPARED FOR CARRY-OUT

THERE IS SO MUCH MORE FOR YOU AT STEWART'S - MAIN ST.

- *Kentucky's Favorite  
Department Store*
- *380 car Parking  
Garage adjoining*
- *Open Mondays and  
Fridays 'til 9*

130 East Main Street



### Head Football Coach

### JOHN RAY

John Ray, now in his second year as football coach at the University of Kentucky, has become one of the Commonwealth's better-known citizens. His doctrine and philosophy have been spread throughout the state by personal appearances in hamlets and crossroad communities as well as metropolitan areas.

He shocked the football world early in his first season at Kentucky by engineering a 10-9 upset over powerful Ole Miss, but a few glaring weaknesses—notably lack of speed, blocking in the offensive line, and the kicking game—killed Wildcat hopes for a winning season.

A native of South Bend, Ray graduated from South Bend High in June 1944 and was regular center three months later at Notre Dame. After a tour with the Paratroopers, he returned to Notre Dame for spring practice in 1947 and transferred to Olivet College, Mich., where he played three seasons and was a stu-

dent assistant on the coaching staff of Frank Ham.

Ray received his bachelor's degree in history and then coached at Sturgis and Three Rivers in Michigan before serving four years as an assistant at Detroit. From 1959-63, he was head coach at John Carroll, where he masterminded a very successful program (29 wins and six losses) and set several national records in defense. He left John Carroll in 1964 to become chief defensive assistant to Ara Parseghian, who had moved from Northwestern to Notre Dame. He later was named assistant head coach of the Irish.

A member of the Catholic Church, Ray received his Master's Degree in educational guidance from the University of Michigan. He is married to the former Barbara Fuller of Muncie, Ind. They have four children: Jeff (born in 1954), Kathy (1956), Debra (1958) and Chris (1960).

## SCOUTING REPORT

The University of Kentucky will face the third outstanding quarterback in as many weeks when Auburn's Pat Sullivan leads Coach Ralph Jordan's Tigers onto Stoll Field this afternoon.

The Wildcats of John Ray put the halter on Kansas State's Lynn Dickey in a 16-3 upset of the Purple Pride two weeks ago and then shackled Archie Manning in a 20-17 losing effort at Jackson last Saturday. Both Dickey and Manning are being heralded as Heisman Trophy candidates.

Sullivan didn't get much pre-season fanfare, but the junior from Birmingham is changing that in a hurry. He was named Southeast offensive player of the week after the Plainsmen opened with an impressive victory over Southern Mississippi Sept. 19. Sul-

livan added more stature last Saturday, when he gained more than 300 yards while leading the Tigers to a 36-23 victory over Tennessee. Against the Vols, he completed 17 of 31 passes for 268 yards and ran for 33 more. The previous week, he passed for 241 yards and three touchdowns and ran in another TD.

Sullivan's favorite target is Terry Beasley, who has nine catches for 197 yards and three touchdowns already this season. Wallace Clark, a proven fullback, has gained 72 yards on 19 carries, second to Sullivan's 73 yards on 10 carries.

The Tigers treated the Wildcats rather badly last year, winning by 44-3 their 12th game in the 18-game series (one ended in a tie) which began in 1934.

### ADDITIONAL BOOSTERS

**Harlan:**

Mr. & Mrs. Eugene C. Hopkins  
Mr. Emory Allen Hopkins

**Lebanon:**

Wayland and Dorothy Harrell

**Lexington:**

J. S. Kennoy  
Mr. & Mrs. H. J. (Jack) Hagler  
Bill and Mary Ellen Reed

**Owensboro:**

John A. Moore

**Paducah:**

Stacey's Restaurant

**Pineville:**

Mr. and Mrs. Bill Morgan  
Mr. and Mrs. L. G. Swafford

**Prestonsburg:**

Barkley Sturgill

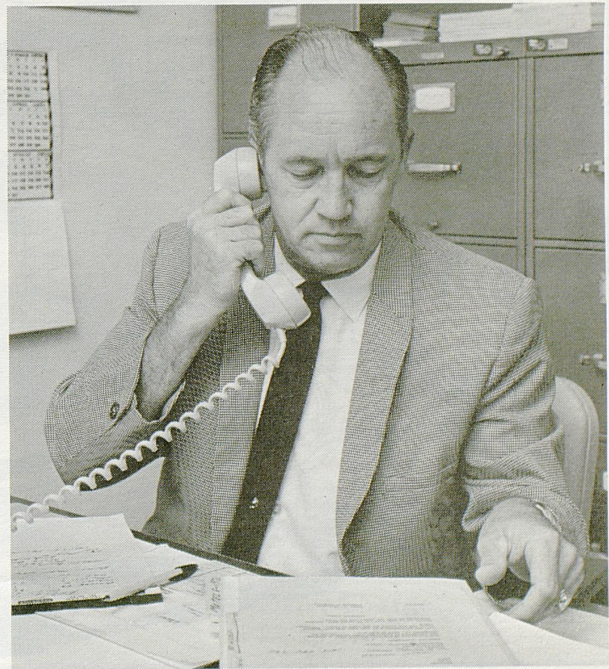
**Louisville:**

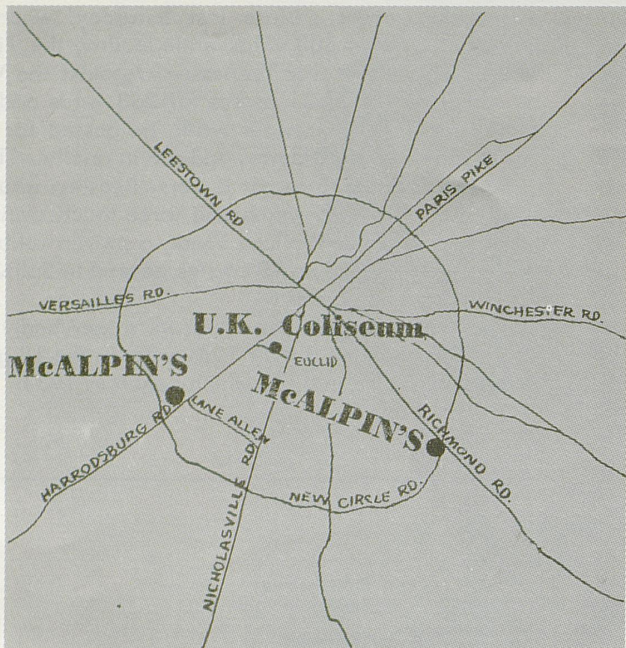
Mr. and Mrs. Paxson King III

**Springfield, Ohio:**

Howard F. Wunderlich

**RIGHT HAND MAN**—A busy man is Frank Ham, who as administrative assistant to Coach John Ray serves as a buffer and liaison for the Wildcat head football coach. Many, many varied duties are the lot of Ham, who brought to Kentucky a fine record as a coach and administrator. He began his coaching career as an assistant at John Adams High School in South Bend, Ind., where Ray was a member of the squad. Ham later coached Ray at Olivet College in Michigan. After coaching football and track at John Adams in 1941-43, Ham was football and basketball coach at Niles, Mich., High School in 1944-46 before returning to Olivet, his alma mater, as athletic Director and football and basketball coach. He gave up duties as athletic director in 1952 to become assistant to the president. He was in the automobile business from 1954 until coming with Ray to Kentucky.





## SOON WE WILL BE TWO!

The people of Central Kentucky have teamed together in an overwhelming acceptance of McAlpin's . . . this unbeatable team will soon have a second McAlpin's.

In addition to our Turfland Mall location (Harrodsburg Road), a big, beautiful new store is to be located in the Lexington Mall (New Circle and Richmond Road). Watch for the opening, October 1971.

*McAlpin's*



## And away you go!

The Ashland sign is your assurance of top-quality products and expert service to keep your car running well. Ashland service is prompt, friendly—always.

To get the most out of your car, make it a habit to stop at the Ashland sign. It's the dependable way to go!



## ASSISTANT COACHES



### DAVE ADOLPH (Linebackers)

Graduate of University of Akron, 1959  
Team Captain, two years  
All-Ohio, All-Air Force  
1 year Shaw High, 2 years Akron,,  
5 years University of Connecticut



### RON CAIN (Receivers)

Graduate University of Kentucky, 1960  
3 letters, All-Academic, UK  
Assistant Waggener High 1961  
Seneca High, 1962-69 (57-13-1)  
Coach of the Year (AAA) 1966



### WHITEY CAMPBELL (Defensive Backs)

Graduate University of Miami  
Hon. Mention, All-America, team captain  
Defensive backs 5 years, Jackson High  
Freshmen, Miami 2 years  
Defense three years, Montana  
Naval Academy, 2 years



### DENNIS FITZGERALD (Defensive Line)

MVP at University of Michigan (Class '62)  
Team Captain in wrestling  
Pan American (wrestling)  
Michigan Freshmen 1963-65  
Defensive Line, Michigan, 1965-68



### JOE HAERING (Offensive Backs)

All-Conference at Bucknell  
Linebacker coach, Bucknell '65  
Basketball, boxing, Ft. Eustis, Va., 1 year  
Linebacker coach, Bucknell '68  
Graduate Assistant, UK, '69



### CARROLL HUNTRESS (Freshmen)

All-America in lacrosse, U. New Hampshire  
Also football, track star  
1 year coach Mechanic Falls High  
10 years Portland (Maine) High  
Assistant, Maryland, 1960-64  
Coach Bucknell, 4 years



### JIM POYNTER (Offensive Line)

All-America blocking back at UK '60  
2 years Glasgow High coach (12-8)  
2 years Clark County High (12-2-1)  
Undeafated Henry Clay High (11-0) 1965  
Joined University of Kentucky 1965



### GEORGE SEFCIK (Quarterbacks-backs)

All-Sports at Benedictine High, Cleveland  
Football, baseball letterman at Notre Dame  
Assistant Notre Dame HS, Niles, Ill.  
Notre Dame staff 1964  
Came to UK with John Ray 1969



## Continental TRAVEL AGENCY INC.

EXPERT  
TRAVEL  
ARRANGEMENTS  
FOREIGN & DOMESTIC

- AIRLINE RESERVATIONS & TICKETS
- ESCORTED OR INDEPENDENT TOURS
- STEAMSHIP RESERVATIONS & TICKETS
- CRUISES • EURAIL PASSES
- HOTEL & RENT-A-CAR RESERVATIONS
- VISAS & TOURIST CARDS

**NO EXTRA CHARGE**

MAJOR CREDIT CARDS WELCOME

Open Mon. - Fri. 9 A.M. - 5 P.M.,  
Sat. until Noon

**278-8461**

TURFLAND MALL - LEXINGTON, KY.

You Can Always  
Do Better At

# Ben Snyder's

Just Say: "Charge It!"

- Ben Snyder Charge
- BankAmericard
- Master Charge

# TIGERS



Mike Neel—LB



Dave Beck—DB



Gene Walker—LB



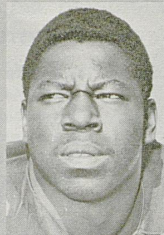
Dr. Harry Philpott—President



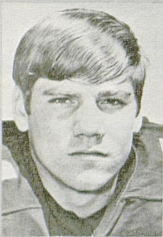
Jeff Beard—Athletic Director



Johnny Simmons—DB



James Owens—DB-TB



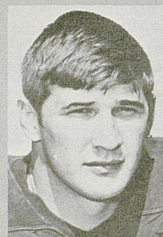
Vince Rus—C-G



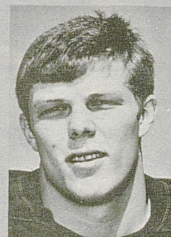
Harry Unger—TB



Larry Hill—G



Danny Sanspree—T



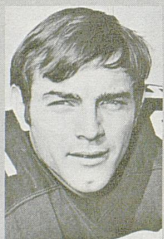
Dick Schmalz—SE



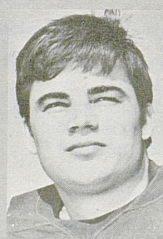
Marrell Jerkins—LB



Phillip Gilchrist—DB



Wallace Clark—FB



Mickey Zofko—TB



Terry Page—TB



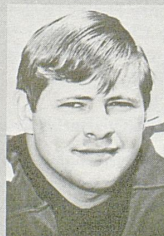
Hal Hamrick—T



Don Bristow—T



Roger Pruett—K



Pete Pummer—DT



John Valentine—G

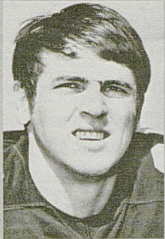
# TIGERS



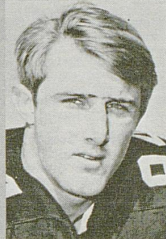
Larry Willingham—DB



Robby Robinett—TE



Terry Henley—TB



Neal Dettmering—DE



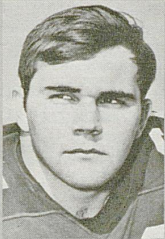
Ralph Jordan—Head Football Coach



Pat Sullivan—QB



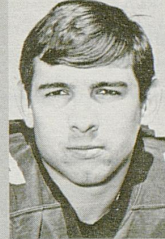
Danny Speigner—E



John McDonald—G-T



Alvin Bresler—WB



Keith Green—DE



Mac Lorendo—C-T



Tommy Traylor—QB



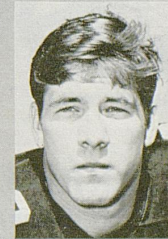
Tommy Yearout—LB-T



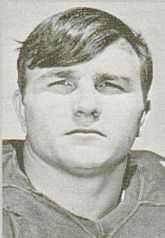
Jimmy Speigner—LB



Tommy Lowry—FB



Bob Brown—DE



Bill McManus—C



Bobby Strickland—LB



Bobby Woodruff—LB



Ronnie Ross—T



Terry Beasley—SE



145 N. UPPER STREET  
1220 HARRODSBURG ROAD  
ZANDALE PLAZA  
HEARING AID CENTER  
177 N. Upper Street



MILLER WELCH



DONALD ROSE

**CARPENTER-WARREN**  
INSURANCE AGENCY  
Since 1927

137 N. Upper St. PHONE 252-6691 Lexington, Ky.

**ALL FORMS  
OF INSURANCE**



STANLEY DOERTING



## KENTUCKY FOOTBALL RECORDS (Regular Season Only)

### TEAM RECORDS

#### TEAM TOTAL \*OFFENSE—Season

Most Plays—815 (556 runs, 259 passes in 11 games, 1951)  
Most Net Yards—4082 (11 games, 1950)  
Highest Per Game Average—371.0 (11 games, 1950)  
Most First Downs—202 (11 games, 1950)  
Most Penalties Against—79 (11 games, 1949)  
Most Yards Penalized—688 (11 games, 1949)  
Most First Downs Penalty—13 (10 games, 1964)  
Most Fumbles—56 (11 games, 1952)  
Most Fumbles Lost—29 (11 games, 1952)

#### TEAM RUSHING—Season

Most Rushing Plays—586 (11 games, 1952)  
Most Net Yards—2437 (11 games, 1952)  
Highest Per Game Average—215.2 (11 games, 1950)  
Best Average Per Rushing Play—4.7 (11 games, 1950)  
Most First Downs Rushing—136 (11 games, 1952)

#### TEAM PASSING-RECEIVING—Season

Most Passes Attempted—326 (10 games, 1969)  
Most Completions—144 (10 games, 1965)  
Most Yards Passing—1902 (10 games, 1965)  
Highest Per Game Average—190.2 (10 games, 1965)  
Highest Completion Percentage—.552 (11 games, 1951)  
Most Passes Had Intercepted—33\* (10 games, 1967)  
Most First Downs Passing—36 (10 games, 1964)  
Most Yards Return Interceptions—700† (11 games, 1949, on 28 interceptions)  
Most Touchdown Passes—27\* (11 games, 1950)  
Most Passes Intercepted For Touchdowns—6\* (11 games, 1949)

#### TEAM PUNTING-KICKOFFS—Season

Most Punts—101 (10 games, 1933)  
Most Yards On Punts—4394 (10 games, 1933)  
Highest Punting Average—43.5 (10 games, 1933)  
Most Punts Returned—48 (11 games, 1950)  
Most Yards Punts Returned—487 (10 games, 1946, on 30 returns)  
Most Kickoff Returns—43 (10 games, 1969)  
Most Yards Kickoffs Returned—768 (10 games, 1964)

#### TEAM SCORING—Season

Most Points—380 (11 games, 1950)  
(Conf. Games Only—157 in 6 games, 1950)  
Fewest Points (Modern)—91 (10 games, 1933)  
(Conf. Games Only—0 in 5 games, 1937)  
Most Touchdowns—56 (11 games, 1950)  
Most Touchdowns Rushing—30 (11 games, 1949)  
Most Touchdowns Passing—27\* (11 games, 1950)  
Most Touchdowns Int. Ret.—6\* (11 games, 28 interceptions, 1949)  
Most Extra Points, Kicking—44 (on 56 tries in 11 games, 1950)  
Most Extra Points, Passing—4 (on 10 attempts, 1965)  
Most Extra Points, Running—1 (on 1 attempt, 1964)  
Highest Per Game Point Average—34.5 (380 points, 11 games, 1950)  
Most Games Held Scoreless—6 (in 1917)

#### TEAM DEFENSE—Season

Total Defense (Per Game Average)—153.8 (11 games, 1949)  
Rushing Defense (Per Game Average)—71.6 (11 games, 1949)  
Pass Defense (Per Game Average)—47.9 (10 games, 1955)  
Fewest Points Allowed—None (Seven games, 1898)  
(Ten game season, modern—52 in 1947)  
(Conf. Games Only—6 in 5 games, 1949)  
Most Points Allowed—295 (10 games, 1969)  
(Conf. Games Only—224 in 7 games, 1969)  
Most Passes Intercepted—28 (11 games, 1949; 1950)  
Most Yards Return Int. Passes—700† (11 games, 1949, on 28 int.)  
Most Opponent Fumbles Recovered—24 (11 games, 1951)

#### TEAM TOTAL OFFENSE—Single Game

Most Plays—90 (63 rushing, 27 passing vs. Tenn. Tech, 1951)  
Most Net Yards—646 (Against Tenn. Tech, 1951)  
Most First Downs—31 (Against Tenn. Tech, 1951)  
Most First Downs Penalty—4 (Against Villanova, 1951; Houston, 1965)  
Most Penalties Against—18 (Against Ga. Tech, 1951)  
Most Penalties Against Both Teams—25 (Kentucky 10, Mississippi 15—1954)  
Most Yards Penalized—148 (Against Miami, 1959)  
Most Yards Penalized, Both Teams—305\* (Kentucky 123, Mississippi 182—1954)  
Most Fumbles—11 (Against Miss. State, 1952)  
Most Fumbles, Both Teams—16 (UK 9, Tennessee 7—1950)  
Most Fumbles Lost—6 (Against Miss. State, 1952)

#### TEAM RUSHING—Single Game

Most Rushing Plays—70 (Against Miami, Fla., 1949; Tennessee, 1953)  
Most Net Yards Gained—446 (Against Tenn. Tech, 1951)  
Fewest Yards Rushing—Minus 9 (Against Virginia Tech, 1966)  
Highest Rushing Average—9.1 (34 plays, 303 yards vs. North Dakota, 1950)  
Most First Downs Rushing—23 (Against Miami, Fla., 1949)

#### TEAM PASSING-RECEIVING—Single Game

Most Passes Attempted—46 (Against Tennessee, 1969)  
Most Completions—28 (Against Tennessee, 1969)  
Most Yards Passing—440 (Against Tennessee, 1969)  
Most Passes Had Intercepted—6 (By Louisiana State, 1965)  
Most First Downs Passing—20 (Against Tennessee, 1969)  
Fewest Passes Attempted—1 (Against Ga. Tech, 1958)  
Most Touchdown Passes—8† (Against North Dakota, 1950)

#### TEAM PUNTING-KICKOFFS—Single Game

Most Punts—16 (Against Tennessee, 1933)  
Most Yards On Punts—680 (Against Tennessee, 1933)  
Highest Punting Average—52.9 (Against Florida, 1957, on 6 punts)  
Most Punts Returned—8 (Against W. Va., 1946; Texas, 1951)  
Most Yards Punts Returned—142 (Against West Virginia, 1946)  
Most Kickoff Returns—8 (Against Florida State, 1964)  
Most Yards Kickoffs Returned—186 (Against Florida State, 1964)

#### TEAM SCORING—Single Game

Most Points—87 (Against Wilmington, 1914)  
Most Touchdowns—12 (Against North Dakota, 1950)  
Most Touchdowns, Rushing—9 (Against Tenn. Tech, 1951)  
Most Touchdowns, Passing—8† (Against North Dakota, 1950)  
Most PAT Attempted (Placement)—12 (Against North Dakota, 1950)  
Most PAT Scored (Placement)—11\* (Against North Dakota, 1950)  
Most PAT Scored, Running—1 (Against Vanderbilt, 1964)  
Most Field Goals Made—2 (Against Miss. A.&M, 1914; Mississippi, 1961)  
Last Time Held Scoreless—Oct. 25, 1969 (UK 0, Georgia 30)



## INDIVIDUAL RECORDS

### INDIVIDUAL TOTAL OFFENSE—Season

Most Plays—299 By Bernie Scruggs, 1969 (116 runs, 183 passes)  
 Most Total Yards—1706 By Rick Norton, 1965 (10 games)  
 Highest Average Gain Per Play—10.8 By Babe Parilli, 1951 (11 games)  
 Most Time Played (1955-1963)—555:55 By Lou Michaels, 1956 (10 games)  
 Most Tackles—157 By Mike McGraw, 1965 (10 games)

### INDIVIDUAL RUSHING—Season

Most Times Carried—180 By Roger Gann, 1969 (10 games)  
 Most Net Yards—671 By Rodger Bird, 1964 (10 games)

### INDIVIDUAL PASSING-RECEIVING—Season

Most Attempts—239 By Babe Parilli, 1951 (11 games)  
 Most Completions—136 By Babe Parilli, 1951 (11 games)  
 Most Yards Passing—1823 By Rick Norton, 1965 (19 games)  
 Best Completion Percentage—.569 By Babe Parilli, 1951 (136 of 299 in 11 games)  
 Most Had Intercepted—21 By Dave Bair, 1967 (10 games)  
 Consecutive Passes Without Interception—56\* By Rick Norton, 1963  
 Most Catches—42 By Rick Kestner, 1964 (10 games)  
 Most Touchdown Passes—23 By Babe Parilli, 1950 (11 games)  
 Most TD's By Receiver—10 By Al Bruno, 1950 (11 games)  
 Most TD's By Receiver—10\* By Al Bruno, 1950 (11 games)  
 Most Passes Intercepted—9 By Jerry Claiborne, 1949 (11 games)  
 Most Yards Return Interceptions—197 By David Hunter, 1968 (10 games)

### INDIVIDUAL PUNTING-KICKOFFS—Season

Most Punts—101† By Ralph Kercheval, 1933 (10 games)  
 Most Yards On Punts—4394† By Ralph Kercheval, 1933 (101 punts in 10 games)  
 Best Punting Average (Minimum 100)—43.5\* By Ralph Kercheval, 1933 (10 games)  
 Most Punts Returned—25 By Dicky Lyons, 1966 (For 419 Yards in 10 games)  
 Most Yards Punts Returned—419 By Dicky Lyons in 1966 (25 Returns in 10 games)  
 Most Kickoff Returns—22 by Dicky Lyons (9 games, 1968)  
 Most Yards Kickoffs Returned—474 By Dicky Lyons, 1967 (10 games)  
 Best Average On Kickoff Returns—36.0 By Don Phelps, 1949 (5 for 180 in 11 games)

### INDIVIDUAL SCORING—Season

Most Points—78 By Rodger Bird, 1965 (13 TD's in 10 games)  
 Most Touchdowns—13 By Rodger Bird, 1965 (12 rushing, 1 catch in 10 games)  
 Most Touchdown Passes—23 By Babe Parilli, 1950 (11 games)  
 Most TD's By Receiver—10 By Al Bruno, 1950 (11 games)  
 Most PAT Attempts (Placement)—41 By Bob Gain, 1950 (11 games)  
 Most PAT's Made (Placement)—37 By Bob Gain (41 tries, 11 games, 1950)  
 Most Consecutive PAT's (Placement)—18 by Bobby Jones (10 games, 1968)  
 PAT Kick Percentage—100% By Delmar Hughes (13 of 13 in 10 games, 1955)  
 Most TD's Accounted For—28\* By Babe Parilli, 1950 (5 rush, 23 pass in 11 games)

### INDIVIDUAL TOTAL OFFENSE—Single Game

Most Plays—50 By Steve Tingle vs. Florida, 1969  
 Most Net Yards—363 By Rick Norton vs. Houston, 1965 (373 pass, minus 10 rush)

### INDIVIDUAL RUSHING—Single Game

Most Carries—30 By Larry Seiple vs. Auburn, 1966  
 Most Net Yards—267 By Bob Davis vs. Wash. & Lee, 1937  
 Best Average (5 minimum)—18.6 By Bob Kosid vs. Detroit, 1963  
 (10 minimum)—10.8 By Darrell Cox vs. Miami, 1963  
 (20 minimum)—7.6 By Bobby Cravens vs. Ga. Tech, 1958  
 Longest Run From Scrimmage—91 TD By Harry Jones vs. George Washington, 1951

### INDIVIDUAL PASSING-RECEIVING—Single Game

Most Attempts—41 By Steve Tingle vs. Florida, 1969  
 Most Completions—21 By Steve Tingle vs. Florida, 1969  
 Most Net Yards—373 By Rick Norton vs. Houston, 1965  
 Most Consecutive Completions—11 By Bernie Scruggs vs. Tennessee, 1969  
 Best Completion Average—.750 By Babe Parilli vs. North Dakota, 1950; Bob Hardy vs. Villanova, 1955  
 Most Touchdown Passes—5 By Jim Park vs. Earlham, 1914; 5\* By Babe Parilli vs. Cincinnati, North Dakota, 1950  
 Most Had Intercepted—6 By Rick Norton vs. Louisiana State, 1965; and Bernie Scruggs vs. West Virginia, 1969  
 Most Intercepted—3 By George Blanda vs. Xavier, 1948; Bradley Mills vs. Tennessee, 1952; Terry Beadles vs. Missouri, 1965  
 Longest Interception Return—101 By Turkey Hughes vs. Alabama, 1924; 100 TD by Bob Davis vs. Wash. & Lee, 1937; 100 TD by Dave Hunter vs. West Virginia, 1968  
 Most Passes Caught—10 By Calvin Bird vs. Mississippi, 1958; 10 By Steve Parrish vs. Vanderbilt, 1969  
 Most Yards By Receiver—185 By Rick Kestner vs. Mississippi, 1964  
 Most TD's By Receiver—4 By Al Bruno vs. North Dakota, 1950; Floyd Wright vs. Earlham, 1914  
 Longest TD Pass Play—92 by David Bair to Dicky Lyons vs. Georgia, 1968  
 Longest Non-Scoring Pass Play—78 Terry Beadles to Larry Seiple vs. Tenn., '66

### INDIVIDUAL PUNTING-KICKOFFS—Single Game

Most Punts—17 By Ralph Kercheval vs. Alabama, 1931  
 Most Yards On Punts—680 By Ralph Kercheval vs. Alabama, 1931 (17 punts)  
 Best Punting Average (10 minimum)—52.0\* By Ralph Kercheval vs. Cincinnati, 1933 (10 punts)  
 Most Punts Returned—6 by Dicky Lyons vs. Georgia, 1968  
 Most Yards Punts Returned—156 By Phil Cutchin vs. Georgia, 1946 (4 returns)  
 Most Kickoffs Returned—5 by Harry Jones vs. Tennessee, 1951; Dicky Lyons vs. Georgia, 1968  
 Most Yards Kickoffs Returned—160\* By Dicky Lyons vs. LSU, Oct. 21, 1967  
 Longest Punt—78 By Ralph Kercheval vs. Ga. Tech, 1933  
 Longest Punt Return—97 TD Dicky Lyons vs. Houston, 1966  
 Longest Kickoff Return—85 By Noah Mullins vs. Wash. & Lee, 1940; Dicky Lyons vs. LSU Oct. 21, 1967, and Roger Gann vs. Indiana, Sept. 20, 1969  
 Most Yards Kickoffs Returned—166 By Roger Gann vs. Indiana, 1969  
 Longest Punt Against UK—83 By Dixie Howell, Alabama, 1933  
 Longest Punt Return Against UK—88 By Lee Nalley, Vanderbilt, 1948  
 Longest KO Return Against UK—96 By Joe May, LSU, 1965, and Harvin Clark, Florida, 1969.

### INDIVIDUAL SCORING—Single Game

Most Points—43 (6 TD, 7 PAT) By William Tuttle vs. Maryville, 1914  
 Most Touchdowns—6 By William Tuttle vs. Maryville, 1914  
 Most Touchdowns Running—5 By Jim Park vs. Earlham, 1914  
 Most TD Passes Caught—4\* By Al Bruno vs. North Dakota, 1950; Floyd Wright vs. Earlham, 1914  
 Most Field Goals—2 By Jim Park vs. Miss. A&M, 1914; Clarkie Mayfield vs. Mississippi, 1961; Doc Rodes vs. Tennessee, 1915  
 Longest Field Goal—45 By Ralph Kercheval vs. Tulane, 1932  
 Most PAT's Att. (Placement)—10 By Bob Gain vs. North Dakota, 1950  
 Most PAT's Made (Placement)—10\* (consecutive) By Bob Gain vs. N. Dakota, 1950  
 Most TD's Passing—5 By Jim Park vs. Earlham, 1914; Babe Parilli vs. Cincinnati and North Dakota, 1950  
 Longest TD Run—91 By Harry Jones vs. George Washington, 1951  
 Longest Touchdown Pass Play—92 by David Bair to Dicky Lyons vs. Georgia, 1968

† Also National and Southeastern Conference Record.  
 \* Also Southeastern Conference Record.

## LEXINGTON TRANSIT CORP.

(Your City Bus Company)

RIDE THE BUS TO AND FROM  
THE GAME

Busses will be parked at the stadium after  
each game going the following routes:

EUCLID  
HOLLYWOOD  
ROSEMONT  
DOWNTOWN

(Transfer downtown to  
all bus lines)

IF YOU ARE GOING IN A GROUP  
CHARTER A BUS

PHONE 255-7756

# DeBoor

Storage  
Laundry  
Dry Cleaning  
Rug Cleaning

Buy U.S. Savings Bonds

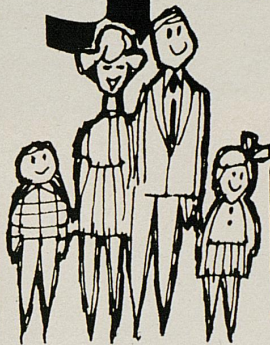
# KENTUCKY

No.	Name	Pos.	Class	Ht.	Wt.	Exp.	Hometown
2	Jim Lett, DB, So.			6-1	189	Fr.	Winfield, W. Va.
3	Bob Jones, KS, Sr.			6-2	171	2L	Lexington
4	Steve Tingle, QB, Jr.			5-10	175	1L	Louisville
5	Stan Forston, QB, Sr.			6-1	190	2L	Lexington
8	Bernie Scruggs, QB, Jr.			6-2	195	2L	Atlanta, Ga.
11	Paul Kareem, QB, Jr.			6-3	194	Sq.	Louisville
12	Earl Swindle, DB, So.			6-2	175	Fr.	Miami, Fla.
14	Jim Reed, OB, So.			5-10	174	Fr.	Springfield
15	Buzz Burnam, DB, So.			5-11	177	Fr.	Winchester
16	Ken O'Leary, DB, So.			5-10	168	Fr.	Cincinnati, Ohio
17	Paul Martin, OB, Sr.			5-10	175	2L	Owensboro
18	Joe Stephan, DB, Jr.			5-11	171	1L	Parkersburg, W. Va.
19	Dave Van Meter, DB, Jr.			5-11	183	1L	Elizabethtown
20	Dave Hunter, FLK, Sr.			5-11	173	2L	Pine Bluff, Ark.
21	Mike Meighan, OB, Sr.			5-11	196	Sq.	Avonmore, Pa.
22	Al Godwin, FLK, Sr.			5-11	176	1L	Raleigh, N. C.
24	Lee Clymer, OB, Jr.			5-9	182	Tr.	Allentown, Pa.
29	Jack Mathews, FLK, Sr.			5-10	193	2L	Montgomery, Ala.
30	Gary Knutson, OB, So.			5-9	183	Fr.	Bethesda, Md.
32	Cecil Bowens, OB, So.			6-3	226	Fr.	Louisville
33	John Puntillo, OB, Sr.			6-0	198	Sq.	South Bend, Ind.
34	Steve Scruggs, LB, So.			6-1	195	—	Atlanta, Ga.
35	Jim Smith, LB, So.			5-11	198	Fr.	South Bend, Ind.
36	John Sandrick, LB, So.			6-0	213	Fr.	Whiting, Ind.
38	Bob Wixson, LB, Jr.			5-11	191	1L	Louisville
39	Frank Rucks, OB, Sr.			6-0	210	2L	Henderson
41	Wilbur Hackett, LB, Sr.			5-9	186	2L	Louisville
42	Houston Hagg, OB, Sr.			6-2	213	1L	Owensboro
43	Bill Denny, LB, So.			5-11	199	Fr.	Louisville
44	Arvel Carroll, LB, So.			5-11	207	Fr.	Louisville
45	Clint Opheikens, DE, Jr.			5-11	223	Sq.	Ogden, Utah
48	Bill Schneider, OG, So.			5-11	226	Sq.	Louisville
50	Gayle Goins, LB, Jr.			6-0	219	Sq.	Owensboro
52	Art Honeycutt, OG, So.			6-0	226	Sq.	Angleton, Texas
53	Winston Gaffron, C, Jr.			6-2	204	Sq.	Brownsville, Tenn.
54	Pat Eckenrod, C, Sr.			6-4	214	2L	Chattanooga, Tenn.
55	Tom Searcy, C, So.			6-2	213	Fr.	Worthville
56	John Marcum, OG, So.			6-0	228	Sq.	Louisville
58	Ken Krause, DT, So.			6-2	229	Fr.	Fon du Lac, Wisc.
59	Joe Federspiel, LB, Jr.			6-1	224	1L	Louisville
61	Tom Morris, OG, Jr.			5-11	222	1L	Chattanooga, Tenn.
62	Rick Muench, LB, Jr.			6-2	205	1L	Highland Heights
63	Tom Clark, OG, So.			6-2	225	Fr.	Owensboro
64	Jerry Bentley, OG, Jr.			6-2	230	1L	South Shore
65	Jim Hill, OG, So.			5-11	241	Sq.	Louisville
66	Mike Meck, OG, Jr.			6-0	225	JC	Fallbrook, Calif.
67	Dave Hanson, OT, Sr.			6-2	230	2L	Greensburg, Pa.
68	Carl Melvin, OG, So.			6-0	213	Fr.	Paintsville
69	Bill Bushong, DT, Jr.			6-3	260	Sq.	Tompkinsville
70	Al Fish, DT, Sr.			6-0	246	1L	Holden, Mass.
71	Jack Brown, OT, Jr.			6-5	245	Sq.	Gallipolis, Ohio
72	Dave Pursell, OT, Sr.			6-4	250	2L	Morrisville, Pa.
73	Bruce Sauerbry, OT, Sr.			6-3	218	Sq.	Langhorne, Pa.
74	Dave Roller, DT, Sr.			6-2	240	2L	Dayton, Tenn.
75	Dan Neal, C, Jr.			6-3	234	Sq.	Louisville
76	Mike Deggendorf, DE, So.			6-3	223	Fr.	Cincinnati, Ohio
78	Fred Hamberg, OG, So.			6-1	216	Fr.	Owensboro
79	Dan Featherston, OT, So.			6-3	213	Sq.	Lexington
82	Tom Domhoff, OE, Jr.			6-1	216	Sq.	Louisville
83	Steve Parrish, OE, Jr.			6-0	185	1L	Evansville, Ind.
84	Tom Crowe, OE, Jr.			6-3	220	1L	Owensboro
85	Jim Mitchell, OE, Sr.			6-0	198	2L	Louisville
86	Jim Grant, OE, Jr.			6-2	196	1L	Louisville
87	Ken King, LB, So.			6-2	207	Fr.	Louisville
88	Roger Greer, DE, Sr.			6-3	196	1L	Burdine
89	Dave Hardt, DE, Sr.			6-4	232	2L	Attleboro, Mass.
90	Bob Finnell, LB, Jr.			5-11	191	Sq.	Atlanta, Ga.
91	Frank Kirschner, LB, Jr.			6-1	201	Fr.	Detroit, Mich.
92	Don Porterfield, DE, Sr.			6-2	227	2L	Edgewood, Md.
94	Raynard Makin, DE, Sr.			6-3	243	2L	Hobbs, N. M.
96	Les Lyons, DT, So.			6-1	234	Fr.	Ashland
97	Mike Marnhout, DT, So.			6-2	226	Fr.	Pt. Pleasant, W. Va.
98	Stan Jones, DE, So.			6-2	221	Sq.	Pikeville

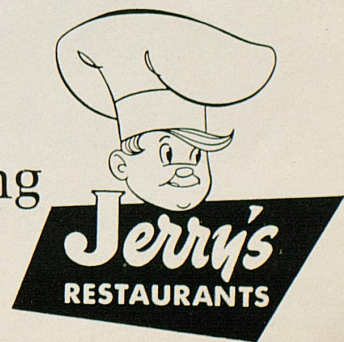
# AUBURN

No.	Name	Pos.	Class	Ht.	Wt.	Hometown
3	Gardner Jett, SP, So.			5-6	156	Atlanta, Ga.
4	David Beverly, SP, So.			6-2	177	Sweet Water, Ala.
7	Pat Sullivan, QB, Jr.			6-0	188	Birmingham, Ala.
9	Roger Pruett, QB, Sr.			5-10	184	Pisgah, Ala.
10	Tommy Traylor, QB, Sr.			5-11	189	Montgomery, Ala.
15	Mickey Zofko, TB, Sr.			6-2	195	Melbourne, Fla.
16	Scott Blackmon, S, Sr.			6-2	180	Eufaula, Ala.
17	Ralph Brock, QB, So.			6-0	186	Birmingham, Ala.
18	Philip Gilchrist, SB, Jr.			5-11	174	Mobile, Ala.
19	Dave Beck, DB, So.			5-9	173	Huntsville, Ala.
20	Terry Page, FB, Jr.			6-3	222	Mobile, Ala.
22	Harry Unger, FB, So.			6-2	204	Fayette, Ala.
23	Terry Henley, TB, So.			5-11	174	Oxford, Ala.
24	Tommy Lowry, TB, Jr.			5-10	198	Oneonta, Ala.
25	Wallace Clark, FB, Sr.			6-0	195	Trion, Ga.
27	Johnny Simmons, S, So.			5-10	171	Childersburg, Ala.
28	Larry Willingham, SB, Sr.			6-1	185	Birmingham, Ala.
31	Steve Wilson, LB, So.			6-0	191	Huntsville, Ala.
35	Rick Chastain, LB, So.			5-9	197	Atlanta, Ga.
36	Gene Walker, LB, Jr.			6-1	185	Columbus, Ga.
37	Mike Fitzhugh, LB, Jr.			5-11	190	Mobile, Ala.
38	Bobby Woodruff, LB, Sr.			6-0	207	Lowndesboro, Ala.
39	John Hayworth, LB, Jr.			5-11	207	Decatur, Ga.
40	Mike Neel, LB, So.			5-9	186	Birmingham, Ala.
43	James Owens, SB, So.			6-2	198	Fairfield, Ala.
44	Alvin Bresler, WB, Sr.			6-2	181	Birmingham, Ala.
46	Marrell Jerkins, LB, Sr.			6-0	198	Enterprise, Ala.
48	Doug Brasse, SE, Sr.			5-11	175	Wheaton, Ma.
52	Bobby Strickland, LB, Sr.			6-1	212	Grand Bay, Ala.
53	Spence McCracken, C, Jr.			5-11	200	Montgomery, Ala.
55	Gene Hartman, LB, So.			6-2	222	Huntsville, Ala.
56	Jim Tyler, C, So.			6-0	228	Marianna, Fla.
57	Allen Moore, LB, So.			6-1	215	Doraville, Ga.
58	Bill McManus, C, Jr.			5-9	201	Dalton, Ga.
60	Larry Hill, OT, Jr.			6-0	249	Alex City, Ala.
61	Jimmy Speigner, OG, Sr.			6-0	221	Montgomery, Ala.
63	Donnie Tidwell, OG, So.			6-3	195	Calera, Ala.
64	Johnny McDonald, OG, Sr.			6-2	228	Tusculum, Ala.
66	Steve Smith, OT, So.			6-4	224	College Park, Ga.
67	John Valentine, OG, Sr.			5-11	194	Melbourne, Fla.
69	Tommy Yearout, DT, Jr.			6-0	209	Birmingham, Ala.
71	Larry Thompson, OG, So.			6-1	218	Tarrant, Ala.
72	Frank Dickson, DT, So.			6-3	230	Dalton, Ga.
74	Danny Speigner, OT, Jr.			6-2	226	Montgomery, Ala.
76	Don Bristow, DT, Sr.			6-2	230	Walter, Ala.
77	Mac Lorendo, OT, So.			6-2	232	Auburn, Ala.
79	Hal Hamrick, OT, Sr.			6-4	237	Douglasville, Ga.
80	Ronnie Ross, TE, Sr.			6-1	200	Tuscaloosa, Ala.
84	Rett Davis, SE, So.			6-1	178	Auburn, Ala.
86	Robby Robinett, TE, Jr.			6-3	211	Columbus, Miss.
88	Terry Beasley, SE, Jr.			5-11	185	Montgomery, Ala.
89	Dick Schmalz, WB, Jr.			6-1	194	Birmingham, Ala.
90	Pete Pummer, DT, Sr.			5-11	222	Montgomery, Ala.
92	Bob Brown, DE, Jr.			6-3	216	Birmingham, Ala.
93	Danny Sanspree, DE, So.			6-4	226	Atmore, Ala.
94	Neal Dettmering, DE, Sr.			6-3	215	Fayetteville, Ga.
95	Scottie Elam, DE, Jr.			6-0	190	Birmingham, Ala.
96	Bruce Bylsma, DE, Jr.			6-3	211	Montgomery, Ala.
97	Keith Green, DT, Sr.			6-0	202	Montgomery, Ala.
99	Eddie Welch, DE, So.			6-1	207	Columbus, Ga.

# eating at Jerry's is a family affair.



a family affair worth remembering  
is a meal at Jerry's. There's something  
for everyone... a quick snack, a complete dinner, carry  
out service or drive-in for an "in-car picnic".



Wouldn't an ice cold Coke  
taste good right now?



**OFFENSE**

- 88 TERRY BEASLEY . . . . . SE
- 74 DANNY SPEIGNER . . . . . LT
- 61 JIMMY SPEIGNER . . . . . LG
- 58 BILL McMANUS . . . . . C
- 67 JOHN VALENTINE . . . . . RB
- 60 LARRY HILL . . . . . RT
- 80 RONNIE ROSS . . . . . TE
- 7 PAT SULLIVAN . . . . . QB
- 15 MICKEY ZOFKO . . . . . TB
- 25 WALLACE CLARK . . . . . FB
- 89 DICK SCHMALZ . . . . . WB

**DEFENSE**

- 92 DON PORTERFIELD . . . . . RE
- 70 AL FISH . . . . . RT
- 74 DAVE ROLLER . . . . . LT
- 89 DAVE HARDT . . . . . LE
- 41 WILBUR HACKETT . . . . . ROLB
- 59 JOE FEDERSPIEL . . . . . RILB
- 44 ARVEL CARROLL . . . . . LILB
- 62 RICK MUENCH . . . . . LOLB
- 18 JOE STEPHAN . . . . . RHB
- 15 BUZZ BURNAM . . . . . LHB
- 12 EARL SWINDLE . . . . . S

**Auburn**

**DEFENSE**

- 92 BOB BROWN . . . . . LE
- 76 DON BRISTOW . . . . . LT
- 97 KEITH GREEN . . . . . RT
- 95 SCOTT ELAM . . . . . RE
- 52 BOBBY STRICKLAND . . . . . SLB
- 39 JOHN HAYWORTH . . . . . GLB
- 38 BOBBY WOODRUFF . . . . . MLB
- 40 MIKE NEEL . . . . . RLB
- 18 PHIL GILCHRIST . . . . . LSB
- 28 LARRY WILLINGHAM . . . . . RSB
- 27 JOHNNY SIMMONS . . . . . S

**Kentucky**

**OFFENSE**

- 22 AL GODWIN . . . . . SE
- 64 JERRY BENTLEY . . . . . RT
- 63 TOM CLARK . . . . . RG
- 54 PAT ECKENROD . . . . . C
- 66 MIKE MECK . . . . . LG
- 67 DAVE HANSON . . . . . LT
- 84 TOM CROWE . . . . . TE
- 8 BERNIE SCRUGGS . . . . . QB
- 32 CECIL BOWENS . . . . . LHB
- 20 DAVE HUNTER . . . . . RHB
- 24 LEE CLYMER . . . . . FB

**TIGER SQUAD**

- 3 Jett, SP
- 4 Beverly, SP
- 7 Sullivan, QB
- 9 Pruett, SP
- 10 Traylor, QB
- 12 T. Smith, QB
- 14 Oates, SB
- 15 Zofko, TB
- 16 Blackman, S
- 17 Brock, QB
- 18 Gilchrist, SB
- 19 Beck, DB
- 20 Page, FB
- 21 Cannon, WB
- 22 Unger, FB
- 23 Henley, TB
- 24 Lowry, TB
- 25 Clark, FB
- 26 Sam Smith, SB
- 27 Simmons, S
- 28 Willingham, SB
- 29 Lyon, S
- 30 Jones, FB
- 31 Wilson, LB
- 32 Crawford, TB
- 33 Gravat, LB
- 34 Shelby, FB
- 35 Chastain, LB
- 36 Walker, LB
- 37 Fitzhugh, LB
- 38 Woodruff, LB
- 39 Hayworth, LB
- 40 Neel, LB
- 41 Hester, TB
- 42 Staegers, SB
- 43 Owens, SB
- 44 Bresler, WB
- 45 Atkins, S
- 46 Jerkins, LB
- 47 Erwin, WB
- 48 Brasse, SE
- 49 Van Yperen, SB
- 52 Strickland, LB
- 53 McCracken, C
- 55 Hartman, LB
- 56 Tyler, C
- 57 Moore, LB
- 58 McManus, C
- 59 Moon, LB
- 60 Hill, OT
- 61 J. Speigner, OG
- 62 Rogers, OG
- 63 Tidwell, OG
- 64 J. McDonald, OG
- 65 Casey, OG
- 66 S. Smith, OT
- 67 Valentine, OG
- 69 Yearout, DT
- 70 Nichols, DT
- 71 Thompson, OG
- 72 Dickson, DT
- 73 Colley, OT
- 74 D. Speigner, OT
- 75 Lakey, DT
- 76 Bristow, DT
- 77 Lorendo, OT
- 78 Sivley, DT
- 79 Hamrick, OT
- 80 Ross, TE
- 82 Law, TE
- 84 Davis, SE
- 86 Robinett, TE
- 87 Wahlers, TE
- 88 Beasley, SE
- 89 Schmalz, WB
- 90 Pummer, DT
- 91 B. McDonald, DE
- 92 Brown, DE
- 93 Sanspree, DE
- 94 Dettmerring, DE
- 95 Elam, DE
- 96 Bylsma, DE
- 97 Green, DT
- 98 Bradford, DT
- 99 Welch, DE

**WILDCAT SQUAD**

- 2 Lett, DB
- 3 Jones, B., KS
- 4 Tingle, QB
- 5 Forston, QB
- 8 Scruggs, QB
- 11 Karem, QB
- 12 Swindle, DB
- 14 Reed, OB
- 15 Burnam, DB
- 16 O'Leary, DB
- 17 Martin, OB
- 18 Stephan, DB
- 19 Van Meter, DB
- 20 Hunter, FLK
- 21 Meighan, OB
- 22 Godwin, FLK
- 24 Clymer, OB
- 29 Mathews, FLK
- 30 Knutson, OB
- 32 Bowens, OB
- 33 Puntillo, OB
- 34 Scruggs, LB
- 35 Smith, LB
- 36 Sandrick, LB
- 38 Wixson, LB
- 39 Rucks, OB
- 41 Hackett, LB
- 42 Hogg, OB
- 43 Denny, LB
- 44 Carroll, LB
- 45 Opheikens, DE
- 48 Schneider, OG
- 50 Goins, LB
- 52 Honeycutt, OG
- 53 Gaffron, C
- 54 Eckenrod, C
- 55 Searcy, C
- 56 Marcum, OG
- 58 Krause, DT
- 59 Federspiel, LB
- 61 Morris, OT
- 62 Muench, LB
- 63 Clark, OG
- 64 Bentley, OG
- 65 Hill, OG
- 66 Meck, OG
- 67 Hanson, OT
- 68 Melvin, OG
- 69 Bushong, DT
- 70 Fish, DT
- 71 Brown, OT
- 72 Pursell, OT
- 73 Sauerbry, OT
- 74 Roller, DT
- 75 Neal, C
- 76 Doggendorf, DE
- 78 Hamberg, OG
- 79 Featherston, OT
- 82 Domhoff, OE
- 83 Parrish, OE
- 84 Crowe, OE
- 85 Mitchell, OE
- 86 Grant, OE
- 87 King, LB
- 88 Greer, DE
- 89 Hardt, DE
- 90 Finnell, LB
- 91 Kirschner, LB
- 92 Porterfield, DE
- 94 Makin, DE
- 96 Lyons, DT
- 97 Marnhout, DT
- 98 Jones, S., DE

**OFFICIALS**

- Referee . . . . . Charles Bowen
- Linesman . . . . . Dave Scobey
- Back Judge . . . . . Dick Pace
- Umpire . . . . . Charles Brown
- Field Judge . . . . . Bill Bryson
- E.C.O. . . . . J. L. Jerden

"COCA-COLA" AND "COKE" ARE REGISTERED TRADE-MARKS OF THE COCA-COLA COMPANY.



**It's the real thing. Coke.**

Trade-mark ®

# THE LEADER in banking service.

## ■ HIGHEST SAVINGS INTEREST

Central Bank pays the highest savings interest banks are permitted to pay. 4½% annual interest on passbook savings, 5% on one-year certificates, 5¾% on two-year certificates, and up to 7½% on \$100,000 certificates. And all interest is compounded daily.

## ■ FREE CHECKING SERVICE

Central Bank never charges a service fee on personal or business accounts as long as a \$100 balance is maintained.

## ■ LONGEST BANKING HOURS

Central Bank has the longest banking hours of any bank for miles around. Offices open, 9 a.m. to 4 p.m., Monday through Thursday, Fridays, 9 a.m. to 7 p.m. Drive-up windows open, 7:30 a.m. to 6 p.m., Monday through Thursday, Fridays, 7:30 a.m. to 7 p.m.

## ■ EASIEST-TO-GET LOANS

If you need money for any worthy purpose, you can count on Central Bank to give you the fastest service at the lowest interest rates.

**SHOULDN'T YOU BE BANKING AT CENTRAL?**



*We take the worry out of money.*

**CENTRAL BANK**  
AND TRUST COMPANY

Short and Upper, Turfland Mall, Southland Drive, Eastland Shopping Center

**KENTUCKY SPECIALISTS**

PUNTERS: Hardt (89), Knutson (30)  
 KICKOFFS: Bushong (69), Muench (62)  
 PAT'S: Jones, B. (3), Muench (62)

**INFORMATION**

SERIES: UK Won 5, Auburn Won 12, Ties 2

**KENTUCKY  
Wildcats**

(SENIORS, Juniors, Sophomores)

**FACTS ABOUT KENTUCKY**

President ..... Dr. Otis A. Singletary  
 Athletic Director ..... Harry C. Lancaster  
 Head Coach ..... John Ray  
 Publicist ..... Russell Rice  
 Colors ..... Blue and White  
 Offense ..... Multiple

TE	LT	LG	C	RG	RT	SE
84 Crowe	67 HANSON	66 Meck	54 ECKENROD	23 Clark	64 Bentley	22 Godwin
85 MITCHELL	72 PURCELL	78 Hamberg	75 Neal	61 Morris	79 Featherston	86 Grant

**OFFENSE**

RH HUNTER  
 20 HUNTER  
 17 MARTIN

QB SCRUGGS  
 8 SCRUGGS  
 5 FORSTON

FB CLYMER  
 24 CLYMER  
 94 MAKIN

LH BOWENS  
 32 BOWENS  
 14 REED

LIB CARROLL  
 44 CARROLL  
 35 SMITH

RIB FEDERSPIEL  
 59 FEDERSPIEL  
 90 FINNELL

ROLB HACKETT  
 41 HACKETT  
 38 WIXSON

RT FISH  
 70 FISH  
 96 LYONS

RE PORTERFIELD  
 92 PORTERFIELD  
 91 KIRSCHNER

RH STEPHAN  
 18 STEPHAN  
 19 VAN METER

S SWINDLE  
 12 SWINDLE  
 16 O'LEARY

LH BURNAM  
 15 BURNAM  
 5 LETT

LOB MUENCH  
 62 MUENCH  
 87 KING

**DEFENSE**

LE	LT	LIB	RIB	ROLB	RT	RE
89 HARDT	74 ROLLER	44 Carroll	59 Federspiel	41 HACKETT	70 FISH	92 PORTERFIELD
76 Deggendorf	69 Bushong	35 Smith	90 Finnell	38 Wixson	96 Lyons	91 Kirschner

**DEFENSE**

RH STEPHAN  
 18 STEPHAN  
 19 VAN METER

S SWINDLE  
 12 SWINDLE  
 16 O'LEARY

LH BURNAM  
 15 BURNAM  
 5 LETT

LOB MUENCH  
 62 MUENCH  
 87 KING

**AUBURN SPECIALISTS**

PUNTERS: Beverly (4), Pruett (9)  
 FGs & PAT'S: Jett (3)  
 KICKOFFS: Tyler (56)

**AUBURN  
Tigers**

(SENIORS, Juniors, Sophomores)

**FACTS ABOUT AUBURN**

President ..... Dr. Harry M. Philpott  
 Athletic Director ..... G. W. (Jeff) Beard  
 Head Coach ..... Ralph Jordan  
 Publicist ..... Buddy Davidson  
 Colors ..... Burnt Orange and Navy Blue  
 Offense ..... Multiple T

SE	LT	LG	C	RG	RT	TE
88 Beasley	74 D. Speigner	61 J. SPEIGNER	58 McManus	67 VALENTINE	60 Hill	80 ROSS
48 Brasse	77 Lorendo	63 Tidwell	53 McCRACKEN	71 Thompson	66 S. Smith	86 Robinett

**OFFENSE**

QB SULLIVAN  
 7 SULLIVAN  
 10 TRAYLOR

FB CLARK  
 25 CLARK  
 22 URIGER

WB SCHMALZ  
 89 SCHMALZ  
 44 BRESLER

TB ZOFKO  
 15 ZOFKO  
 24 LOWRY

RE ELAM  
 95 ELAM  
 93 SANSAPREE

RLB WALKER  
 40 NEEL  
 36 WALKER

GLB HAYWORTH  
 39 HAYWORTH  
 57 MOORE

**OFFENSE**

LE	LT	LIB	RIB	ROLB	RT	RE
92 Brown	76 BRISTOW	97 GREEN	95 Elam	52 STRICKLAND	40 Neel	39 Hayworth
94 DETTMERING	90 PUMMER	69 Yearout	93 Sansapree	46 JERKINS	36 Walker	57 Moore

**DEFENSE**

MLB WOODRUFF  
 38 WOODRUFF  
 55 Hartman

LSB GILCHRIST  
 18 GILCHRIST  
 19 Beck

RSB WILLINGHAM  
 28 WILLINGHAM  
 43 Owens

S SIMMONS  
 27 SIMMONS  
 16 Blackman

**DEFENSE**

**U OF K FOOTBALL**

*Exclusively on*

**WVLK**

**The No. 1 Spot For Sports**

Brought To You By



And



Also Hear High School Football And SEC "Game of the Week"

*Good Luck*

**WILDCATS**

---

**UNIVERSITY OF KENTUCKY FOOTBALL NETWORK**



WILDCAT ALL-AMERICANS

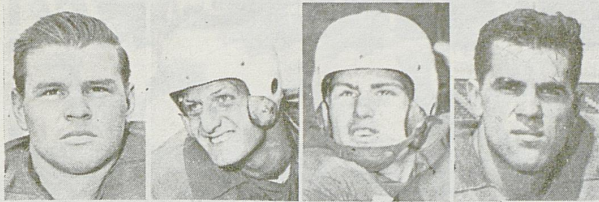


CLYDE JOHNSON  
Tackle—1942

BOB GAIN  
Tackle—1949-50

VITO PARILLI  
QB—1950-51

DOUG MOSELEY  
Center—1951

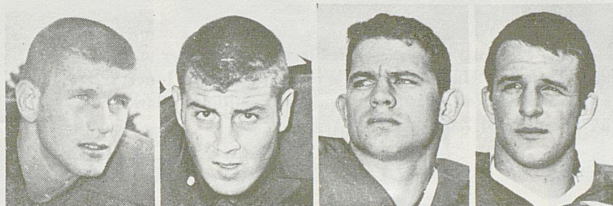


STEVE MEILINGER  
E-QB-HB—1952-53

RAY CORRELL  
Guard—1953

HOWARD SCHNELLENBERGER  
End—1955

LOU MICHAELS  
Tackle—1956-57



IRV GOODE  
Center—1961

HERSCHEL TURNER  
Tackle—1963

RODGER BIRD  
Tailback—1965

RICK NORTON  
Quarterback—1965



SAM BALL  
Tackle—1965

1,000-YARD PERFORMERS

Year	Player—Pos.	Runs	Yards	Passes	Yards	Plays	Yards
1965	Rick Norton (QB)	57	-117	214	1823	271	1706
1950	Babe Parilli (QB)	31	54	203	1627	234	1681
1951	Babe Parilli (QB)	30	-161	239	1643	269	1482
1964	Rick Norton (QB)	70	-195	202	1514	272	1319
1963	Rick Norton (QB)	87	-63	182	1177	269	1114
1954	Bob Hardy (QB)	91	122	108	887	191	1009
1969	Bernie Scruggs (QB)	116	31	183	969	299	1000

(Norton, with a record high accumulation in 1965, gained the distinction of becoming the first UK player to achieve the coveted mark in three straight years.)

**LIVE MODERN ELECTRIC**

**SWITCH**  
*To The Good Life!*

**KENTUCKY UTILITIES COMPANY**

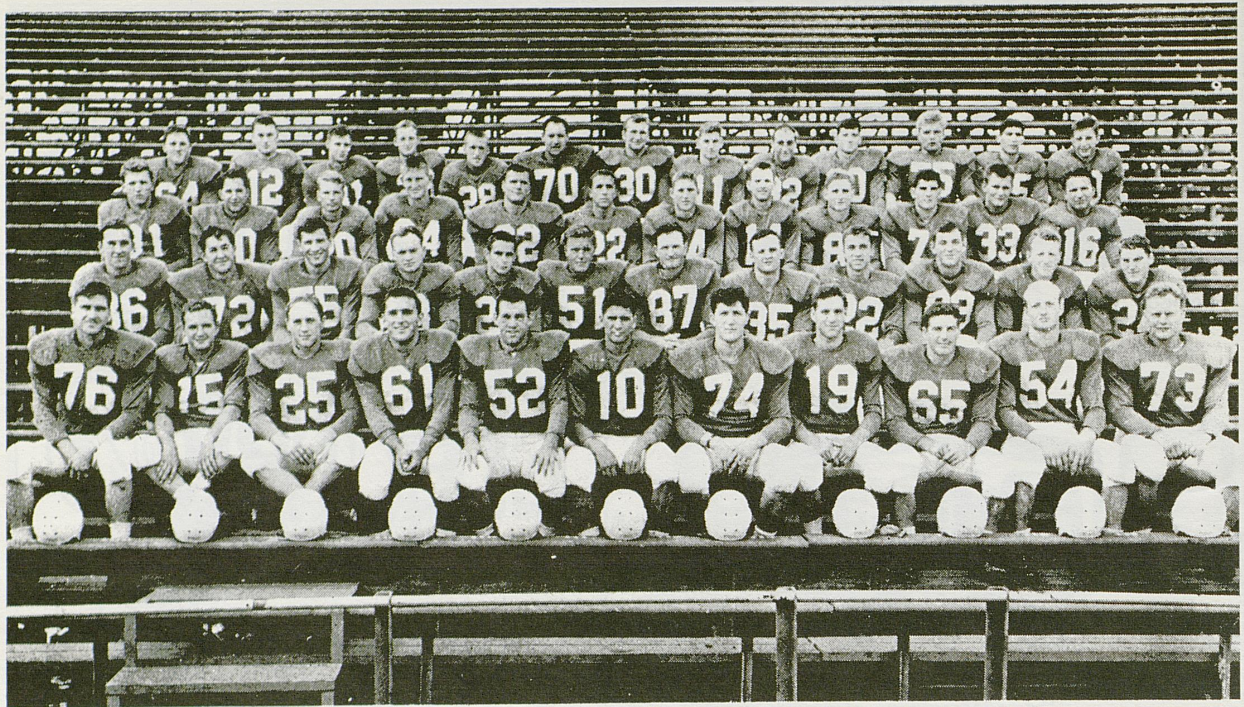
*A Hearty Welcome To*  
**The Little Inn**  
5 Minutes From Downtown  
Route 60 East

**- FEATURING -  
Charcoal Steaks**

**CHOICE  
Prime Ribs of Beef**

**Sea Food - Chops - Chicken**

**Cocktails**



Bottom row—Vance, Brooks, Conde, Ignarski, Schaffnit, Parilli, Yowarsky, Martin, A. Hamilton, Correll, and Pope. Second row—Netoskie, Weaver, Rogers, Wooddell, Lawson, Moseley, McClendon, Buckner, L. Jones, Dyer, P. Jones, and E. Hamilton. Third row—Fuller, Dawson, Haydon, Fry, Wannamaker, H. Jones, Webb, Hunt, Griggs, Baldwin, Leskovar, and Kozlowski. Fourth row—Donaldson, Brainard, Fillion, Clark, Jamerson, Gain, Lukawski, Farley, Fucci, James, Mackenzie, Bruno, and Zaranka.

## THOSE WERE THE DAYS, MY FRIEND, WHEN WILDCATS WON BOTH CROWNS

Homecoming 1970 observes the 20th anniversary of the 1950 University of Kentucky football team which rolled over 10 straight foes and clinched the Wildcats' first and only Southeastern Conference football championship before losing to Tennessee, 7-0, in freezing weather in Knoxville.

Led by Coach Paul (Bear) Bryant, the Wildcat squad then traveled to New Orleans to meet Bud Wilkinson's national champion Oklahoma Sooners in the 1951 Sugar Bowl.

When the battle got under way, it looked as if the nation's writers had reversed things in ranking the 'Cats below the Sooners. After the first set of plays,

the Wildcat line began to show the Red team how to play the game.

The defensive unit wasn't the whole show, however, as Wildcat quarterback Vito (Babe) Parilli, picked as the nation's outstanding backfield star, began to unravel a series of plays which brought the 90,000 spectators to rigid attention.

Wildcat fans were brought to their feet, amazed, but deliriously happy, when Parilli spotted Wilbur (Shorty) Jamerson in the Sooner end zone and unloaded one of his bullet passes. Jamerson, covered by two Sooners, jumped high and came down with the ball tucked tightly in his arm.

Another pass set up Kentucky's second score. Parilli heaved a long one to Al Bruno in the second quarter, and Bruno was pulled down one foot short of the goal line by Oklahoma's Jack Lockett. On the next play, Jamerson scored the winning touchdown and Bob Gain kicked the extra point for Kentucky's total of 13.

The 'Cats protected their lead in the second half and won, 13-7. Tackle Walt Yowarsky, a tower on defense, was named the game's outstanding player.

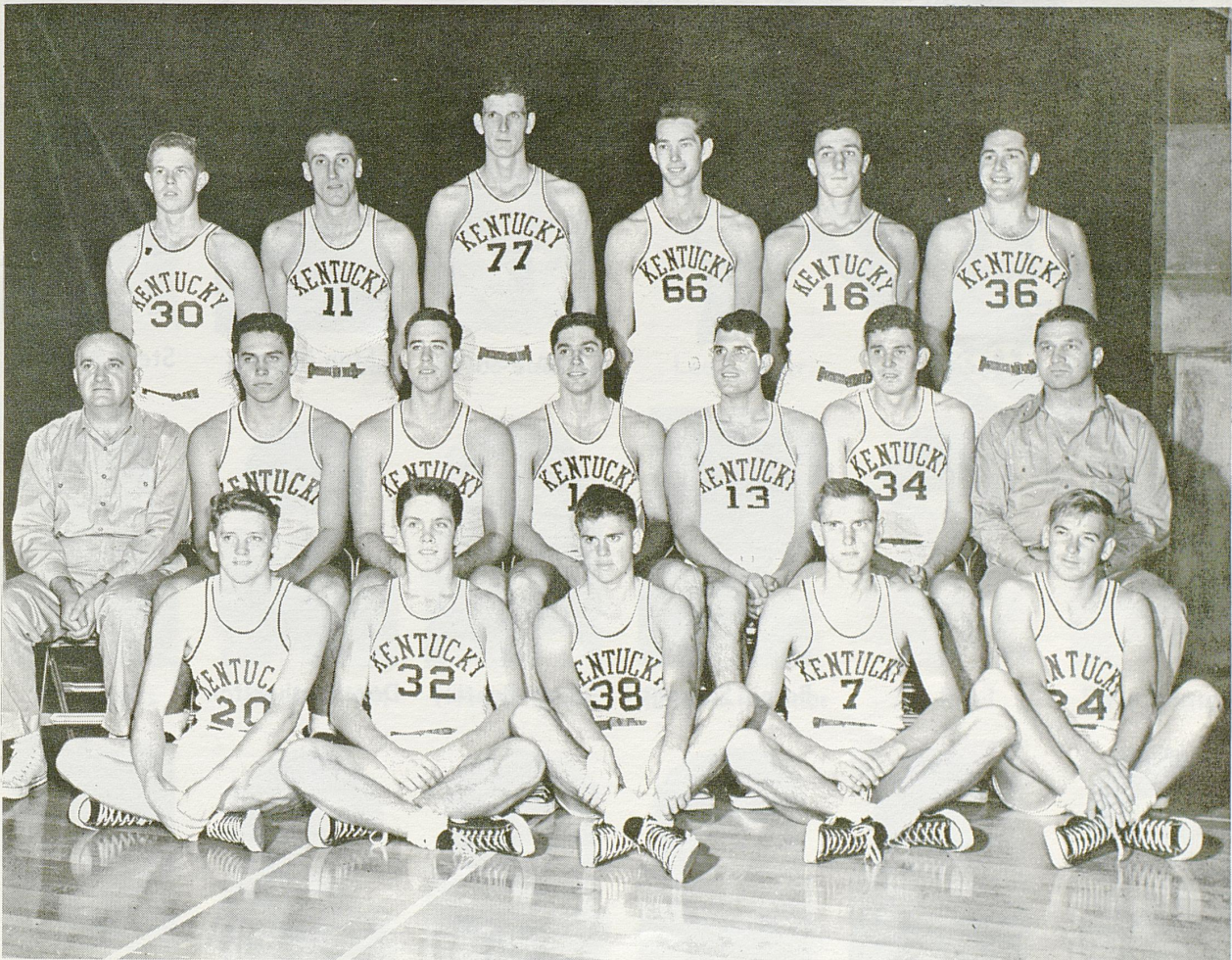
The same school year, Coach Adolph Rupp's Wildcat basketball team, voted best in the nation by writers and coaches, was champion of the SEC for the

eighth straight year and ended the season with a 32-2 record.

Featuring such performers as Bobby Watson, Frank Ramsey, Cliff Hagan, Skippy Whitaker, Shelby Linville, Bill Spivey, Lou Tsiropoulos and Capt. Walt Hirsh, the Wildcats defeated Kansas State, 68-58 in the NCAA final.

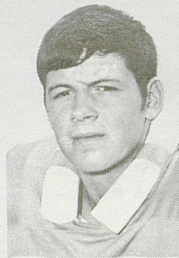
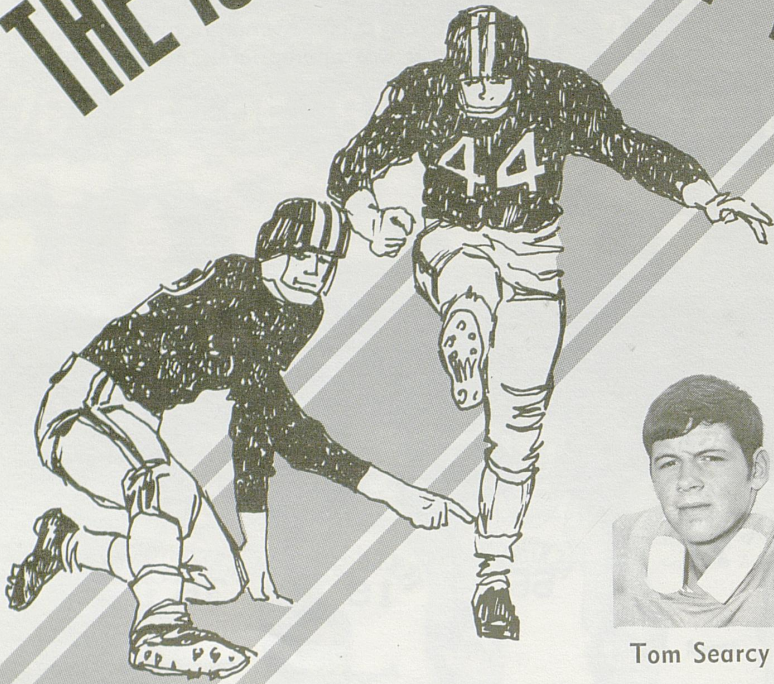
By adding the basketball title to their football crown, the Wildcats became the first in SEC history to hold both at the same time.

The stretch of Euclid Avenue from South Limestone to Rose Street was appropriately named "Avenue of Champions."



N.C.A.A. AND S.E.C. CHAMPIONS—1950-'51 — Front Row (left to right) Lindle Castle, Lucian Whitaker, Bob Watson, Guy Strong, Ches Riddle. Middle Row—Coach Adolph Rupp, Cliff Hagan, C. M. Newton, Walt Hirsch, Paul Lansaw, Dwight Price, Asst. Coach Harry Lancaster. Back Row—Frank Ramsey, Shelby Linville, Bill Spivey, Roger Lane, Lou Tsiropoulos, Reed Morgan.

# THE 1970 KENTUCKY WILDCATS



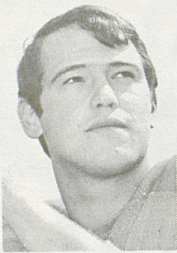
Tom Searcy



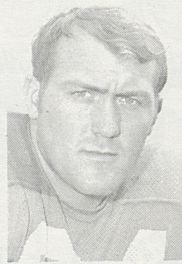
Stan Forston



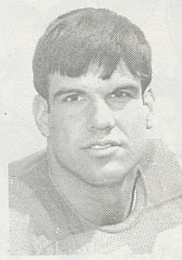
Steve Scruggs



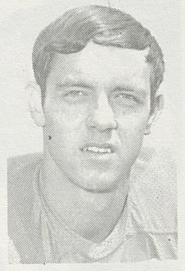
Bernie Scruggs



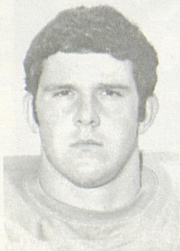
Jerry Bentley



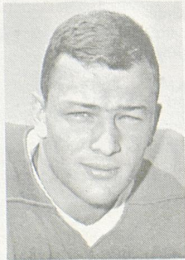
Dan Featherston



Bob Jones



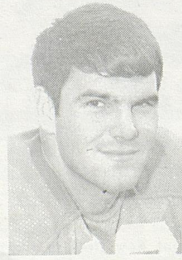
Carl Melvin



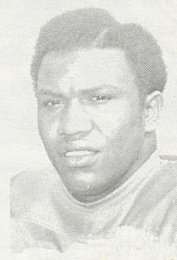
Bob Finnell



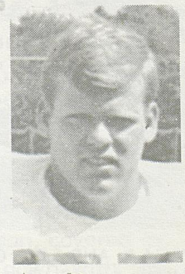
Tom Domhoff



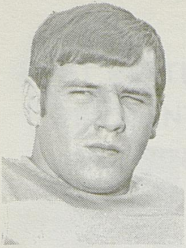
Raynard Makin



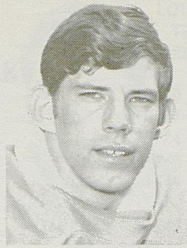
Arvel Carroll



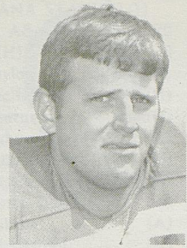
Art Honeycutt



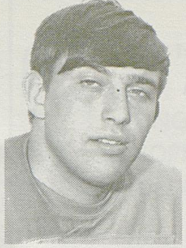
Dave Roller



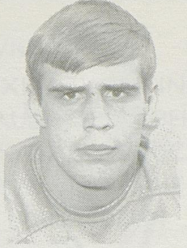
Jim Lett



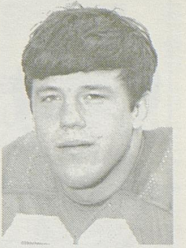
John Marcum



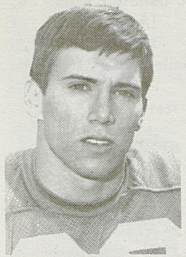
Ken Krause



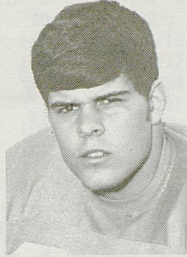
Jack Mathews



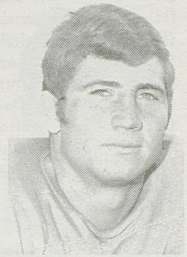
Bob Wixson



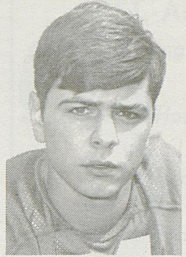
Al Godwin



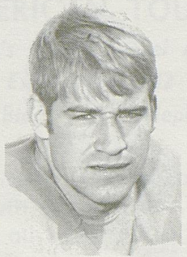
Mike Marnhout



Earl Swindle



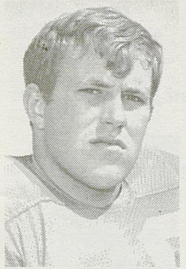
Paul Karem



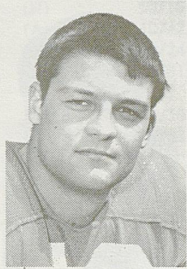
Joe Federspiel



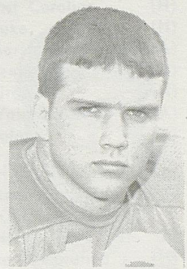
Gary Knutson



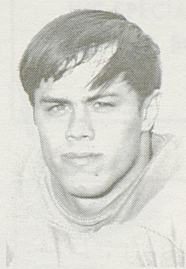
Al Fish



Mike Meighan



Bruce Sauerbry



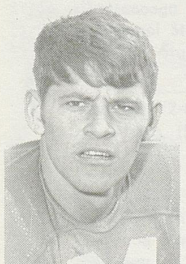
Lee Clymer



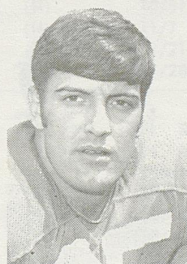
Joe Stephan



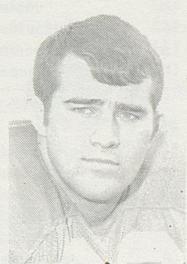
Cecil Bowens



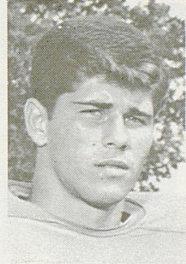
Stan Jones



Jim Mitchell



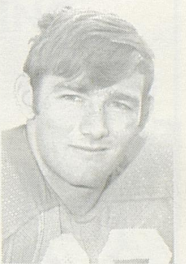
Frank Rucks



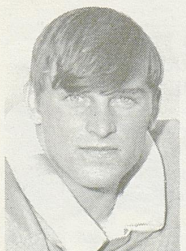
Frank Kirschner



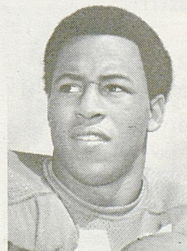
Jim Reed



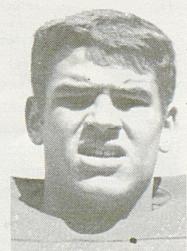
Dave Hunter



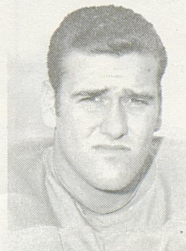
Jim Smith



Wilbur Hackett



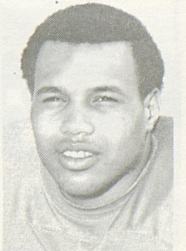
John Sandrick



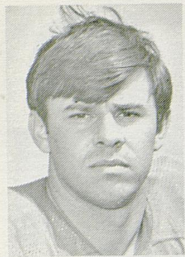
Bill Schneider



Don Porterfield



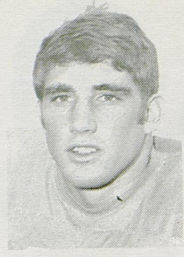
Bill Denny



Steve Tingle



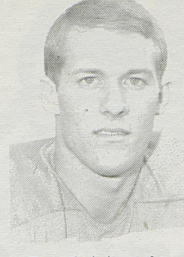
Buzz Burnam



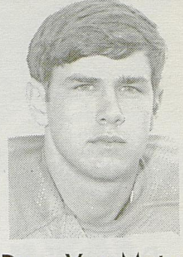
Ken O'Leary



Dave Hanson



Paul Martin



Dave Van Meter



John Puntillo



Tom Morris



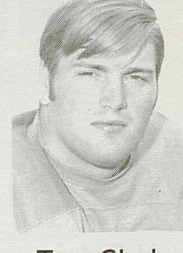
Rick Muench



Dan Neal



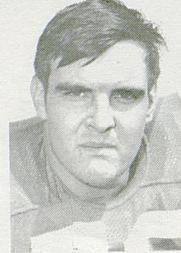
Bill Bushong



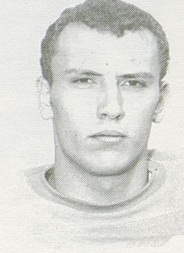
Tom Clark



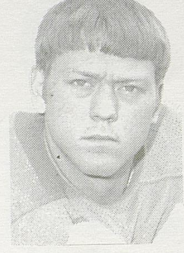
Jack Brown



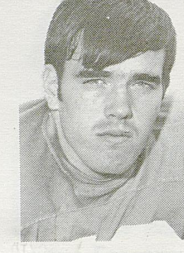
Dave Pursell



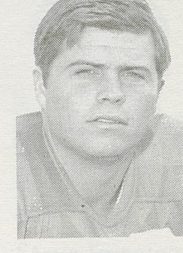
Mike Doggendorf



Tom Crowe



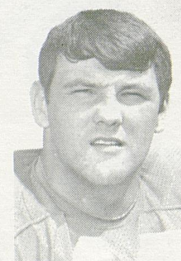
Fred Hamberg



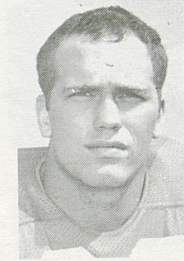
Steve Parrish



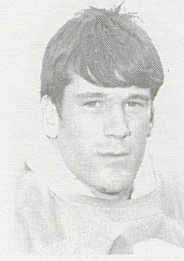
Houston Hogg



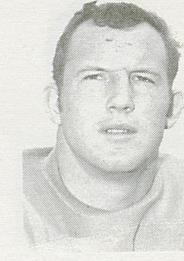
Gayle Goins



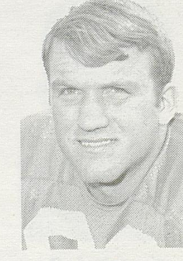
Clint Opheikens



Ken King



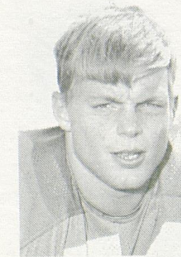
Dave Hardt



Jim Grant



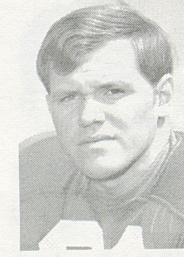
Les Lyons



Pat Eckenrod



Mike Meck



Roger Greer



Winston Gaffron



Jim Hill

**WHAT KENTUCKY  
OPPONENTS  
ARE DOING**

**LOUISIANA STATE (1-1)**

18	Texas A&M (H)	20
24	Rice (H)	0
10/3	Baylor	(H)
10/10	Pacific	(H)
10/17	Kentucky	(H)
10/24	Auburn	(A)
11/7	Alabama	(N)
11/14	Mississippi State	(H)
11/21	Notre Dame	(A)
11/28	Tulane	(A)
12/5	Mississippi	(H)

**NORTH CAROLINA (3-0)**

20	Kentucky (H)	10
19	North Carolina St. (H)	0
53	Maryland (A)	20
10/3	Vanderbilt	(A)
10/10	South Carolina	(H)
10/17	Tulane	(A)
10/24	Wake Forest	(A)
10/31	Virginia	(H)
11/7	VMI	(H)
11/14	Clemson	(A)
11/21	Duke	(H)

**GEORGIA (2-0)**

14	Tulane (A)	17
38	Clemson (H)	0
10/3	Mississippi State	(N)
10/10	Mississippi	(H)
10/17	Vanderbilt	(H)
10/24	Kentucky	(A)
10/31	South Carolina	(H)
11/7	Florida	(N)
11/14	Auburn	(A)
11/28	Georgia Tech	(H)

**KANSAS STATE (1-2)**

37	Utah State (T)	0
3	Kentucky	16
13	Arizona State (A)	35
10/3	Colorado	(H)
10/10	Kansas	(H)
10/17	Iowa State	(A)
10/24	Oklahoma	(A)
10/31	Missouri	(H)
11/7	Oklahoma State	(H)
11/14	Nebraska	(A)
11/21	Florida State	(A)

**N. CAROLINA ST. (0-1-1)**

6	Richmond (A)	21
0	North Carolina (A)	19
7	South Carolina (H)	7
10/3	Florida	(A)
10/10	East Carolina	(H)
10/17	Duke	(H)
10/24	Maryland	(A)
10/31	Kentucky	(A)
11/7	Virginia	(H)
11/14	Wake Forest	(A)
11/21	Tulane	(A)

**MISSISSIPPI (2-0)**

47	Memphis State (A)	13
20	Kentucky (H)	17
10/3	Alabama	(H)
10/10	Georgia	(A)
10/17	Southern Miss.	(H)
10/24	Vanderbilt	(A)
11/7	Houston	(H)
11/14	Chattanooga	(H)
11/28	Mississippi State	(H)
12/5	Louisiana State	(A)

**VANDERBILT (2-1)**

39	Chattanooga (H)	6
52	The Citadel (H)	0
6	Mississippi State (N)	20
10/3	North Carolina	(H)
10/10	Alabama	(A)
10/17	Georgia	(A)
10/24	Mississippi	(H)
10/31	Tulane	(H)
11/7	Kentucky	(A)
11/21	Tampa	(A)
11/28	Tennessee	(H)

**AUBURN (2-0)**

33	Southern Miss. (H)	14
36	Tennessee (N)	23
10/3	Kentucky	(A)
10/10	Clemson	(A)
10/17	Georgia Tech	(H)
10/24	Louisiana State	(H)
10/31	Florida	(A)
11/7	Mississippi State	(N)
11/14	Georgia	(H)
11/28	Alabama	(N)

**FLORIDA (2-1)**

21	Duke (N)	19
34	Mississippi State (H)	13
15	Alabama (A)	46
10/3	North Carolina St.	(H)
10/10	Florida State	(A)
10/17	Richmond	(H)
10/24	Tennessee	(A)
10/31	Auburn	(H)
11/7	Georgia	(N)
11/14	Kentucky	(N)
11/28	Miami	(H)

**UTAH STATE (2-1)**

0	Kansas State (A)	37
33	Bowling Green (H)	14
42	Wyoming (A)	29
10/3	Wichita State	(H)
10/10	Kentucky	(A)
10/24	Brigham Young	(A)
10/31	Colorado State	(A)
11/7	Utah	(H)
11/14	Idaho	(H)
11/21	Memphis State	(A)
11/28	New Mexico State	(A)

**TENNESSEE (1-1)**

28	SMU (H)	3
23	Auburn (N)	36
10/3	Army	(H)
10/10	Georgia Tech	(A)
10/17	Alabama	(H)
10/24	Florida	(H)
10/31	Wake Forest	(N)
11/7	South Carolina	(A)
11/21	Kentucky	(H)
11/28	Vanderbilt	(H)
12/5	UCLA	(A)

Planning to Visit . . . . .  
HAWAII, MEXICO, WEST INDIES, HONG  
KONG, AUSTRALIA, BERMUDA,  
EUROPE, NASSAU, AFRICA, INDIA  
OR ANYWHERE IN THE WIDE,  
WIDE WORLD?

Contact

**ALL-AMERICAN TOURS, Inc.**

*Lexington's Oldest Travel Agency—  
Established 1932*

*Phoenix Hotel Bldg. Telephone 254-5729*

We Have an Attractive Program of Cruises  
and Tours (both escorted and independent)  
to Practically all Parts of the World.

A L S O

**WE SPECIALIZE IN AIRLINE RESERVATIONS  
—FOR BOTH BUSINESS AND PLEASURE**

**CAREY-ADAMS, INC.**

**2216 Young Drive**

**LEXINGTON, KY.**

**Highway and Municipal**

**Construction**

**Since 1906**

## —Athletics At Kentucky—

Kentucky's athletic program, a well-balanced and ambitious activity featuring intercollegiate competition in ten different sports, is organized under the Department of Athletics and a corporation known as the University of Kentucky Athletics Association.

The program is conducted without overemphasis or sacrifice of educational objectives and in strict compliance with the rules of the University, the Southeastern Conference and the National Collegiate Athletic Association.

A board of directors, headed by the President of the University in the capacity of chairman, maintains overall policy supervision of the athletic program. In addition to the UK President, board officers include the Vice-President for Student Affairs as vice-chairman and Dr. W. L. Matthews in the capacity of secretary. Fourteen other men drawn from the University faculty and the general public also serve on the board as appointees of the president as does a student representative.

Supervising the steady growth and balanced

development of the athletic program is Athletic Director Harry C. Lancaster.

The Association's Board of Directors is composed of the following:

Chairman, Dr. Otis A. Singletary  
Vice Chairman, Robert G. Zumwinkle  
Dr. W. L. Matthews, Jr., Secretary  
Dr. Ralph Angelucci  
Dr. Donald Leigh  
Dr. Thomas Brower  
Steve Bright (Student Representative)  
Albert B. Chandler  
Dr. Glen Creech  
Dr. Stephen Diachun  
Dr. Lyman Ginger  
Don Sullivan (K-Men's President)  
Dr. A. D. Kirwan  
Dr. J. L. Massie  
James H. Pence  
Dr. N. J. Pisacano  
Dr. W. C. Royster  
Floyd Wright



**Frisch's**®  
THE ORIGINAL  
**BIG BOY**

2304 Versailles Road  
1927 Harrodsburg Road  
Idle Hour Shopping Center

## **SOUTHLAND SPORT SHOP**

**Distributors of**

*Riddell, Rawlings, Wilson, and Spalding Sporting Goods*

*Adidas Track Shoes      Speedo      Cramer Products*

**Plenty of Free Parking Space**

**Gene Stokley — In The Southland Shopping Center — Dick Wallace**

**P.O. BOX 8251**

**PHONE 277-3977**





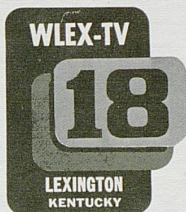
HOW DOES A TELEVISION STATION STAY IN SHAPE?

# KENTUCKY FOOTBALL

## 1970 with

### Coach John Ray

Every Sunday at 7:00PM



At WLEX-TV, we keep in condition with a well-rounded athletic schedule that includes University of Kentucky basketball games . . . NCAA College and Kentucky High School basketball tournaments . . . Kentucky Basketball with Coach Adolph Rupp . . . Kentucky Football with Coach John Ray . . . weekly and post-season AFL professional football . . . the top college football bowl games . . . the entire Cincinnati Reds television schedule . . . the weekly major league game of the week, plus the World Series and All-Star games . . . and special programs covering such endeavors as auto racing, bowling and track and field events.

In total, we schedule many more hours of sports activity annually than either of our rivals.

But of course, even if you never counted our hours on the field, you could tell what kind of shape we're in.

Just look at our wonderful color.

this is **2<sup>nd</sup>** NATIONAL BANK Country . . .

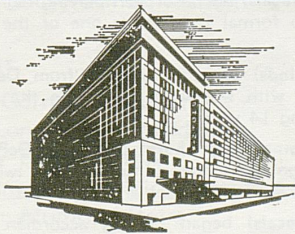
*where are you banking?*

THE SECOND NATIONAL BANK AND TRUST COMPANY

4 Locations

Lexington

254-1161



Kentucky's Convention  
Headquarters  
120 E. Main St.  
Downtown Lexington, Ky.  
Phone 255-3210

*Lexington's Largest and Finest!*

FEATURING FIRE BIRD RESTAURANT and LOUNGE

- FREE PARKING
- BEVERAGE & FREE ICE MACHINE ON EACH GUEST FLOOR
- 100% AIR CONDITIONED
- TV IN ALL ROOMS—COLOR & B & W
- COFFEE SHOP WITH ECONOMICAL PRICES

*A Major Renovation Program Is In Progress*





## "CHICAGO" GROUP APPEARS TONIGHT IN MEMORIAL COLISEUM

The Student Center Board, which has scheduled a concert by the seven-piece "Chicago" band group at 8 o'clock tonight in Memorial Coliseum, is apparently tuned to the ear of the University of Kentucky football team.

The Wildcats, asked to name their favorite musical group, gave Chicago a 13-8 lead over "Three Dog Night."

Next in order were "The Temptations" (7), "Credence Clearwater Revival" and "Rare Earth" (5 each), "Beatles" (4), "Fifth Dimension" and "Blood, Sweat and Tears" (3 each), and "Sly" (2).

Single votes went to "Cold Blood," "Four Tops," "Steve Miller Blues Band," "First Edition," "Crosby, Stills and Nash," "The Association," "Led Zepplin," "The Guess Who," "Box Tops," "Simon and Garfunkel," "Pips," "Archies," "Ten Years After," "Junior Walker and The All Stars," "Jackson Five," "It's A Beautiful Day," and "Who."

The winning group, named for the band's hometown, Chicago, is described as being in the midst of the pop music stream. Chicago is a turbulent blend, incorporating jazz, blues, rock, symphonics and perhaps a half dozen other labels. The group's musical statement is that of seven artists who adhere to a strict rehearsal schedule. They hold writing seminars for themselves. They gather often for discussions relating to performance and material, and talk about achievement and goal as it relates to musical accomplishment.

They also gather within a social framework. The members of Chicago have been together for years and so it is a family as well as a workforce that has been welded.

They went to Los Angeles at the bidding of an old school chum, Jim Guercio . . . a man who had gone to music class with some of them at DePaul University, who had been in one of Dick Clark's

road tour bands with some of them, who after he had been one of the early Mothers of Invention and a hit songwriter for Chad & Jeremy and a Top 10 record producer for The Buckingham's, now wanted them in his "creative community."

The inhabitants of the "creative community":

**DAN SERAPHINE (drums)** studied percussion at DePaul University, then with Chuck Flores, ex-member of Maynard Ferguson and Woody Herman bands. Has been playing for 11 years.

**ROBERT LAMM (organ/electric piano/vocals)** studied piano and composition at Roosevelt University, is one of the prolific writers in the band, has been playing eight years.

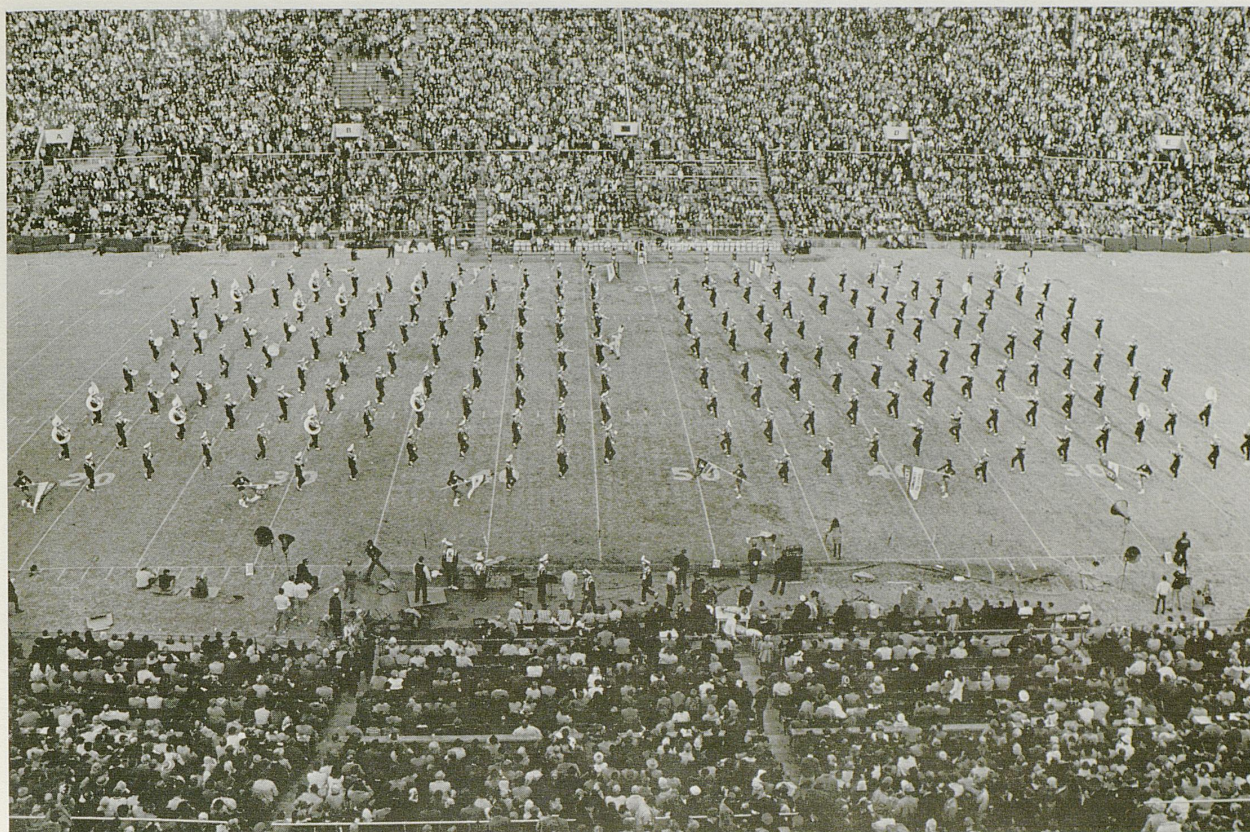
**TERRY KATH (guitar/vocals)** has also been playing eight years, and, although has had no formal training, is one of the prolific writers in Chicago.

**WALT PERRY (woodwinds)** earned a degree from DePaul in orchestra clarinet, studied with woodwind players in the Chicago Symphony, has been playing 14 years.

**LEE LOUGHNANE (trumpet/flugel horn)** studied at DePaul two years, then at the Chicago Conservatory College for two years, played in several local Chicago rock groups and big bands.

**PETE CETERA (bass/vocals)** began playing accordion at 12, worked with several local groups, the last for six years with his city's top rock group.

**JIM PANKOW (trombone)** studied at DePaul and Quincy College, played with the Bobby Christian and Ted Weems orchestras, Bill Russo's Chicago Jazz Ensemble and his own jazz quintet, does much of Chicago's composition and brass arrangements.



## UNIVERSITY OF KENTUCKY "WILDCAT" MARCHING BAND

Wm. Harry Clarke, Director of Bands  
Jack Lowther, Assistant Director  
Robert Wills, Assistant Director  
Brian Gorrell, Drum Major

### Staff

Clyde Gilpin, Librarian  
Allen Young, Equipment Manager  
Tom Tandy, Uniform Chairman

### Officers

Brian Gorrell, President  
Paul Long, Vice President  
for Band History  
William Adams, Vice President  
for Alumni Affairs  
Diana Moore, Vice President  
for Social Affairs  
Nancy Bergsieker, Secretary  
Charles Sayle, Treasurer  
George Cordery, Publicity Chairman

Deliah Hawkins, Feature Twirler  
Nancy Carter, Feature Twirler  
Jane Teater, Head Majorette  
Linda Cox, Head Flagbearer  
Roger Emberton, Announcer

### Announcing the 1970-71 Alumni Scholarship Recipients

Alan Jacobus, Danville, Ky.  
Bobby Sledge, Owensboro, Ky.  
Carroll Wallace, Greenville, Ky.  
Mary Lou Frank, Corydon, Ind.  
Richard Summers, Wheeling, W. Va.  
Jean Hutchinson, Warrenville, Ill.

# MAGNA-GRAPHIC

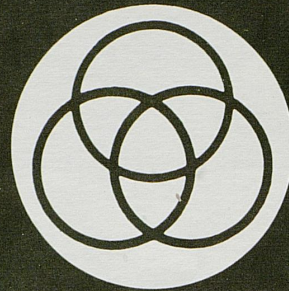
INC.

MANUFACTURERS OF FINE PRINTING PLATES

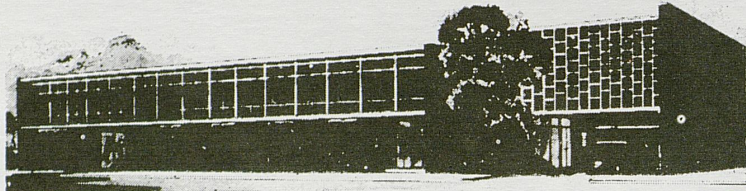
*Offset — Photo-Engravings — Matrices  
Four Color Process Separations*

430 WEST SHORT ST.

LEXINGTON, KY.



## The Downtowner Motor Inn



LEXINGTON'S FINEST — 155 ROOMS — RESTAURANT — COCKTAIL LOUNGE — CONFERENCE ROOMS  
PARK AT YOUR FRONT DOOR — TV — HI-FI — RADIO — PHONES — SWIMMING POOL  
347 EAST MAIN — JUST EAST OF ROSE

**If  
your  
team  
is  
losing**

**read this.**

It might make you feel better to know that Marathon guarantees everything *will* go the way you want when you use their petroleum products and automotive services. Or you'll get your money back.

Incidentally, maybe you'd better stop at a Marathon station after the game.  
It looks like a long ride home.

**If  
your  
team  
is  
winning**

**read this.**

If ever things *don't* go the way you want them to when you're using Marathon petroleum products and automotive services, you'll get your money back.

Incidentally, maybe you'd better stop at a Marathon station after the game.

No sense ruining a beautiful trip home by running out of gas.





- 29 Different Varieties of Pancakes and Waffles
- Steaks, Chops, Chicken Seafood Also Available
- Dine In An Early American Atmosphere
- Informal, Friendly, Courteous Service

MEET YOUR FRIENDS IN THE BLUE ROOM

DIAL — 254-3893

Located On U.S. 27 At 729 South Lime  
Across from University of Kentucky Medical Center

*"Stop In Before and After the Game"*

*All The Way With U. of K.*



BUSINESSMEN'S LIFE INSURANCE COMPANY

144 SOUTHLAND DRIVE    LEXINGTON, KENTUCKY 40503    PHONE 278-2351

*Be A Wildcat Booster*

## UK's Community College System

*An answer to the pressing need  
for higher education in Kentucky*

The University's rapidly expanding Community College System is proving that it can help meet the demands of providing higher education for all of Kentucky.

An American institution, the community college performs several functions traditional to higher education and others uniquely its own. Nationally, the community college movement now includes 1,057 colleges, enrolling more than two million students. This represents nearly one-third of all students presently enrolled in college in the United States.

The reasons for the rapid growth of the community college are many. Foremost is the fact that traditional American colleges and universities cannot adequately meet the challenge of providing higher education for the increasing numbers of young people seeking this opportunity.

Furthermore, traditional institutions cannot meet the manpower needs at the semi-professional or technical level, which approach 200,000 annually.

Thus, it is natural that these comprehensive community colleges have been developed in the Commonwealth to serve a three-fold purpose: (1) to provide the first two years of baccalaureate programs; (2) to offer two-year vocational or career oriented programs; and (3) to offer continuing and adult educational opportunities.

Acceptance of this highly successful system of education is portrayed through the greater number of degrees granted. This year there were nearly 45 per cent more diplomas handed to graduates than in 1969. The number of certificates (conferred to students expected to

transfer to a four-year institution for study toward a baccalaureate degree) increased over 1969 by 23 per cent.

Kentucky's community colleges have brought the opportunity for a higher education close to students throughout the state. In many cases, the community college is less than a two-hour drive from the Kentucky resident's home.

Local communities are finding community colleges an asset. New life is breathed into these communities with cultural, social and educational offerings once confined to metropolitan areas. The community college movement has also helped increase the amount of new business and industrial potential throughout the state.

We feel that we have one of the best organized community college systems in the country," says Dr. Stanley Wall, vice president of the UK Community College System.

"Our close ties to the University provide many advantages not found in other organizational patterns. Through a close working relationship with the Bureau of Vocational Education and the State Department of Education, the colleges are given opportunity to strengthen their career education programs in line with the provisions of the 1968 Vocational Acts," he says.

"Although each community college is an integral part of the University of Kentucky, it still relates itself to a particular community through its local advisory board and its technical program," Dr. Wall points out. "And here is where real opportunity lies. The demand for highly trained semi-professional persons is the greatest in the history of our nation."

---

Dr. Stanley Wall, a native Kentuckian widely known in the field of education throughout the state and nation, is the new vice president for the Community College System. He replaces Dr. Ellis Hartford who retired July 1.

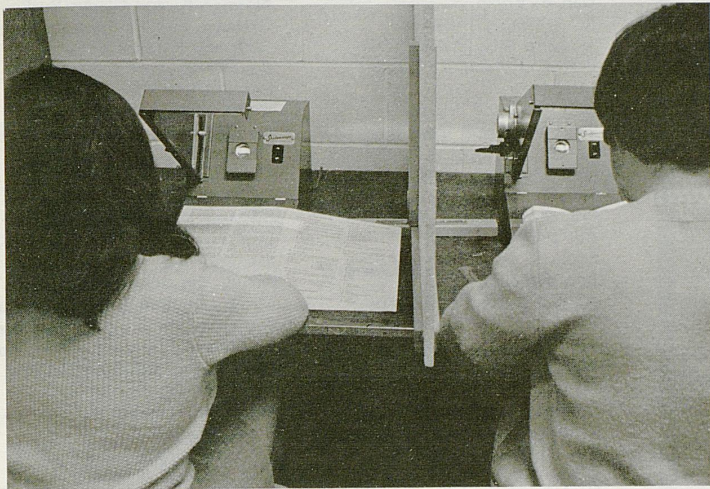
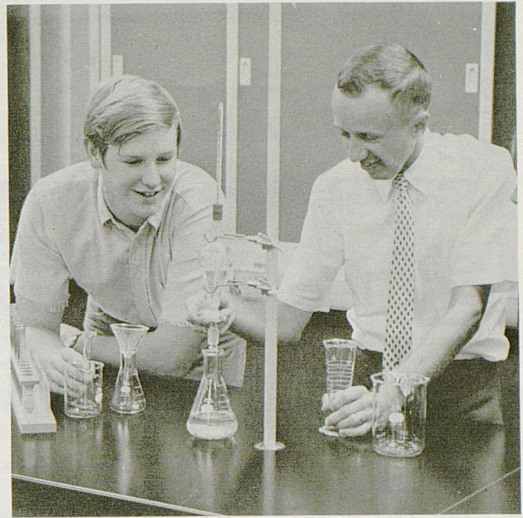
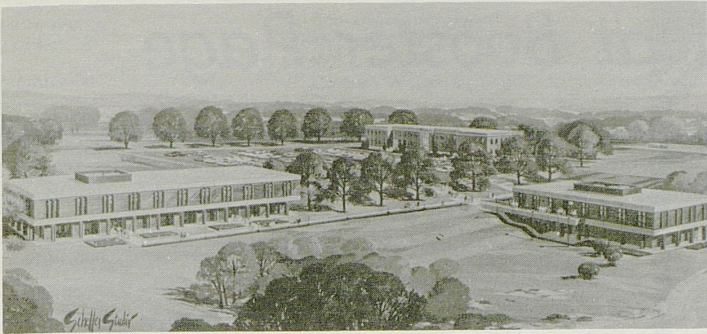


Dr. Wall

Dr. Wall began his career in 1938 as a vocational agriculture teacher in Garrard County. Shortly after World War II he joined the vocational education department in the College of Education, and was named associate dean in the College of Agriculture in 1956. Dr. Wall has been associate dean

of the Community College System since November 1966, and has been instrumental in the development of the highly successful educational programs carried out by UK's 13 organized community colleges.

Both his advanced degrees, the M.S. and Ed.D., were earned at UK. Dr. Wall and his wife, the former Ruby Hamm, are the parents of five children.

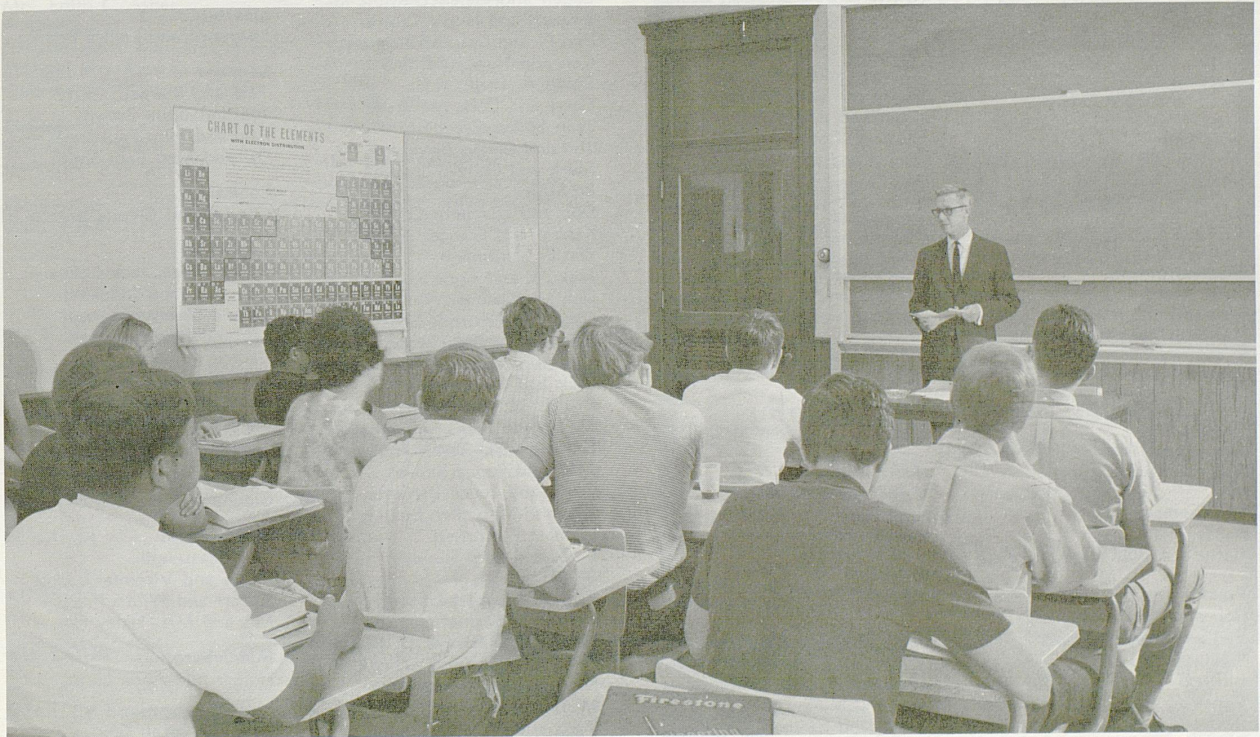


Top Left: Architectural drawing of Henderson Community College.

Above: Science laboratory session at Maysville Community College.

Left: Students at Elizabethtown develop reading speed through use of the "Shadowscope."

Below: Classroom instruction at Jefferson Community College, Louisville.





# Wildcat Booster Page

This page, sponsored by the Lexington Wildcat Club, was made possible by donations from the persons listed. Your name may be added in the upcoming programs by sending \$5 to: The Lexington Wildcat Club, 1236 Versailles Road, Lexington, Ky. 40508.

**Ashland:**

Dr. and Mrs. John Harrison  
David D. Payne  
Charlene and Will Ed Covington  
Virgil and Edna Lewis Watson  
Edgel and Nina Moore  
Wheeler Nickell  
Mr. and Mrs. Hobert Hern, Jr.

**Bourbourville:**

Charles and Dora Ann Buchanan

**Bardstown:**

Gus and Kitty Wilson

**Bellevue:**

Mr. and Mrs. Richard S. Schulte

**Berea:**

J. C. and Viola Ray

**Bloomfield:**

Ace and June Dawson

**Bowling Green:**

J. David Francis

**Campbellsville:**

Mr. and Mrs. Fern Settle

**Carlisle:**

Charles and Phyllis Cox

**Corbin:**

Keith and Betty Smith

**Cynthiana:**

Mr. and Mrs. Herbert Moore  
John E. Owsley

**Danville:**

Beverly and Harold Lawhorn

**Elizabethtown:**

R. B. Mobley  
Ray and Helen Jenkins  
Dee and Jean Huddleston

**Elsmere:**

James E. Wainscott

**Florence:**

Russ and Shirley Wilmhoff  
Bill and Ruth Tupman

**Ft. Thomas:**

Vince Chalk  
Betty and Bob Bugie

**Frankfort:**

Bob and Ann Insko  
Earl and Marianna Senff  
William H. Teater  
Bill and Vivian Northrup  
James E. and Christine Lockett  
Redwood and June Taylor  
Tom and Mary Lou Schneider

Milly and John Stewart  
T. A. and Lula M. Pardue  
Charlie and Ann Pewitt  
Jim and Mary Morris  
Mr. and Mrs. R. C. Howard

**Franklin:**

R. W. "Red" Madison

**Fulton:**

Ward and Sara Bushart  
David and Donna Homra  
Alfred Bushart

**Georgetown:**

Bill and Sally Hays  
John and Norma Fitch  
Mr. and Mrs. Cecil D. Bell

**Grayson:**

Jack W. and Edith Strother  
Mr. and Mrs. Bill Cochran

**Harlan:**

Louis and Jean Green

**Harrodsburg:**

Elizabeth and Aggie Sale  
Mr. and Mrs. Quentin Gaskin  
Mr. and Mrs. Orville Bowman

**Hazard:**

Donna and Oscar Combs  
Gene and Katy Combs  
Tom and Alta Johnson  
Joe and Coteal Mellott  
Eloise and Bill Sturgill  
Willie and Sadie Dawahare

**Henderson:**

"Nib" and Beverly King

**Hopkinsville:**

George and Dorothy Asher  
Bill and Helen Deatherage

**La Grange:**

Bill and Dottie Dawson

**Lancaster:**

James and Jo Ann McCulley

**Lawrenceburg:**

Ernie and Nete Ripy  
Lewis and Helen Bishop  
Mr. and Mrs. Marvin Edwards

**Lebanon:**

Chester and Ophelia Abell

**Lexington:**

Emmet and Rebecca Milward  
Bob and Eleanor Milward  
Bill and Mary Faulkner  
Louis and Sarah McGinnis  
Steve and Tiny Rardin

Hugh and Mary Eblen  
Jane and Henry Newman  
Dan B. Bryan  
R. Arnspiger Insurance  
Mr. and Mrs. Frank Pieratt  
Fred and Mabel R. Perkins  
Mrs. Howard Wells  
Bob and Lyda Bryant  
Jean and Ralph Congleton  
Luther and Eleanor Chappell  
Mrs. Charles C. Patrick, Jr.  
Franklin E. Loy  
Frances M. Laval  
Bill and Betty Scott  
Louis R. and Frances Ades  
Bob and Lula Lutes  
Arch and Rosalie Mainous  
Frank and Lucille Atkins  
Bob R. and Sara Cathers  
Frances and John Reed  
Mr. & Mrs. Leonard G. Cox, Jr.  
Steve J. Banahan  
Warren and Billye Roberts  
Chuck and Nancy Starr  
Leroy and Jimmy Turner  
W. Warner and Christyne Ford  
Logan and Helen Gray  
Emmett and Nonie Crump  
Ben P. and Dorothy Bransom  
Ken and Nancy Perkins  
David A. Hull, M.D.  
Gerry and Doris McGinnis  
Jean Stokes Breeding  
Jim and Gladys Broadus  
Mark and Geneva Sharee  
Ed Miller  
Don and Elizabeth Cooper  
Kenzie and Frances Jones  
Ben C. Kaufmann  
Jack M. and Anne Reeder  
Don and Delores Whitaker  
Gene and Gertrude Sageser  
Bob and Virginia Swope  
Pete and Margaret Powell  
Dick and Palina Hurst  
Dr. G. Richard Baker  
Marth and Louis Hillenmeyer  
Dr. and Mrs. Roy Holsclaw  
J. D. and Peggy Reeves  
Cavin and Joyce Barnette  
Bux and Maryellen Buxton  
William F. Cornett  
L. C. and Edna Redmon  
Bill Fraley  
Ruth and Robert Larson  
Delbert and Janet Justice  
Dr. & Mrs. Jerome D. Hopkins  
Dr. and Mrs. Terry Schneider  
Mr. and Mrs. Fred Taylor  
Mr. and Mrs. Tom C. Hopkins  
Doris and Russell Rice  
David and Peggy Noyes

L. B. and Elaine Halfhill  
Dan and Mary Long  
Norman K. and Gladys Burke  
Clarence and Edith Underwood  
Jack and Barbara Perry  
David and Dana T. Norris  
Les and Edith Reynolds  
Vivian and Charlie Billips  
Leroy and Herma Lee LeMaster  
Frank and Viola Seale  
Mr. and Mrs. Merritt Wimarrs  
Dr. and Mrs. Paul G. Kyker Jr.  
Bill and Jean Sparks  
Dan V. and Mary G. Terrell Jr.  
Mr. and Mrs. Victor Fox  
Mr. & Mrs. Vincent Spagnuolo  
Mr. & Mrs. Robert W. Rynierison  
National Life & Equity Services  
Physicians Planning Serv. Corp.  
Nat'l Assoc. Resident Interns  
Equity Funding Corp. of Amer.  
American Professional Practice  
Association  
Jamerson Jones  
Ted and Evelyn Bates  
Mr. & Mrs. Wm. H. Wheeler

**Liberty:**

Lawrence and Louise Brock

**London:**

Tom and Marbeth Craft  
Joe and Billie Brown  
Ann and John Paul Jones  
Dr. and Mrs. Paul Smith

**Louisa:**

Charles and Glenda Britton III

**Louisville:**

Dr. and Mrs. Jack Colley  
Bob and Jane Johnston  
Ed and Marcy Hasenour  
Leo and Jane Broecker  
George P. Garey  
S. H. Booker  
Mary and Tony Dishman  
Hans and Fern Bender  
Lawrence F. Schulten

**Madisonville:**

Glenna and Bill Corum

**Middlesboro:**

Tom Massengill  
Ralph and Virginia Tucker  
Robert and Wilma Page  
Mr. and Mrs. Harry Hoe

**Middleburg:**

Homer and Anna Short

**Midway:**

Bert and Susan Cox  
Nuckols Bros.



**Millersburg:**  
Zed Layson

**Monticello:**  
Dave and Jeanne Bassett

**Mt. Sterling:**  
Frank and Carmie Sewell  
"Ovey" and Madge Evans  
Gene and Anne Hilan

**Munfordville:**  
Chester and Olivia Stewart

**Newport:**  
H. Gilbert and Louise Brinkman

**Nicholasville:**  
Dr. and Mrs. J. S. Williams  
Kate Woods

**Owensboro:**  
Mr. and Mrs. Wendell Ford  
Anne B. and Marshall Barnes

**Paducah:**  
Dwain and Mildred Lowry

**Paintsville:**  
Bill and Mary Grace Garland  
Harry and Maxie LaViers  
Mr. and Mrs. "Chick" Carroll  
Bob and Esther Meade  
Jerry and Mary Fraim

**Paris:**  
Mr. & Mrs. A. B. Hancock, Jr.  
Mr. and Mrs. Jack G. Tucker

**Pikeville:**  
Perry A. and Jean Justice  
Norman and Lorraine Chrisman

**Pineville:**  
Mrs. Edith L. Asher

**Prestonsburg:**  
Dr. George & Margaret Archer  
Mr. and Mrs. Paul C. Combs  
Chalmer and Kathryn Frazier

**Richmond:**  
Warfield Z. Miller  
David and Kay Smith

**Shelbyville:**  
Louis Ruben

Bob and Jean Logan  
Mr. and Mrs. R. M. Walters  
Willis and Mary E. McKee  
Colonel Walter B. Smith

**Simpsonville:**  
Allen and Ann Purnell

**Somerset:**  
W. J. and Lillian Moore  
Robert Strunk II

**Springfield:**  
Charlie and Margaret Haydon

**Tompkinsville:**  
Dr. and Mrs. Wendell F. Hurt

**Versailles:**  
Alma and Louis Lee Haggin II  
John and Dorothy Willmott  
G. Reginald & Ethelwyn L. Riley  
L. D. and Helen Sweazy  
Herbert K. Stevens

**Wallins Creek:**  
"Big Jim" Howard  
Bill K. and Edna Howard

**West Liberty:**  
Russell and Estelle Brown

**Williamsburg:**  
Henry L. and Jennie Barton

**Winchester:**  
Nick and Peggy Nicholson  
John and Eradeon Callaway

**Cincinnati, Ohio:**  
Jane and Jack Becker  
Dale and Shirley McKibben

**Dayton, Ohio:**  
Sam and Hazel Ruark

**Pittsburgh, Pa.:**  
Muriel and George Levy

**Norwalk, Ohio:**  
Frank and Chris Cornwell

**Also From Lexington:**  
Bob and Eleanor Featherston  
Mr. and Mrs. Robert K. Jones  
Lewis and Betty Evans

PUT MORE

SIZZLE

IN YOUR LIFE

T-Bone ..... \$2.49

Sirloin ..... \$1.79

Rib-Eye ..... \$1.29

Chopped Sirloin .. \$1.29

Sizzling and served with  
baked potato, tossed  
salad, hot buttered roll.



**PONDEROSA**  
STEAK HOUSE

"The Finest and Most  
Reasonably Priced Steaks  
in Town"

286 SOUTHLAND DR.

Open 11 A.M. to 9 P.M. Daily, Fri. and Sat. to 10 P.M.

Please add the following name(s) to future UK Football Programs:

NAME(S) .....

ADDRESS .....

ZIP CODE .....

(Mail to Lexington Wildcat Club, 1236 Versailles Road,  
Lexington, Ky. 40508)



**K-OFFICERS**—Leading the K-Men's Association this year are (left to right) vice presidents Kenny Rollins and Claude Hammond, president Don Sullivan and secretary-treasurer Norris Flynn. John Griggs is also a vice president.

## AN ACTIVE ORGANIZATION GROWING BY LEAPS AND BOUNDS

One of the fastest growing and most closely knit organizations on the Lexington sports scene is the K-Men's Association, which in eight years has established itself as a community minded organization with interests beyond the athletic scene.

Consisting of alumni varsity lettermen at the University of Kentucky, the organization each year sponsors four academic scholarships, at a total outlay of \$4,000 per year, for needy but worthy students.

A recent activity, made possible by the influence of Wildcat basketball coach and K-Life Member Adolph Rupp, saw the K-Men bring to Memorial Coliseum the Lawrence Welk Show, which played before a huge and enthusiastic crowd.

An upcoming project is the "Dollar for Scholar" football game between the Wildcat and Marshall freshmen at 4 p.m. Oct. 16 on Stoll Field. Proceeds will go into the scholarship fund, which also

benefits from a pre-season Wildcat intrasquad basketball game in the Coliseum.

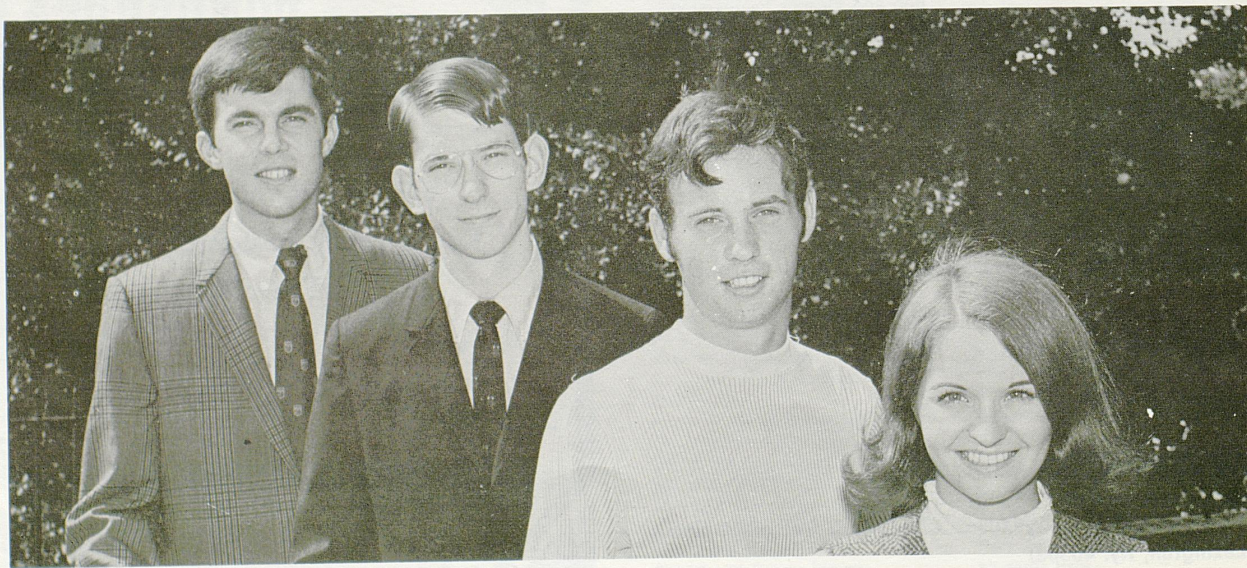
• The most recent recipient of the K-Men's Scholarship is Clemon Clifton Garrison, a son of Mr. and Mrs. Clemon Garrison of Somerset.

Mr. Garrison Sr. is a forestry aide for the U.S. Department of Agriculture. There are five younger children at home.

The scholarship recipient ranked first in a class of 133 at Pulaski County High School, where he posted a perfect 4.0 standing. His composite score on the ACT was 30, putting him in the top 10 per cent of the seniors who took the test throughout the country.

At Pulaski High, Garrison was a National Merit Semi-finalist, a member of the National Honor Society, recipient of an Outstanding Teenager of America award and a star student.

**REAPING BENEFITS**—Attending the University of Kentucky on scholarships provided by the K-Men's Association are (left to right) Danny J. Basil, Glasgow, James Wigginton, Louisville, Clemon Garrison, Somerset, and Carolyn Shain, Cox's Creek.



## 1970 KENTUCKY FOOTBALL SIGNEES

Name	Pos.	Ht.	Wt.	Hometown	Name	Pos.	Ht.	Wt.	Hometown
Paul Alaman	T-G	6-1	225	North Wales, Pa.	Jim McCollum	T-G	6-2	260	Louisville, Ky.
Richard Allen	T-G	6-3	226	Loveland, Ohio	John McHale	QB	6-0	190	Dayton, Ohio
Jack Alvarez	QB	6-2	185	Lewisburg, W. Va.	Dave Margavage	C	6-4	245	Schuylkill Haven, Pa.
Steve Ault	LB	6-1	200	Xenia, Ohio	Marty Marks	FB	6-0	205	Louisville, Ky.
Ray Barga	FB	6-2	200	Lima, Ohio	Tim Meagher	T-G	6-2	190	Louisville, Ky.
Bill Bauer	E	6-3	200	Louisville, Ky.	Tony Moffett	T-G	6-4	232	LaGrange, Ky.
Dan Berger	E	6-1	180	Kettering, Ohio	Jerry Parks	HB	6-1	180	Cincinnati, Ohio
Mark Campbell	HB	5-11	200	Monroeville, Pa.	Mike Potter	HB	5-10	185	Elkhorn City, Ky.
Mark Conway	T-G	6-4	220	Kettering, Ohio	Tom Rocco	QB	6-1	180	Cos Cob, Conn.
John Duley	HB	6-2	180	Ocala, Fla.	Tim Saylor	QB	6-1	200	Harlan, Ky.
Tom Ehlers	QB	6-2	190	South Bend, Ind.	Ron Sciarro	QB	6-3	195	Beaver Falls, Pa.
Michael Fanuzzi	QB	6-1	175	Hasbrouck Hts., N. J.	Paul Sponheimer	LB	6-2	215	Seymour, Conn.
Mike Foster	T-G	6-5	220	Lewisburg, W. Va.	Ron Steele	E	6-3	200	Louisville, Ky.
Eddie Duncan	HB	6-2	190	Owensboro, Ky.	Elmore Stephens	LB	6-4	225	Louisville, Ky.
Steve Green	E	6-2	190	Louisville, Ky.	Terry Sullivan	LB	6-2	205	Louisville, Ky.
Jim Hovey	E	6-3	210	Louisville, Ky.	Harvey Sword	T-G	6-4	220	Massillon, Ohio
Doug Kotar	HB	5-10	185	Muse, Pa.	Robert Kent Vail	E	6-2	190	Fairfield, Ohio
Peter Kunk	LB	6-2	205	Springfield, Ohio	Bruce Wohlleb	QB	6-2	185	Miami, Fla.
Frank LeMaster	HB	6-2	180	Lexington, Ky.	Jeff Woodcock	QB	6-1	175	Nashville, Tenn.

## WILDCAT PRINT BOOSTS UK ATHLETICS

The University of Kentucky Athletics Association to date has received more than \$20,000 from sale of Gene Gray's print of the "Kentucky Wildcat," published by Animal Graphics, Inc.

The "Wildcat" (*Lynx rufus*) was released in an edition print limited to 3,500 copies signed by Gray. Three thousand of the prints were placed on sale through the company's normal channels of distribution, which includes dealers throughout Kentucky, Ohio and Tennessee.

Animal Graphics issued the remaining 500 prints in a special series entitled "Kentucky Wildcat" and signed by UK athletic director Harry C. Lancaster, football coach John Ray and basketball coach Adolph Rupp. These prints are being sold for \$100 each and the entire proceeds donated to the UK Athletic Department.

First Security National Bank & Trust Co. is acting as trustee of the funds and has made prints available through its main office, branches and correspondent banks throughout the state.

Each purchaser of a print receives a certificate of guarantee that the "Kentucky Wildcat" print is one of only 500 reproduced exactly the same size as the original painting and that the entire proceeds from the sale of these 500 prints go to the UK Athletic Department.



SIGNING TIME—Kentucky basketball coach Adolph Rupp (left), athletic director Harry C. Lancaster and football coach John Ray pose pen in hand while wildlife artist Gene Gray witnesses the signing of an original "Kentucky Wildcat" print.

**YOU ALWAYS DO BETTER AT *Sleepy-Head House***

Lexington's largest furniture store "Where People Shop for Quality and Don't Mind Paying a Little Less." Sleepy-Head House, Main at Broadway, Phone: 254-7357. The retail division of Southern Bedding Co., Inc. The home of the famous Zephyr Mattress.

**Main At Broadway — Phone 254-7357**

*Hear . . .*

**KENTUCKY FOOTBALL  
with Coach John Ray**



**BROUGHT TO YOU BY:**

**HOMELITE CHAIN SAWS**

**FISCHER PACKING COMPANY**

**AMERICAN DAIRY ASSOCIATION OF KENTUCKY**

30-minutes before and 10-minutes after every Wildcat game, plus a mid-week show, over one of the following stations:

WCMI—Ashland  
WBRT—Bardstown  
WKDZ—Cadiz  
WCTT—Corbin  
WHKK—Erlanger  
WFKY—Frankfort  
WFKN—Franklin  
WHBN—Harrodsburg  
WKIC—Hazard  
WHOP—Hopkinsville  
WVLK—Lexington

WHAS—Louisville  
WFMW—Madisonville  
WMST—Mt. Sterling  
WOMI—Owensboro  
WSIP—Paintsville  
WPDE—Paris  
WPKE—Pikeville  
WDOC—Prestonsburg  
WPKY—Princeton  
WSFC—Somerset  
WTCW—Whitesburg

WAFI—Middlesboro  
WLKS—West Liberty  
WIEL—Elizabethtown  
WFTM—Maysville  
WLSD—Big Stone Gap, Va.  
WLBJ—Bowling Green  
WHIR—Danville  
WCYN—Cynthiana  
WLBN—Lebanon  
WDXR—Paducah

*Check Your Local Station Listing*

# OFFICIALS' SIGNALS

1  Offside (Infraction of scrimmage or free kick formation)	2  Illegal Procedure or Position	3  Illegal Motion	4  Illegal Shift	15  Ineligible Receiver Down Field on Pass	16  Ball Illegally Touched, Kicked, or Batted	17  Incomplete Forward Pass, Penalty Declined, No Play, or No Score
5  Substitution Infractions	6  Delay of Game	7  Personal Foul	18  Helping the Runner, or Interlocked Interference	19  Ball Dead; If Hand is Moved from Side to Side: Touchback	20  Touchdown or Field Goal	21  Safety
8  Clipping	9  Roughing the Kicker or Holder	10  Non-contact Fouls	22  Time out; Referee's Discretionary or Excess Time Out followed with tapping hands on chest.	23  First Down	24  Ball Ready for Play	
11  Illegal use of Hands and Arms	12  Intentional Grounding	13  Illegally Passing or Handing Ball Forward	14  Forward Pass or Kick Catching Interference	25  Start the Clock	26  Loss of Down	27  Player Disqualified



## SUMMARY OF PENALTIES



(Includes Only Most Common Penalties)

**LOSS OF DOWN**—Forward pass illegally touched • \*Illegal forward pass by offense • \*Intentionally grounding forward pass • \*\*Offensive pass interference

**LOSS OF 5 YARDS**—Delay of game • Exceeding 25-second count • Excess time out • Failure to pause full second in shift • False start • Free kick out of bounds • Illegal forward pass • Infraction of substitution rules • Interference with opponents or ball preceding snap • Offense illegally in motion at snap • Offside • Snapper's position and ball adjustment • Taking more than 2 steps after fair catch • Infraction of scrimmage formation

**LOSS OF 15 YARDS**—Delay of game at start of half • Butting with helmet or head • Clipping • Defense disconcerting signals • Failure to return ball to official after score • Grasping face mask of opponent • Illegal use of hands • Ineligible receiver downfield • Piling on • Roughing the kicker or holder • Tackling or blocking fair catcher • Tackling out of bounds after ball is dead • Unsportsmanlike conduct (non-contact foul) • Unnecessary roughness (kicking, kneeling, tripping, etc.)

**LOSS OF HALF DISTANCE TO GOAL LINE**—If penalty exceeds half the distance to goal

**OFFENSE FIRST DOWN ON 1-YARD LINE**—Defensive pass interference in end zone • Defensive foul behind goal line on running play.

**PLAYER DISQUALIFIED**—Striking with a fist, extended forearm, elbow or locked hands • Flagrant player fouls

\*Plus 5 yards  
\*\*Plus 15 yards

**OFFENDED TEAM'S BALL AT SPOT OF FOUL**—Defensive pass interference • Illegally batting or kicking free ball • Player fouls when ball is free

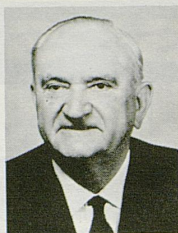
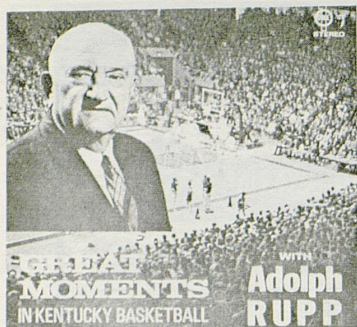
**VIOLATION, BUT NO PENALTY** (Does not offset penalty by opponent)—First touching of free kick by kicking team before ball travels 10 yards • First touching of scrimmage kick by kicking team beyond the neutral zone

### COLLEGIATE COMMISSIONERS ASSOCIATION

Early in 1939 five college football commissioners established an organization for the purpose of attacking mutual problems. From that small beginning has grown what is now the Collegiate Commissioners Association, its members the chief executive officers and their assistants from the eleven major college conferences from coast to coast. Representing nearly 300 institutions, they range in size from the seven-member Mid-American Conference to the mammoth 190-member Eastern College Athletic Conference.

The CCA's field of interest has broadened greatly since its inception, now encompassing not only football, but all sports on the collegiate program. The members as such give united attention not alone to officiating assignment and rules interpretation, but also to procedures on undergraduate athletic recruitment and eligibility and to the many other facets of intercollegiate sports administration.

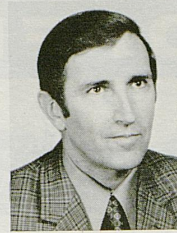
THIS PAGE COURTESY OF COLLEGIATE COMMISSIONERS ASSOCIATION



ADOLPH RUPP



JOE B. HALL



T. L. PLAIN

## "WINNINGEST" COACH IN 41ST YEAR HERE

Adolph F. Rupp, president of the National Association of Basketball Coaches, begins his 41st season at the University of Kentucky with a fine corps of lettermen and a high national pre-season ranking.

Rupp, the nation's winningest coach, with 836 victories in 1,013 games at Kentucky, will be without the services of All-America center Dan Issel and All-SEC forward Mike Pratt, but the return of Mike Casey, All-SEC guard who missed last season because of an auto accident brightens the picture.

Other returnees include Larry Steele, a two-year starter at forward before receiving a wrist injury midway of the 1970 season; Tom Parker, SEC sophomore of the Year after replacing roommate Steele; senior guards Jim Dinwiddie and Terry Mills and juniors Kent Hollenbeck and Stan Key; and junior center Mark Soderberg. Jim Andrews, 6-11, moves up from a high-scoring freshman season, along with forwards Dan Perry and Larry Stamper and guards Steve Penhorwood and Doug Flynn. Tom Payne, 7-foot sophomore, also will be eligible for competition.

• **ADOLPH RUPP**—I have heard "Great Moments" many times and every time it gives me additional thrills. You will never realize the great memories that are recorded for you in this record and I believe everyone will get tremendous thrills in reliving these great evenings.

• **CAWOOD LEDFORD**—There were no notes or lists of questions. The only thing we had was a list of game tapes which were coming up next. Rupp didn't have a single note, and yet he was right every time.

• **JOE CALDWELL**, Sports Reporter—The idea for the record originated nearly a year ago and it has taken a dozen people 10 months to put it together. It has been done by the Committee of 101 not because the Committee wanted a money-making project for this year, but just a basketball related project to concentrate on. Now it looks as if they have struck a gold mine.

• **MIKE MERSCH**, Ky. Post & Times Star—The record is an invaluable page in history. It captures the highlights and the disappointments of a career that may never be equaled.

Yours for only \$5.00 plus 50c for postage and handling.

Order Your Copy from:  
THE COMMITTEE OF 101  
P. O. BOX 22  
LEXINGTON, KY.

### VARSITY SCHEDULE

Date	Opponent	Site
<b>1970</b>		
Dec. 1	Northwestern	Away
Dec. 5	Michigan	Home
Dec. 7	West Virginia	Away
Dec. 12	Indiana	Away
Dec. 18-19	UK Invitational Tournament (Kansas State, Purdue, De Paul, Ky.)	
Dec. 22	Oregon State	Home
Dec. 29	Notre Dame	Louisville
<b>1971</b>		
Jan. 2	Ole Miss	Away
Jan. 4	Mississippi State	Away
Jan. 9	Florida	Home
Jan. 11	Georgia	Home
Jan. 16	Tennessee	Away
Jan. 23	Louisiana State	Away
Jan. 25	Alabama	Away
Jan. 30	Vanderbilt	Home
Feb. 1	Auburn	Home
Feb. 6	Ole Miss	Home
Feb. 8	Mississippi State	Home
Feb. 13	Florida	Away
Feb. 15	Georgia	Away
Feb. 20	Louisiana State	Home
Feb. 22	Alabama	Home
Feb. 27	Vanderbilt	Away
Mar. 1	Auburn	Away
Mar. 6	Tennessee	Home

### FRESHMAN SCHEDULE

Date	Opponent	Site
<b>1970</b>		
Dec. 5	Miami (Ohio)	Home
Dec. 15	UK Dental School	Home
Dec. 29	Lexington AAU (Freedom Hall, Louisville)	Neutral
<b>1971</b>		
Jan. 4	Cincinnati	Away
Jan. 9	Florida	Home
Jan. 11	Georgia	Home
Jan. 16	Tennessee	Away
Jan. 23	Louisiana State	Away
Jan. 25	Alabama	Away
Jan. 30	Vanderbilt	Home
Feb. 1	Auburn	Home
Feb. 6	Spencerian	Home
Feb. 8	Lexington AAU	Home
Feb. 13	Florida	Away
Feb. 15	Georgia	Away
Feb. 20	Louisiana State	Home
Feb. 22	Alabama	Home
Feb. 27	Vanderbilt	Away
Mar. 1	Auburn	Away
Mar. 6	Tennessee	Home

THE WILDCAT BASKETBALL FACTS BOOK, with records almost completely rewritten by Dan Issel, Mike Pratt and the '70 squad, is being offered to the public again this year. The cover is a color picture of Coach Adolph Rupp and trophies won during the past season. Here's how to order:

(Cut Along This Line)

NAME .....

ADDRESS ..... Zip .....

Enclosed is my remittance in the amount of \$..... for:

.....copy(ies) of 1970 BASKETBALL FACTS: \$1.50 plus (25c each 3rd Class; 50c First Class)

Please make remittance payable to—

SPORTS PUBLICATIONS, Memorial Coliseum, Lexington, Ky. 40506

# Cawood Ledford calls all the UK Football action on WHAS radio 84



## **The Coach John Ray Show**

30 minutes before kick off, LINCOLN INCOME LIFE INSURANCE COMPANY sponsors a 15 minute special interview with UK Coach Ray. Then, 10 minutes after the game, Cawood and Coach Ray meet again for a 15 minute action recap.

## **The Entire UK Football Schedule**

Every exciting minute of UK football action is broadcast by WHAS Radio 84 sponsored by EAST KENTUCKY RURAL ELECTRIC COOPERATIVE and TEXACO. Many UK fans follow the action with a small portable tuned to WHAS while watching from their stadium seat . . . and of course, they dial Radio 84 when they can't make the scene!

## **The Football Scoreboard**

Immediately following the game PHILIP MORRIS brings you up-to-the-second scores of the nation's top contests.

## **S.E.C. Football**

A dozen of the hottest S.E.C. battles every Saturday.

## **The Midweek Coach John Ray Show**

Each Wednesday at 6:15 p.m. Cawood talks with the Wildcat Coach about UK gridiron fortunes and strategy.

**WHAS!**

**River City Radio 84**

# CHEVY'S NEW LITTLE CAR IS OPEN FOR BUSINESS.

Vega 2300 is here at last.

We'd have brought it out sooner, but you know how it is. We've got a lot riding on this little car and we wanted it to be right, really right, before turning it over to you.

Now we're ready.

And you were wise to wait.

Because now you can buy what we at Chevrolet have come to modestly believe is the best little car in the world.

We don't expect this ad to convince you.

We expect the car to, though.

Vega. The little car that does everything well. Look into it.

