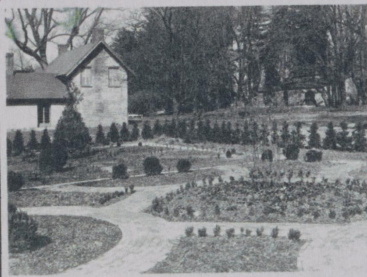




In 1950, the Henry Clay Memorial Foundation asked the Garden Club of Lexington to create a public garden at Ashland. The garden at that time was in neglect and none of the plans for the Clays' original garden remained. It was thought to be a typical old-fashioned "kitchen" garden, bordered by flowers, lilacs and Mr. Clay's favorite Luxembourg rose. The existing sundial in the garden is from the Ashland garden of Henry Clay's granddaughter, Anne Clay McDowell. Landscape Architect Henry F. Kenney of Cincinnati drew up a plan for the half acre, formal garden.



Club members work weekly April through October maintaining the gardens. Outside the garden gates, the work includes adopting trees, eradicating invasive honeysuckle and euonymus, and the recovery of Running Buffalo Clover.

In 1986, a second garden was established on the grounds for the Saunders hybrid peonies, given in memory of Mrs. Richard (Alice McIlvain) Prewitt. This special collection, were the result of the work of Dr. A.P. Saunders, often called "the father of the modern hybrid peony". The garden has 42 varieties.

In 2015, an additional garden for a Monarch Butterfly way station was cultivated.

- Historic Preservation Award from the city for excellent stewardship
- Kentucky Coffeetree Project. Seeds are gathered by members from the two female Coffeetrees at Ashland and taken with materials for propagation to area elementary students. In 2016, there were over 1500 students at thirteen schools.
- Bouquets to Brighten your Day. Delivering individual, garden arrangements to residents of local Nursing Homes



MEMORIALS:

1951 Mrs. W.C. (Martha Hume) Lawwill

1998 James Mason *Seurat-esque* Topiaries in honor of Dorothy Crutcher's 80th Birthday

Crutcher Kousa Dogwood *Alee established*

2011 Hornbeams dedicated in memory of Katie Jackson Morrison and her children, Wyatt and Hannah

2015 Dedication of bench in memory of GCL member Wende Bell by the Friends and Flower Garden Club



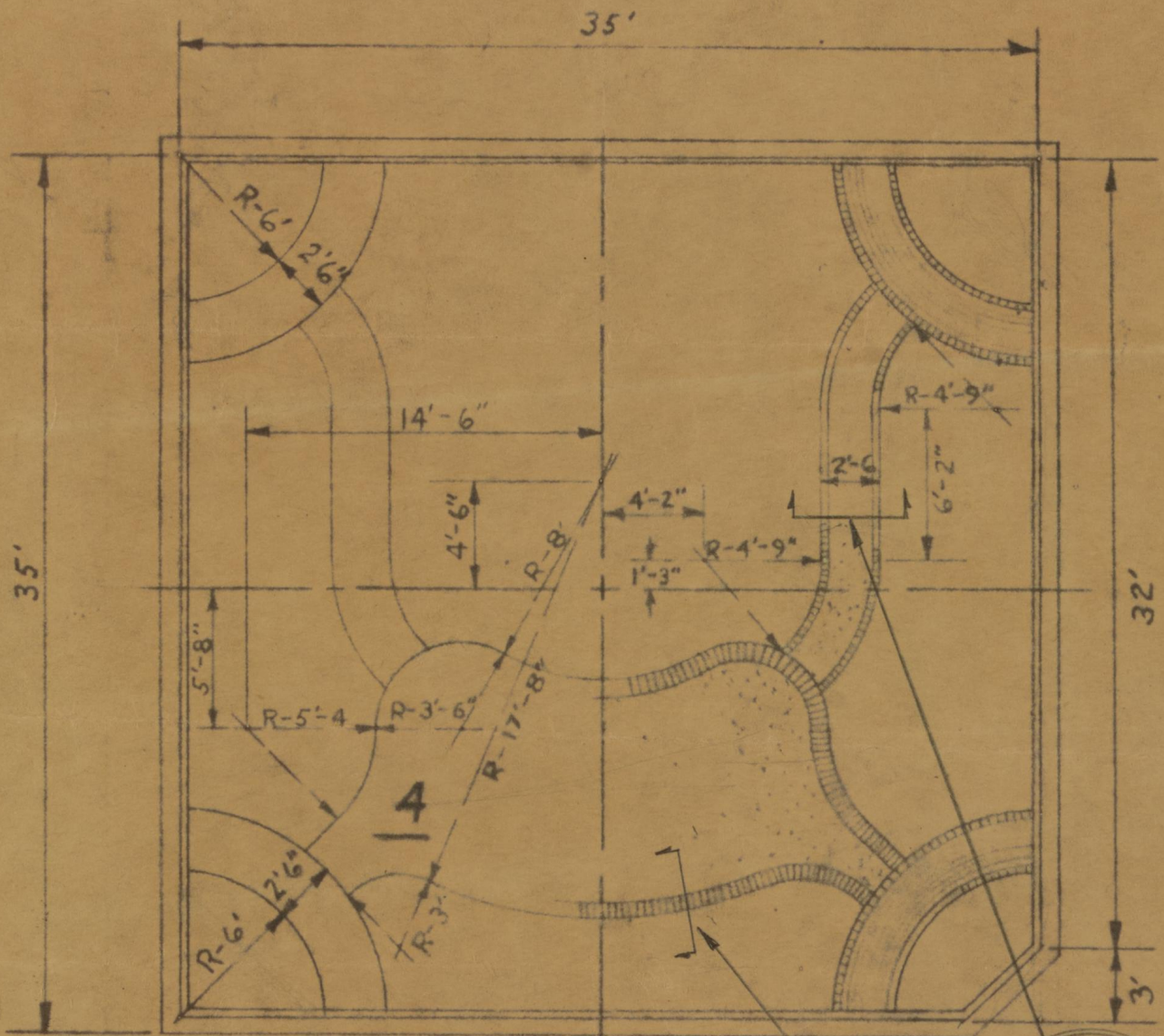
GCL COMMENDATIONS:

Jon Carloftis/Dick DeCamp/Robert Hillenmeyer (deceased)

John Michler/Lucy Graddy Smith/Mary Warren/Isabel Yates

Shaker Village at Pleasant Hill

Friends of the Garden Party every fall with auction items and often garden art Bluegrass Winners '85 and Entertaining with BG Winners '07 **Cookbook**
Pomegranate **linens** "Garden Gate Collection", inspired by iron gates



← MAIN WALK →

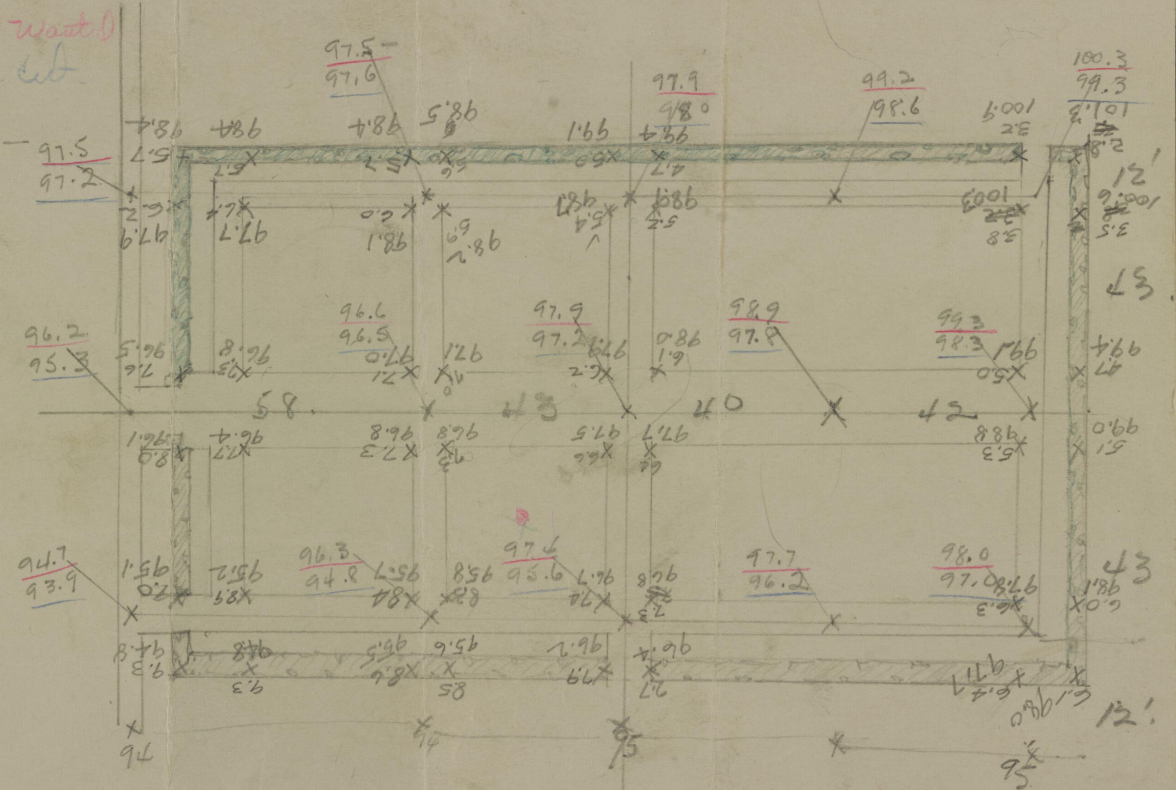
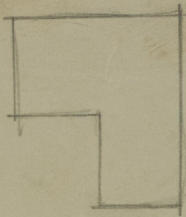
PARTERRE NO. 4

SCALE - 1" = 10'

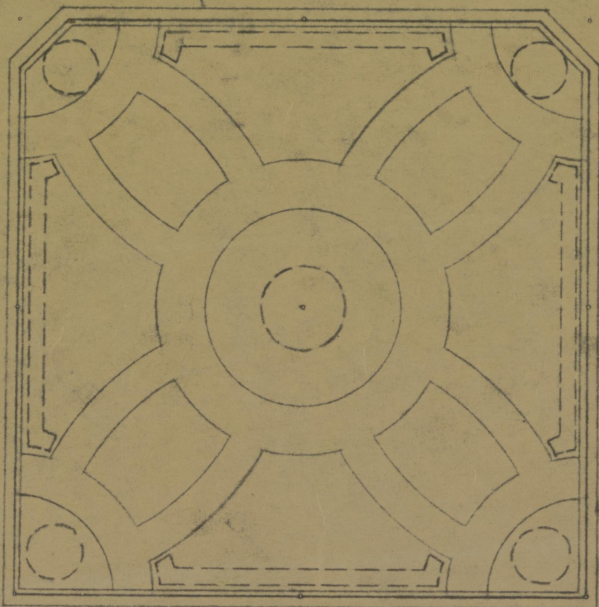
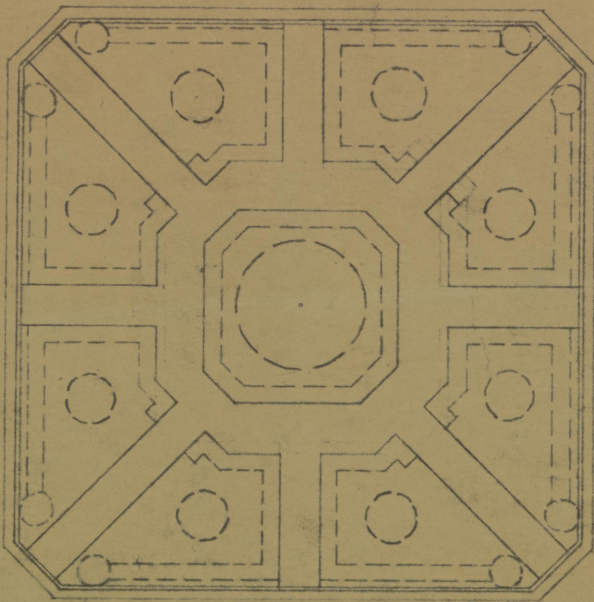


3 B.W.

Red - Final Level (w/soil)
 Blue - Level after cut



B.N. 100.00
 BS 4.08
 11/10/04.08



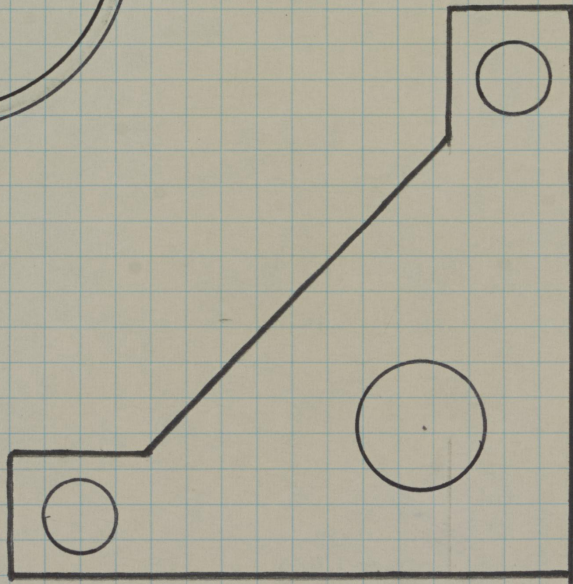
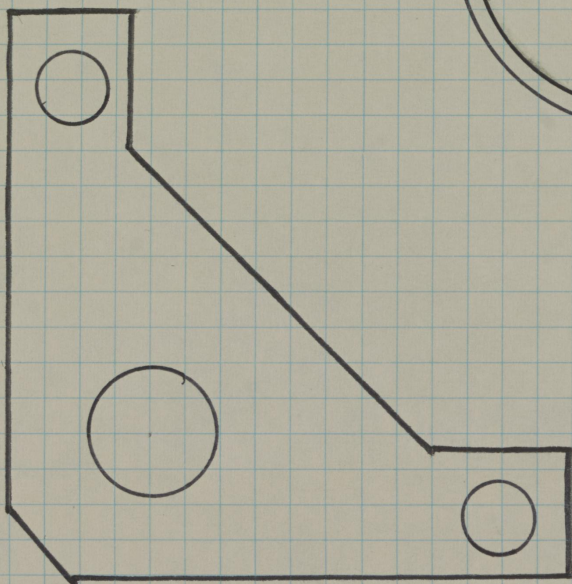
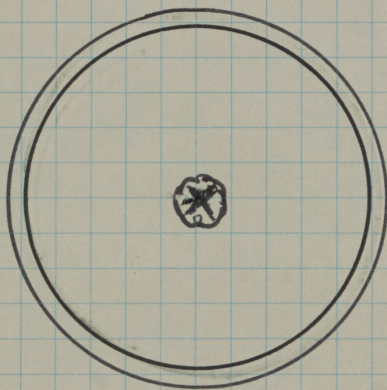
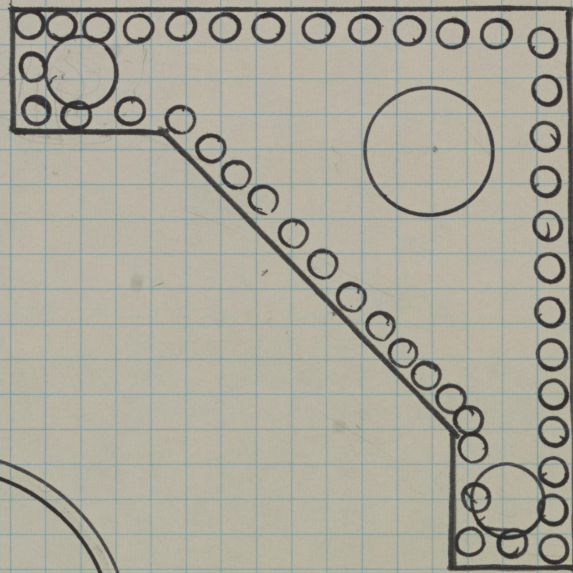
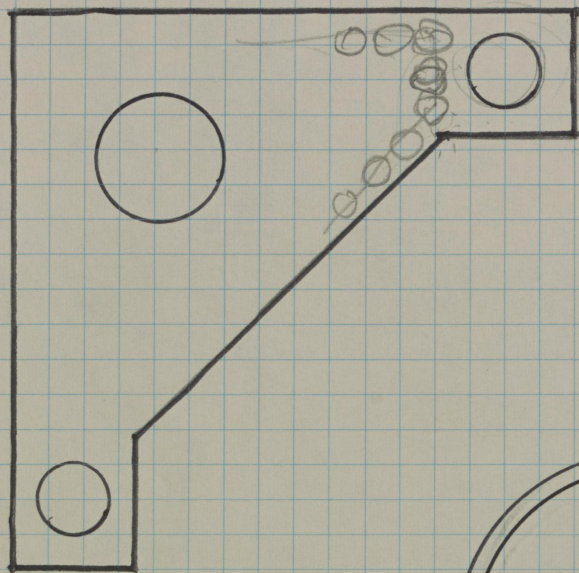
PARTERRE LAYOUT

FOR

ASHLAND HOME OF HENRY CLAY
HENRY FLETCHER KENNY - LAND. ARCH.

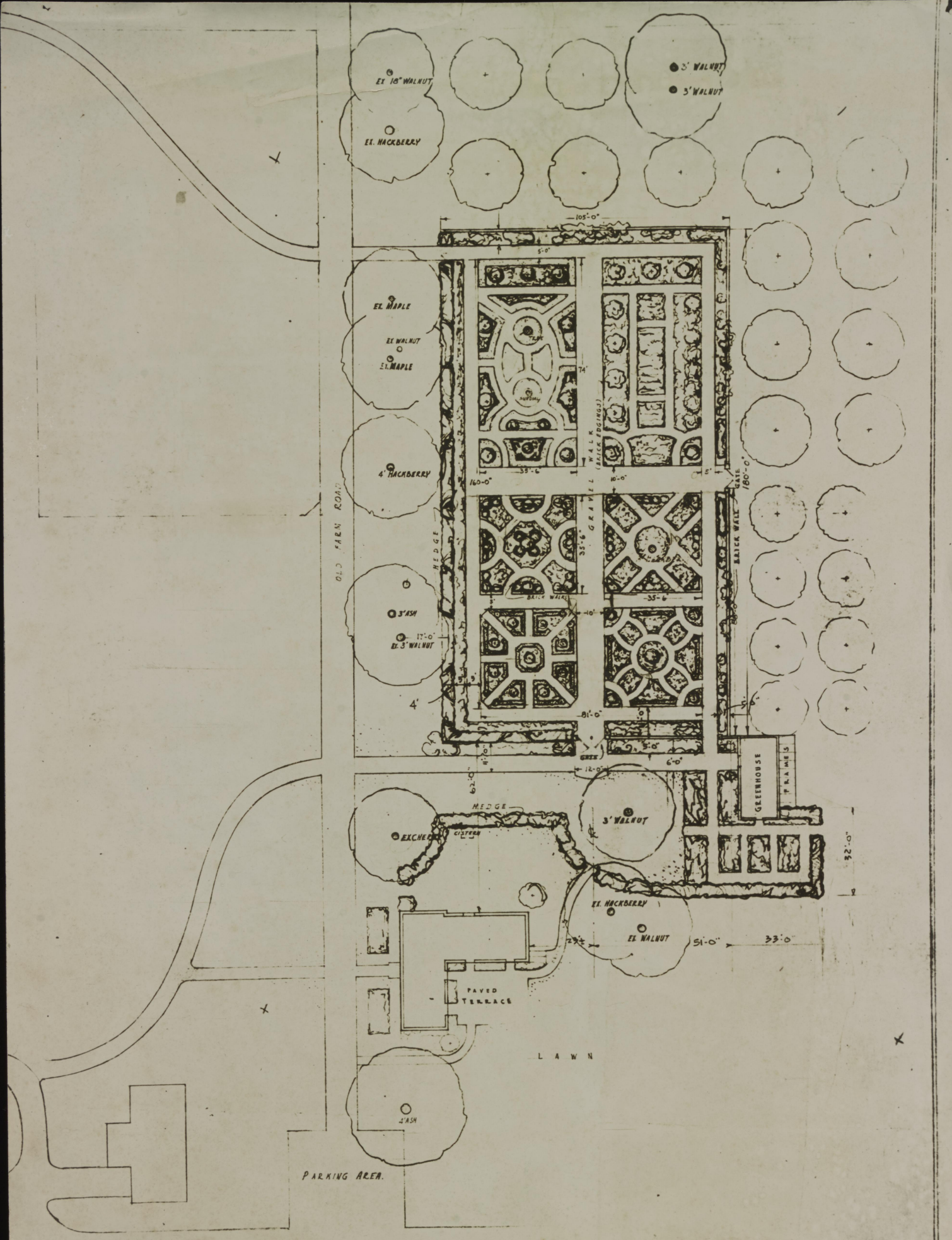
SCALE - 1" = 10'

5/15/51



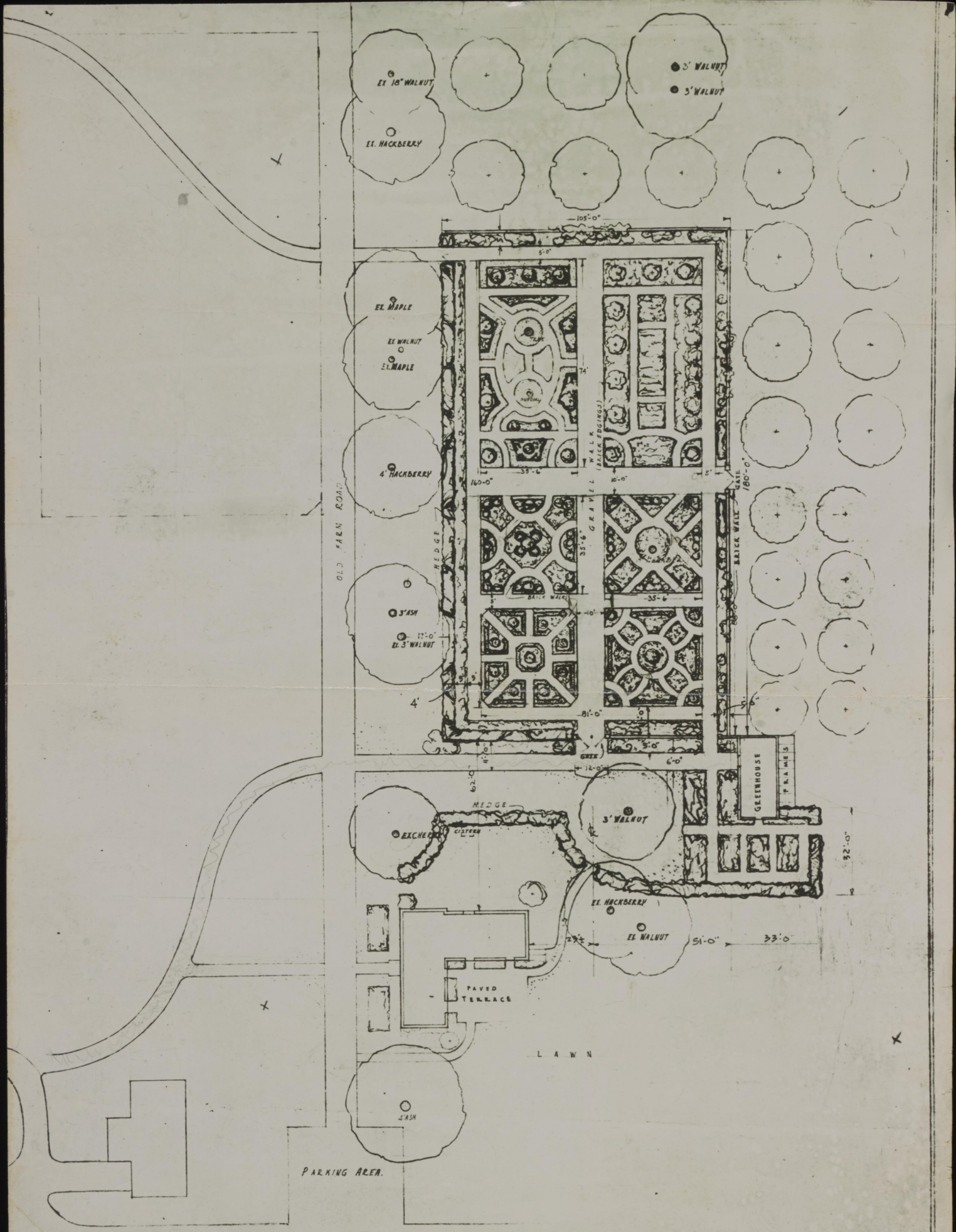
4 - BOXWOOD 42"
 8 - BOXWOOD 24"
 180 - DWF BOXWOOD 10"

SCALE 1" = 5' : 0"



A STUDY FOR THE PRINCIPAL GARDEN AREA OF
 'ASHLAND' - HOME OF HENRY CLAY
 LEXINGTON, KENTUCKY

Faulkner # 3136.00



Fee \$ 3136.00

A STUDY FOR THE PRINCIPAL GARDEN AREA OF
 'ASHLAND' - HOME OF HENRY CLAY
 LEXINGTON, KENTUCKY



**The Garden At Ashland
The Henry Clay Estate**

Illustrative Plan
Prepared for:
The Garden Club Of Lexington

Prepared By
Joey Svec

 **Barrett Partners, Inc.**
PLANNING AND LANDSCAPE ARCHITECTURE