

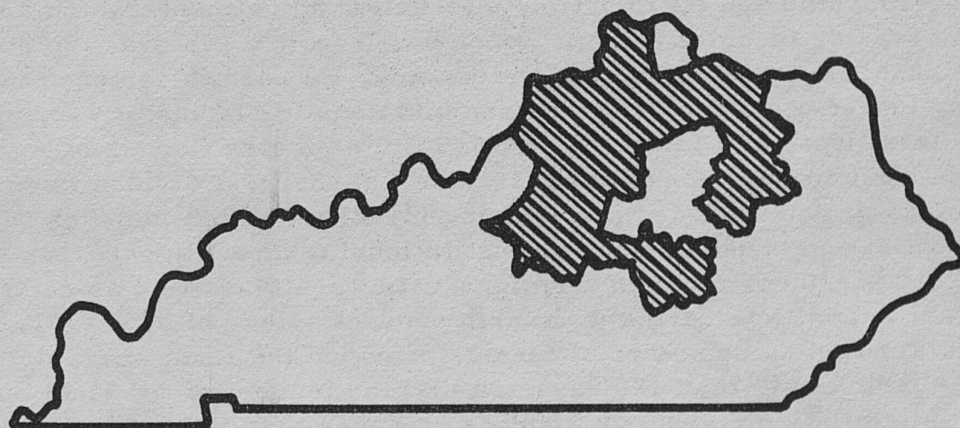
Progress Report 56

April 1957

SOME ASPECTS OF THE
**Size-of-Farm Problem in
Economic Area 6**

By HARALD R. JENSEN and LUTHER KELLER

Department of Agricultural Economics



AGRICULTURAL EXPERIMENT STATION
UNIVERSITY OF KENTUCKY
LEXINGTON

SOME ASPECTS OF THE SIZE-OF-FARM PROBLEM
IN ECONOMIC AREA VI 1/

By Harald Jensen and Luther Keller

Farm families on small farms in Economic Area VI are not getting much income for the time spent in farming. This fact, together with other evidence which follows, suggests that farm size has a lot to do with size of income from farming. Farm size is related to income in these ways: (1) The amount of income depends on the size of farm. For example, within a group of farms where neither cost advantages nor disadvantages exist for farms of various size, large farms will have, under usual price relationships, higher incomes than small farms, (2) the amount of income in relation to the amount of resources used depends on the cost advantages or disadvantages for farms of various size. For instance, if costs per unit of farm product decrease with increases in acre size (acres is only one of a number of measures of farm size), a 200-acre farm will have a net income more than twice as large as that of a 100-acre farm.

Increase in size of farm alone, however, does not guarantee larger incomes. Some farms are operated so inefficiently that a larger volume of business might mean lower incomes or even losses. Using more land and capital to operate a larger unit can increase incomes for many small farms only if management level is increased along with land and capital.

This study was made (1) to determine the relationship between farm size and income and (2) to outline alternative adjustments which are basic for increasing incomes of families on small farms. In order to study the relationship between farm size and income, we need to compare incomes, costs, investments and resource combinations for farms of varying size. The classification of farms in the 1950 United States Census of Agriculture makes such comparisons possible. The Census first divided farms into two large groups: (1) commercial and (2) other, which includes part-time, residential and unusual, such as institutional farms. In general, all farms that sold \$1,200 or more of farm products were classified as commercial farms. In addition, farms with farm product sales of \$250 - \$1,199 were also classified as commercial farms, provided the farm operator worked off the farm fewer than 100 days and that the income of the farm operator and his family from nonfarm sources was less than the total value of farm products sold. The Census then divided all commercial farms into six classes on the basis of the total value of products sold. These classes are as follows:

1/ This study is based primarily on data from the United States Census of Agriculture, 1950. Economic Area VI includes 26 counties in North Central Kentucky. Generally it includes outlying sections of the Bluegrass Area (exclusive of the Inner Bluegrass Area).

Class	Value of farm products sold
I	\$25,000 or more
II	\$10,000 to \$24,999
III	\$ 5,000 to \$ 9,999
IV	\$ 2,500 to \$ 4,999
V	\$ 1,200 to \$ 2,499
VI	\$ 250 to \$ 1,199

Hence, in studying the size-of-farm problem in Economic Area VI we can compare incomes, costs, investments and resource combinations for six different size of farm groups, for volume of sales is a measure of size. There are other measures. For example, acres are often used as a measure of size. Total capital investment or the total dollar value of all inputs or resources used during the year is also sometimes used. Acres, since they represent only one of the resources (land) used in farming, do not always accurately measure farm size. In most instances, however, acres, volume or value of output, total capital (land included) invested and dollar value of all inputs or resources used during the year go hand in hand (Table 1).

Table 1. - The Number of Commercial Farms in Size Classes,
Economic Area VI, Kentucky, 1949 (Source: U.S. Census and Estimates)

Class of farm	Acres per farm	Gross Sales	Total capital invested	Total inputs used during the year	No. of farms	Percent of farms in each class
I	539	\$25,000 & over	\$109,359	\$36,189	233	0.7
II	284	10,000-24,999	60,241	13,347	1574	4.5
III	168	5,000- 9,999	28,125	6,274	5176	14.6
IV	105	2,500- 4,999	14,543	3,509	10945	31.0
V	77	1,200- 2,499	9,204	2,474	11269	31.9
VI	60	250- 1,199	6,395	1,965	6121	17.3

According to the 1950 census, most of the commercial farms in Economic Area VI fell into Class V, with sales of \$1,200 to \$2,500 (last two columns, Table 1). But nearly as many fell into Class IV, with sales of only \$2,500 to \$5,000. Class VI farms with sales of \$250 to \$1,200 ranked third in number. Thus, about 80 percent of all commercial farms in Economic Area VI had sales of less than \$5,000, which leaves only 20 percent with sales of \$5,000 and above.

With this general background, let us take a closer look at incomes and costs on these farms of varying size (Table 2).

Table 2. - Income and Costs for Commercial Farms in Economic Area VI, Kentucky, 1949
(Source: U.S. Census and Estimates)

Class of farm	VI	V	IV	III	II	I	Average
1. Total product	\$1,178	\$2,247	\$4,015	\$7,327	\$15,021	\$41,354	\$4,181
2. Total inputs	1,965	2,474	3,509	6,274	13,347	36,189	3,914
a. Cash farm expenses*	422	581	943	2,152	5,606	20,194	1,250
b. Interest on buildings, machinery & livestock	171	253	415	818	1,640	3,088	452
c. Interest on land	176	249	384	732	1,640	2,906	427
d. Depreciation on buildings & machinery	140	197	328	656	1,346	2,376	360
e. Labor costs**	1,056	1,194	1,440	1,916	3,115	7,625	1,426
3. Income above cash farm expenses	756	1,666	3,072	5,175	9,415	21,160	2,931
4. Residual to labor	269	967	1,946	2,969	4,789	12,790	1,693
5. Residual to management	-787	-228	506	1,053	1,674	5,165	267

* Includes all cash farm operating expenses except hired labor costs.

** Includes operator, family and hired labor.

INCOMES AND COSTS

The income or value of total product figures include the value of all farm products sold as well as the value of those used in the home (line 1, Table 2).^{2/} These incomes ranged all the way from \$1,178 on Class VI farms to \$41,354 on Class I farms.

Inputs higher relative to incomes on small farms

The total input figures (line 2) included both out-of-pocket and overhead costs. Total inputs ranged from \$1,965 on Class VI farms (which had incomes of \$1,178) to \$36,189 on Class I farms (which had incomes of \$41,354). The large farms not only had much larger incomes than the small farms, but their inputs were lower in relation to incomes. The main reason for this was that the larger units could spread their fixed or overhead costs over more acres and animals. The resulting gain is the most important one which comes from having large operating units.

Labor is the largest single input on small farms

Total inputs (Table 2) were broken down to show the amounts for cash farm expenses; interest on building, machinery and livestock investments;

^{2/} The rental value of the home has not been included.

interest on land investment; depreciation on buildings and machinery; and labor costs. Of all the inputs included here, actually only cash farm expenses and hired labor costs involved a cash outlay. A charge for operator and family labor and interest on investment were included as inputs to show how net farm income compares with the returns which could be realized were the operator to put all his capital (land included) out at the going rate of interest and to hire out all his labor.

Cash farm expenses include cash outlays for such items as machine hire and repair, fuel and oil, seeds, fertilizer, and feed, livestock and poultry purchases. Cash farm expenses are by far the most important cost on the large farms; on Class I farms they totaled up to \$20,194.

Interest on buildings, machinery, livestock and land shows what the farm operator could make if he could reinvest the money and earn 5 percent on what he has tied up in land and buildings and 7 percent on what he has tied up in livestock and machinery. These interest values or "costs" show that they are relatively unimportant "cost" items for any of the size of farm groups. For any of the size of farm groups the largest single input is either for cash farm expenses or for labor; cash farm expenses is the largest input item on the large farms while labor is the largest on the small farms. Notice that the increase in labor inputs from Class VI to Class I farms was not nearly so large as the increase in total inputs. Labor inputs increased only about 7 times, while total inputs increased about 18 times.

Depreciation on buildings was charged at 5 percent of the estimated 1949 value, while machinery depreciation was charged at 10 percent. Depreciation costs thus represent the estimated dollar value of buildings and machinery used up each year in the production process.

Only large farms show returns to management

Before interest, depreciation and labor inputs were subtracted, all size groups had some income, which ranged from \$756 on Class VI farms to \$21,160 on Class I farms (Table 2). These income figures indicated that all size groups were able to pay "cash farm expenses" and have something left over for interest, depreciation and labor charges.

Likewise, before labor inputs were subtracted (but after all other input items have been subtracted) all size groups had some income. As indicated by "residual to labor" these amounts ranged from \$269 on Class VI farms to \$12,790 on Class I farms (Table 2). The amounts listed represent what is left as payment to labor and management.

After labor and all other input items except management were subtracted, only Class IV, III, II and I farms showed a profit or a positive return

to management. Class VI farms had a negative return of \$787; they were short this much after paying cash farm expenses plus reasonable charges for labor and capital investment. Class V farms (farms with gross sales of \$1,200 - \$2,500 or an average product valued at \$2,247) had a negative return of \$228. These positive and negative returns are important in our analysis. To really see their importance requires a graphic picture (Fig. 1). Here the ratio of the value of the total product to the value of the total input is plotted against the value of the total inputs for the six classes of farms. A ratio of 1.0 on the vertical axis represents the break-even point or where the value of the total product is exactly equal to the value of the total input. Thus, the horizontal line drawn at 1.0 has special significance. All farms below this line show a loss while the farms above the line show a profit.

In Table 2, Class VI and V farms (farms with gross sales of less than \$2,500) show negative returns. These are also the ones below the horizontal line at 1.0 (Fig. 1), and they represent 49 percent of all commercial farms in the Economic Area VI. The fact that these farms show losses does not mean they are going into debt or that the families on them are starving. It does mean that they failed to make cash farm expenses together with the conservative wage (\$947 per mature worker) and investment costs which were charged against their labor and capital.^{3/} If the farm families on these small farms (Classes VI and V) were entirely motivated by profit they would either increase the size of their farming operations or transfer their labor and capital into employment other than farming.^{4/} Economically, the losses on these farms mean that the labor and capital employed here did not earn as much as it could either in industry or on larger farms. The positive returns or the "plus 1.0" ratios on the larger farms (farms with gross sales of \$2,500 or above) mean that these farms not only earned enough to pay for all inputs but had something left over.

Economies are associated with increased size

By connecting the values for the various classes of farms (Fig. 1) with a broken line, one can more readily visualize the economies of size available to farms in Economic Area VI. As shown, the economies of size (average efficiency) increase sharply from Class VI (with gross sales of \$250 - \$1,200) to Class IV farms (with gross sales of \$2,500 - \$5,000). Class III farms were actually most efficient of the six classes of farms. However, there are logical reasons for believing that the value of the total product/value of total input ratios (Fig. 1) underestimates the average efficiency of the large, specialized farms in relation to the smaller, more

^{3/} The \$947 was the annual average wage for hired farm labor in Kentucky, 1949.

^{4/} Of course, money income and the goods and services it will buy is only one of the goals which make up the complex of family satisfactions.

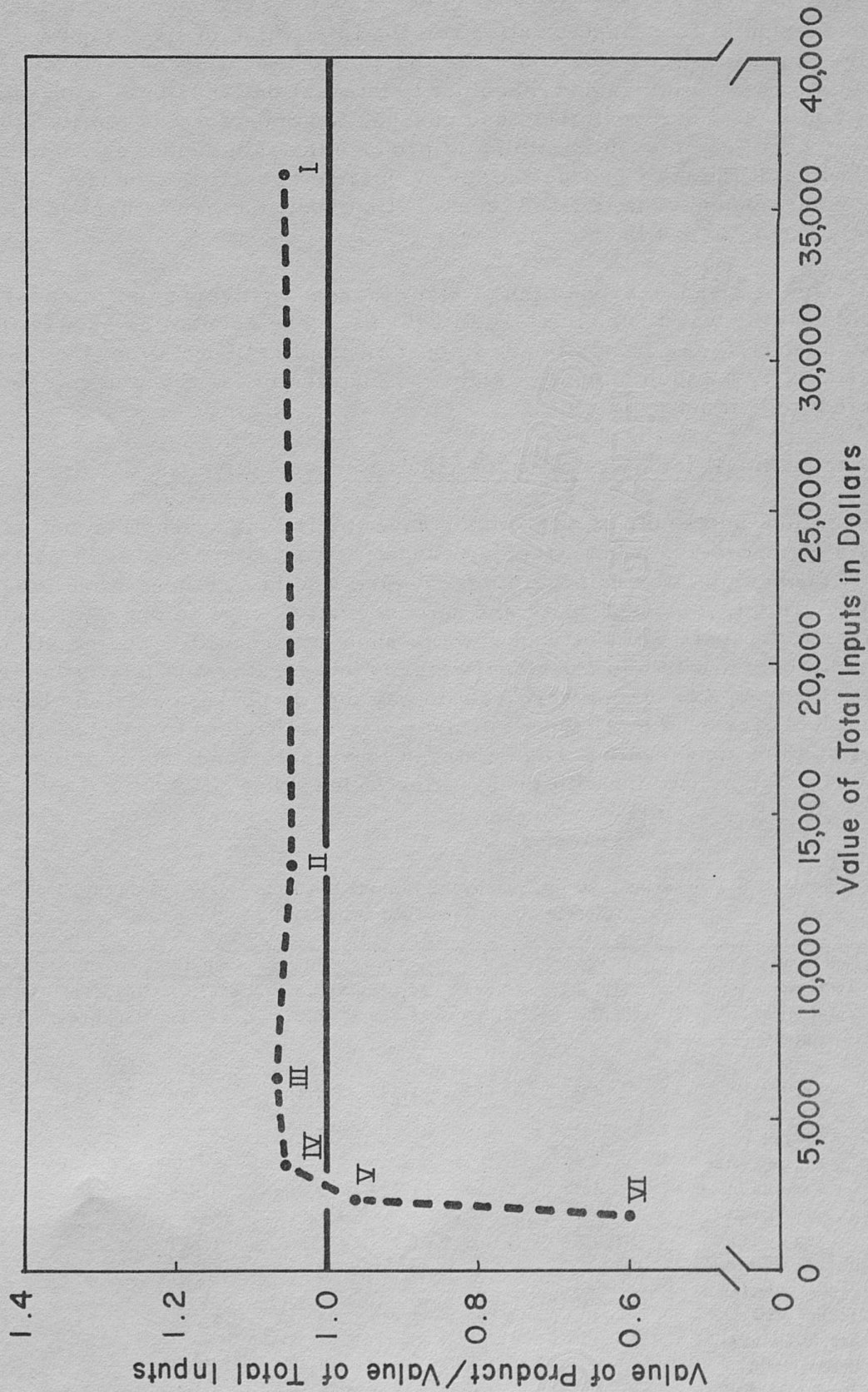


Fig. 1. - The ratio of the value of total product to the value of total inputs in relation to value of total inputs by classes of farms in Economic Area VI, Kentucky, 1949. (Source: U.S. Census Data and Estimates)

diversified farms. For this reason we show the relation between value added/value of fixed inputs ratios and the total value of fixed inputs used (Fig. 2). Fixed inputs or costs are the annual inputs in the form of depreciation on buildings and machinery, interest on land, buildings, machinery and livestock investments and charges for operator and family labor. These costs go on even if nothing is produced. Value added is computed as the value of the total product minus cash farm operating expenses. Thus, the value added/value of fixed inputs ratio shows the net returns to the relatively fixed factors in farming.

Figure 2 shows economies of size (increasing average efficiency) for farms all the way from Class VI to I farms. The economies of size illustrated here (Figs. 1 and 2) have important implications in long-run planning particularly as such planning relates to the size of farm which can be expected to be most profitable.

Labor on small farms returns less than a conservative wage

In the short-run, of vital importance in farming is whether out-of-pocket costs can be met. When a farmer cannot pay out-of-pocket cash costs he must sooner or later quit farming. To see whether returns were large enough to pay all out-of-pocket costs and a conservative wage to operator and family labor, total costs were broken down to show returns after paying all out-of-pocket costs and to show residual returns to operator and family labor (Table 3). All size groups of farms were able to pay out-of-pocket costs and have something left over. What was left over was insufficient to pay the overhead cost and the conservative wage charged to operator and family labor on Class VI and V farms (farms with gross sales of less than \$2,500).

Table 3. - Income and Costs for Commercial Farms in Economic Area VI, Kentucky, 1949.
(Source: U. S. Census and Estimates)

Class of farm	VI	V	IV	III	II	I	Average
1. Total product	\$1,178	\$2,247	\$4,015	\$7,327	\$15,021	\$41,354	\$4,181
2. Total inputs	1,965	2,474	3,509	6,274	13,347	36,189	3,914
a. Out-of-pocket costs ^{1/}	468	675	1,147	2,665	7,398	26,581	1,548
b. Overhead costs other than operator & family labor	487	699	1,127	2,206	4,626	8,370	1,239
c. Operator & family labor	1,010	1,100	1,235	1,403	1,323	1,238	1,127
3. Returns after paying out-of-pocket costs	710	1,572	2,868	4,662	7,623	14,773	2,623
4. Residual returns to operator & family labor	223	873	1,741	2,456	2,997	6,403	1,394

1/ Includes cash farm expenses plus hired labor costs.

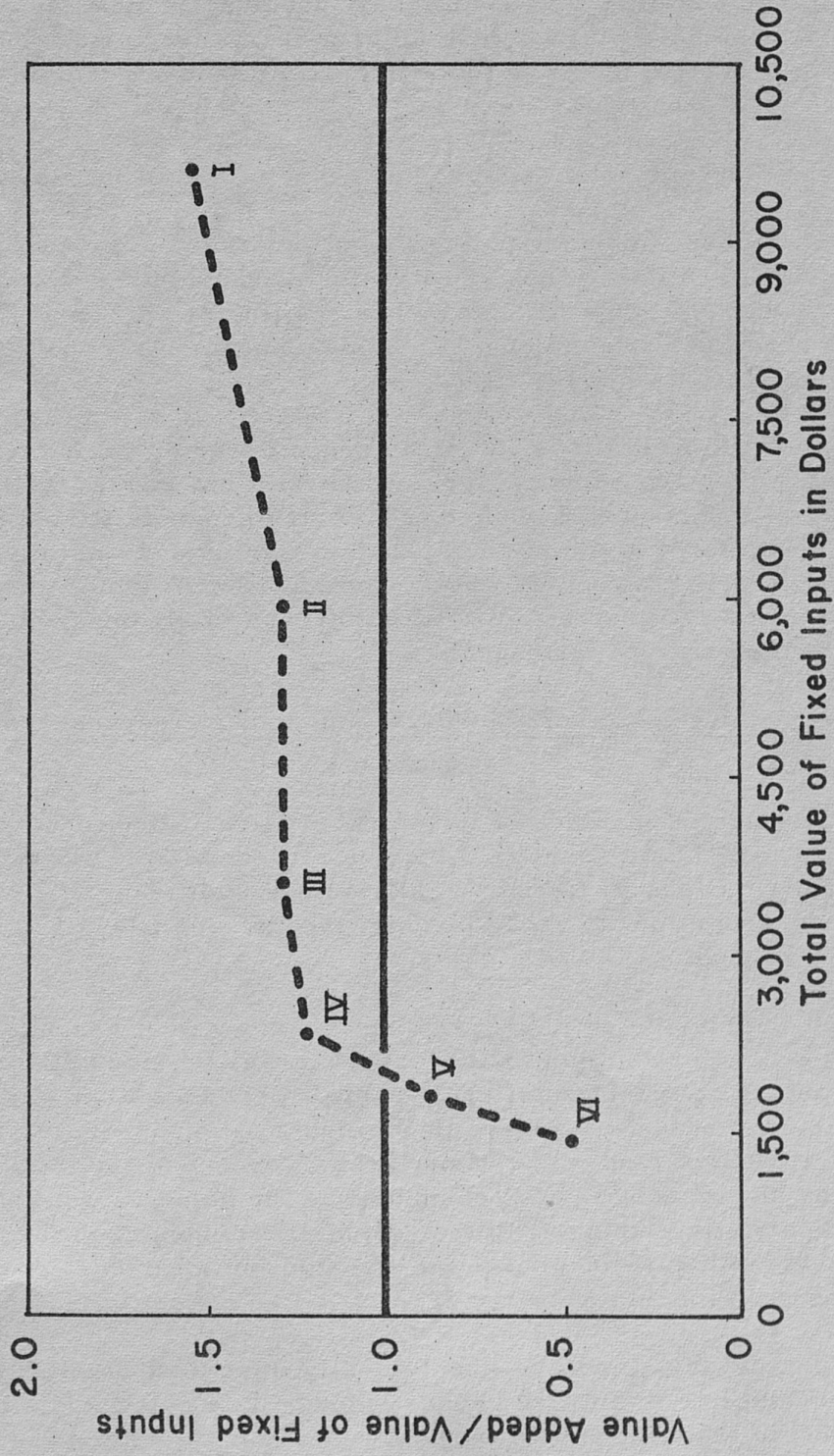


Fig. 2. - The ratio of the value added to the value of fixed inputs in relation to the total value of fixed inputs by classes of farms in Economic Area VI, Kentucky, 1949. (Source: U.S. Census and Estimates.)

PRODUCTION AND RESOURCE COMBINATIONS

Before we examine the reasons why incomes are much lower in relation to inputs on small farms than on large farms let us see what the different size groups of farms produce and what resource combinations are used to get this production.

Field crops most important source of income on small farms

The two most important sources of income on commercial farms in Economic Area VI are field crops and livestock and livestock products other than dairy and poultry, except on Class VI farms (farms with gross sales of \$250 - \$1,200) where field crops along with home-consumed products are the two most important sources (Fig. 3).

Income from field crops for size groups of farms varied from 17 to 53 percent of the total and tended to decrease with increases in size of farms. The relative importance of income from dairy products varied from approximately 6 to 19 percent among the classes of farms and was highest on Class IV, III and II farms. The percentage contribution of home-consumed products to gross income declined steadily with increase in size of farm. Poultry sales were highest on Class I farms.

Income from livestock other than dairy and poultry increases with increase in farm

The relative importance of livestock and livestock products (other than dairy and poultry) as a source of income increased steadily as size of farm increased. On Class VI farms these livestock and livestock products accounted for only 19 percent of the gross income, whereas on Class I farms they made up over 60 percent of the income.

To get the complete picture, we need to know what resources were required to get the production for different classes or sizes of farms (Fig. 4). The percentage contribution of each input or resource item was based on the estimated annual use value of these inputs or resources. Thus, the annual contribution of land was estimated at 5 percent of the total land investment. The annual contribution of labor was the number of mature workers times the going wage in agriculture. Capital includes cash farm expenses, interest on buildings, machinery and livestock investments, and depreciation on buildings and machinery.

Percentagewise, land was about equally important on all farms, irrespective of size. For all size groups it made up a relatively small portion (11 percent) of the total annual inputs.

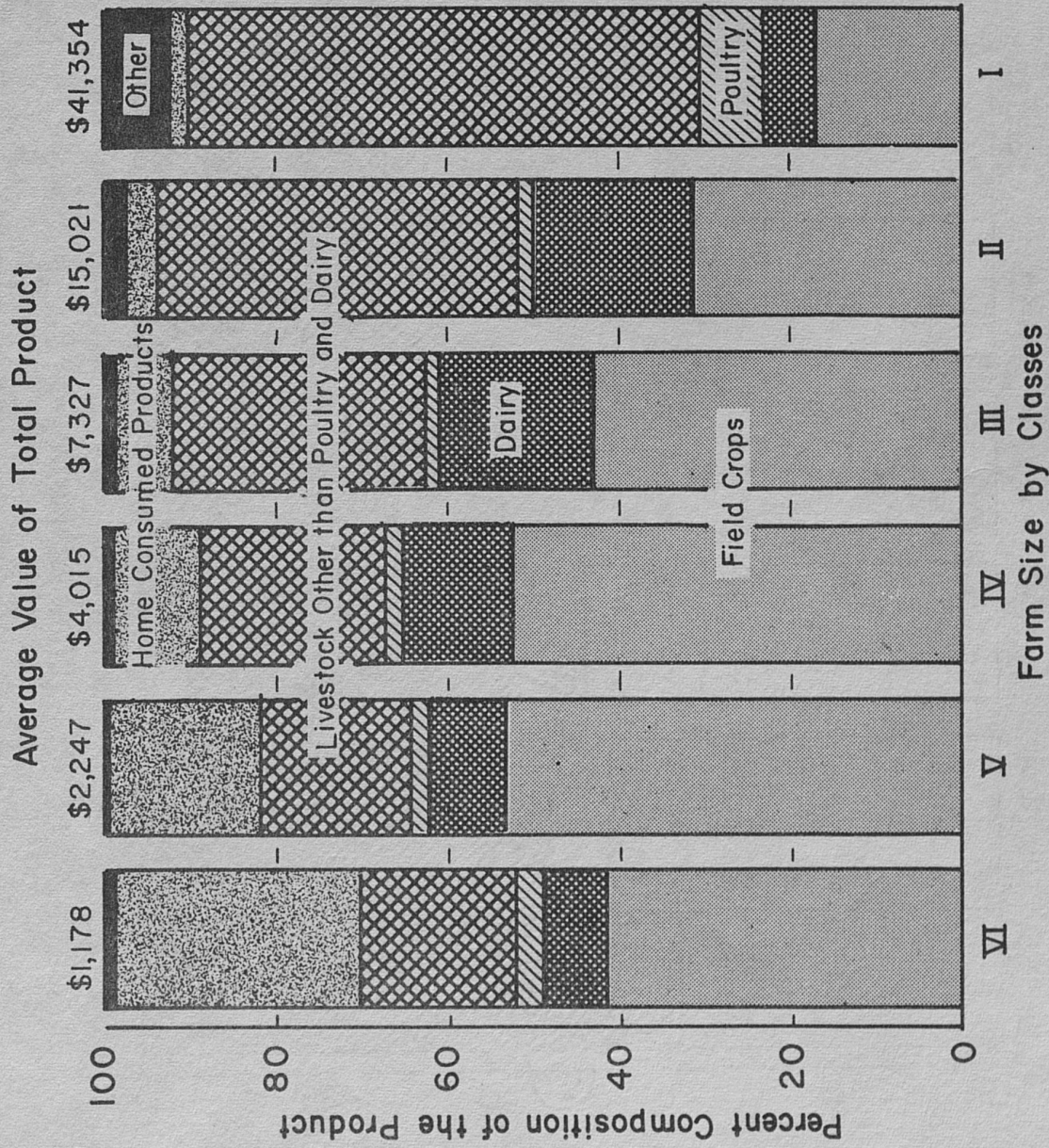


Fig. 3. - The percentage composition of the product for classes of farms in Economic Area VI, Kentucky, 1949. (Source: U.S. Census, 1949.)

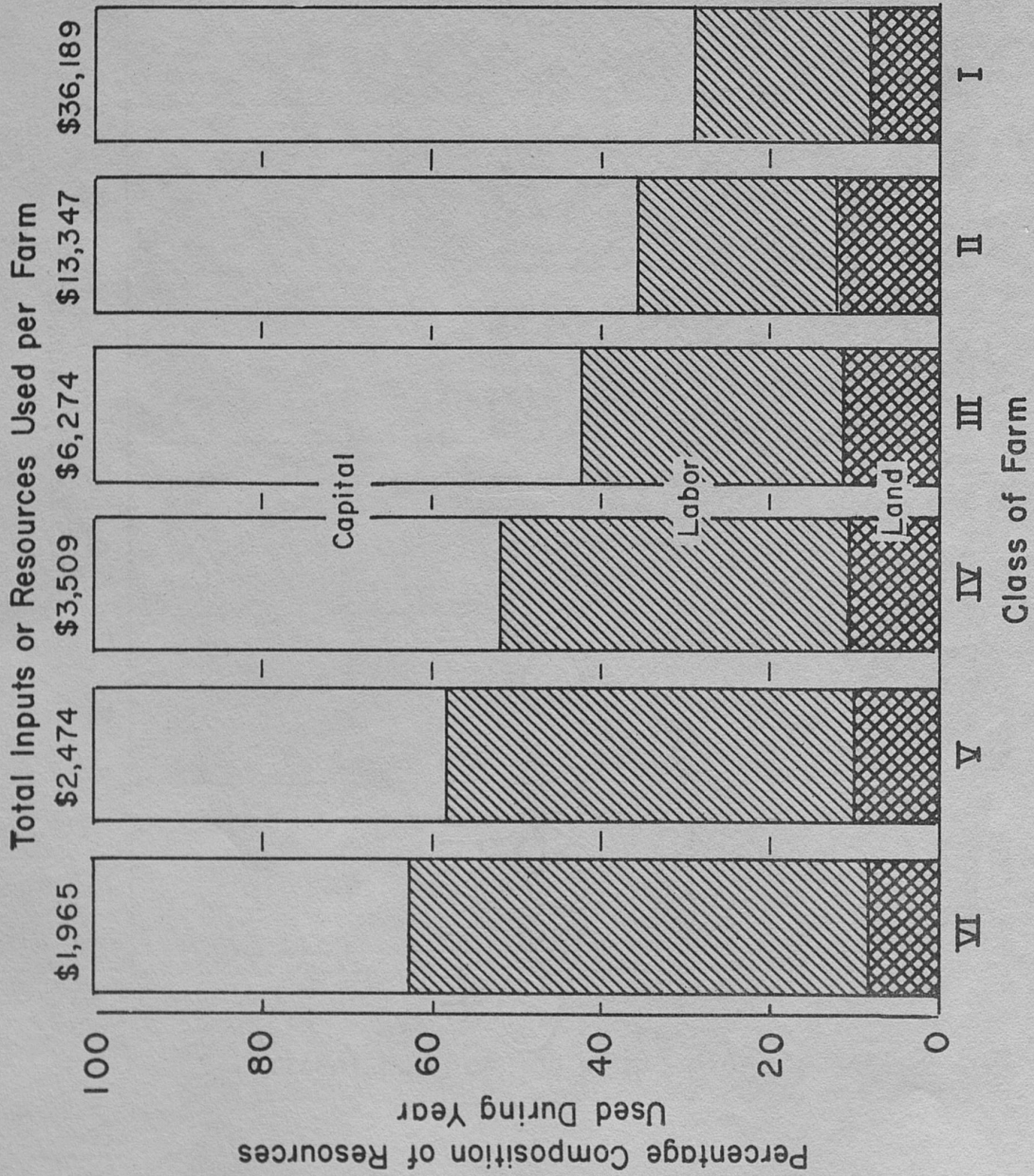


Fig. 4. - The percentage composition of inputs or resources used per year by classes of farms in Economic Area VI, Kentucky, 1949. (Source: U.S. Census and Estimates.)

Labor inputs rank highest on small farms while capital inputs rank highest on large farms

Labor inputs were relatively more important on the smaller farms than on the larger farms. In fact on Class IV farms labor inputs were more important than all other inputs combined. In contrast, on the larger farms (Class IV, III, II and I) capital is by far the most important input item.

The decreasing importance of labor and the increasing importance of capital as farms increase in size is clearly illustrated in Fig. 4. This means that the amount of capital used per worker increased as farm size increased. This is one reason why incomes were much higher in relation to inputs on large farms than on small farms. For any one input or resource to be productive it must have enough of other inputs or resources to go with it. Land by itself is not productive, neither is labor by itself, nor capital by itself. Let us see how productive labor, land and capital were on farms of different size.

PRODUCTIVITY OF LABOR, LAND AND CAPITAL

We said earlier that operators on many small farms were not getting much return for the time they spent farming. In other words, on many small farms labor was not very productive. We have already talked about residual returns to labor. We defined residual returns to labor as what is left after subtracting all inputs (including a fair return to land and capital), except labor inputs, from gross income. This gives a rough estimate of what labor is worth. Heretofore, we have either figured the residual return to all labor or to all operator and family labor for different class farms. But since large farms employ more workers than small farms, we need to compute the residual returns to labor per worker to find out how productive labor is on farms of varying size. We first computed the average number of workers per farm and the residual returns to labor per worker for the six classes of farms (lines 1 and 2, Table 4).

Returns to labor per worker is low on small farms

Notice that the average number of workers per farm increased from 1.12 to 8.05 from Class VI to Class I farms, and the residual to labor per worker (net returns per worker) increased from \$240 to \$1589. The last column in the table shows an average net return per worker for all farms of \$1,121. Class VI and V farms had a return of less than this amount.

Part of this difference in income between the size groups can be explained by the amount of other resources used along with labor. For instance, notice how acres per worker increased from Class VI up through

Table 4. - Resource and Product Ratios for Productivity of Labor, Land and Capital, Economic Area VI, Kentucky, 1949 (Source: U.S. Census and Estimates)

Class of farm	VI	V	IV	III	II	I	Average
Number of workers (man years of all labor)	1.12	1.26	1.52	2.02	3.29	8.05	1.51
Residual to labor per worker	\$240	\$767	\$1,280	\$1,470	\$1,456	\$1,589	\$1,121
Acres per worker	53	61	69	83	86	67	72
Total investment per worker ^{1/}	\$5,710	\$7,305	\$9,568	\$13,929	\$18,310	\$13,585	\$10,617
Land and capital inputs per worker ^{2/}	\$812	\$1,016	\$1,362	\$2,157	\$3,110	\$3,548	\$1,648
Total product per worker	\$1,052	\$1,783	\$2,641	\$3,627	\$4,566	\$5,137	\$2,769

^{1/} Includes investment in land, buildings, livestock and machinery.

^{2/} These are the annual inputs, not the investments themselves, and include cash farm expenses, interest on land, buildings, machinery and livestock together with depreciation on buildings and machinery.

Class II farms and investment per worker increased throughout all classes as did land and capital inputs per worker (Table 4.) Note also that the rate of increase in acres per worker and in total investment per worker was much lower than the rate of increase in net returns per worker. Actually, land and capital inputs per worker gives a more accurate picture of the resources used along with labor. These inputs included cash farm expenses which ran high on the larger farms, particularly in the form of feed and feeder livestock purchases.

Total product per worker increases as capital and land per worker increases

In order to determine how much land and capital add to total production, total product per worker was compared with land and capital per worker (Fig. 5). This comparison gives a rough idea of what one farm worker produced with various amounts of land and capital. Total product per worker increased from \$1,052 on the smallest farms (Class VI) to \$5,137 on the largest (Class I). At the same time, land and capital inputs per worker increased from \$812 to \$3,548. Notice that land product per worker increased very consistently as land and capital inputs per worker increased.

From the figures one might surmise that any one farm operator could take \$3,548 in land and capital inputs (annual inputs) and produce \$5,137 in product. This notion may be entirely wrong. To illustrate, we have already

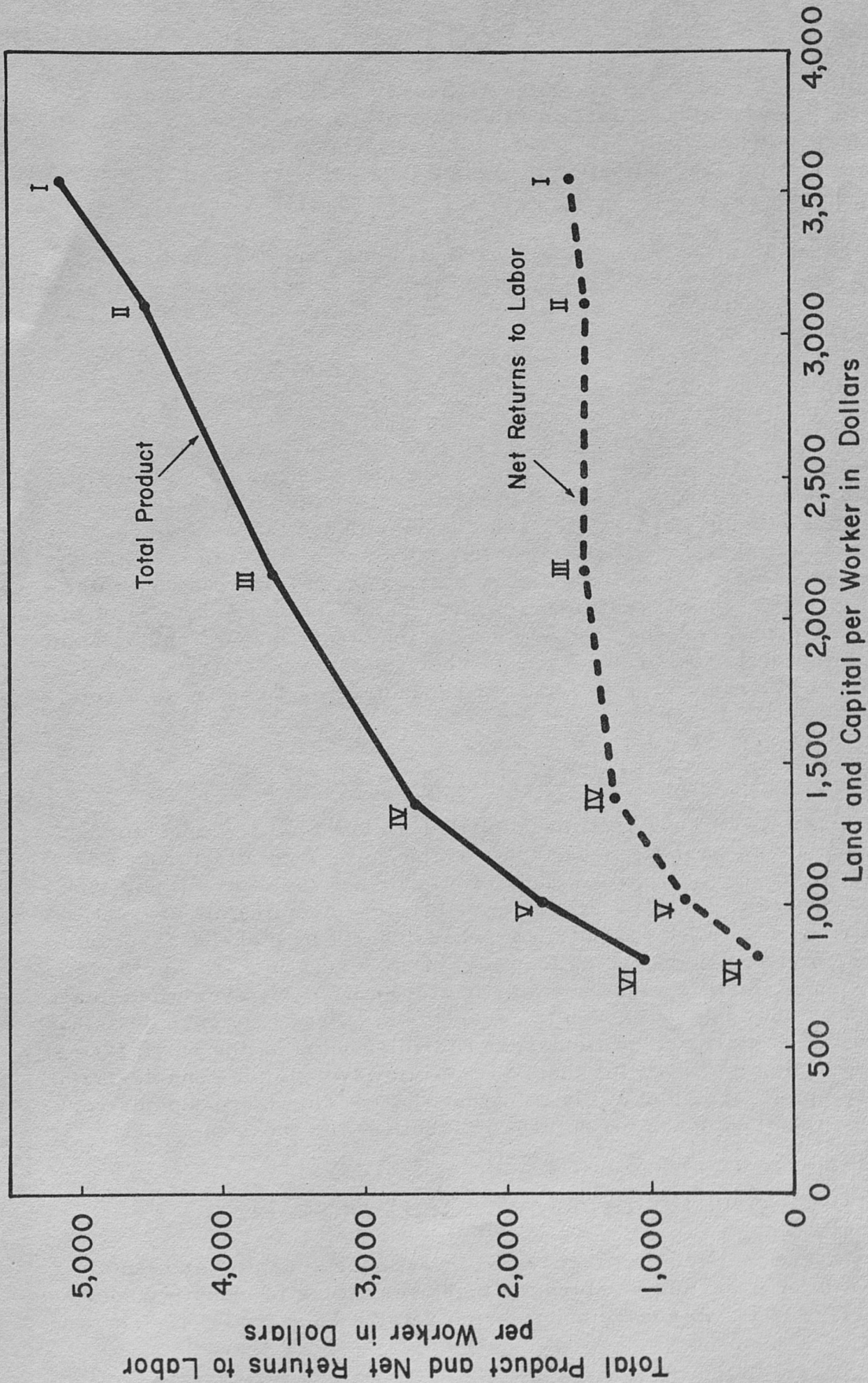


Fig. 5. - Productivity of land and capital, Economic Area VI, Kentucky, 1949.
(Source: U.S. Census and Estimates)

seen that Class I farms had over eight workers per farm and produced \$41,354 in product with \$28,564 input of other resources (other than labor); but one farm operator with \$28,564 in other resources and employing seven men is a different situation than eight men each with about \$3,548 in other resources.

Net returns to labor per worker were also compared with land and capital inputs per worker (Fig. 5). Net returns to labor per worker increased almost steadily up through Class I farms with increases in land and capital per worker.

On small farms the total cost of producing \$1 in product was more than \$1

High profits in relation to costs is a measure of over-all efficiency or productivity. For farms to show a profit, the cost of producing \$1 in product must cost less than \$1. Our study shows that Class I farms produced \$1 of product with \$0.88 (Fig. 6). This \$0.88 included all inputs - cash farm expenses, interest on land, buildings, livestock and machinery investments, depreciation on buildings and machinery plus a charge for hired, operator and family labor. On Class II farms it also cost \$0.88 to produce \$1 of product, while on Class III farms the cost was only \$0.85. On Class V and VI farms it cost more than \$1 to produce \$1 of product; costs on these farms were \$1.10 and \$1.67, respectively, for \$1 of product. For these small farms, these figures indicate losses.

Cash costs were less than \$1 per \$1 of product

Of course, we know that these small farms did not pay operator and family labor and their investment inputs at the going rate of return. For farms that do not have to pay for their own labor and their investment inputs, cash farm expenses per \$1 of product may be more meaningful, at least in the short run. It is when cash farm expenses cannot be met that farm families sooner or later must give up farming. Data shown in Fig. 6 help to explain why many small farmers are able to stay in business even when total products may not be great enough to cover costs. Since only cash costs have to be paid in the short-run, all classes of farms (including the small farms) have some income left over for themselves. However, when considering all inputs, the small farms definitely come out short. This fact becomes very apparent when we compare the returns in farming with those in industry.

OPPORTUNITY RETURNS TO LABOR AND CAPITAL

To compare the returns to labor and investment in capital and land in farming with the opportunity return for these resources in industry, we first need to arrive at suitable wage and interest rates as a basis for figuring the

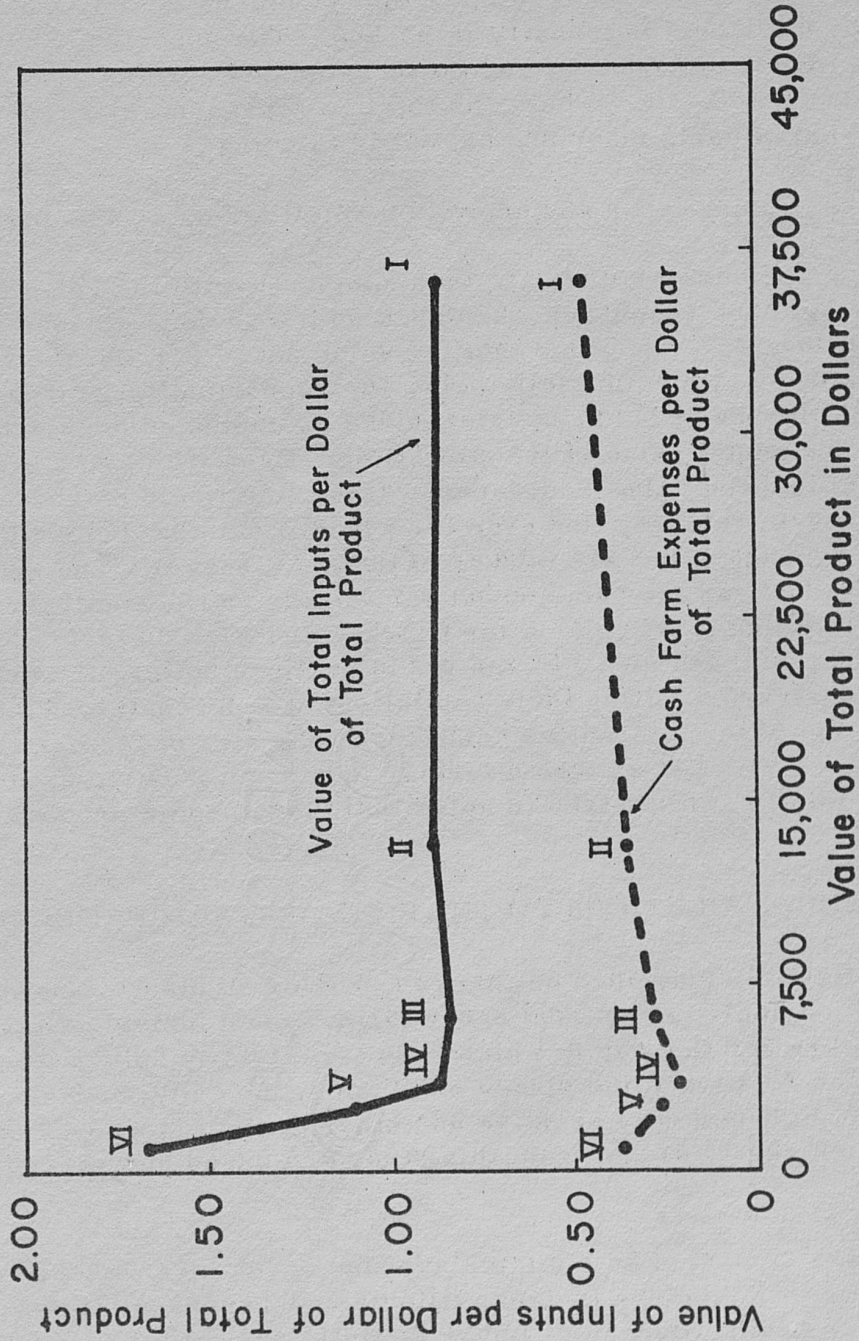


Fig. 6. - Value of inputs in relation to value of product for classes of farms in Economic Area VI, Kentucky, 1949. (Source: U.S. Census and Estimates)

opportunity returns. An annual wage of \$2,900 was figured as a reasonable wage opportunity for farm labor in nonagricultural employment, and 5 percent was chosen as a fair interest rate on capital.^{5/} The top line (Fig. 7) shows the opportunity returns to Kentucky farm labor and capital as figured on the basis of these rates. The opportunity returns for one man without any capital (only his labor) in industry is \$2,900. The opportunity return in industry for one man with \$6,000 of capital invested and earning 5 percent is \$2,900 plus \$300 or \$3,200, etc. Thus, the top line represents the real cost (opportunity returns) of using labor and capital in farming.

Dollar costs of using labor and capital on small farms appear high

These opportunity returns are then compared with the value actually added per worker by these resources when used on the various classes of farms (the broken line, Fig. 7). Note that the value added per worker when employing his resources in farming falls below the "opportunity-returns-in-industry line" for all classes of farms. Value added as computed does not include any allowances for rental value of farm dwelling. Even if this had been included it is doubtful that the value-added-per-worker line would be above the opportunity-returns-in-industry line even for Class II farms. (Class II farms had the highest average value per worker of the six classes). The crucial point to observe is how far the value added per worker on the small farm is below the opportunity line (particularly for Class V and VI). In terms of income only, families on these small farms would be much better off working for wages in industry and letting their capital out at 5 percent. Such a change represents one of the alternative solutions to the size of farm problem in Economic Area VI. Let us take a further look at alternative actions which small farm families might take to solve their low income problem.

POSSIBLE SOLUTIONS TO THE SIZE-OF-FARM PROBLEM

First of all, a study such as this can provide no blanket answers or solutions which apply to each and every farm. Each individual farm family situation differs and the way in which each farm family solves its problems depends on the relative value placed on income, security, independence, companionship, community prestige and other goals. Moreover, the conclusions which can be drawn from this study are based on average returns

^{5/} \$2,900 was computed as a simple average of the mean weekly wage in manufacturing in Michigan, Indiana, Illinois and Tennessee times 52. (From U.S. Dept. of Labor, Bureau of Labor Statistics, Monthly Labor Rev., Vol. 70, 1950, Table C-5). Earnings were given only for selected states. Ohio would have been preferred over Indiana and Illinois, and Kentucky over Tennessee, but the opportunity for exercising these preferences was not available.

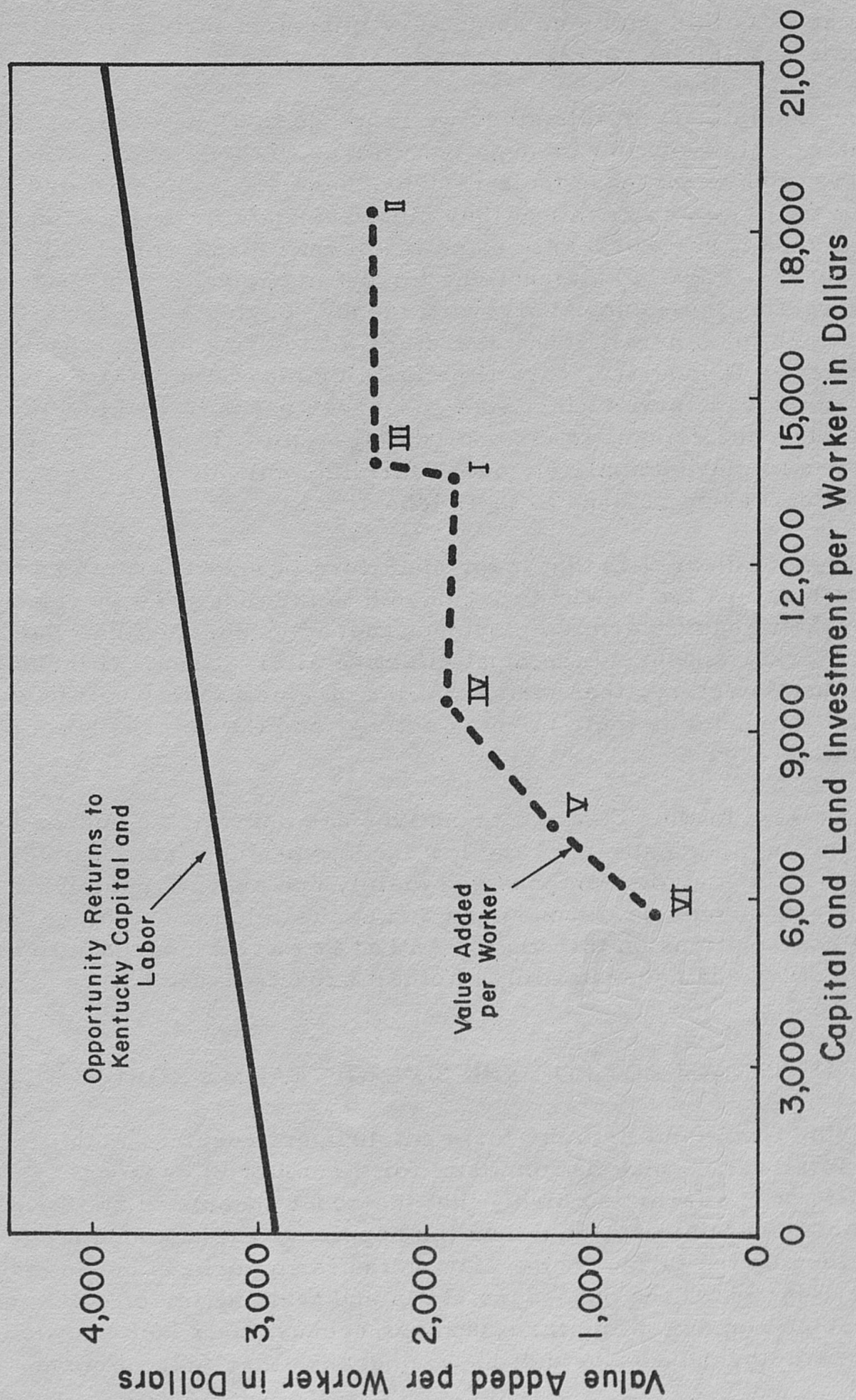


Fig. 7. - Opportunity returns compared with value added per worker in relation to capital and land value per worker, Economic Area VI, Kentucky, 1949.
(Source: U.S. Census and Estimates)

and average costs for various classes or size groups of farms. Each group is likely to include numerous deviations from the average. Nevertheless, a study such as this points up some very important farm problems together with some possible answers.

For example, from this study we conclude that operators of small farms have either relatively low or negative returns to their labor. Now, if these operators wish to increase their returns, here are some possible alternatives. If they want to stay in farming, they must somehow or other increase their land and capital per worker; in some instances, management will also have to be increased. Possible alternatives for getting control of more land and capital are: renting more land, borrowing money, buying a larger farm, or doing custom work for others. If the operators are willing to work partly in farming and partly in industry, part-time farming may be an alternative. Part-time farming can serve to increase resources per worker in farming and thereby increase returns to labor on small farms. If small-farm families are willing to move completely out of farming, full off-farm employment is a way of increasing returns to their labor.

It is quite clear that many operators of small farms are not getting very much return for the time they devote to farming. To increase their incomes, obtaining off-farm employment and/or increasing their land and capital per worker appear as the most effective alternatives. If these alternatives appear unsatisfactory, then farm families on small farms will have to continue to use mostly labor in their farming activity and the returns from their labor will continue low.

The extent to which these alternatives are unavailable and/or unacceptable suggests other aspects of the low income problem as it relates to size of farm. This study has emphasized mainly one aspect, namely, the relationship between income on the one hand and capital, labor and other inputs and product combinations on the other. An integrated approach to the problem requires study and understanding of other aspects as well.

OTHER ASPECTS OF THE SIZE-OF-FARM PROBLEMS

Moving from farm into off-farm employment requires mobility. Families on small farms may be immobile for a number of reasons. Some may value "life on the farm" so highly that the added income in off-farm employment is considered worth less than the happiness experienced from living and working on the farm. Some stay on the farm perhaps because they lack or believe they lack the necessary skills and training for off-farm employment. Some remain on the farm, perhaps, because they lack knowledge of off-farm employment opportunities, or because they fear to move. Others

remain on the farm, perhaps, not because they would not prefer to move but because they do not have enough money to get established elsewhere. Until causes for immobility are understood and until steps are taken to overcome immobility wherever it is considered as an obstacle to greater human satisfactions, off-farm employment can hardly be considered as a realistic alternative for solving the income problem on small farms.

The analysis of this study suggests that, if families on small farms want to stay in farming they must somehow or another increase their land and capital per worker if they desire to increase their incomes. Some of these families may very well be seeking ways of attaining more land and capital. Some may be held back because they can find no land to rent. Some may be held back because they can't borrow money with which to buy land, machinery, livestock, fertilizer or other inputs. Still others may hold themselves back because they consider expansion of operations with borrowed money too risky. Until the reasons why families on small farms fail to increase land and capital per worker are clearly understood and until steps are taken to facilitate such increases, increasing land and capital per worker can hardly be considered as a real alternative for solving the income problem on small farms.

Increasing land and capital per worker to increase incomes on small farms would be a poor practice in instances where managerial skills are inadequate for profitable use of additional land and capital. A large farm and business nowadays requires considerable skill and know-how in management and decision-making for financial success. Until more is known about the managerial skills and capacities existing on small farms and until steps are taken to improve these skills where they are lacking, increasing size of farm can hardly be considered as a realistic alternative for solving the income problem on small farms.