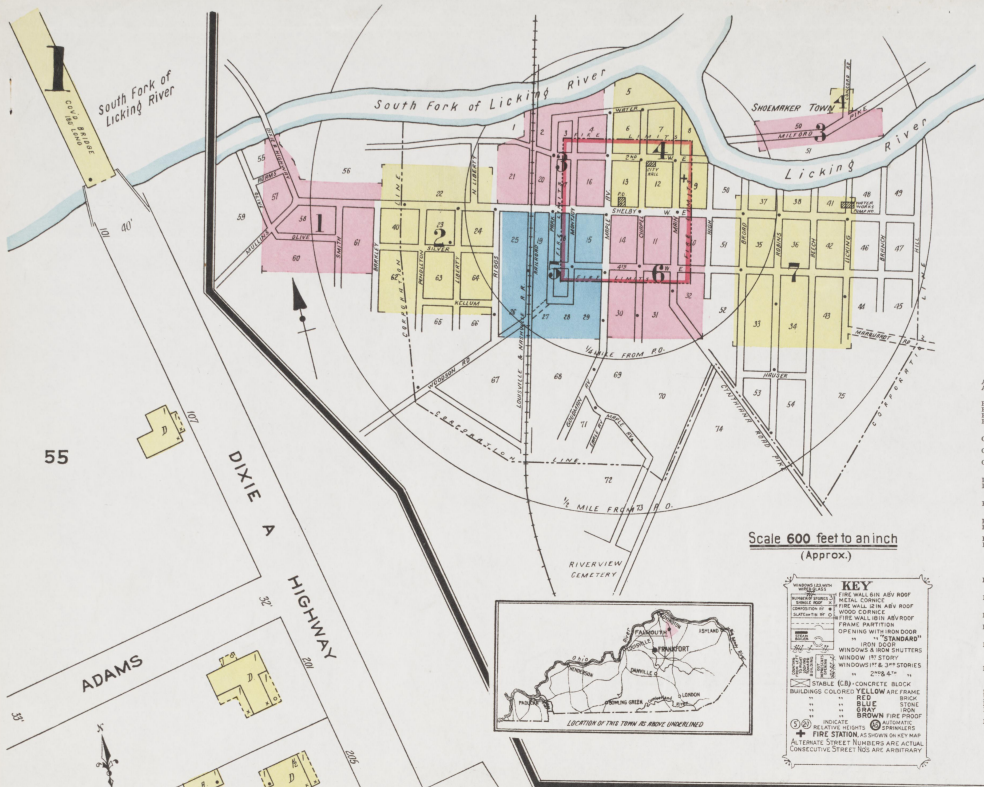


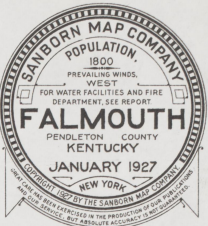
(2515)
(TWO)



WATER FACILITIES:
Water supply, gravity system of water works owned by the City. Pumping station a gravity plant on L. Shelby St. See sheet 7.
2 1/2 inch supply mains carry 30000 gals per 24 hrs. drawing from Licking River. Two water tanks, an 8 inch 10 x 15 mfd gal reservoir situated 1/2 mile S.E. of Pt. 5 miles N.E. & 1/4 S.W. 34 1/4 Sec. 16. Pressure in business section 35 lbs.

FIRE DEPT:
Volunteer company, chief & James L. water combination hose & open truck. 40 gal chern hose 400 ft. hose. 1 hose pump. 58 ft. hose. 1 hand H. L. truck. Bell on fire 3 1/2. 32000 on City Hall operated from Telephone Exchange.

Principal streets paved. Grades easy.
Public lighting: electric.



© D.P. 45565

MAR 15 '27

INDEX

STREETS	SHEET	STREETS	SHEET
Adams.....	A	Oliver.....	O
Addition, see Liberty.....		Park.....	P
Barley.....	B	Pendleton.....	P
Berry.....	100-125	Radiant.....	R
Butterfly Ave.....	100-125	Railroad.....	R
Chapel.....	100-125	Sign.....	S
College Road, at East Pendleton.....	100-125	Schools.....	S
Christmas Pl... ..	100-125	Second St.....	S
Dixie A Highway.....	100-125	Shelby St.....	S
Dixie, see Pendleton.....		Smith.....	S
East, see Robbins.....		South.....	S
Palmer's Road, see Woodson Road.....		Short.....	S
Perry St., see S. School.....		Smith.....	S
Pine St., see W. Second.....		St. Peter.....	S
Poplar.....	100-125	St. Thomas.....	S
W.....	100-125	Thiel.....	T
X.....	100-125	Upperville.....	U
Y.....	100-125	Water.....	W
Z.....	100-125	Ward, see Park.....	
		Woodson Road.....	W

SPECIALS	SHEET
Adams Oil Corp.....	B
Allen Chapel Methodist Episcopal Church.....	A
American Building.....	A
Blair Chapel Methodist Episcopal Church.....	A
Blair School (Colored).....	B
Blair School (White).....	B
Blair School (Co-operative Am'n).....	B
Blair School (Co-operative Am'n).....	B
Blair School (Co-operative Am'n).....	B
Blair School (Co-operative Am'n).....	B

* Indicate only one side of Street shown.

Scale 600 feet to an inch (Approx)

KEY

— BUILDING (CONCRETE BLOCK)
 — BUILDING (BRICK)
 — BUILDING (STONE)
 — BUILDING (WOOD)
 — BUILDING (MATERIAL)
 — BUILDING (COLOR)
 — BUILDING (FRAME)
 — BUILDING (FLOOR)
 — BUILDING (ROOF)
 — BUILDING (WALL)
 — BUILDING (FOUNDATION)
 — BUILDING (CHIMNEY)
 — BUILDING (TOWER)
 — BUILDING (DOME)
 — BUILDING (STAIR)
 — BUILDING (ELEVATOR)
 — BUILDING (MACHINE)
 — BUILDING (EQUIPMENT)
 — BUILDING (FURNITURE)
 — BUILDING (FIXTURE)
 — BUILDING (ACCESSORY)
 — BUILDING (OUTSIDE)

— PAVED STREET
 — GRAVEL STREET
 — DIRT ROAD
 — FILLING STRAIN
 — FILING STRAIN
 — FILING STRAIN
 — FILING STRAIN
 — FILING STRAIN

— FILING STRAIN
 — FILING STRAIN
 — FILING STRAIN
 — FILING STRAIN

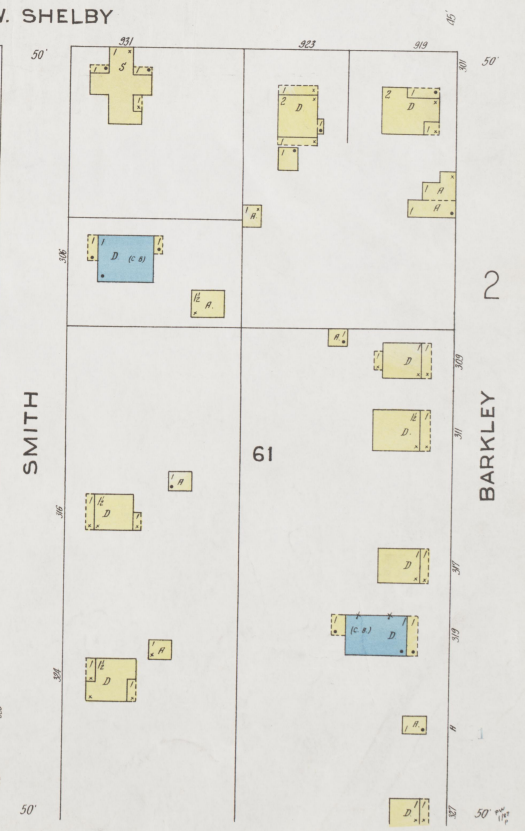
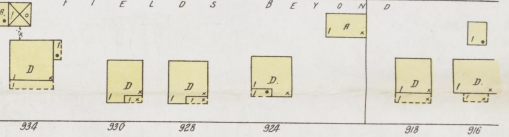
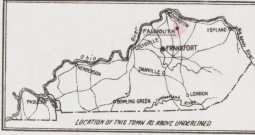
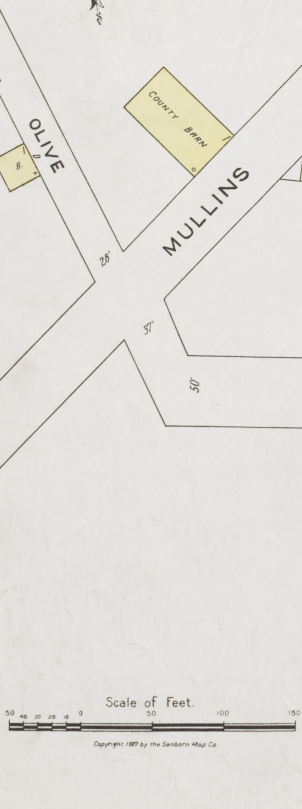
— FILING STRAIN
 — FILING STRAIN
 — FILING STRAIN
 — FILING STRAIN

— FILING STRAIN
 — FILING STRAIN
 — FILING STRAIN
 — FILING STRAIN

— FILING STRAIN
 — FILING STRAIN
 — FILING STRAIN
 — FILING STRAIN

— FILING STRAIN
 — FILING STRAIN
 — FILING STRAIN
 — FILING STRAIN

— FILING STRAIN
 — FILING STRAIN
 — FILING STRAIN
 — FILING STRAIN



2



JAN. 1927
FALMOUTH
KY.

2

(2941)

22

21

3

N. LIBERTY

W. SHELBY (W. MAIN CROSS)

23

24

SILVER

BARKLEY

PENDLETON (DUDLEY)

LIBERTY (ADDITION)

RIGGS

62

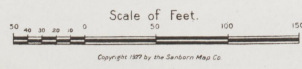
63

64

KELLUM

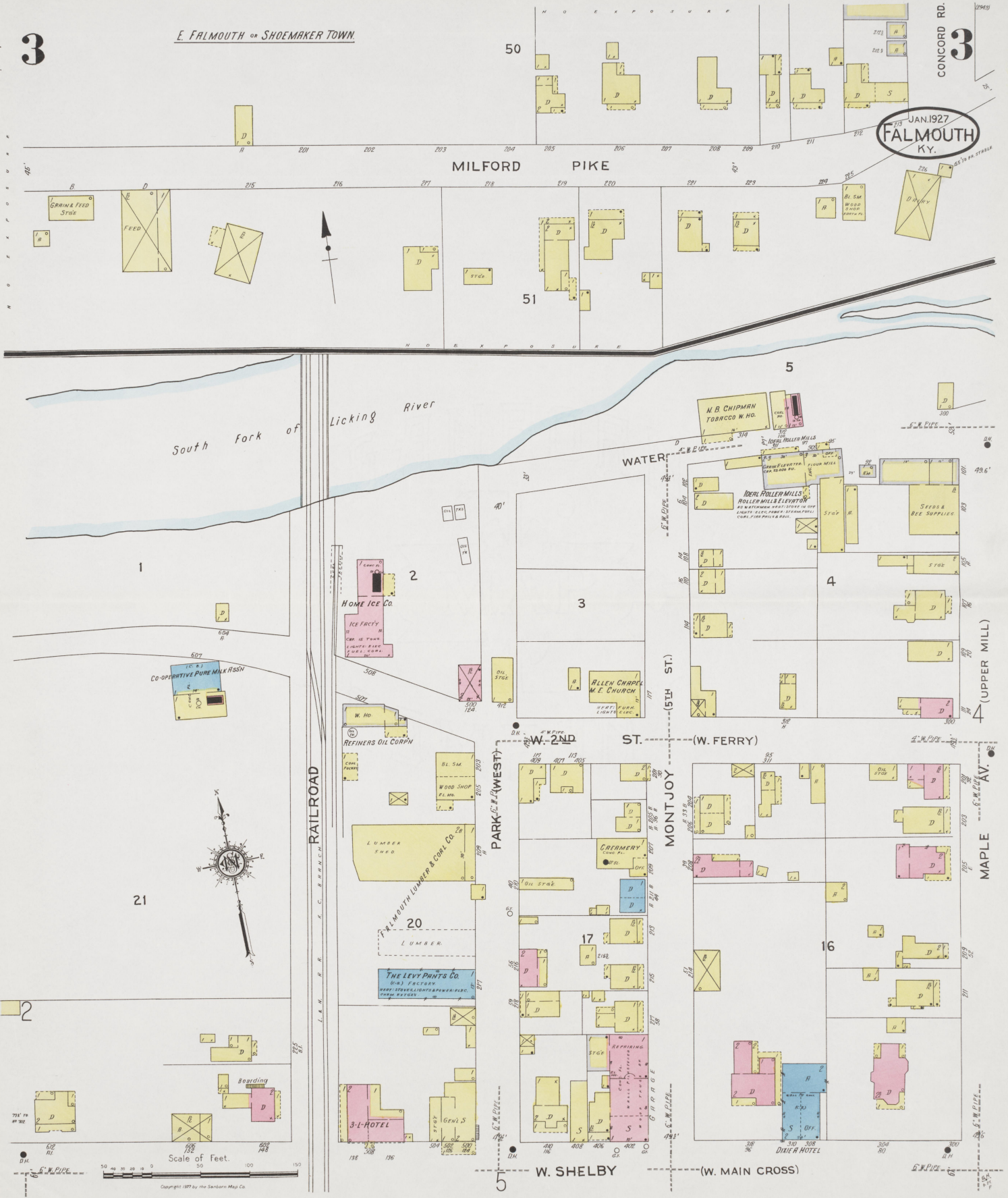
65

66



Copyright 1927 by the Gendarré Map Co.

JAN 1927
FALMOUTH
KY.



Scale of Feet.
Copyright 1927 by the Sanborn Map Co.

4

South Fork of Licking River

5

WATER

6

7

8

JAN. 1927
FALMOUTH
KY.

4

50

PENDLETON FLOUR MILL

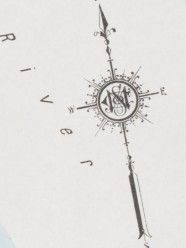
CLIPPY IS BILLS
HEAVY STONE IN TOP FLOOR
W/ LIGHT ELEC. CRANKS &
PILLS

FLOUR MILL

STGE

CONCORD RD.

3 MILFORD PIKE



(UPPER MILL)

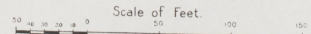
(MILL)

MAIN

NOT OPEN
HIGH

6

E. SHELBY (E. MAIN CROSS)



Copyright 1927 by the Standard Map Co.

W. SHELBY (W. MAIN CROSS)

(2983)

JAN. 1927
FALMOUTH
KY.



6

W. SHELBY

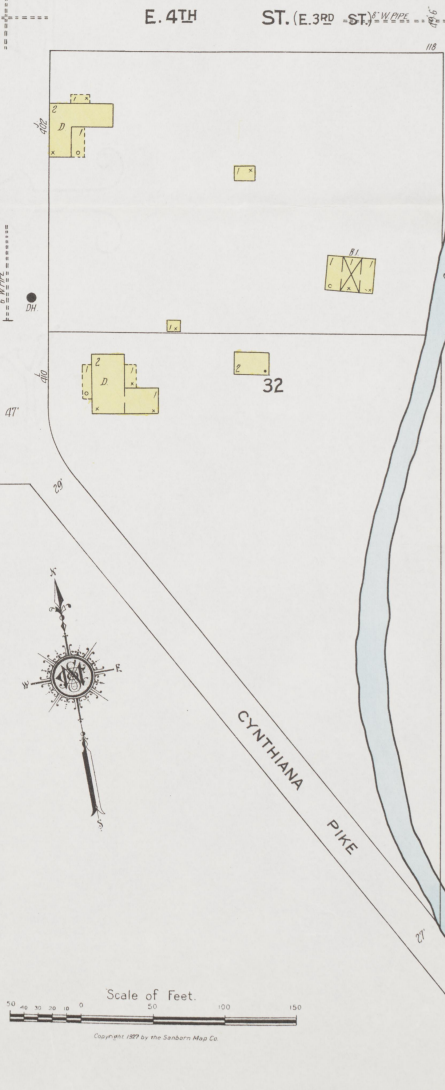
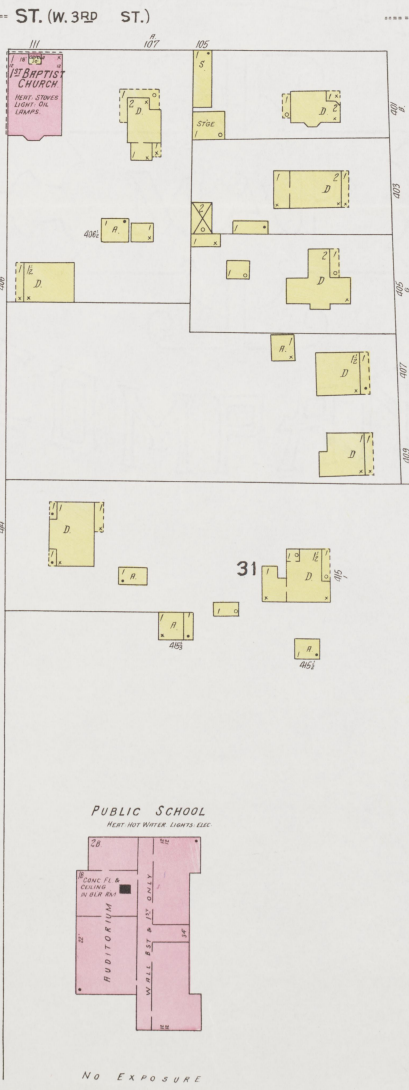
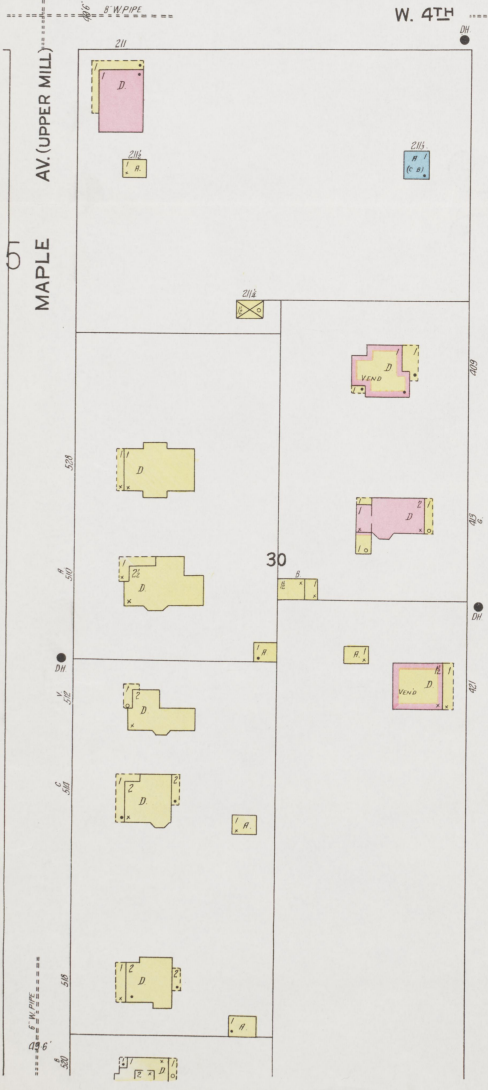
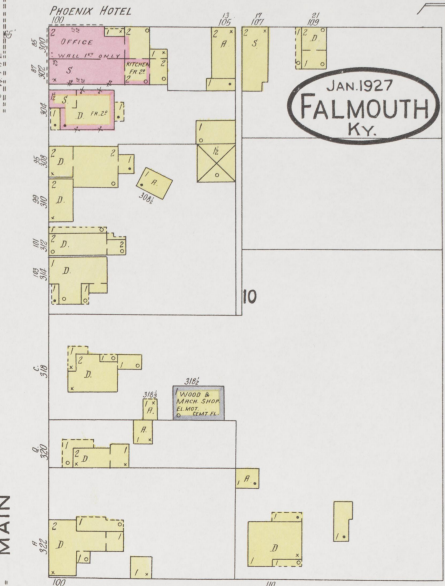
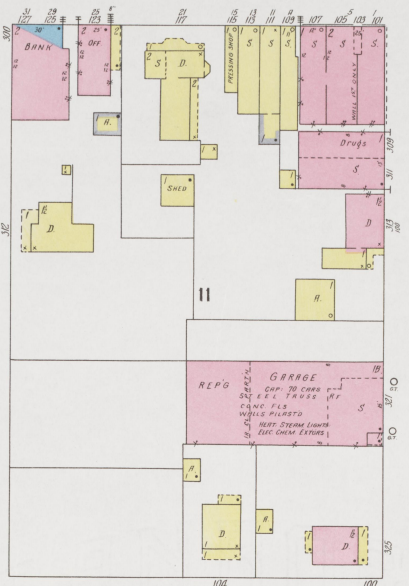
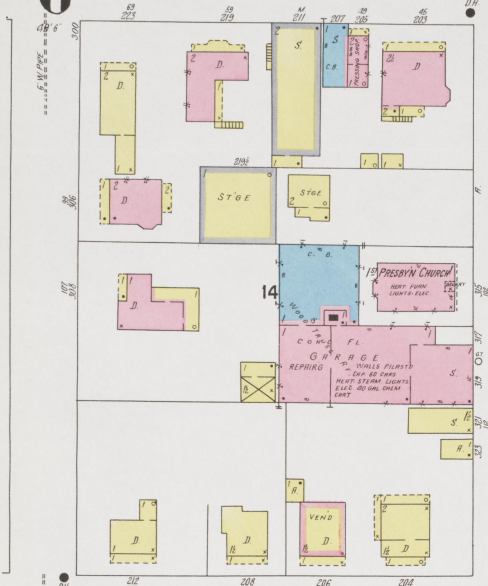
(W. MAIN CROSS)

4

E. SHELBY (E. MAIN CROSS)

6

JAN. 1927
FALMOUTH
KY.



Scale of Feet.
0 50 100 150

Copyright 1927 by the Standard Map Co.

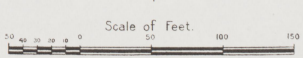
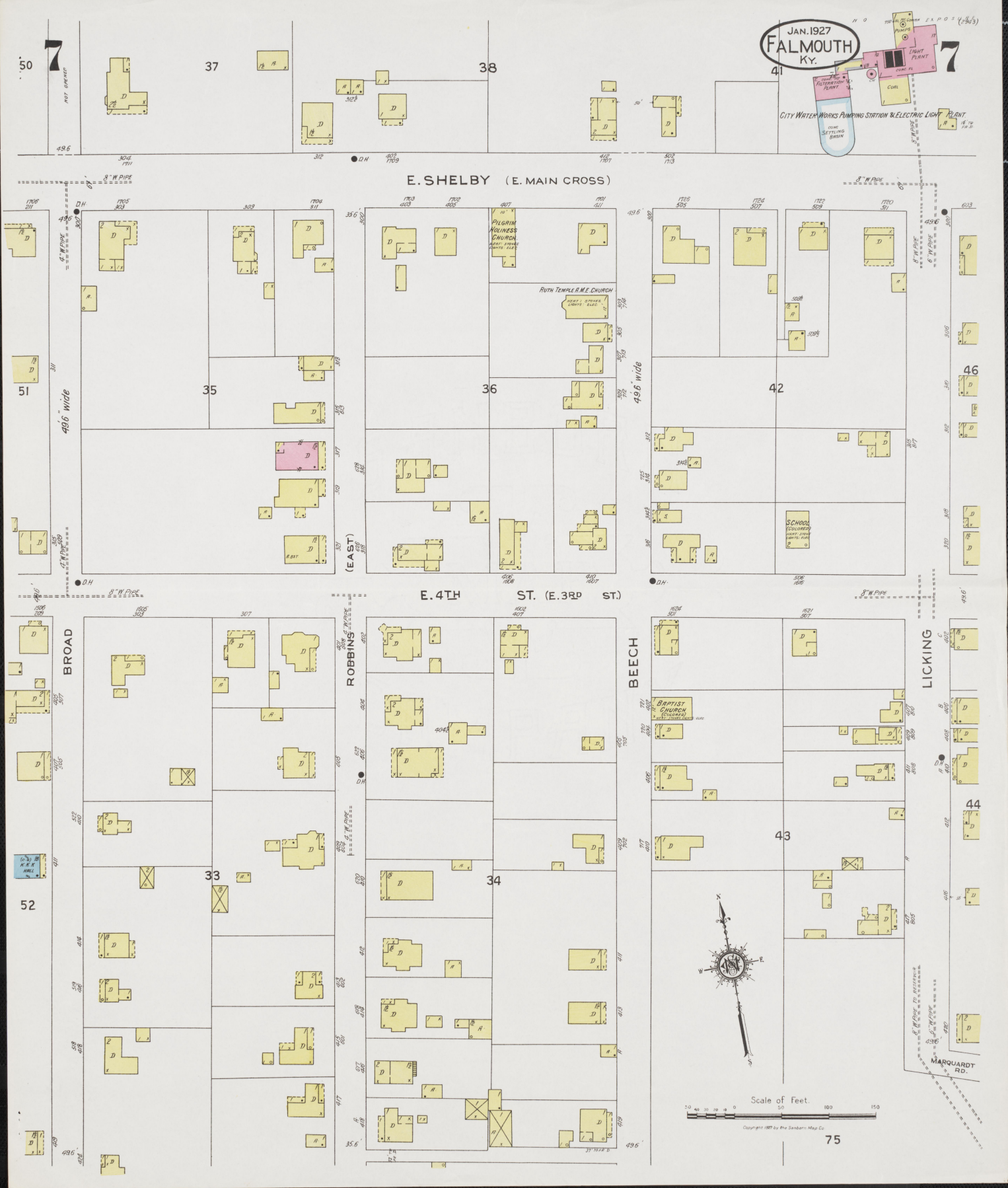
NO EXPOSURE

JAN. 1927
FALMOUTH
KY.

CITY WATER WORKS PUMPING STATION & ELECTRIC LIGHT PLANT

E. SHELBY (E. MAIN CROSS)

E. 4TH ST. (E. 3RD ST.)



Copyright 1927 by the Sandars Map Co.