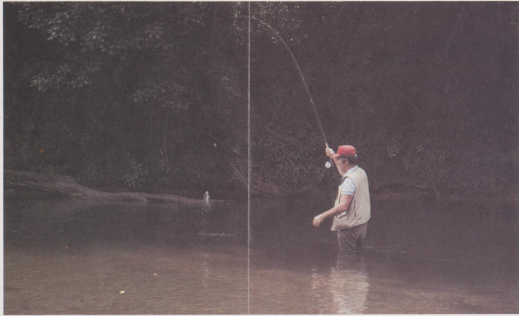


03902 . 487 1975 . 457 . 507

0 562020E 5240 E
POSTING BY MAIL

Uwharrie National Forest North Carolina



THE FOREST CALLED UWHARRIE

The Uwharrie National Forest, named after its mountain range, offers a wide variety of outdoor activities. Hiking, camping, boating, picnicking, canoeing, hunting and fishing are among the most popular.

The Uwharrie is considerably smaller in acreage than most units in the National Forest System. However, Forest Service management must still consider the full range of all its natural resources . . . timber, recreation, wildlife and water to provide for total management in harmony with nature. Examples of this multiple-use management can be seen throughout the Forest where activities such as timber operations and wildlife habitat management co-exist with a minimum of conflict. Many wildlife habitats are actually improved by logging activities while other species rely on the development of planned wildlife openings or fields strategically located for their benefit.

HISTORY OF THE UWHARRIE

As National Forests go, the Uwharrie is not old — dating back only to 1961 when President John F. Kennedy proclaimed 43,000 acres of Montgomery, Randolph, and Davidson Counties the Uwharrie National Forest. With mainly second growth pine and hardwood sprinkled over low hills and rolling uplands, and several meandering rivers — the Uwharrie, Yadkin, and Pee Dee — the Uwharrie National Forest is easy to negotiate. Efforts to consolidate landownership for more effective management have resulted in the addition of approximately 3,000 more acres giving the Uwharrie a total of 46,390 acres.

CAMPING REGULATIONS

The purpose of the rules in effect in National Forest recreation areas is to insure your protection and maximum pleasure.

By observing these regulations, you and your camping neighbors will be able to enjoy the peace and serenity of the forest environment.

GENERAL RULES

1. In developed recreation areas, put vehicles, tents, and trailers only in places provided.
2. Occupy your campsite the first night you arrive; then don't leave it unoccupied for more than 24 hours at a time.
3. Camping is not permitted in day-use areas such as picnicking sites, swimming areas, etc.
4. Length of stay; not more than 14 consecutive days.
5. Only campers permitted inside campgrounds during established night hours (usually post-8).
6. Build fires only in stoves, grills, fireplaces and fire rings.
7. Help preserve all facilities and vegetation. Protect recreation areas for future generations.

FIRES

Forests are vital to our Nation. Practice deliberate fire prevention — always!

1. Extinguish your match; break it in two before discarding.
2. Crush out your smoke; use the ashtray in your vehicle.
3. Stop to smoke. Find a safe place. Stamp out your smoke on mineral soil or rock — never in dry grasses, leaves or needles.
4. Never leave a campfire unattended — put it out before you leave.
5. Be especially careful with fire when the wind is blowing.
6. Never try to "smoke out" game. Look for game elsewhere, give that squirrel (and the forest) another chance.
7. Drown your campfire; turn the sticks and drown them a second time. Make sure the fire is out — DEAD OUT!

A permit is not needed for a campfire. However, you are responsible for your fire and any wildfire that escapes from your campfire. Remember to keep your campfire small and leave it "dead out."



Old gold mine.

CAMPING AND PICNICKING

Badin Lake Campground — Tent and trailer camping, drinking water, toilets, tables and grills.

Uwharrie Hunt Camp — Drinking water, tables, grills, tent pads, chemical toilets.

Cove Boat Ramp — Grills, tables, chemical toilets, boat ramp and parking area.

For the more adventuresome, you may camp anywhere on National Forest land except in designated wildlife fields and in trail head parking lots. Please leave your campsite clean by packing out all trash when you go. Small campfires are permitted, but a camp stove is recommended. Live trees may not be cut — use *dead and down* wood. Be sure your fire is *dead out* when you leave.

GROUP CAMPING

Badin Lake Group Camp — Three separate areas, tables, tent pads, grills, toilets, hiking on lake trail. Reservations are required from the District Ranger's Office, Troy, N.C.



The facilities, programs, and services of the Forest Service and the National Forests are for the use and enjoyment of all people. Discrimination against any person because of race, color, national origin, sex, age, religion, or physical condition is strictly against the policy of the USDA Forest Service, and should be reported to the Secretary of Agriculture, Washington, D.C. 20250.



HUNTING AND FISHING

The Uwharrie is open to hunting and fishing during designated seasons. It is a part of the North Carolina Gameland Program and State regulations apply. Deer, squirrel, quail, and dove are some of the wildlife species native to the area. For information on hunting and fishing regulations call this toll-free number: 1-800-662-7137.

HIKING

Please DO

1. Pack out *all* trash.
2. Use a backpacker stove to eliminate the need for firewood.
3. Use only wood that is "dead and down" for fires.
4. Extinguish campfires with water.
5. Sterilize all drinking water.
6. Bury human waste.
7. Carry a survival kit.
8. "Take only pictures, leave only footprints."

Please DON'T

1. Litter.
2. Kill or injure vegetation.
3. Wash you, your clothes, or utensils in streams.
4. Leave fires unattended.
5. Deface rocks or trees.
6. Fail to leave word with friends or family as to where you plan to hike, and when you will return.



For further information on the Uwharrie National Forest call or write the:

UWHARRIE NATIONAL FOREST
DISTRICT RANGER
RT. 3, BOX 470
TROY, N.C. 27711
PHONE: 919-578-8361
(2 miles east of Troy on N.C. 27)

SUPERVISOR'S OFFICE
NATIONAL FORESTS IN NORTH CAROLINA
100 OTIS ST.
P.O. BOX 276
ASHEVILLE, N.C. 28802
PHONE: 704-253-2332



PLEASE



PREVENT FOREST FIRES

The Forest Service, U.S. Department of Agriculture, is dedicated to the principle of multiple use management of the Nation's forest resources for sustained yields of wood, water, forage, wildlife, and recreation. Through forestry research, cooperation with the States and private forest owners, and management of the National Forests and National Grasslands, it strives — as directed by Congress — to provide increasingly greater service to a growing Nation.

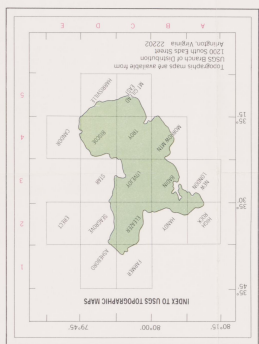


U.S. DEPARTMENT OF AGRICULTURE
 FOREST SERVICE
 L. M. FETTERSON, CHIEF
 NORTH CAROLINA
 1955

LEGEND

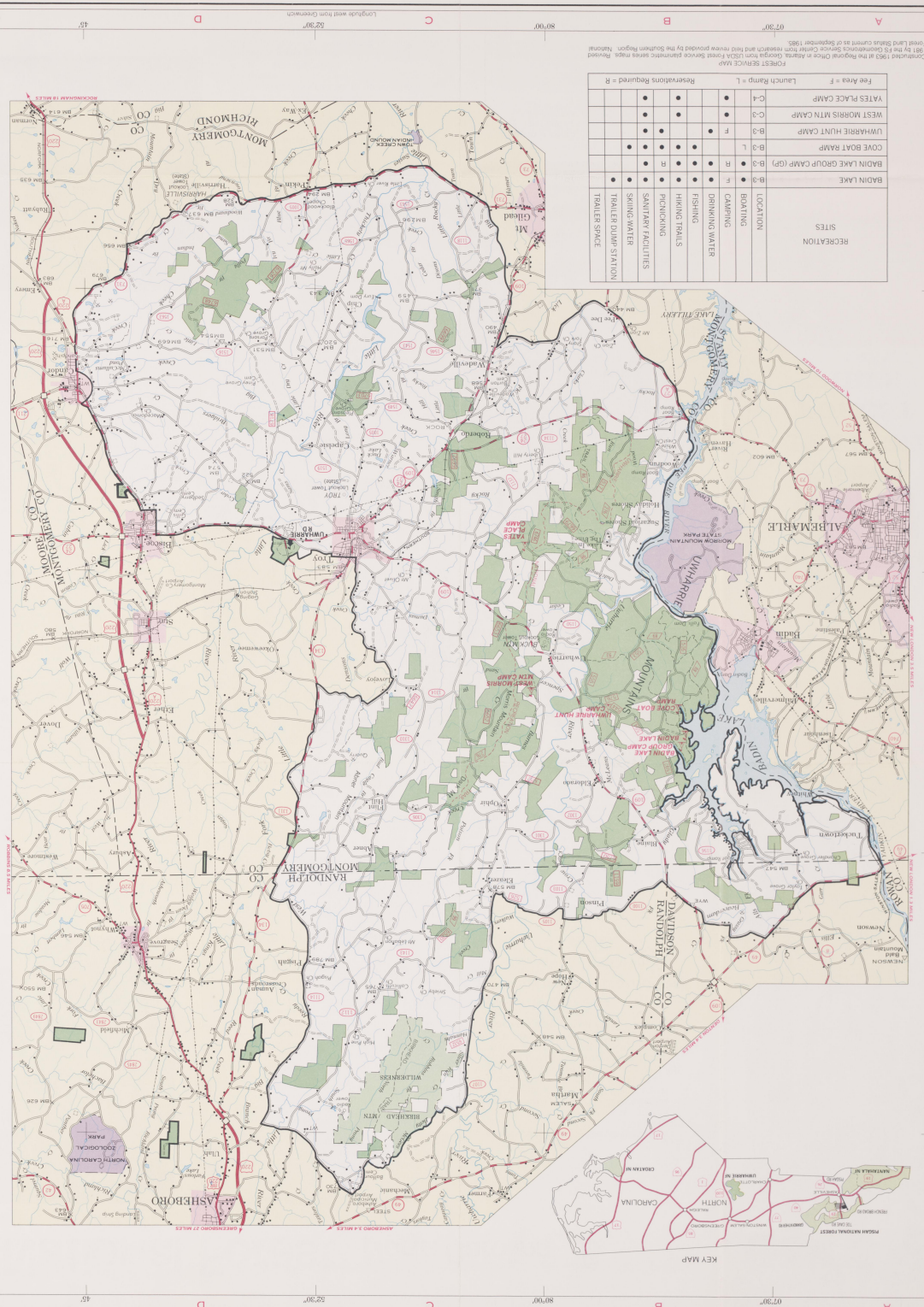
Scale 1:250,000
 1 2 3 4 5 Miles
 1 2 3 4 5 Kilometers

- Natural Forest Land
- Natural Forest Boundary
- Primary Highway
- Secondary Highway
- Impaired Light Duty
- Unimproved Dirt
- Ranger District Office
- Reservation State Forest Service
- National Recreation Trail
- U.S. Parkway
- Local Water
- Building, Church, School
- Center
- State Road
- Ford Trail
- Secondary State Highway
- Trail



FOREST SUPERVISOR'S OFFICE
 P. O. BOX 2750
 ASHEVILLE, N. C. 28802

UWHARRIE N.F.
 DRAWER F
 TRYON, N. C. 27731



RECREATION SITES

LOCATION	BOATING	CAMPING	DRINKING WATER	FISHING	HIKING TRAILS	PICKNICKING	SANITARY FACILITIES	SHADE	SUNSHADE	TRAILER/BOAT STATION	TRAILER SPACE
Badin Lake	●	●	●	●	●	●	●	●	●	●	●
Badin Lake Group Camp (GP)	●	●	●	●	●	●	●	●	●	●	●
Cove Boat Ramp	●		●	●	●	●	●	●	●	●	●
Uwharrie Hunt Camp	●	●	●	●	●	●	●	●	●	●	●
West Morris Mt. Camp	●	●	●	●	●	●	●	●	●	●	●
Yates Place Camp	●	●	●	●	●	●	●	●	●	●	●

Free Area = F
 Lunch Ramp = L
 Reservations Required = R

FOREST SERVICE MAP
 Contained facts in this Regional Office Forest Service Information Sheet were prepared by the Southern Region, National Forest System, Asheville District Office, Asheville, North Carolina, and the Asheville District Office, Asheville, North Carolina, and the Asheville District Office, Asheville, North Carolina. This map is for general information only and should not be used for legal purposes.



1927 North American Datum
 Mountain projection