



**KENTUCKY**

**CLEMSON**

NOVEMBER 15 - 1952 - STOLL FIELD

OFFICIAL PROGRAM - - TWENTY-FIVE CENTS

*Tom Kiverson*





DOROTHY COLLINS,  
"The Sweetheart of Lucky Strike,"  
says:

Be Happy-  
**GO LUCKY!**

**LUCKIES  
TASTE  
BETTER!**



**L.S./M.F.T.-Lucky Strike Means Fine Tobacco**

COPR., THE AMERICAN TOBACCO COMPANY





# KENTUCKY *(Wildcats)*

*versus*

# Clemson *(Tigers)*

## Stoll Field—November 15, 1952

---

### CONTENTS

	Page
Governor Lawrence W. Wetherby .....	3
U.K. President Herman L. Donovan .....	3
Athletic Director Bernie Shively .....	3
Coach Paul Bryant .....	3
Clemson President and Head Football Coach .....	4
Clemson Players .....	5, 29
Kentucky Coaching Staff .....	6
Official Signals .....	7
Kentucky 1952 Schedule and Past Scores .....	8
Kentucky Players .....	10-35
Kentucky 1951 Record .....	10
Kentucky Player Roster .....	18
Clemson Player Roster .....	19
1952 Kentucky Varsity Roster .....	21
Kentucky Squad Picture, Ticket Information .....	32
Lexington Salesmen's Club .....	33

---

### OFFICIAL KENTUCKY FOOTBALL PROGRAM

1952

No. 5

Edited by Ken Kuhn, Sports Publicity Editor  
 Published by University of Kentucky Athletics Association  
 Represented for National Advertising by Don Spencer Co., New York



# WENNEKER'S

## "Shoes of Champions"

You don't have to be a champion to wear fine shoes from WENNEKER'S but you can rest assured that any shoe purchased at this friendly store will be of champion quality and appearance. Save 25 to 50% on FAMOUS NAME BRAND SHOES for both men and women. For years WENNEKER'S has brought you FAMOUS BRANDS at LOWEST PRICES. Friendly service at WENNEKER'S is more than just plain courtesy, it's a fact! Ask the man who buys his shoes at WENNEKER'S. He'll tell you that nowhere in the Bluegrass will you find better values, higher quality, and more friendly service.

Featured At Wenneker's  
**WINTHROP**  
 FAMOUS BRAND SHOES



Bob Gain Visits Wenneker's.



You don't have to make a purchase to enjoy the friendly atmosphere at WENNEKER'S. Drop in any time. Have a "coke", and enjoy chatting with your favorite sports personalities who often visit WENNEKER'S. You are always welcome.

All-American Bob Gain, shown above, knows the value of endurance and that's why he chooses the beautiful shell cordovan pictured at left. Here is a wonderful shoe at a wonderful price.

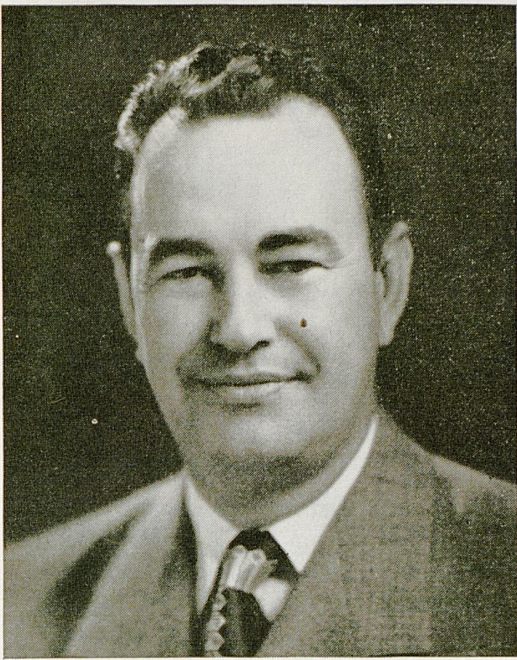
### For the Ladies!

First in fashion, and first in value for the ladies also is WENNEKER'S . . . You'll find your favorite FAMOUS NAME BRAND SHOES at 25 to 50% savings. Be wise. Shop at WENNEKER'S and enjoy wearing **two** pairs of famous brand name shoes for the price of **one**.

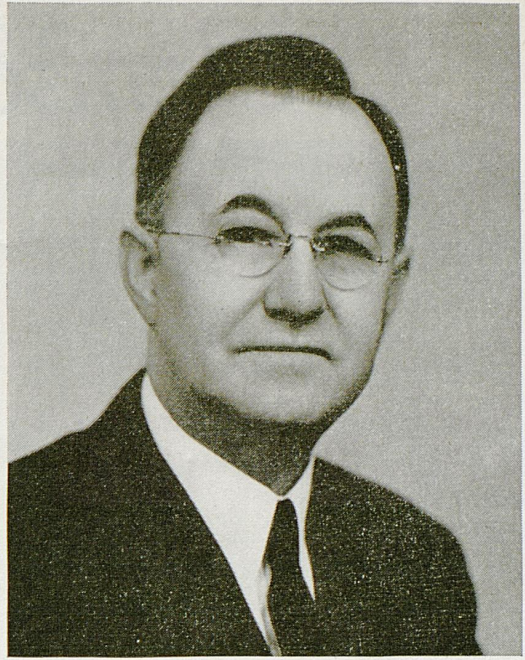


153 EAST MAIN STREET  
 in LEXINGTON





**THE HONORABLE  
LAWRENCE W. WETHERBY**  
Governor of Kentucky



**DR. HERMAN LEE DONOVAN**  
President  
University of Kentucky

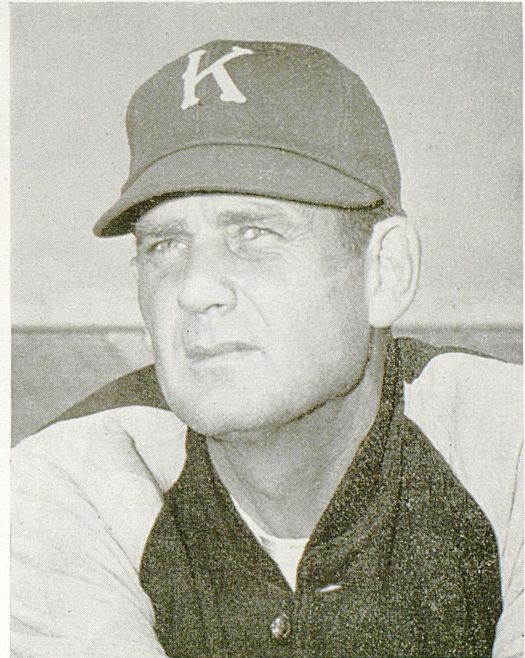
---

YOU CANNOT HAVE A GREAT STATE WITHOUT A GREAT STATE UNIVERSITY

---



**BERNIE A. SHIVELY**  
Director of Athletics



**PAUL BRYANT**  
Head Football Coach



# Clemson College



**DR. R. F. POOLE**  
President, Clemson College

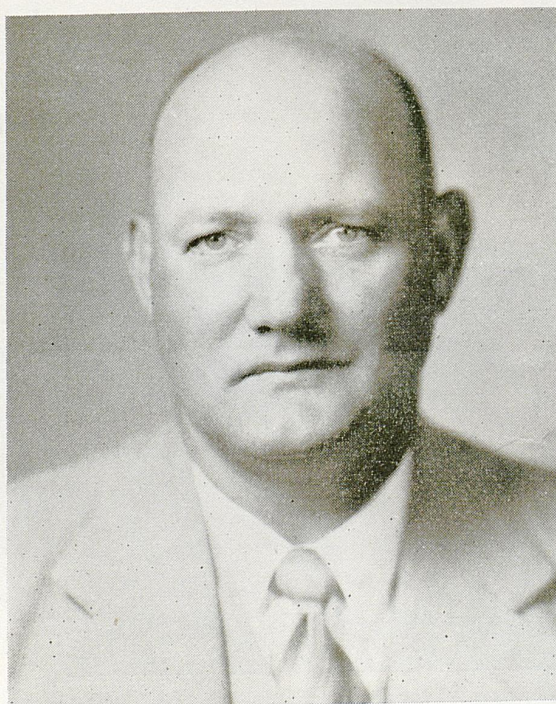
## SERIES HISTORY

Only five previous meetings with Clemson College are on record, but it's likely the 1952 game will lead to lengthy grid relations. Tobacco-chewing Frank Howard, who has guided the Tigers to three bowls in the past four seasons, appears certain to produce another powerhouse this year. Clemson is outlawed from play in the Southern Conference due to unauthorized play in the Gator Bowl last New Year's Day, but that means only new fields for the Tigers to conquer. And reports indicate Clemson will be bowl-worthy again with a powerful single wing offense built around all-conference tailback Billy Hair. Even cagey Coach Howard admits to the prospects of a "better offensive backfield" and a defensive unit rated "about the same" as last year.

### Past Scores With Kentucky

	Ky.	Clemson
1925 .....	19	6
1929 .....	40	6
1934 .....	7	0
1936 .....	7	6
1938 .....	0	14

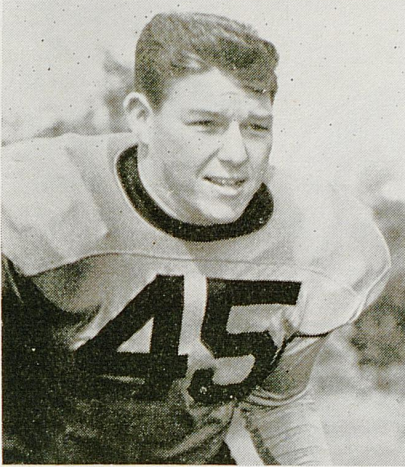
(Kentucky won 4, Clemson won 1)



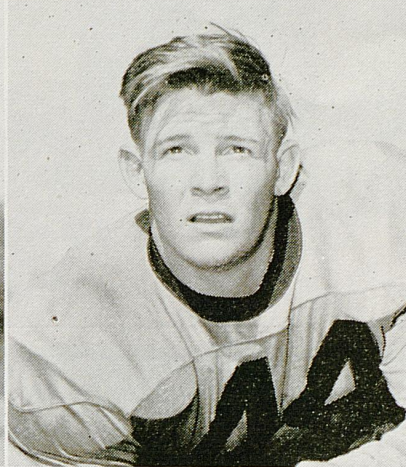
**FRANK HOWARD**  
Head Coach and Director of Athletics



# — TIGERS —



EARL WRIGHTENBERRY—T



NATHAN GRESSETTE—T



CO-CAPT. GEORGE RODGERS—BB



BARCLAY CRAWFORD—G



TOM BARTON—G



CO-CAPT. BILLY HAIR—TB



JOE LaMONTAGNE—G



FRED KNOEBEL—HB



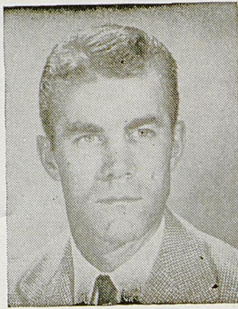
J. C. HUDSON—G

(OTHER CLEMSON PLAYERS ON PAGE 29)





CLARENCE UNDERWOOD

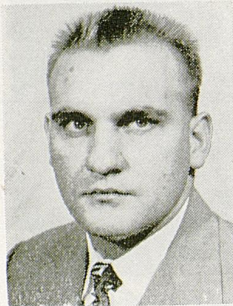


ERMAL ALLEN



JIM OWENS

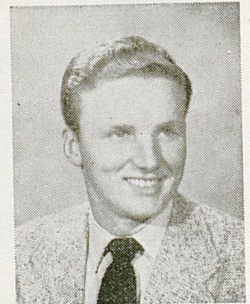
## Kentucky Coaching Staff



JERRY CLAIBORNE



PHIL CUTCHIN



PAUL DIETZEL

**FRED BRYANT MOTOR CO.**  
Good Luck and Good Wishes To The *WILDCATS*

'6' — OLDSMOBILE — '8'

Union Station Viaduct

Phone 2-7222

SCORES OVER STOLL FIELD PUBLIC - ADDRESS SYSTEM COME TO YOU THROUGH THE COURTESY OF THE LEXINGTON NEWSPAPERS



OFFICIAL SIGNALS ADOPTED BY NATIONAL COLLEGIATE ATHLETIC ASSOCIATION

For the best signal in **TV...**

see



**BLACK-DAYLITE  
TELEVISION**



Huge screen, beautiful compact cabinet and on-the-spot picture realism—it's G-E Model 21T4. Go into a huddle with your dealer—fast. Ask him to demonstrate the features.

When you can't get to the game,  
the next best thing is G-E Model 21T4!



1. OFFSIDE



2. ILLEGAL POSITION OR PROCEDURE



3. ILLEGAL MOTION OR SHIFT



4. DELAY OF GAME



5. PERSONAL FOUL



6. ROUGHNESS AND PILING ON



7. CLIPPING



8. ROUGHING THE KICKER



9. UNSPORTSMANLIKE CONDUCT



10. DEFENSIVE HOLDING



11. ILLEGAL USE OF HANDS AND ARMS



12. INTENTIONAL GROUNDING



13. ILLEGALLY PASSING OR HANDING BALL FORWARD



14. FORWARD PASS OR KICK CATCHING INTERFERENCE



15. INELIGIBLE RECEIVER DOWN FIELD ON PASS



22. TIME-OUT



21. SAFETY



20. TOUCHDOWN OR FIELD GOAL



19. BALL DEAD; IF HAND IS MOVED FROM SIDE, TO SIDE: TOUCHBACK



18. CRAWLING, HELPING THE RUNNER OR INTERLOCKED INTERFERENCE



17. INCOMPLETE FORWARD PASS, PENALTY DECLINED, NO PLAY OR NO SCORE



16. BALL ILLEGALLY TOUCHED, KICKED OR BATTED

Wm. J. BROWN, Jr. — 311 E. Main St. & 800 Euclid Ave. — Lexington, Ky.





## 1952 Cotton Bowl Champions

### THE WILDCATS' 1952 SCHEDULE

Date	Opponent and opponent's score	Ky. score	Place
Sept. 20	Villanova College 25	6	Lexington (N)
Sept. 27	Mississippi 13	13	Lexington
Oct. 4	Texas A & M 7	10	College Station, Tex. (N)
Oct. 11	Louisiana State 34	7	Lexington
Oct. 18	Mississippi State 27	14	State College, Miss.
Oct. 25	Cincinnati 6	14	Cincinnati
Oct. 31	Miami (Fla.) 0	29	Miami, Fla. (Fri.-N)
Nov. 8	Tulane 6	27	Lexington
Nov. 15	Clemson		Lexington
Nov. 22	Tennessee		Knoxville, Tenn.
Dec. 6	Florida		Gainesville, Fla.

Home Game Starting Times — Day: 2 p.m. — Night: 8 p.m.

SCORES OVER STOLL FIELD PUBLIC - ADDRESS SYSTEM COME TO YOU THROUGH THE COURTESY OF THE LEXINGTON NEWSPAPERS



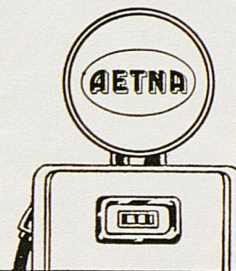
WE'RE AGAIN *Broadcasting* ALL "WILDCAT" GAMES

The ASHLAND-AETNA State-Wide Sports Network is carrying this game to Kentucky's host of fans. If you can't attend every game, listen to one of more than 25 stations broadcasting play-by-play accounts

STOP AT ANY OF OUR STATIONS FOR



Free "WILDCAT"  
Team Picture



And Schedule of All Game Broadcasts

SPONSORED BY  
**ASHLAND OIL & REFINING COMPANY**  
AND  
**AETNA OIL COMPANY**



J. B. Faulconer  
Kentucky's Favorite  
Sportscaster

When you can't attend  
the Game-HEAR IT ON

5000 **WLAD** WATT

CENTRAL KENTUCKY'S MOST POWERFUL STATION  
OR  
Your local Ashland-Aetna Sports Network Station

→ **Your  
Ashland-Aetna  
Sports Network  
Stations** →

WLAP—Lexington (Key Station)

WCMJ—Ashland  
WLBK—Bowling Green  
WLCK—Campbellsville  
WCTT—Corbin  
WZIP—Covington  
WAIN—Columbia  
WHIR—Danville  
WIEL—Elizabethtown

WFUL—Fulton  
WKAY—Glasgow  
WHLN—Harlan  
WKIC—Hazard  
WSON—Henderson  
WHOP—Hopkinsville  
WINN—Louisville  
WFMW—Madisonville  
WKTU—Mayfield  
WFTM—Maysville

WNBS—Murray  
WOMI—Owensboro  
WKYB—Paducah  
WSIP—Paintsville  
WPKE—Pikeville  
WPKY—Princeton  
WSFC—Somerset  
WTCJ—Tell City, Ind.  
WTJS—Jackson, Tenn.  
WHJC—Matewan, W. Va.

"THE OFFICIAL WATCH FOR TIMING THIS GAME IS  
LONGINES — THE WORLD'S MOST HONORED WATCH"



## 1951 RESULTS

(Won 8 — Lost 4)

Team	Place	Ky.	Opp.	Attend.
Tennessee Tech	(H)	72	13	26,000
Texas	(A)	6	7	47,000
Mississippi <sup>o</sup>	(A)	17	21	20,000
Georgia Tech <sup>o</sup>	(H)	7	13	35,000
Miss. State <sup>o</sup>	(H)	27	0	31,000
Villanova	(H)	35	13	35,000
Florida <sup>o</sup>	(A)	14	6	31,000
Miami (Fla.)	(H)	32	0	28,000
Tulane <sup>o</sup>	(A)	37	0	37,000
George Washington	(H)	47	13	20,000
Tennessee <sup>o</sup>	(H)	0	28	36,000

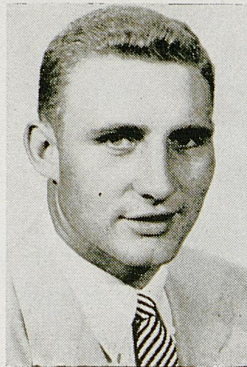
### COTTON BOWL

Texas Christian	20	7	75,347
-----------------	----	---	--------

TOTALS	314	121	421,347
--------	-----	-----	---------

<sup>o</sup>Conference Game Home Attendance—211,000

### COTTON BOWL CHAMPIONS

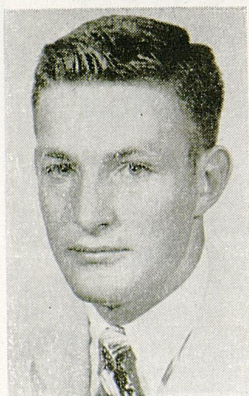


JOHN GRIGGS

Captain

Senior — Center

Morganfield, Ky.



BOB FRY

Alternate Captain

Senior — Tackle

Cincinnati, Ohio



SCORES OVER STOLL FIELD PUBLIC - ADDRESS SYSTEM COME TO YOU THROUGH THE COURTESY OF THE LEXINGTON NEWSPAPERS



# CLAUDE SULLIVAN

FOLLOWS THE WILDCATS  
AT HOME & AWAY

● ALL GAMES ●

TUNE  
IN

# WVLK

# 590

ON EVERY DIAL



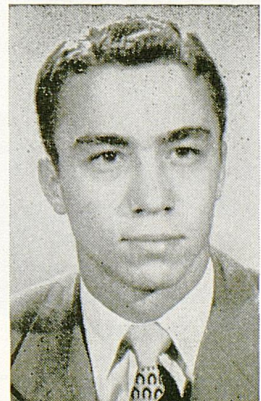
STEVE MEILINGER  
Junior — End  
Bethlehem, Pa.



FRANK FULLER  
Senior — Tackle  
DuBois, Pa.



HARRY JONES  
Senior — Halfback  
Louisville, Ky.



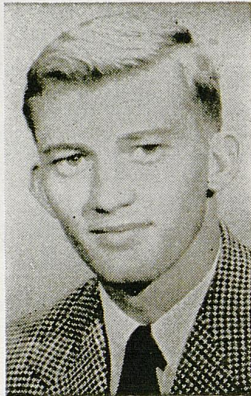
LARRY JONES  
Senior — Quarterback  
Louisville, Ky.

FOR COMPLETE REPORTS ON THIS GAME AND OTHERS BEING PLAYED  
TODAY, READ THE SPORTS SECTION OF SUNDAY HERALD - LEADER





JIM PROFFITT  
Junior — End  
Louisville, Ky.



TOMMY ADKINS  
Junior — Linebacker  
Corbin, Ky.



**Do You  
Motor?  
Travel?**

Attend football  
games and other  
athletic events?  
Then examine a

Bausch & Lomb Binocular at Tinder-Krauss-Tinder. Note its great light gathering power, wide field, ease of use, and rugged construction. Enthusiastically recommended by sportsmen, Army and Navy officers, aviators and other users as "The World's Best By Any Test."

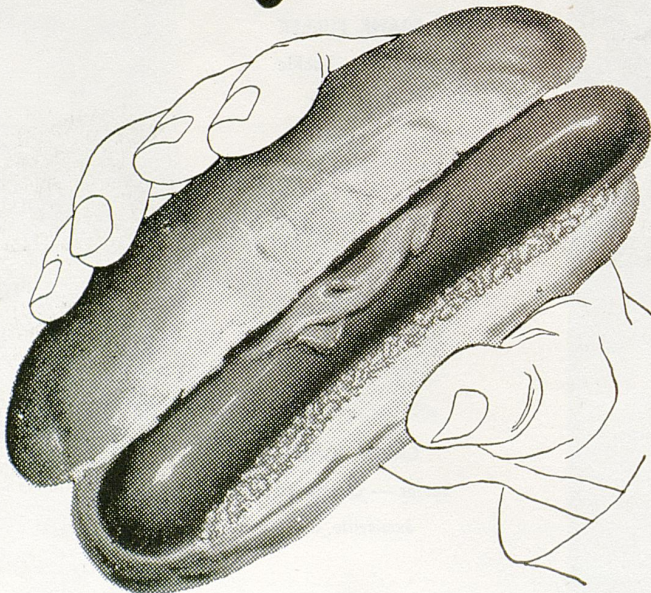
**Tinder-Krauss-Tinder**

**Opticians — Photographic Supplies**

145 N. Upper Street

Lexington

**Take a big juicy bite!**



**ARMOUR**

**Franks**

Made Fresh Daily of  
Fine Beef and Pork in  
a Nearby Armour  
Kitchen

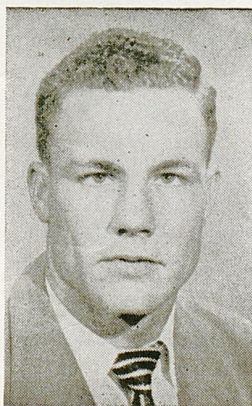
SCORES OVER STOLL FIELD PUBLIC - ADDRESS SYSTEM COME TO  
YOU THROUGH THE COURTESY OF THE LEXINGTON NEWSPAPERS



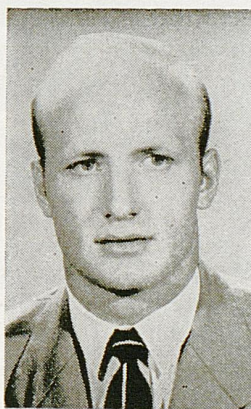
UNDEFEATED IMMORTALS OF 1898.



Undeclared, untied, and un-scored upon—that's the record of the famous immortals of 1898. Then as now, GRAVES, COX & COMPANY has always been famous for excellence without extravagance in men's and boys' wearing apparel.



**CALVIN SMITH**  
Junior — Tackle  
Barbourville, Ky.



**RAY CORRELL**  
Junior — Guard  
Somerset, Ky.



**BILL SIMPKINS**  
Sophomore — Center  
Griffin, Ga.

**FOR COMPLETE REPORTS ON THIS GAME AND OTHERS BEING PLAYED TODAY, READ THE SPORTS SECTION OF SUNDAY HERALD-LEADER**



OFFICIAL WATCH FOR THIS GAME



*Longines*



*The World's Most Honored Watch*

ACCEPTED AS OFFICIAL WATCH  
FOR TIMING  
CHAMPIONSHIP SPORTS EVENTS  
IN ALL FIELDS ALL OVER THE WORLD



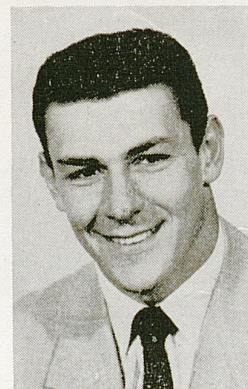
*Product of  
Longines-Wittnauer Watch Company*



TOM FILLION  
Junior — Halfback  
Owensboro, Ky.



NEIL LOWRY  
Sophomore — Guard  
Youngstown, Ohio



RALPH PAOLONE  
Junior — Fullback  
New Castle, Pa.

SCORES OVER STOLL FIELD PUBLIC - ADDRESS SYSTEM COME TO  
YOU THROUGH THE COURTESY OF THE LEXINGTON NEWSPAPERS







## SEASONS SMARTEST STYLES

Spark your College Life, when you follow the Route to Fashion.

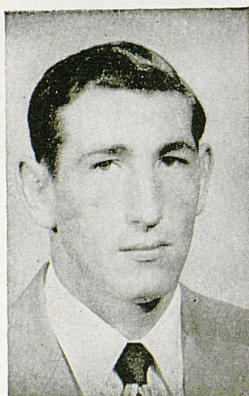
Imported tweeds, sheer woolens, jersey, fabulous silk and cashmere selected from the markets of the world.

Yours to choose from

Coats . . . Suits . . . Dresses . . . Separates . . . Accessories

at

114 Esplanade **Dorothea Gaines** Dial 4-1525  
(INCORPORATED)



HAROLD GRUNER  
Junior — Quarterback  
Louisville, Ky.



ALLEN FELCH  
Sophomore — Fullback  
Marinette, Wis.

## *The Lafayette Hotel*

---

Extends a Cordial Welcome and an Invitation to the Football Fans to meet with us after the Games. Renew old Friendships, greet new friends, and enjoy the spirit of good fellowship that abounds.

80% Air Conditioned

SCORES OVER STOLL FIELD PUBLIC - ADDRESS SYSTEM COME TO  
YOU THROUGH THE COURTESY OF THE LEXINGTON NEWSPAPERS



Laundry

Dry Cleaning

*DeBoor*

15 Per Cent Discount

and

Curb Service

AT

265 EUCLID AVE.

PHONE 3-0235

880 E. HIGH ST.

PHONE 2-7046



# FOR YOU

# FIRST PREMIUM REGULAR

### KENTUCKY SQUAD

No.	Name	Pos.	Age	Ht.	Wt.
1B	L. Jones '53	HB-QB	21	5-10	158
11	Mayo '56	HB	17	6-0	168
12	Carter '55	HB	19	5-10	170
14	Mills '56	HB	17	6-1	175
15	Rouse '56	HB	17	5-11	180
16	Hunt '54	QB	21	6-1	161
17	Shatto '56	HB	18	6-2	187
18	Callahan '56	HB	18	5-10	180
19	Hooper '55	HB	19	5-9	165
20	Rushing '55	HB	19	6-0	178
21	Fillion '54	HB	22	5-11	176
22	Moloney '56	HB	17	5-11	165
25	Jirschele '55	HB	19	6-1	194
26	Mitchell '55	HB	20	5-7	152
27	Hanley '55	LB	20	5-10	170
28	Willard '54	Saf.	21	5-11	150
29	Platt '54	HB	21	5-10	175
30	Ratcliffe '55	G	20	5-9	180
31	Adkins '54	LB	20	6-0	189
33	Karibo '55	HB	19	5-6	145
34	Felch '55	FB	20	5-10	195
35	Paolone '54	HB-FB	21	6-0	204
36	Philpot '56	LB	18	6-0	180
37	Tracy '56	FB	17	6-0	200
38	Chiccino '55	FB	20	6-0	175
50	Bell '56	HB	18	5-8	160
51	Strange '56	C	18	6-0	200
52	Simpkins '55	C	19	6-0	180
54	Bassitt '56	Kick	18	6-3	190
55	Griggs '53	E-C	21	6-2	200
60	Bailey '55	G	20	5-8	190
61	Dyer '54	G	22	6-1	192
62	Curnutte '56	G	17	5-9	185
63	Schenk '54	T-G	21	6-1	212
64	Black '55	T	20	6-3	210
65	Correll '54	G	21	6-1	205
66	Koch '55	G	20	5-10	180
67	Lowry '55	G	20	6-0	190
70	Burrus '55	T	20	6-1	212
71	Fry '53	T	21	6-4	211
72	Baldwin '53	T	22	6-1	197
73	Stuart '56	G	17	6-1	185
74	Mingis '56	T	19	6-0	205
75	Fuller '53	T	23	6-4	212
76	Bivin '56	G	18	6-1	200
80	Meilinger '54	QB-E	20	6-2	212
81	Beatty '56	E	18	6-0	170
82	Hennessey '55	E	21	5-9	165
83	Kirk '55	E	19	6-4	200
84	Schnellenberger '56	E	17	6-1	195
87	Proffitt '54	E	20	6-2	200
88	Carlign '55	E	18	6-1	178
89	Zampino '55	HB-E	19	6-1	189



... Much M

# CHESTER

LARGEST SELLING CIGARETTE



# PREMIUM QUALITY CIGARETTE MILDER AND KING-SIZE!



**MILDER**  
**CHESTERFIELD**  
CIGARETTE IN AMERICA'S COLLEGES

## CLEMSON SQUAD

No.	Name	Pos.	Age	Ht.	Wt.
20	Cook '53	TB	21	5-9	153
21	Paredes '54	TB	22	5-8	174
22	King '56	TB	18	5-11	175
23	Hankinson '55	FB	19	5-11	190
25	Hudson '53	RG	22	6-2	186
26	Ross '55	WB	20	5-10	171
27	Shown '55	BB	19	5-11	185
28	Noel '53	LE	21	6-1	190
29	Whitten '55	WB	19	5-10	179
30	George '55	WB	20	6-0	177
31	L. Gressette '54	FB	22	6-0	193
32	Ward '53	WB	21	5-8	163
34	Avery '53	C	19	6-0	190
35	Smalls '54	C	23	6-1½	190
36	Wade '53	WB	22	5-10	172
37	Barton '53	LG	23	6-2	193
38	O'Dell '56	FB	18	5-11	191
40	Quarles '54	BB	21	5-10	188
42	Wyatt '55	LG	20	5-10	193
43	Mattos '55	RG	20	6-1	201
44	N. Gressette '54	LT	21	6-1	211
45	Wrightenberry '53	RT	22	6-2	209
46	Pate '54	BB	21	5-11	190
47	Byrd '53	RT	20	6-2	204
48	Rodgers '53	LG	21	5-9	179
49	Moore '55	WB	21	5-10	165
50	Crawford '53	RG	22	5-10	191
51	White '55	LT	20	6-3	215
53	Vite '54	RE	22	6-1	181
54	Freudenberger '53	RT	22	6-3	200
55	Hubert '54	TB	22	6-0	183
56	Moxley '55	TB	20	6-0	172
57	Baker '53	RE	20	6-2	173
59	Thompson '53	BB	22	5-9	191
60	Crain '55	RT	19	6-0	219
61	Garrison '55	LT	21	6-2	219
63	Withers '53	RE	20	6-2	181
64	Player '55	LT	20	6-0	209
66	Kempson '53	LE	20	6-2	178
67	Rowe '54	BB	20	5-11	205
68	Kane '55	RG	19	5-11	187
70	Wells '54	TB	20	6-0	175
71	Helton '56	TB	18	6-0	200
73	Bryant '53	C	21	6-0	187
74	Jolley '54	C	21	6-3	184
75	McLellan '55	C	19	5-11	205
76	Gaskin '53	RE	21	6-4	197
77	Hair '53	TB	22	5-10	173
78	Jackson '53	LE	19	6-1	189
79	Bracken '55	LE	20	6-0	179
80	Arnold '53	RT	23	5-10	192
81	Knobel '53	WB	23	5-11	175
82	Radcliff '53	FB	19	5-10	180
86	LaMontagne '54	LG	19	6-0	205
87	Gentry '53	LE	21	6-1	174
88	Shirley '53	FB	20	6-3	211



*We're Pulling For...*

KENTUCKY'S  
**WILDCATS**

*To Make 1952  
A Great Season*



# 1952 KENTUCKY VARSITY ROSTER

No.	Name	Class	Pos.	Age	Ht.	Wt.	Ltrs.	Hometown	High School	Coach
1A	Harry Jones, Sr.,	HB		21	5'10"	158	2	Louisville, Ky.	Manual	Mike Basrak
1B	Larry Jones, Sr.,	QB		21	5'10"	158	2	Louisville, Ky.	Manual	Mike Basrak
12	Harold Gruner, Jr.,	QB		22	5'9"	172	1	Louisville, Ky.	Manual	Mike Basrak
14	Bradley Mills, Fr.,	E		17	6'1"	174	0	Lynch, Ky.	Lynch	Sam Potter
15	Harry Esterley, Soph.,	HB		19	6'0"	175	0	Cumbola, Pa.	Blythe Twp.	Frank Rompalo
16	Herb Hunt, Jr.,	QB		21	6'1"	161	1	Mayfield, Ky.	Mayfield	Red Herndon
17	Dick Shatto, Fr.,	QB		18	6'2"	187	0	Springfield, Ohio	Springfield Sr.	Jim MacDonald
18	Earl Carter, Soph.,	HB		19	5'10"	170	0	Louisville, Ky.	St. Xavier	Ray Baer
19	Hayden Hooper, Soph.,	HB		19	5'9"	165	0	Rockmart, Ga.	Rockmart	J. D. Langley
20	Dick Rushing, Soph.,	HB		19	6'0"	178	0	Camden, Ark.	Camden	Sam Coleman
21	Tom Fillion, Jr.,	HB		22	5'11"	176	1	Owensboro, Ky.	Owensboro	J. H. Johnson
22	Dick Moloney, Fr.,	HB		17	5'11"	165	0	Covington, Ky.	Dixie Heights	Rice Mountjoy
25	Don Jirschele, Soph.,	HB		19	6'1"	194	1	Clintonville, Wis.	Clintonville	T. D. Ellis
26	Dick Mitchell, Soph.,	HB		20	5'7"	152	0	Somerset, Ky.	Somerset	William Clark
27	Jack Hanley, Soph.,	LB		20	5'10"	170	0	Hartford, Conn.	Hartford	Loika, Newell
28	Miles Willard, Jr.,	Saf.		21	5'11"	150	1	Vandergriff, Pa.	Vandergriff	John Karrs
29	Joe Platt, Jr.,	HB		21	5'10"	175	0	Kokomo, Ind.	Kokomo	Troubaugh
30	Clark Ratcliffe, Soph.,	G.		20	5'9"	180	0	Pikeville, Ky.	Pikeville	Clayton Powers
31	Tommy Adkins, Jr.,	LB		20	6'0"	189	1	Corbin, Ky.	Corbin	Ossie Burch
33	Louis Karibo, Soph.,	HB		19	5'6"	145	0	Louisville, Ky.	Flaget	Paulie Miller
34	Allen Felch, Soph.,	FB		20	5'10"	195	1	Marinette, Wis.	Marinette	Sthean
35	Ralph Paolone, Jr.,	FB		21	6'0"	204	0	New Castle, Pa.	New Castle	P. H. Bridenbaugh
36	O. E. Philpot, Fr.,	LB		18	6'0"	180	0	Lebanon, Tenn.	Lebanon	J. E. Atkinson
37	Millard Shirley, Soph.,	FB		19	5'10"	180	0	Springfield, Ky.	Springfield	Clarence Caple
38	Tony Chicchino, Soph.,	FB		20	6'0"	175	0	Bridgeport, Pa.	Bridgeport	Ted Kershner
50	Charlie Bell, Fr.,	HB		18	5'8"	160	0	Pineville, Ky.	Pineville	Loyd Patterson
51	Leo Strange, Fr.,	C		18	6'0"	200	0	Louisville, Ky.	Manual	Mike Basrak
52	Bill Simpkins, Soph.,	C		19	6'0"	180	0	Griffin, Ga.	Spalding	Kimsey Stewart
54	Bob Bassitt, Fr.,	E		18	6'3"	190	0	Lima, Ohio	Central	Pope
55	John Griggs, Soph.,	C		21	6'2"	200	2	Morganfield, Ky.	Morganfield	Casey Organ
60	John Bailey, Soph.,	G		20	5'8"	190	0	Dorchester, N. J.	Millville	Barbases
61	Don Dyer, Jr.,	G		22	6'1"	192	0	Morristown, Tenn.	Morristown	W. G. Siler
62	Delmas Curnutte, Fr.,	G		17	5'9"	185	0	Ashland, Ky.	Ashland	Eblen, Claiborne
63	Jim Schenk, Jr.,	G		21	6'1"	212	0	Newark, N. J.	Seton Hall Prep	Joe Kasberger
65	Ray Correll, Jr.,	G		21	6'1"	205	1	Somerset, Ky.	Somerset	William Clark
66	Joe Koch, Soph.,	G		20	5'10"	180	0	Louisville, Ky.	St. Xavier	Ray Baer
67	Neil Lowry, Soph.,	G		20	6'0"	190	0	Youngstown, Ohio	Ursuline	Tom Carey
70	Jim Burrus, Soph.,	T		19	6'1"	212	0	Lebanon, Ohio	Lebanon	Lowell Storm
71	Bob Fry, Sr.,	T		21	6'4"	211	2	Cincinnati, Ohio	Elder	Bartett
72	John Baldwin, Sr.,	T		22	6'1"	197	2	Madisonville, Ky.	Madisonville	Bill Welborn
73	Tom Harper, Jr.,	T		22	6'2"	215	0	Madisonville, Ky.	Madisonville	Bill Welborn
74	Jerry Mingis, Fr.,	T		19	6'0"	205	0	Portsmouth, Va.	Woodrow Wilson	Thomas Gray
75	Frank Fuller, Sr.,	T		23	6'4"	212	2	DuBois, Pa.	DuBois	Hochrion
76	Calvin Smith, Jr.,	T		22	6'1"	227	1	Barbourville, Ky.	Barbourville	H. O. Tye
77	Dick Oldendick, Fr.,	T		18	6'1"	200	0	Highland Heights, Ky.	Campbell Co.	Donald Cline
78	Tom Black, Soph.,	T		20	6'3"	210	0	Texarkana, Ark.	Texarkana	J. L. Pense
80	Steve Meilinger, Jr.,	E		20	6'2"	212	1	Bethlehem, Pa.	Bethlehem	John Butler
81	Jerry Beatty, Fr.,	E		18	6'0"	170	0	Paintsville, Ky.	Paintsville	Oran Teater
82	Larry Hennessey, Soph.,	E		21	5'9"	165	1	Paris, Ky.	Paris	Dan Barr
83	Harry Kirk, Soph.,	E		19	6'4"	200	1	Mt. Sterling, Ky.	Mt. Sterling	Tiny Jones
84	Howard Schnellenger, Fr.,	E		17	6'1"	195	0	Louisville, Ky.	Flaget	Paul Miller
85	Jack Kasson, Soph.,	E		19	6'0"	180	0	Clintonville, Wis.	Clintonville	T. D. Ellis
86	Bill Wheeler, Fr.,	E		17	6'4"	200	0	Pikeville, Ky.	Pikeville	Clayton Powers
87	Jim Proffitt, Jr.,	E		20	6'2"	200	1	Louisville, Ky.	Manual	Mike Basrak
88	Clyde Carlig, Soph.,	E		18	6'1"	178	0	Chicago, Ill.	Fenger	Palmer
89	Al Zampino, Soph.,	E		19	6'1"	189	1	Philadelphia, Pa.	Bok Tech	Joe Alford



## Rent A New Car Drive It Yourself

New Beautifully Conditioned properly insured Cars as Private as your own.

Call or Come In

Learn About Low Rates

DIAL 2-7670

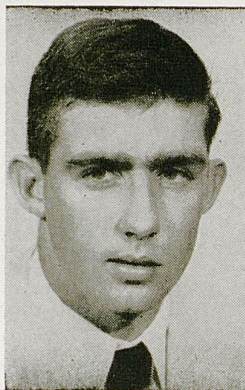
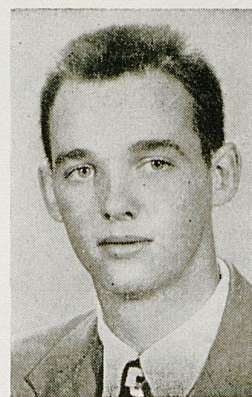
**Chrysler  
U-Drive-It  
Inc.**

148-154  
E. Short

Lexington  
Kentucky

HERB HUNT

Junior — Quarterback  
Mayfield, Ky.



EARL CARTER

Sophomore — Halfback  
Louisville, Ky.

## CHEVY CHASE PHARMACY

848 E. HIGH ST.

Enjoy our delicious hot dogs, hamburgers, grilled sandwiches, home-made chili, beef stew!

We also carry many items for your Sunday night snack — milk, bread, cheese, crackers, sardines!

W. E. MCGURK

P. L. CLARK

In Lexington It's

**Stables Motel**

One Mile North On U.S. 27, 68

SCORES OVER STOLL FIELD PUBLIC - ADDRESS SYSTEM COME TO  
YOU THROUGH THE COURTESY OF THE LEXINGTON NEWSPAPERS



# Kentucky Sporting Goods

"LEXINGTON'S EXCLUSIVE SPORTING GOODS STORE"

Spalding

MacGregor

Converse

Riddell

U. S. Rubber

Team Outfitters-Lettering

Motor Repair

Racket Restringing

Gun Repair

Johnson  
&  
Johnson

Coane

Evinrude

Peter Borough  
Boats

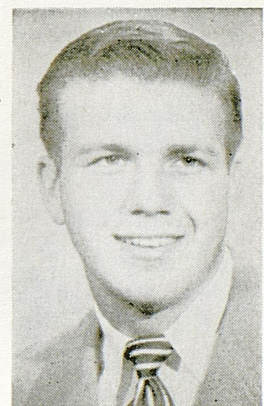
112 N. Upper St.

DIAL 2-5825

Lexington, Ky.



JERRY MINGIS  
Freshman — Tackle  
Portsmouth, Va.



TOM HARPER  
Junior — Tackle  
Madisonville, Ky.

THE SOUTH'S FINEST COLLEGE

TAILORS

MEN'S FINE APPAREL •  
*Bomanzi*  
ON THE ESPLANADE

HABERDASHERS

FOR COMPLETE REPORTS ON THIS GAME AND OTHERS BEING PLAYED  
TODAY, READ THE SPORTS SECTION OF SUNDAY HERALD-LEADER



# Taylor Tire Company

Incorporated

Tires, Batteries, Brakes, Clutch  
Starter, Lights, Ignition, Wheel Alignment  
Sales & Service



Vine at Southeastern

Phone 2-7127

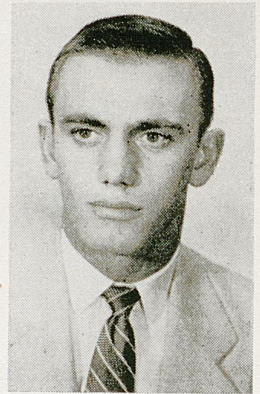
Lexington, Ky.



JIM BURRUS  
Sophomore — Tackle  
Lebanon, Ohio



CLYDE CARLIG  
Sophomore — End  
Chicago, Ill.



HARRY KIRK  
Sophomore — End  
Mt. Sterling, Ky.



"Nobody Can  
Launder A Shirt  
Like Becker's"

5 LOCATIONS

401 N. B'dway

109 Clay Ave.

**BECKER**  
*laundrers & cleaners*

395 South Lime

858 E. High

212 S. Lime

SCORES OVER STOLL FIELD PUBLIC - ADDRESS SYSTEM COME TO  
YOU THROUGH THE COURTESY OF THE LEXINGTON NEWSPAPERS



*Bayham's*

*Shoes of distinction*

## Quality Shoes

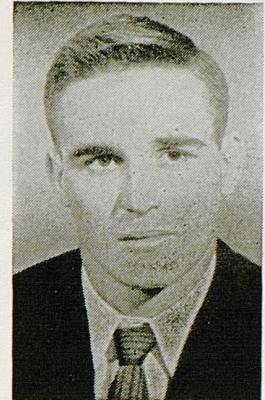
### FOR WOMEN —

Delman  
Palizzio  
Florsheim  
Delmanette  
Red Cross  
Capezio  
Penaljo  
Sandler

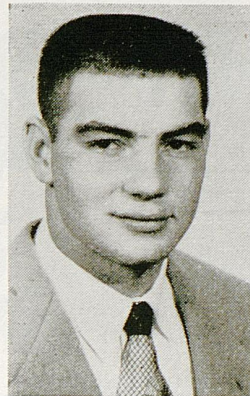
### FOR MEN —

French-Shriner  
Florsheim  
Freeman  
Bass

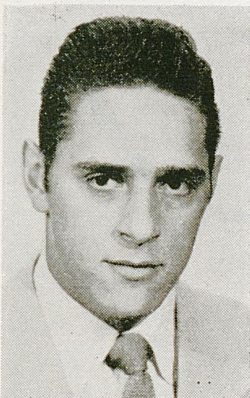
133-35 East Main



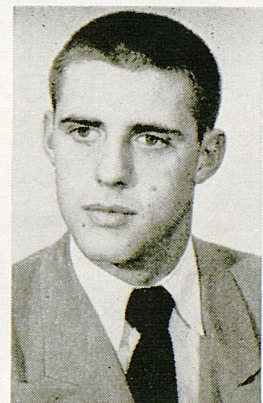
DICK MITCHELL  
Sophomore — Halfback  
Somerset, Ky.



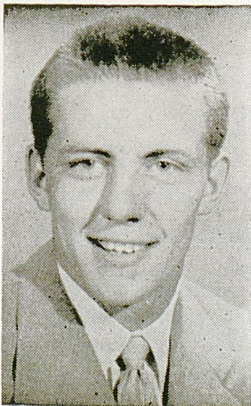
JERRY BEATTY  
Freshman — End  
Paintsville, Ky.



TONY CHICCINO  
Sophomore — Fullback  
Bridgeport, Pa.



JACK KASSON  
Sophomore — End  
Clintonville, Wis.



MILES WILLARD  
Junior — Safetyman  
Vandergrift, Pa.



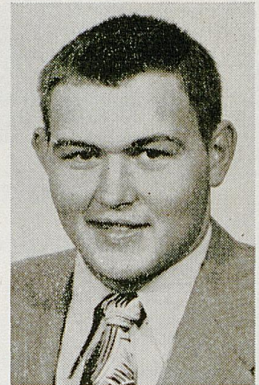
JOE KOCH  
Sophomore — Guard  
Louisville, Ky.

FOR COMPLETE REPORTS ON THIS GAME AND OTHERS BEING PLAYED TODAY, READ THE SPORTS SECTION OF SUNDAY HERALD-LEADER





DICK RUSHING  
Sophomore — Halfback  
Camden, Ark.



LEO STRANGE  
Freshman — Center  
Louisville, Ky.



WHEN YOU CAN'T GO TO THE  
GAME—TUNE IN **WHAS** FOR THE  
PLAY-BY-PLAY BROADCAST



Sponsored by



SCORES OVER STOLL FIELD PUBLIC - ADDRESS SYSTEM COME TO  
YOU THROUGH THE COURTESY OF THE LEXINGTON NEWSPAPERS



*Listen*

TO

**WHAS**

RADIO

*Look*

AT

**WHAS-TV**

*for*

**COMPLETE SPORTS COVERAGE**

by

the

**WHAS**

**SPORTS TEAM**



**Jimmy Finegan**  
Sports Director



**Phil Sutterfield**  
Sportscaster

**WHAS-TV**

**SPORTRAITS—6:00 p.m. (Monday through Friday)**

**UNIVERSITY OF KENTUCKY FOOTBALL FILMS**

sponsored by Bond Clothes, 5:00 p.m. (Sunday).

All U. of K. Games will be shown the Sunday following the game with commentary by Coach Paul Bryant and Phil Sutterfield.

**WHAS**

**SPORTS DOUBLEHEADER—5:15 p.m. (Monday through Friday)**

**KENTUCKIANA SPORTS—10:15 p.m. (Monday through Saturday)**

U. of K. Football Games . . . all the games at game time sponsored by Standard Oil Co., Inc. in Kentucky.

And

on both radio and television,

tune in

**THE SATURDAY SCOREBOARD**

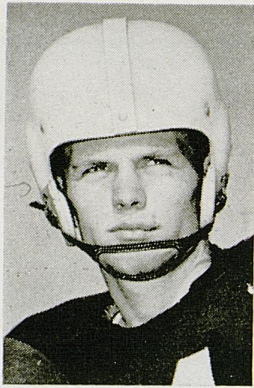


840 On Your Dial

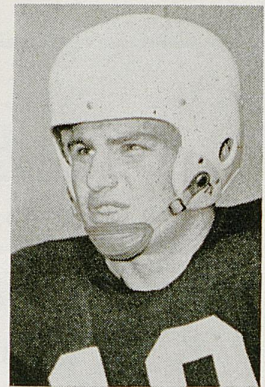


Channel 9





DICK SHATTO  
Freshman—Quarterback  
Springfield, Ohio



H. SCHNELLENBERGER  
Freshman — End  
Louisville, Ky.



All-Americans Babe Parilli and Doug Moseley  
prefer HUGHES ICE CREAM.

For the BEST in ICE CREAM

Come To

**HUGHES & CO.**

Corner High and Woodland

OR GO TO ANY OF THE MANY  
HUGHES ICE CREAM DEALERS.

PORTRAITS — CANDID WEDDINGS — BABIES

For the BEST in PICTURES, Come To

**MACK HUGHES STUDIO**

503 E. High — Phone 2-6470

We come to your home at same Reasonable Rates  
as we charge at the studio.

COMMERCIAL — AERIAL — COPIES — MOVIES



SCORES OVER STOLL FIELD PUBLIC - ADDRESS SYSTEM COME TO  
YOU THROUGH THE COURTESY OF THE LEXINGTON NEWSPAPERS



# — TIGERS —



OTIS KEMPSON—E



RED WHITTEN—FB



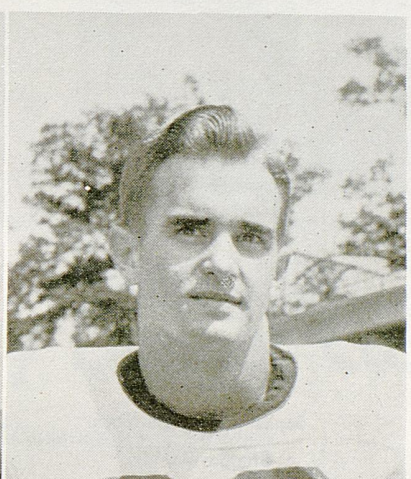
GEORGE WITHERS—E



ARCHIE BAKER—E



GARY BYRD—T



PETE COOK—Safety



CLYDE WHITE—T



JIMMY QUARLES—LB



BUCK GEORGE—WB



# ACME Plaster And Supply Co.

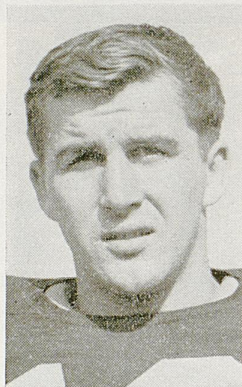
Building Materials

755 East Third

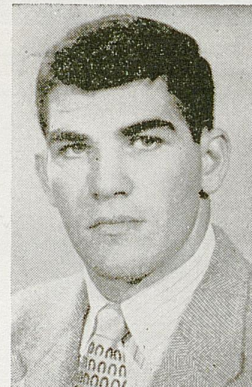
Phone 4-6805



DON JIRSCHLE  
Sophomore — Halfback  
Clintonville, Wis.



BOB BASSITT  
Freshman—E  
Lima, Ohio



JOHN BALDWIN  
Senior — Tackle  
Madisonville, Ky.

*Standard* furniture company

Phone 2-2180

221-223 East Main

Lexington 31, Kentucky

THE STORE WHERE QUALITY LEADS

PRICES TO FIT EVERY BUDGET

SCORES OVER STOLL FIELD PUBLIC - ADDRESS SYSTEM COME TO  
YOU THROUGH THE COURTESY OF THE LEXINGTON NEWSPAPERS

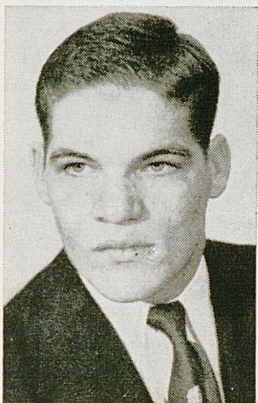




**TOM BLACK**  
Sophomore — Tackle  
Texarkana, Ark.



**LOUIS KARIBO**  
Sophomore — Halfback  
Louisville, Ky.



**HAYDEN HOOPER**  
Sophomore — Halfback  
Rockmart, Ga.



**CLARK RATCLIFFE**  
Sophomore — Guard  
Pikeville, Ky.



**O. E. PHILPOT**  
Freshman — Center  
Lebanon, Tenn.

# Perry Lumber Co.

*"Contractors & Builders"*

- |                     |                  |
|---------------------|------------------|
| ● Lumber            | ● Hardware       |
| ● Builders Supplies | ● Paint          |
| ● Roofing           | ● Sporting Goods |
| ● Mill Work         | ● Appliances     |

246 Walton Ave.

Lexington, Ky.

FOR COMPLETE REPORTS ON THIS GAME AND OTHERS BEING PLAYED TODAY, READ THE SPORTS SECTION OF SUNDAY HERALD-LEADER





FRONT ROW (left to right) Joe Platt, John Baldwin, Tom Fillion, Capt. John Griggs, Alt. Capt. Bob Fry, Earl Carter, Harold Gruner, Hayden Hooper, and Bill Simpkins. SECOND ROW — Jim Proffitt, Joe Koch, Jack Kasson, Clyde Carlig, Dick Oldendick, Harry Jones, Larry Hennessey, Larry Jones, and Clark Ratcliffe. THIRD Row — Dick Mitchell, Lou Karibo, Charlie Bell, Leo Strange, Bob Bassitt, Duke Curnutte, John Bailey, Herb Hunt, and Don Jirschele. FOURTH ROW — Harry Kirk, Jerry Beatty, Jack Hanley, Calvin Smith, Bill Wheeler, Dick Moloney, Miles Willard and Tom Harper. FIFTH ROW — Ralph Paolone, Tony Chiccino, Harry Esterley, Ray Correll, Jim Schenk, Jerry Mingis, Howard Schnellenberger, Neil Lowry, and Al Zampino. SIXTH ROW — O. E. Philpot, Allen Felch, Jim Burrus, Don Dyer, Millard Shirley, Steve Meilinger, Dick Rushing, and Tommy Adkins. Not pictured — Frank Fuller and Dick Shatto.

### TICKET INFORMATION

Next year be sure to purchase SEASON BOOKS for the UK football season. Season tickets guarantee you good location seats in the concrete stands for every home game. You get a better seat than you will be able to purchase on individual game basis and you will be eligible the following year to purchase your tickets under first priority.

**ALWAYS BUY TICKETS WELL IN ADVANCE!**

For further information, contact the UK Athletics Ticket Office in Memorial Coliseum. Telephone University Extension 2244 or 2245.

SCORES OVER STOLL FIELD PUBLIC - ADDRESS SYSTEM COME TO YOU THROUGH THE COURTESY OF THE LEXINGTON NEWSPAPERS



## LEXINGTON SALESMEN'S CLUB



Members of the Lexington Salesmen's Club shown above include (left to right): Front row — Charles Thompson, Russ Campbell, Bill Kleiser, Russell Grove, Ed Abraham, Charles Wise, C. M. Seeburger, Adolph Abraham, and F. R. Clardy. Second row — George Stanfill, J. T. Reynolds, Ed Lancaster, George Daniels, D. T. Baxter, Morton Petrie, William Curry, Gordon Tiedt, Barney Stall, and R. W. Crabtree. Back row — Ed Miller, Dick Reddick, E. P. Knight, Ralph Karsuer, Terry Grisson, Richard Skinner, T. Measels, Robert Bradley, Frank Merritt, Ben Patterson, Cy Worth, and Norman Burke. Several members of the club were absent when the photograph was taken.

## UNIVERSITY OF KENTUCKY OFFICE OF THE PRESIDENT

One step in the far-reaching master plan to bring national football recognition to the University of Kentucky is the necessity of increasing the patronage at gridiron events to such an extent that major teams of the country may be profitably brought to Lexington as the foes of the Wildcats.

Full achievement of this goal is being brought nearer to reality with the aid of the Lexington Salesmen's Club. This public-spirited organization of business men again this year undertook the task of promoting the sale of Kentucky's season football tickets throughout Eastern and Central Kentucky and was extremely successful in its efforts to fill the 36,000-seat stadium.

The Lexington Salesmen's Club deserves the sincere thanks of the University of Kentucky for their splendid co-operation in selling a major portion of the season tickets. It is only through the voluntary public service of such noteworthy civic organizations that citizens of this great state will be able to witness football of a type that will bring credit to the State and the University.

The University of Kentucky Athletics Association thanks the Lexington Salesmen's Club.

H. L. DONOVAN  
President



# Campus Book Store

*Everything for the Student*

## To Those Who Buy Photo-Engravings

- Newspapers
- Magazines
- Catalogs
- School Papers
- Advertising Campaigns
- Periodicals
- Programs

• Our plant is one of the largest and most modern in the Southeastern United States, offering every type of photo-engraving service. No order is too large or small for our immediate attention.

- ZINC AND COPPER
- COLOR PLATES
- NEWSPAPER MATS
- COMPLETE ART DEPT.
- ELECTROTYPING

*8 Hour Service on Mail Orders*



*Serving the South*

**THE KENTUCKY  
ENGRAVING CO.**

Inc.

428 West Short St.

Lexington, Ky.

DON DYER

Junior — Guard  
Morristown, Tenn.



AL ZAMPINO

Sophomore — End  
Philadelphia, Pa.



SCORES OVER STOLL FIELD PUBLIC - ADDRESS SYSTEM COME TO  
YOU THROUGH THE COURTESY OF THE LEXINGTON NEWSPAPERS



# Hargett Construction Co.

INCORPORATED

---

**General Contractors**

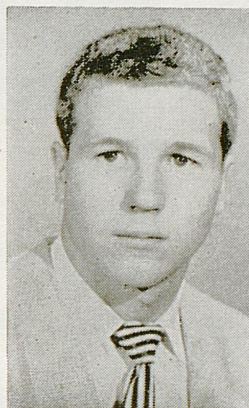
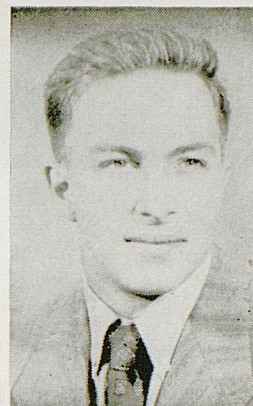
---

**Phone 2-2992**

**113 Walton Avenue**

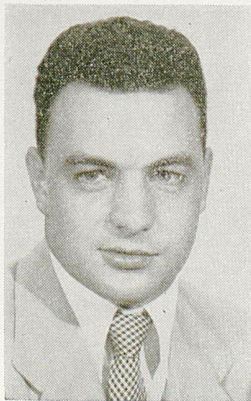
**Lexington, Ky.**

**JACK HANLEY**  
Sophomore — Halfback  
Hartford, Conn.



**JOE PLATT**  
Junior — Halfback  
Kokomo, Ind.

**HARRY ESTERLEY**  
Sophomore — Halfback  
Cumbola, Pa.



**MILLARD SHIRLEY**  
Sophomore — Fullback  
Springfield, Ky.

## The *Stirrup Cup* Restaurant

**E. Main at Ashland**

**Serving Hours**

**11:45 A.M. — 2 P.M.**

**5 P.M. — 8:30 P.M.**

**Good Food**

**Free Parking**

**FOR COMPLETE REPORTS ON THIS GAME AND OTHERS BEING PLAYED  
TODAY, READ THE SPORTS SECTION OF SUNDAY HERALD-LEADER**



# Good Luck and Good Wishes To The WILDCATS

**In Frankfort**  
**MAIN STREET**  
 (opposite Capitol Theatre)

**In Richmond**  
**205 WEST MAIN**

**In Lexington**  
**MAIN & LIME**

*Kessler Jewelers, located at Main and Limestone in Lexington, and with convenient downtown locations in Frankfort and Richmond, offers you the finest in jewelry, watches, pens, and guarantees every item of merchandise you purchase from any Kessler Jewelry Store. Personalized jewelry is a Kessler specialty, jewelry which matches your personality, and is designed with you in mind. Make all of your jewelry purchases the friendly, and economical Kessler way.*



FRANKFORT — LEXINGTON — RICHMOND

## 1952 FOOTBALL SCHEDULE

### KENTUCKY

versus

*VILLANOVA .....	Sept. 20
*OLE MISS .....	Sept. 27
TEXAS A&M .....	Oct. 4
*L.S.U. ....	Oct. 11
MISSISSIPPI STATE ..	Oct. 18
CINCINNATI .....	Oct. 25
MIAMI (Fla.) .....	Oct. 31
*TULANE .....	Nov. 8
*CLEMSON .....	Nov. 15
TENNESSEE .....	Nov. 22
FLORIDA .....	Dec. 6

\* Home Games





*\*AFTER THE GAME  
or any time*

COMING

All the Leading Bands  
of the Nation

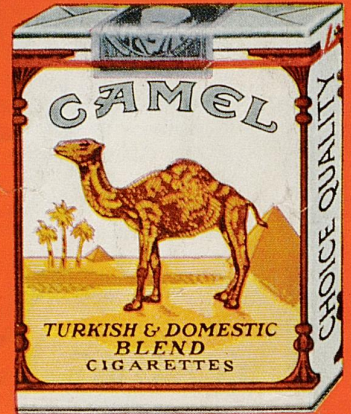
HOME  
OF  
KENTUCKY'S  
FINEST  
BANDS  
AND  
NAME  
BANDS  
OF  
THE  
NATION



*\*THE Showplace of the Bluegrass*



"I'd walk a mile for a  
**CAMEL**"



*So Mild—  
So Flavorful!*

