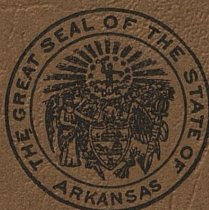


Fw 4.14:
Ar 4k/
no. 49



INVENTORY
of the
COUNTY ARCHIVES
of
ARKANSAS



GOVERNMENT PUBLICATION

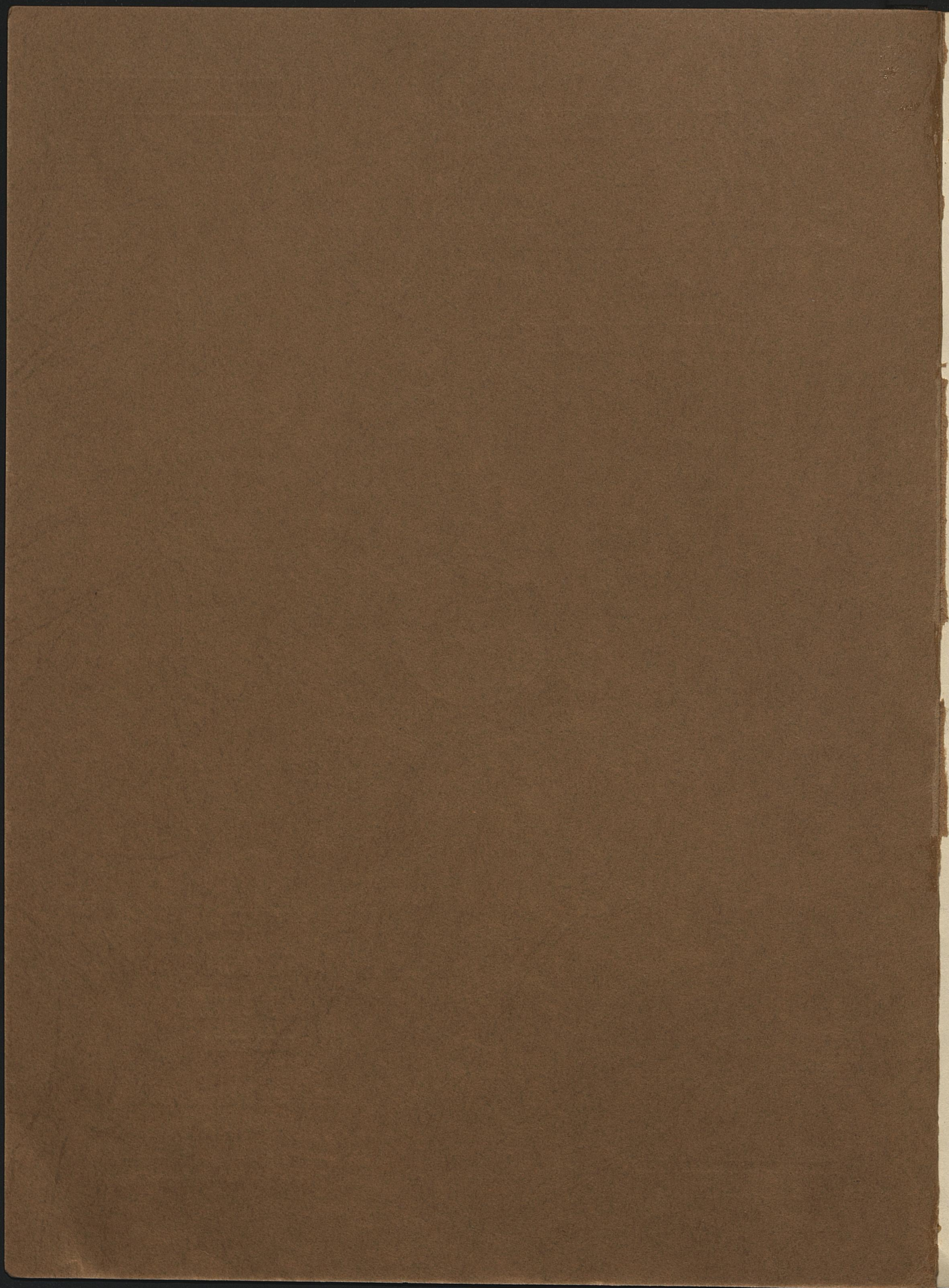
UNIVERSITY OF KENTUCKY
LIBRARIES

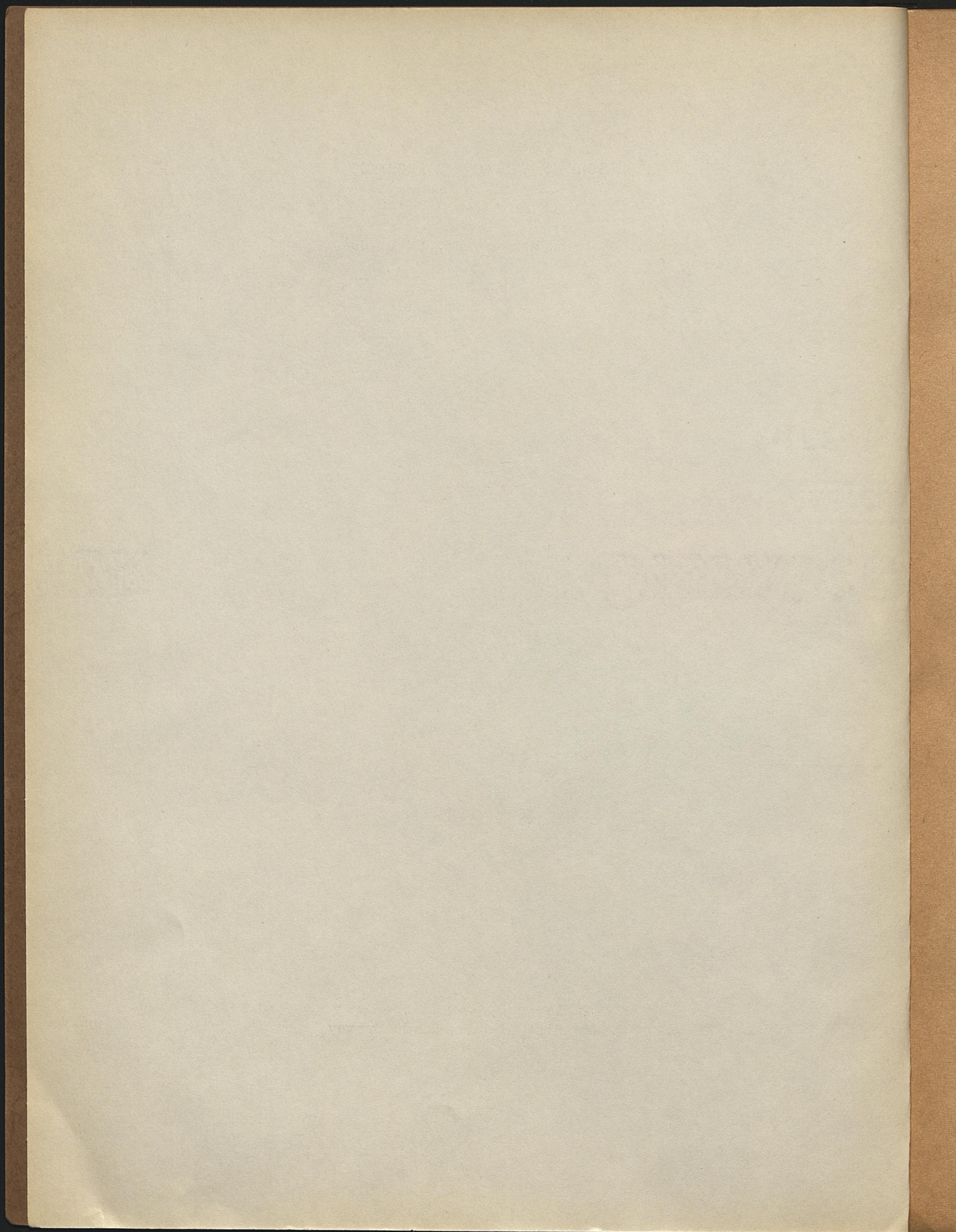
NUMBER 49
MONTGOMERY
COUNTY

(MT. IDA)

Prepared By
The Historical Records Survey

Division of
Community Service Programs
Work Projects Administration





INVENTORY OF THE COUNTY ARCHIVES
OF ARKANSAS

No. 49 Montgomery County (Mt. Ida)

Prepared by

The Arkansas Historical Records Survey
Division of Community Service Programs
Work Projects Administration

.....

Little Rock, Arkansas
The Arkansas Historical Records Survey
April 1942

HISTORICAL RECORDS SURVEY PROJECTS

Sargent B. Child, Director
Raymond Foster, State Supervisor

RESEARCH AND RECORDS PROGRAMS

Harvey E. Becknell, Director
John C. L. Andreassen, Regional Supervisor
Howard H. Jacoway, State Chief

DIVISION OF
COMMUNITY SERVICE PROGRAMS

Florence Kerr, Assistant Commissioner
Leo G. Spofford, Chief Regional Supervisor
May Bevens, State Director

WORK PROJECTS ADMINISTRATION

Howard O. Hunter, Commissioner
Chas. B. Braum, Regional Director
Floyd Sharp, State Administrator

SPONSOR

University of Arkansas
College of Arts and Sciences

CO-SPONSOR

Judge J. H. Shaw
County Judge of Montgomery County

" To bring together the records of the past and to house them in buildings where they will be preserved for the use of men living in the future, a nation must believe in three things. It must believe in the past. It must believe in the future. It must, above all, believe in the capacity of its people so to learn from the past that they can gain in judgment for the creation of the future."

FRANKLIN DELANO ROOSEVELT

It is not a matter of the past
and to be sure the things which they will
be prepared for the day of man living in the
future, a nation must believe in these things.
It must believe in the past. It must believe
in the future. It must believe in all things
the capacity of the people to do better than the
past that they are able to do better than the
present and the future.

THESE ARE THE THINGS WHICH

FOREWORD

The Inventory of the County Archives of Arkansas is one of a number of guides ~~to historical materials~~ prepared throughout the United States by workers on Historical Records Survey projects of the Work Projects Administration. The publication herewith presented, an inventory of the archives of Montgomery County, is number 49 of the Arkansas series.

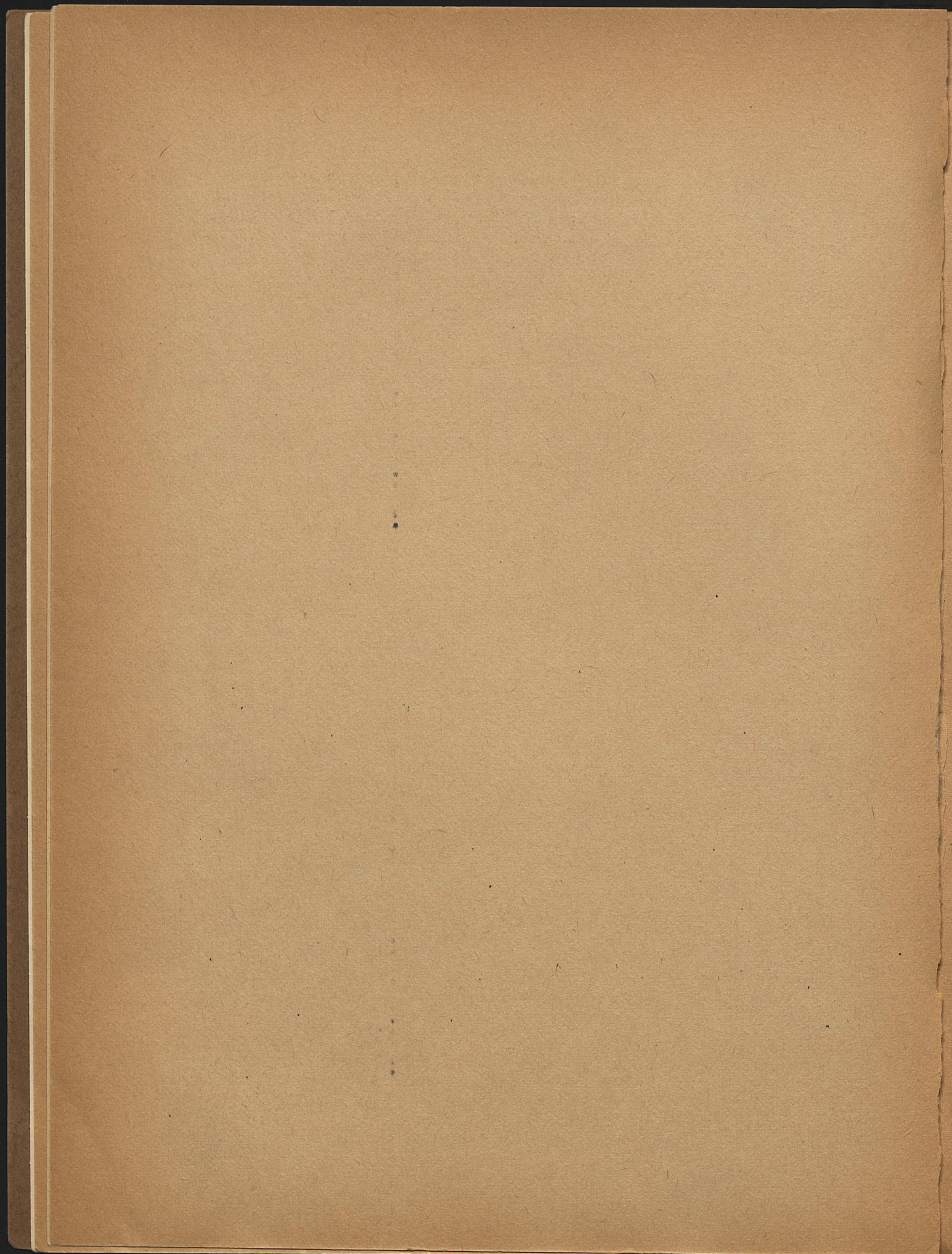
The Historical Records Survey program was undertaken in the winter of 1935-36 for the purpose of providing useful employment for the needy unemployed historians, lawyers, teachers, and research and clerical workers. In carrying out this objective, the project was organized to compile inventories of historical materials, particularly the unpublished government documents and records which are basic in the administration of local government, and which provide invaluable data for students of political, economic, and social history. The archival guide herewith presented is intended to meet the requirements of day-to-day administration by the officials of the county, and also the needs of lawyers, businessmen, and other citizens who require facts from the public records for the proper conduct of their affairs. The volume is so designed that it can be used by the historian in his research in unprinted sources in the same way he uses the library card catalog for printed sources.

The inventories produced by the Historical Records Survey projects attempt to do more than give merely a list of records--they attempt further to sketch in the historical background of the county or other unit of government, and to describe precisely and in detail the organization and functions of the government agencies whose records they list. The county, town, and other local inventories for the entire country will, when completed, constitute an encyclopedia of local government as well as a bibliography of local archives. Up to the present time more than 1,800 Survey publications have been issued in the country as a whole.

The successful conclusion of the work of the Historical Records Survey projects, even in a single county, would not be possible without the support of public officials, historical and legal specialists, and many other groups in the community. Their cooperation is gratefully acknowledged.

The Survey Program was organized by Luther H. Evans, who served as Director until March 1, 1940, when he was succeeded by Sargent B. Child. The Survey operates as a Nation-wide series of locally sponsored projects in the Division of Community Service Programs, of which Mrs. Florence Kerr, Assistant Commissioner, is in charge.

HOWARD O. HUNTER
Commissioner of
Work Projects



PREFACE

The Historical Records Survey was initiated in Arkansas in March 1936 as a branch of the Federal Writers' Project. In November of the same year the Survey became an independent unit of Federal Project No. 1, and functioned under Federal sponsorship until September 1, 1939. On September 5, 1939, the unit became a State-wide locally sponsored project under the supervision of Howard H. Jacoway. Mr. Jacoway resigned on September 5, 1940 to become State Chief of the Research and Records Programs and was succeeded by Raymond Foster who has served on the supervisory staff of the Survey since December 1938.

The Survey is sponsored in Arkansas by the College of Arts and Sciences of the University of Arkansas and co-sponsored by the county judges of the State. It operates under the jurisdiction of Research and Records Programs of the Division of Community Service Programs of the Work Projects Administration. The Arkansas unit is under the technical and editorial supervision of the Central office in Washington, D.C.

The Arkansas Survey has had as its chief objective the publication of county inventories, but at present is also making a survey of State, municipal, and church archives, early American imprints, manuscript depositories and collections, and is preparing a guide to Arkansas newspapers. A list of former publications will be found on the last page of this volume.

The Survey is preparing a volume which will include detailed discussions of the organization, structure, and evolution of county government in Arkansas. The material for this volume will be assembled from the State's constitution, codes, and acts of the General Assembly. The material will consist of all those laws and constitutional provisions that are governing and have governed county offices. It is believed that the publication of this volume will make it unnecessary to repeat certain items of general information in forthcoming county inventories. Pending issuance of the general volume on county government, it is suggested that the reader consult the Inventory of the County Archives of Arkansas, No. 23. Faulkner County (Conway) for more detailed discussions than those found in this inventory.

A consultation of the table of contents of this volume will indicate that the inventory is divided into two parts. In the first, or general section of the volume will be found a historical sketch of the county, and an essay on the housing, care, and accessibility of the records. In the second section of the volume will be found a listing of the records of county offices. The arrangement of offices by functions is as follows: General administration; recording; administration of justice; finance; elections; education; health and welfare, and miscellaneous. The records are segregated under subject headings, according to office of origin or final deposit, unless other classification is directed by law. Under agencies, records have been classified, so far as possible, according to the subjects with which they deal. They are described in entries whose style is formalized to give the follow-

Preface

ing information: Title of record, dates for which available, quantity, labeling of volumes or containers, variant titles, description of record contents, manner of arrangement, indexing, nature of recording, size of volumes or containers, and location.

The inventory of the Montgomery County Archives was begun during the latter part of 1938 and completed in 1941. The original field workers were: Hubert C. Watson and Elaine Williams who worked under the supervision of Joe Watkins, District Supervisor.

The work in the State office included the editing of forms, writing of entries, historical and legal research, writing and editing of essays and publication of the volume. Persons in the State editorial office to whom credit is due are: Albert A. Condray, forms editor; Mary H. Winburne and Jennie Birkhead, entry editors; Irene Thibault, writer who prepared the material for publication; Frances Kennedy, who directed the mimeographing and publication; Mabelle Neighbors, Avis Crawford and Flossie Blassingame, complete the unit responsible in the final publication of this volume. Carl E. Ott prepared and directed the indexing.

The editorial criticisms of Mabel S. Brodie, editor in charge of public records inventories in the central office, and Guy P. Timboe, assistant editor, has been invaluable to the Arkansas staff in preparing this volume for publication. The administrative personnel of Work Projects Administration, of the Division of Community Service Programs, and of Research and Records Programs have cooperated with the Survey in all phases of its program. The helpful suggestions and friendly counsel of John C. L. Andreassen, Regional Supervisor of Historical Records Survey, is gratefully acknowledged.

The Survey's official sponsor, its State-wide Advisory Board, and the Community Advisory Board of Montgomery County each contributed valuable assistance to the project in the compilation and publication of this volume. Other contributing agencies were: The Arkansas History Commission; Arkansas Writers' Project, WPA; and the county officials of Montgomery County.

War Memorial Building
Little Rock, Arkansas
April 1942

RAYMOND FOSTER
State Supervisor
The Arkansas Historical
Records Survey

ABBREVIATIONS, SYMBOLS, AND EXPLANATORY NOTES

| | |
|----------|---------------------------------|
| A. Ark. | Acts of Arkansas |
| alph. | alphabetical(ly) |
| approx. | approximately |
| arr. | arranged |
| aver. | average |
| chron. | chronological(ly) |
| co. | county |
| deft. | defendant |
| dist. | district |
| est. | estimated |
| f. d. | file drawer(s) |
| h. | handwritten |
| hpf. | handwritten printed forms |
| hph. | handwritten printed head |
| ibid. | ibidem(in the same place) |
| ms. | manuscript |
| no(s). | number(s) |
| numer. | numerical(ly) |
| op. cit. | opere citato(in the work cited) |
| pltf. | plaintiff |
| p(p). | .. page(s) |
| r. | range |
| sec(s) | section(s) |
| t. | typed |
| tpf. | typed printed form |
| twp. | township |
| U. S. | United States |
| v. | vault |
| vol(s). | .. volume(s) |
| WPA. | Work Projects Administration |

Symbols

| | |
|----|------------------------|
| -- | to date and continuing |
| ' | foot, feet |
| " | inch(es) |
| x | by(dimensions) |

Explanatory Notes

Titles of Records

Exact titles of records are written in solid capitals without parentheses as in entry 3. In the absence of titles, descriptive titles have been assigned, which are written in solid capitals and enclosed in brackets as in entry 1. If a record title is not descriptive of the contents of the record, an assigned explanatory title (or explanatory words) written with initial capitals and enclosed in parentheses, has been added as in entry 21. The current or most recent title of a record is used as the entry title and title variation is indicated as in entry 27.

Abbreviations, Symbols, and
Explanatory Notes

Dates

All dates used are inclusive. Missing records are indicated by broken dates.

Quantity

When two or more types of containers are considered in a single entry, the quantity is shown in chronological order, in so far as possible.

Labeling

Figures or letters in parentheses, following the number of volumes, file boxes, or other type of container, indicate the labeling. If no labeling is indicated, it may be assumed that there is none.

Discontinuance

Where no statement is made that the record was discontinued at the last date shown in the entry, it could not be definitely established that such was the case. Where no comment is made on the absence of prior, subsequent or intermediate records, no definite information could be obtained.

Description of Records

The description of the contents of a record applies only to the current or most recent record unless change in contents is actually shown in a record entry.

Indexing

All indexes to records, unless otherwise stated, are self-contained.

Condition of Records

Records are in good condition unless otherwise indicated.

Dimensions

Dimensions are always given in inches, unless otherwise indicated, and, therefore, the symbol for inches ("") is omitted.

Location of Records

All records are in the county courthouse unless otherwise noted. When all or a majority of the records of an office have a common location, the location is indicated at the beginning of the office entries.

Cross References

Title-line cross references are used to show the continuity of a record series which has been kept separately for a period of time

Abbreviations, Symbols, and Explanatory Notes

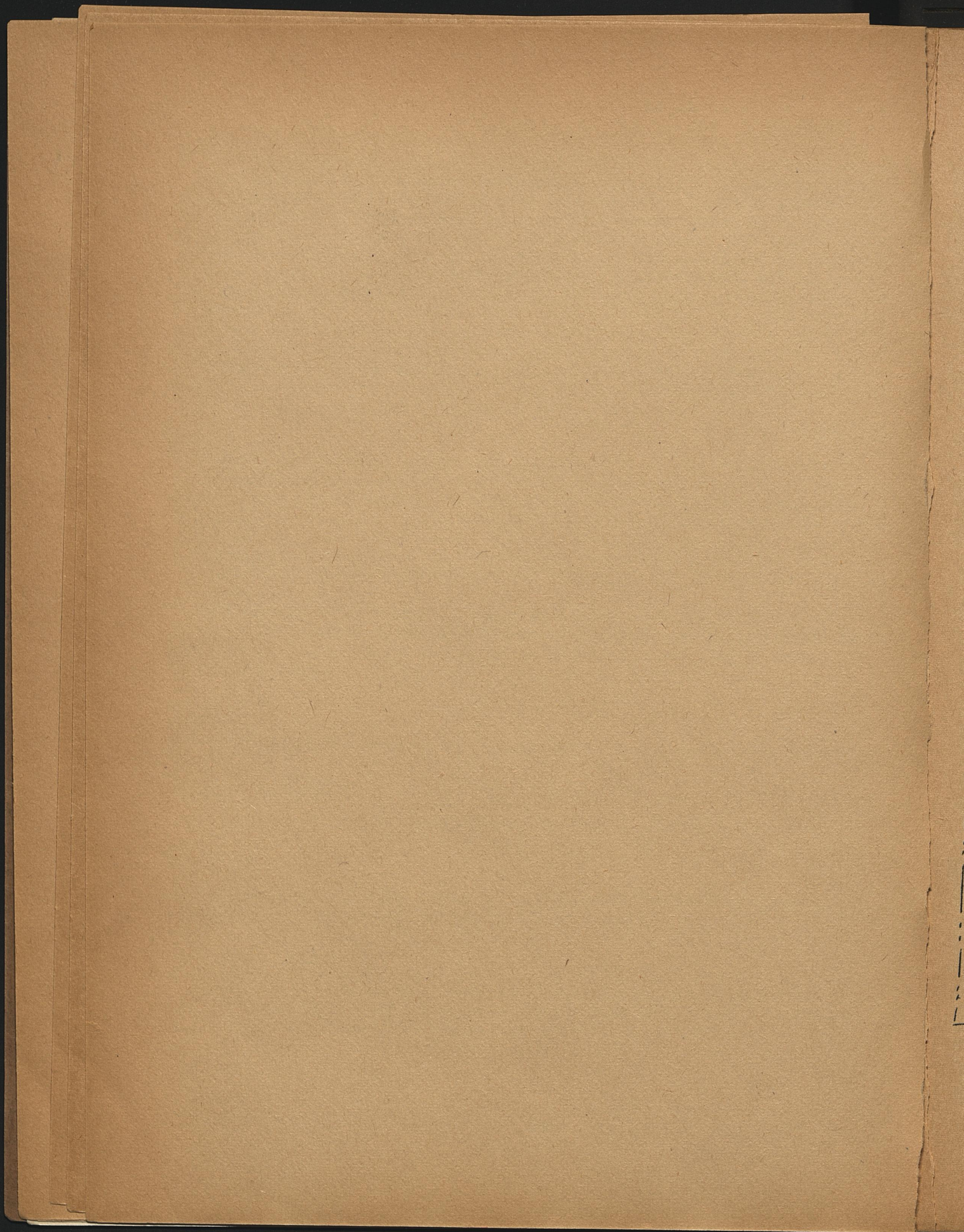
and with other records for different periods of time. An example of that is in entry 15: "1847-78, and incidental recordings, 1879-1919, in Deed Record, entry 6." They are also used in all artificial entries, those set up to cover records which must be shown separately under their proper office even though they are kept in files or records appearing elsewhere in the inventory, as, for example, the title-line reference in entry 19: "In Deed Record, entry 6." The description of the entry shows the title and entry number of the record from which the cross reference is made, as, for example, those words in entry 3: "Also contains: Town plats, 1855-72, entry 26." Dates shown in the description of the master entry or entry of miscellaneous contents are used only for the part of the record contained therein, and are shown only when they vary from those of the master entry.

Citations

A citation of an act of the Legislature of the Territory of Arkansas, or of the General Assembly of the State of Arkansas, or, an act of a legislative body of another Territory or State, refers to the page number of the official publication of the laws.

A citation of a decision of the Arkansas State Supreme Court gives the style of the case and the volume and page number of the publication.

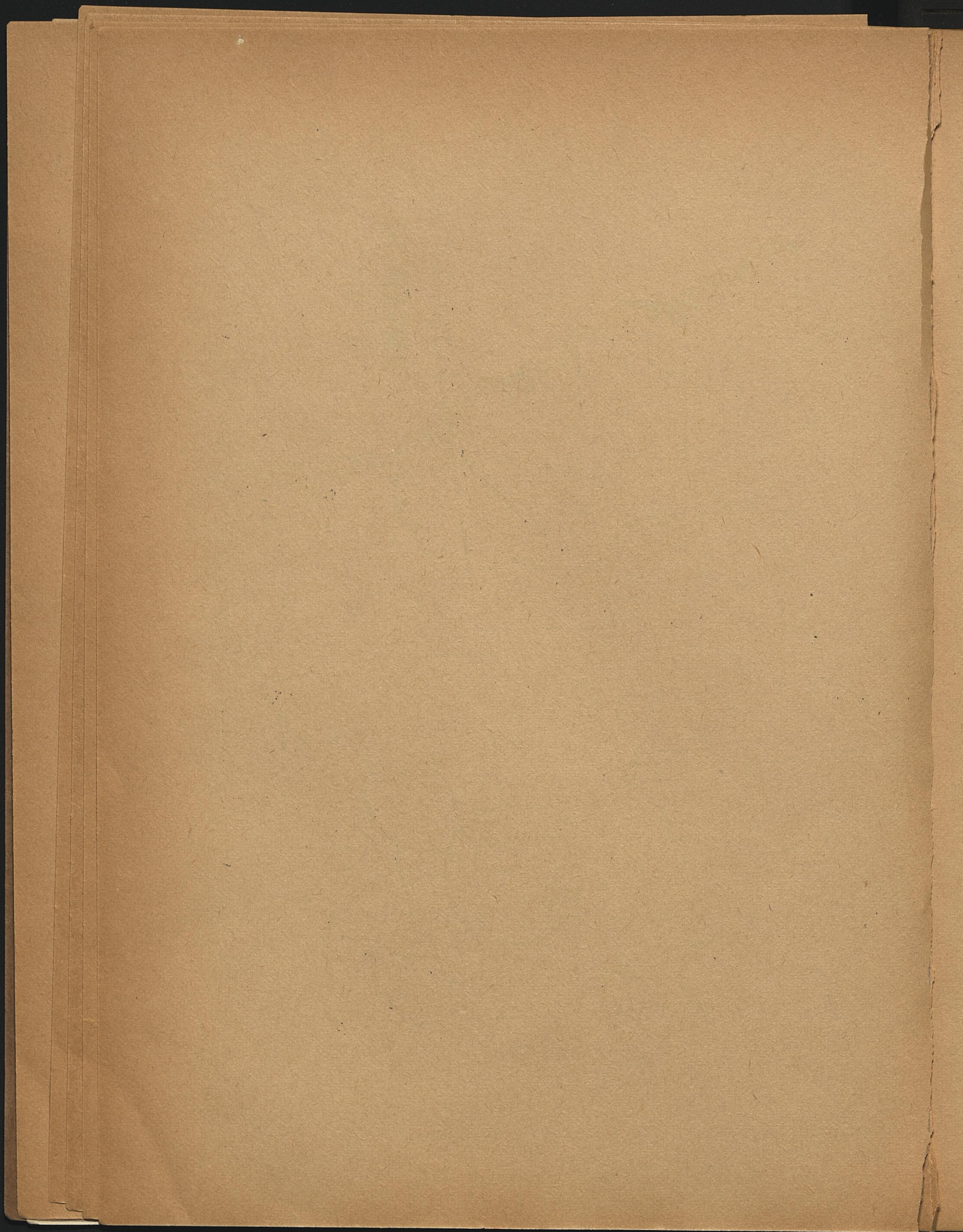
The title of any other published volume is always shown in full the first time used, in some cases in short-title form thereafter.

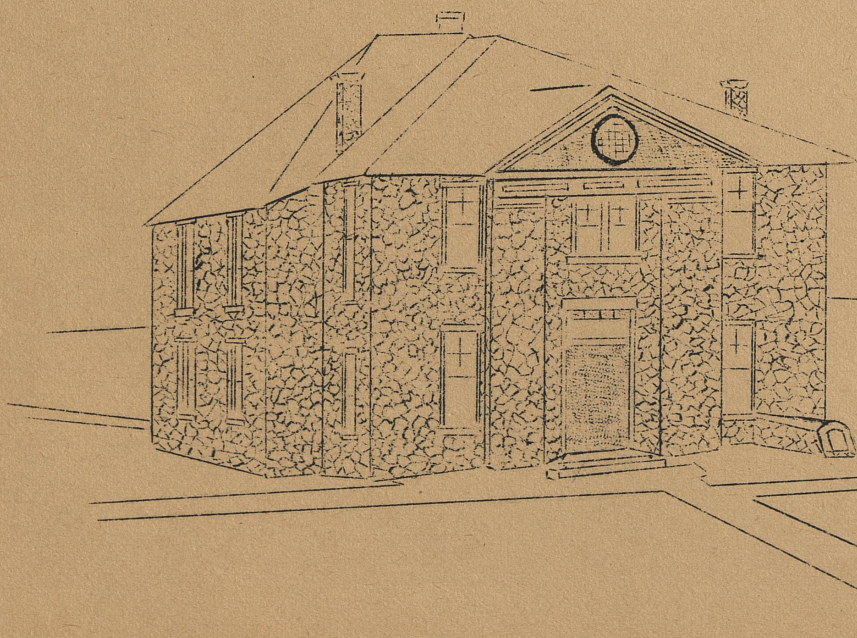




ARKANSAS

41 mi.





MONTGOMERY COUNTY COURTHOUSE 1923--

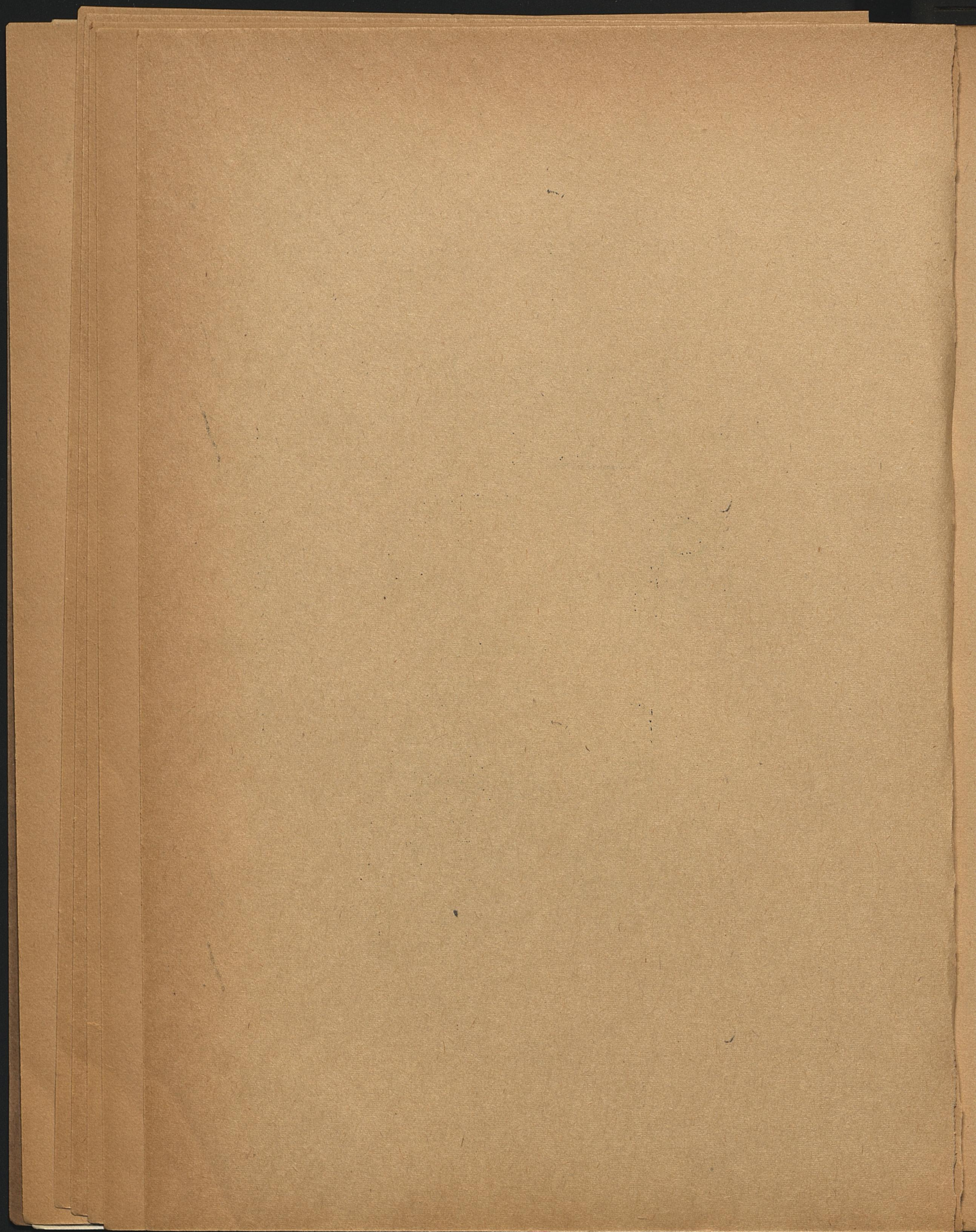


TABLE OF CONTENTS

| | |
|--|-----------|
| Foreword | Page v |
| Preface | vii |
| Abbreviations, Symbols, and Explanatory Notes | ix |
| General | |
| Historical Sketch | 1 |
| Housing, Care, and Accessibility of the Records | 17 |
| County Offices and Their Records | |
| County Court | 25 |
| Circuit Clerk as Recorder | 26 |
| Real property conveyances: Deeds, leases, mortgages, liens and lis pendens, surveys and plats. Personal property: Sales, mortgages. Bonds, commissions, and credentials. Miscellaneous. | |
| Circuit Court | 32 |
| Civil division: Case papers, proceedings, naturalization, judgments and executions, fees. Criminal division: Case papers, indictments, fees. | |
| Chancery Court | 34 |
| Probate Court | 36 |
| Case papers. Wills. Bonds and Letters. Accounts. Claims. settlements. Inventories, appraisements, and sales bills. Proceedings. | |
| Juvenile Court | 38 |
| Justice of the Peace | 38 |
| Sheriff | 39 |
| Quorum Court | 39 |
| County Clerk | 39 |
| Accounts, audits, warrants, settlements. Assessment and taxation: Assessment, collections, tax sales, redemptions. Vital statistic. Marriages. Corporations. Professional licenses. Livestock. Pistols. School lands. Appointments. | |
| Equalization Board | 45 |
| Treasurer | 45 |

Table of Contents (con't)

| | Page |
|--------------------------------|------|
| Bibliography | 47 |
| List of County Officials | 53 |
| Chronological Index | 59 |
| Subject Index | 61 |
| List of Publications .. | |

HISTORICAL SKETCH

Physical Features

Montgomery County, in the west-central part of Arkansas, has an area of 801 square miles. (1) When the county was created in 1842, it had an area of 1,260 square miles, (2) but subsequent boundary changes have reduced its area. It is bounded on the north by Scott and Yell Counties, on the east by Garland and Hot Spring, on the south by Clark and Pike, and on the west by Polk County. (3)

The topography varies in elevation from 563 feet near Caddo Gap to 2,400 feet on Fourche Mountain. (4) The annual average precipitation, as recorded at Mount Ida, the county seat, from 1872 through 1930, is 51.37 inches. (5) The average annual snowfall is 5.1 inches. (6) The average growing season is 201 days. (7)

The general face of the county is broken and divided by a chain of mountains into a hilly section, comprising more than half of the county and the remaining alluvial lowlands. Generally, the hill lands are splendidly adapted to fruit growing, especially berries and peaches, and the lowlands to almost any crop. The county is well watered by numerous streams running throughout the year. Water for domestic purposes is soft and generally comes from wells and springs. There are mineral springs, especially sulphur and iron, among which are Maddox, Hutchinson, Ryder, and Mayberry Springs. (8) The Ouachita River flows across the northern part of the county from west to east. South Fork flows east and empties into the Ouachita, and Fiddlers Creek flows south into it. (9)

The Caddo River, which is one of the chief tributaries of the Ouachita, (10) rises in Montgomery County and flows southwest. It is fed by Lick Creek and South Fork of the Caddo. (11)

Early History

De Soto and his followers are believed to have been the first white men to visit the present Montgomery County. The United States De Soto Expedition Commission, after studying old diaries kept by De Soto's men and reports of early historians, has the following to say about their visit to the county:

Assuming that Tanico (an Indian town) was near the present town of Hot Springs-- and there are no other sizable hot springs in this vicinity--a trail upstream but to the southwest would probably have led up the "Big Mazarn Creek" to the Caddo River just below "Caddo Gap". Here the Caddo breaks through a narrow opening in the novaculite stone ridge, and on the upstream side the valley widens out

Historical Sketch

(First entry p.24)

and there are many signs of an Indian village including several mounds. This probably was the site of Tula (another Indian town mentioned in the diaries). From what is said of their language and customs and the fact that even the Spaniards noted their resemblance in these particulars to the known Caddo tribes farther south, it is ~~certain~~ that they were a northern offshoot of the Caddo people; and this is borne out by the names Caddo Gap and Caddo River which cling to the region and the further fact that in 1687 Joutel found a Caddo tribe a little farther down Ouachita River which may very well have been a remnant of the Tula. The Spaniards finally subdued them but declared that they were the "best fighting people" they had met with. (12)

The town of Montgomery, now Mount Ida, gradually built up after Granville Whittington, who had come from Boston, Massachusetts, 2 years before and settled at Hot Springs, moved to a farm just north of the present Mount Ida and established a store on May 15, 1837. His account books carried the names of most of the early settlers of the county. This settlement was known as Montgomery. The Mount Ida post office was established on June 28, 1842, on the site of the Whittington home. The post office name was changed to Montgomery in 1848, but was renamed Mount Ida on January 13, 1849. Mr. Whittington was secretary of a meeting of citizens held in June 1835 at which a resolution was adopted asking that Arkansas be admitted to the Union as a State. (13)

Creation of County

Montgomery County was created December 9, 1842, from a part of Hot Spring County, but due to a provision of the creative act the county government was not erected until June 1, 1844. (14) The county is supposed to have been named for Gen. Richard Montgomery, an American Revolution hero who lost his life in the storming of Quebec, Canada. (15) The original townships were Caddo, Sulphur Spring, Mountain, and Marble. (16) The county now has 22 townships. (17) The town of Montgomery was the original seat of justice. The name of the town was changed to Salem in July 1850, but three months later, it was changed to Mount Ida. (18) The first county officials were: George Fisher, clerk; N. E. Robinson, sheriff; John M. Fleming, treasurer; and Alexander Langsford, coroner. They were elected November 6, 1844. On January 15, 1845, Andrew Bowles was named judge. (19) Efforts were made in 1912 and 1914 to have the county seat moved to Womble (now named Norman), but they were unsuccessful. (20)

Courthouses

The first courthouse, a log structure, was built on the square at Montgomery and remained there until 1873 when it was moved to another location and used as a school and church. (21) A new courthouse, costing \$5,350 was built in 1873, with Zora L. Cotton as contractor. The old courthouse and jail were sold and the funds were applied on the new structure. (22) In 1909 a native stone building with a vault was

Historical Sketch

(First entry p.24)

erected as a clerk's office to house county records, which were complete from creation of the county. (23) The present courthouse was built of native stone in 1923 at a cost of \$40,000. The jail was built from materials taken from the old county clerk's office. (24)

There have been many changes in the boundaries since the creation of Montgomery County. On January 5, 1845, an act of the General Assembly was approved which defined more exactly the line between Yell and Montgomery Counties. (25) On January 9 of the same year a part of Marble township was annexed by Saline County and the southeast township of Montgomery County was made a part of Hot Spring County. (26) The line between Perry and Montgomery Counties was more clearly defined by an act passed December 23, 1846. (27) The line between Hot Spring and Montgomery Counties was altered on December 27, 1848. (28) This followed the resotration of the old line between Perry and Montgomery on December 21, 1848. (29) On February 7, 1859, there was a change in the boundary between Polk and Montgomery Counties. (30) With the creation of Garland County on April 5, 1873, a portion of Montgomery County was detached. (31) Due to uncertainty as to the exact location of the Clark- Montgomery line, which caused much annoyance and trouble in the matter of serving as jurors, working the roads, and paying taxes, an act was passed on April 24, 1873, defining the line. (32) The line between Pike and Montgomery was defined in an act approved on December 16, 1874. (33) An act carrying the emergency clause was passed on February 23, 1917, in which a portion of Montgomery County was given to Garland. (34) The last change was on February 21, 1925, when the line between Montgomery and Scott was defined. (35)

Civil War Period

Perhaps the most outstanding temporary resident of Montgomery County was Albert Pike. The famous lawyer and author, seeking a place of peace and quiet where he could study and write, moved to the county in 1863. A. P. Vaught, son of one of the pioneers of the county, relates the following concerning Pike:

In 1863 Albert Pike came to Montgomery County and purchased our old homestead in Greasy Cove from my father, John Berry Vaught, paying \$500 from a trunk of gold which he carried with him. When they rode up to our house he was sitting in the buggy beside one of his slaves, with his long, flowing white beard reaching almost to the floor board. The trunk of gold was strapped on behind the buggy and three or four Negro slaves rode in front of him and three or four behind him. A few weeks after the purchase of the place my father moved on further down the creek.

Albert Pike lived on this place for two years, completing two books while there. One morning about 2 o'clock our family was aroused by a crowd which had ridden up on horseback. My father soon was informed they were bushwhackers and that they were going to Albert Pike's home to kill and rob him. My father insisted they stay for breakfast. In the

meantime my older brother, James Robert Vaught, was secretly mounted on a steed and en route by a short cut to warn Albert Pike. Albert Pike packed a few things, strapped the trunk of gold on the back of the buggy, leaving many important books and papers behind, and was soon on his way. The bushwhackers arrived about 30 minutes after the departure of Albert Pike. They were so enraged that many pictures were torn from the wall and smashed, books were piled on the floor and the place was burned. (36)

There has been some dispute as to the names of the books written by Mr. Pike while at Greasy Cove. All the valuable books, papers, and manuscripts were not destroyed by the bushwhackers. Many were thrown into the river, and a few were recovered. (37) After the Civil War, Pike returned to Little Rock for a time and later moved to Memphis, Tennessee. (38)

Montgomery County's representative in the Ordinance Convention, Alexander M. Clingman, voted for secession from the United States when the matter was brought before the convention on May 6, 1861. (39) Although the Civil War did not affect Montgomery County to a great extent, there were a few skirmishes and the county as a whole contributed to the cause of the Confederacy. At the April term of county court in 1863, \$1,500 was appropriated from the internal improvement fund to buy salt for the use of families of soldiers then in active service in the Confederate Army. (40)

On December 14, 1863, a company of the Second Kansas Cavalry surprised a small detachment of Confederate soldiers in the woods near Caddo Mill, killed two men, wounded one, and captured one prisoner, eight Negroes, three wagons, six mules, six horses and a quantity of arms. The rest of the detachment escaped. (41) This was after the Federal troops had occupied Mount Ida on December 4. The Second Kansas Cavalry sent scouting parties over most of the county, but seldom came in contact with the enemy. (42)

Economic Development

Industry and Commerce

Montgomery County has a vast store of undeveloped resources. The main manufacturing plants are sawmills. Industry has developed gradually through the years with an attendant increase in employment and use of natural resources. In 1860 there were 6 flour and gristmills in the county, valued at \$25,400. They used raw materials valued at \$104,000, employed 18 persons who received wages totaling \$3,840, and produced products valued at \$121,500. There were 4 sawmills valued at \$8,700 which used raw materials valued at \$6,500, employed 6 persons and paid wages totaling \$1,260. Lumber produced was valued at \$27,250. (43) By 1900 there were 26 manufacturing plants in the county valued at \$37,773. They employed 26 persons, paid wages totaling \$3,701, used

Historical Sketch

(First entry p. 24)

material costing \$22,499, and produced goods valued at \$38,026. (44)
In 1939 although the number of plants dropped to 4, there were 120 persons employed who were paid wages totaling \$80,840. Raw materials used cost \$301,028, and the manufactured products were valued at \$497,340. (45)

Minerals

Montgomery County has one of the widest varieties of minerals of any county in the State, but few are found in paying quantities. Among those known to exist are: Agaric mineral, alum, amethyst, anglesite, apatite, asbolite, axurite, barite, basanite, black jack, blue vitrol, cement, chert, cobalt, copper, dolomite, jeffersite, limestone, novaculite, or whetsone, silver ore, slate, soapstone, spahlerite, talc, tripoli, uranium, variscite, wad, waverlite, and zinc. (46)

Although silver was never produced in great quantities there was a boom about 1879 that caused much speculation and activity. A large corporation was formed by Eastern capital to develop a silver mine at Silver City in 1879. (47) At present the only mining in the county is for slate. In 1939, 734.58 short tons were mined, valued at \$6,372.48. (48) Sand and gravel production in recent years has varied from 101.5 cubic yards, valued at \$88.24, in 1930 to 14,205 cubic yards, valued at \$13,819.85, in 1928. (49)

Agriculture

Residents of Montgomery County are dependent to a great extent on agriculture for their existence. In the early days wild game was plentiful and furnished most of the meat. Corn, cotton, wheat, potatoes, and garden vegetables were the main crops. The cotton was used mostly for making clothing, and the lint was picked from the seed by hand. Practically all clothing was homespun. Leather for shoes was prepared at home and then generally taken to the community shoemaker. (50)

By 1900 peach production had become profitable: 7,731 bushels were harvested. (51) In 1934 the production had increased to 26,509 bushels. (52) Cotton production has declined, but there has been an increase in feed crops since 1900. There were 3,811 bales of cotton produced in 1900, (53) but production dropped to 1,400 in 1930 and 1,430 bales in 1939. (54) There were 14,950 head of cattle in the county in 1935, but this dropped to 11,796 in 1940. Production of honey has become profitable within the last decade and a total of 8,165 pounds were marketed in 1940. Corn took a big jump in 1940 when 156,610 bushels were produced, as compared with 58,720 in 1935. Oats increased from 8,883 to 10,242 bushels during the same time. Hay production has shown a steady increase in acreage, there being 5,257 in 1930, 10,037 in 1935, and 13,201 acres in 1940. The number of farms in cultivation has fluctuated. In 1930 there were 1,479, in 1935 there were 1,601, and in 1940 there were 1,341 in cultivation. The average size in 1930 was 89 acres, and average value was \$1,577. In 1935 the average size was 86.8 and average value \$1,117. In 1940 the average size increased to 102.9 acres and the value to \$1,336. The total value of farms and buildings in the county in 1930 was \$2,331,732; in 1935 the value was \$1,789,107; and in

1940, \$1,791,188. (55)

Forests

There are 432,000 acres of forest land in Montgomery County. The timber is mostly shortleaf pine, shortleaf hardwood, and mixed upland hardwood. Practically the entire county is in the Ouachita National Forest, (56) 287,741 acres being government owned. (57) In 1936 there were 6 sawmills in the county having capacities of from 1,000 to 19,000 board feet daily, 1 having a capacity of 20,000 board feet or over, and 1 cooperage plant. (58)

Recreation.

Owing to its natural beauty, its unspoiled scenery, and Governmental and State planning, Montgomery County is developing as a recreational area. Fish rearing ponds have been established at the site of a former sawmill at Mauldin, where the ponds formerly used to float logs to the mill have been utilized. (59) A Federal game refuge is maintained in the Muddy Creek area for the benefit of hunters in the Ouachita National Forest. The Albert Pike camp on the Blaylock and Polk Creek road near Norman is a beautiful recreational park where swimming, boating, and fishing are enjoyed by many visitors during the summer. The Womble-Silver road leaves United States Highway 270 about $2\frac{1}{2}$ miles west of Crystal Springs and leads to Norman through beautiful Crystal Mountain, opening up vast scenic panoramas. On this road a few miles from Norman is Collier Springs, with shelter and trails. Here water gushes from the ground at the rate of 3,000 gallons per hour. Farther along is Crystal campground, where swimming and picnicking facilities are found. (60)

Property Evaluation

Land was of little value in Montgomery County shortly after its creation. In 1845 there were 326 acres on the tax books and they were assessed at \$1,179. There were 58 slaves between the ages of 8 and 60, valued at \$22,800, and there was 1 sawmill assessed. The total evaluation for the county was \$46,776. (61) In 1900 the estimated value of real property of the county was \$882,041 and the assessed valuation was \$282,100. (62) Personal and real property assessed valuation reached a peak of \$2,079,254 in 1927, gradually declined to \$895,997 in 1938, but climbed in 1939 to \$936,232. (63) The figure dropped in 1940 to \$890,024. (64)

Transportation

In the early days "travel was on foot, in dugouts along the streams, on horse or muleback, in wagons or carts drawn by horses, or more frequently cattle, and the early vehicles were lubricated, not with oil or grease, but with pinetar from pineknots, which were to be had for the picking. In the coldest weather, when the tar became very stiff from the cold, fires had to be started under the spindles of the wagons to soften the tar so that the wagons might be more easily started". (65)

A map of Arkansas roads drawn in 1836 show well-defined roads from Hot Springs to Sulphur Spring, then in Hot Spring County, and another to Zebulon, Pike County, which crossed the southeastern part of the present Montgomery County. (66) In 1844 the General Assembly authorized John Shipp and Thomas M. Hughes to build a turnpike "from Squire John McKinley's, in Caddo Cave in Montgomery County to the southern boundary of Pike County, a distance of at least 40 miles..." This was a part of the road from the southern part of Missouri, through Fort Smith, to the Red River. (67) In 1851 an act was passed authorizing Fielding Strong to build a turnpike from Caddo Gap to Arkadelphia, Clark County. (68) The county now is served by United States Highway No. 270 and State Highway 8, 27, and 88. (69) It has 42.2 miles of bituminous surfacing, 60.2 miles of graveled roads, and 7.4 miles of graded roads, or a total of 109.8 miles of State highways, with 61.9 miles receiving State aid. (70) Lack of railroad facilities has hampered the development of Montgomery County. At present there are only 10.8 miles of railroad in the county, extending through Caddo Gap up to Norman, formerly known as Womble. (71) This road, known originally as the Gurdon and Fort Smith Railroad, was organized by lumber interests in 1900, but it was acquired by the Iron Mountain and constructed by that road in 1907 and 1908. The road is now a part of the Missouri Pacific system. The Caddo and Choctaw operate a freight line to Norman. (72)

Schools

The early schools of the county were subscription schools. Those who were unable to pay cash paid their tuition in produce. The term seldom lasted more than 3 months, and school generally was held in a log building used both for religious worship and school. The standard books were McGuffey's Reader and the Blue Back Speller. (73) The State paid \$215.28 into the county school fund from 1854 to 1856, and the county paid out \$178.23 of the fund. (74) In 1870 there was a total attendance in the county of 709 pupils, all of whom were white. (75) By 1900 the total enrollment had reached 2,391 and the average length of the school term was 60 days. There were 69 schools having property valued at \$6,935 and employing 51 teachers. (76) During the 1939-40 term there were 2,607 pupils enrolled of whom 22 were Negroes. Of the enumerated population of school age 86.4 per cent were enrolled, the fourth highest percentage of all counties in the State. (77) The first high school in the county was established at Mount Ida in 1887 by Prof. W. G. Fail, who, with 1 assistant, taught all the grades in a one-room building. (78)

Organized Religion

As in other counties of the State during the early days there was little organized religion. Services were held in private homes or under brush arbors by itinerant preachers. But the Bible was the main source of reading material in most households. (79) By 1850 there were 5 churches with total accommodations for 950 persons. The total property valuation of the churches was \$575. Of the 5 churches, 4 were union congregations and the other was Methodist. (80) In 1860 there was 1 Baptist church and 3 Methodist churches, with accommodations for 700 persons, and the total property valuation was \$1,350. (81) By 1890 there

were 51 congregations in the county, 28 church buildings valued at \$9,085, having a seating capacity of 1,650, and 1,580 members of the various congregations. (82) In 1926 all denominations had a total membership of 2,573, divided as follows: Baptist, 851; Churches of Christ, 315; Methodist, 318; Presbyterian, 294; and all others, 295. (83) A recent survey shows there are 54 churches in the county. They are: Baptist 24, Church of Christ 1, Church of God 6, Disciples of Christ 1, Independent 1, Methodist 8, Pentacostal 3, Presbyterian U.S. 9, and Universalist 1. (84)

Population

In the 1850 census the first taken after Montgomery County was created, there was a total population of 1,958, of which 66 were slaves, and 1 was a free Negro. (85) By 1860 the population had risen to 3,633, but in 1870, as a result of the Civil War, the number of inhabitants had dropped to 2,984. However, during the ensuing decades there was a steady increase (86) until the peak was reached in 1920 when there was a total of 11,112. Then began a decline and the 1940 census showed only 8,876 inhabitants in the county. (87) Norman a terminus of the railroad is the largest town in the county with a population of 512, and Mount Ida is next with 490. (88)

Newspapers

The first newspaper of record in the county was the Arkansas Mining Journal, published at Mount Ida from June 4, 1880, until June 28, 1881. In 1886 the Bear Mountain News was established at Bear or Black Springs by J. L. Wadley of Hot Springs. It was published about a year. The Montgomery County Times was published from 1911 to 1915. The News was established at Caddo Gap in 1911, but was soon suspended. The Womble News was established in 1911 and was succeeded by the Womble Review in 1913. It now is out of existence. The Montgomery County Democrat began publication at Mount Ida in 1914, but it also is out of existence. The Arkansas Hillbilly, a fortnightly humorous publication, began publication in 1920, but it also has been suspended. (89) The only paper now being published in the county is the Mount Ida Herald (90)

-
- (1) U. S. Bureau of the Census, Sixteenth Census, 1940, Population, First Series, Arkansas, p. 3
 - (2) Journal of the House of Representatives, 1844, p. 126
 - (3) Arkansas Geological Survey, Topographic Map of the State of Arkansas
 - (4) Ibid., Elevations in Arkansas, IX, 32, 57
 - (5) U. S. Department of Agriculture, Weather Bureau, Climatic Summary, Soc. 60, p. 16
 - (6) Ibid., p. 20
 - (7) Ibid., p. 22
 - (8) Arkansas, Bureau of Mines, Manufactures, and Agriculture, Biennial Report...1929-30, p. 196

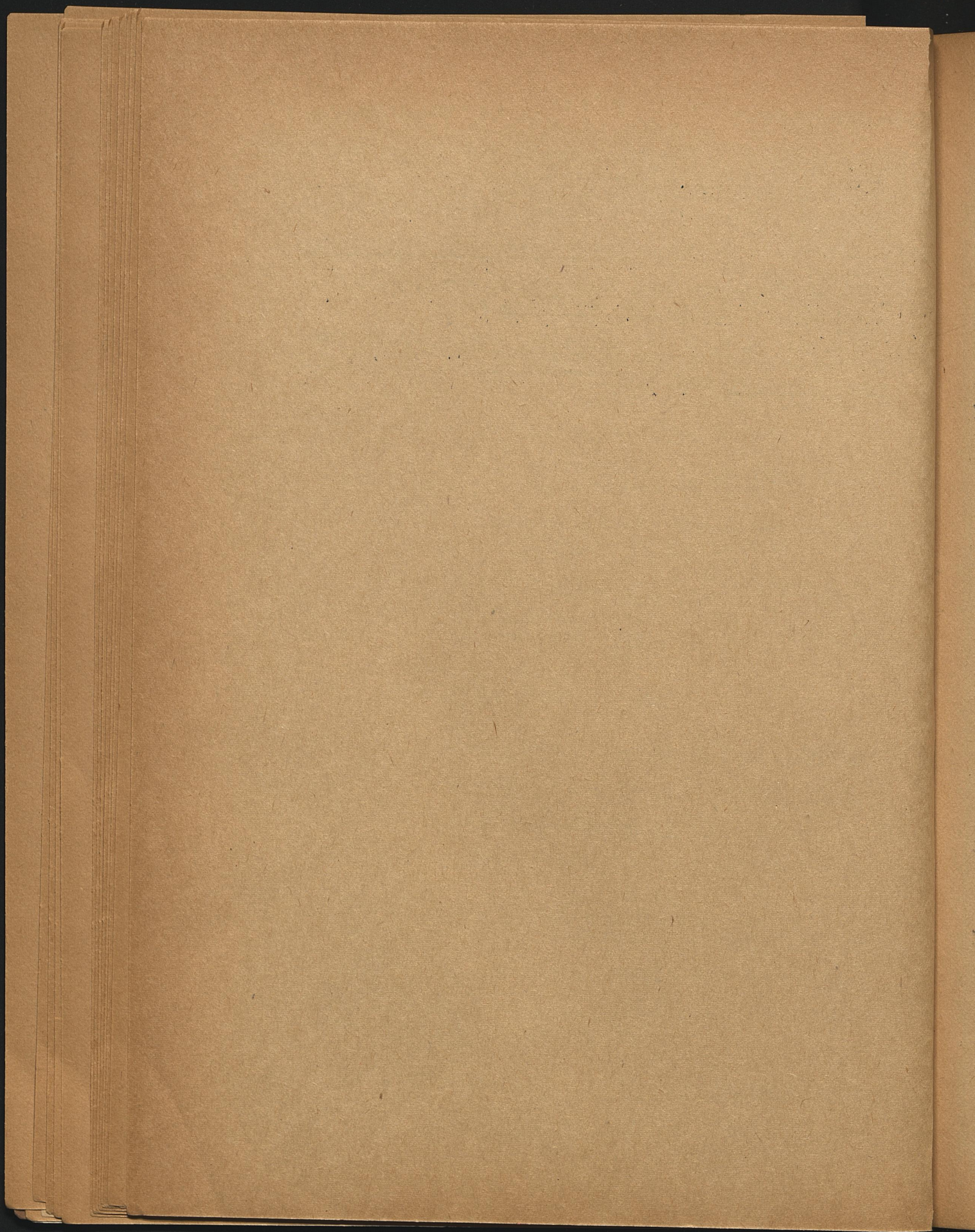
- (9) Arkansas Geological Survey, Topographic Map of the State of Arkansas
- (10) Arkansas State Planning Board, Arkansas Water Resources, p. 73
- (11) Arkansas Geological Survey, Topographic Map of the State of Arkansas
- (12) United States De Soto Expedition Commission, Final Report, [1939], p. 255
- (13) W. G. Whittington, "Mount Ida from 1836 to 1910", in Montgomery County Herald, Centennial Edition, June 11, 1936
- (14) A. Ark., 1842, p. 14
- (15) David Y. Thomas, Arkansas and Its People, II, 756
- (16) A. Ark., 1842, p. 17
- (17) U. S. Bureau of the Census, Sixteenth Census, 1940, Population, Arkansas, p. 8
- (18) County Court Record, vol. A, p. 203, see entry 3
- (19) Arkansas, Secretary of State, Civil Record, 1836-64, p. 430
- (20) County Court Record, Book F, pp. 124, 451
- (21) Montgomery County Herald, Centennial Edition, June 11, 1936
- (22) County Court Record, Book B, pp. 215, 336
- (23) County Court Record, Book E, p. 331
- (24) See Housing, Care, and Accessibility of Records, p. 16
- (25) A. Ark., 1845, p. 44
- (26) Ibid., p. 79
- (27) Ibid., 1846, p. 122
- (28) Ibid., 1848, 40
- (29) Ibid., p. 33
- (30) Ibid., 1858-59, p. 133
- (31) Ibid., 1873, p. 68
- (32) Ibid., p. 208
- (33) Ibid., 1874, p. 63
- (34) Ibid., 1917, I, 634
- (35) Ibid., 1925, p. 307
- (36) A. P. Vaught, Caddo Gap, Ark., interviewed by Evelyn Chapman, transcript of interview in files of Historical Records Survey Project, Little Rock
- (37) Fred W. Allsopp, Albert Pike, pp. 222-29
- (38) Arkansas Writers' Project, WPA, Arkansas: A Guide to the State, p. 338
- (39) Arkansas Gazette, Centennial Edition, June 15, 1936, p. 116-17
- (40) County Court Record, Book A, no page
- (41) U. S. Secretary of War, War of the Rebellion, Official Records of the Union and Confederate Armies, Series I, XXII, Part I, 778
- (42) Ibid., p. 769
- (43) U. S. Bureau of the Census, Manufactures of the United States in 1830, pp. 15-20
- (44) Ibid., Twelfth Census, 1900, Manufactures, IX, Part III, 26-28
- (45) Ibid., Sixteenth Census, 1940, Census of Manufactures: 1939, p. 4
- (46) Arkansas, Bureau of Mines, Manufactures, and Agriculture, op.cit., pp. 37-41
- (47) Arkansas Democrat, Dec. 12, 1879

- (48) Arkansas State Revenue Department, Arkansas State Severance Tax Report, 1940
- (49) Arkansas Geological Survey, Mineral Production Statistics of Arkansas for the Period 1880-1935, pp. 53-54
- (50) A. P. Vaught, Mrs. Malinda Ann Gubage, and Mrs. Julia Ann Jones, interviewed by Evelyn Vaught Chapman, transcript of interview in files of Historical Records Survey Project, Little Rock
- (51) U. S. Bureau of the Census, Twelfth Census, 1900, Agriculture, VI, Part II, pp. 622, 625
- (52) Ibid., Agriculture, 1935, Arkansas, Second Series, p. 25
- (53) Ibid., Twelfth Census, 1900, Agriculture, p. 622
- (54) U. S. Department of Agriculture, Arkansas Agricultural Experiment Station, Arkansas Cotton, 1928-1939, pp. 5, 13
- (55) U. S. Bureau of the Census, Sixteenth Census, 1940, Agriculture, Arkansas, pp. 14-59
- (56) Arkansas Forestry Commission, Wooden Riches, pp. 9-17
- (57) Hot Springs New Era, Feb. 1, 1941
- (58) U. S. Department of Agriculture, Forest Service, Forest Resources of the Ouachita Mountain Region of Arkansas, p. 19
- (59) Arkansas Democrat, Oct. 10, 1939
- (60) U. S. Department of Agriculture, Forest Service, Southern Region, Ouachita National Forest Arkansas-Oklahoma, pp. 12-18
- (61) Journal of the Senate, 1846, p. 16 of the appendix
- (62) U. S. Bureau of the Census, Special Report of the Census Office, Wealth, Debt, and Taxation, [1900] pp. 46, 47
- (63) Arkansas State Comptroller, Biennial Report...1938-40, p. 128
- (64) Arkansas Corporation Commission, Biennial Report...1939 and 1940, p. 36
- (65) W. G. Whittington, op. cit.
- (66) H. S. Tanner, A New Map of Arkansas, 1836
- (67) A. Ark. 1844, p. 55
- (68) Ibid., 1851, p. 284
- (69) Arkansas State Highway Commission, Map of the State Highway System of Arkansas, 1941
- (70) Arkansas State Highway Commission, Fourteenth Biennial Report... 1939-40, p. 126
- (71) Arkansas State Highway Commission, Twelfth Biennial Report...1935-36, p. 47
- (72) Missouri Pacific Railroad Company, Traffic Department, The Missouri Pacific Railroad, p. 39
- (73) Vaught, op. cit.
- (74) Journal of the Senate, 1856-57, appendix, pp. 32-35
- (75) U. S. Bureau of the Census, Ninth Census, The Statistics of the Population, 1870, p. 402
- (76) Arkansas, State Superintendent of Public Instruction, Biennial Report...1899-1900, pp. 155, 158
- (77) Arkansas State Board of Education and the State Commissioner of Education, Biennial Report...1938-1940, p. 93
- (78) Whittington, op. cit.
- (79) Vaught, op. cit.
- (80) U. S. Bureau of the Census, Seventh Census, 1850, The Statistics of the United States, pp. 561-62
- (81) Ibid., Statistics of the United States...in 1860, p. 355

Historical Sketch

(First entry p.24)

- (82) Ibid., Statistics of Churches...at the Eleventh Census: 1890, p. 53
(83) Ibid., Religious Bodies, 1926, Part 1, pp. 581-82
(84) Arkansas Historical Records Survey Project, Church Directory of Montgomery County, in files of Historical Records Survey Project, Little Rock, 1941
(85) U. S. Bureau of the Census, Seventh Census of the United States: 1850, pp. 536, 546
(86) Ibid., Twelfth Census, 1900, Population, I, Part 1, pp. 10,11.
(87) Ibid., Sixteenth Census, 1940, Population, p.3
(88) Ibid., p. 4
(89) Fred W. Allsopp, History of the Arkansas Press...pp. 267, 268
(90) Arkansas Press Association, Advertising Rate and Date Book of Arkansas Newspapers, 1940, p.13



(1)
14

(1)
14

(1)
14

(1)
14

(1)
14

(1)
14

(1)
14

(1)
14

(1)
14

(1)
14

(1)
14

(1)
14

(1)
14

(1)
14

(1)
14

(1)
14

(1)
14

(1)
14

(1)
14

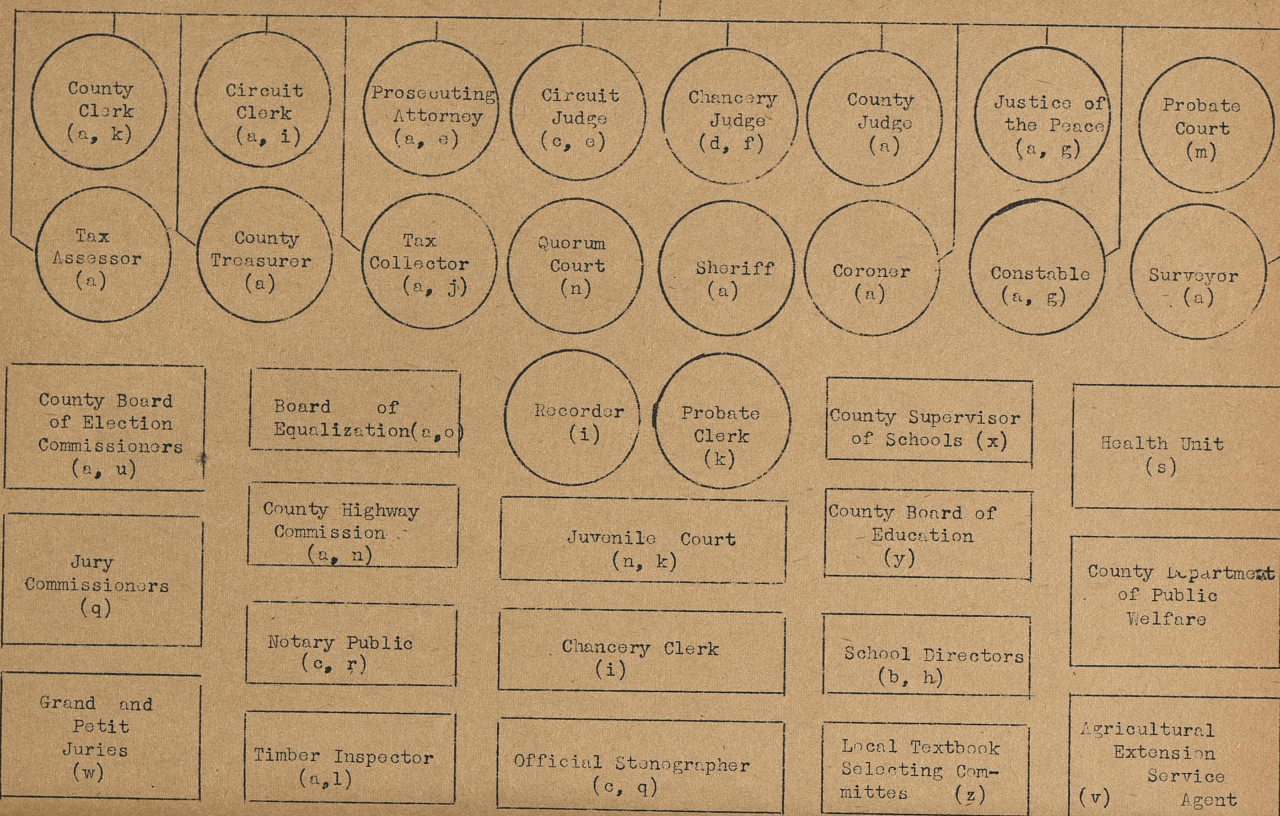
(1)
14

(1)
14

(1)
14

MONTGOMERY COUNTY GOVERNMENT, 1942

THE ELECTORATE



LEGEND

LEGEND

Offices shown in circles created by Constitution.
Offices shown in rectangles created by statute.

- (a) Two-year term of office.
- (b) Three-year term of office.
- (c) Four-year term of office.
- (d) Six-year term of office.
- (e) Elected by and for all counties in eighteenth judicial circuit, consisting of Garland and Montgomery Counties.
- (f) Elected by and for all counties in third chancery circuit, consisting of Garland, Grant, Hot Spring and Saline Counties.
- (g) Elected by and for political townships.
- (h) Elected by voters of school districts.
- (i) Circuit clerk is ex officio recorder and chancery clerk.
- (j) Sheriff is ex officio tax collector.
- (k) County clerk is ex officio clerk of the probate and juvenile courts, and of the Board of Equalization.
- (l) Surveyor is ex officio timber inspector.
- (m) Chancery judge presiding.
- (n) County judge presiding.
- (o) Appointed by quorum court.
- (p) Appointed by county judge.
- (q) Appointed by circuit judge.
- (r) Appointed by Governor.
- (s) Appointed by Arkansas State Board of Health.
- (t) Appointed by Arkansas State Board of Public Welfare.
- (u) Appointed by Arkansas State Board of Election Commissioners.
- (v) Appointed by University of Arkansas, College of Agriculture.
- (w) Jury venires selected by jury commission.
- (x) Appointed by County Board of Education for 1 and 2 years, subject to re-employment.
- (y) Five members, terms range from 1 to 5 years.
- (z) Appointed by board of school directors.

The
George
Street
building
constru
are 54
north
All fl
where
floors
illumina
room.

The
stone v
at the

The
located
courtho

Fac
Cou
is the
county
umes
unbound

Cou
office

Cir
east co
of 96 v
of unbo

Not
public.

Cir
floor o
court a
ing 36
drawers

Jur
of the
commiss

Cha
chancery
They co
11.4 cu
vault.

HOUSING, CARE, AND ACCESSIBILITY OF THE RECORDS

The courthouse of Montgomery County, at Mt. Ida, is bounded by James, George Streets, also East and West Streets, facing south on George Street. Highway 40 passes the courthouse on West and George Streets. The building was erected in 1923, at an approximate cost of \$40,000. It is constructed of native stone, with asphalt shingle roof. Outside dimensions are 54' x 60' x 28'. A hall runs through the full length of the building north and south on the first floor, where there are 5 offices and 1 vault. All floors are of concrete. A wooden stairway leads to the second floor where are located a large courtroom and jury and witness rooms. These floors are of wood. Walls and ceilings are plastered. The building is illuminated throughout with electricity and heated by wood heaters in each room.

The beautifully landscaped courthouse square is enclosed with a natural stone wall about 2 feet in height, with stiles on three sides and a gate at the back. Concrete sidewalls lead four ways from the courthouse.

The county department of Public Welfare and the county health unit are located in the Smith Building. The county jail is at the back of the courthouse.

Facilities are provided for the various county agencies as follows:

County Court. In southwest corner on the second floor of the courthouse is the office of the county judge. No records are kept in this office. The county clerk is custodian of all court records. They consist of 11 volumes occupying approximately 16.5 linear feet, and 4.7 cubic feet of unbound records in 13 steel and 5 wooden file drawers, in the county vault.

County Highway Commission. This agency holds its meetings in the office of the county judge. No records were found in this inventory.

Circuit Clerk as Recorder. The recorder's office is in the Northeast corner of the first floor of the courthouse. His records consist of 96 volumes occupying approximately 144 linear feet and 7.5 cubic feet of unbound records in 29 steel file drawers in the county vault.

Notary Public. The county does not provide office space for notary public.

Circuit Court. The courtroom occupies the greater part of the second floor of the courthouse. No records are kept there. The records of the court are kept by the circuit clerk. They consist of 24 volumes occupying 36 linear feet and 36 cubic feet of unbound records in 32 steel file drawers in the county vault.

Jury Commission. A room in the southeast corner of the second floor of the courthouse is used as a jury room. Records made by the jury commission form a part of the circuit court records.

Chancery Court. The courtroom of the circuit court is used by the chancery court. The records are in the custody of the circuit clerk. They consist of 14 volumes occupying approximately 21 linear feet and 11.4 cubic feet of unbound records in 44 steel file drawers in the county vault.

Housing, Court, and Accessibility
of the Records

(First entry p. 25)

Probate Court. Probate court is held in the general court room on the second floor. The records are in the custody of the county clerk. They consist of 16 volumes occupying 24 linear feet and 3.5 cubic feet of unbound records in 12 steel file drawers and 1 pasteboard box in the county vault.

Juvenile Court. Juvenile proceedings are usually held in the county judge's office. The county clerk is custodian of the records.

Justice of the Peace. Sessions of the justice of the peace courts are held within the boundaries of the townships served by the respective courts. Quarters for these courts are not provided for by the county. Non-current records are returned to the county clerk. They consist of 9 volumes occupying 13.5 linear feet in the county vault.

Prosecuting Attorney. This official has no office in the Montgomery County courthouse and keeps no records.

Sheriff. The sheriff's office is in the southwest corner of the first floor of the courthouse. His records, consisting of 1 volume occupies 1.5 linear feet are in the county vault.

Coroner. No office space is furnished the coroner. His inquisition records become a part of the circuit court records and are delivered to the circuit clerk.

Constable. The constables have no offices in the courthouse. They keep no records.

Quorum Court. Sessions of the quorum court are held in the general courtroom. Its records consist of 1 file drawer occupying approximately 3 cubic feet, in the custody of the county clerk.

County Clerk. The county clerk's office is in the northeast corner of the first floor of the courthouse. His records consist of 288 volumes occupying approximately 432 linear feet and 2.1 cubic feet of unbound records in 8 steel file drawers in the county vault.

Tax Assessor. The assessor's office is in the northwest corner of the first floor. His records are placed in the custody of the county clerk. See entries 89, 91, and 93.

Board of Equalization. This agency has no office in the courthouse. Space is provided for its meetings. It has 1 volume occupying 1.5 linear feet in the county vault.

Tax Collector. The sheriff is ex officio collector and the records made by him are in the custody of the county clerk. See entries 90 and 92.

Housing, Care and Accessibility
of the Record

(First entry p. 25)

County Treasurer. The office of the treasurer is in the southeast corner of the first floor. The 2 volumes reported in this inventory occupy approximately 3 linear feet in the treasurer's office.

Director of County Audits. There are no regular quarters in the courthouse for this official. Copies of the auditor's reports are in the custody of the county clerk. See entry 83.

County Superintendent of Schools. This official occupies an office in the southeast corner of the second floor of the courthouse. No records were found in this inventory.

Health Unit. This agency is located in the Smith Building. No records were found in this inventory.

County Department of Public Welfare. The offices of this agency are located in the Smith Building. No records were found in this inventory.

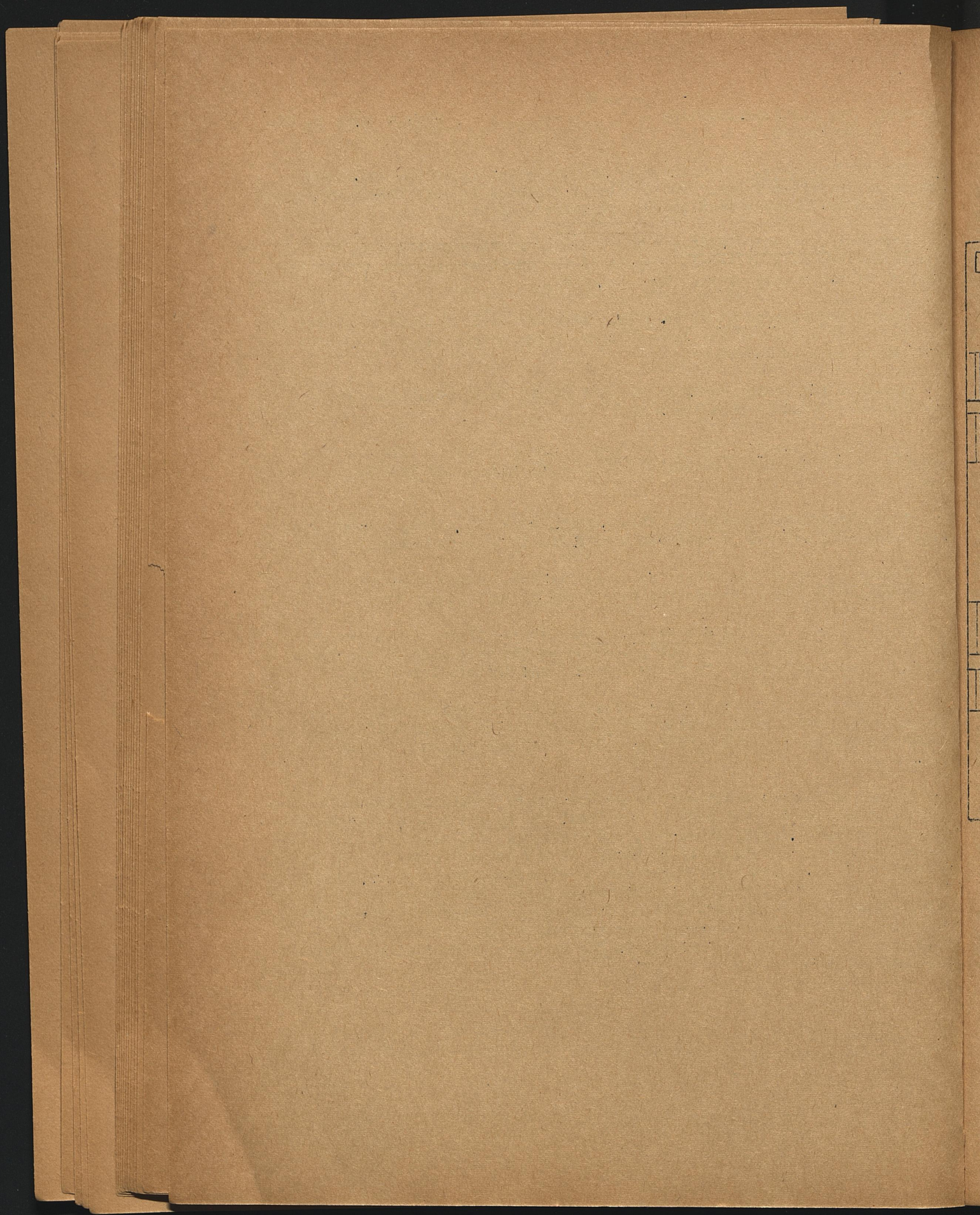
Confederate Pension Board. This agency, while inactive, has never been abolished by law. No records were found in this inventory.

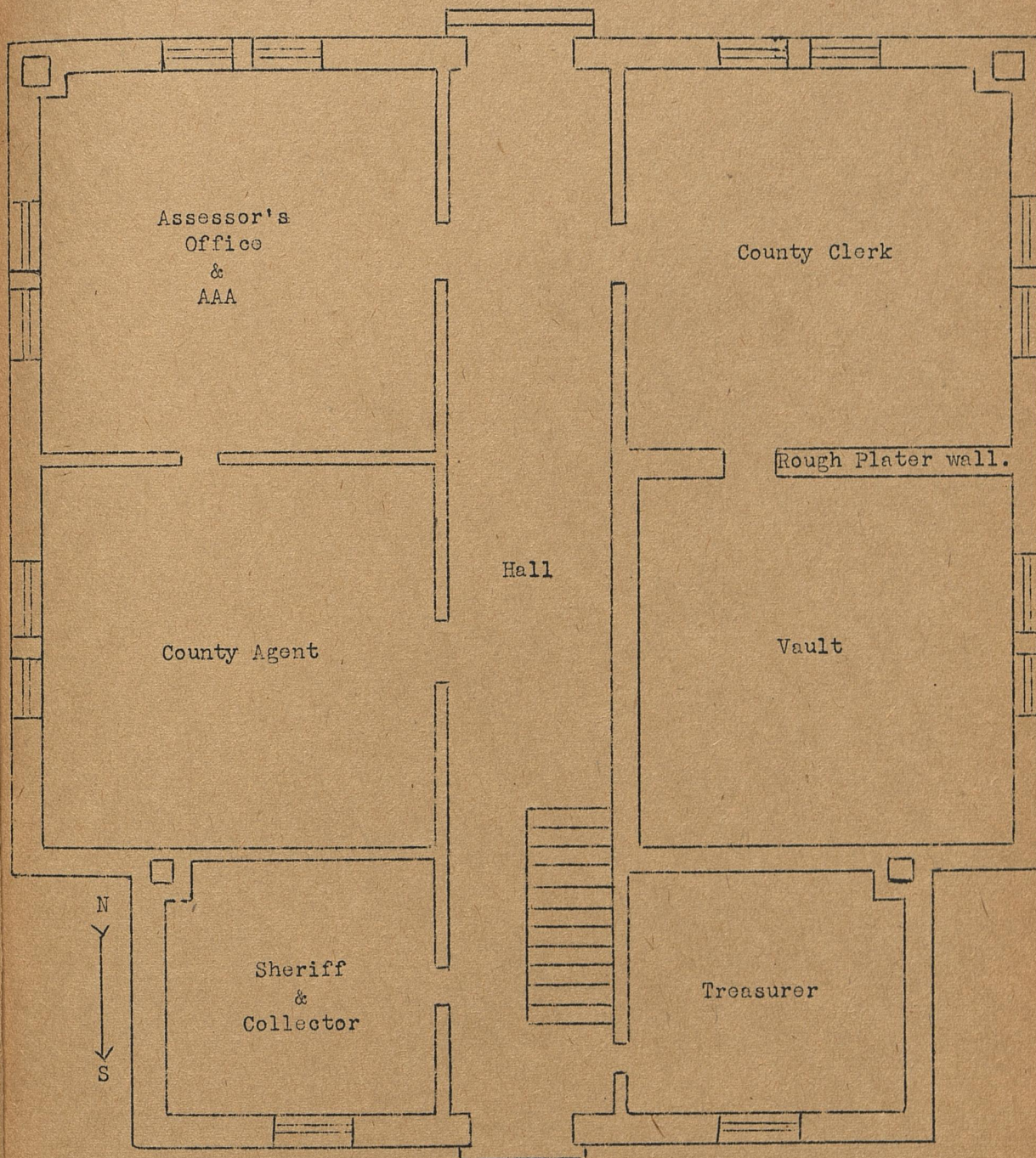
County Surveyor. No office space is furnished for the surveyor of Montgomery County. No records were found in this inventory.

Agricultural Extension Service Agent. These offices are shown on the floor plans as "County Agent", located on the west side of the first floor of the courthouse. No records were found in this inventory.

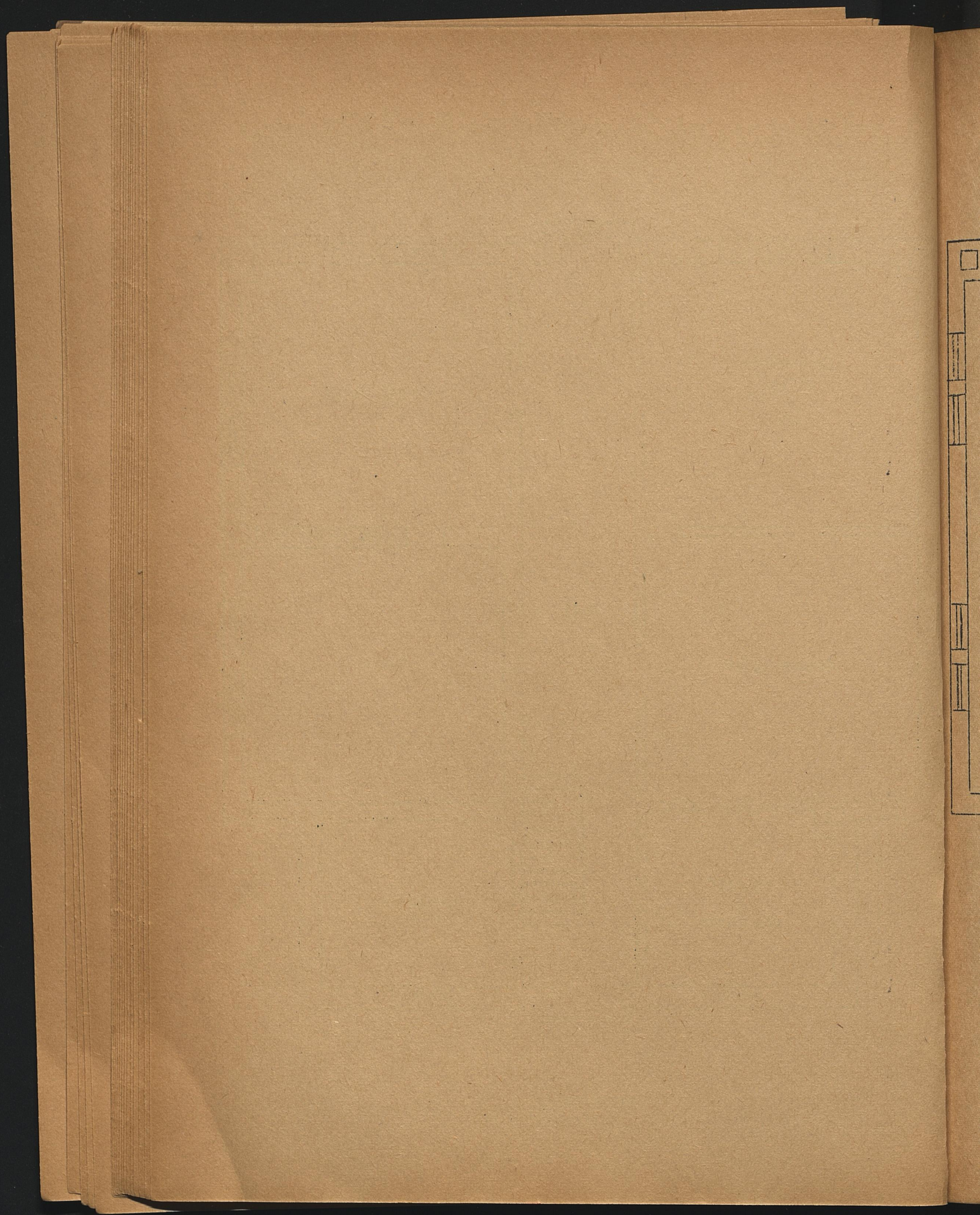
For examples of the type of records kept by the Agricultural Extension Service Agents, Health Unit, Department of Public Welfare, Confederate Pension Board, and County Surveyor, see Faulkner County inventory.

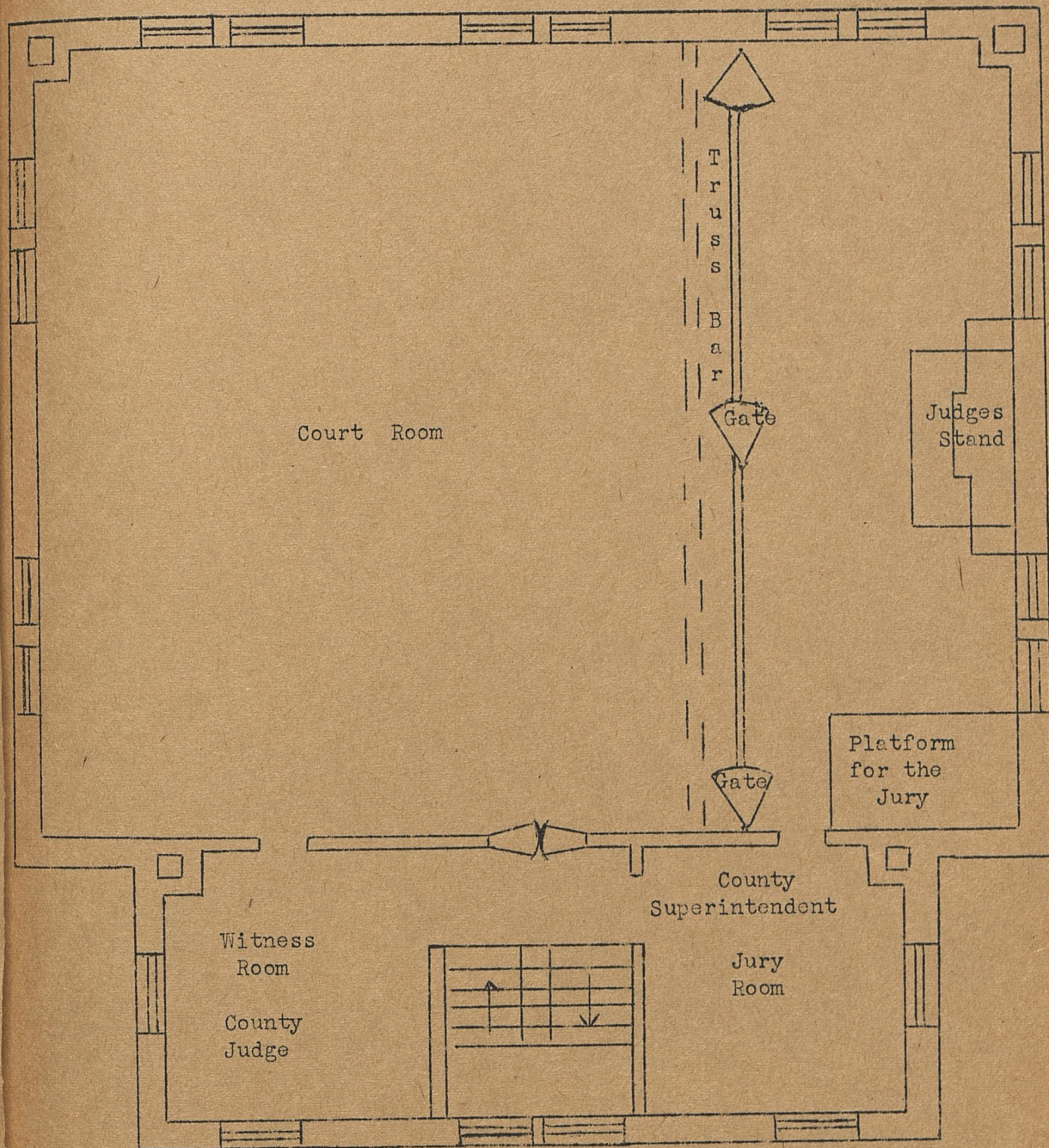
Vault. One large vault serves the Montgomery County courthouse. It is located on the east side of the first floor, and houses records of the clerks, the sheriff, treasurer, and assessor. Its dimensions are 20' x 20'. It is electrically lighted. It has one door, two windows protected by steel shutters, thick plastered walls, plastered ceilings, concrete floors. Shelving is approximately 5 feet high covering three sides of the room, constructed of wood and steel. Records in the vault consist of 449 volumes occupying approximately 673.5 linear feet and 37.8 cubic feet of unbound records in 139 steel and 5 wooden file drawers and 1 pasteboard box.





FIRST FLOOR
Scale $1/8" = 1'$





SECOND FLOOR

less

Orig
amou
orde
cont
15,
10 x

Orig
trio
sign
amin
date

Rece
and
matt
of t
purch
tran
trio
part
orde
Also
1908
proc
79;
rant
and
coun
of r
1868
in l

COUNTY COURT

All records of the county court are kept in the county vault unless otherwise specified in the entries.

1. CLAIMS ALLOWED, 1909--., Est. 8,000 instruments in 12 steel f. d. (1-12) and 5 wooden f. d. (unlabeled).

Original claims for allowance, showing name of claimant, date filed, amount of claim, nature of service rendered or material furnished, order of approval of the county judge, and judge's signature. Also contains: Incidental fillings of disposed of probate court cases, 1909-15, entry 62. Arr. chron. by date filed. No index. Hpf. Steel f. d., 10 x 5 x 13; wooden f. d., 5 x 5 x 11.

2. BRIDGES AND BRIDGE COMMISSIONS, 1923-24. 30 instruments in 1 steel f. d.

Original order of appointment of commissioners for road improvement districts, showing names of commissioners, improvement district number, signatures of members of board of commissioners, date filed, date examined and approved by county judge, and his signature. Arr. chron. by date filed. No index. T. 10 x 5 x 13.

3. COUNTY COURT RECORDS, 1845-63, 1865--. 11 vols. (B, B, C-J, 1 vol. unlabeled). Titles vary slightly.

Record of proceedings of the county court, 1845-63, 1865-73, 1874--., and of the board of supervisors, May 5, 1873-October 13, 1874, in such matters as the appointment of county officials, matters of incorporation of towns and cities, construction of county buildings, roads and bridges, purchase and sale of county property, issuance of bonds, petitions for transfer of school children, elections, formation of improvement districts, and allowance of claims, showing date of proceedings, names of parties affected by the proceedings, nature of proceedings or claim, order of court concerning each action, and signature of county judge. Also contains: Town plats, 1855-72, entry 26; insanity proceedings, 1905-14, and incidental recordings, 1915-21, entry 74; juvenile court proceedings, 1925-30, entry 75; quorum court proceedings, 1880--., entry 79; appropriation record, 1880-1939, entry 80; register of county warrants, 1857, entry 84, and equalization board proceedings, 1869-1928, and incidental recordings, 1929-35, entry 116. Arr. chron. by date of court term. No index, 1845-63, 1865-91; indexed alph. by first letter of name of claimant or other interested party, 1892--. H., 1845-63, 1865-1921; t., 1922--. Aver. 640 pp. 18 x 12 x 4. 2 vols., 1845-63, in bad condition.

CIRCUIT CLERK AS RECORDER

All records of the recorder are kept in the county vault unless otherwise specified in the entries.

4. [RECORDER'S MISCELLANEOUS PAPERS], 1854-1939. Est. 2,500 instruments in 6 pigeon holes.

Original miscellaneous papers filed with the recorder including: Incidental filings of mortgages, 1906-39, entry 13; bills of sale, 1907-11, and incidental filings, 1912-20, entry 27; circuit court civil case papers, 1881-90, and incidental filings, 1891-1905, entry 40; disposed of chancery court cases, 1893-1908, and incidental filings, 1909-37, entry 56; disposed of probate court cases, 1854-1903, and incidental filings, 1904-5, entry 62; and redemption certificates, 1881-1937, entry 99. No obvious arr. No index. H. 4 x 3 x 10

Real Property Conveyances

Deeds

5. RECORDED DEEDS, 1933--. Approx. 200 instruments in 1 steel f. d. (1). 1902-32, and incidental filings, 1933--, in Recorded Mortgages and Deeds, entry 13.

Original deeds executed to convey title to real property by public or private sale, showing names of grantor and grantee, consideration, legal description of property, signature of grantor, acknowledgment, and date filed. Included also are the following papers:

- i. Lis pendens notices, 1935-36, stating that a lien might be established against certain designated property, showing names of plaintiff, defendant, and person in possession of property, legal description of property, and date filed.
- ii. Powers of attorney, 1936, showing name of person conferring power, name of person upon whom power is conferred, signature of conferee, and date filed.
- iii. Schedule of wife's separate property, 1933, showing name of property owner, date executed, description and valuation of each item of property, signatures of interested parties, acknowledgment, and date filed.

Arr. chron. by date filed. No index. H., tpf. 10 x 5 x 13.

6. DEED RECORD, 1845--. 50 vols. (A-U, 1-29). Titles vary being descriptive in some instances of the contents of certain vols. in which conveyances of standardized or special form may be grouped. Incidental recordings, 1883-1933, in Mortgage Record, entry 15.

Record of instruments executed to convey title to real property by public or private sale, showing names of grantor and grantee, consideration, legal description of property, copy of signature of grantor

acknowledgment, date filed, and recording certificate. Included also are the following:

- i. Court orders affecting land titles, record of, 1917-37, showing number and style of case, legal description of property involved, names of parties affected by order, date executed, copy of signature of acting judge, date filed, and recording certificate.

Also contains: Oil and gas leases, 1906-19, 1926--; and incidental recordings, 1920-25, entry 10; real estate leases, 1886-1938, entry 12; real estate mortgages, 1847-78, and incidental recordings, 1879-1919, entry 15; mortgage releases, 1882--; entry 19; lis pendens, 1932-38, and incidental recordings, 1916-31; entry 24; chattel mortgages, 1869-73; entry 31; ministers' credentials, 1846--; entry 35; agreements, 1852--; entry 36; powers of attorney, 1846--; entry 37; public millers' licenses, 1849-1930, entry 38; separately owned property, 1879--; entry 39; wills, 1845-56, entry 65; incidental recordings of marriages, 1845-49, entry 103; estrays, 1845-49, entry 108, and marks and brands, 1847-48, entry 109. Arr. chron. by date filed. No index, 1845-65; indexed alph. by first letter of name of grantor, 1866-1906; for index, 1907--; see entries 7, 8, and 9. Aver. 624 pp. 18 x 13 x 3.

7. GENERAL INDEX TO DEED AND MORTGAGES, 1907-14. 1 vol. (1).

Direct and indirect index to Deed Record, entry 6, and Mortgage Record, entry 15. Direct section shows information as in entry 8. Indirect section shows information as in entry 9. Direct section arr. alph. by first letter of name of grantor; indirect, arr. alph. by first letter of surname of grantee. Hpf. 700 pp. 18 x 13 x 4.

8. GENERAL INDEX TO DEED AND MORTGAGES (Direct), 1915--. 1 vol. (2).

Direct index to Deed Record, entry 6, Mortgage Record, entry 15, showing names of grantor and grantee, date filed, date of instrument, and book and page of record entry. Hpf. 700 pp. 18 x 13 x 4.

9. GENERAL INDEX TO DEEDS AND MORTGAGES (Indirect), 1915--. 1 vol. (2).

Indirect index to Deed Record, entry 6, and Mortgage Record, entry 15, showing names of grantee and grantor, date filed, date of instrument, and book and page of record entry. Hpf. 700 pp. 18 x 13 x 4.

Leases

10. OIL AND GAS LEASE RECORD, 1920--. Last entry 1925, 2 vols. (A, B), 1906-19, 1926--; and incidental recordings, 1920-25, in Deed Record, entry 6.

Record of oil and gas leases, showing names of lessor and lessee, legal description of real estate concerned, consideration, date and terms of lease, acknowledgment, and recording certificate. Arr. chron. by date filed. No index. tpf. Aver. 412 pp. 15 x 11 x 3.

Circuit Clerk as Recorder

(11-16)

11. MINING LAND RECORD, 1875-80, 1884--. 8 vols. (4 vols. unlabeled, A-D.)

Record of mining claim location notice, showing name of party locating claim, description of land, where found, description of lode or vein, copy of signature of claimant, acknowledgment, date filed, and date recorded. Arr. chron. by date filed. Indexed alph. by first letter of surname of locator. H., 1875-1931; t., 1932--. Aver. 624 pp. 18 x 13 x 2 $\frac{1}{2}$.

12. (RECORD OF REAL ESTATE LEASES), 1886-1938. In Deed Record, entry 6; incidental recordings, 1913-30, in Mortgage Record, entry 15.

Record of contract leasing property for a stated time, showing names of lessor and lessee, date and terms of lease, legal description of property, consideration, date of expiration of lease, signatures of lessor and lessee, acknowledgment, date filed, and recording certificate.

Mortgages

13. RECORDED MORTGAGES AND DEEDS, 1902--. 350 instruments in 1 steel d. (1). Incidental filings, 1906-39, in [Recorder's Miscellaneous Papers], entry 4.

Original mortgages on real estate, showing names of mortgagor and mortgagee, consideration, legal description of property, date and terms of mortgage, signature of mortgagor, and date filed. Also contains: Deeds, 1902-32, and incidental filings, 1933--, entry 5. Arr. chron. by date filed. No index. hpf. 10 x 5 x 13.

14. FARM SECURITY ADMINISTRATION, 1935--. Est. 900 instruments in 3 steel f. d. (1-3).

Original mortgage made to Farm Security Administration, showing information as in entry 13. Arr. chron. by date filed. No index. tpf. 10 x 5 x 13.

15. MORTGAGE RECORD, 1879--. 21 vols. (A-I, 1-12). 1847-78, and incidental recordings, 1879-1919, in Deed Record, entry 6.

Record of real estate mortgages, showing information as in entry 13. Included also are:

- i. Promissory notes, record of, 1881-95, showing name of party making note, name of party to whom note is made, date executed, rate of interest, date due, date filed, and recording certificate.

Also contains: Incidental recordings of deeds, 1883-1933, entry 6; incidental recordings of real estate leases, 1913-30, entry 12; Federal Land Bank mortgages, 1919-39, entry 16; Home Owner Loan Corporation mortgages, 1933-34, entry 17; mechanics' liens, 1880-88, entry 21; United States tax liens, 1921-26, entry 23; lis pendens, 1910-31, entry 24; bills of sale, 1880-; 925, entry 28; chattel mortgages, 1880-1932, entry 31, incidental recordings of agreements, 1881--, entry 36; incidental recordings of power of attorney, 1906-31, entry 37; incidental recordings of wife's separately owned property, 1931-21, entry 39. Arr. chron. by date filed. Indexed alph. by first letter of surname of mortgagor, 1879-1919 for index 1918--, see entries 7, 8, and 9. hpf., 1879-1936; tpf., 1937--. Aver. 65 pp. 18 x 12 x 3.

Circuit Clerk as Recorder

(17-25)

17. (HOME OWNERS LOAN CORPORATION, MORTGAGE RECORD), 1933-34. In Mortgage Record, entry 15.

Record of mortgages held by the Home Owners Loan Corporation, showing information as in entry 13.

18. ORDERS FOR RELEASE OF MORTGAGE, 1926--. 200 instruments in 1 steel f. d. (1).

Orders from the mortgagee releasing mortgage lien upon real property, showing date of order, names of mortgagor and mortgagee, date of original mortgage, description of property, signature of mortgagee, and date filed. Arr. chron. by order date. No index. H. 10 x 5 x 13.

19. (RECORD OF MORTGAGE RELEASES), 1882--. In Deed Record, entry 6. Record of orders for release of mortgages, showing information as in entry 18.

20. LIENS AND LIS PENDENS, 1919--. In Chattel Mortgage File, entry 29.

Original liens filed by mechanics and materialmen upon property of another for security of debt for services, showing name of person imposing lien, character of lien, description of property, name of person against whom lien is filed, signature of lien holder, acknowledgment, and date filed.

21. (RECORD OF MECHANICS LIEN), 1880-88. In Mortgage Record, entry 15. Record of mechanics liens, showing information as in entry 20.

22. (RECORD OF UNITED STATES TAX LIENS), 1921-26. In Mortgage Record entry 15.

Notice of United States tax liens filed under the authority of the internal revenue laws for the purpose of establishing a lien against the estates of delinquent tax payers, showing date and number of lien, name and address of tax payer, kind of tax, date of taxable period, amount of tax and penalty, name of collector, acknowledgment, and recording certificate.

23. (ORDER OF APPROVAL AND OLD AGE PENSION), 1937--. In Mortgage Record, entry 15.

Record of orders of approval and old age pension certificates recorded to establish liens against the estates of persons granted old age pensions, and record of release of lien, showing assigned number of grant, amount of pension, name of pensioner, date payment commenced, names of Governor and members of Arkansas State Board of Public Welfare, marginal notation of release of lien, and signature of recorder.

24. (RECORD OF LIS PENDENS), 1910-38. 1910-31, in Mortgage Record, entry 15; 1932-38, and incidental recordings, 1916-31, in Deed Record, entry 6.

Record of lis pendens, showing information as in entry 51.

Survey and Plats

25. MISCELLANEOUS MAPS AND BLUE PRINTS, 1888-1929. 47 instruments on top of cabinet.

Original maps and blue prints of roads, bridges, railroads and county

buildings, showing date filed, date of survey, name of town site, and signature of clerk or recorder. No obvious arr. No. index. H. 24 x 18 x 10.

26. (PLATS OF TOWNS), 1855-1929. 1855-72 in County Court Record, entry 3; 1873-1929, and incidental recordings, 1860-72 in Deed Record, entry 6. Recorded copies of plats of towns, showing information as in entry 25.

Personal Property

Sales

27. (BILLS OF SALE), 1907-- on Chattel Mortgage Filed, entry 29; 1907-11, and incidental filings, 1912-20 in Recorders Miscellaneous Papers, entry 4. Original instruments conveying title to personal property, showing names of grantor and grantee, terms of sale, itemized listing of property sold, signature of grantor, acknowledgment, and filing certificate.
28. (RECORD OF BILLS OF SALE), 1880-1925. In Mortgage Record, entry Record of bills of sale, showing information as in entry 27.

Mortgages

29. CHATTEL MORTGAGE FILED, 1912--. Est. 5,100 instruments in 17 steel f. d. (1-17). Original mortgages executed for the purpose of conveying lien upon personal property to secure payment of debt, showing date executed, name of mortgagor and mortgagee, amount of loan, legal description of property, terms, signature of mortgagor, acknowledgment, and date filed. Also contains: Liens, 1919--, entry 20; bills of sale, 1912--, entry 27. Arr. chron. by date filed and alph. thereunder by first letter of surname of mortgagor. No index. Hpf., tpf. 10 x 5 x 13.
30. FEDERAL CROP LOANS, 1931--. Est. 1,500 instruments in 5 steel f. d. (1-5). Original mortgages given to Farm Credit Administration as security for emergency crop loan, showing names and post office address of mortgagor and mortgagee, description of property upon which crop is to be raised, date, amount, and terms of mortgage, acknowledgment, and date filed. Arr. chron. by date filed and alph. thereunder by first letter of surname of mortgagor. No index. tpf. 10 x 5 x 13.
31. (RECORD OF CHATTEL MORTGAGES), 1869-75, 1880-1932. 1869-75 in Deed Record, entry 6; 1880-1932 in Mortgage Record, entry 15. Chattel mortgages recorded in full, showing information as in entry 29.
32. MINUTES OF MORTGAGE RECORD FILED (Chattel), 1884--. 10 vols. (A, A, C-J). Chronological listing of chattel mortgages, showing date filed, names of mortgagor and mortgagee, date of instrument, amount of mortgage, date due, description of property, and remarks. Arr. shron. by date filed. Indexed alph. by first letter of surname of mortgagor. Hpf. Aver. 347 pp. 18 x 13 x 3.

Bonds, Commissions, and Credentials

33. BOND (Official), 1908--. 250 instruments in 1 steel f. d. Original bonds filed by county officials guaranteeing faithful performance of duties, showing name of officer, name of office to which elected or appointed, amount of bond, period for which made, signatures of principal and sureties, and date filed. Arr. chron. by date filed. No index. Hpf. 10 x 5 x 13.

34. BOND RECORD, 1868--. 2 vols. Title varies: Bond Docket, 1868-1925.

Record of official bonds, showing information as in entry 33. Also contains: Indictments, 1879-82, and incidental recordings, 1883-84, entry 54, and appointment of deputies, 1876-90, entry 114. Arr. chron. by date filed. Indexed alph. by first letter of surname of official. H. Aver. 652 pp. 15 x 4 x 3.

35. MINISTERS CREDENTIALS, (Record of), 1846--. In Deed Record entry 6; incidental recordings, 1852-1927, Marriage Record, entry 103.

Record of ministers credentials, showing date of instrument, name of minister, denomination with which he is affiliated, date ordained and recording certificate.

Miscellaneous

36. (RECORD OF AGREEMENTS), 1852--. In Deed Record, entry 6; incidental recordings, 1881--. in Mortgage Record, entry 15.

A record of covenants between two or more persons or firms, showing names of contracting parties, date of instrument, purpose and terms of agreement, copy of signatures of contracting parties, acknowledgment, and recording certificate.

37. (RECORD OF POWER OF ATTORNEY), 1846--. In Deed Record, entry 6; incidental recordings, 1906-31, in Mortgage Record, entry 15.

Record of powers of attorney, showing information as in entry 5ii.

38. (PUBLIC MILLERS' LICENSES), 1849-1930. In Deed Record, entry 6; incidental recordings, 1876, in Marriage Record, entry 103.

Record of public miller's license, showing name and post office address, of miller, date of license, copy of signature of miller, date filed, and recording certificate.

39. (SCHEDULE OF WIFE'S SEPARATE PROPERTY), 1879--. In Deed Record, entry 6; incidental recordings, 1913-21, in Mortgage Record, entry 15.

Record of list of property owned by married woman in which her husband has no interest, showing information as in entry 5iii.

CIRCUIT COURT

All records of the circuit court are kept in the county vault unless otherwise specified in the entries.

Civil Division

Case Papers

40. CIVIL PASSED (Case Papers), 1891--. Est 2,400 instruments in 16 steel f. d. (labeled by contained letters of the alph.). 1891-90, and incidental filings, 1891-1905, in [Recorders' Miscellaneous Papers], entry 4.

Original papers of civil cases disposed of in circuit court including petitions, pleadings, motions, subpoenas, official transcripts with appeal cases including appeal bonds, and mandates of the Arkansas State Supreme Court. Each instrument shows number and style of case, nature of instrument, names of affected parties, and filing certificate. Arr. alph. by first letter of surname of pltf. and chron. thereunder by date filed. No index. H. 10 x 5 x 13.

41. CIVIL CIRCUIT COURT CASES (Current), 1940--. 150 instruments in 1 steel f. d.

Original papers of civil cases pending in circuit court, showing information as in entry 40. Arr. alph. by first letter of surname of pltf. and chron. thereunder by date filed. H. 10 x 5 x 13.

Proceedings

42. CIRCUIT COURT DOCKET, 1845--. 6 vols. (3 vols. unlabeled, 2 1, 3). Titles vary slightly.

Minutes of proceedings in civil and criminal cases in circuit court. Civil docket shows case number, names of litigants and their attorneys, cause of action and date of proceedings. Criminal docket shows case number, names of defendants and their attorneys, date filed, offense charged, court orders, date of orders, names of witnesses, appeal or indictment, and witnesses' and clerks' fees. Also contains: Incidental recordings of probate docket, 1873, entry 72. Arr. numer. by case no. No index. Aver. 200 pp. 16 x 12 x 2.

43. CIRCUIT COURT RECORD, 1850--. 6 vols. (1 vol. unlabeled, B-F). Record of civil and criminal cases in circuit court. Civil cases show number and style of case, date and nature of proceedings, names of attorneys, interested parties, clerk and sheriff. Criminal cases show style and number of case, date of proceedings, name of attorney, offense charged, penalty, order of custody, name of grand and petit jurors, and signature of presiding judge. Arr. chron. by date of court term. No index, 1850-57; indexed alph. by first letter of surname of deft., 1858-H., 1850-1902; t., 1913--. Aver. 296 pp. 17 x 10 3/4 x 2.

Naturalization

44. UNITED STATES OF AMERICA (Department of Commerce and Labor) PETITION FOR NATURALIZATION, 1907--. Last entry 1931. 1 vol. Record of petition by aliens to become citizens of the United States and

permanently reside therein, showing name, age, occupation, personal description, place of birth, last foreign residence and allegiance, date of arrival in this country, name of vessel on which he arrived, present place of residence in the United States, and oath of intention to renounce allegiance to any government other than that of the United States. Arr. chron. by date filed. Index alph. by first letter of surname of alien. Hpf. 51 pp. 18 x 12 x 1.

Judgments and Executions

45. TRANSCRIPTS OF JUDGMENTS, 1909-36. 50 instruments in 1 steel f. d. Original transcripts of judgments made by justices of the peace and filed in the circuit court for execution, showing number and style of case, judgment date, and date filed. Arr. chron. by date filed. No index. T. 10 x 3 x 13.

46. JUDGMENT DOCKET, 1868--. 2 vols. (1,2). Record of judgments rendered in circuit court, showing case number, names of parties to suit, party against whom judgment is rendered, date and nature of judgment, amount of judgment and costs, by whom paid, and book and page of record entry. Arr. chron. by date filed. Indexed alph. by first letter of surname of judgment debtor. Hpf. aver. 242 pp. 15 x 12 x 2.

47. EXECUTION, 1909-38. 50 instruments in 1 steel f. d. Original execution orders issued to enforce payment of judgment, showing case number, names of plaintiff and defendant, judgment date, execution date, and amount of judgment, interest and costs. Arr. chron. by date filed. No index. H. 10 x 3 x 13.

48. EXECUTION DOCKET, 1889--. 1 vol. (1). Record of execution orders, showing information as in entry 47. Arr. numer. by case no. No index. Hpf. 240 pp. 15 x 11 x 2.

49. FEE BOOK CIRCUIT COURT (Civil and Criminal), 1860-81, 1883-1918. 3 vols. (2 vols. unlabeled, 2). Record of fees and costs accrued in civil and criminal cases in circuit court. Civil fees show information as in entry 50. Criminal fees show information as in entry 55. Also contains: Chancery fees, 1868-81, 1883-87, entry 61. Arr. chron. by term of court. Civil fees indexed alph. by first letter of name of pltf.; criminal, indexed alph. by first letter of surname of deft. Hpf. Aver. 240 pp. 18 x 12 x 3.

50. CIVIL FEE BOOK, 1917--. 1 vol. (dated) Itemized record of all fees and costs due in civil cases, showing number and style of case, names of litigants, date fees incurred, total amount, and remarks. Arr. chron. by date filed. Indexed alph. by first letter of name of pltf. Hpf. 238 pp. 13 x 10 x 2.

Criminal Division
(See also entries 42,43)

Case Papers

51. CRIMINAL PASSED (Circuit Court), 1906-33, 1939--. Est. 500 instruments in 10 steel f. d. (1-10).

Original papers of cases tried in criminal division of circuit court, including indictments, bail bonds, summons, pleadings, court orders, judgments with appeal cases including appeal bonds and mandates of the Supreme Court. Arr. chron. by date filed and alph. thereunder by first letter of surname of deft. No index. Hpf. 10 x 5 x 13.

52. CRIMINAL PASSED (Pending), 1929--. 50 instruments in 1 steel f. d.

Original case papers of criminal cases pending in circuit court, showing information as in entry 51. Arr. chron. by date filed and alph. thereunder by first letter of surname of deft. No index. Hpf. 10 x 5 x 13.

Indictments

53. G(rand)Jury PASSED, 1909--. Est 300 instruments in 2 steel f. d. (1, 2).

Original papers of cases in which the grand jury made an investigation but returned no indictment, showing offense charged, name of person investigated, date filed, date dismissed, and signature of clerk. Arr. chron. by date filed. No. index. hpf. 10 x 3 x 13.

54. RECORD OF INDICTMENT, 1883--. 3 vols. (A-C). 1879-82, and incidental recordings, 1883-34, in Bond Record, entry 34. Titles vary slightly.

Recorded copies of true bills of indictment returned by the grand jury and filed with the circuit clerk for recording after apprehension of person charged with violation of law, showing style of case, offense charged, date and place of alleged offense, name of prosecuting attorney, indictment number, signature of grand jury foreman, names of witnesses, date filed, and signature of circuit clerk. Arr. chron. by date of indictment. Indexed alph. by first letter of surname of deft. hpf. Aver. 640 pp. 14 x 11 x 3.

55. FEE BOOK CIRCUIT COURT (Criminal), 1919--. 1 vol.

Record of fees and costs accrued in criminal cases, showing number and style of case, date of court term, names of litigants and witnesses, days served, clerk's, sheriff's, and other officers' costs, and remarks. Arr. chron. by date of court term. Indexed alph. by first letter of surname of deft. hpf. 240 pp. 13 x 12 x 3.

CHANCERY COURT

All records of the chancery court are kept in the county vault unless otherwise specified in the entries.

56. CHANCERY COURT (Disposed of Cases, 1909-39. Est. 1,260 instruments in 14 steel f. d. (labeled) by contained letters of the alph.), 2 steel f. d. (unlabeled), and 26 steel f. d. (labeled by contained case nos. 1893-1908, and incidental filings 1909-37, in Records' Miscellaneous Papers. entry 4.

Original papers of closed cases in chancery court, consisting of petitions, pleadings, witness lists, subpoenas, court orders, and prayer for new

Chancery Court

(57-61)

trial. Each instrument shows names of litigants and attorneys, case number, and date filed. Arr. alph. by first letter of surname of pltf. and numer. thereunder by case no. No index. hpf. 13 x 10 x 5.

57. CHANCERY COURT (Pending Cases). 1939--. 250 instruments in 1 steel f. d. (44-45).

Papers of cases pending in chancery court, showing information as in entry 56. Arr. numer. by case no. No index. hpf. 13 x 10 x 5.

58. CHANCERY DOCKET (Closed Cases), 1922--. 2 bound and 2 loose leaf vols. Titles varies: Equity Docket, 1871-1922.

Minutes of proceedings in cases tried in chancery court, showing number, and style of case, name of litigants and their attorneys, cause of action, date of court term, and court order. Arr. chron. by date filed and numer. thereunder by case no. No index. hpf. Aver. 85 pp. 13 x 9 x 2.

59. CHANCERY DOCKET, (Cases Pending), 1938--. 1 vol.

Minutes of proceedings in cases pending in chancery court, showing same information as entry 58. Arr. chron. by date filed and numer, thereunder by case no. No index. hpf. 50 pp. 13 x 9 x 2.

60. CHANCERY COURT RECORD, 1858--. 6 vols. (1 vol. unlabeled, B&F). Titles vary slightly.

Record of proceedings in chancery court, showing term of court, number and style of case, names of attorneys, date of trial, cause of action, names of witnesses, verdict, court's judgment or penalty, order of custody of person or property, prayer for new trial, motion and pleadings. Arr. chron. by date of court term. Indexed alph. by first letter of surname of pltf. H., 1858-1921; t., 1922--. aver. 640 pp. 16 x 11 x 3.

61. CHANCERY FEE BOOK, 1888--. 3 vols. (1 vol. unlabeled, 1,2), in Fee Book, Circuit Court, (Civil and Criminal), entry 49.

Record of fees due in chancery court, showing number and style of case, date of trial, itemized statement of fees charged, and amount received. Arr. chron. by date filed and numer. thereunder by case no. Indexed alph. by first letter of name of pltf. Aver. 320 pp. 15 x 11 x 3.

PROBATE COURT

All records of the probate court are kept in county vault unless otherwise specified in the entries.

Case Papers

62. PROBATE COURT CASES (Disposed of), 1904--..Est. 550 documents in 11 steel f. d. (labeled by contained letter of the alph.), 1854-1903, and incidental filings, 1904-5, in [Recorders' Miscellaneous Papers], entry 4; incidental filings, 1909-15, in Claims Allowed, entry 1.

Original papers of cases filed in probate court, such as court orders and decrees, motions, pleadings, petitions of executors, administrator, or guardians, disposition of case, notices of sale of property, and final settlements of administrators, executors or guardians showing names of estates, claimants, heirs and attorneys, case number, and date filed. Arr. alph. by first letter of name of estate and chron. by date filed. Hpf. 10 x 5 x 13.

63. PROBATE COURT CASES (Pending Cases), 1922--..50 documents in 1 pasteboard box.

Original papers of cases pending in probate court, showing information as in entry 62. Arr. alph. by first letter of name of estate and chron. thereunder by date filed. No index. Hpf. 4 x 12 x 12.

Wills

64. RECORD OF WILLS (Papers), 1905--.. 160 documents in 1 steel f. d.

Original will filed with the probate court, showing date executed, names of testator and witnesses, acknowledgment of signatures, and date filed. Arr. chron. by date filed. No index. H., 1905-24; h. & t., 1925-27; t., 1928--.. 10 x 5 x 13.

65. WILL RECORD, 1865--.. 2 vols. (A, B). 1845-56 in Deed Record, entry 6. Title varies slightly.

Record of wills, showing information as in entry 64. Arr. chron. by date filed. Indexed alph. by first letter of surname of testator. H. Aver. 700 pp. 18 x 12 x 4.

Bonds and Letters

66. ADMINISTRATION BONDS AND LETTERS, 1859--.. 2 vols. (1 vol. unlabeled, C). 1851 in Probate Court Record, entry 73; and incidental recordings, 1873 and 1908, in Inventories and Appraisements, entry 70.

Record of administrators' and guardians' bonds. Administrator's bonds show name of deceased person, name of administrator, date executed, amount of bond, name of sureties, date of approval, date filed, and date recorded. Guardians' bonds show names, ages, and addresses of wards, name of guardian, date executed, amount of bond, names of sureties, date of approval, date filed, and date recorded. Arr. chron.

Probate Court

(67-70)

by date filed. Indexed alph. by first letter of name of estate. Hpf. Aver. 480 pp. 18 x 12 x 4.

Accounts

67. (ACCOUNTS CURRENT), 1846-1924. 1846-87 in Probate Court Record, entry 73; 1888-1924, and incidental recordings, 1872-87, in Inventories and Appraisements, entry 70.

Record of accounts current submitted by the administrators, guardians, or executors to probate court for approval, showing date of court term, name of estate, name of guardian, administrator or executor, names of minors, annual settlement, showing itemized account of all property, description and valuation, amount of indebtedness against estate, listing all cash, stocks or bonds, oath and signature of administrator, guardian, or executor, signature and confirmation of probate judge, and date recorded.

Claims

68. (CLAIMS AGAINST ESTATES), 1845-89. In Probate Court Record, entry 73.

Record of claims against estates, showing name of claimant, class of claim, whether of first, second, third, or fourth class, according to legal definition, and date filed.

Settlements

69. ANNUAL SETTLEMENTS (Record of), 1848-1924. 1848-88 in Probate Court Record, entry 73; 1889-1924, and incidental recordings, 1872-88, in Inventories and appraisement, entry 70.

Record of annual settlements of executors, administrators, or guardians, showing itemized statement of cash receipts and disbursements, balance due wards or estates, signature of guardian or administrator, confirmation and signature of probate judge, date recorded, and signature of probate clerk.

Inventories, Appraisements, and Sales Bills

70. INVENTORIES AND APPRAISEMENT, 1871--. 3 vols. (1 vol. unlabeled, B, C). 1846-1918 in Probate Court Record, Entry 73. Title varies slightly.

Record of inventories and appraisements. Inventories show name of deceased, value of real and personal property, oath, signature of probate judge. Appraisements show name of deceased, name, qualifications, oaths, and signatures of appraisers, acknowledgment of signatures, description of real and personal property and their values, certificate of appraisers, date filed, date examined and approved by probate judge, and signature of probate judge. Also contains: Incidental recordings of administrators bonds and letters, 1873-1908, entry 66; sales bills, 1889-1925, and incidental recordings, 1871-88, entry 71; accounts current, 1888-1924, and incidental recordings, 1872-87, entry 67; administrators, guardians, and executors settlements, 1889-1924, and incidental recordings, 1872-88, entry 69. Arr. chron. by date filed. Indexed alph. by first letter of name of estate. H. Aver. 620 pp. 18 x 12 x 3.

Probate Court, Juvenile Court - 3/8 -
Justice of the Peace

(71-74)

71. (SALES BILL RECORD), 1846-1925. 1846-88 in Probate Court Record, entry 73; 1889-1925, and incidental recordings, 1871-88, in Inventories and Appraisement, entry 70.

Record of sales of property of estates, showing name of estate, itemized list of property sold and amount received, name of purchaser, and affidavit of administrator as to correctness of list.

Proceedings

72. PROBATE DOCKET, 1873-1911, 1921--. 2 bound and 1 loose leaf vols. (2 vols unlabeled, B). Incidental recordings, 1873, in Circuit Court Docket, entry 42. Titles vary slightly.

Minutes of proceedings in cases tried in probate court, showing case number and title, names of administrator, guardian, and attorneys, date of hearing, court order, and date of order. Arr. chron. by date of court term and roughly numer. by case no. Hpf. Aver. 200 pp. 18x 12 x 3.

73. PROBATE COURT RECORD, 1845--. 5 vols. (1 vol. unlabeled, A-D). Titles vary slightly.

Record of proceedings in probate court, showing number and style of case, names of deceased or ward, guardian, administrator or executor, and attorneys, trial date, findings of court, orders of custody of persons or property, prayer for new trial, motions, petitions, and pleadings. Also contains: Administrators bonds and letters, 1851-57, entry 66; accounts current, 1846-87, entry 67; claims against estates, 1845-89, entry 68; inventories and appraisements, 1846-70, entry 70; sales bills, 1846-88, entry 71, and settlements, 1848, entry 72. Arr. chron. by date of court term. No index, 1845-59; indexed alph. by first letter of name of estate, 1860--. H., 1845-1922; t., 1923--. Aver. 650 pp. 18 x 16 x 4. 1 vol., 1845-59, in bad condition.

74. INSANITY RECORD, 1915--. 1 vol. (dated), 1905-14, and incidental recordings, 1915-21, in County Court Records, entry 3. Titles vary slightly.

Record of findings and decisions of probate court in sanity hearings, showing name of defendant, date of proceedings, name of complaining witnesses and examining physicians, findings of the court, and signature of judge. Arr. chron. by date filed. Indexed alph. by first letter of surname of debt. Hpf. 160 pp. 18 x 12 x 1.

JUVENILE COURT

75. (JUVENILE COURT), 1925-30. In County Court, Record, Entry 3. Record of orders and proceedings in juvenile court, warrants for arrest and commitment of delinquent, receipts from industrial schools for delinquent children received there, petitions from parents to the court to send their delinquent children to industrial schools, and summing up hearings concerning alleged delinquencies of minors.

JUSTICE OF THE PEACE

76. J(ustice) P(eace) DOCKET (Civil and Criminal), 1908--. 9 vols. Minutes of proceedings in justice of peace court in South Fork Township,

1908-39, and Gaston Township, 1913-24, showing style of case, date instituted, names of plaintiff and defendant and their attorneys, cause of action, court judgment, and itemized listing of fees charged. Arr. chron. by date filed. Civil cases indexed alph. by first letter in surname of pltf., criminal cases, by first letter in surname of deft. Hpf. Aver. 320 pp. 18 x 12 x 12. In co. r.

SHERIFF

77. RECORD OF PRISONERS, 1922-36. 1 vol. (1). Discontinued. Register of prisoners confined in county jail showing prisoner's number, name, age, height, color of hair and eyes, complexion, special marks and peculiarities, case history, when received, by what authority confined and discharge, time of sentence, date of discharge, and amount of board due. Arr. chron. by commitment date. No index. Hpf. Aver. 320 pp. 14 x 14 x 1 $\frac{1}{2}$. In co. v.

QUORUM COURT

78. REPORTS OF COUNTY OFFICIALS, 1909-35. 150 instruments in 1 steel f. d. Original reports of county officials to quorum court, showing conditions of office, amount of cash collected, cash expended, cash on hand, source of revenue and purpose of expenditure, dates covered by report, signature of reporting officer, and date filed. Arr. chron. by date filed. No index. H. 10 x 2 x 13. In co. v.

79. (QUORUM COURT PROCEEDINGS), 1880--. In County Court Record, entry 3. Minutes of proceedings of the quorum court, showing date of meeting, names of justices of the peace in attendance, reports of the county judge, clerk, sheriff, and treasurer submitted to the court for approval, county tax levy and appropriations made for salaries of county officers and expenses. Taxes levied for State, and political subdivisions of the county, and adjournment order.

80. (APPROPRIATION RECORD), 1880-1939. In County Court Record, entry 3. Record of appropriation made by the quorum court for each county office and for the general expense of the county, showing date of appropriations, amount appropriated, and names of funds from which appropriations have been made.

COUNTY CLERK

All records of the county clerk are kept in the county vault unless otherwise specified in the entries.

Financial

Accounts

81. OFFICIAL TRANSCRIPT (J. P. REPORTS), 1914-33. 50 instruments

County Clerk

(32-37)

in 1 steel f. d.

Original documents of justice of peace listing fines imposed and names of collecting officers, showing style of case, date of trial, fees collected, and disposition of case, and signature of justice. Arr. chron. by date filed. No index. H. 13 x 10 x 3.

82. CLERKS FEES AND COUNTY TAX, 1931--. 1 vol. (1).

Record of county clerk's fees collected for services rendered, showing names of person paying fee, service for which fee was made, and date and amount of payment. Arr. chron. by date filed. No index. Hpf. 480 pp. 15 x 12 x 2.

Audits

83. COMPTROLLERS REPORT (Audit of Montgomery County), 1930--.
7 vols.

Reports of county officers, containing letters of transmittal, statement of condition of records and accounts of county officials, and transcript of audit. Arr. chron. by date filed. No index. T. Aver. 50 pp. 18 x 10 x $\frac{1}{2}$.

Warrants

84. REGISTER OF COUNTY WARRANTS, 1906--. 3 vols. (1 vol. unlabeled, 16, 5). 1857 in County Court Record, entry 3.

Numerical register of warrants issued by the county in payment of claims against the county general funds, showing warrant number, date issued, name of payee, name of account on which warrant is drawn, amount of warrant, date delivered, to whom delivered, and date canceled. Arr. numer. by warrant no. No index. Hpf. Aver. 321 pp. 15 x 11 x 3.

85. RECISTER OF PAID SCHOOL WARRANTS, 1900-1903, 1908-36. 6 vols. (1, 1-3, 2 vols. unlabeled). Title varies.

Record of school warrants, showing warrant number, name of person to whom issued amount, on what fund drawn, date, and signature of member of board issuing warrant. Arr. numer. by school dist. no. and chron. thereunder by date paid. No index. Hpf. Aver. 239 pp. 13 x 19 x 3.

Settlements

86. SHERIFF AND COLLECTORS SETTLEMENTS, 1894-1933. 3 vols. (A, 1 vol. unlabeled, 1 vol. dated).

Record of collectors settlements, showing name, amount and source of collections made, period covered by settlement, and disposition of moneys collected. Arr. chron. by date of settlement. No index. Hpf. Aver. 480 pp. 16 x 11 x 2.

87. TREASURERS SETTLEMENTS, 1894-1929. 5 vols. (A-D, 1 vol. unlabeled)

Record of treasurer's settlements, showing information as in entry 86. Arr. chron. by date of entry. No index. Hpf. Aver. 480 pp. 15 x 10 $\frac{1}{2}$ x 2.

County Clerk

(88-94)

Assessment and Taxation

88. RECORD (Homestead), 1890-1907. 1 vol.

Record of all claim entries, made at the U. S. Land office, for land given by the government with specified requirements, showing date of entry, name of owner, legal description of property, and remarks. Arr. chron. by date filed. No index. H. Aver. 444 pp. 14 x 8 x 1 $\frac{1}{2}$.

89. REAL ESTATE ASSESSMENTS, 1869, 1872, 1877, 1880, 1887-1888, 1893--. 30 vols. (1 vol. unlabeled, 29 vols. dated).

Record of real estate assessments made by assessor on all real property, showing name of owner, legal description of property, assessed valuation, numbers of road and school districts in which property is located. Arr. numer. by sec., twp., and r. No index. Hph. Aver. 400 pp. 18 x 12 x 2.

90. REAL ESTATE TAX BOOK, 1869--. 68 vols. (1 vol. unlabeled, 67 vols. dated). Titles vary slightly.

Tax rolls for real estate, showing name of owner, legal description of property, numbers of school and road districts, rate of school taxes extended, State, county, district and city taxes, total tax, and amount of taxes delinquent. Arr. numer. No index. Hpf. Aver. 365 pp. 18 x 12 x 4.

91. PERSONAL ASSESSMENT, 1873, 1876-78, 1885-88, 1896-97, 1899, 1902, 1904-16. (5 vols. unlabeled, 25 vols. dated).

Record of assessments of personal property, showing name of owner, those persons required to pay poll tax, number and value of livestock, stocks and bonds, moneys invested, total assessed value of all property, total value as equalized, numbers of road and school districts. Arr. numer. by school dist. no. and alph. thereunder by first letter of surname of tax payer. No index Hpf. Aver. 160 pp. 18 x 12 x 1 $\frac{1}{2}$.

92. PERSONAL TAX BOOK, 1865-78, 1887-83, 1887-88, 1890, 1894-95, 1898, 1903-16. 33 vols. (1 unlabeled, 23 vols. dated).

Tax rolls of personal property showing numbers of receipt book and receipt, name and address of property owner, date taxes paid, description of personal property, valuation of various items of personal property, total valuation, penalty assessed for delinquency, if any, valuation of equalized, numbers of school and road districts, State, county, general school, and total taxes. Arr. numer. by school dist. no. and alph. by name of taxpayer. No index. Hpf. Aver. 119 pp. 15 x 14 x 1 $\frac{1}{2}$.

93. PERSONAL ASSESSMENT TAX BOOK, 1917--. 24 vols. (dated).

Record of personal property assessment and tax rolls, showing information as in entries 91 and 92. Arr. numer. by school dist. no. and alph. by name of tax payer. No index. Hpf. Aver. 119 pp. 15 x 14 x 1 $\frac{1}{2}$.

94. (Abstract of the) TAX BOOKS, 1901--. 300 instruments in 1 steel f. d.

Original listings of real and personal property to be used by the assessor in preparation of the assessment record, showing name of property owner, legal description of property, if real estate, separate listing of property, and certificate of county clerk. Arr. chron. by date filed. No index. H pf. 10 x 5 x 13.

Collections

95. RECORD OF TAX RECEIPTS, 1884-86, 1888-90, 1893--. 53 vols. 10 vols. unlabeled, 43 vols. dated).

Record of tax receipts, showing name of collector, year for which taxes were paid, receipt number, to whom issued, legal description of property, valuation of real and personal property, total value of real and personal property, school, levee, bridge, and drainage district taxes, total taxes, and date paid. Arr. numer. by receipt/no. No index. Hpf. Aver. 738 pp. 14 x 10 x 3 $\frac{1}{2}$.

Tax Sales

96. LIST AND NOTICE OF SALE OF LANDS DELINQUENT, 1888--. Last entry, 1938. 4 vols. (1-4).

Records listing all lands subject to sale for collection of delinquent taxes showing name of owner, legal description of property, valuation, years for which taxes are delinquent, total taxes, penalties and costs due, date sold, and name of purchaser. Also contains: Delinquent land sold to state, 1884-1904, entry 98. Arr. numer. by sec., twp., and r. No index. Hpf. Aver. 404 pp. 14 x 11 x 1 $\frac{1}{2}$.

97. (LIST OF DELINQUENT LANDS SOLD TO INDIVIDUALS), 1888-1907. In List and Notices of Delinquent Lands, entry 96.

Record of lands on which payments have become delinquent, and which have been sold to individuals, showing years for which tax payments are delinquent, area and legal description of tract, amount of taxes, penalties and costs due, and to whom sold.

98. DELINQUENT LANDS SOLD TO STATE, 1923--. 2 vols. (1,2). 1884-1904 in List and Notice of Sale of Lands Delinquent, entry 96.

Record of lands sold to the state for non-payment of taxes, showing the amount of taxes delinquent, plus penalties and costs, years for which taxes are delinquent, area and legal description of tract, taxes, penalties and costs due. Arr. numer. by twp., sec., and r. No index. Hpf. Aver. 161 pp. 14 x 14 x 1 $\frac{1}{2}$.

Redemptions

99. (LAND REDEMPTION CERTIFICATES), 1881-1937. in [Recorder's Miscellaneous Papers] entry 4.

Original redemption certificates issued to persons redeeming land sold for taxes, showing name of person redeeming lands, date of redemption, description of property, date of sale, amount of taxes, penalties and costs, distribution of taxes, treasurer's receipt attached to and forming a part of the redemption certificate, showing amount received, purpose for which money was paid, date of receipt, and signature of treasurer.

100. RECORD OF REDEEMED LANDS, 1920--. 2 bound and 1 loose leaf vols. (A, 1, 2).

Record of lands sold for payment of delinquent ad valorem taxes and subsequently redeemed, showing date redeemed, legal description of property, amount of taxes and penalties, and name of person redeeming property. Arr. chron. by date filed. No index. Hpf. Aver 200 sheets. 12 x 13 x 2.

Vital Statistics

101. VITAL STATISTICS (Record of Births), 1914-22. 90 documents in 1 steel f. d.

Original birth certificates, showing date and place of birth, registration number, name of child, names, address and ages of parents, signature of attending physician, and date filed. Arr. chron. by birth date and alph. thereunder by first letter of family name. No index. Hpf. 10 x 5 x 13.

Marriages

102. ORDER FOR MARRIAGE LICENSE, 1933--. 125 instruments in 1 steel f. d.

Order to county clerk from parents of minor giving their consent for issuance of marriage license. Order shows date executed, name and age of minor, and signatures of parents. Arr. chron. by date filed. No index. H. 13 x 10 x 3.

103. MARRIAGE RECORD (RECORD OF MARRIAGE), 1845--. 11 vols. (A-K). Incidental recordings, 1845-49, in Dood Record, entry 6; incidental recordings, 1881, in Mortgage Record, entry 15. Titles vary slightly.

A record of marriages consisting of marriage bond, affidavit for license application, license, and certificate of marriage. Marriage bond shows name of principal and surety, date of bond, names of contracting parties, and signatures of the principal and bondsman. Affidavit for license application shows name of person applying for license, his age, and address, name, age, and address of woman he intends to marry, date of affidavit, and signature of county clerk. Marriage license shows names, addresses, and ages of contracting parties, date of license, and seal of county clerk. Certificate of marriage gives name of person performing ceremony, date of ceremony, date certificate signed, copy of signature of person performing ceremony, and book and page of record in which his credentials are recorded. Also contains: Incidental recordings of ministers credentials; 1852-1927, entry 35; incidental recordings of public millers license 1876, entry 38. Arr. chron. by date filed. Indexed alph. by first letter of surname of groom. H., 1845-92; h. and hpf., 1893-1927; hpf., 1928--. Aver. 640 pp. 16 x 12 x 3.

Corporations

104. CORPORATION (Annual Reports), 1905-21. 50 instruments in 1 steel f. d.

Original annual reports made by corporations to county clerk, showing amount of paid up capital stock, cash value of assets, total liabilities, name of corporation, report date, signatures of corporation officials, acknowledgment, and date filed. Arr. chron. by date filed. No index. Hpf. 13 x 10 x 3.

105. INCORPORATION RECORD, 1904--. 1 vol. A.

Record of incorporation papers, showing name of corporation, name of persons subscribing stock, number of shares held by each, value, amount subscribed, place of business, capital stock, amendments to articles and by-laws, date filed, and date recorded. Arr. chron. by date filed. Indexed alph. by first letter of name of corporation. H. 480 pp. 15 x 12 x 2.

Professional Licenses

106. REGISTER OF PHYSICIANS AND SURGEONS, 1881-1935. 1 vol. (A). Record of physicians' and surgeons' certificates, 1881--, and re-registration of licenses as required by an act of the General Assembly of 1903, and subsequent registration of professional licenses, such as optometrists' licenses, 1917-18; dentists' licenses, 1902-16; nurses licenses, 1934-35; pharmacists' licenses, 1913-17. Record of professional licenses shows title of examining board, date of examination, name of licensee, date license issued, copy of signature of official of examining board, date filed, and date recorded. Record of re-registration shows name of examining board, physician's name, statement of qualifications, date executed, names of officers of examining board, and date recorded. Arr. chron. by date filed. Indexed alph. by first letter of surname of licensee. Hpf. 80 pp. 14 x 8 x 2.

107. ESTRAY, 1908--. 50 instruments in 1 steel f. d. Original instruments pertaining to the impounding of stray livestock by individuals, and reported by justices of the peace to the county clerk, showing description of animal, impounded, name of person in possession of stock, name of justice of the peace, names of appraisers appointed to determine value of impounded stock, appraised value, total expense incurred, and date filed. Arr. chron. by date filed. No index. H. 13 x 5 x 16.

108. RECORD OF ESTRAYS, 1868--. Last entry 1933. 1 vol. 1845-49 in Deed Record, entry 6. Record of stray livestock taken up by individual, showing name of justice of the peace, names of group of three appraisers appointed by justice of the peace to determine the value of animal, appraised value, total expense, description of animal, when, where, and by whom animal was taken up, and whether claimed by owner. Arr. chron. by date filed. No index. H. Aver. 480 pp. 13 x 12 x 2.

109. RECORD OF MARKS AND BRANDS, 1867--. 1 vol. B. 1847-48 in Deed Record, entry 6. Illustrated description and record of marks and brands of livestock to identify ownership, specifying the earmark and place upon the body where brand is applied, showing name and place of residence of owner, township, date recorded, and signature of county clerk. Arr. chron. by date recorded. Indexed alph. by first letter of surname of owner. 480 pp. 16 x 12 x 3.

Pistols

110. PISTOL REGISTER, 1923-34. 1 vol. (1). Record of registration of pistols, showing name of manufacturer, serial number, name, age and residence of owner, white or colored, school district number, kind of pistol, caliber, permit number, date and expiration of permit, and date recorded. Arr. chron. by date filed. No index. Hpf. 200 pp. 16 x 12 x 2.

School Lands

111. 16th SECTION LANDS, 1887-1920. 50 instruments in 1 steel f. d.

County Clerk, Equalization Board
Treasurer

(112-117)

Original documents of sale of 16th section school lands, showing date of sale, to whom sold, legal description of property, cost of sale, and consideration. Arr. chron. by date filed. No index. H. 10 x 3 x 13.

Roads

112. REGISTER OF ROAD DISTRICT, 1887-1932. 1 vol.

Register of road districts, showing number of district, date, name of overseer, date appointed, date appointment expires, number of hands worked, name of apportioning justice and boundary of district. Arr. numer. by dist. no. No index. Hpf. 640 pp. 14 x 10 $\frac{1}{2}$ x 2.

Appointments

113. (APPOINTMENT OF DEPUTIES), 1933. In Recorded Deeds, entry 5. Original appointment of deputies, showing name of deputy, date appointed, names of appointing officer, and office to which appointed, oath and signature of appointed deputy, approval of county judge, acknowledgment, and signature of county judge and county clerk.

114. (APPOINTMENT OF DEPUTY CLERK), 1876-1890. In Bond Record, entry 34.

Record of appointment of deputies, showing information as in entry 113.

115. PRODUCERS REPORT, 1929--. 250 documents in 1 steel f. d.

Original reports of oil, gas, coal and timber registered by producers, showing permit number, kind of resources, quantity sold, values, and attestation and signature of deponent. Arr. chron. by date filed. No index. H. 10 x 5 x 13.

EQUALIZATION BOARD

116. EQUALIZATION BOARD RECORD, 1929-1937. 1 vol. (1) - 1869-1928, incidental recordings, 1928-1935 in County Court Record, entry 3.

Record of abstract of proceedings of the equalization board, showing names of taxpayers, their addresses, description of property, assessed, valuation set by assessor, valuation as equalized by board, and date equalized. Arr. numer. by sec., twp., and r. Tpf. 600 pp. 15 x 11 x 2. In co. v.

TREASURER

All records of the county treasurer are found in his office unless otherwise specified in the entries.

117. (COUNTY GENERAL FUND), 1928--. 1 loose leaf vol. (D).

Record of treasurer's general account with various county officers, showing subdivisions of funds, amount received, amounts disbursed, persons to whom paid, purpose for which paid, balance in various funds. Arr. alph. by acct. and chron. thereunder by date entered. No index. Hpf. 300 pp. 18 x 12 x 2 $\frac{1}{2}$.

118. SCHOOL WARRANT REGISTER, 1933--. 1 loose leaf vol.
Register of school warrants, showing number, date, and amount of
warrant, date presented, register number, by whom drawn, on what fund,
in whose favor, purpose, to whom paid, and date paid. Arr. numer. by
school dist. no. No index. Hpf. 300 pp. 16 x 14 x 2.

Prima

BIBLIOGRAPHY

Primary Sources

I. Documentary

Acts of the General Assembly of the State of Arkansas, 1836--

Arkansas, Bureau of Mines, Manufactures, and Agriculture, Nineteenth Biennial Report from the Bureau of Mines, Manufactures, and Agriculture of the State of Arkansas for the Years 1929 and 1930, (Little Rock, 1930)

Arkansas Corporation Commission, Biennial Report to Gov. Carl Bailey for the Calendar Years 1939 and 1940, (Little Rock, 1941)

Arkansas Forestry Commission, Wooden Riches, Arkansas Forest Facts, Bulletin No. 10, (Little Rock, 1936)

Arkansas Geological Survey, Elevations in Arkansas, 9 vols., (Little Rock, 1936)

Arkansas Geological Survey, Information Circular 9, Mineral Production Statistics of Arkansas for the period of 1880-1935, (Little Rock, 1936)

Arkansas Historical Records Survey Project, WPA, Church Directory of Montgomery County, (Ms. in files of Historical Records Survey, Little Rock, 1941)

Arkansas, Secretary of State, Civil Record, 1836-64, (Handwritten volumes in office of Secretary of State, Little Rock)

Arkansas State Board of Education and the State Commissioner of Education, Biennial Report of the State Board of Education and the State Commissioner of Education, 1938-1940, (Little Rock, 1940)

Arkansas State Comptroller, Biennial Report of the State Comptroller, Covering Fiscal Years 1938-39 and 1939-40, (Little Rock, 1940)

Arkansas State Highway Commission, Fourteenth Biennial Report of the Arkansas State Highway Commission, 1939-1940, (Conway, Ark., 1940)

Arkansas State Highway Commission, Twelfth Biennial Report of the Arkansas State Highway Commission, 1935-1936, (Little Rock, 1936)

Arkansas State Planning Board, Arkansas Water Resources, (Little Rock, 1939)

Bibliography

U. S. Bureau of the Census, United States Census of Agriculture: 1935, Arkansas, Statistics by Counties, Second Series, (Washington, 1936)

U. S. Department of Agriculture, Arkansas Agricultural Experiment Station, Arkansas Cotton, Estimated Acreage, Yield, and Production, 1928-1939, (Little Rock, 1940)

U. S. Department of Agriculture, Forest Service, Forest Resources of the Ouachita Mountain Region of Arkansas, A Progress Report by the Southern Forest Survey, I. F. Eldredge, Regional Survey Director, Forest Survey Release No. 36, (New Orleans, 1938)

U. S. Department of Agriculture, Forest Service, Southern Region, Ouachita National Forest, Arkansas-Oklahoma, (Washington, 1937)

U. S. Department of Agriculture, Weather Bureau, Climatic Summary of the United States, Sec. 80, (Washington, 1933)

U. S. Secretary of War, The War of the Rebellion, A Compilation of the Official Records of the Union and Confederate Armies, Series I, XXII, Part II, Correspondence, (Washington, 1888)

II. Maps

Arkansas Geological Survey, Topographic Map of the State of Arkansas, (Little Rock, 1930)

Arkansas State Highway Commission, Map of the State Highway System of Arkansas, 1941, (Little Rock, 1941)

Tanner, H. S., A New Map of Arkansas with its Canals, Roads, and Distances, 1841, (Philadelphia, 1841)

III. Newspapers

Hot Springs, (Ark.) Hot Springs New Era

Little Rock, (Ark.) Arkansas Democrat

Little Rock, (Ark.) Arkansas Gazette

Mount Ida, (Ark.) Montgomery County Herald

Secondary Works

Allsopp, Fred W., Albert Pike, A Biography, (Little Rock, Parke-Harper Company, 1928)

Bibliography

- U. S. Bureau of the Census, Religious Bodies, 1926. (Washington, 1930)
- U. S. Bureau of the Census, Report on Statistics of Churches in the United States at the Eleventh Census: 1890, (Washington, 1894)
- U. S. Bureau of the Census, Seventh Census of the United States: 1850, Embracing a Statistical View of Each of the States and Territories Arranged by Counties, Towns, (Washington, 1853)
- U. S. Bureau of the Census, Seventh Census of the United States, 1850, Statistics of the United States, (Washington, 1852)
- U. S. Bureau of the Census, Sixteenth Census of the United States, 1940, Agriculture, Arkansas, First Series (Washington, 1941)
- U. S. Bureau of the Census, Sixteenth Census of the United States: 1940, Census of Manufactures: 1939, State Summary, Arkansas, (Washington, 1941)
- U. S. Bureau of the Census, Sixteenth Census of the United States, 1940, Population, First Series, Number of Inhabitants, Arkansas, (Washington, 1941)
- U. S. Bureau of the Census, Special Reports of the Census Office, Wealth, Debt, and Taxation, (Washington, 1907)
- U. S. Bureau of the Census, Statistics of the United States, (Including Mortality, Property, etc.) in 1860, compiled from the Original Returns and Being the Final Exhibit of the Eighth Census, (Washington, 1866)
- U. S. Bureau of the Census, Twelfth Census of the United States, Taken in the Year 1900, Agriculture, VI, Part II, (Washington, 1902)
- U. S. Bureau of the Census, Twelfth Census of the United States, Taken in the Year 1900, Manufactures, IX, Part III, (Washington, 1902)
- U. S. Bureau of the Census, Twelfth Census of the United States, Taken in the Year, 1900, Population, I, Part I, (Washington, 1901)

Bibliography

Arkansas State Revenue Department, Arkansas State Severance Tax Report, 1940, in files of State Revenue Department

Arkansas, State Superintendent of Public Instruction, Sixteenth Biennial Report of the State Superintendent of Public Instruction of the State of Arkansas, for the Years 1899 and 1900, (Little Rock, 1900)

Arkansas Writers' Project, WPA, Arkansas: A Guide to the State, (New York, Hastings House, 1941)

Journals of the House of Representatives of the State of Arkansas, 1836--

Journals of the Senate of the General Assembly of the State of Arkansas, 1836--

Missouri Pacific Railroad Company, Traffic Department, Missouri Pacific Railroad Company, Gulf Coast Lines, International-Great Northern Railroad Company, The Texas and Pacific Railroad Company, briefed from a report entitled The Missouri Pacific Railroad Company issued in Oct. 1935, by the Reconstruction Finance Corporation, Railroad Division, (St. Louis, Mo., 1936)

United States De Soto Expedition Commission, Final Report of the United States De Soto Expedition, (Washington, 1939)

U. S. Bureau of the Census, Manufactures of the United States in 1860, Compiled from the original Returns of the Eighth Census, (Washington, 1865)

U. S. Bureau of the Census, Ninth Census, Volume I, The Statistics of the Population of the United States, Embracing the tables of Race, Nationality, Sex, Selected Ages and Occupation, Compiled from the Original Returns of the Ninth Census, (June 1, 1870), (Washington, 1872)

Bibliography

- Allsopp, Fred W., History of the Arkansas Press for one hundred Years and More, (Little Rock, Parke-Harper Publishing Company, 1922)
- Arkansas Press Association, Advertising Rate and Data Book of Arkansas Newspapers, Ninth Edition, 1940, (Fayetteville, Ark., Arkansas Press Association, 1940)
- Cubage, Mrs. Malinda Ann, Caddo Gap, Arkansas, interviewed by Evelyn Vaught Chapman, transcript of interview in files of Arkansas Historical Records Survey Project, Little Rock.
- Jones, Mrs. Julia Ann, Norman, Arkansas, interviewed by James H. Richards, Dec. 23, 1940, transcript of interview in files of Arkansas Historical Records Survey Project, Little Rock.
- Thomas, David Y., Arkansas and Its People, 4 vols., (New York, American Historical Society, Inc., 1930)
- Vaught, A. P., Caddo Gap, Arkansas, interviewed by Evelyn Vaught Chapman, transcript of interview in files of Arkansas Historical Records Survey Project, Little Rock.
- Whittington, W. G., "Mount Ida from 1836 to 1910" in Montgomery County Herald, Centennial Edition, June 11, 1936.

Ge
Je
Jo
Ja
Ch
Da
Ja
Ja
Da
G.

Jo
Wi
Ge
Jo
Sh
Th
Ab
Sh
Le
C.
He
A.

LIST OF COUNTY OFFICIALS

CIRCUIT CLERKS

| | |
|---------------------------------|-----------------------------|
| George Fisher, 1844-1846 | Zora L. Cotton, 1868-1873 |
| Jesse McLendon, 1846-1847 | George W. Gray, 1873-1874 |
| John Cook, 1847-1848 (1) | G. D. Goodman, 1874-1890 |
| James Fleming, 1848-1852 | J. S. Nelson, 1890-1896 |
| Charles L. Hughes, 1852-1853 | J. S. Autrey, 1896-1898 (5) |
| David A. Woolard, 1853-1860 (2) | J. S. Nelson, 1898-1904 |
| James A. Stall, 1860-1864 | G. H. Speer, Jr., 1904-1914 |
| James J. Laird, 1864-1866 (3) | John M. Smith, 1914-1919 |
| David S. Campbell, 1866-1867 | George Watkins, 1919-1933 |
| G. D. Goodman, 1867-1868 (4) | Amos Horn, 1933-- |

- (1) vice McLendon, resigned
- (2) vice Hughes, resigned
- (3) vice Stall, deceased
- (4) vice Campbell, resigned
- (5) Autrey or Nelson?

CIRCUIT JUDGES

(5th Judicial Circuit, 1845-1846;
6th Judicial Circuit, 1846-1861;
9th Judicial Circuit, 1861-1868;
8th Judicial Circuit, 1868-1873;
15th Judicial Circuit, 1873-1874;
8th Judicial Circuit, 1874-1891;
9th Judicial Circuit, 1891-1911;
18th Judicial Circuit, 1911-1913;
9th Judicial Circuit, 1913-1915;
18th Judicial Circuit, 1915--)

| | |
|-------------------------------|---------------------------------|
| John J. Clendenin, 1845-1846 | E. J. Searle, 1868-1871 (5) |
| William H. Field, 1846 (1) | T. G. T. Steele, 1871-1873 |
| George Conway, 1846-1849 | Leroy D. Beldin, 1873-1874 |
| John Quillin, 1849-1852 | L. J. Joyner, 1874-1878 |
| Shelton Watson, 1852-1854 | N. B. Stuart, 1878-1886 |
| Thomas Hubbard, 1854-1856 | Rufus D. Hearn, 1886-1891 |
| Abner A. Stith, 1856 (2) | W. P. Feazel, 1891-1902 |
| Shelton Watson, 1856-1858 (3) | James S. Steele, 1902-1910 |
| Len B. Green, 1858-1861 (4) | Jefferson T. Cowling, 1910-1912 |
| C. B. Stuart, 1861-1862 | C. W. Cotham, 1912-1913 |
| Henry B. Stuart, 1862-1866 | J. T. Cowling, 1914-1915 |
| A. N. Hargrove, 1866-1867 | Scott Wood, 1915-1923 |
| Earl Witt, 1923-- | |

- (1) vice Clendenin, resigned
- (2) vice Hubbard, resigned
- (3) vice Stith, deceased
- (4) vice Watson, deceased
- (5) vice Hargrove, impeached

List of County Officials

PROSECUTING ATTORNEYS

George C. Watkins, 1845-1846
Allen W. Blevins, 1846-1851
Edward A. Warren, 1851-1853
Orville Jennings, 1853-1854
Edward W. Gantt, 1854-1860
James K. Young, 1860-1861
William D. Jacoway, 1861-1862
A. T. Craycroft, 1862-1866
Benjamin C. Parker, 1866-1868
Joseph R. Pratt, 1868-1871
George A. Kingston, 1871-1872
Duane Thompson, 1872-1873
George G. Latta, 1873-1874
John W. McCabe, 1874-1878
Rufus D. Hearn, 1878-1884
W. M. Green, 1884-1890
James D. Shaver, 1890-1891

James H. McCollum, 1891-1892
James D. Shaver, 1892-1894
H. L. Norwood, 1894-1898
James S. Steele, 1898-1902
J. I. Alley, 1902-1904
J. S. Lake, 1904-1908
J. C. Pinnix, 1908-1911
Gibson Witt, 1912-1914
Abe Collins, 1914-1915
Gibson Witt, 1915-1916
G. H. Speer, 1916-1919
John D. Haskins, 1919-1923
G. P. Bumpass, 1923-1925
William G. Bouie, 1925-1931
Houston Emory, 1931-1937
Gibson Witt, Jr., 1937-1941
Curtis L. Ridgeway, 1941--

STATE SENATORS

S. W. Reyburn, 1846-1850
James H. Crow, 1850-1852
M. Boseman, 1852-1854
William F. S. Barkman, 1854-1856
W. H. Hammond, 1856-1860
James F. Fagan, 1860-1861
Davidson Cunningham, 1861-1862
Finnis Leech, 1862-1864
E. H. Vance, 1864-1865
Joseph Tucker, 1865-1866 (1)
J. M. Smith, 1866-1868
D. P. Beldin, 1868-1874
O. D. East, 1874-1879
C. A. Gantt, 1879-1883

Jesse A. Ross, 1883-1885
G. W. Baxter, 1885-1889
J. J. Sumpter, 1889-1893
Gibson Witt, 1893-1897
J. D. Kimball, 1897-1901
Gibson Witt, 1901-1905
Thomas W. Milam, 1905-1909
O. H. Sumpter, 1909-1911
Hamp Williams, 1911-1913
J. N. Wasson, 1913-1917
Houston Emory, 1917-1925
G. D. Dillard, 1925-1929
Granville Jones, 1929-1931
Walter L. Whitley, 1931-1939 (2)

James H. Pilkington, 1939--

(1) vice Vance, resigned

(2) vice Jones, deceased

CHANCERY JUDGES

(3rd Chancery Circuit, 1893--)

Leland Loatherman, 1893-1904
Alphonso Curl, 1904-1910

Jethro P. Henderson, 1910-1924
William R. Duffie, 1924-1932 (1)

Sam W. Garratt, 1932--

(1) vice Henderson, deceased

(2) vice Duffie, deceased

List of County Officials

STATE REPRESENTATIVES

Granville Whittington, 1846-1848
James Hudson, 1848-1850
Hiram A. Whittington, 1850-1852
R. S. McFarlane, 1852-1854
W. Stringfellow, 1854-1856
Henry Heffington, 1856-1860
B. A. Woodlard, 1860-1862
C. G. Hurt, 1862-1864
J. C. Priddy, 1864-1866
G. K. Robinson, 1866
James H. West, 1866-1868
John W. Harrison, 1868-1871
J. H. Demby, 1868-1871
Charles R. Kymes, 1871-1873
Peter B. Allen, 1871-1873
Nathan Ellington, 1871-1873
John F. Lane, 1871-1873
John J. Sumpter, 1871-1874
L. D. Galbreath, 1873-1874
George G. Latta, 1873-1874
H. H. Barton, 1874
Alfred Jones, 1874-1877

William R. Cubage, 1877-1879
J. H. Demby, 1879-1881
A. C. King, 1881-1883
John A. Watkins, 1883-1885
William P. Birch, 1885-1887
W. H. Harley, 1887-1889
Gibson Witt, 1889-1893
W. O. Diffie, 1893-1895
Joseph W. Shaw, 1895-1899
George H. Spear, 1899-1901
James N. Wasson, 1901-1903
Robert M. Reece, 1903-1907
Jerry Witt, 1907-1911
C. T. Cockburn, 1911-1915
Monroe M. Flemmons, 1915-1919
J. B. Kelly, 1919-1921
C. H. Herndon, 1921-1925
John H. Freeman, 1925-1927
Osro Cobb, 1927-1931
Harold Watkins, 1931-1935
Fred Jones, 1935-1941
Paul Hulsey, 1941--

SHERIFFS

N. F. Robinson, 1844-1846
James Hudson, 1846-1848
James H. May, 1848-1854
John B. Garrett, 1854-1860
W. C. Simpson, 1860-1866
John L. Martin, 1866-1867
Ely R. Barrow, 1867 (1)
William Sutton, 1867-1868 (2)
William Reeves, 1868-1872
George H. Speers, 1872-1874
James B. Fulton, 1874-1876
Henry S. Goodner, 1876-1882
G. W. Golden, 1882-1890

Givens Peden, 1890 (3)
James N. Wasson, 1890-1898
W. D. Sandlin, 1898-1902
T. M. Scott, 1902-1906
J. R. Howell, 1906-1912
W. J. Ellington, 1912-1916
O. M. Radford, 1916-1919
G. A. Jackson, 1919-1921 (4)
W. N. Crump, 1921-1925
George Jackson, 1925-1929
Frank Hale, 1929-1935
J. M. Glaze, 1935-1939
John Johnson, 1939--

(1) vice Martin, resigned
(2) vice Barrow, deceased

(3) vice Golden, deceased
(4) vice Radford, resigned

HOME DEMONSTRATION AGENTS

Anna C. Woods, 1915-1917
Odessa Holt, 1917-1919

Etna McGaugh, 1929
Eloise Stanford, 1934-1935

Ola M. Walton, 1935--

List of County Officials

COUNTY TREASURERS

John M. Fleming, 1844-1846
 Jackson Collier, 1846-1848
 David Farr, 1848-1849
 James W. Bledsoe, 1849-1850
 James A. Stall, 1850-1856
 James F. Fleming, 1856-1860
 Alfred Jones, 1860-1868
 Charles R. Kimes, 1868-1870
 H. H. Williams, 1870-1872 (1)
 W. W. Sanders, 1872-1874
 William M. Williams, 1874-1875
 O. H. Overstreet, 1875-1878 (2)
 J. A. Watkins, 1878-1882

J. M. Anderson, 1882-1884
 S. M. Smith, 1884-1894
 D. C. Evans, 1894-1900
 John R. Howell, 1900-1904
 J. W. Wacastor, 1904-1908
 W. A. Brakefield, 1908-1912
 O. N. Radford, 1912-1916
 W. D. Freeman, 1916-1923
 M. Elder, 1923-1927
 Edgar Black, 1927-1931
 M. Elder, 1931-1935
 Joe Simpson, 1935-1939
 George Irons, 1939--

(1) vice Kimes, resigned

(2) vice Williams, resigned

COUNTY JUDGES

Andrew Boles, 1845
 I. K. Robinson, 1845-1846 (1)
 John S. Harris, 1846-1847 (2)
 Harrison Graves, 1847-1849
 Martin Monday, 1849
 John Cook, 1849-1850 (3)
 William H. Graves, 1850-1851 (4)
 James B. Garrett, 1851-1853
 Andrew Boles, 1853-1855 (5)
 Fielding Strawn, 1855 (6)
 John Cook, 1855-1856 (7)
 Thomas Farr, 1856 (8)
 Willis S. Smith, 1856-1857 (9)
 W. T. Willoughby, 1857-1862
 John A. Freeman, 1862-1864
 Granville Whittington, 1864 (10)
 N. W. Cabler, 1864-1866
 Charles A. Kymes, 1866-1867
 N. W. Cabler, 1867-1868 (11)
 George W. Beard, 1868 (12)
 Morgan Ussery, 1868-?
 James H. West, 1874-1878

J. B. Fulton, 1878-1884
 A. S. Logan, 1884-1886
 S. P. Vaught, 1886-1890
 William O. Diffie, 1890-1892
 S. P. Vaught, 1892-1894
 Silas Hatmaker, 1894-1896
 S. P. Vaught, 1896-1898
 R. H. Buttram, 1898-1902
 J. L. Autrey, 1902-1904
 J. M. Bradley, 1904-1906
 Louis N. Burnett, 1906 (12)
 J. S. Nelson, 1906-1908
 L. L. Beavers, 1908 (13)
 J. W. Shephard, 1908-1910
 A. S. Logan, 1910-1914
 J. B. Kelly, 1914-1919
 Arthur Standridge, 1919-1923
 W. J. Ellington, 1923-1927
 Walter Hitchcock, 1927-1931
 J. B. Hughes, 1931-1935
 Joe H. Demby, 1935-1937
 Frank Hale, 1937-1939

J. H. Shaw, 1939--

(1) vice Boles, resigned
 (2) vice Robinson, deceased
 (3) vice Monday, resigned
 (4) vice Cook, disqualified
 (5) vice Garrett, deceased
 (6) vice Boles, resigned

(7) vice Strawn, disqualified
 (8) vice Cook, moved from State
 (9) vice Farr, disqualified
 (10) vice Freeman, moved from State
 (11) vice Kymes, resigned

(12) vice Bradley, resigned
 (13) vice Nelson, resigned

List of County Officials

CORONERS

Alexander Lankford, 1844-1846
Samuel Cunningham, 1846-1848
John McKinley, 1848-1850
D. W. Stockton, 1850-1852
Valentine Icinhour, 1852-1857
Jeremiah Earnest, 1857-1858 (1)
J. M. Amerson, 1858-1860
M. Isenhower, 1860-1862
William Smith, 1862-1864
J. Standridge, 1864-1868
Sterling Coffman, 1868-1871
C. W. Clearley, 1871-1873 (2)
Samuel Standridge, 1873
Samuel Smith, 1873-1874
H. L. Autrey, 1874-1876
O. C. Rowton, 1876-1878
J. A. Coffman, 1878-1880

(1) vice Icinhour, failed to
make bond

W. J. Hay, 1880-1884
Joseph Shirley, 1884-1886
C. H. Green, 1886-1888
Frank Gross, 1888-1890
John R. Bates, 1890-1892
N. B. Riffe, 1892-1896
H. Hart, 1896-1898
J. J. Swindle, 1898-1900
C. J. Watkins, 1900-1902
W. H. Taylor, 1902-1904
J. J. Tackett, 1904-1906
J. D. Wingfield, 1906-1908
L. S. Kennedy, 1908-1914
J. J. Tackett, 1914-1916
L. S. Kennedy, 1916-1923
W. D. Freeman, 1923-1939
J. D. Robbins, 1939--

(2) vice Coffman, declared
insane

COUNTY AGENTS

J. F. Dillinger, 1907-1910
J. R. Woods, 1910-1917
J. T. M. Holt, 1917-1919
Brad Scott, 1930-1934

L. C. Carter, 1934-1936
E. S. McCright, 1936-1937
Clifford L. Smith, 1937-1938
Cole Westbrook, 1938--

TAX ASSESSORS

N. A. Penlard, 1869-1871
T. L. Martin, 1871-1873
Stephen Muse, 1873-1876
J. T. Robins, 1876-1880
G. B. Willis, 1880-1886
James N. Wasson, 1886-1888
G. W. Willis, 1888-1890
Geo. R. Miller, 1890-1894
R. M. Reece, 1894-1896
T. T. Burns, 1896-1898
T. T. Blakeley, 1898-1900

James L. Blakeley, 1900-1904
W. C. Crook, 1904-1908
J. L. Blakeley, 1908-1910
B. D. Millsop, 1910-1914
A. L. Smith, 1914-1916
Guilford Bates, 1916-1921
J. T. M. Holt, 1921-1925
Irvin Freeman, 1925-1929
A. L. Gray, 1929-1935
George White, 1935-1939
Walter V. Smith, 1939--

List of County Officials

SURVEYORS

| | |
|-------------------------------|-----------------------------|
| John M. Harris, 1846-1849 | G. E. Collier, 1892-1894 |
| I. I. McLendon, 1849-1851 | H. R. Collier, 1894-1898 |
| Andrew Bowles, 1850-1861 | S. T. Fair, 1898-1900 |
| George B. Hill, 1851-1852 (1) | Sol. Collier, 1900-1904 |
| Robert S. Burk, 1852-1856 | S. T. Fair, 1904-1908 |
| James Cogburn, 1856-1870 | M. E. Prowse, 1908-1912 |
| Melrose Larkin, 1870-1872 | J. T. Fair, 1912-1916 |
| Larkin Melson, 1872-1874 | M. E. Prowse, 1916-1919 |
| Cornelius Snider, 1874-1876 | G. T. Prowse, 1919-1921 |
| H. R. Collier, 1876-1878 | James T. Fair, 1921-1931 |
| L. Melson, 1878-1880 | James T. Schmitt, 1931-1933 |
| W. H. Highsmith, 1880-1888 | Tom Wacaster, 1933-1935 |
| H. R. Collier, 1888-1892 | Oscar Fair, 1935-- |

(1) vice Bowles, refused to accept

Montgomery County Members of
Constitutional Conventions

Alexander M. Clingham, 1861
John C. Friddy, 1864
John C. Friddy, 1868
Nicholas W. Cable, 1874

CHRONOLOGICAL INDEX

(All numbers refer to entries. A record entry number is listed under each decade which the record covers in full or in part. An entry number is underlined to call attention to the initial appearance of the record; the last listing of the entry number indicates the decade within which the record ends.)

1841-50

3, 6, 35, 37-38, 42-43, 67-69, 71, 73, 103

1851-60

3, 4, 6, 26, 35, 36, 37-38, 42-43, 60, 66, 67-69, 71, 73, 103

1861-70

3-4, 6, 26, 31, 34, 35-38, 42-43, 46, 49, 60, 65, 66-69, 71, 73, 89-90, 92, 103, 108-109

1871-80

3, 4, 6, 11, 15, 21, 26, 28, 31, 34-38, 39, 42-43, 46, 49, 60, 65-69, 70, 71, 72, 73, 79-80, 89-90, 91, 92, 103, 108-109, 114

1881-90

3, 4, 6, 11, 12, 15, 19, 21, 25, 26, 28, 31, 32, 34-39, 42-43, 46, 48, 49, 54, 60, 61, 65-73, 79-80, 88, 89-92, 95-97, 99, 103, 106, 108-109, 111-112, 114

1891-1900

3-4, 6, 11-12, 15, 19, 25-26, 28, 31-32, 34-39, 40, 42-43, 46, 48-49, 54, 60-61, 65-67, 69-73, 79-80, 85-87, 88-92, 95-97, 99, 103, 106, 108-109, 111-112

1901-10

1, 3-4, 6, 7, 11-12, 13, 15, 19, 24, 25-26, 27, 28, 31-32, 33, 34-40, 42-43, 44-45, 46, 47, 48-49, 51, 53, 54, 56, 60-61, 62, 64, 65-67, 69-73, 76, 78, 79-80, 84, 85-92, 94, 95-97, 99, 103, 104-105, 106, 107, 108-109, 111-112

1911-20

1, 3-4, 6-7, 8-10, 11-13, 15, 19, 20, 24-28, 29, 31-40, 42-49, 50, 51, 53-54, 55, 56, 60-62, 64-67, 69-73, 74, 76, 78-80, 81, 84-87, 89-92, 93, 94-96, 99, 100-101, 103-109, 111-112

1921-30

1, 2, 3-4, 6, 8-13, 15, 18, 19-20, 22, 24-29, 31-40, 42-48, 50-51, 52, 53-56, 58, 60-62, 63, 64-67, 69-74, 75, 76, 77, 78-81, 83, 84-87, 89-90, 93-96, 98, 99-101, 103-109, 110, 112, 115-117

1931-40

1, 3-4, 5, 6, 8-13, 14, 15, 17, 18-20, 23, 24, 27, 29, 30, 31-37, 39-40, 41, 42-48, 50-56, 57, 58, 59, 60-66, 70, 72-74, 76-77, 78-81, 82, 83-86, 89-90, 93-96, 98-100, 102, 103, 105-110, 112, 113, 115-117, 118

Chronological Index

- 60 -

1941-50

1, 3, 5-6, 8-11, 13-15, 18-20, 23, 27, 29-30, 32-37, 39-44, 46, 48,
50-55, 57-66, 70, 72-74, 76, 79, 82-84, 89-90, 93-96, 98, 100, 102-
103, 105, 107-109, 115, 117-118

ALPHABETICAL INDEX

Numbers not underlined indicate entry numbers. Numbers underlined indicate page numbers.

- Abbreviations, ix
Accounts current, 67
Administrators'
 bonds, 66
 settlements, 69
Agreements, record of, 36
Agriculture, 5-6
Albert Pike camp, recreational
 park near Norman, 6
Appraisements of estates, 70
Assessed valuation of real and
 personal property in 1940, 6
Audit of Montgomery County, 83

Bibliography, 47-51
"Big Mazarin Creek", 1
Bills of sale
 original, 27
 record of, 28
Births, record of, 101
Blueprints, miscellaneous, 25
Board of supervisors, see Super-
 visors
Bowles, Andrew, first county judge,
 4

Caddo Gap
 an ancient name, 1, 2
 elevation, 1
Caddo Mill, scene of Civil War
 skirmish, 4
Caddo River, 1, 2
Caddo township, 2
Chancery court
 case papers
 disposed of, 56
 pending, 57
 docket
 closed cases, 58
 pending cases, 59
 fee book, 61
 record, 60
 records, 56-61
Chattel mortgages
 chronological listing of, 32
 original, 29
 record of, 31
 see also Mortgages

Churches, 7-8
Circuit
 clerk
 first, 2
 miscellaneous papers, 4
 records, 4-39
 court
 civil
 case papers
 disposed of, 40
 pending, 41
 fee book, 50
 criminal
 case papers
 disposed of, 51
 pending, 52
 fee book, 55
 docket, 42
 execution orders
 original, 47
 record of, 48
 fee book, 49
 judgments, record of, 46
 record, 43
 records, 40-61
Claims
 against estates, 68
 allowed (county court), 1
Clerk, county
 fee record, 82
 records, 81-115
Clingman, Alexander M., member of
 secession convention, 4
Collier Springs, 6
Comptroller's report (audit of Mont-
 gomery County), 83
Corn production, 5
Coroner, first, 2
Corporation annual reports, 104
Cotton production, 5
Cotton, Zora L., courthouse contract-
 or, 2
County court
 claims allowed, 1
 record, 3
 records, 1-3
Courthouse
 description of, 3

Index

- Courthouse (cont'd)
 - floor plans, 21-23
- Covenants, see Agreements
- Crystal Mountain, 6
- Crystal Springs, 6
- Deeds
 - indexes to, 7-9
 - original, 5
 - record of, 6
- Delinquent
 - lands
 - sold
 - to individuals, 97
 - to the State, 98
 - subject to sale, 96
- Deputies, appointments of, 113, 114
- De Soto, 1
- Equalization board record, 116
- Estates
 - claims against, 68
 - inventories and appraisements
 - of, 70
 - sale of, 71
- Estray
 - papers, 107
 - record, 108
- Executors' settlements, 69
- Explanatory notes, x-xi
- Fail, Prof. W. G., early teacher, 7
- Farm Credit Administration mortgages, 30
- Farm property valuation, 5-6
- Farm Security Administration mortgages, 14
- Federal crop loans, 30
- Fiddlers Creek, 1
- Fisher, George, first circuit clerk, 2
- Fleming, John M., first county treasurer, 2
- Floor plans of courthouse, 21-23
- Fourche Mountain, elevation of, 1
- Gaston township, 76
- Governmental organization, 14-15
- Grand jury
 - indictments, 54
 - papers, 53
- Greasy Cove, home of Albert Pike, 4
- Guardians'
 - bonds, 66
 - settlements, 69
- Hay production, 5
- Historical sketch, 1-11
- Home Owners Loan Corporation mortgage record, 17
- Homestead record, 88
- Honey production in 1940, 5
- Housing, care, and accessibility
 - of the records, 17-19
- Hutchinson Springs, 1
- Incorporation record, 105
- Indictments, 54
- Industry and commerce, 4-5
- Insanity record, 74
- Inventories of estates, 70
- Joutel, early explorer, 2
- Judge, county, first, 2
- Justice of the peace court
 - docket, 76
 - judgments filed in circuit court, 45
 - official transcripts, 81
- Juvenile court record, 75
- Land titles, court orders affecting, 61
- Langsford, Alexander, first coroner, 2
- Leases, real estate, record of, 12
- Lick Creek, 1
- Liens
 - mechanics', 20, 21
 - original, 20
 - United States tax, 22
- Lis pendens
 - original, 20
 - notices, 51
 - record of, 24
- Livestock production, 5
- Maddox Springs, 1
- Manufacturing, 4-5
- Maps, miscellaneous, 25
- Marble township, 2
- Marks and brands, record of, 109
- Marriage licenses
 - order for, 102
 - record of, 103

Index

(Mar-Pro)

Married woman's property, schedule of, 5111, 39
 Materialmens' liens, 20
 Mauldin, site of fish rearing ponds, 6
 Mayberry Springs, 1
 Mechanics' liens, 20, 21
 Minerals, 5
 Mining land record, 11
 Ministers' credentials, record of, 35
 Montgomery County
 agriculture, 5-6
 area
 original, 1
 present, 1
 boundaries, 1
 boundary changes, 3
 Civil War activities in, 3-4
 creation of, 2
 economic development, 4-5
 elevation, 1
 governmental organization, 14-15
 growing season, 1
 highways, 7
 historical sketch, 1-11
 manufacturing, 4-5
 minerals, 5
 named in honor of, 2
 newspapers, 8
 population, 8
 precipitation, 1
 railroads, 7
 rainfall, 1
 a recreational area, 6
 rivers, 1
 snowfall, 1
 topography, 1
 tree varieties, 6
 Montgomery, former name of Mount Ida, 2
 Montgomery, General Richard, county named in honor of, 2
 Mortgages
 Farm Credit Administration, 30
 Farm Security Administration, 14
 Home Owners Loan Corporation, 17
 index to, 7-9
 orders for release of, 18, 19
 original, 13
 record of, 15
 see also Chattel mortgages
 Mount Ida
 capture by Federal troops, 4

Mount Ida (cont'd)
 efforts to remove county seat from, 2
 formerly called Montgomery, 2
 once known as Salem, 2
 population in 1940, 8
 post office established at, 2
 precipitation at, 1
 Mount Ida Herald, 8
 Mountain township, 2
 Muddy Creek area, a federal game refuge, 6
 Naturalization petitions, record of, 44
 Negro school enrollment in 1939-40, 7
 Newspapers, 8
 Norman
 efforts to remove county seat to, 2
 formerly called Womble, 2
 population in 1940, 8
 a rail terminal, 7
 Oat production, 5
 Official bonds
 original, 33
 record of, 34
 Officials, county
 list of, 53
 reports to quorum court, 73
 Oil and gas lease record, 10
 Old age pension record, 23
 Ouachita National Forest, 6
 Ouachita River, 1
 Peach production, 5
 Personal property
 assessments, 91, 93
 tax rolls, 92, 93
 Physicians and surgeons, register of, 106
 Pike, Albert, temporary resident of Montgomery County, 3-4
 Pistol register, 110
 Plats of towns, 26
 Population, 8
 Powers of attorney
 original, 511
 record of, 37
 Probate court
 cases
 disposed of, 62

- Probate court
 - cases (cont'd)
 - pending, 63
 - docket, 72
 - record, 73
 - records, 62-74
- Producers' reports, 115
- Public millers licenses, record of, 38
- Quorum court
 - appropriation record, 80
 - officers' reports to, 78
 - proceedings, 79
 - records, 78-80
- Railroads, 7
- Real estate
 - assessments, 89
 - leases, 12
 - tax rolls, 90
- Real and personal property valuation in 1940, 6
- Recorder, see Circuit clerk
- Recorder's miscellaneous papers, 4
- Redeemed lands, record of, 100
- Redemption certificates, 99
- Road
 - district register, 112
 - improvement district commissioners' appointments, 2
- Robinson, N. E., first sheriff, 2
- Ryder Springs, 1
- Salem, former name of Mount Ida, 2
- Sales bill record, 71
- Sand and gravel production, 5
- Sawmills, 6
- Schedule of wife's separate property, 5iii, 39
- School
 - warrants
 - paid, 85
 - register of, 118
- School enumeration in 1939-40, 7
- Seat, county
 - efforts to remove, 2
 - established at Mount Ida, 2
- Second Kansas Cavalry, 4
- Severance tax reports, 115
- Sheriff
 - and collector's settlements, 86
 - first, 2
 - record of prisoners, 77
- Silver City, 5
- Sixteenth section land sales, 111
- Slate production in 1939, 5
- Slaves, number of
 - in 1845, 6
 - in 1850, 8
- South Fork, 1
- South Fork township, 76
- Sulphur Spring township, 2
- Supervisors, board of, proceedings of, 3
- Surgeons, register of, 106
- Symbols, ix
- Tax
 - books, abstract of, 94
 - receipts, record of, 95
 - Titles, land, court orders affecting, 6i
 - Town plats, 26
 - Treasurer, county
 - first, 2
 - records, 117, 118
 - settlements, 87
 - Tula, an ancient Indian village, 2
 - United States tax liens, 22
 - Valuation of real and personal property in 1940, 6
 - Vaught, A. P., narrator of attempt on life of Pike, 3-4
 - Warrants, county, numerical register of, 84
 - Whittington, Granville, pioneer merchant, 2
 - Wills
 - original, 64
 - record of, 65
 - Womble, former name of Norman, 2

PUBLICATIONS PREPARED BY THE
ARKANSAS HISTORICAL RECORDS SURVEY PROJECT
DIVISION OF COMMUNITY SERVICE PROGRAMS
WORK PROJECTS ADMINISTRATION

- 1) Inventory of the County Archives of Arkansas, No. 12, Cleburne County (Heber Springs). Historical Records Survey, Little Rock, Arkansas, March, 1939. mim. (217 pp.)
- 2) Inventory of the County Archives of Arkansas, No. 23, Faulkner County (Conway). Historical Records Survey, Little Rock, Arkansas, December, 1939. mim. (251 pp.)
- 3) Inventory of the County Archives of Arkansas, No. 30, Hot Spring County (Malvern). Historical Records Survey, Little Rock, Arkansas, March, 1940. mim. (vii, 121 pp.)
- 4) Inventory of the County Archives of Arkansas, No. 65, Searcy County (Marshall). Historical Records Survey, Little Rock, Arkansas, June, 1940. mim. (x, 112 pp.)
- 5) Inventory of the County Archives of Arkansas, No. 19, Cross County (Wynne). Historical Records Survey, Little Rock, Arkansas, July, 1940. mim. (xi, 114 pp.)
- 6) Inventory of the County Archives of Arkansas, No. 13, Cleveland County (Rison). Historical Records Survey, Little Rock, Arkansas, April, 1941. mim. (xv, 113 pp.)
- 7) Inventory of the Church Archives of Arkansas, Church of Christ, Scientist. Historical Records Survey, Little Rock, Arkansas, 1941. mim. (iii, 35 pp.)
- 8) Inventory of the County Archives of Arkansas, No. 4, Benton County (Bentonville). Historical Records Survey, Little Rock, Arkansas, December, 1941. mim. (xv, 112 pp.)
- 9) Inventory of the County Archives of Arkansas, No. 34, Jackson County (Newport). Historical Records Survey, Little Rock, Arkansas, October, 1941. mim. (vii, 113 pp.)
- 10) Inventory of the County Archives of Arkansas, No. 57, Polk County (Mena). Historical Records Survey, Little Rock, Arkansas, January, 1942. mim. (xvii, 113 pp.)
- 11) Inventory of the County Archives of Arkansas, No. 3, Baxter County (Mountain Home). Historical Records Survey, Little Rock, Arkansas, February, 1942. mim. (xvi, 73 pp.)
- 12) Inventory of the County Archives of Arkansas, No. 63, Scott County (Waldron). Historical Records Survey, Little Rock, Arkansas, March, 1942. mim. (xviii, 85 pp.)

Publications (cont'd)

13) Inventory of the County Archives of Arkansas, No. 33, Izard County (Melbourne). Historical Records Survey, Little Rock, Arkansas, March, 1942. mim. (xviii, 81 pp.)

14) Guide to Vital Statistic Records in Arkansas Volume II Church Archives Prepared by the Arkansas Historical Survey Project Division of Community Service Programs Work Projects Administration Little Rock, Arkansas The Historical Records Survey. April, 1942 mim. (xv, 620 pp.)

15) American Imprints Inventory No. 39, A Check List of Arkansas Imprints, 1821-1876 Prepared by The Arkansas Historical Records Survey Division of Community Service Programs Work Projects Administration Little Rock, Arkansas The Arkansas Historical Records Survey April 1942 mim. (139 pp.)

33,
r, r-

me II
roject
ation
942

of
l
jects
ecords

