



L.O.C. II

The sequel

Left of Center is proud to present the second half of the new rail writing team. I'm not going to take a lot of time introducing myself because there is plenty of time for that later. My name is Jared.

The less than hostile takeover of this job may have aroused some doubts about rail quality. In fact, I walk around the newspaper office and there seems to be a consensus that we have some big shoes to fill. Is it possible? Will the sequel be successful? To answer these questions I offer the following examples that we hope to live up to, and then a few examples we hope not to follow.

L.O.C. II will follow in the path of:

- *Rocky II*: perhaps the greatest sequel ever. It surpassed the first in my opinion, but they weren't done.
- *Rocky III*: This was by far the best, despite the fact that they had to get *Rocky III* out of the way first (Hulk Hogan? Mr. T? Come On!!).
- *The Godfather II*: This sequel shows Coppola at his Oscar award winning best. We'd like to "Make you an offer you can't refuse."
- *72*: "Read the rail if you want to live" (Need I say more?)
- *UK's Men's Basketball team*: All I need to say is that the second half of the year is much better than the first (Kudos to Tubby).

L.O.C. II will strive in every way not to be like:

- *Indiana Jones and the Temple of Doom*: While surrounded by greatness this flick (I say flick because I hesitate to call it a movie) was overshadowed by its predecessor and *DOOMED* to fail as a sequel.
- *Aladdin*: By releasing it straight to video Disney dubbed it crap before it began. This combined with the loss of Robin Williams' humor led to what I call a sucky sequel.
- *Titanic*: This little known film was sunk before it began and the producers drowned in the debt accumulated by the casting of the Olsen twins.

Fear not Kernel readers the great tradition of the rail shall go on. This rail will follow in the footsteps of the great sequels. Flop we shall not!
-Jared Whalen
rail_editor@hotmail.com

THE 411

Tomorrow's weather



58 38

Hi Lo
Only in Kentucky will it snow on the first day of spring.

Kentucky Kernel

VOL. #106 ISSUE #120

ESTABLISHED IN 1892 INDEPENDENT SINCE 1971

News tips?

Call: 257-1915 or write:
kernel@pop.uky.edu

WEDNESDAY KENTUCKY KERNEL

March 21, 2001

Break a leg
Theater
freshman get
ready to take
the stage in
production! 6

http://www.kykernel.com

AND THE GPAC GOES TO

Greeks go with Robinson/Harralson

By Jenny Robertson

DIALOGUE CO-EDITOR

In the 2000 U.S. presidential election, Florida's 25 electoral votes decided who got to move into the White House.

At UK, the Greek community traditionally decides who will occupy the Student Government Association's executive suite in the Student Center.

The Greek Political Action Committee voted Tuesday night to endorse presidential and vice presidential candidates Tim Robinson and Caroline Harralson.

The GPAC historically en-

dorses the winning ticket; according to a news release distributed by Edwin Orange, the campaign adviser for the Robinson/Harralson campaign, GPAC has endorsed 12 winning candidates since 1988.

Many feel this is an important win for the Robinson/Harralson campaign.

"We think we've earned the Greek support and now it's time to earn the rest of the campus' support," Robinson said.

Harralson agreed that continuing a campus-wide campaign would be important.

"This won't change our strate-

gy," she said. "From the very beginning, we've tried to include a lot of different organizations."

After Tuesday night's vote, other candidates will also look to other organizations for support, particularly the non-Greek community.

Presidential candidate Steve Shaw said that, because there are four tickets, the Greek vote would not carry as much weight as it has in the past. Each ticket had at least one member who is involved with a Greek organization.

"Independents are going to win this race because the Greek ticket is so split up," Shaw said.

Two representatives from each sorority and fraternity in the Panhellenic Council, the Interfraternity Council and the NUBIAN Council participated in the vote, which was preceded by a debate. Four panelists asked a variety of questions. This was followed by 15 minutes of questions from the audience.

Overall, candidates stressed open communication lines between SGA, the Greek community, other campus organizations and students.

"Every student on this campus who pays tuition is a part of SGA," said presidential candidate

Nic Wilson. "We don't want students to be left behind whenever decisions are being made."

Presidential candidate Alyshia Ochse agreed that the executive door should stay open to students. She said that, as president, she would be visible on campus.

Despite some candidates hopes of overcoming the GPAC vote, Alan McSantis, College of Communications professor and moderator of Tuesday night's debate, stressed the influence the endorsement has carried in the past.

"This is Florida," he said. "Whoever wins this traditionally wins the election."

DEPRESSION

The serious signs, sides of suicide

Loss of hope: Suicide is the second leading cause of death among young people, it is preceded by car accidents; rates have doubled since the '50s

By Anne Rogers

CONTRIBUTING WRITER

Why do we mourn the loss of lovers like Romeo and Juliet or pity the destruction of noblemen like Othello? Why do their stories seem so decent and heroic when their deaths solved nothing and even produced more serious consequences afterward?

The star-crossed lovers' end "naught could remove their parents' rage", and the feud continued after their death.

Othello, who after his death was known as "great of heart", still died with a murderer's soul without redemption.

Studying certain Shakespeare tales introduces us to a glorified and gallant world of suicide. However, beneath those eloquent words and famous phrases lies the disastrous and nightmarish truth of an illness that never kills without leaving a trail of unanswered questions and grieving survivors.

Suicide is the second leading cause of death, preceded only by car accidents, among college students in this country. Since the 1950s, college suicide has doubled its rate in women and tripled among men.

According to Dr. Charlie O'Neil, assistant director of the Counseling and Testing Center at UK, five-to-seven percent of his clients discuss thoughts on suicide in a serious manner. O'Neil also said that though it is not abnormal to think of suicide, it is a critical matter if the thought is not passing or briefly contemplated.

Fortunately, UK does not appear to have a high suicide rate. But O'Neil says he does receive a fair number of suicide referrals from faculty, advisers, parents and resident advisers. Most of the calls come during advising weeks, when students feel pressures in deciding on the next semester or year.

O'Neil also feels that it is hard to get an exact idea of how many UK students seriously contemplate suicide. Since some attempts may be made off-campus, it is difficult to document each case if it is not publicized or



CHRIS ROSENTHAL | KERNEL STAFF

ENLIGHTENMENT

WSP important to all genders

By Andrew Cohen

STAFF WRITER

Joan Callahan doesn't deny that our society is sexist. In fact, the professor of philosophy and director of the women's studies program will admit to it.

"Our society is still very, very sexist," Callahan said. "One way UK is attempting to educate students about the sexism that exists in our society is through the women's studies program, a program that pays special attention to the position of and contributions by women."

Callahan, who has been the director of the program since 1986, said it offers an undergraduate minor, a topical major and a graduate certificate. Each course requires coursework in feminist theory and cross-cultural studies as well as courses on women and gender in a variety of disciplines. Students can complete either the major or the minor in the same amount of time it takes to do any such program in the humanities or social sciences.

Callahan said students in the program study a variety of topics related to gender.

"Gender...is a thoroughly social-constructed category, having to do with the feminine and the masculine," she said.

Gender, Callahan said, affects many different areas like appearance, behaviors, tasks, characteristics, virtues and vices.

One of the main studies in the program relates to how this gender-coding system works, she said.

"Who benefits from the gender codings we have and who is harmed by the gender codings we have."

The course also pays careful attention to other categories, like race or ethnicity, class, sexual orientation, ability and disability and age.

"You can't just study 'women' because there are no 'women as such' — women are in different social locations, and the studies attend to this," Callahan said.

The contributions of women, an aspect Callahan said is often neglected in traditional history and literature courses, are also studied.

The interest in this field is growing, more so with women than men, Callahan said. She attributes this to the fact that women seem more committed to taking courses that reflect on issues relating to gender.

"That's what the enrollment numbers reflect. But men are not excluded," Callahan said there have been several men in the graduate certificate curriculum and nearly one-third of the students in the current course, feminist philosophy, are men.

And it is both women and men who are affected by the study of women.

"Women's studies is important because sex and gender affect every aspect of our lives whether or not we're aware of it," Callahan said.

HEALTH

Diet guru shows students the way to Subway

Slim sandwiches: Subway's commercial star to visit campus on Friday as part of UK's healthy eating campaign

By Paul Haker

STAFF WRITER

Happy Gilmore isn't the only person with a fascination for Subway.

Students who enjoy Subway sandwiches or are interested in learning more about the Subway diet will have the opportunity to hear the man who brought attention to Subway's healthy fast-food alternatives.

Jared Fogle, the college student made famous by losing 245 pounds by eating a Subway sandwich for lunch and dinner for nearly a year, will speak at 10 a.m. Friday at the UK Commons Area.

His talk is sponsored by Health Services, who are promoting a Five-A-Day

campaign for the month of March. The Five-A-Day campaign is designed to inform students of the importance of eating a proper diet that includes eating five servings of fruits and vegetables.

Fogle, who graduated from Indiana University in May 2000, started his diet in March 1998 after seeing a sign at a local Subway advertising seven sandwiches with six grams of fat or less. For nearly a year, Jared ate a six-inch turkey sub for lunch and a foot-long veggie sub for dinner. With each meal, he consumed a bag of baked potato chips and a diet soft drink.

Fogle weighed 425 pounds when he began his diet in March 1998. A year later, he weighed 180. After he lost the first hundred pounds, he started walking instead of taking the bus. When he had been on the diet for a year, he began to eat other low

fat foods. He currently weighs 190 pounds.

The commercials began early last year and have inspired many to go on this diet. The latest advertisement includes testimonies of people inspired by Fogle to go on the diet. Fogle has given numerous talks since appearing in the commercials.

Alex Beh, an undeclared freshman, said Fogle's weight loss was amazing. "It's hard to believe that eating just Subway caused him to lose that much weight in only a year. It's amazing that he was able to do it. If I ate that much food from Subway, I'd probably do the opposite and gain weight."



PHOTO FURNISHED

The Subway

Jared Fogle will speak at 10 a.m. on Friday at the UK Commons Area. Fogle lost 245 pounds on the Subway diet.

In shape

Jared Fogle crafted the Subway diet when he began eating only Subway sandwiches two years ago. Fogle graduated from Indiana University in May 2000.

ALL THE NEWS THAT FITS

The Low-down

Fed poised to cut rates a third time

WASHINGTON — The Federal Reserve is poised to cut interest rates for a third time this year in an effort to keep the record U.S. economic expansion from ending, economists say. Another big rate cut is needed now, they believe, given the continued weak state of manufacturing and the cautious mood of consumers, whose spending accounts for two-thirds of all economic activity. Another reason: the huge sell-off that has been occurring on Wall Street, where the Dow Jones Industrial Average last week suffered its biggest weekly drop in 11 years. If paper losses make consumers feel a lot less wealthy and they stop spending, that could put an end to the 10-year streak of uninterrupted economic growth, analysts said.

I wasn't too familiar with her music but I bought it for the album cover. I loved her makeup and her outfit." *Chyna, 31, World Wrestling Federation superstar, suggesting to the Associated Press that rapper Lil' Kim would make a great tag team partner.*

U.S. and Israel vs. Palestinians

UNITED NATIONS — The battle lines are clear. It's the Palestinians and dozens of supporters vs. Israel and the United States. As the Palestinians again pushed Monday for a U.N. observer force to help quell six months of violence, the differences between the two sides were again starkly clear. Since a previous request was defeated in December, the U.S. and Israeli administrations have changed — and so has the U.N. Security Council membership. But the Palestinian demand — argued during an open Security Council debate on Monday — still faces almost certain defeat. Since September, the violence has killed more than 425 people, including more than 350 Palestinians and dozens of Israeli Jews.

Finance debate begins with close vote

WASHINGTON — Senate supporters of limiting political donations narrowly overcame their first challenge in their drive to bring about the most significant change in campaign spending law in a quarter-century. The Senate by a 51-48 vote Monday defeated a proposal to effectually eliminate direct party contribution limits for candidates running against wealthy opponents who put at least \$1 million of their own money into a campaign. The vote opened two weeks of debate on legislation offered by Sens. John McCain, R-Ariz., and Russell Feingold, D-Wis., that would ban loosely regulated "soft money" donations that corporations, unions and wealthy individuals give political parties.

Sub officer apologizes

PEARL HARBOR, Hawaii — His voice brimming with emotion, an officer of the Navy submarine that rammed a Japanese trawler apologized as an inquiry into the deadly accident neared its end. "To the families of those who perished and to the crew of the Ehime Maru ... I humbly apologize," Lt. j.g. Michael Coen said



Monday. Coen, 26, is one of three officers of the USS Greeneville under investigation over the Feb. 9 sinking of the Ehime Maru. The Greeneville smashed into the Japanese fishing vessel while demonstrating a rapid-surfacing drill for 16 civilians. Nine people, including four teen-age boys, were killed. Coen read his unsworn statement to three admirals presiding over the Navy's court of inquiry. Attorneys for another officer, Lt. Cmdr. Gerald Pfeiffer, submitted a written statement to the court that was not released to the public. Closing arguments in the inquiry were expected to begin Tuesday.

Welfare programs pass on choice

WASHINGTON — Churches and other religious organizations have shown little enthusiasm for a 1996 federal law that invited them into the competition for government welfare dollars, and states have done little to promote the program, a 50-state Associated Press survey shows. Just five states have aggressively used "charitable choice," which President Bush hopes to expand to programs across government, and nearly two-thirds of states have bypassed the opportunity altogether, the survey found. The AP survey found 31 states and the District of Columbia have awarded no government welfare contracts to religious groups that would not have been eligible otherwise. An additional 14 states report sporadic use of charitable choice — a handful of contracts at most. Just five states — Arkansas, Indiana, Missouri, Ohio and Texas — have embraced it, spending hundreds of thousands or even millions of dollars.

Mir will be dumped Friday

MOSCOW — The Russian space agency on Tuesday set a final firm date for dumping the Mir space station, saying it would be brought down into the South Pacific on Friday by a six-hour series of engine pushes. The Progress cargo ship docked at the station will fire its engines twice during two consecutive orbits to lower the station. Several hours later, it will fire one last time to send the station hurtling into the South Pacific between Australia and Chile at around 9:30 a.m. Moscow time Friday, said Russian Aerospace Agency spokesman Konstantin Kresidenko.

Guyana's election peaceful

GEORGETOWN, Guyana — Opposition supporters angrily complained that many names were left off voter registration lists, with some alleging a vote-rigging conspiracy in Guyana's racially charged election. The South American country's national elections on Monday followed a long-standing pattern by pitting those of African descent against those of East Indian ancestry. First results were expected Tuesday. Some supporters of the black-dominated opposition said they suspect a vote-rigging conspiracy by the governing party of President Bharrat Jagdeo, who like the majority of his supporters, is of Indian descent.

Compiled from wire reports.

SUICIDE

Continued from page 1

brought to the attention of the University.

According to the American Foundation of Suicide Prevention, the greatest cause of suicide among college students is from mental illness — usually depression.

While AFSP claims that suicide factors can be very diverse and complex, issues such as anxiety, stress, rage, hopelessness and alcohol are most likely to increase the risk, especially with college students.

In the article "Moods and Worldwide Views: Suicide on Campus" by Ricardo Rivera, he states: "the presence of mood disorders not only makes it more likely that a person will attempt suicide, but will also incline them towards more 'serious' and planned efforts."

Besides medical and personal factors, Rivera also

writes that cultural aspects can attribute to the growing number of suicides among college students in America. He claims that universities offer many life-altering choices, and sometimes students have a harder time identifying with something meaningful or purposeful in their studies. This loss of control can cause the risk factors of anxiety and stress, among others, to rise.

The best way to help a potential suicide victim is by encouraging that person to talk with a counselor or someone influential (a teacher or parent).

Then, if therapy or hospitalization is necessary, it can be provided and used to reduce the possibility of attempted or succeeding in committing suicide.

Need help?

The Counseling and Testing Center is open 8 a.m.-5 p.m. on weekdays. The center can be reached at 257-8701.

MADNESS

CKBC out for blood

STAFF REPORT

Many students have been bleeding blue this month thanks to March Madness.

The Central Kentucky Blood Center hopes students will bleed a little more on Wednesday and Thursday of this week.

CKBC, in conjunction with the Baptist Student Union and FarmHouse fraternity, will hold blood drives honoring the men's basketball team for making it to the Sweet 16 of the NCAA Tournament.

The center has suffered from ongoing blood shortages caused by the flu and blood-drive cancellations.

Mickey Bowling, manager of donor resources at CKBC, said the center must stay at a level of 3,000 pints of blood. Bowling said the center has seen shortages of 300 units below the necessary level.

"It has begun to recover but we still need good participation at all the drives on campus and everywhere," Bowling said.

The last campus blood drive was in February when UK competed against the University of Arkansas — UK beat Arkansas.

The UK Baptist Student Union blood drive will be on Wednesday from 10 a.m. - 6 p.m. at the UK Baptist Student Center. The FarmHouse fraternity will have their blood drive on Thursday from 11 a.m. - 7 p.m. at the FarmHouse fraternity house across from the William T. Young Library.

Patent protection. Copyright registration. Privacy policies. You need a lot more for your e-commerce business than a great site. And that's where Stoll, Keenon & Park, LLP can help. The attorneys in our Intellectual Property and Technology Department offer knowledgeable legal advice for the digital world.

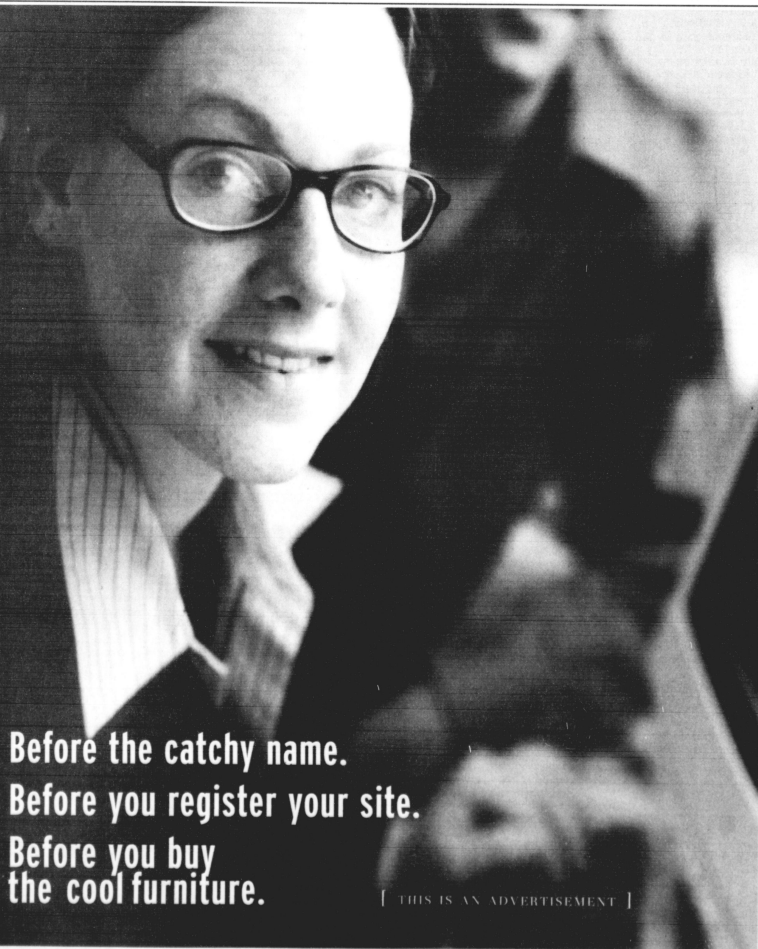
Before you do anything, visit our site at www.skp.com. It may not be as cool as yours. But you may find it to be just as valuable.

Counsel for a changing world.



STOLL, KEENON & PARK, LLP
(859) 231-3000

LEXINGTON LOUISVILLE FRANKFORT HENDERSON



Before the catchy name.
Before you register your site.
Before you buy the cool furniture.

[THIS IS AN ADVERTISEMENT]

MEDICINE

Liver transplant performed on 9-year-old girl at UK

Kudos: Second pediatric liver transplant at UK

STAFF REPORT

Elizabeth Henderson became the youngest patient to receive a liver transplant by a UK Hospital surgical team last week. The eight-hour surgery was performed on the 9-year-old central Kentucky girl last Thursday. Dr. Dinesh Ranjan, director of UK's liver and pancreas transplant program, led the surgical team that consisted of Dr. Thomas Johnston, director of UK's pediatric and renal transplant program and Dr. K. Sudhakar Reddy, a liver transplant surgeon and associate professor of surgery. Two anesthesiologists and three nurses and/or operating room technicians were also part of the surgical team. Henderson was the second pediatric patient to receive a liver transplant at UK.

"This is the second pediatric liver transplant we have performed, and it is quite a milestone for our liver transplant program," Rajan said.

UK's first pediatric liver transplant was performed on May 18, 1998 on a 13-year-old girl, who continues to do well.

Henderson, who has alpha-1 antitrypsin deficiency, was listed in critical condition after Thursday's surgery, as is the case for all transplant patients immediately following surgery. She was moved to the pediatric intensive care unit to a regular room in the UK's Children's Hospital, Monday.

AIATD is a hereditary defect in body chemistry that affects more than 100,000 Americans.

A protein that circulates in the blood, the liver produces

most of the protein in the blood. It protects the tissues of the body from being damaged from chemicals in white blood cells.

White blood cells contain enzymes that help them move through tissues, clean up wounds and perform other functions.

The activities of these chemicals must be strictly controlled to keep them from attacking normal tissues of the body. Alpha-1 antitrypsin normally provides one type of protection against the chemicals.

The most common genetic cause of liver disease in children, AIATD occurs when the amount alpha-1 antitrypsin in the blood is very low.

That causes lung problems because of the lack of alpha-1 antitrypsin means the tiny air sacs in the lungs aren't protected from the chemicals released from white blood cells.

WHAT DO YOU THINK?

Students, faculty members can rate library in survey

By Becky Heisel
STAFF WRITER

Students and faculty will get a chance to comment on the UK library system in an e-mail survey next week. The survey measures what people think about the library services and appearance.

All libraries, from the large William T. Young to the smaller specialty libraries, are included. "We are trying to pick up on people's perceptions of the service quality," said Judy Wiza, assessment coordinator for the libraries.

A random sample of students and faculty will be notified by e-mail March 26. The e-mail will link to a web site with the survey, which can then be completed.

All survey responses will be

confidential, and no identifying links between responses and the person responding will be kept.

If a person not chosen by the sampling process wants to participate, they may receive a paper copy of the survey or be directed to the web site by Wiza.

Survey questions range from types of services expected by library users to how well library employees give current services. How complete and comprehensive the libraries' collections are included in the survey.

The physical appearance of the libraries is also a concern.

"We want to know if it's a quiet, meditative place to study," Wiza said.

As libraries receive data from the surveys, they will be able to compare themselves with other university libraries. UK,

which is one of 45 university libraries participating in the survey, hopes to gain an understanding of practices that work the best.

"Besides understanding people's perceptions, we want to identify areas where we need to improve," Wiza said. "If we see certain areas that didn't get high marks we can work on them."

The UK survey is part of a pilot program to fine-tune the service, and soon the ARL will offer the survey system to all academic libraries interested in knowing what their patrons think.

The survey is given to LibQUAL+, a web-based instrument controlled by the Association of Research Libraries. It began at Texas A&M University where LibQUAL+ has been used for several years.

WORLD NEWS

Abuse of nuns a problem

ASSOCIATED PRESS

VATICAN CITY — The Vatican on Tuesday denied a report in the National Catholic Reporter saying sexual abuse of nuns by priests — especially in AIDS-ravaged Africa — is a serious problem.

The magazine article is based on five reports compiled by senior members of women's religious orders and a priest and dating to 1984. The publication said the reports have been discussed at high levels in the Vatican.

Vatican spokesman Joaquin Navarro-Valls acknowledged there were isolated cases of priests sexually abusing nuns, but said the problem is "restricted to a limited geographic area."

According to the National Catholic Reporter, priests afraid of contracting AIDS sometimes turn to young nuns, who are seen as safe sexual partners.

"In a few extreme instances, according to the documentation, priests have impregnated nuns, then encouraged them to have abortions," the magazine said.

In one case reported by Sister Maura O'Donohue, a physician and member of the Medical Missionary of Mary, a priest got a nun pregnant and then arranged for an abortion. She died during the procedure, the magazine said, and the priest officiated at her funeral Mass.

The reports cited by the National Catholic Reporter also say that nuns who become pregnant are often forced to leave their orders, while the priests involved are allowed to continue with their ministries.

The Vatican statement was issued Tuesday after the Italian media reported on the magazine article. The Vatican had refused comment to the National Catholic Reporter.

The National Catholic Reporter said there are no comprehensive statistics on the sexual abuse of nuns, but the "frequency and consistency of the reports point to a problem that needs to be addressed."

The reports cited by the National Catholic Reporter link the problem to cultural attitudes toward celibacy as well as to the fear of AIDS and to traditions of female subservience.

The Rev. Bernardo Cervellera, director of Fides, the news agency of the Vatican's missionary arm, said celibacy has always been a struggle for some priests, but he was surprised at the accounts of sexual abuse.

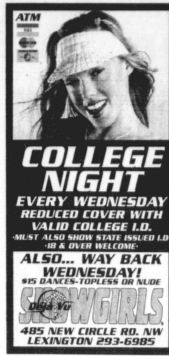
"It was a missionary for 25 years and I never encountered such a problem," he said. "Instead, I found priests and nuns who gave themselves wholly to people with leprosy, with AIDS ... priests and nuns who live their love for Christ."



Containing the outbreak

A vet drags the body of a sheep to a pile of carcasses in a field near the village of Uthbank in Cumbria, northern England, Tuesday. Elsewhere, troops were set to begin assisting in the operation to dispose of the backlog of carcasses of animals slaughtered in the foot-and-mouth outbreak.

ASSOCIATED PRESS



ARE YOUR UTILITY BILLS LARGER THAN YOUR RENT?

Don't settle for a home without proper insulation, water pressure and adequate parking!

We have efficiencies, townhouses, 1,2,3, & 4 Bedroom apartments on Euclid, Transylvania Park, Woodland, Lindenwalk, Maxwell, and East High.

*Walk to Campus
*All units have off street parking, carpeting, air conditioning, some with washer/dryer

Wassmer Properties
253-9893

KENTUCKY KERNEL

online @ http://www.kykernel.com

Golden Key International Honor Society



Upcoming Events:
March 7 - General Meeting
March 21 - Guest Speaker on Graduate Studies

All meetings are at 7:30 p.m. in Room 205 of the Student Center.

Refreshments will be served

Regency Pet Center

- 15% Student discount w/student ID (Excluding dog and cat food and items already on sale. Offer expires March 31, 2001.)
- 20 gallon Freshwater Aquarium set-up for only \$99.00 (10-9 Mon.-Sat. 12-6 Sun.)
- Great Selection of Exotic Freshwater and Marine Fish
- Discount Ends Soon!!!

K-Mart
Nicholasville Rd.
Regency Rd.
Regency Pet Center



2601-B Regency Rd
277-0204

Campus Calendar
March 19 - March 25, 2001

The Campus Calendar is produced by the Office of Student Activities. Registered Student Orgs. and UK Depts. can submit information for FREE online ONE WEEK PRIOR to the MONDAY information is to appear at: http://www.uky.edu/Campus_Calendar Call 257-6867 for more information.

MEETINGS	Thurs 22
<p>ACLU Meeting, 8pm, 231 Stud. Cr.</p> <p>"Back of Study Abroad" Info Session, 4:5pm, Bradley Hall Rm 108</p> <p>"Dinner in the Dorms, Hindu/Jewish Stud. Org.", 6:15pm, Bleezer Court</p> <p>Private Dining Room</p> <p>"Executive" Conf. for Christ, 7pm, 230 Stud. Cr.</p> <p>"Table Française, French Conversation Group", 4pm, Bleezer Hall</p> <p>Private Dining Room</p> <p>"Green Thumb Mtg.", 7:30pm, 106 Stud. Cr.</p> <p>"Prayer/Accountability Groups, Uplink Campus Ministries, 6:35pm, Calvary Baptist Church College House</p> <p>"Dinner and Worship Service, Uplink Campus Ministries, 5:30-6:30pm, Calvary Baptist Church Rec. & Outreach Cr.</p> <p>"College Libertarians Mtg.", 8:30pm, 113 Stud. Cr.</p> <p>"Equine Nutrition Mtg.", Sun. Ag. North Bldg. Rm A7</p> <p>"Dressage Team Mtg.", 5:45pm, Corrigan Bldg. 2nd Floor Conference Rm.</p> <p>"Woolen Stud. Assoc. Mtg.", 6:45pm, 211 Stud. Cr.</p> <p>"Golden Key Int'l. Honor Society Mtg.", 7:30pm, 205 Stud. Cr.</p>	<p>ADULTS</p> <p>"Orientation for Internships and Shadowing", 11am-12pm, 101 Student Bldg.</p> <p>MEETINGS</p> <p>"University International", 8pm, 278 Stud. Cr.</p> <p>"Freshman Focus", 7pm, Regt. Stud. Union Chapel</p> <p>"UK Lambda Mtg.", 7:30pm, 231 Stud. Cr.</p> <p>"Devotions in Lunch", 12:15pm, Regt. Stud. Union Multipurpose Room</p> <p>"Campus Crusade for Christ", 7:30pm, Stud. Cr. Washburn Theatre</p> <p>"Christian Student Fellowship: Synergy, Bpm, CSI, corner of Woodland and Columbus"</p> <p>"Green Party Mtg.", 9pm, 106 Stud. Cr.</p> <p>SPORTS</p> <p>"UK RUGBY Practice", 6:00pm, Club Sports Field</p> <p>ARTS/MOVIES</p> <p>"The Cycle Continues: A Freshman Showcase of Six Ten-Minute Plays, Bpm, Fine Arts Bldg. Briggs Theatre"</p>
MEETINGS	Sat 24
<p>"UK Judo Club", 5-6:30pm, Alumni Gym Loft</p> <p>ARTS/MOVIES</p> <p>"Cultural Writing Group", 6-8:30pm, Writing Cr. Young Library</p> <p>"Institutional Concert Band Festival", 7:30pm, Singletary Cr. CH</p> <p>INTRAMURAL/RECREATION</p> <p>UK Athletic Club, 5:30-7:30pm, UK Alumni Gym Loft</p> <p>"Medical and Recreation European Dancing", 7:00pm, 363 Old Stud. Cr.</p>	<p>"Towson Center Mass", 8pm</p> <p>SPORTS</p> <p>"Ten Women De Club Practice Hours", 11am-12:30pm, Alumni Gym Loft</p> <p>"Andrews Interscholastic Dressage Show", Louisville, KY</p> <p>"Virginia Interscholastic College Dressage Show", Bristol, VA</p> <p>SPECIAL EVENTS</p> <p>"Trip to the KY History Museum, Phi Alpha Theta, 12pm, meet in Stud. Cr. Annex parking lot"</p> <p>ARTS/MOVIES</p> <p>"Movie, Student Activities Board, Bpm, Lexington Opera House</p> <p>"UK Opera Theatre, Bpm, Singletary Cr. NH</p> <p>"The Cycle Continues: A Freshman Showcase of Six Ten-Minute Plays, Bpm, Fine Arts Bldg. Briggs Theatre"</p>
MEETINGS	Sun 11
<p>"The Women De Club Practice Hours", 5-6:30pm, Alumni Gym Loft</p> <p>"Dept. of Entomology Colloquium, Apm, Ag. Science Cr. North A-7</p> <p>LECTURES</p> <p>"The Cycle Continues: A Freshman Showcase of Six Ten-Minute Plays, Bpm, Fine Arts Bldg. Briggs Theatre"</p> <p>INTRAMURAL/RECREATION</p> <p>"Open Gym Volleyball, Uplink Campus Ministries, Bpm, Calvary Baptist Church Gym"</p>	<p>SPORTS</p> <p>"UK Judo Club", 5-7pm, Alumni Gym Loft</p> <p>ARTS/MOVIES</p> <p>"The Cycle Continues: A Freshman Showcase of Six Ten-Minute Plays, Bpm, Fine Arts Bldg. Briggs Theatre"</p> <p>INTRAMURAL/RECREATION</p> <p>"UK Athletic Club", 5pm, UK Alumni Gym Loft</p> <p>"Basketball Night, Uplink Campus Ministries, 7pm, Calvary Baptist Church Gym"</p> <p>"Dinner with..."</p> <p>"Movie, Women's & Co. for Unlabeled Women Representative Mtg., 5:30pm, Washburn Theatre"</p>

STATE NEWS

Day-care center ruled unsafe, closed

Inadequate supervision: The cause of 2-year-old boy's death still not known, day-care center is forced to close its doors

ASSOCIATED PRESS

LOUISVILLE, Ky. — A state hearing officer upheld a decision to close a day-care center where a 2-year-old boy was found dead in his bed last month while the state continues to investigate.

Gregory O. Varo ruled Wednesday that the boy was "inadequately supervised" at the Teddy Bear Day Care center in Louisville.

Domanek Massey was found unresponsive in a crib about 8:30 p.m. Feb. 6. Two days later the Kentucky Cabinet for Health Services ordered the center closed, determining that "conditions exist which constitute an immediate threat to the children" there. It suspended the center's license, pending the outcome of an investigation.

The owner, Linda Tedford, appealed the cabinet's decision, which led to Varo's review.

Varo, who heard evidence in the case at a hearing last week, concluded that "under the circumstances presented and now known, the inadequacy of this supervision must be viewed as having a direct nexus to the death of (the boy) unless or until determined otherwise."

The cause of the boy's death is still under investigation. Autopsy results were inconclusive, and the boy showed no signs of traumatic injury. The Jefferson County coroner's office is awaiting results of toxicology and microscopic tests.

In an interview Wednesday, Tedford's attorney, Oliver H. Barber Jr., said he likely would appeal the hearing officer's ruling, as well — this time in Jefferson Circuit Court.

In his 14-page decision, Varo said that the boy's mother noted that her son was in very good health.

As described in the ruling, day-care workers who saw Domanek that day said he continued to fuss, cry and kick for much of the afternoon.

About 5:30 p.m. the children took a nap, but Domanek didn't quiet down until 20 to 25 minutes later.

One of the day-care workers supervised the infant room,

where Domanek was at the time. Varo noted in his ruling that the worker was in the room the whole time, watching the children.

About 8 p.m., when the children were awakened, the worker found Domanek was not breathing and called for help. Another day-care worker, trained in cardiopulmonary resuscitation, found that Domanek was quite "stiff" and past reviving.

Although Varo found that it was clear from the evidence that a day-care worker had supervised the room, he concluded that the evidence raises "significant questions as to the adequacy of the supervision."

He noted that adequate supervision under state regulations involves a combination of "looking, listening and personally checking on the children."

"It cannot be definitively said that more aggressive care would have saved (the boy's) life," Varo wrote in his decision. "However, based on the condition of his body at the time, it was determined a problem existed, it is clear (the boy) had received inadequate care."

Barber said the ruling seems to indicate that day-care workers have to "guarantee" the health of children. And that, he said, "is not possible in life."

STATE NEWS

City hopes for Governor's approval of cleanup bill

ASSOCIATED PRESS

LEXINGTON, Ky. — City officials are eager to take advantage of a bill that offers incentives for redeveloping old, contaminated industrial sites.

Senate Bill 2, the so-called "brownfields bill," awaits only Gov. Paul Patton's signature.

Under the legislation, developers would not be required to clean old sites completely before reusing them. They would only have to demonstrate that they've contained the pollution so it's no longer a threat.

Once the work is finished and the state Natural Resources and Environmental Protection Cabinet approves it, the property owner receives a written agreement shielding the site from environmental lawsuits by the government.

Some sites may also be eligible for public money to help pay for assessment and cleanup.

Patricia Dugger, the city's director of environmental and emergency management, said the bill could benefit at least three industrial sites on the city's northwest side.

Others would like to see the bill used to clean up Angliana Avenue, home to many run-down tobacco warehouses.

Many of the structures probably wouldn't be redeveloped without the state's help, because the cost of complicated, environmentally sensitive demolitions can be greater than the land's value, said Denny Wilson, executive director of the Burley Auction Warehouse Association.

Wilson's association lobbied in Frankfort for tobacco warehouses to be added to Senate Bill 2, and also for the financial help that could be made available. At the last minute, both were.

The timing couldn't be better, Wilson said, with tobacco sales down and cigarette companies planning to buy crops directly from farmers.

"We're guessing that we're going to lose 50 or 60 percent or more of (the warehouses) after this season," he said. "We've got people who say they're hanging on for one more year, but then that's it."

With a brownfields law, some hope Angliana Avenue's moldering warehouses, rusty chain-link fences and muddy lots can be replaced by homes and restaurants, stores and offices.

"Name another spot in Lexington less than a

mile from downtown and the University where you have huge tracts of land available. It doesn't exist," said Bob Wiseman, an aide to Mayor Pam Miller.

Originally, the brownfields bill was intended for Louisville and other industrial towns along Kentucky's riverfronts. A lot of real estate in these places is occupied by padlocked factories and closed chemical plants, which aren't easy to redevelop, because of the possible health risks and danger of lawsuits.

The easiest course is to let the property sit idle and build elsewhere.

This neglect creates inner-city wastelands and contributes to suburban sprawl, said Sylvia Lovely, executive director of the Kentucky League of Cities, which pushed for the bill.

"Most people don't even know what kind of brownfields they have in their community," Lovely said. "Or if they do know, they haven't any idea what they could do with the properties."

The thinking behind the bill has already been proven to work.

In Louisville's West End, federal brownfields project five years ago turned a former chemical warehouse into the site of a planned black history museum.

Private consultants estimated the property's cleanup would cost a daunting \$30 million. But under a brownfields program, experts studied the site and put the cost at \$80,000, said Bonnie Biemer, an administrator with the Louisville Development Authority.

It was so significantly less that it made it much easier to go forward," Biemer said.

Most people don't even know what kind of brownfields they have in their community."

— Sylvia Lovely, Executive Director of the Kentucky League of Cities

PAID healthy volunteers ages 21 to 45 are needed for UK behavioral research study!

The University of Kentucky, College of Medicine, Department of Behavioral Science is recruiting healthy volunteers ages 21 to 45 to participate in research studies that measure the behavioral effects of commonly prescribed, FDA approved medications. Studies are run in a pleasant setting away from the medical campus. The program will involve 15 sessions and will take about four to five weeks to complete. Studies are run during daytime hours. Snacks, movies, video games and reading materials will be provided. Volunteers will be paid for their participation.

Please call 257-5388 for more information. **UK**

Investigators will return your call to discuss eligibility.

COMEDY OFF BROADWAY
YOUR KMART NIGHTMARE RETURNS!!

ETTA MAY


Tonight! **271-JOKE!**

Admission Includes Open Mic Night Immediately Following The Show!

National Comedienne of the Year 1999
The "Bob and Tom" Show • HBO
COMIC STRIP LIVE • OPRAH • ABC

TONIGHT ONLY! \$2.00 off with your college I.D.

Surf the Web, and discover UK Federal Credit Union!

<http://www.uky.edu/UKFCU>

RETIREMENT | INSURANCE | MUTUAL FUNDS | TRUST SERVICES | TUITION FINANCING

Attention: New faculty members and staff

Unsure about your retirement choices?

Discover the TIAA-CREF Advantage.

Call for your personal consultation

If you're a new faculty member or staff employee and not sure about your retirement plan choices, just contact TIAA-CREF.

We're the financial organization that's been dedicated for over 80 years to helping people in education and research reach their financial goals. Find out for yourself how TIAA-CREF provides:

- Easy diversification among a range of expertly managed funds
- A solid history of performance and exceptional personal service
- A strong commitment to low expenses
- Plus, a full range of flexible retirement income options

So call us for a free information package or just talk to one of your colleagues. You'll find that choosing your retirement plan provider is simple when you go with the leader: TIAA-CREF.

THE TIAA-CREF ADVANTAGE

- Investment Expertise
- Low Expenses
- Customized Payment Options
- Expert Guidance

Ensuring the future for those who shape it.™

1.800.842.2776

www.tiaa-cref.org

For more complete information on our securities products, call 1.800.842.2773, ext. 5509, for prospectuses. Read them carefully before you invest. • TIAA-CREF Individual and Institutional Services, Inc. and Teachers Personal Investors Services, Inc. distribute securities products. • Teachers Insurance and Annuity Association (TIAA), New York, NY and TIAA-CREF Life Insurance Co., New York, NY issue insurance and annuities. • TIAA-CREF Trust Company, FSB provides trust services. • Investment products are not FDIC insured, may lose value and are not bank guaranteed. © 2001 Teachers Insurance and Annuity Association—College Retirement Equities Fund, New York, NY 0104

MY BAD

Doctor operates on wrong limb

ASSOCIATED PRESS

SARANAC LAKE, N.Y. — A surgeon who mistakenly operated on a man's healthy hip five years ago has performed surgery on another patient's healthy knee, even though the leg intended for surgery was marked "Yes."

As a result, Dr. Craig DuMond will no longer practice at the Adirondack Medical Center, hospital president and CEO Chandler Ralph told the Adirondack Daily Enterprise. DuMond also relinquished his title as president of AMC's medical

staff and terminated his private practice in Saranac Lake.

In a letter issued Friday, DuMond said he was embarrassed and anguished by the incident.

After a 1996 operation, in which DuMond mistakenly pinned an elderly patient's wrong hip, AMC officials require it to be written the word "Yes" on any limb that was supposed to be operated on.

For Monday's surgery, "Yes" was correctly marked on the patient's problem knee, but DuMond operated on the other

one anyway, said AMC Public Relations Director Cheryl Breen Randall.

For all future limb surgeries, hospital staff will also be required to pull a red hockey sock over the wrong arm or leg, and write the word "No" underneath.

The hospital notified state regulatory agencies, Ralph said.

The patient in the 1996 operation filed a lawsuit that was settled out of court. Terms of that settlement and of a state-approved disciplinary action were confidential.

THE NATION

Coalition calls for end to 'tyranny'

Campaign finance reform: Proposed plan calls for limits on political donations by corporations, unions and personal contributions

ASSOCIATED PRESS

WASHINGTON — Sen. John McCain, urging colleagues to "take a risk for our country," on Monday opened two weeks of Senate debate on his bill to bring fundamental changes to how the nation finances its federal elections.

"I think the good men and women I am privileged to serve with are perfectly capable of surprising a skeptical public, and maybe ourselves, by taking on this challenge to the honor of the profession," McCain said.

Earlier, McCain, and his longtime partner on the campaign spending issue, Sen. Russ Feingold, marched to Republican and Democratic party headquarters to proclaim that it's time to end the "tyranny" of money politics.

McCain, R-Ariz., said Monday he saw a 60 percent chance that Congress will pass a major overhaul of campaign finance laws this year. Feingold, D-Wis., agreed, but said it will not be easy to hold supporters in line during the scheduled two weeks of debate and amendments in the Senate.

Every politician, Feingold said in remarks before the Democratic National Committee headquarters, "when you take \$500 million out of the system, is going to at least blink."

But he said every member of Congress is "pushed and shoved" by party leaders to come down to the GOP and Democratic headquarters to raise hundreds of millions of dollars for party coffers.

It's time to end the "tyranny of having to raise this money," he said.

Senate Majority Leader Trent Lott, R-Miss., at a news conference Monday, said he favors an alternative to the McCain-Feingold bill sponsored by Sen. Chuck Hagel, R-Neb. Hagel would limit "soft money" donations by corporations and unions to political parties rather than ban them as McCain and Feingold would do.

Lott said it is time to improve campaign finance laws, last revised in 1974, and predicted the final product "will be an amalgam of those two bills and other ideas."

McCain and Feingold, joined by 91-year-old Doris "Granny D" Haddock, who in 1999 walked across the country in support of campaign finance reform, marched from the Capitol the two blocks to the GOP party headquarters, and then walked another two blocks to the Democratic party center.

"I'm optimistic that the Democrats and more Republicans will recognize that this change is badly needed," McCain said earlier Monday. He said on CBS' "The Early Show" that he has been heartened by statements by Senate Minority Leader Tom Daschle, D-S.D., "about Democrats and their commitment to campaign finance reform."

McCain said that while a majority of senators appear to favor further limits on campaign contributions, he fears opponents will offer amendments

"that on the face look pretty good and yet are sort of like poison pills" that would kill the bill he is sponsoring with Feingold.

The first amendment proposed, by Sen. Pete Domenici, R-N.M., would eliminate direct party contribution limits to candidates who are running against wealthy individuals who are spending more than \$1 million of their own money on their election. "It's a fair-play amendment," Domenici said.

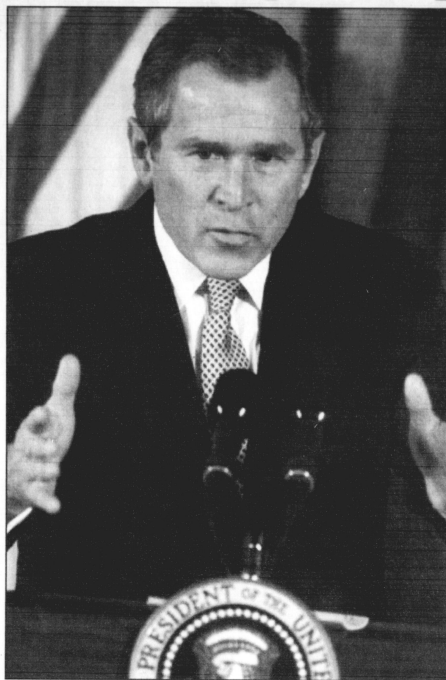
Asked to rate the bill's chances of success on a scale of 1 to 10, McCain replied: "Six."

The McCain-Feingold bill would restrict political spending and ban soft-money contributions. The alternative by Hagel would limit but not prohibit those loosely regulated donations to the parties by corporations, labor unions and individuals.

Hagel's plan includes a \$120,000 cap on soft-money donations to political parties over a two-year election cycle. The proposal would increase individual contribution limits to federal, state and local candidates.

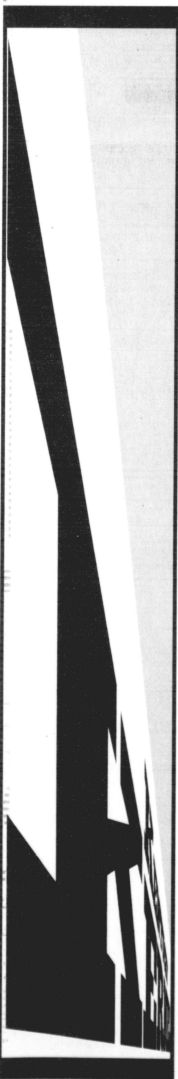
Republicans took in \$244 million and Democrats \$243 million in soft money in the 2000 election cycle, according to the Federal Election Commission.

Campaign finance bills have cleared the House in recent years but have died in the Senate because of Republican opposition. Supporters could not get the 60 votes needed to stop opposition filibusters.



President Bush favors full disclosure in campaign finance. McCain and Feingold's proposed bill would restrict political spending and ban soft-money contributions. In the 2000 election cycle, Republicans took in \$244 million and Democrats \$243 million in soft money donations.

ASSOCIATED PRESS



Think you're not going to get pregnant just because you're using Birth control?

Neither did 1 out of every 10 college-age women.*

Depo-Provera is 99.7% effective.

Depo-Provera is not only one of the most effective forms of birth control available, it's also one of the most convenient because you only have to think about it 4 times a year. And because Depo-Provera is an injectable, there's nothing to store or carry around—only you and your health care professional have to know.

Make sure you're always as protected as possible against pregnancy. To find out more about Depo-Provera and when you can start using it, talk to your health care professional.

See what Depo-Provera is all about. Go to:

www.depo-provera.com

Some women using Depo-Provera do experience side effects. The most common are irregular menstrual bleeding or spotting. Many women stop having periods altogether after a few months and some may experience a slight gain in weight. You should not use Depo-Provera if you think you might be pregnant, if you have had unexplained periods, or if you have breast cancer, blood clots, liver disease, or a history of stroke. Use may be associated with a possible decrease in bone density. Depo-Provera doesn't protect against HIV/AIDS or other sexually transmitted diseases.

Talk to your health care professional to see if Depo-Provera is right for you.

Depo-Provera
Contraceptive Injection
medroxyprogesterone acetate injectable suspension

Birth control you think about just 4 times a year.

*Hershaw SK. Unintended pregnancy in the United States. *Fam Plann Perspect*. 1996;30:24-29,46.

See the next page for important product information.

© 2001 Pharmacia & Upjohn, a division of Pharmacia

LX0009861.03 3/01

CAMPUS EVENTS FOR THE WIG-HEADED

Post-Spring Break fun



The *Tartuffe* cast takes a break from their singing schedules to pose on a chess board. The opera will be at 8 p.m. March 23 and 24 at Memorial Hall. Tickets cost \$8 for students and are available at the Singletary Center for the Arts ticket office.

By Anti Peltonen
STAFF WRITER

While Lexington may not be Miami or Panama City, UK's Music Department and the Singletary Center for the Arts are offering a variety of programs to keep students from pining into the depths of post-Spring Break depression.

The two departments have joined with other organizations and will offer a musical event on campus almost every day between March 21 and April 8. Events range from theater productions to concerts.

March 22

The Singletary Center hosts a spectacular band from Scotland. For more than 60 years the BBC Scottish Sym-

phony Orchestra has been a major force in Scottish cultural life. The orchestra has recorded extensively for a number of years in the Singletary Center. For ticket information, call 257-4929.

March 23, 24

The UK Opera Theater will perform *Tartuffe*, an opera depicting the story of a supreme hypocrite who is exposed as a true scoundrel. The story was written 300 years ago by the famous French playwright Moliere. The play has opera-style music and ensembles that are modern and different in sound, supported by lively accompaniment. The show will

start at 8 p.m. in Memorial Hall. Tickets cost \$8 for students, \$10 for faculty and staff (for \$15 for two). General admission is \$12.

March 29

This year's Faculty Jazz Concert marks the 50th anniversary of the UK banned jazz from campus. In the early '50s, most schools considered jazz a marginal, if not disreputable form of music and UK was no exception. The concert will take place in the Singletary Center at 8 p.m. Tickets cost \$5 for students and \$10 for general admission.

March 30

UK's Symphony Orchestra will perform the Overture to

"The abduction from the Seraglio," by Mozart and the "Symphony No. 37" by Brahms. Soprano Vertelle Mickens will perform. The concert takes place in the Singletary Center at 8 p.m. Admission is free.

Fine Arts Information

For more information for musical life on, and around the campus, call the UK Infoline at 257-5864 or check the School of Music web site: <http://www.uky.edu/FineArts/Music/Events>

For ticket information, call the Singletary Center Box Office at 257-4249 or check the Singletary Center web site: <http://www.uky.edu/SCFA>

THEATER WITH NEW MEAT

Plays showcase fresh talent



Freshman go to work
The Cycle Continues, a freshman showcase of six 10-minute plays, will be at 8 p.m. March 22-25 at the Briggs Theatre. Tickets are free.

By Patrick Avery
ASSISTANT SCENE EDITOR

Theater freshman Schann Mobley will find herself on stage for the first time as a UK student in a couple of days. She says it will be a humbling experience because she was a theater star in the small town she came from.

"When I came here, I was a big fish in a small pond," Mobley said.

Mobley along with 15 other newcomers to the UK Theater program will perform *The Cycle Continues*, a freshman showcase of six 10-minute plays, at 8 p.m. March 22-25 at the Briggs Theatre.

Greg Carlisle, an adjunct UK Theater faculty member and director of *The Cycle Continues*, was approached with the opportunity to direct 10-minute plays and immediately liked the format.

"I believe the format of the 10-minute plays lends itself to a showcase situation because all the roles are evenly weighted between a large group of actors," Carlisle said.

He began the process of selecting plays by reading two unpublished pieces by a friend and colleague and continued pouring over books of other playwrights. Through his readings he was able to find six he liked, though a clear theme for the show case had not presented itself.

"It has always been the case in my experience that if the people involved begin the project by choosing material about which they are passionate and to which they are committed, a unified theme will arise on its own at some point during the rehearsal process."

Carlisle next began the casting process and chose 16 actors from the new UK Theater class, a process that is important for newcomers to be cast in so they can be seen and heard.

However many of the freshman actors don't feel any pressure with upcoming performances.

"Acting, it's not anything that I get really worked up over," Mobley said. "It requires a lot of mental work, but it's just really fun for me. I don't think about it as working or something that I worry about, it's just one big ride walking around in someone else's shoes."

Lexie Kemper, a theater freshman, agrees that there is little pressure and feels the freshman class is up to the task at hand.

"I feel confident that our freshman class will hold their own," Kemper said. "We are very close, and this production is a fun extension of class."

The director also shares their confidence.

"In rehearsal, when these actors trust that they know their lines, know the actions they are playing, and treat each moment of the play as it's happening for the first time, the work they do is truly wonderful to experience," Carlisle said.

Carlisle said he feels the audience will enjoy the showcase, especially the opening play.

"In the opening piece, a customer is having trouble attempting to renew his license at the Division of Motor Vehicles. I predict most of the audience will identify with that one."

NCAA East Regionals
Tickets Buy/Sell
800-394-4849

BEYOND THE WALL!

Art, Movies, Music, Photography, Nature, Retro, Travel, Sports, Romantic, Children, Humor, Fantasy, Animals, Cultural, Japanese, Anime, Maps, Vintage, Photoscopic, Asian Art, Frames, Matted Prints, 1,000's of Postcards & much more!

377 South Limestone Street
Lexington, KY 40508
11 am - 8 pm Mon - Sat &
12 pm - 6 pm Sun.
Phone: (859) 226-9111

Depo-Provera
Contraceptive Injection
medroxyprogesterone acetate injectable suspension

Birth control you think about just 4 times a year.

Depo-PROVERA: Contraceptive injection.
Medroxyprogesterone acetate injection (Depo-PROVERA) is a hormone-based contraceptive method that is given as an intramuscular injection (a shot) in the buttock or upper arm once every 3 months (11 weeks). To continue your contraceptive protection, you should schedule your next Depo-PROVERA injection 11 weeks after the last injection. ONLY use Depo-PROVERA if you are not pregnant, are not trying to become pregnant, and are not breastfeeding. ONLY use Depo-PROVERA if you are not pregnant, are not trying to become pregnant, and are not breastfeeding. ONLY use Depo-PROVERA if you are not pregnant, are not trying to become pregnant, and are not breastfeeding.

What is DEPO-PROVERA Contraceptive Injection?
Depo-PROVERA Contraceptive Injection is a hormone-based contraceptive method that is given as an intramuscular injection (a shot) in the buttock or upper arm once every 3 months (11 weeks). To continue your contraceptive protection, you should schedule your next Depo-PROVERA injection 11 weeks after the last injection. ONLY use Depo-PROVERA if you are not pregnant, are not trying to become pregnant, and are not breastfeeding. ONLY use Depo-PROVERA if you are not pregnant, are not trying to become pregnant, and are not breastfeeding.

How effective is DEPO-PROVERA Contraceptive Injection?
The effectiveness of DEPO-PROVERA Contraceptive Injection depends on whether you follow the recommended dosage instructions. When you have a shot of DEPO-PROVERA, you are protected from pregnancy for 11 weeks. The effectiveness of DEPO-PROVERA Contraceptive Injection is 99.7% when you follow the recommended dosage instructions. The effectiveness of DEPO-PROVERA Contraceptive Injection is 99.7% when you follow the recommended dosage instructions.

What are the possible side effects of DEPO-PROVERA Contraceptive Injection?
The side effects reported most frequently by women who use DEPO-PROVERA for birth control are a change in their normal menstrual cycle. During the first year of using DEPO-PROVERA, you might have one or more of the following changes: irregular or unpredictable bleeding or spotting; a decrease or increase in menstrual bleeding; or no menstrual bleeding at all. If you have any of these changes, you should use your health-care provider's instructions. With continued use of DEPO-PROVERA, you should use your health-care provider's instructions. With continued use of DEPO-PROVERA, you should use your health-care provider's instructions.

What are the risks of using DEPO-PROVERA Contraceptive Injection?
The risks of using DEPO-PROVERA Contraceptive Injection include: an increase in the risk of osteoporosis; a decrease in the risk of cervical cancer; and a decrease in the risk of breast cancer. You should use your health-care provider's instructions.

Other risks:
• You have had liver disease.
• You have or have had blood clots, stroke, or a heart attack.
• You have had a stroke, a heart attack, or a blood clot in your leg.
• You have had a stroke, a heart attack, or a blood clot in your leg.

What symptoms may signal problems while using DEPO-PROVERA Contraceptive Injection?
Call your health-care provider immediately if any of the following problems occur following an injection of DEPO-PROVERA:
• Sharp chest pain (could be a sign of sudden death or heart attack)
• Sudden severe headache or vomiting, dizziness or fainting, problems with your sight or speech, weakness or numbness in an arm or leg, or trouble talking
• Sudden pain or swelling in one or both legs (could be a sign of a blood clot)
• Sudden severe stomach pain (could be a sign of a blood clot)

What are the possible side effects of DEPO-PROVERA Contraceptive Injection?
The side effects reported most frequently by women who use DEPO-PROVERA for birth control are a change in their normal menstrual cycle. During the first year of using DEPO-PROVERA, you might have one or more of the following changes: irregular or unpredictable bleeding or spotting; a decrease or increase in menstrual bleeding; or no menstrual bleeding at all. If you have any of these changes, you should use your health-care provider's instructions. With continued use of DEPO-PROVERA, you should use your health-care provider's instructions.

Should you use DEPO-PROVERA Contraceptive Injection?
You should use your health-care provider's instructions. With continued use of DEPO-PROVERA, you should use your health-care provider's instructions.

How often do I get my shot of DEPO-PROVERA Contraceptive Injection?
You should use your health-care provider's instructions. With continued use of DEPO-PROVERA, you should use your health-care provider's instructions.

What are the risks of using DEPO-PROVERA Contraceptive Injection?
The risks of using DEPO-PROVERA Contraceptive Injection include: an increase in the risk of osteoporosis; a decrease in the risk of cervical cancer; and a decrease in the risk of breast cancer. You should use your health-care provider's instructions.

S
Tot
KERNEL
C
P
All
VE
But
Gec
nar
The
con
tim
Dat
ren
firs
mei
obl
setl
Hol
Has
self
eng
leg
the
one
vas
glia
ers
IN
C
Sei
and
PRO
NC
Chi
ty
Ma
She
Da
Ma
Kir
NC
flec

Todd Wallace
KERNEL COLUMNIST

Defections to NBA mean parity is here to stay



All conferences are created equal: Mid-majors use experienced veterans to counter young talent of the power conferences

Gonzaga, Indiana State, Butler, Utah State, Kent State, Georgia State and Hampton — names not synonymous with the NCAA Tournament. They've caused quite a lot of commotion this March.

Why? Because for the first time in the history of the "Big Dance" the lower seeds won a remarkable 13 games on the first two days of the tournament. Plus there were about 10 other games that were remarkably close to being major upsets; just ask the Cats about Holy Cross.

So what does this all mean? Has parity finally bestowed itself between the power conferences and the mid-majors of college basketball? I believe so and the reason is not a complicated one. It is simply because of the vast early departures of collegiate or even high school players to the NBA.

Let us examine why this is

leading to the parity, but not the demise of college basketball, as I believe this has been the most exciting tournament I have witnessed thus far.

The logic behind players leaving early and college basketball becoming more equal is that power conference teams must rely more on youth, while the mid-majors rely on experience. Thus, talented, but young freshmen and sophomores that play in the ACC or SEC face fundamentally sound and experienced, but not as talented players from the MAC, Colonial or Sun Belt conference.

As a result the outcomes are much more unpredictable. However, the collegiate players leaving early does more than just put younger players on the floor, it also affects recruiting.

This is where I believe the parity truly comes from. For instance it is not the Kentuckys, North Carolinas or Dukes that

get hurt by this because they always recruit the best players. Most of the time — young or old — their talent is unparalleled on the college level and the mid-majors just cannot compete.

Although for the mid-level programs of the major conferences it is a different story. As players leave for the NBA it truly hurts those schools because the top schools steal the recruits that would usually be going there.

Duke is a great example of this. If Corey Magette, Elton Brand and William Avery had not gone pro do you really think the Blue Devils would have landed the services of Chris Duhon, Jason Williams, Mike Dunleavy and Casey Sanders, who are all McDonald's All-Americans that would not have gone to a school to sit the bench?

Instead these players would have attended a Wake Forest or

Virginia and helped them to win their first round game and not be upset. The same comparison can be made for the majority of powers in college basketball like UCLA, Kentucky, North Carolina and even Florida.

Next year Florida is getting three of the top recruits in the nation. These recruits would probably not have committed to Florida if Mike Miller and Donnell Harvey did not take their services to the NBA. Instead, those two went pro and the three recruits are going to play for Billy Donovan, not Georgia or Arkansas, who stumbled in the first round.

So what can we do about it now you might ask? I say nothing; this tournament is almost over. But the bottom line is that with all these kids going pro, parity has now fallen upon college basketball and the mid-major conferences have proven they can play with the big boys. Thus, the tournament selection committee needs to recognize this and put more of the little guys in the "Big Dance."

Well past midnight

Junior guard Dan Dickau and the rest of the Gonzaga Bulldogs have advanced to the Sweet Sixteen for the third straight season, thus shedding their Cinderella moniker. Top players who decide to leave school early have contributed to the rise of Gonzaga and other teams from mid-major conferences.

FILE PHOTO

STUDENT TRAVEL

London.....\$364
Paris.....\$426
Amsterdam.....\$478
Tokyo.....\$609



student airfares
BUDGET
rail passes
STA TRAVEL

800.777.0112
www.statravel.com



aaaaaaaaaah!

Relaxing at home with a good book can earn you college credits this summer. Don't let opportunity go down the drain.



Room 1 Frazee Hall - 257-3466

<http://www.uky.edu/ISP>

It's just getting started!



This fire will spread through classrooms, burn the dorms, engulf campus and scorch the city of Lexington.

We set it, but you'll add the fuel.

Sponsored by SDC and the Kentucky Kernel

IN BRIEF

Sportsbytes

Seven swimmers set to compete in NCAAs

The UK men's swimming and diving team will send a record seven athletes to the NCAA Swimming and Diving Championships at the University of Texas A&M in College Station, Texas.

The Cats begin competition March 22 and conclude March 24. For the men, Macon White, Shaun Zitani, Roger Watkins, David Tweedie, Aaron Workman, Clayton Moss and Aaron Kirkpatrick will compete at the NCAA Championships.

White automatically qualified at the SEC Championship

meet in the 200-meter freestyle and will swim in the 500-meter freestyle. In addition, he will compete as part of the 400 and 800 freestyle relays.

Zitani will swim in seven total events including four relays.

UK should benefit from qualifying in multiple relays, which award more points than individual events. Moss, a UK diver and the 2001 SEC one-meter champion, also qualified for the NCAA meet in the three-meter, allowing him to compete in both events. Kirkpatrick qualified in both events, as well.

The UK women's swimming team finished 39th at the

NCAA Swimming and Diving Championships in Long Island, N.Y. last weekend. Georgia won the meet followed by Stanford and Texas.

Melissa Olson finished 36th in the 400-meter individual medley and placed 25th in the 200-meter individual medley. Jaime Siegele concluded her competition with the 100 freestyle and finished 31st.

Siegele qualified in the consolation heat at No. 15 in the 50-meter freestyle on Thursday. She finished third in the event at the Southeastern Conference Championships. Later that evening Siegele moved up four places to finish 11th in the event.

Bawono earns top SEC honor

UK men's tennis senior Edo Bawono was named the Southeastern Conference Men's Tennis Player of the Week on Tues-

day by the league office.

Bawono leads the UK tennis team as its No. 1 singles player and earned the honor after notching two wins over ranked opponents in the last week.

This is the first time the senior from Jakarta, Indonesia has received the honor.

Bawono is the No. 45 player in the nation and anchors a UK squad with a 10-5 record during spring play after posting an impressive 13-2 record during the fall.

The Cats have managed a 7-8 team record against a competitive schedule and travel to No. 39 South Carolina to face the Gamecocks on Friday March 23.

UK returns home to host the No. 29 Florida Gators on Sunday March 25 at the Hillary J. Boone Tennis Complex at 2 p.m. following the UK women's tennis team's match against LSU at 11 a.m.

Bathroom ghosts need Buddhists...

Newspaper uses monks to exorcise a ghost

HONG KONG — With stories of spirits spreading through the office and some employees scared to work nights, an English-language newspaper called in two Buddhist ghostbusters to try to restore calm.

The robbed monks chanted, sprinkled water and rang a bell Tuesday during their traditional cleansing ceremony at the South China Morning Post.

Editor Robert Keatley and some staff members bowed at a small altar set up near the reception desk.

The monks declined comment to a reporter, who was kept outside.

Keatley's secretary, Winnie Tam, said the half-hour ritual had been organized to allay any fears among staff.

Some women at the Post have been going to the bathroom in pairs since the newspaper's food editor, when she was washing her hands on March 8, heard a voice calling her name but no one was there.

"I am not normally that superstitious," said the food editor, Susan Jung of California.

If it hits Australia, we all get a coo...

MIR could win all Americans a free taco

IRVINE, Calif. — If Mir hits the bull's-eye, everyone wins a taco.

That's what Taco Bell is promising 281 million Americans if the core of the Russian Mir space station hits a floating target the fast food company will anchor 10 miles off the Australian coast.

"I don't know what the odds are," said Laurie Gannon, a spokeswoman for the Irvine-based company.

"Call Vegas." The 135-ton Mir is expected to come crashing back to Earth on Friday, ending 15 years in orbit.

Russian controllers expect as much as 25 tons of Mir's wreckage will survive re-entry to hit a remote area of the Pacific Ocean well east of Australia.

One expert said the odds the station's core will come down on Taco Bell's 40-by-40 foot vinyl target — emblazoned with the company's logo and the words "Free Taco Here!" — are slim to none.

"They're not going to lose any money at all," said William Ailor, director of The Aerospace Corp.'s Center for Orbital and Reentry Debris Studies.

Taco Bell estimates it would have to spend less than \$10 million to give everyone in the U.S. a coupon for a free taco. Just in case, the company has purchased an insurance policy to cover the cost.

-Source: AP Wire

Compiled by: Jenny Robertson



IN OUR OPINION

Bible and science meld in museum

Florence is the new home of a creationist center that teaches the Biblical beginning of the world

If you thought the sight of your neighbor's unowned lawn was an eyesore, consider yourself lucky. Some Florence residents are planning to receive 40-foot-long dinosaurs in their neighborhood.

Answers in Genesis Ministries, a fundamentalist Christian organization, broke ground last Saturday for the Creation Museum and Family Discovery Center, a \$14 million museum that will focus on the Biblical version of creation.

Despite a battle with neighbors to preserve the site that the museum will be built on, the group received zoning clearance last year.

Among the attractions: life-sized dinosaurs. The group has already commissioned several sculptures, including a 40-foot-long Tyrannosaurus Rex, in hope of drawing in crowds.

"Kids love dinosaurs, parents love dinosaurs; so they will definitely be a feature of the museum to get people in," Ken Ham, executive director of Answers in Genesis, said in Sunday's Herald-Leader.

Ham formerly worked for a similar project in California called the Institute for Creation Research.

He is among a group of "scientific creationists" who seek fossils and geological evidence that will prove the Earth was created in six 24-hour days.

We respect the group's right to believe in this hypothesis and to share their beliefs with others.

Answers in Genesis only lead to more questions, and absolute truth is very hard to find.

The Kernel does not claim to know how the world came to be or what physical evidence supports these different views. We also realize that, despite Ham's belief that the theory of evolution conflicts with Christianity, they can peacefully co-exist.

Textbooks across the country hesitate to address the issue because of zealotry on both sides. We know that, as residents of Kentucky, we are living on the buckle of the Bible Belt.

We only hope that evolution will receive the same amount of tolerance and respect.

John Burgoon

GUEST COLUMNIST

From Generation X to Generation 'Why?'

Generation X: If you are between 18 and 22 years old, then you might have an older brother or sister who is part of this generation of slackers and unmotivated drug-addicted, seemingly hopeless, somewhat computer savvy 26-35 year olds.

They were the last remnants of American children who still enjoyed playing with action figures, dolls, Hot Wheels and perhaps the occasional Atari video game.

They would go to the local arcade after school, ride their bikes around the neighborhood on Friday nights and perhaps go camping, fishing or have some make-believe adventure with a group of friends outdoors.

Generation X grew up just before personal computers became essential staples of the American household. They grew up among Reaganism, hair bands, a burgeon-

ing television channel known as MTV (when it only played videos) and "Star Wars." Almost immediately, sociologists and the like labeled Generation X the generation that didn't give a damn. The first true generation that entered adolescence without the threat of a large-scale war, Generation X was utterly unmotivated. Just look at how many of them still live at home, seemingly unable for some mysterious socioeconomic reason to break out into the real world and enter true adulthood.

But Generation X will go down in historians' books as tame compared to "Generation Y" or "Why?" The children of late baby boomers and early Generation Xers, Generation Y was immersed in cynicism and pessimism, music videos, erratic Hollywood blockbusters, sex, sex and more sex, from day one.

O.J. Simpson's trial, Clinton's scandals and recently the presidential election debacle all add to the aura of pessimism and pragmatism that has settled over Generation Y. They have come of age in front of "Beavis & Butthead," "South Park" and the reality shows of the late 1990s.

Kids and young adults today are so far removed from young adults of a few generations ago that anthropologists might as well categorize them as another species. Whereas Generation X is categorized by their lack of effort or motivation, Generation Y is filled with a constant and unjustified anger. They are a violent generation. I can't help but think that the majority of young men out there, from ages 14 to 21 would not hurt a small animal if given the opportunity. The digital age has reared these children on elec-

CONTACT US

E-mail

Send us your letters and comments by e-mail. Hey, we love the Net and we know you do too. So send your thoughts to dialogue@kykernel.com

Snail mail

Send your letters via the postal service for only \$34 — it's that cheap. Send your thoughts to 035 Grehan Building Lexington, KY 40506-0042

Length & style

Letters to the editor are to address previously printed editorials and columns. They should be approximately 250 words long.

Guest opinions should start new dialogue and not address other editorials or columns. Guest opinions should be no longer than 600 words.

Include this info

Include your name and major classification (for publication).

Please include a phone number and/or e-mail address for verbal confirmation.

The Kernel reserves the right to edit any submitted materials.

Joshu Goebeler

KERNEL COLUMNIST

Kids: Just say no?

A line of commercials has been running on television lately.

They portray an upper-middle class household with a child, parents and grandparents sitting at the dinner table.

The commercial depicts the child as unavoidably adorable. The catch at the end of the commercial is something to the effect of, "Kids, isn't it time that you had some?"

This particular commercial was sponsored by a religious group that feels we should "be fruitful and multiply."

While I believe that it is best to respect others beliefs, I also hold strongly to the idea that my rights end where others' begin.

Thus, my argument is that encouraging people to have children is socially irresponsible and could potentially end in disaster.

According to the United Nations, the world's population is expected to grow to 9.3 billion by the year 2050. This is three times higher than in 1950 when the population was 3 billion.

Why is the population growing at nearly exponential rates?

Much of it can be attributed to the fact that there are very few lions left on the planet to devour people and few large scale wars.

The only thing on earth to keep the population of humans in check (other than natural disaster and disease) are humans themselves.

The largest rate of population growth is occurring in developing countries.

It is interesting that one of George W. Bush's first acts as president was to cut U.S. support for much needed family planning services, maternal health care and HIV/AIDS prevention in overseas countries.

The policy which he used to achieve this end is known as the "global gag rule."

While the administration said that they wanted the gag rule re-imposed because they do not support using federal funds for abortions, the gag rule effectively denies crucial aid to foreign non-governmental organizations that use their own money to advocate for or against legal abortion.

This is about as irresponsible as a commercial that encourages people to continue in the current vein of over-population.

Thomas Malthus is credited as the first to offer the doomsday scenario of population growth.

Malthus' first theorem was known as the Dismal Theorem. The Dismal Theorem states that "if the only check to population is misery, the population will grow until it is miserable enough to check its growth."

With this quotation Malthus expressed his belief that the world's population was going to continue growing until the population outstripped food production, and starvation and misery became the end result.

Malthus' critics held firm to the conviction that improvements in technology would keep up with the population growth and people would continue to live comfortably.

Malthus answered this argument with his Utterly Dismal Theorem.

His Utterly Dismal Theorem states that "if the only check to population is misery, the result of any improvement is ultimately to enable a larger population than before to live in misery, so that resource-improvement actually increases the sum of misery."

Malthus asserts his idea that improvements in technology will allow more people to exist on the planet.

Unfortunately, the population will eventually outstrip the advancement of technology and then more people will be on the planet to experience misery and starvation.

While Malthus has been wrong in his time-line predictions, we are not able to disprove his Utterly Dismal Theorem.

This is because we have yet to see if technology will eventually reach a peak that population surpasses.

I hope more debate on this issue is born in the future. There are so many ethical questions that are raised.

Maybe it is socially irresponsible to have a child instead of feeding one already born, nearing death from starvation and suffering from lack of medical care.

While the idea of everyone on the planet deciding against having children is nonsensical and non-productive for the human race, I do feel that zero population growth is something that we should be moving toward as a species.

Kernel Columnist Joshu Goebeler is a Sociology and English Senior. His views do not necessarily reflect those of the Kernel.

Guest Columnist John Burgoon writes for the Daily Trojan (U. Southern California). His views do not necessarily represent those of the Kernel.

Guest Columnist John Burgoon writes for the Daily Trojan (U. Southern California). His views do not necessarily represent those of the Kernel.

Guest Columnist John Burgoon writes for the Daily Trojan (U. Southern California). His views do not necessarily represent those of the Kernel.

Guest Columnist John Burgoon writes for the Daily Trojan (U. Southern California). His views do not necessarily represent those of the Kernel.

Guest Columnist John Burgoon writes for the Daily Trojan (U. Southern California). His views do not necessarily represent those of the Kernel.

Guest Columnist John Burgoon writes for the Daily Trojan (U. Southern California). His views do not necessarily represent those of the Kernel.

Guest Columnist John Burgoon writes for the Daily Trojan (U. Southern California). His views do not necessarily represent those of the Kernel.

Guest Columnist John Burgoon writes for the Daily Trojan (U. Southern California). His views do not necessarily represent those of the Kernel.

Guest Columnist John Burgoon writes for the Daily Trojan (U. Southern California). His views do not necessarily represent those of the Kernel.

Guest Columnist John Burgoon writes for the Daily Trojan (U. Southern California). His views do not necessarily represent those of the Kernel.

Guest Columnist John Burgoon writes for the Daily Trojan (U. Southern California). His views do not necessarily represent those of the Kernel.

WORLD NEWS

Violence continues in Israel



Orthodox Jews from the volunteer group "True Kindness" search for remnants of body parts in an Israeli settler's car after it was hit in a drive-by shooting by suspected Palestinian gunmen on a West Bank road near the Jewish settlement of Nave Daniel Monday. The driver, Baruch Cohen, was fatally wounded, lost control of his car and hit an oncoming truck. Following the shooting, the Israeli army reimposed its closure of Bethlehem. Under Jewish law, every effort has to be made to collect even the smallest body parts for a proper Jewish burial.

ASSOCIATED PRESS

No end in sight: After six months of fighting 430 people are dead; both sides blame the continued violence on each other

ASSOCIATED PRESS

JERUSALEM — In the most serious attacks against Israel since Ariel Sharon took power, a Jewish motorist was slain Monday in a roadside shooting, and 60 automatic rifles were stolen from a kibbutz where the security chief was killed.

Sharon — who pledged to restore Israel's security when he became prime minister on March 7 — was in Washington on Monday to emphasize his position that nearly six months of violence must end before any peace negotiations will begin.

"The Palestinian Authority is deepening its involvement in incitement, violence and terror," Sharon's office said in a statement Monday evening. "In the past 24 hours, a series of murderous terrorist acts against the civilian population have been perpetrated."

The Israelis and Palestinians in recent days resumed high-level security contacts that had broken down during nearly six months of fighting. But the latest violence, combined with the sharp recriminations, has again raised tensions.

Sharon and his Cabinet ministers have escalated their rhetoric in recent days, holding

Palestinian leader Yasser Arafat and his security forces directly responsible for attacks.

"My finger is pointed at one man only — Yasser Arafat," said Israel's Defense Minister Binyamin Ben-Eliezer, who visited the scene of the roadside shooting near Bethlehem in the West Bank. Arafat is not "giving clear orders to reduce the violence."

Sunday night, Palestinians fired mortar shells from the Gaza Strip into Israel, lightly wounding a soldier. Palestinian militants have unleashed mortar attacks on Jewish settlements in Gaza on several occasions, but Sunday's fire marked the first time they hit Israel proper since the violence began in September.

Also, Israeli troops lobbed stun grenades into a crowd of several hundred Palestinian women protesters marching past an Israeli checkpoint near the West Bank city of Ramallah. The army said soldiers were responding to stone throwers, but journalists at the scene said there was no rock throwing.

Several women suffered minor injuries, including prominent Palestinian spokeswoman Hanan Ashrawi, who had a

small cut on her leg. "We will not accept violence, brutality and siege. We will not acquiesce," Ashrawi said afterward.

The slain Israeli motorist was identified as 58-year-old Baruch Cohen, a resident of the West Bank settlement of Efrat. Several bullets penetrated his front windshield, which was covered with blood. His attackers fled to nearby Bethlehem, Israeli officials said.

Jewish settlers throughout the West Bank and Gaza Strip have been targeted by Palestinian gunmen since fighting broke out almost six months ago. To date, 430 people have been killed, including 352 Palestinians, 59 Israeli Jews, and 19 others.

After nightfall Monday, an Israeli soldier was shot and lightly wounded in a drive-by shooting in the Jordan River Valley, the army said.

In the hills near Israel's northern border with Lebanon, the body of Yitzhak Kabartov, the 54-year-old head of security at Kibbutz Manara, was found in a riverbed near the kibbutz, a collective farming community.

Israeli security officials said the killing appeared to be political, but northern district

police spokesman Boaz Goldberg said the motive was not clear.

Kabartov had been missing since Thursday night, and kibbutz members also discovered 60 automatic rifles had been stolen from the kibbutz armory. Security officials suspect that Palestinians may have seized Kabartov, forced him to open the armory and then killed him.

Jewish villages along the Lebanese border have stockpiles of weapons available to residents to defend themselves against attack.

After Monday's roadside shooting, the army reimposed its blockade around Bethlehem and other areas. Dirt barriers were erected to block Palestinians from using back roads.

Israel has periodically tightened and loosened the blockades, depending on the level of conflict, since the fighting began. Palestinians have complained bitterly, calling it collective punishment that prevents them from traveling in and out of their communities.

Also, Israel's Finance Minister Silvan Shalom said the government would continue to withhold funds that were previously transferred to Arafat's Palestinian Authority under interim agreements. He said the decision was aimed at "making clear that life cannot go on as usual when it is they who are perpetrating the terrorism."

You Have The Clothes, We Have The Money. Trade Ya!



Plato's Closet® is a new retail store in Lexington that buys and sells gently used, brand name teen apparel and accessories! We're looking for gently used, brand name clothing and accessories such as: **ANY BRANDS: T-SHIRTS, JEANS, SHORTS, SLACKS, COATS, SHOES, HATS, BAGS, JEWELRY, AND MORE.** Sell your cool clothing, outdoor shoes and accessories and get cash on the spot for all items accepted. Accepting Girls size 14 to Junior size 15. Guys size 14 to 38 waist. Clothing must be in good condition and current style. Check us out!

PLATO'S CLOSET

Hours: Mon-Fri: 10-8 Sat: 10-6 Sun: 12-5
2500 Nicholasville Rd. (in front of K-Mart, next to Kinko's) **278-6660**

G Love & SPECIAL SAUCE

Yeah, it's THAT EASY

ATA

TONIGHT! TICKETS \$15

DOORS OPEN AT 8 P.M.

367 EAST MAIN 231.7263

www.lynaghs.com Since 1981

LYNAGH'S

• IRISH PUB & MUSIC CLUB •

HOME OF THE O'ROUND®

Wed. 3/21 **The Patnkillers**

ROBERT BRADLEY'S BLACKWATER SURPRISE

Thur. 3/22

Fri. 3/23 **CHUCK PROPHET & ANNA FERMIN'S TRIGGER GOSPEL**

Sat. 3/24 **CATAWAMPUS UNIVERSE**

388 Woodland Avenue - Lexington, Kentucky - 255-6614/255-1292

University of Kentucky

Dance Ensemble Spring Concert

Guest Choreographer: Gaspard Louis

Sunday, March 25, 2001 at 3:00 pm

Singletary Center for the Arts Recital Hall

MOMIX

Dance? Theater? Imagination!

Presented by Student Activities Board

Next Stage Committee

Saturday, March 24, 2001

Lexington Opera House 8 P.M.

Call 257-TICS (8427) or TICKETMASTER

Welcome Back from Spring Break!!

CALL 258-2039

High speed internet access expected by Fall 2001!

FEATURING: fully furnished 2 & 4 bedroom apartments

- ON BUS ROUTE
- PRIVATE BEDROOMS
- INDIVIDUAL LEASES
- ALARM SYSTEMS
- FREE PARKING
- FULLY EQUIPPED KITCHEN
- WASHER & DRYER
- FITNESS CENTER/REC ROOM
- SWIMMING POOL/HOT TUB
- TENNIS, VOLLEYBALL & BASKETBALL
- COMPUTER LAB, COPIER & FAX AVAILABLE

UNIVERSITY COMMONS

APARTMENTS

845 RED MILE ROAD

mgratlex@qx.net
www.capstone-dev.com

Mon - Fri 9-6
Sat 10-4 Sun 1-5