

exhaust-steam enters the condenser by the pipe just above the water-jet. The injection water and steam come into actual contact and assume a common temperature. The air-pump in this case is vertical (which is desirable) and contains three large circular valves. These are made of hard rubber, are held fast in the

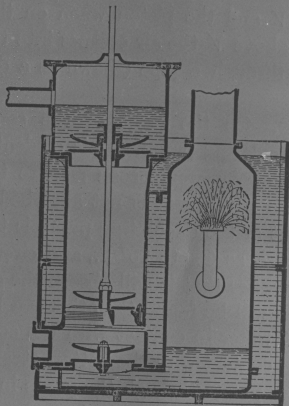


FIG. 7

center, and are bent up in a saucer shape with an excess of pressure on the bottom side. The duty thrown on one valve should be distributed among several valves. The lowest is the foot-valve, the one in the piston is a bucket-valve, and the top one is the delivery-valve. Raising the piston reduces the pressure in the