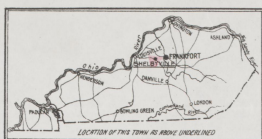
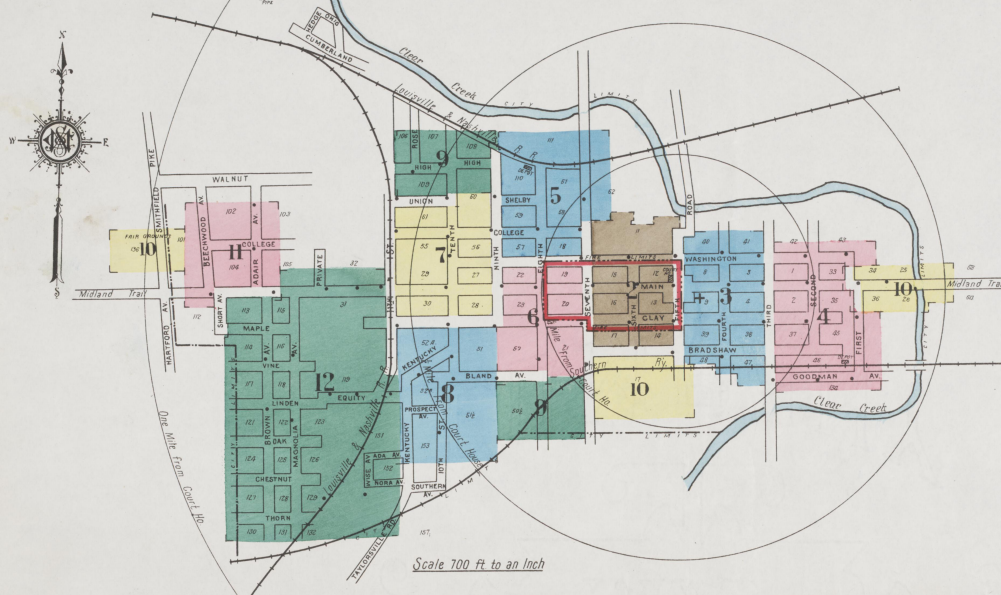
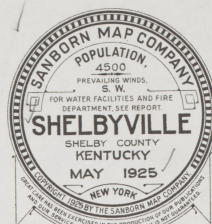


AUG 20 '25



KEY

- FIRE WHEEL AIR ROOF
- FIRE WHEEL AIR ROOF
- FIRE WHEEL AIR ROOF
- FRAME PARTITION
- OPENING WITH IRON DOOR
- STANDARD
- SHUTTERS
- WINDOW 1ST STORY
- WINDOW 2ND STORY
- WINDOW 3RD STORY
- WINDOW 4TH STORY
- WINDOW 5TH STORY
- WINDOW 6TH STORY
- WINDOW 7TH STORY
- WINDOW 8TH STORY
- WINDOW 9TH STORY
- WINDOW 10TH STORY
- WINDOW 11TH STORY
- WINDOW 12TH STORY
- WINDOW 13TH STORY
- WINDOW 14TH STORY
- WINDOW 15TH STORY
- WINDOW 16TH STORY
- WINDOW 17TH STORY
- WINDOW 18TH STORY
- WINDOW 19TH STORY
- WINDOW 20TH STORY



Water Facilities:
 Water Works owned by Kentucky Utilities Co.
 Supply from Clay Creek.
 Gravity & direct pressure system 36,865 gallon reservoir, Worthington centrifugal pump 5x6 420 S.F.M. Double duplex pump 5x6 300 P.M. Reilly compound duplex 6'x5' 500 G.P.M. 42,000 gallon stand pipe elevated 237' above business section.
 High pressure system: McGowan compound duplex pump, 8'x10' 150 G.P.M.
 11 Miles of 6" & 8" water pipes
 70 double hydrants.
 Average daily consumption, 83,000 gallons.
 Pressure at Clark Mt. 62 lbs domestic, 120 lbs fire.

Fire Dept.
 Chief & 2 men fully paid, 8 men partly paid.
 One station, fully equipped.
 One American 14 frame triple combin. pump, capacity 120 G.P.M. 100 gallon chemical tank, 2000 chemical hose, 1000 ft. G.P.L. hose.
 One front engine, chemical hose & air truck, 50 gal. chem. tank, 2000 ft. chem. hose in reserve, 500 ft. 2 1/2" hose, 2000 ft. 3" c.r.l. hose in reserve, electric alarm system, 7 boxes, also bell and engine, house roof.
 Streets macadamized.
 Grades mostly light.
 Public Lights Electric.

INDEX

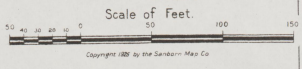
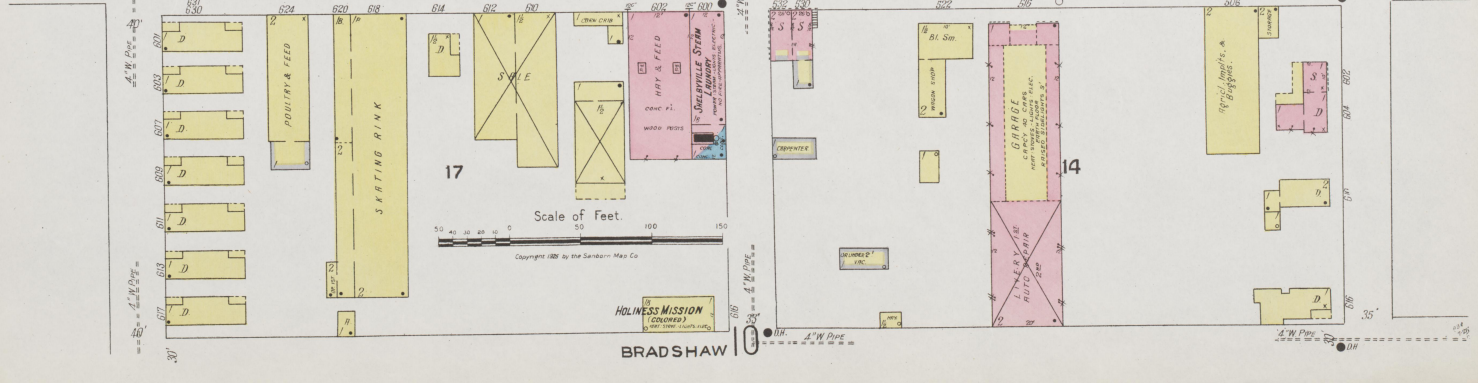
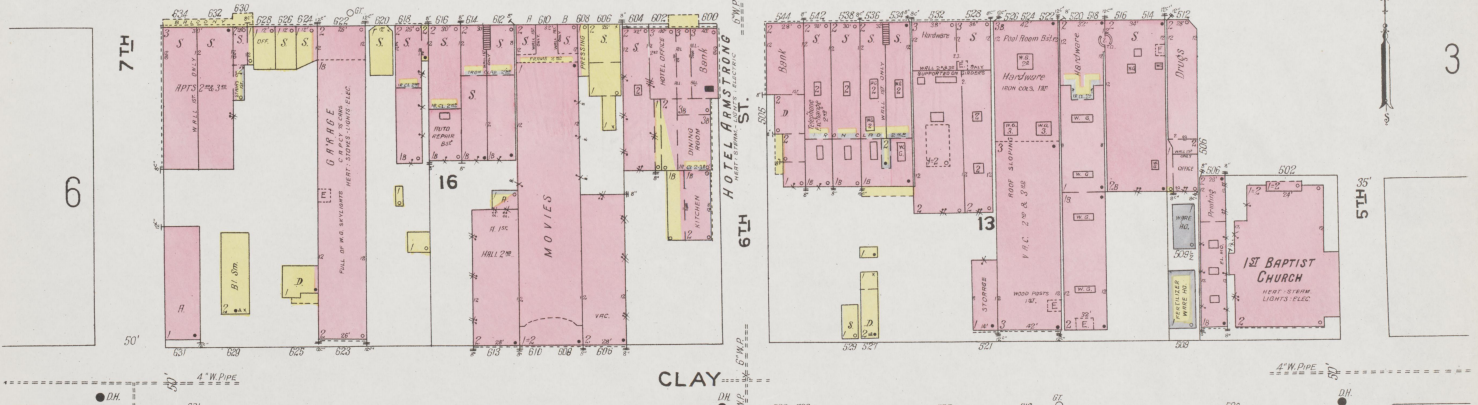
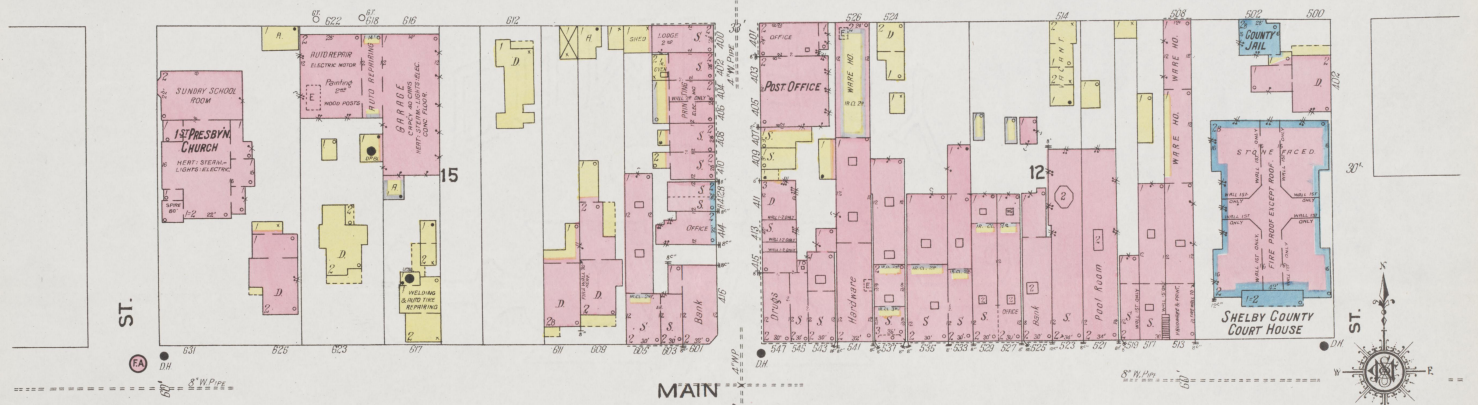
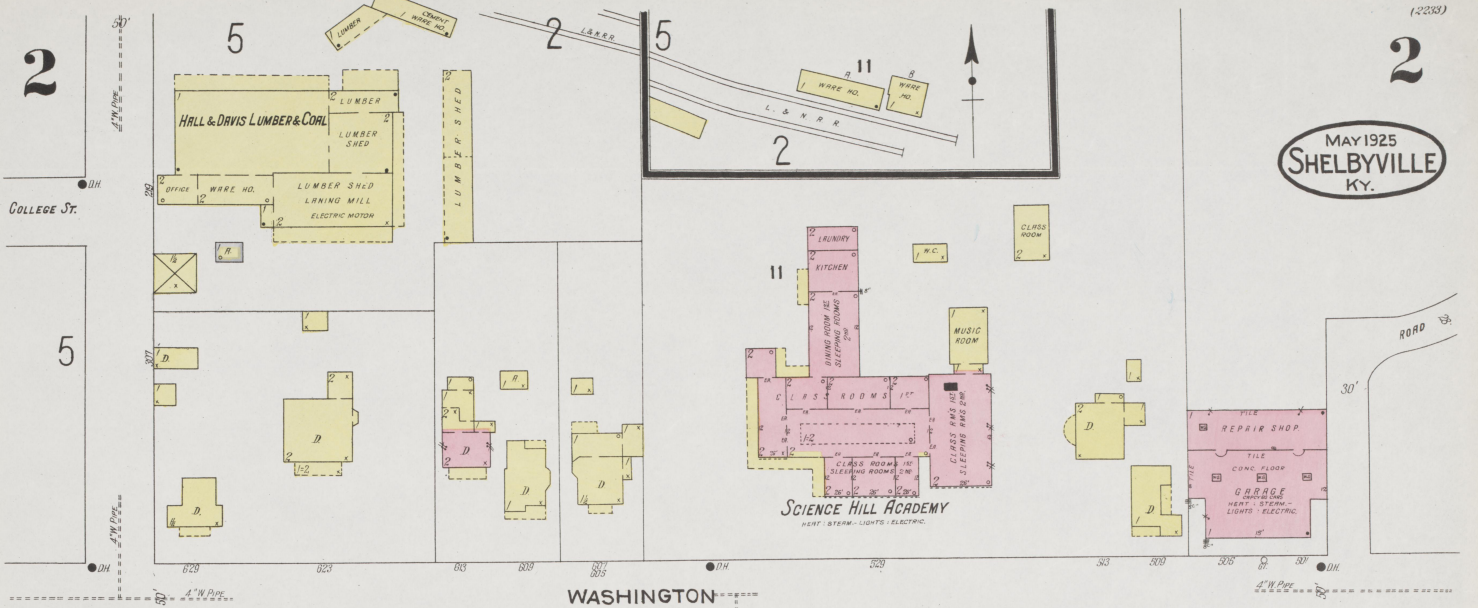
STREETS		SPECIALS	
Ada Ave., 8 & 12	Adair Ave., 11	Adair Ave., 11	Adair Ave., 11
Beechwood Ave., B	Bland, B	Bland, B	Bland, B
Bradshaw, B	Brown Ave., B	Brown Ave., B	Brown Ave., B
Cadiz, C	Chestnut, C	Chestnut, C	Chestnut, C
Clay, C	College, C	College, C	College, C
Crescent Ave., E	Equity, E	Equity, E	Equity, E
Eighth, E	Eleventh, E	Eleventh, E	Eleventh, E
Fifth, F	Fifth, F	Fifth, F	Fifth, F
Goodman Ave., G	High, G	High, G	High, G
Kent, G	Kentucky, G	Kentucky, G	Kentucky, G
Linden, G	Linden, G	Linden, G	Linden, G
Magnolia Ave., M	Main, M	Main, M	Main, M
Ninth, M	Ninth, M	Ninth, M	Ninth, M
Prospect Ave., P	Prospect Ave., P	Prospect Ave., P	Prospect Ave., P
Railroad Right of Way, R	Railroad Right of Way, R	Railroad Right of Way, R	Railroad Right of Way, R
Rose, R	Rose, R	Rose, R	Rose, R
Second, S	Seventh, S	Seventh, S	Seventh, S
Shelby, S	Shelby, S	Shelby, S	Shelby, S
Short Ave., S	Sixth, S	Sixth, S	Sixth, S
Smithfield Pike, S	Taylorville Road, S	Taylorville Road, S	Taylorville Road, S
Tenth, S	Tenth, S	Tenth, S	Tenth, S
Third, S	Third, S	Third, S	Third, S
Thorn, S	Thorn, S	Thorn, S	Thorn, S
Union, S	Union, S	Union, S	Union, S
Vine, S	Vine, S	Vine, S	Vine, S
Washington, S	Washington, S	Washington, S	Washington, S
West, S	West, S	West, S	West, S
Wilmington, S	Wilmington, S	Wilmington, S	Wilmington, S
Woodman, S	Woodman, S	Woodman, S	Woodman, S
York, S	York, S	York, S	York, S
Zoo, S	Zoo, S	Zoo, S	Zoo, S
Baptist Church (Colored), Clay St., B	Bethel A. M. E. Church, College St., B	Bethel A. M. E. Church, College St., B	Bethel A. M. E. Church, College St., B
Bond, A. M., Prizing Houses, L	Burford, W. L., Hogshead Tobacco Storage, L	Burley Tobacco Growers Co-operative Ass'n, Storage Warehouses, &c., L	Burley Tobacco Growers Co-operative Ass'n, Storage Warehouses, &c., L
Carnegie Library, C	Catholic Church, C	Centenary Methodist Episcopal Church, C	Chowning Lumber Co., C
Christian Church, C	Church of Christ, C	Climax Roller Mills, C	County Court House and Jail, Road Department, Garage, &c., C
Daisy M. Saffall Memorial Hospital (Colored), D	Daisy M. Saffall Memorial Hospital (Colored), D	Daisy M. Saffall Memorial Hospital (Colored), D	Daisy M. Saffall Memorial Hospital (Colored), D
Elk's Club House, E	Elk's Club House, E	Elk's Club House, E	Elk's Club House, E
Farmers' Loose Leaf Tobacco Warehouse, F	Fire Department, F	First Baptist Church, F	Presbyterian Church, F
Fullenwider Oil Co., F	Fullenwider Oil Co., F	Fullenwider Oil Co., F	Fullenwider Oil Co., F
Glacier Ice Co., G	Globe Loose Leaf Tobacco Warehouse, G	Graded Public School, G	Gray, T., Tobacco Hanging, G
Hall & Davis, Lumber and Coal, Coal Yard, H	Hanna, W. C., Tobacco Hanging, H	High School, H	Holmes Mission (Colored), H
Hotel Armstrong, H	Hotel Armstrong, H	Hotel Armstrong, H	Hotel Armstrong, H
Kentucky Utilities Co., Gas Plant, &c., K	Kings Daughter's Hospital, K	Kings Daughter's Hospital, K	Kings Daughter's Hospital, K
Liggett & Myers, Loose Leaf Tobacco W.H., L	Long, S. M., & Son, Climax Rolling Mills, L	L. & I. R. R. Depots, L	L. & N. R. R. Depots, L
Miller & Bond, Lumber Yard, M	Miller & Bond, Lumber Yard, M	Miller & Bond, Lumber Yard, M	Miller & Bond, Lumber Yard, M
Planters' Loose Leaf Warehouse, P	Planters' Loose Leaf Warehouse, P	Planters' Loose Leaf Warehouse, P	Planters' Loose Leaf Warehouse, P
Post Office, P	Post Office, P	Post Office, P	Post Office, P
Reynolds, R. J., Tobacco Co., Prizing House, R	Reynolds, R. J., Tobacco Co., Prizing House, R	Reynolds, R. J., Tobacco Co., Prizing House, R	Reynolds, R. J., Tobacco Co., Prizing House, R
Saffall, Daisy M., Memorial Hospital (Colored), S	St. James Mission P. E. Church, S	School House (Colored), S	School Hill Academy, S
Shelby College, S	Shelbyville A. & M. Ass'n, Fair Grounds, S	Steam Laundry, S	Skinner, C. W., & Son, Coal and Feed, S
Skinner, S. R., Tobacco Warehouse, S	Southwestern Tobacco Co., Warehouse, &c., S	Standard Oil Co., Warehouse, S	Stoll Oil Co., Warehouse, S
U. B. F. Hall (Colored), U	U. B. F. Hall (Colored), U	U. B. F. Hall (Colored), U	U. B. F. Hall (Colored), U
Wakefield, Bright & Wakefield, Hogshead Tobacco Storage, W	Walters & Lang, Tobacco Warehouse, W	Walters & Lang, Tobacco Warehouse, W	Walters & Lang, Tobacco Warehouse, W

* Indicates only one side of Street shown

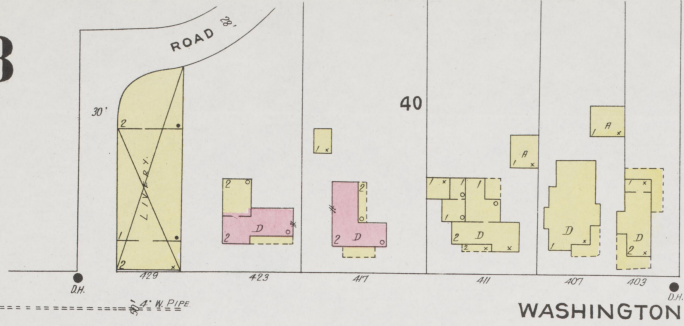
2

2

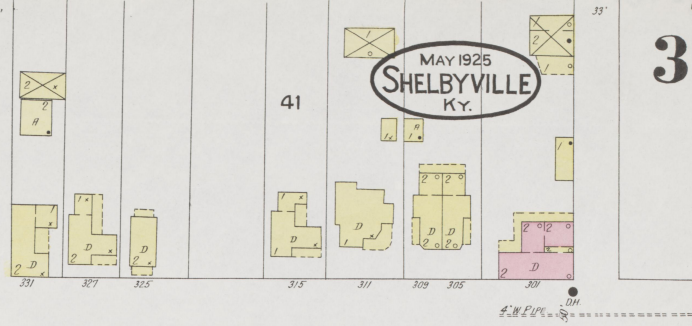
MAY 1925
SHELBYVILLE
KY.



3

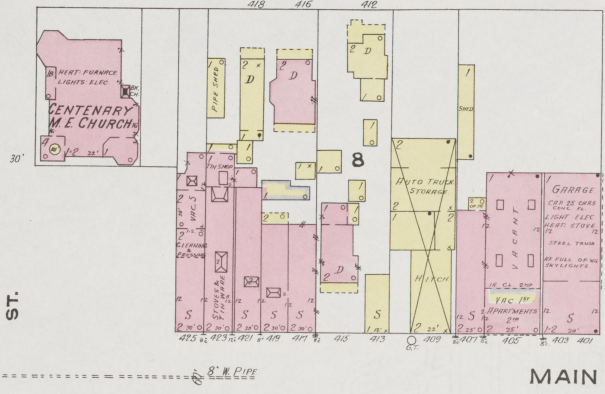


3



WASHINGTON

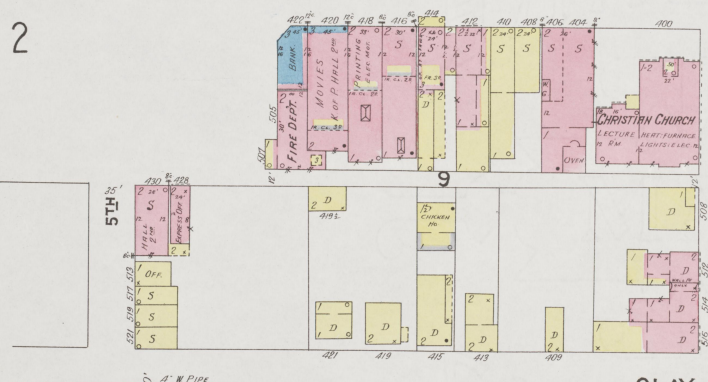
WASHINGTON



MAIN

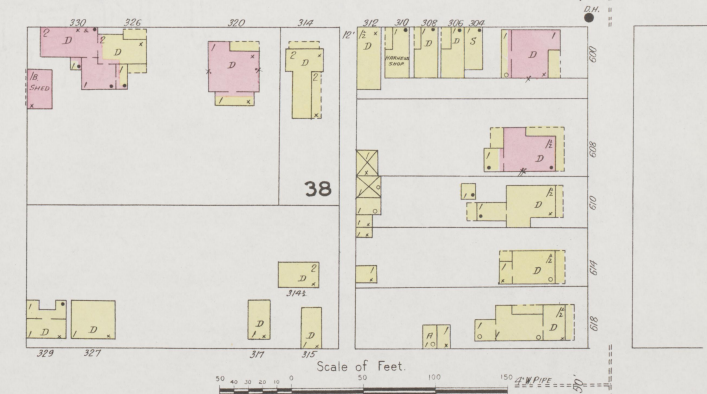
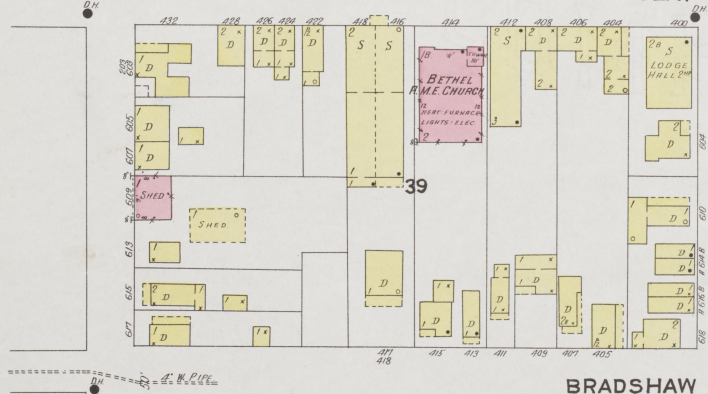
MAIN

2



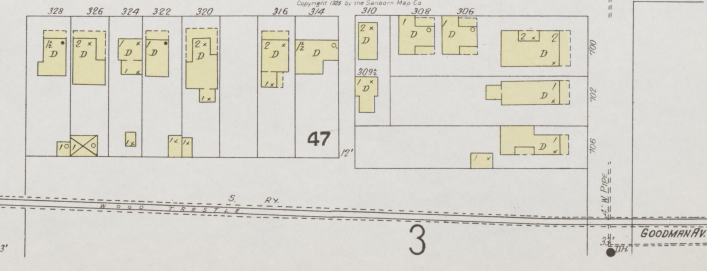
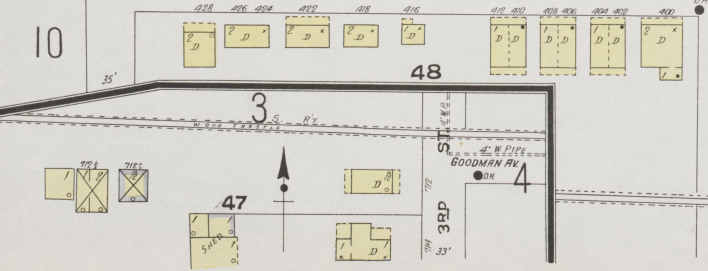
CLAY

CLAY



BRADSHAW

BRADSHAW



GOODMAN AV

GOODMAN AV

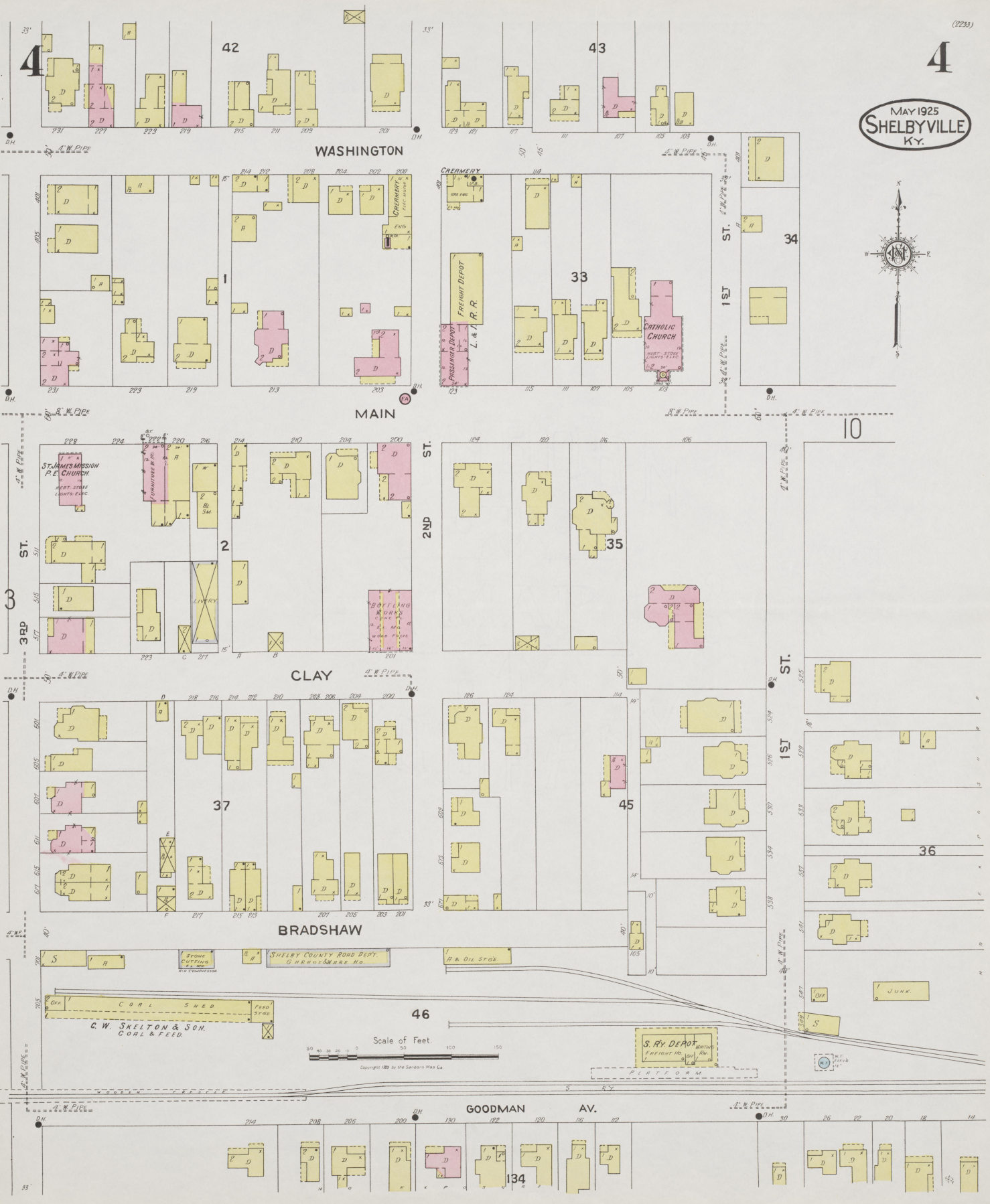
MAY 1925 SHELBYVILLE KY.



Scale of Feet. 0 50 100 150

Copyright 1925 by the Commercial Map Co.

MAY 1925
SHELBYVILLE
KY.



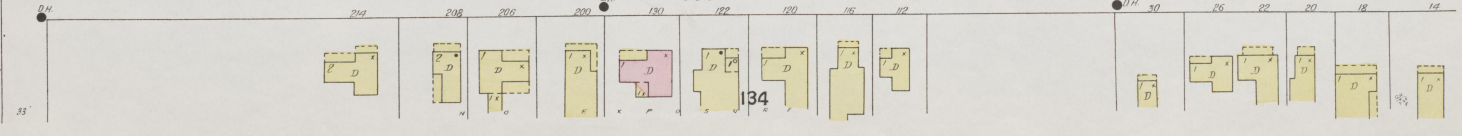
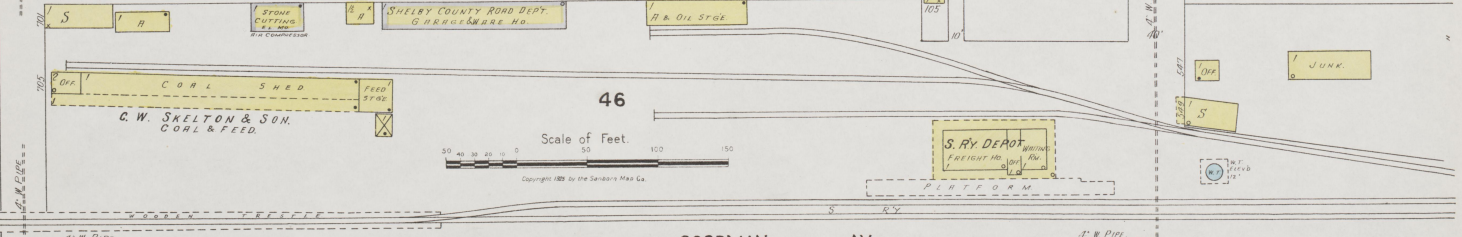
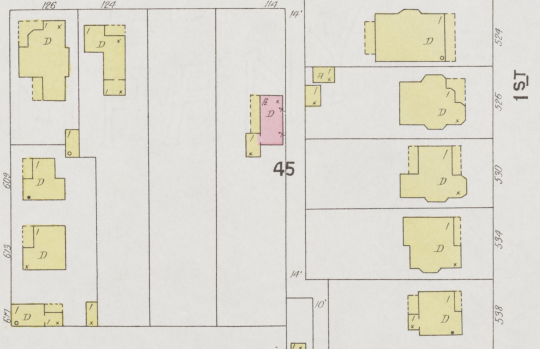
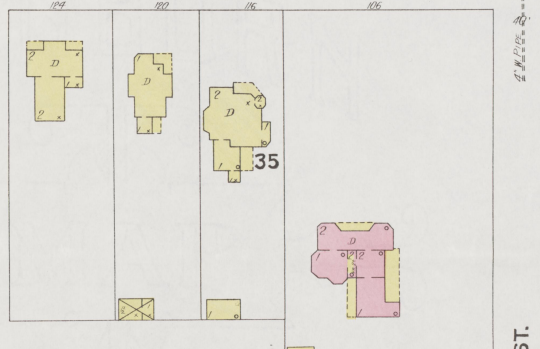
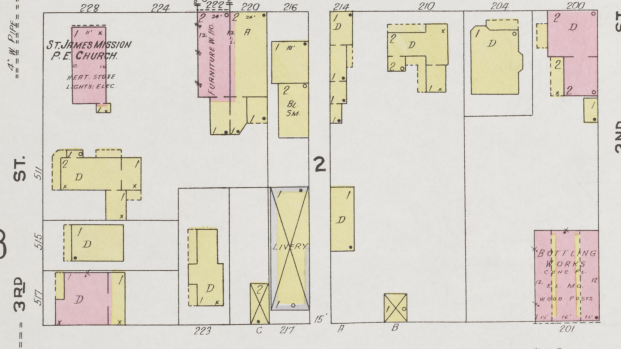
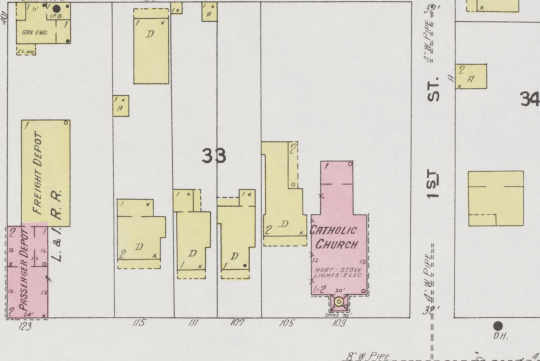
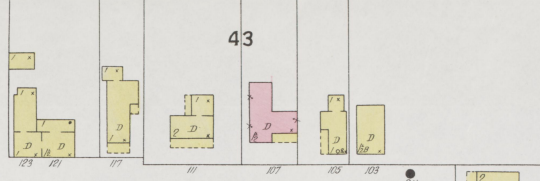
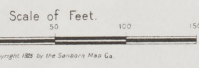
WASHINGTON

MAIN

CLAY

BRADSHAW

GOODMAN AV.



5

MAY 1925
SHELBYVILLE
KY.

5

R. R. RIGHT OF WAY

L. & N. R. R. PASSENGER DEPOT

HARDWARE IMPALT
WARE HO.

FULLENWIDER OIL CO.

9

110

111

62

STANDARD OIL CO.

ST.

9TH

SHELBY

ST.

8TH

61

CHOWNING LUMBER CO.

ST.

7TH

HILL & DAVIS COAL YARD

CLIMAX ROLLER MILLS
SMITH & SON PROPS
WOODS & SON CO. LUMBER
WOODS & SON CO. LUMBER
WOODS & SON CO. LUMBER
WOODS & SON CO. LUMBER

L. & N. R. R. FREIGHT DEPOT

GLASS RM.
SHELBY COLLEGE
GRADED PUBLIC SCHOOL
HEAT - STEAM LIGHTS - ELEC.

58

LUMBER WARE HO.
LUMBER SHED
LUMBER WARE HO.
LUMBER WARE HO.
LUMBER WARE HO.
LUMBER WARE HO.

11

ST.

9TH

COLLEGE

57

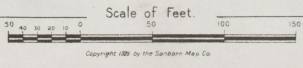
18

GRANLIE
LIBRARY



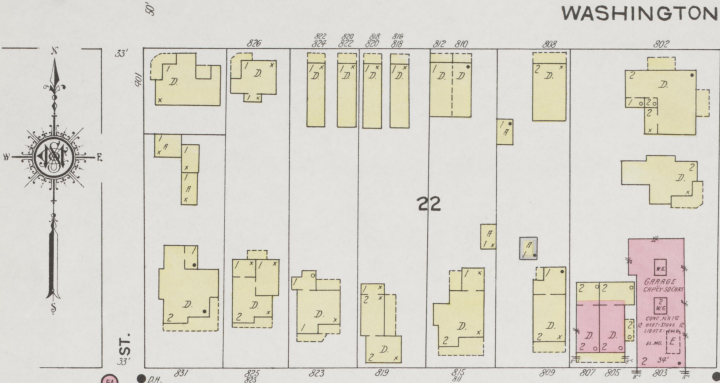
WASHINGTON

6



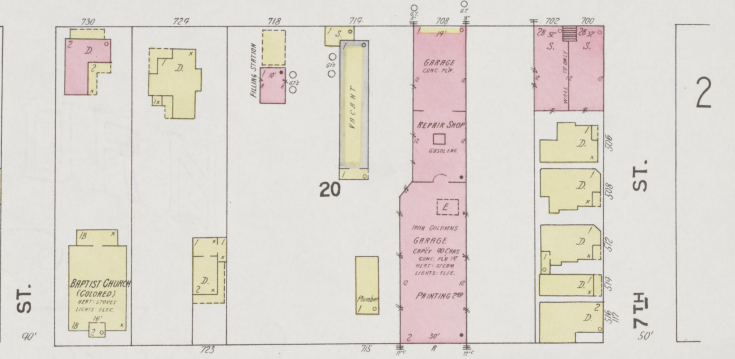
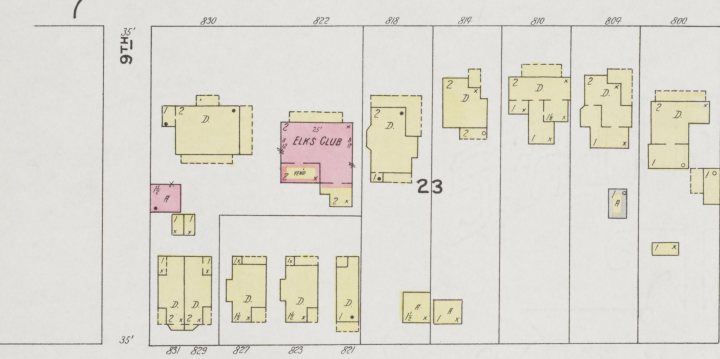
6

6 (22.1)



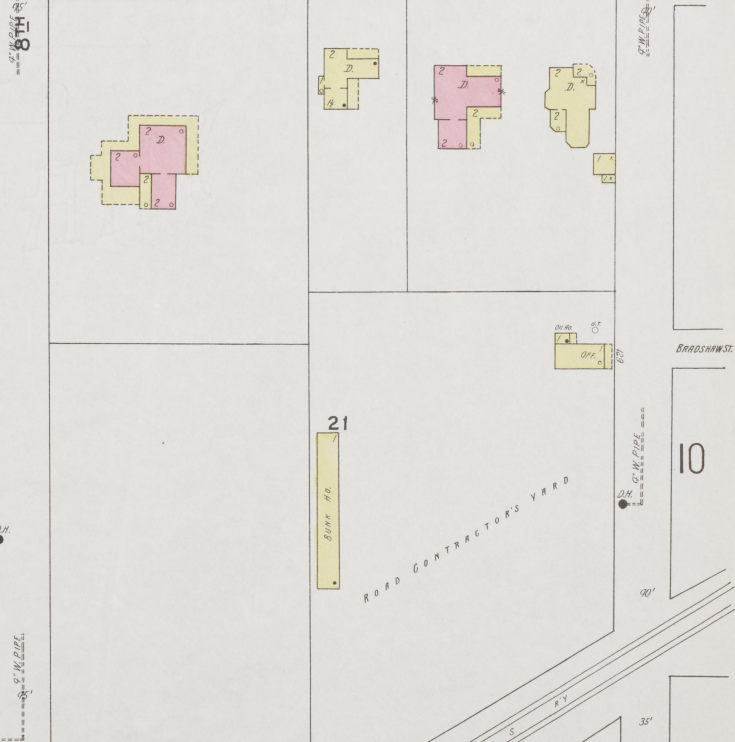
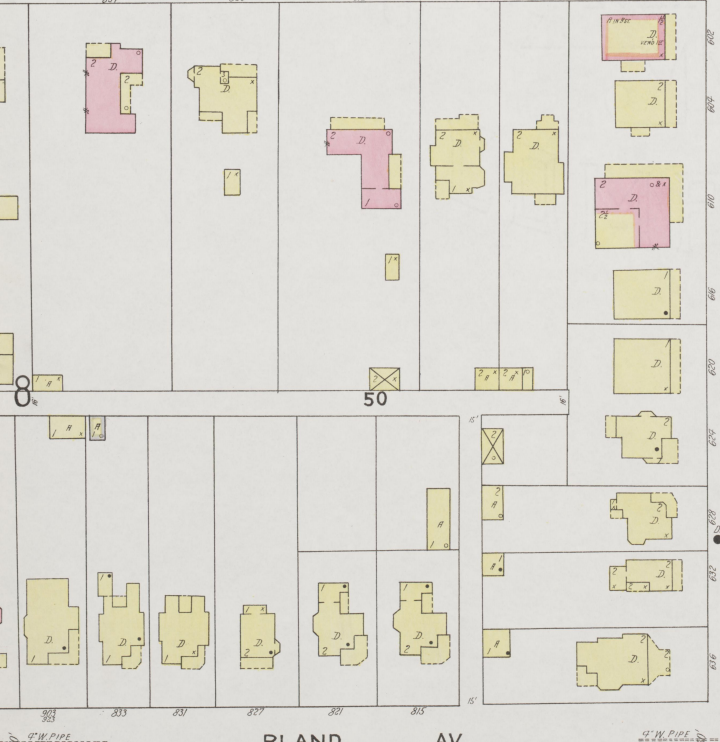
MAIN

MAIN



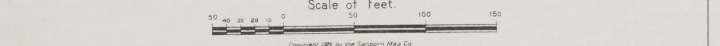
CLAY

CLAY



BLAND AV.

BLAND AV.



Copyright 1925 by the Sanborn Map Co.

9

9

7

9

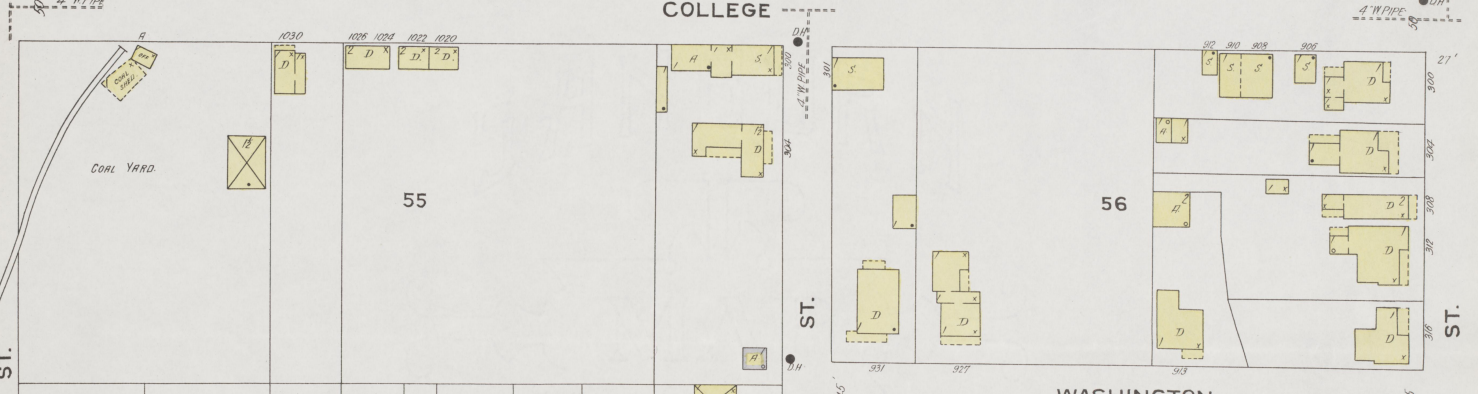
7



11TH ST.

10TH ST.

10TH ST.



11TH ST.

10TH ST.

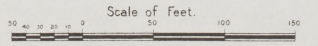
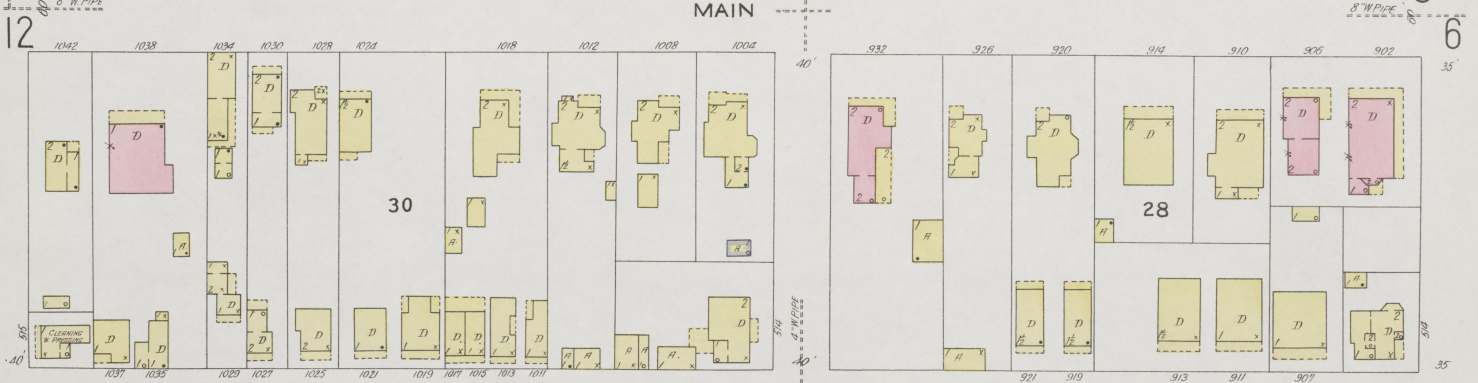
9TH ST.



12

8

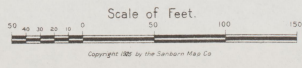
6



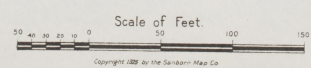
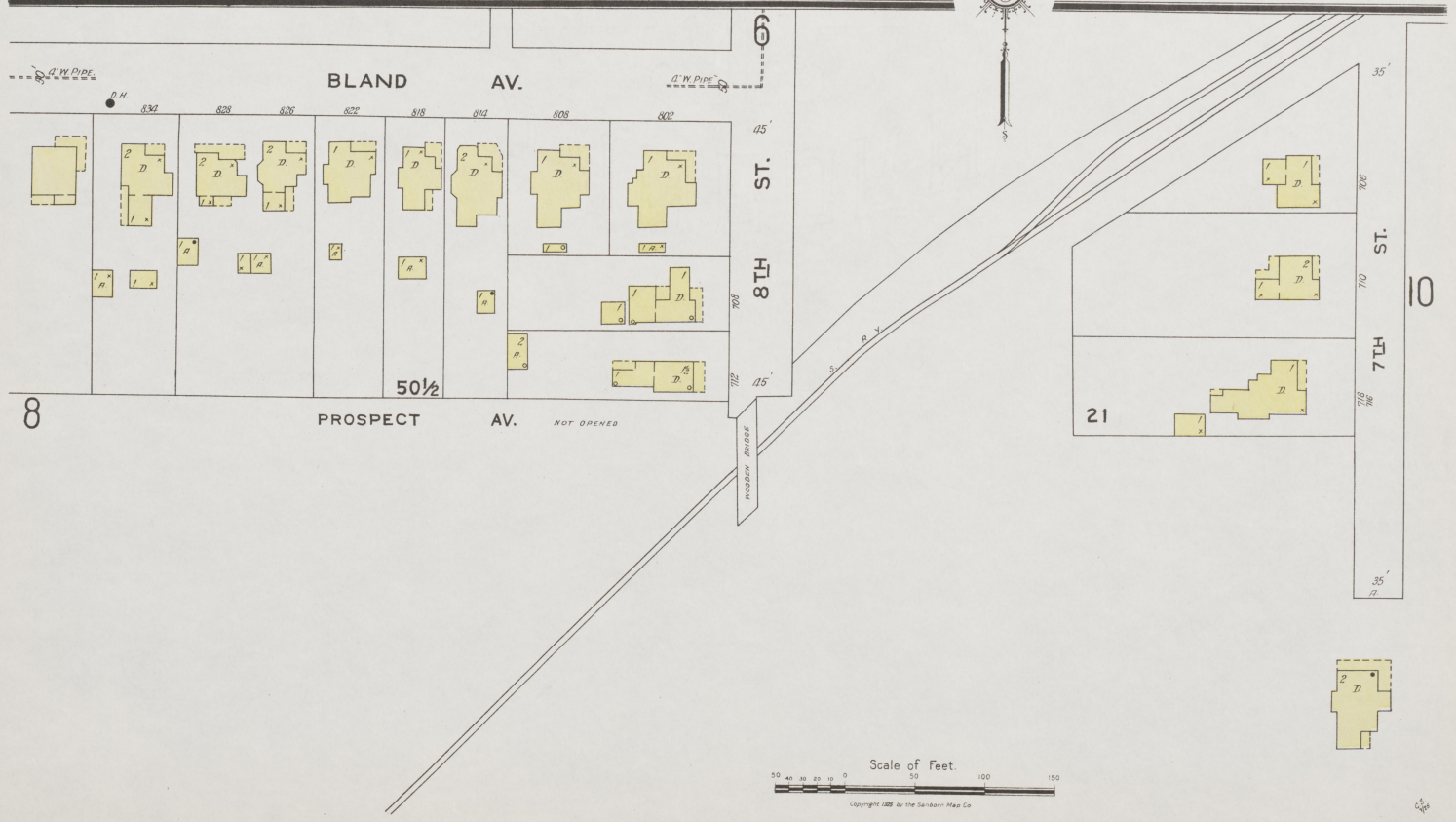
Copyright 1925 by the Searns Map Co.



MAY 1925
SHELBYVILLE
KY.



Copyright 1925 by the Sanborn Map Co.



10

10

3

BRADSHAW

STOLL OIL CO.

SCHOOL
(COLORED)
LAND

UBF HALL
(COLORED)

LUMBER W. HD.

COAL BIN

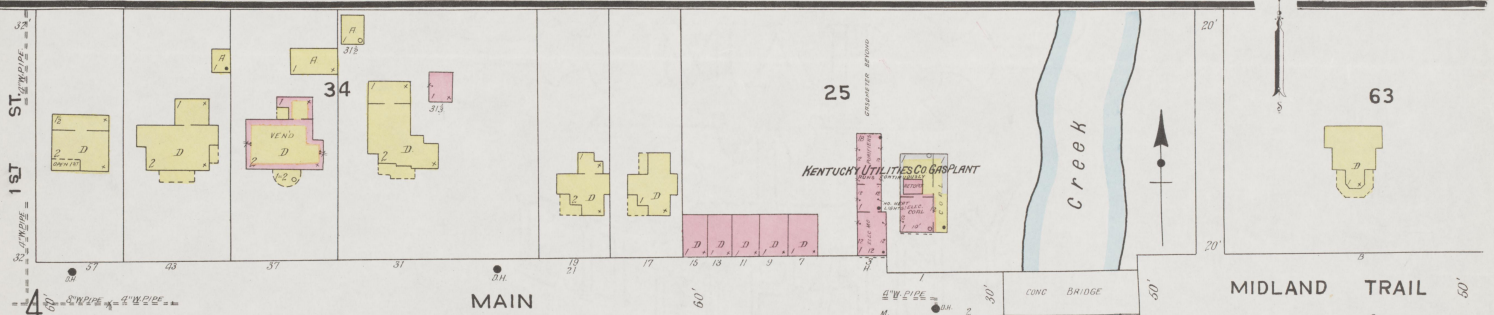
R. R. RIGHT OF WAY

MAY 1925
SHELBYVILLE
KY.

6

9

17

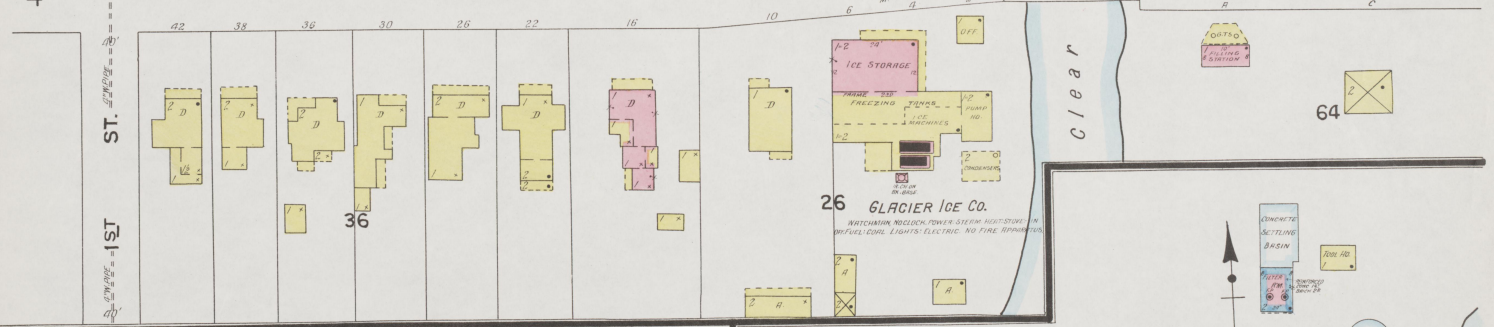


MAIN

MIDLAND TRAIL

Creek

Clear



GLACIER ICE CO.

64

SHELBYVILLE A&M ASSN. INC.
FAIR GROUNDS

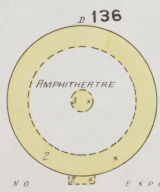
SCALE 100 FT. TO AN INCH

Scale of Feet

Copyright 1925 by the Standard Map Co.

KENTUCKY UTILITIES CO.
PUMPING STATION & ELECTRIC LIGHT
PLANT

RUN CONTINUOUSLY
POWER SYSTEM NO HEAT FUEL COAL - LIGHTS
ELECTRIC - NO FIRE APPARATUS
NO EXPOSURES ANY SIDE



DRUM HALL

SMITHFIELD

101

135

CONCRETE
SECTING
BRIN

WATERMOUNT
COPY
WOODS

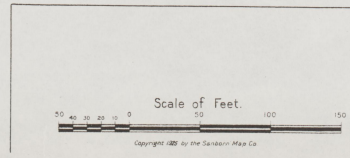
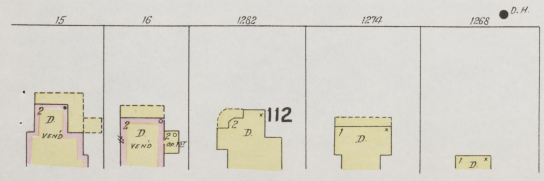
COAL SHED

Clear Creek

11

11

MAY 1925
SHELBYVILLE
KY.



12

(2:13)
47

SCALE 100 FT. TO AN INCH

MAY 1925
SHELBYVILLE
KY.



Scale 100 Ft. to One Inch.

Copyright 1925 by the Sanborn Map Co.