

2

SECOND

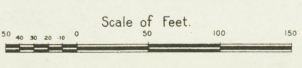
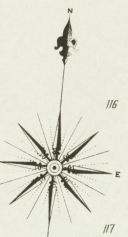
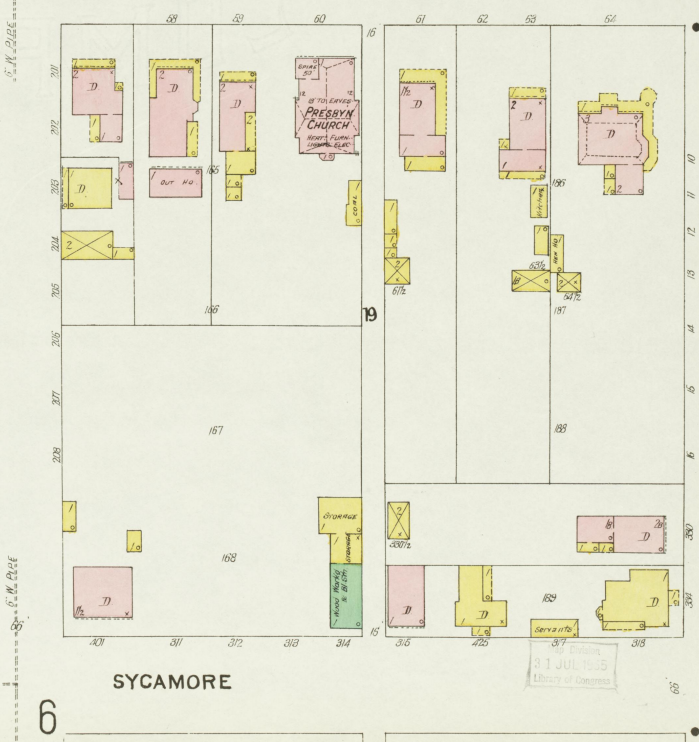
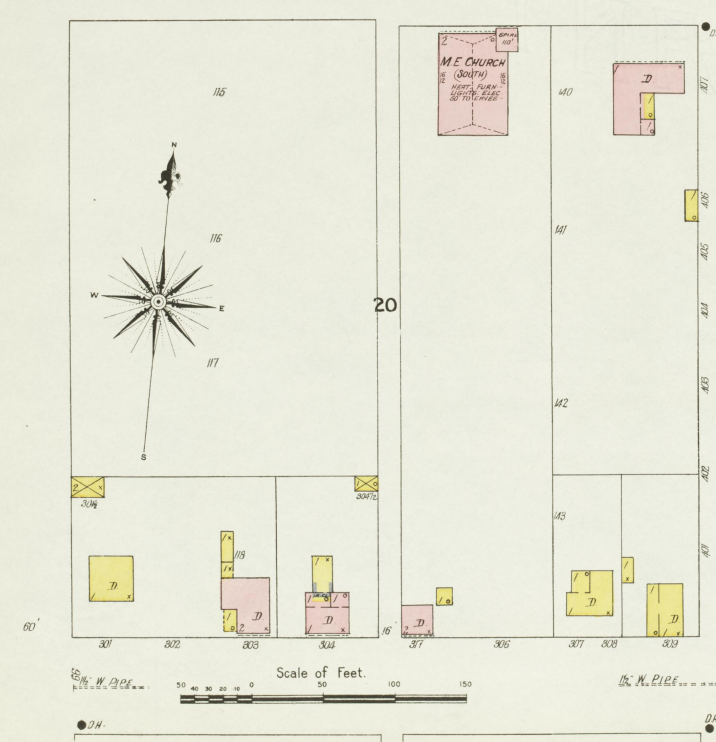
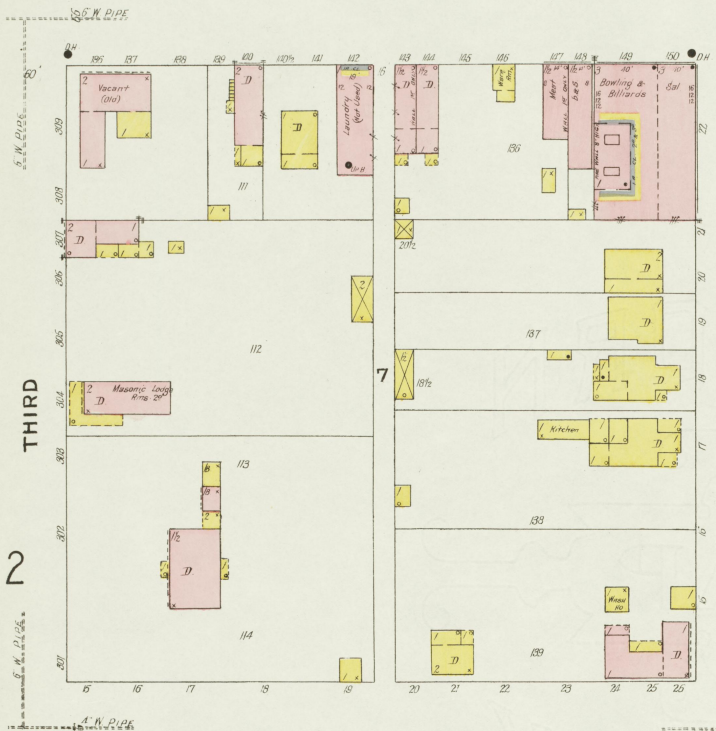
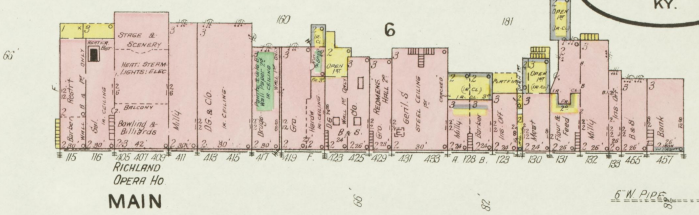
THIRD

5

D.H. 399

MAY 1908
CARROLLTON
KY.

NO EXPOSURE TO OHIO RIVER



JUL 1905
Library of Congress

66

KENTUCKY

66

NORTHERN

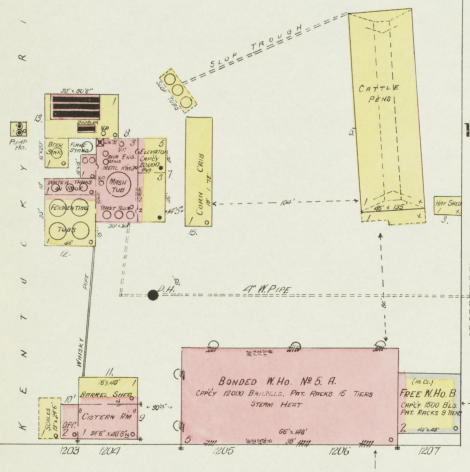
66

CLAY

66

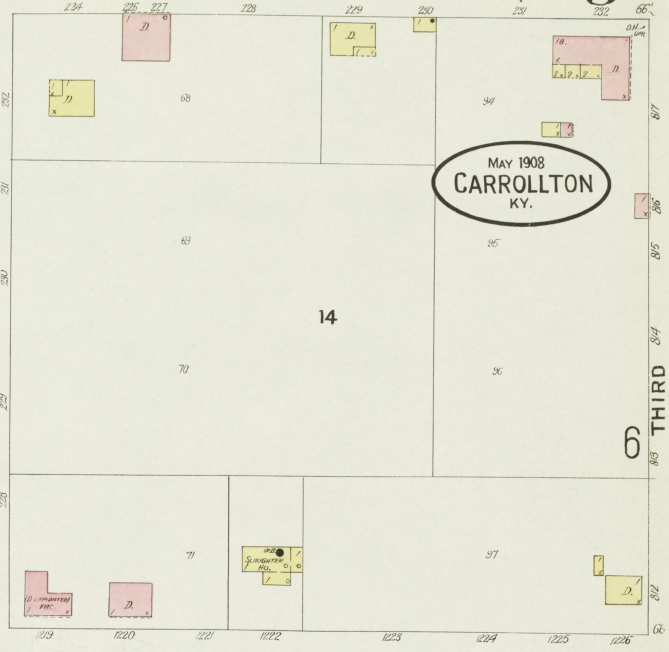
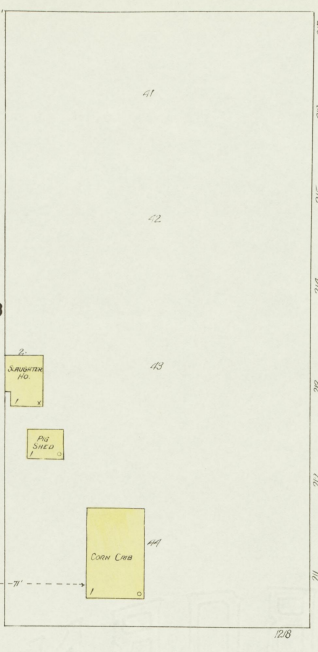
JETT BROS. DISTILLING CO.

Registered Distillery No. 5-6th Dist.
Carroll Co. Ky.
Product: Bourbon & Rye Whiskies -
MASH CAPACITY 254 BUS - YIELD 4-25 -
RUN 2 MONTHS PER YEAR -
NIGHT WATCHMAN, NO CLOCK - FUEL COAL & COBS -
LIGHTS KEROSENE LANTERNS -
HEAT STOVE IN OFFICE, STEAM IN N. 110'S
WATER SUPPLY 2 DEEP WELLS - PUMP AT
KENTUCKY RIVER & CITY WATER -
TO HAVE 80' H. HOSE AT EACH W.P.



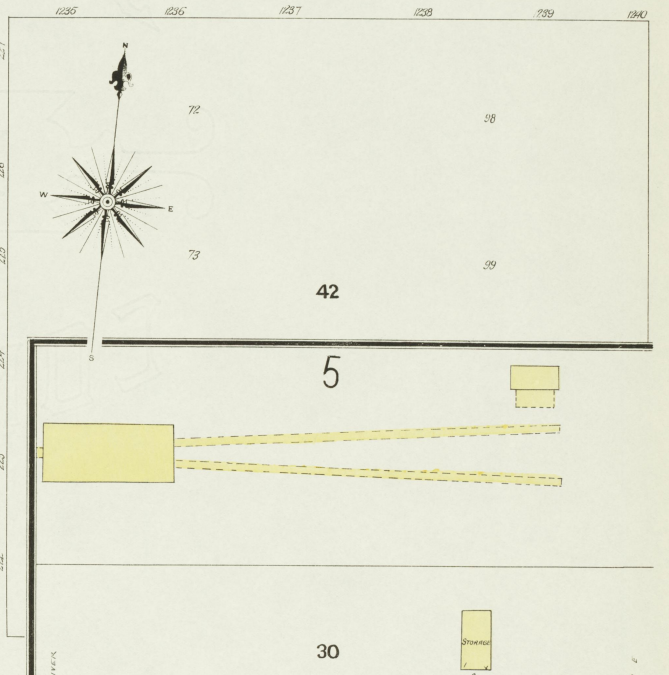
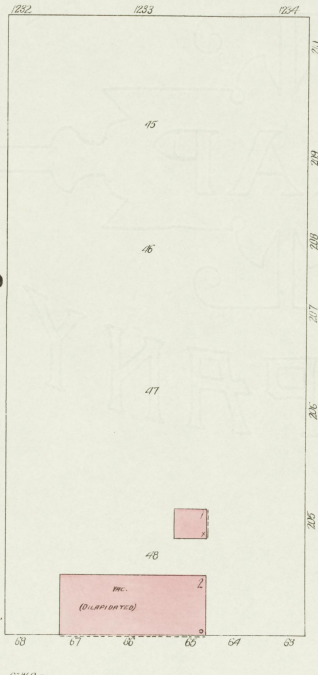
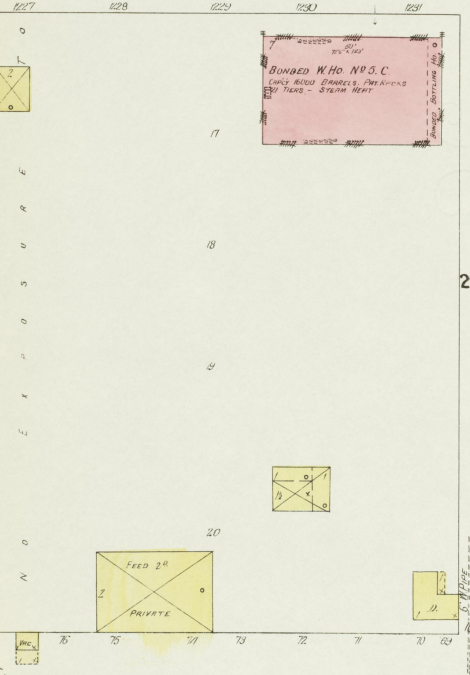
SYCAMORE

2

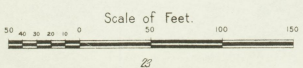
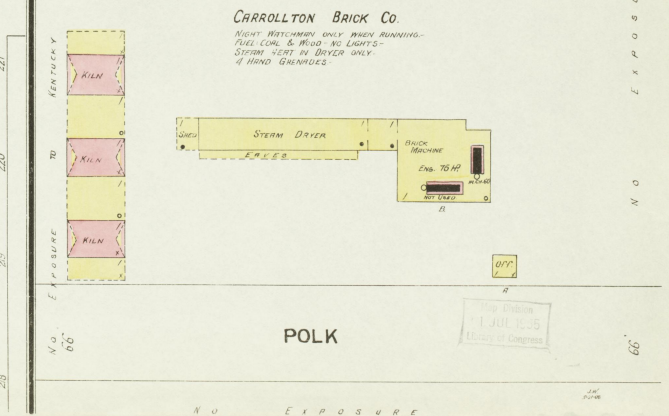
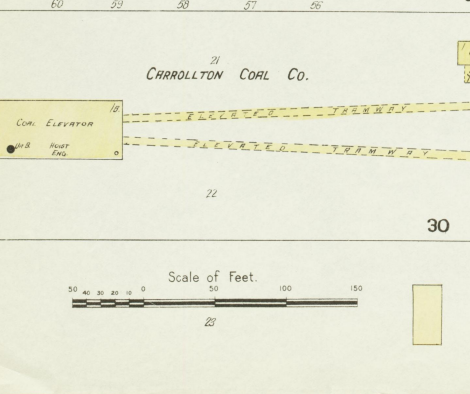


SEMINARY

SECOND



CLAY



5

5

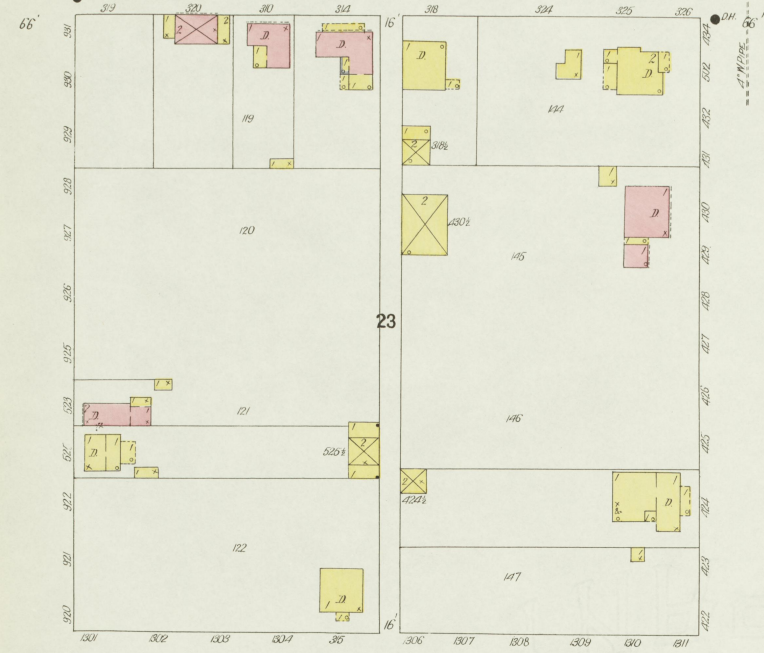
THIRD

66

E X P O S U R E

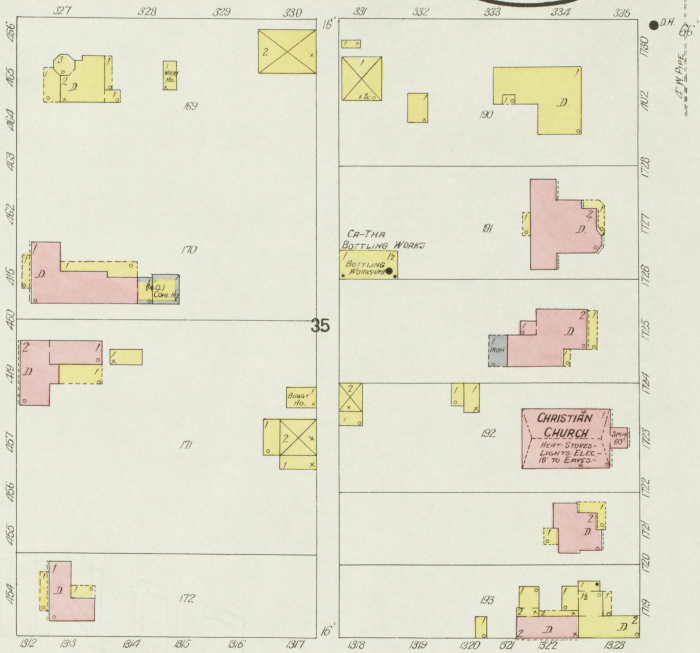
N O

66

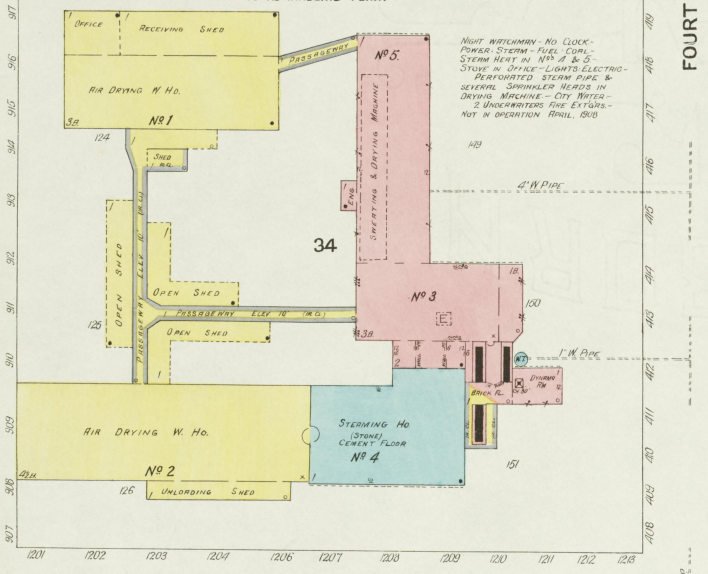


SYCAMORE

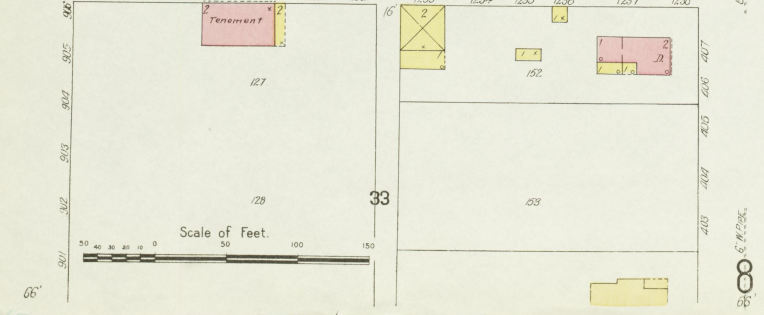
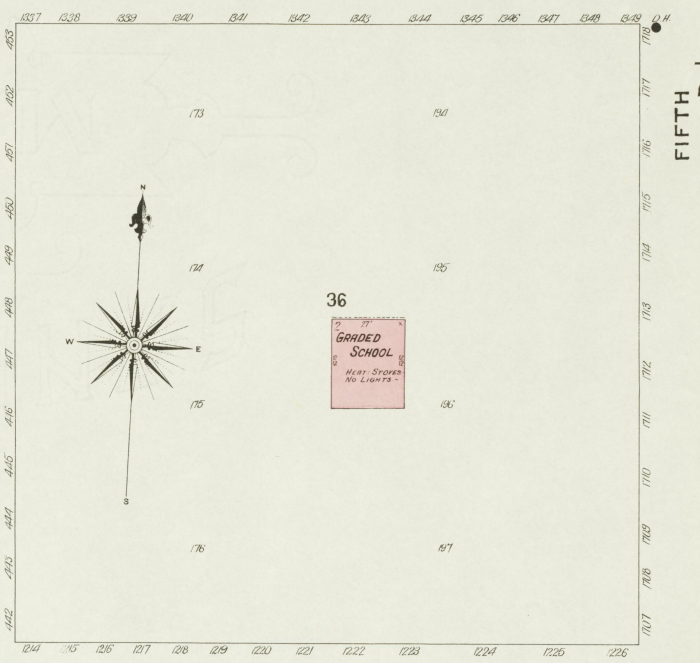
MAY 1908
CARROLLTON
KY.



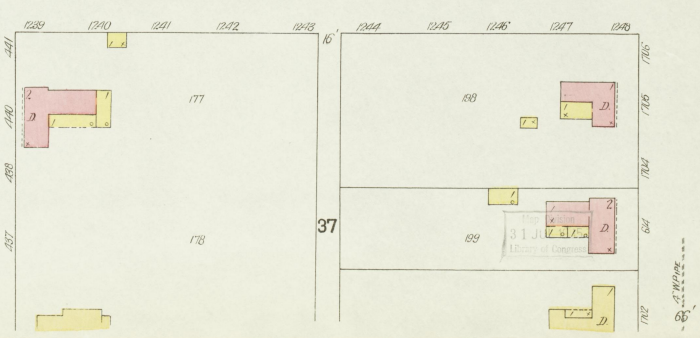
AMERICAN TOBACCO CO.
TOBACCO RE-HANDLING PLANT



SEMINARY



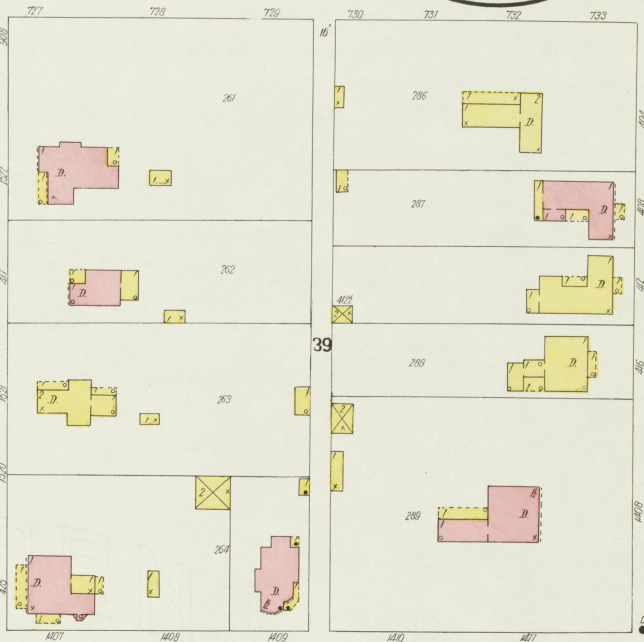
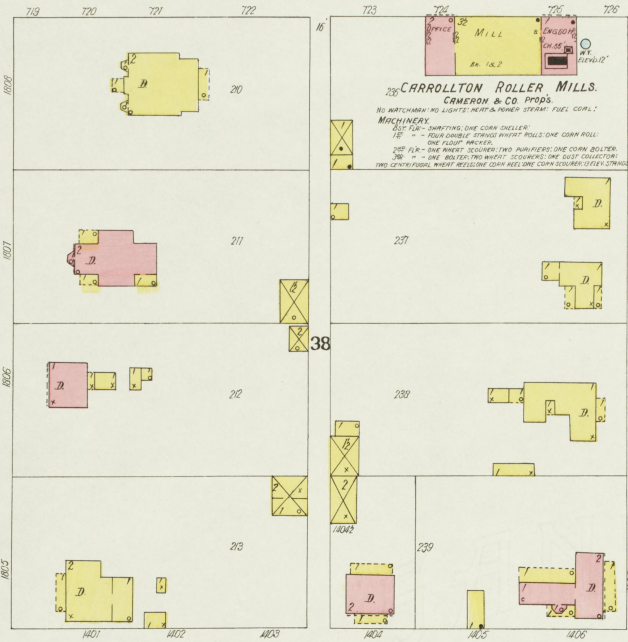
CLAY



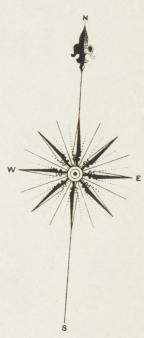
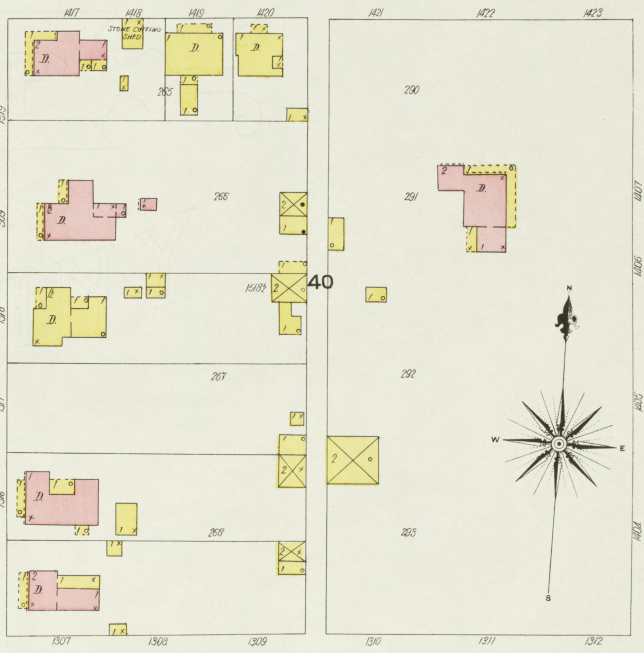
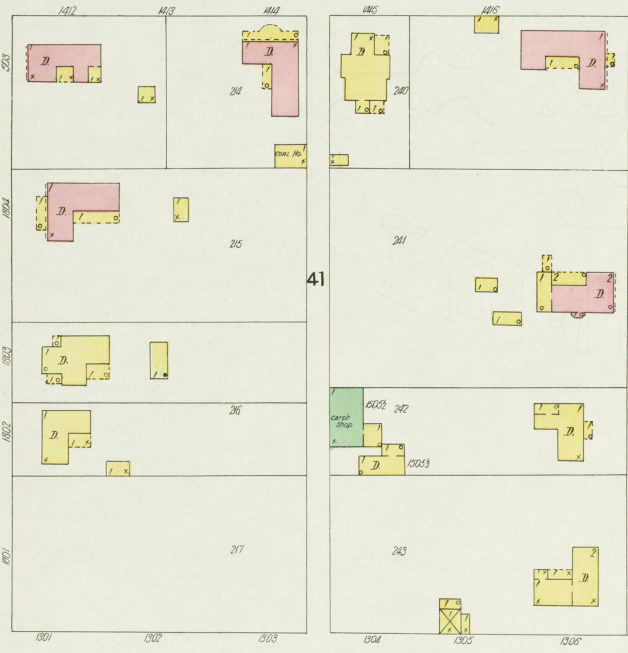
MAY 1908
CARROLLTON
KY.

SYCAMORE

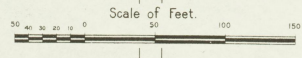
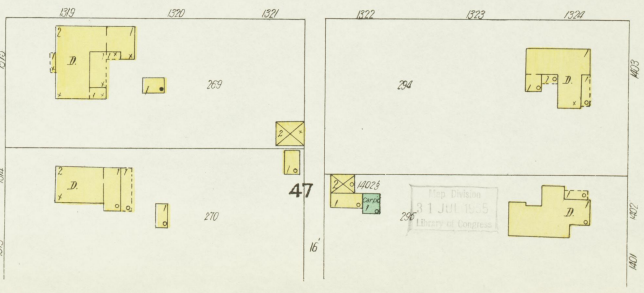
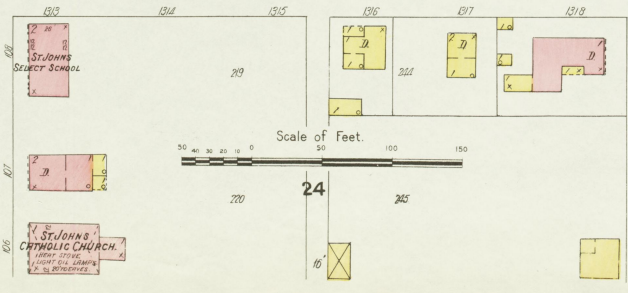
235 CARROLLTON ROLLER MILLS.
CAMERON & CO. PROPS.
NO. 18.2
MILL
OFFICE
ENGINE
WATER
WHEEL
MACHINE
BEST FLOUR - SHOOTING ONE CORN SHELLER
12E = FOUR CORNERS - SHOOTING MILL - ONE CORN ROLLER
ONE FLOUR BRICKS
BEST FLOUR - ONE PRINTER - SCOURER - TWO PAWHERS - ONE CORN BOLLER
200 = ONE WHEAT - TWO WHEAT - SCOURER - ONE BEST COLLECTION
TWO CENTRIFUGAL WHEELS - ONE CORN ROLLER - ONE CORN SHELLER - ONE SPRINGER



SEMINARY

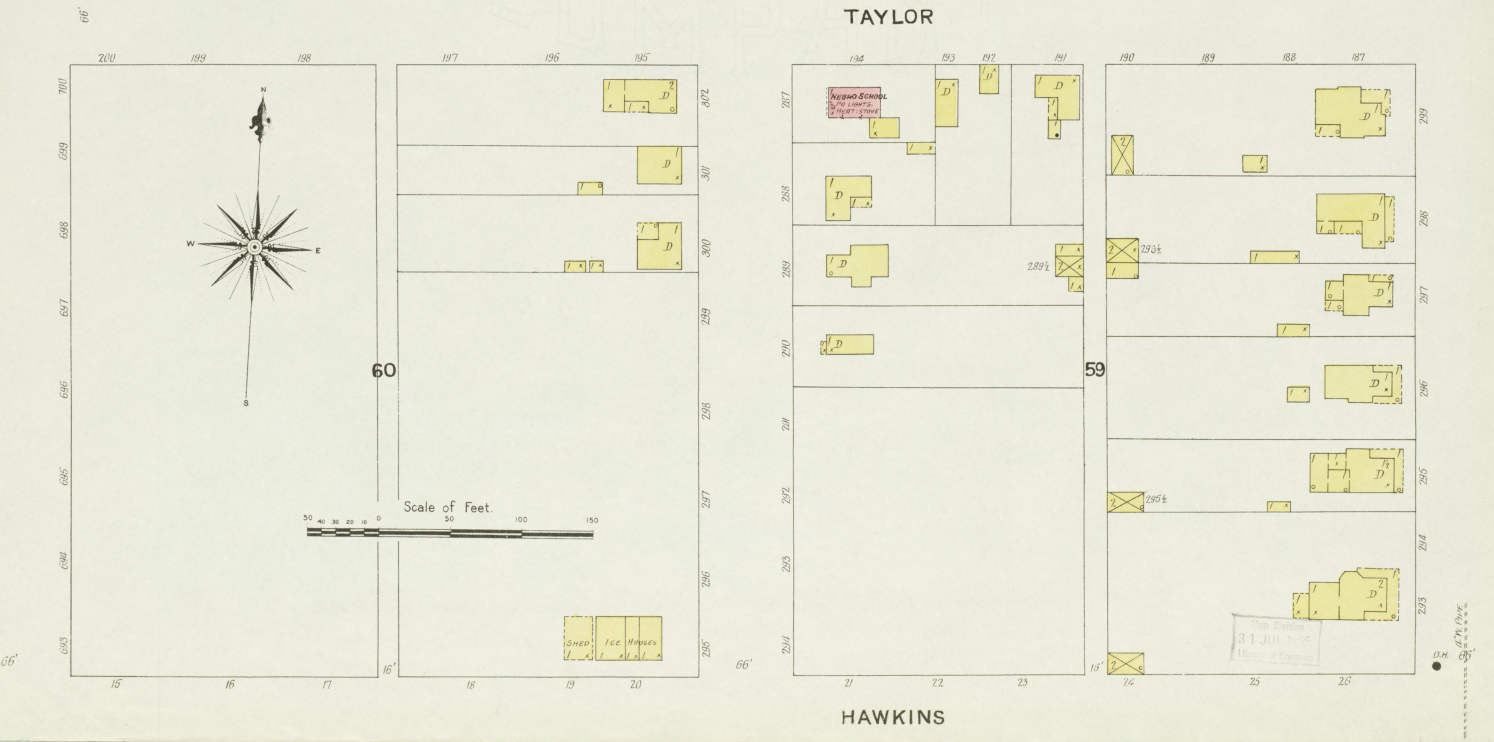
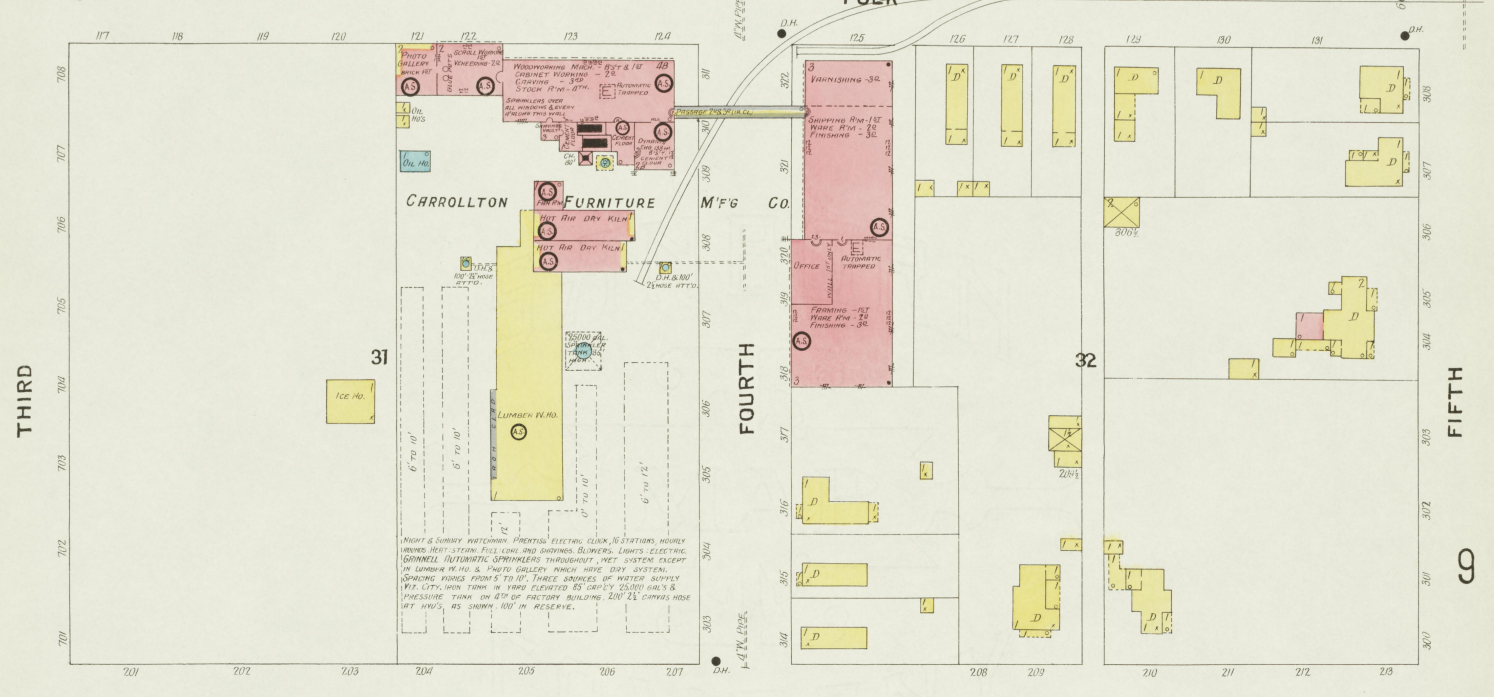
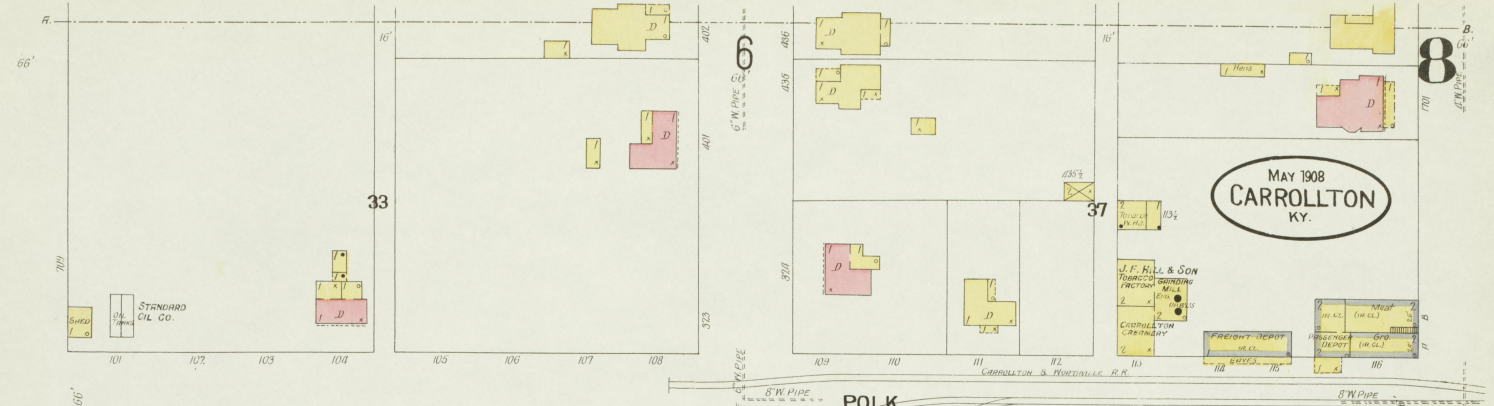


CLAY



ST. JOHNS
CATHOLIC CHURCH
1880
ST. JOHNS
CATHOLIC CHURCH
1880
ST. JOHNS
CATHOLIC CHURCH
1880

Top Edition
1 JUL 1905
E. M. D. P. Co.



MAY 1908
CARROLLTON
KY.



KENTUCKY DISTILLERIES & WARE HO. CO.
 THE DARLING DISTILLING CO.
 Known as Old Darling Distillery.
 Registered Distillery No. 4, 6th District, Prestonville, Carroll Co, Ky.
 Production: Sour Mash Bourbon Whisky—Run 3 months of year.
 Mash Capacity: 1000 Bushels—Yield 450.

NIGHT & SUNDAY WATCHMAN—IMMUGER CLOCK—5 STATIONS—POWER—STEAM—FUEL: COAL & CROS—
 HEAT: STEAM IN ALL WINDS—SPACE IN BOTTLING HO. & OFFICES—LIGHTS: SIGNAL OIL LAMPERS—
 WATER FROM KENTUCKY RIVER & DEEP WELLS—WET ROOM STEAM PUMP AT RIVER PONDING WATER
 TO PIPES ON 4th FLOOR OF DOUBLING HO. COMBINED CRACK 3000 GALS. AND TO SPRINKLER TANK ELEV.
 100' CAPACITY—10000 GALS.—BARRELS OF WATER & BUCKETS THROUGH DISTILLERY & WARE HO.—WELLS: P.S.
 AS SHOWN—GRINMELL AUTO SPRINKLERS—DRY SYSTEM IN FOLLOWING BUILDINGS:
 GRAIN ELEVATOR 117 HO. BARS, 2nd FLOOR, 2nd FLOOR—ENG. ROOM 18, HALL 17, 2nd 3rd, 3rd 4th—
 MAINT. RM. 5—DISTILLERY 117 1st 2nd, 2nd 2nd, 3rd 2nd, 4th 2nd, CHIM. 117 1st; ONE IN EACH MEAL ELEVATOR.
 BOILER RM. 45, DOUBLING HO. 117 2nd, 2nd 2nd, 3rd 2nd, 4th 2nd, CHIM. 117 1st; ONE IN EACH MEAL ELEVATOR.

Scale of Feet.
 0 50 100 150