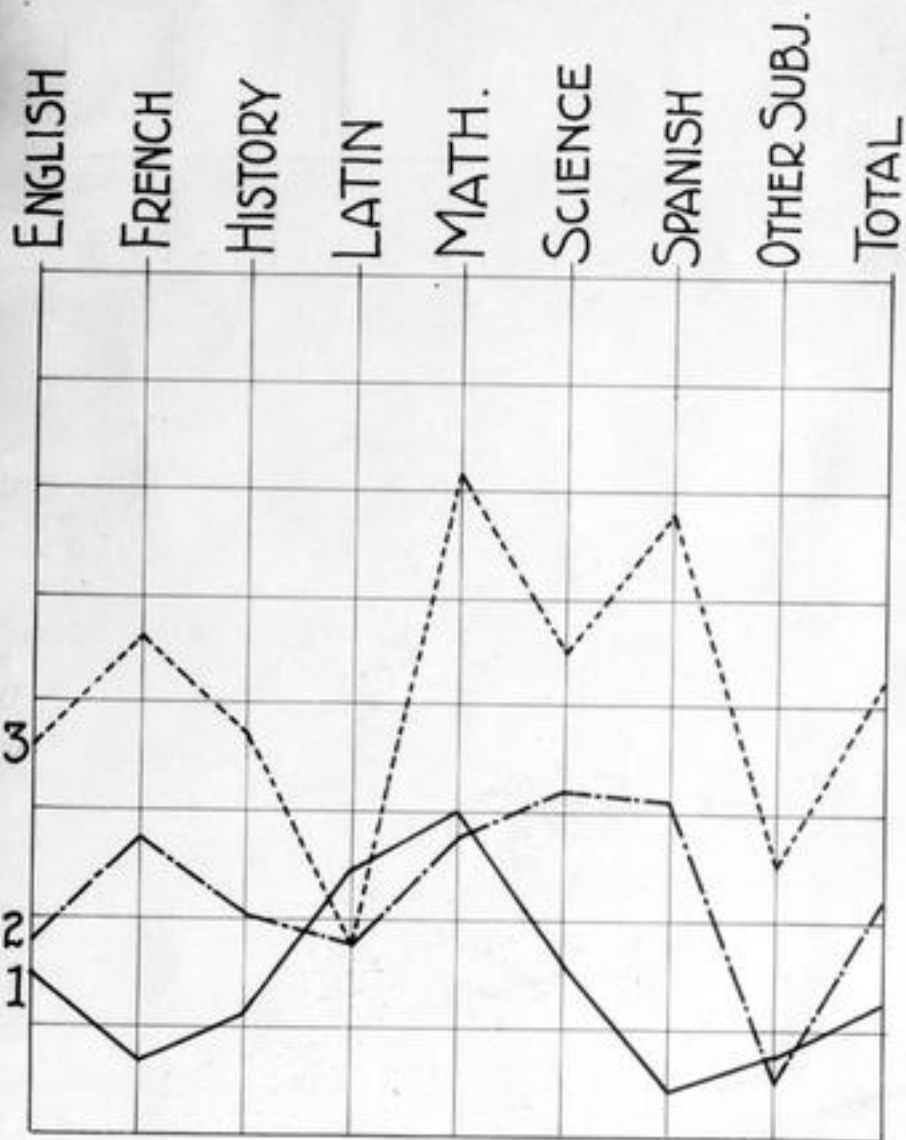


SHOWING A COMPARISON OF THE PERCENTAGE OF FRESHMAN FAILURES IN THREE GROUPS OF SOUTHERN INSTITUTIONS. FROM MR. ROEMER'S REPORT FOR 1926-27, PP. 204, 205, 206.



- 1. REPRESENTING ELEVEN TEACHER TRAINING INSTITUTIONS —
- 2. REPRESENTING ELEVEN COLLEGES FOR WOMEN —
- 3. REPRESENTING ELEVEN STATE UNIVERSITIES - - -

SHOWING COMPARISON OF THE PERCENTAGE OF FRESHMAN FAILURES IN ENGLISH IN TEN UNIVERSITIES OF THE ASS'N. SEE TABLE P. 206, MR. ROEMER'S REPORT FOR 1926-27.

