

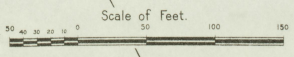
NOTE
 NO FIRE DEPT. & CO. 2
 5th FIRE DEPT. 1
 EST. DISTRIBUTED
 ABOUT TOWN



KEY

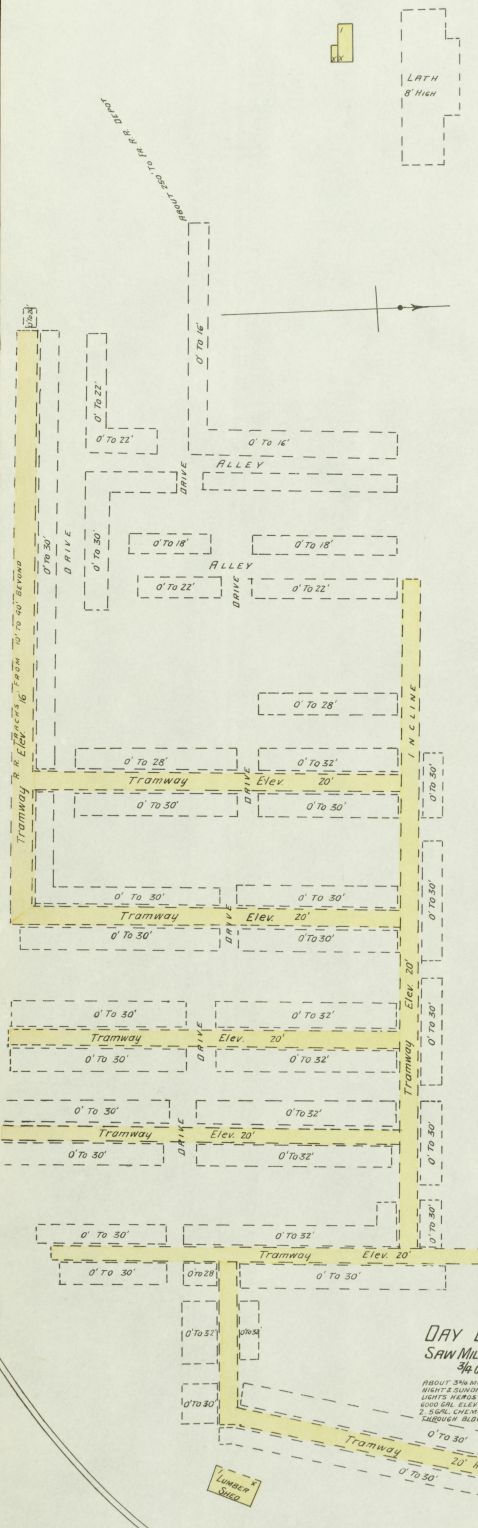
1" = 50' AS FAR AS ROOF
 (1) - 2" - 4" - 6" - 8" - 10" - 12" - 14" - 16" - 18" - 20" - 22" - 24" - 26" - 28" - 30" - 32" - 34" - 36" - 38" - 40" - 42" - 44" - 46" - 48" - 50"

WOOD COLORED YELLOW AND FRAME
 BRICK - RED
 STONE - BLUE
 IRON - BROWN
 GLASS - GREEN
 ADOBES - BROWN
 SPECIALS - BROWN
 MARKED (E) ARE CLOTH LINED
 (S) INDICATE RELATIVE HEIGHTS
 ALTERNATE STREET NOS ARE ACTUAL
 CONNECTIVE - ARBITRARY
 BROWN LINE NEAR BLDG = WOOD CORNICE
 SOLID - METAL



Map Made
 11 JULY 1887
 1 Bureau of Commerce

MAR 1897
JACKSON
KY.



DAY BRO'S LUMBER CO.
SAW MILL & LUMBER YARD
1/4 MILE W. OF COURT HO.

ABOUT 2000 BBL. OF LUMBER IN YARD. NO CLOCK
MILLS & SUNDRY MACHINERY. POWER-STEAM FUEL-WOOD
LUMBER YARD IN BLDG. NO HOT WATER FROM RIVER.
WOOD CH. ELEV. 11'. NO TO PASS IN BLDG. THE SAW WITH W.T.
2.5000. LUMBER. EXT. BILLS & CHECKS. DISCOUNTED
LUMBER. BLDG. & YARD

G. LITTLE SAW MILL
NEAR BATHING SPRING. HIGH-POWER
POWER-STEAM. FUEL-WOOD. NO HOT
NO HOT WATER FROM RIVER.

HOGG & COMBS GRIST MILL
POWER-STEAM. FUEL-WOOD. NO HOT
NO HOT WATER FROM RIVER.

BIGGS PUMP CO.
PUMP FACTORY & PLANING MILL.

Map of Jackson
31 JUL 1895
Library of Congress
Phot. J. S. [unclear]

