



# GLSO NEWS

Vol. 10 November 1997 No 11

A Publication of the Lexington Gay and Lesbian Services Organization

## GLSO Seeking Sponsors and Subscribers

In the last two years, the *GLSO News* established a sponsorship program that has brought us financial stability. We ask individuals, businesses, or community groups to help us by paying one month's newsletter printing cost (\$175). In exchange we publish a list of all sponsors every month in the newsletter, and feature one sponsor each month with a full page ad and a listing on the front page.

We are now seeking sponsors for 1998. Letters will be sent out to sponsors from previous years and to other interested people. If you do not receive a letter but would like more information, please contact Terry at 255-5469. We greatly appreciate the individuals and groups that have been willing to sponsor the newsletter.

The GLSO Board debated increasing the cost of sponsorships for 1998 to pay for an increase due to addition of color such as was used this year in June and October. The cost of color in October was financed by our "Queer as a Three Dollar Bill Campaign" which brought in the extra \$45 needed for printing. We decided against increasing sponsorships for 1998 but would like to know the opinions of sponsors and readers about the possibility of doing this for 1999.

We are also seeking an increase in subscribers and are offering a special deal for renewal and new subscriptions during the next two months. [See page 5.]

## World AIDS DAY 1997 Monday, December 1st

The World AIDS Day program, commencing with Registration at the Radisson Plaza Hotel at 8 a.m., will include an overview of the epidemic in Kentucky by Jamie Rittenhouse (HIV/AIDS Program Director) followed by a Medical Treatment Update and Discussion by Dr. Ardis Hoven (Infection Disease Specialist from the Lexington Clinic) and Patricia Jennings (MHS,P.A.-C from the UK Clinic).

In the afternoon, the program will continue with an HIV/AIDS PREVENTION Panel discussion with specialists on MSM, Youth, Women, African Americans, IDUs, Sex Workers and Workplace.. The afternoon will continue with break out sessions for providers, complimentary healing therapies and a film fest with films specific to HIV/AIDS medical and psychosocial issues.

The day will conclude with a candle light vigil and memorial service at Triangle Park at 5:30 p.m. You need not be a conference participant to attend. The public is welcome and encouraged to attend. Registration information and cost can be obtained from AVOL (278-7494) and must be received by Nov. 14th.

### GLSO ONLINE

Peter: [pjtayl00@ukcc.uky.edu](mailto:pjtayl00@ukcc.uky.edu)

Mary: [Marycrone@aol.com](mailto:Marycrone@aol.com)

Terry: [misterb@gte.net](mailto:misterb@gte.net)

## Miss Daisy's Toys For Kiddies

On December 1st, immediately following the World AIDS Day candle light vigil in Triangle Park, **Ebony Male** is hosting Miss Daisy's TOYS FOR KIDDIES party at **Vertigo**. This is NOT your typical Toys For Kiddies party that happens this time of the year. Miss Daisy's party will be for children in families that are dealing with AIDS, whether it be the children themselves or their parents who are ill.

This is the second year the party is being held and the first year it has been named for Miss Daisy (AKA Richard Armstrong). Richard, a member of **Ebony Male** (it was his idea to hold this party last year).. died this year, and **Ebony Male** has decided to honor him perpetually by naming this party after him.

**Ebony Male** will serve food and refreshments. The admission price: **A NEW TOY**. If you cannot attend but would like to donate a toy, call John at 389-7081 or Bill at 255-5469.

Sponsor of the  
Month

Front  
Runners



### The GLSO News

Vol. 10 Issue 11

Published Monthly by the  
Lexington Gay/Lesbian Services

Organization  
321 E 2nd Street  
Lexington, KY 40508

Editor:  
Peter Taylor

Community News Editor:  
Mary Crone

Layout Editor:  
Charlie Perkins

GLSO Annual Dues and  
Newsletter: \$15  
Dues and Newsletter for  
Couples: \$20

Views or opinions expressed in the GLSO News are those of the authors and don't necessarily represent those of the GLSO Board of Directors.

Submissions are welcome. All submissions become the property of GLSO and must indicate full name and address of the author. The staff reserves the right to edit submissions and ads to meet publishing requirements, as well as the right to reject any submissions.

## Christmas Card Fund Raiser

The holiday season is coming once again and that means that the Christmas Card Board is about to make a reappearance. This year proceeds will benefit AVOL and the AIDS Medication Fund at the Fayette County Health Department. This is the third year that it has made the rounds of local holiday events and gay friendly businesses. If you have missed it is years past, please try to catch it this year.

If you are at one of the events listed below or at one of our community bars, it will be hard to miss. It is a very large Christmas card and you, the charitable giver that we know you are, purchase a small card that has room inside for a personal message or memorial message. There are a variety of cards designed by Bill Chandler available for \$1, \$2, or \$3. The small cards you purchase are placed on the large Christmas Card Board and can be read by other people as the card travels. The board with all our messages will be kept for showing each year until AIDS is conquered.

This year the Card has gotten several new sponsors from organizations around the community including GLSO, MCC, Ebony Male, the Royal Sovereign Imperial Court, and the Lexington Men's Chorus. A few more sponsors will be added to this list.

The traveling schedule is not finalized but some of the dates are as follows: Dec. 1st at the Radisson for the World's AIDS Days Conference and that evening at Ebony Male's Toys for Kiddies party at Vertigo, Dec. 6th at Crossings from 9 to 1, Dec. 7th at MCC from 11AM to 2 PM, Dec. 13th at the Imperial Court Benefit at Vertigo, and Dec. 20th at The Bar Complex. It will be on display at the Pride Center from the 21st to the 28th. Additional dates will be listed in next month's *GLSO News*.

Please find us at one of these locations and make a donation. The contribution requested is so small (\$1 to \$3) and the money is so badly needed for medication. Just think, if every lesbian/gay/trans person in Lexington bought just a \$1 card, we could collect \$20,000. Wouldn't that be fantastic?

## Establishing a LGBT Archives in Lexington

GLSO has been offered a collection of personal papers and a small amount of seed money to establish an archives devoted to preserving the history of our gay/lesbian/bisexual/transgendered community.

Documenting the local history of any LGBT community is important but many times overlooked. Mainstream institutions are often unable or unwilling to acquire and make accessible the personal papers and organizational records of the LGBT community. Likewise community members and organizations are often hesitant to place papers in mainstream archives.

This has led over the years to the establishment of several independent LGBT archives. Among these are the Lesbian Herstory Archives in New York, Gerber/Hart Library in Chicago, and the Kentucky Gay and Lesbian Archives and Library in Louisville.

A committee has been formed to develop a plan for proceeding with such a project in Lexington. We want to insure that all donations to the archives will be well preserved and accessible to individuals wanting to explore our local history. This will take careful planning, commitment and fund raising. If you would like to participate or have any input regarding establishing a local LGBT archives, please contact Jane at 502-875-3294 (Leave a message.).

To add or update a  
directory listing,  
please contact  
Mary at 266-5904.

For mailing address  
label corrections  
please contact Peter  
at 273-9649

IF YOUR MAILING LABEL  
IS YELLOW



# COMMUNITY NEWS

## NETWORKING MEETING

All members of our community are invited to attend the Networking Forum on Tuesday, Nov. 11th, at 7 pm. at the Pride Center (387 Waller Ave.). We will start with a pot luck and casual conversation and then move into an exchange of information about community activities and needs.

We hope that all community organizations will send a representative or two to this gathering. This is an easy way of building bridges among various groups and thereby increasing our community cohesion.

We also encourage attendance by any individuals who would like to learn more about what is going on in Lexington and how they can become a part of our LGBT activities. (Michael 225-1828)

## Interweave

The next interweave luncheon will be Sunday, Nov. 9th immediately following the church service (approximately 12:30 pm) in the Fellowship House. Please bring a potluck dish to share. Join us for good food and fellowship.

All women are invited to join us for a girl's night out Sat. Nov. 15th. The fun begins with dinner at The Melodeon (200 W. Main St.) at 7 pm. At 9 pm. we will walk to The Watering Hole (147 N. Limestone) for karaoke and a few games of pool. From there, who knows where the night will take us. Interweave programs are always open to the larger community. Please call Davina(271-6174 for more information.

## Lesbian Discussion Group

The lesbian discussion group will no longer meet this fall. We invite you to attend the networking meeting on Nov. 11th for discussion and good fellowship. Anyone interested in starting a discussion

group of any kind is invited to do so by contacting Mary Crone (266-5904) or by announcing it at the networking meeting. We will try another lesbian discussion group in February. Stay tuned.

## Game Night

MCC is hosting regular game nights on the fourth Friday of each month, which falls on the 28th in Nov.. We start at 7 pm. at the Pride Center. Please join us.

## P-FLAG

Parents, Friends, and Family of Lesbians and Gays (P-FLAG) is again scheduling regular meeting on the second Tuesday of each month. We meet at the Chapel Hill Presbyterian Church at the corner of Tates Creek and Armstrong Mill. Contact Perry ( 502-226-5478) for more information

## "Sisters for Dignity" Great Success

Dignity Lexington would like to thank everyone who made their October fundraiser, "Sisters for Dignity," such a rousing success. Special thanks go to all the performers who donated their time and considerable talents to put on a fabulously entertaining show. Special kudos to the lovely and talented Brianna Carey who served as mistress of ceremonies.

For providing the time, space, and advertising Dignity owes a great debt to The Bar. And lastly, to the 75+ stalwart souls who came out on a Wednesday night to support Dignity, we hope you all had a great time and that you tell your friends. There just may be a "Sisters for Dignity: 2" in the future.

Dignity is a Catholic gay and lesbian support group, open to all, which provides opportunities for fellowship and service through regular worship services and several community based volunteer projects. Funds

raised by the show will support Dignity's volunteer activities.

## Watts to Sign Novel

The 16th Annual Kentucky Book Fair will include lesbian author, Julia Watts. Watts will be signing her latest novel, *Phases of the Moon*, the story of a lesbian rockabilly singer, born in southeastern Kentucky who finds success with the emergence of "women's music" in the 1970s.

Some may know Watts' first novel *Wildwood Flowers*, also set in Kentucky. She is the recipient of a Kentucky Foundation for Women Writers grant. Watts will be among more than 150 authors signing their works, which will be sold at a 20% discount.

This years Book Fair will be held on Saturday, November 22 from 9 a.m. to 5 p.m. in the William Exum Building at the entrance to the campus of Kentucky State University in Frankfort. Admission and parking are free. For additional information or a complete fair guide, call the Kentucky Department for Libraries and Archives at 502-564-8300.

## Marga Gomez

Marga Gomez, a lesbian comedienne, will be performing *Memory Tricks*, her one woman show, at UK's Worsham Theatre, in the Singletary Center, on Nov. 8th. Marga has been performing for gay and lesbian audiences for many years and it is great to see her breaking into the mainstream with this current piece of work.

This performance focuses on Marga's relationship with her mother and ranges from childhood memories to current impressions of her aging mother who has Alzheimer's disease. The show has been called a drama with a sense of humor and has received great reviews. Tickets (\$13 for the general public) are available through the Student Center Ticket Office.

## DOMESTIC VIOLENCE WITHIN OUR FAMILIES?

by Mary Crone

Recently, our Lesbigantrans community has protested a bill introduced by Senator Tim Philpot that would exclude same sex couples from coverage under existing domestic violence laws. Most of us believe that we should be able to request services that are provided by the state for individuals who have been battered or otherwise abused within a relationship. These services include crisis intervention from police or from spouse abuse hotlines, the possibility of staying in a spouse abuse shelter, and legal alternatives such as prosecution or obtaining protection orders.

How much do you know about the violence that occurs between same gender couples and the help that is actually available to individuals in our community? I have spoken with Sheryl Withers at the Lexington Spouse Abuse Shelter. They do not keep statistics concerning the sexual orientation of clients but do offer help to all callers. They have had lesbian women make use of the shelter here in town as well as their outreach counseling program. Housing for male victims is not available at this shelter but can be arranged. Counseling for men (not perpetrators who are referred to Comp Care) is also available and has been used by 58 men, some of them gay.

Ms. Withers also emphasized that when we talk about domestic violence, we are not just talking about physical abuse. Domestic violence may include many forms of intimidation and control including economic abuse, sexual abuse, and emotional abuse. (See box at right) The spouse abuse shelter has information they can mail you, including at least one handout focusing on abuse within gay and lesbian relationships. Give them a call at 255-9808.

How much domestic violence occurs within our community? A national study by the National Coalition of Domestic Violence

found in a survey of 12 cities between 1986 and 1997, that the amount of violence among gay and lesbian couples is comparable to the rate among straight couples. They estimate that some form of abuse, including physical, sexual, and verbal abuse, occurs in 25% to 33% of all relationships.

The study also found that gays and lesbians have their access to crisis intervention and legal services limited in a number of states. Seven states ban same gender couples from receiving such services. Other states do not specifically ban access but do not train workers in specific ways to work with members of the LGBT community. Without some basic sensitivity training, I can imagine that many people working with domestic violence would intentionally or unintentionally discourage LGBT individuals

from persisting in seeking help. San Francisco stood out in this study for the work done to reach out to and provide services for our community. They have, for example, a staff of seven attorneys that work exclusively with domestic violence cases within the LGBT community.

Fairness will be looking for phone tree volunteers as the Kentucky Legislature meets again in January of 1998. Protesting Philpot's amendment by writing or calling your state representatives is one thing you can do to increase the probability that LGBT couples will receive the help they need. And I believe that it is just as important for us to recognize that we **do** have this problem of violence within our community, which is true not because we are queer but because we are human.

### Emotional Abuse

Emotional abuse is common and very damaging. It is often more difficult to recognize or to name because it leaves no obvious scars. Here are some of the forms emotional abuse can take in a relationship and some indicators that you could benefit from counseling.

1. **Isolation:** Is your partner jealous of your friends or family? Does s/he object to your spending time with friends or try to limit your phone calls? Does s/he insult people you like?
2. Does your partner **belittle or degrade** you? Does s/he call your names (stupid, slut,) or say no one else would want you? Does s/he ridicule your interests, work, or opinions?
3. Does your partner intentionally **embarrass or humiliate** you? Does s/he tell your secrets in public? Does his/her "teasing" feel mean? Does s/he say you are "too sensitive"?
4. Do you find yourself being careful not to upset your partner? Do you feel like your "walking on eggshells"? Have you changed a lot about yourself to please him or her?
5. Does s/he use **homophobia** against you? By saying you're "not man enough" to take it? By implying that you're not a "real lesbian", that you're too "fem" or too "butch". By saying that abuse isn't possible in a gay relationship? By implying that no one will believe or help you because you are gay?
6. Does your partner say you are a bad parent (perhaps because you are gay)? Does s/he threaten to tell your ex-spouse or authorities that you are gay or lesbian so they will take your children? Does s/he belittle or threaten your children, "punish" them without your consent?
7. Does your partner **threaten** to leave you frequently? Does s/he say s/he will kill him or herself if you leave? Does s/he threaten to hurt or kill you, your children, or your pets?
8. Does your partner say that abuse isn't real? or is your fault, that you provoke it?





**Sister Sound  
Lexington Women's Chorus**

presents

***ONE WORD***

A Holiday Concert

Date: Saturday, December 6  
Time: 8:00 p.m.  
Location: Singletary Center Recital Hall  
Tickets: \$10 in advance, \$12 at the door  
\$8 for seniors and students

Tickets available through the Singletary Center ticket office (257-4929) or contact a chorus member.



# NOVEMBER 1997

USE DIRECTORY ON LAST PAGE FOR CONFIRMATION

2 SUNDAY	3 MONDAY	4 TUESDAY	5 WEDNESDAY	6 THURSDAY	7 FRIDAY	8 SATURDAY
10:45 a.m. Unitarian Universalist Ch. 11:30 a.m. Lexington's Metropolitan Community Church 7:00 p.m. Dignity (Pride Center)	8:00 p.m. AA Step Study	8:30 p.m. Rainbow Bowling League	6:00 p.m. Frontrunners (Woodland Park) 6:00 p.m. HIV/AIDS Support Group 7:00 p.m. MCC Study Group 8:00 p.m. Gay/Lesbian AA 8:00 p.m. 2 Step & Swing Dancing (Club 141)	7:00 p.m. Men's Chorus Rehearsal (Pride Center) 7:00 p.m. Film - (UU Church) 7:30 p.m. UK Lambda (Room 231 Student Center)	7:30 p.m. Gay/Lesbian AA	9:00 a.m. Frontrunners (Arboretum) 7:30 p.m. Gay/Lesbian AA
10:45 a.m. Unitarian Universalist Church 11:30 a.m. Lexington's Metropolitan Community Church 12:15 p.m. UUCL Pot Luck	7:00 p.m. GLSC Board Meeting (Pride Center) 8:00 p.m. AA Step Study  <i>GLSC NEWS DEADLINE ALSO SUBMIT ADDITIONS, UPDATES AND CORRECTIONS FOR DECEMBER NEWSLETTER 273-9649</i>	7:30 p.m. P-Flag 8:30 p.m. Rainbow Bowling League	6:00 p.m. Frontrunners (W. Park) 6:00 p.m. HIV/AIDS Support Group 7:00 p.m. MCC Study Group 7:00 p.m. Fairness Movie (Pride Center) 8:00 p.m. Gay/Lesbian AA 8:00 p.m. Ballroom Dancing (Club 141)	7:00 p.m. Men's Chorus Rehearsal (Pride Center) 7:00 p.m. Film - (UU Church) 7:30 p.m. UK Lambda (Room 231 Student Center)	7:30 p.m. Gay/Lesbian AA	9:00 a.m. Frontrunners (Arboretum) 7:30 p.m. Gay/Lesbian AA
10:45 a.m. UU Church 11:30 a.m. LMCC Church 6:00 p.m. SisterSound (Park Me.Ch.) 7:00 p.m. Dignity (Pride Center)	8:00 p.m. AA Step Study	Pride Center Board Mtg. 8:30 p.m. Rainbow Bowling League	6:00 p.m. Frontrunners (W. Park) 6:00 p.m. HIV/AIDS Support Group 7:00 p.m. MCC Study Group 7:30 p.m. Fairness (Pride Center) 8:00 p.m. Gay/Lesbian AA 8:00 p.m. Line & Partner Dancing (Club 141)	6:00 p.m. HIV/AIDS Support Group (Pride Center) 7:00 p.m. Men's Chorus Rehearsal (Pride Center) 7:30 p.m. UK Lambda (Room 231 Student Center) 8:00 p.m. Bluegrass Colls members 9:00 p.m. Colls non-members	7:30 p.m. Gay/Lesbian AA	9:00 a.m. Frontrunners (Arboretum) 7:30 p.m. Gay/Lesbian AA
10:45 a.m. UU Church 11:30 a.m. LMCC Church	8:00 p.m. AA Step Study	8:30 p.m. Rainbow Bowling League	6:00 p.m. Frontrunners (W. Park) 6:00 p.m. HIV/AIDS Support Group 7:00 p.m. MCC Study Group 8:00 p.m. Gay/Lesbian AA 8:00 p.m. Open Dancing (Club 141)	THANKSGIVING DAY	7:00 p.m. MCC Game Night 7:30 p.m. Gay/Lesbian AA	9:00 a.m. Frontrunners (Arboretum) 7:30 p.m. Gay/Lesbian AA
10:45 a.m. UU Church 11:30 a.m. LMCC Church						

## ALFALEA



**RESTAURANT**  
557 S. Limestone  
Lexington, KY  
253-0014

featuring the  
**Famous Alfalfa  
Weekend Brunch:**  
serving blueberry  
buckwheat pancakes,  
eggs benedict arnold,  
spanish omelettes,  
gourmet desserts,  
and much more...

**All of our breads and  
desserts are baked daily  
in our kitchen.**

**FREE EVENING  
PARKING.**



# GERTIE MAE NOE

Dear Gertie Mae,

I've got a problem with my best friend that maybe you can help me with. We have been "best friends" for four years now, and a couple of months ago, she started dating someone new and it seems to be serious. My problem is that she doesn't call or do anything with me anymore. I always have to call her, and then leave a message. Sometimes she returns my call and sometimes not. It's like I don't matter anymore and I'm hurt. Why is it, that just because she is seeing someone she has to ignore me? I like her new girlfriend OK, why can't we do some things together? Am I wrong to feel this way?

Hurt in Lexington

Dear Hurt,

Honey, I feel your pain! You know, I have NEVER understood this phenomenon but it happens all the time. When somebody finds a new lover, the loyal friends that have seen them through thick and thin don't even rate the time of day anymore. I really don't know when people are going to wake up and realize that lovers are a dime-a-dozen (and usually that's MORE than they're worth) but true friends can be for a lifetime if you treat 'em right.

Of course, that's really part of the problem... old friends believe that you'll be there when they need you, meanwhile they're out making hay or whoopie or whatever while the sun shines. And for the most part, they're right! You will probably be right there to help them celebrate their five-year anniversary (if it works out) or help her get over her broken heart (if it doesn't). But that doesn't mean that being neglected doesn't feel like a crock of steaming donkey dung right now!

You say that it's only been a few months, so more than likely if your friend develops a good relationship with her new "soul mate" she'll eventually get back in touch with you. It could be as much as year though, before the "honeymoon" is finally over. At least this is the usual course of events. Since it could be a long time before things get back to normal, if ever I suggest that you go out and start some new friendships so that you have some people to fall back on is she comes back or if she doesn't.

Good Luck

Gertie Mae

## Networking Forum

**Tuesday  
Nov. 11th  
7:00 p.m.  
Potluck**

*come share good food  
and information*  
**Pride Center  
387 Waller Ave.**

**Newcomers:**  
*this is a great  
place to get  
connected*  
Rumor: Gertie Mae  
might show up

## Pick of the Litter

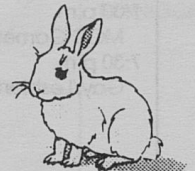
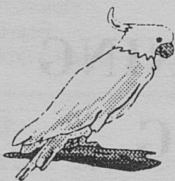
## Pet Sitters



Specializing in In-Home  
Pet Care for All Shapes, Sizes and Types of Pets

**Licensed ♦ Bonded ♦ Insured**

**(606) 253-3715**



## HOLLIDAY GIFT OFFER

Are you looking for the perfect Holiday gift for a friend AND yourself?  
Do you know someone who isn't receiving the GLSO News at home,  
.....but who should be?

We have a suggestion...

Renew (or begin) your subscription for a full year at  
**HALF PRICE** when you sign up a new subscriber!

Renew or Begin my subscription for \$7.50 (\$10 for couple):

Name: \_\_\_\_\_

Address: \_\_\_\_\_

City, State, ZIP: \_\_\_\_\_

And start sending the GLSO News to new subscriber:  
(\$15.00 for an individual and \$20.00 for a couple):

Name: \_\_\_\_\_

Address: \_\_\_\_\_

City, State, ZIP: \_\_\_\_\_

Plus....

Additional new subscriptions are available at the **reduced price** of \$10 for singles, or  
\$15 for couples. List additional names and addresses on a separate sheet of paper.

PLEASE make all checks payable to GLSO and mail with this form to:

**GLSO**  
**P.O. Box 11471**  
**Lexington, KY 40575**

**Remember...**

ALL subscribers become VOTING members of the GLSO.  
All Newsletters are sent enclosed in a plain white envelope to insure **privacy**.



The GLSO News is proud to present  
our supporters for 1997:

Windy Knoll Farm.....	299-7410
Riding lessons, dressage and jumping, trail riding, boarding	
Ernesto Scorsoni, Attorney at Law .....	254-5766
Crossings, a Man's Bar, including The Rack .....	233-7266
117 n. Limestone	
Metropolitan Community Church .....	271-1407
387 Waller Ave, Sunday Worship 11:30 AM	
A Church for all God's People	
Ted Richardson, OD .....	278-4201
Richardson Vision Center, Gardenside Plaza	
Unitarian Universalist Church .....	223-1448
2564 Clays Mill Rd	
seeking a diverse congregation: Sunday Worship 10:45	
Imperial Flowers and Gifts .....	233-7486
Serving the Community Worldwide	
Sue Strong, Ph.D., Licensed Psychologist .....	277-3119
James W. Gardner, Attorney at Law.....	253-1320
Lexington Men's Chorus .....	266-9175
Pegasus Travel.....	253-1644
donating 1% of your ticket cost to GLSO	
Tim Banks and James Slaline	
Front Runners	

**Sponsorships**

GLSO News is now looking for sponsors for 1998. Sponsors donate \$175 which is approximately the cost of printing the newsletter each month, and in exchange receive one full page advertisement and mention on the front page once during the year and a listing on the sponsorship page every month. Interested? Call Terry at 255-5469

GLSO Sponsor of the Month



**Join us. . .**

for our weekly run/walk. It's a terrific way to stay fit and meet people in the gay and lesbian community. All are welcome to come out and join us. Bring a friend, out of town guest, or just yourself. The Lexington Front Runners meets twice each week:

- Wednesday—6 p.m. at Woodland Park
- Saturday—9 a.m. at the UK Arboretum

For more information contact Keith at 254-6850.



# GLSO DIRECTORY

## The GLSO

GLSO Board (Terry).....	255-5469
GLSO Discrimination Project (Jeff).....	296-4170
GLSO: News Calendar (Peter).....	273-9649
Advertisements (Terry).....	255-5469
Layout (Charlie).....	389-9352
Community News (Mary).....	266-5904
GLSO Networking Committee (Mike).....	225-1828
GLSO Speakers Bureau (Mary).....	266-5904
GLSO Support Group (Mary).....	266-5904

## STUDENT GROUPS

ACE League:Berea (Ed).....	623-7312
AGLF: NKU (Pat).....	572-5604
B-GLAD: Centre College (Mykol).....	238-5332
GUESS: ECU (Neil).....	622-5816
Lexington Youth Support Group (Kenneth).....	222-1919
Morehead State (Angela).....	783-2950
Transylvania University (Bill).....	233-8490
UK Lambda (pager).....	244-3344

## ANONYMOUS AIDS TESTING

Jessamine County.....	885-4149
Lexington-Fayette County.....	288-2437
Madison County.....	723-7312
Woodford County.....	873-4541

## AIDS INFO/SERVICES

AIDS HOTLINE.....	(800) 840-2865
AIDS Volunteers, Inc.....	278-7494
AVOL Legal Advocacy Program.....	278-7494
Health Department HIV Support Programs	
(Patty).....	288-2377
(Amanda).....	288-2374
HIV/AIDS Legal Project.....	(502) 584-1254
HIV-Education Youth Group.....	278-7494
HIV Support (Somerset).....	679-7578
.....	678-5814
Kentucky AIDS HOTLINE.....	(800) 840-2865
Thursday HIV+/AIDS Support Group	
(Hospice of the Bluegrass).....	276-5344

## COMMUNITY

Ask Us, Inc.....	255-2374
Bluegrass Belles(Marjorie).....	278-2608
...(Dawn)    dwilsoo@ukcc.uky.edu.(Ann).....	(502)672-8673
Bluegrass COLTS (Mark).....	233-7266
Cumberland Cares.....	561-6763
E-Male (Bill).....	254-9812
Fairness of Lexington HOTLINE.....	275-7812
Fairness of Louisville.....	(502) 893-0788
Front Runners (Keith).....	254-6850
G/L AA (Charlie).....	224-4067
G/L Defense Fund.....	(502) 589-2896
IGBO(Steve).....	276-3058
Kentucky Legislator Message Line.....	(800) 372-7181
Lake Cumberland Gay Alliance(Roger)	
.....	roger@hyperaction.net
The Lesbian & Gay Parenting Group (Laura).....	276-2685
Lexington Men's Chorus (Bill).....	266-9175
Louisville Youth Group.....	(502)894-9787
Names Project, Lexington (Katie).....	272-2588
Pride Center (voice mail).....	255-4016
P-FLAG (Jan).....	278-7461
(Perry).....	(502) 226-5478
Pegasus Travel.....	253-1644
Rainbow Bowling League (Shawn).....	255-7379
Rainbow Cotillion (Laura).....	277-8017
RISC of KY(Paul).....	225-5151
(Steve).....	255-4636
SisterSound (Lee).....	873-7791

## RELIGIOUS GROUPS

Dignity [Catholic] (Don).....	299-4458
Honesty [Southern Baptist](Eddie).....	(502) 637-7609
(Dorothy).....	(501)458-5392
Interweave [Unitarian] (Davina).....	271-6174
MCC-Bowling Green (Rev. Donna).....	(812) 282-9404
MCC-Elizabethtown (Rev. Cathy).....	(800) 484-8498
MCC-Lexington (voice mail).....	255-4016
(Rev. Rex).....	lmccbvr@juno.com
MCC-Louisville (Rev. Dee).....	(502) 775-6636
MCC-Paducah.....	(502) 441-2307
Path of the Personal Divine	
...(multi-traditional) (Chris).....	268-1640
Pagan Forum (Rev. Pat).....	268-1640
RainboWind [Pagan] (Sarah).....	252-7673

**IYG LESBIGAY YOUTH HOTLINE**  
**800-347-TEEN**

7p-midnight Thurs. & Fri.