

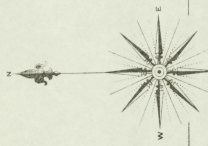
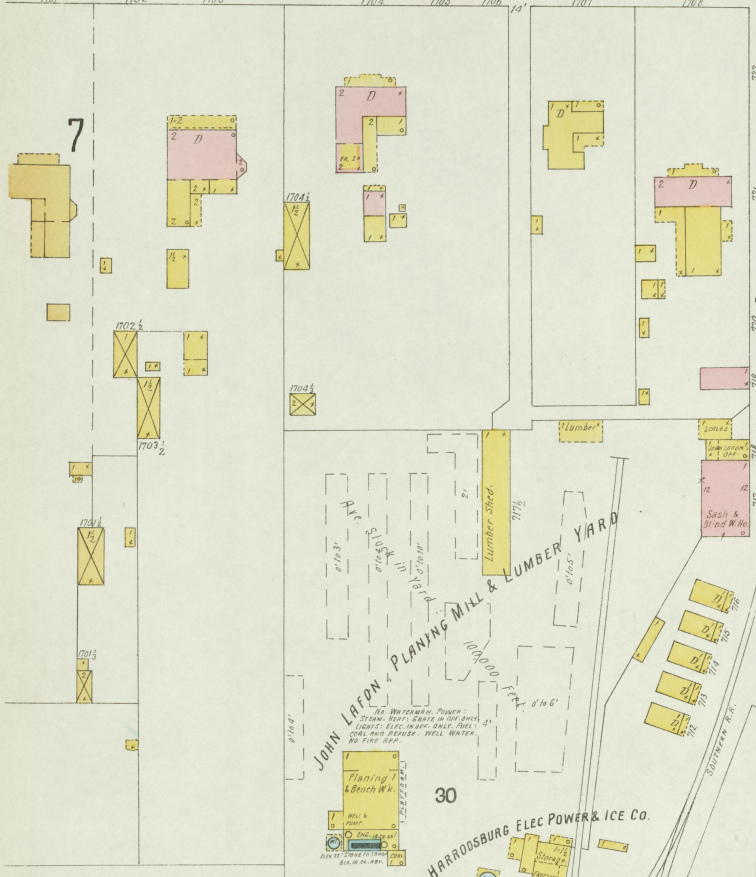


July 1901  
HARRODSBURG  
KY.

N. WARWICK

3 COLLEGE

2

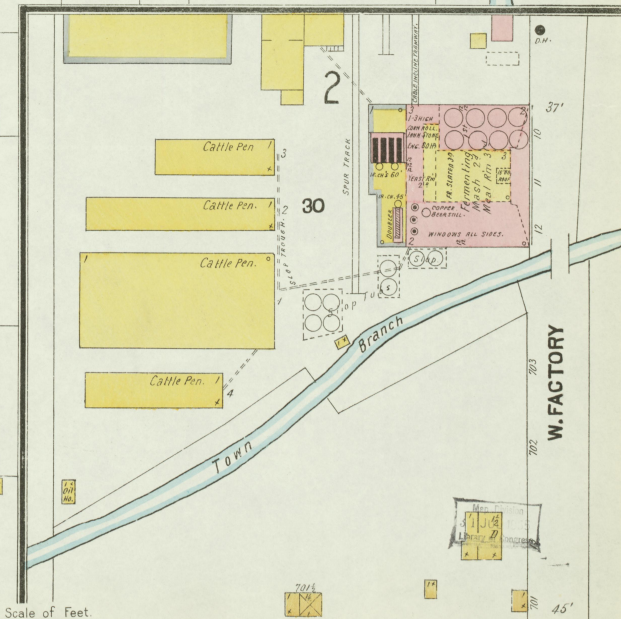


**J. B. THOMPSON,**  
**OLD FORT SPRING DISTILLERY,**  
 Registered Distillery No. 63 84 Dist. Mercer Co. Ky.  
 Mash Copy - 500 Bush per day.  
 Ave. Yield - 4 Gallons per Bush.

**BONDED W. Ho. No. 2,**  
 Pat. Hacks, Copy 17500 Bbls.  
 (R. C.)

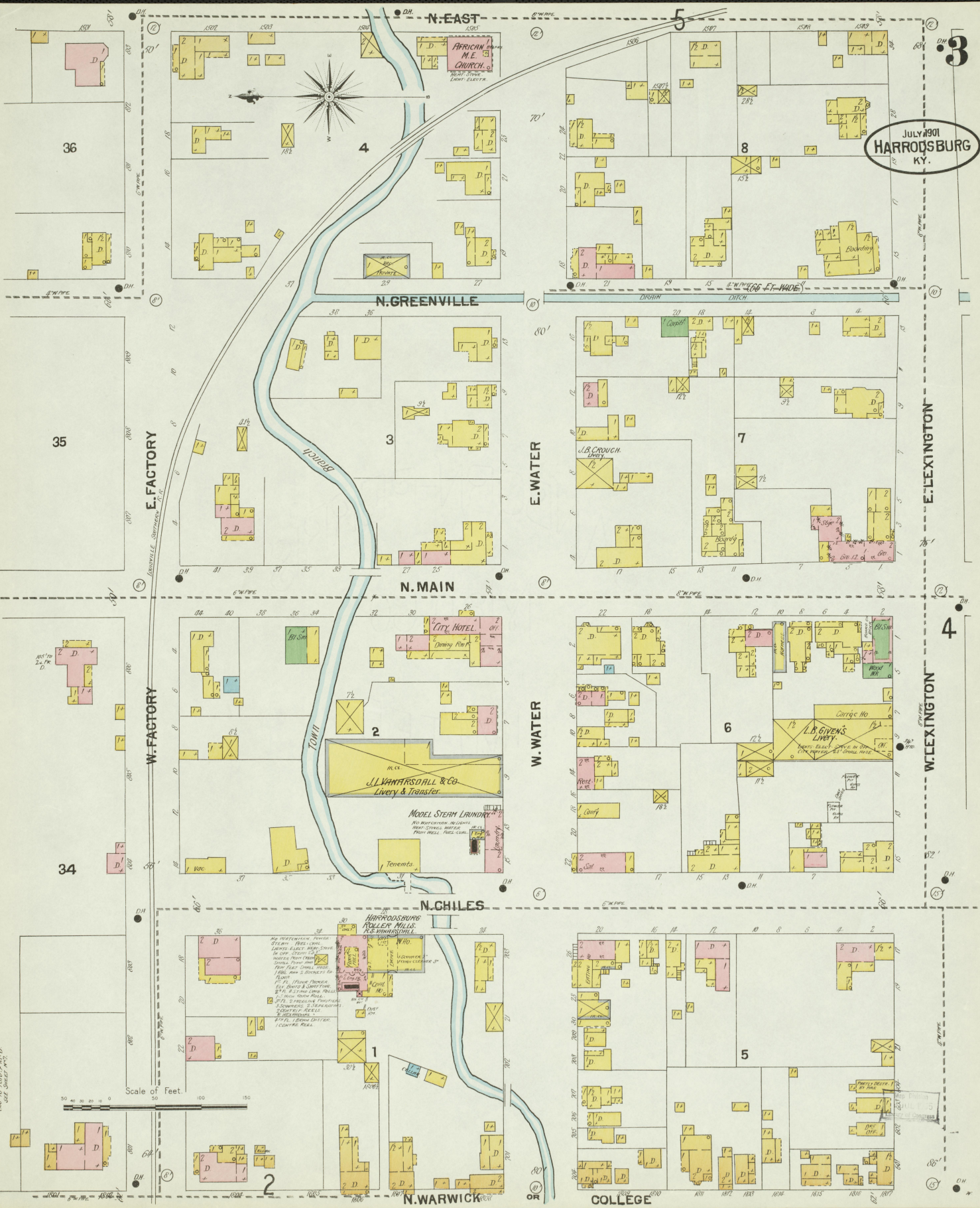
**BONDED W. Ho. No. 1,**  
 Copy 20000 Bbls.  
 (R. C.)

**BONDED W. Ho. No. 3,**  
 Pat. Hacks, Copy 17500 Bbls.  
 (R. C.)



Scale of Feet  
 0 20 40 60 80 100 120 140 160

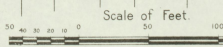
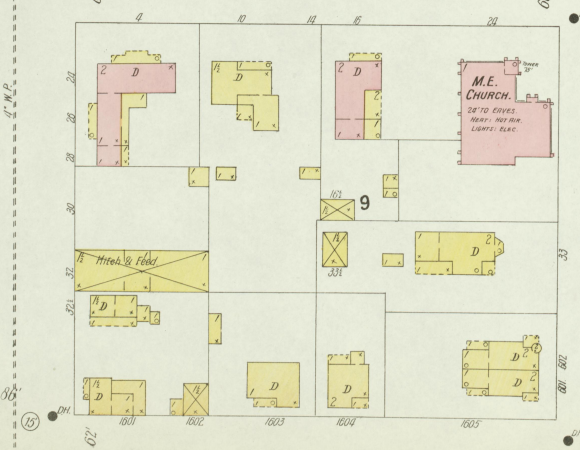
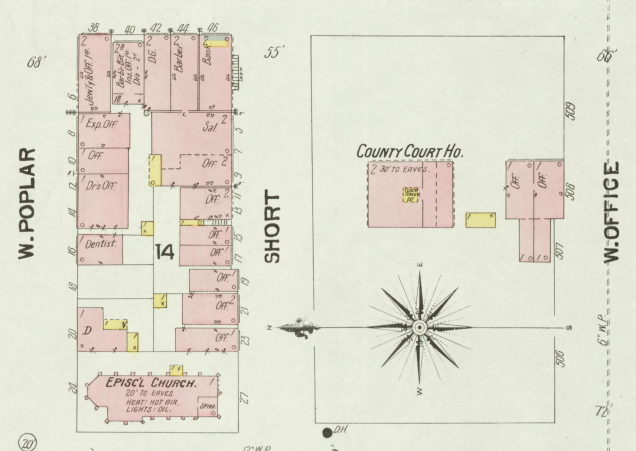
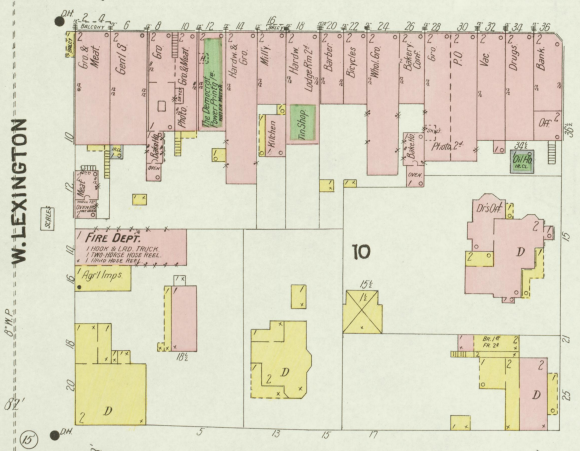
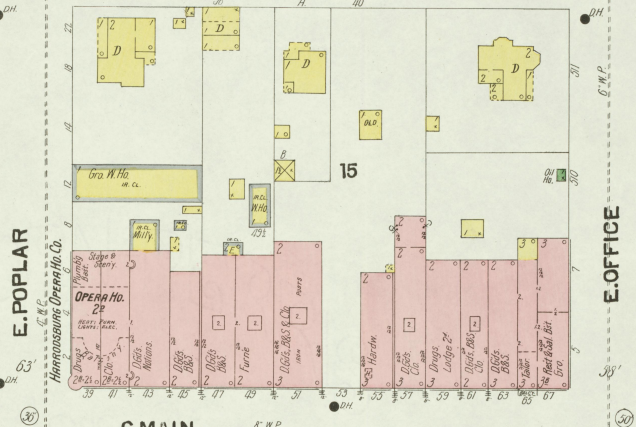
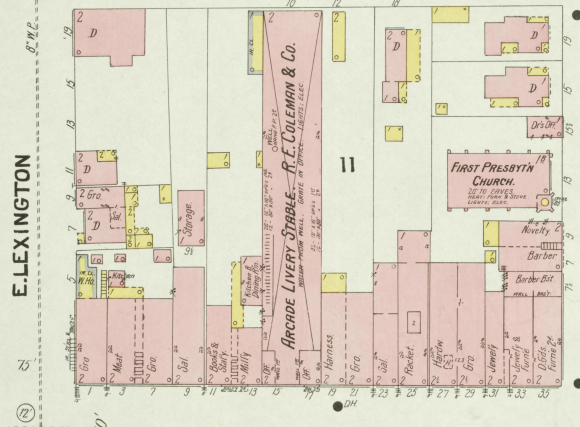
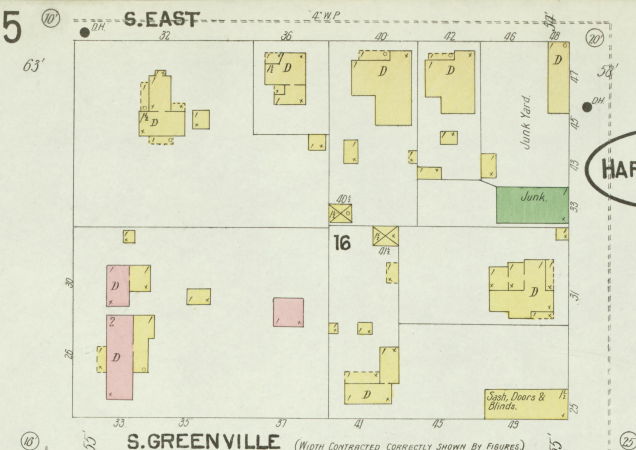
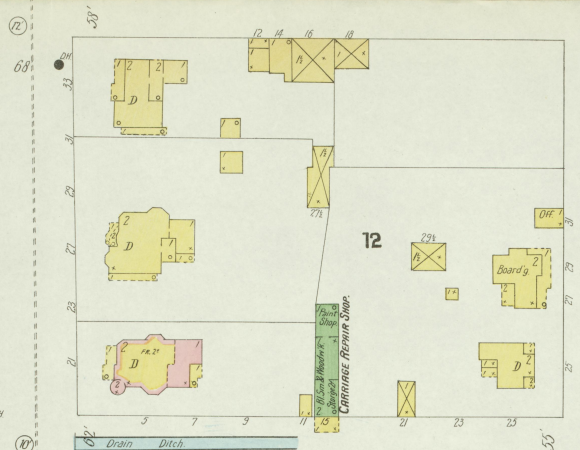
JULY 1901  
HARRISBURG  
KY.



REPRODUCED FROM THE  
CITY OF HARRISBURG

City of Harrisburg  
Engineering Department

JULY 1901  
HARRODSBURG  
KY.



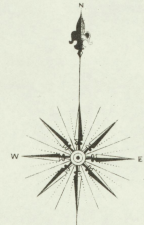
Prepared by  
JULY 1901  
City of Harrodsburg

JULY 1901  
HARRODSBURG  
KY.

5

3

37



LEXINGTON PIKE.

E. LEXINGTON

N. EAST  
S. EAST

DEPOT

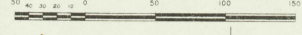
4

23

E. POPLAR

6 E. OFFICE

Scale of Feet.



CITY MILLS.

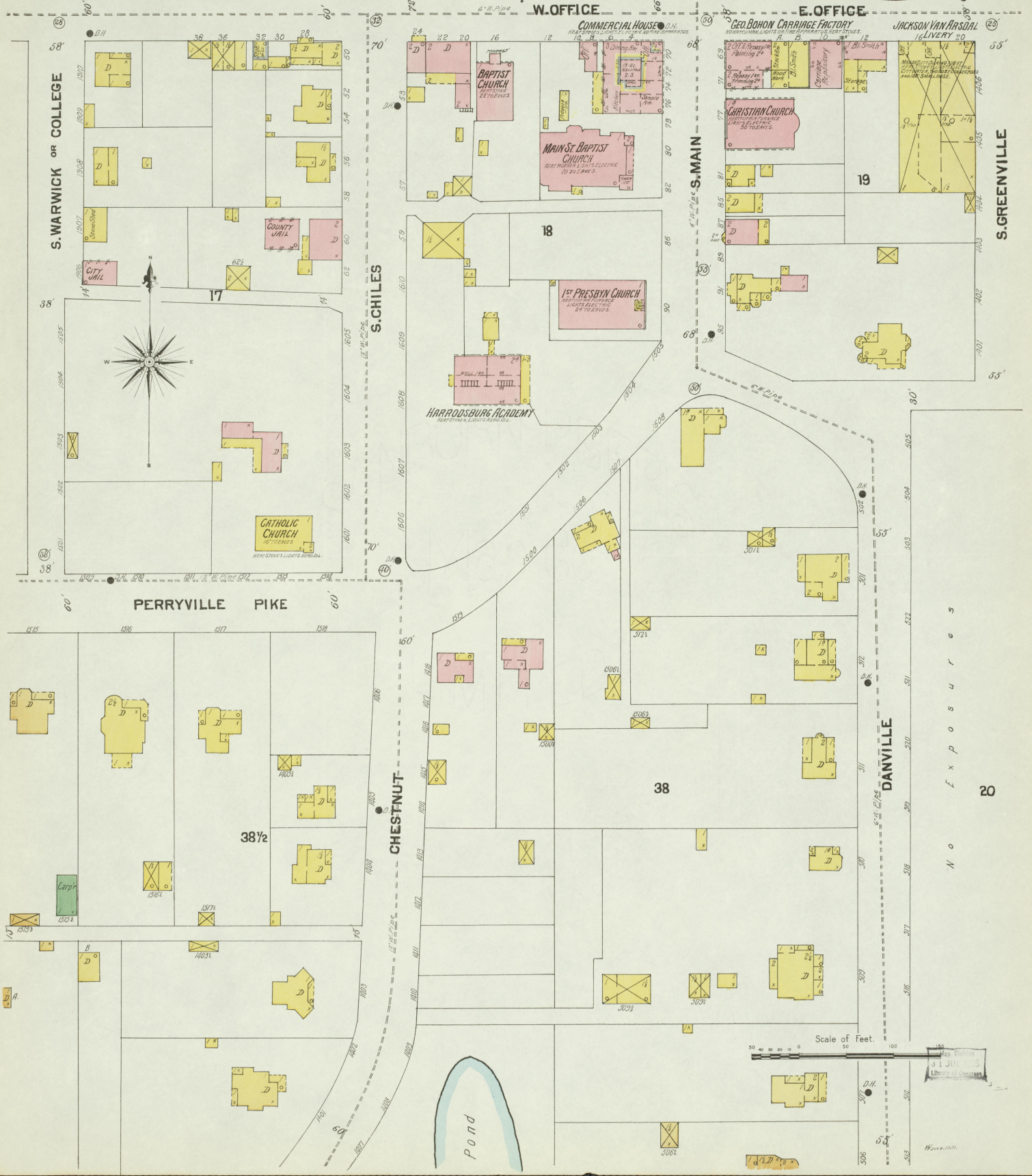
Copy: 60 BNS. per 24 HOURS.  
No. HOURS. PAPER. STAMP. REPT.  
STAMP. PAPER. CASH. LIGHTS. REPT.  
AND CHARGES. WASH. WATER. FINE  
M.F.  
15' COOK MILL. 1 PACKER.  
2 M. 2 SHUT. MACH. 1 MACHINES FURNY  
1 STAMP. MILL. COLLECTOR.  
1 BASKETMASTER.  
1 STAMP. REPT.  
2 SCALERS.  
1 CHANGING ROOM  
25 STAKES OF CLEVER

22

E. OFFICE

7

7

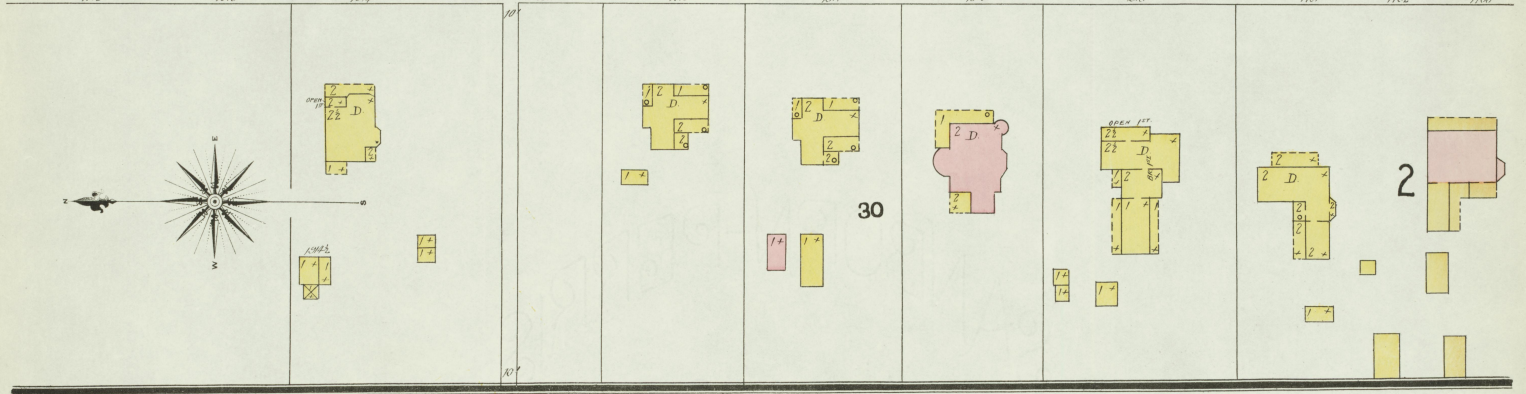


N o E x p o s u r e s

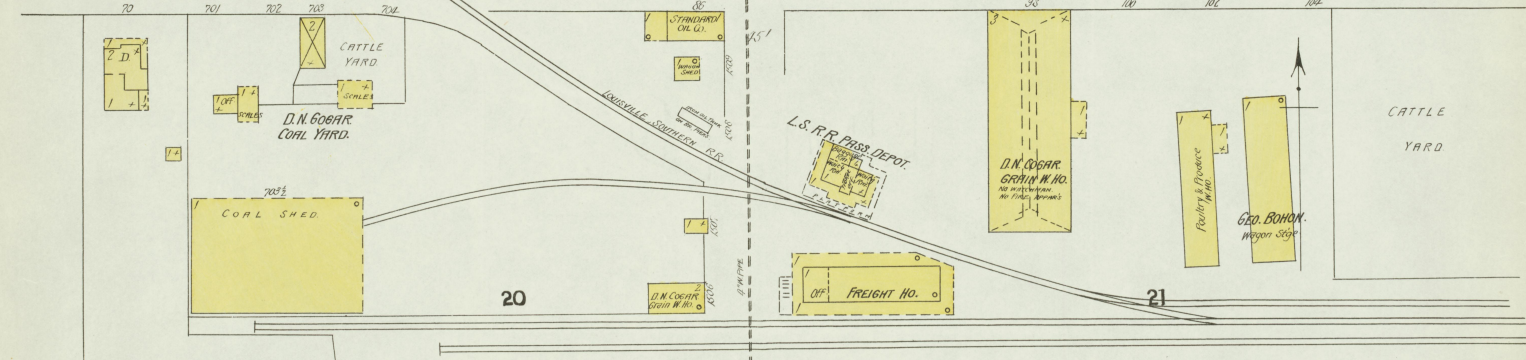
Map Division  
31 JUL 1915  
Library of Congress

N. MAIN ST.  
ABOUT 1/2 MILE N. OF COURT HO.  
HARRODSBURG GRADED SCHOOL  
NEAR 1/2 MILE N. OF HARRODSBURG, KY.  
NO EXPOSURE ANY SIDE.

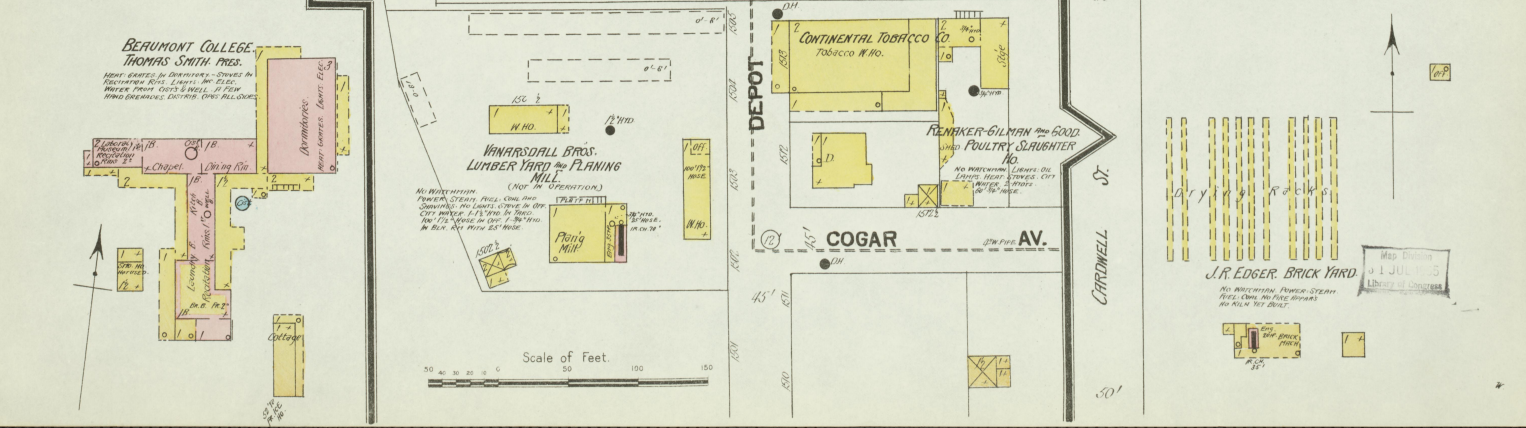
N. WARWICK OR COLLEGE



5 E. OFFICE



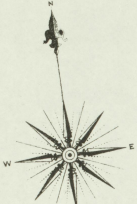
ABOUT 1/2 MILE S. OF COURT HO.



Scale of Feet.  
50 100 150

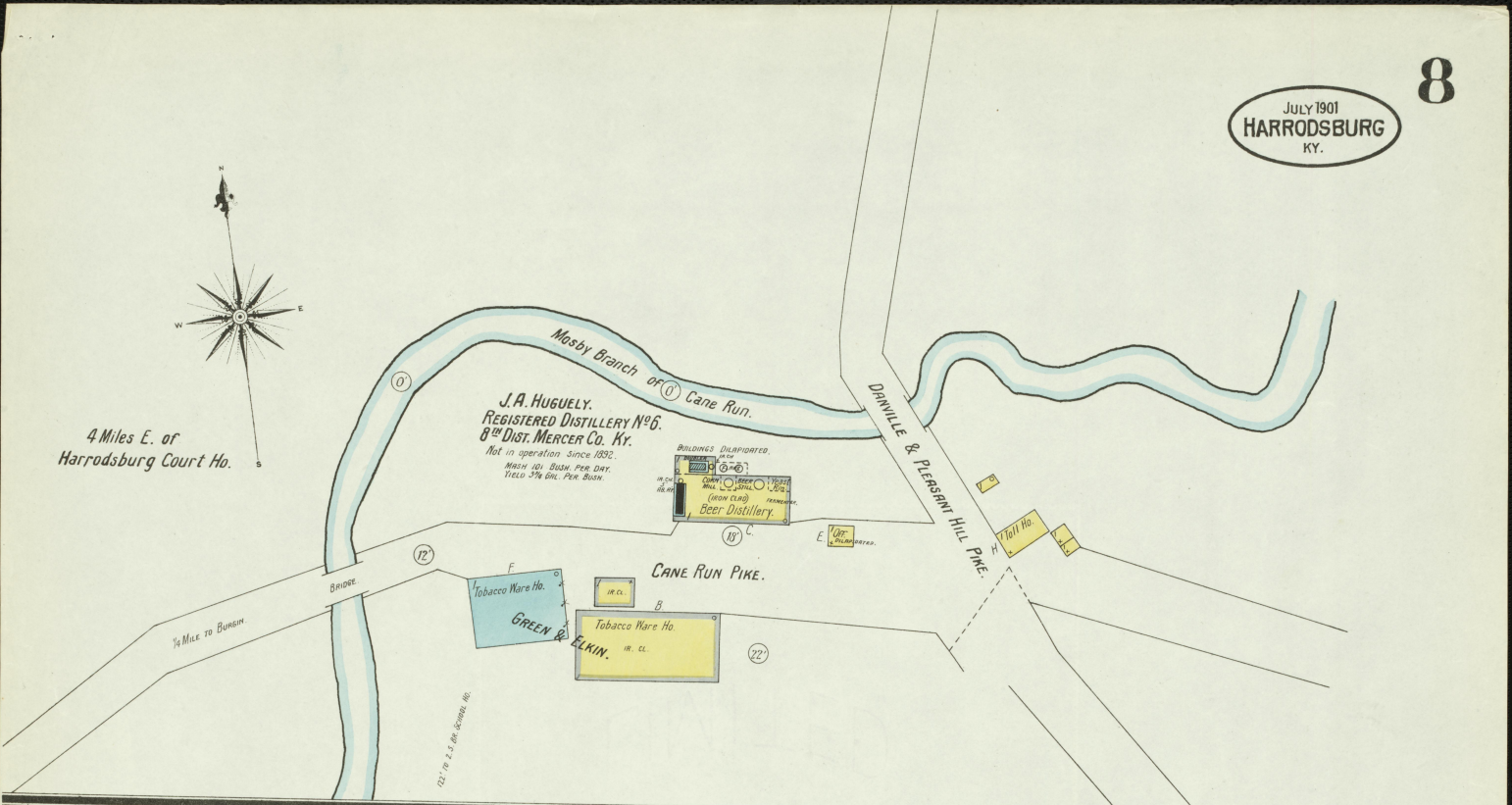
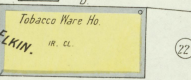
Map Drawn  
JULY 1901  
Library of Congress

JULY 1901  
**HARRODSBURG**  
KY.



4 Miles E. of Harrodsburg Court Ho.

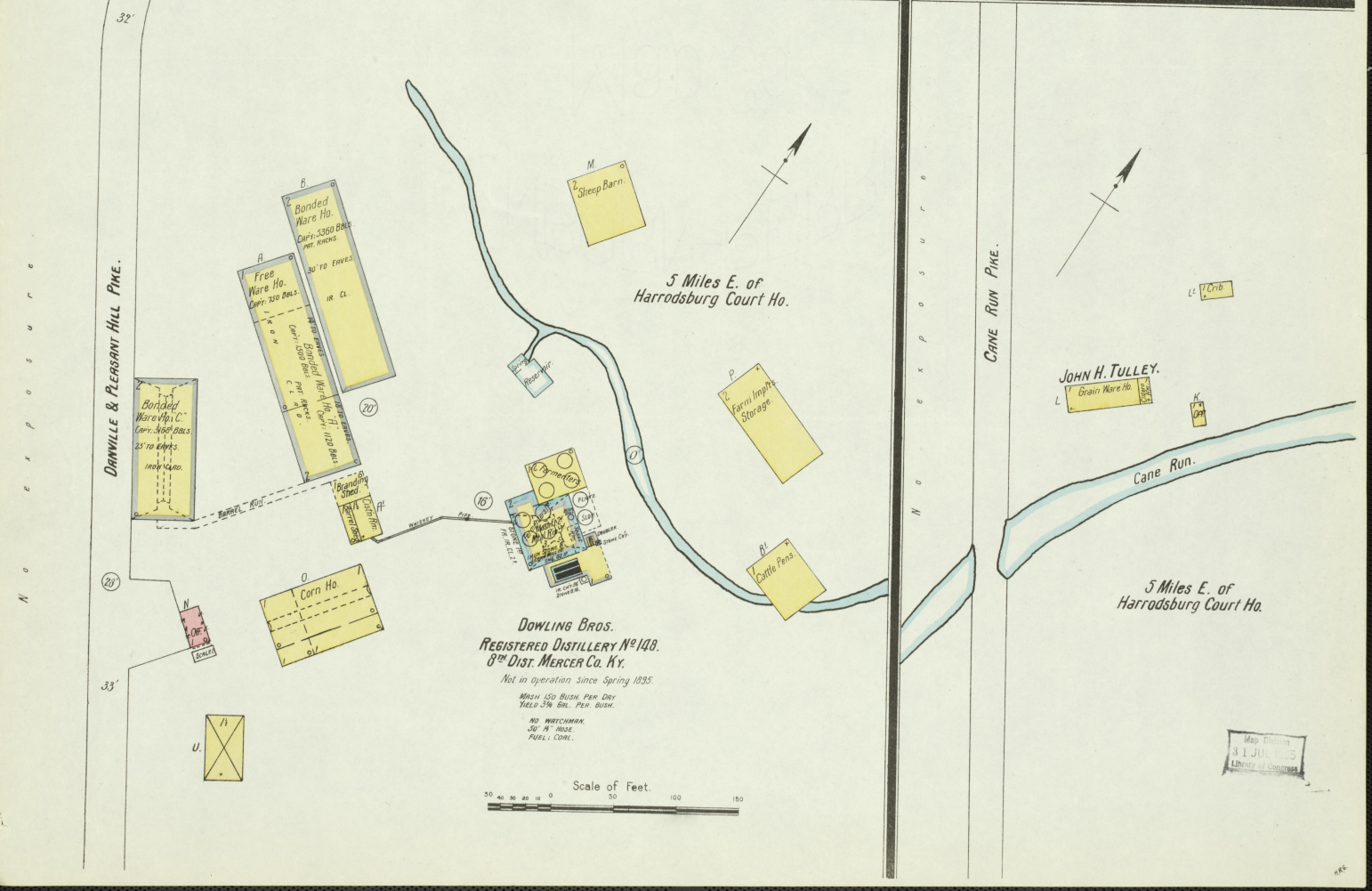
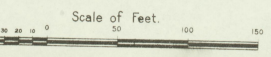
**J. A. HUGUELY.**  
REGISTERED DISTILLERY N<sup>o</sup> 6.  
8<sup>th</sup> DIST. MERCER CO. KY.  
Not in operation since 1892.  
MASH 160 BUS. PER DAY.  
YIELD 3 1/2 GAL. PER BUS.



32'

5 Miles E. of Harrodsburg Court Ho.

**DOWLING BROS.**  
REGISTERED DISTILLERY N<sup>o</sup> 103.  
8<sup>th</sup> DIST. MERCER CO. KY.  
Not in operation since Spring 1895.  
MASH 150 BUS. PER DAY.  
YIELD 3 1/2 GAL. PER BUS.  
NO WITCHMAN.  
30" W. HOLE.  
FUEL: COAL.



**JOHN H. TULLEY.**  
Grain Ware Ho.

5 Miles E. of Harrodsburg Court Ho.

Map Series  
31 JUL 1901  
Library of Congress