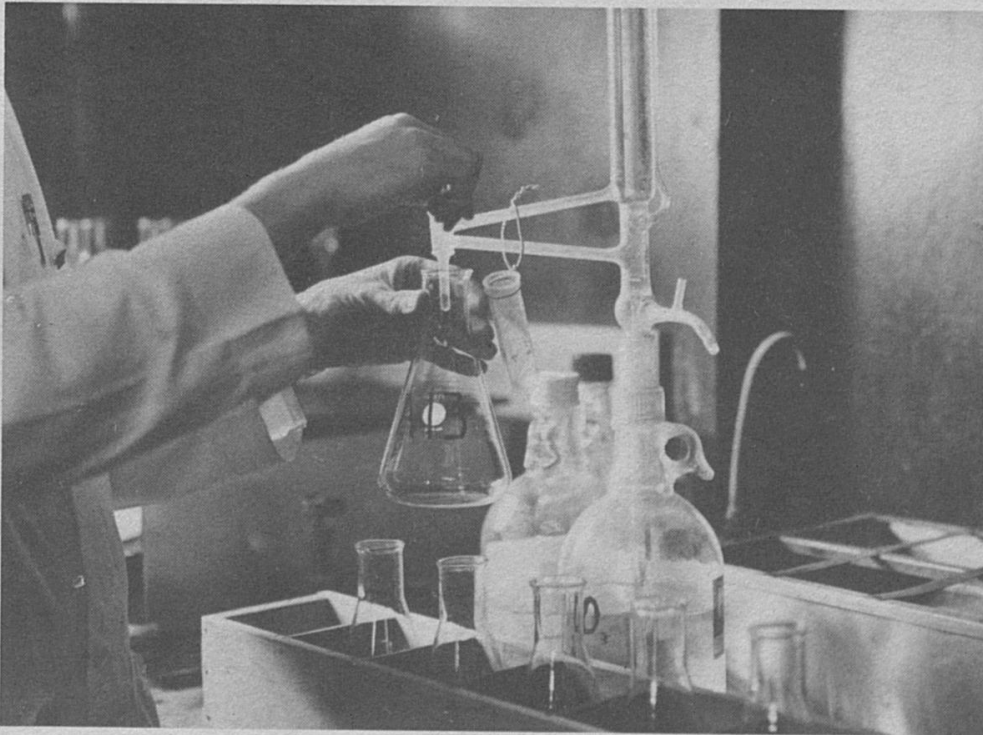


# Commercial Feeds in Kentucky

1967



Laboratory equipment used in analyzing feed samples.

Regulatory Bulletin 198

University of Kentucky  
Agricultural Experiment Station  
Lexington

FEED SECTION  
 DIVISION OF REGULATORY SERVICES  
 KENTUCKY AGRICULTURAL EXPERIMENT STATION  
 Bruce Poundstone, Director  
 Dr. Paul R. Caudill, Assistant Director  
 Glynn E. Williamson, Feed Registrar  
 J.M. Fernandez, Auditor

FIELD INSPECTION

W.M. Routt  
 E.G. Vanderpool  
 \*M.M. Davis

Neville Hulette  
 Ben W. Cox  
 Wallace L. King  
 W. K. Robertson

Joe B. Brown  
 Claude Hensley  
 S.D. Whitehead

LABORATORY

Valva Midkiff  
 J.T. Adair  
 Leokadia Woloszyn  
 Judy Dombroski

J.A. Shrader  
 Dewey H. Newman, Jr.  
 John Ellis  
 \*\*Richard Westmoreland

Barbara Anderson  
 Norma Holbrook  
 Robert N. Price  
 Sue Witt

CONTENTS

Page

Introduction and Feed Monitoring Program.....	3
Estimated Tonnage of Feed Sold in 1967.....	4
Companies with Feed Registered in 1967.....	5
Average Composition of More Common Feedstuffs.....	10
Miscellaneous Samples Analyzed in 1947-1967.....	12
Urea in Feeds.....	13
Changes in Product Names.....	14
How to Label Feeds Containing Antibiotics.....	15
Type A Label.....	16
How to Label Feeds Containing Drugs.....	17
Type B Label.....	18
Table 1 - Report of Official Samples Analyzed 1967..	19
Table 2 - Samples Classified as "Not Passed".....	24

\* Deceased July 1967.

\*\* Resigned June 30, 1967.

#### INTRODUCTION

This bulletin contains the results of inspection and analysis of commercial feeds sold in Kentucky during the calendar year of 1967, and other information helpful to those interested in this field.

During 1967, 3,091 official samples of feed were secured by inspectors. 2,826 or 91% of these passed inspection and analysis satisfactorily. During 1966, 3,006 official samples were secured and 2,528 or 84% of these were passed. The total estimated tonnage of commercial feeds distributed in Kentucky for 1967 was 602,072 tons. In 1966, the tonnage was 584,177 tons.

The feed control section of the Division of Regulatory Services handles all matters concerning feed inspection, registration, analysis, and compliance.

#### FEED MONITORING PROGRAM

All feeds sold in Kentucky must be registered with the Feed Control Section. Registration forms are available upon request. There is no charge for registration. Once registered, it continues in effect until re-registration is called for. Most companies keep all registrations current by cancelling feeds no longer manufactured and by adding new feeds. Inspectors are constantly in the field checking with dealers to assist them with their records and feed manufacturing practices. Inspectors examine labeling and sample feed. Samples are analyzed in the chemical laboratory. Samples that do not come up to the guaranteed analysis are listed in an annual feed bulletin published by the Section. Those companies having seriously deficient feed samples are advised by letter regarding the deficiency and on occasions when the situation is serious, stop sale notices may be issued until the deficiency can be corrected. Feed inspection and analysis is becoming more and more complicated. The Feed Control Program protects the feeder by requiring proper labeling, adequate purpose statements, precautions and warnings where necessary and checking contents of feeds with the guarantees. Manufacturers and dealers are thus enabled to do business on an orderly and equitable basis.

## Commercial Feeds in Kentucky, 1967

ESTIMATED TONNAGE OF SALES BY CLASS OF FEED,  
KENTUCKY, 1967

<u>Mixed Feed</u>	<u>Tons</u>
Calf Feed	7,103
Cattle Feed	29,124
Dairy Feed	106,130
Dog & Cat Feed	21,380
Horse & Mule Feed	17,154
Mineral Feed	7,914
Pig & Hog Feed	135,817
Poultry Mashs	123,086
Rabbit Feed	1,965
Scratch Feed	6,561
Sheep Feed	841
Stock Feed	2,569
Turkey Mashs	3,978
Miscellaneous Mixed Feed	13,528
TOTAL MIXED FEED	<u>477,150</u>
<u>Straight Materials</u>	<u>Tons</u>
Alfalfa Products	2,699
Animal Products	4,839
Barley Products	85
Brewers Products	1,189
Corn Products	33,570
Cottonseed Products	4,879
Distillers Products	6,098
Linseed & Flax Products	264
Molasses	17,523
Oat Products	2,208
Soybean Products	19,080
Wheat Products	23,956
Miscellaneous Products	8,532
TOTAL STRAIGHT MATERIAL	<u>124,922</u>
GRAND TOTAL	602,072

## COMPANIES HAVING FEED REGISTERED, 1967

Abilene Flour Mills Co., Abilene, Ks. 67410  
 Acme-Evans Co., Inc., Indianapolis, In. 46222  
 Adams Packing Assn., Inc., Auburndale, Fl. 33823  
 Ade Farm Chemical Co., Inc., Tiskilwa, Il. 61368  
 Ag Services, Bowling Green, Ky. 42101  
 Agway, inc., Country Best Feeds, Ithaca, N.Y. 14851  
 Albany Mills, Albany, Ky. 42602  
 Albers Milling Co., Los Angeles, Ca. 90036  
 Allen County Seed Ser., Scottsville, Ky. 42164  
 Allen Products Co., Inc., Allentown, Pa. 18104  
 Allied Chemical Corp., Hopewell, Va. 23860  
 Allied Food Distributors, Atlanta, Ga. 30318  
 Allied Mills, Inc., Chicago, Il. 60606  
 Allied Mills, Inc., Libertyville, Il. 60048  
 Alver Brothers Co., Milford, Il. 60953  
 American Crystal Sugar Co., Denver, Co. 80202  
 American Cyanamid Co., Princeton, N.J. 08540  
 American Salt Corp., Des Plaines, Il. 60018  
 Amory Cotton Oil Co., Inc., Amory, Ms. 38821  
 Anderson Co. Farm Service, Lawrenceburg, Ky. 40342  
 Anderson & Spilman, Danville, Ky. 40422  
 Anglo Sweet Feed Mill, Inc., Owensboro, Ky. 42301  
 Anheuser-Busch, Inc., St. Louis, Mo. 63118  
 Animal Nutritionists, Inc., Turlock, Ca. 95380  
 Anvil Mineral Prod. Corp., Bay Springs, Ms. 39422  
 Apex Feed & Supply, Inc., Marietta, Oh. 45750  
 Archer Daniels Midland Co., Minneapolis, Mn. 55440  
 Arkansas Grain Corp., Stuttgart, Ar. 72160  
 Arkansas Rice Growers Coop., Stuttgart, Ar. 72160  
 Armour Creameries, Springfield, Ky. 40069  
 Armour Grocery Products Co., Chicago, Il. 60606  
 Armour & Co., Chicago, Il. 60609  
 Ashland Milling Co. Ashland, Ky. 41101  
 Astor Products, Inc., Jacksonville, Fl. 32203  
 The Attala Co., Kosciusko, Ms. 39090  
 Aubrey Feed Mills, Inc., Louisville, Ky. 40204  
 Auburn Mills, Inc., Auburn, Ky., 42206  
 Aylor & Meyer Co., Aurora, In. 47001  
 Bagdad Roller Mills, Bagdad, Ky. 40003  
 Barker Moore & Mein Co., Inc., Lebanon, Pa. 17042  
 Barton Distilling Co., Bardstown, Ky. 40004  
 Baughman Milling Co., Stanford, Ky. 40480  
 Bay State Milling Co., Leavenworth, Ks. 66048  
 Bay State Milling Co., Winona, Mn. 55987  
 Beacon Div. International Milling Co., Kansas City, Mo. 64116  
 James B. Beam Distilling Co., Clermont, Ky. 40110  
 B. A. Bernard & Co., Inc., Camden, N.J. 08104  
 Best Feeds & Farm Supplies, Oakdale, Pa. 15071  
 Bi-County Farm Bureau Co-op., Florence, Ky. 41042  
 Big Four Feed & Implement Co., Scottsville, Ky. 42164  
 Big Star Products Co., Atlanta, Ga. 30302  
 Birmingham Milling Company, Benton, Ky. 42025  
 Blenda Life, Inc., Green Isle, Mn. 55338  
 Blue Barn Dog Food Co., New Albany, In. 47150  
 Blue River Feed Mills, Inc., Edinburg, In. 46124  
 Bobb Brothers, Leesburg, Oh. 45135  
 Boone Co. Farm Supply, Walton, Ky. 41094  
 Boones Feed Store, Stanford, Ky. 40484  
 Boone Valley Coop. Proc. Assn., Eagle Grove, Ia. 50533  
 Borden Co., Norfolk, Va. 23501  
 Boswell Company, Atlanta, Georgia 30305  
 Bremco Mills, New Bremen, Oh. 45869  
 Brode Corporation, Memphis, Tn. 38101  
 Browder Milling Co., Inc., Fulton, Ky. 42041  
 Brown-Forman Distillers Corp., Louisville, Ky. 40201  
 Brown Molasses Co., Inc., N. Webster, In. 46555  
 Bryant & Crume Milling Co., Caneyville, Ky. 42721  
 Buckeye Cellulose Corp., Louisville, Ky. 40217  
 Buckeye Cellulose Corp., Cincinnati, Oh. 45201  
 Buckeye Cellulose Corp., Memphis, Tn. 38108  
 Buhler Mills, Inc., Buhler, Ks. 67522  
 Buhler Mills, Inc., Lexington, Ky. 40506  
 Burrows Feed Mill, Pendleton, Ky. 40055  
 Bush Brothers & Co., Clinton, Tn. 37716  
 A. C. Butts & Sons, Fulton, Ky. 42041  
 Cadiz Milling Company, Cadiz, Ky. 42211  
 Calhoun & Walthen, Inc., Madisonville, Ky. 42431  
 Caneyville Roller Mill Co., Caneyville, Ky. 42721  
 Cardinal Food Products, Inc., St. Louis, Mo. 63103  
 Carey Salt Company, Hutchinson, Ks. 67501  
 Cargill, Inc., Cincinnati, Oh. 45204  
 Cargill, Inc., Minneapolis, Mn. 55402  
 Carnation Co., Los Angeles, Ca. 90036  
 Carroll Co. Farm Bureau Coop., Carrollton, Ky. 41008  
 Central Soya Co., Inc., Ft. Wayne, In. 46802  
 Central Soya of Clinton, Inc., Clinton, Ky. 42031  
 Central Soya of Kentucky, Louisville, Ky. 40204  
 Chef Pet Foods, Inc., Delavan, Wi. 53115  
 Citizens Milling Co., Somerset, Ky. 42501  
 City Roller Mills, Vevay, In. 47043  
 Clarkson Feed Store, Clarkson, Ky. 42726  
 Cleveland Milling Company, Cleveland, Tn. 37311  
 Climax Mills, Shelbyville, Ky. 40065  
 Clinton Corn Processing Co., Clinton, Ia. 52733  
 H. C. Cole Milling Co., Chester, Il. 62233  
 Colonial Stores, Inc., Atlanta, Ga. 30302  
 Colorado Milling & Elevator, Denver, Co. 80201  
 Columbian Hog & Cattle Powder, Kansas City, Mo. 64129  
 Comet Rice Mills, Houston, Texas 77001  
 Community Milling Company, Irvington, Ky. 40146  
 Community Feed Mill, Belton, Ky. 42324  
 Consolidated Mills, Inc., Blissfield, Mi. 49228  
 Continental Chinchillas, Inc., Louisville, Ky. 40214  
 Cooperative Mills, Baltimore, Md. 21203  
 Corn Products Co., New York, N. Y. 10022  
 Cosby-Hodges Milling Co., Birmingham, Al. 35201  
 Craft Feed & Grain, Catlettsburg, Ky. 41129  
 Crafton-Duncan, Inc., Henderson, Ky. 42420  
 Crescent Roller Mills, Inc., Taylorsville, Ky. 40071  
 Crestwood Farmers Supply Center, Crestwood, Ky. 40014  
 Cumberland Milling Co., Clarksville, Tn. 37040  
 Custom Feed Mills, Morganfield, Ky. 42437

- Darling & Co., Chicago, Il. 60609  
 Darling & Company, Cincinnati, Oh. 45215  
 Darling & Company, Reading Oh. 45215  
 Dawes Laboratories, Inc., Chicago, Il. 60632  
 Dearborn Mills, Aurora, In. 47001  
 Decatur Cotton Oil Co., Decatur, Al. 35601  
 Delta Oil Mill, Inc., Jonestown, Ms. 38639  
 Delta Rice, Inc., Hollandale, Ms. 38748  
 Diamond Crystal Salt Co., St. Clair, Mi. 48079  
 Diamond Laboratories, Des Moines, Ia. 50303  
 Diamond V. Mills, Inc., Cedar Rapids, Ia. 52407  
 Dicken Mill, Mentor, Ky. 41060  
 Dixie Mills, Co., E. St. Louis, Il. 62202  
 Dixie Portland Flour Mills, Arkansas City, Kansas 67005  
 Dixie Portland Flour Mills, Chattanooga, Tn. 37401  
 Dixie Portland Flour Mills, Memphis, Tn. 38101  
 Doane Feed Products Co., Joplin, Mo. 64801  
 Duncan-McFarland Farm Service, Lawrenceburg, Ky. 40342  
 Dunnington Milling Co., Monticello, Ky. 42633  
 Durant Milling Co., Durant, Ok. 74701  
 Dyersburg Oil Mill Co., Dyersburg, Tn. 38024  
 Emge Packing Co., Inc., Ft. Branch, In. 47533  
 F. L. Emmert Co., Inc., Cincinnati, Oh. 45214  
 John W. Eshelman & Sons, Lancaster, Pa. 17604  
 Evans Milling Co., Indianapolis, In. 46206  
 John Ewing Co., LaSalle, Co. 80645  
 Fabro, Inc., Atlanta, Georgia 30318  
 Fabro of Georgia, Inc., Atlanta, Ga. 30318  
 Famous Feed Mills, Nashville, Tn. 37201  
 Farm Bureau Milling Co., Hammond, In. 46320  
 Farm Service Center, Inc., Beaver Dam, Ky. 42320  
 Farm Services, Inc., Glasgow, Ky. 42141  
 Oscar Farmer & Sons, Louisville, Ky. 40203  
 Farmers Feed Mill, Lexington, Ky. 40508  
 Farmers Feed Store, Central City, Ky. 42330  
 Farmers Friend Mineral Co., Napoleon, Oh. 43545  
 Farmers & Ginners Cotton Oil Co., Birmingham, Al. 35201  
 Farmers & Merchants Milling, Brooksville, Ky. 41004  
 Farmers Service Center, Beaver Dam, Ky. 42320  
 Farmers Supply of Ohio County, Inc., Beaver Dam, Ky. 42320  
 Farmers Supply Co., Springfield, Ky. 40069  
 Farmers Supply & Produce Co., Monticello, Ky. 42633  
 Farmers Tankage Co., Henderson, Ky. 42420  
 Farmington Sweet Feed Mill, Farmington, Ky. 42040  
 J. H. Fedders, Inc., Covington, Ky. 41014  
 Feed Service Corp., Crete, Nb. 68333  
 Ferguson Brothers Feed Mill, Albany, Ky. 42402  
 Ferneau Grain Co., Cincinnati, Oh. 45227  
 Field Packing Co., Inc., Owensboro, Ky. 42301  
 Finch Packing, N. Vincennes, In. 47591  
 Fischer Packing Co., Louisville, Ky. 40201  
 Fish Meal Co., Morgan City, La. 70380  
 Fleischmann Distilling Corp., Owensboro, Ky. 42301  
 Fleming Laboratories, Inc., Charlotte, N. C. 28208  
 Flour Mills of America, Inc., Kansas City, Mo. 64142  
 Folsomdale Milling Co., Boaz, Ky. 42027  
 Foremost Dairies, Inc., San Francisco, Ca. 94111  
 Fort Negley Mills, Nashville, Tn. 37203  
 Fortune Feed Mills, Lebanon, Tn. 37087  
 Foster Canning, Inc., Napoleon, Oh. 43545  
 Francis Wholesale Co., Prestonburg, Ky. 41653  
 R. T. French Manufacturers, Rochester, N.Y. 14609  
 Frosty Morn Meats, Clarksville, Tn. 37041  
 Henry Fruechtenicht Co., Inc., Louisville, Ky. 40202  
 Fruen Milling Co., Minneapolis, Mn. 55403  
 Fuhrer-Ford Mill Co., Inc., Mt. Vernon, In. 47620  
 Gallatin Co. Farm Supply, Warsaw, Ky. 41095  
 Gamaliel Feed & Farm Supply, Gamaliel, Ky. 42140  
 Garrard Mills, Lancaster, Ky. 40444  
 J. I. Gates Milling Co., Columbus, Oh. 43222  
 General Distributing Co., National Stockyards, Il. 62071  
 General Foods Corp. Corn Mill, Kankakee, Il. 60901  
 General Foods Corp. Gaines, White Plains, N.Y. 10605  
 General Mills, Inc., Minneapolis, Mn. 55440  
 General Packing Co., Waynesville, Oh. 45068  
 Germantown Milling Co., Germantown, Ky. 41044  
 Gethsemani Farms, Trappist, Ky. 40073  
 Gilster Milling Co., Chester, Il. 62233  
 Glenmore Distilleries Co., Louisville, Ky. 40202  
 Glenmore Distilleries Co., Owensboro, Ky. 42301  
 Gold Seal Products Co., Birmingham, Al. 35203  
 Goldenrod Oil Meal Sales Co., Memphis, Tn. 38101  
 Gooch Feed Mill Co., Lincoln, Nb. 68501  
 Good-Life Chemicals, Inc., Effingham, Il. 62401  
 W. R. Grace & Co., St. Louis, Mo. 63105  
 W. R. Grace Agri. Products Div., Atlantic, Iowa 50022  
 Grain Processing Corp., Muscatine, Ia. 52761  
 Grant Co. Farm Supply, Dry Ridge, Ky. 41035  
 Grayson Milling Co., Grayson, Ky. 41143  
 The Great A & P Tea Co., Inc., Brockport, N.Y. 14420  
 Great Lakes Pet Food Co., Hammond, In. 43625  
 Green Co. Milling Co., Greensburg, Ky. 42743  
 Green Valley Farm Supply Inc., Island, Ky. 42350  
 Griffin Fertilizer Co., Butler, Ky. 41006  
 Griffin Packing Co., Danville, Ky. 40422  
 Gulf Oil Corp., Chem. Dept., Sturgis, Ky. 42459  
 Guthrie Farm Service, Harrodsburg, Ky. 40330  
 Guthrie Feed Mill, Guthrie, Ky. 40330  
 Earl Hale & Son, Jasper, Ohio 45642  
 Hales & Hunter Co., Chicago, Il. 60606  
 Hardin Co. Milling Co., Elizabethtown, Ky. 42701  
 Hardin Feed Mill, Hardin, Ky. 42048  
 Hardy Salt Co., St. Louis, Mo. 63166  
 Harlan Farmers Supply Co., Harlan, Ky. 40831  
 Harpeth Mills, Nashville, Tn. 37203  
 Hartz Mountain Products, N. Y., N.Y. 10003  
 Harvest Brand, Inc., Pittsburg, Ks. 66762  
 T. J. Haycraft Sales & Service, Leitchfield, Ky. 42754  
 Haydon Mill & Grain Co., Springfield, Ky. 40069  
 Haynes Milling Co., Inc., Portland, In. 47371  
 Haynie Products Inc., Baltimore, Md. 21230

- Heaven Hill Distilleries, Bardstown, Ky. 40004  
 Dr. Heinz Co., Bloomingburg, Oh. 43106  
 Dr. Heinz Co., Washington Court House, Oh. 43160  
 Henderson Feed & Commission, Henderson, Ky. 42420  
 Burch Hester Feed Store, Hustonville, Ky. 40437  
 Hi-Acres Concentrate, Inc., Orlando, Fl. 32804  
 Hi-Life Packing Co., Chicago, Il. 60603  
 Hi-Vi Dog Food Co., Rush Springs, Ok. 73082  
 Hickman Co. Feed Mill, Clinton, Ky. 42031  
 Hill Packing Co., Topeka, Ks. 66601  
 Hinton Hatchery, Inc., Ashland, Ky. 41101  
 Frank Hinton & Son, Plummers Landing, Ky. 41089  
 Hobbs Feed & Supply, Fancy Farm, Ky. 42039  
 Hodgenville Roller Mills, Hodgenville, Ky. 42748  
 Holly Sugar Corp., Colorado Springs, Co. 80901  
 Home Milling Co., Inc., Greenville, Ky. 42345  
 Honegger's & Co., Inc., Fairbury, Il. 61739  
 Hooker Chemical Co., Jeffersonville, In. 47130  
 Hoosier Mineral Feed Co., Greenwood, In. 46142  
 Hopkinsville Milling Co., Hopkinsville, Ky. 42240  
 Horlicks Corp., Racine, Wi. 53404  
 Howdy Distributing Co., Williamstown, W. Va. 26187  
 Hubinger Co., Keokuk, Ia. 52632  
 Hudsons Farm Service, Franklin, Ky. 42134  
 Huff & Puff Pet Foods, Inc., Reedville, Va. 22539  
 Humphreys Mills, Memphis, Tn. 38102  
 Hunter Milling Co., Wellington, Ks. 67152  
 Hygrade Food Products Corp., Detroit, Mi. 48214  
 Igleheart Bros., Evansville, In. 47707  
 Illinois Cereal Mills, Inc., Paris, Il. 61944  
 I. F. Imbs Milling Co., St. Louis, Mo. 63110  
 Indiana Farm Bureau Coop. Assn., Indianapolis, In. 46204  
 Industrial Molasses Corp., Leonia, N. J. 07605  
 International Mineral & Chemical Corp., Skokie, Il. 60077  
 International Milling Co., Minneapolis, Mn. 55415  
 International Salt Co., Inc., Clarks Summit, Pa. 18411  
 Jersey Security Co., Minneapolis, Mn. 55415  
 Jewel Companies, Barrington, Il. 60010  
 I. S. Joseph Co., Inc. Minneapolis, Mn. 55415  
 K & K Manufacturing, Inc., Rogers, Mn. 55374  
 E. Kahn's Sons Co., Cincinnati, Oh. 45225  
 Kal Kan Foods, Inc., Los Angeles, Ca. 90058  
 Kaler Milling Co., Symsonia, Ky. 42082  
 Kane Molasses Laboratories, Mt. Pulaski, Il. 62548  
 Kansas Milling Co., Wichita, Ks. 67214  
 Keco Milling Co., McKenzie, Tn. 38201  
 Keller Hay & Grain Co., Newport, Ky. 41072  
 Kentucky Animal By-Products, Russellville, Ky. 42276  
 Kentucky By-Products Corp., Louisville, Ky. 40211  
 Kentucky Chemical Industries, Cincinnati, Oh. 45232  
 Keynes Brothers, Logan, Oh. 43138  
 Kimbell-Diamond Milling Co., Ft. Worth, Tx. 76101  
 Kingston Farmers Exchange, Inc., Kingston, Oh. 45646  
 Klarer of Kentucky, Inc., Louisville, Ky. 40201  
 Knauf & Tesch Co., Chilton, Wi. 53014  
 Knifley Feed & Supply, Elkhorn, Ky. 42733  
 H. C. Knoke & Co., Chicago, Il. 60650  
 Kraft Foods Co., Chicago, Il. 60612  
 Kroger Co., Cincinnati, Oh. 45202  
 Kuder Pulp Citrus Sales Co., Lake Alfred, Fl. 33850  
 La Crosse Milling Co., Cochrane, Wi. 54622  
 Lake Co. Oil Mill, Tiptonville, Tn. 38079  
 Land O'Lakes Creameries, Inc., Minneapolis, Mn. 55413  
 Edmond J. Lang, New Rochelle, N. Y. 10802  
 Lark, Boone, Iowa 50036  
 Lauhoff Grain Co., Danville, Il 61832  
 Harry L. Laws & Co., Inc., New Orleans, La. 70130  
 Lewisburg Roller Mills, Lewisburg, Ky. 42256  
 Lexington Roller Mills, Inc., Lexington, Ky. 40506  
 Lilly Brothers Seed Co., Hopkinsville, Ky. 42240  
 Liv-A-Snaps, Inc., St. Paul, Mn. 55105  
 Livestock Industries, Inc., Park City, Ky. 42160  
 Livestock Supply Co., Owensboro, Ky. 42302  
 Loft-Dahlgren, Inc., Crookston, Mn. 56716  
 Lofton's Feed & Grain, Clay, Ky. 42404  
 Loncala Phosphate Co., High Springs, Fl. 32643  
 Louisa Supply Co., Inc., Louisa, Ky. 41230  
 Lowes Feed & Hatchery, Bowling Green, Ky. 42101  
 Lowes Pellets & Grain, Inc., Greensburg, In. 47240  
 Lubbock Cotton Oil Mill Co., Lubbock Tx. 79408  
 Lynn Grove Milling Co., Lynn Grove, Ky. 42062  
 M.F.A. Grain Division, Mexico, Mo. 65265  
 Magic Feed Mills, Inc., Paoli, In. 47454  
 Manard Molasses Company, New Orleans, La. 70130  
 Manko Co., Inc., Ocala, Fl. 32670  
 Marblehead Lime Co., Chicago, Il. 60606  
 Marion Feed Mills, Marion, Ky. 42064  
 Martin Sales Co., Toledo, Oh. 43606  
 Masonite Corp., Chicago, Il. 60606  
 Master Feed Corp., Lexington, Ky. 40508  
 Mavar Shrimp & Oyster Co., Biloxi, Ms. 39530  
 Mayes-Helm & Coyle, Perryville, Ky. 40468  
 Mayfield Milling Co., Inc., Mayfield, Ky. 42066  
 Mayfield Sweet Feed Mill, Mayfield, Ky. 42066  
 Mayflower Mills, Fort Wayne, In. 46801  
 McCauley Bros. Seed Co., Versailles, Ky. 40383  
 J. A. McDonald & Sons, Rogersville, Tn. 37857  
 McGahan & Co., Paintsville, Ky. 41240  
 McInnis Co., Pulaski, Tn. 38478  
 McKnight-Keaton Grocery Co., Sikeston, Mo. 63801  
 McRedmond Brothers, Nashville, Tn. 37210  
 McWhorter Brothers, Albany, Ky. 42602  
 Meadows Feed & Bldg. Supply, Clay City, Ky. 40312  
 Medley Distilling Co., Owensboro, Ky. 42301  
 Mennel Milling Co., Fostoria, Ohio 44830  
 Metzger Brothers, Paducah, Ky. 42001  
 Michigan Salt Company, St. Louis, Mi. 48880  
 Micro-Lite, Inc., Emporia, Ks. 66801  
 Mid-South Feeds, Inc., Nashville, Tn. 57209  
 Mid-South Milling Co., Memphis, Tn. 38106  
 Mid-State Molasses Co., Franklin, Tn. 37046

- Middlesboro Milling Co., Middlesboro, Ky. 40965  
Midget Mills, Somerset, Ky. 42501  
Midwest Feeds Co., Cincinnati, Oh. 45215  
S. E. Mighton Co., Bedford, Ohio 44014  
Milk Specialties, Inc., Dundee, Il. 60118  
Model Mills, Georgetown, Ky. 40324  
Model Mill Co., Jackson, Tn. 38301  
Mohawk Milling Co., Newport, Tn. 38721  
August Moldenhauer Mill, Menfro, Mo. 63765  
M.O.M. Distributors, Inc., St. Cloud, Mn. 56301  
Monarch Feed Mills, Inc., Dexter, Mo. 63841  
Monarch Milling Co., Mt. Sterling, Ky. 40353  
Monroe Brothers Sweet Feed Mill, Cave City, Ky. 42127  
Monroe Co. Farmers Service, Tompkinsville, Ky. 42167  
Monroe Sweet Feed Mill, Tompkinsville, Ky. 42167  
Moore Lowry Flour Mills, Kansas City, Mo. 64112  
Moorman Manufacturing Co., Quincy, Il. 62302  
Morgan Packing Co., Inc., Austin, In. 47102  
Morgantown Feed Mill, Morgantown, Ky. 42261  
Mor-Milk Co., Dixon, Il. 61021  
John Morrell & Co., Chicago, Il. 60604  
Morton Salt Co., Chicago, Il. 60606  
L. A. Mosher Co., Atlanta, Ga. 30301  
Mother's Cookie Co., Louisville, Ky. 40216  
Mowat, Wilson & Co., Detroit, Mi. 48235  
Munfordville Milling Co., Munfordville, Ky. 42765  
Murphy Grain & Milling Co., Owensboro, Ky. 42301  
Mutual Products Co., Minneapolis, Mn. 55401  
Henry Nagel & Son, Cincinnati, Oh. 45214  
Naremmo, Inc., Springfield, Mo. 65805  
Nashville Cotton Oil Mill Co., Nashville, Tn. 37202  
National Alfalfa Dehydrating & Milling Co., Shawnee Mission, Ks. 66201  
National Alfalfa Dehydrating & Milling Co., Overland Park, Ks. 62202  
National Biscuit Co., New York, N. Y. 10022  
National Biscuit Co., Toledo, Oh. 43603  
National Distillers Products, Cincinnati, Ohio 45246  
National Molasses Co., Cincinnati, Oh. 45201  
National Molasses Co., Willow Grove, Pa. 19090  
National Oats Co., E. St. Louis, Il. 62205  
National Oats Co., Cedar Rapids, Ia. 52402  
National Packing Co., Greenville, Ms. 38701  
National Starch & Chemical Corp., Indianapolis, In. 46221  
Neumond, Inc., St. Louis, Mo. 63110  
New Era Milling Co., Arkansas City, Ks. 67005  
Nicholas Co. Feeders Supply, Carlisle, Ky. 40311  
Nipak, Inc., Dallas, Tx. 75221  
Nopco Chemical Co., Newark, N. J. 07101  
Northern Ohio Sugar Co., Denver, Co. 80217  
Northern Ohio Sugar Co., Findlay, Oh. 45840  
Northern Ohio Sugar Co., Fremont, Oh. 43420  
Norwich Animal Industry Inc., New York, N.Y. 13815  
Charles Nunn & Sons Milling, Evansville, In. 47712  
Nutrena Mills, Inc., Minneapolis, Mn. 55402  
Ohio Blenders, Inc., Toledo, Oh. 43611  
Old Stanley Distillery, Inc., Stanley, Ky. 42375  
Orleans Canning Co., Chicago, Il. 60603  
Orleans Dog Candy Co., Chicago, Il. 60603  
Osceola Products Co., Osceola, Ar. 72370  
Owensboro Grain Co., Inc., Owensboro, Ky. 42301  
Owensboro Milling Co., Owensboro, Ky. 42301  
Pacific Molasses Co., San Francisco, Ca. 94105  
Packmaster, Inc., Cincinnati, Oh. 45208  
Packers By-Products Co., St. Louis, Mo. 63177  
Pan American Mills, Bowling Green, Ky. 42101  
Pan Pacific Fisheries, Inc., Terminal Island, Ca. 90731  
Phillip R. Park, Inc., San Pedro, Ca. 90731  
Paymaster Oil Mill Co., Bossier City, La. 71010  
Paymaster Oil Mill Co., Phoenix, Az. 85002  
Pearl Packing Co., Inc., Madison, In. 47250  
Peavy Co. Flour Mills, Minneapolis, Mn. 55415  
Pedrick Laboratories, Sand Springs, Ok. 74063  
Pendleton County Mills, Falmouth, Ky. 41040  
Penick & Ford Limited, Inc., Cedar Rapids, Ia. 52406  
Stanley Penn & Sons, Lexington, Ky. 40508  
Perk Foods Co., Div. Vets, Chicago, Il. 60610  
Chas. Pfizer & Co., Inc., New York, N. Y. 10017  
Phillips Roxane Div., Kansas City, Ks. 66106  
Phillips Petroleum Co., Bartlesville, Ok. 74004  
Pierce & Williams, Hopkinsville, Ky. 42240  
Pillsbury Co., Minneapolis, Mn. 55403  
Pittsburgh Plate Glass Co., Red Wing, Mn. 55066  
Plains Coop. Oil Mill, Lubbock, Tx. 79408  
Planters Manufacturing Co., Clarksdale, Ms. 38614  
Planters Oil Mill, Tunica, Ms. 38676  
Portland Feed Mill & Sup., Portland, Tn. 37148  
Price-Wilhoite Co., Frederick, Md. 21701  
Princeton Mills, Princeton, Ky. 42445  
Producers Farm Center, Clinton, Ky. 42031  
Provoco Feeds & Concentrates, Botkins, Oh. 45306  
Pup Corn Brands, Inc., New Britain, Ct. 06053  
Quaker Oats Co., Chicago, Il. 60654  
Quaker Oats Co., Lawrenceburg, Ind. 47025  
Quaker Oats Co., Shiremantown, Pa. 17091  
Quaker Oats Co., Memphis, Tn. 38108  
Quincy Soybean Co., Quincy, Il. 62301  
Quinn Menhaden Fisheries, of La., Empire, La. 70050  
Ralston Purina Co., St. Louis, Mo. 63199  
Randolph Milling Co., Bandana, Ky. 42022  
Raymondville Cotton Oil Co., Raymondville, Tx. 78580  
Red Star Yeast & Products Co., Milwaukee, Wi. 53202  
Reelfoot Alfalfa Mill, Tiptonville, Tn. 38079  
Reelfoot Packing Co., Union City, Tn. 38261  
Regal Feed Mills, Nashville, Tn. 37202  
Reliance Chemicals Corp., Houston, Tx. 77024  
Richland Mills, Pulaski, Tn. 38478  
Rico Liquids, Inc., Aliceville, Al. 35442  
Ringgold Milling Co., Clarksville, Tn. 37042  
Rival Pet Foods, Chicago, Il. 60632  
Riverside Oil Mill, Marks, Ms. 38646  
Riviana Foods, Inc., Abbyville, La. 70510  
Robbins Brothers, Auburn, Ky. 42206  
Robertson Corp., Brownstown, In. 47220  
Robertson Corp., Seymour, In. 47274  
Allen Robertson & Co., Louisville, Ky. 40202  
Robinson Grain Co., Union City, Tn. 38261  
Robinson Grain Co., Hickman, Ky. 42050  
Robinson Milling Co., Somerset, Ky. 42501  
Roche Chemical Division, Nutley, N. J. 07110  
Rogers Feed Store, Corinth, Ky. 41010  
Rome Oil Mill Div., Rome, Ga. 30162  
G. P. Rose & Co., Inc., Nashville, Tn. 37211



- Russell Springs Milling Co., Russell Springs, Ky. 42642  
 Ryde & Co., Chicago, Il. 60609  
 Sandusky Mill, Harrodsburg, Ky. 40330  
 Charles H. Schenck & Sons, Vincennes, In.47591  
 Schenley Distillers, Inc., New York, N. Y. 10019  
 John Schlemmer, Harrison, Oh. 45030  
 Jos. Schlitz Brewing Co., Milwaukee, Wi. 53201  
 J. F. Schneider & Son, Middlesboro, Ky.40965  
 Scioto Farm Bureau Co-op Assn., Lucasville, Oh. 45648  
 Scott County Milling Co., Sikeston, Mo. 63801  
 Sea-Born Mineral Div. Skod, Greenwich, Ct. 06831  
 Joseph E. Seagram & Sons, Inc., New York, N.Y. 10022  
 Seaboard Allied Milling Corp., Kansas City, Mo. 64108  
 Security Mills, Inc., Knoxville, Tn. 37901  
 Sherwin-Williams Co., Cleveland, Oh. 44101  
 J. R. Short Milling Co., Mt. Vernon, In.47620  
 Siemer Milling Co., Teutopolis, Il. 62467  
 Sikeston Cotton Oil Mill, Sikeston, Mo. 63801  
 Simpson Milling Co., Waynesburg, Ky. 40489  
 Smith-Douglass, Div. Borden, Norfolk, Va. 23501  
 J. Allen Smith & Co., Inc., Knoxville, Tn. 37917  
 Smithfield Milling Co., Smithfield, Ky. 40068  
 Snyder Molasses Co., Chicago, Il. 60626  
 Solar Nitrogen Chemicals, Inc., Lima, Oh.45801  
 Southern Canning Div. SMS Inc., Highlands, Tx. 77562  
 Southern Cotton Oil Co., Decatur, Al. 35601  
 Southern Cotton Oil Co., Huntsville, Al.35804  
 Southern Cotton Oil Co., Montgomery, Al.36101  
 Southern Cotton Oil Co., New Orleans, La. 70112  
 Southern Cotton Oil Co., Memphis, Tn. 38104  
 So. States Bardstown Coop., Bardstown, Ky. 40004  
 So. States Glasgow Coop., Glasgow, Ky. 42141  
 So. States Hardin Coop., Elizabethtown, Ky. 42701  
 So. States Hopkinsville Coop., Hopkinsville, Ky. 42240  
 So. States LaGrange Coop., LaGrange, Ky. 40031  
 So. States Lebanon Coop., Lebanon, Ky. 40033  
 So. States Leitchfield Coop., Leitchfield, Ky. 42754  
 So. States London Coop., London, Ky. 40741  
 So. States Owenton Coop., Owenton, Ky.40359  
 So. States Richmond Coop., Richmond, Ky.40475  
 So. States Somerset Coop., Somerset, Ky. 42501  
 So. States Coop., Baltimore, Md. 21203  
 So. States Coop., Richmond, Va. 23213  
 Southern Rendering Co., Shelbyville, Tn. 37160  
 Sowell Brothers Feed Mill, Cerulean, Ky. 42215  
 Woodford Spears & Sons, Paris, Ky. 40361  
 Spears-Kiser Co., Inc., Paris, Ky. 40361  
 Specialty Feeds Inc., Horn Lake, Ms. 38637  
 Spen-Well Feed Co., Winchester, Ky. 40391  
 Spencer Farm Service, Taylorsville, Ky. 40071  
 Spencer Kellogg, Buffalo, N. Y. 14240  
 Sphar & Company, Mt. Carmel, Il. 62863  
 Sportsman Dog Food Co., Chicago, Il. 60632  
 Square Deal Fortification Co., Kouts, In.46347  
 A. E. Staley Manufacturing, Decatur, Il. 62525  
 Standard Brands, Inc., New York, N. Y. 10022  
 Standard Brands, Inc., Chicago, Il.60613  
 Standard Products, Inc., Kilmarnock, Va.22482  
 Stanford Creamery, Stanford, Ky. 40484  
 Star-Kist Foods, Inc., Terminal Island, Ca. 90730  
 Stauffer Chemical Co., New York, N. Y. 10017  
 Stewarts Feed Mill, Flat Lick, Ky. 40935  
 F. W. Stock & Sons, Inc., Hillsdale Mi. 49242  
 Strid Grain Co., Green Bay, Wi. 54306  
 Strongheart Packing Co., Chicago, Il. 60604  
 Strongheart Products Co., Kansas City, Ks. 66110  
 Sturgis Milling Co., Sturgis, Ky. 42459  
 Summer Shade Roller Mills, Summer Shade, Ky. 42166  
 Sun-Ray Feed Mills, Inc., Lexington, Ky. 40508  
 Sunshine Biscuits, Inc., Long Island City, N. Y. 11101  
 Sunshine Feed Mills, Inc., Red Bay, Al. 35582  
 Sunshine Molasses Co., Somerset, Ky. 42501  
 Supreme Mills, Glasgow, Ky. 42141  
 Surewill Mfg. Co., Farmington, Ky. 42040  
 D. B. Sutherland & Sons, Bloomfield, Ky.40008  
 Sweet Feed Mills, Inc., Bowling Green, Ky.42101  
 Swift & Co., Pet Food, Chicago, Il. 60604  
 Swift & Co., Feed Mill, Memphis, Tn. 38102  
 Swift & Co., Oil Mill, Memphis, Tn. 38114  
 Syracuse Dehydrated Products, Syracuse, In. 46567  
 T. & H. Feed Service, Lebanon, Ky. 40033  
 Tabor Feed Mill, Columbia, Ky. 42728  
 Taylor County Feed Co., Campbellsville, Ky. 42718  
 Teater & Cassity, Nicholasville, Ky. 40356  
 Teklad, Inc., Monmouth, Il. 61462  
 Tennessee Farmers Cooperative, LaVergne, Tn. 37086  
 Terry Lee Products, St. Paul, Mn. 55105  
 Thompson & Nash, Inc., Shelbyville, Ky. 40065  
 Thorobred Co., Inc., Waynesville, Oh. 45068  
 Thrifty Supplements, Rockford, Oh. 45882  
 Thurmonds Coal & Feed Co., Murray, Ky. 42071  
 Topeka Molasses Co., Ligonier, In. 46767  
 Mr. Toymaker Enterprises, Atlanta, Ga. 30318  
 Tree City Specialties, Greensburg, Ind. 47240  
 Trenton Oil Mill Co., Trenton, Tn. 38385  
 Tri-Associates, Inc., Minneapolis, Mn. 55403  
 Tri-County Farm Supply, Corbin, Ky. 40701  
 Tri-State Molasses Co., Inc., Nashville, Tn.37213  
 Tupelo Oil Mill, Inc., Tupelo, Ms. 38801  
 Ultra-Life Laboratories, Inc., St. Louis, Il. 62201  
 Union County Grain Co., Sturgis, Ky. 42459  
 Union Sales Corp., Columbus, In. 47201  
 U. S. Public Health Service Hospital, Lexington, Ky. 40507  
 Usen Products Co., Woburn, Ma. 01801  
 Van Camp Sea Food, Long Beach, Ca. 90812  
 Vets Div.of Perk Foods Co., Chicago, Il. 60610  
 Vit-A-Way, Inc., Ft. Worth, Tx. 76106  
 Vita Plus Corporation, Madison, Wi. 53701  
 Vitamineral Products Co., Peoria, Il. 61603  
 Vylactos Laboratories, Syracuse, In. 46567  
 Vylactos Laboratories, Inc., Des Moines, Ia. 50313  
 Warners Farm Supply, Somerset, Ky. 42501  
 Water Valley Mill, Water Valley, Ky. 42085  
 Watkins Products Co., Inc., Winona, Mn. 55987  
 Watkins Products Co., Inc., Memphis, Tn.38102  
 George Wiedmann Brewing Co., Newport, Ky.41071  
 Weisenberger Mills, Midway, Ky. 40347  
 West Tennessee Soya Mill, Inc., Tiptonville, Tn. 38257  
 Western Grain Co., Birmingham, Al. 35201  
 Martha White, Inc., Nashville, Tn. 37203

Martha White Mills of W. Va., Huntington, W.V. 25706	Wilson and Company, Inc., Chicago, Ill. 60601
Whitwater Flour Mills, Whitewater, Ks. 67154	Wilson Feed Mill, Annville, Ky. 40402
Whitmer Co., Bowling Green, Ky. 42101	Winn Milling Co., Greensburg, Ky. 42743
Whiz Pet Food Co., Seattle, Wa. 98114	Woodford Feed Co., Versailles, Ky. 40383
R. L. Wiles Feed Mills, Inc., Nashville, Tn. 37210	Yazoo Valley Oil Mill, Greenwood, Ms. 38930
Williamstown Roller Mill, Williamstown, Ky. 41097	Yopp Seed Co., Paducah, Ky. 42001
	Yukon Mill & Grain Co., Yukon, Ok. 73099
	Xtra Factors, Inc., Ephrata, Pa. 17522

## AVERAGE COMPOSITION OF THE MORE COMMON FEEDSTUFFS

Feedstuff	Protein	Fat	Carbohydrates		Water	Ash
			Fiber	N.F. Extract		
Alfalfa Leaf Meal	21.0	2.8	16.0	40.5	7.7	12.0
Alfalfa Meal	14.0	2.0	30.0	36.0	9.0	9.0
Barley	12.0	2.0	5.4	67.3	10.6	2.7
Barley Feed	13.5	3.5	8.7	60.9	9.3	4.9
Beet Pulp, Dried	9.2	0.5	19.8	47.2	9.9	3.4
Blood, Dried	84.5	1.1	1.0	0.7	8.2	4.5
Bone Meal, Raw	26.0	5.0	1.0	2.5	6.4	59.1
Bone Meal, Steamed	7.5	1.2	1.5	3.2	5.7	81.3
Brewers Dried Grains	25.0	6.4	16.0	41.0	7.7	3.9
Buckwheat	10.8	2.5	10.5	62.3	12.0	1.9
Buttermilk, Dried	33.0	6.0	0.3	43.1	7.6	10.0
Buttermilk, Semi-Solid	13.4	3.0	0.0	15.9	65.0	2.7
Citrus Meal	5.9	3.1	11.5	62.7	9.9	6.9
Coconut Oil Meal	20.5	8.0	10.0	45.0	9.5	6.5
Corn	8.0	3.9	2.0	69.9	15.0	1.2
Corn Bran	9.7	7.3	9.2	62.0	9.4	2.4
Corn and Cob Meal	7.0	3.5	8.0	66.1	14.1	1.5
Crushed Ear Corn & Shucks	7.0	3.0	10.6	69.2	11.0	1.8
Corn Chops	8.0	3.5	2.0	71.0	14.0	1.5
Corn Feed Meal	8.0	4.5	3.0	71.0	11.4	2.0
Corn Germ Meal	21.0	9.0	9.0	50.7	7.0	3.3
Corn Gluten Feed	25.5	2.7	7.6	48.8	9.1	6.3
Corn Gluten Meal	43.1	2.0	4.0	39.8	8.6	2.5
Cottonseed Meal	41.5	6.3	10.4	28.1	7.2	6.5
Cottonseed Meal Solvent	41.1	2.1	11.0	31.1	9.2	6.8
Distillers Dried Grains, Corn	26.1	8.8	12.8	44.2	7.1	2.5
Distillers Dried Grains, Rye	24.4	5.6	11.5	48.3	6.1	22.4
Distillers Dried Solubles	28.5	9.6	4.4	42.5	7.0	7.4
Fish Meal	60.9	6.8	0.9	5.0	7.1	17.6
Flaxseed	24.0	35.9	6.3	24.0	9.2	4.3
Flaxseed Screenings Oil Feed	25.0	7.1	11.7	40.3	8.1	7.8
Hominy Feed	11.2	6.9	5.2	64.2	9.6	2.9
Lespedeza Seed	36.6	7.6	9.6	32.8	8.3	5.1
Linseed Meal	35.4	5.8	8.2	36.0	9.0	5.6
Linseed Meal Solvent	36.6	1.0	9.3	38.3	9.6	5.6
Malt Sprouts	26.8	1.3	14.2	44.3	7.4	6.0
Meat Meal, 55%	55.8	9.3	2.1	1.3	6.1	25.4
Meat & Bone Meal, 50%	51.0	10.1	2.1	1.6	6.1	29.1
Molasses, Cane	3.0	0.0	0.0	61.7	25.7	6.1
Molasses, Beet	7.8	0.0	0.0	62.1	22.0	7.0
Oats	12.0	4.6	11.0	58.6	10.4	3.4
Oat Kernels	16.0	6.4	1.6	66.0	8.0	2.0
Oat Middlings	15.9	5.2	3.3	64.6	8.6	2.4
Peanut Kernels	30.4	47.7	2.5	11.7	5.4	2.3
Peanut Meal	43.5	7.6	13.3	23.4	7.0	5.2
Peanut Meal, Solvent	51.5	1.4	5.7	27.2	8.4	5.8
Peanut Skins	15.9	22.4	10.6	42.2	6.2	2.7
Rice Bran	12.5	12.5	12.5	44.0	9.0	9.5
Rye	11.8	1.8	1.8	73.2	9.4	2.0
Rye Middlings	16.6	3.4	5.2	61.2	9.8	3.8
Skimmed Milk, Dried	34.0	1.0	0.0	51.0	6.0	8.0
Sorghum Grains	9.5	3.4	2.0	72.2	12.0	1.9
Soybean (Seed)	36.5	17.5	4.3	26.5	9.9	5.3
Soybean Meal	44.3	5.3	5.7	29.6	9.1	6.0
Soybean Meal, Solvent	46.1	1.0	5.9	31.8	9.4	5.8

## AVERAGE COMPOSITION OF THE MORE COMMON FEEDSTUFFS, CONTINUED

Feedstuff	Protein	Fat	Carbohydrates		Water	Ash
			Fiber	N.F. Extract		
Meat Meal Tankage, 60%	60.6	8.5	2.0	1.8	6.9	20.2
Meat Meal Tankage with Bone 50%	51.3	11.5	2.3	2.3	6.2	26.1
Wheat	10.5	1.7	2.8	72.9	10.2	1.9
Wheat Bran	14.0	3.5	9.5	56.9	10.1	6.0
Wheat Mill Run	13.5	3.5	7.5	60.2	10.1	5.2
Wheat Middlings	15.0	3.5	7.0	58.7	10.3	5.4
Wheat Shorts	15.0	3.5	6.0	60.6	10.5	4.4
Wheat Red Dog	16.0	3.5	3.0	66.4	8.5	2.6
Wheat Flour, Patent	10.9	1.3	0.4	74.7	12.3	0.5
Wheat Germ Meal	27.8	9.2	3.3	44.4	8.9	4.5
Grain Screenings (From Wheat)	10.5	1.7	2.8	70.8	9.6	4.6
Whey, Dried	12.2	0.8	0.2	70.4	6.5	9.9
Yeast Brewers, Dried	44.9	0.7	2.7	38.8	6.2	6.9
Yeast, Irradiated, Dried	48.7	1.1	5.5	32.2	6.4	6.4
<u>ROUGHAGES</u>						
Alfalfa Hay	14.5	2.3	29.7	36.3	8.6	8.6
Blue Grass Hay	8.2	2.5	29.8	42.5	10.5	6.5
Clover Hay, White	14.4	2.4	22.5	40.9	12.0	7.8
Clover Hay, Red	11.8	2.6	27.3	40.1	11.8	6.4
Corn Stover, Without ear	5.9	1.6	30.8	46.5	9.4	5.8
Corn Stover, With Ear	7.8	2.2	27.1	47.6	8.9	6.4
Cowpea Hay	18.6	2.6	22.5	35.1	9.9	11.3
Fescue Hay	7.0	1.9	30.3	43.2	11.8	6.8
Lespedeza Hay	13.5	2.5	28.0	40.1	10.5	5.4
Soybean Hay	15.5	2.8	26.5	38.7	9.2	7.3
Timothy Hay	6.2	2.5	29.8	45.0	11.6	4.9
<u>FILLERS</u>						
Alfalfa Stem Meal	11.5	1.3	36.3	34.8	9.0	7.1
Corn Cob	2.3	0.4	32.1	54.0	9.6	1.6
Corn Husk or Shuck	3.4	0.9	28.2	49.6	15.0	2.9
Cottonseed Hulls	3.9	1.0	45.5	37.2	9.7	2.7
Flax Plant By-Products	6.4	2.1	44.4	33.1	8.1	5.9
Oat Mill By-Products	5.6	1.8	27.9	50.8	7.6	6.3
Oat Hull Feed	3.5	1.5	32.5	49.3	7.6	5.6
Oat Hulls	3.0	1.0	35.0	47.7	6.8	6.5
Screenings*						
Chaff and Dust **						

\* Varies in quality from fair.

\*\* Varies in quality from poor to worthless and even dangerous.

## Miscellaneous Samples Analyzed in 1947-67

Feedstuff	Protein	Fat	Fiber
Activated Sewer Sludge	29.2	6.0	6.7
Alfalfa Silage	4.0	0.9	9.5
Barley Bran	15.2	5.2	14.9
Bluegrass Chaff	7.1	1.9	28.5
Bluegrass Screenings	6.7	2.0	26.1
Blackberry Seeds	9.6	---	---
Bread	12.5	5.3	0.7
Brewers Wet Grains	10.3	1.0	3.4
Buckwheat Feed & Hulls	9.6	2.9	22.4
Cake, Ground	4.8	9.9	1.5
Cob & Shuck Meal	3.2	0.6	31.6
Cookie Meal	7.7	8.6	0.8
Corn Dust	7.1	2.7	1.7
Corn Blowings	8.7	1.9	15.7
Corn Fodder & Soybean Plant	10.1	3.9	17.0
Cracklings, Edible	67.1	28.1	1.1
Cracklings, Inedible	44.1	22.2	3.0
Distillers Thin Slop	1.4	---	---
Fescue Silage	2.8	1.3	8.9
Honey Suckle	2.8	0.02	6.0
Ice Cream Cones, Ground	9.2	1.5	0.7
Johnson Grass	7.8	0.8	37.6
Kale Seed	24.3	40.0	9.6
Korean Hay	13.9	---	---
Korean Screenings	21.9	3.6	20.8
Lespedeza Screenings	19.8	15.7	26.2
Lima Beans, Ground	21.5	1.5	6.1
Malt Hulls, Ground	10.3	1.8	22.5
Osage Orange Apple	2.5	4.3	1.7
Peanut Vine Meal	10.1	2.3	34.0
Popcorn, Ground	9.4	2.5	2.7
Popcorn, Popped and Crushed	8.4	12.8	2.9
Potato Flour	2.0	---	---
Potato Flakes	9.0	---	---
Rag Weed Seed	17.2	16.2	34.4
Sorghum, Ground (Stalk & Leaves)	4.1	2.9	19.6
Ground Unthreshed Heads of Grain Sorghum	6.4	2.1	10.5
Fescue & Clover Silage	2.0	1.0	8.0
Oat Silage	1.9	1.5	9.8
Straw Silage	6.5	3.0	19.5
Sudan Grass Silage	5.9	1.1	14.0
Sudan & Soybean Silage	2.4	0.6	7.9
Vetch Seed	26.4	0.7	7.6
Walnut Shells & Meats	13.2	24.2	27.1
Walnut Meat Skins & Small Amount of Shell	21.5	45.5	12.0
Wheat Toast, Ground	12.6	4.9	0.5
Wild Onions	6.7	0.2	1.0
Wheat Silage	4.4	1.4	22.7

## UREA

The following information may be of some help to manufacturers and feeders using urea.

Urea is a white crystalline powder made by combining ammonia and carbon dioxide under pressure in equipment that will withstand high temperature.

Urea contains 46.5% nitrogen, which is equivalent to 291% protein. The commercial product "262" Feed Compound, is urea which has been diluted with other materials to prevent caking, and contains 42% nitrogen which is equivalent to 262% protein. The addition of 1 percent of this material to a dairy feed is equivalent to adding 2.62% protein. Besides urea's protein equivalent value, one must also consider its lack of energy value as compared to the common high protein feeds. An example of this, if the nitrogen in urea is used as efficiently as the nitrogen in high protein feeds, it will require approximately 14 pounds of urea, plus 100 pounds of grain to replace 100 pounds of soybean meal.

Urea, when used as an ingredient in feeds sold in Kentucky is shown in the guaranteed analysis as follows: Crude Protein \_\_\_\_\_%. This includes not more than \_\_\_\_\_% equivalent crude protein from non-protein nitrogen. Crude Fat \_\_\_\_\_%. Crude Fiber \_\_\_\_\_%. One percent of "262 Feed Compound" would be 2.62% equivalent protein from non-protein nitrogen. Urea should be shown as an ingredient under "Ingredients."

Cattle, sheep, and goats are able to convert urea to a usable form through the action of micro-organisms in the rumen. The organisms convert the nitrogen of urea to protein in their cell bodies which are in turn digested by the animal.

Horses, swine, dogs, and other single-stomach animals are unable to utilize urea. If used in large quantities, it may be toxic to such animals.

The Association of American Feed Control Officials has a regulation to the effect that urea be used in such limited quantities as to insure the total amount present shall not exceed 3 percent of the (grain) ration or 1/3 of the total protein. If a feed contains more than 3 percent of urea, the label shall bear a statement of proper usage and the following in type of such conspicuousness as to render it likely to be read and understood by ordinary individuals under customary conditions of purchase and use.

On labels such as those for medicated feeds which bear adequate feeding directions and/or warning statements, the presence of added non-protein nitrogen products shall require neither additional feeding directions nor the customary non-protein nitrogen warning statement .

## CHANGES IN PRODUCT NAMES

<u>NEW NAME</u>	<u>OLD NAME</u>
Soybean Meal	Soybean Oil Meal
Linseed Meal	Linseed Oil Meal
Meat Meal	Meat Scraps
Meat Meal Tankage	Tankage or Digester Tankage
Wheat Middlings	Wheat Standard Middlings
	Wheat Gray Middling
Wheat Shorts	Wheat Brown Shorts
	Wheat Gray Shorts
	Wheat White Shorts
Wheat Mill Run	Wheat Mixed Feed
Wheat Germ Meal	Wheat Germ Oil Meal
Oat Hulls	Oat Mill By Products (If Fiber is over 22%)
Rye Mill Run	Rye Feed
Rye Flour Middlings	Rye Middlings
Soybean Mill Feed	Soybean Mill Product
Vitamin A Oil	Vitamin A Feeding Oil
Vitamin D Oil	Vitamin D Feeding Oil
Vitamin A & D Oil	Vitamin A & D Feeding Oil
Cane Molasses	Molasses
Corn Sugar Molasses	
Beet Molasses	
Citrus Molasses	
BHA (A Preservative)	Butylated Hydroxyanisole ( A Preservative)
BHT (A Preservative)	Butylated Hydroxy Toluene ( A Preservative)

HOW TO LABEL FEEDS CONTAINING ANTIBIOTICS FOR GROWTH PROMOTION  
AND IMPROVED FEED EFFICIENCY

The labeling of feeds containing Antibiotics for growth promotion and feed efficiency was changed on January 1, 1966.

All labels for feeds containing Antibiotics must give the purpose for which the Antibiotics are used after the Brand Name of the feed. The Antibiotics are listed as Active Drug Ingredients and the percentage does not have to be shown, however, there is no objection to the percentage being shown. If the percentage is shown it should be in grams per ton thru 2000 grams and grams per pound if the amount used is over 2000 grams. Feeding directions must be shown on the label for such products. The word "Medicated" under the Brand Name is not a requirement on labels for feed containing Antibiotics for growth promotion and feed efficiency.

On labels for pre-mixes, concentrates and supplements, the percentage of Antibiotics must be shown and adequate mixing directions to provide a finished feed with the proper concentration of Antibiotics.

The Federal Additive Regulation for certain Antibiotics, Tylosin, Oleandomycin and Nystatin require quantitative guarantees regardless of the level or purpose of the Antibiotic.

A sample Type A Label is shown on page 16.

## TYPE A LABEL

TO BE USED FOR FEEDS CONTAINING ANTIBIOTICS AT THE  
ACCEPTED LEVELS FOR GROWTH PROMOTION AND / OR FEED  
EFFICIENCY AS SET FORTH IN FOOD ADDITIVE REGULATION  
121.225

**100 lbs. Net Weight**

**BLUE BIRD  
CHICK GROWER**

For growth stimulation and feed efficiency when fed as directed.

**ACTIVE DRUG INGREDIENTS:**

**PENICILLIN** (from procaine penicillin)

**BACITRACIN** (from manganese bacitracin)

**GUARANTEED ANALYSIS:**

**CRUDE PROTEIN**, not less than 17.0%

**CRUDE FAT**, not less than \_\_\_\_\_ 3.0%

**CRUDE FIBER**, not more than .. 6.0%

**INGREDIENTS:**

Each ingredient must be specifically named (unless stated as such in the guaranteed analysis listing) in accordance with the names and definitions adopted by the AAFCO.

**DIRECTIONS FOR USE:**

To be fed as a sole ration for growing poultry.

**MANUFACTURED BY**

**BLUE BIRD FEED MILLS**

Robin, Indiana

Type A Label



#### HOW TO LABEL FEEDS CONTAINING DRUGS

All labels for feeds containing Drugs must have the word "Medicated" under the Brand Name and it must be in type half the size of the type for the Brand Name.

The purpose for which the feed is used should be listed next and under this, the Active Drug Ingredients.

This label is to be used for all Medicated Feeds which contain Drugs for special purposes such as prevention of diseases, treatment of diseases, aid in control of diseases, hormone action, worming etc.

This label is also used on feeds containing growth promotion drugs other than Antibiotics.

All labels for feeds containing Drugs should have feeding directions and withdrawal notices when necessary. In Pre-Mixes, Concentrates and Supplements, the feeding directions should give directions for mixing the finished feed.

A Sample Type B Label is shown on page 18.

## TYPE B LABEL

TO BE USED FOR ALL MEDICATED FEEDS

100 LBS. NET WEIGHT

**BLUE BIRD  
CHICK STARTER 3218**

**MEDICATED**

To aid in preventing outbreaks of coccidiosis. Follow feeding directions and warning statement on back of this label.

**Active Drug Ingredient(s)**

Nicarbazin ..... 0.0125%

**Guaranteed Analysis**

Crude Protein, not less than.....20.0%  
Crude Fat, not less than ..... 4.0%  
Crude Fiber, not more than..... 3.0%

**INGREDIENTS**

Each ingredient must be specifically named (unless stated as such in the guaranteed analysis listing) in accordance with the names and definitions adopted by the AAFCO.

Manufactured by

**BLUE BIRD FEED MILLS**

Robin, Indiana

Type B Label

TABLE 1 REPORT OF OFFICIAL FEED SAMPLES ANALYZED, 1967

For samples not passed see Table 2

NAME AND ADDRESS OF MANUFACTURER	Number of Samples Analyzed and Examined	Number of Samples Passed	Number of Samples Not Passed
Ade Farm Chemical Co., Inc., Tiskilwa, Il. 61368	1	1	
Ag Services, Inc., Bowling Green, Ky. 42101	1	1	
Agway, Inc, Terrace Hill, Ithaca, N.Y.14851	1		1
Albany Mills, Albany, Ky. 42602	5	5	
Allen Products Co., Inc. Allentown, Pa. 18104	1	1	
Allied Food Distributors, Atlanta, Ga. 30318	1		1
Allied Mills, Inc., Chicago, Il. 60606	47	47	
Allied Mills, Inc., Libertyville, Il. 60048	132	119	13
American Cyanamid Co., Princeton, N.J. 08540	6	6	
American Kennel Foods, Russellville, Ky. 42276	1		1
Amory Cotton Oil Co., Inc., Amory, Miss. 38821	1	1	
Anderson County Farm Service, Lawrenceburg, Ky. 40422	3	3	
Anderson and Spilman, Danville, Ky. 40422	5	4	1
Anglo Sweet Feed Mill, Inc., Owensboro, Ky. 42301	14	13	1
Archer Daniels Midland Co., Minneapolis, Minn. 55440	1	1	
Ashland Milling Co., Inc., Ashland, Ky. 41101	5	2	3
Aubrey Feed Mills, Inc., Louisville, Ky. 40204	255	234	21
Auburn Mills, Inc., Auburn, Ky. 42206	14	14	
Aylor & Meyer Co., Aurora, Ind. 47001	2	2	
Bagdad Roller Mills, Bagdad, Ky. 40003	29	28	1
Barton Distilling Co., Bardstown, Ky. 40004	8	8	
Baughman Milling Co., Stanford, Ky. 40480	9	8	1
Beacon Division of Textron, Kansas City, Mo. 64116	3	3	
B. A. Bernard & Co., Inc., Camden, N.J. 08104	1		1
Best Feeds & Farm Supplies, Oakdale, Pa. 15071	2	2	
Bi-County Farm Bureau Coop., Florence, Ky. 41042	8	8	
Big Four Feed & Implement Co., Scottsville, Ky. 42164	2	2	
Birmingham Milling Co., Benton, Ky.	1	1	
Blue Barn Dog Food Co., New Albany, Ind. 47150	6	6	
Boone County Farm Supply, Walton, Ky. 41094	1	1	
Boone Valley Coop. Prod. Assn., Eagle Grove, Iowa 50533	1	1	
Breckenridge Feed Mill, Inc., Mason City, Iowa 50402	4	4	
Browder Milling Co., Inc., Fulton, Ky. 42041	4	3	1
Brown Forman Distillers Corp., Louisville, Ky. 40201	1	1	
Bryant & Crume Milling Co., Caneyville, Ky. 42721	9	7	2
Buhler Mills, Inc., Buhler Kansas 67522	14	14	
Buhler Mills, Inc., Lexington, Ky. 40506	4	2	2
Burrows Feed Mill, Pendleton, Ky. 40055	1	1	
Burtens Feed & Supply, Willailla, Ky. 40493	1	1	
Bush Brothers & Co., Clinton, Tn. 37716	2	2	
A. C. Butts & Sons, Fulton, Ky. 42041	1	1	
Cadiz Milling Co., Cadiz, Ky. 42211	9	8	1
Caneyville Roller Mill Co., Caneyville, Ky. 42721	10	8	2
Cardinal Food Products, Inc., St. Louis, Mo. 63103	2	2	
Cargill, Inc., Cincinnati, Ohio 45204	8	8	
Carrol County Farm Bureau Coop., Carrollton, Ky. 41008	4	4	
Carnation Company, Los Angeles, Calif. 90036	1	1	
Central Soya Company, Inc., Ft. Wayne, Ind. 46802	217	207	10
Central Soya Inc. of Ky., Louisville, Ky. 40204	3	3	
Citizens Milling Co., Somerset, Ky. 42501	6	5	1
H. C. Cole Milling, Chester, Il. 62233	1	1	
Community Milling Co., Irvington, Ky. 40146	10	10	
Community Feed Mill, Belton, Ky. 42324	12	11	1
Cooperative Mills, Inc., Baltimore, Md. 21203	1	1	
Cooperative Mills, Inc., Cincinnati, Oh. 45215	15	15	
Corn Products Company, New York, N.Y. 10022	1	1	
Crescent Roller Mills, Inc., Taylorsville, Ky. 40071	8	7	1

TABLE 1 REPORT OF OFFICIAL FEED SAMPLES ANALYZED, 1967

For samples not passed see Table 2

NAME AND ADDRESS OF MANUFACTURER	Number of Samples Analyzed and Examined	Number of Samples Passed	Number of Samples Not Passed
Cudahy Company, Dundee, Il. 60118	1	1	
Cumberland Milling Co., Clarksville, Tn. 37041	1	1	
Custom Feed Mills, Morganfield, Ky. 42437	12	11	1
Dearborn Mills, Aurora, In. 47001	20	18	2
Decatur Cotton Oil Co., Decatur, Al. 35601	1	1	
Diamond Crystal Salt Co., St. Clair, Mi. 48079	1		1
W. C. Dicken & Son, Mentor, Ky. 41060	3	3	
Dixie Mills Co., E. St. Louis, Il. 62202	4	3	1
Dixie Portland Flour Mills, Memphis, Tn. 38101	2	1	1
Duncan McFarland Farm Serv., Lawrenceburg, Ky.40342	7	7	
Dunnington Milling Co., Monticello, Ky. 42633	2	2	
Dyersburg Oil Mill Co., Dyersburg, Tn. 38024	2	2	
Early & Daniel Co., Inc., Cincinnati, Oh. 45203	8	6	2
Early & Daniel Co., Troy, Oh. 45373	1	1	
Edmonton Farm Center, Edmonton, Ky. 42129	1	1	
F. L. Emmert Co., Inc., Cincinnati, Oh. 45214	9	8	1
John W. Eshelman & Sons, Circleville, Oh. 43113	9	8	1
John W. Eshelman & Sons, Lancaster, Pa. 17604	3	3	
Famous Feed Mills, Nashville, Tn. 37201	6	3	3
Farm Bureau Milling Co., Hammond, In. 46320	1	1	
Farm Service Center, Inc., Beaver Dam, Ky. 42320	1	1	
Farm Services, Inc., Glasgow, Ky. 42141	2	2	
Oscar Farmer & Sons, Louisville, Ky. 40203	1	1	
Farmers Elevator Molasses Co., Franklin, Ky. 42134	2	2	
Farmers Feed Mill, Lexington, Ky. 40508	1	1	
Farmers Feed Store, Central City, Ky. 42330	5	5	
Farmers & Ginners Cotton Oil Mill, Birmingham,Al. 35201	1		1
Farmers & Merchants Milling, Brooksville,Ky.41004	1	1	
Farmers Supply & Produce Co., Monticello,Ky.42633	8	8	
Farmers Supply Store, Inc., Leitchfield, Ky. 42754	1	1	
J. H. Fedders, Inc., Covington, Ky. 41014	8	7	1
Folsomdale Milling Co., Boaz, Ky. 42027	1	1	
Foremost Dairies, Inc., San Francisco, Ca. 94111	1	1	
Fort Negley Mills, Nashville, Tn. 37203	1	1	
Foster Canning, Inc., Napoleon, Oh. 43545	1	1	
Froedtert Malt Corporation, Milwaukee, Wl. 53201	1	1	
Frosty Morn Meats, Clarksville, Tn. 37041	1		1
Henry Fruechtenicht Inc., Louisville, Ky. 40202	186	172	14
Fuhrer-Ford Mill Co., Mt. Vernon, In. 47620	3	3	
Gallatin County Farm Supply, Warsaw, Ky. 41095	3	3	
Garden St. Mill & Elevator, Louisville, Ky.40203	2	2	
Garrard Mills, Lancaster, Ky. 40444	8	7	1
J. I. Gates Milling Co., Columbus, Oh. 43222	1	1	
General Foods Corp., White Plains, N.Y. 10605	1	1	
General Packing Co., Waynesville, Oh. 45068	4	2	2
Germantown Milling Co., Germantown, Ky. 41044	3	3	
Gilster Milling Co., Chester, Il. 62233	1	1	
Goldenrod Oil Meal Sales Co., Memphis, Tn. 38101	5	4	1
Gooch Feed Mill Co., Lincoln, Nb. 68501	1	1	
W. R. Grace Co., Atlantic, Ia. 50022	4	2	2
W. R. Grace Co., St. Louis, Mo. 63105	3	2	1
W. R. Grace Co., Memphis, Tn. 38101	1	1	
The Great A & P Tea Co., Brockport, N. Y. 14420	1		1
Guthrie Farm Supply, Harrodsburg, Ky. 40330	2	1	1
Guthrie Feed Mill, Guthrie, Ky. 42234	3	2	1
Hammon Brothers Feed Mill, London, Ky. 40741	1	1	
Hardin Co. Milling Co., Elizabethtown, Ky.42701	5	5	
Hardin Feed Mill, Hardin, Ky. 42048	1	1	
Hardy Brothers Mills, Walton, Ky. 41094	2	2	
Hartz Mountain Products, New York, N. Y. 10003	1	1	
T. J. Haycraft Sales & Ser., Leitchfield, Ky.42754	6	6	
Haydon Mill & Grain Co., Springfield, Ky. 40069	5	4	1
Haynes Milling Company, Inc., Portland, In. 47371	1	1	
Heaven Hill Distilleries, Bardstown, Ky. 40004	3	3	

TABLE 1 REPORT OF OFFICIAL FEED SAMPLES ANALYZED, 1967

For samples not passed see Table 2

NAME AND ADDRESS OF MANUFACTURER	Number of Samples Analyzed and Examined	Number of Samples Passed	Number of Samples Not Passed
Dr. Heinz Company, Bloomingburg, Ohio 43106	8	5	3
Henderson Feed & Commission, Henderson, Ky. 42420	1		1
Burch Hester Feed Store, Hustonville, Ky. 40437	12	11	1
Frank Hinton & Son, Plummers Landing, Ky. 41089	1	1	
Hinton Hatchery, Ashland, Ky. 41101	8	8	
Hodgenville Roller Mills, Hodgenville, Ky. 42748	3	3	
Home Milling Company, Inc., Greenville, Ky. 42345	5	5	
Honeggers & Co., Inc., Fairbury, Il. 61739	17	15	2
Hudsons Farm Service, Franklin, Ky. 42134	2	2	
Igleheart Brothers, Evansville, In. 47707	3	3	
Illinois Cereal Mills, Inc., Paris, Il. 61944	2	2	
Illinois Soy Products Co., Springfield, Il. 62705	2	2	
Independent Oil Mill, Jackson, Tn. 38301	2	2	
Indiana Farm Bureau, Indianapolis, In. 46204	7	6	1
International Milling Co., Minneapolis, Mn. 55415	17	17	
E. Kahn's Sons Co., Cincinnati, Oh. 45225	1		1
Kal Kan Foods, Inc., Los Angeles, Ca. 90058	5	1	4
Kaler Milling Co., Symsonia, Ky. 42082	1	1	
Keco Milling Co., McKenzie, Tn. 38201	2	2	
Ky. Animal By-Products, Russellville, Ky. 42276	1		1
Ky. By-Products Corp., Louisville, Ky. 40211	1	1	
Ky. Chemical Industries, Cincinnati, Oh. 45232	2		2
Ky. Dept. of Welfare, Frankfort, Ky. 40601	1	1	
Kingston Farmers Exchange, Kingston, Oh. 45644	1	1	
Knauf & Tesch Company, Chilton, Wisconsin 53014	3	3	
Kraft Foods Co., Chicago, Il. 60612	2	1	1
LaCenter Feed Mills, LaCenter, Ky. 42056	1	1	
Lake County Oil Mill, Tiptonville, Tn. 38079	1	1	
Land O Lakes Creameries, Minneapolis, Mn. 55413	1	1	
Lewisburg Roller Mills, Lewisburg, Ky. 42256	5	5	
Lexington Roller Mills, Lexington, Ky. 40506	7	7	
Lilly Brothers Seed Co., Hopkinsville, Ky. 42240	6	5	1
Lincoln Farm Service, Stanford, Ky. 40484	1	1	
Liv-A-Snaps, Inc., St. Paul, Mn. 55105	1	1	
Livestock Industries, Inc., Park City, Ky. 42160	39	33	6
Livestock Supply Company, Owensboro, Ky. 42301	13	11	2
Lofton's Feed & Grain, Clay, Ky. 42404	3	2	1
Lowes Feed & Hatchery, Bowling Green, Ky. 42101	19	15	4
Lynn Grove Milling Co., Lynn Grove, Ky. 42062	1	1	
M.F.A. Grain Div., Mexico, Mo. 65265	2	1	1
Magic Feed Mills, Inc., Paoli, In. 47454	1	1	
Mayes, Helm & Coyle, Perryville, Ky. 40468	3	3	
Mayfield Milling Co., Inc., Mayfield, Ky. 42066	13	12	1
Mayfield Sweet Feed Mill, Mayfield, Ky. 42066	10	8	2
J. A. McDonald & Sons, Rogersville, Tn. 37857	1	1	
McGahan & Company, Paintsville, Ky. 41240	3	3	
McRedmond Brothers, Nashville, Tn. 37201	1		1
Meadows Feed & Building Supply, Clay City, Ky. 40312	2	2	
Mennel Milling Company, Fostoria, Oh. 44830	1	1	
Mid-South Feeds, Inc., Nashville, Tn. 37209	9	8	1
Mid-State Molasses Co., Franklin, Tn. 37046	3	3	
Middlesboro Milling Co., Middlesboro, Ky. 40965	5	5	
Midget Mills, Somerset, Ky. 42501	7	6	1
Miller Milling Service, Bowling Green, Ky. 42101	1	1	
Minter City Oil Mill, Minter City, Miss. 38944	1		1
Mohawk Milling Co., Newport, Tn. 37821	3	3	
Monarch Milling Co., Mt. Sterling, Ky. 40353	3	3	
Moorman Manufacturing Co., Quincy, Il. 62301	17	16	1
Morgan Packing Co., Inc., Austin, In. 47102	1	1	
Morgantown Feed Mill, Morgantown, Ky. 42261	5	5	
Morton Salt Co., Chicago, Il. 60606	1	1	
Mt. Vernon Milling Co., Mt. Vernon, In. 47620	1	1	
Munfordville Milling Co., Munfordville, Ky. 42765	4	4	
Murphy Grain & Milling Co., Owensboro, Ky. 42301	1	1	

TABLE 1 REPORT OF OFFICIAL FEED SAMPLES ANALYZED, 1967

For samples not passed see Table 2

NAME AND ADDRESS OF MANUFACTURER	Number of Samples Analyzed and Examined	Number of Samples Passed	Number of Samples Not Passed
Henry Nagel & Son, Cincinnati, Oh. 45214	1	1	
Nashville Cotton Oil Mill Co., Nashville, Tn. 37202	2	2	
National Biscuit Co., Toledo, Oh. 43603	1	1	
National Molasses Co., Oreland, Pa. 19090	1	1	
National Molasses Co., Cincinnati, Oh. 45246	10	10	
National Molasses Co., Willow Grove, Pa. 19090	4	1	3
National Molasses Co., Knoxville, Tn. 37920	1	1	
National Oats Co., East St. Louis, Il. 62205	12	12	
New Era Milling Co., Arkansas City, Kansas 67005	1	1	
Charles Nunn & Sons Milling, Evansville, In. 47712	24	23	1
Nutrena Mills, Inc., Minneapolis, Mn. 55440	23	22	1
Orleans Dog Candy Co., Chicago, Il. 60603	1	1	
Owensboro Grain Co., Inc., Owensboro, Ky. 42301	18	17	1
Owensboro Milling Co., Owensboro, Ky. 42301	18	14	4
Packmaster, Inc., Cincinnati, Oh. 45208	2	2	
Pan American Mills, Bowling Green, Ky. 42101	14	13	1
Pendletown County Mills, Falmouth, Ky. 41040	1	1	
Stanley Penn & Sons, Lexington, Ky. 40508	1	1	
Peter Hand Foundation, Waukegan, Il. 60085	1	1	
Chas. Pfizer & Co., Inc., New York, N. Y. 10017	1	1	
Pierce & Williams, Hopkinsville, Ky. 42240	5	5	
Pillsbury Company, Minneapolis, Mn. 55440	1	1	
Pilot Stores, Inc., Cincinnati, Oh. 45214	1	1	
Pittsburgh Plate Glass Co., Red Wing, Mn. 55066	1	1	
Planters Manufacturing Co., Clarksdale, Ms. 38614	2	1	1
Planters Oil Mill, Tunica, Ms. 38676	2	1	1
Princeton Mills, Princeton, Ky. 42445	7	7	
Producers Farm Center, Clinton, Ky. 42031	2	2	
Professional Feeds, Div. Intl. Milling Co., Kansas City, Mo. 64116	1	1	
Quaker Oats Company, Chicago, Il. 60654	28	25	3
Quaker Oats Company, Memphis, Tn. 38108	4	4	
Ralston Purina Company, St. Louis, Mo. 63199	465	434	31
Ralston Purina Company, Nashville, Tn. 37202	3	3	
Randolph Milling Co., Bandana, Ky. 42022	2	2	
Reelfoot Alfalfa Mill, Tiptonville, Tn. 38261	2	2	
Regal Feed Mills, Nashville, Tn. 37202	1	1	
Rival Pet Foods, Chicago, Il. 60632	2	1	1
Riverside Oil Mill, Marks, Ms. 38646	2	1	1
Robbins Brothers, Auburn, Ky. 42206	1	1	
Robertson Corporation, Brownstown, In. 47220	16	15	1
Robertson Corporation, Seymour, In. 47274	4	4	
Allen Robertson & Co., Louisville, Ky. 40202	15	12	3
Robinson Grain Co., Hickman, Ky. 42050	1	1	
Robinson Milling Co., Somerset, Ky. 42501	15	15	
Rogers Feed Store, Corinth, Ky. 41010	6	6	
P. G. Rose & Company, Inc., Nashville, Tn. 37211	2	2	
Russell Springs Milling Co., Russell Springs, Ky. 42642	2	2	
Sandusky Mill, Harrodsburg, Ky. 40330	8	8	
Charles H. Schenck & Sons, Vincennes, In. 47591	2	1	1
John Schlemmer, Harrison, Oh. 45030	3	3	
Scott County Milling Co., Sikeston, Mo. 63801	13	13	
Joseph E. Seagram & Sons, New York, N. Y. 10022	8	7	1
J. R. Short Milling Co., Mt. Vernon, In. 47620	3	3	
Siemer Milling Co., Teutopolis, Il. 62467	4	4	
Simpsons Milling Co., Waynesburg, Ky. 40489	1	1	
J. Allen Smith & Co., Knoxville, Tn. 37917	4	4	
Smithfield Milling Co., Smithfield, Ky. 40068	1	1	
Snyder Molasses Co., Chicago, Il. 60626	2	2	
Solar Nitrogen Chem. Inc., Lima, Oh. 45801	1	1	
Southern Cotton Oil Co., Inc., Huntsville, Al. 35804	1	1	
Southern Cotton Oil Co., Inc., Memphis, Tn. 38104	1	1	
So. States Bardstown Coop., Bardstown, Ky. 40004	2	2	
So. States Bowling Gr. Coop., Bowling Green, Ky. 42101	2	2	
So. States Flemingsburg Coop., Flemingsburg, Ky. 41041	2	2	

TABLE 1 REPORT OF OFFICIAL FEED SAMPLES ANALYZED, 1967

For samples not passed see Table 2

NAME AND ADDRESS OF MANUFACTURER	Number of Samples Analyzed and Examined	Number of Samples Passed	Number of Samples Not Passed
So. States Frankfort Coop., Frankfort, Ky. 40601	1	1	
So. States Hardin Coop., Elizabethtown, Ky. 42701	3	3	
So. States Harrodsburg Coop., Harrodsburg, Ky. 40330	1	1	
So. States Hopkinsville Coop., Hopkinsville, Ky. 42240	5	5	
So. States LaGrange Coop., LaGrange, Ky. 40031	3	3	
So. States Lebanon Coop., Lebanon, Ky. 40033	1	1	
So. States Leitchfield Coop., Leitchfield, Ky. 42754	3	3	
So. States London Coop., London, Ky. 40741	1	1	
So. States Owenton Coop., Owenton, Ky. 40359	1	1	
So. States Somerset Coop., Somerset, Ky. 42501	1	1	
So. States Coop., Baltimore, Md. 21203	395	361	34
So. States Coop., Hay & Ingredient Div., Baltimore, Md. 41203	1	1	
So. States Cooperative, Richmond, Va. 23213	12	12	
Sowell Brothers Feed Mill, Cerulean, Ky. 42215	1	1	
Woodford Spears & Sons, Paris, Ky. 40361	9	9	
Spen-Well Feed Co., Winchester, Ky. 40391	59	49	10
Spencer Farm Service, Taylorsville, Ky. 40071	2	2	
A. E. Staley Manufacturing, Decatur, Il. 62525	5	5	
Stanford Creamery, Inc., Stanford, Ky. 40484	1	1	
Stewarts Feed Mill, Flat Lick, Ky. 40935	1		1
Strongheart Packing Co., Chicago, Il. 60604	1	1	
Sturgis Milling Co., Sturgis, Ky. 42459	13	10	3
Summer Shade Roller Mills, Summer Shade, Ky. 42166	2	2	
Sun-Ray Feed Mills, Inc., Lexington, Ky. 40508	4	4	
Sunshine Feed Mills, Inc., Red Bay, Al. 35582	3	2	1
Sunshine Molasses Co., Somerset, Ky. 42501	6	6	
Supreme Mills, Glasgow, Ky. 42141	63	62	1
D. B. Sutherland & Sons, Bloomfield, Ky. 40008	15	10	5
Sweet Feed Mills, Inc., Bowling Green, Ky. 42101	3	3	
Swift & Co., Pet Foods, Chicago, Il. 60604	3	3	
Swift & Co., National Stockyards, Il. 62071	1		1
Swift & Co., Feed Mill, Memphis, Tn. 38102	2	2	
T & H Feed Service, Lebanon, Ky. 40033	2	1	1
Tabor Enterprises, Columbia, Ky. 42728	11	11	
Teater & Cassity, Nicholasville, Ky. 40356	2	2	
Thorobred Company, Inc., Waynesville, Oh. 45068	2	1	1
Thurmonds Coal & Feed Co., Murray, Ky. 42071	3	3	
Trenton Oil Mill Co., Trenton, Tn. 38382	1	1	
Tri-County Farm Supply, Corbin, Ky. 40701	3	3	
Tri-State Molasses Co., Inc., Nashville, Tn. 37213	4	4	
Tri-State Molasses Co., Owensboro, Ky. 42301	4	4	
Tupelo Oil Mill, Inc., Tupelo, Ms. 38801	3	2	1
Union County Grain Co., Sturgis, Ky. 42459	1	1	
Usen Products Co., Woburn, Ma. 01801	1		1
Warners Farm Supply, Somerset, Ky. 42501	4	4	
George Wiedemann Brewing Co., Newport, Ky. 41071	1	1	
Weisenbergers Mills, Midway, Ky. 40347	10	10	
West Ninth Street Mill, Owensboro, Ky. 42301	3	2	1
West Tennessee Soya Mill, Inc., Tiptonville, Tn. 38257	6	6	
Western Grain Company, Birmingham, Al. 35201	3	3	
Martha White Foods, Nashville, Tn. 37202	2	2	
Martha White Mills of W.Va., Huntington, W. Va. 25706	2	2	
Whiz Pet Food Company, Seattle, Wa. 98114	1		1
R. L. Wiles Feed Mills, Inc., Nashville, Tn. 37210	1		1
Williamstown Roller Mill, Williamstown, Ky. 41097	7	6	1
Wilson Feed Mill, Annville, Ky. 40402	1	1	
Winn Milling Co., Greensburg, Ky. 42743	3	3	
Woodford Feed Co., Versailles, Ky. 40383	3	3	
Yazoo Valley Oil Mill, Inc., Greenwood, Ms. 38930	1	1	
	3091	2826	265
		91%	9%

TABLE 2 SAMPLES CLASSIFIED AS "NOT PASSED"

MANUFACTURER, ADDRESS AND BRAND	GUARANTEED	FOUND
Agway, Inc., Ithaca, N. Y. 14851 Concentrated Dog Food	Crude Fat 9.0%	11.7%
Allied Mills, Inc., Libertyville, Ill. 60048 Wayne Pig Balancer Med. Wayne Pig Balancer Med. Wayne High Fiber Pullet Developer Med. M-69 Wayne 42% Beef Balancer Med. M-33 Wayne T C Rockets Med M-65 Wayne Calf Krunch TM Med. Wayne 16% Sugarine Pelleted Dairy Topper Cattle Supplement Pellets P.P.-Z Hog Wormer, Medicated 38% Universal Mixer Wayne Pip-Z Hog Wormer M. Pellets Medicated Wayne 42% Dairy Mix. Supplement Wayne Tail Curler Rockets, Medicated M-65	Crude Fat 9.0% Streptomycin 108.0 gm/T Streptomycin 108.0 gm/T Crude Protein 14.0% Amprolium 0.0125% Chlortetracycline 70 gm/T Chlortetracycline 100 gm/T Penicillin 50 gm/T Chlortetracycline 25.0 gm/T Crude Protein 16% Crude Protein 32.0% N.P.N. 16% Crude Protein 15.0% Crude Protein 36.0% Piperazine 0.22% N.P.N. 19.0% Salt 4.75% Chlortetracycline 100.0 gm/T Penicillin 50.0 gm/T Sulfamethazine 0.011%	47.0 gm/T 163.4 gm/T 21.8% 0.0099% 0.00 38.59 gm/T 0.00 11.8 gm/T 21.6% 36.6% 19.0% 20.7% 43.4% 0.11% 21.3% 5.9% 68.1 gm/T 6.8 gm/T 0.0086 %
Allied Food Distributors, Atlanta, Ga. 30318 Streak Dog Food	Crude Protein 10.0%	7.4%
American Kennel Foods, Russellville, Ky. 42276 K 9 Go Dog Food	Crude Fat 7.5%	12.6%
Anderson and Spilman, Danville, Ky. 40422 A & S 16% Dairy Feed	Crude Protein 16.0% N.P.N. 5.33% Crude Fiber 8.0%	21.7% 7.4% 9.4%
Anglo Sweet Feed Mill, Inc., Owensboro, Ky. 42301 Ace Perfection Pig & Hog Grower	Crude Fat 3.0%	6.5%
Ashland Milling Co., Inc., Ashland, Ky. 41101 Ideal Special 24% Dairy Feed Mi-Choice 16% Dairy Feed Mi-Choice 16% Dairy Feed	Crude Protein 24.0% N.P.N. 8.0% Crude Protein 16.0% N.P.N. 5.0% Crude Protein 16.0% N.P.N. 5.0%	29.1% 13.3% 21.0% 8.8% 20.8% 8.6%
Auburn Mills, Inc., Auburn, Ky. 42206 Leader Wheat Bran Leader Wheat Bran	Crude Fiber 8.0% Crude Fiber 8.0%	12.6% 11.0%
Aubrey Feed Mills, Inc., Louisville, Ky. 40204 Red A HF Hi Energy Broil M. Red A HF Hi Energy Broil M. Red A HF Hi Energy Broil M. Red A HF HE Broiler Ration Med. 38% Protein Block Mix-Mo-Las Red A 20 Baby Pig Creep Medicated Hominy Feed Red A 50% Cattle Supplement Red A Special Dog Food Red A HF Hi Energy Broiler Med. Mix-Mo-Las 44% Soy Bean Meal Solv. Extr.	Crude Fat 7.0% Crude Fiber 3.0% Amprolium 0.0125% Crude Fat 7.0% Amprolium 0.0125% Crude Fat 7.0% Crude Fiber 3.0% Amprolium 0.0125% Crude Fat 7.0% Crude Fiber 3.0% Crude Protein 38.0% Calcium 3.0% Crude Fiber 8.0% Chlortetracycline 100 gm/T Penicillin 50.0 gm/T Sulfamethazine 0.011% Crude Fat 5.0% Crude Protein 50.0% Crude Protein 24% Crude Fat 7.0% Crude Protein 7.0% Sugar, invert 42.0% Crude Protein 44.0%	9.6% 3.7% 0.0157% 10.0% 0.0158% 9.1% 3.8% 0.0152% 9.3% 3.8% 33.8% 4.8% 10.2% 43.1 gm/T 23.7 gm/T 0.0064% 2.7% 57.5% 29.2% 9.4% 13.1% 33.4% 49.4%



TABLE 2 SAMPLES CLASSIFIED AS "NOT PASSED"

MANUFACTURER, ADDRESS AND BRAND	GUARANTEED	FOUND
Red A 26% Game Bird Grower Pellets	Crude Protein 26.0%	31.9%
Red A 38% Protein Block	Calcium 3.0%	5.2%
	Iron 0.35%	0.139%
	Manganese 0.1500%	0.051%
	Zinc 0.1500%	0.015%
Red A 38% Protein Block	Calcium 3.0%	5.7%
	Iron 0.35%	0.15%
	Manganese 0.15%	0.07%
	Zinc 0.15%	0.013%
Red A 32% Cattle Supplement Meal	Crude Protein 32.0%	37.2%
Red A 32% Cattle Supplement Meal	Crude Protein 32.0%	37.1%
Red A 38% Protein Block	Crude Protein 38%	31.9%
	N.P.N. 14.2%	8.4%
		This feed contained a few rice hulls.
Aubrey's Special Dog Food	Crude Protein 24.0%	21.4%
Aubrey's Special Dog Food	Crude Fat 7.0%	9.4%
Bagdad Roller Mills, Bagdad, Ky. 40003		
Rocket Age Pig Starter Pellets M Medicated	Chlortetracycline 100 gm/T	38.1 gm/T
	Penicillin 50.0 gm/T	17.4 gm/T
	Sulfamethazine 0.011%	0.0065%
Baughman Milling Company, Stanford, Ky. 40480		
Banner Mixed Feed	Crude Fat 3.5%	6.2%
B. A. Bernard & Co., Inc., Camden, N. J. 08140		
Trim Horsemeat By-Products Dog Food	Crude Protein 12.0%	9.5%
	Crude Fat 4.0%	8.3%
Boones Feed Store, Stanford, Ky. 40484		
Boone's Special 16% Dairy Feed	Crude Fiber 5.2%	7.4%
Boone's Special 16% Dairy Feed	Crude Fiber 5.2%	7.8%
Browder Milling Company, Fulton, Ky. 42041		
Browder's 40% Hog Supplement Med. Pellets	Arsanilic Acid 0.050%	0.026%
Bryant & Crume Milling Co., Caneyville, Ky. 42721		
12½ Hog Fattener, Medicated	Arsanilic Acid 0.01%	0.0
40% Hog Concentrate Medicated	Crude Protein 40.0%	49.0%
	Arsanilic Acid 0.05%	0.0213%
	Penicillin 12.5 gm/T	1.5 gm/T
Hog Wormer Medicated	Arsanilic Acid 0.01%	0.0052%
12½ Hog Fattener Medicated	Arsanilic Acid 0.01%	0.0058%
Buhler Mills, Lexington, Kentucky 40506		
Cracker Jack Porkmaker Hog Feed	Crude Fiber 4.0%	6.1%
Cracker Jack Pig & Sow Ration, Pellets "16"	Crude Protein 16.0%	13.8%
Cadiz Milling Company, Cadiz, Ky. 42211		
Check-R-Mix Hog Finisher # 2 (D)	Crude Protein 12.0%	21.4%
Caneyville Roller Mill Co., Caneyville, Ky. 42721		
Ky. Farm 12% Hog Finisher, Medicated	Arsanilic Acid 0.01%	0.0141%
Ky. Farm 18% Hog Finisher Medicated	Arsanilic Acid 0.01%	0.0053%
Central Soya Co., Inc., Ft. Wayne, Ind. 46802		
Master Mix Sow & Pig Bio Concentrate		Not Registered.
Master Mix 44% Dairy Suppl. 673	Salt 3.5%	1.0%
Master Mix Hog Developer	Crude Protein 14.0%	17.9%
	Arsanilic Acid 0.01%	0.0156%
Sweet Bulk'N Flakes	Crude Fiber 20.0%	23.5%
Baby Pig Creep 801-82A Medicated	Crude Protein 20.0%	27.7%
Master Mix Pro Block	Crude Protein 38.0%	35.8%
	N.P.N. 12.3%	9.7%
	Calcium 3.5%	7.6%
Master Blend Concentrate 667	Crude Protein 38.0%	34.3%
Master Mix Hound Pack	Crude Protein 22.0%	19.3%

TABLE 2 SAMPLES CLASSIFIED AS "NOT PASSED"

MANUFACTURER, ADDRESS AND BRAND	GUARANTEED	FOUND
Master Mix Egg Concentrate 263 Beef 20 (734)	Crude Fat 6.0% Crude Protein 20.0%	9.3% 25.1%
Citizens Milling Comaany, Somerset, Ky. 42501 16% Cumberland Mixed Feed	Crude Protein 16.0%	13.9%
Community Feed Mill, Belton, Ky. 42324 Johnson's 16% Dairy Feed	Crude Protein 16%	13.0%
Crescent Roller Mills, Inc. Taylorsville, Ky. 40071 Crescent 16 Dairy Feed	Crude Protein 16%	12.8%
Custom Feed Mills, Morganfield, Ky. 42437 C.M. 42% Beef Supplement	Crude Protein 42.0%	47.3%
Dearborn Mills, Aurora, Ind. 47001 Success Dog Food 40 Pig & Hog Supplement	Crude Fat 3.5% Penicillin 9 gm/T	6.7% 3.8 gm/T
Diamond Crystal Salt Co., St. Clair, Mich. 48079 Salt, Champion Choice	Iron 0.16%	0.244%
Dixie Mills Co., E. St. Louis, Ill. 62202 Dixie Dry Lot Hog Finisher	Crude Protein 35.0%	26.2%
Dixie Portland Flour Mills, Memphis, Tenn. 38101 Reb Dog Food	Crude Protein 25.0%	31.8%
Early & Daniels Company, Inc., Cincinnati, Ohio 45203 Tuxedo 44% Dairy Supplement Tuxedo 20% Range Cubes	Crude Protein 44.0% N.P.N. 22.0% Crude Protein 20.0% N.P.N. 6.55%	49.5% 26.9% 25.6% 8.0%
F. L. Emmert Company, Inc., Cincinnati, O. 45214 24% Molasso-Malt	Crude Protein 24.0%	21.5%
John W. Eshelman & Sons, Circleville, O. 43113 Red Rose Pig & Sow Meal 611	Crude Protein 16.0%	21.5%
Famous Feed Mills, Nashville, Tenn. 37201 Famous 44% Dairy Supplement Famous 44% Dairy Supplement Famous Pig Starter Medicated	Calcium 3.25% Crude Protein 44% Crude Fiber 3.5% Arsanilic Acid 0.01%	6.6% 41.6% 4.40% 0.002%
Farmers & Ginners Cotton Oil Co., Birmingham, Ala. 35201 Premier Cottonseed Meal	Crude Fat 2.0%	5.2%
Frosty Morn Meats, Clarksville, Tenn. 37041 Meat and Bone Meal	Crude Fiber 3.0% Crude Fat 8.0%	4.2% 16.3%
Henry Fruechtenicht Co., Louisville, Ky. 40202 Producer Pig Grower, Medicated Producer Pig Grower Medicated Producer Dog Food Producer Pig Starter Med. Producer Beef Balancer S/A Medicated Producer 18% Pig & Sow Feed Medicated Producer 20% Starter & Grower Medicated  Producer Hog Balancer Medicated Producer Beef Balancer S/A Medicated Producer 44% Dairy Concentrate Producer 32% Beef Supplement Producer 44% Dairy Concentrate Producer 44% Beef Supplement  Producer 44% Dairy Concentrate	Arsanilic Acid 0.01% Arsanilic Acid 0.01% Crude Fat 6.0% Crude Fat 2.5% Salt 2.5% Crude Fat 3.5% Furazolidone 0.0008% Nitrofurazone 0.0055% Penicillin 15.0 gm/T Chlortetracycline 140.0 gm/T Crude Protein 44.0% Crude Protein 32.0% Crude Protein 44.0% Crude Protein 44.0% N.P.N. 21.0% Crude Protein 44.0% N.P.N. 21.0%	0.0182% 0.014% 9.2% 4.7% 4.8% 5.7% 0.0 0.0 0.0 50.2% 37.2% 41.8% 50.9% 24.8% 39.4% 12.4%
J. H. Fedders, Inc., Covington, Ky. 41014 Fedco 16% Dairy Feed	Crude Protein 16.0% N.P.N. 5.24%	22.6% 7.3%

TABLE 2 SAMPLES CLASSIFIED AS "NOT PASSED"

MANUFACTURER, ADDRESS AND BRAND	GUARANTEED	FOUND
Garrard Mills, Lancaster, Ky. 40444 Glen Lily Farm Feed	Crude Fiber 6.0%	7.3%
General Packing Co., Waynesville, Ohio 45068 Mid-West Beef & Beef Products for Dogs Mid-West Horsemeat-Meat By-Products for Dogs	Crude Fat 4.0% Crude Fat 4.0%	15.8% 16.1%
Goldenrod Oil Meal Sales Co., Memphis, Tenn. 38101 41% Cottonseed Meal	Crude Protein 41.0%	47.1%
W. R. Grace & Co., St. Louis, Mo. 63105 Grace Silage Mix	Crude Protein 110.0% Phosphorus 2.7%	117.7% 2.0%
W. R. Grace & Co., Atlantic Iowa 50022 Walnut Grove 4 x 4 Pig Grower 250 Medicated  Walnut Grove 4 x 4 Hog Concentrate Medicated  Walnut Grove 4 x 4 Pig Weaner Medicated	Penicillin 50 gm/T Sulfamethazine 0.011% Penicillin 20.0 gm/T Arsanilic Acid 0.1% Crude Fiber 2.5%	34.3 gm/T 0.008% 12.7 gm/T 0.077% 4.4%
The Great A & P Tea Co., Inc., Brockport, N.Y. 14420 Daily Dog Food Liver Flavor	Crude Protein 12.0%	9.9%
Guthrie Farm Service, Harrodsburg, Ky. 40330 Guthrie 12% Dairy Feed	N.P.N. 0.5%	2.6%
Guthrie Feed Mill, Guthrie, Ky. 42234 12% Dairy Feed	Crude Protein 12.0% N.P.N. 0.5%	15.8% 3.2%
Hayden Mill & Grain Co., Springfield, Ky. 40069 Magic Brand Sweet Dairy Feed	Crude Protein 14.0%	21.0%
Dr. Heinz Co., Bloomingburg, Ohio 34106 Nu-Way Pig Developer Pelleted  Nu-Way Chick Starter & Grower  Nu-Way All Mash Layer	Crude Protein 16.0% Streptomycin 37.5 gm/T Crude Protein 18.0% Streptomycin 18.75% Crude Protein 17.0% Crude Fiber 5.0%	19.7% 57.9 gm/T 24.5% 14.1 gm/T 23.2% 6.3%
Henderson Feed & Commission, Henderson, Ky. 42420 42% Feeding Meat Meal Tankage	Crude Protein 42.0% Crude Fat 14.0%	48.7% 16.6%
Burch Hester Feed Store, Hustonville, Ky. 40437 Big Chief 18% Sow & Pig Feed Medicated	3-Nitro-4 0.0025%	0.00
Honegger's & Co., Fairbury, Ill. 61739 Big H Pellepay Pig Grower Medicated  Big H 40% Hog Mixer	Crude Protein 16.0% Streptomycin 37.5 gm/T Crude Protein 40.0%	26.0% 50.4 gm/T 37.9%
Indiana Farm Bureau Coop. Assn., Indianapolis, Ind. 46204 High Efficiency All Mash Layer	Crude Protein 16.5%	23.3%
E. Kahn's Sons Co., Cincinnati, Ohio 45225 Kahns Diamond Meat Tankage	Crude Fat 6.0%	9.4%
Kal Kan Foods, Inc., Los Angeles, Calif. 90058 Kal Kan Chicken with Broth Kal Kan Chunk Beef & Meat By-Product  Kal Kan Chunk Beef & Meat By-Product With Gravy  Kal Kan Chicken Parts with Broth	Crude Fat 4.5% Crude Protein 12.0% Crude Fat 4.0% Crude Protein 12.0% Crude Fat 4.0% Crude Protein 10.5% Crude Fat 4.5%	10.0% 11.0% 7.6% 10.6% 9.1% 9.6% 11.5%
Ky. Animal By-Products, Russellville, Ky. 42276 Blue Ribbon Brand 50% Meat & Bone Meal	Crude Fat 10.0%	13.8%

TABLE 2 SAMPLES CLASSIFIED AS "NOT PASSED"

MANUFACTURER, ADDRESS AND BRAND	GUARANTEED	FOUND	
Ky. Chemical Industries, Cincinnati, Ohio 45232 K. C. Meat Meal Tankage K. C. 50% Meat and Bone Meal with Poultry By-Products	Crude Fat 4.0%	9.1%	
	Crude Fat 4.0%	11.1%	
Kraft Foods Co., Chicago, Ill. 60612 Pace Feed Booster Pellets	Crude Fat 5.0%	7.8%	
Lilly Bros. Seed Co., Hopkinsville, Ky. 42240 Custom Hog Medicated	Arsanilic Acid 0.005%	0.0025%	
Livestock Industries, Inc., Park City, Ky. 42160  Life Pig Grower Supplement Medicated Life Pig & Sow Ration Medicated Life Silage Supplement Life Hog Finisher Supplement Medicated Life Pig Grower Supplement Medicated Life Pig Grower Medicated	Oxytetracycline 100 gm/T	184.3 gm/T	
	Crude Protein 18.0%	24.2%	
	Calcium 22.0%	15.8%	
	Penicillin 15.0 gm/T	5.9 gm/T	
	Oxytetracycline 100 gm/T	381.4 gm/T	
	Arsanilic Acid 0.01%	0.0175%	
Livestock Supply Company, Owensboro, Ky. 42302 Cane Molasses Cane Molasses	Sugar, Invert 48.0%	37.0%	
	Sugar, Invert 48.0%	37.1%	
Lofton's Feed & Grain, Clay, Ky. 42404 Special Laying Mash Medicated	Arsanilic Acid 0.005%	0.0072%	
Lowe's Feed & Hatchery, Bowling Green, Ky. 42101 Lowe's Pig Grower Medicated Lowe's 42% Pig Concentrate Medicated  Lowe's Pig Wormer Medicated Lowe's Pig Starter Medicated  Lowe's 35% Hog Concentrate	Arsanilic Acid 0.01%	0.0059%	
	Arsanilic Acid 0.01%	0.0051%	
	Penicillin 10.5 gm/T	5.7 gm/T	
	Piperazine 0.20%	0.15%	
	Arsanilic Acid 0.01%	0.0195%	
	Bacitracin 75.0 gm/T	31.4 gm/T	
	Penicillin 25.0 gm/T	9.3 gm/T	
	Crude Protein 35%	34.2%	
McRedmond Bros., Nashville, Tenn. 37210 McRedmond Tankage with Bone	Crude Fat 8.0%	11.3%	
Mayfield Sweet Feed Mill, Mayfield, Ky. 42066 State Leader 44% Protein Dairy Supplement State Leader 16% Dairy Feed	Salt 3.0%	5.1%	
	Crude Protein 16.0%	19.0%	
Mayfield Milling Company, Mayfield, Ky. 42066 Grade A 40% Dairy Concentrate	Crude Protein 40.0%	46.5%	
M.F.A. Grain Division, Mexico, Missouri 65265 MFA 41% Soybean Meal	Crude Fat 3.5%	6.2%	
Midget Mills, Somerset, Ky. 42501 White Rose 20% Protein Layer Mash	Crude Protein 20.0%	16.3%	
Mid-South Feeds, Inc., Nashville, Tenn. 37209 32% Dairy Concentrate	Crude Protein 32.0%	26.3%	
Minter City Oil Mill, Minter City, Mississippi 38944 41% Cottonseed Meal	Crude Protein 41.0%	45.1%	
	Crude Fat 3.0%	5.3%	
Morton Salt Company, Chicago, Ill. 60606 Morton Salt	Iron 0.16%	0.24%	
Moorman Manufacturing Co., Quincy, Ill. 62302 Moormans A-D <sub>3</sub> Supplement	Crude Fat 3.0%	6.1%	
National Molasses Company, Willow Grove, Pa. 19090 Cane Bulk Molasses Black Strap Molasses Feed Molasses	Sugar, Invert 48.0%	35.3%	
	Sugar, Invert 48.0%	34.0%	
	Sugar, Invert 48.0%	33.9%	

TABLE 2 SAMPLES CLASSIFIED AS "NOT PASSED"

MANUFACTURER, ADDRESS AND BRAND	GUARANTEED	FOUND
Charles Nunn & Sons Milling, Evansville, Ind. 47712 Nunn-Better 40% Hog Supplement	Crude Protein 40.0%	37.7%
Nutrena Mills, Minneapolis, Minn. 55402 Nutrena RX-560 Medicated	Crude Protein 14.0%	24.4%
Owensboro Grain Co., Inc., Owensboro, Ky. 42301 Ograco 44% Protein Solvent Extracted Soybean Meal	Crude Protein 44.0%	52.0%
Owensboro Milling Co., Owensboro, Ky. 42301 True Test Beef Supplement True Test 44% Beef Supplement True Test 46% Hog Supplement Medicated True Test 46% Hog Supplement Medicated	Salt 1.50% Crude Protein 44.0% N.P.N. 14.15% Penicillin 90.0 gm/T Streptomycin 450.0 gm/T Penicillin 90.0 gm/T	6.6% 62.6% 33.2% 23.4 gm/T 179.8 gm/T 0.0
Pan American Mills, Bowling Green, Ky. 42101 16 Pig Grower Medicated	Arsanilic Acid 0.01%	0.0056%
Planters Oil Mill, Tunica, Miss. 38676 Cottonseed Meal	Crude Protein 41.0%	46.9%
Planters Manufacturing Co., Clarksdale, Miss. 38614 41% Protein Solvent Extracted Cottonseed Meal	Crude Protein 41.0%	46.7%
Quaker Oats Co., Chicago, Ill. 60654 Ful-o-Pep Gro-Pig Starter Medicated Ful-o-Pep Milking 40 Pellets Puss'N Boots Gourmet Fish & Broth	Chlortetracycline 100.0 gm/T Sulfamethazine 0.011% Crude Protein 40.0% N.P.N. 22.0% Crude Fat 4.5%	31.8 gm/T 0.0036% 37.7% 16.7% 11.0%
Ralston Purina Company, St. Louis, Mo. 63199 Purina Dairy Mineral Medicated Purina Special Steer Fatena L5 Purina Baby Pig Chow Medicated Purina Range Chow Block Purina Pig Chow 40 Medicated Purina Baby Pig Chow Medicated Purina Sweet Brew Purina Hog Finisher J Purina Broiler Chow Finisher # 2 Purina Broiler Chow Finisher # 1 Medicated Purina Hog Finisher Medicated Purina Feeder Pig Chow Medicated Purina Feeder Pig Chow Medicated Purina Cow Chow Concentrate 50% Purina Hog Chow (B) 3H Medicated Purina Hog Chow (B) 3N Medicated Purina Egg Chowder H Purina Chick Growena (L) ZO Medicated Purina Dairy Concentrate (G) 44% Purina Baby Pig Chow Medicated Checkers Purina Hog Chow (L) Purina Chick Growena (L) ZO Medicated Purina Broiler Chow Finisher # 1 MPA Medicated Purina Broiler Chow Finisher # 2 Purina Broiler Chow Starter Medicated	Phosphorus 16.0% Crude Protein 50.0% N.P.N. 30.0% Chlortetracycline 100.0 gm/T Penicillin 50.0 gm/T Salt 12.5% Crude Fat 5.0% Oxytetracycline 400.0 gm/T Penicillin 50.0 gm/T Crude Protein 20.0% 3-Nitro-4 0.005% Crude Fat 4.5% Crude Fat 4.5% 3-Nitro-4 0.005% Sulfamethazine 0.011% Chlortetracycline 100 gm/T Penicillin 50 gm/T Sulfamethazine 0.011% Crude Protein 50.0% N.P.N. 30.0% 3-Nitro-4 0.025% Oxytetracycline 50 gm/T Crude Protein 36.0% Oxytetracycline 50.0 gm/T Crude Fat 4.0% Zoalene 0.0083% Crude Protein 44.0% N.P.N. 22.0% Penicillin 50.0 gm/T Chlortetracycline 100 gm/T Chlortetracycline 50.0 gm/T Zoalene 0.0083% Crude Fat 4.5% Crude Fat 4.5% Crude Fat 4.5%	13.4% 35.5% 9.3% 45.4 gm/T 23.4 gm/T 10.3% 0.9% 1016.9 gm/T 24.5 gm/T 27.1% 0.0027% 11.0% 9.8% 0.0075% 0.0176% 165.7 gm/T 88.7 gm/T 0.0219% 45.5% 24.3% 0.002% 8.6 gm/T 43.1% 17.2 gm/T 9.0% 0.0037% 39.4% 8.6% 19.0 gm/T 52.2 gm/T 0.0 gm/T 0.0% 8.8% 8.2% 7.6%

TABLE 2 SAMPLES CLASSIFIED AS "NOT PASSED"

MANUFACTURER, ADDRESS AND BRAND	GUARANTEED	FOUND
Purina Hog Chow (B)	Oxytetracycline 50.0 gm/T	9.5 gm/T
Purina Medicated Farrowing Chow (L) FZ	Furazolidone 0.0165%	0.0038%
Purina Hog Chow (B)	Oxytetracycline 50.0 gm/T	10.9 gm/T
Purina Hog Chow (B) Checkers	Oxytetracycline 50.0 gm/T	10.4 gm/T
Purina Beef & Beef By-Products For Dogs	Crude Fat 7.5%	16.7%
Purina Beef & Beef By-Products For Dogs	Crude Protein 12.0%	10.5%
	Crude Fat 7.5%	15.4%
Reelfoot Alfalfa Mill, Tiptonville, Tennessee 38261		
Reelfoot Dehydrated Alfalfa	Crude Protein 17.0%	15.9%
	Crude Fiber 27.0%	32.0%
Rival Pet Foods, Chicago, Ill. 60632		
Rival Chicken Croquettes with Gravy	Crude Protein 10.0%	9.2%
	Crude Fat 3.0%	8.4%
Riverside Oil Mill, Marks, Miss. 38646		
41% Protein Cottonseed Meal	Crude Protein 41.0%	47.3%
Robertson Corporation, Brownstown, Ind. 47220		
Triple R Dog Food	Crude Protein 25.0%	37.3%
Allen Robertson Company, Louisville, Ky. 40202		
F-R-C Theravite 0.0044 Diethylstilbestrol Mix.	Crude Protein 80.0%	86.5%
	N.P.N. 78.6%	86.3%
	Crude Fiber 1.5%	3.1%
	Penicillin 20.0 gm/T	8.2 gm/T
	Penicillin 20.0 gm/T	7.4 gm/T
F-R-C 38% Grower Layer Concentrate Medicated		
Farm-R-Choice 38% Grower Layer Concentrate Med.		
Joseph E. Seagram & Sons, Inc., New York, N.Y. 10022		
Seagrams Corn Distillers Dried Grains	Crude Protein 25.0%	31.7%
	Crude Fiber 11.0%	12.0%
Charles H. Schenck & Sons, Vincennes, Indiana 47591		
Alfalfa Meal	Crude Fiber 27.0%	30.0%
Southern States Cooperative, Baltimore, Md. 21203		
Custom Hog Feed	Arsanilic Acid 0.0076%	0.0257%
	Penicillin 40.2 gm/T	69.0 gm/T
	Sulfamethazine 0.0088%	0.0208%
16% Dairy Feed	Crude Protein 16.0%	21.3%
Molasses	Sugar, Invert 48.0%	42.9%
40% Poultry Supplement Medicated	Crude Protein 40.0%	47.1%
Cane Molasses	Sugar, Invert 48.0%	35.8%
40% Poultry Supplement	Crude Fiber 3.5%	4.4%
Pig Starter Medicated "S"	Chlortetracycline 100.0 gm/T	0.0 gm/T
	Penicillin 50.0 gm/T	0.0 gm/T
	Amprolium 0.006%	0.0033%
Starter & Grower Mash Medicated	Arsanilic Acid 0.01%	0.0025%
Big Lay Medicated	Crude Fiber 7.0%	9.3%
Super Hog Supplement	Salt 7.5%	5.0%
	Crude Protein 32.0%	38.5%
Multi-Blend 32	N.P.N. 12.5%	15.7%
	Crude Protein 32.0%	38.1%
Multi-Blend 32	N.P.N. 12.5%	15.8%
	Crude Protein 44.0%	38.0%
Southern States Hi-Blend	N.P.N. 21.5%	0.7%
	Chlortetracycline 100.0 gm/T	38.6 gm/T
Southern States Pig Starter Medicated	Penicillin 50.0 gm/T	17.2 gm/T
	Sulfamethazine 0.011%	0.0056%
	Crude Protein 38.0%	35.8%
38% Sow & Pig Supplement Medicated	Arsanilic Acid 0.01%	0.0045%
Pig Developer Medicated	Crude Protein 18.0%	17.0%
S.S. Pig Starter	Chlortetracycline 100.0 gm/T	45.4 gm/T
	Sulfamethazine 0.011%	0.0057%
	Penicillin 50 gm/T	20.7 gm/T
Multi-Blend 32	Crude Protein 32.0%	37.1%
Pro-Blend 50	Crude Protein 50.0%	36.0%
Forage Extender	Crude Protein 12.0%	17.3%
S.S. Super Lay Mash Medicated	Crude Protein 22.0%	21.1%
	Arsanilic Acid 0.0166%	0.0081%
Reddi Ration Dog Food	Crude Protein 20.0%	29.3%
40% Poultry Supplement Medicated	Crude Protein 40.0%	37.0%

TABLE 2 SAMPLES CLASSIFIED AS "NOT PASSED"

MANUFACTURER, ADDRESS AND BRAND	GUARANTEED	FOUND
Beef Blend Medicated	Crude Protein 54.0%	51.6%
	N.P.N. 30.0%	21.1%
S.S. Super Blend "65"	Crude Protein 65.0%	62.4%
	N.P.N. 40.0%	32.9%
S.S. 38% Sow & Pig Supplement Medicated Pellets	Arsanilic Acid 0.04%	0.091%
S.S. 38% Sow & Pig Supplement Medicated Pellets	Penicillin 15.0 gm/T	0.0
Super Blend "65"	Crude Protein 65.0%	62.0%
S.S. 38% Sow & Pig Supplement Medicated Pellets	Penicillin 15.0 gm/T	3.9 gm/T
S.S. Super Blend "65"	Crude Protein 65.0%	46.6%
	N.P.N. 36.0%	10.0%
	Salt 3.0%	2.4%
S.S. Pig Aid Medicated	Penicillin 50.0 gm/T	22.3 gm/T
S.S. Beef Blend Medicated	Salt 7.0%	4.7%
S.S. Pig Aid Medicated	Penicillin 50.0 gm/T	20.9 gm/T
S.S. Beef Blend Medicated	Salt 7.0%	4.7%
Spem-Well Feed Co., Winchester, Ky. 40391		
Thoroughbred Hog Supplement "40" Pellet	Streptomycin 37.5 gm/T	0.0
Newco 24% Dairy Feed	Crude Protein 24.0%	14.3%
	N.P.N. 8.0%	4.4%
Newco 16% Dairy Feed	Crude Protein 16.0%	23.4%
Newco 24% Dairy Feed	Crude Protein 24.0%	19.5%
	N.P.N. 8.0%	2.6%
Newco 24% Dairy Feed	Crude Protein 24.0%	21.4%
	N.P.N. 8.0%	5.4%
Newco 16% Dairy Feed	Crude Protein 16.0%	21.6%
Newco Feeds Annies Sweet Feed	Crude Protein 18.0%	14.5%
	N.P.N. 5.3%	0.5%
Newco 40% Hog Supplement Cubes	Crude Protein 40.0%	36.3%
Newco Layer Ration Pellets	Crude Protein 16.0%	10.7%
Newco Feeds 16% Dairy	Crude Protein 16.0%	26.7%
	N.P.N. 5.3%	7.4%
Stewarts Feed Mill, Flat Lick, Ky. 40935		
Stewarts Best Hog Fattener	Crude Fiber 3.0%	5.4%
Sturgis Milling Co., Sturgis, Ky. 42459		
Susie Q 16% Sweet Dairy	Crude Protein 16.0%	21.5%
Happy's 18% Pig Starter Pellets A Medicated	Penicillin 50.0 gm/T	18.8 gm/T
Happy's 18% Pig Starter Pellets A Medicated	Penicillin 50.0 gm/T	23.9 gm/T
Sunshine Feed Mills, Inc. Red Bay, Alabama 35582		
Sunshine Dog Food	Crude Fat 8.0%	12.3%
Supreme Mills, Glasgow, Ky. 42141		
Supreme Citrus Pulp & Molasses	Crude Protein 5.0%	14.5%
D. B. Sutherland & Sons, Bloomfield, Ky. 40008		
26% Dog Food	Crude Protein 26.0%	33.4%
40% Hog Supplement	Crude Fat 3.0%	6.8%
		Adulterated With Poultry Feathers.
40% Hog Supplement	Crude Protein 40.0%	45.2%
N.R.G. Dog Food	Crude Protein 26.0%	23.1%
N.R.G. Dog Food	Crude Protein 26.0%	32.6%
		Adulterated With Feather Meal.
Swift & Company, National Stockyards, Ill. 62071		
Meat Meal Tankage	Crude Protein 60.0%	66.3%
T & H Feed Service, Lebanon, Ky. 40033		
16% Dairy Feed	Salt 4.0%	1.3%
Thorobred Co., Inc., Waynesville, Ohio 45068		
Thorobred Gourmet Pack All-Beef For Dogs	Crude Protein 12.0%	11.4%
	Crude Fat 6.0%	22.3%
Tupelo Oil Mill, Inc., Tupelo, Miss. 39209		
Tupelo Brand 41% Protein Cottonseed Meal	Crude Fiber 13.0%	14.2%

TABLE 2 SAMPLES CLASSIFIED AS "NOT PASSED"

MANUFACTURER, ADDRESS AND BRAND	GUARANTEED	FOUND
Usen Products Co., Woburn, Mass. 01801 Tabby Fish Flavor Cat Food	Crude Protein 14.0% Crude Fat 2.0%	13.0% 10.8%
Western Grain Co., Birmingham, Ala. 35201 Jim Dandy Dog Ration	Crude Protein 25.0%	30.5%
West Ninth Street Mill, Owensboro, Ky. 42301 Custom Dairy	Crude Protein 16.0%	13.3%
Whiz Pet Food Co., Seattle, Washington 98114 Kitty Salmon For Cats	Crude Fat 7.5%	13.2%
Wiedemann Brewing Co., Newport, Ky. 41071 Brewers Dried Grains	Crude Protein 26.0%	32.8%
R. L. Wiles Feed Mills, Nashville, Tenn. 37201 Square Deal Hog Supplement Feed	Crude Protein 40.0%	37.4%
Williamstown Roller Mill, Williamstown, Ky. 41097 Standard Mix Dairy	Crude Protein 16.0% N.P.N. 5.24%	13.0% 2.2%

4M--5-68