



*Charles Lamb (aged 23)
From the drawing by Robert Hancock, in 1798
now in the National Portrait Gallery*



John Lamb
The father of Charles Lamb



Samuel Salt, Modelled in Wax by John Lamb
From the original, lent by Miss Roscow





F. Groll

*Yours truly
Edamb*

Portrait Gallery of Hogg's Weekly Instructor.



Exemplar Eng. Co.

CHARLES LAMB



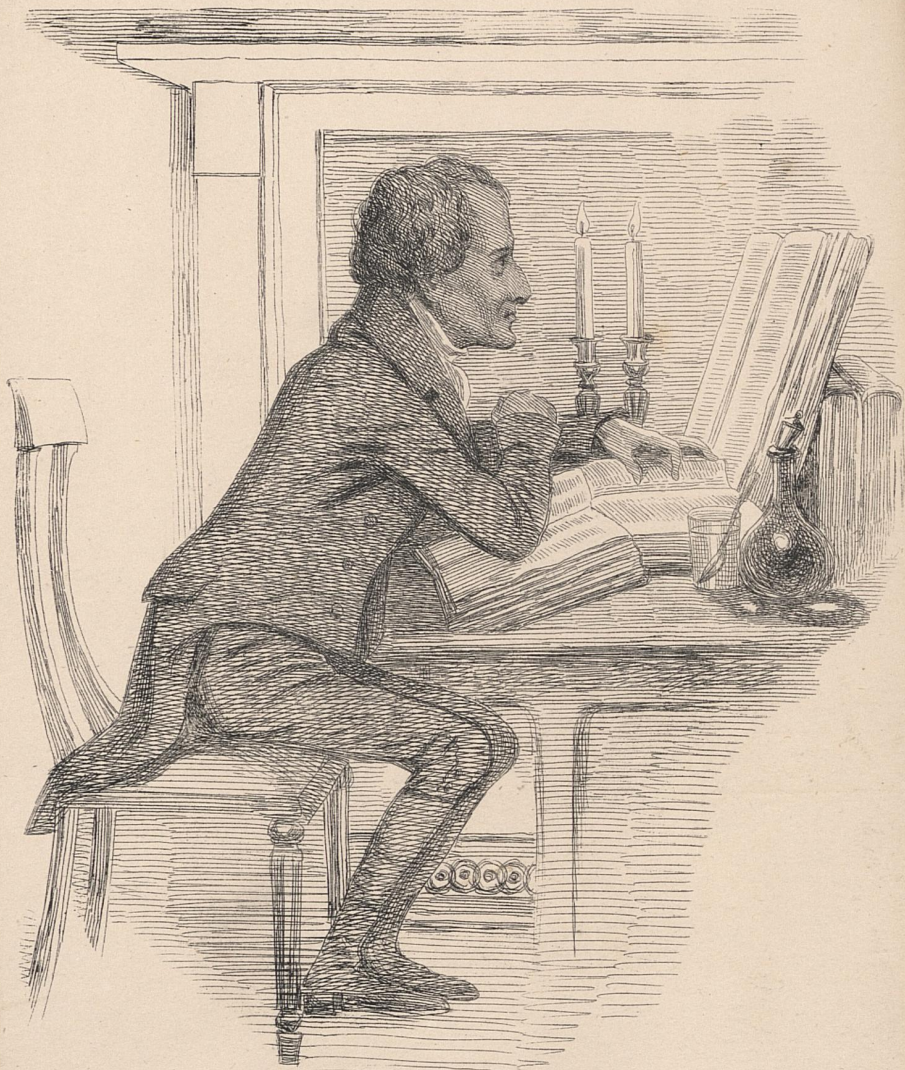
F. Groll

Yours truly
Edamb





Charles Lamb
"ÆLIA"



Yours ratherish unwell

Ch^s Lamb.

THE AUTHOR OF "ELIA".

Published by James Fraser, 215, Regent Street, London.



Chamb.

Barzels & Freeman. Prin^{ts}



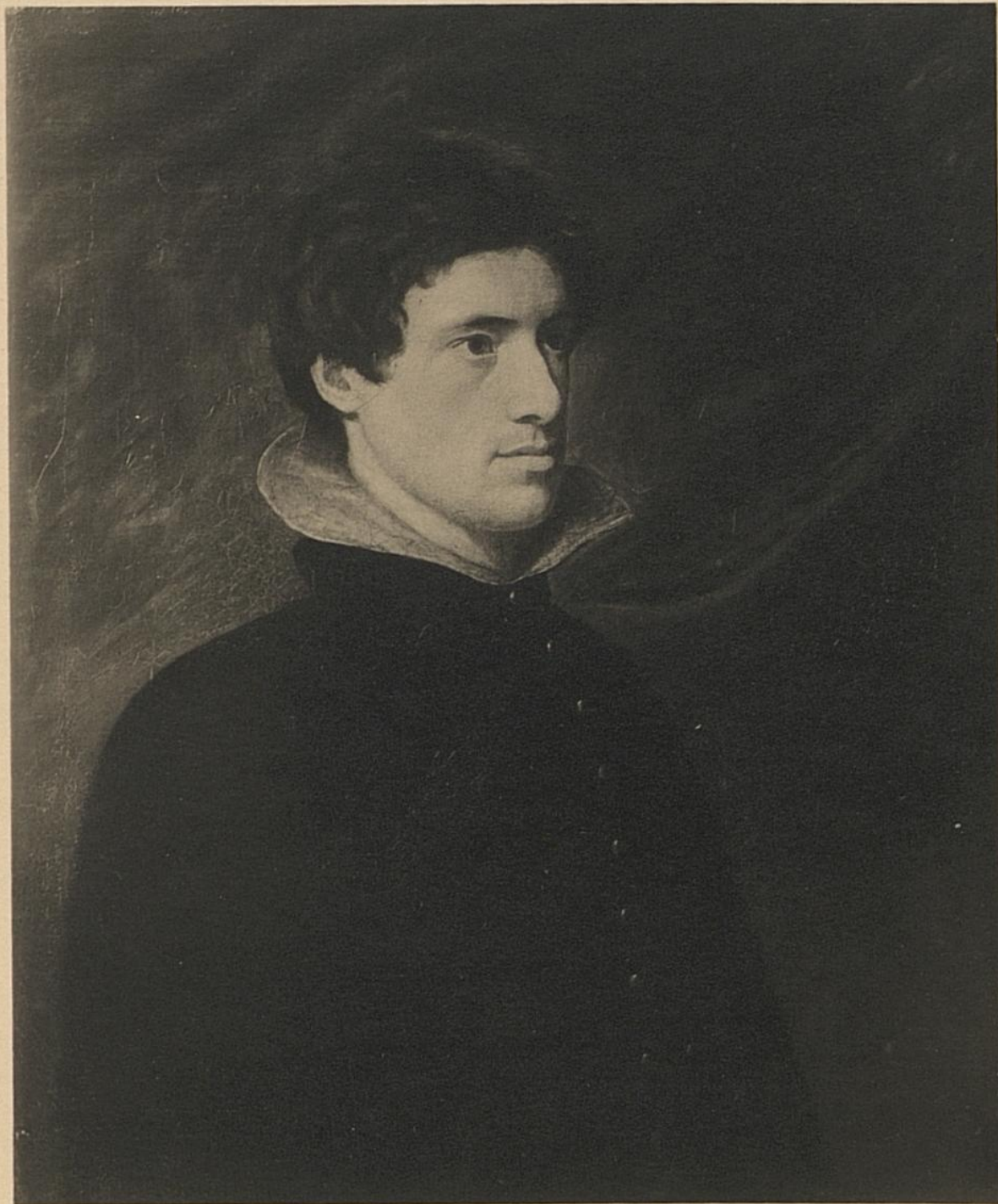
by Albert Rosenthal after Etching by Mackie

Ch. Lamb

Albert Rosenthal

To the care of Mr. North
H. Marshall

NATIONAL PORTRAIT GALLERY (507) COPYRIGHT.



CHARLES LAMB.
PAINTING BY WILLIAM HAZLITT.

POST CARD

CHARLES LAMB. 1775-1834.

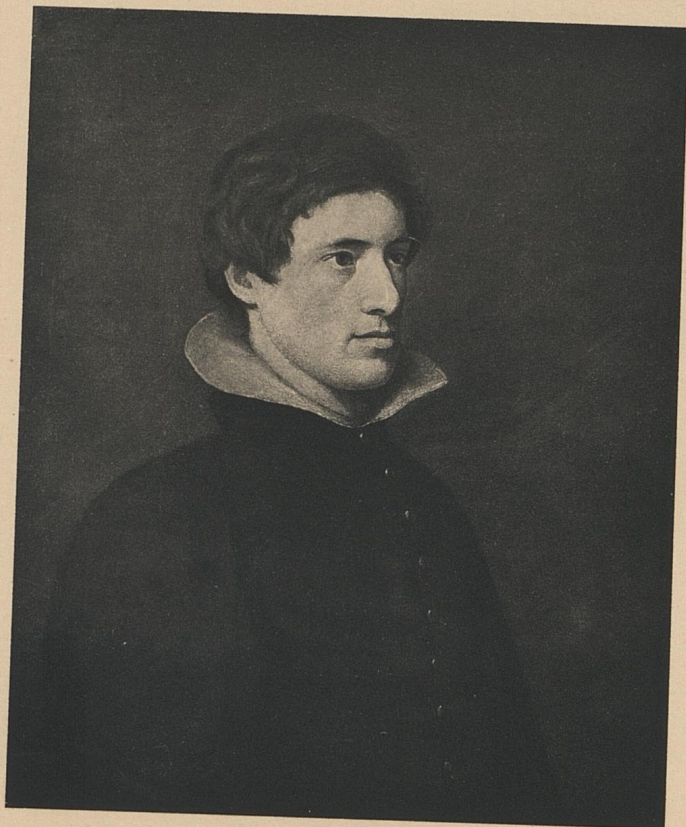
Son of a barrister's clerk. Entered the East India Office in 1792. In 1795 his sister Mary, in a fit of insanity, killed her mother and wounded her father but was released on her brother undertaking to be her guardian. Until Lamb's death brother and sister published books in common. Lamb is perhaps the best-loved of English authors. His *Essays*, his *Letters*, and the moral strength of his character justify this opinion. His *Specimens of English Dramatic Poets* (1808) marks and epoch in English criticism.

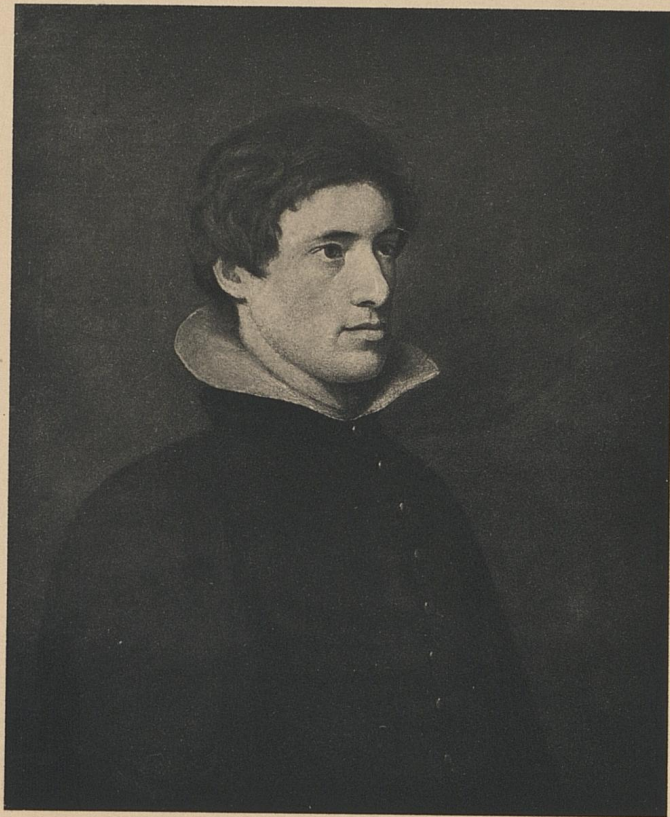
Augustine Birrell.

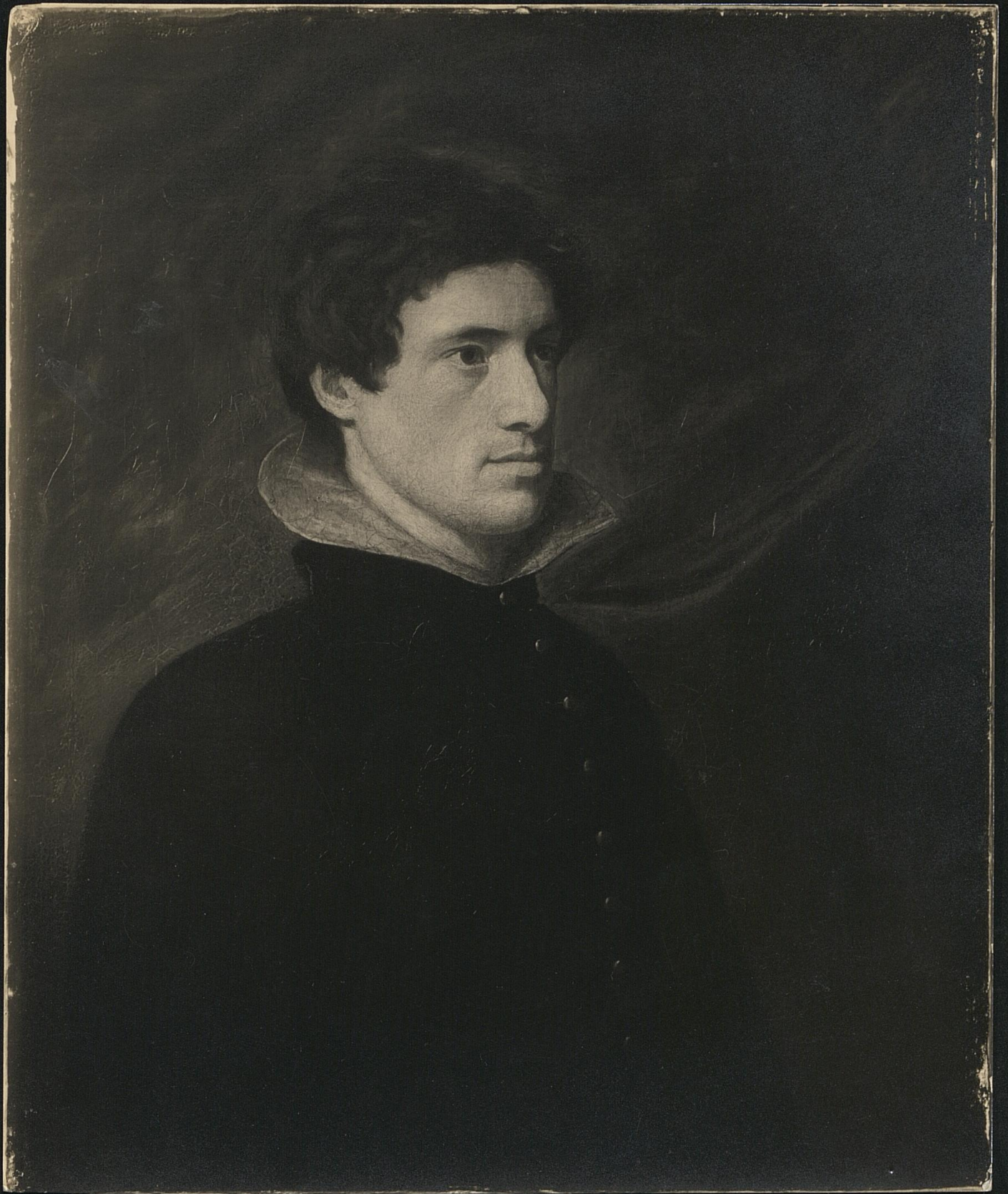
London

Dear Mr. North, July 1934

I thought of you today
as I visited the Centenary
Rooms in the National Gallery
to see the Lamb portraits.
Let me thank you again for
a pleasant half-hour last
month. Cordially - David K. Barnwell







5 1/4 x 7" Reduce to

4" x 5 3/8"

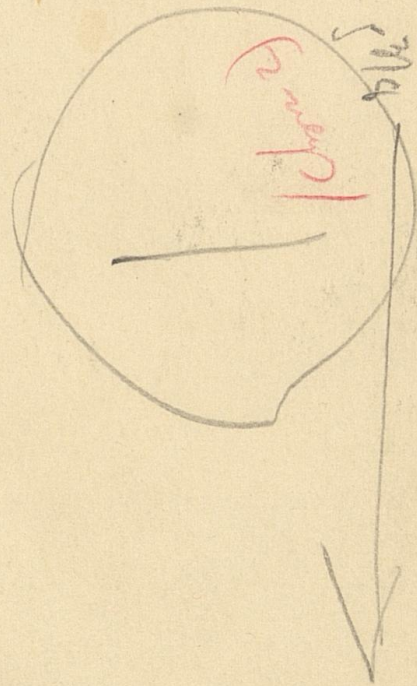
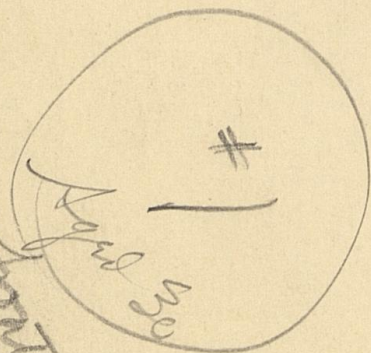
Photo engraving

52010

508

Reduce to 5 1/4

Portrait



Portrait



Crop

507 Chas. Lamb

4"

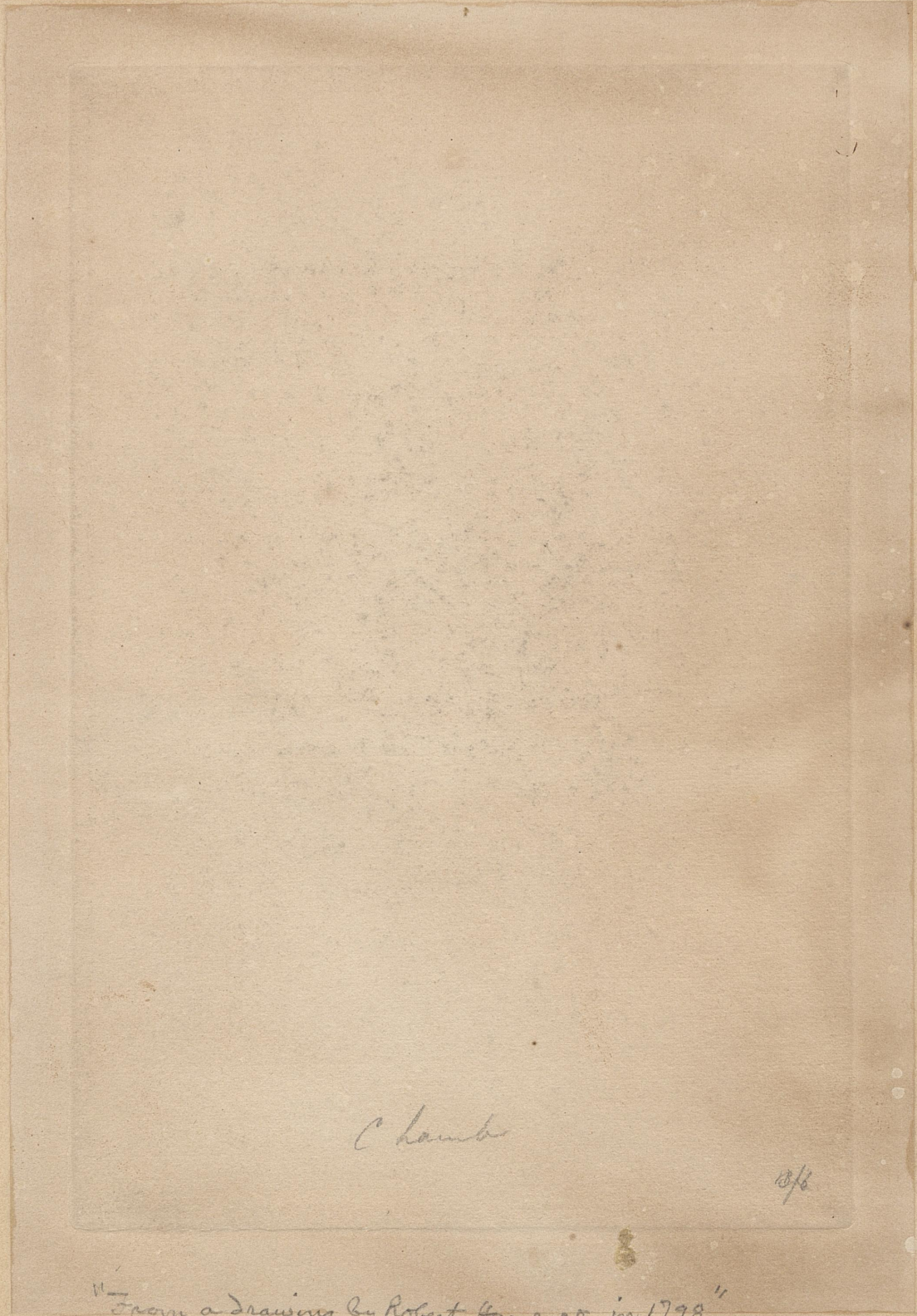
Crop



78 / 10 1/2
108 x 14 R

30 867

House 11



C Lamb

2/8

"From a drawing by Robert Hancock in 1798"
original in the National Maritime Museum



mat From E.B. Holden Collection



1850



J. A. Winter, lith.

Day & Son, Limited, Lith.

JOHN LAMB
(FATHER OF CHARLES LAMB)
(From a portrait in the possession of M^{rs} Moxon.)



H. Meyer. pinx.

Joseph Brown. sc.

Charles Lamb

See letter to Lord Hardwicke Nov. 1827

The original of this is in Lord Byron's *Contemporaries*
HTO 1828.

25



Charles Lamb.



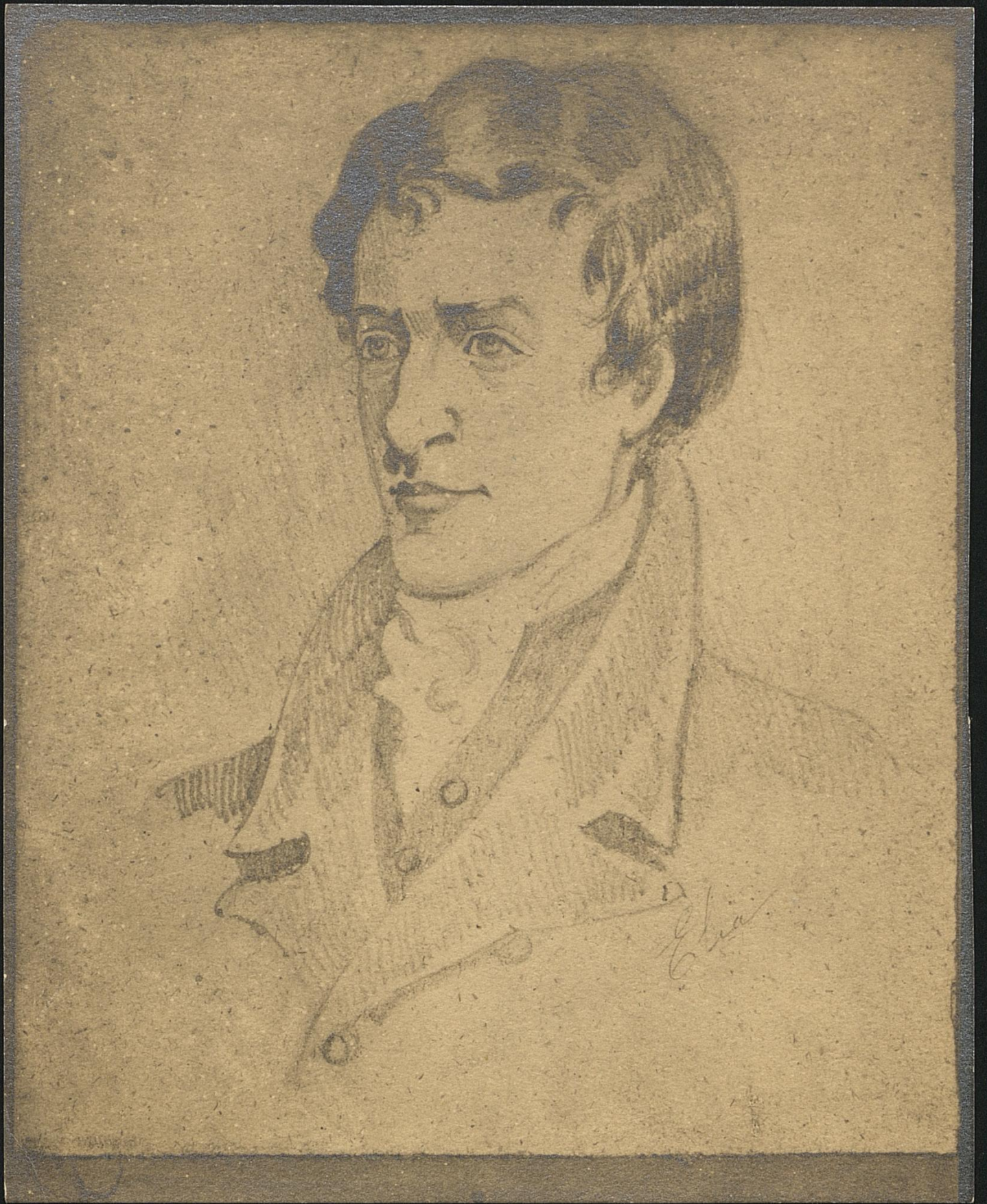
Painted by Meyer.

Engraved by H. Meyer

Charles Lamb,

"Elia"

1825



3 6449

ARTISTS ILLUSTRATORS, LTD.

17, FLEET STREET,

LONDON, E.C.

Donald Mackay



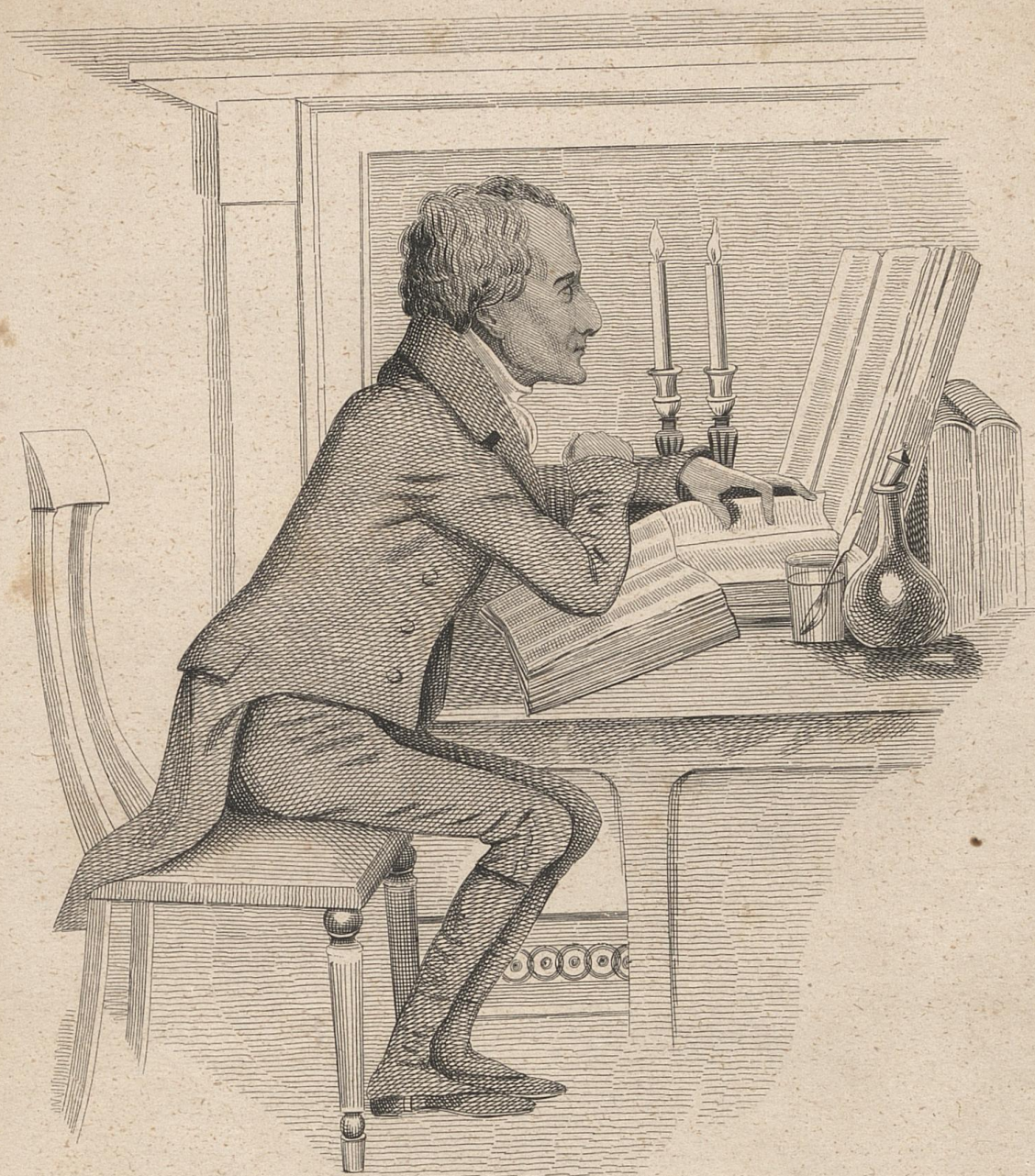
Pen & Ink Sketch of Hand -
After correction by Brook Peck-
ham





3. 5. 2. 6. 11. 05. 11. 05. 11. 05.

HENRY DIXON & SON
NEG. No.
76619

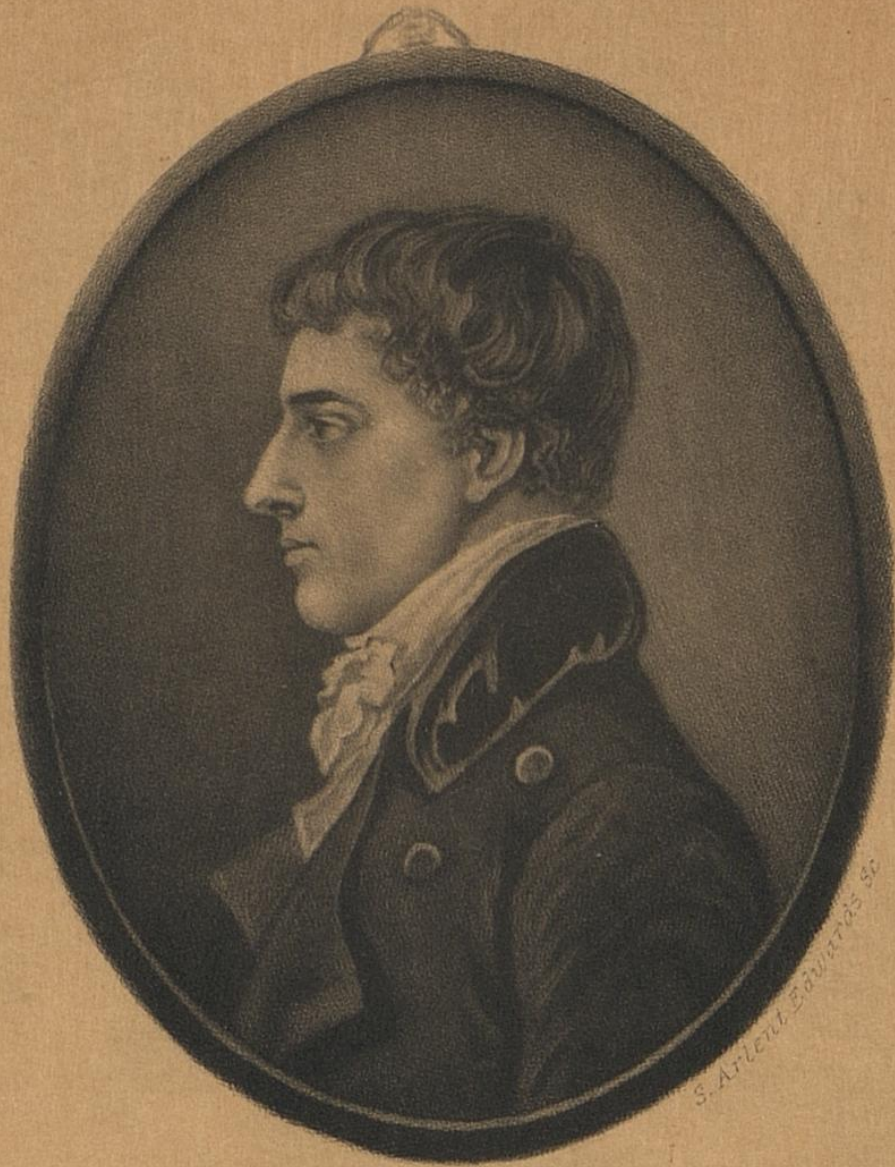


Joan is ratherish unwell

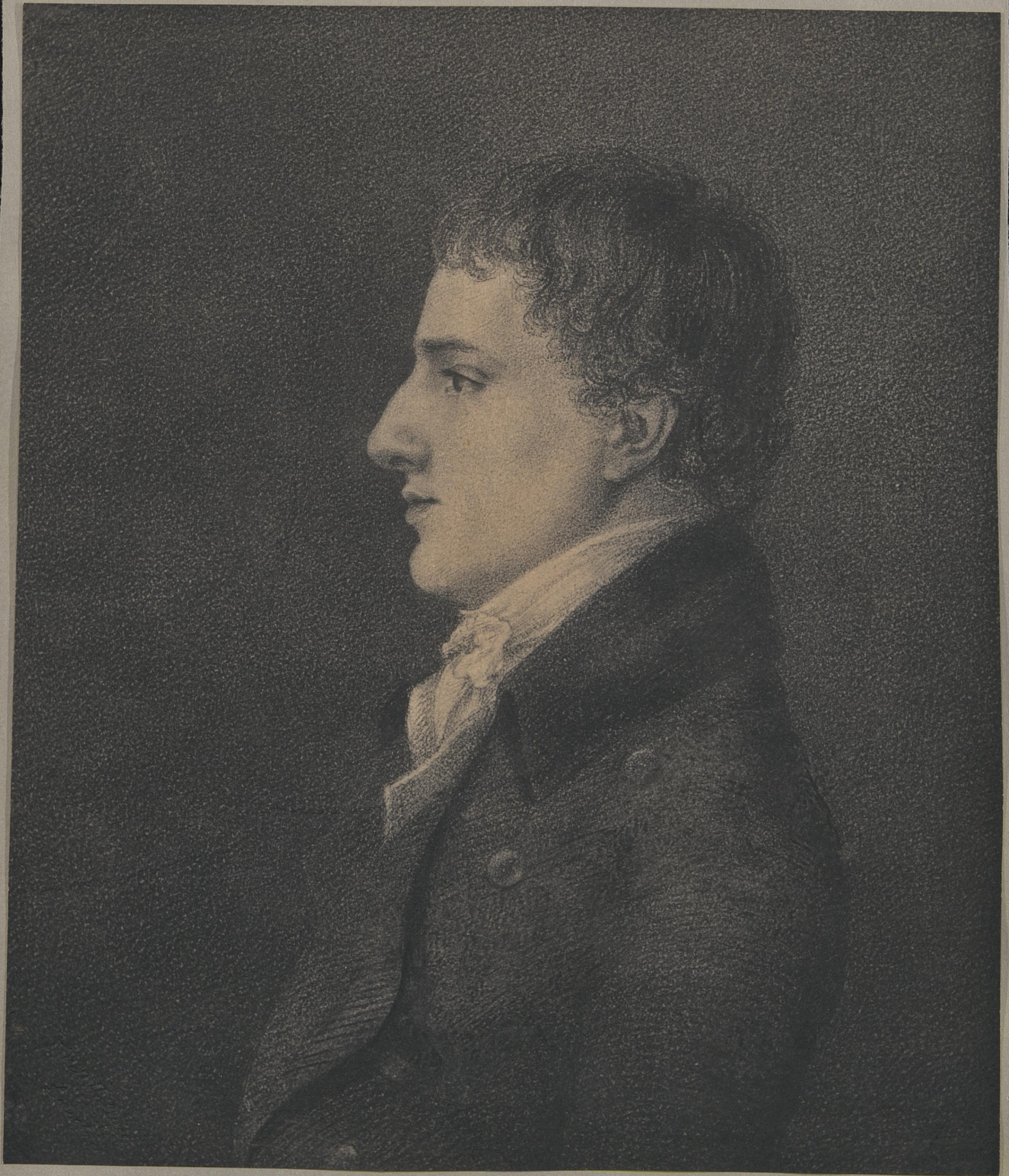
Ch. Lamb

THE AUTHOR OF 'ELIA.'

*



CHARLES LAMB





H. Meyer, pinxt.

Joseph Brown Sc.

Charles Lamb

Dr. H. M. H. D.