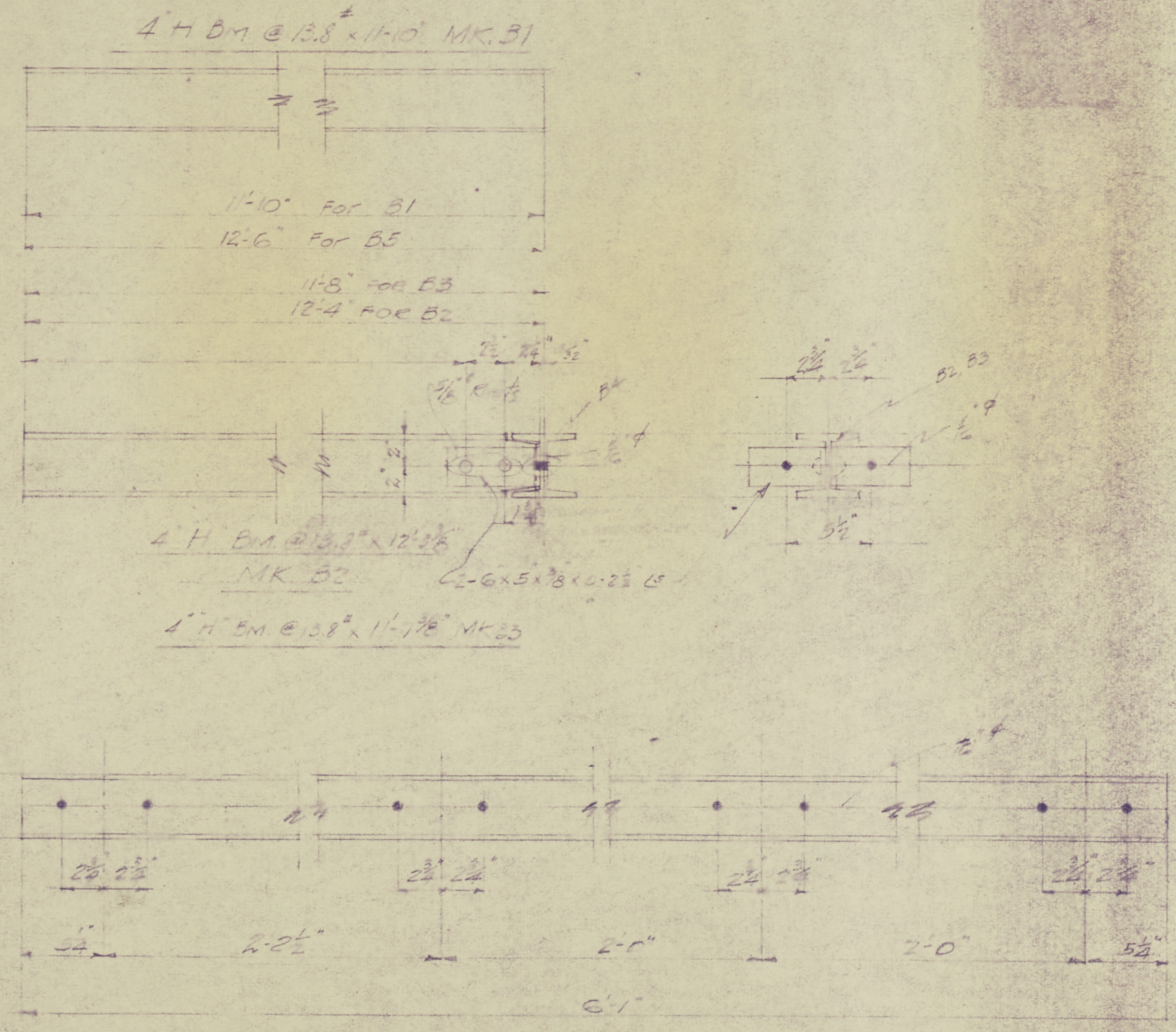


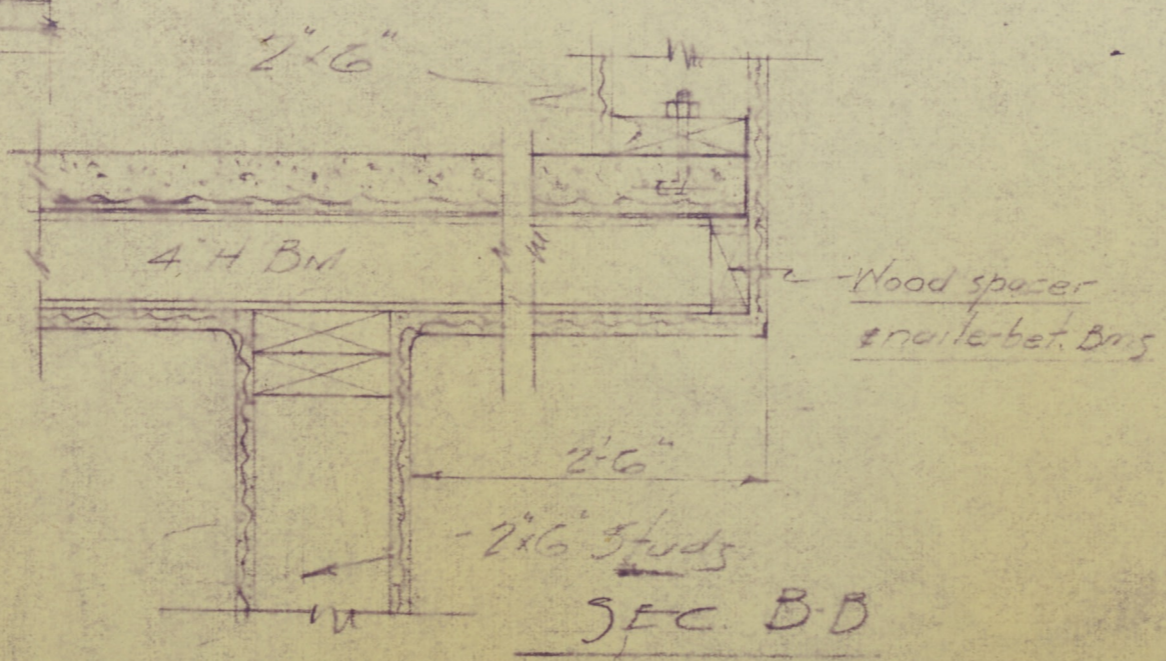
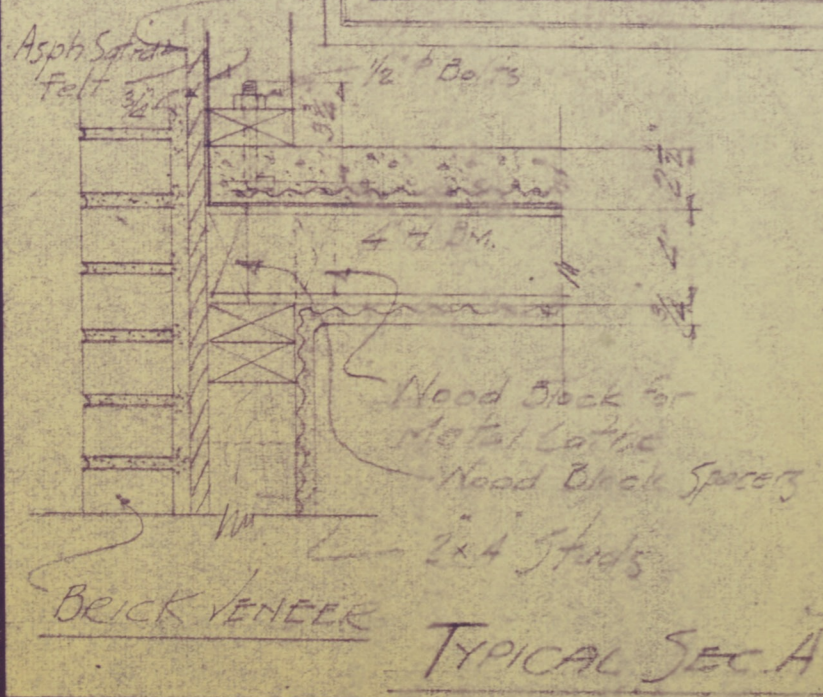
NOTE
Space Bms. each way from E



PAINT / COR L #10

MATERIAL REQUIRED

4-4" H BM AS SHOWN MK B1	
6 " " " " B2	
4 " " " " B3	
2 " " " " B4	
5 " " " " B5	
25 1/2" x 5" B. f. Hex. NUTS	



INLAND STEEL COMPANY
INCORPORATED.
WHEELWRIGHT, KENTUCKY.

THEATRE RENOVELLING
DETAIL OF STEEL ENT
FOR ROOM FLOOR

SCALE 1/4" = 1'-0" DATE 7-3-40
REVISED _____
MADE BY _____ TRACED BY _____
APPROVED BY _____

FILE NO. **24-S SH.7**

88MG Wheelwright Collection
Blueprints: 25, Inland Steel
390.25