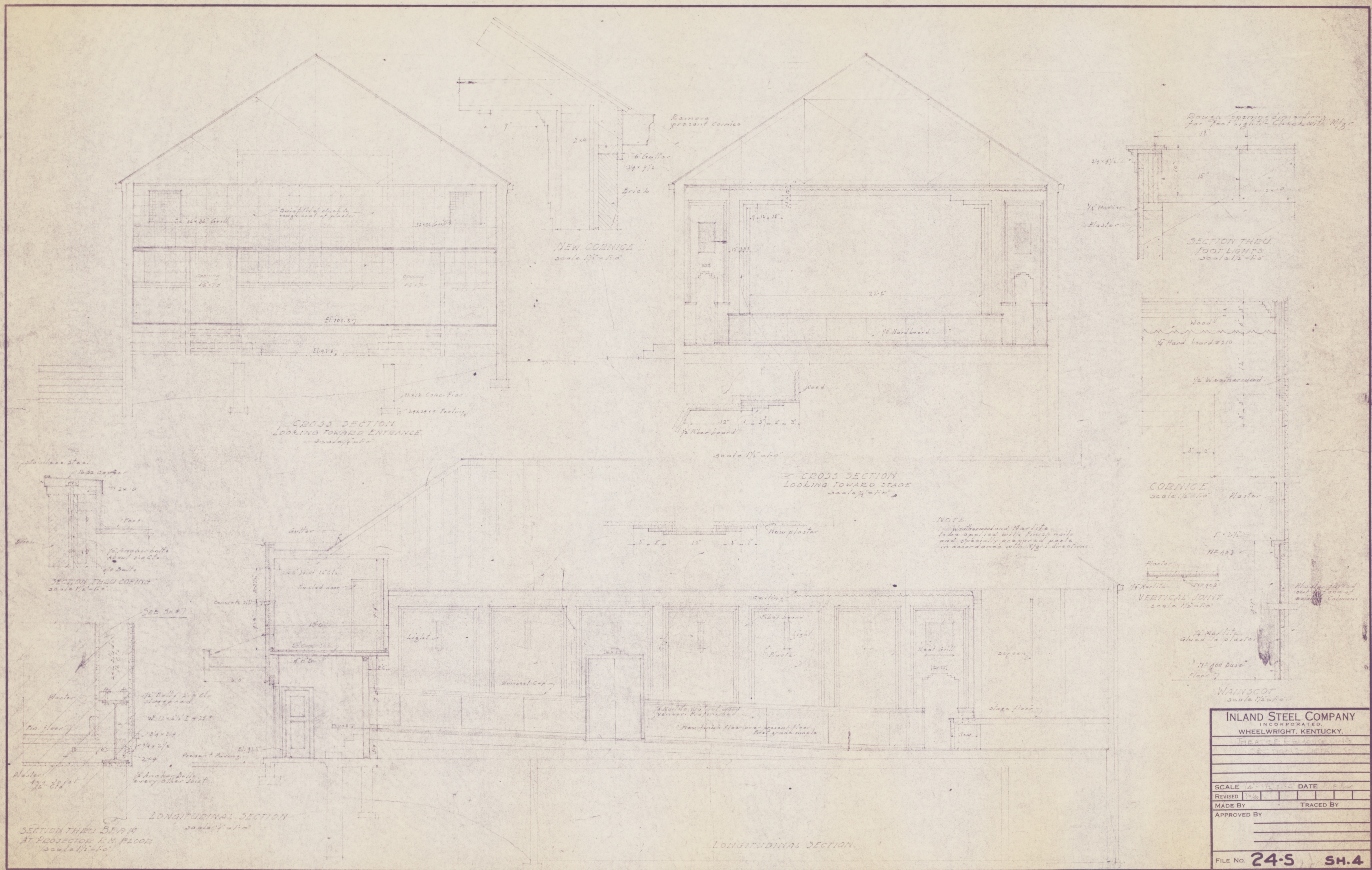
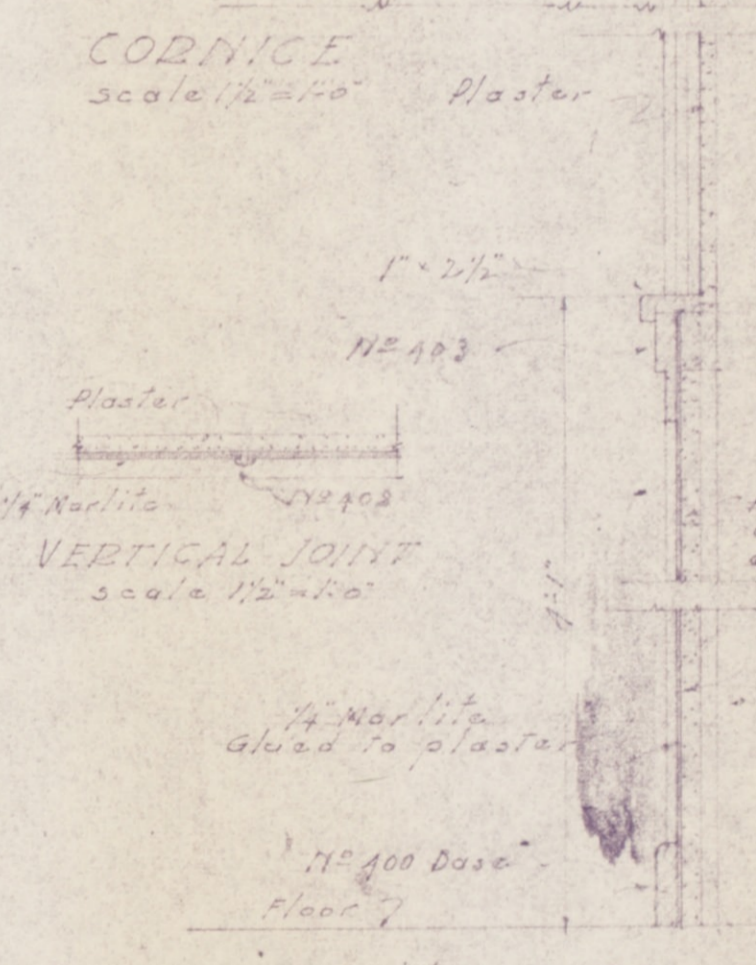
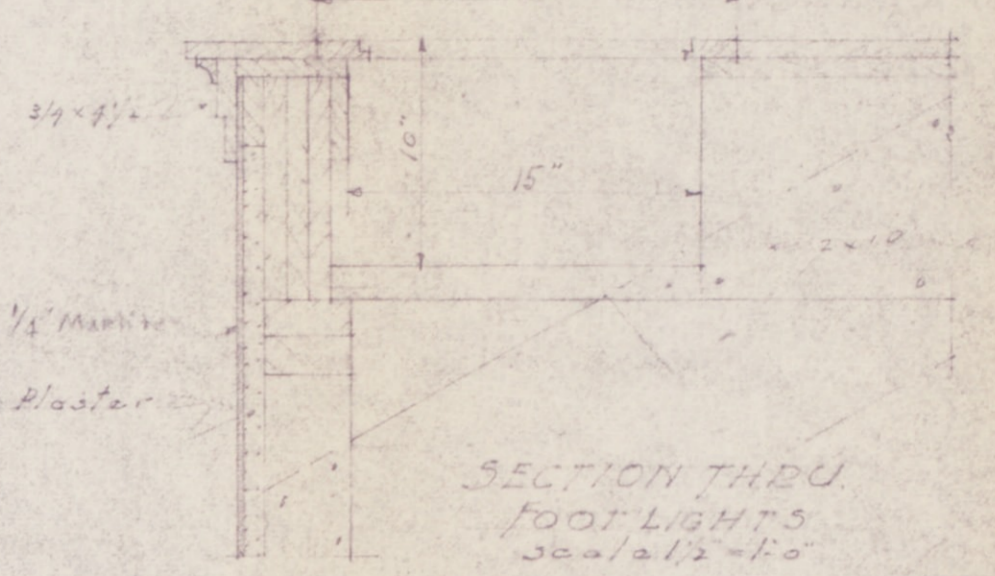


24-S



Lower opening dimensions for foot lights check with Mfg



NOTE: Plaster and Marlite to be applied with finish nails and specially prepared paste in accordance with Mfg's directions

INLAND STEEL COMPANY INCORPORATED WHEELWRIGHT, KENTUCKY.	
THEATRE BUILDINGS	
SCALE 1/4"=1'-0"	DATE
REVISED 7/24	
MADE BY	TRACED BY
APPROVED BY	
FILE NO. 24-S	SH.4

8846 Wheelwright Collection
Blueprints: 29, Inland Steel

24-S

24-S