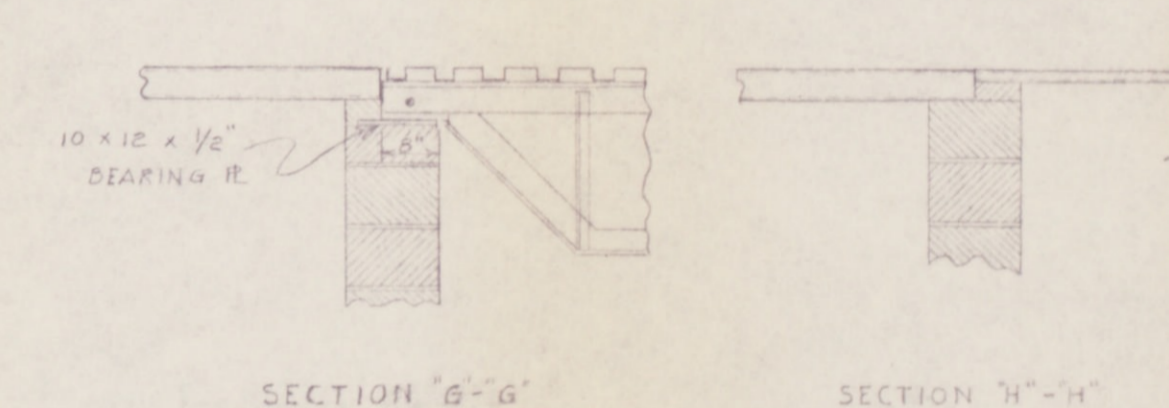
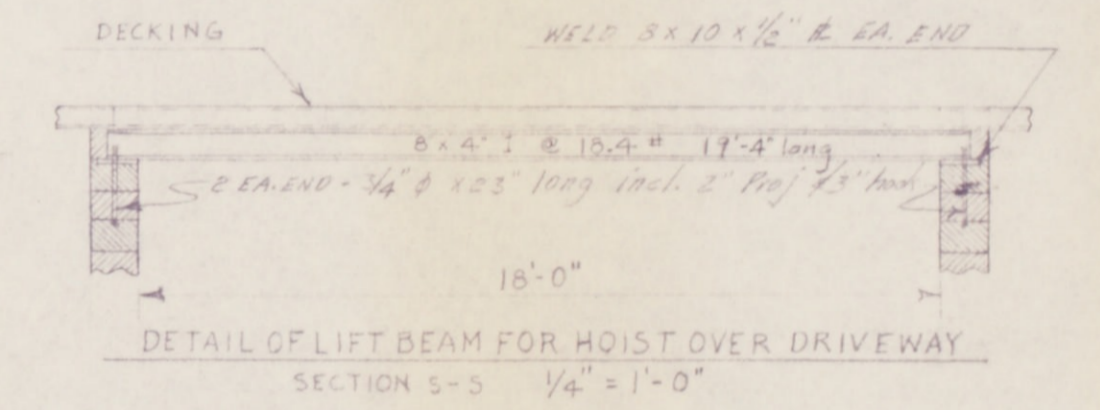
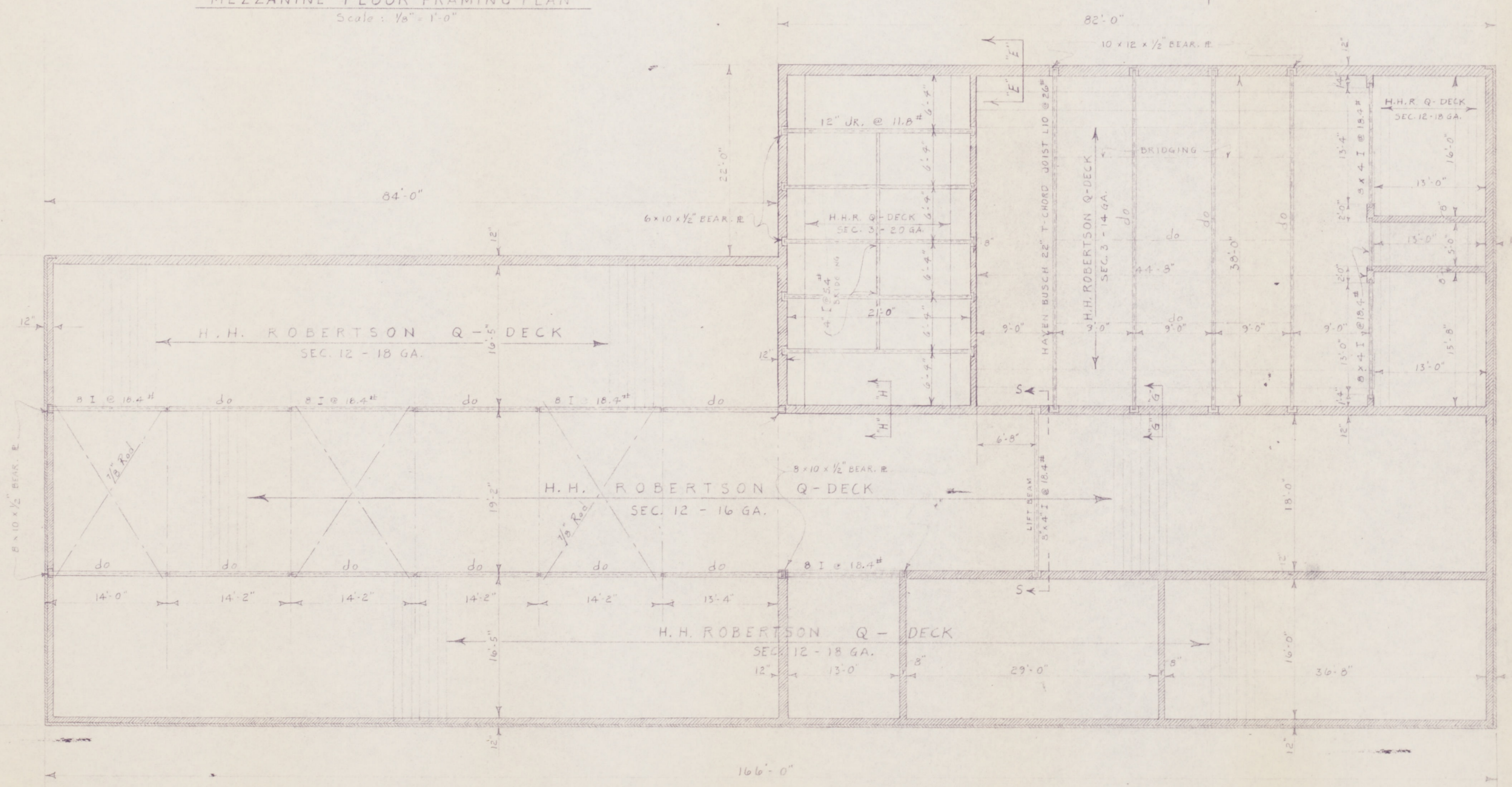
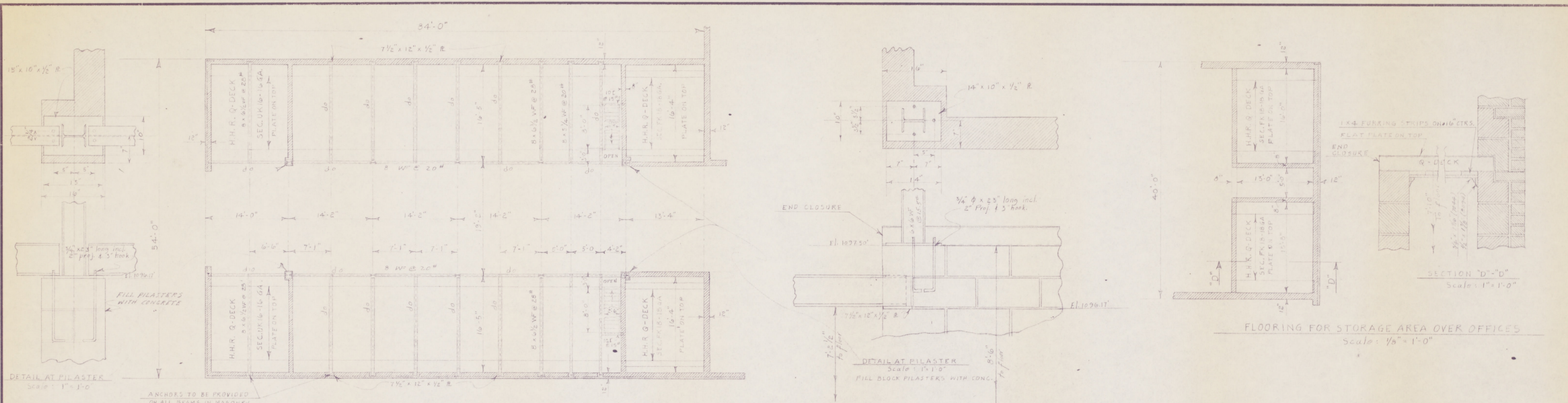


CARPENTER SHOP BUILDING 7/16/17



**NOTE:**  
FILL CORES OF BLOCKS IN TOP TWO COURSES WITH CONCRETE UNDER POINTS OF CONCENTRATED LOAD.

<b>INLAND STEEL COMPANY</b> INCORPORATED WHEELWRIGHT, KENTUCKY CARPENTER SHOP BUILDING	
SCALE AS SHOWN	DATE 7/20/17
REVISED	
MADE BY B.B.	TRACED BY
APPROVED BY	
FILE NO. 41-4	

7846 Wheelwright Collection SHEET No 6 OF 11  
Blueprints: 39, Inland Steel