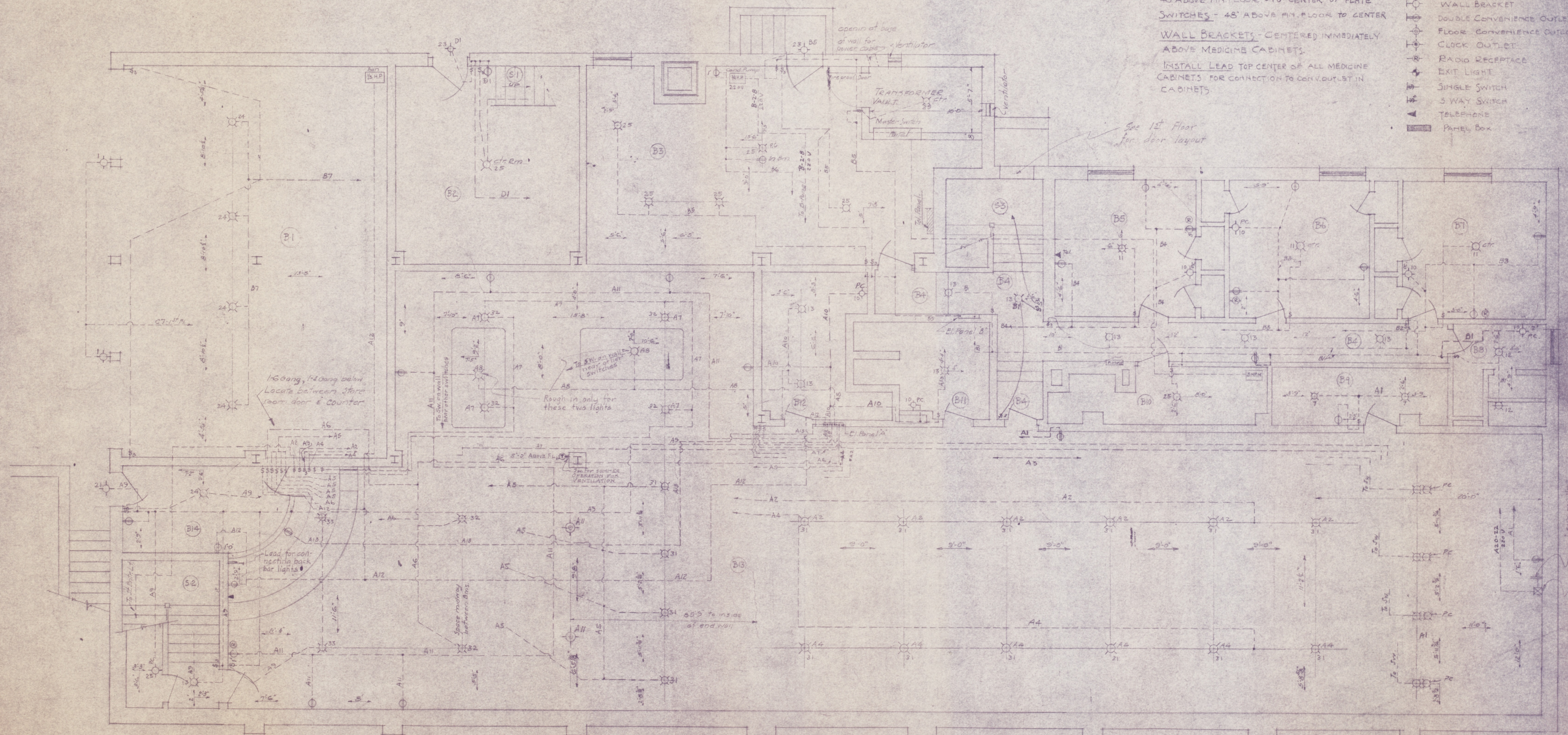


GENERAL NOTES

CONV. OUTLETS 15" ABOVE FIN FLOOR
 EXCEPT OTHERWISE NOTED, I.E. 10" MEANS
 48" ABOVE FIN FLOOR - TO CENTER OF PLATE
 SWITCHES - 48" ABOVE FIN FLOOR TO CENTER
 WALL BRACKETS - CENTERED IMMEDIATELY
 ABOVE MEDICINE CABINETS.
 INSTALL LEAD TOP CENTER OF ALL MEDICINE
 CABINETS FOR CONNECTION TO CONV. OUTLET IN
 CABINETS.

KEY TO ELECTRICAL SYMBOLS

- CEILING OUTLET
- PC PULL CHAIN
- WALL BRACKET
- DOUBLE CONVENIENCE OUTLET
- FLOOR CONVENIENCE OUTLET
- CLOCK OUTLET
- RADIO RECEPTACLE
- EXIT LIGHT
- SINGLE SWITCH
- 3 WAY SWITCH
- TELEPHONE
- PANEL BOX



ELECTRIC WIRING DIAGRAM
 BASEMENT FLOOR

SCALE 1/4" = 1'-0"

REVISED 5/1/41 3/12/41 5/14/41

FILE No. 27-G

7846 Wheelwright Station
 Blueprints: 55, Inland Steel