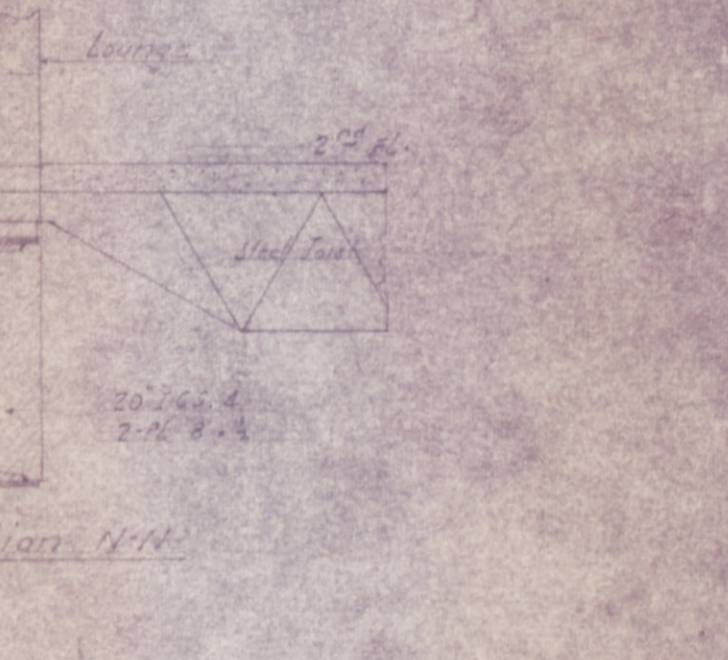
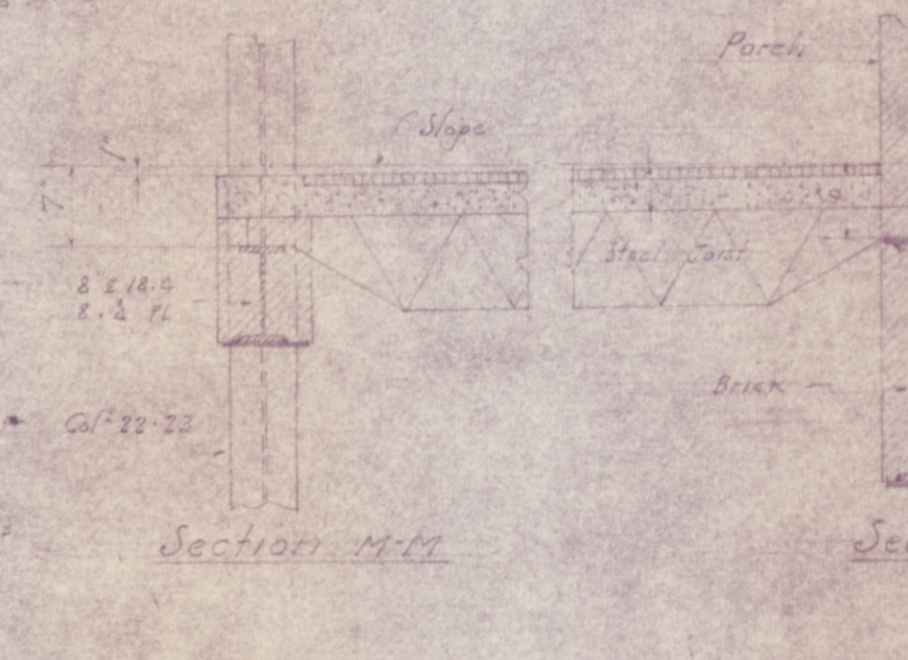
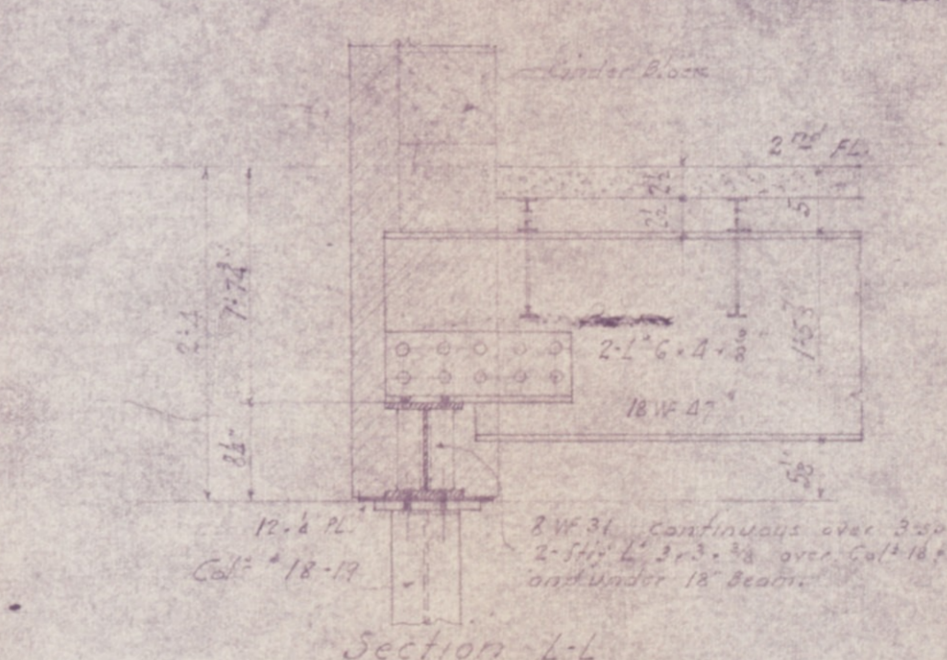
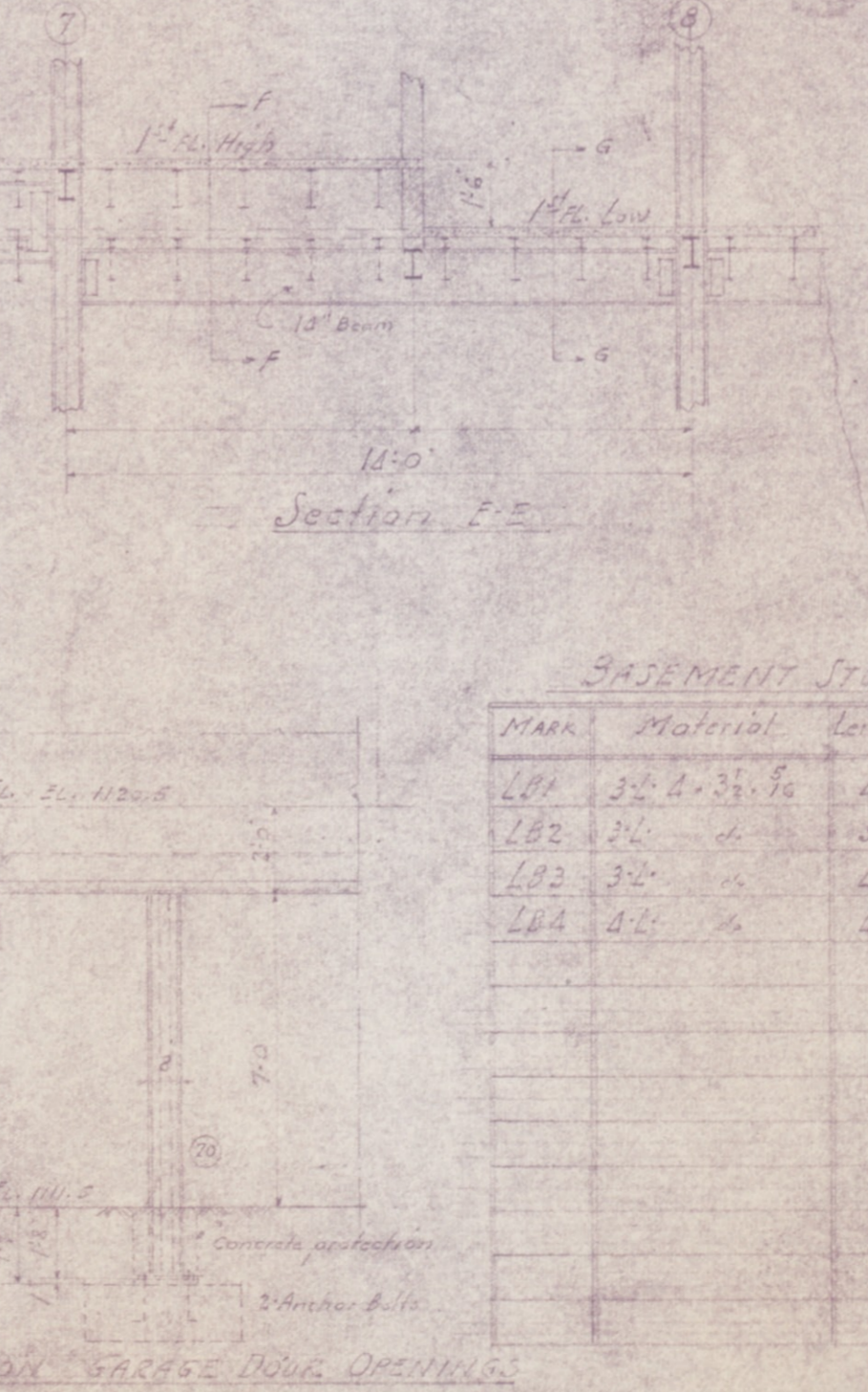
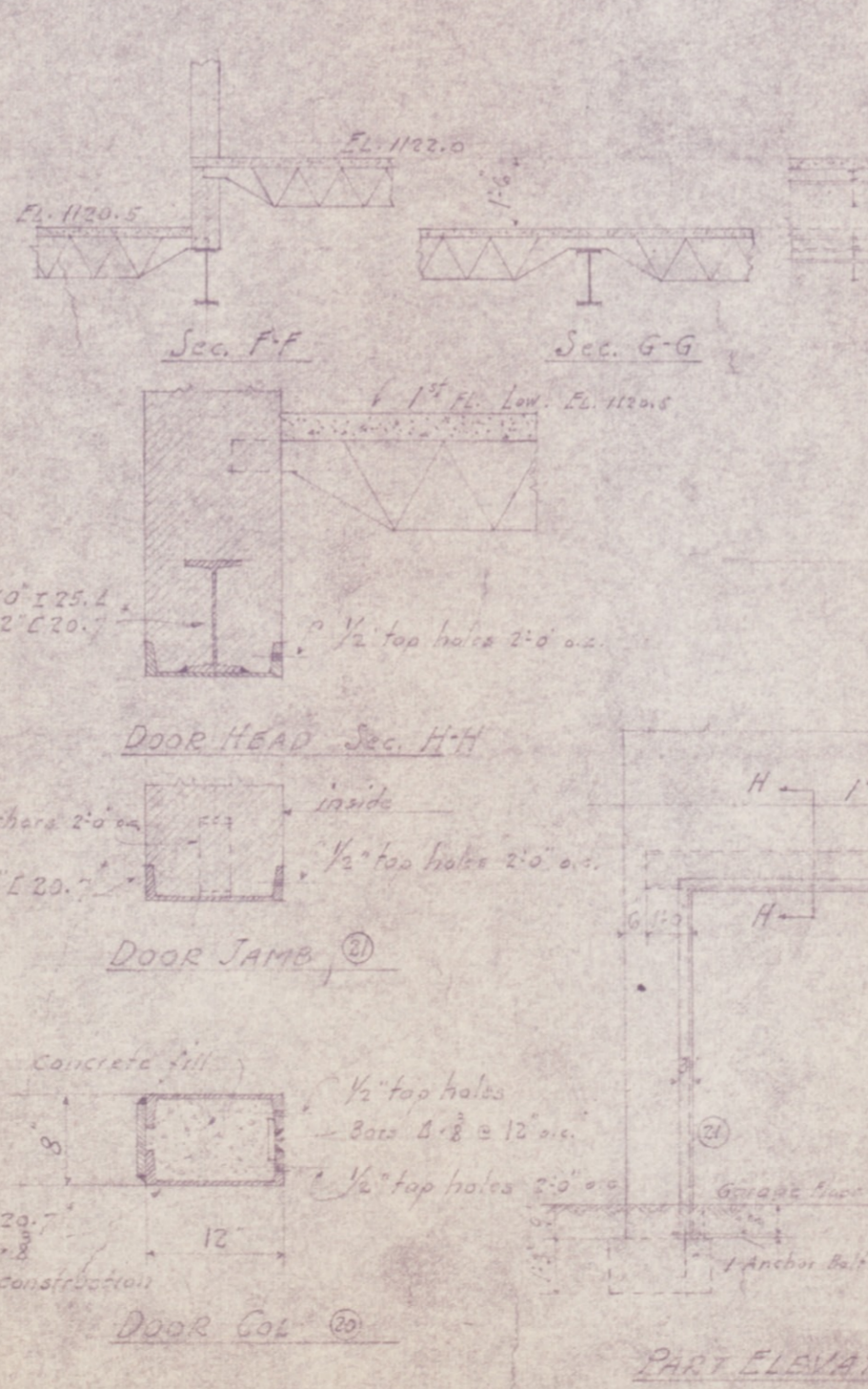
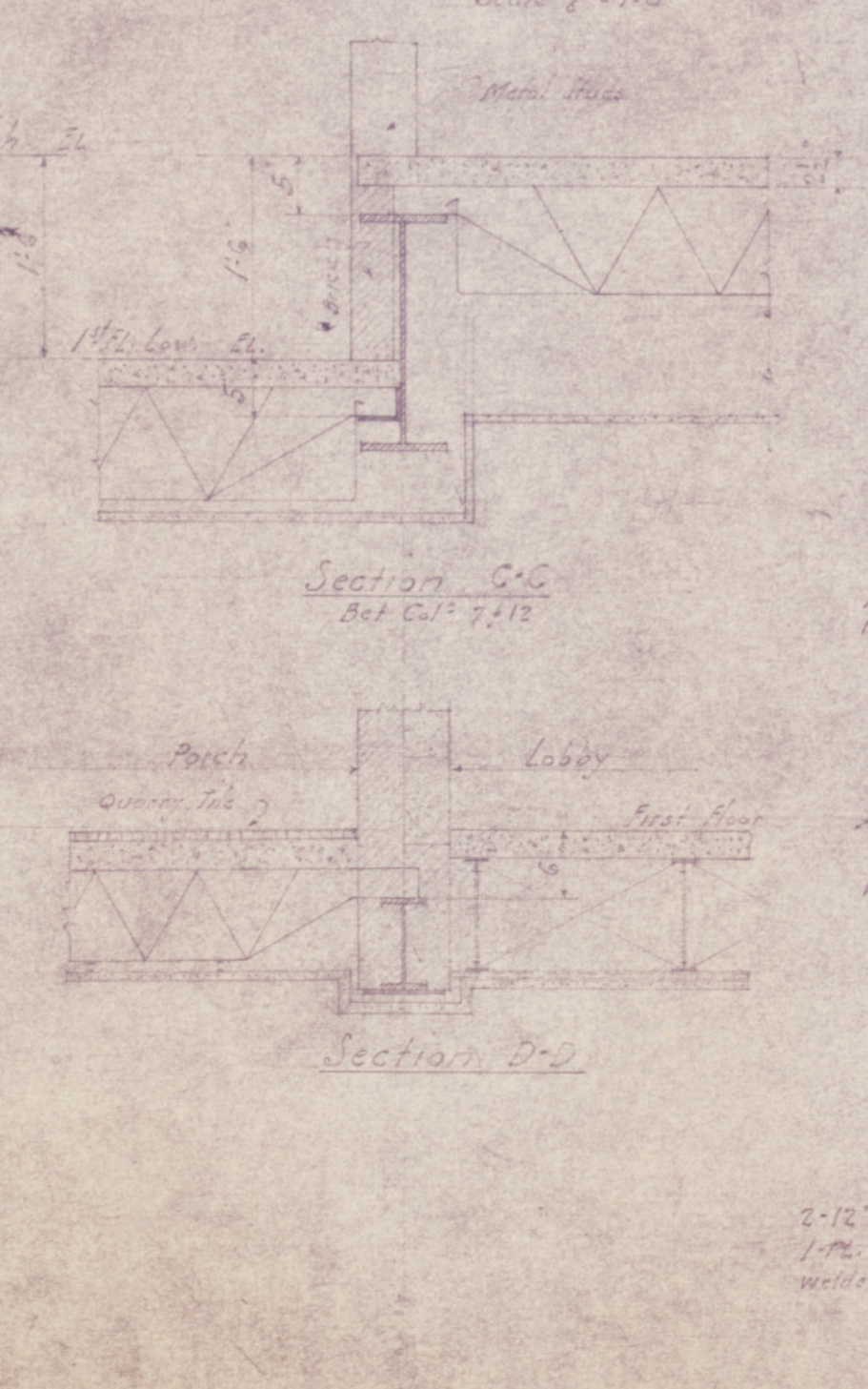
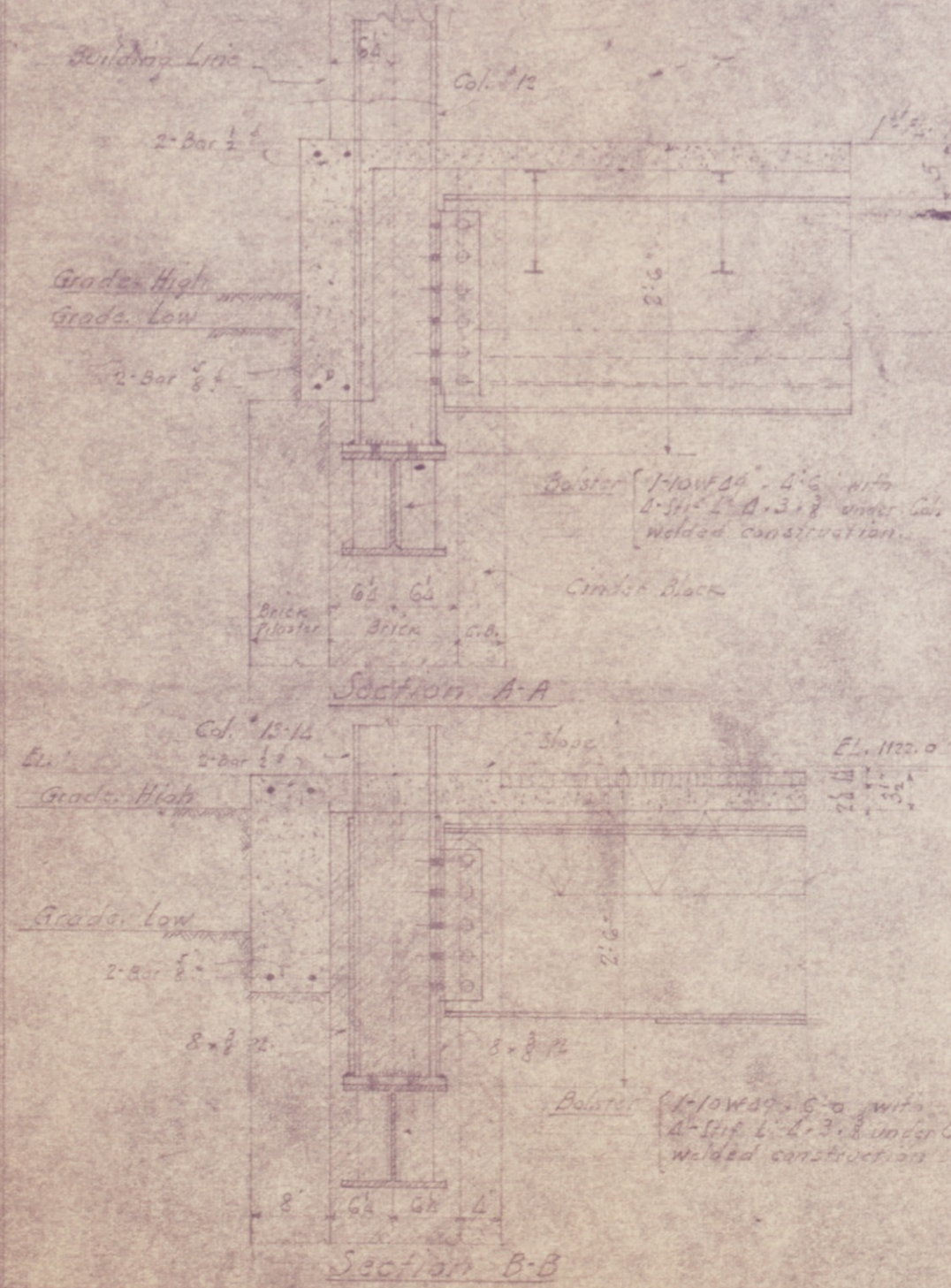


FIRST FLOOR FRAMING PLAN

SECOND FLOOR FRAMING PLAN



BASEMENT STORY LINTELS

MARK	Material	Length	Section
L81	3" x 8" x 3/8"	4' 4"	LL No. 14
L82	3" x 8" x 3/8"	5' 0"	LL No. 15
L83	3" x 8" x 3/8"	4' 0"	LL No. 16
L84	3" x 8" x 3/8"	4' 3"	LL No. 17

FIRST STORY LINTELS

MARK	Material	Length	Section
L101	3" x 8" x 3/8"	4' 8"	LL No. 18
L102	3" x 8" x 3/8"	4' 4"	LL No. 19
L103	3" x 8" x 3/8"	4' 4"	LL No. 20
L104	3" x 8" x 3/8"	9' 0"	LL No. 21
L105	3" x 8" x 3/8"	10' 0"	LL No. 22
L106	3" x 8" x 3/8"	17' 0"	LL No. 23
L107	3" x 8" x 3/8"	9' 4"	LL No. 24
L108	3" x 8" x 3/8"	9' 0"	LL No. 25
L109	3" x 8" x 3/8"	4' 2"	LL No. 26

DATE 1941
 A CLUB HOUSE
 FOR
 INLAND STEEL COMPANY
 WHEELWRIGHT, WY.
 SHEET 51
 FILE No. 27-G

88MG Wheelwright Co. Inc.
 Blueprints 59, Inland Steel