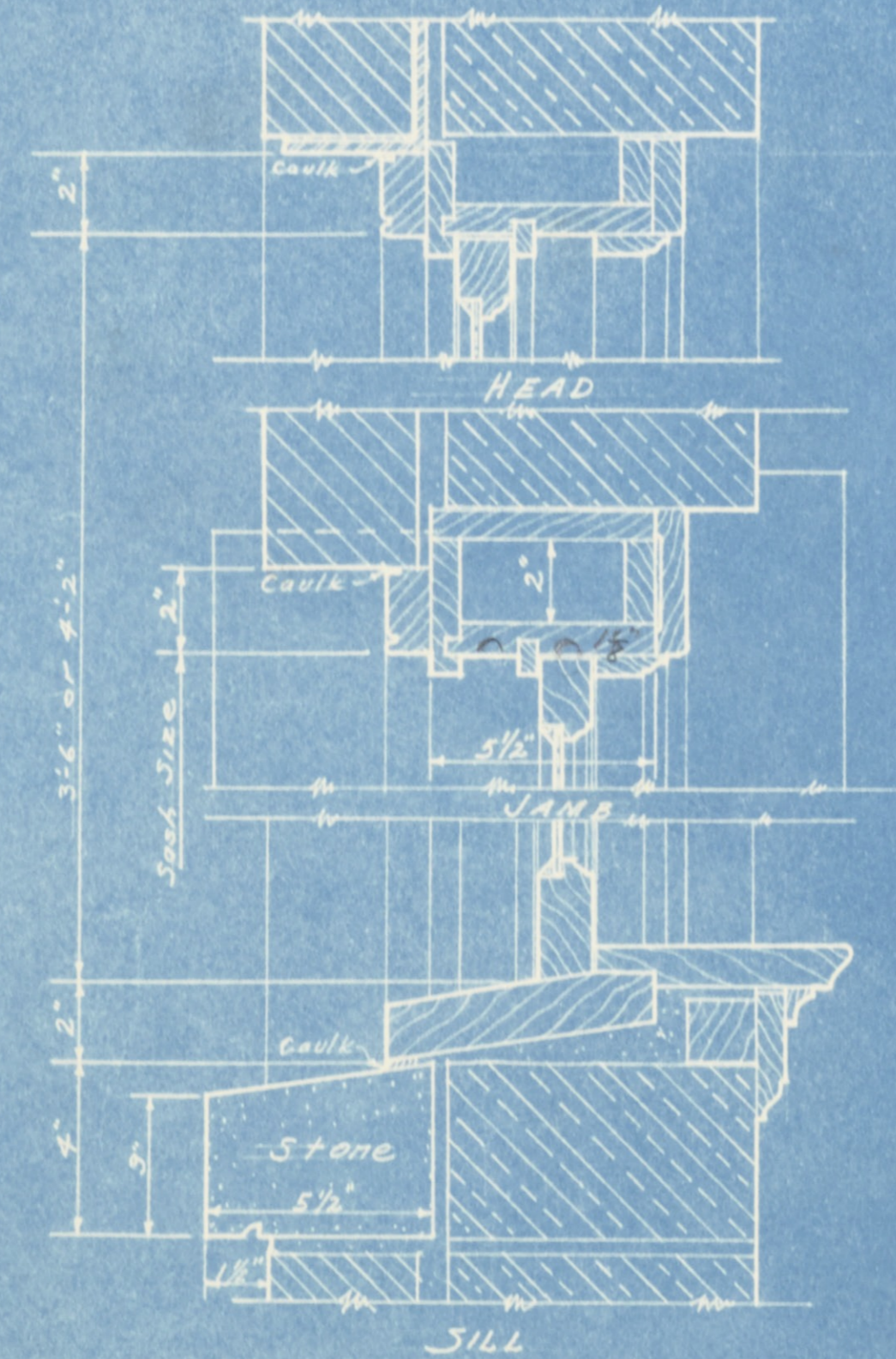
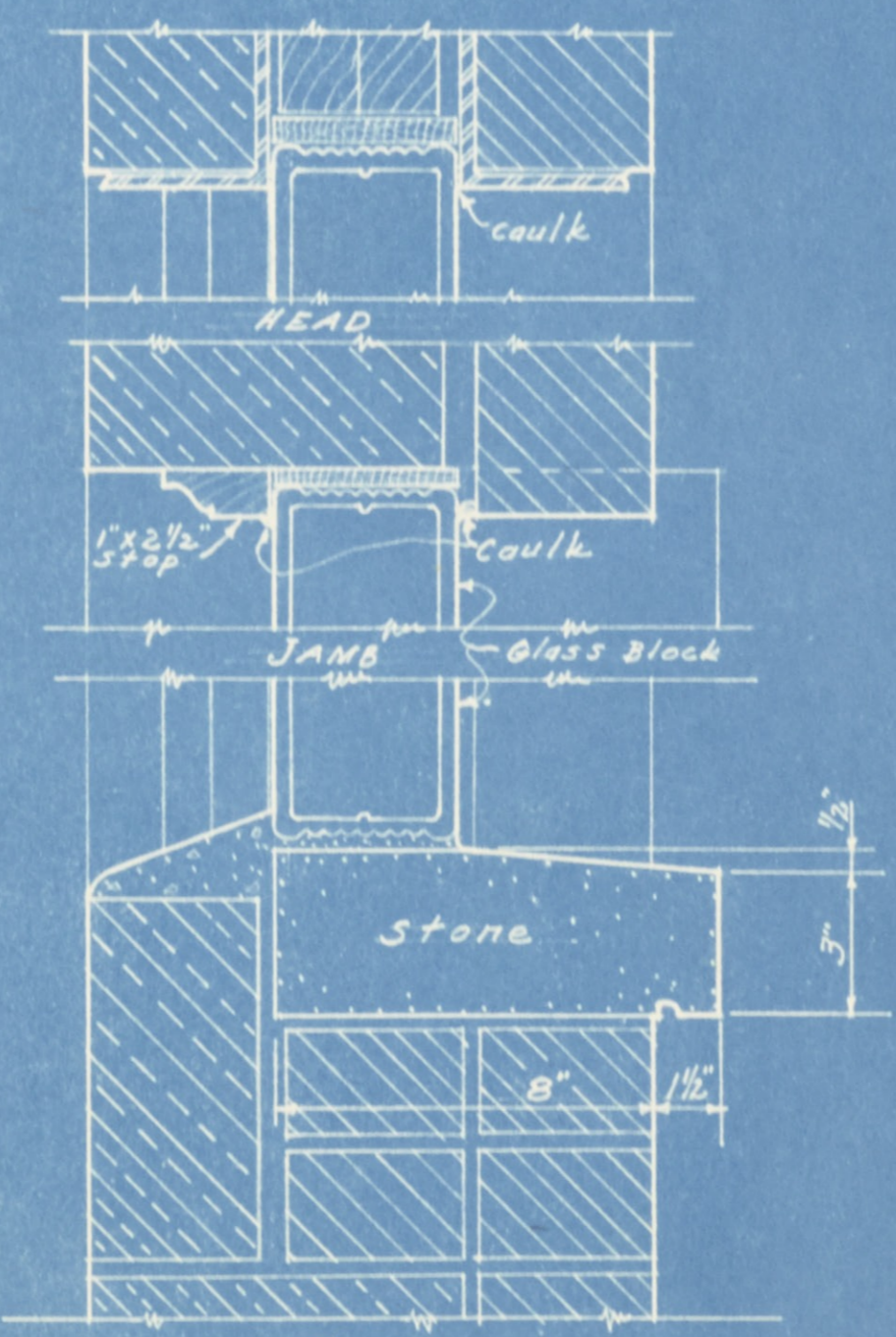


FOUNDATION PLAN
Scale $\frac{1}{4}'' = 1'-0''$

NOTES-
All concrete slabs to be reinforced with 6"x6" No. 8 Wire Fabric.
Elevations are to top of footings.



WINDOW DETAIL
Scale $3'' = 1'-0''$



GLASS BLOCK WINDOWS
Scale $3'' = 1'-0''$

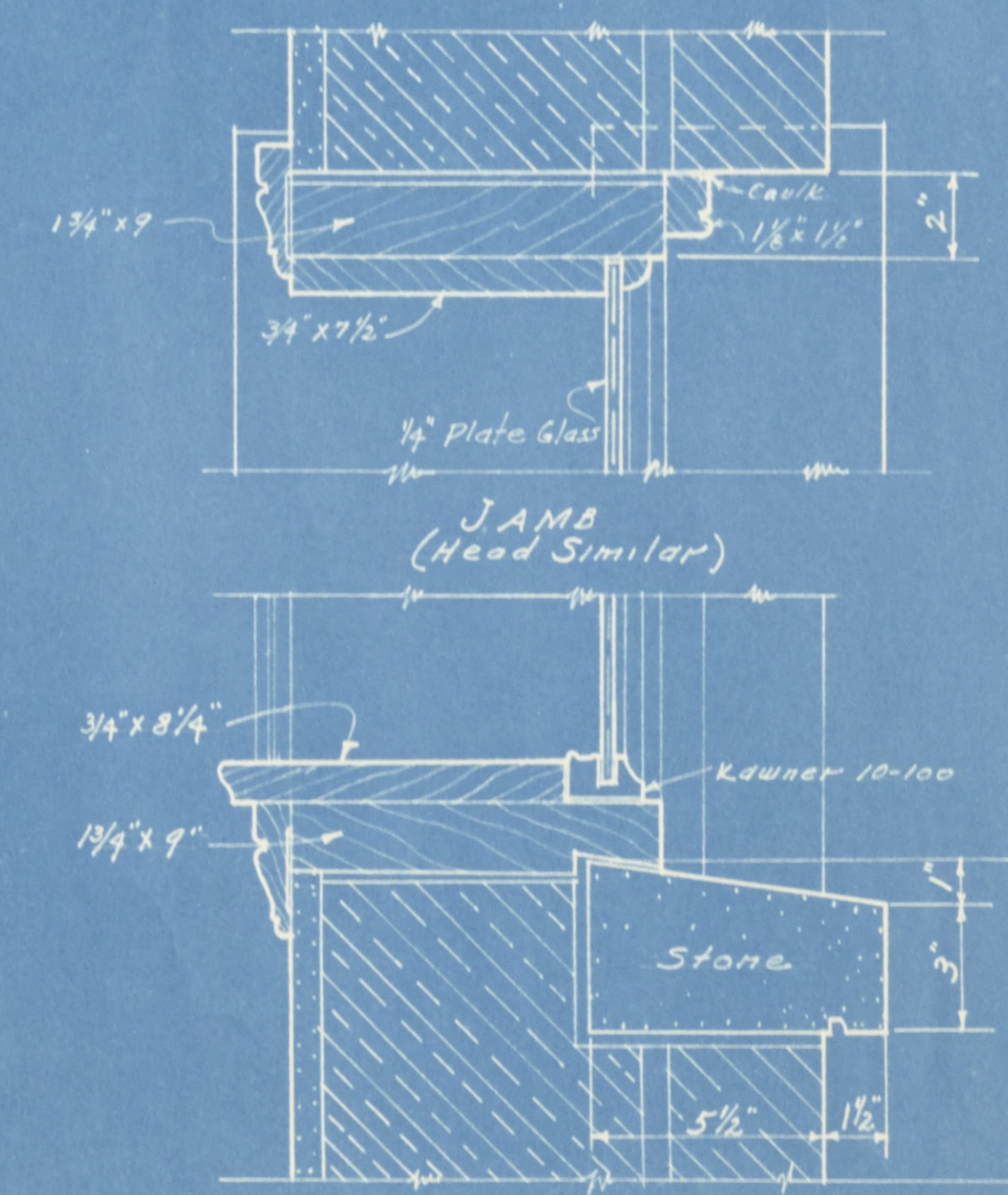
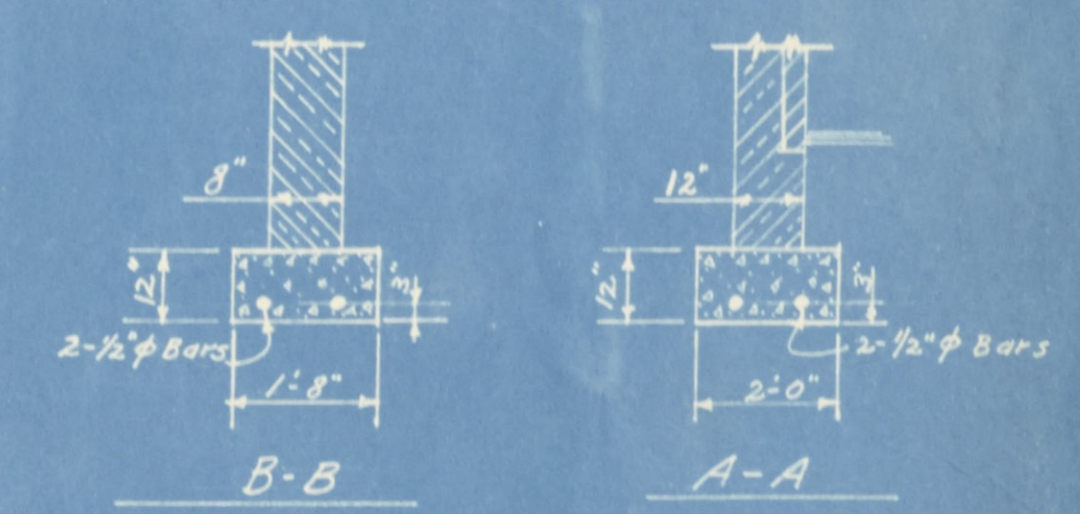


PLATE GLASS WINDOWS
Scale $3'' = 1'-0''$



WALL FOOTINGS DETAILS
Scale $3/8'' = 1'-0''$

INLAND STEEL COMPANY
INCORPORATED.
WHEELWRIGHT, KENTUCKY.
MERCHANDISE DEPARTMENT
WAREHOUSE

SCALE As shown	DATE 8-4-52
REVISED	MADE BY
APPROVED BY	TRACED BY

FILE NO.