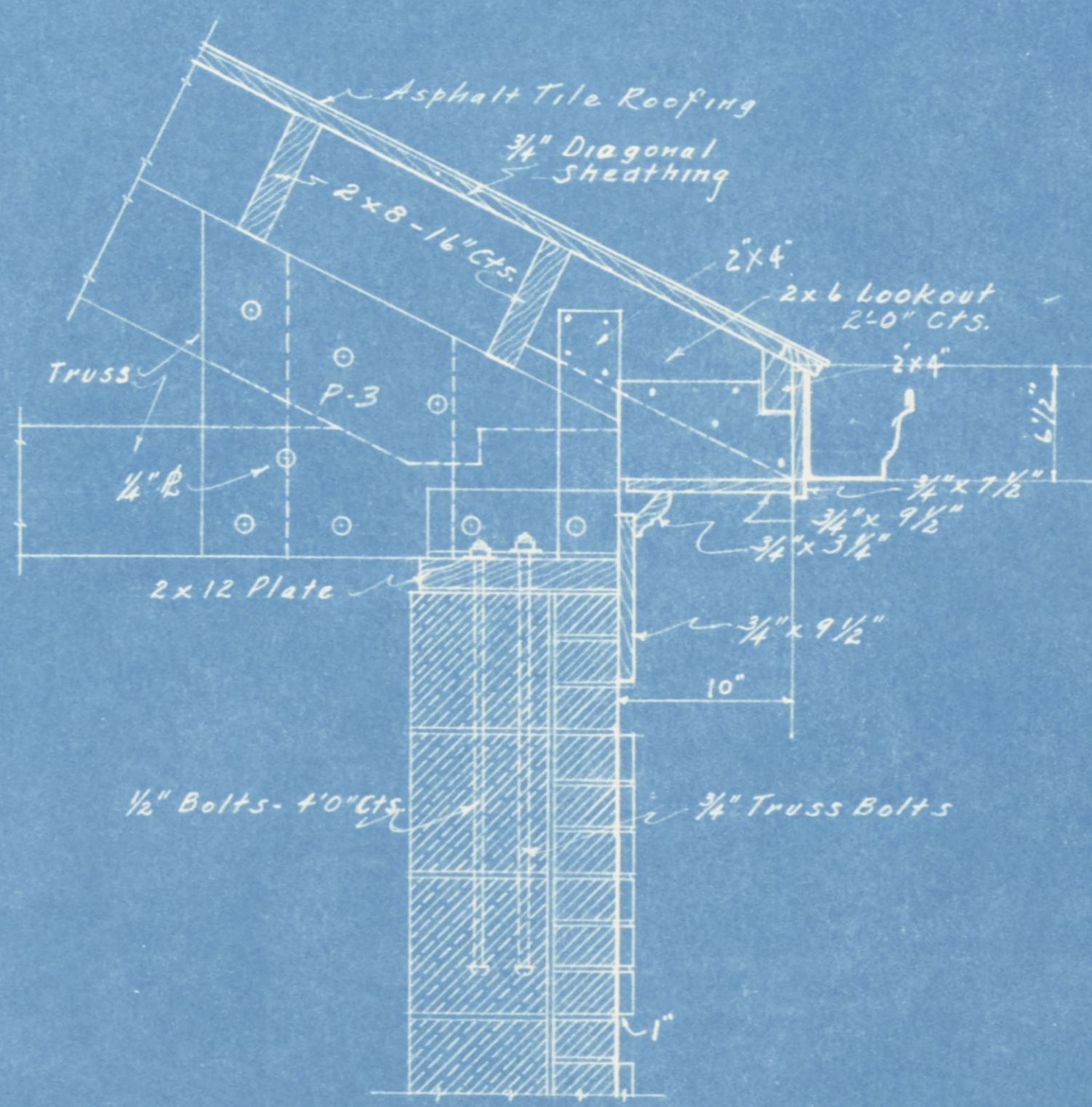
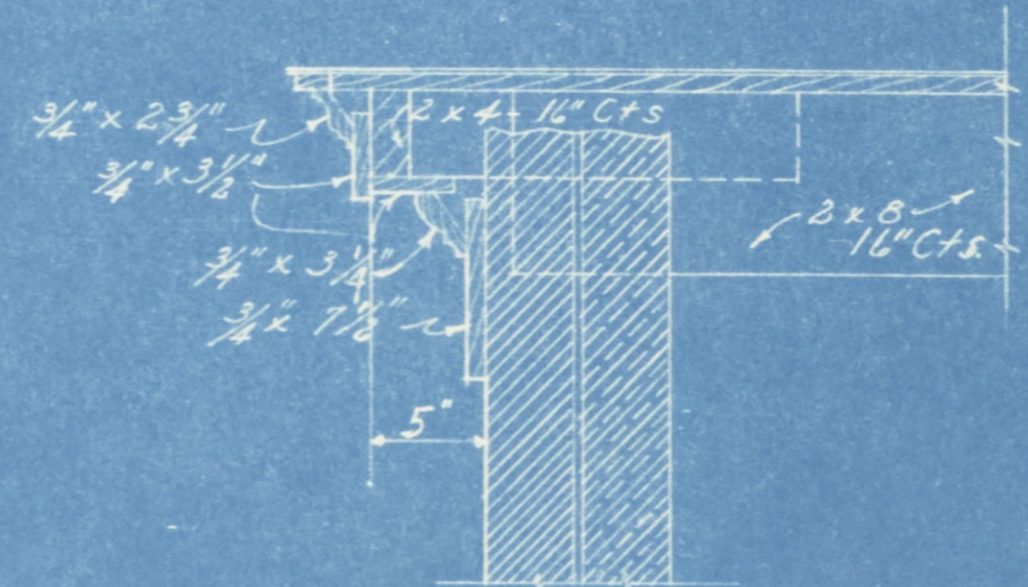


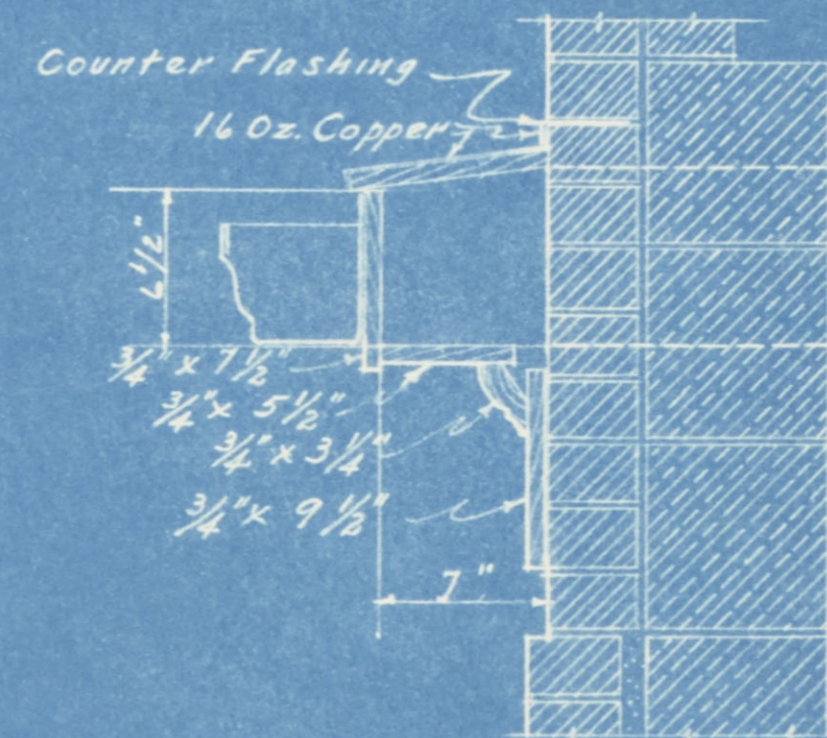
SECTION ON LINE X-X
Scale 1/4" = 1'-0"



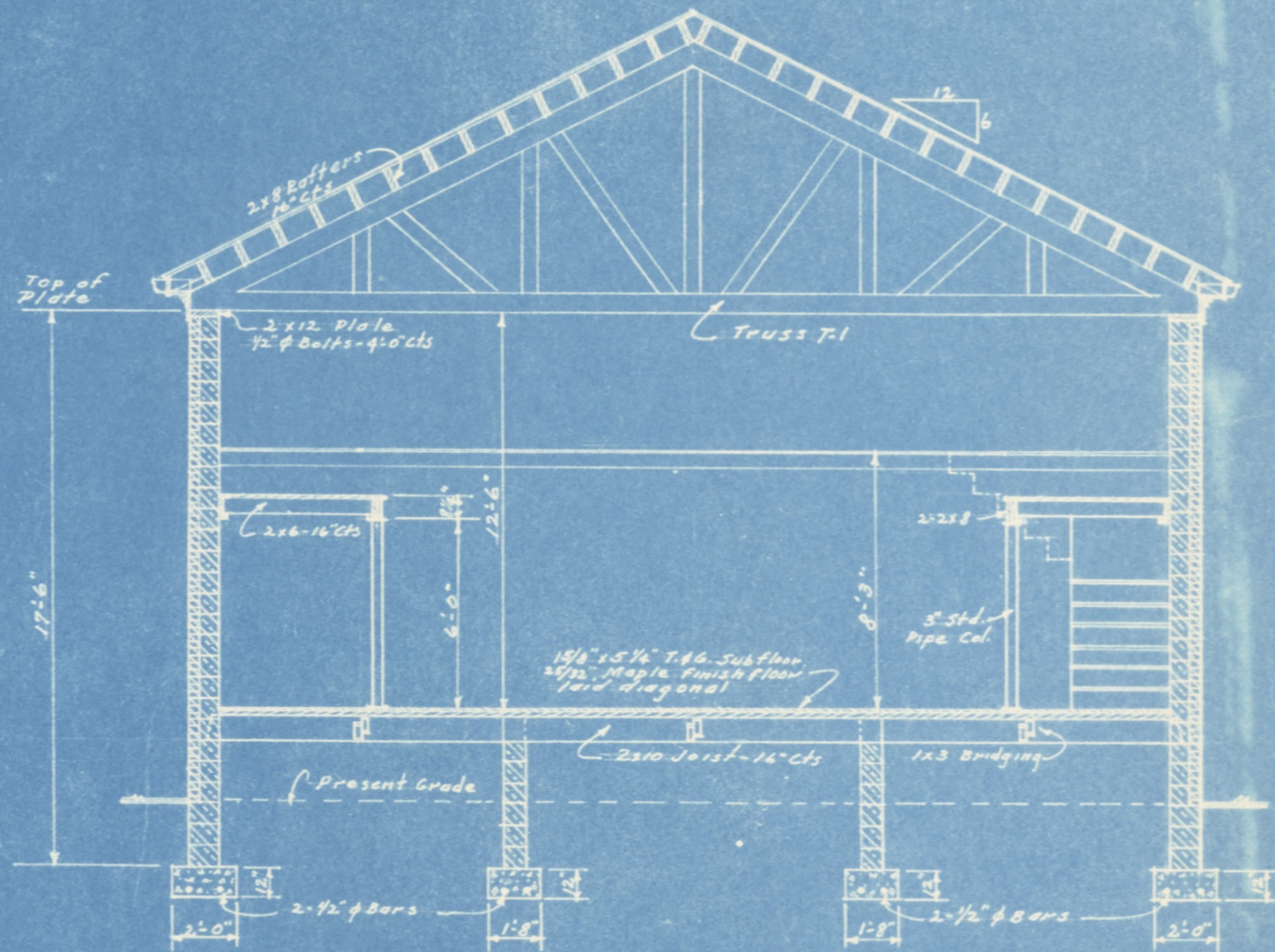
TYPICAL EAVE CORNICE
Scale 1/2" = 1'-0"



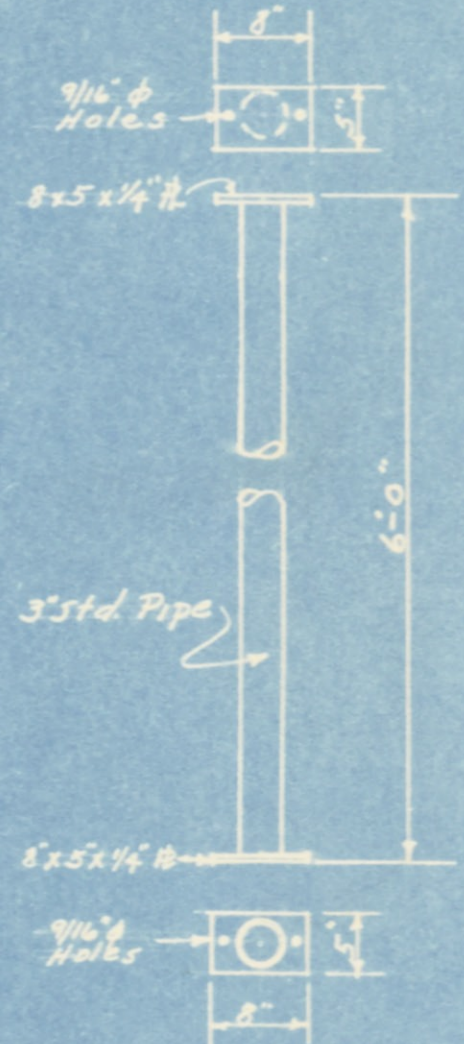
TYPICAL GABLE CORNICE
Scale 1/2" = 1'-0"



TYPICAL CORNICE RETURN
Scale 1/2" = 1'-0"



SECTION ON LINE Y-Y
Scale 1/4" = 1'-0"



PIPE COLUMN DETAIL
Scale 3/4" = 1'-0"

INLAND STEEL COMPANY
INCORPORATED
WHEELWRIGHT, KENTUCKY
MERCHANDISE DEPARTMENT
WAREHOUSE

SCALE As shown	DATE 8-1-52
REVISED	
MADE BY	TRACED BY
APPROVED BY	