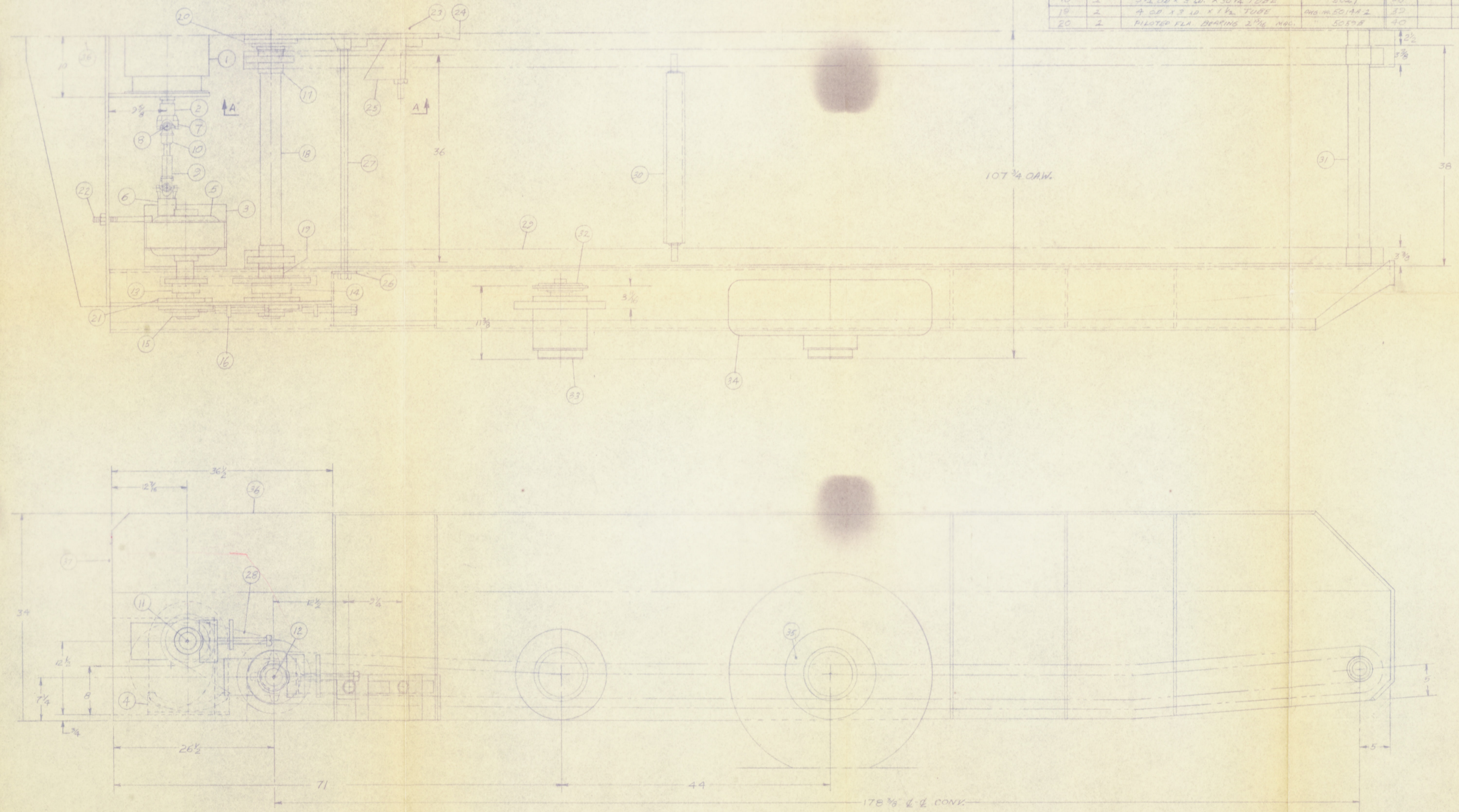


BILL OF MATERIAL				BILL OF MATERIAL			
ITEM	QTY	DESCRIPTION	REFERENCE	ITEM	QTY	DESCRIPTION	REFERENCE
1	1	P1036-128 MOTOR	KERSKY	21	4	3/4" x 3/32" x 6 3/8"	5011A
2	2	2 3/4" OD x 1 7/8" ID x 2 3/8"	DWG. M-5079A	22	2	REDUC. ADJ. BOLT	5079A
3	2	2 1/2" x 10" x 1 3/4"	" 5079A	23	1	1/4" x 1 1/2" x 32	5158-3
4	4	1/2" x 3 3/16" x 1 9/2"	" 5079A	24	1	3/4" x 1 1/2" x 32	5158-3
5	2	SPEED REDUCERS 7 1/2" SIZE	" 5079A	25	2	DRYED WEDGE	51148-2
6	2	3 00" x 1 1/8" ID x 2 1 3/8"	" 5079A	26	2	3/4" x 1"	5118A
7	4	SPWINDS KOTE	M-2-4-1551	27	2	1 1/4" x 5 1/2"	5118-2
8	4	CROSS & BEARINGS	" 5-121X	28	2	NO. 190 DRIVE CHAIN 5 7/8"	5027
9	2	YOKES & SPINDLE SLEEVE	" 2-3-128X	29	4	2-607 H. CONK. CHAIN 3 7/8" x 3 1/2"	5061
10	2	DRIVE SHAFT 3 3" TUBE	DWG. M-5079A-3	30	24	36" FORMER BOX FLIGHT	5063B-3
11	2	2 3/8" x 1 1/8" x 1/4" CRS.	" 5079A	31	1	3 1/2" OD x 3 1/2" x 8 1/2" TUBE	5022
12	2	2 3/8" x 1 1/8" x 1/4" CRS.	" 5079A	32	4	SPINDLES	K-16
13	2	DRIVE SPROCKET 1 3/4" P. 24-11	" 5079A	33	4	HUB ASSEM.	K-16
14	2	DRIVE SPROCKET 1 3/4" P. 24-11	" 5079A	34	4	TIRES	B-25 V15
15	4	PILDED FLA. BEARING 2 1/8"	5050	35	4	RIMS	5055
16	4	BEARING ADJ. ASSEM.	DWG. M-5079B	36	1	PIN KEEPER	DWG. M-5179C
17	4	CONK. SPRO. 2 5/8" P.	" 5079B	37	1	1/8" x 2 3/4" x 2 3/4"	" 5148A
18	2	3 1/2" OD x 3 1/2" x 30 1/2" TUBE	5021	38			
19	2	4 OD x 3 ID x 1 1/2" TUBE	DWG. M-5014A-2	39			
20	2	PILDED FLA. BEARING 2 1/8" NO.	5050A	40			



28MG Wheelright Gleason  
Blueprints: 144, Island Creek  
Orig. cars

NO.	DATE	REVISION
1	3-9-57	
DRAWN BY: JMC		
CHK'D: [Signature]		
MATERIAL: [Blank]		
DATE: 3-9-57		
SCALE: 1/2"=1"		
EST. WT.: [Blank]		
MACHINERY ASSEMBLY		
CHAIN CAR MODEL PD. 5015-37		
COAL SHOV		
SHEET NO. 1 OF 1		DRAWING NO. 57310
KERSEY MFG. CO., INC. BLUEFIELD, VIRGINIA		