



650
(3 SHEETS)

© D F 29355

JUL 24 1915

INDEX

| SPECIALS | NUMBER | DESCRIPTION | NUMBER | DESCRIPTION |
|----------|--------|---------------------------------|--------|-------------------------------|
| A | 3 | A. M. E. Church | K | Kentucky Female Orphan School |
| B | 3 | Baptist Church (Negro) | L | L. & N. R. R. Depot |
| C | 3 | Christian Church | M | McKinney & Co. Coal Yard |
| D | 1 | City Hotel | P | Midway Graded and High School |
| E | 1 | Jail and Work House | S | Ice and Coal Co. |
| F | 1 | Cogar Co. Tobacco Barn | | |
| G | 1 | Rumley Co. Grain Elevator | | |
| | 2 | Fire Department | | |
| | 2 | Registered Distillery No. 9 | | |
| | 2 | Greenbaum, B. S. J., Distillery | | |
| | 2 | S. R. R. Depot | | |

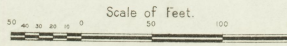
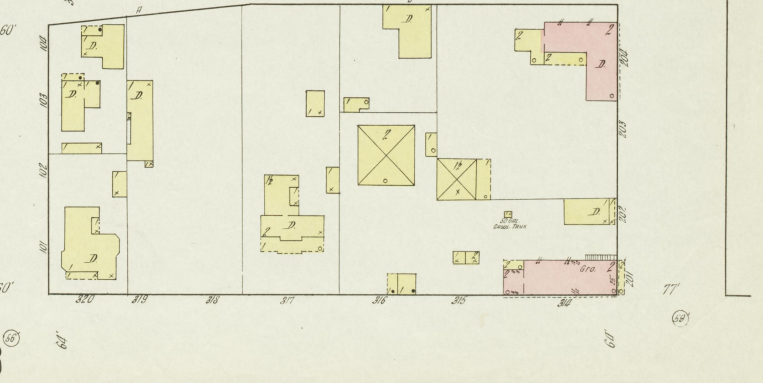
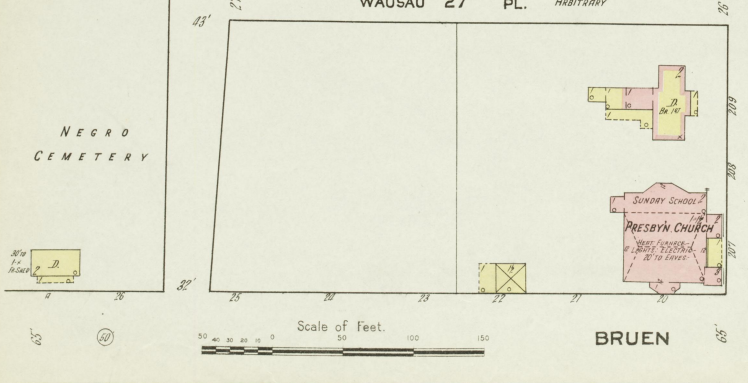
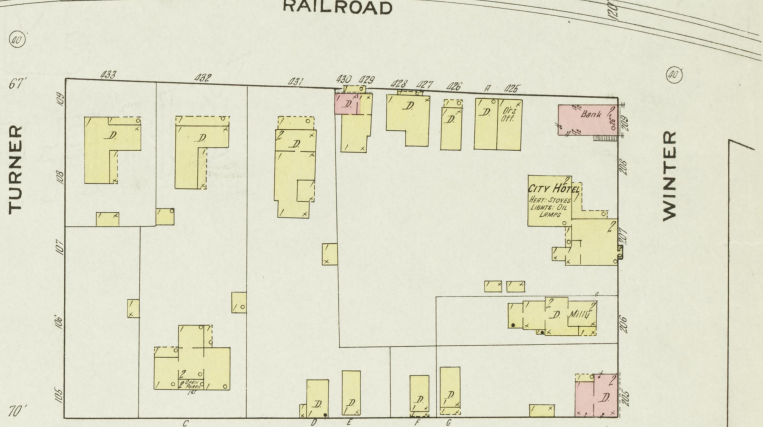
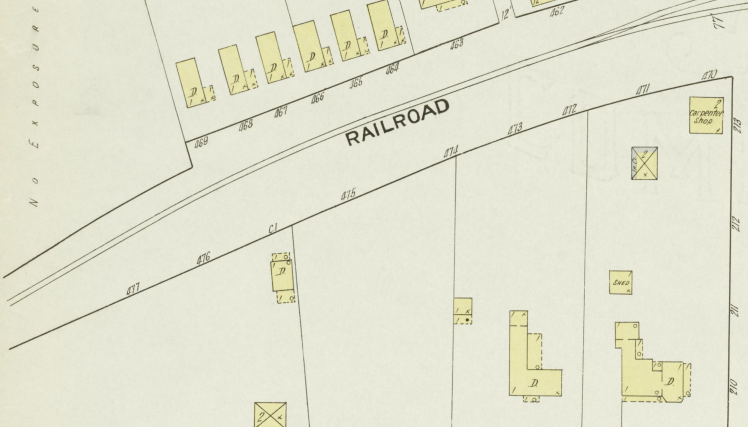
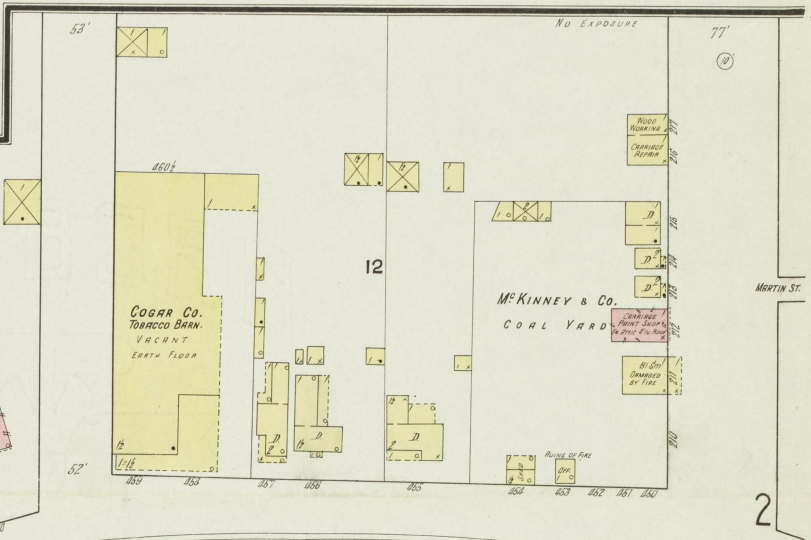
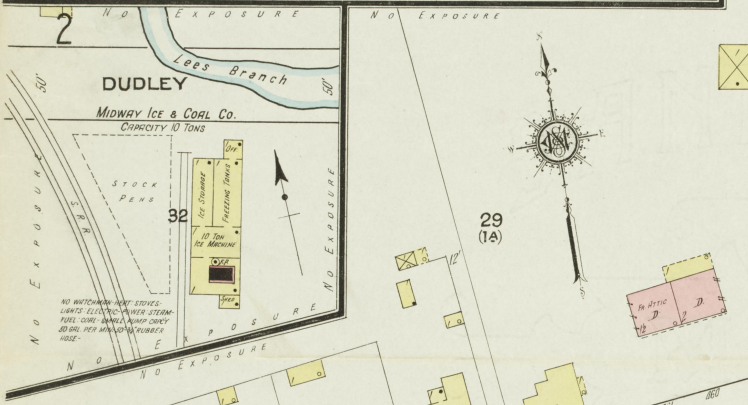
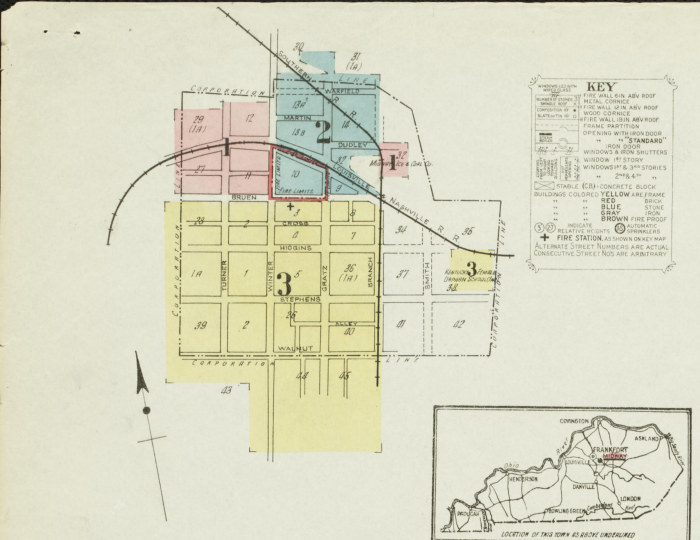
WATER FACILITIES:
Public water and Lees Branch

FIRE DEPT.:
Volunteer Co. 1 Chief and 11 members paid for actual service rendered. 1 Horses. 15 class steam fire engine. 2 wheel horse rakes. 6500 2 1/2 class hose in good condition. Alarm sounded by telephone & bell on Engine No. 1.

Public lights electric. Main St paved, others in good condition. Grades as above.

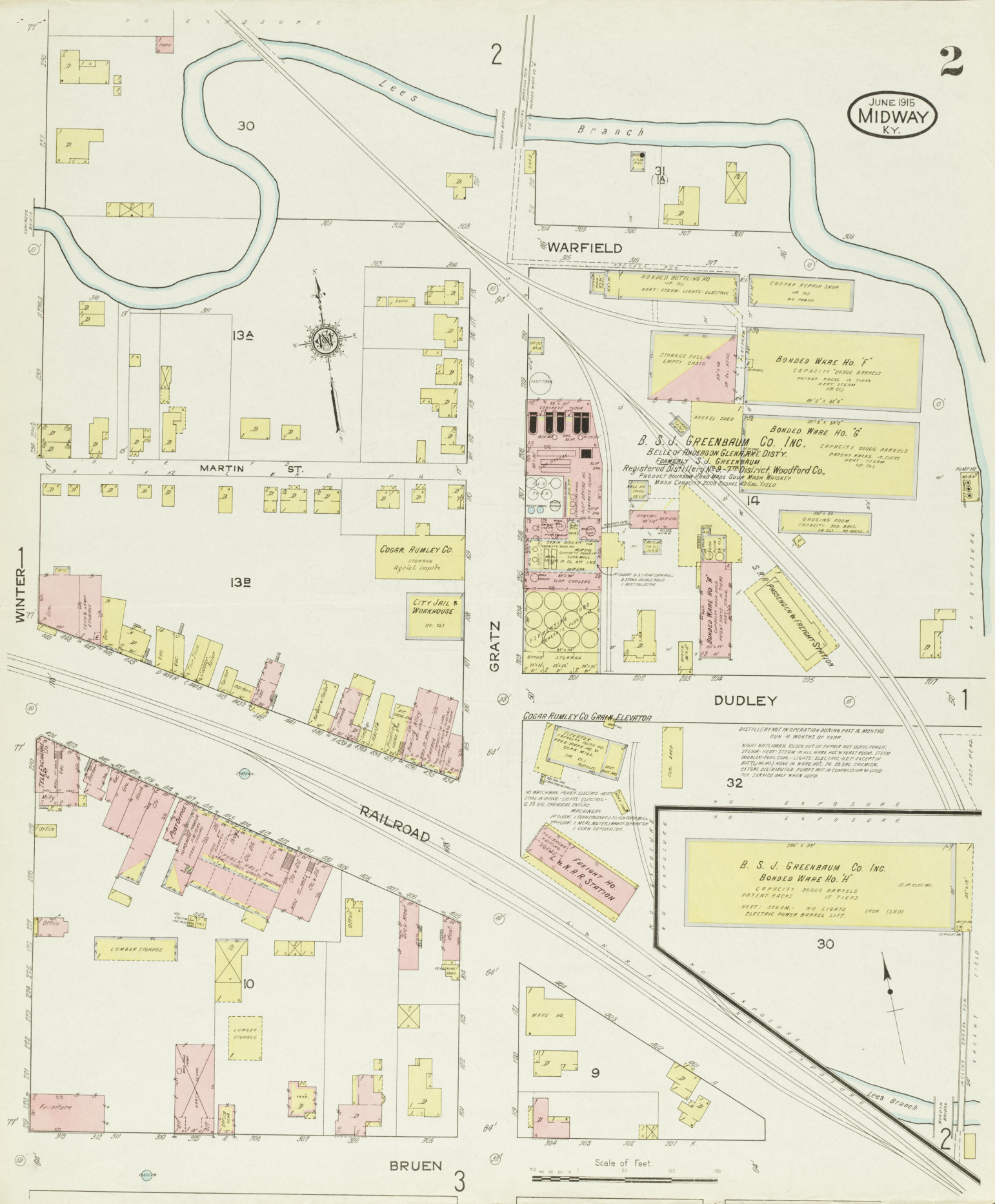
KEY

- 1. FIRE WALL, ASB. ROOF
- 2. FIRE WALL, CONCRETE
- 3. FIRE WALL, BRICK
- 4. FIRE WALL, BRICK
- 5. FIRE WALL, BRICK
- 6. FIRE WALL, BRICK
- 7. FIRE WALL, BRICK
- 8. FIRE WALL, BRICK
- 9. FIRE WALL, BRICK
- 10. FIRE WALL, BRICK
- 11. FIRE WALL, BRICK
- 12. FIRE WALL, BRICK
- 13. FIRE WALL, BRICK
- 14. FIRE WALL, BRICK
- 15. FIRE WALL, BRICK
- 16. FIRE WALL, BRICK
- 17. FIRE WALL, BRICK
- 18. FIRE WALL, BRICK
- 19. FIRE WALL, BRICK
- 20. FIRE WALL, BRICK
- 21. FIRE WALL, BRICK
- 22. FIRE WALL, BRICK
- 23. FIRE WALL, BRICK
- 24. FIRE WALL, BRICK
- 25. FIRE WALL, BRICK
- 26. FIRE WALL, BRICK
- 27. FIRE WALL, BRICK
- 28. FIRE WALL, BRICK
- 29. FIRE WALL, BRICK
- 30. FIRE WALL, BRICK
- 31. FIRE WALL, BRICK
- 32. FIRE WALL, BRICK
- 33. FIRE WALL, BRICK
- 34. FIRE WALL, BRICK
- 35. FIRE WALL, BRICK
- 36. FIRE WALL, BRICK
- 37. FIRE WALL, BRICK
- 38. FIRE WALL, BRICK
- 39. FIRE WALL, BRICK
- 40. FIRE WALL, BRICK
- 41. FIRE WALL, BRICK
- 42. FIRE WALL, BRICK
- 43. FIRE WALL, BRICK
- 44. FIRE WALL, BRICK
- 45. FIRE WALL, BRICK
- 46. FIRE WALL, BRICK
- 47. FIRE WALL, BRICK
- 48. FIRE WALL, BRICK
- 49. FIRE WALL, BRICK
- 50. FIRE WALL, BRICK
- 51. FIRE WALL, BRICK
- 52. FIRE WALL, BRICK
- 53. FIRE WALL, BRICK
- 54. FIRE WALL, BRICK
- 55. FIRE WALL, BRICK
- 56. FIRE WALL, BRICK
- 57. FIRE WALL, BRICK
- 58. FIRE WALL, BRICK
- 59. FIRE WALL, BRICK
- 60. FIRE WALL, BRICK
- 61. FIRE WALL, BRICK
- 62. FIRE WALL, BRICK
- 63. FIRE WALL, BRICK
- 64. FIRE WALL, BRICK
- 65. FIRE WALL, BRICK
- 66. FIRE WALL, BRICK
- 67. FIRE WALL, BRICK
- 68. FIRE WALL, BRICK
- 69. FIRE WALL, BRICK
- 70. FIRE WALL, BRICK
- 71. FIRE WALL, BRICK
- 72. FIRE WALL, BRICK
- 73. FIRE WALL, BRICK
- 74. FIRE WALL, BRICK
- 75. FIRE WALL, BRICK
- 76. FIRE WALL, BRICK
- 77. FIRE WALL, BRICK
- 78. FIRE WALL, BRICK
- 79. FIRE WALL, BRICK
- 80. FIRE WALL, BRICK
- 81. FIRE WALL, BRICK
- 82. FIRE WALL, BRICK
- 83. FIRE WALL, BRICK
- 84. FIRE WALL, BRICK
- 85. FIRE WALL, BRICK
- 86. FIRE WALL, BRICK
- 87. FIRE WALL, BRICK
- 88. FIRE WALL, BRICK
- 89. FIRE WALL, BRICK
- 90. FIRE WALL, BRICK
- 91. FIRE WALL, BRICK
- 92. FIRE WALL, BRICK
- 93. FIRE WALL, BRICK
- 94. FIRE WALL, BRICK
- 95. FIRE WALL, BRICK
- 96. FIRE WALL, BRICK
- 97. FIRE WALL, BRICK
- 98. FIRE WALL, BRICK
- 99. FIRE WALL, BRICK
- 100. FIRE WALL, BRICK



BRUEN

3



13A

13B

MARTIN ST.

WARFIELD

DUDLEY

RAILROAD

BRUEN

B. S. J. GREENBAUM CO. INC.
BELLE OF ANDERSON GLENHIRE DISTY.
FORMERLY S. J. GREENBAUM
Registered Distillery No. 49-728 District, Woodford Co.,
PRODUCT: SHIRAZ, GRAY MOUNT, SOUV. MASH WHISKEY
MASH CAPACITY: 2000 BUSHELS ANNUAL YIELD

Bonded Ware No. 'F'
CAPACITY: 2000 BARRELS
PATENT RACKS - 17 TIERS
HEAT: STEAM (OR C.I.)

Bonded Ware No. 'G'
CAPACITY: 2000 BARRELS
PATENT RACKS - 17 TIERS
HEAT: STEAM (OR C.I.)

B. S. J. GREENBAUM CO. INC.
Bonded Ware No. 'H'
CAPACITY: 30000 BARRELS
PATENT RACKS - 17 TIERS
HEAT: STEAM - NO LIGHTS (FOR LEAD)
ELECTRIC POWER BARREL LIFT

COGAR RUMLEY CO. GRAIN ELEVATOR

**Freight No. 1
L. & N. R. STATION**

DISTILLERY NOT IN OPERATION DURING PAST 18 MONTHS
DUN - 14 MONTHS OF YEAR
NIGHT WATCHMAN CLOCK OUT OF REPAIR NOT USED POWER
STEAM - HEAT: STEAM IN ALL WARE HOUSES - HEAT ROOM, STEAM
DRUMMER - FUEL COILS - LIGHTS - ELECTRIC - (EXCEPT IN
BUTTLING HO) NONE IN WARE HOUSES IN GAL. CHARGES
ELECTRIC AND WATER PUMPS NOT IN COMMISSION OR USED
FOR SERVICE ONLY WASH USED

NO WATCHMAN POWER ELECTRIC HEAT
STEAM WAREHOUSE - LIGHTS - ELECTRIC -
6 PS OIL CHEMICAL EXTRACTS

MACHINERY
1 FLOOR - 1 CONDENSER - 1 SHIMMER BALL
2 FLOOR - 1 MILL - 1 MILL - 1 MILL - 1 MILL
1 CORN SEPARATOR

WARE HO.

WARE HO.

WARE HO.

WARE HO.

Scale of Feet.

WINTER

30

2

2

3

30

1

2

JUNE 1915
MIDWAY
KY.

SCALE 100 FT. TO AN INCH

