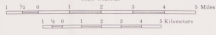


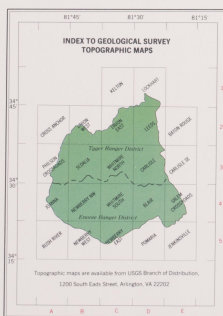
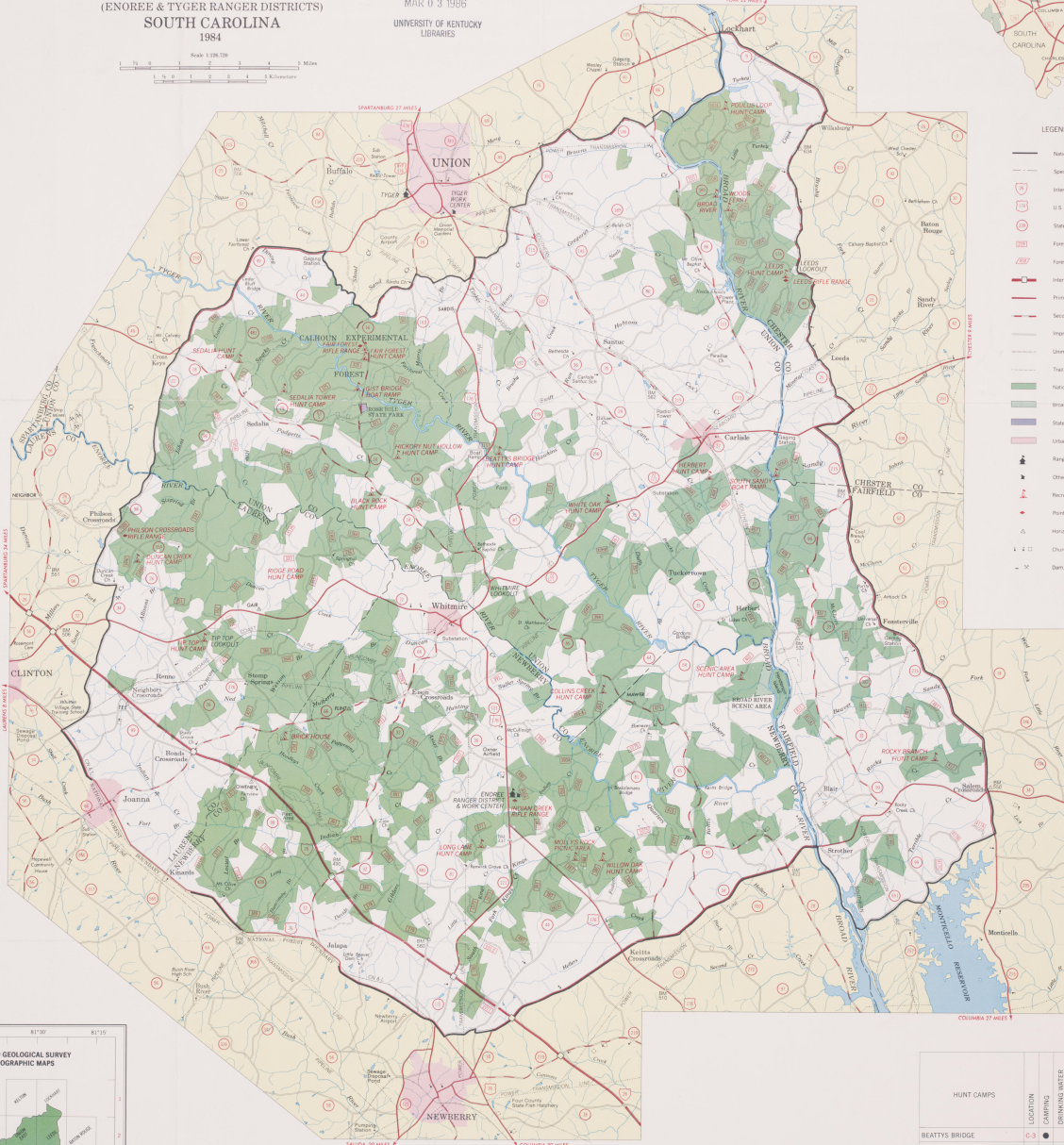
U.S. DEPARTMENT OF AGRICULTURE
 FOREST SERVICE
 R. MAX PETERSON, CHIEF
SUMTER NATIONAL FOREST
 (ENOREE & TYGER RANGER DISTRICTS)
 SOUTH CAROLINA
 1984

DEPOSITORY
 GOVERNMENT PUBLICATIONS DEPT.
 MAR 0 3 1986
 UNIVERSITY OF KENTUCKY
 LIBRARIES



LEGEND

- National Forest Boundary
- - - Special Area Boundary
- ⦿ Interstate Highway
- ⦿ U.S. Highway
- ⦿ State Highway
- ⦿ Forest Route
- ⦿ Forest Trail
- ⦿ Interchange
- ⦿ Primary Highway
- ⦿ Secondary Highway
- ⦿ Improved Road
- ⦿ Unimproved Road
- ⦿ Trail
- National Forest Land
- Road River Scenic Area
- State Land
- Urban Area
- ⦿ Ranger District Office
- ⦿ Other Forest Service Facility
- ⦿ Recreation Site
- ⦿ Point of Interest
- ⦿ Historical Control Station
- ⦿ Church School Cemetery
- ⦿ Dam Quarry



RIFLE RANGES	LOCATION
FAIR FOREST	B-2
INDIAN CREEK	C-4
LEEDS	D-2
PHILSON CROSS ROADS	A-3

RECREATION SITES	LOCATION	BATING	CAMPING	DRINKING WATER	FISHING	HIKING TRAILS	PICKNICKING	SANITARY FACILITIES	TRAILER SPACE
BRICK HOUSE CAMPGROUND	B-4		●	●	●	●	●	●	●
BROAD RIVER RECREATION AREA	D-2	L							
BROAD RIVER SCENIC AREA	D-4								
MOLLY'S RIDGE SCENIC AREA	C-4								
WOODS FERRY RECREATION AREA	D-2	L							

F=Fee Area L=Launch Ramp A=Camp Down Access E=Electric Motors Only

HUNT CAMPS	LOCATION	CAMPING	DRINKING WATER	SANITARY FACILITIES	TRAILER SPACE
BEATTYS BRIDGE	B-3	●	●	●	●
BLACK ROCK	B-3	●	●	●	●
COLLINS CREEK	C-4	●	●	●	●
DUNCAN CREEK	A-3	●	●	●	●
FAIR FOREST	B-2	●	●	●	●
HERBERT	D-3	●	●	●	●
HICKORY NUT HOLLOW	D-2	●	●	●	●
LEEDS	B-3	●	●	●	●
LONG LANE	C-4	●	●	●	●
POULOS LOOP	D-1	●	●	●	●
RIDGE ROAD	B-3	●	●	●	●
ROCKY BRANCH	E-4	●	●	●	●
SCENIC AREA	D-4	●	●	●	●
SEDALIA	B-2	●	●	●	●
SEDALIA TOWER	B-3	●	●	●	●
TIP TOP	A-4	●	●	●	●
WHITE OAK	C-3	●	●	●	●
WILLOW OAK	C-4	●	●	●	●

FOREST SERVICE MAP
 Compiled and drawn at Regional Office, Raleigh, North Carolina, 1984 from Forest Service planimetric maps constructed by geodetic methods. Contours 100 and 200 Survey, USGS Survey and Forest Service Survey. Revised in 1983 by the USGS Geomorphology Center from 1983 field work by the Southern Region.

Projection: projection
 1927 North American datum