

N. MAPLE

Lumber Shed Lumber

H. M. CLAY & CO.  
PLANING MILL  
DOOR & BLIND  
FACTORY

DRY & NIGHT WATCHMAN.  
PULP CHAIN & LUMBER SHEDS.  
MILL WINDMILL, HEAVY STEAM,  
WATER TANK & PIPES.  
FORCE PUMP & SMALL HOSE.

JONES & GAY  
GRAIN W. HO.

HEMP HACKLING HO.

W. W. BUSH  
GRAIN W. HO.

MESSON  
DONNELLY  
Machine Shop &  
Boundary

FOUNDRY

W. W. BUSH  
TOB. W. HO.

PASSENGER DEPOT

FREIGHT HO.

S. A. CONN  
WINCHESTER PLANING MILL

Planing Mill  
Sash, Door & Blind  
FAC. 2nd Fl.

KEY

BE FINISH	FIRE WALL OR ROOF
DRY	DRY
FRAME PARTITION	FRAME PARTITION
OPENING & SHED	OPENING & SHED
WINDOWS - SHUTTERS	WINDOWS - SHUTTERS
STABLE	STABLE
WINDOW IN 1ST STORY	WINDOW IN 1ST STORY
2nd ST.	2nd ST.
3rd ST.	3rd ST.
4th ST.	4th ST.
5th ST.	5th ST.
6th ST.	6th ST.
7th ST.	7th ST.
8th ST.	8th ST.
9th ST.	9th ST.
10th ST.	10th ST.
11th ST.	11th ST.
12th ST.	12th ST.
13th ST.	13th ST.
14th ST.	14th ST.
15th ST.	15th ST.
16th ST.	16th ST.
17th ST.	17th ST.
18th ST.	18th ST.
19th ST.	19th ST.
20th ST.	20th ST.
21st ST.	21st ST.
22nd ST.	22nd ST.
23rd ST.	23rd ST.
24th ST.	24th ST.
25th ST.	25th ST.
26th ST.	26th ST.
27th ST.	27th ST.
28th ST.	28th ST.
29th ST.	29th ST.
30th ST.	30th ST.
31st ST.	31st ST.
32nd ST.	32nd ST.
33rd ST.	33rd ST.
34th ST.	34th ST.
35th ST.	35th ST.
36th ST.	36th ST.
37th ST.	37th ST.
38th ST.	38th ST.
39th ST.	39th ST.
40th ST.	40th ST.
41st ST.	41st ST.
42nd ST.	42nd ST.
43rd ST.	43rd ST.
44th ST.	44th ST.
45th ST.	45th ST.
46th ST.	46th ST.
47th ST.	47th ST.
48th ST.	48th ST.
49th ST.	49th ST.
50th ST.	50th ST.
51st ST.	51st ST.
52nd ST.	52nd ST.
53rd ST.	53rd ST.
54th ST.	54th ST.
55th ST.	55th ST.
56th ST.	56th ST.
57th ST.	57th ST.
58th ST.	58th ST.
59th ST.	59th ST.
60th ST.	60th ST.
61st ST.	61st ST.
62nd ST.	62nd ST.
63rd ST.	63rd ST.
64th ST.	64th ST.
65th ST.	65th ST.
66th ST.	66th ST.
67th ST.	67th ST.
68th ST.	68th ST.
69th ST.	69th ST.
70th ST.	70th ST.
71st ST.	71st ST.
72nd ST.	72nd ST.
73rd ST.	73rd ST.
74th ST.	74th ST.
75th ST.	75th ST.
76th ST.	76th ST.
77th ST.	77th ST.
78th ST.	78th ST.
79th ST.	79th ST.
80th ST.	80th ST.
81st ST.	81st ST.
82nd ST.	82nd ST.
83rd ST.	83rd ST.
84th ST.	84th ST.
85th ST.	85th ST.
86th ST.	86th ST.
87th ST.	87th ST.
88th ST.	88th ST.
89th ST.	89th ST.
90th ST.	90th ST.
91st ST.	91st ST.
92nd ST.	92nd ST.
93rd ST.	93rd ST.
94th ST.	94th ST.
95th ST.	95th ST.
96th ST.	96th ST.
97th ST.	97th ST.
98th ST.	98th ST.
99th ST.	99th ST.
100th ST.	100th ST.

Winchester Ky. Sept. 28<sup>th</sup> 1894

We the undersigned have examined the new Map of Winchester Ky. made by the Sanborn, Ferris Map Co. (incorp) of New York. We find the same complete & accurate and recommend it to the Companies we represent.

J. A. Bloom  
G. S. Joubert Sr  
G. W. Lilly  
H. D. Parish

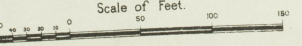


WATER WORKS CONTRACTED FOR & COMPLETED BUILDING 75,000 GALLONS PER DAY. 100,000 GALLONS PER DAY. 150,000 GALLONS PER DAY. 200,000 GALLONS PER DAY. 250,000 GALLONS PER DAY. 300,000 GALLONS PER DAY. 350,000 GALLONS PER DAY. 400,000 GALLONS PER DAY. 450,000 GALLONS PER DAY. 500,000 GALLONS PER DAY. 550,000 GALLONS PER DAY. 600,000 GALLONS PER DAY. 650,000 GALLONS PER DAY. 700,000 GALLONS PER DAY. 750,000 GALLONS PER DAY. 800,000 GALLONS PER DAY. 850,000 GALLONS PER DAY. 900,000 GALLONS PER DAY. 950,000 GALLONS PER DAY. 1,000,000 GALLONS PER DAY.

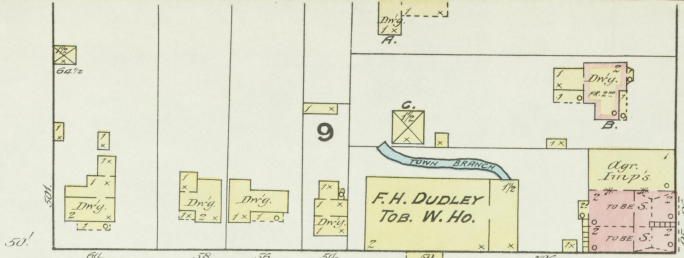
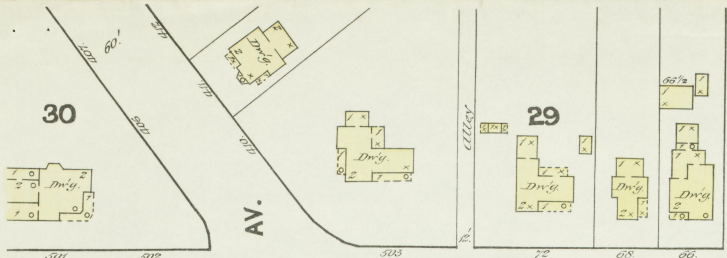
INDEX.

STREETS.	W	E	J
Washington	1-30	4	Jones & Gay, Grain Warehouse, 1
Boone Ave.	1-25	4	K. C. B. R. Depot, 1
Winn Ave.	1-48	1	Kerr, S. P., Roller Mills, 4
Court, N.	3		McDonnald, Quiseberry & Co. W. H. 4
Depot, North Side	1		Method. Episc. Church, 2
Fairfax, E.	1-25	2	Miller & Rutledge, Livery, 4
Hickman, E.	1-24	2	N. N. & M. V. R. B. Depot, 1
Highland, S.	1-24	2	Opera House, 2
Main, N.	1-66	1	Perry & Whittington, Coal Yard, 4
Maple, N.	1-65	4	Presbyterian Church, 2
W. W. Bush	1-34	4	Public School, 3
Winn	1-90	1	S. N. & M. V. R. B. Depot, 1
W. W. Bush	1-34	4	Skinner, I. C., Tobacco Warehouse, 1
W. W. Bush	1-34	4	Winnchester Electric Light Co., 4
W. W. Bush	1-34	4	Winnchester Hotel, 4
W. W. Bush	1-34	4	Winnchester Planing Mill, 1
W. W. Bush	1-34	4	Winnchester Roller Mills, 4

\* Indicates only one side of Street shown.

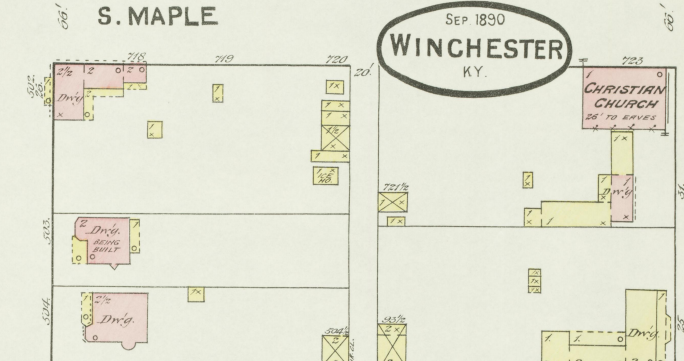
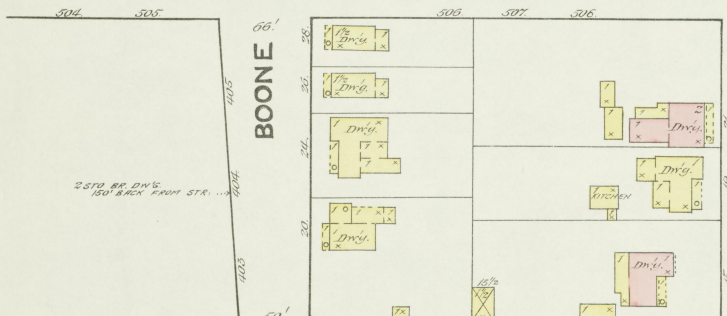


N. MAPLE  
SEE SHEET No. 4.



2

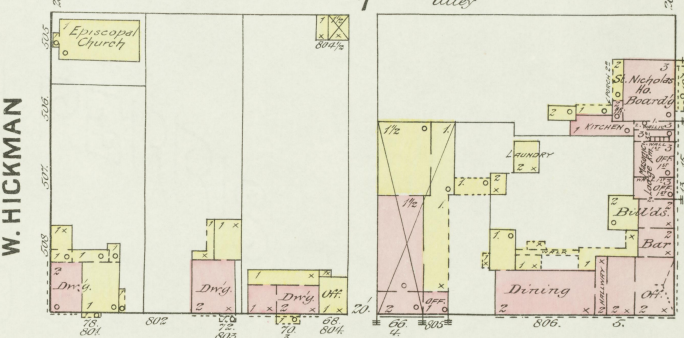
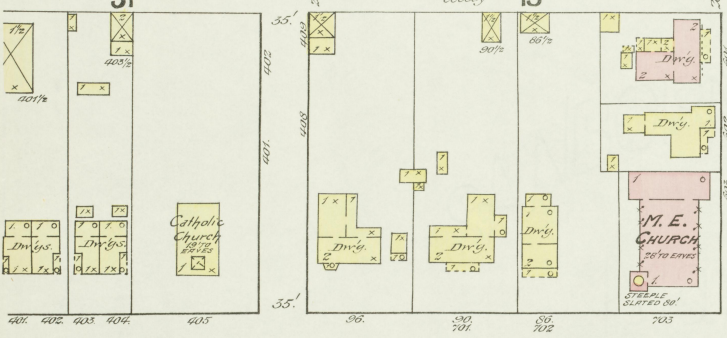
NO. 3.



SEP 1890  
**WINCHESTER**  
KY.

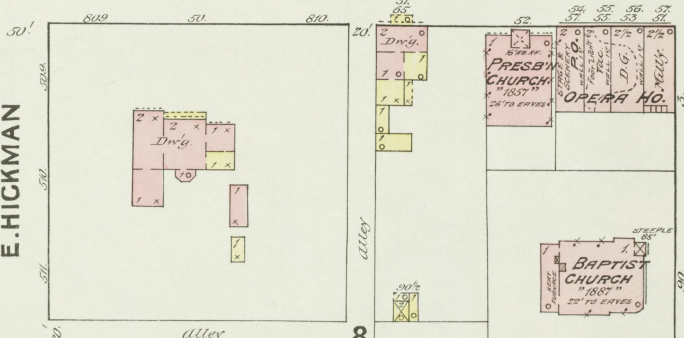
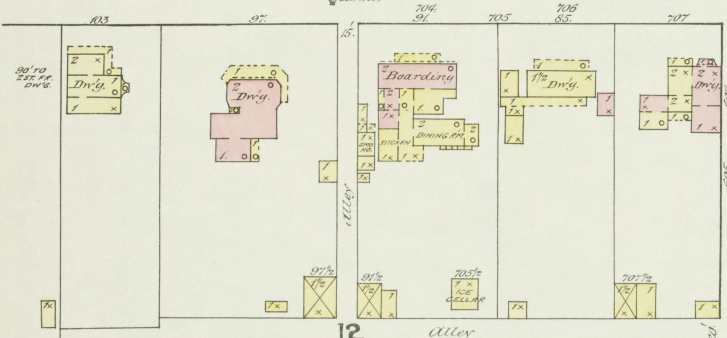
W. FAIRFAX

SHEET



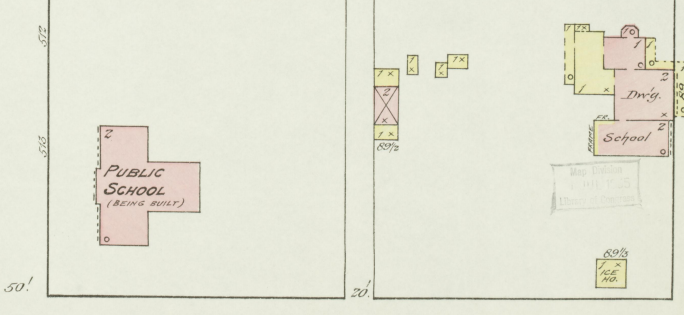
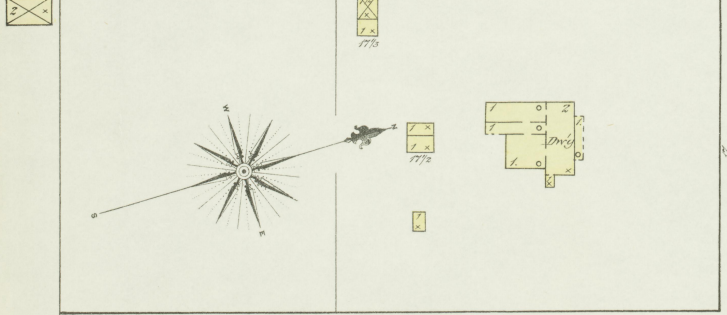
REES HO.

S. MAIN

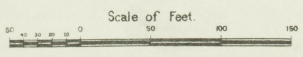
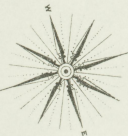


E. FAIRFAX

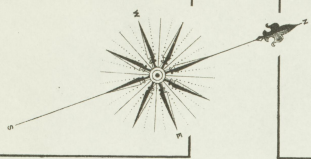
SEE



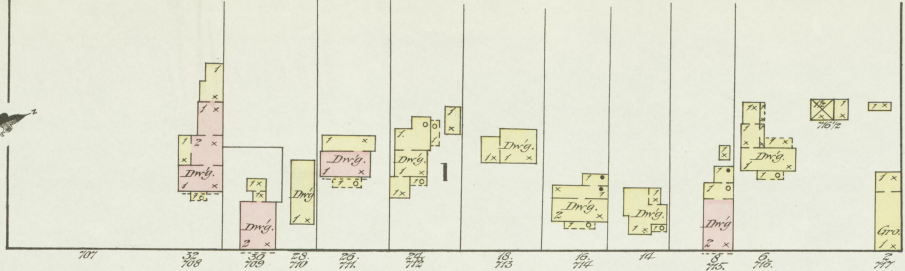
S. HIGHLAND



FOR D. 87. D.



SEE SHEET No. 1. **3**

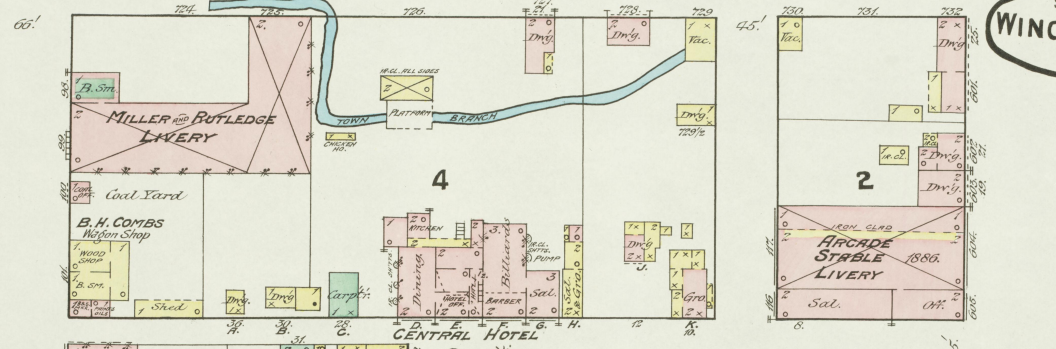


**S. MAPLE**

SEP. 1890  
**WINCHESTER**  
KY.

No. 2.

SHEET



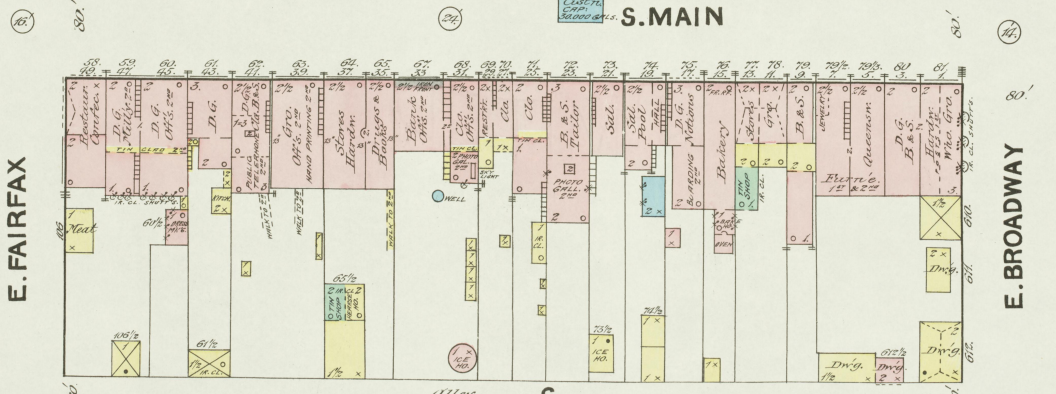
W. FAIRFAX

S. COURT

N. COURT

W. BROADWAY

SHEET



E. FAIRFAX

S. MAIN

E. BROADWAY

SEE SHEET



**S. HIGHLAND**

Scale of Feet. 0 50 100 150

SEE

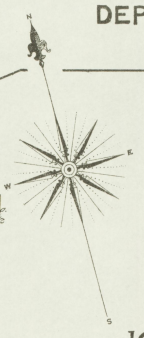
SHEET

No 1.

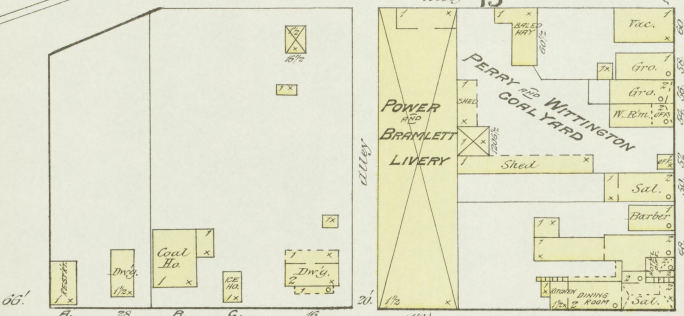
4

SEP. 1890  
WINCHESTER  
KY.

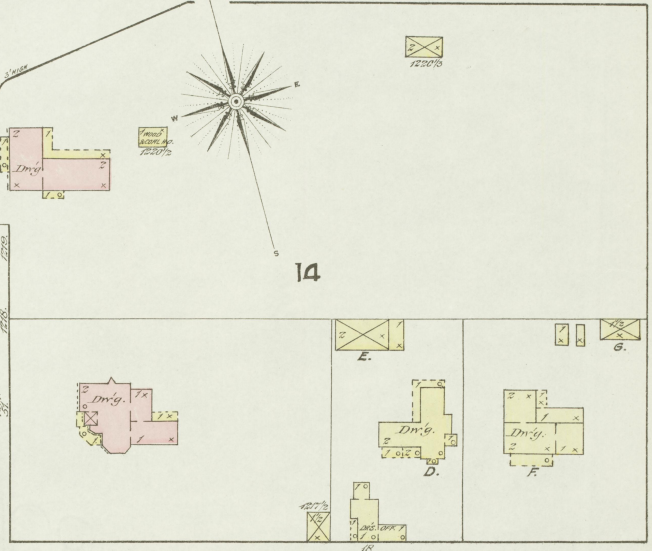
DEPOT



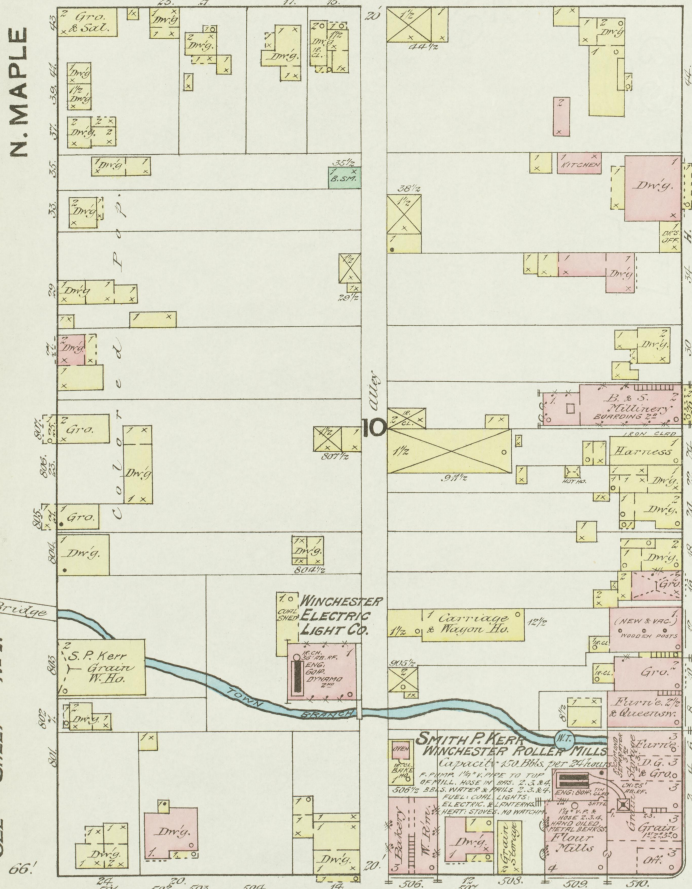
14



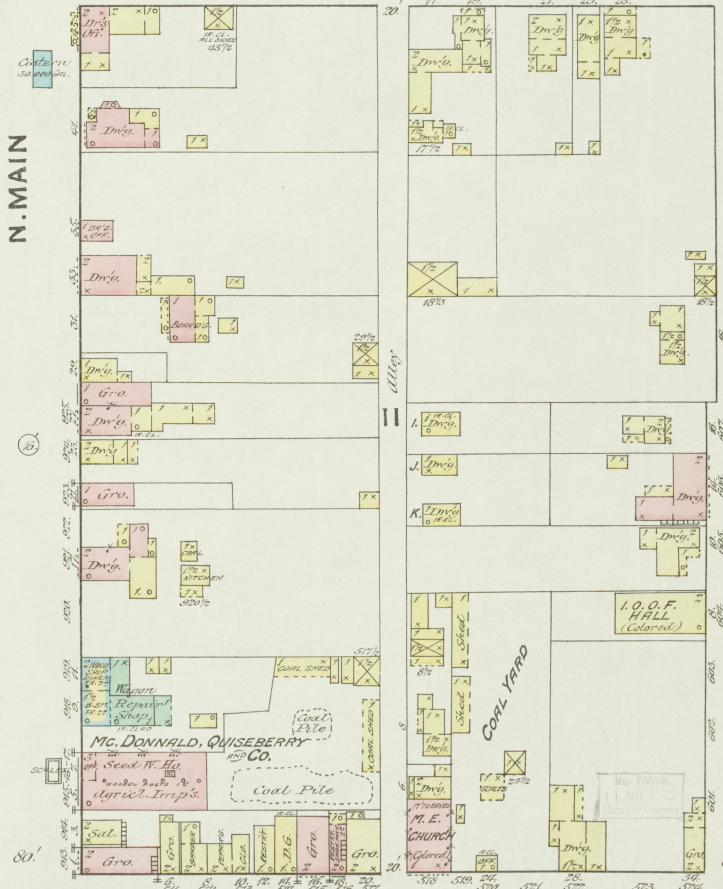
W. WASHINGTON



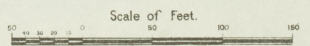
E. WASHINGTON



W. BROADWAY



E. BROADWAY



SEE

SHEET

No 3.

N. HIGHLAND

N. MAPLE

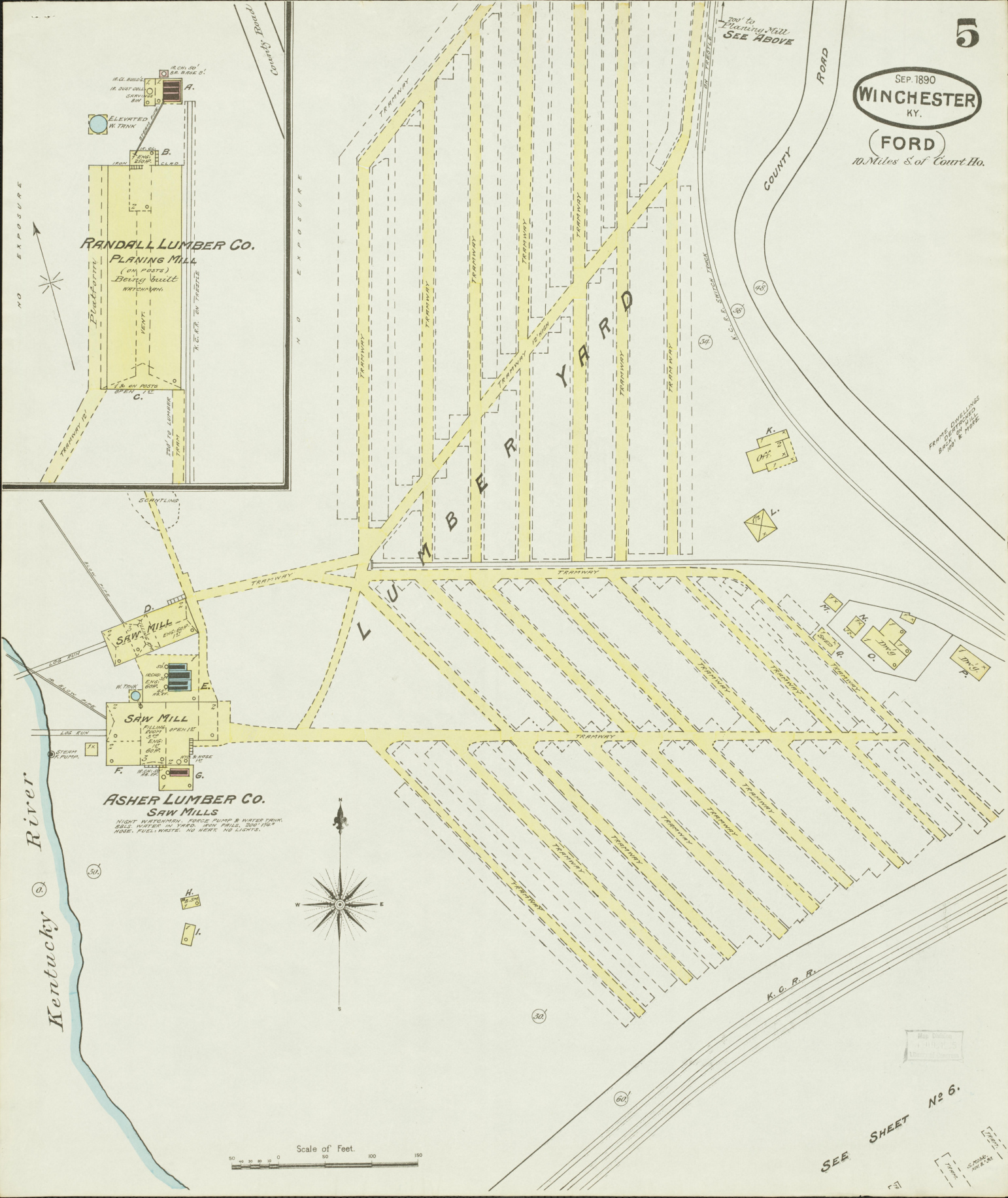
N. MAIN

SEE SHEET No 1.

- 1" = 20' (DOUBLE BALUS GULL)
- 2" = 40' (DOUBLE BALUS GULL)
- 3" = 60' (DOUBLE BALUS GULL)
- 4" = 80' (DOUBLE BALUS GULL)
- 5" = 100' (DOUBLE BALUS GULL)
- 6" = 120' (DOUBLE BALUS GULL)
- 7" = 140' (DOUBLE BALUS GULL)
- 8" = 160' (DOUBLE BALUS GULL)
- 9" = 180' (DOUBLE BALUS GULL)
- 10" = 200' (DOUBLE BALUS GULL)
- 11" = 220' (DOUBLE BALUS GULL)
- 12" = 240' (DOUBLE BALUS GULL)
- 13" = 260' (DOUBLE BALUS GULL)
- 14" = 280' (DOUBLE BALUS GULL)
- 15" = 300' (DOUBLE BALUS GULL)
- 16" = 320' (DOUBLE BALUS GULL)
- 17" = 340' (DOUBLE BALUS GULL)
- 18" = 360' (DOUBLE BALUS GULL)
- 19" = 380' (DOUBLE BALUS GULL)
- 20" = 400' (DOUBLE BALUS GULL)
- 21" = 420' (DOUBLE BALUS GULL)
- 22" = 440' (DOUBLE BALUS GULL)
- 23" = 460' (DOUBLE BALUS GULL)
- 24" = 480' (DOUBLE BALUS GULL)
- 25" = 500' (DOUBLE BALUS GULL)
- 26" = 520' (DOUBLE BALUS GULL)
- 27" = 540' (DOUBLE BALUS GULL)
- 28" = 560' (DOUBLE BALUS GULL)
- 29" = 580' (DOUBLE BALUS GULL)
- 30" = 600' (DOUBLE BALUS GULL)
- 31" = 620' (DOUBLE BALUS GULL)
- 32" = 640' (DOUBLE BALUS GULL)
- 33" = 660' (DOUBLE BALUS GULL)
- 34" = 680' (DOUBLE BALUS GULL)
- 35" = 700' (DOUBLE BALUS GULL)
- 36" = 720' (DOUBLE BALUS GULL)
- 37" = 740' (DOUBLE BALUS GULL)
- 38" = 760' (DOUBLE BALUS GULL)
- 39" = 780' (DOUBLE BALUS GULL)
- 40" = 800' (DOUBLE BALUS GULL)
- 41" = 820' (DOUBLE BALUS GULL)
- 42" = 840' (DOUBLE BALUS GULL)
- 43" = 860' (DOUBLE BALUS GULL)
- 44" = 880' (DOUBLE BALUS GULL)
- 45" = 900' (DOUBLE BALUS GULL)
- 46" = 920' (DOUBLE BALUS GULL)
- 47" = 940' (DOUBLE BALUS GULL)
- 48" = 960' (DOUBLE BALUS GULL)
- 49" = 980' (DOUBLE BALUS GULL)
- 50" = 1000' (DOUBLE BALUS GULL)

SEP. 1890  
**WINCHESTER**  
KY.

**FORD**  
10 Miles S. of Court Ho.



NO EXPOSURE

NO EXPOSURE

Kentucky River

100' to Planing Mill  
SEE ABOVE

COUNTY ROAD

COUNTY

LUMBER YARD

**RANDALL LUMBER CO.**

**PLANING MILL**

(ON POSTS)  
Being built  
BY CONTRACT

Electron  
WATER TRUCK

TRAMWAY

TRAMWAY

TRAMWAY

TRAMWAY

TRAMWAY

TRAMWAY

TRAMWAY

TRAMWAY

TRAMWAY

TRAMWAY

TRAMWAY

TRAMWAY

TRAMWAY

TRAMWAY

TRAMWAY

TRAMWAY

TRAMWAY

TRAMWAY

TRAMWAY

TRAMWAY

TRAMWAY

TRAMWAY

TRAMWAY

TRAMWAY

TRAMWAY

TRAMWAY

TRAMWAY

TRAMWAY

TRAMWAY

TRAMWAY

TRAMWAY

TRAMWAY

TRAMWAY

TRAMWAY

TRAMWAY

TRAMWAY

TRAMWAY

TRAMWAY

TRAMWAY

TRAMWAY

TRAMWAY

TRAMWAY

TRAMWAY

TRAMWAY

TRAMWAY

TRAMWAY

TRAMWAY

TRAMWAY

TRAMWAY

TRAMWAY

TRAMWAY

TRAMWAY

TRAMWAY

TRAMWAY

TRAMWAY

TRAMWAY

TRAMWAY

TRAMWAY

TRAMWAY

TRAMWAY

TRAMWAY

TRAMWAY

TRAMWAY

TRAMWAY

TRAMWAY

TRAMWAY

TRAMWAY

TRAMWAY

TRAMWAY

TRAMWAY

TRAMWAY

TRAMWAY

TRAMWAY

TRAMWAY

TRAMWAY

TRAMWAY

TRAMWAY

TRAMWAY

TRAMWAY

TRAMWAY

TRAMWAY

TRAMWAY

TRAMWAY

TRAMWAY

TRAMWAY

TRAMWAY

TRAMWAY

TRAMWAY

TRAMWAY

TRAMWAY

TRAMWAY

TRAMWAY

TRAMWAY

TRAMWAY

TRAMWAY

TRAMWAY

TRAMWAY

TRAMWAY

TRAMWAY

TRAMWAY

TRAMWAY

TRAMWAY

TRAMWAY

TRAMWAY

TRAMWAY

TRAMWAY

TRAMWAY

TRAMWAY

TRAMWAY

TRAMWAY

TRAMWAY

TRAMWAY

TRAMWAY

TRAMWAY

TRAMWAY

TRAMWAY

TRAMWAY

TRAMWAY

TRAMWAY

TRAMWAY

TRAMWAY

TRAMWAY

TRAMWAY

TRAMWAY

TRAMWAY

TRAMWAY

TRAMWAY

TRAMWAY

TRAMWAY

TRAMWAY

TRAMWAY

TRAMWAY

TRAMWAY

TRAMWAY

TRAMWAY

TRAMWAY

TRAMWAY

TRAMWAY

TRAMWAY

TRAMWAY

TRAMWAY

TRAMWAY

TRAMWAY

TRAMWAY

TRAMWAY

TRAMWAY

TRAMWAY

TRAMWAY

TRAMWAY

TRAMWAY

TRAMWAY

TRAMWAY

TRAMWAY

TRAMWAY

TRAMWAY

TRAMWAY

TRAMWAY

TRAMWAY

TRAMWAY

TRAMWAY

TRAMWAY

TRAMWAY

TRAMWAY

TRAMWAY

TRAMWAY

TRAMWAY

TRAMWAY

TRAMWAY

TRAMWAY

TRAMWAY

TRAMWAY

TRAMWAY

TRAMWAY

TRAMWAY

TRAMWAY

TRAMWAY

TRAMWAY

TRAMWAY

TRAMWAY

TRAMWAY

TRAMWAY

TRAMWAY

TRAMWAY

TRAMWAY

TRAMWAY

TRAMWAY

TRAMWAY

TRAMWAY

TRAMWAY

TRAMWAY

TRAMWAY

TRAMWAY

TRAMWAY

TRAMWAY

TRAMWAY

TRAMWAY

TRAMWAY

TRAMWAY

TRAMWAY

TRAMWAY

TRAMWAY

TRAMWAY

TRAMWAY

TRAMWAY

TRAMWAY

TRAMWAY

TRAMWAY

TRAMWAY

TRAMWAY

TRAMWAY

TRAMWAY

TRAMWAY

TRAMWAY

TRAMWAY

TRAMWAY

TRAMWAY

TRAMWAY

TRAMWAY

TRAMWAY

TRAMWAY

TRAMWAY

TRAMWAY

TRAMWAY

TRAMWAY

TRAMWAY

TRAMWAY

TRAMWAY

TRAMWAY

TRAMWAY

TRAMWAY

TRAMWAY

TRAMWAY

TRAMWAY

TRAMWAY

TRAMWAY

TRAMWAY

TRAMWAY

TRAMWAY

TRAMWAY

TRAMWAY

TRAMWAY

TRAMWAY

TRAMWAY

TRAMWAY

TRAMWAY

TRAMWAY

TRAMWAY

TRAMWAY

TRAMWAY

TRAMWAY

TRAMWAY

TRAMWAY

TRAMWAY

TRAMWAY

TRAMWAY

TRAMWAY

TRAMWAY

TRAMWAY

TRAMWAY

TRAMWAY

TRAMWAY

TRAMWAY

TRAMWAY

TRAMWAY

TRAMWAY

TRAMWAY

TRAMWAY

TRAMWAY

TRAMWAY

TRAMWAY

TRAMWAY

TRAMWAY

TRAMWAY

TRAMWAY

TRAMWAY

TRAMWAY

TRAMWAY

TRAMWAY

TRAMWAY

TRAMWAY

TRAMWAY

TRAMWAY

TRAMWAY

TRAMWAY

TRAMWAY

TRAMWAY

TRAMWAY

TRAMWAY

TRAMWAY

TRAMWAY

TRAMWAY

TRAMWAY

TRAMWAY

TRAMWAY

TRAMWAY

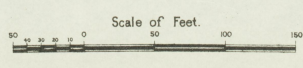
TRAMWAY

TRAMWAY

TRAMWAY

TRAMWAY

&lt;



S. W. B. & C.  
1890